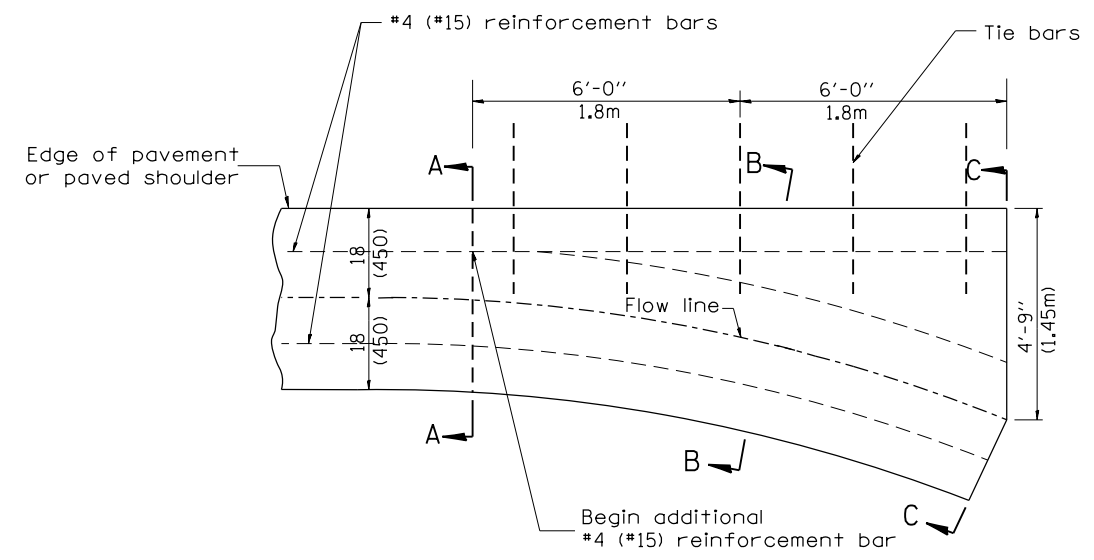
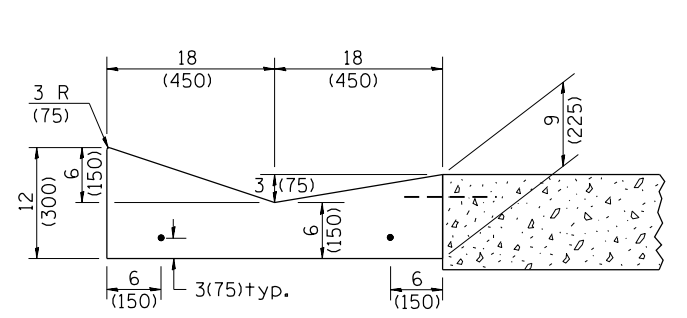


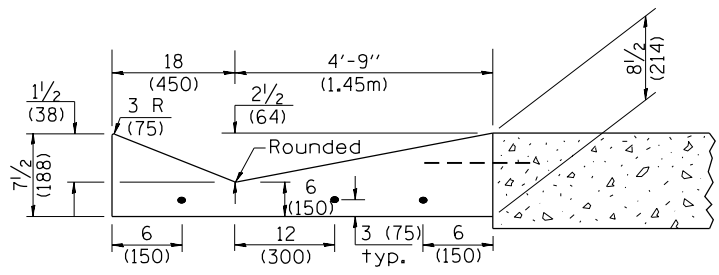
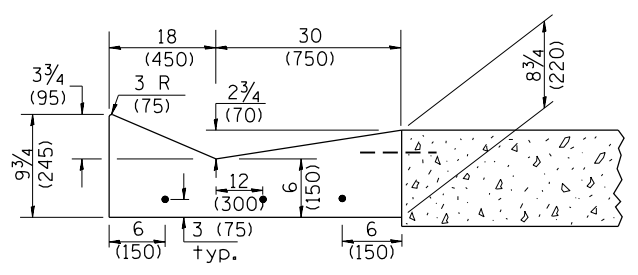
**TYPE A GUTTER (MODIFIED)**



**QUANTITY**  
Section C-C to A-A= 1.2 cu. yd.  
(0.92 m<sup>3</sup>) concrete.

**GENERAL NOTES:**

1. TYPE A GUTTER (MODIFIED) shall conform to the applicable portions of Section 606.
2. Tie bars shall be No. 6 (No. 20) at 24" (600mm) centers unless otherwise shown.
3. Gutter, gutter inlets, gutter outlets, and gutter entrances shall be tied to rigid pavement in accordance with details shown on Standard 420001.
4. Joints shall be constructed in accordance with Article 606.06.
5. Welded wire fabric shall conform to Article 1006.10(c)(1), and shall not be less than 58 lbs/100 sq.ft. (2.83 kg/m<sup>2</sup>).



**INLET**

DESIGNER NOTES:  
1. INCLUDE STATE STANDARD 420001.  
2. INCLUDE DISTRICT SPECIAL PROVISION.

QUANTITIES	
CALC. BY:	DATE:
CHECKED BY:	DATE:
QUANTITY CALCULATIONS ARE ON FILE AT THE DISTRICT 4 OFFICE; BUREAU OF PROJECT IMPLEMENTATION; DOCUMENTATION SECTION	

NO.	DESCRIPTION	DATE	BY
01-01-97	RENUM. A-1.02, NEW REVISION BOX, ELIMINATED		T.P.
	EXPANSION ANCHOR TIES		
02-28-02	ENTRANCE TYPICALS REVISED		M.A.
10-16-06	REVISED TO 2007 SPEC.		M.A.
01-10-07	REVISED QUANTITY		M.A.
11-16-07	REVISED QUANTITY		M.A.

**STATE OF ILLINOIS  
DEPARTMENT OF TRANSPORTATION**

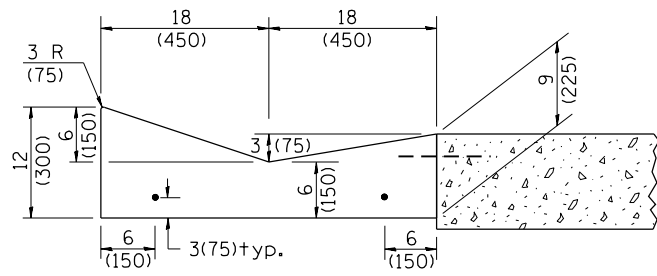
NOT TO SCALE

**TYPE A GUTTER, (MODIFIED)  
(INLET, OUTLET & ENTRANCE)**

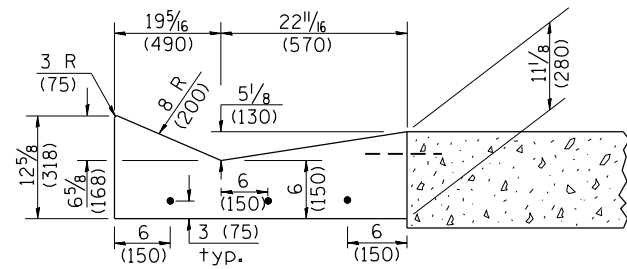
SHT. 1 OF 3  
CADD STD. 606101-D4

All dimensions are in inches (millimeters) unless otherwise noted.

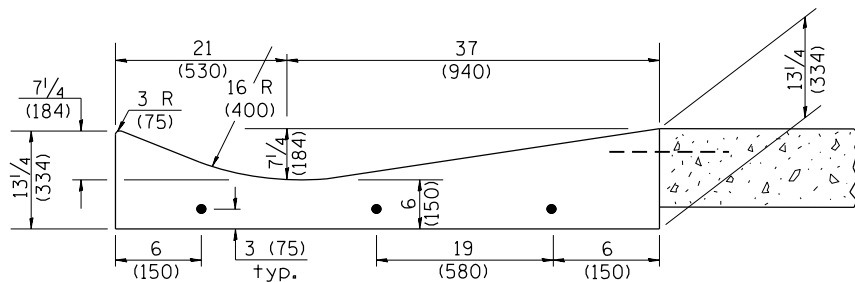
F.A. RTE.	SECTION	COUNTY	TOTAL SHEETS	SHEET NO.
				CONTRACT NO.
FED. ROAD DIST. NO. ILLINOIS FED. AID PROJECT				



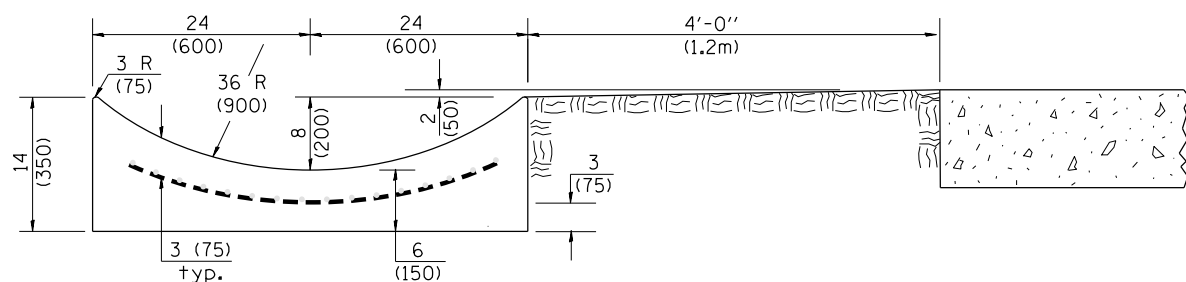
SECTION A-A



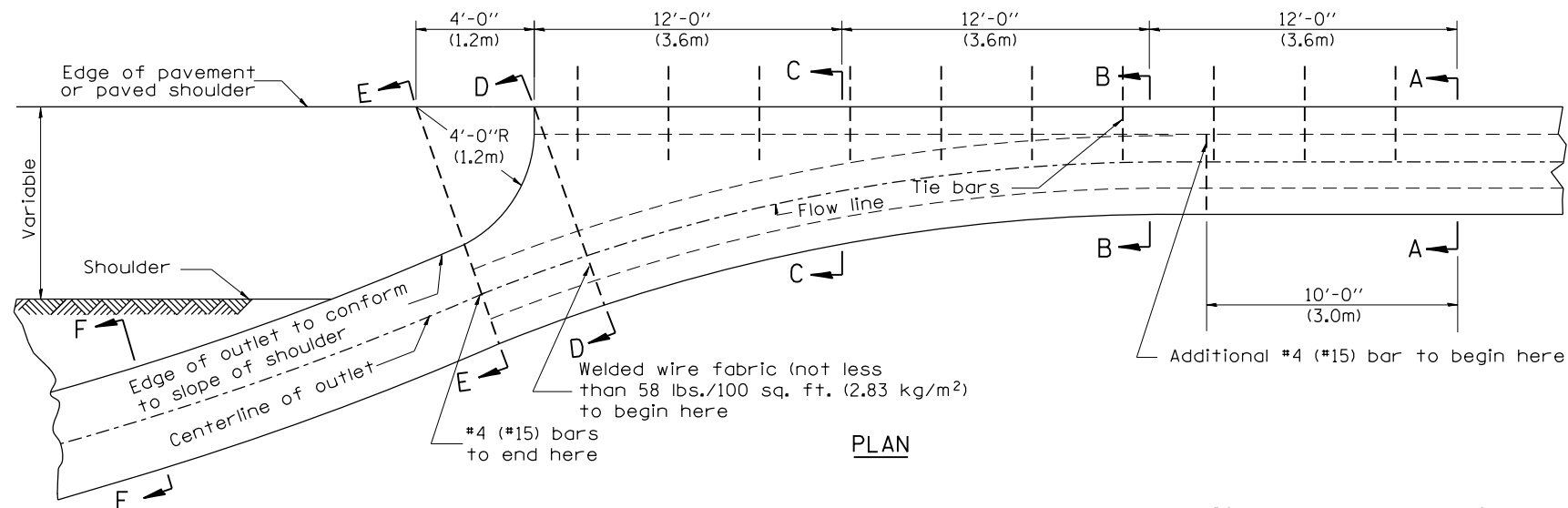
SECTION B-B



SECTION C-C



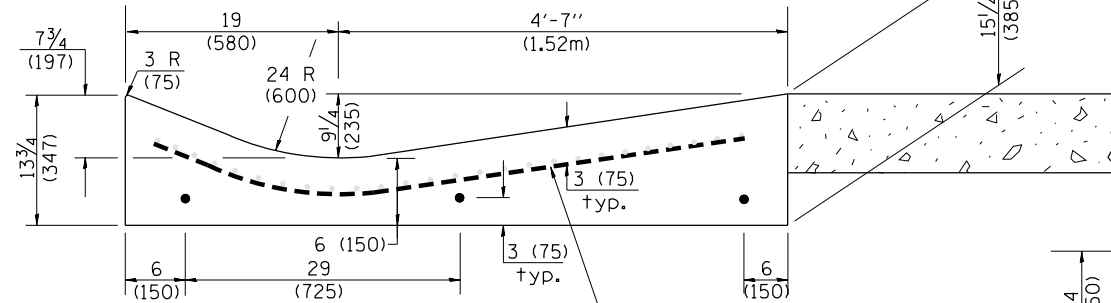
SECTION E-E



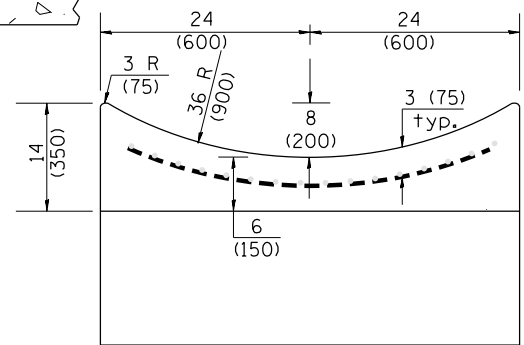
PLAN

**QUANTITY**  
 Section A-A to E-E = 4.5 cu. yd. (3.36 m<sup>3</sup>) concrete.  
 Section E-E to F-F = 0.10 cu. yd./ft. (0.26 m<sup>3</sup>/m) concrete.

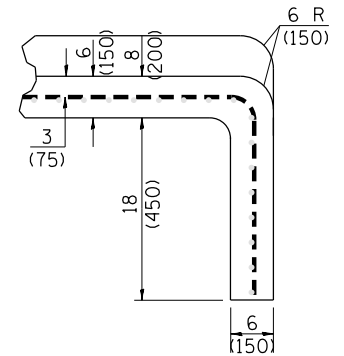
If the average grade of pavement for the distance from section A-A to section D-D exceeds 2%, this distance shall be increased 6 ft. (1.8 m) for each 1% increase in grade. A quantity adjustment is required.



SECTION D-D



SECTION F-F



SECTIONS AT END OF OUTLET (CURTAIN WALL)

**QUANTITY**  
 Curtain Wall = 0.1 cu. yd. (0.08 m<sup>3</sup>) concrete.

**QUANTITIES**  
 CALC. BY: \_\_\_\_\_ DATE: \_\_\_\_\_  
 CHECKED BY: \_\_\_\_\_ DATE: \_\_\_\_\_  
 QUANTITY CALCULATIONS ARE ON FILE AT THE DISTRICT 4 OFFICE; BUREAU OF PROJECT IMPLEMENTATION; DOCUMENTATION SECTION

OUTLET

STATE OF ILLINOIS  
 DEPARTMENT OF TRANSPORTATION

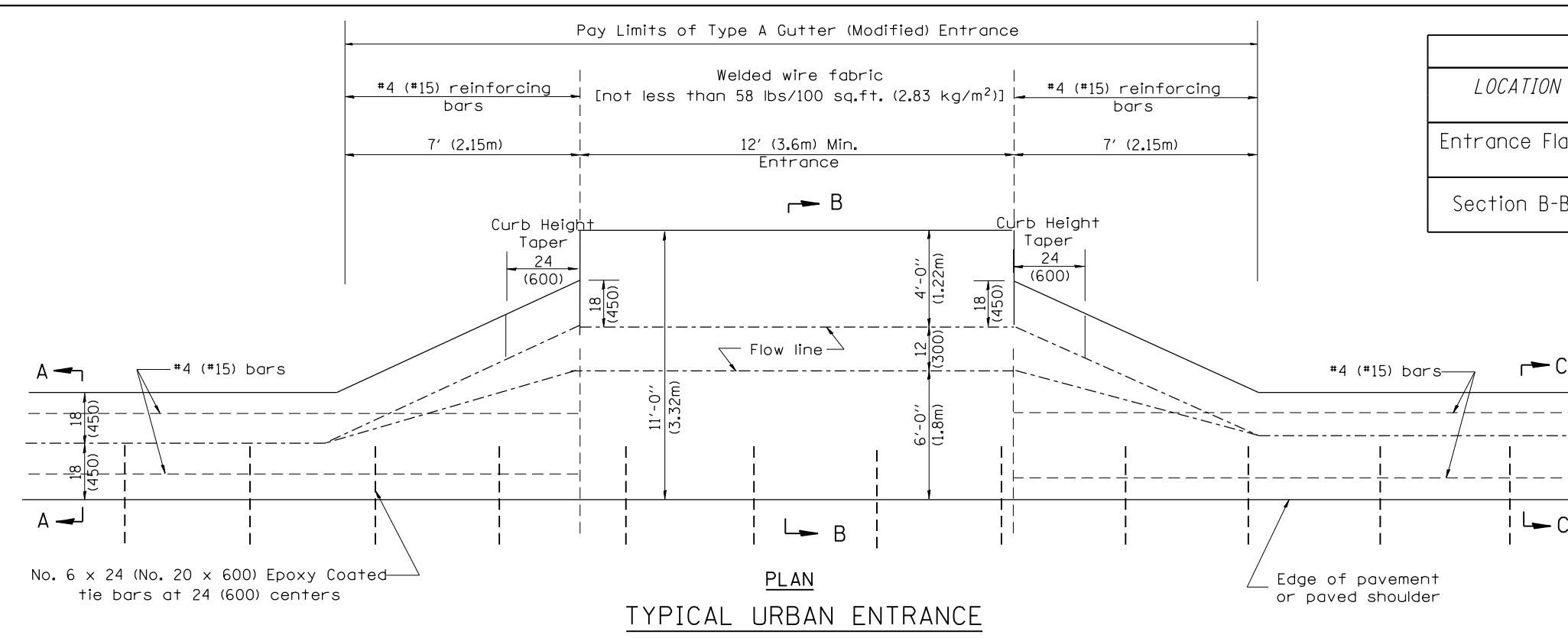
TYPE A GUTTER, (MODIFIED)  
 (INLET, OUTLET & ENTRANCE)

NOT TO SCALE

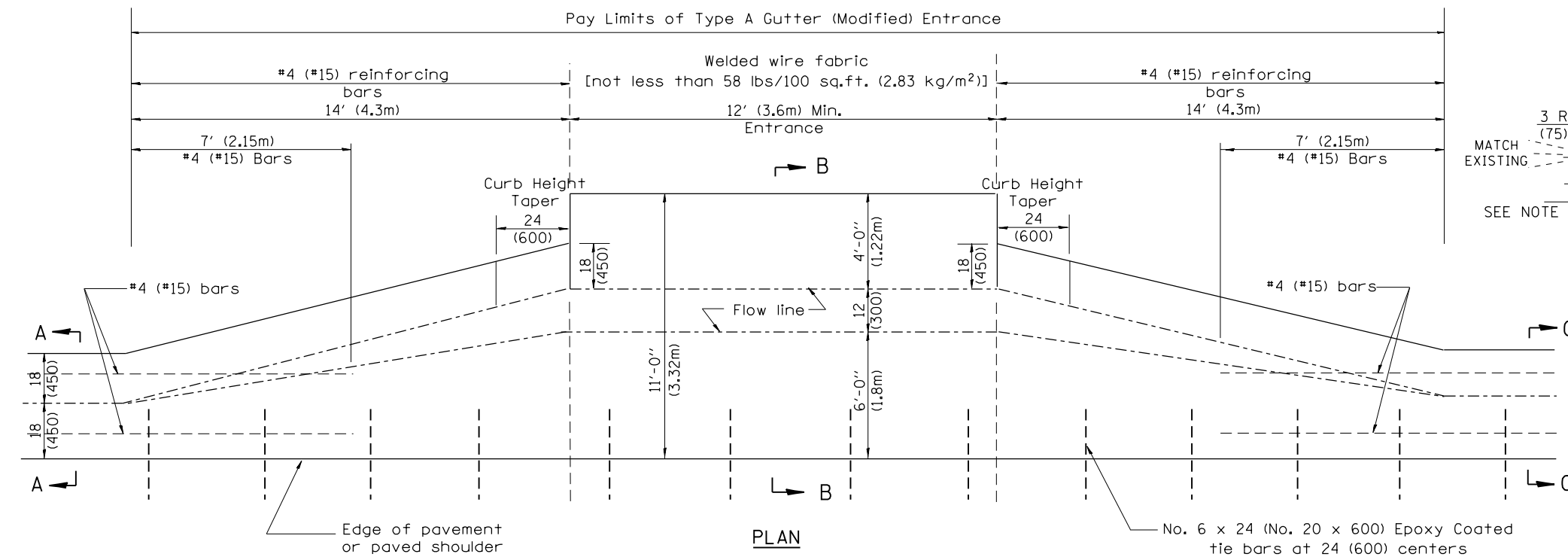
SHT. 2 OF 3  
 CADD STD. 606101-D4

All dimensions are in inches (millimeters) unless otherwise noted.

F.A. RTE.	SECTION	COUNTY	TOTAL SHEETS	SHEET NO.
CONTRACT NO.				
FED. ROAD DIST. NO. ILLINOIS FED. AID PROJECT				



No. 6 x 24 (No. 20 x 600) Epoxy Coated tie bars at 24 (600) centers



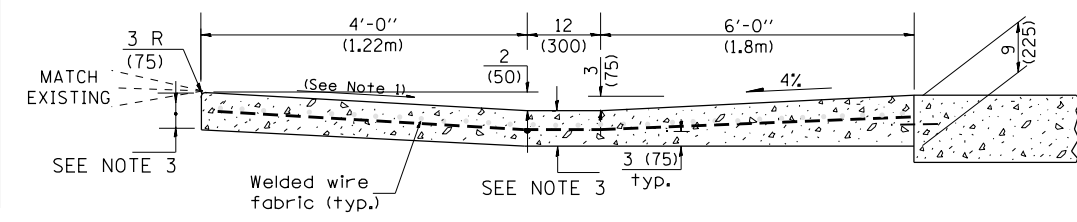
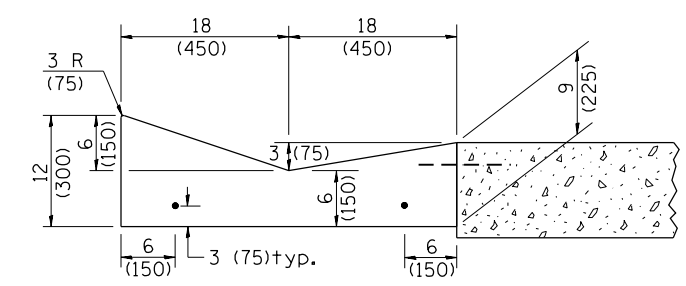
**QUANTITIES**

CALC. BY: \_\_\_\_\_ DATE: \_\_\_\_\_

CHECKED BY: \_\_\_\_\_ DATE: \_\_\_\_\_

QUANTITY CALCULATIONS ARE ON FILE AT THE DISTRICT 4 OFFICE; BUREAU OF PROJECT IMPLEMENTATION; DOCUMENTATION SECTION

QUANTITY CALCULATION			
LOCATION	LENGTH	NON-COMMERCIAL 6 (150)	COMMERCIAL ENTRANCE 8 (200)
Entrance Flare	7 Ft (2.15 m) Urban 14 Ft (4.30 m) Rural	0.15 Cu Yd / Ft (0.37 Cu M / M)	0.18 Cu Yd / Ft (0.45 Cu M / M)
Section B-B	See Plans	0.23 Cu Yd / Ft (0.57 Cu M / M)	0.28 Cu Yd / Ft (0.70 Cu M / M)



- GENERAL NOTES**
- Slope may be increased from 4% (min.) to 6% (max.) in order to match the existing.
  - The cross-slope is to be constructed as given in the plans from back turnout to where driveway matches existing.
  - For Non-Commercial Entrances the driveway thickness shall be 6 (150). For Commercial Entrances the driveway thickness shall be 8 (200).

All dimensions are in inches (millimeters) unless otherwise noted.