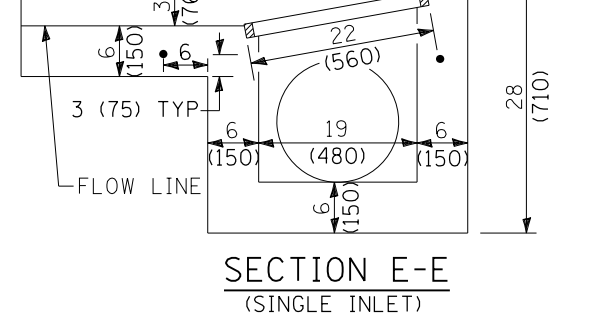
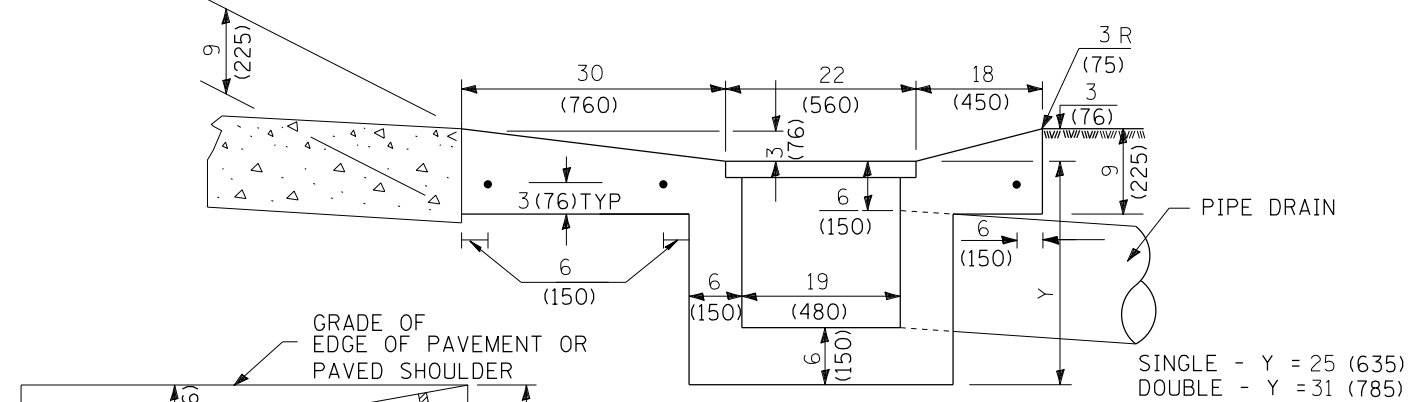
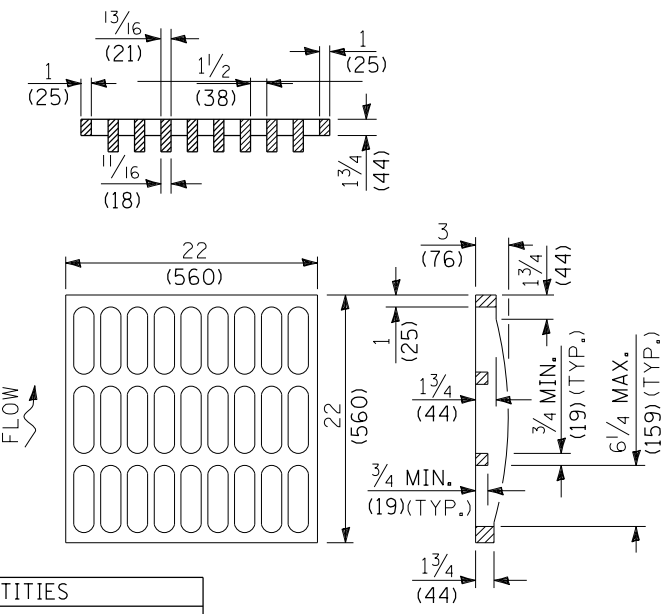


QUANTITIES

MATERIAL	SINGLE	DOUBLE
CONCRETE - (cu.yd.) m ³	()	()
CAST IRON GRATE - Ea. 125 lbs. (57 kg)	1	2
PIPE DRAIN - DIA. (in.) mm	15 (400)	18 (450)



GENERAL NOTES

The gutter outlet shall be tied to the pavement in accordance with details for longitudinal construction joint shown on Standard 420001.

Tie bars shall be No. 6 (No. 20) at 24" (600mm) centers unless otherwise shown.

If the average grade of pavement for the distance A-D exceeds 2%, this distance shall be increased 6' (1.8m) for each 1% increase in grade.

DESIGNER NOTES:
1. INCLUDE STATE STANDARD 420001.
2. PAY ITEM IS CLASS SI CONCRETE (OUTLET), SPECIAL.

QUANTITIES

CALC. BY: _____ DATE: _____
CHECKED BY: _____ DATE: _____

QUANTITY CALCULATIONS ARE ON FILE AT THE DISTRICT 4 OFFICE; BUREAU OF PROJECT IMPLEMENTATION; DOCUMENTATION SECTION

01-01-97	RENUM. A-1.07, NEW REVISION BOX, ADDED	T.P.
10-16-06	DESIGNER NOTES	
03-15-12	REVISED TO 2007 SPEC.	M.A.
	CHANGED MODIFIED TO SPECIAL	R.D.

STATE OF ILLINOIS
DEPARTMENT OF TRANSPORTATION

OUTLET TYPE 1 (SPECIAL) FOR
TYPE A GUTTER (SPECIAL)

NOT TO SCALE

CADD STD. 606106-D4

All dimensions are in inches (millimeters) unless otherwise noted.

F.A. RTE.	SECTION	COUNTY	TOTAL SHEETS	SHEET NO.
CONTRACT NO.				
FED. ROAD DIST. NO. ILLINOIS FED. AID PROJECT				