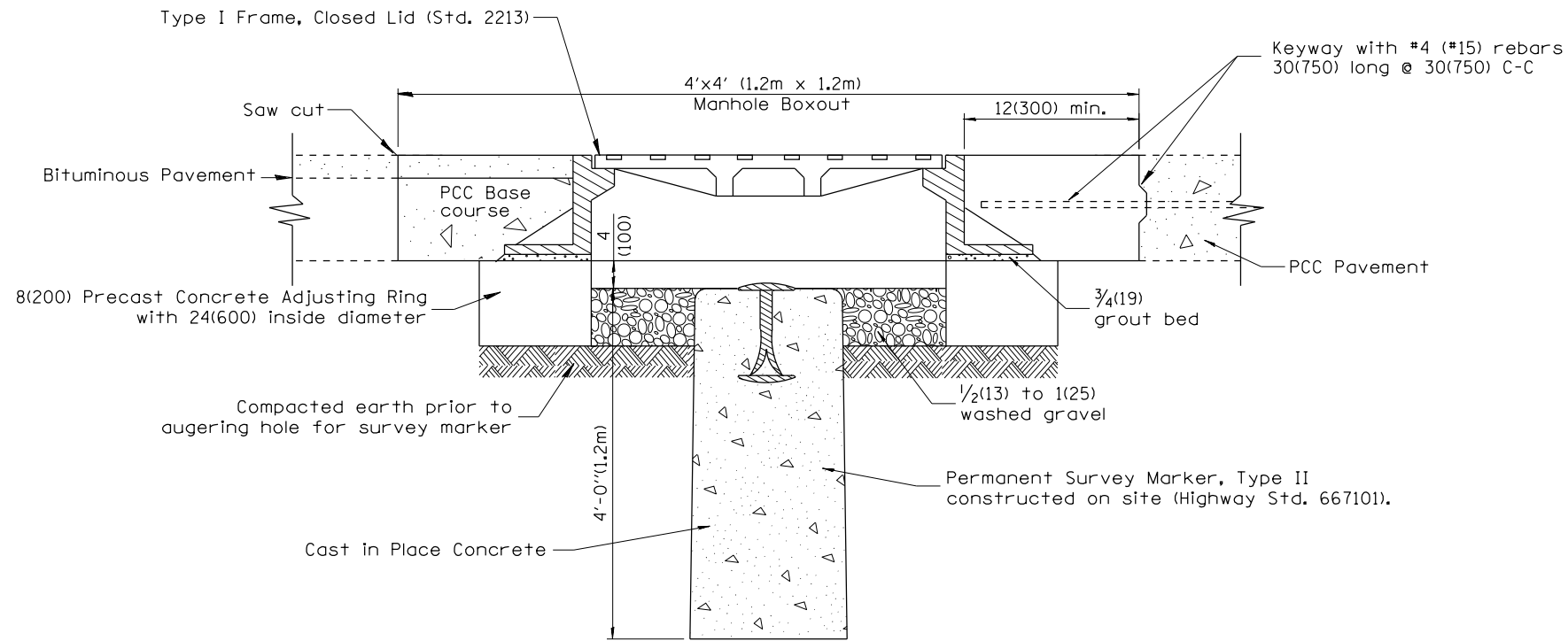
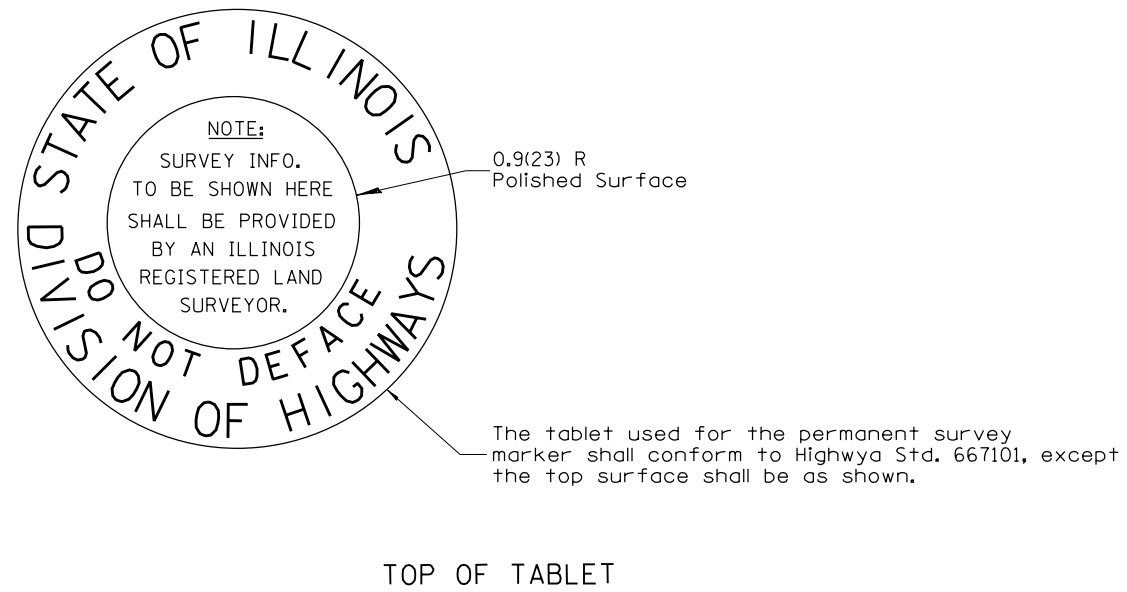


DESIGNER NOTES:  
 1. Include Highway Standard 667101 for PERMANENT SURVEY MARKERS.  
 2. Include District Special Provisions.  
 3. Check with the District Chief Surveyor prior to using this installation.



ELEVATION



GENERAL NOTES:

1. This work shall be performed in accordance with Article 667.04.

All dimensions are in inches (millimeters) unless otherwise noted.

01-01-97	RENUM. D-3.02, NEW REVISION BOX	T.P.																	
10-16-06	REVISED TO 2007 SPEC.	M.A.																	
01-06-11	REVISED FOR CORRECTIONS	R.D.																	
<b>STATE OF ILLINOIS DEPARTMENT OF TRANSPORTATION</b>										<b>PERMANENT SURVEY MARKER TYPE II (SPECIAL)</b>					NOT TO SCALE				
										CONTRACT NO.					CADD STD. 667106-D4				
										FED. ROAD DIST. NO.					ILLINOIS FED. AID PROJECT				