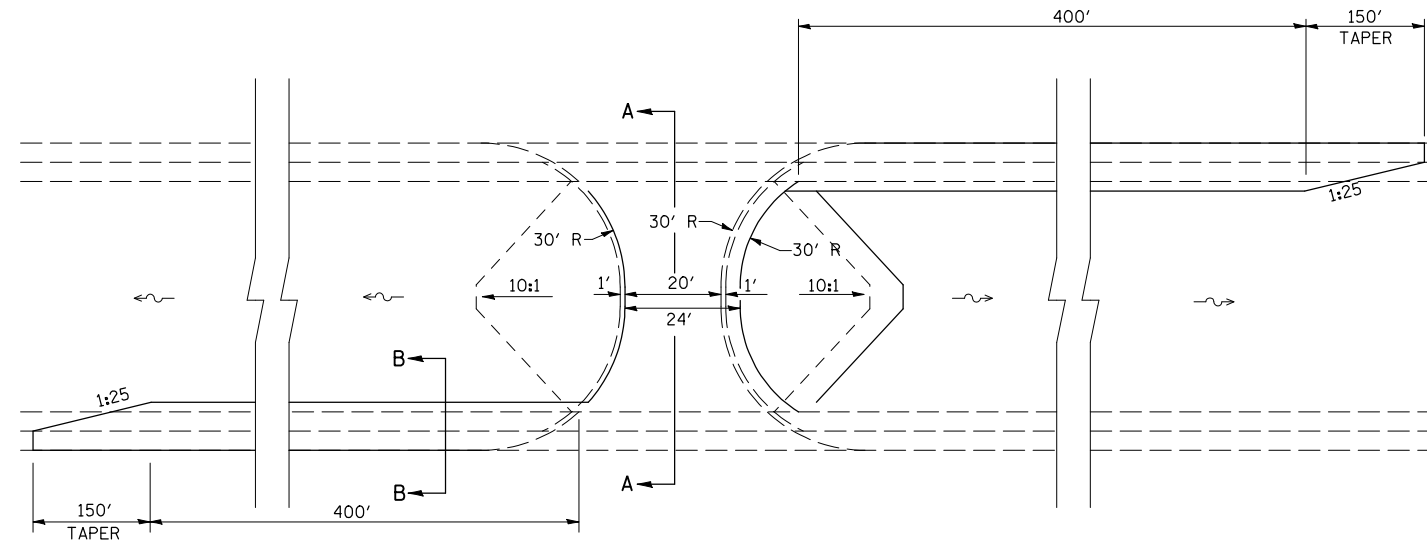
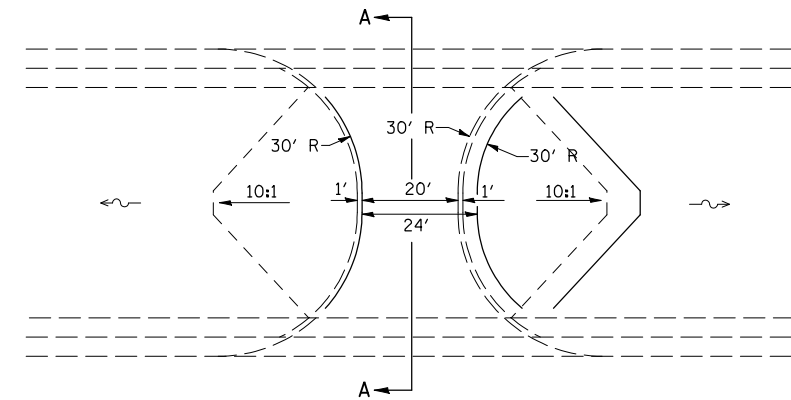


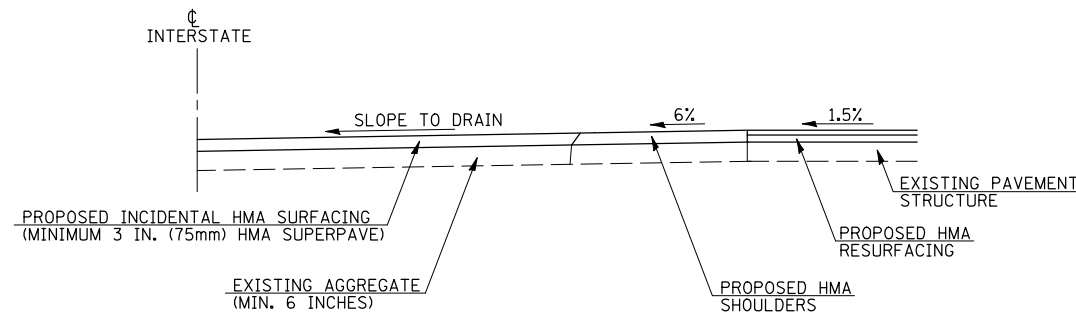
DESIGNER NOTE: SEE CHAPTER 50-2.08 OF BDE MANUAL CONSULT PROJECT ENGINEER FOR DECELERATION LANE APPLICATION



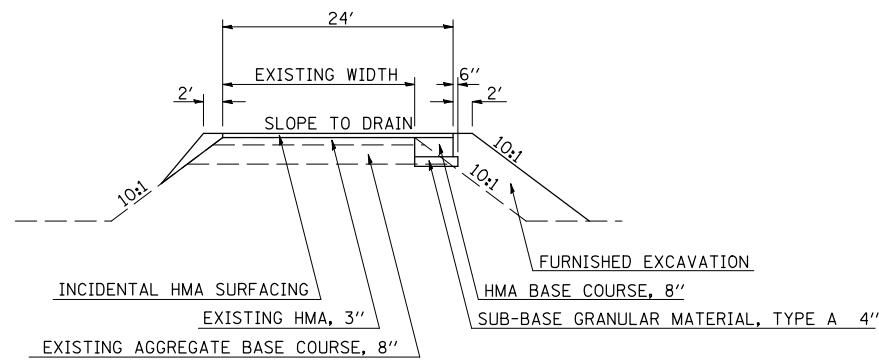
PLAN VIEW WITH DECELERATION LANES  
(USE AT "SPOT" LOCATIONS ONLY)



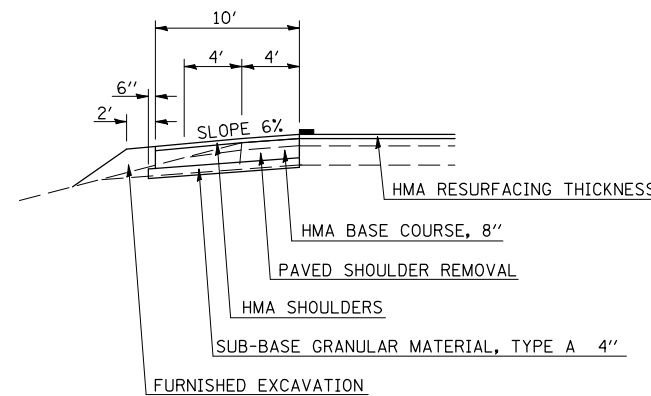
TYPICAL PLAN VIEW  
(STANDARD APPLICATION)



SECTION A-A  
SYMMETRICAL ABOUT CENTERLINE



ELEVATION



SECTION B-B

**GENERAL NOTES**

- OMIT SHOULDER RUMBLE STRIPS THROUGHOUT MEDIAN CROSSOVER AND DECELERATION LANES.
- REMOVAL OF EXISTING AGGREGATE SHOULDERS IS INCIDENTAL TO THE COST OF PROPOSED 8" BITUMINOUS CONCRETE BASE COURSE.

Note: All dimensions are in INCHES (millimeters) unless otherwise shown.

**DISTRICT 5 DETAIL NO. 35501316**

FILE NAME =	USER NAME = craigre	DESIGNED -	REVISED - 12/06 TJB
ct:\pw\work\PWIDOT\CRAIGRE\0101509\35501316.dgn		DRAWN -	REVISED -
PLOT SCALE = 40.0000' / IN.		CHECKED -	REVISED -
PLOT DATE = 1/7/2010		DATE -	REVISED -

**STATE OF ILLINOIS  
DEPARTMENT OF TRANSPORTATION**

**MEDIAN CROSSOVER**

SCALE: SHEET NO. OF SHEETS STA. TO STA.

F.A. RTE.	SECTION	COUNTY	TOTAL SHEETS	SHEET NO.
CONTRACT NO.				
ILLINOIS FED. AID PROJECT				