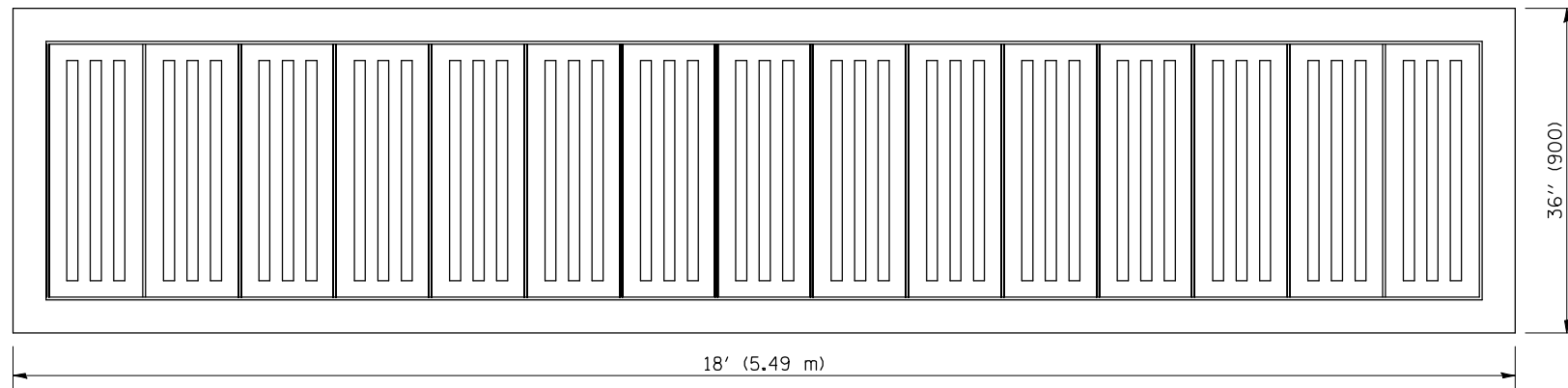
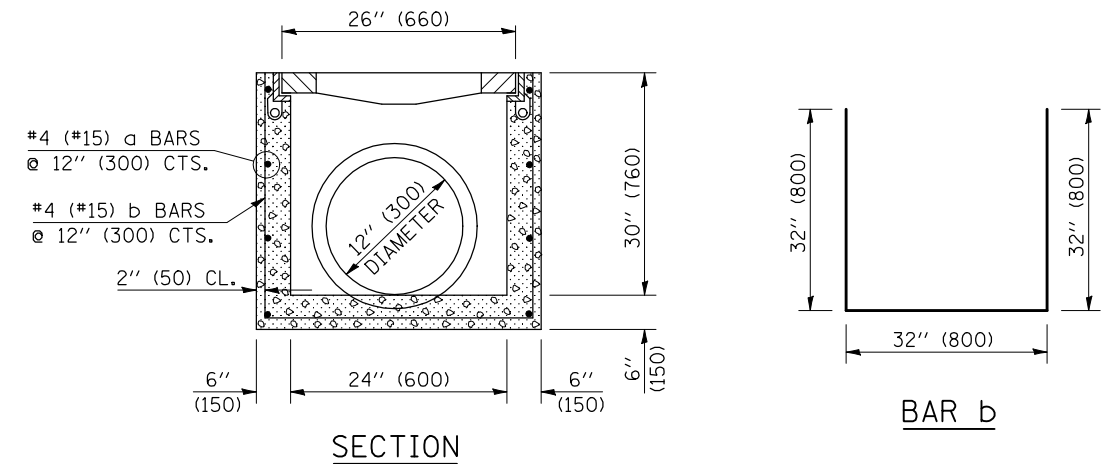


BILL OF MATERIALS			
BAR	QTY.	SIZE	LENGTH
a	10	#4 (#15)	17'-8" (5.39 m)
b	17	#4 (#15)	8'-0" (2.4 m)
c	8	#4 (#15)	2'-8" (800 mm)
CLASS SI CONCRETE	CU YD (m ³)		2.9 (2.2)
REINFORCEMENT BARS	LBS (kg)		230 (104)
GRATING	SQ YD (m ²)		4.13 (3.45)



PLAN



SECTION

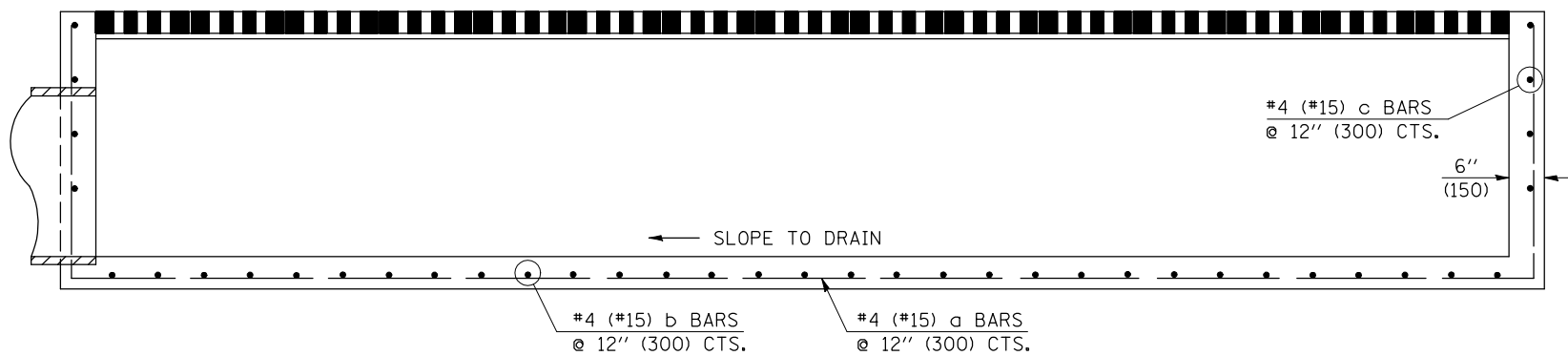
BAR b

GENERAL NOTES

CLASS SI CONCRETE SHALL BE USED THROUGHOUT. THE GRATING AND FRAME SHALL BE NEENAH GRATE NO. R-4990-H, BOLTED DOWN, GRATE OPENING TYPE "B" AND TYPE "X" FRAME OR APPROVED EQUAL. THE FRAME AND GRATE ARE TO BE DUCTILE IRON AND THE GRATES SHALL BE BOLTED TO THE FRAMES BY BRONZE CAP SCREWS.

THIS WORK WILL BE PAID FOR AT THE CONTRACT UNIT PRICE, EACH, FOR INLETS, SPECIAL, WHICH PRICE SHALL INCLUDE ALL MATERIAL AND LABOR, INCLUDING EXCAVATION, BACKFILL, CLASS SI CONCRETE, REINFORCEMENT BARS, FRAMES AND GRATING TO COMPLETE THE WORK AS SHOWN.

Note: All dimensions are in INCHES (millimeters) unless otherwise shown.



FILE NAME =	USER NAME = craigre	DESIGNED -	REVISED - 11/06
ct:\pw\work\PWIDOT\CRAIGRE\d0101509\60242400.dgn		DRAWN -	REVISED -
	PLOT SCALE = 40.000' / IN.	CHECKED -	REVISED -
	PLOT DATE = 1/7/2010	DATE -	REVISED -

STATE OF ILLINOIS
DEPARTMENT OF TRANSPORTATION

INLETS, SPECIAL

SCALE: SHEET NO. OF SHEETS STA. TO STA.

DISTRICT 5 DETAIL NO. 60242400

F.A. RTE.	SECTION	COUNTY	TOTAL SHEETS	SHEET NO.
CONTRACT NO.				
FED. ROAD DIST. NO. ILLINOIS FED. AID PROJECT				