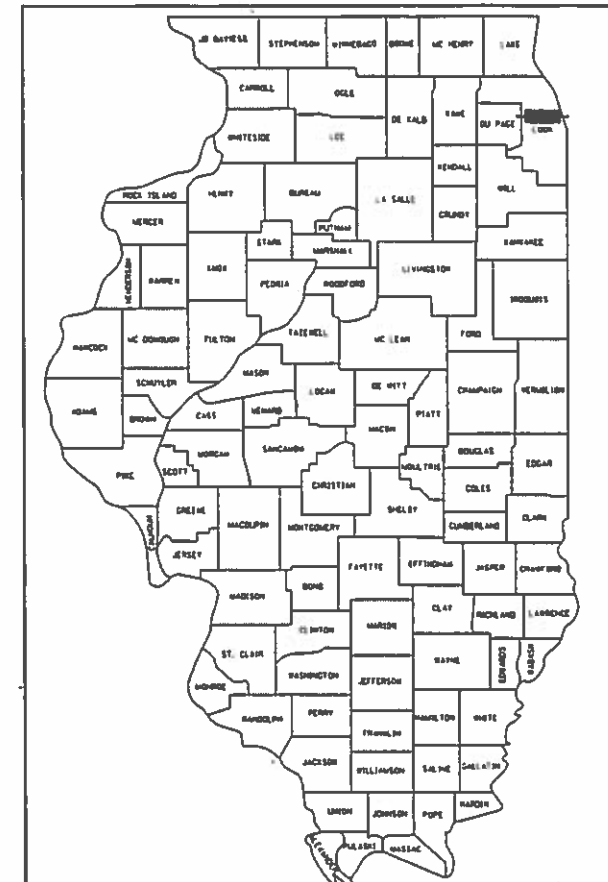


STATE OF ILLINOIS
 DEPARTMENT OF TRANSPORTATION
 DIVISION OF HIGHWAYS
**PROPOSED
 HIGHWAY PLANS**

F.A.I. 94 (INTERSTATE 94)
 AT FAU 1366 (MONTROSE AVENUE)
 SECTION 267-0101.3-B-R
 PROJECT: NHPP-XG1Q(992)
 BRIDGE SUPERSTRUCTURE, LIGHTING
 COOK COUNTY
 C-91-090-18

* 120 + 9 = 129 TOTAL SHEETS

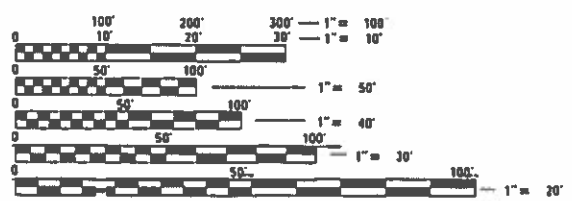
F.A.I. RTE.	SECTION	COUNTY	TOTAL SHEETS	SHEET NO.
94	267-0101.3-B-R	COOK	120	1
FED. ROAD DIST. NO. 1	ILLINOIS	CONTRACT NO. 62F95		



LOCATION OF SECTION INDICATED THUS: -

MONTROSE AVENUE
 ADT (2013) = 21,200
 ADT (2040) = 19,000
 DESIGN SPEED = 30 MPH
 POSTED SPEED = 30 MPH
 DESIGN DESIGNATION - MAJOR COLLECTOR
FAI 9094
 ADT (2017) = 285,000
 ADT (2032) = 336,192
 DESIGN SPEED = 55 MPH
 POSTED SPEED = 55 MPH
 DESIGN DESIGNATION - INTERSTATE

PROJECT LOCATED IN
 THE CITY OF CHICAGO



FULL SIZE PLANS HAVE BEEN PREPARED USING STANDARD ENGINEERING SCALES. REDUCED SIZED PLANS WILL NOT CONFORM TO STANDARD SCALES. IN MAKING MEASUREMENTS ON REDUCED PLANS, THE ABOVE SCALES MAY BE USED.

DIGGER
 1-312-744-7000

PROJECT ENGINEER: SULEYMAN TULGAR, P.E. (847) 705-4212
 PROJECT MANAGER: BRIAN KUTTAB, P.E. (847) 705-4431

CONTRACT NO. 62F95



PROJECT LENGTH
 NET AND GROSS LENGTH = 591 FT. = 0.11 MILES

IDOT PROJECT MANAGER: BRIAN KUTTAB, P.E., TEL (847) 705-4431

Ciorba Group, Inc.
 DESIGN FIRM
 REGISTRATION NUMBER
 184-001016
 CONSULTING ENGINEERS
 8725 W. HIGGINS RD, SUITE 600
 CHICAGO, ILLINOIS 60631 :: (773) 775-4009

STATE OF ILLINOIS
 DEPARTMENT OF TRANSPORTATION
 SUBMITTED August 8, 2019
Anthony J. Dunne REGIONAL ENGINEER
Oct 2, 2019
Oct 4, 2019
 ENGINEER OF DESIGN AND ENVIRONMENT
 DIRECTOR OF HIGHWAYS PROJECT IMPLEMENTATION

ROBERT A. SWANSON
 062-058800
 LICENSED PROFESSIONAL ENGINEER OF ILLINOIS
 DATE: 8/8/2019
 SEAL EXPIRES: 11/30/2021
 APPLIES TO SHEETS 31-35

BRETT W. SALTER
 062-252501
 LICENSED PROFESSIONAL ENGINEER OF ILLINOIS
 DATE: 8/8/2019
 SEAL EXPIRES: 11/30/2020
 APPLIES TO SHEETS 56-103

DUANE O'LAUGHLIN
 062-252501
 LICENSED PROFESSIONAL ENGINEER OF ILLINOIS
 DATE: 8/6/2019
 SEAL EXPIRES: 11/30/2021
 APPLIES TO SHEETS 1-30, 36-55, 104-120

REV. 10-24-2019

PRINTED BY THE AUTHORITY
 OF THE STATE OF ILLINOIS

INDEX OF SHEETS

SHEET NO.	DESCRIPTION
1	COVER SHEET
2	INDEX AND STANDARDS
3	GENERAL NOTES
4 - 13	SUMMARY OF QUANTITIES
14	TYPICAL SECTIONS
15	SCHEDULE OF QUANTITIES
16	ALIGNMENT, TIES AND BENCHMARKS
17	PLAN AND PROFILE
18	SUGGESTED STAGES OF CONSTRUCTION
19	DETOUR PLAN
20	TEMPORARY EXPRESSWAY SIGNING PLAN
21	TEMPORARY INFORMATION SIGNING
22 - 24	MAINTENANCE OF TRAFFIC
25	MOT SCHEDULES
26	EROSION CONTROL PLAN & PROPOSED DRAINAGE PLAN
27	EXISTING UTILITIES
28	DRAINAGE DETAILS
29	PAVEMENT MARKING PLAN
30 - 30F	TRAFFIC SIGNAL PLANS
31 - 35	CDOT LIGHTING PLANS
36 - 41C	CDOT ELECTRICAL DETAILS
42 - 51	IDOT UNDERPASS LIGHTING PLANS
52 - 55	IDOT ITS PLAN
56 - 103	STRUCTURAL PLAN
104 - 105	ADA DETAILS
106	DRIVEWAY DETAILS
107	BRIDGE APPROACH PAVEMENT CONNECTOR DETAIL
108 - 119	DISTRICT 1 DETAILS
120	CROSS SECTIONS

HIGHWAY STANDARDS

STANDARD NO.	LIST OF DESCRIPTION
000001-07	STANDARD SYMBOLS, ABBREVIATIONS AND PATTERNS
001001-02	AREAS OF REINFORCEMENT BARS
001006	DECIMAL OF AN INCH AND OF A FOOT
280001-07	TEMPORARY EROSION CONTROL SYSTEMS
420001-09	PAVEMENT JOINTS
420111-04	PCC PAVEMENT ROUNDOUTS
420401-13	BRIDGE CONNECTOR (PCC) FOR BRIDGE APPROACH SLAB
424001-11	PERPENDICULAR CURB RAMPS FOR SIDEWALKS
424021-05	DEPRESSED CORNER FOR SIDEWALKS
442201-03	CLASS C AND D PATCHES
515001-03	NAME PLATE FOR BRIDGES
602301-04	INLET - TYPE A
604001-04	FRAME & LIDS - TYPE 1
606001-07	CONCRETE CURB TYPE B AND COMBINATION CONCRETE CURB AND GUTTER
606301-04	PC CONCRETE ISLANDS AND MEDIANS
701400-09	APPROACH TO LANE CLOSURE, FREEWAY/EXPRESSWAY
701401-12	LANE CLOSURE, FREEWAY/EXPRESSWAY
701411-09	LANE CLOSURE, MULTILANE, AT ENTRANCE OR EXIT RAMP FOR SPEEDS > 45 MPH
701427-05	LANE CLOSURE, MULTILANE, INTERMITTENT OR MOVING OPER., FOR SPEEDS <= 40MPH
701428-01	TRAFFIC CONTROL, SETUP AND REMOVAL, FREEWAY/EXPRESSWAY
701446-09	TWO LANE CLOSURE, FREEWAY/EXPRESSWAY
701606-10	URBAN SINGLE LANE CLOSURE, MULTILANE, 2W WITH MOUNTABLE MEDIAN
701801-06	SIDEWALK, CORNER OR CROSSWALK CLOSURE
701901-08	TRAFFIC CONTROL DEVICES
704001-08	TEMPORARY CONCRETE BARRIER
782001-01	CURB REFLECTORS
782006-01	GUARDRAIL AND BARRIER WALL REFLECTOR MOUNTING DETAILS
812001	RACEWAY EMBEDDED IN STRUCTURE

IDOT DISTRICT 1 STANDARDS

STANDARD NO.	LIST OF DESCRIPTION
BE-702	MISCELLANEOUS ELECTRICAL DETAILS, SHEET A - (CABLE SPLICE, POLE WIRING, TRENCH DETAIL)
BE-801	TEMPORARY AERIAL CABLE INSTALLATION
BE-900	SUSPENDED MOUNT UNDERPASS LUMINAIRE INSTALLATION DETAILS
BD-17	CITY OF CHICAGO DETAILS FOR P.C. CONCRETE DRIVEWAY, ALLEY RETURN AND SIDEWALK
BD-58	CITY OF CHICAGO DETECTABLE WARNINGS
TC-08	ENTRANCE AND EXIT RAMP CLOSURE DETAILS
TC-09	TRAFFIC CONTROL DETAILS FOR FREEWAY SINGLE & MULTI -LANE WEAVE
TC-10	TRAFFIC CONTROL AND PROTECTION FOR SIDE ROADS, INTERSECTIONS, AND DRIVEWAYS
TC-16	SHORT-TERM PAVEMENT MARKING LETTERS AND SYMBOLS
TC-17	SHOULDER CLOSURES AND PARTIAL RAMP CLOSURES
TC-21	DETOUR SIGNING FOR CLOSING STATE HIGHWAYS
TC-22	ARTERIAL ROAD INFORMATION SIGN
TC-24	CITY OF CHICAGO TYPICAL PAVEMENT MARKINGS

DATE PLOTTED = 10/10/2019 14:47:37 PM
 PEN TABLE = N:\Standards\CAD\Bentley\Standards\1-001\Plotting\CGI+PDF+PDF+PLT+CTB
 PLOT CONFIG = N:\VPROJ\0020755201\Design\Hvac\Sheets\0020755201-Index.dwg
 FILE NAME =

REV. 10-24-2019



USER NAME = untitled	DESIGNED - MLH	REVISED - 10/22/2019 JMV
PLOT SCALE = 2.0000' / in.	DRAWN - MLH	REVISED -
PLOT DATE = 10/10/2019	CHECKED - EPS	REVISED -
	DATE - 8/12/2019	REVISED -

STATE OF ILLINOIS
DEPARTMENT OF TRANSPORTATION

F.A.I. 94 (INTERSTATE 94) AT MONTROSE AVENUE
INDEX AND STANDARDS

SCALE: 1" = 50' SHEET NO. 1 OF 1 SHEETS STA. TO STA.

F.A.I. RTE.	SECTION	COUNTY	TOTAL SHEETS	SHEET NO.
94	267-0101.3-B-R	COOK	120	2
CONTRACT NO.				62F95
ILLINOIS FED. AID PROJECT NHPP-XG101992				

CODE NO.	ITEM	UNIT	TOTAL QUANTITY	CONSTRUCTION CODE			
				90% FED 10% STATE			
				RDWY	BRIDGE REHAB	LIGHTING	SIGNALS
				0004	0013	0021	0021
					SN 016-0852		
20200100	EARTH EXCAVATION	CU YD	275	275			
20800150	TRENCH BACKFILL	CU YD	29	29			
21101625	TOPSOIL FURNISH AND PLACE, 6"	SQ YD	48	48			
25000200	SEEDING, CLASS 2	ACRE	0.25	0.25			
25000400	NITROGEN FERTILIZER NUTRIENT	POUND	1	1			
25000600	POTASSIUM FERTILIZER NUTRIENT	POUND	1	1			
25100630	EROSION CONTROL BLANKET	SQ YD	48	48			
28000400	PERIMETER EROSION BARRIER	FOOT	28	28			
28000510	INLET FILTERS	EACH	12	12			
30300001	AGGREGATE SUBGRADE IMPROVEMENT	CU YD	90	90			
42001300	PROTECTIVE COAT	SQ YD	254	254			
42300400	PORTLAND CEMENT CONCRETE DRIVEWAY PAVEMENT, 8 INCH	SQ YD	33	33			
42400200	PORTLAND CEMENT CONCRETE SIDEWALK 5 INCH	SQ FT	1,677	1,677			
44000100	PAVEMENT REMOVAL	SQ YD	337	337			
44000500	COMBINATION CURB AND GUTTER REMOVAL	FOOT	250	250			

* DENOTES SPECIALTY ITEM

DATE PLOTTED = 8/16/2019 1:48:45 PM
 PEN TABLE = 0020795.01.tbl
 PLOT CONFIG = C:\1007C\00\CONV\Plotting\COI_PDF.ctb
 FILE NAME = N:\PROJ\0020795.01\Design\Inspec\Sheets\0020795.01-ssq01.dgn

△ REV. 10-24-2019



ENGINEERING CONSULTANT	USER NAME = ehern	DESIGNED - DTJ	REVISED -
		DRAWN - DTJ	REVISED -
	PLOT SCALE = 2.0000' / in.	CHECKED - JMV	REVISED -
	PLOT DATE = 8/16/2019	DATE - 8/12/2019	REVISED -

STATE OF ILLINOIS
DEPARTMENT OF TRANSPORTATION

F.A.I. 94 (INTERSTATE 94) AT MONTROSE AVENUE
SUMMARY OF QUANTITIES

SCALE: N.T.S. SHEET NO. 1 OF 10 SHEETS STA. TO STA.

F.A.I. RTE.	SECTION	COUNTY	TOTAL SHEETS	SHEET NO.
94	267-0101.3-B-R	COOK	120	4
CONTRACT NO. 62F95			ILLINOIS FED. AID PROJECT N#PP-XG101992	

DATE PLOTTED = 8/16/2019 1:48:46 PM
 PLOT TABLE = C:\10070700\CONV\Plotting\COI.PDF.ctb
 FILE NAME = N:\PROJ\0828775\01\Design\Sheet\0828775.dwg

CODE NO.	ITEM	UNIT	TOTAL QUANTITY	CONSTRUCTION CODE			
				90% FED 10% STATE			
				RDWY	BRIDGE REHAB	LIGHTING	SIGNALS
				0004	0013	0021	0021
					SN 016-0852		
* 87302305	ELECTRIC CABLE AERIAL SUSPENDED, COMMUNICATION, NO. 16 3 PAIR	FOOT	730	730			
* 87900200	DRILL EXISTING HANDHOLE	EACH	11			11	
* 88040150	SIGNAL HEAD, POLYCARBONATE, LED, 1-FACE, 5-SECTION, BRACKET MOUNTED	EACH	4				4
* 89502300	REMOVE ELECTRIC CABLE FROM CONDUIT	FOOT	2,116	807		1,165	144
* 89502385	REMOVE EXISTING CONCRETE FOUNDATION	EACH	1				1
* X0322708	REMOVE EXISTING STREET LIGHTING EQUIPMENT	EACH	1			1	
X0322917	PROPOSED STORM SEWER CONNECTION TO EXISTING MANHOLE	EACH	3	3			
* X0323524	REMOVE EXISTING SURVEILLANCE CAMERA EQUIPMENT	EACH	1	1			
* X0324198	REMOVAL OF ASBESTOS CEMENT CONDUIT	FOOT	2,398			2,398	
* X0324571	MAINTENANCE OF STREET LIGHTING SYSTEM (CITY OF CHICAGO)	L SUM	1			1	
* X0325527	REMOVE & REINSTALL SIGNAL EQUIPMENT	L SUM	1				1
* X0326326	CABLE IN CONDUIT, TRIPLEX, 2-1/C NO. 6 AND 1-1/C NO. 8 GROUND	FOOT	1,268			1,268	
* X0326968	JUNCTION BOX, POLE OR POST MOUNTED	EACH	1				1
* X0327753	REMOVE AND REINSTALL CAMERA POLE	EACH	1	1			
X0327976	TRACK MONITORING	CAL DA	200	200			
* X1400081	FULL-ACTUATED CONTROLLER AND TYPE SUPER P CABINET (SPECIAL)	EACH	2				2
* X1400083	UNDERGROUND CONDUIT, PVC, 3" DIA. SCHEDULE 80 (CHICAGO)	FOOT	114				114

* DENOTES SPECIALTY ITEM

1

1

REV. 10-24-2019



USER NAME = ehern	DESIGNED - DTJ	REVISED -
	DRAWN - DTJ	REVISED -
PLOT SCALE = 2.0000' / in.	CHECKED - JMV	REVISED -
PLOT DATE = 8/16/2019	DATE - 8/12/2019	REVISED -

STATE OF ILLINOIS
DEPARTMENT OF TRANSPORTATION

F.A.I. 94 (INTERSTATE 94) AT MONTROSE AVENUE
SUMMARY OF QUANTITIES

SCALE: N.T.S. SHEET NO. 7 OF 10 SHEETS STA. TO STA.

F.A.I. RTE.	SECTION	COUNTY	TOTAL SHEETS	SHEET NO.
94	267-0101.3-B-R	COOK	120	10
CONTRACT NO. 62F95			ILLINOIS FED. AID PROJECT N#PP-XG101992	

DATE PLOTTED = 8/16/2019 1:48:47 PM
 PEN TABLE = C:\100707C40\CONV\Plotting\COL_PDF.ctb
 FILE NAME = N:\PROJ\08227755\01\Design\Inspec\Sheets\08227755.dwg - s04.dwg

CODE NO.	ITEM	UNIT	TOTAL QUANTITY	CONSTRUCTION CODE			
				90% FED 10% STATE			
				RDWY	BRIDGE REHAB	LIGHTING	SIGNALS
				0004	0013	0021	0021
				SN 016-0852			
△ X5538200	STORM SEWERS TO BE CLEANED 24"	FOOT	1,000	1,000			
X6030310	FRAMES AND LIDS TO BE ADJUSTED (SPECIAL)	EACH	4			4	
X6060714	CONCRETE MEDIAN (SPECIAL)	SQ FT	305	305			
X6640210	TEMPORARY CHAIN LINK FENCE (PORTABLE)	FOOT	820	820			
X6700410	ENGINEER'S FIELD OFFICE, TYPE A (SPECIAL)	CAL MO	16	16			
X7010216	TRAFFIC CONTROL AND PROTECTION, (SPECIAL)	L SUM	1	1			
X7011015	TRAFFIC CONTROL AND PROTECTION (EXPRESSWAYS)	L SUM	1	1			
X7030005	TEMPORARY PAVEMENT MARKING REMOVAL	SQ FT	598	598			
X7040125	PINNING TEMPORARY CONCRETE BARRIER	EACH	48	48			
* X8210312	PROTECTION AND MAINTENANCE OF EXISTING UNDERPASS LIGHTING (SPECIAL)	L SUM	1			1	
* X8300100	LIGHT POLE, ALUMINUM, WITH MAST ARM, INSTALL ONLY	EACH	8			8	
* X8780107	CONCRETE FOUNDATION (SPECIAL)	FOOT	5				5
* X1400381	CABLE, SPECIAL	FOOT	85				85
* X1400382	ELECTRIC CABLE IN CONDUIT, SIGNAL NO. 14 19/C	FOOT	151				151
Z0004552	APPROACH SLAB REMOVAL	SQ YD	539	539			

* DENOTES SPECIALTY ITEM
 △ NON- PARTICIPATING

85



△ REV. 10-24-2019

REV. - MS



ENGINEERING CONSULTANT	USER NAME = ehern	DESIGNED - DTJ	REVISED -
		DRAWN - DTJ	REVISED -
	PLOT SCALE = 2.0000' / in.	CHECKED - JMV	REVISED -
	PLOT DATE = 8/16/2019	DATE - 8/12/2019	REVISED -

STATE OF ILLINOIS
DEPARTMENT OF TRANSPORTATION

F.A.I. 94 (INTERSTATE 94) AT MONTROSE AVENUE
SUMMARY OF QUANTITIES

SCALE: N.T.S. SHEET NO. 9 OF 10 SHEETS STA. TO STA.

F.A.I. RTE.	SECTION	COUNTY	TOTAL SHEETS	SHEET NO.
94	267-0101.3-B-R	COOK	120	12
CONTRACT NO. 62F95				
ILLINOIS FED. AID PROJECT N#PP-XG101992				

SUGGESTED STAGES OF CONSTRUCTION

PRE STAGE

1. THE CONTRACTOR SHALL SET UP DETOUR ROUTE AND SIGNING. SIGNS SHALL REMAIN COVERED UNTIL DETOUR IS IN EFFECT.
2. THE CONTRACTOR SHALL SET UP CHANGEABLE MESSAGE SIGNS AT THE LOCATIONS SHOWN IN THE PLANS A MINIMUM OF TWO WEEKS PRIOR TO THE START OF CONSTRUCTION.
3. THE CONTRACTOR SHALL REPLACE EXISTING 'P-TYPE' TRAFFIC SIGNAL CONTROLLERS WITH 'SUPER-P TYPE' AND INSTALL SIGNAL HEADS FOR RIGHT-TURN MOVEMENTS AT THE INTERSECTIONS OF CICERO AVE/MONTROSE AVE AND PULASKI RD AVE/MONTROSE AVE. SEE SIGNAL PLANS FOR MORE INFORMATION.
4. THE CONTRACTOR SHALL IMPLEMENT TEMPORARY TRAFFIC SIGNAL TIMINGS AT FOUR LOCATIONS. SEE TEMPORARY TRAFFIC SIGNAL TIMING SCHEDULES.

STAGE 1

CONSTRUCTION:

1. REMOVAL OF SOUTH SIDEWALK, SOUTH CURB AND GUTTER, PAVEMENT, MEDIAN, AND BRIDGE DECK AS SHOWN ON PLANS.
2. CONSTRUCT THE SIDEWALK, CURB AND GUTTER, BRIDGE APPROACH PAVEMENT CONNECTOR AND BRIDGE IMPROVEMENTS AS SHOWN ON PLANS.
3. CDOT LIGHTING - DISCONNECT EXISTING CDOT LIGHTING ALONG SOUTH BRIDGE PARAPET. LIGHTING ALONG NORTH BRIDGE PARAPET TO REMAIN IN SERVICE.
4. IDOT LIGHTING - INSTALL TEMPORARY AERIAL CABLE AS NECESSARY TO POWER EXISTING UNDERPASS LIGHTING BENEATH THE STAGE 2 CONSTRUCTION AREA. REMOVE UNDERPASS LIGHTING UNDER THE STAGE 1 AREA ONLY.

MAINTENANCE OF TRAFFIC:

1. SIDEWALK ON THE SOUTH SIDE OF MONTROSE AVENUE AND THE SOUTH ACCESS ONTO THE CTA BLUE LINE MONTROSE STOP SHALL BE CLOSED.
2. THE CONTRACTOR SHALL PLACE TEMPORARY PAVEMENT MARKINGS, TEMPORARY CONCRETE BARRIER WALL, AND BARRICADES AT THE LOCATIONS SHOWN IN THE PLANS.
3. INSTALL STOP SIGNS AT EXISTING TRAFFIC SIGNALS AT MONTROSE AVENUE/WESTBOUND I-90/94 EXIT RAMP/KILBOURN AVENUE. TRAFFIC SIGNAL SHALL BE PLACED IN "FLASHING RED" MODE FOR ALL APPROACHES.
4. MONTROSE AVENUE WILL BE CLOSED FOR THE DURATION OF THE PROJECT TO VEHICULAR TRAFFIC. TRAFFIC WILL BE DETOURED USING CICERO AVENUE (IL-50), IRVING PARK ROAD (IL-19), AND PULASKI ROAD.
5. EASTBOUND LANE CLOSURE ON MONTROSE SHALL FOLLOW IDOT STANDARD 701606 AND TRAFFIC WILL ONLY BE ABLE TO ENTER RAMP ONTO EASTBOUND I-90/94. LANE CLOSURE ON NORTHBOUND I-90/94 EXIT RAMP 43C TO WESTBOUND MONTROSE AVENUE SHALL FOLLOW DISTRICT STANDARD TC-17. RAMP SHALL REMAIN OPEN AT ALL TIMES. ALL RAMP CLOSURES SHALL BE APPROVED BY THE ENGINEER.
6. SIDEWALK ON THE NORTH SIDE OF MONTROSE AVENUE SHALL BE MAINTAINED FOR PEDESTRIAN ACCESS ONTO THE CTA BLUE LINE NORTH MONTROSE STATION AND MUST BE OPEN AT ALL TIMES.
7. SHOULDER CLOSURES, LANE CLOSURES, AND FULL CLOSURES OF I-90/94 SHALL FOLLOW DISTRICT STANDARD TC-17 AND IDOT STANDARDS 701401, 701428, 701446 IN ACCORDANCE WITH THE KEEPING THE EXPRESSWAY OPEN TO TRAFFIC SPECIAL PROVISION. WORK CANNOT BE DONE ON BOTH SHOULDERS AT THE SAME TIME.

STAGE 2

CONSTRUCTION:

1. REMOVAL OF NORTH SIDEWALK, CURB AND GUTTER, PAVEMENT, MEDIAN, AND BRIDGE AS SHOWN ON PLANS.
2. CONSTRUCT THE SIDEWALK, CURB AND GUTTER, BRIDGE APPROACH PAVEMENT CONNECTOR AND BRIDGE IMPROVEMENTS AS SHOWN ON PLANS.
3. CDOT LIGHTING - INSTALL AND ENERGIZE PROPOSED LIGHTING ALONG SOUTH BRIDGE PARAPET.
4. IDOT LIGHTING - REMOVE REMAINING UNDERPASS LIGHTING.

MAINTENANCE OF TRAFFIC:


1. THE CONTRACTOR SHALL PLACE TEMPORARY PAVEMENT MARKINGS, TEMPORARY CONCRETE BARRIER WALL, AND BARRICADES AT THE LOCATIONS SHOWN IN THE PLANS. THE NEWLY CONSTRUCTED SOUTH SIDE OF THE BRIDGE WILL BE OPEN TO PEDESTRIANS.
2. SAME AS STAGE 1 EXCEPT FOR PEDESTRIAN TRAFFIC WILL BE ON NEWLY CONSTRUCTED SIDEWALK ON THE SOUTHSIDE OF MONTROSE AVENUE.

SPECIAL NOTES

1. SIDEWALK ON THE OUTSIDE OF THE MONTROSE BRIDGE SHALL REMAIN OPEN TO PEDESTRIANS AT ALL TIMES DURING CONSTRUCTION TO MAINTAIN ACCESS TO THE CTA STATION. CTA STATION ACCESS SHALL BE MAINTAINED ON AT LEAST ONE SIDE AT ALL TIMES. A MINIMUM SIDEWALK CLEAR ZONE WIDTH TO BE OPEN AT ALL TIMES SHALL BE 5 FOOT.
2. SIDEWALK LOCATED AT 25+80 LT SHALL BE MAINTAINED DURING ALL STAGES OF CONSTRUCTION.
3. ON AND OFF RAMP TO AND FROM THE JFK EXPRESSWAY TO MONTROSE AVENUE ARE TO REMAIN OPEN AT ALL TIMES WITH LIMITED NIGHT TIME CLOSURE, IF APPROVED BY THE DEPARTMENT IN ADVANCE.
4. THE CONTRACTOR SHALL REQUEST AND GAIN APPROVAL FROM THE ILLINOIS DEPARTMENT OF TRANSPORTATION'S EXPRESSWAY TRAFFIC OPERATIONS ENGINEER AT WWW.IDOTLCS.COM TWENTY-FOUR (24) HOURS IN ADVANCE OF ALL DAILY LANE, RAMP AND SHOULDER CLOSURES AND 7 DAYS IN ADVANCE OF ALL PERMANENT AND WEEKEND CLOSURE ON ALL FREEWAYS AND/OR EXPRESSWAYS IN DISTRICT ONE. THIS ADVANCED NOTIFICATION IS CALCULATED BASED ON WORK WEEK OF MONDAY THROUGH FRIDAY AND SHALL NOT INCLUDE WEEKENDS OR HOLIDAYS.
5. ACCESS TO COMMERCIAL ENTRANCES MUST REMAIN OPEN AT ALL TIMES.
6. NEWSPAPER BOXES AND BENCHES IN THE CONSTRUCTION ZONE SHALL BE REMOVED, STORED, AND REINSTALLED BY THE CONTRACTOR. THIS WORK SHALL BE INCLUDED IN THE COST OF REMOVAL OF EXISTING SUPERSTRUCTURE.
7. CONTRACTOR TO PLACE AND SECURE FENCE IN FRONT OF CTA STAIRWAYS ON UPPER AND LOWER LEVELS BEFORE EACH STAGE OF CONSTRUCTION TO PREVENT PEDESTRIANS FROM ENTERING WORK ZONE. THE CONTRACTOR SHALL PROVIDE SUFFICIENT BARRICADES AND/OR FENCE ON CTA PLATFORM TO PREVENT PEDESTRIAN ACCESS UNDER MONTROSE AVENUE.
8. BRIDGE REMOVAL AND RECONSTRUCTION SHALL BE DONE IN ACCORDANCE WITH THE KEEPING THE EXPRESSWAY OPEN TO TRAFFIC AND CTA FLAGGING AND COORDINATION SPECIAL PROVISIONS.
9. CONTRACTOR MUST REFER TO "KEEPING THE EXPRESSWAY OPEN TO TRAFFIC" AND "BRIDGE DEMOLITION AND ERECTION" CONTRACT SPECIAL PROVISIONS FOR CLARIFICATION ON TRAFFIC CONTROL AND ALLOWABLE LANE CLOSURE HOURS FOR FULL STOPS TO EXECUTE DEMOLITION AND ERECTION OF BEAMS.
10. CONTRACTOR MUST SUBMIT TO THE BUREAU OF TRAFFIC A MAINTENANCE OF TRAFFIC PLAN (MOT) FOR ALL PROPOSED FULL STOPS, PLAN MUST INCLUDE LOCATION OF ALL EQUIPMENT USED TO PICK AND SET BEAMS DURING ERECTION AND DEMOLITION OF ALL BEAMS AND LOCATION OF ANY STRUCTURAL SUPPORT STRUCTURE APPURTENANCES.

DATE PLOTTED = 10/10/2019 14:49:54 PM
 PEN TABLE = N:\Standards\CAD\Bentley\Standards\IL-DOT\Plotting\CCI-PDF-plc1c1g
 PLOT CONFIG = 002075101.tbl
 FILE NAME = N:\VPROJ\002075101\Design\VDI\002075101.mo\01_Stageing_Descrip101on.dgn

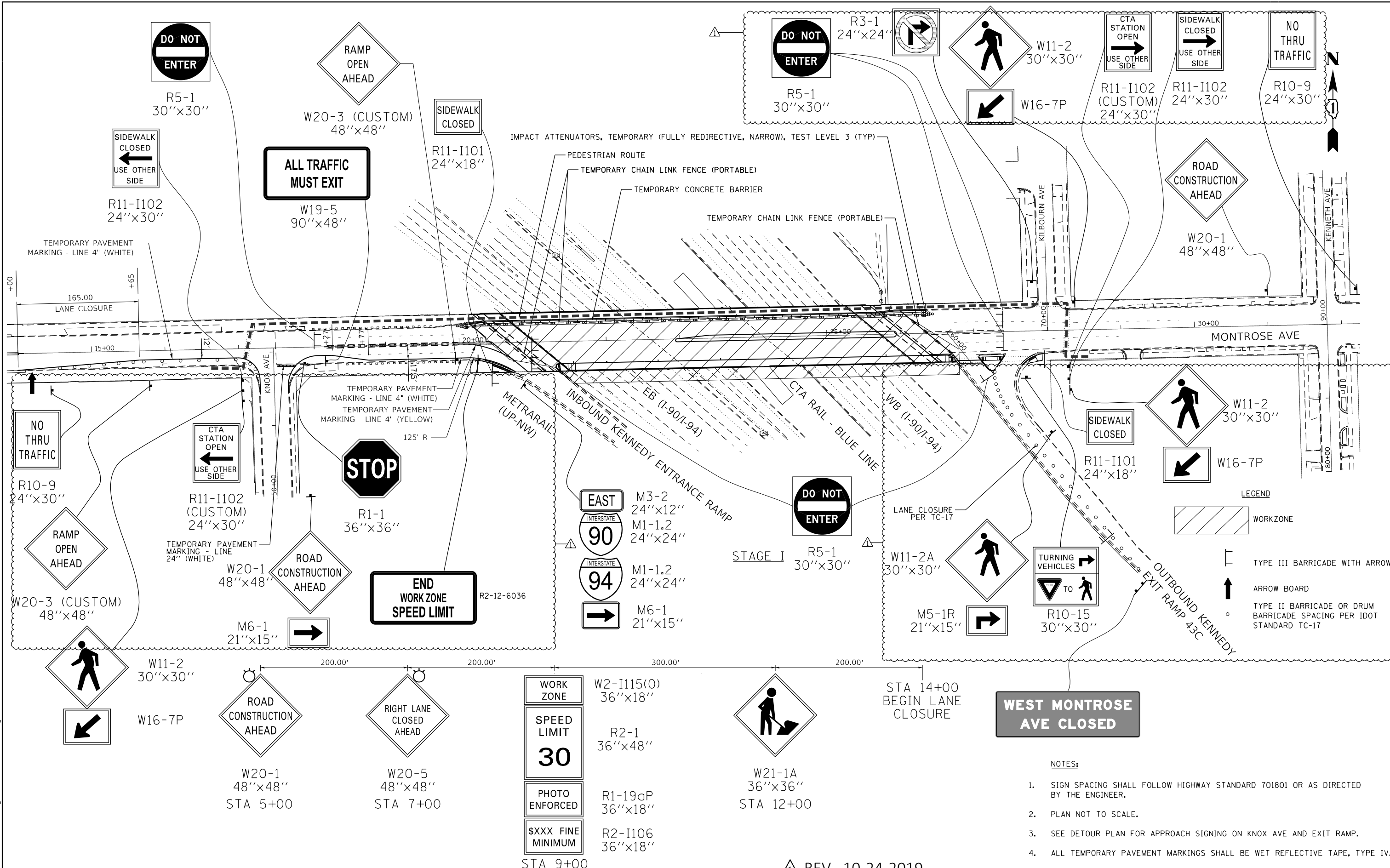
△ REV. 10-24-2019

 ENGINEERING CONSULTANT 8725 W. Higgins Road, Suite 600 Chicago, IL 60631 P 773.775.6009 www.ciorba.com	USER NAME = untitled	DESIGNED - MLH DRAWN - MLH	REVISED - 10/22/2019 JMV REVISED -	STATE OF ILLINOIS DEPARTMENT OF TRANSPORTATION	F.A.I. 94 (INTERSTATE 94) AT MONTROSE AVENUE SUGGESTED STAGES OF CONSTRUCTION	F.A.I. RTE. = 94	SECTION = 267-0101.3-B-R	COUNTY = COOK	TOTAL SHEETS = 120	SHEET NO. = 18
	PLOT SCALE = 2.0000' / in. PLOT DATE = 10/10/2019	CHECKED - EPS DATE = 8/12/2019	REVISED -			SCALE: 1" = 50' SHEET NO. 1 OF 1 SHEETS STA. TO STA.	CONTRACT NO. 62F95 ILLINOIS FED. AID PROJECT NHPP-XG101992			

PLAN	SURVEYED	DATE
	PLOTTED	BY
	NOTES CHECKED	
	ALIGNMENT CHECKED	
	FILE NAME	
	NO.	

PROFILE	SURVEYED	DATE
	PLOTTED	BY
	GRADES CHECKED	
	STRUCTURE NOTATIONS CHECKED	
	NO.	

DATE PLOTTED = 10/10/2019 4:18:05 PM
 PEN TABLE = C:\VDD\TCAD\CON\PenTable.tbl
 PLOT CONFIG = AS:\VDD\TCAD\CON\PlotConfig.ctb
 FILE NAME = AS:\VDD\TCAD\CON\102219\102219.dgn



ADVANCED SIGNING DETAIL

REV. 10-24-2019

WEST MONTROSE AVE CLOSED

- NOTES:
- SIGN SPACING SHALL FOLLOW HIGHWAY STANDARD 701801 OR AS DIRECTED BY THE ENGINEER.
 - PLAN NOT TO SCALE.
 - SEE DETOUR PLAN FOR APPROACH SIGNING ON KNOX AVE AND EXIT RAMP.
 - ALL TEMPORARY PAVEMENT MARKINGS SHALL BE WET REFLECTIVE TAPE, TYPE IV.
 - LIGHTS ON BARRICADES SHALL FOLLOW LIGHTS ON BARRICADE SPECIAL PROVISION.

ENGINEERING CONSULTANT
CiorbaGroup
 8725 W. Higgins Road, Suite 600 Chicago, IL 60631
 P 773.775.6009 | www.ciorba.com

USER NAME = untitled	DESIGNED - MLH	REVISIONS
DESIGNED - MLH	CHECKED - EPS	10/22/2019 MLH
PLLOT SCALE = 1/28.0000" = 1" = 28.0000'	DRAWN - MLH	
PLLOT DATE = 10/10/2019	CHECKED - 8/12/2019	
	REVISIONS	

STATE OF ILLINOIS
 DEPARTMENT OF TRANSPORTATION

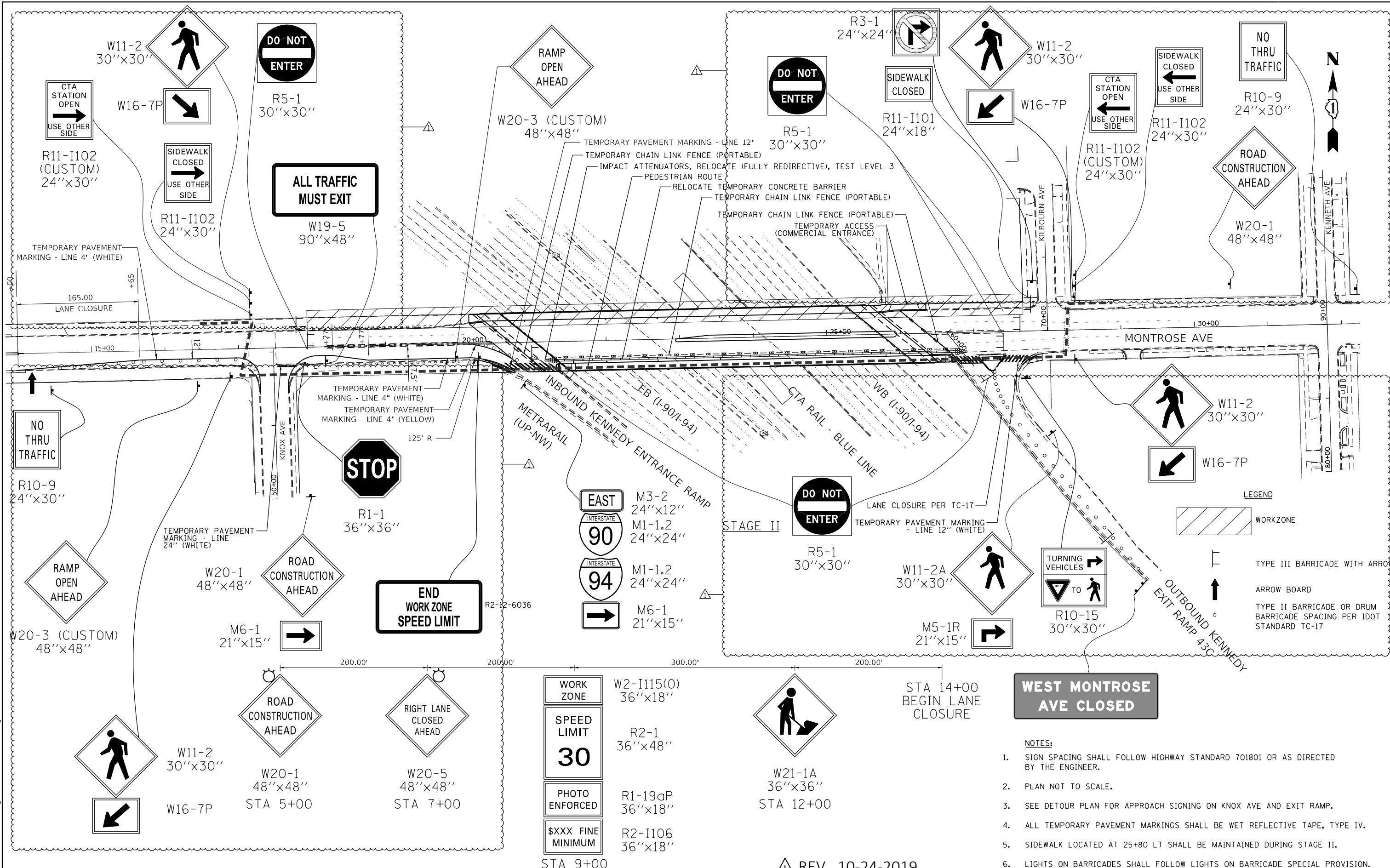
F.A.I. 94 (INTERSTATE 94) AT MONTROSE AVENUE
 MAINTENANCE OF TRAFFIC
 SCALE: N.T.S. SHEET NO. 2 OF 3 SHEETS STA. 14+00 TO STA. 32+00

F.A.I. RTE.	SECTION	COUNTY	TOTAL SHEETS	SHEET NO.
94	267-0101.3-B-R	COOK	120	23
CONTRACT NO. 62F95				
ILLINOIS FED. AID PROJECT NHPP-XG1019921				

PLAN	SURVEYED	DATE
NOTE BOOK	PLOTTED	BY
NO.	ALIGNED	
	CHECKED	
	FILED	
	DATE	

PROFILE	SURVEYED	DATE
NOTE BOOK	PLOTTED	BY
NO.	ALIGNED	
	CHECKED	
	FILED	
	DATE	

DATE PLOTTED = 10/10/2019 4:18:06 PM
 PEN TABLE = 00207501.tbl
 PLOT CONFIG = C:\VDD\TCAD\CGI\Plotting\CGI_Plot.ctb
 FILE NAME = N:\VDD\1002219\1002219.dgn



LEGEND

[Hatched Box]	WORKZONE
[Arrow]	TYPE III BARRICADE WITH ARROW
[Up Arrow]	ARROW BOARD
[Barricade]	TYPE II BARRICADE OR DRUM BARRICADE SPACING PER IDOT STANDARD TC-17

WEST MONTROSE AVE CLOSED

- NOTES:
- SIGN SPACING SHALL FOLLOW HIGHWAY STANDARD 701801 OR AS DIRECTED BY THE ENGINEER.
 - PLAN NOT TO SCALE.
 - SEE DETOUR PLAN FOR APPROACH SIGNING ON KNOX AVE AND EXIT RAMP.
 - ALL TEMPORARY PAVEMENT MARKINGS SHALL BE WET REFLECTIVE TAPE, TYPE IV.
 - SIDEWALK LOCATED AT 25+80 LT SHALL BE MAINTAINED DURING STAGE II.
 - LIGHTS ON BARRICADES SHALL FOLLOW LIGHTS ON BARRICADE SPECIAL PROVISION.

REV. 10-24-2019

ADVANCED SIGNING DETAIL

ENGINEERING CONSULTANT
CiorbaGroup
 8725 W. Higgins Road, Suite 600 Chicago, IL 60631
 P 773.775.4009 | www.ciorba.com

USER NAME =	untitled
DESIGNED -	MLH
CHECKED -	EPS
REVISOR -	10/22/2019 MLH
PLLOT SCALE =	128.0000' / in.
DRAWN -	MLH
REVISOR -	
PLLOT DATE =	10/10/2019
CHECKED -	8/12/2019
REVISOR -	

STATE OF ILLINOIS
 DEPARTMENT OF TRANSPORTATION

F.A.I. 94 (INTERSTATE 94) AT MONTROSE AVENUE
 MAINTENANCE OF TRAFFIC
 SCALE: N.T.S. SHEET NO. 3 OF 3 SHEETS STA. 14+00 TO STA. 32+00

F.A.I. RTE.	SECTION	COUNTY	TOTAL SHEETS	SHEET NO.
94	267-0101.3-B-R	COOK	120	24
CONTRACT NO.				62F95
ILLINOIS FED. AID PROJECT NHP-XXG101992				

PLAN	SURVEYED	BY	DATE
NOTE BOOK NO.	PLOTTED		
	ALIGNMENT CHECKED		
	FIELD FILE NAME		

PROFILE	SURVEYED	BY	DATE
NOTE BOOK NO.	PLOTTED		
	GRADES CHECKED		
	STRUCTURE NOTATIONS CHECKED		

DATE PLOTTED = 10/10/2019 3:53:01 PM
 PEN TABLE = C:\VDD\TCAD\CON\Plotting\ACGI_Plot.ctb
 PLOT CONFIG = N:\PROJ\00020795\01\Design\VDOT\00020795\01\10715c-01.dgn

TEMPORARY TRAFFIC SIGNING																	
	W20-1	W20-5	W2-1115(O), R2-1, R-190P, R2-1106	W21-1A	R11-1102 (CUSTOM)	R11-1102	W19-5	R11-1101	W20-3 (CUSTOM)	M6-1	R2-12- 6036	M3-2, M1-1.2(x2), M6-1	R1-1	R5-1	W11-2, W16-7P	R3-1	R10-15
STAGE I																	
STA 5+00	1																
STA 7+00		1															
STA 9+00			1														
STA 12+00				1													
STA 16+50									1								
STA 17+00					1	1									2		
STA 18+25							1							1			
STA 20+00									1								
STA 20+25								1		1							
STA 21+00														1			
STA 26+85								1									
STA 27+00														2			
STA 28+25					1	1								2			
STA 31+00	1																
KNOX AVE	1									1			1				
EB KENNEDY RAMP												1	1				1
KILBOURN AVE																1	
STAGE II																	
STA 5+00	1																
STA 7+00		1															
STA 9+00			1														
STA 12+00				1													
STA 16+00					1	1			1						2		
STA 17+75								1									
STA 18+25							1							1			
STA 20+00									1								
STA 20+25										1				1			
STA 27+75								1						2			
STA 28+25					1	1								2			
STA 29+25	1																
KNOX AVE	1									1			1				
EB KENNEDY RAMP												1	1				1
KILBOURN AVE																1	

STREET	DETOUR SIGN GROUP																					
	1	2	3	4	5	6	8	10	11L	11R	12L	12R	13	14L	14R	15L	15R	19	20L	20R	20A	21
MONTROSE AVE	1	1	2	3	3	3	3			1		1		1	1	1	1	2	1	1	3	2
CICERO AVE	1		1		2		1	3	1		1		3	1		1						
IRVING PARK RD					2			4	1		1		4		1		1					
PULAKI RD		1	1		2		1	3		1		1	2		1		1					
ELSTON AVE		1	1		1		1						1									
SIDE ROADS	1		1		13		13			1		1		6	7	6	7					
TOTAL	3	3	6	4	23	2	19	10	2	3	2	3	10	8	10	8	10	2	1	1	3	2

NOTE: REFER TO DETOUR PLAN FOR INFORMATION ON SIGN GROUPS, SEE SHEET: 19

TEMPORARY INFORMATION SIGNS	EAST ONLY*	W. MONTROSE DETOUR*	WEST MONTROSE AVE CLOSED*	ROAD WORK AHEAD EXPECT DELAYS
I-90/94	3 SIGNS AT 28.9 SQ FT	2 SIGNS AT 51.0 SQ FT	1 SIGN AT 61.2 SQ FT	4 SIGNS AT 25.7 SQ FT

*REFER TO TEMPORARY EXPRESSWAY SIGNING PLAN FOR LOCATIONS



USER NAME = untitled	DESIGNED - MLH	REVISED - 10/22/2019 MLH
PLLOT SCALE = 800.0000' / in.	CHECKED - EPS	REVISED -
PLLOT DATE = 10/10/2019	DRAWN - MLH	REVISED -
	CHECKED - 8/12/2019	REVISED -

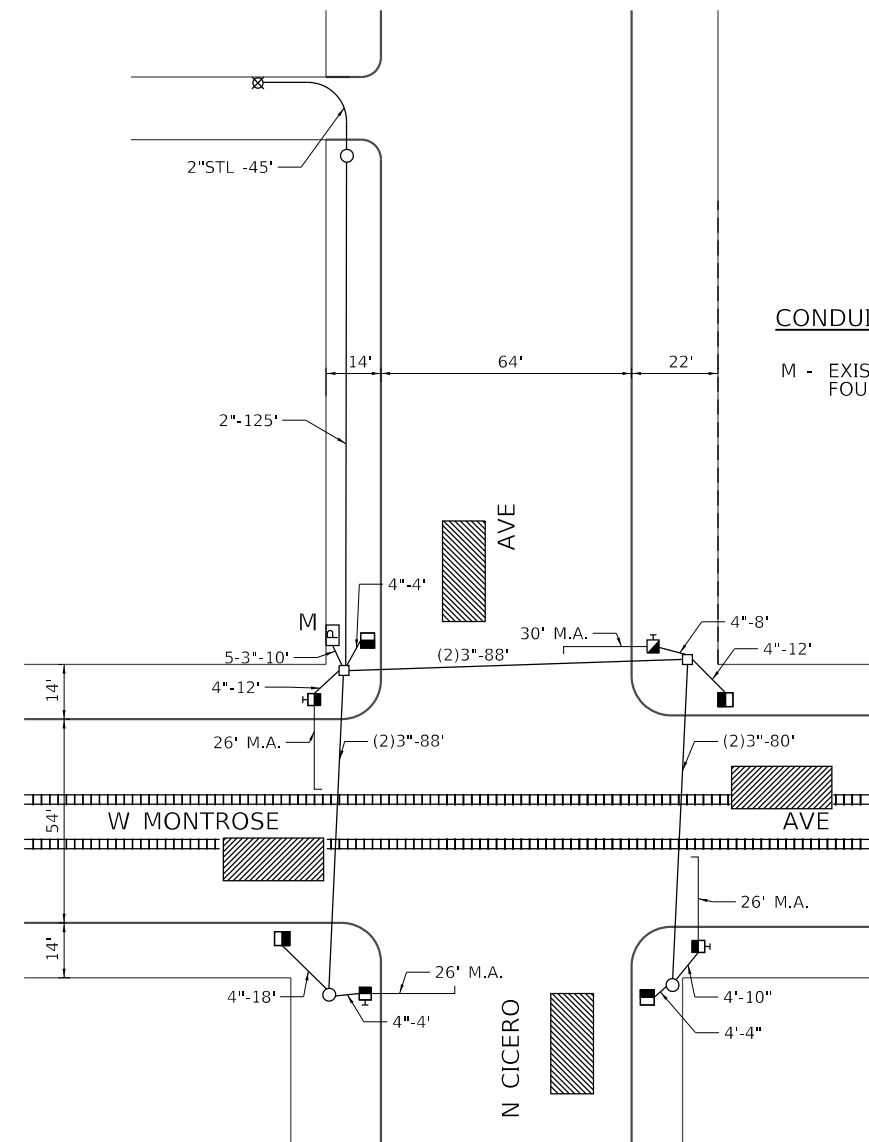
STATE OF ILLINOIS
DEPARTMENT OF TRANSPORTATION

F.A.I. 94 (INTERSTATE 94) AT MONTROSE AVENUE
MOT SCHEDULES

SCALE: N.T.S. SHEET NO. 1 OF 1 SHEETS STA. TO STA.

F.A.I. RE.	SECTION	COUNTY	TOTAL SHEETS	SHEET NO.
94	267-0101.3-B-R	COOK	120	25
CONTRACT NO. 62F95			ILLINOIS FED. AID PROJECT NHPP-XG101992	

REV. 10-24-2019



CONDUIT & FOUNDATION PLAN

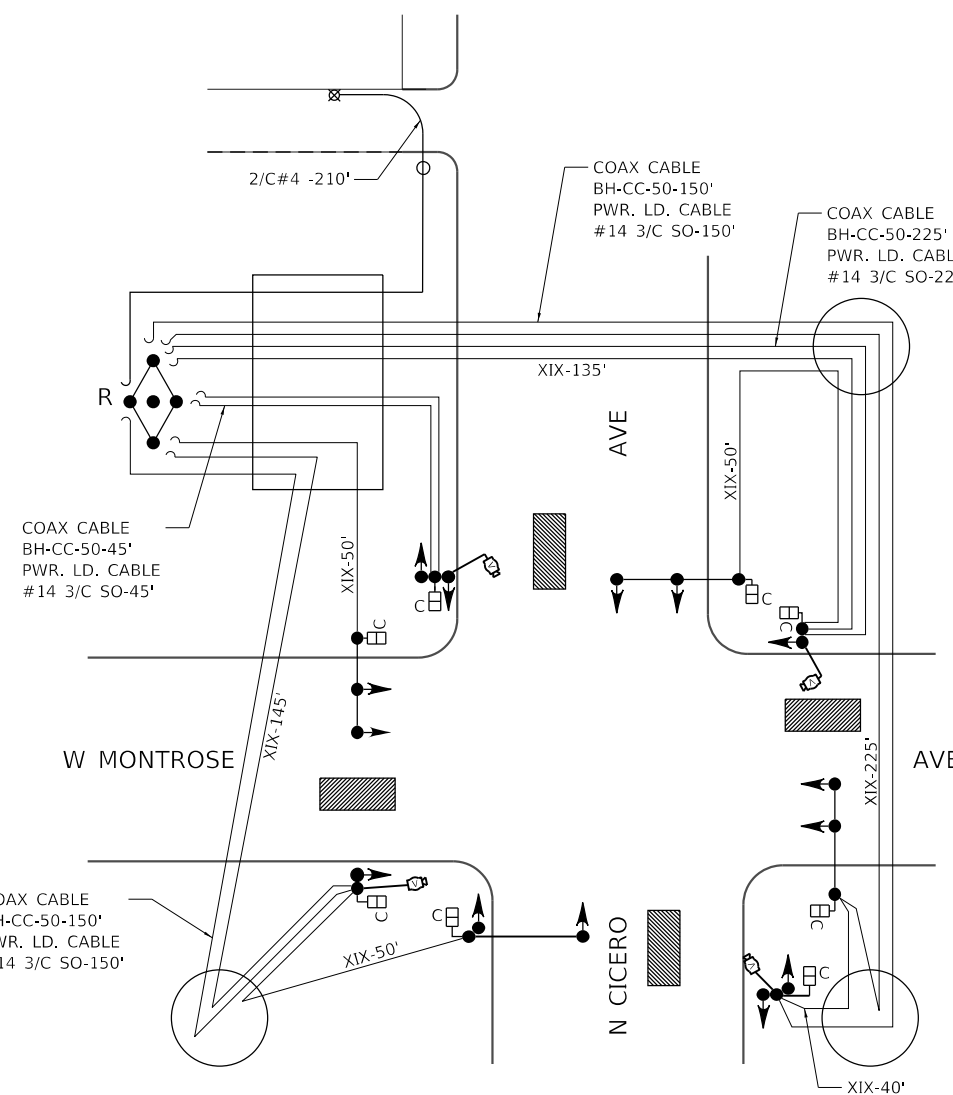
SCALE: 1" = 20'

CONDUIT & FOUNDATION PLAN NOTES

M - EXISTING TRAFFIC SIGNAL CONTROLLER FOUNDATION TO BE RETAINED

SIGNAL & CABLE PLAN NOTES

- J - INSTALL 5- SECTION TRAFFIC SIGNAL HEAD WITH YELLOW AND GREEN ARROWS ON MAST ARM POLE
- K - INSTALL 5- SECTION TRAFFIC SIGNAL HEAD WITH YELLOW AND GREEN ARROWS ON TRAFFIC POLE
- S - INSTALL TRAFFIC SIGNAL CONTROLLER, SUPER 'P' CABINET, ON EXISTING 'P' CONTROLLER FOUNDATION

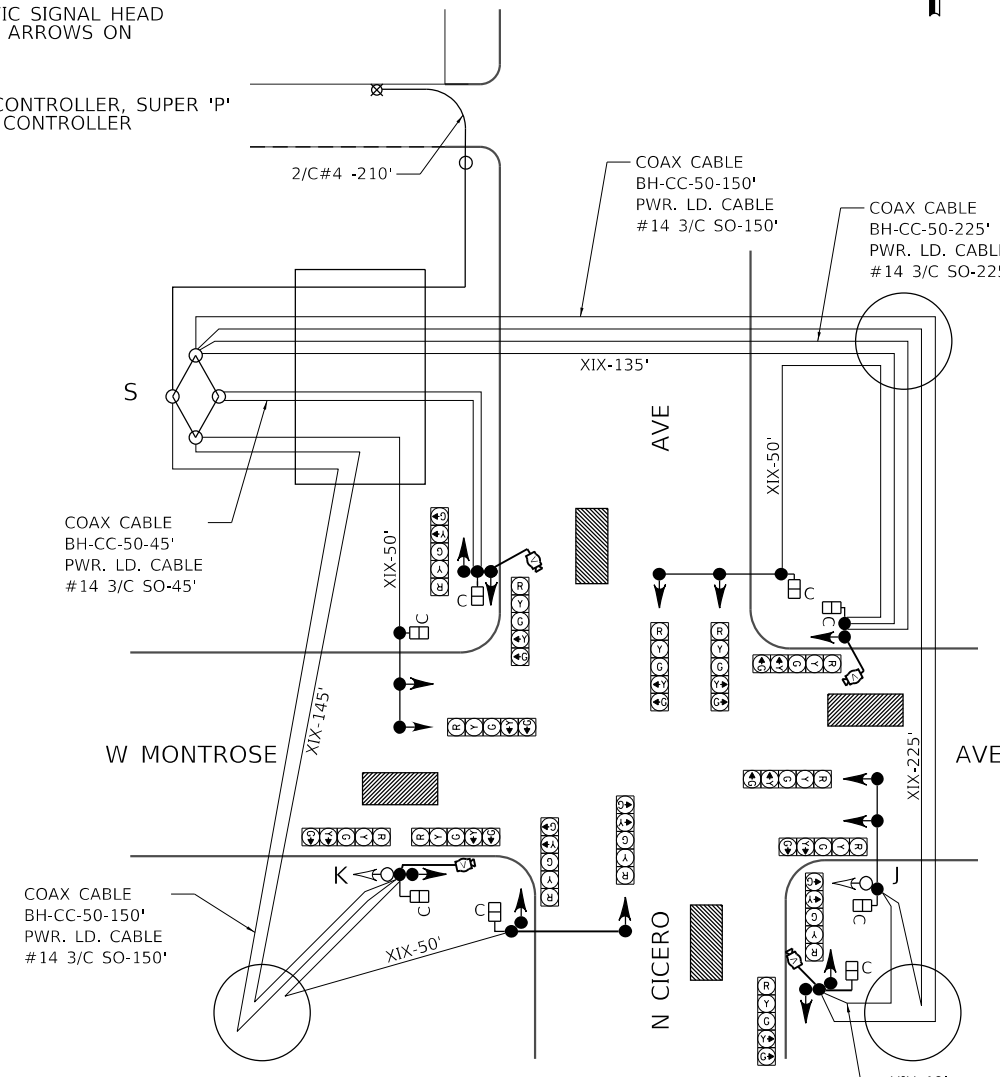


SIGNAL & CABLE REMOVAL PLAN

NOT TO SCALE

SIGNAL & CABLE REMOVAL PLAN NOTES

R - REMOVE TRAFFIC SIGNAL CONTROLLER, 'P' CABINET



SIGNAL & CABLE PLAN

NOT TO SCALE

LEGEND

- EXISTING VIDEO VEHICLE DETECTION ZONE
- VIDEO DETECTOR CAMERA
- PEDESTRIAN WALK SIGNAL WITH COUNTDOWN TIMER

DATE PLOTTED = 10/21/2019 3:22:38 PM
 PEN TABLE = N:\Standards\CAD\Bentley\Standards\DOT\Plotting\CGI-PDF.plt.ctb
 PLOT CONFIG = N:\Standards\CAD\Bentley\Standards\DOT\Plotting\CGI-PDF.plt.ctb
 FILE NAME = N:\VPROJ\10022019\1022019\1022019\1022019.dgn

ENGINEERING CONSULTANT

 8725 W Higgins Road, Suite 600 Chicago, IL 60631
 P 773.775.4009 | www.ciorba.com

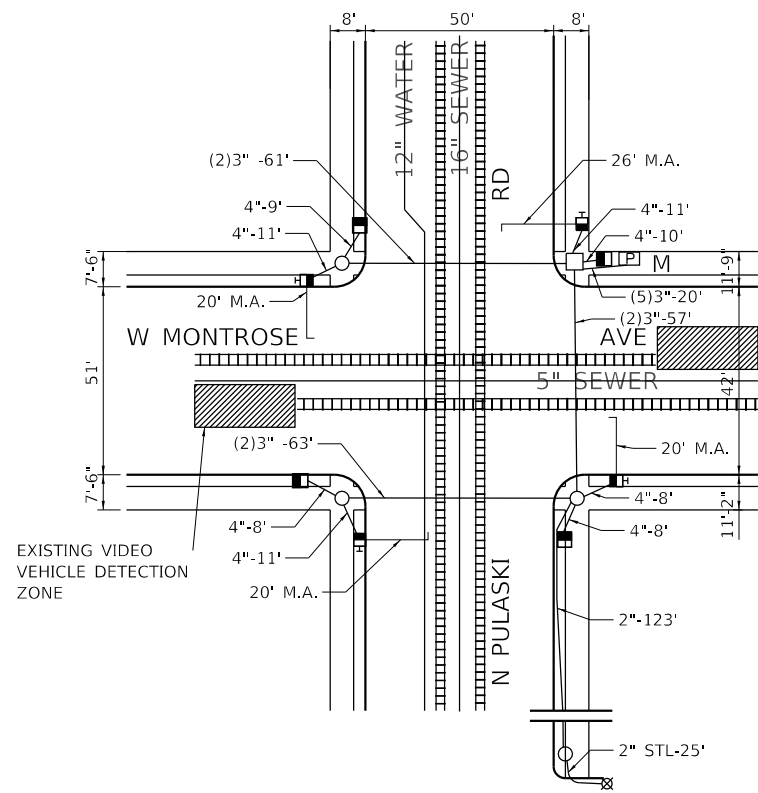
USER NAME = untitled	DESIGNED - DTJ	REVISED - 10/22/2019 JMV
PLOT SCALE = 48.9986' / in.	DRAWN - DTJ	REVISED -
PLOT DATE = 10/21/2019	CHECKED - JMV	REVISED -
	DATE - 8/12/2019	REVISED -

**STATE OF ILLINOIS
 DEPARTMENT OF TRANSPORTATION**

**F.A.I. 94 (INTERSTATE 94) AT MONTROSE AVENUE
 TRAFFIC CONTROL SIGNALS
 NORTH CICERO AVENUE AND WEST MONTROSE AVENUE**
 SCALE: N.T.S. SHEET NO. OF SHEETS STA. TO STA.

DATE		REVISION	
SUPERSEDES DWG *12823		DATED 3/28/88	
TRAFFIC CONTROL SIGNALS			
NORTH CICERO AVENUE AND WEST MONTROSE AVENUE			
CITY OF CHICAGO DEPARTMENT OF TRANSPORTATION DIVISION OF ENGINEERING			
DRAFTSMAN/ENGINEER : M. STANGEL		DWG. NO.	
SUP. ENGINEER/PM : J. VONDRA		12823	
PROFESSIONAL ENGINEER : J. VONDRA			
ENGINEER OF ELECTRICITY:			
DEPUTY COMMISSIONER:			
SIZE: 22" 36"	SCALE: AS NOTED	DATE: 10/21/2019	
F.A.I. RTE. 94	SECTION 267-0101.3-B-R	COUNTY COOK	TOTAL SHEETS 120 SHEET NO. 30A
		CONTRACT NO. 62F95	
ILLINOIS FED. AID PROJECT NHPP-XG101992			

SHEET ADDED 10-24-2019



CONDUIT & FOUNDATION PLAN

SCALE: 1" = 20'

CONDUIT & FOUNDATION PLAN NOTES

M - EXISTING TRAFFIC SIGNAL CONTROLLER FOUNDATION TO BE RETAINED

SIGNAL & CABLE REMOVAL PLAN NOTES

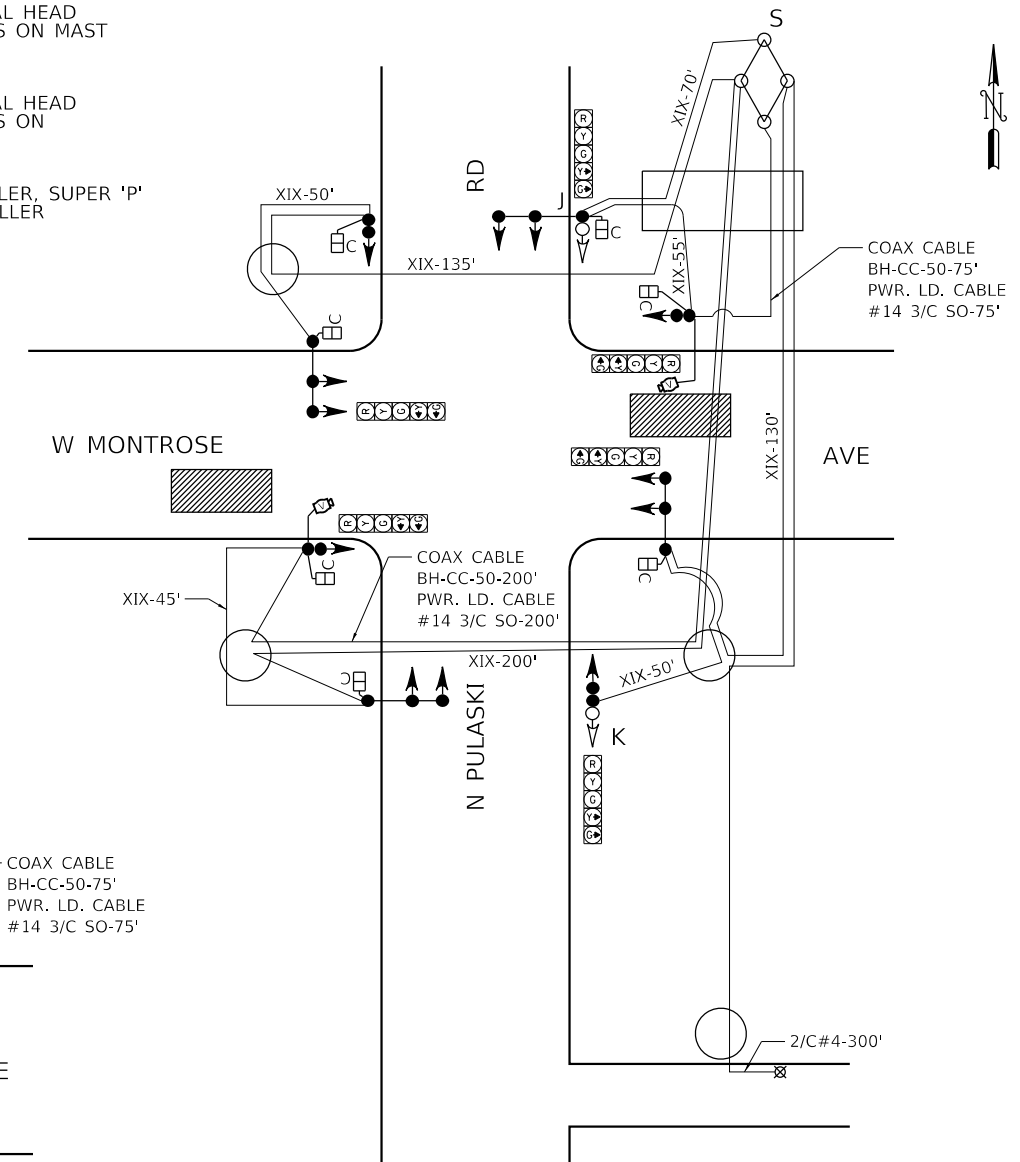
R - REMOVE TRAFFIC SIGNAL CONTROLLER, 'P' CABINET

SIGNAL & CABLE REMOVAL PLAN

NOT TO SCALE

SIGNAL & CABLE PLAN NOTES

- J - INSTALL 5- SECTION TRAFFIC SIGNAL HEAD WITH YELLOW AND GREEN ARROWS ON MAST ARM POLE
- K - INSTALL 5- SECTION TRAFFIC SIGNAL HEAD WITH YELLOW AND GREEN ARROWS ON TRAFFIC POLE
- S - INSTALL TRAFFIC SIGNAL CONTROLLER, SUPER 'P' CABINET, ON EXISTING 'P' CONTROLLER FOUNDATION



SIGNAL & CABLE PLAN

NOT TO SCALE

LEGEND

EXISTING VIDEO VEHICLE DETECTION ZONE

VIDEO DETECTOR CAMERA

PEDESTRIAN WALK SIGNAL WITH COUNTDOWN TIMER

DATE		REVISION	
SUPERSEDES DWG #12414		DATED 10-30-2008	
TRAFFIC CONTROL SIGNALS			
NORTH PULASKI ROAD AND WEST MONTROSE AVENUE			
CITY OF CHICAGO DEPARTMENT OF TRANSPORTATION DIVISION OF ENGINEERING			
DRAFTSMAN/ENGINEER : M. STANGEL		DWG. NO.	
SUP. ENGINEER/PM : O. LETAMENDI		12414	
PROFESSIONAL ENGINEER : J. VONDRA			
ENGINEER OF ELECTRICITY:			
DEPUTY COMMISSIONER:			
SIZE: 22" 36"	SCALE: AS NOTED	DATE: 10/09/2019	
F.A.I. RTE. 94	SECTION 267-0101.3-B-R	COUNTY COOK	TOTAL SHEETS 120
SCALE: N.T.S.		SHEET NO. OF SHEETS STA. TO STA.	
STATE OF ILLINOIS DEPARTMENT OF TRANSPORTATION		F.A.I. 94 (INTERSTATE 94) AT MONTROSE AVENUE TRAFFIC CONTROL SIGNALS NORTH PULASKI ROAD AND WEST MONTROSE AVENUE	
CONTRACT NO. 62F95		ILLINOIS FED. AID PROJECT NHPP-XG101992	

SHEET ADDED 1-24-2019

DATE PLOTTED = 10/21/2019 3:23:36 PM
 PEN TABLE = N:\Standards\CAD\Bentley\Standards\DOT\Plotting\CGI+PDF+PDF.plt.ctb
 PLOT CONFIG = N:\VPROJ\00220755.dwg\Design\Signals\00220755.dwg\15381.ctb
 FILE NAME =

ENGINEERING CONSULTANT

 8725 W Higgins Road, Suite 600 Chicago, IL 60631
 P 773.775.4009 | www.ciorba.com

USER NAME = untitled
 PLOT SCALE = 48.9986' / in.
 PLOT DATE = 10/21/2019

DESIGNED - DTJ
 DRAWN - DTJ
 CHECKED - JMV
 DATE - 8/12/2019

REVISED - 10/22/2019 JMV
 REVISED -
 REVISED -
 REVISED -

STATE OF ILLINOIS
 DEPARTMENT OF TRANSPORTATION

F.A.I. 94 (INTERSTATE 94) AT MONTROSE AVENUE
 TRAFFIC CONTROL SIGNALS
 NORTH PULASKI ROAD AND WEST MONTROSE AVENUE
 SCALE: N.T.S. SHEET NO. OF SHEETS STA. TO STA.

F.A.I. RTE. 94 SECTION 267-0101.3-B-R COUNTY COOK TOTAL SHEETS 120 SHEET NO. 30B CONTRACT NO. 62F95 ILLINOIS FED. AID PROJECT NHPP-XG101992

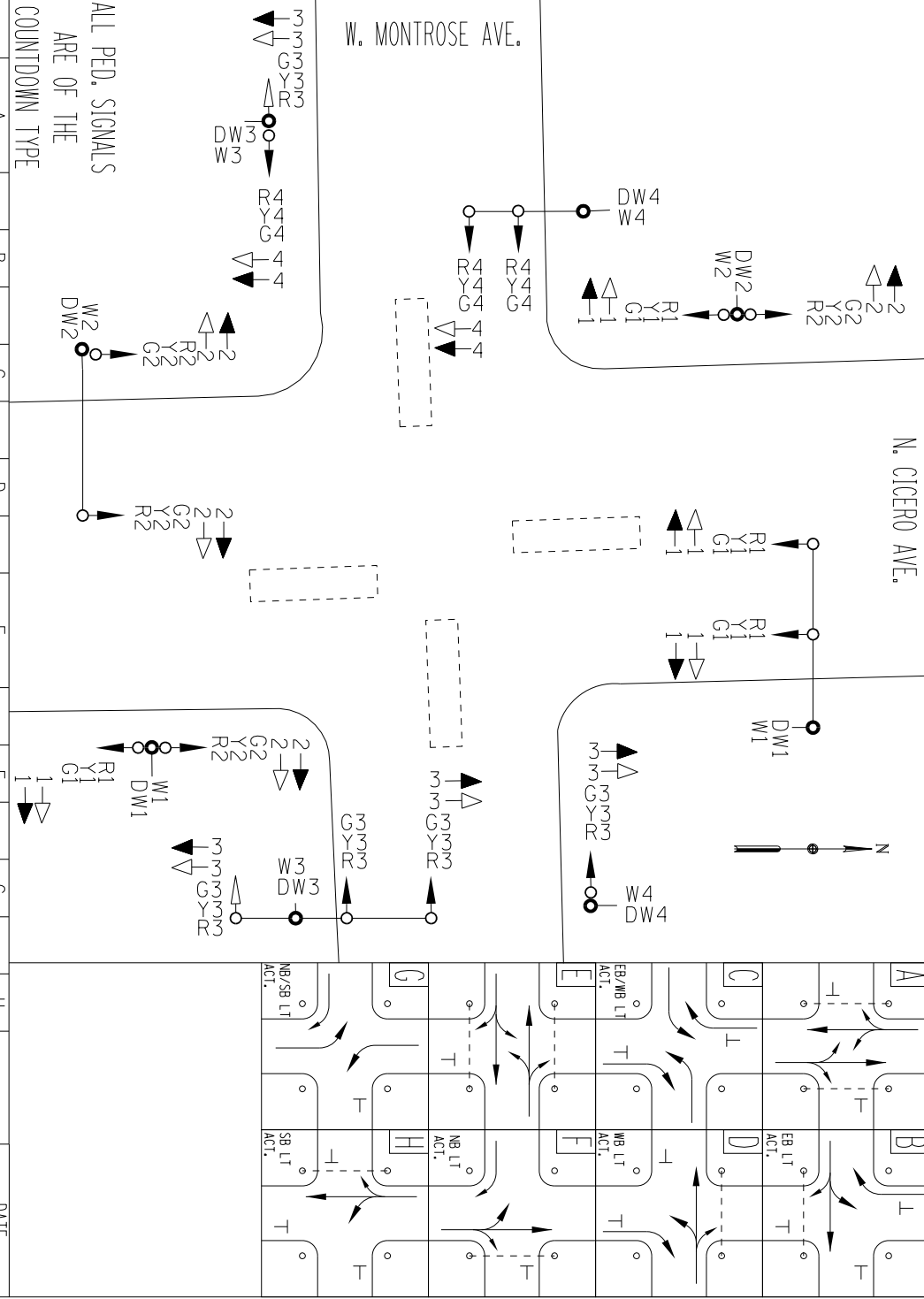
DEO. Drwg. No. 12823

DRAWN: MJS
 DATE: 10/08/2019
 CHECKED: JMV
 DATE: 10/08/2019
 CONSULTANT: Ciorba Group

MONROSE BRIDGE DETOUR TIMING
 CITY OF CHICAGO
 DEPARTMENT OF TRANSPORTATION
 TRAFFIC SIGNAL TIMING SCHEDULE
 N. CICERO AVENUE AND W. MONROSE AVENUE

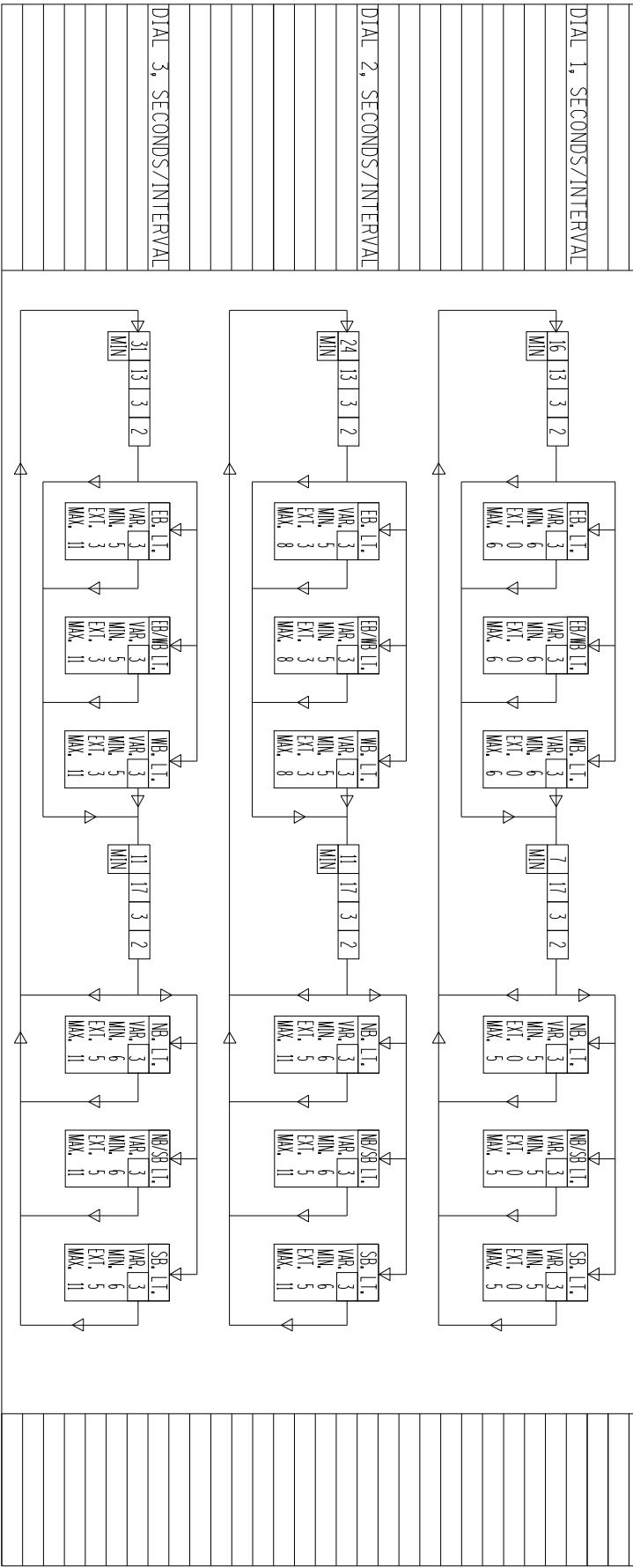
APPROVED: _____
 TRAFFIC ENGINEER
 4400 N. / 4800 W.
 PAGE 1 OF 1
 11" X 17"

Dial:	Offset:	Times Of Operation:
85	0"	ALL OTHER TIMES
100	33"	6:00 A.M. TO 12:00 P.M., MON. - FRI.
110	33"	10:00 A.M. TO 06:00 P.M., SAT.
4	22"	12:00 P.M. TO 8:15 P.M., MON. - FRI.



ALL PED. SIGNALS ARE OF THE COUNTDOWN TYPE

Signal	Phase	Interval	1	2	3	4	5	6	7	8	9	10	11	12	13	14	15	16	17	18	19	20
CICERO AVE. (NB.)	G1	Y1																				
"	R1	R1																				
"	L1.GA.	L1																				
"	L1.YA.	L1																				
"	R1.GA.	R1																				
"	R1.YA.	R1																				
CICERO AVE. (SB.)	G2	Y2																				
"	R2	R2																				
"	L2.GA.	L2																				
"	L2.YA.	L2																				
"	R2.GA.	R2																				
"	R2.YA.	R2																				
MONROSE AVE. (NB.)	G3	Y3																				
"	R3	R3																				
"	L3.GA.	L3																				
"	L3.YA.	L3																				
"	R3.GA.	R3																				
"	R3.YA.	R3																				
MONROSE AVE. (SB.)	G4	Y4																				
"	R4	R4																				
"	L4.GA.	L4																				
"	L4.YA.	L4																				
"	R4.GA.	R4																				
"	R4.YA.	R4																				



DATE PLOTTED: 10/21/2019 3:24:20 PM
 PEN TABLE: N:\S\Standards\CAD\Bentley\Standards\DOT\Plotting\CGI-PDF-plctc.fg
 PLOT CONFIG: N:\S\Standards\CAD\Bentley\Standards\DOT\Plotting\CGI-PDF-plctc.fg
 FILE NAME: N:\VPROJ\00220755\01\Design\10220755_01\15261.dgn

DRAWN: MJS
 DATE: 10/08/2019
 CHECKED: JMV
 DATE: 10/08/2019
 CONSULTANT: CIORBA GROUP

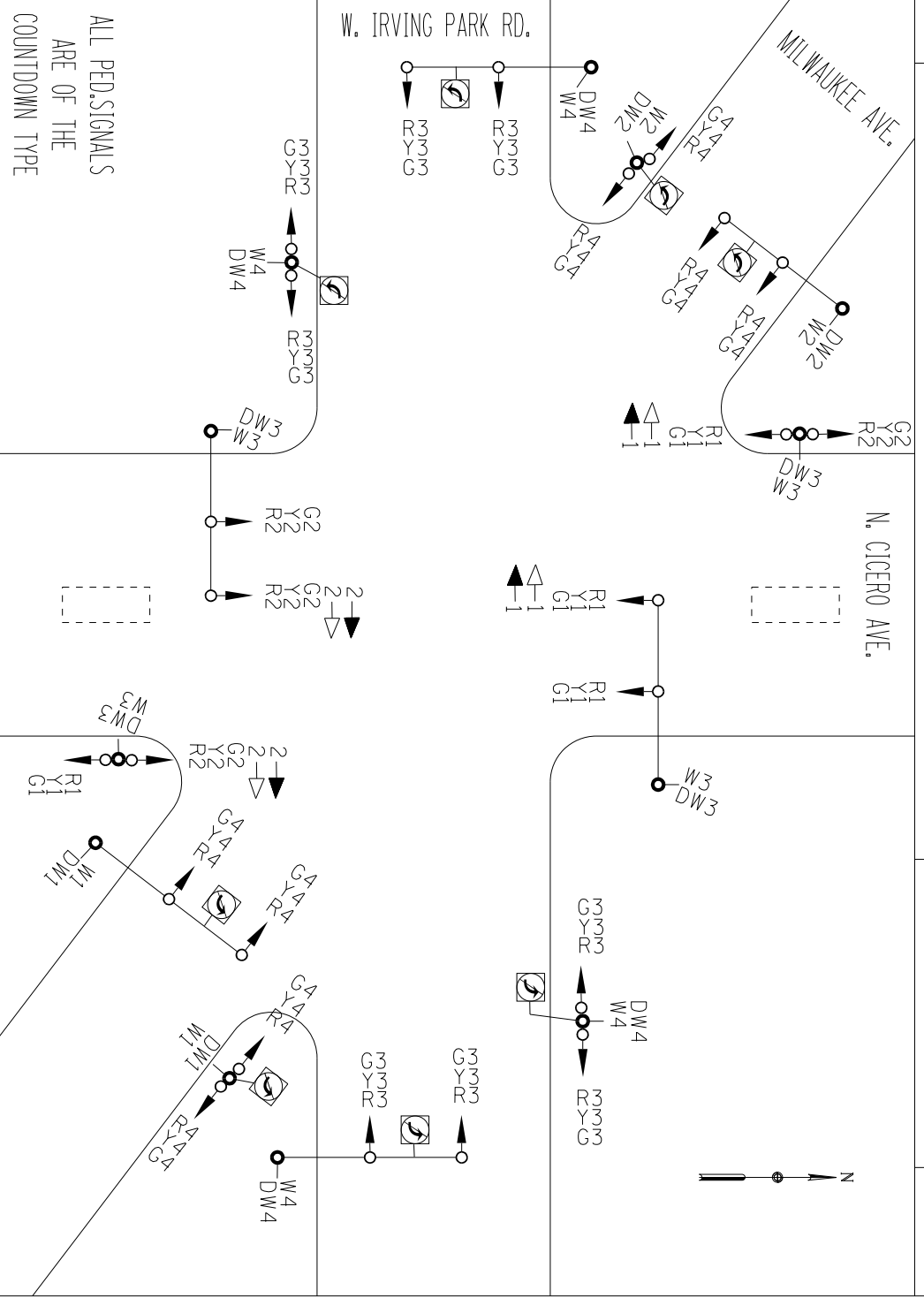
CITY OF CHICAGO
 DEPARTMENT OF TRANSPORTATION
 TRAFFIC SIGNAL TIMING SCHEDULE
 N. CICERO AVE., N. MILWAUKEE AVE. & W. IRVING PARK RD.

APPROVED: _____
 TRAFFIC ENGINEER
 4800 W. 4800 W. 4000 N.
 PAGE 1 OF 1
 11" X 17"

▲ SHEET ADDED 10-24-2019

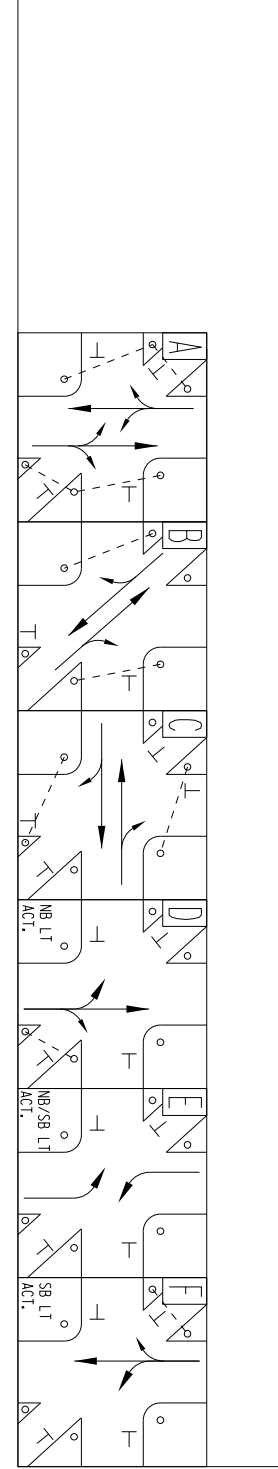
Dial:	Offset:	Times Of Operation:
130 SEC.	0"	ALL OTHER TIMES
130 SEC.	0"	7:00 A.M. TO 09:30 A.M., MON. - FRI.
130 SEC.	0"	3:00 P.M. TO 7:00 P.M., MON. - FRI.
4 SEC.		

FLASH OPERATION:
 R1, R2, R3, R4;
 W, DW, S-OFF.



SIGNAL INDICATIONS:	PHASE:	INTERVAL:
CICERO (NB)	G1	Y1
"	"	"
CICERO (NB) LT/GA	R1	Y1
"	"	"
CICERO (SB)	G2	Y2
"	"	"
CICERO (SB) LT/GA	R2	Y2
"	"	"
IRVING PARK	G3	Y3
"	"	"
MILWAUKEE	G4	Y4
"	"	"
"	"	"
WALK (SF, XWALKS)	R4	Y4
DONT WALK (NW, XWALK)	W1	Y1
WALK (NW, XWALK)	W2	Y2
DONT WALK (N/S, XWALK)	W3	Y3
WALK (N/S, XWALK)	W4	Y4
DONT WALK (E/W, XWALK)	W5	Y5
WALK (E/W, XWALK)	W6	Y6

DIAL 1, SECONDS/INTERVAL	DIAL 2, SECONDS/INTERVAL	DIAL 3, SECONDS/INTERVAL
25	28	23
13	13	13
3	3	3
2	2	2
1	0	0
27	27	27
3	3	3
4	4	4
19	14	19
18	18	18
3	3	3

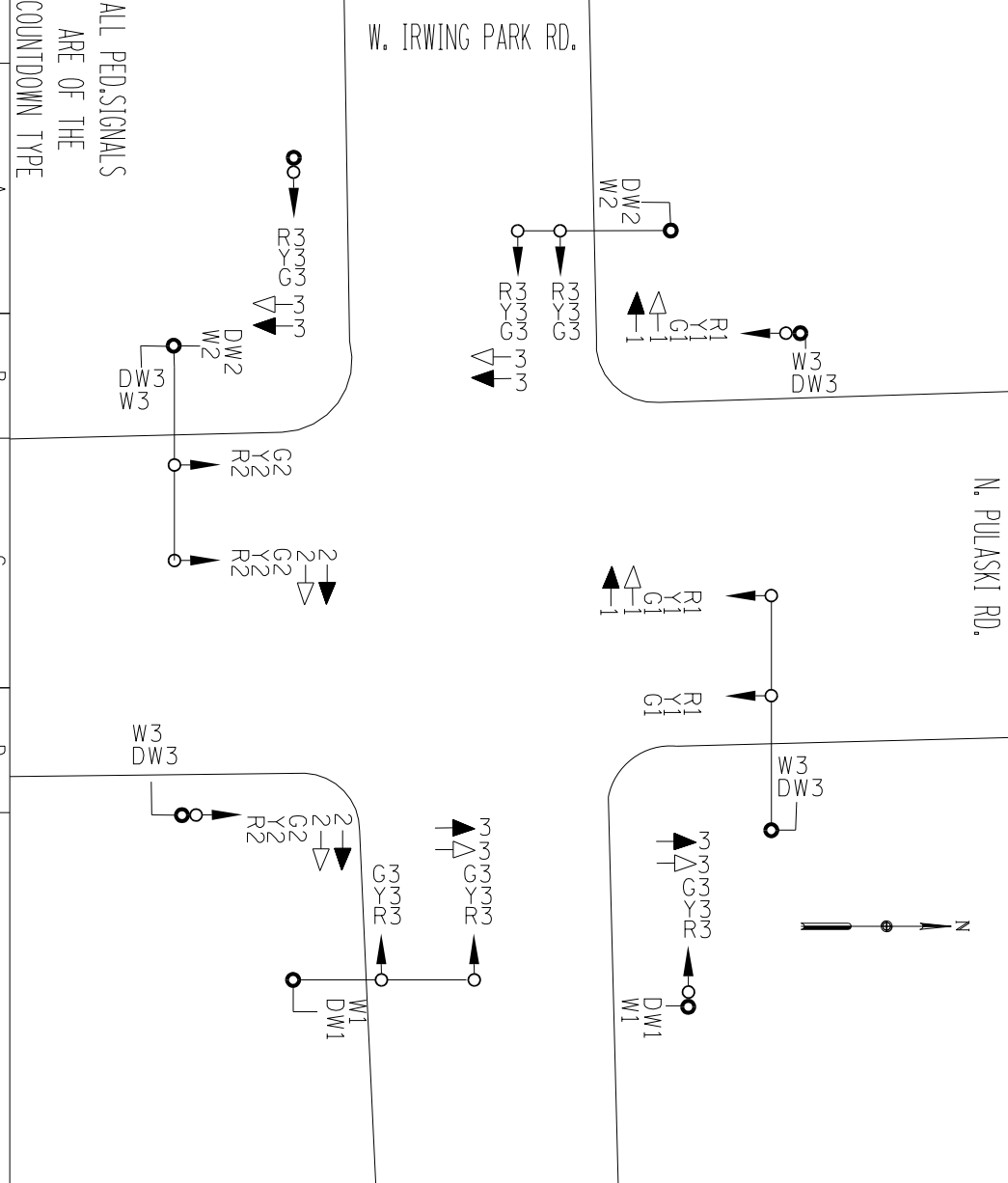


DRAWN: MJS
 DATE: 10/08/2019
 CHECKED: JMV
 DATE: 10/08/2019
 CONSULTANT: CIORBA GROUP

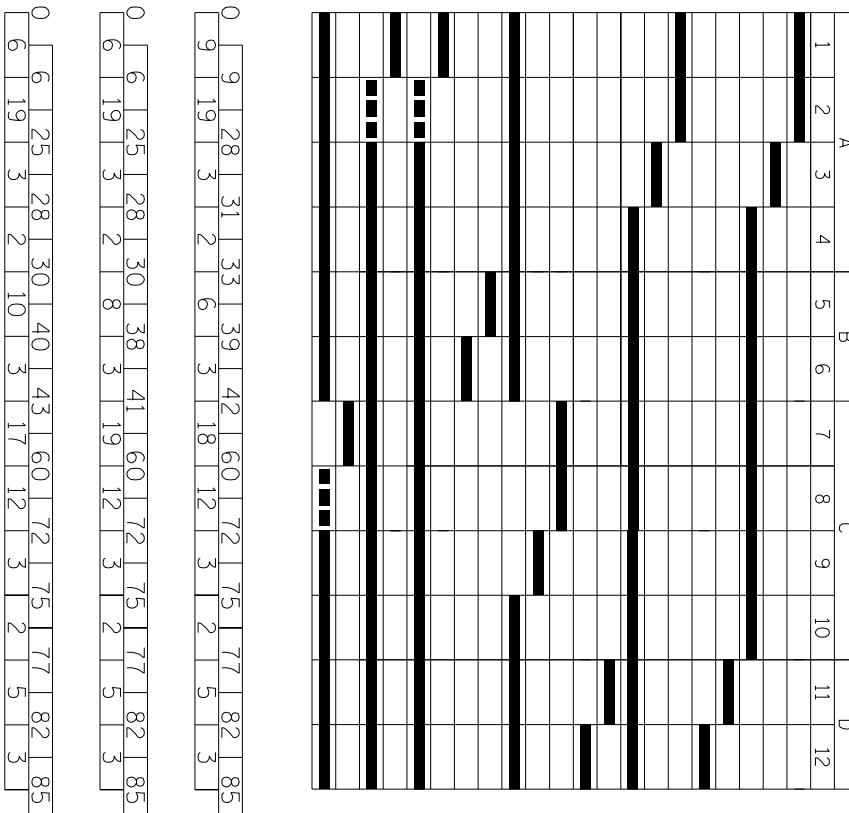
MONROSE BRIDGE DETOUR TIMING
 CITY OF CHICAGO
 DEPARTMENT OF TRANSPORTATION
 TRAFFIC SIGNAL TIMING SCHEDULE
 N. PULASKI RD. AND W. IRVING PARK RD.

4400 N. / 4000 W.
 APPROVED: _____
 TRAFFIC ENGINEER
 PAGE 1 OF 1
 11" X 17"

Dial:	Offset:	Times Of Operation:
1 85 SEC.	50"	ALL OTHER TIMES
2 85 SEC.	37"	6:00 A.M. TO 10:00 A.M., MON. - FRI.
3 85 SEC.	55"	3:00 P.M. TO 7:00 P.M., MON. - FRI.
4 SEC.		



SIGNAL INDICATIONS:	PHASE:	INTERVAL:
PULASKI RD. (NB)	G1	Y1
"	R1	"
"	"	L.T.G.A. ▲-1
"	"	L.T.A. ▲-1
PULASKI RD. (SB)	G2	Y2
"	R2	"
"	"	L.T.G.A. ▲-2
"	"	L.T.A. ▲-2
IRVING PARK RD. (EB/NB)	G3	Y3
"	R3	"
"	"	L.T.G.A. ▲-3
"	"	L.T.A. ▲-3
DONT WALK. (E. XWALK)	W1	
DONT WALK. (W. XWALK)	W2	
DONT WALK. (E. WALK)	W3	
DONT WALK. (W. WALK)	W3	



DIAL 1, ELAPSED TIME	0	9	28	31	33	39	42	60	72	75	77	82	85
SECONDS/INTERVAL	9	19	3	2	6	3	18	12	3	2	5	3	
DIAL 2, ELAPSED TIME	0	6	25	28	30	38	41	60	72	75	77	82	85
SECONDS/INTERVAL	6	19	3	2	8	3	19	12	3	2	5	3	
DIAL 3, ELAPSED TIME	0	6	25	28	30	38	41	60	72	75	77	82	85
SECONDS/INTERVAL	6	19	3	2	10	3	17	12	3	2	5	3	

▲ SHEET ADDED 10-24-2019

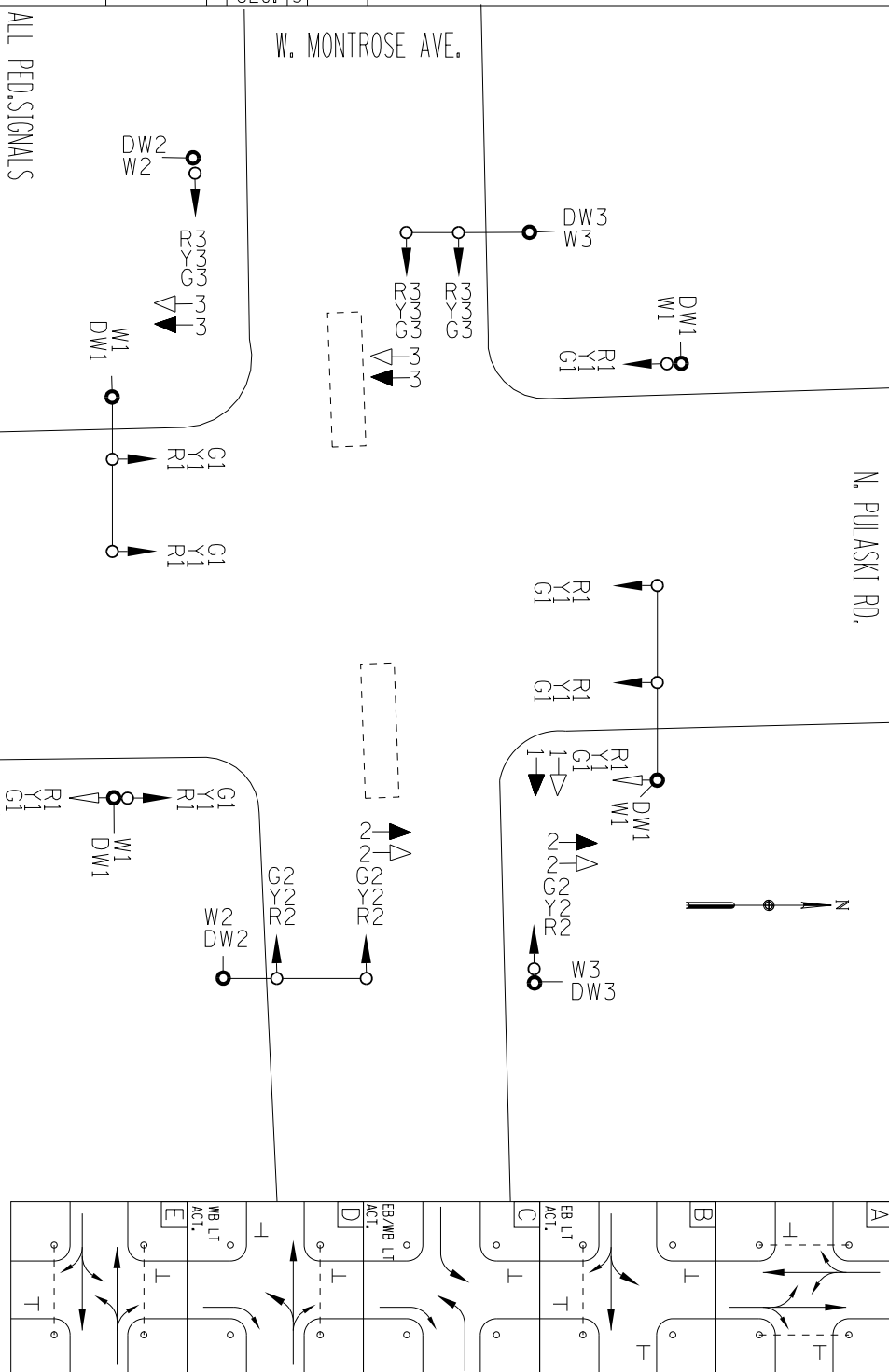
DATE PLOTTED: 10/21/2019 3:34:01 PM
 PEN TABLE: 00207501.tbl
 PLOT CONFIG: N:\Standards\CAD\Bentley\Standards\DOT\Plotting\CGI-PDF-plctcf
 FILE NAME: N:\VPOU\00207501\Design\Signal\00207501\15861.dgn

DRAWN: MJS
 DATE: 10/08/2019
 CHECKED: JMV
 DATE: 10/08/2019
 CONSULTANT: CIORBA GROUP

MONROSE BRIDGE DETOUR TIMING
 CITY OF CHICAGO
 DEPARTMENT OF TRANSPORTATION
 TRAFFIC SIGNAL TIMING SCHEDULE
 N. PULASKI RD. AND W. MONROSE AVE.

4400 N. / 4000 W.
 APPROVED: _____
 TRAFFIC ENGINEER
 PAGE 1 OF 1
 11" X 17"

Dial:	Offset:	Times Of Operation:
85	11"	ALL OTHER TIMES
85	12"	6:00 A.M. TO 10:00 A.M., MON. - FRI.
85	16"	3:00 P.M. TO 7:00 P.M., MON. - FRI.
4		



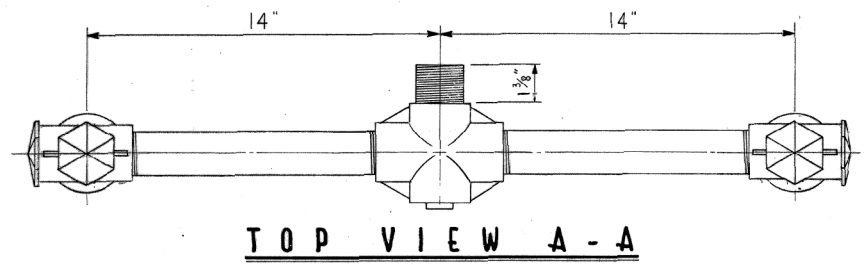
ALL PED SIGNALS
 ARE OF THE
 COUNTDOWN TYPE

SIGNAL INDICATIONS:	PHASE:	INTERVAL:	1	2	3	4	5	6	7	8	9	10	11	12	13	14
PULASKI (NB)	G1	Y1														
"	"	Y1														
"	"	R1														
PULASKI (SB)	G1	Y1														
"	"	Y1														
"	"	R1														
MONROSE (EB)	G2	Y2														
"	"	Y2														
"	"	R2														
MONROSE (WB)	G3	Y3														
"	"	Y3														
"	"	R3														
WALK (NB/SB)	W1	W1														
DONT WALK (NB/SB)	W1	W1														
WALK (S/WALK)	W2	W2														
DONT WALK (S/WALK)	W2	W2														
WALK (N/WALK)	W3	W3														
DONT WALK (N/WALK)	W3	W3														

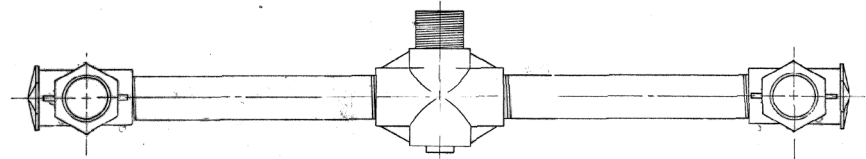
DIAL 1, SECONDS/INTERVAL	DIAL 2, SECONDS/INTERVAL	DIAL 3, SECONDS/INTERVAL
24 13 3 2	19 13 3 2	23 13 3 2
EB, LT. VAR. 3 MIN. 3 EXT. 5 MAX. 8	EB, LT. VAR. 3 MIN. 3 EXT. 5 MAX. 10	EB, LT. VAR. 3 MIN. 3 EXT. 5 MAX. 10
EB/WB, LT. VAR. 3 MIN. 3 EXT. 5 MAX. 8	EB/WB, LT. VAR. 3 MIN. 3 EXT. 5 MAX. 10	EB/WB, LT. VAR. 3 MIN. 3 EXT. 5 MAX. 10
WB, LT. VAR. 3 MIN. 3 EXT. 5 MAX. 8	WB, LT. VAR. 3 MIN. 3 EXT. 5 MAX. 10	WB, LT. VAR. 3 MIN. 3 EXT. 5 MAX. 10
14 13 3 2	17 13 3 2	13 13 3 2
MIN	MIN	MIN

△ SHEET ADDED 10-24-2019

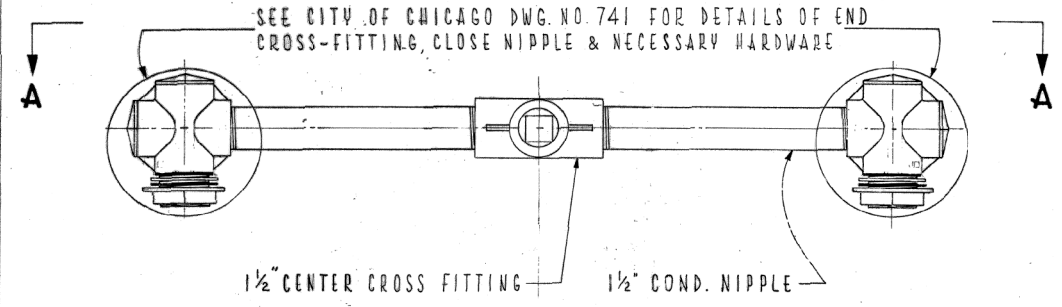
DATE PLOTTED: 10/21/2019 3:40:41 PM
 PEN TABLE: N:\Standard\CAD\Bentley\Standard\DOT\Plotting\CGI-PDF-plt.ctb
 PLOT CONFIG: N:\VPROJ\00220755\01\Design\10220755\01\15268.dgn
 FILE NAME:



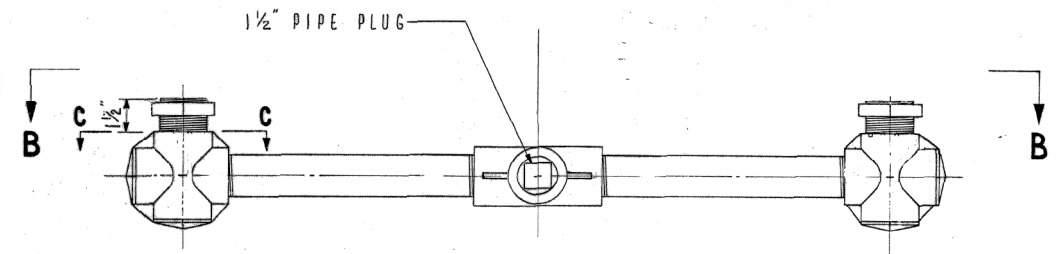
TOP VIEW A - A



TOP VIEW B - B



FRONT VIEW



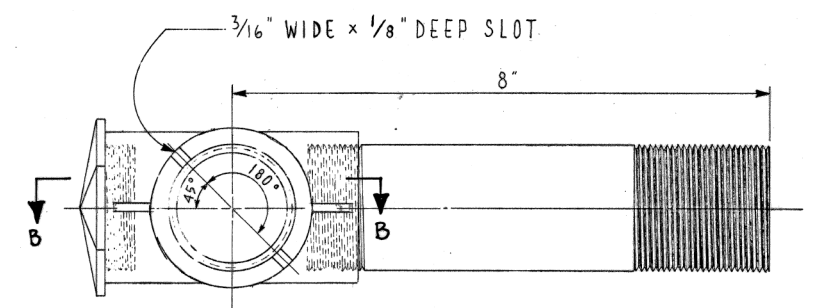
SECTION C - C

**TRAFFIC SIGNAL
UPPER & LOWER
BRACKET ARM ASSEMBLY**

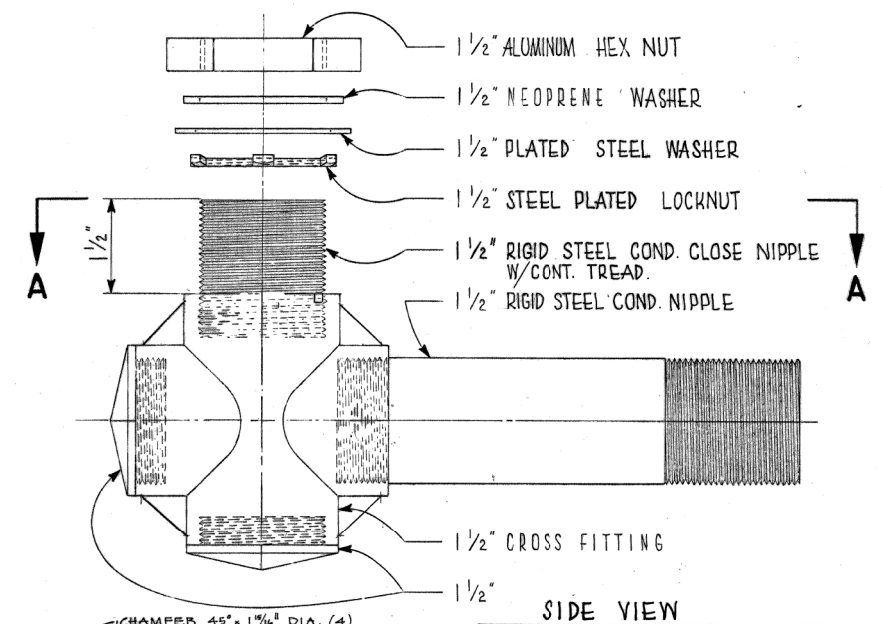
CITY OF CHICAGO
DEPT. OF STREETS & SANITATION
BUREAU OF ELECTRICITY
DIVISION OF ELEC. ENGINEERING

REVISED	DRAWN	CHECKED	ENGINEER
A 1-23-81	E. GERULIS	D.C. / M.S.	L. CUCCI
B	Suppl. by const.		
C	Thomas Widdoff		
D	John P. Buehler		
E	Charles E. Buehler		
F	SIZE: 1/2" x 1"	SCALE: AS NOTED	DATE: 8-21-74

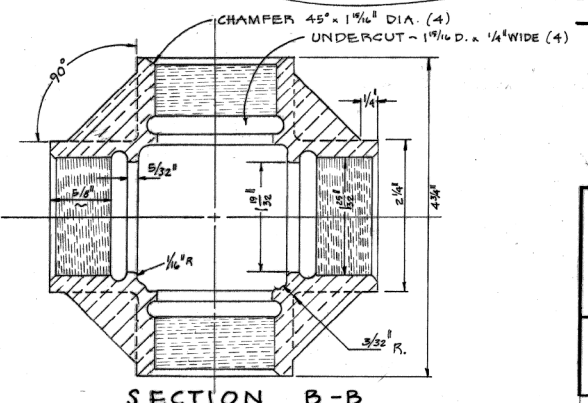
740



TOP VIEW A - A



SIDE VIEW



SECTION B - B

**TRAFFIC SIGNAL
BRACKET ARM ASSEMBLY**

CITY OF CHICAGO
DEPT. OF STREETS & SANITATION
BUREAU OF ELECTRICITY
DIVISION OF ELEC. ENGINEERING

REVISED	DRAWN	CHECKED	ENGINEER
A 1-23-81	E. GERULIS	D.C. / M.S.	L. CUCCI
B 12-6-88	Suppl. by const.		
C	Thomas Widdoff		
D	John P. Buehler		
E	Charles E. Buehler		
F	SIZE: 1/2" x 1"	SCALE: 1/2" = 1"	DATE: 8-21-74

741

△ SHEET ADDED 10-24-2019

DATE PLOTTED = 10/21/2019 3:45:09 PM
 PEN TABLE = 0020795.tbl
 PLOT CONFIG = As Standards (CAD) Bentley Standards - DOT Plotting, CCI-PDF-plctg
 FILE NAME = As VPROJ\0020795.tbl\Design\Signals\0020795.tbl\1504287.dgn

ENGINEERING CONSULTANT
CiorbaGroup
8725 W. Higgins Road, Suite 600 Chicago, IL 60631
P 773.775.4009 | www.ciorbainc.com

USER NAME = untitled
DESIGNED - DTJ
DRAWN - DTJ
PLOT SCALE = 40.0000' / in.
CHECKED - JMV
DATE - 8/12/2019
REVISOR -

DESIGNED - DTJ
DRAWN - DTJ
CHECKED - JMV
DATE - 8/12/2019
REVISOR -

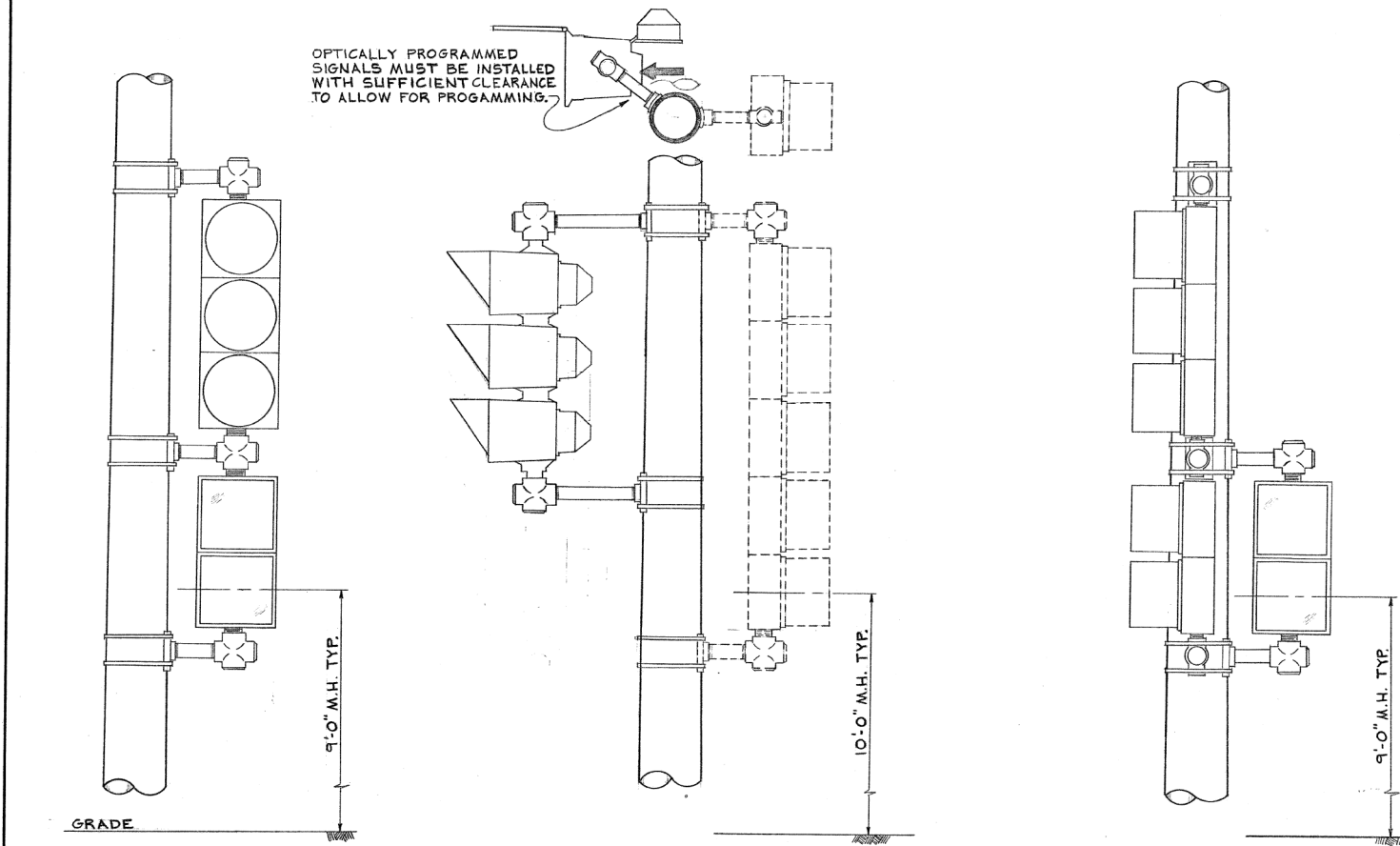
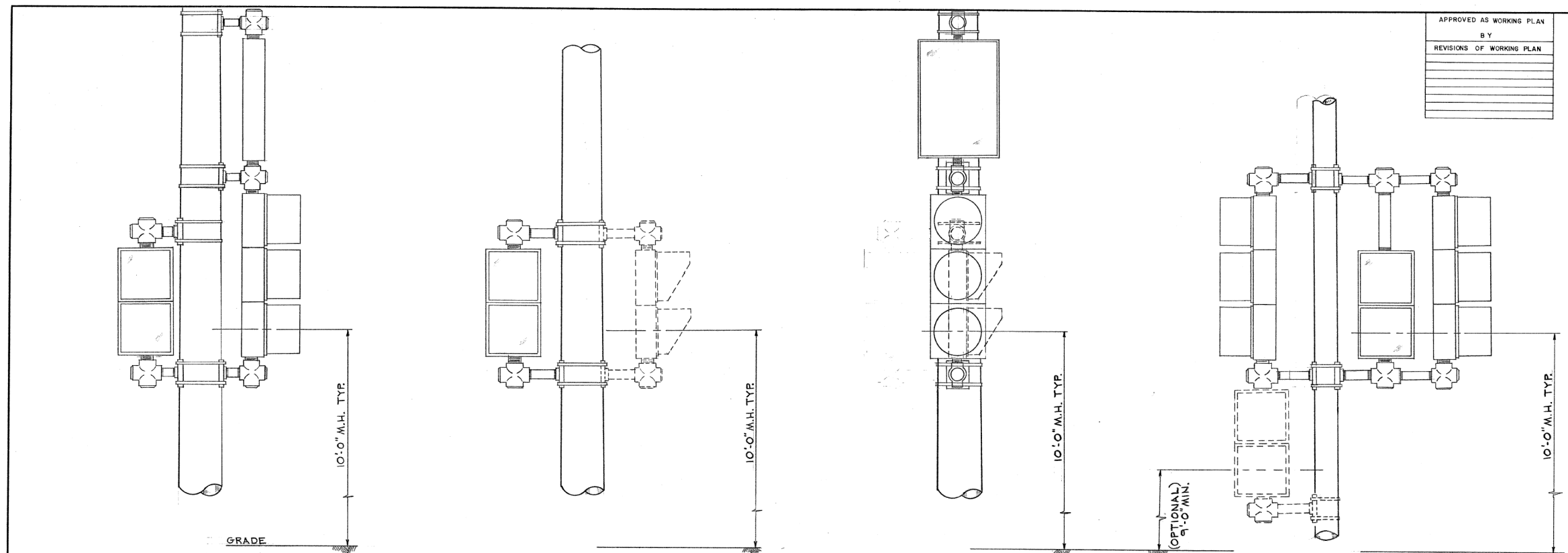
**STATE OF ILLINOIS
DEPARTMENT OF TRANSPORTATION**

**F.A.I. 94 (INTERSTATE 94) AT MONTROSE AVENUE
CDOT ELECTRICAL DETAILS**
SCALE: N.T.S. SHEET NO. OF SHEETS STA. TO STA.

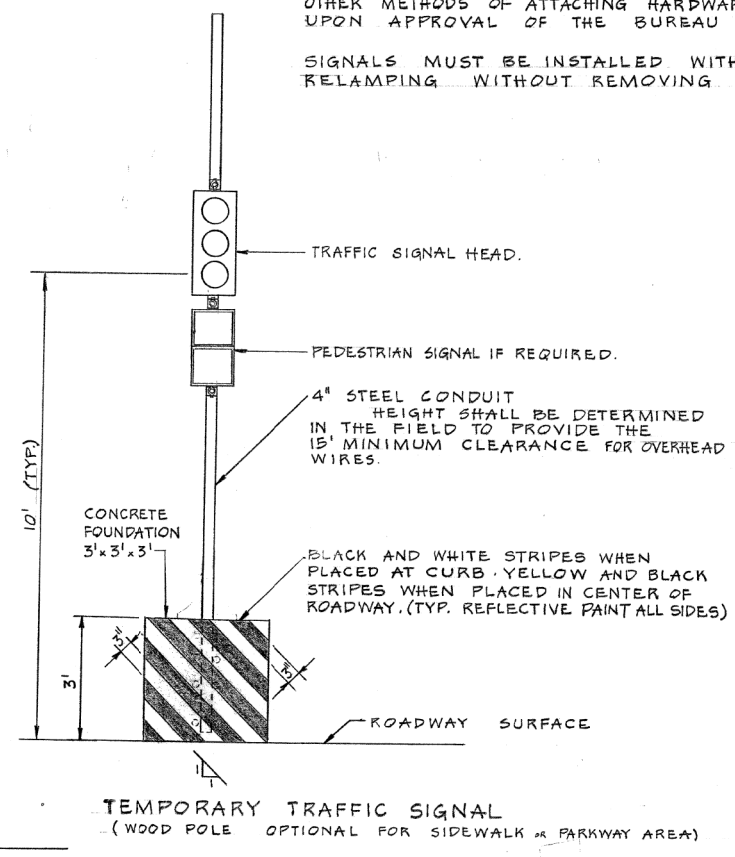
F.A.I. RTE.	SECTION	COUNTY	TOTAL SHEETS	SHEET NO.
94	267-0101.3-B-R	COOK	120	41A
CONTRACT NO. 62F95				
ILLINOIS FED. AID PROJECT NHPP-XG101992				

APPROVED AS WORKING PLAN
BY
REVISIONS OF WORKING PLAN

FEDERAL-AID ROUTE NO.	SECTION	COUNTY	TOTAL SHEETS	SHEET NO.
FHWA REG. NO.	ILLINOIS PROJECT			



NOTE:
OTHER METHODS OF ATTACHING HARDWARE FOR SIGNAL HEADS MAY BE USED UPON APPROVAL OF THE BUREAU OF ELECTRICITY.
SIGNALS MUST BE INSTALLED WITH ADEQUATE CLEARANCE FOR RELAMPING WITHOUT REMOVING VISOR OR ROTATING SIGNAL.



A 3-5-93 ADDED TEMP. SIGNAL DETAIL	
DATE	REVISION
WORK ORDER NO.	DATE
COST ALLOCATION ACCOUNT	
APPROPRIATION ACCOUNT	MATERIAL
	LABOR
TYPICAL TRAFFIC SIGNAL MOUNTING DETAILS	
CITY OF CHICAGO DEPT. OF STREETS AND SANITATION BUREAU OF ELECTRICITY DIVISION OF ELECTRICAL ENGINEERING	
DRAFTSMAN: W. TROMPKA	CHIEF DRAFTSMAN: R. J. S.
SUPERVISING ENGINEER:	ELECT. DESIGN ENGR.: M. De BARTOLO
ENGINEER OF ELECTRICITY:	DWG. NO. 835
GEN. SUPT. OF ELECTRICITY:	
DEPUTY COMMISSIONER:	
SIZE: 22 36	SCALE: NONE
	DATE: 12-10-84

DATE PLOTTED = 10/21/2019 3:46:36 PM
 PEN TABLE = N:\Standards\CAD\Bentley\Standards\IL-DOT\Plotting\COI-PDF.plt.ctb
 PLOT CONFIG = N:\Standards\CAD\Bentley\Standards\IL-DOT\Plotting\COI-PDF.plt.ctb
 FILE NAME = N:\VPROJ\00220755\01\Design\100220755_01\1504e286.dgn

ENGINEERING CONSULTANT
CiorbaGroup
8725 W. Higgins Road, Suite 600 | Chicago, IL 60631
P 773.775.4009 | www.ciorba.com

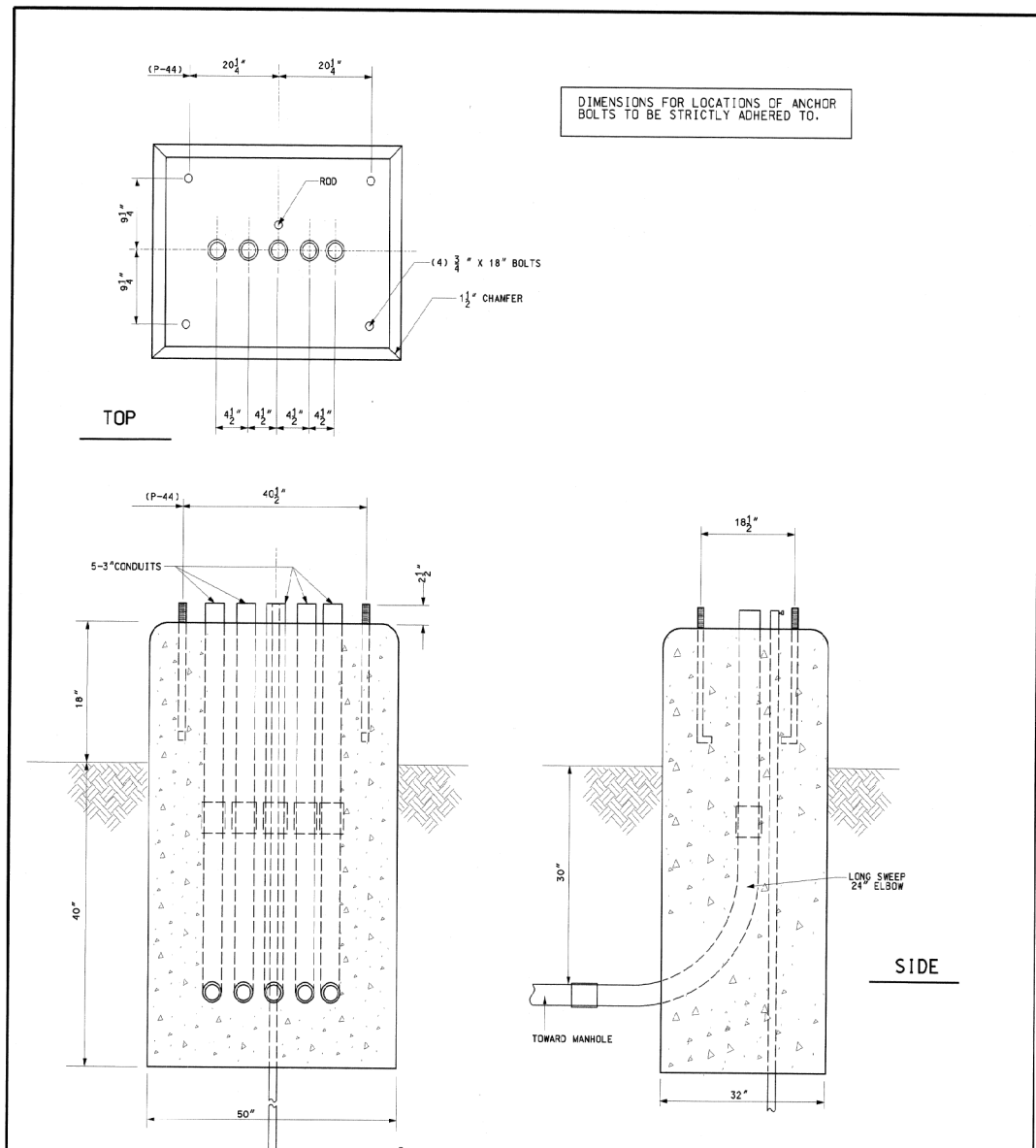
USER NAME = untitled	DESIGNED - DTJ	REVISED - 10/22/2019 JMV
PLOT SCALE = 40.0000' / in.	DRAWN - DTJ	REVISED -
PLOT DATE = 10/21/2019	CHECKED - JMV	REVISED -
	DATE - 8/12/2019	REVISED -

STATE OF ILLINOIS
DEPARTMENT OF TRANSPORTATION

F.A.I. 94 (INTERSTATE 94) AT MONTROSE AVENUE
CDOT ELECTRICAL DETAILS

F.A.I. RTE.	SECTION	COUNTY	TOTAL SHEETS	SHEET NO.
94	267-0101.3-B-R	COOK	120	41B
CONTRACT NO. 62F95				
ILLINOIS FED. AID PROJECT NHPP-XG101992				

▲ SHEET ADDED 10-24-2019



REV. A
SUPERSEDES DWG. # 888 DATED 6-23-1993

TYPE "P" FOUNDATION
FOR BASE MOUNTED
TRAFFIC SIGNAL CONTROL CABINET

CITY OF CHICAGO
DEPT. OF STREETS AND SANITATION
BUREAU OF ELECTRICITY
DIVISION OF ELECTRICAL ENGINEERING

DRAFTSMAN: O. LETAMENDI
CHIEF DRAFTSMAN: R. CARTER
ENGINEER: O. LETAMENDI
SUPERVISING ENGINEER: ELEC. DESIGN ENGR.

ENGINEER OF ELECTRICITY:
GEN'L SPT. OF ELECTRICITY:
DEPUTY COMMISSIONER:

DWG. NO. **888**

SIZE: 16" X 21" SCALE: NONE DATE: 6-19-02

<p>• 7 CONDUCTOR - TPOINT STRIP •</p> <ul style="list-style-type: none"> 7 - COMMON WHITE 6 - WHITE DLK. TR. E & W RED 5 - BLACK - SOLID " AMBER 4 - BLUE - " " GREEN 3 - RED - " N & S RED 2 - ORANGE - " " AMBER 1 - GREEN - " " GREEN 	<p>• 14 CONDUCTOR - 10 POINT STRIP •</p> <ul style="list-style-type: none"> 10 - COMMON WHITE 9 - RED WHITE TRACER 8 - ORANGE " " 7 - GREEN " " 6 - RED BLACK TRACER 5 - ORANGE " " 4 - GREEN " " 3 - RED - SOLID 2 - ORANGE - SOLID 1 - GREEN - SOLID <p>GREEN BLUE TRACER } ORANGE " } SPliced & TAPed RED " } BLACK - SOLID }</p>	<p>• 22 CONDUCTOR - CODE • 1/2 CODE - OMIT #19 - #21 - #22</p> <ul style="list-style-type: none"> 1 - WH RED/BLACK TR. COMMON 2 - WH RED/GREEN TR. COMMON (SPARE) 3 - R BLACK TR. NO. BOUND 4 - A " " " 5 - G " " " 6 - R SOLIDS SO. BOUND 7 - A " " " 8 - G " " " 9 - BK " NEON OR ARROW 10 - R BLUE TR. EAST BOUND 11 - A " " " 12 - G " " " 13 - R WHITE TR. WEST BOUND 14 - A " " " 15 - G " " " 16 - BL SOLID - SPECIAL 17 - BL AMBER TR - " 18 - BL WHITE TR - " 19 - WH RED TR - " 20 - WH SOLID - " 21 - WH BLACK TR - " 22 - BK WHITE TR - " 																																
<p>• 10 CONDUCTOR - 7 POINT STRIP •</p> <ul style="list-style-type: none"> 7 - COMMON - WHITE 6 - RED DLK. TR. E & W RED 5 - ORANGE DLK. TR. " AMBER 4 - GREEN DLK. TR. " GREEN 3 - RED - SOLID N & S RED 2 - ORANGE - " " AMBER 1 - GREEN - " " GREEN <p>SOLID BLUE } SOLID BLACK } SPliced & TAPed BLUE DLK. TR. }</p>	<p>• 14 CONDUCTOR - 14 POINT STRIP •</p> <ul style="list-style-type: none"> 14 - COMMON WHITE 13 - BLACK 12 - RED - BLUE TRACER 11 - ORANGE - " " 10 - GREEN - " " 9 - RED - WHITE TRACER 8 - ORANGE - " " 7 - GREEN - " " 6 - RED - BLACK TRACER 5 - ORANGE - " " 4 - GREEN - " " 3 - SOLID RED 2 - SOLID ORANGE 1 - SOLID GREEN 	<p>• SPLIT CORNER •</p> <p>TRAFFIC CONTROL SIGNALS STRIP WIRING LAYOUT</p> <table border="1"> <tr> <th>REVISED</th> <th colspan="3">CITY OF CHICAGO DEPT. OF STREETS AND SANITATION DIVISION OF ELECTRICAL OPERATION</th> </tr> <tr> <td>A 5-4-61</td> <td>DRAWN</td> <td>CHECKED</td> <td>DESIGNED</td> </tr> <tr> <td>B 11-10-64</td> <td>H.E.B.</td> <td>H.A. Shuman</td> <td>H.P. Kelly</td> </tr> <tr> <td>C</td> <td colspan="2">J.H. Anderson</td> <td>DEG. NO.</td> </tr> <tr> <td>D</td> <td colspan="2">SUPERINTENDENT</td> <td>12268-A</td> </tr> <tr> <td>E</td> <td colspan="2">COMMISSIONER</td> <td></td> </tr> <tr> <td>F</td> <td colspan="2">DATE</td> <td>11-8-56</td> </tr> <tr> <td>G</td> <td>SIZE 16" X 21"</td> <td>COMMISSIONER</td> <td>DATE 11-8-56</td> </tr> </table>	REVISED	CITY OF CHICAGO DEPT. OF STREETS AND SANITATION DIVISION OF ELECTRICAL OPERATION			A 5-4-61	DRAWN	CHECKED	DESIGNED	B 11-10-64	H.E.B.	H.A. Shuman	H.P. Kelly	C	J.H. Anderson		DEG. NO.	D	SUPERINTENDENT		12268-A	E	COMMISSIONER			F	DATE		11-8-56	G	SIZE 16" X 21"	COMMISSIONER	DATE 11-8-56
REVISED	CITY OF CHICAGO DEPT. OF STREETS AND SANITATION DIVISION OF ELECTRICAL OPERATION																																	
A 5-4-61	DRAWN	CHECKED	DESIGNED																															
B 11-10-64	H.E.B.	H.A. Shuman	H.P. Kelly																															
C	J.H. Anderson		DEG. NO.																															
D	SUPERINTENDENT		12268-A																															
E	COMMISSIONER																																	
F	DATE		11-8-56																															
G	SIZE 16" X 21"	COMMISSIONER	DATE 11-8-56																															
<p>• 10 CONDUCTOR - 10 POINT STRIP •</p> <ul style="list-style-type: none"> 10 - COMMON - WHITE 9 - BLUE DLK. TRACER # 8 - BLACK - SOLID # 7 - BLUE - SOLID # 6 - RED DLK. TRACER E & W RED 5 - ORANGE DLK. " " AMBER 4 - GREEN DLK. " " GREEN 3 - RED - SOLID N & S RED 2 - ORANGE - SOLID " AMBER 1 - GREEN - SOLID " GREEN <p>* - SOLID BLUE - GREEN LIGHT } IF USED * - SOLID BLACK - AMBER } * - BLUE BLACK TR. RED }</p>	<p>• STRAIGHT CORNER •</p> <p>NOTE: CONDUCTORS FOR WALK SIGNALS & VARIOUS MESSAGE SIGNS AT DISCRETION OF INSTALLER</p>																																	

DATE PLOTTED: 10/21/2019 3:47:27 PM
 PEN TABLE: N:\Standards\CAD\Bentley\Standards\N-DOT\Plotting\CGI-PDF-plc1c1g
 PLOT CONFIG: N:\VPROJ\00220755\01.tbl
 FILE NAME: N:\VPROJ\00220755\01\Design\10220755_01_17SideRt.dgn

ENGINEERING CONSULTANT
CiorbaGroup
8725 W. Higgins Road, Suite 600 Chicago, IL 60631
P 773.775.4009 | www.ciorba.com

USER NAME = untitled	DESIGNED - DTJ	REVISED - 10/22/2019 JMV
PLOT SCALE = 40.0000' / in.	DRAWN - DTJ	REVISED -
PLOT DATE = 10/21/2019	CHECKED - JMV	REVISED -
	DATE - 8/12/2019	REVISED -

STATE OF ILLINOIS
DEPARTMENT OF TRANSPORTATION

F.A.I. 94 (INTERSTATE 94) AT MONTROSE AVENUE
CDOT ELECTRICAL DETAILS

SCALE: N.T.S. SHEET NO. OF SHEETS STA. TO STA.

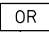

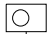

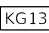
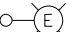
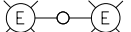
F.A.I. RTE.	SECTION	COUNTY	TOTAL SHEETS	SHEET NO.
94	267-0101.3-B-R	COOK	120	41C
CONTRACT NO. 62F95				
ILLINOIS FED. AID PROJECT NHPP-XG101992				

△ SHEET ADDED 10-24-2019

GENERAL NOTES:

1. THE ELECTRICAL WORK SHALL BE PERFORMED IN ACCORDANCE WITH THE IDOT STANDARD SPECIFICATIONS FOR ROAD AND BRIDGE CONSTRUCTION AND ASSOCIATED SUPPLEMENTAL SPECIFICATIONS AND RECURRING SPECIAL PROVISIONS (LATEST EDITION).
2. THE CONTRACTOR SHALL GIVE IN WRITING TO THE ELECTRICAL ENGINEER FOR REVIEW CONSTRUCTION STAGING FOR PROPOSED UNDERPASS LIGHTING WORK, AND OBTAIN WRITTEN APPROVAL FROM THE ELECTRICAL ENGINEER.
3. ANY ROADWAY LIGHTING MATERIALS AND/OR LIGHTING SYSTEMS SHOWN ON THE PLAN SHEETS AS "EXISTING" ARE FOR THE CONTRACTOR'S INFORMATION ONLY. THE CONTRACTOR MUST FIELD VERIFY EXISTING ROADWAY LIGHTING MATERIALS/SYSTEMS AS SPECIFIED IN THE "GENERAL ELECTRICAL REQUIREMENTS."
4. THE CONTRACTOR, AS DIRECTED BY THE ENGINEER, SHALL DISPOSE OF THE EXISTING ELECTRICAL MATERIAL. THE COST OF THIS WORK SHALL BE INCLUDED IN THE RESPECTIVE PAY ITEM.

LEGEND:

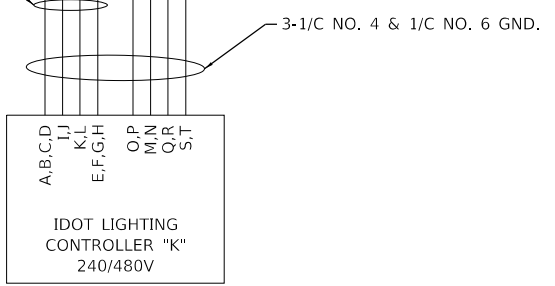
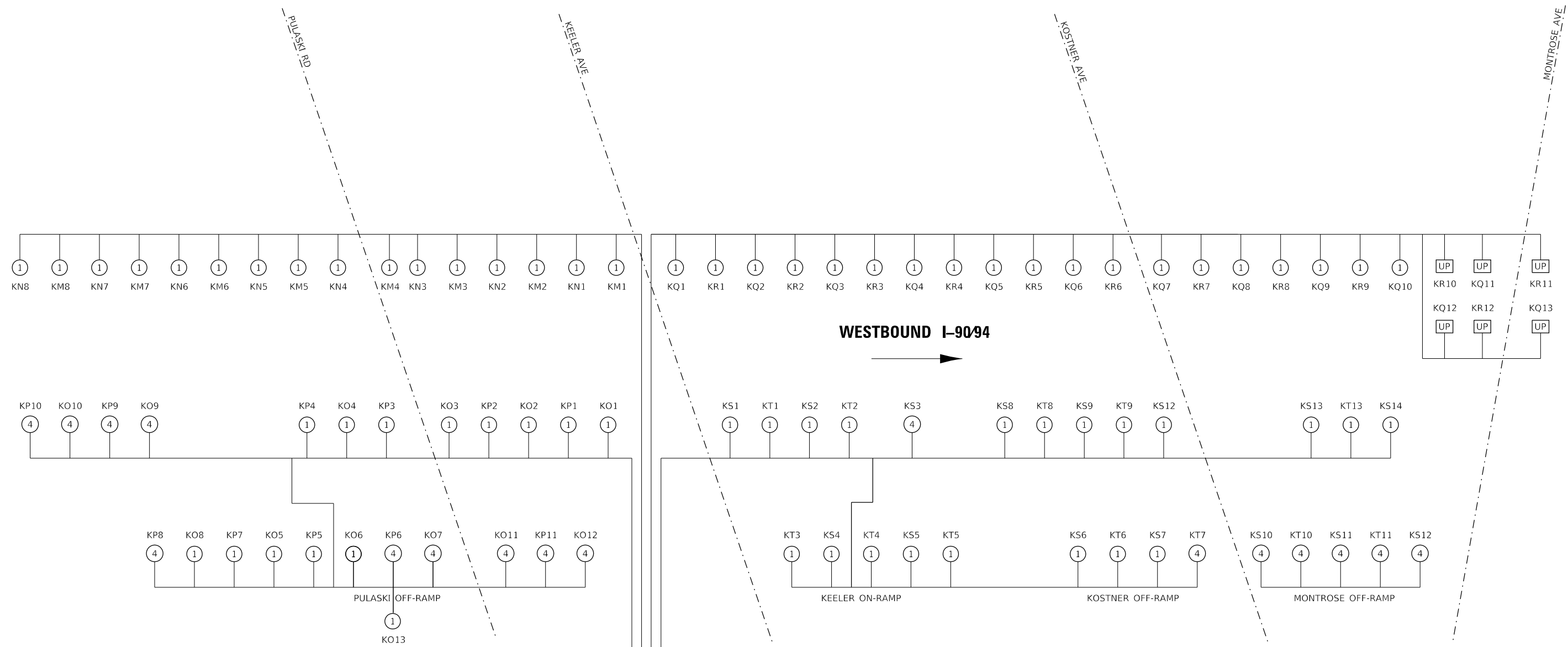
-  OR
EXISTING UNDERPASS LUMINAIRE, 55W LOW PRESSURE SODIUM VAPOR, SUSPENDED MOUNT, TO BE REMOVED.
-  JR
EXISTING JUNCTION BOX, STAINLESS STEEL, ATTACHED TO STRUCTURE, TO BE REMOVED.
-  O
LUMINAIRE, LED, UNDERPASS, SUSPENDED, OUTPUT DESIGNATION E
-  J
JUNCTION BOX, STAINLESS STEEL, ATTACHED TO STRUCTURE. SIZE AS NOTED
JB1: 18" X 12" X 8"
JB2: 12" X 10" X 6"
JB3: 6" X 6" X 4"
-  KG13
LUMINAIRE ID
-  E
EXISTING IDOT LIGHT POLE WITH SINGLE MAST ARM AND LUMINAIRE
-  E-E
EXISTING IDOT LIGHT POLE WITH DOUBLE MAST ARM AND LUMINAIRE

SCHEDULE OF QUANTITIES

DESCRIPTION	UNIT	TOTAL
CONDUIT ATTACHED TO STRUCTURE, 1" DIA., PVC COATED GALVANIZED STEEL	FOOT	1347
JUNCTION BOX, STAINLESS STEEL, ATTACHED TO STRUCTURE, 6" X 6" X 4"	EACH	17
JUNCTION BOX, STAINLESS STEEL, ATTACHED TO STRUCTURE, 12" X 10" X 6"	EACH	23
JUNCTION BOX, STAINLESS STEEL, ATTACHED TO STRUCTURE, 18" X 12" X 8"	EACH	2
ELECTRIC CABLE IN CONDUIT, 600V (XLP-TYPE USE) 1/C NO. 12	FOOT	1587
ELECTRIC CABLE IN CONDUIT, 600V (XLP-TYPE USE) 1/C NO. 10	FOOT	6348
ELECTRIC CABLE IN CONDUIT, 600V (XLP-TYPE USE) 1/C NO. 6	FOOT	226
ELECTRIC CABLE IN CONDUIT, 600V (XLP-TYPE USE) 1/C NO. 4	FOOT	678
LUMINAIRE, LED, UNDERPASS, SUSPENDED, OUTPUT DESIGNATION E	EACH	18
REMOVE ELECTRIC CABLE FROM CONDUIT	FOOT	1165
UNDERPASS LIGHTING REMOVAL	L SUM	1
PROTECTION AND MAINTENANCE OF EXISTING UNDERPASS LIGHTING (SPECIAL)	L SUM	1
MAINTENANCE OF LIGHTING SYSTEM	CAL MO	9

DATE PLOTTED = 10/10/2019 1:55:55 PM
 PEN TABLE = N:\Standards\CAD\Bentley\Standards\10-2019\Plotting\CGI-PDF.plt
 PLOT CONFIG = N:\VPROJ\0822019\0822019\Design\Lighting\0822019\Lighting\0822019.dgn
 FILE NAME =

REV. 10-24-2019



- ① EXISTING ALUMINUM POLE, 47.5 FT MT HGT
6 FT. DAVIT MAST ARM
400W M-C-III LUMINAIRE
- ② EXISTING ALUMINUM POLE, 47.5 FT MT HGT
2-8 FT. DAVIT MAST ARM
400W M-C-III LUMINAIRE
- ③ EXISTING ALUMINUM POLE, BREAKAWAY DEVICE
47.5 FT MT HGT, 15 FT. DAVIT MAST ARM
310W M-C-III LUMINAIRE
- ④ EXISTING ALUMINUM POLE, BREAKAWAY DEVICE
47.5 FT MT HGT, 15 FT. DAVIT MAST ARM
400W M-C-III LUMINAIRE
- ⑤ EXISTING ALUMINUM POLE, 47.5 FT MT HGT
8 FT. DAVIT MAST ARM
310W M-C-III LUMINAIRE
- ⑥ EXISTING ALUMINUM POLE, 47.5 FT MT HGT
2-8 FT. DAVIT MAST ARM
LUMINAIRE AS INDICATED
- SS EXISTING STAINLESS STEEL POLE, 47.5 FT MT HGT
8 FT. ELITE MAST ARM
M-C-III LUMINAIRE, WATTAGE AS NOTED
- UP PROPOSED LUMINAIRE, LED, UNDERPASS,
SUSPENDED, OUTPUT DESIGNATION E
- EXISTING SIGN STRUCTURE. SPAN OR CANTILEVER
AND NUMBER OF LUMINAIRES AS NOTED

REV. 10-24-2019

DATE PLOTTED = 10/10/2019 1:56:47 PM
 PEN TABLE = N:\Standards\CAD\Bentley\Standards\I-90\Plotting\CGI-PDF-plc.ctb
 PLOT CONFIG = N:\Standards\CAD\Bentley\Standards\I-90\Plotting\CGI-PDF-plc.ctb
 FILE NAME = N:\VPROJ\0828755201\Design\Lighting\0828755201-1\Light\2019.dgn

ENGINEERING CONSULTANT

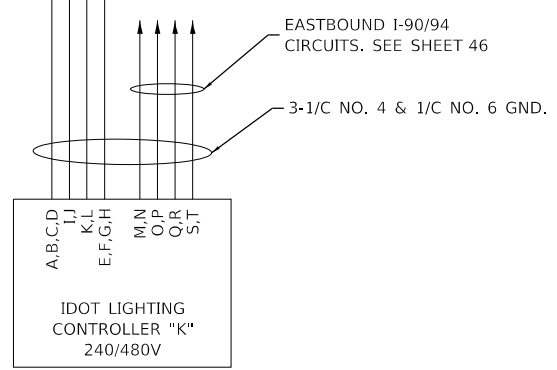
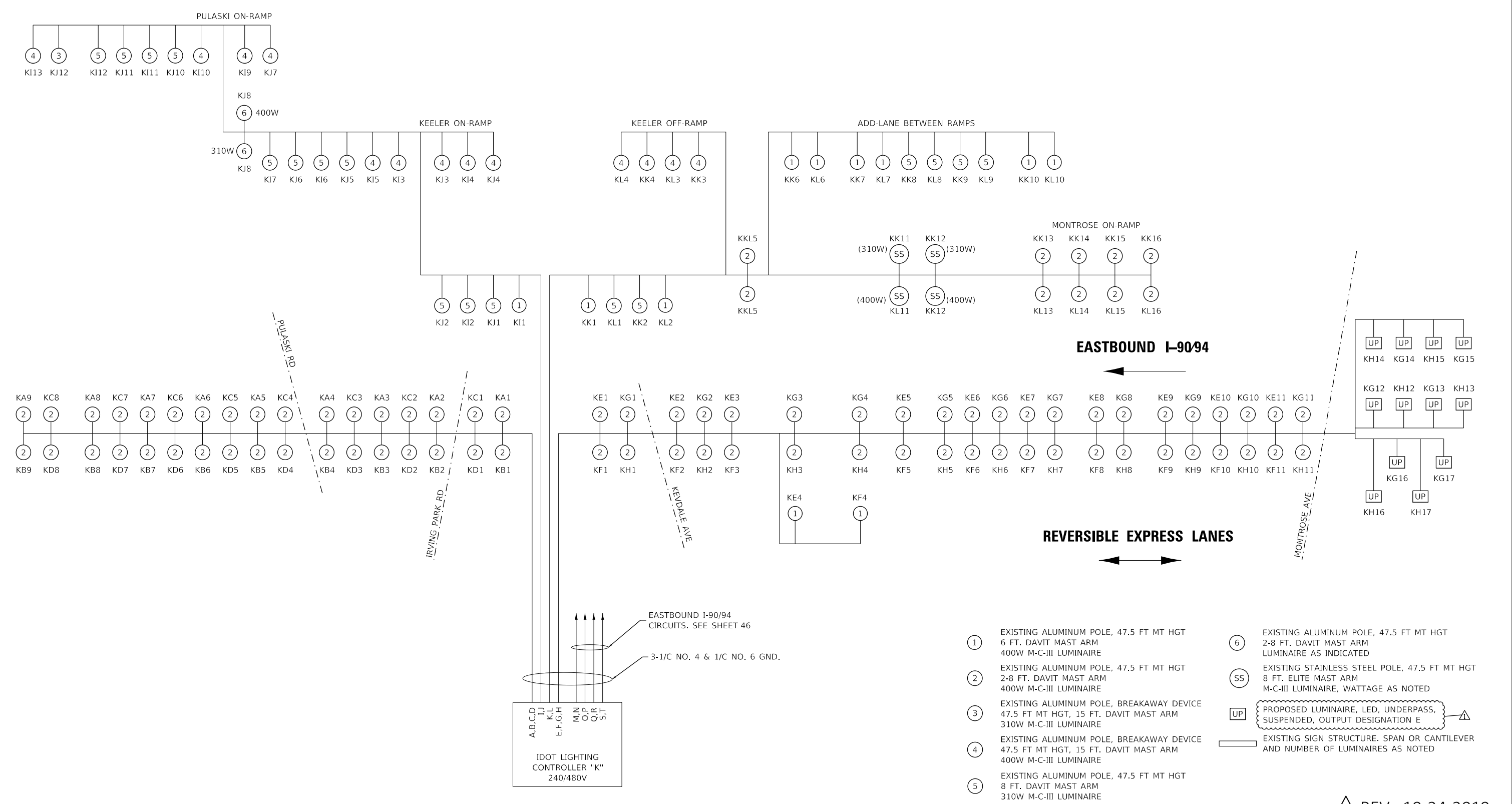
 8725 W. Higgins Road, Suite 600 Chicago, IL 60631
 P 773.775.6009 | www.ciorba.com

USER NAME = untitled	DESIGNED - DTJ	REVISED - 10/22/2019 JMV
PLOT SCALE = 40.0000' / in.	DRAWN - DTJ	REVISED -
PLOT DATE = 10/10/2019	CHECKED - JMV	REVISED -
	DATE - 8/12/2019	REVISED -

**STATE OF ILLINOIS
DEPARTMENT OF TRANSPORTATION**

**F.A.I. 94 (INTERSTATE 94) AT MONTROSE AVENUE
IDOT SINGLE LINE DIAGRAM (WESTBOUND)**
 SCALE: N.T.S. SHEET NO. 1 OF 2 SHEETS STA. TO STA.

F.A.I. RTE.	SECTION	COUNTY	TOTAL SHEETS	SHEET NO.
94	267-0101.3-B-R	COOK	120	46
CONTRACT NO. 62F95			ILLINOIS FED. AID PROJECT NHPP-XG101992	



- ① EXISTING ALUMINUM POLE, 47.5 FT MT HGT 6 FT. DAVIT MAST ARM 400W M-C-III LUMINAIRE
- ② EXISTING ALUMINUM POLE, 47.5 FT MT HGT 2-8 FT. DAVIT MAST ARM 400W M-C-III LUMINAIRE
- ③ EXISTING ALUMINUM POLE, BREAKAWAY DEVICE 47.5 FT MT HGT, 15 FT. DAVIT MAST ARM 310W M-C-III LUMINAIRE
- ④ EXISTING ALUMINUM POLE, BREAKAWAY DEVICE 47.5 FT MT HGT, 15 FT. DAVIT MAST ARM 400W M-C-III LUMINAIRE
- ⑤ EXISTING ALUMINUM POLE, 47.5 FT MT HGT 8 FT. DAVIT MAST ARM 310W M-C-III LUMINAIRE
- ⑥ EXISTING ALUMINUM POLE, 47.5 FT MT HGT 2-8 FT. DAVIT MAST ARM LUMINAIRE AS INDICATED
- SS EXISTING STAINLESS STEEL POLE, 47.5 FT MT HGT 2-8 FT. ELITE MAST ARM M-C-III LUMINAIRE, WATTAGE AS NOTED
- UP PROPOSED LUMINAIRE, LED, UNDERPASS, SUSPENDED, OUTPUT DESIGNATION E
- EXISTING SIGN STRUCTURE. SPAN OR CANTILEVER AND NUMBER OF LUMINAIRES AS NOTED

REV. 10-24-2019

DATE PLOTTED = 10/10/2019 10:57:27 PM
PEN TABLE = N:\Standards\CAD\Bentley\Standards\11-DOT\Plotting\CGI-PDF-plot.ctb
PLOT CONFIG = N:\Standards\CAD\Bentley\Standards\11-DOT\Plotting\CGI-PDF-plot.ctb
FILE NAME = N:\PHOU\0828\154\01\Design\10828154\01\11g282.dgn

ENGINEERING CONSULTANT

8725 W. Higgins Road, Suite 600 Chicago, IL 60631
P 773.775.6009 | www.ciorba.com

USER NAME = untitled	DESIGNED - DTJ	REVISED - 10/22/2019 JMV
PLOT SCALE = 40.0000' / in.	DRAWN - DTJ	REVISED -
PLOT DATE = 10/10/2019	CHECKED - JMV	REVISED -
	DATE - 8/12/2019	REVISED -

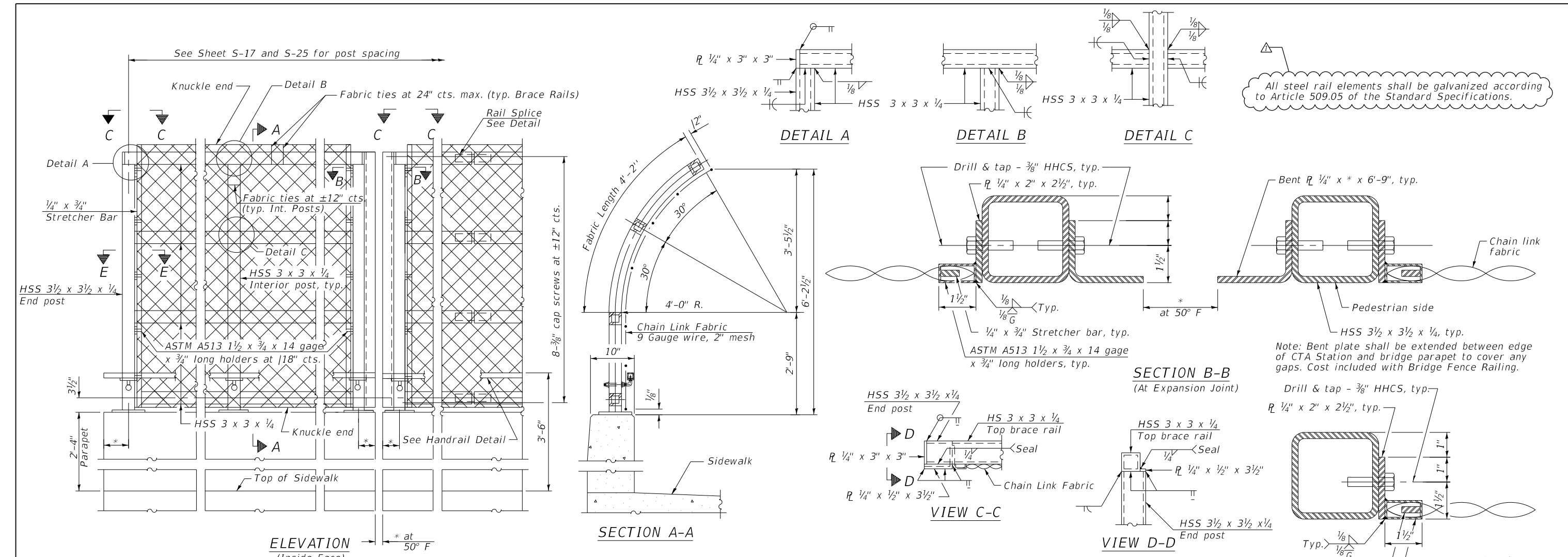
STATE OF ILLINOIS
DEPARTMENT OF TRANSPORTATION

F.A.I. 94 (INTERSTATE 94) AT MONTROSE AVENUE
IDOT SINGLE LINE DIAGRAM (EASTBOUND)

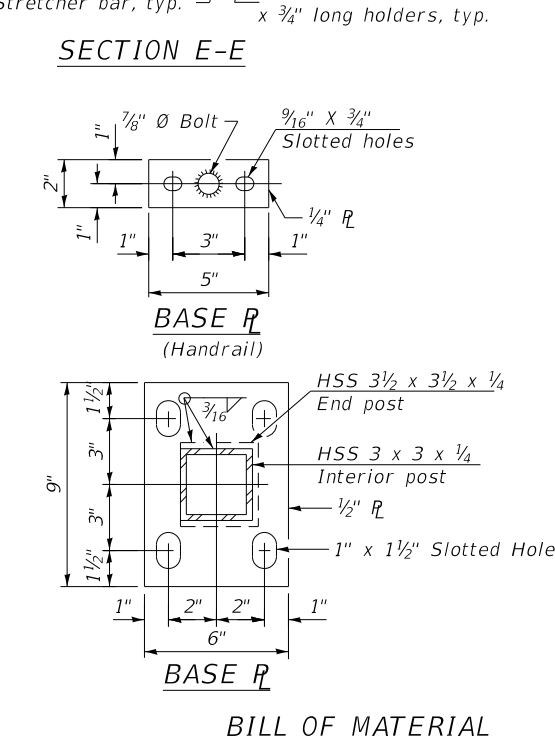
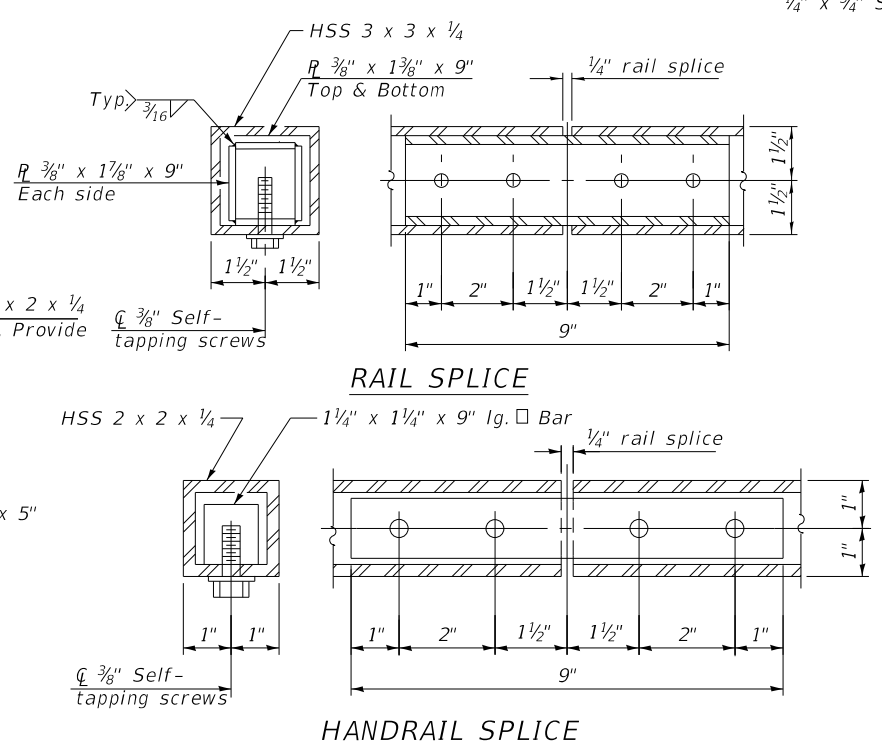
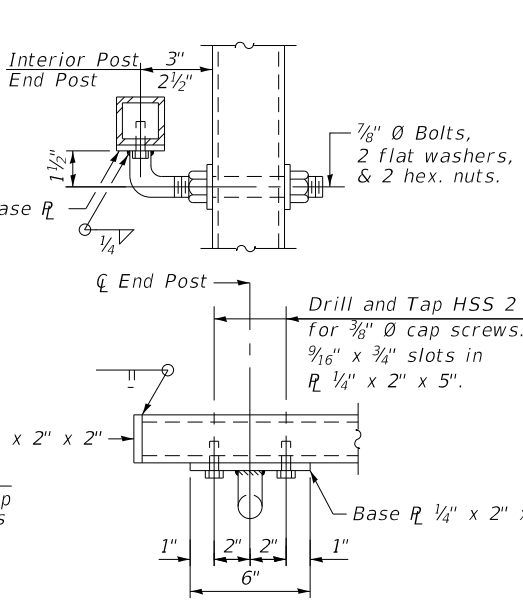
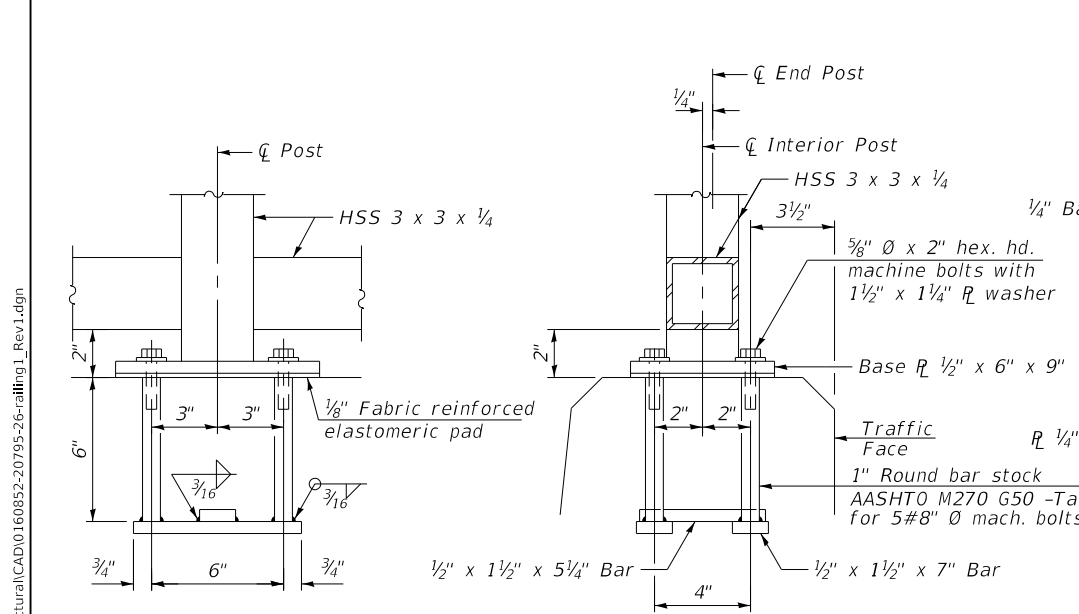
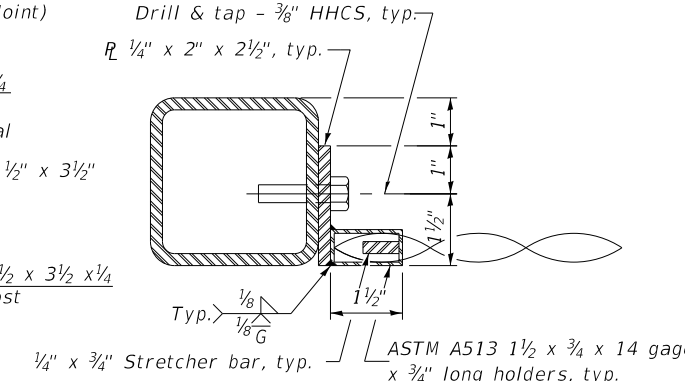
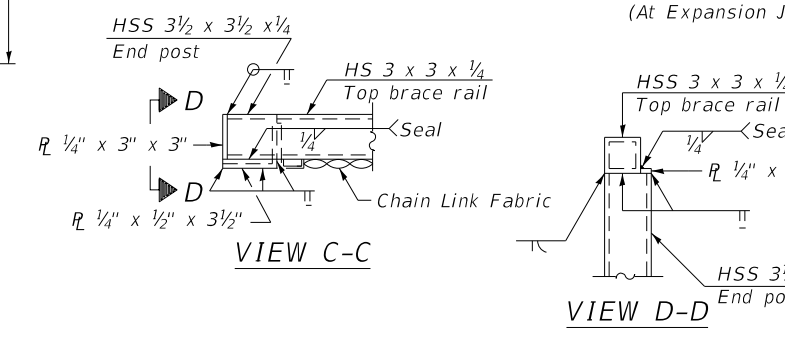
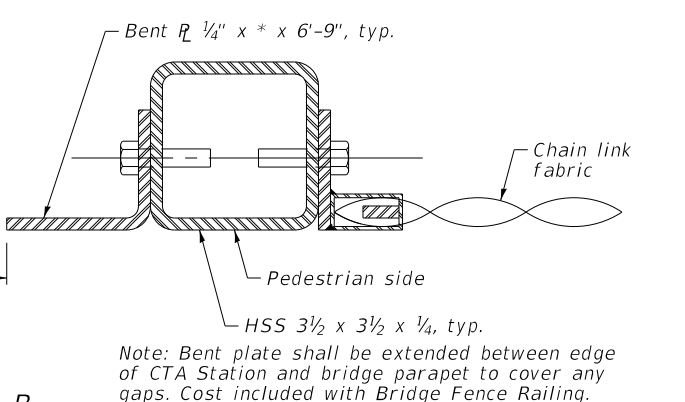
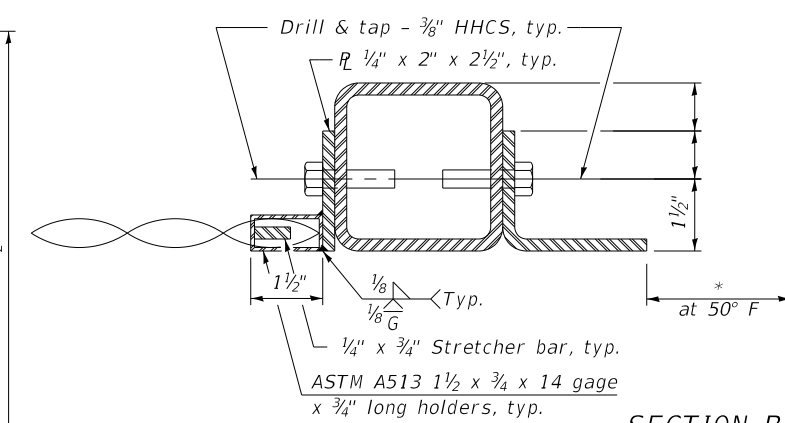
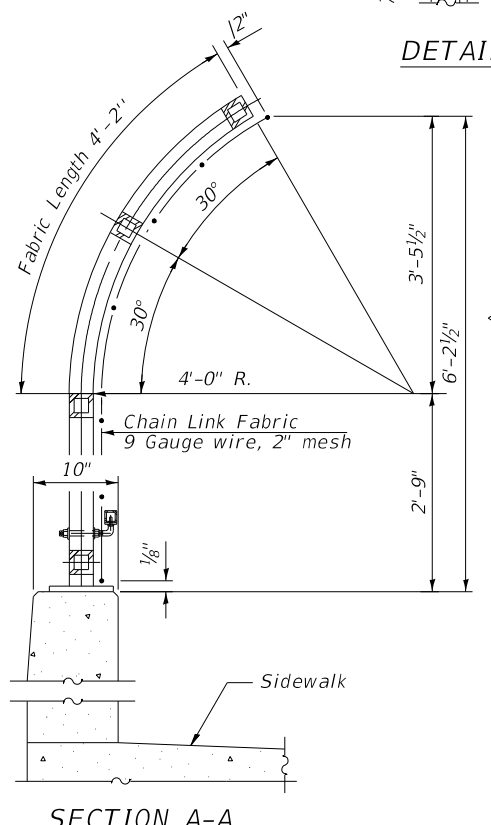
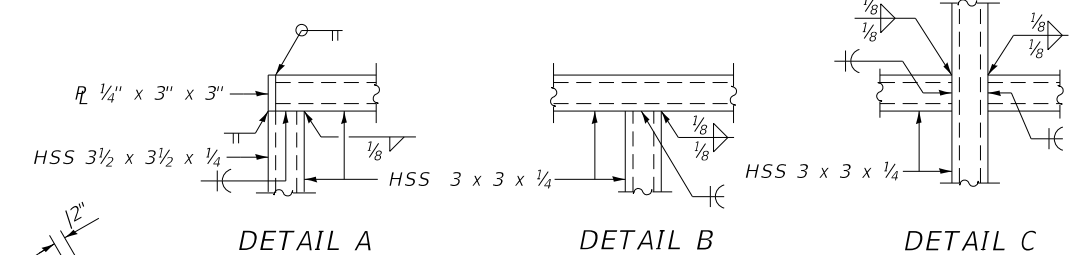
SCALE: N.T.S. SHEET NO. 2 OF 2 SHEETS STA. TO STA.

F.A.I. RTE. 94	SECTION 267-0101.3-B-R	COUNTY COOK	TOTAL SHEETS 120	SHEET NO. 47
ILLINOIS			CONTRACT NO. 62F95	
FED. AID PROJECT NHPP-XG101992				

FILE NAME: N:\PROJ\020795-01\Design\Structural\CAD\0160852-20795-26-railing_1_Rev1.dgn



All steel rail elements shall be galvanized according to Article 509.05 of the Standard Specifications.



In lieu of the cast-in-place anchor device shown, the CONTRACTOR has the option of drilling and setting 3/8" Ø anchor rods according to Article 509.06 of the Standard Specifications. Embedment shall be according to the MANUFACTURER'S specifications.

*Variable - See Sheet S-17 and S-25 (10'-0" Maximum Post Spacing)

NOTE:
1. CVN testing may be omitted for the railing.

REV. 10-24-2019



ENGINEERING CONSULTANT	USER NAME = Structural	DESIGNED - MLK	REVISED - 10/22/2019 MLK
		CHECKED - BS	REVISED -
	PLOT SCALE = 0:2.0000 "/in.	DRAWN - SBA	REVISED -
	PLOT DATE = 10/23/19	CHECKED - BS	REVISED -

STATE OF ILLINOIS
DEPARTMENT OF TRANSPORTATION

BRIDGE FENCE RAILING
STRUCTURE NO. 016-0852

Item	Unit	Quantity
Bridge Fence Railing	Foot	982

FA.I. RTE.	SECTION	COUNTY	TOTAL SHEETS	SHEET NO.
94	267-0101.3-B-R	COOK	120	81
CONTRACT NO. 62F95				
ILLINOIS FED. AID PROJECT NHPX-XG1Q(992)				