

STATE OF ILLINOIS
DEPARTMENT OF TRANSPORTATION

F.A.U. RTE.	SECTION	COUNTY	TOTAL SHEETS	SHEET NO.
3887	2023 ESS YARD PARKING	KANE	7	1
		ILLINOIS	CONTRACT NO. 62W05	

FOR INDEX OF SHEETS, SEE SHEET NO. 2

IMPROVEMENT IS LOCATED IN THE CITY OF ELGIN

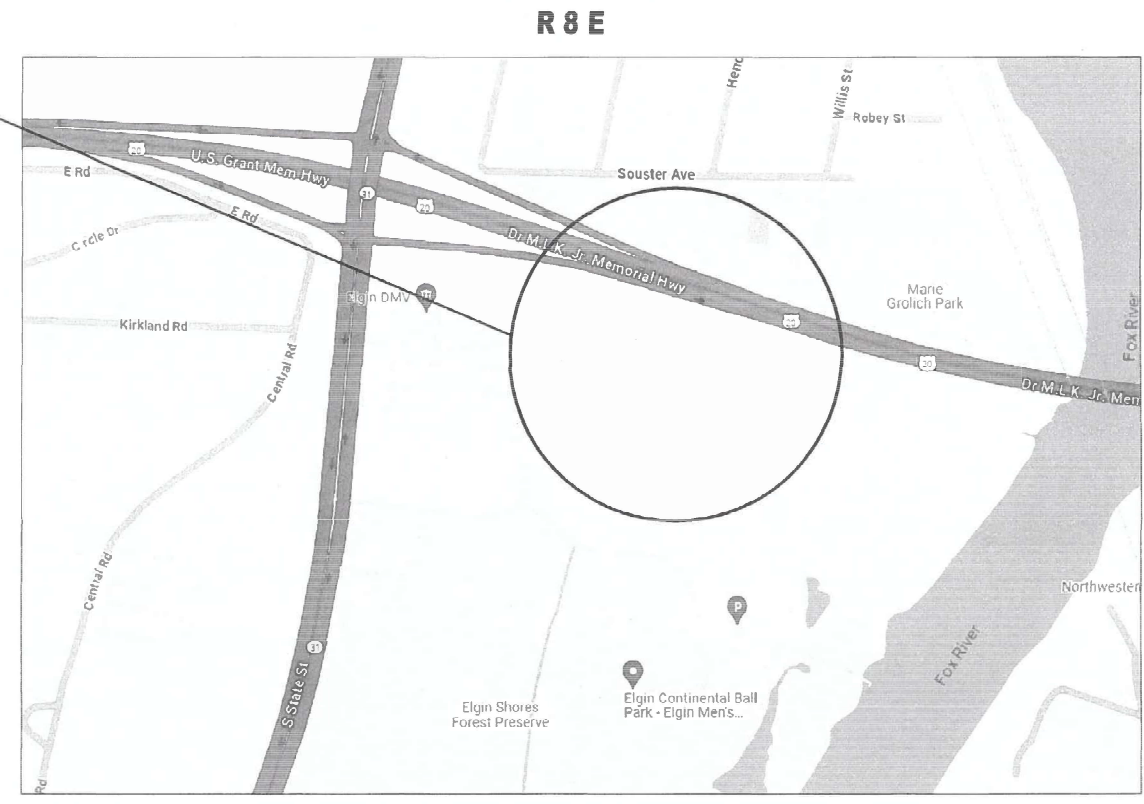
PROPOSED
HIGHWAY PLANS

FAU ROUTE 3887: IL ROUTE 31 (STATE STREET)
ELGIN SIGN SHOP YARD (595 S STATE STREET)
SECTION: 2023 ESS YARD PARKING
PARKING IMPROVEMENT, DRAINAGE
KANE COUNTY

C-91-100-24

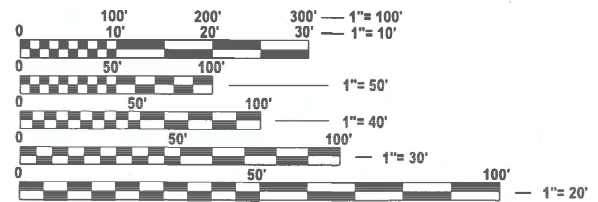


SIGN SHOP YARD IMPROVEMENT (595 S STATE ST, ELGIN)



ELGIN TOWNSHIP

GROSS AND NET LENGTH: 52.8 FEET (.01 MILES)



FULL SIZE PLANS HAVE BEEN PREPARED USING STANDARD ENGINEERING SCALES. REDUCED SIZED PLANS WILL NOT CONFORM TO STANDARD SCALES. IN MAKING MEASUREMENTS ON REDUCED PLANS, THE ABOVE SCALES MAY BE USED.

J.U.L.I.E.
JOINT UTILITY LOCATION INFORMATION FOR EXCAVATION
1-800-892-0123
OR 811

PROJECT ENGINEER: DANIEL WILGREEN, P.E. (847) 705-4240
PROJECT MANAGER: J. ALAIN MIDY, P.E. (847) 221-3056

CONTRACT NO. 62W05

STATE OF ILLINOIS
DEPARTMENT OF TRANSPORTATION

SUBMITTED Aug 19th 2024
Jose Ros REGIONAL ENGINEER

October 4, 2024
Scott E.A. Etk
ENGINEER OF DESIGN AND ENVIRONMENT

October 4, 2024
Gerard J. Gu
DIRECTOR OF HIGHWAYS PROJECT IMPLEMENTATION

PRINTED BY THE AUTHORITY OF THE STATE OF ILLINOIS

INDEX OF SHEETS

STATE STANDARDS

GENERAL NOTES

SHEET NO.

DESCRIPTION

STANDARD NO.

DESCRIPTION

1	COVER SHEET
2	INDEX OF SHEETS, STATE STANDARDS, AND GENERAL NOTES
3	SUMMARY OF QUANTITIES
4	TYPICAL SECTIONS
5	PROPOSED SITE AND PLAN
6	PROPOSED GRADING PLAN
7	TRAFFIC CONTROL AND PROTECTION FOR SIDE ROADS, INTERSECTIONS, AND DRIVEWAYS (TC-10)

00001-08	STANDARD SYMBOLS, ABBREVIATIONS, AND PATTERNS
442201-03	CLASS C AND D PATCHES
701006-05	OFF-RD OPERATIONS, 2L, 2W, 15' (4.5 M) TO 24" (600 MM) FROM PAVEMENT EDGE
701301-04	LANE CLOSURE, 2L, 2W, SHORT TIME OPERATIONS
701901-09	TRAFFIC CONTROL DEVICES

- 1 THE CONTRACTOR WILL NOT BE ALLOWED TO SET UP A YARD OR FIELD OFFICE ON STATE PROPERTY WITHOUT WRITTEN PERMISSION FROM THE DEPARTMENT.
- 2 ALL FINAL PATCHING LOCATIONS WILL BE DETERMINED IN THE FIELD BY THE RESIDENT ENGINEER.
- 3 THE CONTRACTOR SHALL COORDINATE CONSTRUCTION ACTIVITIES WITH THE LANDSCAPE MAINTENANCE YARD TEAM SECTION TECHNICIAN STEVEN LIPKIE AT 847-705-4173 OR AT STEVEN.LIPKIE@ILLINOIS.GOV.
- 4 IT SHALL BE THE CONTRACTOR'S RESPONSIBILITY TO VERIFY ALL DIMENSIONS AND CONDITIONS EXISTING IN THE FIELD PRIOR TO CONSTRUCTION AND ORDERING OF MATERIALS.
- 5 EXISTING BROKEN FRAMES AND LIDS SHALL BE REMOVED AND DISPOSED OF BY THE CONTRACTOR AND SHALL BE REPLACED AS DIRECTED BY THE ENGINEER. REPLACEMENT FRAMES AND LIDS WILL BE PAID FOR ACCORDING TO ARTICLE 109.04 OF THE STANDARD SPECIFICATIONS UNLESS A SEPERATE PAY ITEM HAS BEEN PROVIDED.
- 6 ALL PAVEMENT MARKINGS SHALL BE PLACED THROUGHOUT THE IMPROVEMENT ACCORDING TO DISTRICT 1 TYPICAL PAVEMENT MARKING.
- 7 FRAMES AND GRATES ADJUSTMENT OF PRIVATE UTILITIES WITHIN THE PROJECT LIMITS SHALL BE DONE BY THEIR RESPECTIVE OWNERS AND ARE NOT PART OF THIS CONTRACT.
- 8 THE CONTRACTOR SHALL CONTACT THE DISTRICT TRAFFIC CONTROL SUPERVISOR AT KALPANA.KANNAN-HOSADURGA@ILLINOIS.GOV A MINIMUM OF 72 HOURS IN ADVANCE OF BEGINNING WORK.
- 9 DO NOT SCALE PLANS FOR CONSTRUCTION DIMENSIONS.
- 10 BEFORE COMMENCING ANY WORK, THE CONTRACTOR MUST CONTACT IDOT DISTRICT 1 ELECTRICAL MAINTENANCE CONTRACTOR (EMC) MEADE ELECTRIC; TED TROYNER, 1-708-588-2544 FOR IDOT OWNED UNDERGROUND LIGHTING FACILITIES (CABLES, CONDUITS ETC.) IDENTIFICATION.
- 11 THE RESIDENT ENGINEER SHALL COORDINATE WITH THE MAINTENANCE YARD SUPERVISOR WILLIAM MILANO AT WILLIAM.MILANO@ILLINOIS.GOV FOR ITEMS THAT NEED TO BE MOVED.

MODEL: GenNotesSH01 [Sheet]
FILE NAME: c:\pw\work\elgin\hamwi\mid1004557\108524-sht-gennote.dgn

USER NAME = mohammad.hamwi	DESIGNED -	REVISED -
	DRAWN -	REVISED -
PLOT SCALE = 0.16666633 ' / in.	CHECKED -	REVISED -
PLOT DATE = 8/22/2024	DATE -	REVISED -

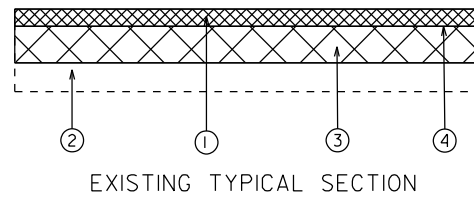
**STATE OF ILLINOIS
DEPARTMENT OF TRANSPORTATION**

**ELGIN SIGN SHOP (595 S STATE ST, ELGIN)
INDEX OF SHEETS, STATE STANDARDS, GENERAL NOTES**

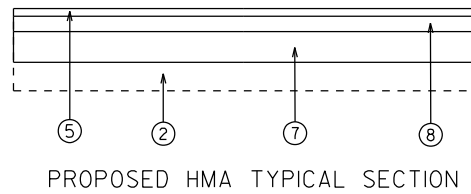
SCALE: SHEET OF 1 SHEETS STA. TO STA.

F.A.U. RTE.	SECTION	COUNTY	TOTAL SHEETS	SHEET NO.
3887	2023 ESS YARD PARKING	KANE	7	2
CONTRACT NO. 62W05				
ILLINOIS FED. AID PROJECT				

ELGIN SIGN SHOP YARD



ELGIN SIGN SHOP YARD



LEGEND

- ① EXISTING HMA PAVEMENT (2"-6" TYP)
- ② EXISTING SUBGRADE
- ③ PROPOSED SUBGRADE REMOVAL (EARTH EXCAVATION)
- ④ PROPOSED PAVEMENT REMOVAL (FULL DEPTH)
- ⑤ HOT-MIX ASPHALT SURFACE COURSE, MIX "D", N70 (IL-9.5), 1 1/2"
- ⑥ PROPOSED PCC DRIVEWAY PAVEMENT, 10"
- ⑦ PROPOSED SUBBASE GRANULAR MATERIAL TYPE B, 6"
- ⑧ PROPOSED HOT-MIX ASPHALT BINDER COURSE, IL-19.0, N70, 3"

NOTES

PROPOSED HMA AND PCC SECTIONS DO NOT HAVE THE SAME TOTAL DEPTH OF EXCAVATION. PLEASE BE AWARE OF ELEVATIONS WHILE EXCAVATING.

HOT-MIX ASPHALT MIXTURE REQUIREMENTS		QUALITY MANAGEMENT PROGRAM (QMP)
MIXTURE TYPE	AIR VOIDS(%) @ N _{DES.}	
PAVEMENT RECONSTRUCTION		
HOT-MIX ASPHALT SURFACE COURSE, MIX "D", N70 (IL-9.5), 1 1/2"	4% @ 70 GYR	QC/QA
HOT-MIX ASPHALT BINDER COURSE, IL-19.0, N70, 3"	4% @ 70 GYR	QC/QA
QMP DESIGNATION: QUALITY CONTROL/QUALITY ASSURANCE(QA/QC); QUALITY CONTROL FOR PERFORMANCE(QCP); PAY FOR PERFORMANCE(PFP)		

MIXTURE NOTES:

1. THE UNIT WEIGHT USED TO CALCULATE ALL HMA SURFACE MIXTURE QUANTITIES IS 112 LBS/SQ YD/IN.
2. THE "AC TYPE" FOR POLYMERIZED HMA MIXES SHALL BE "SBS/SBR PG 76-22" AND FOR NON-POLYMERIZED HMA THE "AC TYPE" SHALL BE "PG 64-22" UNLESS MODIFIED BY RECLAIMED MATERIALS SPECIFICATIONS.

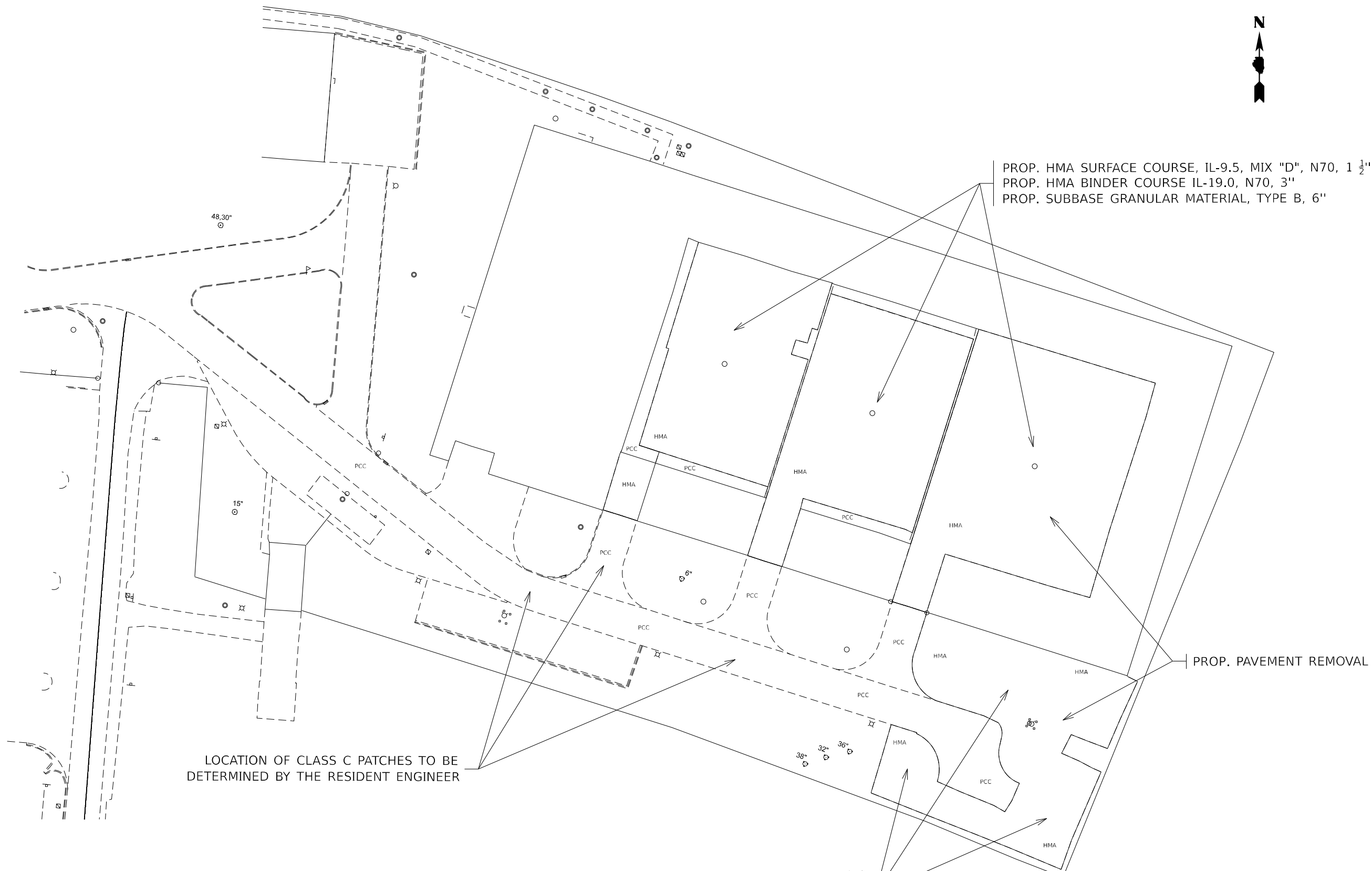
MODEL: TYPICAL SECTION (Sheet)
FILE NAME: c:\p\work\elgin\ham\mid1004557\108624-shp-typical.dgn

USER NAME = jammal.aramahi	DESIGNED -	REVISED -
	DRAWN -	REVISED -
	CHECKED -	REVISED -
PLOT DATE = 8/21/2024	DATE -	REVISED -

**STATE OF ILLINOIS
DEPARTMENT OF TRANSPORTATION**

ELGIN SIGN SHOP YARD TYPICAL SECTIONS	
SCALE:	SHEET OF 1 SHEETS STA. TO STA.

F.A.U. RTE.	SECTION	COUNTY	TOTAL SHEETS	SHEET NO.
3887	2023 ESS YARD PARKING	KANE	7	4
CONTRACT NO. 62W05				
		ILLINOIS	FED. AID PROJECT	



PROP. HMA SURFACE COURSE, IL-9.5, MIX "D", N70, 1 1/2"
 PROP. HMA BINDER COURSE IL-19.0, N70, 3"
 PROP. SUBBASE GRANULAR MATERIAL, TYPE B, 6"

PROP. PAVEMENT REMOVAL

LOCATION OF CLASS C PATCHES TO BE DETERMINED BY THE RESIDENT ENGINEER

PROP. HMA SURFACE COURSE, IL-9.5, MIX "D", N70, 1 1/2"
 PROP. HMA BINDER COURSE IL-19.0, N70, 3"
 PROP. SUBBASE GRANULAR MATERIAL, TYPE B, 6"

* LOCATIONS OF MANHOLES TO BE RECONSTRUCTED TO BE DETERMINED BY THE RESIDENT ENGINEER

MODEL: Proposed Grading Plan
 FILE NAME: c:\pwworking\mohammadhamwi\1004557\108624-shh-plan.dgn

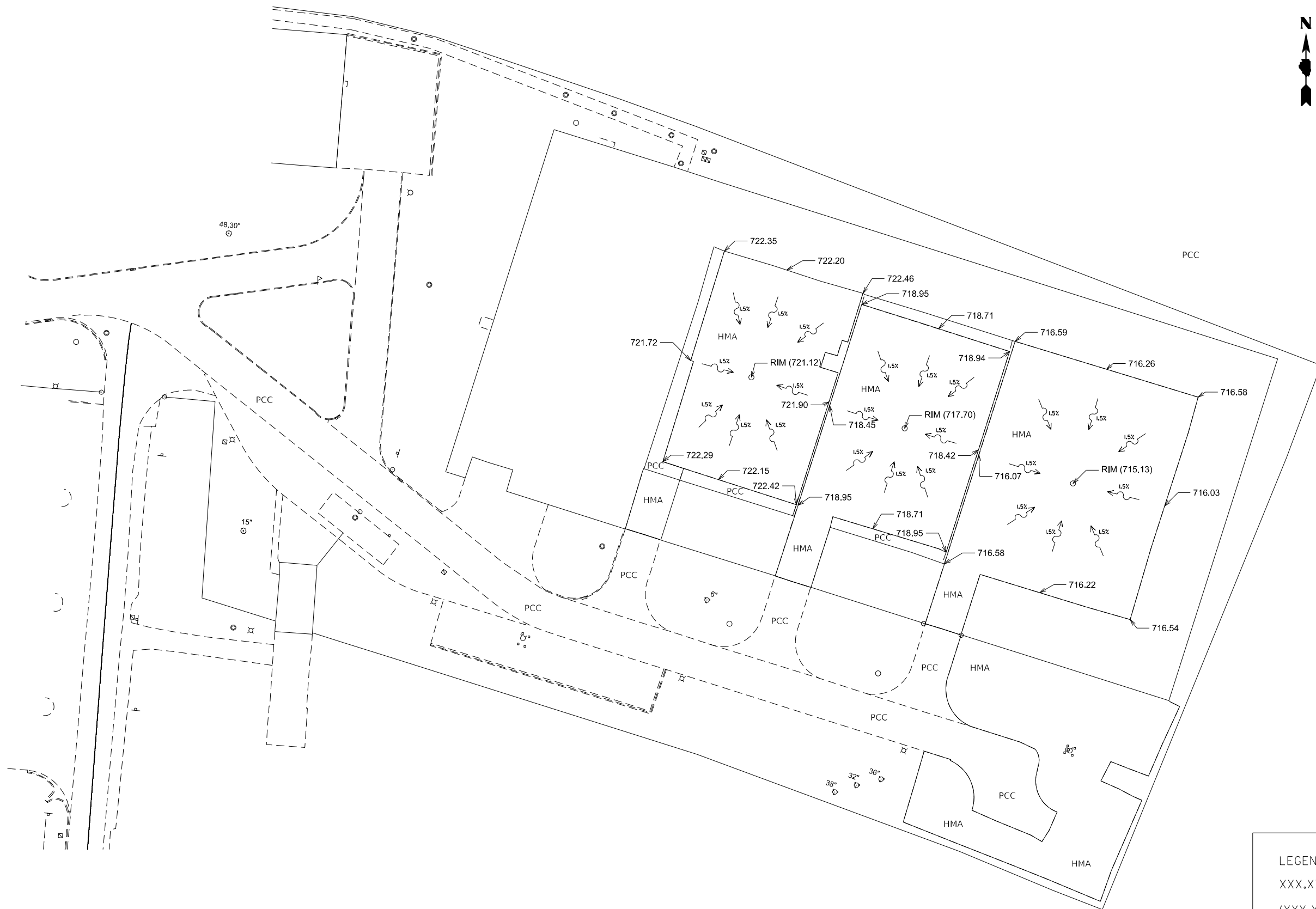
USER NAME = mohammad.hamwi	DESIGNED -	REVISED -
	DRAWN -	REVISED -
PLOT SCALE = 0.16666633' / in.	CHECKED -	REVISED -
PLOT DATE = 8/22/2024	DATE -	REVISED -

STATE OF ILLINOIS
DEPARTMENT OF TRANSPORTATION

ELGIN SIGN SHOP YARD (595 S. STATE ST)
PROPOSED SITE AND PLAN

SCALE: SHEET OF 2 SHEETS STA. 0+00.00 TO STA. 0+00.00

F.A.U. RTE.	SECTION	COUNTY	TOTAL SHEETS	SHEET NO.
3887	2023 ESS YARD PARKING	KANE	7	5
CONTRACT NO. 62W05				
ILLINOIS FED. AID PROJECT				



LEGEND:
 XXX.XX - PROPOSED
 (XXX.XX) - EXISTING

MODEL: Proposed Site Plan
 FILE NAME: c:\p\work\elgin\ham\m\id1004557\ID108624-shp-plan.dgn

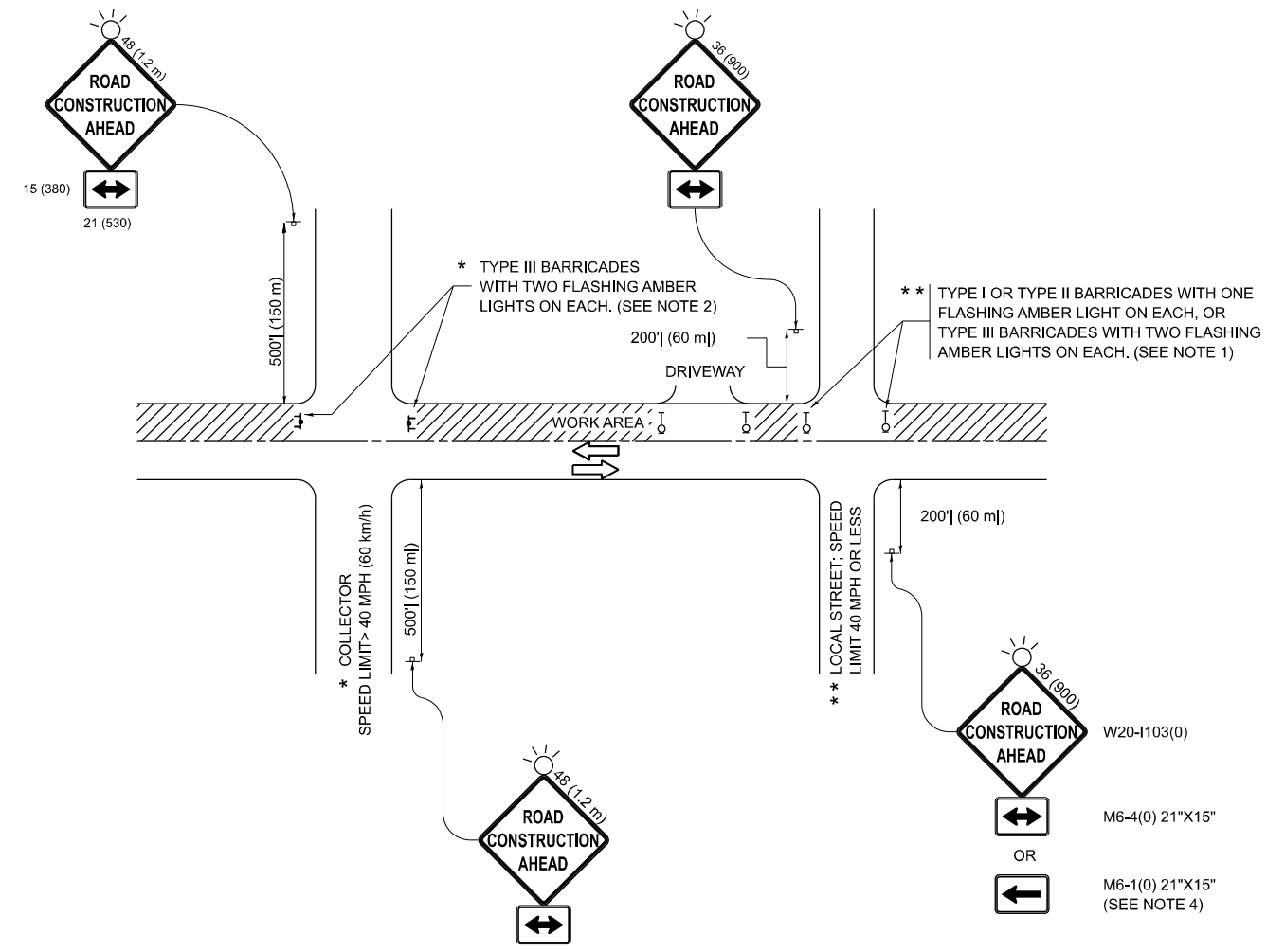
USER NAME = mohammad.hamwi	DESIGNED -	REVISED -
	DRAWN -	REVISED -
PLOT SCALE = 0.16666833' / in.	CHECKED -	REVISED -
PLOT DATE = 8/22/2024	DATE -	REVISED -

STATE OF ILLINOIS
DEPARTMENT OF TRANSPORTATION

ELGIN SIGN SHOP YARD (595 S. STATE ST)
PROPOSED GRADING PLAN

SCALE: SHEET OF 2 SHEETS STA. 0+00.00 TO STA. 0+00.00

F.A.U. RTE.	SECTION	COUNTY	TOTAL SHEETS	SHEET NO.
3887	2023 ESS YARD PARKING	KANE	7	6
CONTRACT NO. 62W05				
ILLINOIS FED. AID PROJECT				



NOTES:

1. SIDE ROAD WITH A SPEED LIMIT OF 40 MPH (60 km/h) OR LESS AS SHOWN ON THE DRAWING AND AS DIRECTED BY THE ENGINEER:
 - a) ONE "ROAD CONSTRUCTION AHEAD" SIGN 36 x 36 (900x900) WITH A FLASHER MOUNTED ON IT APPROXIMATELY 200' (60 m) IN ADVANCE OF THE MAIN ROUTE.
 - b) THE CLOSED PORTION OF THE MAIN ROUTE SHALL BE PROTECTED BY BLOCKING WITH TYPE I, TYPE II OR TYPE III BARRICADES, 1/3 OF THE CROSS SECTION OF THE CLOSED PORTION.
2. SIDE ROAD WITH A SPEED LIMIT GREATER THAN 40 MPH (60 km/h) AS SHOWN ON THE DRAWING AND AS DIRECTED BY THE ENGINEER:
 - a) ONE "ROAD CONSTRUCTION AHEAD" SIGN 48 x 48 (1.2 m x 1.2 m) WITH A FLASHER MOUNTED ON IT APPROXIMATELY 500' (150 m) IN ADVANCE OF THE MAIN ROUTE.
 - b) THE CLOSED PORTION OF THE MAIN ROUTE SHALL BE PROTECTED BY BLOCKING WITH TYPE III BARRICADES, 1/2 OF THE CROSS SECTION OF THE CLOSED PORTION.
3. CONES MAY BE SUBSTITUTED FOR BARRICADES OR DRUMS AT HALF THE SPACING DURING DAY OPERATIONS. CONES SHALL BE A MINIMUM OF 28 (710) IN HEIGHT.
4. WHEN THE SIDE ROAD LIES BETWEEN THE BEGINNING OF THE MAINLINE SIGNING AND THE WORK ZONE, A SINGLE HEADED ARROW (M6-1) SHALL BE USED IN LIEU OF THE DOUBLE HEADED ARROW (M6-4).
5. WHEN WORK IS BEING PERFORMED ON A SIDE ROAD OR DRIVEWAY, FOLLOW THE APPLICABLE STANDARD(S). THE DIRECTIONAL ARROW (M6-1 OR M6-4) SHALL BE COVERED OR REMOVED WHEN NO LONGER CONSISTENT WITH THE TRAFFIC CONTROL SET-UP.
6. ADVANCE WARNING SIGNS ARE TO BE OMITTED ON DRIVEWAYS UNLESS OTHERWISE SPECIFIED IN THE PLANS OR BY THE ENGINEER.
7. THE TRAFFIC CONTROL AND PROTECTION FOR SIDE ROADS, INTERSECTIONS, AND DRIVEWAYS SHALL BE INCLUDED IN THE COST OF SPECIFIED TRAFFIC CONTROL STANDARDS OR ITEMS.

All dimensions are in inches (millimeters) unless otherwise shown.

MODEL: TC-12 (Sheet)
FILE NAME: c:\p\work\pww\toham\m\id1004557\ID108524-shh-Dist\Sigs.dgn

USER NAME = mohammad.hamwi	DESIGNED - L.H.A.	REVISED - T. RAMMACHER 01-06-00
	DRAWN -	REVISED - A. SCHUETZE 07-01-13
PLOT SCALE = 0.16666633" / in.	CHECKED -	REVISED - A. SCHUETZE 09-15-06
PLOT DATE = 8/22/2024	DATE - 06-89	REVISED - D. SENDERAK 05-03-24

**STATE OF ILLINOIS
DEPARTMENT OF TRANSPORTATION**

**TRAFFIC CONTROL AND PROTECTION FOR
SIDE ROADS, INTERSECTIONS, AND DRIVEWAYS**

SCALE: SHEET OF SHEETS STA. TO STA.

F.A.U. RTE.	SECTION	COUNTY	TOTAL SHEETS	SHEET NO.
3887	2023 ESS YARD PARKING	KANE	7	7
TC-10			CONTRACT NO. 62W05	
ILLINOIS FED. AID PROJECT				