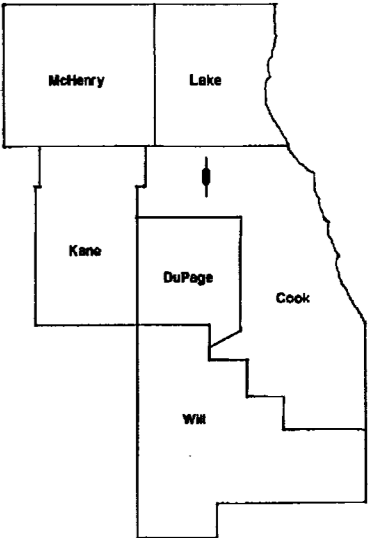


FA ROUTE	SECTION	COUNTY	TOTAL SHEETS	SHEET NUMBER
FAU 1292	2008-DL	COOK		1

STATE OF ILLINOIS
DEPARTMENT OF TRANSPORTATION
DIVISION OF HIGHWAYS
DISTRICT ONE
PROPOSED HIGHWAY PLANS

FOR INDEX OF SHEETS SEE SHEET 2

FAU1292 (EUCLID AVE)
ILLINOIS ROUTE 53
SECTION 2008-DL
SN: 016-1018
STEEL REPAIRS
COOK COUNTY



LOCATION OF IMPROVEMENT INDICATED THUS:



Location of Work

*2008
DL work*

TRAFFIC DATA

EUCLID AVE ADT = 24,900
POSTED SPEED LIMIT = 45 MPH

IL RTE 53 ADT = 150,100
POSTED SPEED LIMIT = 55 MPH

PRINTED BY THE AUTHORITY
OF THE STATE OF ILLINOIS

J.U.L.I.E.: JOINT UTILITY LOCATION
 INFORMATION FOR EXCAVATION
 (800) 892-0123

DAY LABOR NO. 09

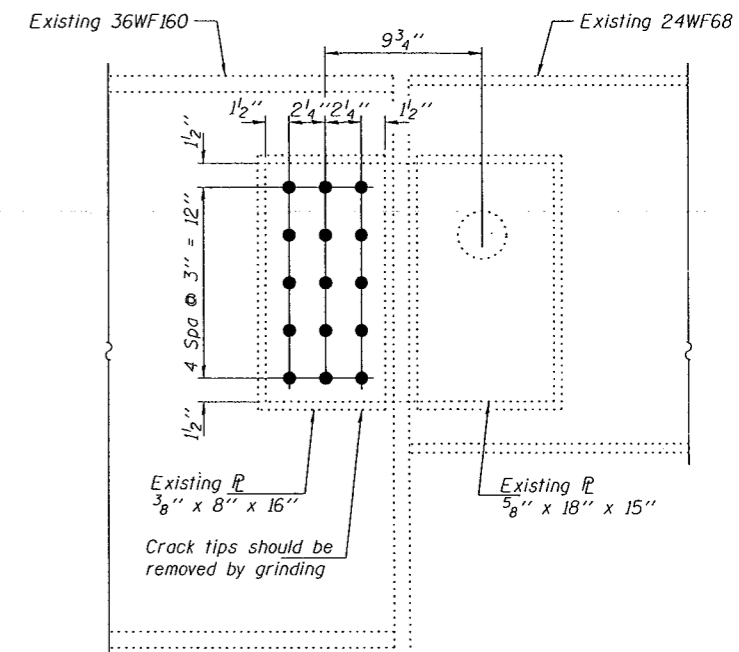
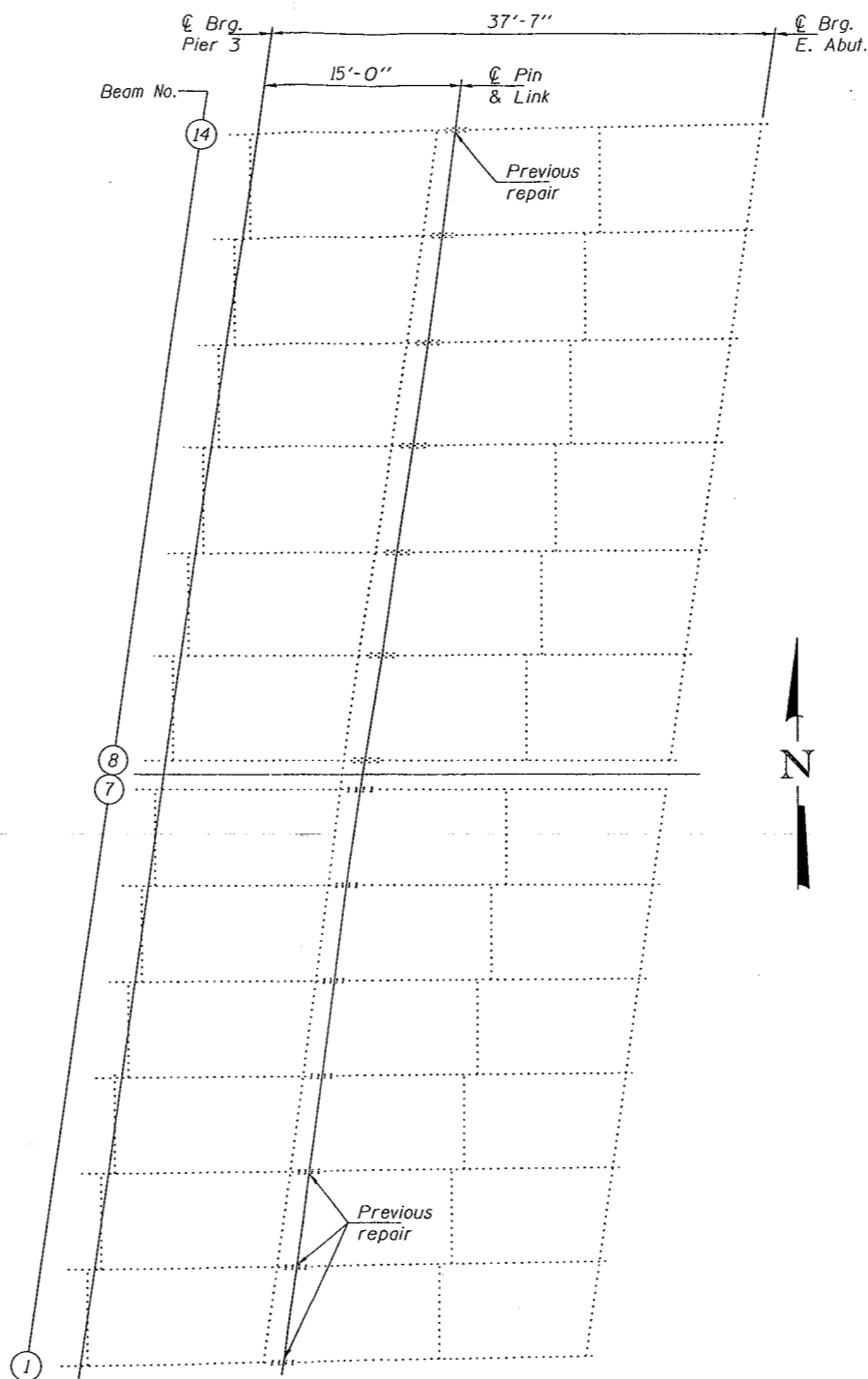
PALATINE TOWNSHIP

DISTRICT ONE BUREAU OF MAINTENANCE
 MAINTENANCE BRIDGE ENGINEER: S. WILSON (847) 705-4181

STATE OF ILLINOIS
DEPARTMENT OF TRANSPORTATION

ROUTE NO.	SECTION	COUNTY	TOTAL SHEETS	SHEET NO.
		COOK		1
FED. ROAD DIST. NO. 7	ILLINOIS	FED. AID PROJECT-		

SHEET NO. 1
1 SHEETS



ELEVATION AT PIN AND LINK

Fasteners shall be high strength bolts.
Bolts $\frac{3}{4}$ " ϕ , open holes $\frac{13}{16}$ " ϕ .

PARTIAL PLAN

Repair Location:
Beams 4 thru. 13 Pin and Link East of
Pier 3, between Pier 3 and East Abutment.



EXPIRES 11-30-2008

DESIGNED	<i>Vic F. H. Vel...</i>
CHECKED	<i>...</i>
DRAWN	baliva
CHECKED	<i>V.H. ...</i>

	FEBRUARY 27, 2008
EXAMINED	<i>...</i>
PASSED	<i>...</i>

PIN AND LINK REPAIR
FAU RT. 1292
COOK COUNTY
STR. NO. 016-1018