

SI *	ITEM NO.	ITEM DESCRIPTION	UNIT	TOTAL QUANTITY	ROADWAY
					0031
					100% STATE
	20100110	TREE REMOVAL (6 TO 15 UNITS DIAMETER)	UNIT	3,949	3,949
	20100210	TREE REMOVAL (OVER 15 UNITS DIAMETER)	UNIT	3,106	3,106
	20100500	TREE REMOVAL, ACRES	ACRE	15.9	15.9
	28000250	TEMPORARY EROSION CONTROL SEEDING	POUND	132	132
	67100100	MOBILIZATION	L SUM	1	1
	70100450	TRAFFIC CONTROL AND PROTECTION, STANDARD 701201	L SUM	1	1
	70100460	TRAFFIC CONTROL AND PROTECTION, STANDARD 701306	L SUM	1	1
	70100600	TRAFFIC CONTROL AND PROTECTION, STANDARD 701336	L SUM	1	1
	70102620	TRAFFIC CONTROL AND PROTECTION, STANDARD 701501	L SUM	1	1
	70102622	TRAFFIC CONTROL AND PROTECTION, STANDARD 701502	L SUM	1	1
	70102625	TRAFFIC CONTROL AND PROTECTION, STANDARD 701606	L SUM	1	1
	70102630	TRAFFIC CONTROL AND PROTECTION, STANDARD 701601	L SUM	1	1
	70102635	TRAFFIC CONTROL AND PROTECTION, STANDARD 701701	L SUM	1	1
	K1004595	PRUNING FOR SAFETY AND EQUIPMENT CLEARANCE	L SUM	1	1
	X2010516	SELECTIVE CLEARING	UNIT	57.1	57.1
	Z0013798	CONSTRUCTION LAYOUT	L SUM	1	1
	X2010310	TREE REMOVAL (SPECIAL)	UNIT	1,622	1,622
	Z0030850	TEMPORARY INFORMATION SIGNING	SQ FT	51.4	51.4



MODEL: Default  
 FILE NAME: \\patrick\pwr11\c01\ICS\_nfl\_work\dr2\262133293\_2\62X14-SHT-500-TREE.dgn



USER NAME = eboelter	DESIGNED - EJB	REVISED -
	DRAWN - EJB	REVISED -
PLOT SCALE = 100:1	CHECKED - KE	REVISED -
PLOT DATE = 20-AUG-2024	DATE - 08/12/2024	REVISED -

**STATE OF ILLINOIS  
DEPARTMENT OF TRANSPORTATION**

**SUMMARY OF QUANTITIES**

SCALE: NTS      SHEET 1 OF 1 SHEETS      STA.      TO STA.

F.A.P. RTE.	SECTION	COUNTY	TOTAL SHEETS	SHEET NO.
336A	2024-989-ATR	McHENRY	72	3
CONTRACT NO. 62X14				
ILLINOIS		FED. AID PROJECT		

⚠️ REVISED SHEET 10/28/2024

TREE REMOVAL									
STA	OFFSET	LT/RT	NO. OF STEMS	STREET	SIZE	TREE REMOVAL (3-6 UNITS DIAMETER)	TREE REMOVAL (6 TO 15 UNITS DIAMETER)	TREE REMOVAL (OVER 15 UNITS DIAMETER)	TREE REMOVAL, ACRES
						TREE REMOVAL (SPECIAL)	UNIT	UNIT	UNIT
123+41.90	82.0	RT	1	IL 31	5	5	-	-	
123+63.70	75.5	RT	1	IL 31	5	5	-	-	
123+79.80	72.4	RT	1	IL 31	5	5	-	-	
124+68.40	61.0	RT	1	IL 31	7.0	-	7	-	
125+13.30	59.3	RT	1	IL 31	7.0	-	7	-	
125+48.20	59.8	RT	1	IL 31	7.0	-	7	-	
125+89.60	59.8	RT	1	IL 31	7.0	-	7	-	
126+23.70	59.7	RT	1	IL 31	6.0	-	6	-	
127+46.40	60.3	RT	1	IL 31	8.0	-	8	-	
135+53.40	53.0	RT	1	IL 31	6.0	-	6	-	
135+91.99	51.8	RT	2	IL 31	-	8	-	-	
136+33.40	50.3	RT	1	IL 31	4.0	4	-	-	
136+81.30	48.8	RT	1	IL 31	5.0	5	-	-	
137+13.30	49.6	RT	1	IL 31	5.0	5	-	-	
139+37.70	61.8	LT	1	IL 31	14.0	-	14	-	
140+17.03	60.8	LT	1	IL 31	12.0	-	12	-	
140+52.20	60.7	LT	1	IL 31	13.0	-	13	-	
140+81.80	44.8	LT	1	IL 31	5.0	5	-	-	
141+14.62	63.5	LT	1	IL 31	15.0	-	15	-	
141+21.70	43.6	LT	1	IL 31	5.0	5	-	-	
141+62.00	44.9	LT	1	IL 31	6.0	-	6	-	
142+65.00	45.5	LT	1	IL 31	5.0	5	-	-	
143+05.10	45.5	LT	1	IL 31	7.0	-	7	-	
147+75.00	59.5	LT	-	IL 31	-	-	-	-	0.05
155+16.21	69.4	LT	1	IL 31	30.0	-	-	30	
155+18.81	61.4	LT	1	IL 31	28.0	-	-	28	
155+57.60	62.9	LT	1	IL 31	9.0	-	9	-	
155+75.10	54.5	LT	1	IL 31	15.0	-	15	-	
155+94.13	84.1	LT	1	IL 31	17.0	-	-	17	
156+35.00	56.7	LT	1	IL 31	18.0	-	-	18	
156+41.20	50.3	LT	1	IL 31	12.0	-	12	-	
156+45.10	60.6	LT	1	IL 31	16.0	-	-	16	
156+66.60	63.1	LT	1	IL 31	19.0	-	-	19	
156+95.90	54.2	LT	1	IL 31	16.0	-	-	16	
157+17.80	48.6	LT	1	IL 31	16.0	-	-	16	
157+33.60	56.2	LT	1	IL 31	17.0	-	-	17	
157+59.90	51.5	LT	1	IL 31	16.0	-	-	16	
157+72.70	3.0	LT	1	IL 31	5.0	5	-	-	
157+89.10	33.2	LT	2	IL 31	-	10	-	-	
157+97.90	51.3	LT	1	IL 31	15.0	-	15	-	
158+02.20	68.9	RT	1	IL 31	13.0	-	13	-	
158+05.70	56.2	LT	1	IL 31	15.0	-	15	-	
158+13.50	49.2	LT	2	IL 31	-	-	15	-	
158+75.00	29.1	LT	-	IL 31	-	-	-	-	0.08
159+03.50	85.1	RT	1	IL 31	12.0	-	12	-	
159+14.48	98.0	RT	2	IL 31	-	-	18	-	
160+32.20	68.1	RT	1	IL 31	5.0	5	-	-	
160+34.30	70.6	RT	1	IL 31	5.0	5	-	-	
160+62.40	43.6	LT	2	IL 31	-	-	12	16	
160+97.17	25.2	LT	1	IL 31	21.0	-	-	21	
161+04.40	40.0	RT	3	IL 31	-	5	-	-	
161+23.30	45.9	RT	2	IL 31	-	5	15	-	
161+39.60	41.7	RT	2	IL 31	-	-	7	16	
162+47.30	48.9	RT	1	IL 31	15.0	-	15	-	
162+75.41	67.0	RT	1	IL 31	13.0	-	13	-	
164+09.34	38.3	LT	1	IL 31	5.0	5	-	-	
167+50.00	9.0	LT	-	IL 31	-	-	-	-	0.36
168+50.00	43.5	RT	-	IL 31	-	-	-	-	0.76
172+75.00	13.6	LT	-	IL 31	-	-	-	-	0.15
173+66.40	54.1	RT	1	IL 31	5.0	5	-	-	
173+76.24	63.7	RT	1	IL 31	6.0	-	6	-	

TREE REMOVAL									
STA	OFFSET	LT/RT	NO. OF STEMS	STREET	SIZE	TREE REMOVAL (3-6 UNITS DIAMETER)	TREE REMOVAL (6 TO 15 UNITS DIAMETER)	TREE REMOVAL (OVER 15 UNITS DIAMETER)	TREE REMOVAL, ACRES
						TREE REMOVAL (SPECIAL)	UNIT	UNIT	UNIT
173+78.34	49.0	RT	1	IL 31	6.0	-	6	-	
173+87.40	46.8	RT	1	IL 31	14.0	-	14	-	
174+16.16	61.5	RT	1	IL 31	6.0	-	6	-	
174+39.58	59.9	RT	1	IL 31	8.0	-	8	-	
175+50.00	18.5	LT	-	IL 31	-	-	-	-	0.21
176+31.10	51.5	RT	1	IL 31	32.0	-	-	32	
176+64.52	78.5	RT	1	IL 31	34.0	-	-	34	
176+67.98	788.0	RT	1	IL 31	24.0	-	-	24	
176+74.99	79.0	RT	1	IL 31	7.0	-	7	-	
176+90.71	83.5	RT	1	IL 31	6.0	-	6	-	
176+92.95	79.9	RT	1	IL 31	7.0	-	7	-	
177+01.30	57.5	RT	2	IL 31	-	10	-	-	
177+03.22	84.4	RT	2	IL 31	-	-	16	-	
177+14.30	51.5	LT	1	IL 31	24.0	-	-	24	
177+35.85	63.9	RT	3	IL 31	-	-	24	-	
177+36.92	70.4	RT	1	IL 31	52.0	-	-	52	
177+41.20	24.6	LT	2	IL 31	-	5	14	-	
177+42.30	64.8	RT	1	IL 31	5.0	5	-	-	
177+43.04	67.3	RT	2	IL 31	-	10	-	-	
177+50.83	96.0	RT	1	IL 31	5.0	5	-	-	
179+02.63	23.8	LT	1	IL 31	9.0	-	9	-	
179+96.10	23.0	LT	5	IL 31	-	20	6	-	
180+08.24	22.9	LT	2	IL 31	-	-	12	-	
180+31.52	14.1	LT	2	IL 31	-	10	-	-	
180+32.72	18.1	LT	1	IL 31	5.0	5	-	-	
180+37.27	18.3	LT	3	IL 31	-	10	6	-	
180+44.39	21.0	LT	4	IL 31	-	20	-	-	
180+58.88	19.5	LT	3	IL 31	-	10	6	-	
180+68.91	20.3	LT	1	IL 31	6.0	-	6	-	
180+72.36	15.0	LT	3	IL 31	-	15	-	-	
180+74.13	16.4	LT	2	IL 31	-	10	-	-	
180+79.59	24.8	LT	2	IL 31	-	10	-	-	
180+96.55	18.4	LT	3	IL 31	-	15	-	-	
180+98.73	14.5	LT	3	IL 31	-	15	-	-	
180+98.83	17.4	LT	1	IL 31	8.0	-	8	-	
181+03.05	15.5	LT	1	IL 31	7.0	-	7	-	
181+22.54	18.8	LT	1	IL 31	6.0	-	6	-	
184+00.00	62.9	RT	-	IL 31	-	-	-	-	2.15
187+57.37	26.7	LT	1	IL 31	5.0	5	-	-	
187+62.28	52.6	RT	1	IL 31	27.0	-	-	27	
187+99.72	25.6	LT	1	IL 31	6.0	-	6	-	
188+26.08	29.0	LT	1	IL 31	5.0	5	-	-	
189+95.91	31.0	LT	2	IL 31	-	9	-	-	
190+85.28	30.7	LT	3	IL 31	-	10	9	-	
190+87.78	31.2	LT	4	IL 31	-	14	6	-	
191+04.92	24.9	LT	2	IL 31	-	5	6	-	
191+16.26	32.0	LT	3	IL 31	-	4	12	-	
191+87.86	29.5	LT	3	IL 31	-	4	14	-	
192+33.90	27.7	LT	1	IL 31	12.0	-	12	-	
195+00.00	34.8	RT	-	IL 31	-	-	-	-	1.86
200+12.30	56.0	LT	1	IL 31	7.0	-	7	-	
200+12.91	105.1	LT	1	IL 31	17.0	-	-	17	
200+15.00	55.6	LT	2	IL 31	-	5	7	-	
200+16.96	91.3	LT	1	IL 31	10.0	-	10	-	
200+18.07	99.2	LT	1	IL 31	10.0	-	10	-	
200+28.61	102.6	LT	2	IL 31	-	-	16	-	
200+31.40	55.1	LT	1	IL 31	7.0	-	7	-	
200+33.10	55.8	LT	1	IL 31	42.0	-	-	42	
200+39.80	46.2	LT	11	IL 31	-	25	39	-	
202+00.00	30.0	RT	-	IL 31	-	-	-	-	0.19
202+00.00	51.2	LT	-	IL 31	-	-	-	-	0.45

MODEL: Default  
 FILE NAME: W:\mfr\paw116001\UCS\_def\work\48126261033393\_25162X14-SHT-SCHEDULE-TREE.dgn



USER NAME = eboelter	DESIGNED - EJB	REVISED - 10/23/24
PLOT SCALE = 100:1	DRAWN - BAW	REVISED -
PLOT DATE = 24-OCT-2024	CHECKED - KE	REVISED -
	DATE - 08/12/2024	REVISED -

**STATE OF ILLINOIS  
DEPARTMENT OF TRANSPORTATION**

**ROADWAY SCHEDULE OF QUANTITIES  
ILLINOIS ROUTE 31**

SCALE: NTS      SHEET 1 OF 6 SHEETS      STA.      TO STA.

F.A.P. RTE.	SECTION	COUNTY	TOTAL SHEETS	SHEET NO.
336A	2024-989-ATR	MC HENRY	72	4
CONTRACT NO.			62X14	
ILLINOIS		FED. AID PROJECT		

1

**1** REVISED ENTIRE SHEET 10/28/2024

TREE REMOVAL									
STA	OFFSET	LT/RT	NO. OF STEMS	STREET	SIZE	TREE REMOVAL (3-6 UNITS DIAMETER) TREE REMOVAL (SPECIAL)	TREE REMOVAL (6 TO 15 UNITS DIAMETER)	TREE REMOVAL (OVER 15 UNITS DIAMETER)	TREE REMOVAL, ACRES
					INCH	UNIT	UNIT	UNIT	ACRES
203+98.49	82.3	LT	1	IL 31	14.0	-	14	-	
204+06.68	99.3	LT	1	IL 31	5.0	5	-	-	
204+07.54	92.8	LT	1	IL 31	6.0	-	6	-	
204+11.62	92.5	LT	1	IL 31	9.0	-	9	-	
204+16.75	88.9	LT	1	IL 31	7.0	-	7	-	
205+85.26	98.3	LT	1	IL 31	9.0	-	9	-	
205+87.13	83.6	LT	1	IL 31	5.0	5	-	-	
205+85.78	99.4	LT	1	IL 31	7.0	-	7	-	
206+06.95	95.0	LT	1	IL 31	20.0	-	-	20	
206+08.35	90.6	LT	1	IL 31	26.0	-	-	26	
206+08.68	96.8	LT	1	IL 31	14.0	-	14	-	
206+93.07	25.3	RT	1	IL 31	5.0	5	-	-	
208+02.79	15.8	RT	1	IL 31	24.0	-	-	24	
208+75.00	11.5	RT	-	IL 31	-	-	-	-	0.03
211+95.35	62.2	LT	3	IL 31	-	5	14	17	
211+98.85	56.3	LT	1	IL 31	6.0	-	6	-	
211+99.95	52.1	LT	1	IL 31	6.0	-	6	-	
212+00.21	12.6	RT	3	IL 31	-	5	13	-	
212+00.66	66.2	LT	1	IL 31	6.0	-	6	-	
212+03.26	6.7	RT	2	IL 31	-	-	15	-	
212+04.79	51.4	LT	3	IL 31	-	6	6	-	
212+04.89	55.4	LT	1	IL 31	5.0	5	-	-	
212+07.10	52.4	LT	3	IL 31	-	8	6	-	
212+30.39	66.6	LT	1	IL 31	5.0	5	-	-	
212+37.57	62.9	LT	4	IL 31	-	19	-	-	
212+39.11	58.0	LT	1	IL 31	5.0	5	-	-	
212+42.71	59.6	LT	1	IL 31	6.0	-	6	-	
212+43.01	60.7	LT	1	IL 31	6.0	-	6	-	
212+44.42	63.7	LT	5	IL 31	-	-	30	-	
212+47.01	57.8	LT	1	IL 31	5.0	5	-	-	
215+46.54	11.0	RT	1	IL 31	5.0	5	-	-	
216+49.90	6.2	RT	1	IL 31	6.0	-	6	-	
216+65.30	9.6	RT	1	IL 31	5.0	5	-	-	
216+83.81	10.4	RT	1	IL 31	5.0	5	-	-	
216+87.55	10.6	RT	1	IL 31	5.0	5	-	-	
216+90.82	10.6	RT	2	IL 31	-	5	6	-	
218+30.11	63.5	LT	1	IL 31	10.0	-	10	-	
219+41.87	89.2	RT	2	IL 31	-	5	7	-	
219+60.91	82.4	RT	1	IL 31	18.0	-	-	18	
220+00.00	3.6	RT	-	IL 31	-	-	-	-	0.89
220+15.40	121.9	RT	2	IL 31	-	5	8	-	
221+51.51	67.4	RT	4	IL 31	-	5	23	-	
221+52.27	71.5	RT	1	IL 31	5.0	5	-	-	
221+52.74	70.0	RT	1	IL 31	5.0	5	-	-	
223+35.61	92.0	RT	3	IL 31	-	15	-	-	
224+36.18	82.9	RT	7	IL 31	-	10	48	-	
225+00.00	48.2	LT	-	IL 31	-	-	-	-	0.07
226+54.95	103.8	RT	1	IL 31	6.0	-	6	-	
226+60.13	101.4	RT	1	IL 31	3.0	3	-	-	
226+64.39	100.8	RT	1	IL 31	3.0	3	-	-	
226+71.37	101.0	RT	1	IL 31	3.0	3	-	-	
226+76.95	100.7	RT	1	IL 31	3.0	3	-	-	
226+83.09	100.9	RT	1	IL 31	3.0	3	-	-	
226+89.67	101.3	RT	1	IL 31	3.0	3	-	-	
226+95.48	100.8	RT	1	IL 31	3.0	3	-	-	
227+01.23	100.5	RT	1	IL 31	3.0	3	-	-	
227+05.94	100.9	RT	1	IL 31	3.0	3	-	-	
227+11.95	100.0	RT	1	IL 31	3.0	3	-	-	
227+17.95	100.5	RT	1	IL 31	3.0	3	-	-	
227+23.92	101.1	RT	1	IL 31	3.0	3	-	-	
227+30.01	100.1	RT	1	IL 31	3.0	3	-	-	

TREE REMOVAL									
STA	OFFSET	LT/RT	NO. OF STEMS	STREET	SIZE	TREE REMOVAL (3-6 UNITS DIAMETER) TREE REMOVAL (SPECIAL)	TREE REMOVAL (6 TO 15 UNITS DIAMETER)	TREE REMOVAL (OVER 15 UNITS DIAMETER)	TREE REMOVAL, ACRES
					INCH	UNIT	UNIT	UNIT	ACRES
227+33.76	52.2	LT	1	IL 31	6.0	-	6	-	
227+35.69	100.2	RT	1	IL 31	3.0	3	-	-	
227+41.98	100.5	RT	1	IL 31	3.0	3	-	-	
227+47.86	100.3	RT	1	IL 31	3.0	3	-	-	
227+54.04	100.4	RT	1	IL 31	3.0	3	-	-	
227+60.07	100.3	RT	1	IL 31	3.0	3	-	-	
227+66.10	100.7	RT	1	IL 31	3.0	3	-	-	
227+75.01	103.3	RT	1	IL 31	17.0	-	-	17	
227+82.53	103.4	RT	1	IL 31	10.0	-	10	-	
227+84.15	101.6	RT	1	IL 31	7.0	-	7	-	
227+89.03	55.5	LT	1	IL 31	5.0	5	-	-	
227+90.43	57.7	LT	1	IL 31	5.0	5	-	-	
229+00.00	58.9	LT	-	IL 31	-	-	-	-	0.6
232+00.00	7.3	RT	-	IL 31	-	-	-	-	1.79
232+17.67	105.4	LT	1	IL 31	10.0	-	10	-	
232+19.12	58.5	LT	1	IL 31	7.0	-	7	-	
232+39.96	53.1	LT	4	IL 31	-	-	26	-	
234+00.00	43.2	LT	-	IL 31	-	-	-	-	0.15
235+90.78	82.9	LT	1	IL 31	23.0	-	-	23	
236+43.39	87.0	LT	1	IL 31	14.0	-	-	-	
236+57.56	87.9	LT	1	IL 31	17.0	-	-	17	
236+71.02	77.7	LT	1	IL 31	12.0	-	12	-	
236+92.30	83.1	LT	1	IL 31	18.0	-	-	18	
237+05.25	84.8	LT	1	IL 31	16.0	-	-	16	
237+09.79	72.6	LT	1	IL 31	14.0	-	14	-	
237+19.09	77.4	LT	1	IL 31	20.0	-	-	20	
237+28.89	85.2	LT	1	IL 31	13.0	-	13	-	
237+42.83	77.8	LT	4	IL 31	-	-	39	-	
237+43.25	79.1	LT	4	IL 31	-	20	-	-	
237+51.89	89.8	LT	1	IL 31	13.0	-	-	-	
237+59.34	79.7	LT	4	IL 31	-	10	21	-	
237+76.41	86.9	LT	4	IL 31	-	15	6	-	
237+90.48	76.4	LT	4	IL 31	-	15	7	-	
238+03.37	71.9	LT	1	IL 31	20.0	-	-	20	
238+07.28	84.3	LT	1	IL 31	12.0	-	-	-	
238+22.95	79.6	LT	1	IL 31	17.0	-	-	17	
238+33.37	86.2	LT	1	IL 31	19.0	-	-	19	
238+43.98	76.5	LT	1	IL 31	5.0	5	-	-	
238+49.27	79.0	LT	2	IL 31	-	-	12	-	
238+52.32	79.3	LT	3	IL 31	-	10	6	-	
238+65.00	84.7	LT	2	IL 31	-	10	-	-	
238+67.29	85.8	LT	3	IL 31	-	-	19	-	
238+80.34	77.0	LT	6	IL 31	-	10	28	-	
238+91.64	85.1	LT	5	IL 31	-	-	37	-	
239+09.83	82.7	LT	1	IL 31	20.0	-	-	20	
239+25.19	97.9	LT	1	IL 31	19.0	-	-	19	
239+26.44	112.5	LT	1	IL 31	20.0	-	-	-	
239+72.84	96.5	RT	1	IL 31	10.0	-	10	-	
239+73.27	78.3	RT	1	IL 31	9.0	-	9	-	
239+73.48	49.8	RT	1	IL 31	9.0	-	9	-	
239+73.98	75.9	RT	1	IL 31	10.0	-	10	-	
239+74.18	60.1	RT	1	IL 31	8.0	-	8	-	
239+74.67	74.0	RT	1	IL 31	8.0	-	8	-	
244+07.26	44.0	RT	1	IL 31	5.0	5	-	-	
244+08.74	41.4	RT	1	IL 31	5.0	5	-	-	
244+79.75	44.0	RT	1	IL 31	5.0	5	-	-	
244+85.87	45.5	RT	1	IL 31	5.0	5	-	-	
244+99.87	42.7	RT	1	IL 31	5.0	5	-	-	
245+04.19	43.0	RT	1	IL 31	5.0	5	-	-	
245+04.89	40.1	RT	1	IL 31	10.0	-	10	-	
245+21.72	34.3	RT	1	IL 31	5.0	5	-	-	

MODEL: Default  
 FILE NAME: W:\mchd\paw11\c01\CS\_off\work\482626\33393\_25\62X14-SHT-SCHEDULE-TREE.dgn



USER NAME = eboelter  
 PLOT SCALE = 100:1  
 PLOT DATE = 24-OCT-2024

DESIGNED - EJB  
 DRAWN - BAW  
 CHECKED - KE  
 DATE - 08/12/2024

REVISED - 10/23/24  
 REVISED -  
 REVISED -  
 REVISED -

**STATE OF ILLINOIS  
 DEPARTMENT OF TRANSPORTATION**

**ROADWAY SCHEDULE OF QUANTITIES  
 ILLINOIS ROUTE 31**

SCALE: NTS      SHEET 2      OF 6      SHEETS      STA.      TO STA.

1 REVISED ENTIRE SHEET 10/28/2024		F.A.P. RTE.	SECTION	COUNTY	TOTAL SHEETS	SHEET NO.
336A	2024-989-ATR		MC HENRY	72	5	
				CONTRACT NO. 62X14		
		ILLINOIS FED. AID PROJECT				

TREE REMOVAL									
STA	OFFSET	LT/RT	NO. OF STEMS	STREET	SIZE	TREE REMOVAL (3-6 UNITS DIAMETER)	TREE REMOVAL (6 TO 15 UNITS DIAMETER)	TREE REMOVAL (OVER 15 UNITS DIAMETER)	TREE REMOVAL, ACRES
						TREE REMOVAL (SPECIAL)	UNIT	UNIT	UNIT
245+82.99	47.3	RT	1	IL 31	5.0	5	-	-	
246+02.80	41.9	RT	1	IL 31	20.0	-	-	20	
246+96.35	45.5	RT	1	IL 31	5.0	5	-	-	
248+73.07	42.1	RT	1	IL 31	5.0	5	-	-	
248+90.66	42.9	RT	1	IL 31	5.0	5	-	-	
249+15.35	44.6	RT	1	IL 31	5.0	5	-	-	
249+42.51	46.6	RT	1	IL 31	5.0	5	-	-	
249+64.40	43.4	RT	1	IL 31	5.0	5	-	-	
251+00.00	30.1	RT	-	IL 31	-	-	-	-	0.05
251+71.72	80.5	LT	3	IL 31	-	-	22	16	
257+38.23	37.7	RT	4	IL 31	-	-	39	20	
257+85.15	39.8	RT	1	IL 31	8.0	-	8	-	
258+59.39	40.5	RT	1	IL 31	16.0	-	-	16	
258+87.48	42.2	RT	2	IL 31	-	-	24	-	
260+84.27	38.2	LT	1	IL 31	35.0	-	-	35	
288+56.25	0.4	LT	10	IL 31	-	10	64	-	
288+73.48	0.2	LT	3	IL 31	-	-	27	3	
288+75.77	0.7	LT	3	IL 31	-	-	24	-	
288+79.72	0.6	LT	2	IL 31	-	-	20	-	
288+80.72	1.2	RT	6	IL 31	-	-	56	-	
289+64.95	0.6	RT	1	IL 31	5.0	5	-	-	
289+70.39	2.4	RT	1	IL 31	5.0	5	-	-	
289+83.88	0.3	LT	2	IL 31	-	10	-	-	
289+90.88	3.4	RT	1	IL 31	5.0	5	-	-	
289+93.40	0.9	RT	1	IL 31	5.0	5	-	-	
292+26.47	0.8	RT	1	IL 31	5.0	5	-	-	
292+33.69	1.9	RT	1	IL 31	5.0	5	-	-	
292+50.00	1.0	LT	-	IL 31	-	-	-	-	0.08
299+00.00	56.8	RT	-	IL 31	-	-	-	-	0.07
299+18.70	42.0	LT	1	IL 31	38.0	-	-	38	
299+39.26	42.4	LT	1	IL 31	35.0	-	-	35	
299+45.05	19.0	LT	7	IL 31	-	10	34	-	
300+24.72	47.5	LT	1	IL 31	18.0	-	-	18	
300+43.47	48.9	LT	1	IL 31	22.0	-	-	22	
300+49.79	69.2	LT	1	IL 31	24.0	-	-	24	
300+52.28	57.8	LT	1	IL 31	16.0	-	-	16	
300+52.79	63.5	LT	1	IL 31	18.0	-	-	18	
300+54.91	46.3	LT	1	IL 31	16.0	-	-	16	
301+11.03	17.4	LT	1	IL 31	5.0	5	-	-	
301+12.57	16.9	LT	1	IL 31	6.0	-	6	-	
301+13.30	17.1	LT	1	IL 31	6.0	-	6	-	
301+17.32	17.0	LT	1	IL 31	6.0	-	6	-	
301+20.41	17.2	LT	1	IL 31	6.0	-	6	-	
301+31.96	19.4	LT	1	IL 31	5.0	5	-	-	
301+32.48	17.9	LT	1	IL 31	6.0	-	6	-	
301+58.64	17.8	LT	1	IL 31	5.0	5	-	-	
301+62.80	20.9	LT	1	IL 31	6.0	-	6	-	
301+74.57	18.0	LT	1	IL 31	6.0	-	6	-	
301+80.96	24.7	LT	5	IL 31	-	15	12	-	
302+08.64	22.6	LT	2	IL 31	-	5	6	-	
305+46.34	76.1	LT	1	IL 31	17.0	-	-	17	
305+51.39	86.1	LT	1	IL 31	8.0	-	8	-	
305+52.96	75.6	LT	2	IL 31	-	-	13	-	
305+70.68	86.9	LT	1	IL 31	5.0	5	-	-	
308+26.58	56.2	LT	3	IL 31	-	-	35	-	
308+43.18	52.1	LT	1	IL 31	22.0	-	-	22	
309+00.95	66.2	LT	1	IL 31	5.0	5	-	-	
309+04.54	66.1	LT	1	IL 31	5.0	5	-	-	
310+75.00	35.4	RT	-	IL 31	-	-	-	-	0.05
312+50.00	36.9	RT	-	IL 31	-	-	-	-	0.56
315+10.33	50.6	RT	2	IL 31	-	5	6	-	

TREE REMOVAL									
STA	OFFSET	LT/RT	NO. OF STEMS	STREET	SIZE	TREE REMOVAL (3-6 UNITS DIAMETER)	TREE REMOVAL (6 TO 15 UNITS DIAMETER)	TREE REMOVAL (OVER 15 UNITS DIAMETER)	TREE REMOVAL, ACRES
						TREE REMOVAL (SPECIAL)	UNIT	UNIT	UNIT
315+26.12	53.7	RT	3	IL 31	-	27	-	-	
320+44.15	86.0	RT	1	IL 31	5.0	5	-	-	
320+44.20	88.4	RT	1	IL 31	10.0	-	10	-	
320+44.80	89.6	RT	1	IL 31	6.0	-	6	-	
320+53.68	104.0	RT	2	IL 31	-	-	14	-	
320+74.79	104.9	RT	1	IL 31	5.0	5	-	-	
320+78.37	103.1	RT	1	IL 31	5.0	5	-	-	
320+82.29	104.0	RT	1	IL 31	5.0	5	-	-	
322+84.69	100.5	RT	1	IL 31	5.0	5	-	-	
323+33.91	103.6	RT	1	IL 31	5.0	5	-	-	
323+51.17	69.8	RT	8	IL 31	-	15	38	-	
323+78.74	80.9	RT	2	IL 31	-	-	-	32	
325+97.42	56.8	LT	1	IL 31	14.0	-	14	-	
326+69.84	68.6	RT	1	IL 31	14.0	-	14	-	
327+43.64	66.2	RT	1	IL 31	14.0	-	14	-	
327+75.52	67.8	RT	1	IL 31	14.0	-	14	-	
329+26.86	76.6	RT	1	IL 31	10.0	-	10	-	
329+87.59	76.6	RT	1	IL 31	10.0	-	10	-	
331+61.76	66.0	LT	1	IL 31	16.0	-	-	16	
331+67.53	59.3	LT	4	IL 31	-	-	30	16	
331+80.14	73.2	RT	1	IL 31	10.0	-	10	-	
332+20.24	74.9	RT	1	IL 31	10.0	-	10	-	
332+78.20	76.3	RT	1	IL 31	10.0	-	10	-	
333+47.79	74.2	RT	1	IL 31	10.0	-	10	-	
333+91.60	71.9	RT	1	IL 31	10.0	-	10	-	
334+27.43	74.0	RT	1	IL 31	10.0	-	10	-	
334+41.71	37.5	RT	1	IL 31	7.0	-	7	-	
334+57.54	37.0	RT	2	IL 31	-	5	6	-	
335+00.00	45.9	RT	-	IL 31	-	-	-	-	0.03
338+77.71	75.1	RT	1	IL 31	5.0	5	-	-	
338+78.61	76.3	RT	1	IL 31	7.0	-	7	-	
338+78.90	75.0	RT	1	IL 31	9.0	-	9	-	
338+80.66	71.2	RT	1	IL 31	5.0	5	-	-	
338+83.82	71.2	RT	1	IL 31	7.0	-	7	-	
338+85.02	71.2	RT	4	IL 31	-	5	21	-	
339+32.87	64.2	RT	1	IL 31	16.0	-	-	16	
339+39.77	48.8	RT	1	IL 31	16.0	-	-	16	
339+36.79	75.4	RT	1	IL 31	16.0	-	-	16	
339+44.29	66.2	RT	1	IL 31	19.0	-	-	19	
340+01.54	56.8	RT	1	IL 31	17.0	-	-	17	
340+32.69	59.4	RT	1	IL 31	18.0	-	-	18	
341+21.16	68.9	RT	1	IL 31	19.0	-	-	19	
353+84.66	80.8	RT	1	IL 31	6.0	-	6	-	
354+28.73	42.7	RT	1	IL 31	31.0	-	-	31	
354+83.68	74.8	RT	1	IL 31	9.0	-	9	-	
358+02.95	45.9	RT	2	IL 31	-	-	-	53	
358+20.29	70.7	RT	1	IL 31	8.0	-	8	-	
358+22.60	75.5	RT	1	IL 31	8.0	-	8	-	
364+31.43	60.2	LT	1	IL 31	15.0	-	15	-	
364+50.18	53.4	RT	1	IL 31	8.0	-	8	-	
365+00.42	56.6	LT	1	IL 31	15.0	-	15	-	
365+50.74	59.5	LT	1	IL 31	14.0	-	14	-	
366+00.89	59.8	LT	1	IL 31	14.0	-	14	-	
366+46.06	61.6	LT	1	IL 31	16.0	-	-	16	
366+50.00	29.7	RT	-	IL 31	-	-	-	-	0.38
368+60.47	37.5	RT	2	IL 31	-	-	18	-	
368+68.27	48.8	RT	1	IL 31	8.0	-	8	-	
368+68.51	42.2	RT	1	IL 31	14.0	-	14	-	
368+75.56	41.1	RT	1	IL 31	8.0	-	8	-	
368+75.80	42.3	RT	1	IL 31	10.0	-	10	-	
370+50.00	35.9	RT	-	IL 31	-	-	-	-	0.38

1 REVISED ENTIRE SHEET 10/28/2024

MODEL: Default  
FILE NAME: W:\mch\paw11c01\UCS.pdf\_worx\_dbr24\24032393\_25062X14-SHT-SCHEDULE-TREE.dgn



USER NAME = eboelter	DESIGNED - EJB	REVISED - 10/23/24
PLOT SCALE = 100:1	DRAWN - BAW	REVISED -
PLOT DATE = 24-OCT-2024	CHECKED - KE	REVISED -
	DATE - 08/12/2024	REVISED -

STATE OF ILLINOIS  
DEPARTMENT OF TRANSPORTATION

ROADWAY SCHEDULE OF QUANTITIES  
ILLINOIS ROUTE 31

SCALE: NTS SHEET 3 OF 6 SHEETS STA. TO STA.

F.A.P. RTE. 336A	SECTION 2024-989-ATR	COUNTY MCHENRY	TOTAL SHEETS 72	SHEET NO. 6
CONTRACT NO. 62X14			ILLINOIS FED. AID PROJECT	

TREE REMOVAL									
STA	OFFSET	LT/RT	NO. OF STEMS	STREET	SIZE	TREE REMOVAL (3-6 UNITS DIAMETER) TREE REMOVAL (SPECIAL)	TREE REMOVAL (6 TO 15 UNITS DIAMETER)	TREE REMOVAL (OVER 15 UNITS DIAMETER)	TREE REMOVAL, ACRES
					INCH	UNIT	UNIT	UNIT	ACRES
370+79.86	100.4	LT	1	IL 31	20.0	-	-	20	
371+05.37	98.2	LT	1	IL 31	21.0	-	-	21	
371+54.51	91.7	LT	1	IL 31	19.0	-	-	19	
372+50.00	53.0	LT	-	IL 31	-	-	-	-	0.09
373+08.59	52.7	LT	1	IL 31	9.0	-	9	-	
373+36.76	29.1	RT	1	IL 31	30.0	-	-	30	
373+35.18	56.4	LT	1	IL 31	9.0	-	9	-	
373+48.15	68.7	RT	1	IL 31	10.0	-	10	-	
373+49.93	66.0	RT	1	IL 31	9.0	-	9	-	
373+50.71	61.3	LT	4	IL 31	-	-	42	-	
373+53.36	50.5	RT	1	IL 31	8.0	-	8	-	
373+54.44	55.6	RT	1	IL 31	8.0	-	8	-	
373+55.78	46.9	RT	1	IL 31	12.0	-	12	-	
373+58.81	54.6	RT	1	IL 31	11.0	-	11	-	
373+62.09	64.8	RT	1	IL 31	20.0	-	-	20	
373+63.53	60.2	RT	1	IL 31	8.0	-	8	-	
373+68.40	65.7	RT	1	IL 31	8.0	-	8	-	
373+71.02	66.6	RT	1	IL 31	8.0	-	8	-	
374+46.03	69.5	LT	3	IL 31	-	-	19	16	
375+83.00	87.0	RT	1	IL 31	7.0	-	7	-	
376+09.44	70.8	RT	1	IL 31	9.0	-	9	-	
376+15.92	59.5	RT	1	IL 31	7.0	-	7	-	
376+16.82	54.7	RT	1	IL 31	7.0	-	7	-	
376+19.17	59.1	RT	1	IL 31	12.0	-	12	-	
376+27.76	65.4	RT	1	IL 31	8.0	-	8	-	
376+98.76	86.4	LT	1	IL 31	27.0	-	-	27	
377+73.95	83.6	LT	1	IL 31	30.0	-	-	30	
378+08.02	53.1	RT	1	IL 31	12.0	-	12	-	
378+13.02	64.9	RT	1	IL 31	14.0	-	14	-	
378+27.88	61.9	RT	1	IL 31	12.0	-	12	-	
379+28.08	76.5	LT	1	IL 31	26.0	-	-	26	
379+96.50	82.1	LT	1	IL 31	28.0	-	-	28	
415+58.50	48.4	RT	3	IL 31	-	15	-	-	
415+65.04	48.0	RT	3	IL 31	-	15	-	-	
415+68.28	48.0	RT	3	IL 31	-	15	-	-	
415+71.41	47.9	RT	3	IL 31	-	15	-	-	
415+76.89	48.6	RT	3	IL 31	-	15	-	-	
415+80.36	48.5	RT	3	IL 31	-	15	-	-	
415+83.35	48.4	RT	3	IL 31	-	15	-	-	
415+86.03	48.3	RT	3	IL 31	-	15	-	-	
415+89.16	48.0	RT	3	IL 31	-	15	-	-	
415+91.81	48.4	RT	3	IL 31	-	15	-	-	
415+94.99	47.9	RT	3	IL 31	-	15	-	-	
415+98.26	47.6	RT	3	IL 31	-	15	-	-	
416+01.55	48.2	RT	3	IL 31	-	15	-	-	
416+09.50	49.9	RT	1	IL 31	21	-	-	21	
416+18.92	47.8	RT	3	IL 31	-	15	-	-	
416+22.13	47.8	RT	3	IL 31	-	15	-	-	
416+28.28	48.1	RT	3	IL 31	-	15	-	-	
416+31.37	48.3	RT	3	IL 31	-	15	-	-	
416+34.14	47.9	RT	3	IL 31	-	15	-	-	
416+40.68	47.9	RT	3	IL 31	-	15	-	-	
416+43.79	47.8	RT	3	IL 31	-	15	-	-	
416+47.18	47.6	RT	3	IL 31	-	15	-	-	
416+53.43	47.7	RT	3	IL 31	-	15	-	-	
416+56.63	47.8	RT	3	IL 31	-	15	-	-	
416+60.82	48.8	RT	3	IL 31	-	15	-	-	
417+13.20	58.0	RT	1	IL 31	19	-	-	19	
417+53.57	57.6	RT	1	IL 31	17	-	-	17	
418+11.89	43.6	RT	7	IL 31	-	10	36	-	
422+00.00	47.8	RT	-	IL 31	-	-	-	-	0.89

TREE REMOVAL									
STA	OFFSET	LT/RT	NO. OF STEMS	STREET	SIZE	TREE REMOVAL (3-6 UNITS DIAMETER) TREE REMOVAL (SPECIAL)	TREE REMOVAL (6 TO 15 UNITS DIAMETER)	TREE REMOVAL (OVER 15 UNITS DIAMETER)	TREE REMOVAL, ACRES
					INCH	UNIT	UNIT	UNIT	ACRES
424+50.00	57.3	LT	-	IL 31	-	-	-	-	0.09
425+91.62	42.8	LT	4	IL 31	-	9	13	-	
426+08.10	44.8	LT	4	IL 31	-	20	-	-	
426+12.92	38.6	LT	4	IL 31	-	20	-	-	
426+14.61	44.8	LT	4	IL 31	-	20	-	-	
426+32.58	47.0	LT	1	IL 31	19.0	-	-	19	
427+00.79	55.0	RT	1	IL 31	18.0	-	-	18	
427+50.00	35.8	RT	-	IL 31	-	-	-	-	0.06
427+80.37	49.5	RT	3	IL 31	-	-	-	78	
427+81.92	76.8	77	1	IL 31	5.0	5	-	-	
427+85.49	43.3	RT	3	IL 31	-	-	-	84	
428+28.74	36.1	RT	1	IL 31	19.0	-	-	19	
428+43.89	56.4	RT	1	IL 31	6.0	-	6	-	
428+69.29	37.2	RT	1	IL 31	19.0	-	-	19	
428+81.83	58.3	RT	1	IL 31	6.0	-	6	-	
429+04.13	52.3	RT	1	IL 31	6.0	-	6	-	
429+58.57	52.4	RT	1	IL 31	6.0	-	6	-	
429+74.59	72.1	RT	1	IL 31	6.0	-	6	-	
431+59.88	51.0	RT	1	IL 31	9.0	-	9	-	
431+77.78	60.3	RT	1	IL 31	25.0	-	-	25	
431+90.27	62.2	RT	2	IL 31	-	-	-	43	
432+13.53	92.9	RT	1	IL 31	30.0	-	-	30	
432+33.54	57.7	RT	1	IL 31	21.0	-	-	21	
432+47.04	57.7	RT	1	IL 31	18.0	-	-	18	
432+65.15	56.6	RT	1	IL 31	23.0	-	-	23	
432+87.88	55.9	RT	1	IL 31	18.0	-	-	18	
434+84.89	46.6	LT	1	IL 31	6.0	-	6	-	
434+88.33	54.0	LT	1	IL 31	5.0	5	-	-	
434+89.92	53.3	LT	1	IL 31	4.0	4	-	-	
434+97.14	65.3	RT	1	IL 31	6.0	-	6	-	
434+98.56	67.5	RT	1	IL 31	6.0	-	6	-	
435+00.34	74.8	RT	1	IL 31	13.0	-	13	-	
435+01.17	56.7	RT	1	IL 31	12.0	-	12	-	
436+40.99	40.5	LT	1	IL 31	5.0	5	-	-	
436+62.42	37.4	LT	1	IL 31	7.0	-	7	-	
437+40.25	49.3	LT	1	IL 31	24.0	-	-	24	
438+09.36	50.9	RT	1	IL 31	20.0	-	-	20	
438+09.77	43.2	RT	1	IL 31	14.0	-	14	-	
438+14.03	57.2	RT	1	IL 31	8.0	-	8	-	
438+15.14	47.6	RT	1	IL 31	11.0	-	11	-	
438+72.94	56.8	RT	1	IL 31	20.0	-	-	20	
438+81.26	52.0	RT	1	IL 31	14.0	-	14	-	
438+91.55	56.6	RT	1	IL 31	22.0	-	-	22	
439+12.59	56.3	RT	1	IL 31	18.0	-	-	18	
439+32.31	58.2	RT	1	IL 31	22.0	5	-	22	
439+87.41	54.6	LT	1	IL 31	29.0	-	-	29	
440+19.74	45.7	RT	1	IL 31	12.0	-	12	-	
440+26.66	41.3	RT	4	IL 31	-	-	41	-	
440+58.42	44.6	RT	1	IL 31	15.0	-	15	-	
440+67.25	44.7	RT	2	IL 31	-	-	24	-	
440+89.87	44.2	RT	1	IL 31	12.0	-	12	-	
440+92.66	44.7	RT	2	IL 31	-	-	15	16	
441+44.88	71.0	RT	1	IL 31	8.0	-	8	-	
441+61.28	53.5	RT	2	IL 31	-	-	-	41	
441+74.24	40.7	RT	1	IL 31	5.0	5	-	-	
441+77.93	43.5	RT	1	IL 31	5.0	5	-	-	
441+86.39	37.8	RT	3	IL 31	-	15	-	-	
442+10.60	43.6	RT	1	IL 31	15.0	-	15	-	
442+18.63	56.7	RT	1	IL 31	10.0	-	10	-	
442+20.85	52.5	RT	3	IL 31	-	14	-	-	
442+47.59	45.3	RT	2	IL 31	-	-	16	-	

1 REVISD ENTIRE SHEET 10/28/2024

MODEL: Default  
FILE NAME: W:\mtr\paw116001\CS\_def\work\48252\62X14-SHT-SCHEDULE-TREE.dgn



USER NAME = eboelter	DESIGNED - EJB	REVISED - 10/23/24
PLOT SCALE = 100:1	DRAWN - BAW	REVISED -
PLOT DATE = 24-OCT-2024	CHECKED - KE	REVISED -
	DATE - 08/12/2024	REVISED -

STATE OF ILLINOIS  
DEPARTMENT OF TRANSPORTATION

ROADWAY SCHEDULE OF QUANTITIES  
ILLINOIS ROUTE 31

SCALE: NTS SHEET 4 OF 6 SHEETS STA. TO STA.

F.A.P. RTE. 336A	SECTION 2024-989-ATR	COUNTY MC HENRY	TOTAL SHEETS 72	SHEET NO. 7
CONTRACT NO. 62X14			ILLINOIS FED. AID PROJECT	

TREE REMOVAL									
STA	OFFSET	LT/RT	NO. OF STEMS	STREET	SIZE	TREE REMOVAL (3-6 UNITS DIAMETER) TREE REMOVAL (SPECIAL)	TREE REMOVAL (6 TO 15 UNITS DIAMETER)	TREE REMOVAL (OVER 15 UNITS DIAMETER)	TREE REMOVAL, ACRES
					INCH	UNIT	UNIT	UNIT	ACRES
442+52.09	69.7	LT	1	IL 31	14.0	-	14	-	
442+58.86	41.7	RT	2	IL 31	-	-	16	-	
442+77.81	45.3	RT	3	IL 31	-	5	12	-	
443+01.57	78.3	LT	1	IL 31	42.0	-	-	42	
443+04.69	74.8	LT	1	IL 31	42.0	-	-	42	
443+30.47	582.3	LT	1	IL 31	16.0	-	-	16	
443+31.76	465.8	LT	3	IL 31	-	-	26	18	
443+32.01	439.8	LT	1	IL 31	8.0	-	8	-	
443+32.82	497.2	LT	1	IL 31	7.0	-	7	-	
443+38.26	51.2	RT	4	IL 31	-	-	54	-	
443+38.88	81.2	RT	3	IL 31	-	-	22	-	
443+40.14	88.8	RT	4	IL 31	-	-	48	-	
443+87.95	90.2	LT	1	IL 31	8.0	-	8	-	
443+88.76	99.2	RT	1	IL 31	48.0	-	-	48	
443+89.45	51.0	RT	2	IL 31	-	-	12	16	
443+89.97	84.7	LT	1	IL 31	6.0	-	6	-	
444+00.00	46.4	LT	-	IL 31	-	-	-	-	1.14
444+07.93	134.0	RT	1	IL 31	16.0	-	-	16	
444+09.66	129.4	RT	1	IL 31	15.0	-	15	-	
444+14.06	49.9	RT	2	IL 31	-	-	10	24	
444+22.18	186.4	RT	1	IL 31	8.0	-	8	-	
444+28.97	147.6	RT	2	IL 31	-	-	-	34	
444+33.97	125.0	RT	2	IL 31	-	-	24	-	
444+39.58	158.2	RT	1	IL 31	15.0	-	15	-	
444+50.00		RT	-	IL 31	-	-	-	-	0.09
445+56.57	48.4	RT	1	IL 31	23.0	-	-	23	
445+67.60	50.1	RT	1	IL 31	28.0	-	-	28	
445+93.82	45.6	RT	1	IL 31	16.0	-	-	16	
446+06.47	44.5	RT	1	IL 31	12.0	-	12	-	
446+27.28	39.0	RT	1	IL 31	20.0	-	-	20	
446+30.48	58.6	LT	2	IL 31	-	-	17	-	
446+31.89	40.1	RT	1	IL 31	23.0	-	-	23	
446+36.92	40.4	RT	1	IL 31	15.0	-	15	-	
446+42.73	59.7	LT	1	IL 31	6.0	-	6	-	
446+43.61	54.3	LT	3	IL 31	-	-	29	-	
447+30.93	51.0	RT	1	IL 31	20.0	-	-	20	
447+92.99	41.1	RT	1	IL 31	12.0	-	12	-	
448+27.24	43.2	RT	1	IL 31	6.0	-	6	-	
448+30.34	42.0	RT	1	IL 31	8.0	-	8	-	
448+43.60	45.8	RT	3	IL 31	-	-	14	50	
448+62.91	57.3	LT	1	IL 31	5.0	5	-	-	
448+66.94	42.0	RT	1	IL 31	11.0	-	11	-	
448+77.27	56.1	LT	1	IL 31	5.0	5	-	-	
448+92.80	42.1	RT	1	IL 31	11.0	-	11	-	
449+01.01	43.6	RT	1	IL 31	40.0	-	-	40	
449+05.13	42.3	RT	1	IL 31	17.0	-	-	17	
449+12.17	40.5	RT	1	IL 31	10.0	-	10	-	
449+21.55	42.2	RT	1	IL 31	8.0	-	8	-	
449+32.66	43.8	RT	1	IL 31	8.0	-	8	-	
449+33.07	45.2	RT	1	IL 31	11.0	-	11	-	
449+40.13	44.4	RT	1	IL 31	11.0	-	11	-	
449+47.72	48.6	RT	1	IL 31	28.0	-	-	28	
449+59.47	44.0	RT	1	IL 31	11.0	-	11	-	
449+65.98	48.8	RT	1	IL 31	18.0	-	-	18	
451+76.09	50.5	LT	1	IL 31	10.0	-	10	-	
452+37.00	494.0	LT	1	IL 31	8.0	-	8	-	
457+92.51	29.2	LT	1	IL 31	21.0	-	-	21	
458+45.16	32.3	LT	1	IL 31	21.0	-	-	21	
474+86.02	29.4	RT	1	IL 31	10.0	-	10	-	
474+86.39	30.4	RT	1	IL 31	9.0	-	9	-	
474+95.51	31.0	RT	1	IL 31	10.0	-	10	-	

TREE REMOVAL									
STA	OFFSET	LT/RT	NO. OF STEMS	STREET	SIZE	TREE REMOVAL (3-6 UNITS DIAMETER) TREE REMOVAL (SPECIAL)	TREE REMOVAL (6 TO 15 UNITS DIAMETER)	TREE REMOVAL (OVER 15 UNITS DIAMETER)	TREE REMOVAL, ACRES
					INCH	UNIT	UNIT	UNIT	ACRES
474+96.59	32.2	RT	1	IL 31	10.0	-	10	-	
475+03.96	29.6	RT	1	IL 31	11.0	-	11	-	
475+09.67	30.2	RT	1	IL 31	12.0	-	12	-	
476+70.96	63.2	LT	1	IL 31	9.0	-	9	-	
476+88.52	86.6	LT	1	IL 31	8.0	-	8	-	
294+17.34	35.4	RT	1	IL 120	17.0	-	-	17	
295+28.47	33.2	RT	1	IL 120	8.0	-	8	-	
296+74.30	78.3	LT	1	IL 120	7.0	-	7	-	
298+18.04	55.3	RT	1	IL 120	8.0	-	8	-	
298+35.92	59.8	RT	1	IL 120	10.0	-	10	-	
302+29.34	76.9	RT	2	IL 120				39	
302+33.25	83.3	RT	3	IL 120			29		
303+38.99	50.0	LT	1	IL 120	10.0	-	10	-	
303+86.51	49.8	LT	1	IL 120	17.0	-	-	17	
312+00.00	-	RT	-	IL 120	-	-	-	-	2.12
38+95.68	28.9	LT	2	HALF MILE	-	-	-	46	
43+84.40	41.4	RT	1	HALF MILE	5.0	5	-	-	
44+09.15	39.7	RT	1	HALF MILE	10.0	-	10	-	
44+36.10	44.9	RT	1	HALF MILE	5.0	5	-	-	
44+36.53	44.0	RT	1	HALF MILE	5.0	5	-	-	
44+39.64	46.1	RT	1	HALF MILE	5.0	5	-	-	
44+45.27	43.7	RT	1	HALF MILE	5.0	5	-	-	
44+51.31	47.0	RT	1	HALF MILE	9.0	-	9	-	
44+61.27	47.1	RT	1	HALF MILE	5.0	5	-	-	
44+65.43	47.3	RT	1	HALF MILE	6.0	-	6	-	
44+71.62	47.6	RT	1	HALF MILE	6.0	-	6	-	
44+85.10	47.9	RT	1	HALF MILE	5.0	5	-	-	
45+61.31	57.4	RT	1	HALF MILE	5.0	5	-	-	
45+62.59	57.5	RT	1	HALF MILE	8.0	-	8	-	
46+14.60	60.4	RT	2	HALF MILE	-	5	6	-	
46+76.00	61.0	RT	1	HALF MILE	5.0	-	-	-	
15+58.33	33.9	RT	6	PRIME	-	-	47	-	
15+88.43	34.0	RT	6	PRIME	-	5	33	-	
16+06.28	35.2	RT	8	PRIME	-	5	55	-	
16+51.64	33.8	RT	3	PRIME	-	-	22	-	
16+58.12	42.1	RT	8	PRIME	-	-	53	-	
16+62.38	1.0	LT	3	PRIME	-	15	-	-	
17+47.50	0.2	LT	8	PRIME	-	20	26	-	
17+75.26	5.6	LT	1	PRIME	19.0	-	-	19	
17+87.47	36.4	LT	1	PRIME	12.0	-	12	-	
17+89.56	39.1	LT	1	PRIME	14.0	-	14	-	
18+37.55	57.0	LT	1	PRIME	22.0	-	-	22	
18+51.34	3.5	LT	3	PRIME	-	-	20	-	
18+51.74	1.5	RT	3	PRIME	-	-	20	-	
18+56.89	4.2	LT	2	PRIME	-	5	6	-	
18+57.40	1.5	RT	2	PRIME	-	5	6	-	
18+59.82	3.0	LT	3	PRIME	-	5	13	-	
18+60.65	1.3	RT	3	PRIME	-	5	13	-	
11+33.04	31.7	RT	1	ALBANY	17.0	-	-	17	
11+73.60	30.3	RT	1	ALBANY	13.0	-	-	13	
12+00.00	45.5	LT	7	ALBANY	-	25	12	-	
12+31.28	34.3	RT	5	ALBANY	-	15	13	-	
10+43.57	22.9	LT	1	SHAMROCK	8.0	-	8	-	
11+30.63	36.0	RT	1	SHAMROCK	11.0	-	11	-	
11+56.54	17.5	LT	1	SHAMROCK	8.0	-	8	-	
11+64.10	39.2	RT	1	SHAMROCK	14.0	-	14	-	
11+90.09	18.2	LT	1	SHAMROCK	10.0	-	10	-	
11+99.48	36.1	RT	1	SHAMROCK	14.0	-	14	-	
<b>TOTAL</b>						<b>1622</b>	<b>3949</b>	<b>3106</b>	<b>15.9</b>

MODEL: Default  
 FILE NAME: W:\mfr\paw116011\CS\_def\work\_48\2425\03293\_25\62X14-SHT-SCHEDULE-TREE.dgn



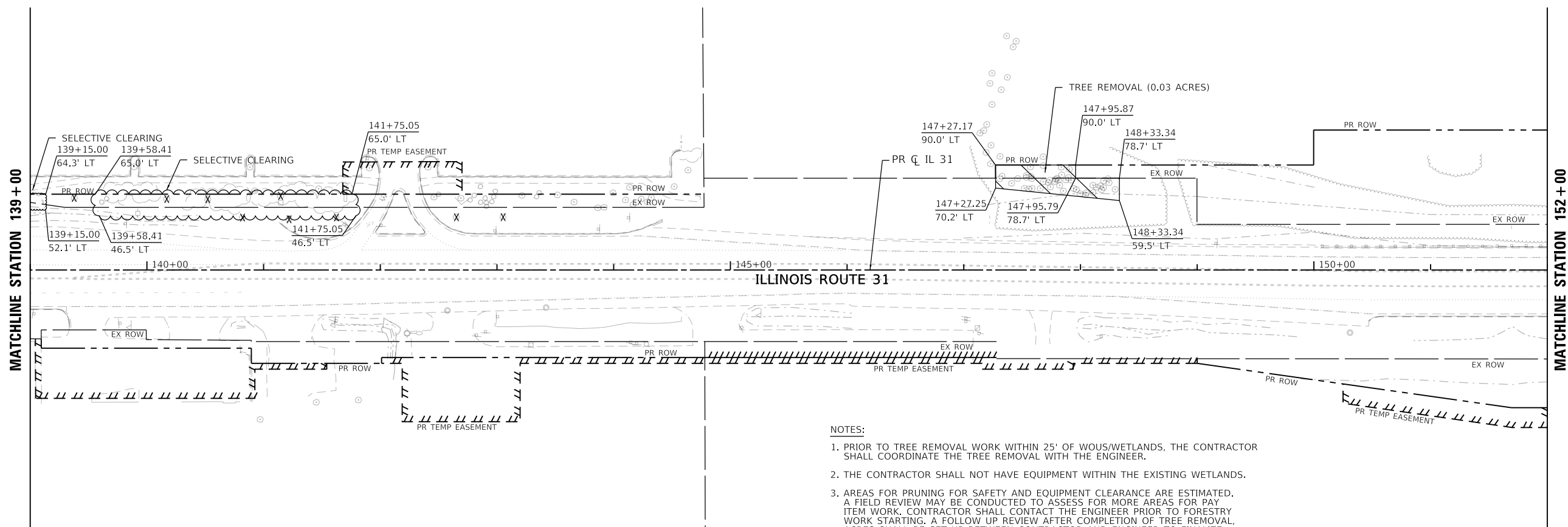
USER NAME = eboelter	DESIGNED - EJB	REVISED - 10/23/24
PLOT SCALE = 100:1	DRAWN - BAW	REVISED -
PLOT DATE = 24-OCT-2024	CHECKED - KE	REVISED -
	DATE - 08/12/2024	REVISED -

**STATE OF ILLINOIS  
DEPARTMENT OF TRANSPORTATION**

**ROADWAY SCHEDULE OF QUANTITIES  
ILLINOIS ROUTE 31**

SCALE: NTS      SHEET 5      OF 6      SHEETS      STA.      TO STA.

1 REVISED ENTIRE SHEET 10/28/2024				
F.A.P. RTE.	SECTION	COUNTY	TOTAL SHEETS	SHEET NO.
336A	2024-989-ATR	MC HENRY	72	8
			CONTRACT NO.	62X14
ILLINOIS		FED. AID PROJECT		

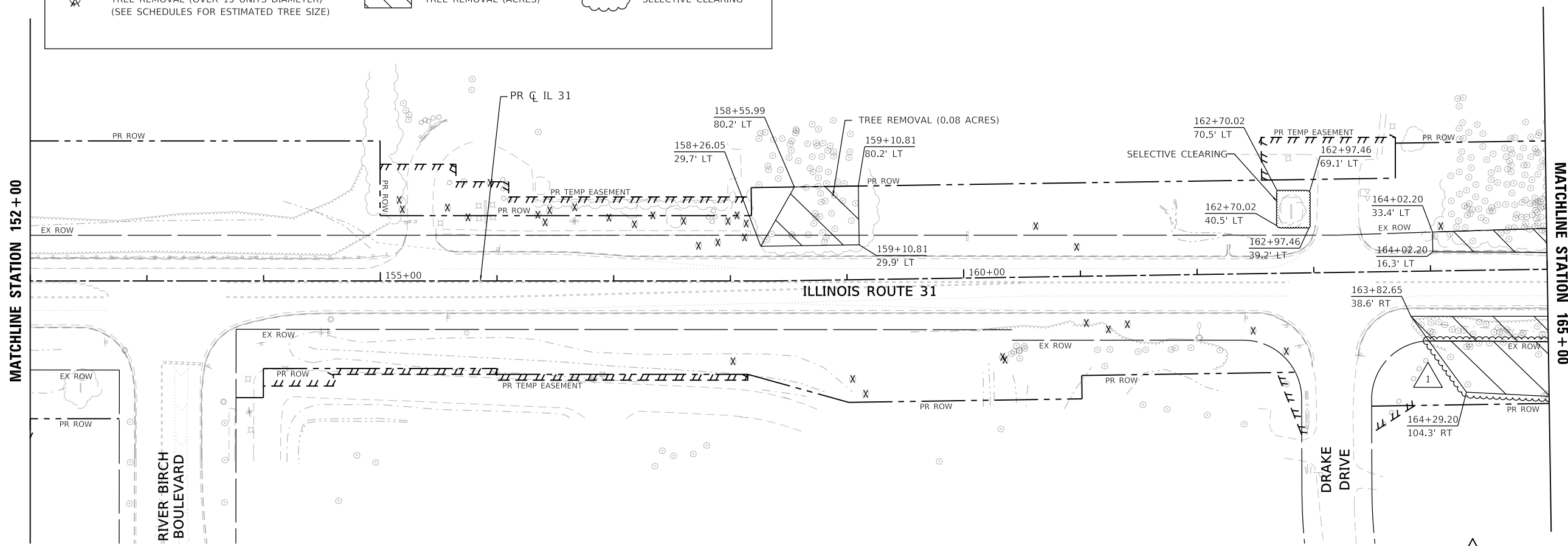


**NOTES:**

1. PRIOR TO TREE REMOVAL WORK WITHIN 25' OF WOUS/WETLANDS, THE CONTRACTOR SHALL COORDINATE THE TREE REMOVAL WITH THE ENGINEER.
2. THE CONTRACTOR SHALL NOT HAVE EQUIPMENT WITHIN THE EXISTING WETLANDS.
3. AREAS FOR PRUNING FOR SAFETY AND EQUIPMENT CLEARANCE ARE ESTIMATED. A FIELD REVIEW MAY BE CONDUCTED TO ASSESS FOR MORE AREAS FOR PAY ITEM WORK. CONTRACTOR SHALL CONTACT THE ENGINEER PRIOR TO FORESTRY WORK STARTING. A FOLLOW UP REVIEW AFTER COMPLETION OF TREE REMOVAL ACRES SHALL BE SET UP BETWEEN CONTRACTOR AND ENGINEER TO FINALIZE LOCATIONS FOR PRUNING.

**TREE REMOVAL LEGEND**

	TREE REMOVAL (6 TO 15 UNITS DIAMETER)		TREE REMOVAL (ACRES)		SELECTIVE CLEARING
	TREE REMOVAL (OVER 15 UNITS DIAMETER) (SEE SCHEDULES FOR ESTIMATED TREE SIZE)				



REVISD SHEET 10/28/2024

MODEL: Default  
FILE NAME: \\work\paw11\c01\UCS\_gdf\_work\481247133293\_3062\14-SHT-REM-TREE-02.dwg



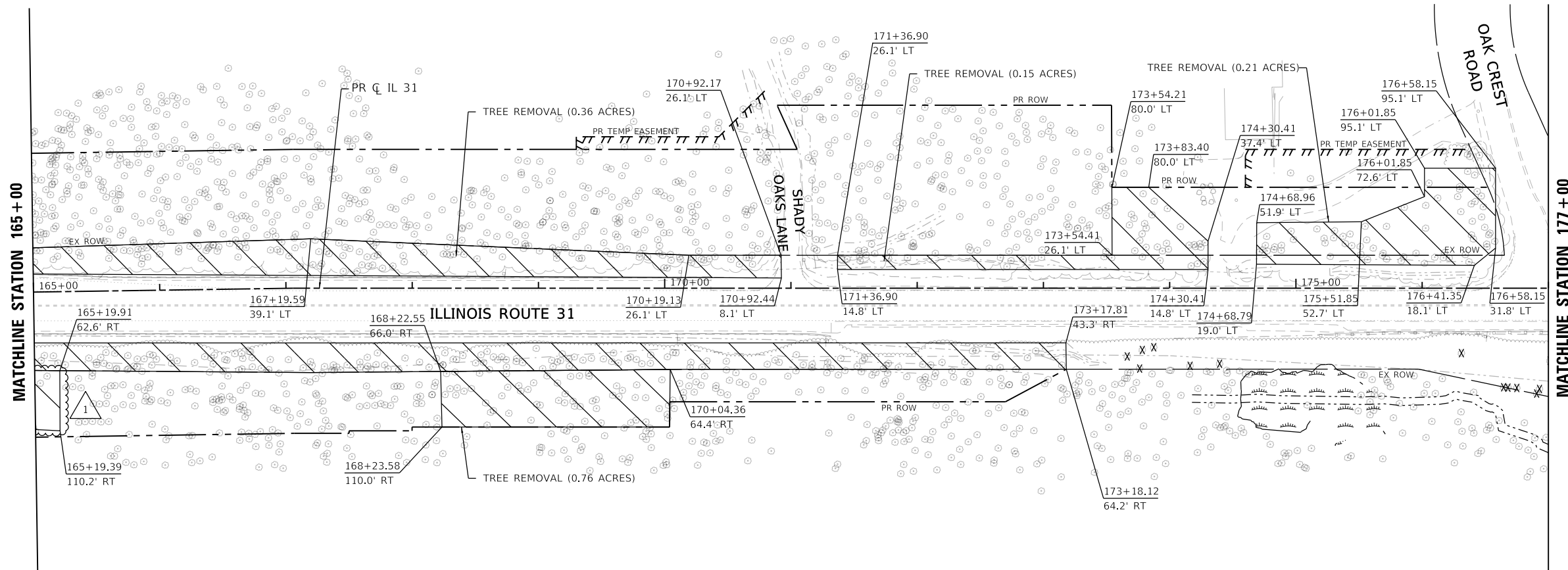
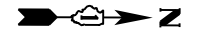
USER NAME = eboelter	DESIGNED - EJB	REVISED -  10/23/24
PLOT SCALE = 100:1	DRAWN - CRD	REVISED -
PLOT DATE = 23-OCT-2024	CHECKED - KE	REVISED -
	DATE - 08/12/2024	REVISED -

**STATE OF ILLINOIS  
DEPARTMENT OF TRANSPORTATION**

**TREE REMOVAL PLAN  
ILLINOIS ROUTE 31**

SCALE: 1"=50'    SHEET 2    OF 21    SHEETS    STA. 132+00    TO STA. 165+00

F.A.P. RTE.	SECTION	COUNTY	TOTAL SHEETS	SHEET NO.
336A	2024-989-ATR	McHENRY	72	23
			CONTRACT NO. 62X14	
		ILLINOIS	FED. AID PROJECT	

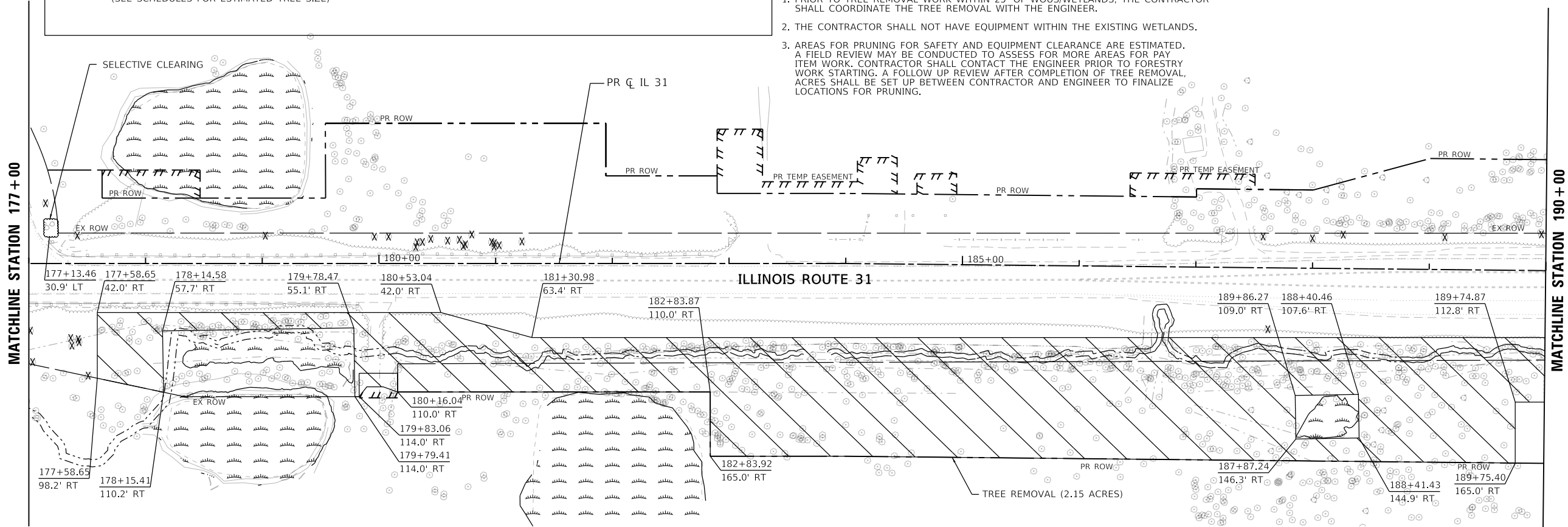
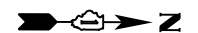


**TREE REMOVAL LEGEND**

- TREE REMOVAL (6 TO 15 UNITS DIAMETER)
- TREE REMOVAL (OVER 15 UNITS DIAMETER) (SEE SCHEDULES FOR ESTIMATED TREE SIZE)
- TREE REMOVAL (ACRES)
- SELECTIVE CLEARING

**NOTES:**

1. PRIOR TO TREE REMOVAL WORK WITHIN 25' OF WOUS/WETLANDS, THE CONTRACTOR SHALL COORDINATE THE TREE REMOVAL WITH THE ENGINEER.
2. THE CONTRACTOR SHALL NOT HAVE EQUIPMENT WITHIN THE EXISTING WETLANDS.
3. AREAS FOR PRUNING FOR SAFETY AND EQUIPMENT CLEARANCE ARE ESTIMATED. A FIELD REVIEW MAY BE CONDUCTED TO ASSESS FOR MORE AREAS FOR PAY ITEM WORK. CONTRACTOR SHALL CONTACT THE ENGINEER PRIOR TO FORESTRY WORK STARTING. A FOLLOW UP REVIEW AFTER COMPLETION OF TREE REMOVAL ACRES SHALL BE SET UP BETWEEN CONTRACTOR AND ENGINEER TO FINALIZE LOCATIONS FOR PRUNING.



MODEL: Default  
 FILE NAME: \\work\paw11\c011\CS\_001\work\48\247433293\_482\X14-SHT-REM-TREE-03.dwg



USER NAME = eboelter	DESIGNED - EJB	REVISED - 10/23/24
PLOT SCALE = 100:1	DRAWN - CRD	REVISED -
PLOT DATE = 23-OCT-2024	CHECKED - KE	REVISED -
	DATE - 08/12/2024	REVISED -

**STATE OF ILLINOIS  
DEPARTMENT OF TRANSPORTATION**

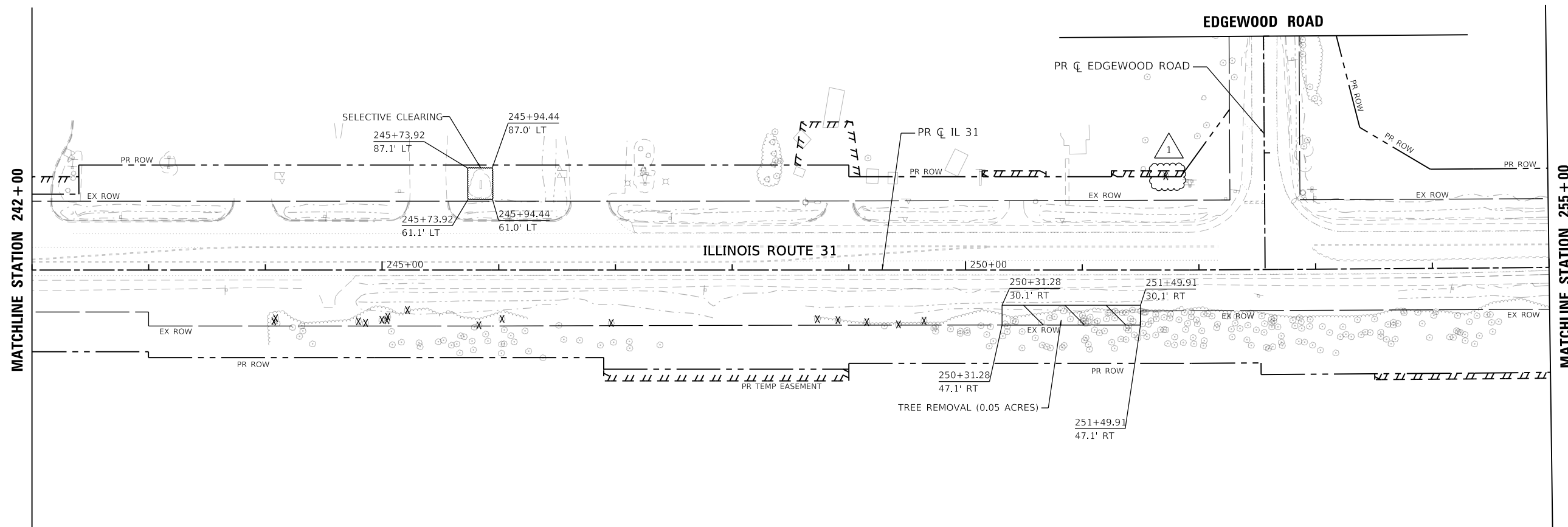
**TREE REMOVAL PLAN  
ILLINOIS ROUTE 31**

SCALE: 1"=50'    SHEET 3 OF 21 SHEETS    STA. 165+00 TO STA. 190+00

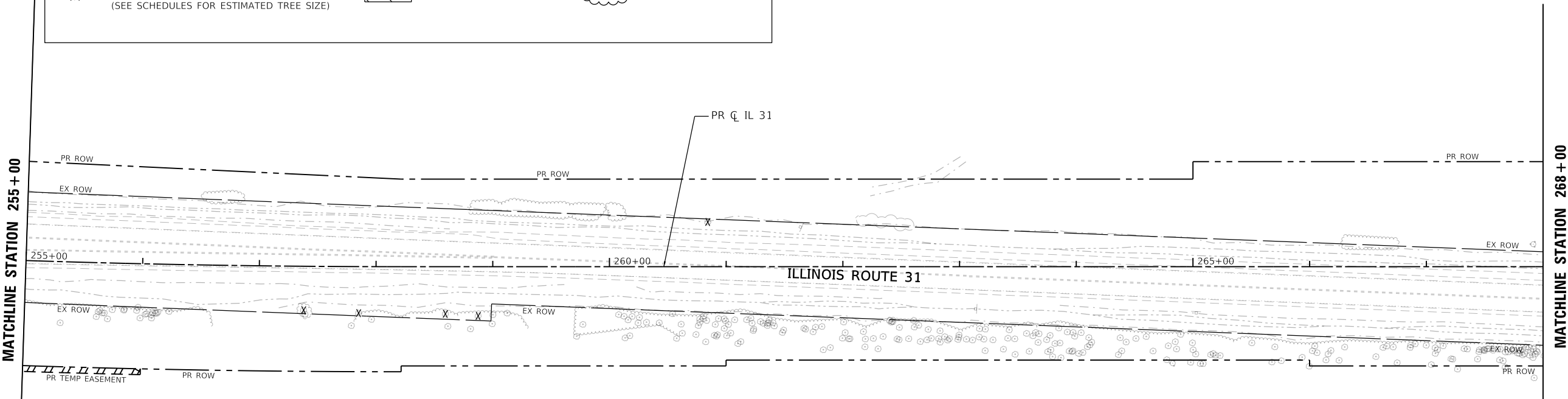
F.A.P. RTE. 336A	SECTION 2024-989-ATR	COUNTY McHENRY	TOTAL SHEETS 72	SHEET NO. 24
	CONTRACT NO. 62X14		ILLINOIS FED. AID PROJECT	

REVISION 10/28/2024





TREE REMOVAL LEGEND		
	TREE REMOVAL (6 TO 15 UNITS DIAMETER)	
	TREE REMOVAL (OVER 15 UNITS DIAMETER)	
	TREE REMOVAL (ACRES)	
	SELECTIVE CLEARING	



- NOTES:**
1. PRIOR TO TREE REMOVAL WORK WITHIN 25' OF WOUS/WETLANDS, THE CONTRACTOR SHALL COORDINATE THE TREE REMOVAL WITH THE ENGINEER.
  2. THE CONTRACTOR SHALL NOT HAVE EQUIPMENT WITHIN THE EXISTING WETLANDS.
  3. AREAS FOR PRUNING FOR SAFETY AND EQUIPMENT CLEARANCE ARE ESTIMATED. A FIELD REVIEW MAY BE CONDUCTED TO ASSESS FOR MORE AREAS FOR PAY ITEM WORK. CONTRACTOR SHALL CONTACT THE ENGINEER PRIOR TO FORESTRY WORK STARTING. A FOLLOW UP REVIEW AFTER COMPLETION OF TREE REMOVAL ACRES SHALL BE SET UP BETWEEN CONTRACTOR AND ENGINEER TO FINALIZE LOCATIONS FOR PRUNING.

MODEL: Default  
 FILE NAME: \\mch1paw11c01\11CS\_001\work\_4812472133293\_762X14-SHT-REM-TREE-06.dgn



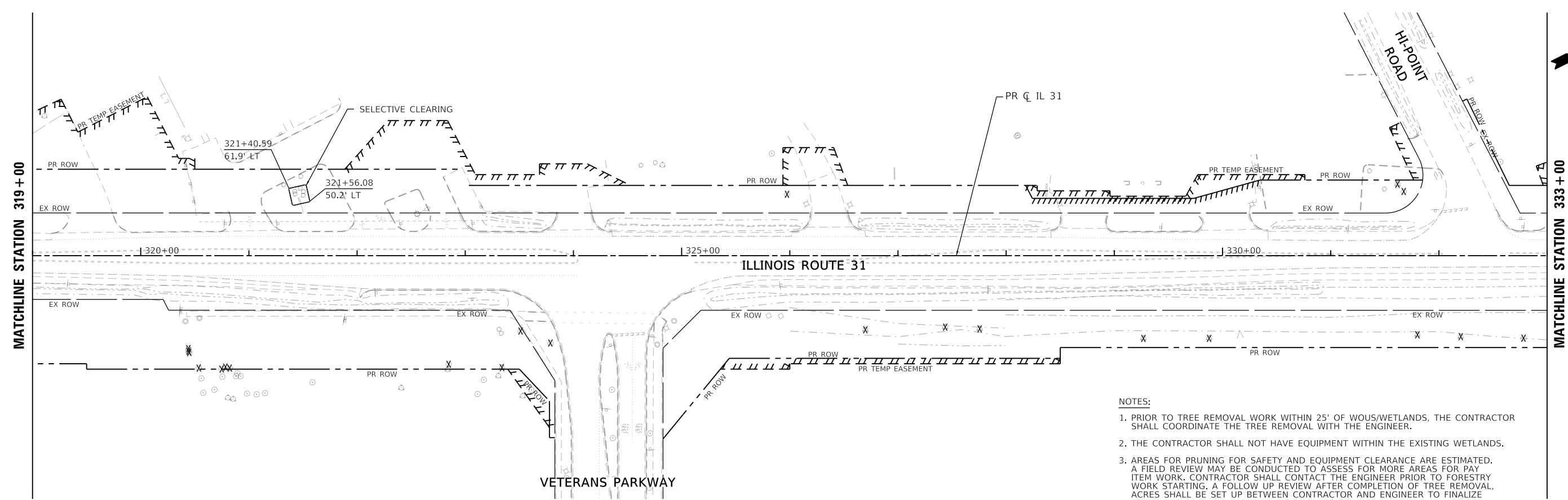
USER NAME = eboelter	DESIGNED - EJB	REVISED -  10/23/24
PLOT SCALE = 100:1	DRAWN - CRD	REVISED -
PLOT DATE = 23-OCT-2024	CHECKED - KE	REVISED -
	DATE - 08/12/2024	REVISED -

**STATE OF ILLINOIS  
DEPARTMENT OF TRANSPORTATION**

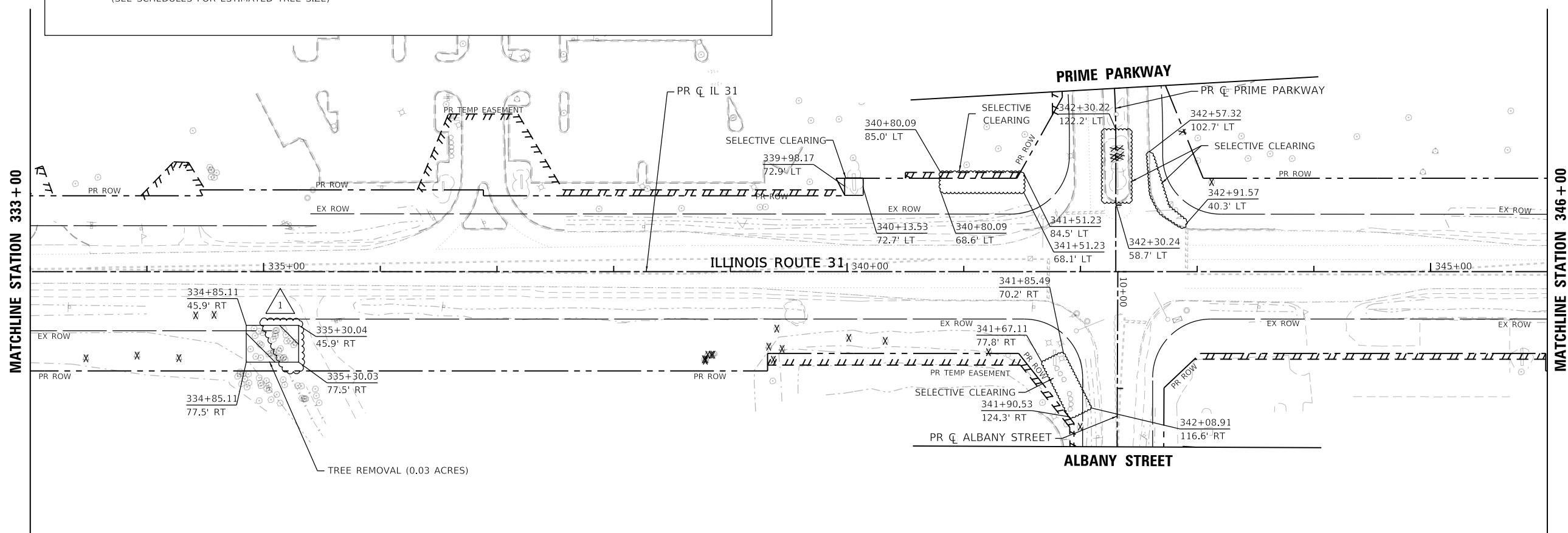
**TREE REMOVAL PLAN  
ILLINOIS ROUTE 31**

SCALE: 1"=50'    SHEET 6    OF 21    SHEETS    STA. 242+00    TO STA. 268+00

F.A.P. RTE.	SECTION	COUNTY	TOTAL SHEETS	SHEET NO.
336A	2024-989-ATR	McHENRY	72	27
CONTRACT NO. 62X14				
ILLINOIS		FED. AID PROJECT		



- NOTES:
1. PRIOR TO TREE REMOVAL WORK WITHIN 25' OF WOUS/WETLANDS, THE CONTRACTOR SHALL COORDINATE THE TREE REMOVAL WITH THE ENGINEER.
  2. THE CONTRACTOR SHALL NOT HAVE EQUIPMENT WITHIN THE EXISTING WETLANDS.
  3. AREAS FOR PRUNING FOR SAFETY AND EQUIPMENT CLEARANCE ARE ESTIMATED. A FIELD REVIEW MAY BE CONDUCTED TO ASSESS FOR MORE AREAS FOR PAY ITEM WORK. CONTRACTOR SHALL CONTACT THE ENGINEER PRIOR TO FORESTRY WORK STARTING. A FOLLOW UP REVIEW AFTER COMPLETION OF TREE REMOVAL ACRES SHALL BE SET UP BETWEEN CONTRACTOR AND ENGINEER TO FINALIZE LOCATIONS FOR PRUNING.



MODEL: Default; FILE NAME: \\hpc01\jcs\_gdf\_works\4812472133293\_10\62X14-SHT-REMOVAL-TREE-00.dgn



USER NAME = eboelter	DESIGNED - EJB	REVISED -  10/23/24
PLOT SCALE = 100:1	DRAWN - CRD	REVISED -
PLOT DATE = 23-OCT-2024	CHECKED - KE	REVISED -
	DATE - 08/12/2024	REVISED -

**STATE OF ILLINOIS  
DEPARTMENT OF TRANSPORTATION**

**TREE REMOVAL PLAN  
ILLINOIS ROUTE 31**

SCALE: 1"=50'    SHEET 9 OF 21 SHEETS    STA. 319+00 TO STA. 346+00

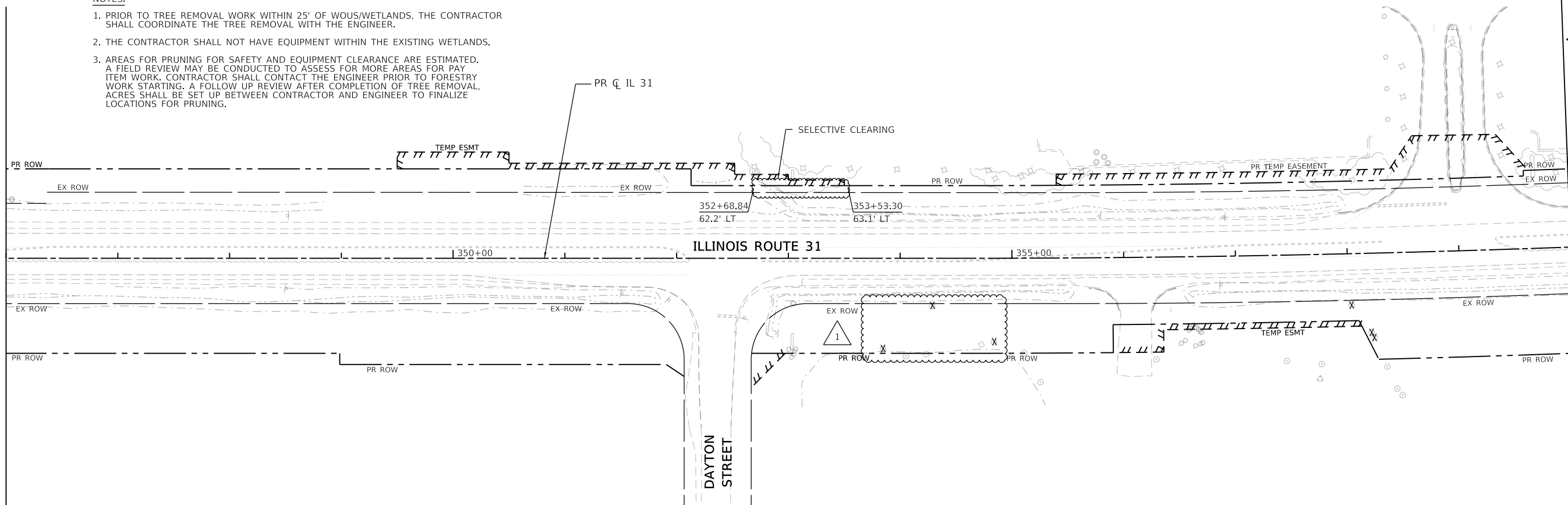
F.A. P. RTE.	SECTION	COUNTY	TOTAL SHEETS	SHEET NO.
336A	2024-989-ATR	McHENRY	72	30
			CONTRACT NO.	62X14
		ILLINOIS	FED. AID PROJECT	

NOTES:

1. PRIOR TO TREE REMOVAL WORK WITHIN 25' OF WOUS/WETLANDS, THE CONTRACTOR SHALL COORDINATE THE TREE REMOVAL WITH THE ENGINEER.
2. THE CONTRACTOR SHALL NOT HAVE EQUIPMENT WITHIN THE EXISTING WETLANDS.
3. AREAS FOR PRUNING FOR SAFETY AND EQUIPMENT CLEARANCE ARE ESTIMATED. A FIELD REVIEW MAY BE CONDUCTED TO ASSESS FOR MORE AREAS FOR PAY ITEM WORK. CONTRACTOR SHALL CONTACT THE ENGINEER PRIOR TO FORESTRY WORK STARTING. A FOLLOW UP REVIEW AFTER COMPLETION OF TREE REMOVAL ACRES SHALL BE SET UP BETWEEN CONTRACTOR AND ENGINEER TO FINALIZE LOCATIONS FOR PRUNING.

MATCHLINE STATION 346+00

MATCHLINE STATION 360+00

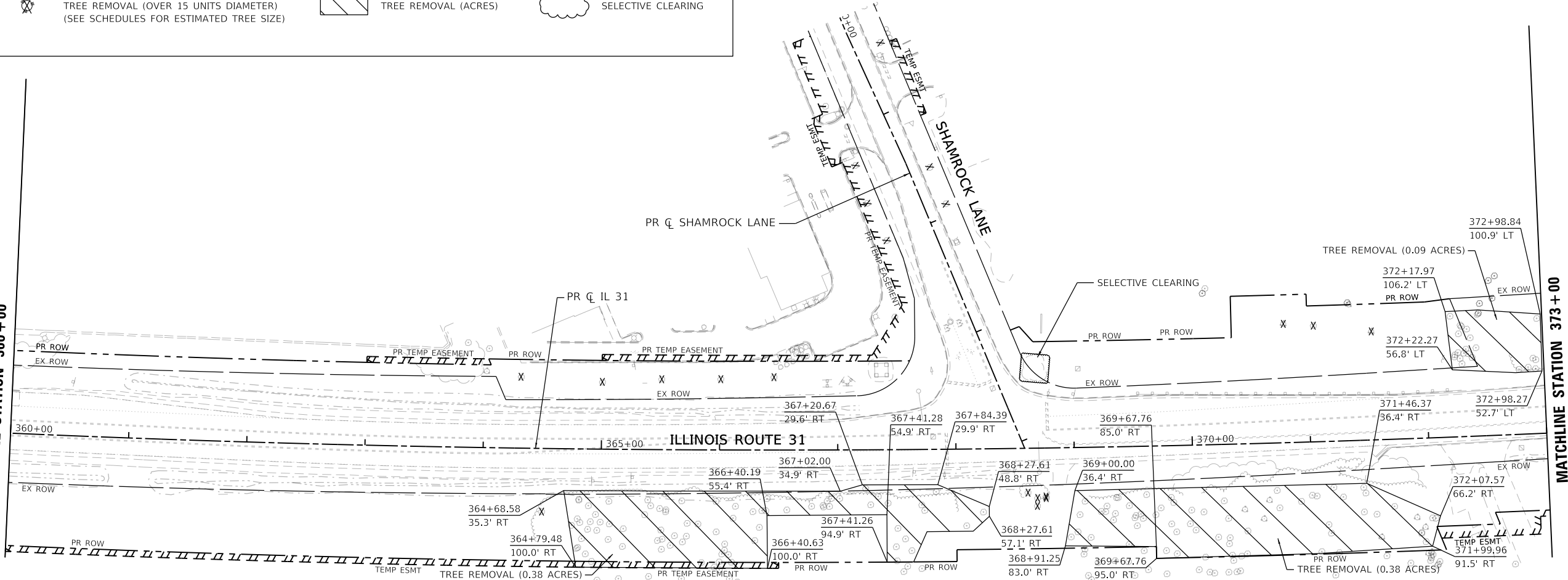


**TREE REMOVAL LEGEND**

	TREE REMOVAL (6 TO 15 UNITS DIAMETER)		TREE REMOVAL (OVER 15 UNITS DIAMETER)		SELECTIVE CLEARING
	(SEE SCHEDULES FOR ESTIMATED TREE SIZE)		TREE REMOVAL (ACRES)		

MATCHLINE STATION 360+00

MATCHLINE STATION 373+00



MODEL: Default  
FILE NAME: \\work\paw11\c01\1105\_001\work\_48\2472133293\_262\X14-SHT-REM-TREE-10.dgn



USER NAME = eboelter	DESIGNED - EJB	REVISED - 10/23/24
PLOT SCALE = 100:1	DRAWN - CRD	REVISED -
PLOT DATE = 23-OCT-2024	CHECKED - KE	REVISED -
	DATE - 08/12/2024	REVISED -

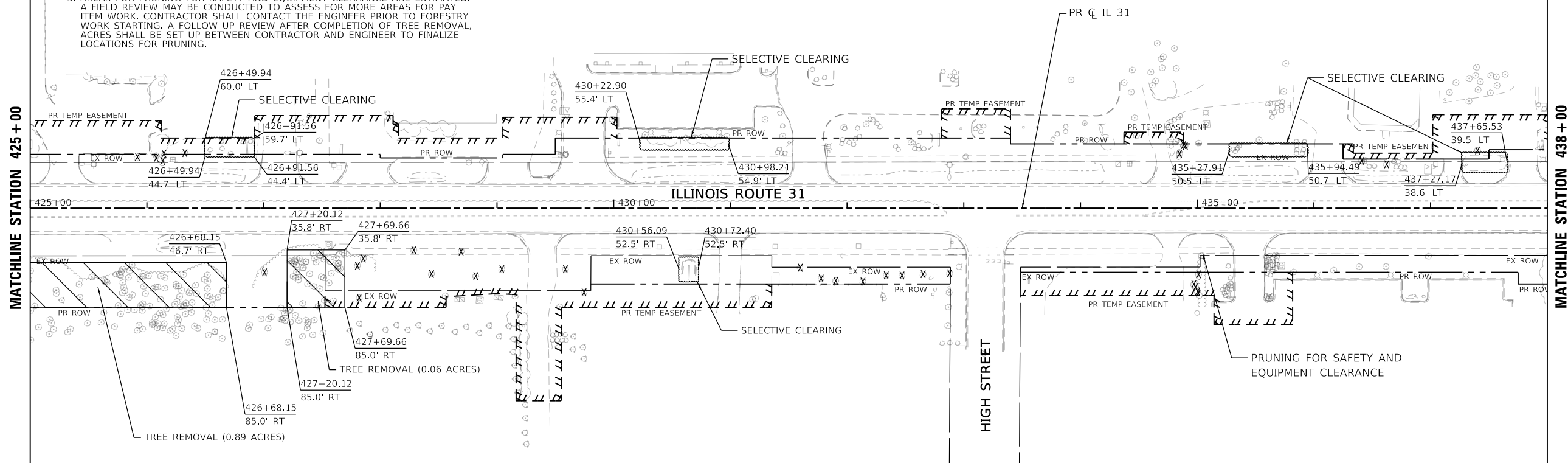
**STATE OF ILLINOIS  
DEPARTMENT OF TRANSPORTATION**

<b>TREE REMOVAL PLAN</b>	
<b>ILLINOIS ROUTE 31</b>	
SCALE: 1"=50'	SHEET 10 OF 21 SHEETS
STA. 346+00	TO STA. 373+00

F.A.P. RTE.	SECTION	COUNTY	TOTAL SHEETS	SHEET NO.
336A	2024-989-ATR	McHENRY	72	31
ILLINOIS FED. AID PROJECT			CONTRACT NO. 62X14	

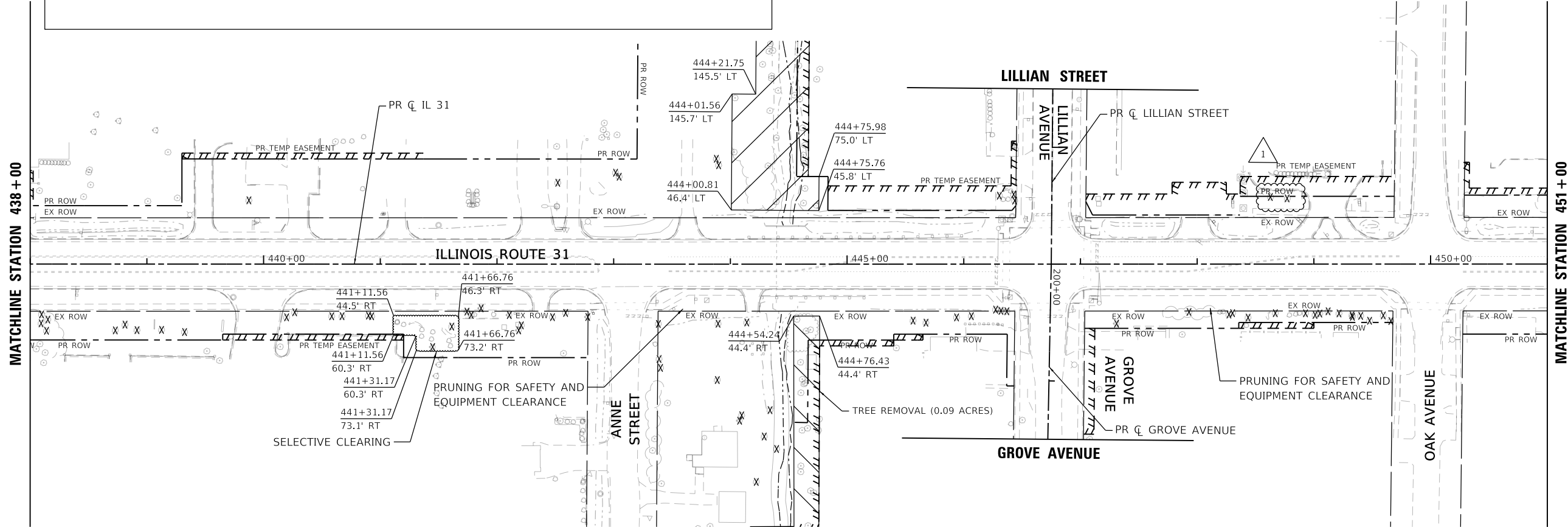
NOTES:

1. PRIOR TO TREE REMOVAL WORK WITHIN 25' OF WOUS/WETLANDS, THE CONTRACTOR SHALL COORDINATE THE TREE REMOVAL WITH THE ENGINEER.
2. THE CONTRACTOR SHALL NOT HAVE EQUIPMENT WITHIN THE EXISTING WETLANDS.
3. AREAS FOR PRUNING FOR SAFETY AND EQUIPMENT CLEARANCE ARE ESTIMATED. A FIELD REVIEW MAY BE CONDUCTED TO ASSESS FOR MORE AREAS FOR PAY ITEM WORK. CONTRACTOR SHALL CONTACT THE ENGINEER PRIOR TO FORESTRY WORK STARTING. A FOLLOW UP REVIEW AFTER COMPLETION OF TREE REMOVAL ACRES SHALL BE SET UP BETWEEN CONTRACTOR AND ENGINEER TO FINALIZE LOCATIONS FOR PRUNING.



**TREE REMOVAL LEGEND**

	TREE REMOVAL (6 TO 15 UNITS DIAMETER)		TREE REMOVAL (ACRES)		SELECTIVE CLEARING
	TREE REMOVAL (OVER 15 UNITS DIAMETER) (SEE SCHEDULES FOR ESTIMATED TREE SIZE)				



MODEL: Default; FILE NAME: \\work\paw11\c01\ICS\_pdf\_works\4012472133293\_13\62X14-SHT-REMA-TREE-13.dgn



USER NAME = eboelter	DESIGNED - EJB	REVISED - 10/23/24
PLOT SCALE = 100:1	DRAWN - CRD	REVISED -
PLOT DATE = 23-OCT-2024	CHECKED - KE	REVISED -
	DATE - 08/12/2024	REVISED -

**STATE OF ILLINOIS  
DEPARTMENT OF TRANSPORTATION**

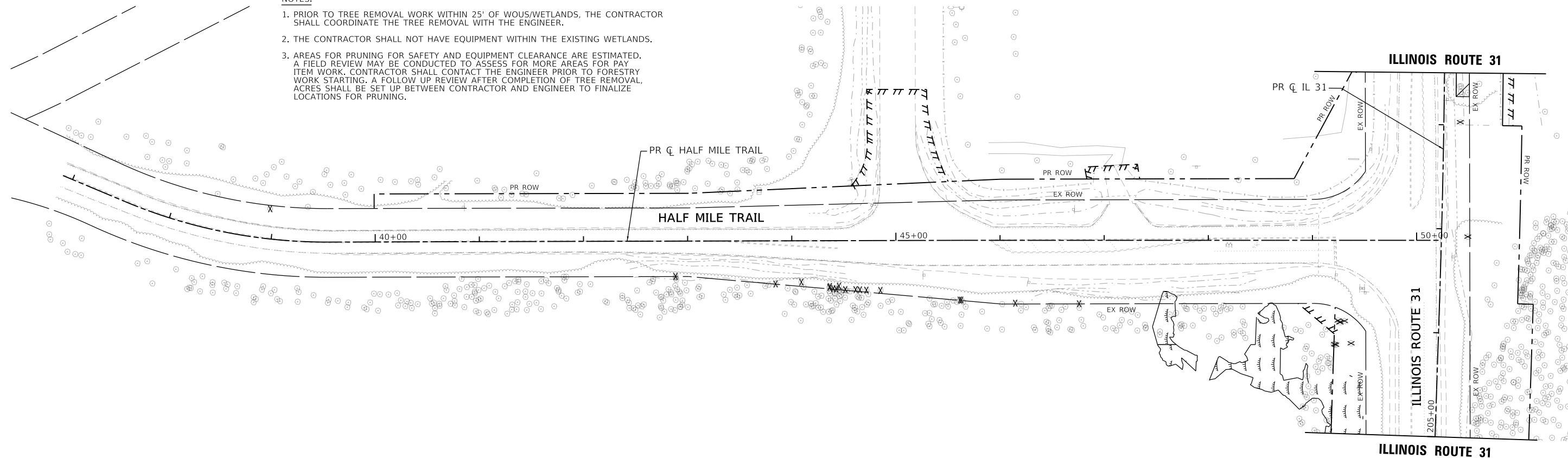
**TREE REMOVAL PLAN  
ILLINOIS ROUTE 31**

SCALE: 1"=50' SHEET 13 OF 21 SHEETS STA. 425+00 TO STA. 451+00

F.A. P. RTE.	SECTION	COUNTY	TOTAL SHEETS	SHEET NO.
336A	2024-989-ATR	McHENRY	72	34
			CONTRACT NO. 62X14	
		ILLINOIS FED. AID PROJECT		

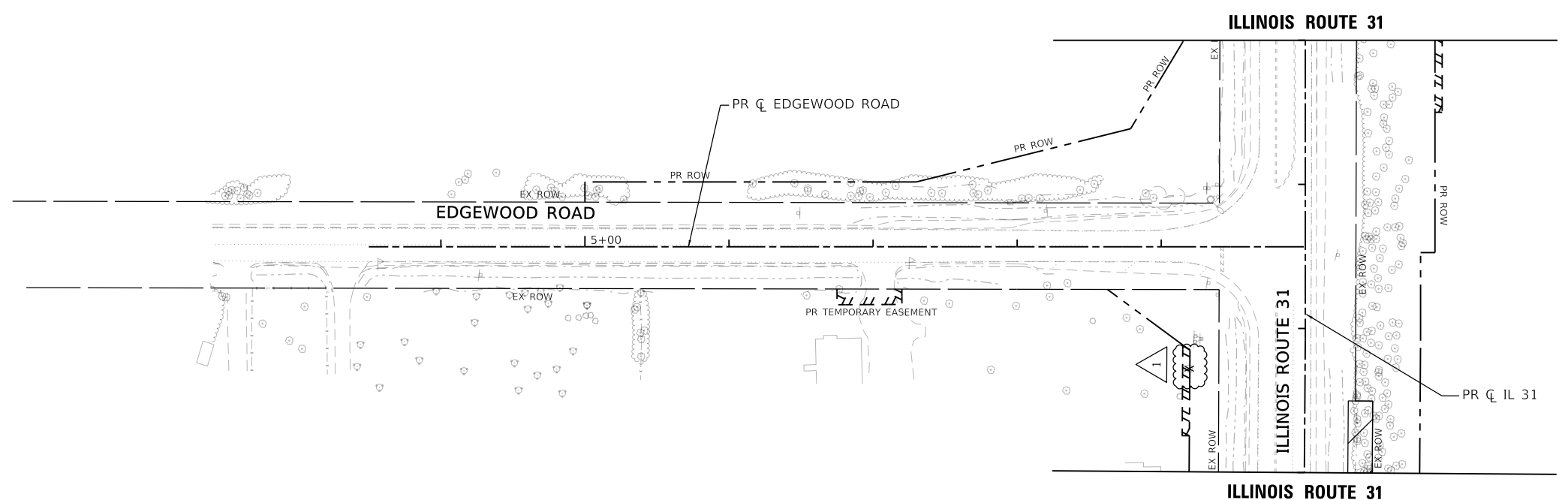
**NOTES:**

1. PRIOR TO TREE REMOVAL WORK WITHIN 25' OF WOUS/WETLANDS, THE CONTRACTOR SHALL COORDINATE THE TREE REMOVAL WITH THE ENGINEER.
2. THE CONTRACTOR SHALL NOT HAVE EQUIPMENT WITHIN THE EXISTING WETLANDS.
3. AREAS FOR PRUNING FOR SAFETY AND EQUIPMENT CLEARANCE ARE ESTIMATED. A FIELD REVIEW MAY BE CONDUCTED TO ASSESS FOR MORE AREAS FOR PAY ITEM WORK. CONTRACTOR SHALL CONTACT THE ENGINEER PRIOR TO FORESTRY WORK STARTING. A FOLLOW UP REVIEW AFTER COMPLETION OF TREE REMOVAL, ACRES SHALL BE SET UP BETWEEN CONTRACTOR AND ENGINEER TO FINALIZE LOCATIONS FOR PRUNING.



**TREE REMOVAL LEGEND**

	TREE REMOVAL (6 TO 15 UNITS DIAMETER)		TREE REMOVAL (ACRES)		SELECTIVE CLEARING
	TREE REMOVAL (OVER 15 UNITS DIAMETER)		(SEE SCHEDULES FOR ESTIMATED TREE SIZE)		



MODEL: Default  
FILE NAME: \\patrick\p11\c011\CS\_def\work\_d\1662X14-SHT-REMA-TREE-17.dgn



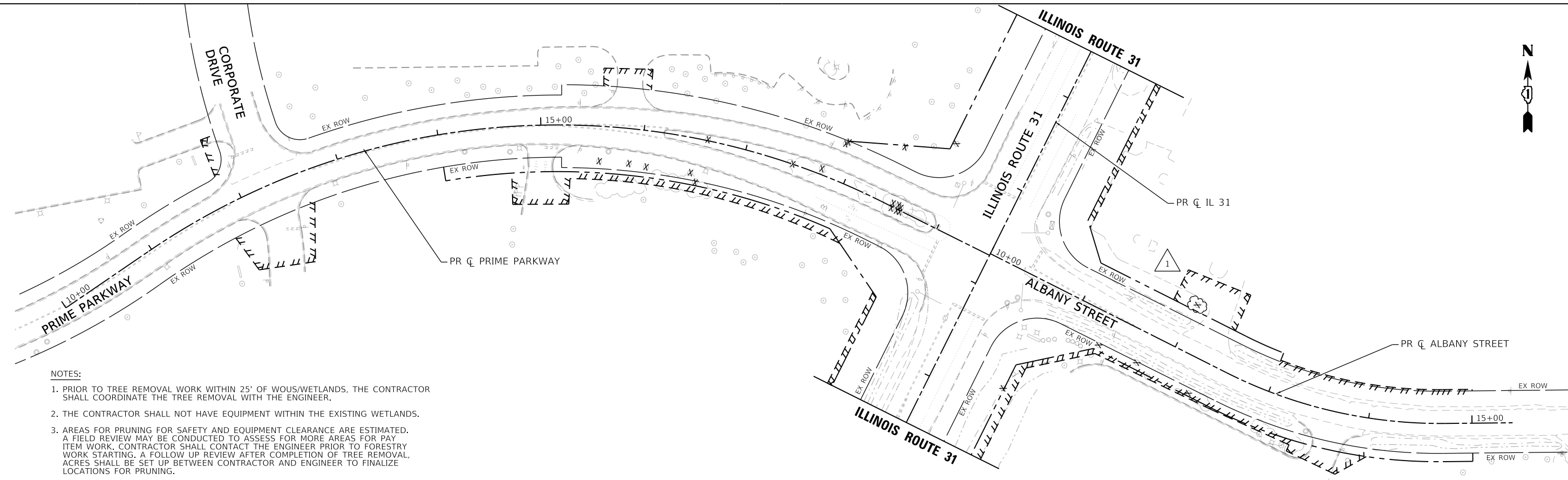
USER NAME = eboelter	DESIGNED - EJB	REVISED -  10/23/24
PLOT SCALE = 100:1	DRAWN - CRD	REVISED -
PLOT DATE = 23-OCT-2024	CHECKED - KE	REVISED -
	DATE - 08/12/2024	REVISED -

**STATE OF ILLINOIS  
DEPARTMENT OF TRANSPORTATION**

**TREE REMOVAL PLAN  
HALF MILE TRAIL AND EDGEWOOD ROAD**

SCALE: 1"=50'    SHEET 17 OF 21 SHEETS    STA. TO STA.

F.A.P. RTE.	SECTION	COUNTY	TOTAL SHEETS	SHEET NO.
336A	2024-989-ATR	McHENRY	72	38
			CONTRACT NO. 62X14	
		ILLINOIS	FED. AID PROJECT	



**NOTES:**

1. PRIOR TO TREE REMOVAL WORK WITHIN 25' OF WOUS/WETLANDS, THE CONTRACTOR SHALL COORDINATE THE TREE REMOVAL WITH THE ENGINEER.
2. THE CONTRACTOR SHALL NOT HAVE EQUIPMENT WITHIN THE EXISTING WETLANDS.
3. AREAS FOR PRUNING FOR SAFETY AND EQUIPMENT CLEARANCE ARE ESTIMATED. A FIELD REVIEW MAY BE CONDUCTED TO ASSESS FOR MORE AREAS FOR PAY ITEM WORK. CONTRACTOR SHALL CONTACT THE ENGINEER PRIOR TO FORESTRY WORK STARTING. A FOLLOW UP REVIEW AFTER COMPLETION OF TREE REMOVAL ACRES SHALL BE SET UP BETWEEN CONTRACTOR AND ENGINEER TO FINALIZE LOCATIONS FOR PRUNING.

TREE REMOVAL LEGEND	
	TREE REMOVAL (6 TO 15 UNITS DIAMETER) TREE REMOVAL (OVER 15 UNITS DIAMETER) (SEE SCHEDULES FOR ESTIMATED TREE SIZE)
	TREE REMOVAL (ACRES)
	SELECTIVE CLEARING

MODEL: Default  
 FILE NAME: \\work\116301\ICS\_pdf\_work\4812472133293\_1765214-SHT-TREES-18.dgn



USER NAME = eboelter	DESIGNED - EJB	REVISED -  10/23/24
PLOT SCALE = 100:1	DRAWN - CRD	REVISED -
PLOT DATE = 23-OCT-2024	CHECKED - KE	REVISED -
	DATE - 08/12/2024	REVISED -

**STATE OF ILLINOIS  
DEPARTMENT OF TRANSPORTATION**

TREE REMOVAL PLAN PRIME PARKWAY/ALBANY STREET			
SCALE: 1"=50'	SHEET 18	OF 21 SHEETS	STA. TO STA.

F.A.P. RTE.	SECTION	COUNTY	TOTAL SHEETS	SHEET NO.
336A	2024-989-ATR	McHENRY	72	39
CONTRACT NO.			62X14	
ILLINOIS		FED. AID PROJECT		