

STATE OF ILLINOIS
DEPARTMENT OF TRANSPORTATION

F.A.I. RTE.	SECTION	COUNTY	TOTAL SHEETS	SHEET NO.
88	(195-3)TR	WHITESIDE	5	1
		ILLINOIS	CONTRACT NO. 64U04	

INDEX OF SHEETS

- 1 COVER SHEET
- 2 SUMMARY OF QUANTITIES
- 3 GENERAL NOTES
- 4 SCHEDULE OF QUANTITIES
- 5 PLAN SHEET

HIGHWAY STANDARDS

- 000001-08 STANDARD SYMBOLS, ABBREVIATIONS AND PATTERNS
- 001006-00 DECIMAL OF AN INCH AND A FOOT
- 701101-05 OFF-RD OPERATIONS, MULTILANE, 15' TO 24" FROM PAVEMENT EDGE
- 701106-02 OFF-RD OPERATIONS, MULTILANE, MORE THAN 15' AWAY
- 701901-09 TRAFFIC CONTROL DEVICES

MONTMONRENCY TOWNSHIP SECTIONS (1)

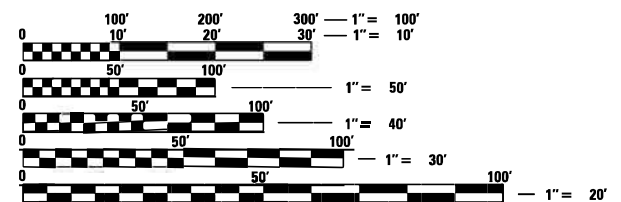
**PROPOSED
HIGHWAY PLANS**

**F.A.I. ROUTE 88 (I-88)
SECTION (195-3)TR
WHITESIDE COUNTY
OVER BN RR 0.5 MI S. OF US 30
TREE REMOVAL**

C-92-002-25

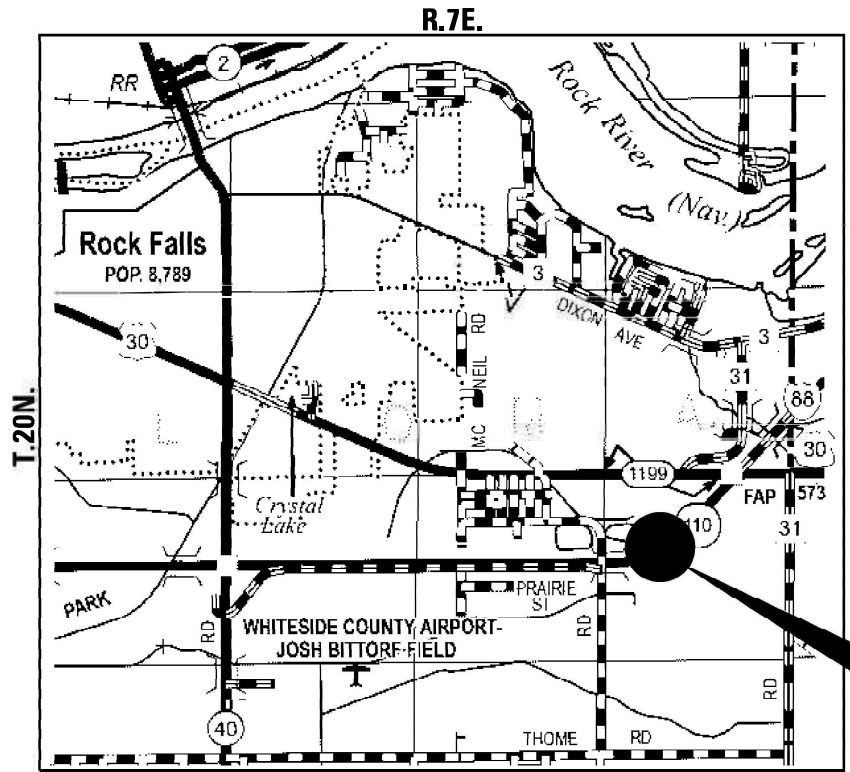


LOCATION OF SECTION INDICATED THIS: - [Arrow]



FULL SIZE PLANS HAVE BEEN PREPARED USING STANDARD ENGINEERING SCALES. REDUCED SIZED PLANS WILL NOT CONFORM TO STANDARD SCALES. IN MAKING MEASUREMENTS ON REDUCED PLANS, THE ABOVE SCALES MAY BE USED.

J.U.L.I.E.
JOINT UTILITY LOCATION INFORMATION FOR EXCAVATORS
1-800-892-0123
OR 811



PROJECT LOCATION

STATE OF ILLINOIS
DEPARTMENT OF TRANSPORTATION

SUBMITTED August 8, 2024

Saba Shoupson
REGIONAL ENGINEER

October 4, 2024
Scott A. Etk
ENGINEER OF DESIGN AND ENVIRONMENT

October 4, 2024
James J. ...
DIRECTOR OF HIGHWAYS PROJECT IMPLEMENTATION

**PRINTED BY THE AUTHORITY
OF THE STATE OF ILLINOIS**

PROJECT ENGINEER: CHAD SPREEMAN
PROJECT MANAGER: BRAD CUSHMAN (815)-284-5996
EMAIL: Brad.Cushman@Illinois.gov
CONTRACT NO. 64U04

MODEL: Default
 FILE NAME: p:\bullet-cw-bentley.com\PW\DOT\Documents\DOT Office\District 2\Project\64U04\Program Development\Studies & Plans\Drawings\CADD\CAD\Sheet\02_64U04-rt-S02.dgn

WHITESIDE

100% STATE

ROADWAY

0031

RURAL

CODE NO .	ITEM	UNIT	TOTAL QUANTITY	RURAL
20100110	TREE REMOVAL (6 TO 15 UNITS DIAMETER)	UNIT	285	285
20100210	TREE REMOVAL (OVER 15 UNITS DIAMETER)	JNIT	289	289
67100100	MOBILIZATION	L SUM	1	1
X2010505	CLEARING (SPECIAL)	L SUM	1	1
Z0013798	CONSTRUCTION LAYOUT	L SUM	1	1

USER NAME = brad.cushman	DESIGNED - _____	REVISED - _____
	DRAWN - _____	REVISED - _____
PLOT SCALE = 100,0000 ' / in.	CHECKED - _____	REVISED - _____
PLOT DATE = Aug-06-2024 02:14:00 PM	DATE - _____	REVISED - _____

**STATE OF ILLINOIS
 DEPARTMENT OF TRANSPORTATION**

SUMMARY OF QUANTITIES

SCALE: _____ SHEET ___ OF ___ SHEETS STA. _____ TO STA. _____

F.A.I. RTE.	SECTION	COUNTY	TOTAL SHEETS	SHEET NO.
I-88	(195-3)TR	WHITESIDE	5	2
			CONTRACT NO. 64U04	
			ILLINOIS FED. AID PROJECT	

20100110 TREE REMOVAL (6 TO 15 UNITS DIAMETER)

UNIT	LOCATION	OFFSET	REMARKS
8	2298+90	110' LT	I-88
8	2299+46	173' LI	I-88
7	2299+46	183' LT	I-88
13	2299+50	171' LT	I-88
8	2299+52	184' LT	I-88
13	2299+88	1' LT	I-88
10	2299+60	151' RT	I-88
9	2299+62	160' RT	I-88
6	2299+65	167' RT	I-88
8	2299+78	93' RT	I-88
8	2299+78	93' RT	I-88
11	2299+81	99' RT	I-88
10	2299+91	89' RT	I-88
11	2299+91	89' RT	I-88
13	2300+02	171' RT	I-88
8	2300+03	186' RT	I-88
6	2300+03	186' RT	I-88
13	2300+04	190' RT	I-88
14	2300+00	196' RT	I-88
8	2300+08	199' RT	I-88
11	2300+07	215' RT	I-88
14	2300+06	220' RT	I-88
11	2300+07	228' RT	I-88
12	2300+22	204' RT	I-88
7	2300+32	239' RT	I-88
11	2300+46	222' RT	I-88
13	2300+56	208' RT	I-88
14	2300+69	197' RT	I-88
285	TOTAL		

20100210 TREE REMOVAL (OVER 15 UNITS DIAMETER)

UNIT	LOCATION	OFFSET	REMARKS
17	2298+90	110' LT	I-88
14	2298+90	110' LT	I-88
25	2299+49	191' LT	I-88
18	2299+47	199' LT	I-88
23	2300+02	171' RT	I-88
32	2300+02	171' RT	I-88
19	2300+06	220' RT	I-88
38	2300+35	142' RT	I-88
26	2300+41	192' RT	I-88
19	2300+55	213' RT	I-88
18	2300+56	216' RT	I-88
17	2300+61	221' RT	I-88
23	2300+64	229' RT	I-88
289	TOTAL		

MODEL: Default
 FILE: \\mfrs-pw-bentley.com\FW\DOT\Documents\DOT_Offices\Dir\dir_2\Project\64U04\Program_Development\Studies_6_Plan\Drawn\CADD\CAD\Sheet\02_64U04-1-1-S02.dgn

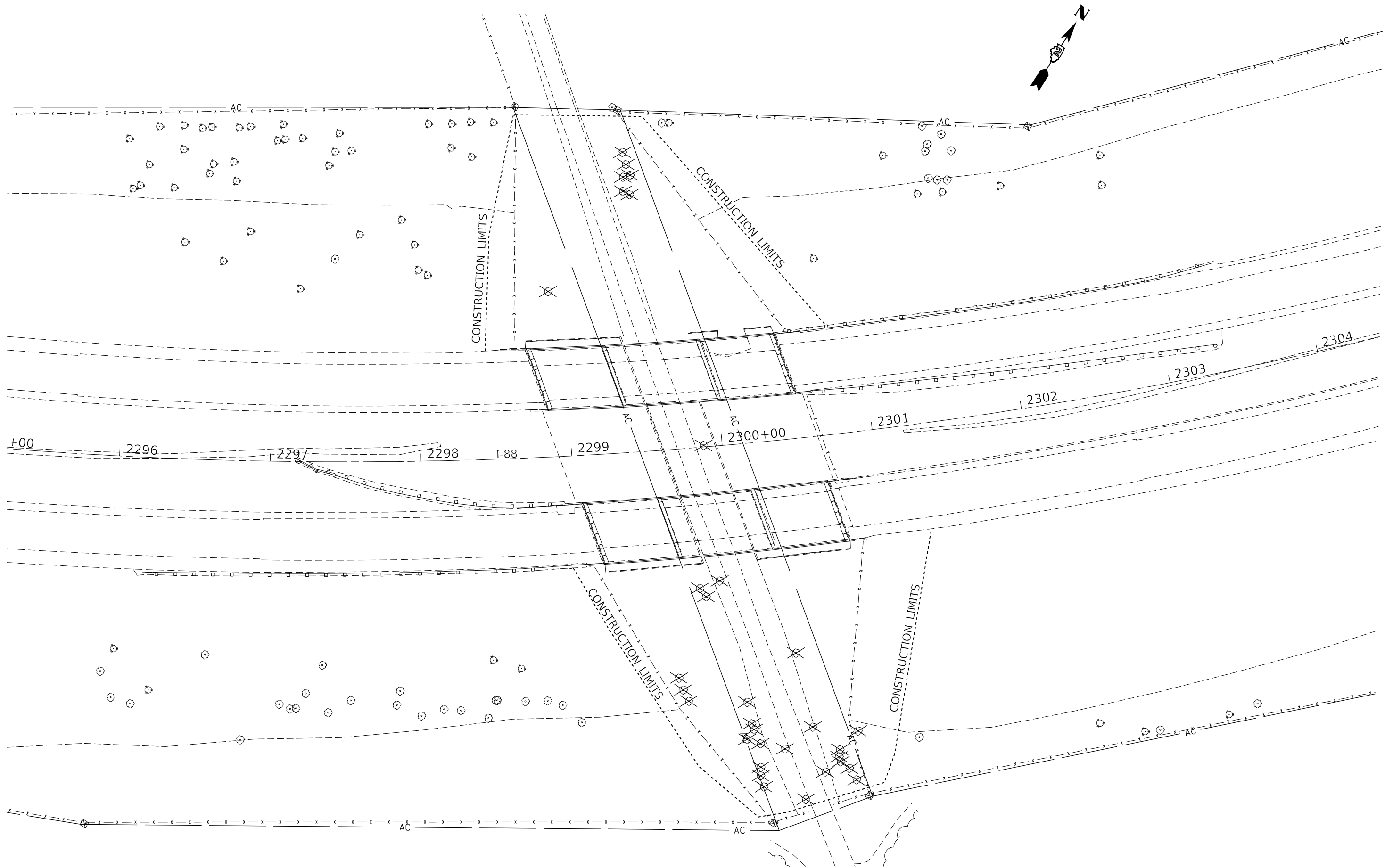
USER NAME = brad.cushman	DESIGNED - _____	REVISED - _____
PLOT SCALE = 100,0000 ' / in.	DRAWN - _____	REVISED - _____
PLOT DATE = Aug-06-2024 02:20:18 PM	CHECKED - _____	REVISED - _____
	DATE - _____	REVISED - _____

**STATE OF ILLINOIS
DEPARTMENT OF TRANSPORTATION**

SCHEDULE OF QUANTITIES

SCALE: _____ SHEET ____ OF ____ SHEETS STA. _____ TO STA. _____

F.A.I. RTE.	SECTION	COUNTY	TOTAL SHEETS	SHEET NO.
I-88	(195-3)TR	WHITESIDE	5	4
			CONTRACT NO. 64U04	
ILLINOIS FED. AID PROJECT				



MODEL: Default
 FILE NAME: p:\ultra-cw-bentley.com\p\INDOT\Documents\DOT_Offices\Director_2\Projects\64U04\Program_Development\Studies_6_Plan\Drawn\CADD\CAD\Sheet\D2_64U04-sh-48n.dwg

TREE REMOVAL

USER NAME = brad.cushman DESIGNED - DRAWN - PLOT SCALE = 60,0000 * / in. CHECKED - PLOT DATE = Aug-07-2024 07:05:01 AM DATE -			REVISED - REVISED - REVISED - REVISED -			STATE OF ILLINOIS DEPARTMENT OF TRANSPORTATION			PLAN SHEET			F.A.I. RTE. 88 SECTION (195-3)TR COUNTY WHITESIDE TOTAL SHEETS 5 SHEET NO. 5 CONTRACT NO. 64U04	
SCALE:			SHEET OF SHEETS			STA. TO STA.			ILLINOIS		FED. AID PROJECT		