

FOR INDEX OF SHEETS AND
HIGHWAY STANDARDS SEE SHEET NO. 2

TOWNSHIP: STOCKTON
SECTIONS: 2-11

STATE OF ILLINOIS
DEPARTMENT OF TRANSPORTATION
DIVISION OF HIGHWAYS

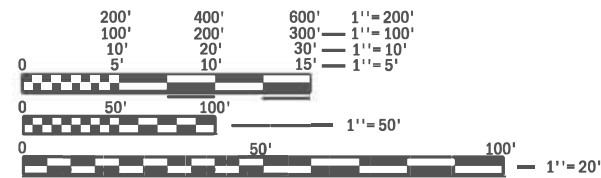
PROPOSED HIGHWAY PLANS

FAP ROUTE 301 (US 20)
SECTION (24)TR
STATE ONLY
JO DAVIESS COUNTY
CLEARING AND TREE REMOVAL OF US 20
FROM LOGEMANN ROAD TO RUSH STREET

IMPROVEMENT ENDS
STA 2183+58.00

IMPROVEMENT BEGINS
STA 1968+90.00

C-92-003-25
R 4 E

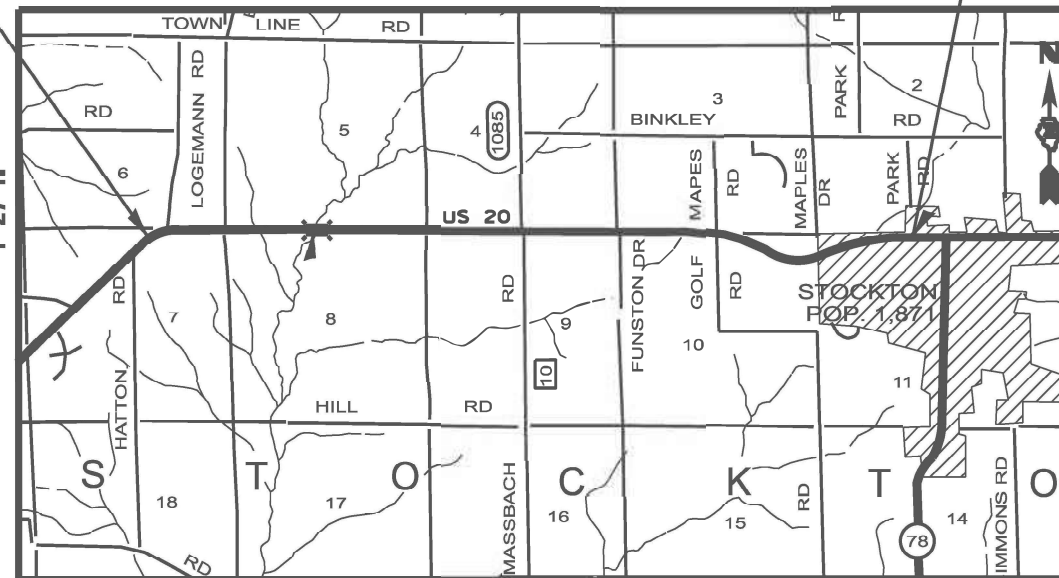


FULL SIZE PLANS HAVE BEEN PREPARED USING STANDARD
ENGINEERING SCALES. REDUCED SIZED PLANS WILL NOT
CONFORM TO STANDARD SCALES. IN MAKING MEASUREMENTS
ON REDUCED PLANS, THE ABOVE SCALES MAY BE USED.

J.U.L.I.E.
JOINT UTILITY LOCATION INFORMATION FOR EXCAVATION
1-800-892-0123
OR 811

DISTRICT NO. 2
PROJECT ENGINEER: CHAD SPREEMAN, PE
PROJECT MANAGER: TRACI DUDEN (815) 284-5932
traci.duden@illinois.gov

CONTRACT NO. 64U05



GROSS LENGTH = 21468 FT. = 4.07 MILE
NET LENGTH = 21468 FT. = 4.07 MILE

F.A.P. RTE.	SECTION	COUNTY	TOTAL SHEETS	SHEET NO.
301	(24)TR	JODAVIESS	32	1
		ILLINOIS	CONTRACT NO. 64U05	

D-92-080-25



STATE OF ILLINOIS
DEPARTMENT OF TRANSPORTATION

SUBMITTED August 8 2024

Siva Shoupson
REGIONAL ENGINEER

October 4, 2024
EA. Elk
ENGINEER OF DESIGN AND ENVIRONMENT

October 4, 2024
James, Jim
DIRECTOR OF HIGHWAYS PROJECT IMPLEMENTATION 13

PRINTED BY THE AUTHORITY
OF THE STATE OF ILLINOIS

INDEX OF SHEETS

1	COVER SHEET
2	INDEX / HIGHWAY STANDARDS
3	GENERAL NOTES
4	SUMMARY OF QUANTITIES
5 - 6	SCHEDULE OF QUANTITIES
7 - 16	ALIGNMENT, TIES, AND BENCHMARKS
17 - 32	REMOVAL SHEETS

HIGHWAY STANDARDS

000001-08	STANDARD SYMBOLS, ABBREVIATIONS AND PATTERNS
001006-00	DECIMAL OF AN INCH AND A FOOT
701001-02	OFF-RD OPERATIONS, 2L, 2W, MORE THAN 15 FT AWAY
701006-05	OFF-RD OPERATIONS, 2L, 2W, 15' (4.5m) TO 24" (600mm) FROM PAVEMENT EDGE
701011-04	OFF-RD MOVING OPERATIONS, 2L, 2W, DAY ONLY
701201-05	LANE CLOSURE, 2L, 2W, DAY ONLY, FOR SPEEDS \geq 45 MPH
701306-04	LANE CLOSURE, 2L, 2W, SLOW MOVING OPERATIONS DAY ONLY, FOR SPEEDS \geq 45 MPH
701901-09	TRAFFIC CONTROL DEVICES

MODEL: SHT_PLAN
FILE NAME: C:\Bentley\CONNECT1011\Organization\Civil\DOT_Standards\Civil\DOT_Standards.dwg

USER NAME = Eric.Thomas	DESIGNED -	REVISED -	STATE OF ILLINOIS DEPARTMENT OF TRANSPORTATION	INDEX OF SHEETS AND HIGHWAY STANDARDS	F.A.P. RTE.	SECTION	COUNTY	TOTAL SHEETS	SHEET NO.
PLOT SCALE = \$\$SCALE\$	DRAWN -	REVISED -			301	(24)TR	JODAVIESS	32	2
PLOT DATE = 12/7/2022	CHECKED -	REVISED -			CONTRACT NO. 64U05				
	DATE -	REVISED -			SCALE:	SHEET OF SHEETS	STA. TO STA.	ILLINOIS FED. AID PROJECT	

GENERAL NOTES

The Contractor shall be responsible for collecting and maintaining an electronic log of all stakeout survey that is performed on the job, either by him/her or any sub-contractor performing the stakeout. Upon request, all logs shall be submitted to the Department. No additional compensation will be allowed for this work, but shall be considered included in the cost for CONSTRUCTION LAYOUT.

The Contractor shall begin fence erection as soon as clearing operations permit. Before removing existing fence from an area that contains livestock, the Contractor shall erect, along the proposed right of way lines, a temporary fence or wire meeting the approval of the Engineer. The Contractor shall concentrate his permanent fencing operations at these locations and at other specific locations as directed by the Engineer. The cost of arranging work as herein specified will not be paid for as a separate item but shall be included in the contract unit price per Foot for WOVEN WIRE FENCE, CHAIN LINK FENCE. Temporary Fence shall be paid for by the Foot for TEMPORARY FENCE.

The following listed utilities located within the project limits or immediately adjacent to the project construction limits are members of JULIE:

Jo-Carroll Energy	815-858-5522
NICOR Gas Co.	630-388-3019
Mediacom	815-716-0582
iFiber	815-753-5798
Village of Stockton	815-947-2417
Frontier (North)	815-544-6171
ComEd	630-437-2212

IDOT is not a member of JULIE. If you are near any overhead lighting, intersection lighting or traffic signals, contact the IDOT Traffic Office at 815/284-5469 at least 48 hours prior to work.

COMMITMENTS

All shrubs, bushes and saplings and trees three (3) inches or greater in diameter at breast height shall be cleared or removed from October 1 through March 31.

FILE NAME = 64U05-003.DOCX	USER NAME =	DESIGNED - Engineering Systems	REVISED -	STATE OF ILLINOIS DEPARTMENT OF TRANSPORTATION	GENERAL NOTES	ROUTE	SECTION	COUNTY	TOTAL SHEETS	SHEET NO.		
		DRAWN -	REVISED -			FAP 301	(24)TR	Jo Daviess	32	3		
	PLOT SCALE =	CHECKED -	REVISED -			CONTRACT NO. 64U05						
	PLOT DATE = 8/8/2024 10:42 AM	DATE - 8/8/2024 9:47 AM	REVISED -			SCALE:	SHEET NO.	OF	SHEETS	STA.	TO STA.	ILLINOIS

**CONST.
CODE
100%
STATE**

CODE NO.	ITEM	UNIT	TOTAL QUANTITY	ROADWAY
				0031 RURAL
20100110	TREE REMOVAL (6 TO 15 UNITS DIAMETER)	UNIT	1535	1535
20100210	TREE REMOVAL (OVER 15 UNITS DIAMETER)	UNIT	2373	2373
20101000	TEMPORARY FENCE	FOOT	2672	2672
67100100	MOBILIZATION	L SUM	1	1
70100450	TRAFFIC CONTROL AND PROTECTION, STANDARD 701201	L SUM	1	1
70100460	TRAFFIC CONTROL AND PROTECTION, STANDARD 701306	L SUM	1	1
X2010505	CLEARING (SPECIAL)	L SUM	1	1
X6640104	FENCE REMOVAL	FOOT	15053	15053
Z0013798	CONSTRUCTION LAYOUT	L SUM	1	1

MODEL: Default
 FILE: \\nailes-pw\fileshare\bea\rs\com\p\windot\documents\DOT_0_csr\District_2\ORBD_projects\64U05\Program_Developments\Studies & Plans\Design\CADD\CAD\Drawings\02_64U05.tbl-500.dgn



USER NAME = Cristian.Rosas
 PLOT SCALE = \$SCALE\$
 PLOT DATE = 8/8/2024

DESIGNED - MMW
 DRAWN - NWS
 CHECKED - ALM
 DATE - 12/10/2021

REVISED -
 REVISED -
 REVISED -
 REVISED -

STATE OF ILLINOIS
 DEPARTMENT OF TRANSPORTATION

SUMMARY OF QUANTITIES

SCALE: SHEET OF SHEETS STA. TO STA.

F.A.P. RTE.	SECTION	COUNTY	TOTAL SHEETS	SHEET NO.
301	(24)TR	JODAVIESS	32	4
FED. ROAD DIST. NO. ILLINOIS FED. AID PROJECT			CONTRACT NO. 64U05	

MODEL: Default
 FILE: \\nailes-pw\idest-cw-beckley.com\p\INDOT\Documents\DOT_0_cas\District_2\ORR0 Projects\64U05\Program_DevelopmentStudies & Plans\Design\CADD\CAD\Drawings\02_64U05-sched02.dwg

2010110 TREE REMOVAL (6 TO 15 UNITS DIAMETER)			
UNIT	LOCATION	OFFSET	REMARKS
	US 20		
9	1992+47.47	91.00 RT	
15	1995+02.68	31.37 RT	
8.5	1996+92.47	43.00 RT	
12.5	1996+98.47	43.00 RT	
13.5	1997+01.47	43.00 RT	
8	1997+03.49	44.53 RT	
12	1997+08.18	37.98 RT	
7	1997+16.47	42.00 RT	
8	1997+67.11	40.93 RT	
7.5	1998+07.15	45.96 RT	
10	1998+83.71	32.57 RT	
8	1998+87.31	32.88 RT	
12	1998+89.29	31.49 RT	
6	1999+33.47	34.00 RT	
7	1999+39.47	34.00 RT	
20	1999+43.71	41.79 RT	
10	1999+60.47	35.00 RT	
6.5	1999+69.47	35.00 RT	
9.5	1999+96.47	34.00 RT	
6	1999+98.47	41.00 RT	
6.5	1999+98.47	36.00 RT	
6.5	1999+99.47	36.00 RT	
7	1999+99.47	34.00 RT	
6	2000+03.47	38.00 RT	
8.5	2000+03.47	37.00 RT	
6	2000+10.47	32.00 RT	
6	2000+11.47	35.00 RT	
6	2000+12.47	36.00 RT	
6	2000+12.47	32.00 RT	
6	2000+14.47	37.00 RT	
7	2000+16.47	37.00 RT	
7	2000+18.47	33.00 RT	
6.5	2000+20.47	35.00 RT	
7	2000+22.47	34.00 RT	
8.5	2000+26.47	34.00 RT	
6	2000+34.47	35.00 RT	
7	2000+37.47	37.00 RT	
7	2000+40.47	36.00 RT	
7	2000+40.47	34.00 RT	
7	2000+40.47	36.00 RT	
6.5	2000+42.47	34.00 RT	
6	2000+47.47	33.00 RT	
7	2000+47.47	34.00 RT	
7	2000+47.47	36.00 RT	
7	2000+51.47	39.00 RT	
6.5	2000+54.70	33.00 RT	
6.5	2000+54.47	35.00 RT	
6.5	2000+56.47	35.00 RT	
6.5	2000+56.47	35.00 RT	
6.5	2000+57.47	35.00 RT	
8	2002+37.94	29.58 RT	
9.5	2002+74.47	30.00 RT	
8	2002+79.09	24.44 RT	
11.5	2002+96.47	32.00 RT	
8	2003+41.47	28.00 RT	
8	2003+49.35	24.55 RT	
7	2003+49.47	28.00 RT	

2010110 TREE REMOVAL (6 TO 15 UNITS DIAMETER) (CONTINUE)			
UNIT	LOCATION	OFFSET	REMARKS
	US 20		
8	2003+49.62	24.56 RT	
6	2003+56.84	24.25 RT	
10	2003+60.47	28.00 RT	
12	2003+64.91	22.55 RT	
12	2003+65.43	23.36 RT	
8	2003+88.47	28.00 RT	
9	2004+04.47	28.00 RT	
7	2004+22.47	28.00 RT	
7	2004+32.47	28.00 RT	
7	2004+32.47	38.00 RT	
14.5	2004+36.47	102.00 RT	
7	2004+36.47	92.00 RT	
8	2004+39.09	23.09 RT	
7	2004+41.47	28.00 RT	
6	2004+41.47	33.00 RT	
12	2004+43.88	116.18 RT	
7	2004+51.47	28.00 RT	
7	2004+60.47	107.00 RT	
6	2004+66.47	29.00 RT	
7	2004+72.47	92.00 RT	
7	2004+72.47	107.00 RT	
6	2004+99.47	33.00 LT	
6	2005+03.47	28.00 LT	
6	2005+07.47	12.00 LT	
7	2005+09.47	28.00 RT	
6	2005+27.47	97.00 RT	
7	2005+32.47	28.00 RT	
6	2005+37.47	28.00 RT	
10	2005+36.97	128.58 RT	
8	2005+39.26	28.22 RT	
8	2005+40.01	27.40 RT	
10	2005+41.30	30.96 RT	
9	2005+50.47	28.00 RT	
8	2005+51.47	97.00 RT	
10	2005+52.47	28.00 RT	
7	2005+66.47	97.00 RT	
8.5	2005+70.47	28.00 LT	
12	2005+71.84	31.71 RT	
10	2005+88.22	26.59 RT	
7	2005+90.47	22.00 LT	
6	2005+94.47	37.00 LT	
7	2006+02.47	27.00 LT	
12	2006+05.47	28.00 RT	
10	2006+06.83	27.83 RT	
7	2006+07.47	34.00 LT	
6	2006+11.95	30.44 RT	
7.5	2006+14.47	31.00 LT	
11	2006+14.47	25.00 LT	
14	2006+23.47	28.00 RT	
8	2006+28.47	33.00 RT	
10	2006+45.47	39.00 RT	
8	2006+45.47	32.00 RT	
6	2006+49.47	23.00 RT	
9	2006+55.47	38.00 RT	
7	2006+57.47	18.00 LT	
9.5	2006+57.47	13.00 LT	
6	2006+65.47	23.00 RT	

2010110 TREE REMOVAL (6 TO 15 UNITS DIAMETER) (CONTINUE)			
UNIT	LOCATION	OFFSET	REMARKS
	US 20		
13	2006+65.47	36.00 RT	
8	2006+65.47	39.00 RT	
7	2006+70.47	42.00 LT	
13	2006+70.47	32.00 LT	
13	2006+70.47	27.00 LT	
7	2006+87.47	23.00 RT	
10	2014+59.47	97.00 RT	
12	2026+50.46	27.56 RT	
8	2036+70.20	27.11 LT	
7.5	2037+26.17	17.71 RT	
7	2039+61.51	12.20 RT	
7	2039+61.51	13.20 RT	
7	2048+86.37	43.54 LT	
6	2048+96.41	43.69 LT	
8	2052+52.00	32.10 LT	
8	2129+99.20	90.46 LT	
8	2129+98.09	108.61 LT	
4	2130+10.09	88.82 LT	
8	2130+10.50	96.17 LT	
6	2130+10.57	96.49 LT	
6	2130+17.66	67.52 LT	
8	2130+18.57	69.97 LT	
8	2130+17.18	88.75 LT	
10	2130+17.37	91.20 LT	
6	2130+17.58	91.82 LT	
8	2130+18.16	91.42 LT	
8	2130+18.57	69.97 LT	
5	2130+18.67	67.81 LT	
14	2130+25.98	71.83 LT	
6	2130+28.15	96.24 LT	
14	2130+34.47	70.31 LT	
6	2130+34.68	74.25 LT	
8	2130+34.87	72.70 LT	
10	2130+35.44	72.69 LT	
12	2130+48.88	70.89 LT	
8	2130+47.76	84.63 LT	
4	2130+47.91	85.48 LT	
6	2141+30.01	19.32 RT	
6.5	2141+42.97	18.56 RT	
14	2149+03.95	5.05 LT	
7	2149+06.93	9.65 LT	
10	2149+24.85	41.72 LT	
10	2149+28.64	45.03 LT	
12	2149+60.31	29.17 LT	
8.5	2149+69.33	70.21 LT	
10	2150+01.68	35.22 RT	
8	2150+03.05	25.47 RT	
8	2150+10.77	29.79 RT	
6	2150+11.58	32.97 RT	
6	2150+14.45	33.77 RT	
8	2150+15.65	38.60 RT	
6	2150+16.28	45.52 RT	
6	2150+19.48	32.42 RT	
8	2150+21.23	38.73 RT	
6	2150+32.92	46.93 RT	
12.5	2150+39.60	71.97 LT	
7	2152+72.21	75.61 LT	

2010110 TREE REMOVAL (6 TO 15 UNITS DIAMETER) (CONTINUED)			
UNIT	LOCATION	OFFSET	REMARKS
	US 20		
6	2152+89.29	38.28 LT	
7	2154+27.94	60.32 LT	
24	2155+36.95	121.50 RT	TWIN
5	2157+12.48	229.65 RT	
5	2157.74.77	230.94 RT	
10	2163+71.22	113.03 RT	
10	2164+36.28	39.79 RT	
12	2164+57.58	36.79 RT	
12	2164+58.77	15.93 RT	
12	2165+18.11	10.38 RT	
12	2165+19.89	31.28 RT	
12	2165+41.04	30.71 RT	
1535	TOTAL		



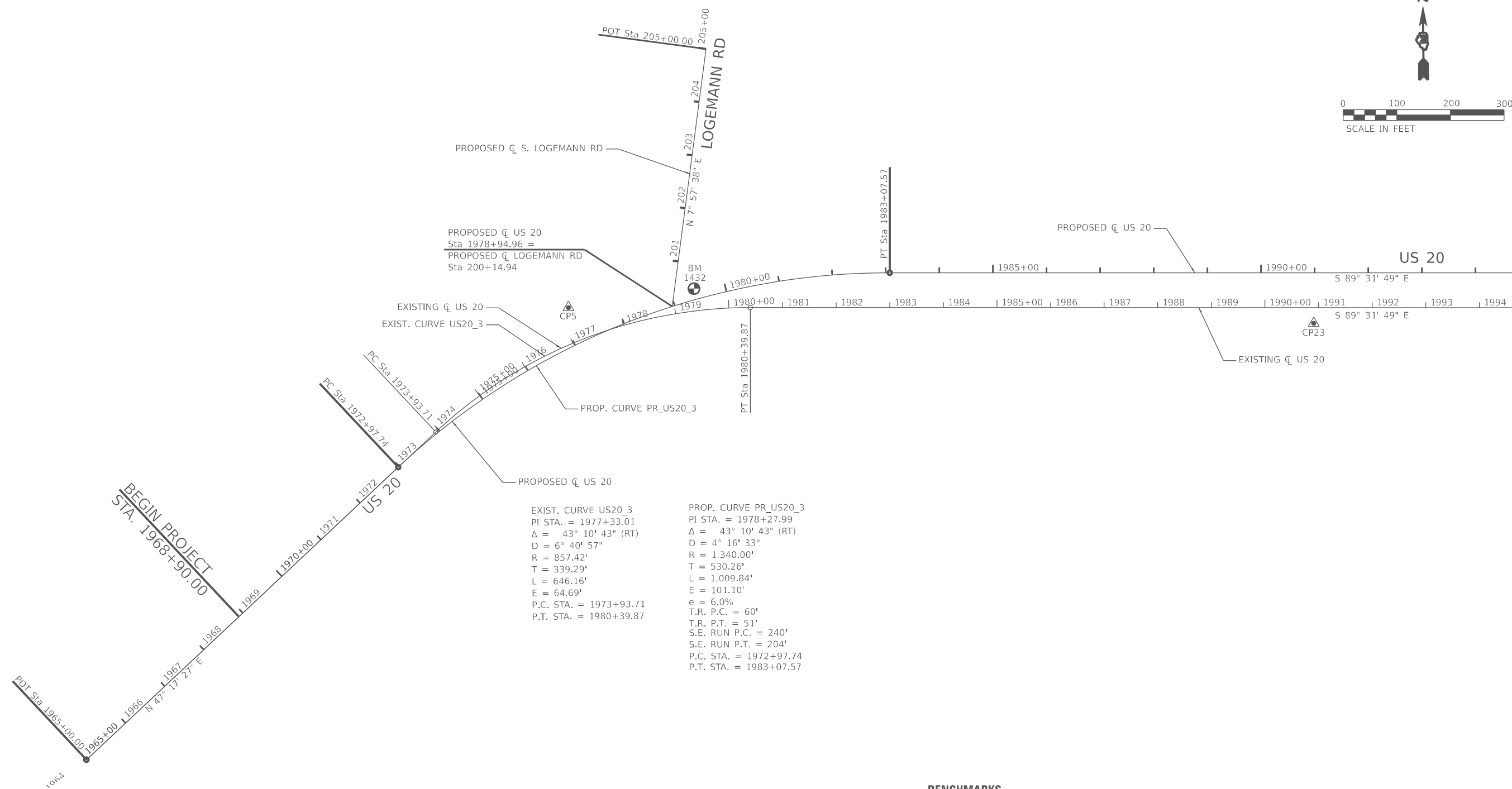
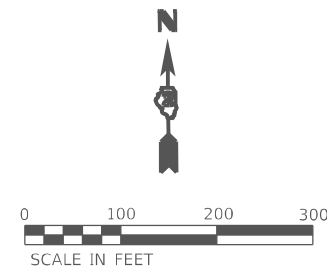
USER NAME = Cristian.Rosas	DESIGNED - MMW	REVISED -
PLOT SCALE = \$SCALES	CHECKED - ALM	REVISED -
PLOT DATE = 8/8/2024	DATE - 12/10/2021	REVISED -

**STATE OF ILLINOIS
DEPARTMENT OF TRANSPORTATION**

SCHEDULE OF QUANTITIES

SCALE: NTS	SHEET	OF	SHEETS	STA.	TO STA.
------------	-------	----	--------	------	---------

F.A.P. RTE.	SECTION	COUNTY	TOTAL SHEETS	SHEET NO.
301	(24)TR	JODAVIESS	32	5
CONTRACT NO. 64U05				
FED. ROAD DIST. NO.	ILLINOIS	FED. AID PROJECT		



MATCHLINE STA 1995+00.00

BENCHMARKS

- BM 1427 - ELEV 933.19 - SURVEY DISK SET IN TOP OF CONCRETE MONUMENT, STAMPED G5427, AT NE CORNER OF BINKLEY RD AND CANYON PARK RD.
- BM 1431 - ELEV 947.67 - SURVEY DISK SET IN TOP OF CONCRETE MONUMENT, STAMPED G5431, AT SW CORNER OF WELCH RD AND LOGEMANN RD.
- BM 1432 - ELEV 929.89 - SURVEY DISK SET IN TOP OF CONCRETE MONUMENT, STAMPED G5432, AT NE CORNER OF US 20 AND LOGEMANN RD.

MODEL: Default
 FILE: \\nailes.pw.state.il.gov\dot\documents\DOT_0_csr\District_2\ORR\Projects\64U05\Program_Development\Studies & Plans\Design\CADD\CADDsheets\02_64U05-sht-ATR01.dgn

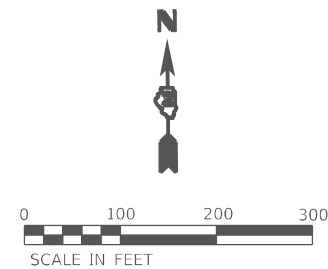


USER NAME = Cristian.Rosas	DESIGNED - MMW	REVISED -
PLOT SCALE = \$SCALE\$	DRAWN - NWS	REVISED -
PLOT DATE = 8/8/2024	CHECKED - ALM	REVISED -
	DATE - 7/27/2021	REVISED -

STATE OF ILLINOIS
DEPARTMENT OF TRANSPORTATION

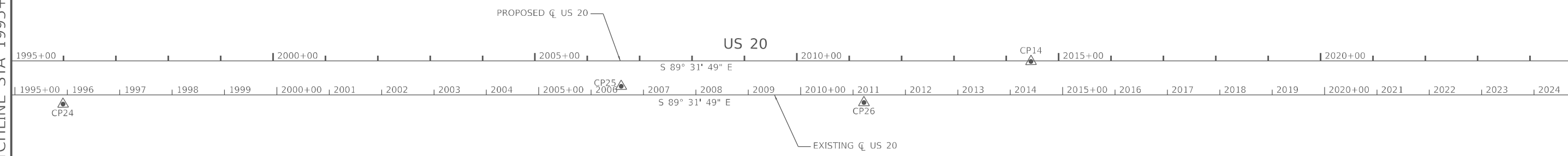
ALIGNMENT, TIES, AND BENCHMARKS		
SCALE: 1" = 100'	SHEET 1 OF 10 SHEETS	STA. 1965+00.00 TO STA. 1995+00.00

F.A.P. RTE.	SECTION	COUNTY	TOTAL SHEETS	SHEET NO.
301	(24)TR	JODAVIESS	32	7
CONTRACT NO. 64U05				
ILLINOIS FED. AID PROJECT				



MATCHLINE STA 1995+00.00

MATCHLINE STA 2025+00.00



MODEL: Default
FILE: \\nailes.pw.us\dot-cw-beckley.com\P\INDOT\Documents\DOT_0_csa\District_2\ORD Projects\64U05\Program Development\Studies & Plans\Design\CADD\CAD\Sheet02_64U05-sta-CTR02.dgn



USER NAME = Cristian,Rosas	DESIGNED - MMW	REVISED -
	DRAWN - NWS	REVISED -
PLOT SCALE = \$SCALE\$	CHECKED - ALM	REVISED -
PLOT DATE = 8/8/2024	DATE - 7/27/2021	REVISED -

**STATE OF ILLINOIS
DEPARTMENT OF TRANSPORTATION**

ALIGNMENT, TIES, AND BENCHMARKS

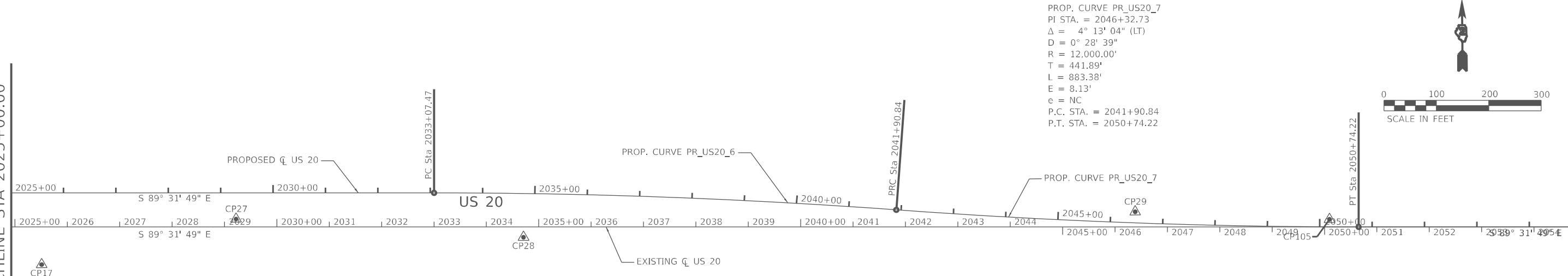
SCALE: 1" = 100' SHEET 2 OF 10 SHEETS STA. 1995+00.00 TO STA. 2025+00.00

F.A.P. RTE.	SECTION	COUNTY	TOTAL SHEETS	SHEET NO.
301	(24)TR	JODAVIESS	32	8
CONTRACT NO. 64U05				
ILLINOIS FED. AID PROJECT				

MODEL Path: \\rsandh.com\rsandh\dot_0_ces\DOT\Documents\DOT_0_ces\DOT\dot_2\08D Projects\64U05\Program Development\Studies & Plans\Design\CADD\CAD\Sheets\02_64U05-shc-ATB03.dwg
 FILE NAME: \\rsandh.com\rsandh\dot_0_ces\DOT\Documents\DOT_0_ces\DOT\dot_2\08D Projects\64U05\Program Development\Studies & Plans\Design\CADD\CAD\Sheets\02_64U05-shc-ATB03.dwg

MATCHLINE STA 2025+00.00

MATCHLINE STA 2055+00.00



PROP. CURVE PR_US20_6
 PI STA. = 2037+49.36
 Δ = 4° 13' 04" (RT)
 D = 0° 28' 39"
 R = 12,000.00'
 T = 441.89'
 L = 883.38'
 E = 8.13'
 e = NC
 P.C. STA. = 2033+07.47
 P.T. STA. = 2041+90.84

PROP. CURVE PR_US20_7
 PI STA. = 2046+32.73
 Δ = 4° 13' 04" (LT)
 D = 0° 28' 39"
 R = 12,000.00'
 T = 441.89'
 L = 883.38'
 E = 8.13'
 e = NC
 P.C. STA. = 2041+90.84
 P.T. STA. = 2050+74.22



USER NAME = Cristian.Rosas	DESIGNED - MMW	REVISED -
PLOT SCALE = \$SCALE\$	DRAWN - NWS	REVISED -
PLOT DATE = 8/8/2024	CHECKED - ALM	REVISED -
	DATE - 7/27/2021	REVISED -

STATE OF ILLINOIS
DEPARTMENT OF TRANSPORTATION

ALIGNMENT, TIES, AND BENCHMARKS

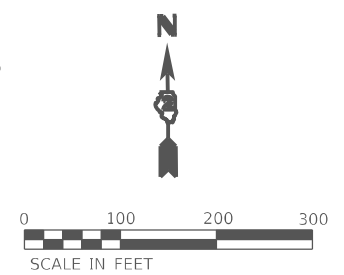
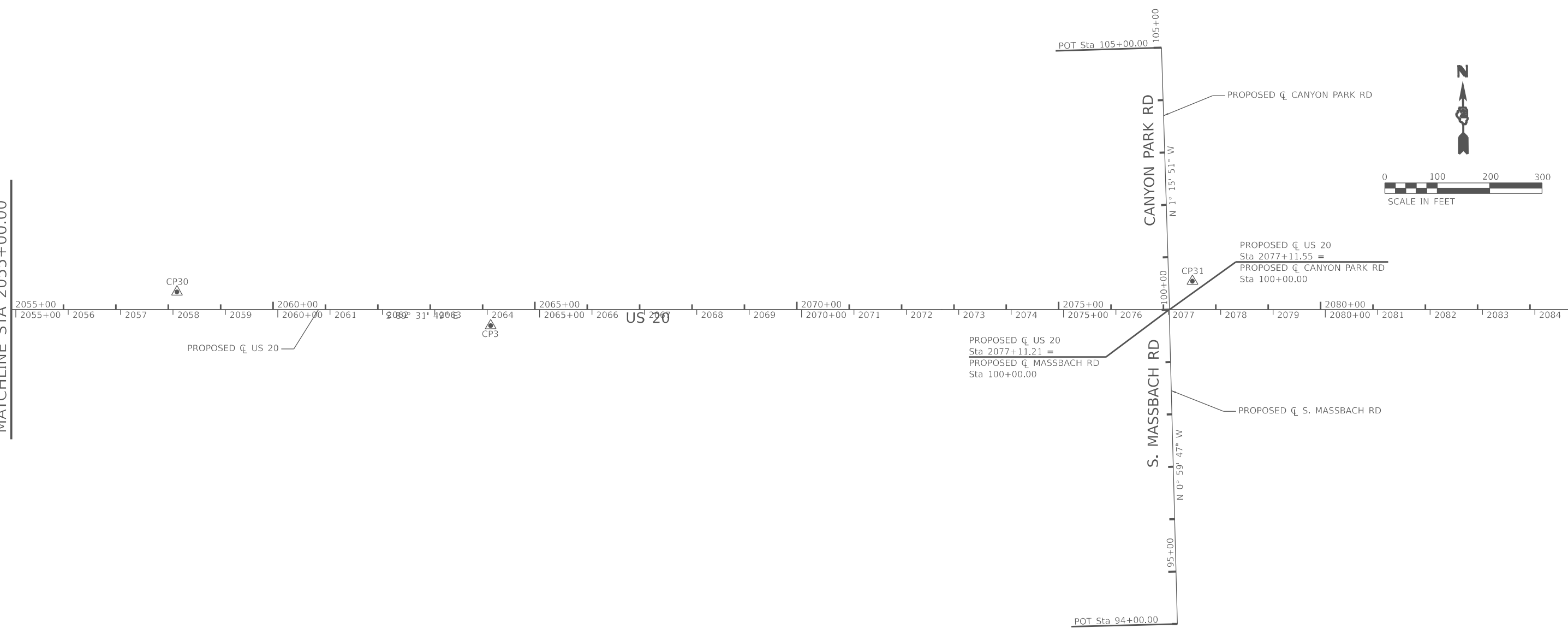
SCALE: 1" = 100' SHEET 3 OF 10 SHEETS STA. 2025+00.00 TO STA. 2055+00.00

F.A.P. RTE.	SECTION	COUNTY	TOTAL SHEETS	SHEET NO.
301	(24)TR	JODAVIESS	32	9
CONTRACT NO. 64U05				
ILLINOIS FED. AID PROJECT				

MODEL: Default
 FILE: \\MAILSrv01\dist-cw-beckley.com\PIV\DOT\Documents\DOT_0_csa\District_2\ORBD_projects\64U05\Program_Development\Studies & Plans\Design\CADD\CAD\Sheet\02_64U05-sht-ATR04.dgn

MATCHLINE STA 2055+00.00

MATCHLINE STA 2085+00.00



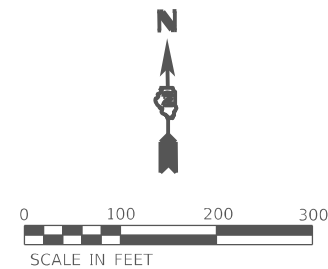
USER NAME = Cristian,Rosas	DESIGNED - MMW	REVISED -
PLOT SCALE = \$SCALE\$	DRAWN - NWS	REVISED -
PLOT DATE = 8/8/2024	CHECKED - ALM	REVISED -
	DATE - 7/27/2021	REVISED -

**STATE OF ILLINOIS
 DEPARTMENT OF TRANSPORTATION**

ALIGNMENT, TIES, AND BENCHMARKS

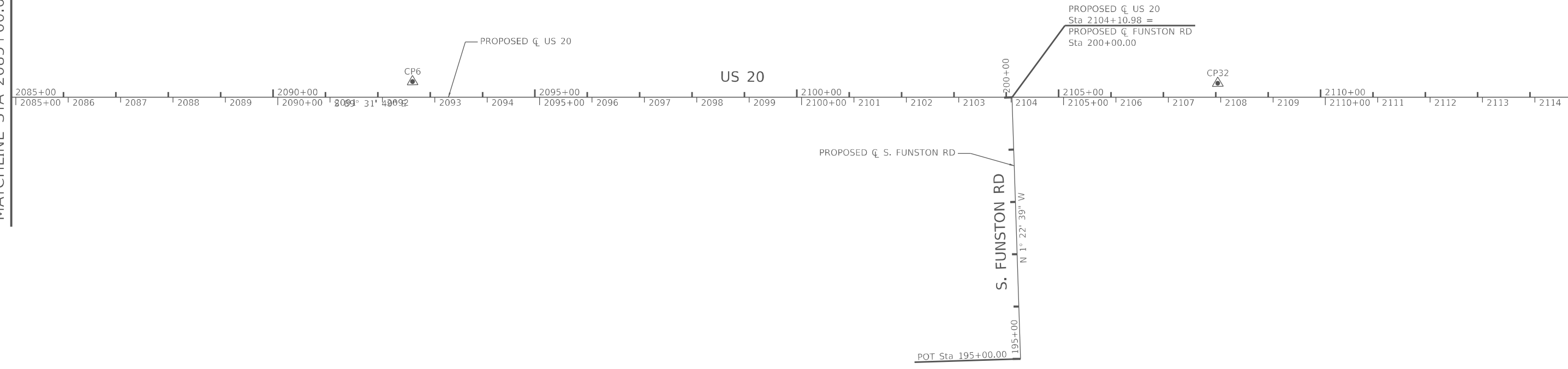
SCALE: 1" = 100' SHEET 4 OF 10 SHEETS STA. 2055+00.00 TO STA. 2085+00.00

F.A.P. RTE.	SECTION	COUNTY	TOTAL SHEETS	SHEET NO.
301	(24)TR	JODAVIESS	32	10
CONTRACT NO. 64U05				
ILLINOIS FED. AID PROJECT				



MATCHLINE STA 2085+00.00

MATCHLINE STA 2115+00.00



MODEL: Default
FILE: \\MAILSrv01\dist-cw-beckley.com\P\INDOT\Documents\DOT_0_csr\District_2\08D_projects\64U05\Program_Development\Studies_&_Plans\Design\CADD\CAD\Sheet02_64U05-sta-2105.dgn



USER NAME = Cristian.Rosas	DESIGNED - MMW	REVISED -
	DRAWN - NWS	REVISED -
PLOT SCALE = 5/SCALE5	CHECKED - ALM	REVISED -
PLOT DATE = 8/8/2024	DATE - 7/27/2021	REVISED -

**STATE OF ILLINOIS
DEPARTMENT OF TRANSPORTATION**

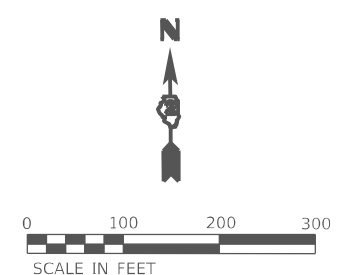
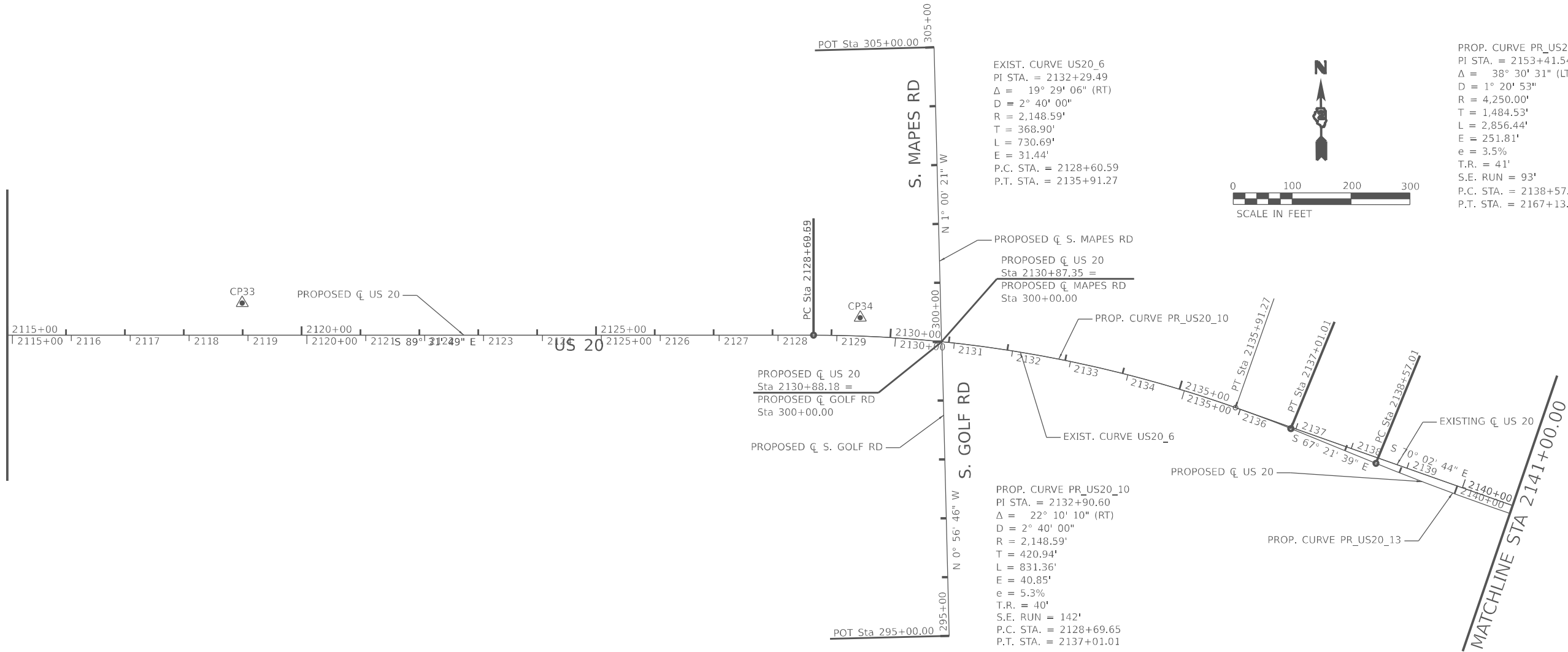
ALIGNMENT, TIES, AND BENCHMARKS

SCALE: 1" = 100' SHEET 5 OF 10 SHEETS STA. 2085+00.00 TO STA. 2115+00.00

F.A.P. RTE.	SECTION	COUNTY	TOTAL SHEETS	SHEET NO.
301	(24)TR	JODAVIESS	32	11
CONTRACT NO. 64U05				
ILLINOIS FED. AID PROJECT				

MODEL: Default
 FILE: \\nailes.pw.state.il.us\dot\documents\DOT_0_cas\District_2\ORD Projects\64U05\Program Development\Studies & Plans\Design\CADD\CADD\Sheet02_64U05-sht-ATB06.dgn

MATCHLINE STA 2115+00.00



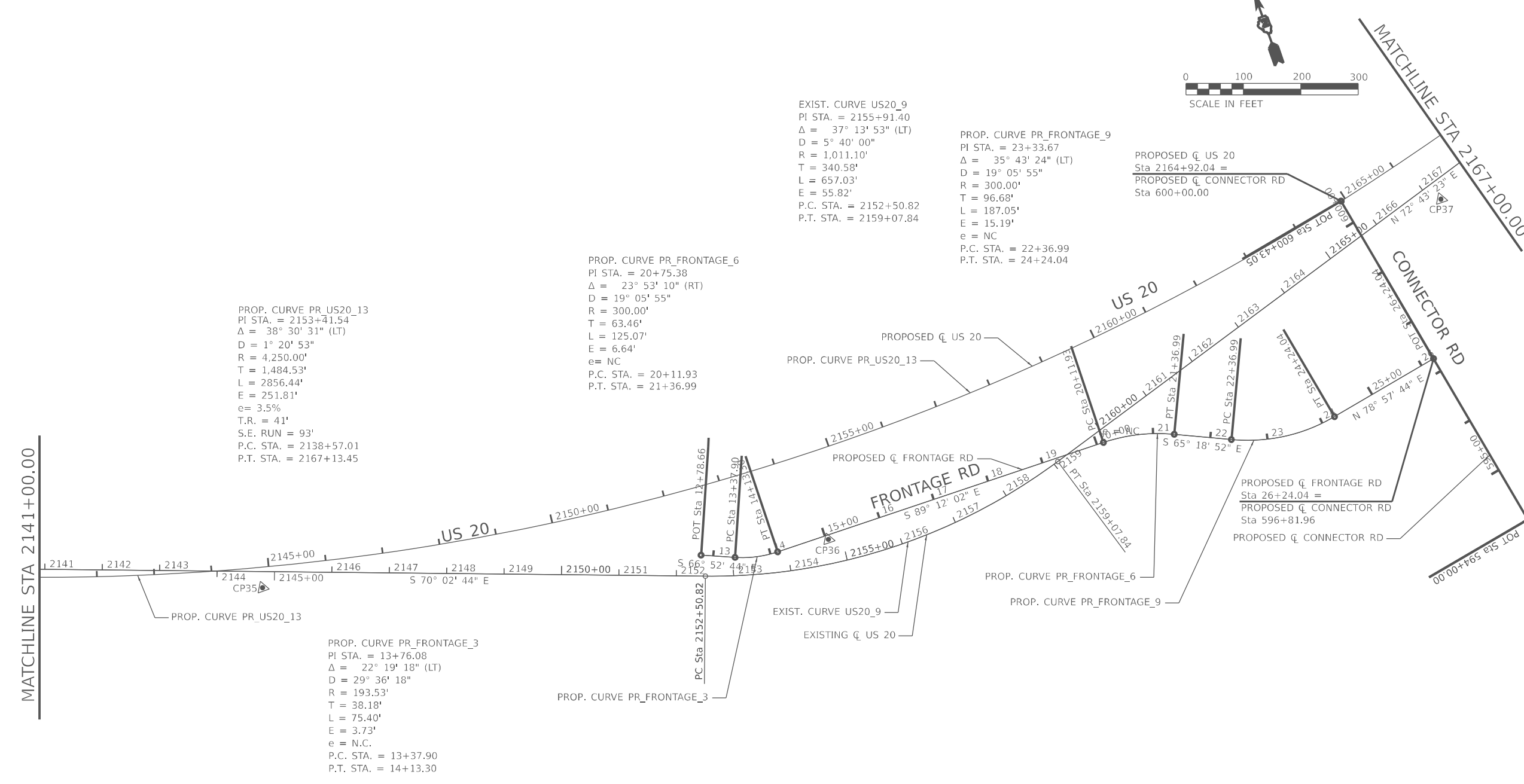
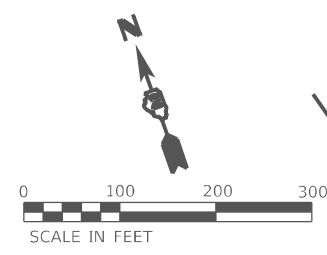
USER NAME = Cristian.Rosas	DESIGNED - MMW	REVISED -
PLOT SCALE = \$SCALES	DRAWN - NWS	REVISED -
PLOT DATE = 8/8/2024	CHECKED - ALM	REVISED -
	DATE - 7/27/2021	REVISED -

**STATE OF ILLINOIS
 DEPARTMENT OF TRANSPORTATION**

ALIGNMENT, TIES, AND BENCHMARKS

SCALE: 1" = 100' SHEET 6 OF 10 SHEETS STA. 2115+00.00 TO STA. 2141+00.00

F.A.P. RTE.	SECTION	COUNTY	TOTAL SHEETS	SHEET NO.
301	(24)TR	JODAVIESS	32	12
CONTRACT NO. 64U05				
ILLINOIS FED. AID PROJECT				



PROP. CURVE PR_US20_13
 PI STA. = 2153+41.54
 $\Delta = 38^\circ 30' 31''$ (LT)
 D = $1^\circ 20' 53''$
 R = 4,250.00'
 T = 1,484.53'
 L = 2856.44'
 E = 251.81'
 e = 3.5%
 T.R. = 41'
 S.E. RUN = 93'
 P.C. STA. = 2138+57.01
 P.T. STA. = 2167+13.45

PROP. CURVE PR_FRONTAGE_6
 PI STA. = 20+75.38
 $\Delta = 23^\circ 53' 10''$ (RT)
 D = $19^\circ 05' 55''$
 R = 300.00'
 T = 63.46'
 L = 125.07'
 E = 6.64'
 e = NC
 P.C. STA. = 20+11.93
 P.T. STA. = 21+36.99

EXIST. CURVE US20_9
 PI STA. = 2155+91.40
 $\Delta = 37^\circ 13' 53''$ (LT)
 D = $5^\circ 40' 00''$
 R = 1,011.10'
 T = 340.58'
 L = 657.03'
 E = 55.82'
 P.C. STA. = 2152+50.82
 P.T. STA. = 2159+07.84

PROP. CURVE PR_FRONTAGE_9
 PI STA. = 23+33.67
 $\Delta = 35^\circ 43' 24''$ (LT)
 D = $19^\circ 05' 55''$
 R = 300.00'
 T = 96.68'
 L = 187.05'
 E = 15.19'
 e = NC
 P.C. STA. = 22+36.99
 P.T. STA. = 24+24.04

PROPOSED \bar{C} US 20
 Sta 2164+92.04 =
 PROPOSED \bar{C} CONNECTOR RD
 Sta 600+00.00

PROPOSED \bar{C} FRONTAGE RD
 Sta 26+24.04 =
 PROPOSED \bar{C} CONNECTOR RD
 Sta 596+81.96

PROP. CURVE PR_FRONTAGE_3
 PI STA. = 13+76.08
 $\Delta = 22^\circ 19' 18''$ (LT)
 D = $29^\circ 36' 18''$
 R = 193.53'
 T = 38.18'
 L = 75.40'
 E = 3.73'
 e = N.C.
 P.C. STA. = 13+37.90
 P.T. STA. = 14+13.30

PROP. CURVE PR_FRONTAGE_3

EXIST. CURVE US20_9
 EXISTING \bar{C} US 20

MODEL: Default
 FILE: \\nailes-pw\ltd-cw-beckley.com\PI\DOT\Documents\DOT_0_csr\District_2\ORBD_projects\64U05\Program_Development\Studies & Plans\Design\CADD\CAD\res02_64U05-sht-ATR07.dgn



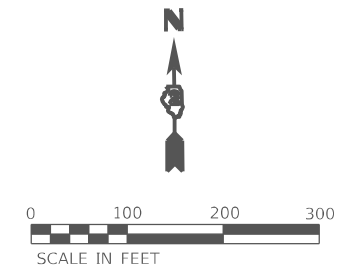
USER NAME = Cristian.Rosas	DESIGNED - MMW	REVISED -
PLOT SCALE = \$SCALE\$	DRAWN - NWS	REVISED -
PLOT DATE = 8/8/2024	CHECKED - ALM	REVISED -
	DATE - 7/27/2021	REVISED -

**STATE OF ILLINOIS
DEPARTMENT OF TRANSPORTATION**

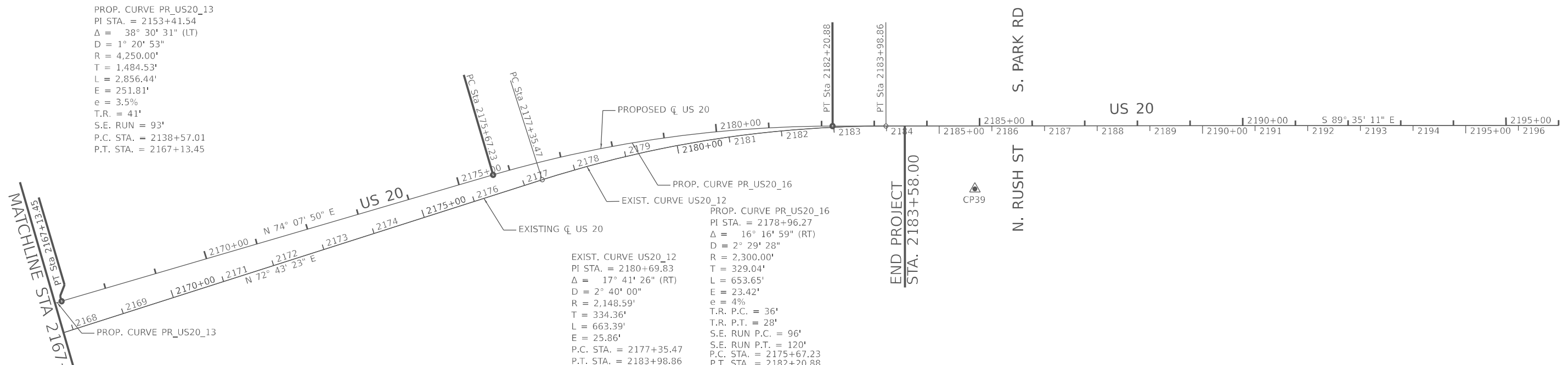
ALIGNMENT, TIES, AND BENCHMARKS

SCALE: 1" = 100' SHEET 7 OF 10 SHEETS STA. 2141+00.00 TO STA. 2167+00.00

F.A.P. RTE.	SECTION	COUNTY	TOTAL SHEETS	SHEET NO.
301	(24)TR	JODAVIESS	32	13
CONTRACT NO. 64U05				
ILLINOIS FED. AID PROJECT				



PROP. CURVE PR_US20_13
 PI STA. = 2153+41.54
 $\Delta = 38^\circ 30' 31''$ (LT)
 $D = 1^\circ 20' 53''$
 $R = 4,250.00'$
 $T = 1,484.53'$
 $L = 2,856.44'$
 $E = 251.81'$
 $e = 3.5\%$
 $T.R. = 41'$
 $S.E. RUN = 93'$
 $P.C. STA. = 2138+57.01$
 $P.T. STA. = 2167+13.45$



EXIST. CURVE US20_12
 PI STA. = 2180+69.83
 $\Delta = 17^\circ 41' 26''$ (RT)
 $D = 2^\circ 40' 00''$
 $R = 2,148.59'$
 $T = 334.36'$
 $L = 663.39'$
 $E = 25.86'$
 $P.C. STA. = 2177+35.47$
 $P.T. STA. = 2183+98.86$

PROP. CURVE PR_US20_16
 PI STA. = 2178+96.27
 $\Delta = 16^\circ 16' 59''$ (RT)
 $D = 2^\circ 29' 28''$
 $R = 2,300.00'$
 $T = 329.04'$
 $L = 653.65'$
 $E = 23.42'$
 $e = 4\%$
 $T.R. P.C. = 36'$
 $T.R. P.T. = 28'$
 $S.E. RUN P.C. = 96'$
 $S.E. RUN P.T. = 120'$
 $P.C. STA. = 2175+67.23$
 $P.T. STA. = 2182+20.88$

EX. US 20 ALIGNMENT COORDINATES			
POINT	STATION	NORTHING	EASTING
PC	1973+93.71	2,072,653.25	2,317,601.66
PI	1977+33.01	2,072,883.39	2,317,850.97
PT	1980+39.87	2,072,880.61	2,318,190.25
PC	2128+60.59	2,072,759.14	2,333,010.47
PI	2132+29.49	2,072,756.11	2,333,379.36
PT	2135+91.27	2,072,630.22	2,333,726.12
PC	2152+50.82	2,072,063.86	2,335,286.03
PI	2155+91.4	2,071,947.63	2,335,606.16
PT	2159+07.84	2,072,048.78	2,335,931.38
PC	2177+35.47	2,072,591.56	2,337,676.55
PI	2180+69.83	2,072,690.86	2,337,995.82
PT	2183+98.86	2,072,688.45	2,338,330.16

PROP. US 20 ALIGNMENT COORDINATES			
POINT	STATION	NORTHING	EASTING
POT	1917+67.48	2,068,837.11	2,313,467.47
POT	1965+00.00	2,072,047.07	2,316,944.95
PC	1972+97.74	2,072,588.16	2,317,531.14
PI	1978+27.99	2,072,947.82	2,317,920.77
PT	1983+07.57	2,072,943.47	2,318,451.01
PC	2033+07.47	2,072,902.49	2,323,450.74
PI	2037+49.36	2,072,898.87	2,323,892.61
PT	2041+90.84	2,072,862.76	2,324,333.02
PC	2041+90.84	2,072,862.76	2,324,333.02
PI	2046+32.73	2,072,826.65	2,324,773.43
PT	2050+74.22	2,072,823.03	2,325,215.30
PC	2128+69.65	2,072,759.14	2,333,010.47
PI	2132+90.6	2,072,755.69	2,333,431.40
PT	2137+01.01	2,072,593.66	2,333,819.91
PC	2138+57.01	2,072,533.61	2,333,963.89
PI	2153+41.54	2,071,962.17	2,335,334.03
PT	2167+13.45	2,072,368.12	2,336,761.98
PC	2175+67.23	2,072,601.58	2,337,583.22
PI	2178+96.27	2,072,691.56	2,337,899.72
PT	2182+20.88	2,072,689.18	2,338,228.75
POT	2200+00.00	2,072,676.34	2,340,007.83
PROP. LOGEMANN RD ALIGNMENT COORDINATES			
POINT	STATION	NORTHING	EASTING
PI	200+14.94	2,072,883.77	2,318,044.38
POT	205+00.00	2,073,364.16	2,318,111.56
PROP. CANYON PARK RD ALIGNMENT COORDINATES			
POINT	STATION	NORTHING	EASTING
PI	100+00.00	2,072,801.41	2,327,852.54
POT	105+00.00	2,073,301.29	2,327,841.51

PROP. MASSBACH RD ALIGNMENT COORDINATES			
POINT	STATION	NORTHING	EASTING
POT	94+00.00	2,072,201.51	2,327,862.64
PI	100+00.00	2,072,801.42	2,327,852.20
PROP. FUNSTON RD ALIGNMENT COORDINATES			
POINT	STATION	NORTHING	EASTING
POT	195+00.00	2,072,279.43	2,330,563.90
PI	200+00.00	2,072,779.29	2,330,551.89
PROP. MAPES RD ALIGNMENT COORDINATES			
POINT	STATION	NORTHING	EASTING
PI	300+00.00	2,072,746.34	2,333,227.70
POT	305+00.00	2,073,246.26	2,333,218.92
PROP. GOLF RD ALIGNMENT COORDINATES			
POINT	STATION	NORTHING	EASTING
POT	295+00.00	2,072,246.32	2,333,236.78
PI	300+00.00	2,072,746.25	2,333,228.52
PROP. FRONTAGE RD ALIGNMENT COORDINATES			
POINT	STATION	NORTHING	EASTING
POT	12+78.66	2,072,100.86	2,335,291.08
PC	13+37.09	2,072,077.60	2,335,345.55
PI	13+76.08	2,072,062.60	2,335,380.67
PT	12+13.30	2,072,062.07	2,335,418.85
PC	20+11.93	2,072,053.72	2,336,017.42
PI	20+75.38	2,072,053.72	2,336,017.42
PT	21+36.99	2,072,026.33	2,336,138.53
PC	22+36.99	2,071,984.57	2,336,229.39
PI	23+33.67	2,071,944.19	2,336,317.23
PT	24+24.04	2,071,962.70	2,336,412.12
PI	26+24.04	2,072,000.99	2,336,608.42
PROP. CONNECTOR RD ALIGNMENT COORDINATES			
POINT	STATION	NORTHING	EASTING
POT	594+00.00	2,071,724.25	2,336,662.40
PI	600+00.00	2,072,313.15	2,336,547.53

MODEL: Default
 FILE: \\msfcs-01\idc-01\work\208D\Projects\64U05\Program_Development\Studies & Plans\Design\CADD\CADDsheet02_64U05-cta-08.dgn
 PLOT DATE = 8/8/2024

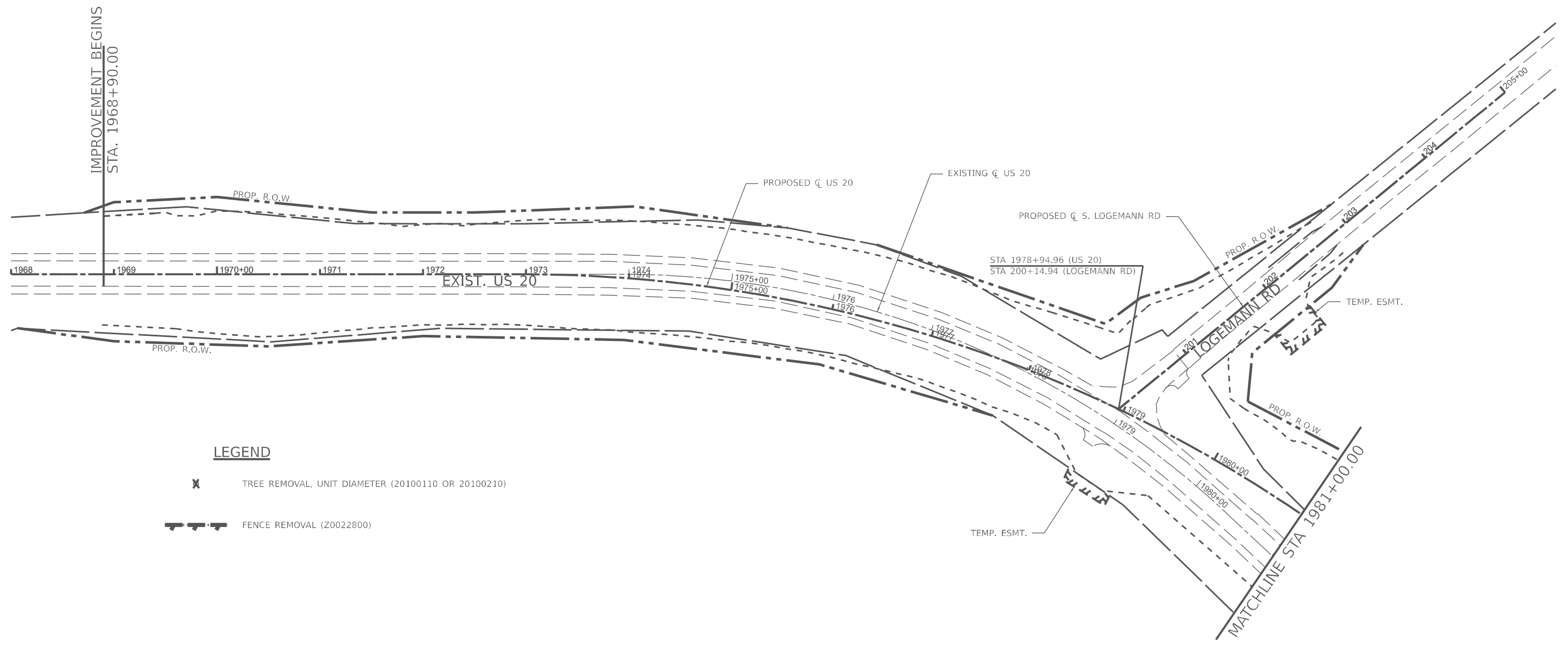
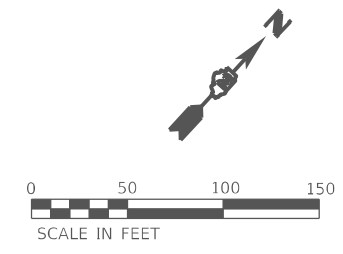


USER NAME = Cristian.Rosas	DESIGNED - MMW	REVISED -
PLOT SCALE = \$SCALE\$	DRAWN - NWS	REVISED -
PLOT DATE = 8/8/2024	CHECKED - ALM	REVISED -
	DATE - 7/27/2021	REVISED -

**STATE OF ILLINOIS
 DEPARTMENT OF TRANSPORTATION**

ALIGNMENT, TIES, AND BENCHMARKS		
SCALE: 1" = 100'	SHEET 8	OF 10 SHEETS
STA. 2167+00.00	TO STA. 2196+00.00	

F.A.P. RTE. 301	SECTION (24)TR	COUNTY JODAVIESS	TOTAL SHEETS 32	SHEET NO. 14
ILLINOIS FED. AID PROJECT			CONTRACT NO. 64U05	



LEGEND

- TREE REMOVAL, UNIT DIAMETER (20100110 OR 20100210)
- FENCE REMOVAL (Z0022800)

MODEL: Default
 FILE: \\na1151-pw\idest-cw-bead\rs\com\p\w\dot\documents\DOT_0_csr\District_2\080 Projects\64U05\Program Development\Studies & Plans\Design\CADD\CAD\Sheet\02_64U05-strcmov010.dgn



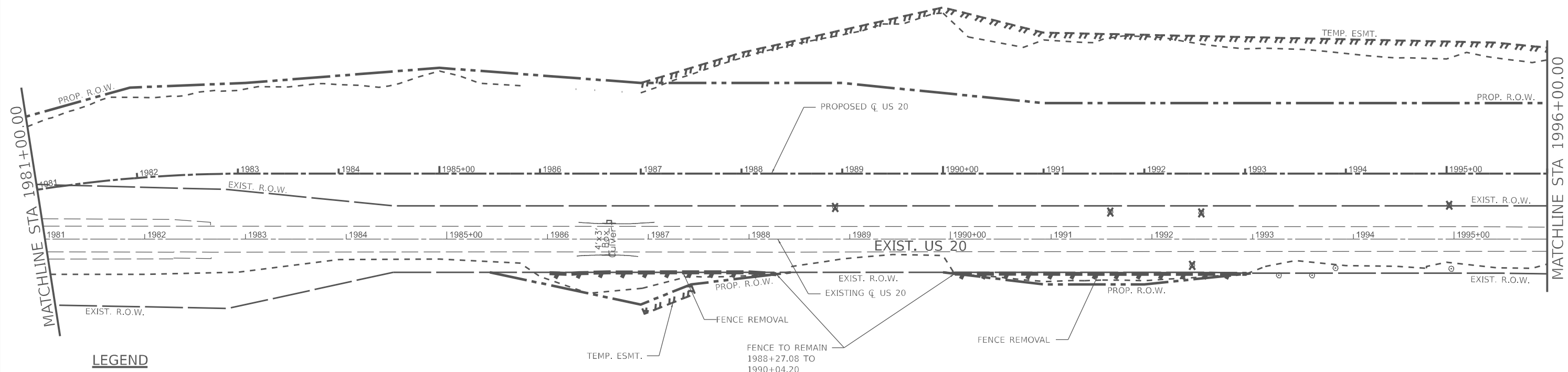
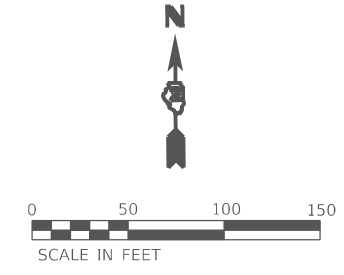
USER NAME = Cristian.Rosas	DESIGNED - MMW	REVISED -
	DRAWN - NWS	REVISED -
PLOT SCALE = \$SCALE\$	CHECKED - ALM	REVISED -
PLOT DATE = 8/8/2024	DATE - 7/27/2021	REVISED -

**STATE OF ILLINOIS
DEPARTMENT OF TRANSPORTATION**



REMOVAL PLAN

SCALE: 1" = 50' SHEET \$RP02\$ OF \$RPTL\$ SHEETS STA. 1968+00.00 TO STA. 1981+00.00

F.A.P. RTE.	SECTION	COUNTY	TOTAL SHEETS	SHEET NO.
301	(24)TR	JODAVIESS	32	17
CONTRACT NO. 64U05			ILLINOIS FED. AID PROJECT	



LEGEND

-  TREE REMOVAL, UNIT DIAMETER (20100110 OR 20100210)
-  FENCE REMOVAL (Z0022800)

MODEL: Default
 FILE: \\nailes-pw\lisc-new-bead\ay.com\PI\DOT\Documents\DOT_0_csr\District_2\08D_projects\64U05\Program_Development\Studies_&_Plans\Design\CADD\CAD\Drawings\02_64U05-srctremov02.dwg



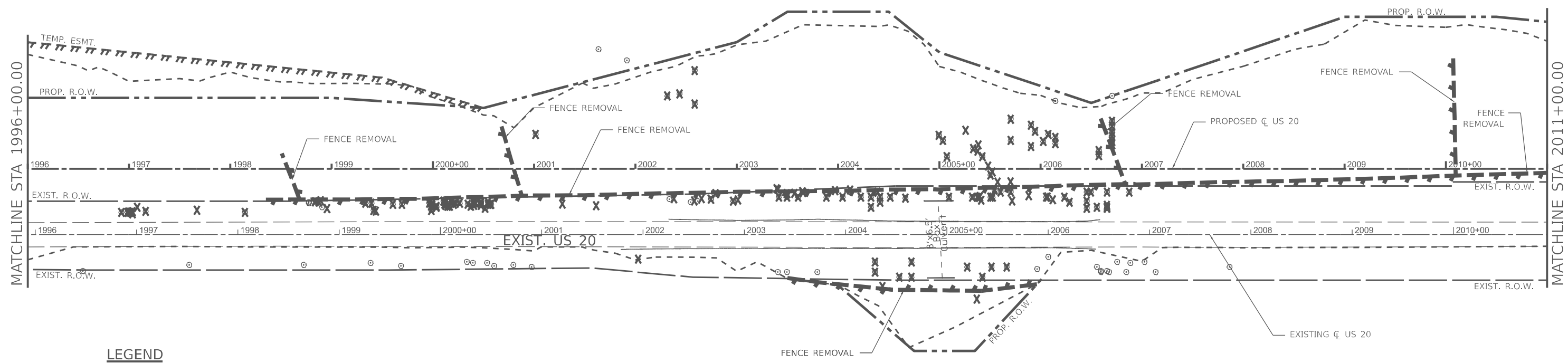
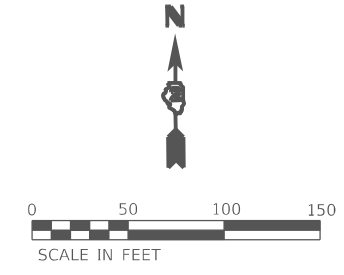
USER NAME = Cristian,Rosas	DESIGNED - MMW	REVISED -
DRAWN - NWS	REVISIONS -	
PLOT SCALE = 5SCALE5	CHECKED - ALM	REVISED -
PLOT DATE = 8/8/2024	DATE - 7/27/2021	REVISED -

**STATE OF ILLINOIS
DEPARTMENT OF TRANSPORTATION**

REMOVAL PLAN

SCALE: 1" = 50' SHEET 3 OF 3 OF 3 SHEETS STA. 1981+00.00 TO STA. 1996+00.00

F.A.P. RTE. 301	SECTION (24)TR	COUNTY JODAVIESS	TOTAL SHEETS 32	SHEET NO. 18
CONTRACT NO. 64U05			ILLINOIS FED. AID PROJECT	



LEGEND

- TREE REMOVAL, UNIT DIAMETER (20100110 OR 20100210)
- FENCE REMOVAL (Z0022800)

MODEL: Default
 FILE: \\nailes-pw\fileshare\bea\file\com\p\w\dot\Documents\DOT_0_csr\District_2\08D_projects\64U05\Program_Development\Studies_&_Plans\Design\CADD\CADD\Drawings\02_64U05-structure\03.dwg



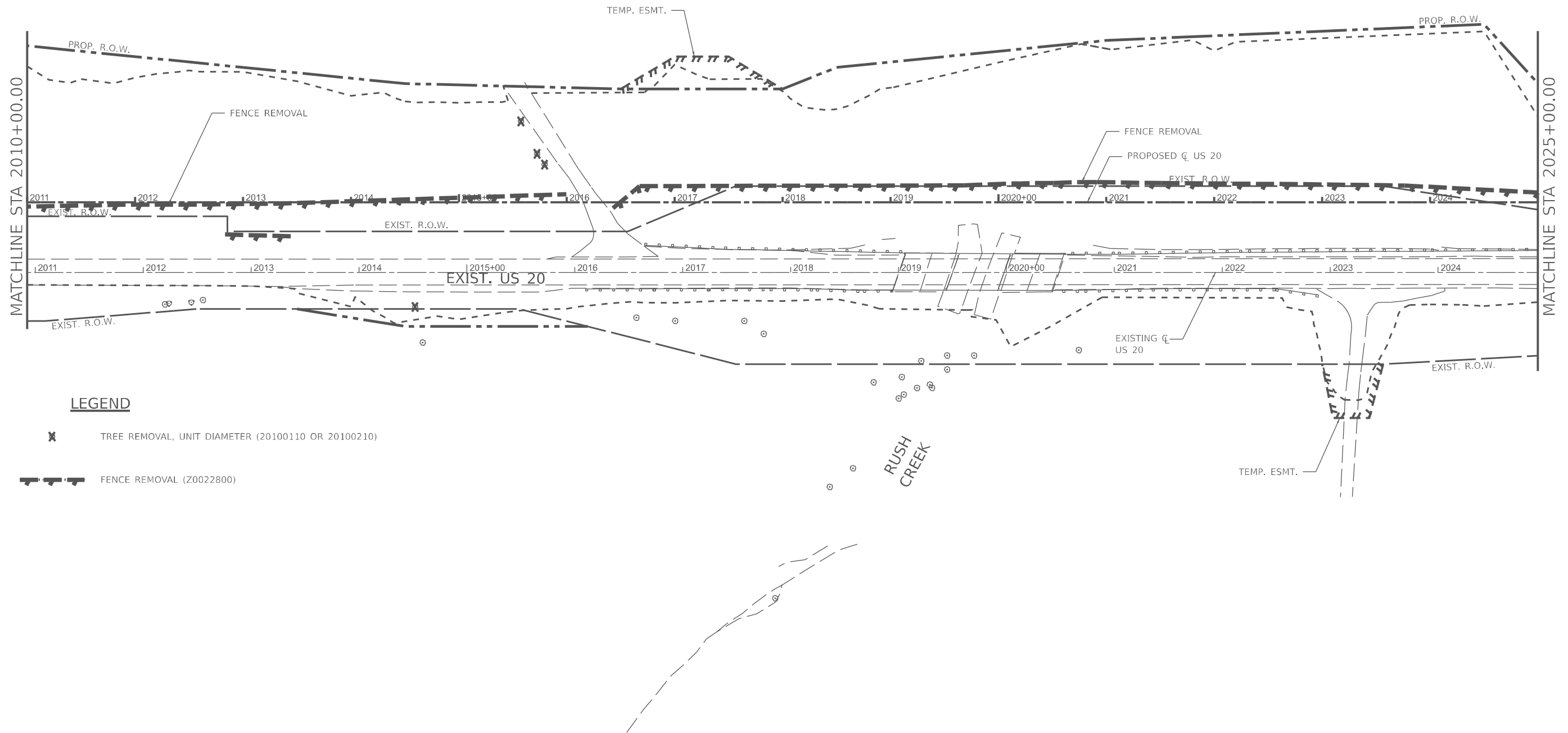
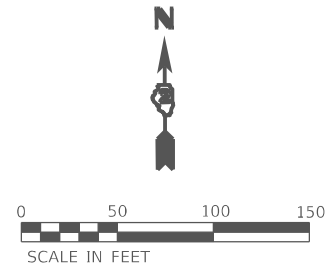
USER NAME = Cristian.Rosas	DESIGNED - MMW	REVISED -
PLOT SCALE = 5/SCALE5	DRAWN - NWS	REVISED -
PLOT DATE = 8/8/2024	CHECKED - ALM	REVISED -
	DATE - 7/27/2021	REVISED -

**STATE OF ILLINOIS
DEPARTMENT OF TRANSPORTATION**

REMOVAL PLAN

SCALE: 1" = 50' SHEET 301 OF 32 SHEETS STA. 1996+00.00 TO STA. 2011+00.00

F.A.P. RTE. 301	SECTION (24)TR	COUNTY JODAVIESS	TOTAL SHEETS 32	SHEET NO. 19
CONTRACT NO. 64U05			ILLINOIS FED. AID PROJECT	



LEGEND

- TREE REMOVAL, UNIT DIAMETER (20100110 OR 20100210)
- FENCE REMOVAL (Z0022800)

MODEL: Default
 FILE: \\nailes.pw.state.il.us\dot\documents\DOT_0_csr\District_2\ORRD_projects\64U05\Program_Development\Studies_&_Plans\Design\CADD\CAD\Drawings\02_64U05-srctremoval.dwg



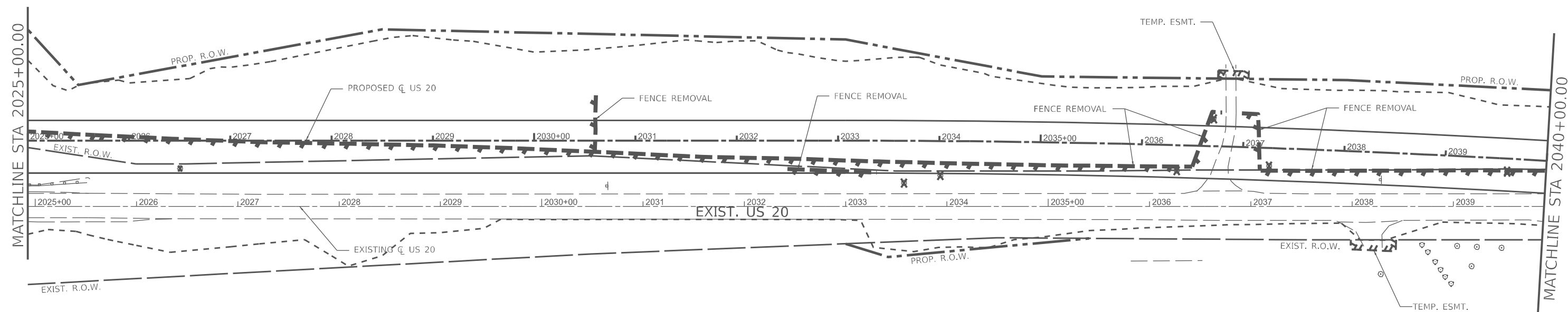
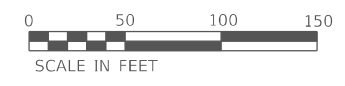
USER NAME = Cristian,Rosas	DESIGNED - MMW	REVISED -
PLOT SCALE = \$SCALE\$	DRAWN - NWS	REVISED -
PLOT DATE = 8/8/2024	CHECKED - ALM	REVISED -
	DATE - 7/27/2021	REVISED -

**STATE OF ILLINOIS
DEPARTMENT OF TRANSPORTATION**


REMOVAL PLAN

SCALE: 1" = 50' SHEET\$RP05\$ OF \$RPTL\$SHEETS STA. 2010+00.00 TO STA. 2025+00.00

F.A.P. RTE.	SECTION	COUNTY	TOTAL SHEETS	SHEET NO.
301	(24)TR	JODAVIESS	32	20
CONTRACT NO. 64U05				
ILLINOIS FED. AID PROJECT				



LEGEND

-  TREE REMOVAL, UNIT DIAMETER (20100110 OR 20100210)
-  FENCE REMOVAL (Z0022800)

MODEL: Default
 FILE: \\nailes-pw\fileshare\bea\paw.com\p\w\dot\Documents\DOT_0_csr\District_2\080 Projects\64U05\Program Development\Studies & Plans\Design\CD\CD\Drawings\02_64U05-structure\05.dgn



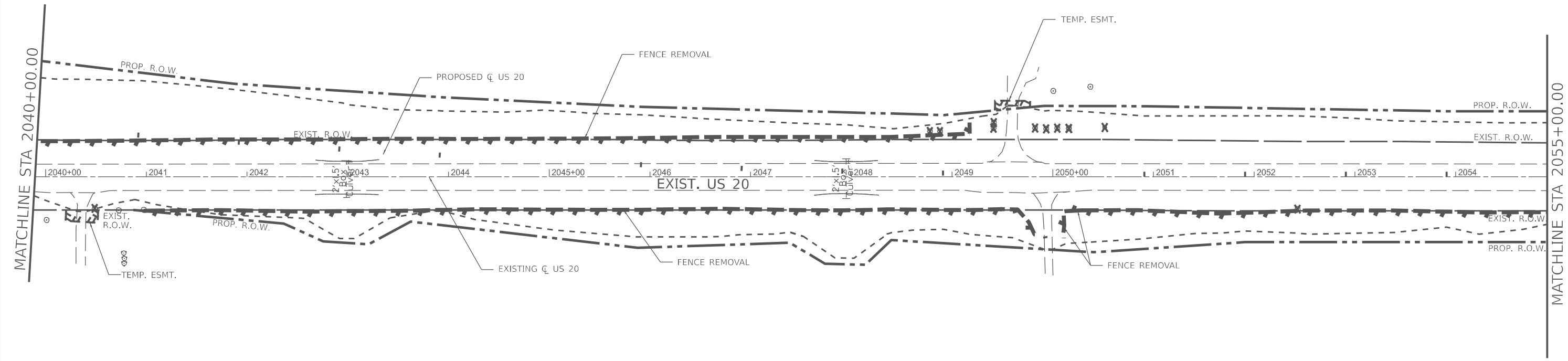
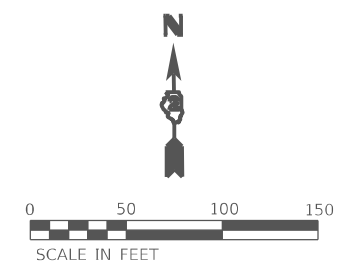
USER NAME = Cristian,Rosas	DESIGNED - MMW	REVISED -
	DRAWN - NWS	REVISED -
PLOT SCALE = \$SCALE\$	CHECKED - ALM	REVISED -
PLOT DATE = 8/8/2024	DATE - 7/27/2021	REVISED -

**STATE OF ILLINOIS
DEPARTMENT OF TRANSPORTATION**



REMOVAL PLAN

SCALE: 1" = 50' SHEET \$RP06\$ OF \$RPTL\$SHEETS STA. 2025+00.00 TO STA. 2040+00.00

F.A.P. RTE.	SECTION	COUNTY	TOTAL SHEETS	SHEET NO.
301	(24)TR	JODAVIESS	32	21
CONTRACT NO. 64U05				
ILLINOIS FED. AID PROJECT				



LEGEND

-  TREE REMOVAL, UNIT DIAMETER (20100110 OR 20100210)
-  FENCE REMOVAL (Z0022800)

MODEL: Default
 FILE: \\nailes-pw\idest-cw\bea\fw.com\PIV\DOT\Documents\DOT_0_csr\District_2\ORBD_projects\64U05\Program_Development\Studies & Plans\Design\CADD\CAD\Sheet02_64U05-srremov05.dgn



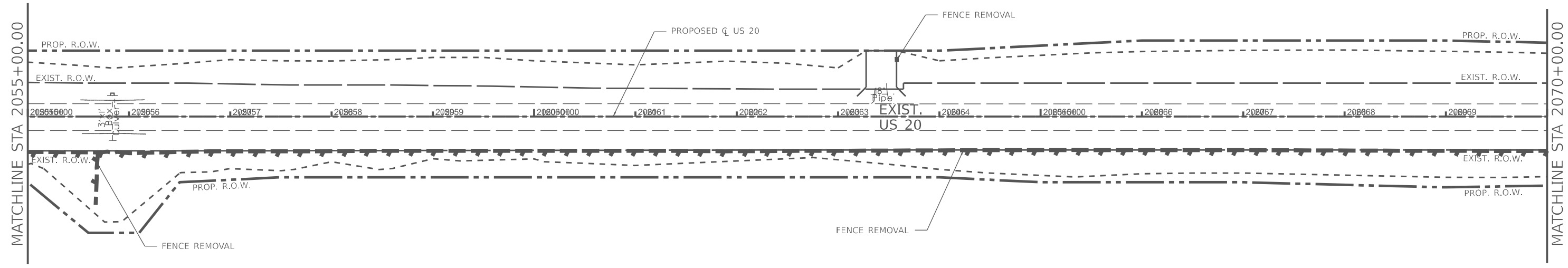
USER NAME = Cristian.Rosas	DESIGNED - MMW	REVISED -
DRAWN - NWS	REVISED -	
PLOT SCALE = \$SCALE\$	CHECKED - ALM	REVISED -
PLOT DATE = 8/8/2024	DATE - 7/27/2021	REVISED -

**STATE OF ILLINOIS
DEPARTMENT OF TRANSPORTATION**

REMOVAL PLAN

SCALE: 1" = 50' SHEET \$RP07\$ OF \$RPTL\$ SHEETS STA. 2040+00.00 TO STA. 2055+00.00

F.A.P. RTE.	SECTION	COUNTY	TOTAL SHEETS	SHEET NO.
301	(24)TR	JODAVIESS	32	22
CONTRACT NO. 64U05				
ILLINOIS FED. AID PROJECT				



LEGEND

- TREE REMOVAL, UNIT DIAMETER (20100110 OR 20100210)
- FENCE REMOVAL (Z0022800)

MODEL: Default
 FILE: \\na1151-pw\idest-cw-bead\p\com\PIV\DOT\Documents\DOT_0_csr\District_2\ORR\Projects\64U05\Program_Development\Studies & Plans\Design\CADD\CADD\Sheet02_64U05-srctremov02.dgn



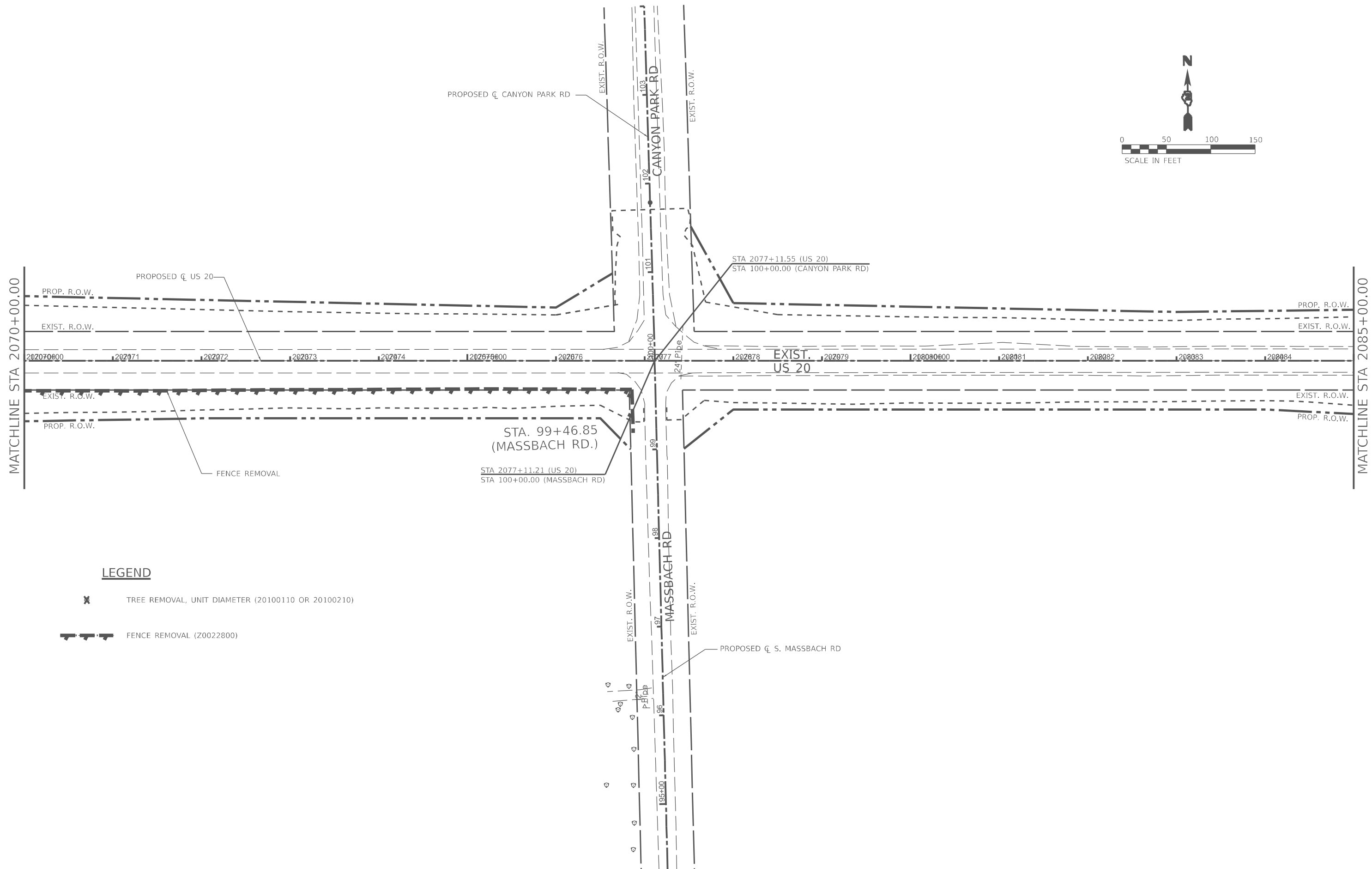
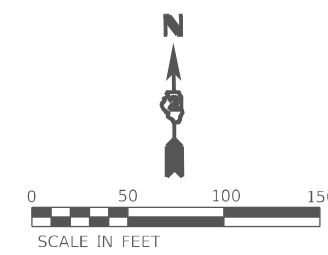
USER NAME = Cristian.Rosas	DESIGNED - MMW	REVISED -
PLOT SCALE = \$SCALE\$	DRAWN - NWS	REVISED -
PLOT DATE = 8/8/2024	CHECKED - ALM	REVISED -
	DATE - 7/27/2021	REVISED -

STATE OF ILLINOIS
DEPARTMENT OF TRANSPORTATION

REMOVAL PLAN

SCALE: 1" = 50' SHEET \$RP08\$ OF \$RPTL\$ SHEETS STA. 2055+00.00 TO STA. 2070+00.00

F.A.P. RTE.	SECTION	COUNTY	TOTAL SHEETS	SHEET NO.
301	(24)TR	JODAVIESS	32	23
CONTRACT NO. 64U05			ILLINOIS FED. AID PROJECT	



LEGEND

- TREE REMOVAL, UNIT DIAMETER (20100110 OR 20100210)
- FENCE REMOVAL (Z0022800)

MODEL: Default
 FILE: \\na1165-pw\l1st-cw-bead\p\com\p\windot\documents\DOT_0_csr\District_2\080\Projects\64U05\Program_Development\Studies & Plans\Design\CADD\CAD\Sheets\02_64U05-str-removal.dwg



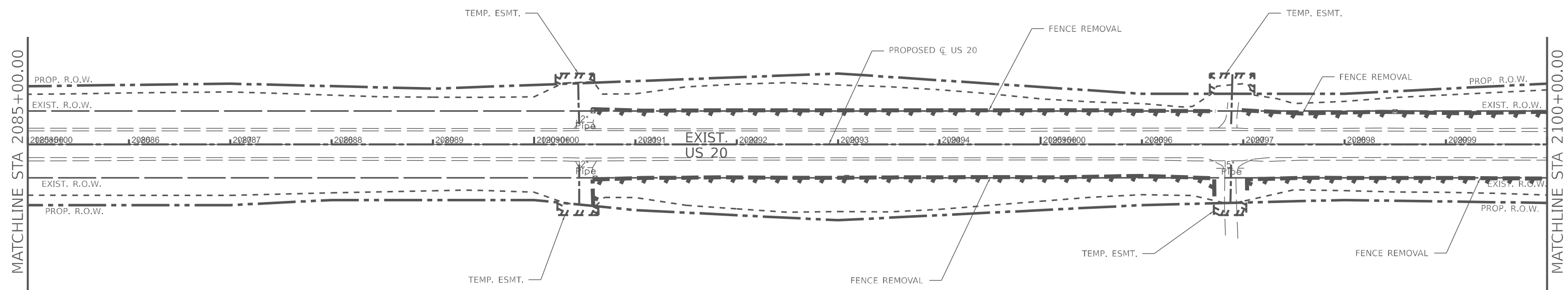
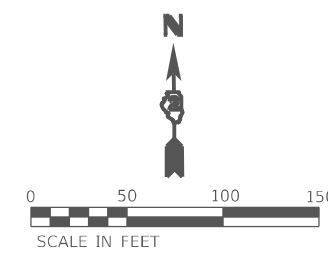
USER NAME = Cristian.Rosas	DESIGNED - MMW	REVISED -
PLOT SCALE = \$SCALE\$	DRAWN - NWS	REVISED -
PLOT DATE = 8/8/2024	CHECKED - ALM	REVISED -
	DATE - 7/27/2021	REVISED -

**STATE OF ILLINOIS
DEPARTMENT OF TRANSPORTATION**

REMOVAL PLAN

SCALE: 1" = 50' SHEET \$RP09\$ OF \$RPTL\$ SHEETS STA. 2070+00.00 TO STA. 2085+00.00

F.A.P. RTE.	SECTION	COUNTY	TOTAL SHEETS	SHEET NO.
301	(24)TR	JODAVIESS	32	24
CONTRACT NO. 64U05			ILLINOIS FED. AID PROJECT	



LEGEND

-  TREE REMOVAL, UNIT DIAMETER (20100110 OR 20100210)
-  FENCE REMOVAL (Z0022800)

MODEL: P:\default
 FILE: \MAILS\paw\list-new-bead\ay.com\PIV\DOT\Documents\DOT_0_csr\District_2\08D_projects\64U05\Program_Development\Studies & Plans\Design\CADD\CAD\Sheet02_64U05-strcemo08.dgn



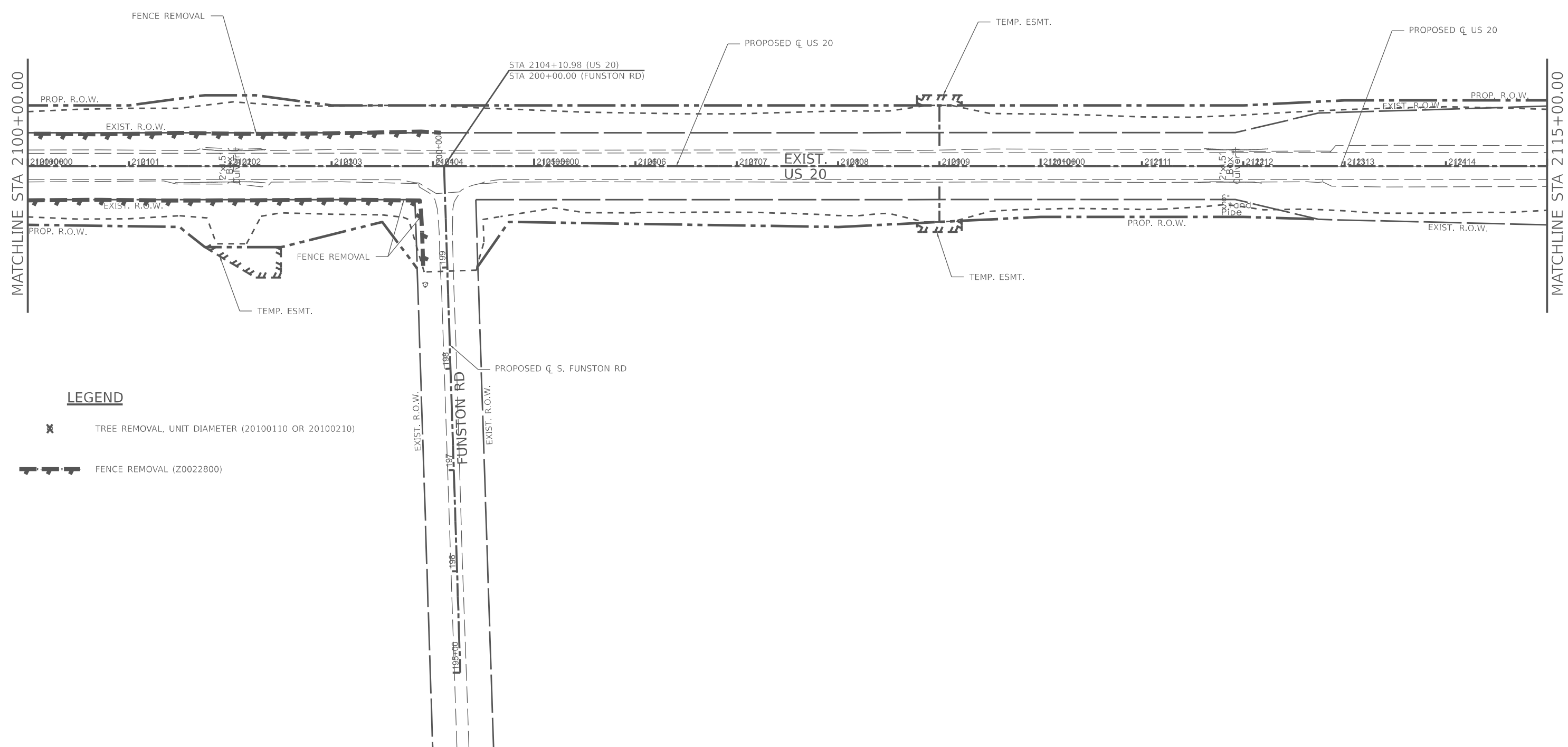
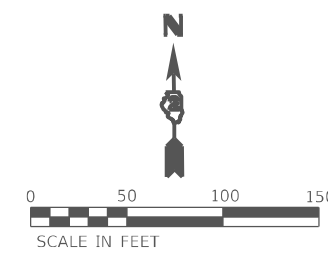
USER NAME = Cristian.Rosas	DESIGNED - MMW	REVISED -
DRAWN - NWS	REVISIONS -	
PLOT SCALE = \$SCALE\$	CHECKED - ALM	REVISED -
PLOT DATE = 8/8/2024	DATE - 7/27/2021	REVISED -

**STATE OF ILLINOIS
DEPARTMENT OF TRANSPORTATION**

REMOVAL PLAN

SCALE: 1" = 50' SHEET \$RP10\$ OF \$RPTL\$ SHEETS STA. 2085+00.00 TO STA. 2100+00.00

F.A.P. RTE. 301	SECTION (24)TR	COUNTY JODAVIESS	TOTAL SHEETS 32	SHEET NO. 25
CONTRACT NO. 64U05			ILLINOIS FED. AID PROJECT	



LEGEND

- TREE REMOVAL, UNIT DIAMETER (20100110 OR 20100210)
- FENCE REMOVAL (Z0022800)

MODEL: Default
 FILE: \\nailes.pwllist-cw.beafray.com\P\W\DOT\Documents\DOT_0_csr\District_2\08D_projects\64U05\Program_Development\Studies & Plans\Design\CADD\CAD\Sheets\02_64U05-strcemoval10.dgn



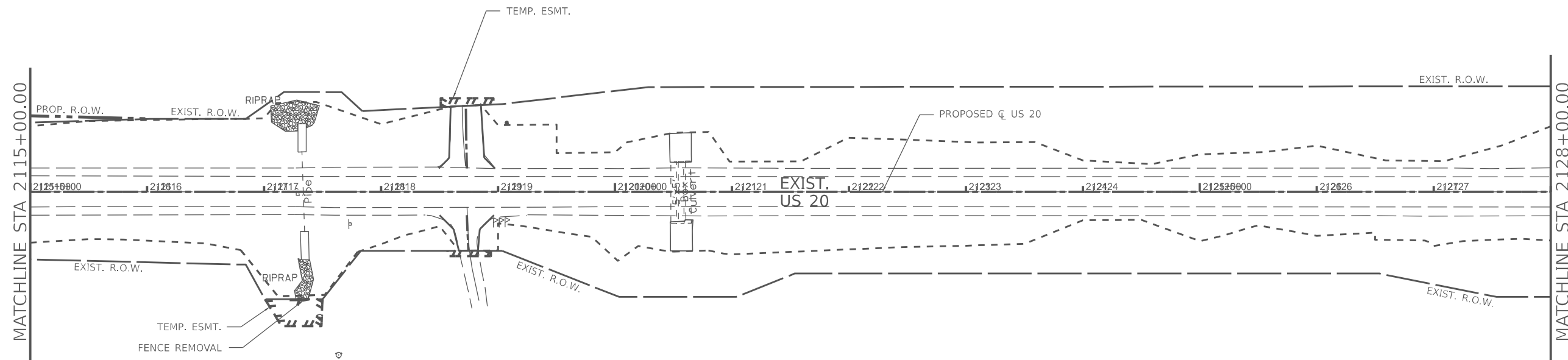
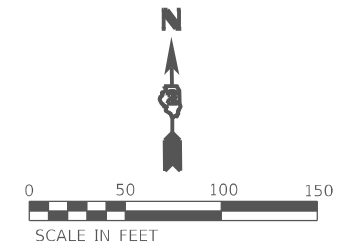
USER NAME = Cristian,Rosas	DESIGNED - MMW	REVISED -
PLOT SCALE = \$SCALE\$	DRAWN - NWS	REVISED -
PLOT DATE = 8/8/2024	CHECKED - ALM	REVISED -
	DATE - 7/27/2021	REVISED -

**STATE OF ILLINOIS
DEPARTMENT OF TRANSPORTATION**



REMOVAL PLAN

SCALE: 1" = 50' SHEET \$RP11\$ OF \$RP15\$ SHEETS STA. 2100+00.00 TO STA. 2115+00.00

F.A.P. RTE.	SECTION	COUNTY	TOTAL SHEETS	SHEET NO.
301	(24)TR	JODAVIESS	32	26
CONTRACT NO. 64U05				
ILLINOIS FED. AID PROJECT				



LEGEND

-  TREE REMOVAL, UNIT DIAMETER (20100110 OR 20100210)
-  FENCE REMOVAL (Z0022800)

MODEL: Default
 FILE: \\nailes.pwllist-cw.beafray.com\P\W\DOT\Documents\DOT_0_csr\District_2\ORR\Projects\64U05\Program_Development\Studies & Plans\Design\CADD\CADD\Sheet\02_64U05-srremoval1.dgn



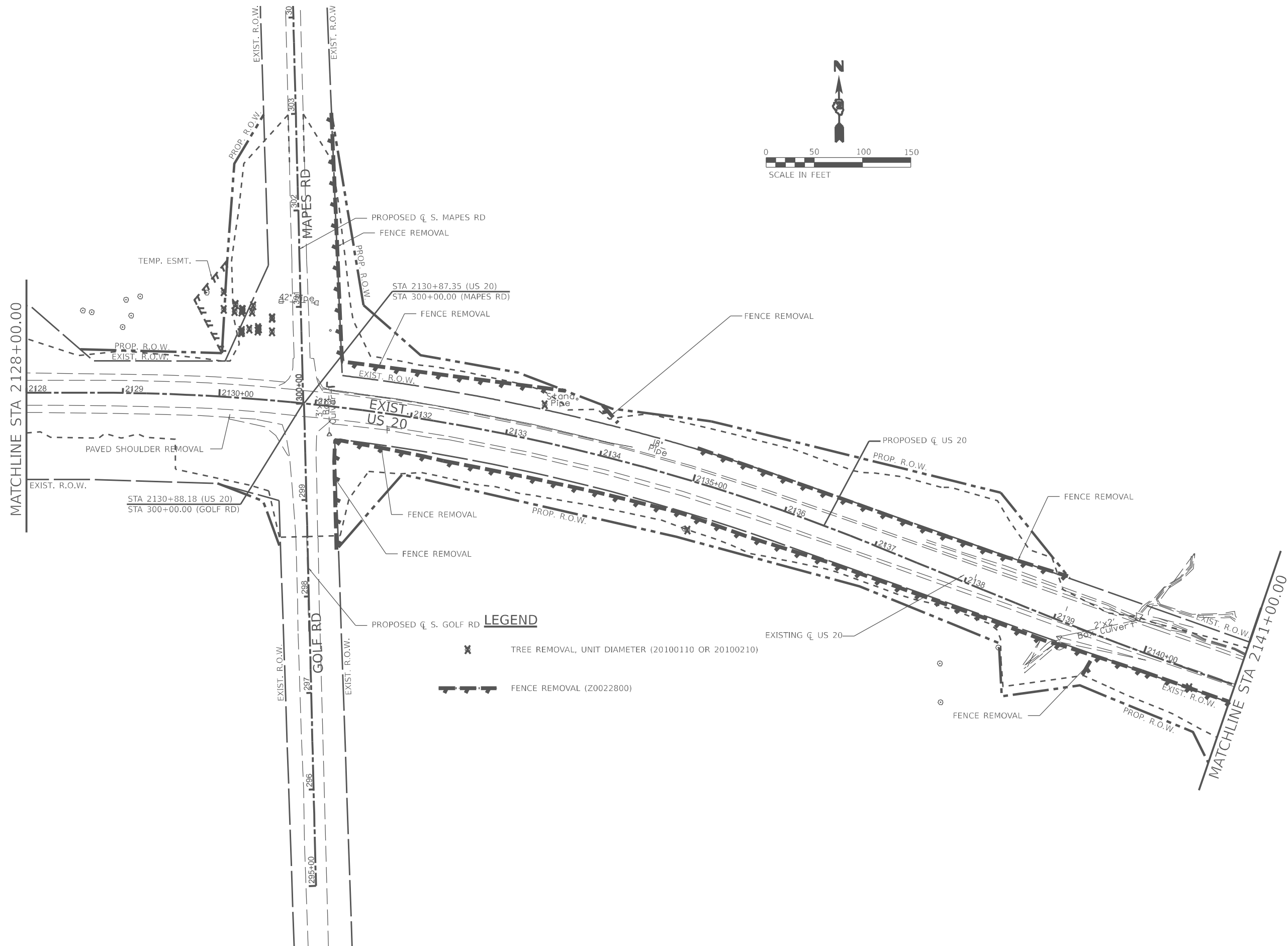
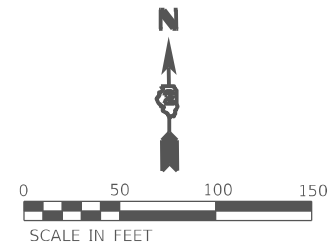
USER NAME = Cristian.Rosas	DESIGNED - MMW	REVISED -
PLOT SCALE = \$SCALE\$	DRAWN - NWS	REVISED -
PLOT DATE = 8/8/2024	CHECKED - ALM	REVISED -
	DATE - 7/27/2021	REVISED -

STATE OF ILLINOIS
DEPARTMENT OF TRANSPORTATION

REMOVAL PLAN

SCALE: 1" = 50' SHEET \$RP12\$ OF \$RPTL\$ SHEETS STA. 2115+00.00 TO STA. 2128+00.00

F.A.P. RTE.	SECTION	COUNTY	TOTAL SHEETS	SHEET NO.
301	(24)TR	JODAVIESS	32	27
CONTRACT NO. 64U05				
ILLINOIS FED. AID PROJECT				



- LEGEND**
- TREE REMOVAL, UNIT DIAMETER (20100110 OR 20100210)
 - FENCE REMOVAL (Z0022800)

MODEL: Default
 FILE: \\mapes\p\11012\11012.dwg
 PROJECT: 21080 Projects\64U05\Program Development\Studies & Plans\Design\CADD\CADD\Sheet02_64U05-srremoval12.dwg



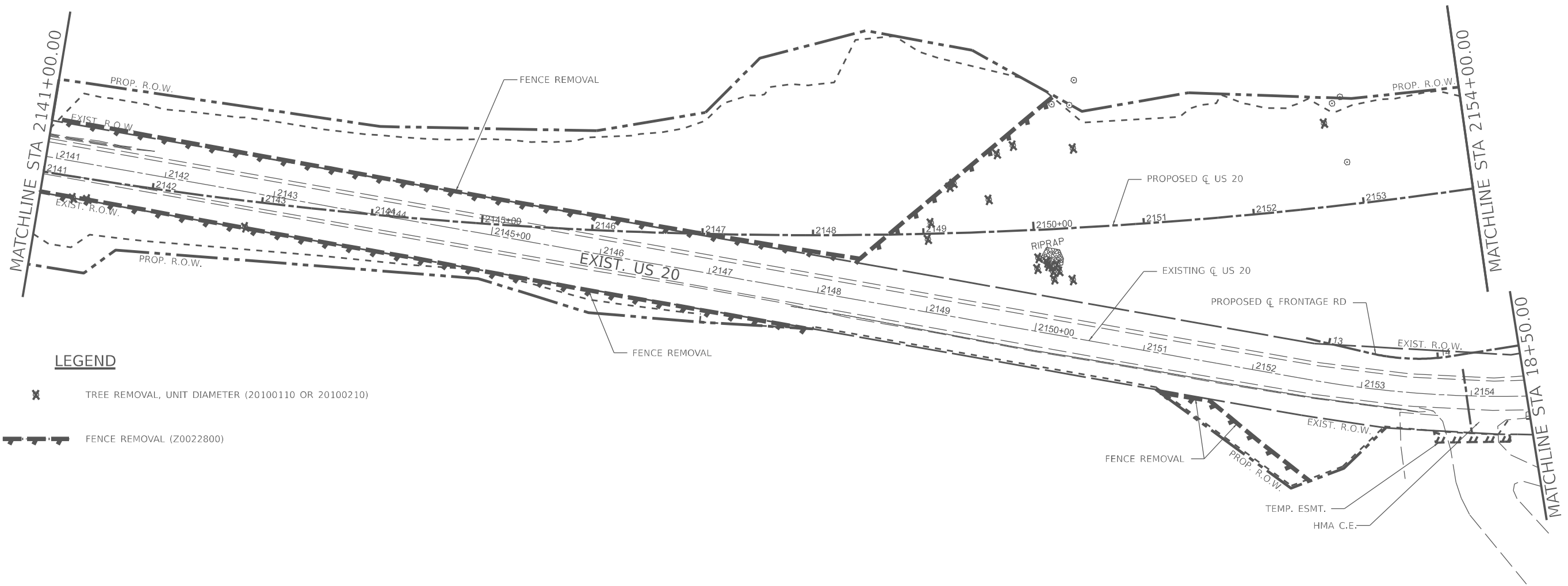
USER NAME = Cristian,Rosas	DESIGNED - MMW	REVISED -
PLOT SCALE = 5SCALE5	DRAWN - NWS	REVISED -
PLOT DATE = 8/8/2024	CHECKED - ALM	REVISED -
	DATE - 7/27/2021	REVISED -

**STATE OF ILLINOIS
DEPARTMENT OF TRANSPORTATION**

REMOVAL PLAN

SCALE: 1" = 50' SHEET 301 OF 32 SHEETS STA. 2128+00.00 TO STA. 2141+00.00

F.A.P. RTE.	SECTION	COUNTY	TOTAL SHEETS	SHEET NO.
301	(24)TR	JODAVIESS	32	28
CONTRACT NO. 64U05				
ILLINOIS FED. AID PROJECT				



LEGEND

- TREE REMOVAL, UNIT DIAMETER (20100110 OR 20100210)
- FENCE REMOVAL (Z0022800)

MODEL: Default
 FILE: \\nailes-pw\ltd-cw\bea\pwy.com\PIV\DOT\Documents\DOT_0_csr\District_2\ORRD_projects\64U05\Program_Development\Studies_&_Rpt\Design\CADD\CAD\Sheet\02_64U05-strremoval13.dgn



USER NAME = Cristian,Rosas	DESIGNED - MMW	REVISED -
PLOT SCALE = \$SCALE\$	DRAWN - NWS	REVISED -
PLOT DATE = 8/8/2024	CHECKED - ALM	REVISED -
	DATE - 7/27/2021	REVISED -

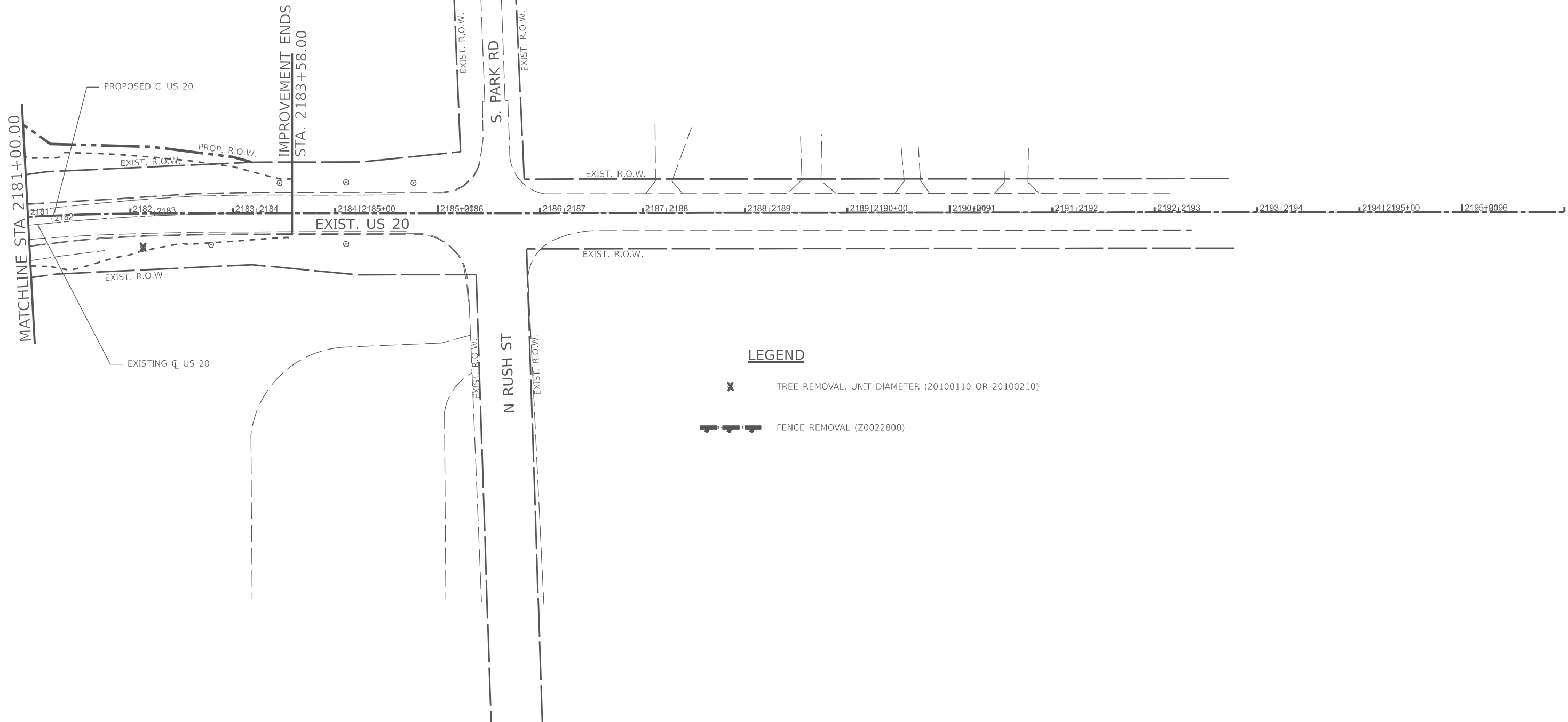
**STATE OF ILLINOIS
DEPARTMENT OF TRANSPORTATION**

REMOVAL PLAN



SCALE: 1" = 50' SHEET \$RP14\$ OF \$RPTL\$ SHEETS STA. 2141+00.00 TO STA. 2154+00.00

F.A.P. RTE.	SECTION	COUNTY	TOTAL SHEETS	SHEET NO.
301	(24)TR	JODAVIESS	32	29
CONTRACT NO. 64U05				
ILLINOIS FED. AID PROJECT				

MODEL: Default
 FILE: \\nailes-pw\idest-cw-bead\p\com\p\w\dot\Documents\DOT_0_csr\District_2\ORBD_projects\64U05\Program_Development\Studies & Plans\Design\CADD\CAD\Sheets\02_64U05-strcmov016.dgn



LEGEND

-  TREE REMOVAL, UNIT DIAMETER (20100110 OR 20100210)
-  FENCE REMOVAL (Z0022800)



USER NAME = Cristian,Rosas	DESIGNED - MMW	REVISED -
PLOT SCALE = 5/SCALE5	DRAWN - NWS	REVISED -
PLOT DATE = 8/8/2024	CHECKED - ALM	REVISED -
	DATE - 7/27/2021	REVISED -

STATE OF ILLINOIS
DEPARTMENT OF TRANSPORTATION

REMOVAL PLAN

SCALE: 1" = 50' SHEET 17 OF 32 SHEETS STA. 2181+00.00 TO STA. END PROJECT

F.A.P. RTE.	SECTION	COUNTY	TOTAL SHEETS	SHEET NO.
301	(24)TR	JODAVIESS	32	32
CONTRACT NO. 64U05			ILLINOIS FED. AID PROJECT	