

STATE OF ILLINOIS
DEPARTMENT OF TRANSPORTATION

F.A.P. RTE.	SECTION	COUNTY	TOTAL SHEETS	SHEET NO.
324	(26VBR-1)SCR	DEKALB	6	1
		ILLINOIS	CONTRACT NO. 66P35	

INDEX OF SHEETS

- COVER SHEET
- GENERAL NOTES
- SUMMARY OF QUANTITIES
- TYPICAL SECTION
- GENERAL PLAN AND ELEVATION FOR STRUCTURE NO. 019-0005
- SLOPE WALL DETAILS FOR STRUCTURE NO. 019-0006

HIGHWAY STANDARDS

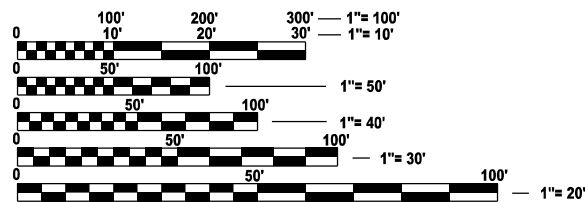
- 000001-08 STANDARD SYMBOLS, ABBREVIATIONS AND PATTERNS
- 001006 DECIMAL OF AN INCH AND OF A FOOT
- 701001-02 OFF-ROAD OPERATIONS 2L, 2W, MORE THAN 15' AWAY
- 701006-05 OFF-ROAD OPERATIONS 2L, 2W, 15' TO 24" FROM PAVEMENT EDGE
- 701201-05 LANE CLOSURE, 2L, 2W, DAY ONLY, FOR SPEEDS ≥ 45 MPH
- 701301-04 LANE CLOSURE, 2L, 2W, SHORT TIME OPERATIONS
- 701901-09 TRAFFIC CONTROL DEVICES

**PROPOSED
HIGHWAY PLANS**
F.A.P. ROUTE 324 (IL ROUTE 23)
SECTION (26VBR-1)SCR
PARTIAL CONCRETE SLOPEWALL
REMOVAL AND REPLACEMENT
DEKALB COUNTY

C-93-086-24



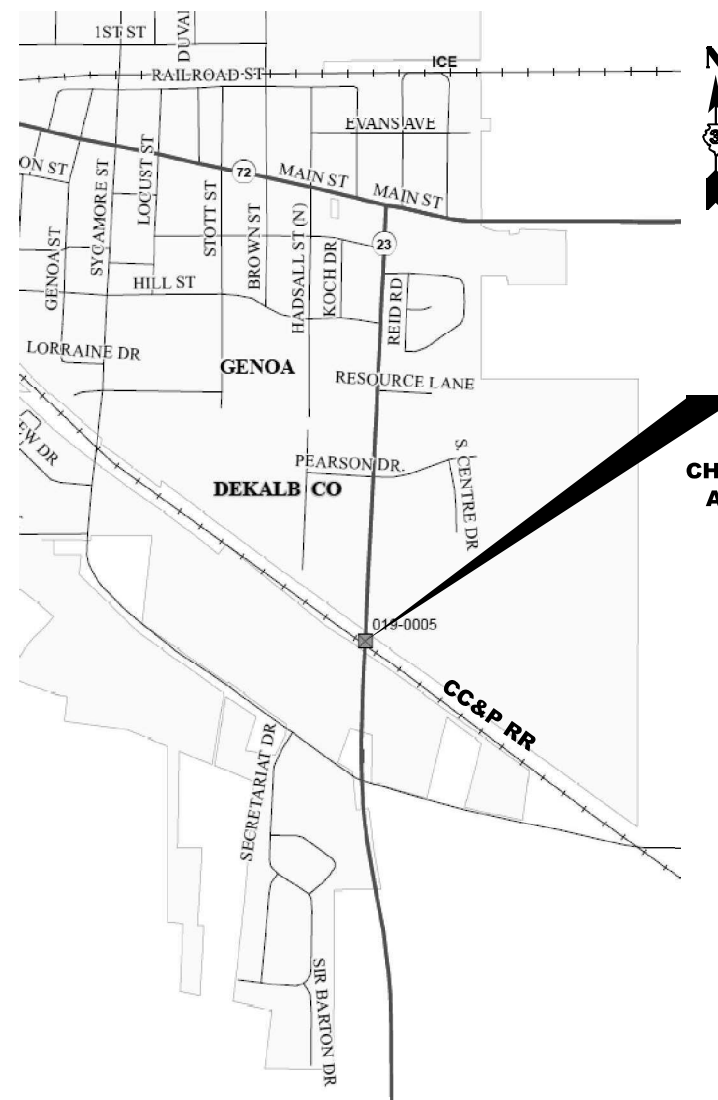
FUNCTIONAL CLASSIFICATION
URBAN - OTHER PRINCIPAL ARTERIAL
F.A.P. ROUTE 324 (IL ROUTE 23)
2021 ADT = 4750
P.V. 30.2 % S.U. 3.7 % M.U. 66.1 %



FULL SIZE PLANS HAVE BEEN PREPARED USING STANDARD ENGINEERING SCALES. REDUCED SIZED PLANS WILL NOT CONFORM TO STANDARD SCALES. IN MAKING MEASUREMENTS ON REDUCED PLANS, THE ABOVE SCALES MAY BE USED.

J.U.L.I.E.
JOINT UTILITY LOCATION INFORMATION FOR EXCAVATION
1-800-892-0123
OR 811

PROJECT ENGINEER: YOGESH PATEL P.E.
UNIT CHIEF: RON WOODSHANK
DISTRICT NO. 3 (815) 434-6131
CONTRACT NO. 66P35



PROJECT LOCATION
STRUCTURE NO. 019-0005
CARRYING IL ROUTE 23 OVER THE
CHICAGO, CENTRAL & PACIFIC RAILROAD
APPROXIMATELY 0.7 MILES SOUTH OF
IL ROUTE 72 IN GENOA

POINT LOCATION

STATE OF ILLINOIS
DEPARTMENT OF TRANSPORTATION
SUBMITTED August 21, 2024
Trisha Thompson REGIONAL ENGINEER
October 4, 2024
Scott A. Elk ENGINEER OF DESIGN AND ENVIRONMENT
October 4, 2024
James J. Gu DIRECTOR OF HIGHWAYS PROJECT IMPLEMENTATION

**PRINTED BY THE AUTHORITY
OF THE STATE OF ILLINOIS**

GENERAL NOTES

LAYOUT OF THE SLOPE PROTECTION SYSTEM MAY BE VARIED TO SUIT GROUND CONDITIONS IN THE FIELD AS DIRECTED BY THE ENGINEER.

ALL EXCAVATED MATERIAL, WHICH INCLUDES DIGGING OR GRADING OF ANY SOIL OR FILL MATERIAL, WITH THE EXCEPTION OF AGGREGATE FILLS, MUST BE INCORPORATED WITHIN THE IDOT RIGHT OF WAY.

COMMITMENTS

NONE

**STATE OF ILLINOIS
DEPARTMENT OF TRANSPORTATION
DISTRICT THREE
AS BUILT INFORMATION**

SUPERVISING CONSTRUCTION FIELD ENGINEER

RESIDENT ENGINEER / TECHNICIAN

**START & END DATES
OF CONSTRUCTION:**

INSPECTORS:

MODEL: Default
FILE NAME: c:\pwwork\woodshank\10275459\66P35.dgn

USER NAME = ronald.woodshank	DESIGNED - RW	REVISED -
	DRAWN - RW	REVISED -
	CHECKED - YP	REVISED -
PLOT DATE = 7/10/2024	DATE - 5/7/2024	REVISED -

**STATE OF ILLINOIS
DEPARTMENT OF TRANSPORTATION**

GENERAL NOTES

SCALE: SHEET 1 OF 1 SHEETS STA. TO STA.

F.A.P. RTE.	SECTION	COUNTY	TOTAL SHEETS	SHEET NO.
324	(26VBR-1)SCR	DEKALB	6	2
CONTRACT NO. 66P35				
ILLINOIS FED. AID PROJECT				

CODE NO.	ITEM	UNIT	TOTAL QUANTITY	CONSTRUCTION CODE
				CONTRACT MAINTENANCE
				100%
				BRIDGE
				0048
				S.N. 019-0005
42000060	WELDED WIRE REINFORCEMENT	SQ YD	138	138
44213204	TIE BARS 3/4"	EACH	42	42
50104650	SLOPE WALL REMOVAL	SQ YD	69	69
50300300	PROTECTIVE COAT	SQ YD	138	138
51100100	SLOPE WALL 4 INCH	SQ YD	138	138
54002020	EXPANSION BOLTS 3/4 INCH	EACH	42	42
59300100	CONTROLLED LOW-STRENGTH MATERIAL	CU YD	20	20
67100100	MOBILIZATION	L SUM	1	1
70100450	TRAFFIC CONTROL AND PROTECTION, STANDARD 701201	L SUM	1	1
X3580302	PREPARATION OF BASE (SPECIAL)	SQ YD	138	138
Z0048665	RAILROAD PROTECTIVE LIABILITY INSURANCE	L SUM	1	1

MODEL: Default
 FILE NAME: c:\pwworking\woodshank\10275459\66P35.dgn

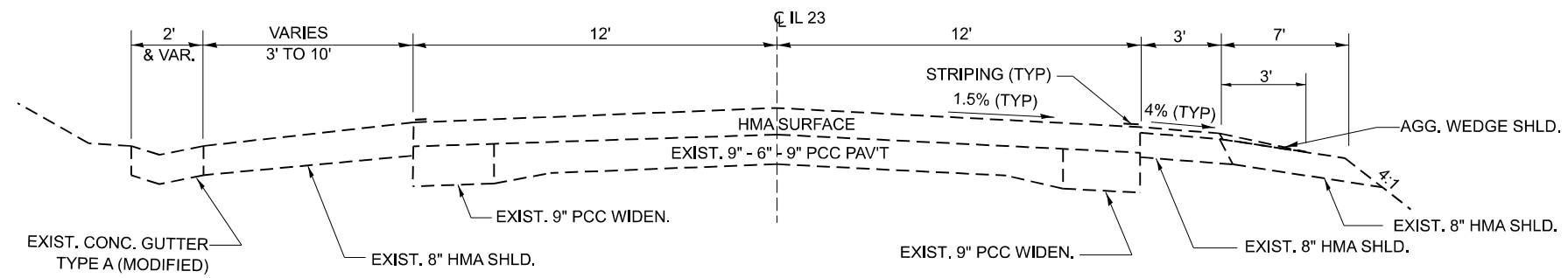
USER NAME = ronald.woodshank	DESIGNED - RW	REVISED -
	DRAWN - RW	REVISED -
	CHECKED - YP	REVISED -
PLOT DATE = 7/10/2024	DATE - 5/7/2024	REVISED -

**STATE OF ILLINOIS
DEPARTMENT OF TRANSPORTATION**

SUMMARY OF QUANTITIES

SCALE: SHEET 1 OF 1 SHEETS STA. TO STA.

F.A.P. RTE.	SECTION	COUNTY	TOTAL SHEETS	SHEET NO.
324	(26VBR-1)SCR	DEKALB	6	3
			CONTRACT NO. 66P35	
		ILLINOIS	FED. AID PROJECT	



TYPICAL SECTION

IL ROUTE 23
STA. 105+00 TO STA. 323+39.15
STATION EQUATION - STA. 323+39.15 BK = STA. 0+00 AH
STA. 0+00 TO STA. 11+36
STRUCTURE NO. 019-0005 STA. 11+36 TO STA. 13+55
STA. 13+55 TO STA. 39+00

MODEL: Default
 FILE NAME: c:\pwworking\woodshank\110725\66P35.dgn

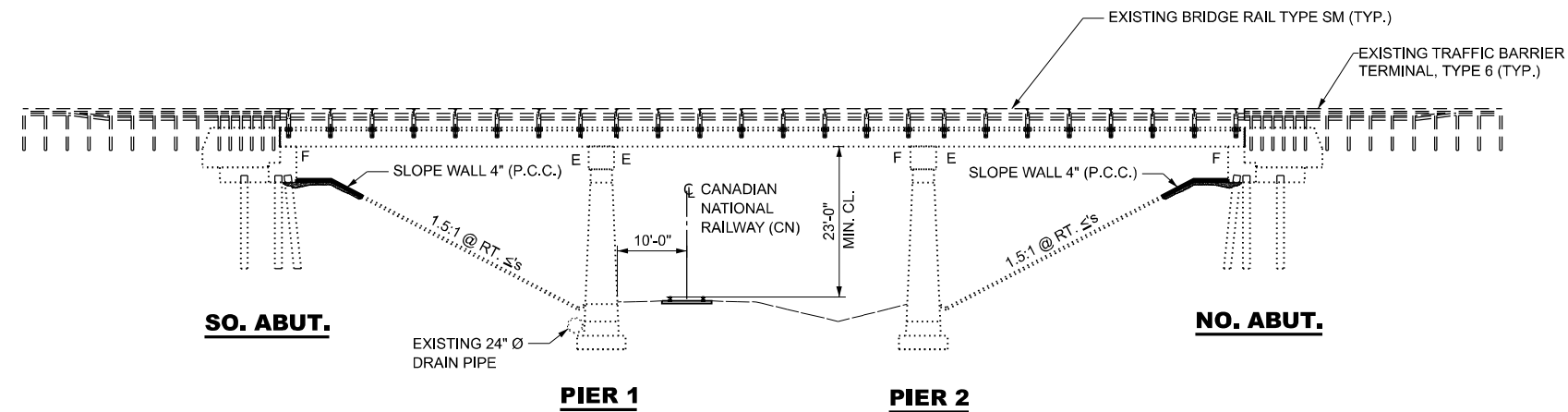
USER NAME = ronald.woodshank	DESIGNED - RW	REVISED -
	DRAWN - RW	REVISED -
	CHECKED - YP	REVISED -
PLOT DATE = 7/10/2024	DATE - 5/7/2024	REVISED -

STATE OF ILLINOIS
DEPARTMENT OF TRANSPORTATION

TYPICAL SECTION

SCALE: SHEET 1 OF 1 SHEETS STA. TO STA.

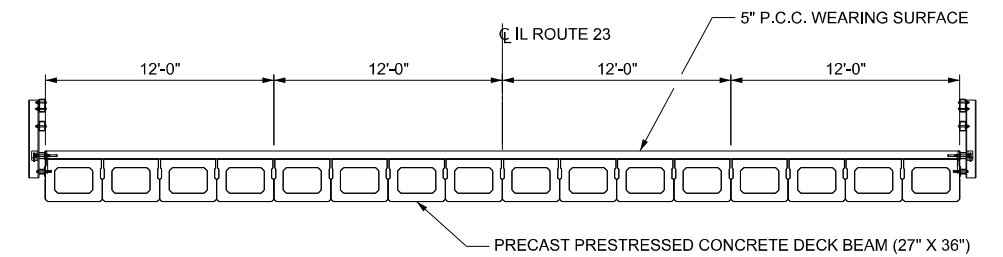
F.A.P. RTE.	SECTION	COUNTY	TOTAL SHEETS	SHEET NO.
324	(26VBR-1)SCR	DEKALB	6	4
CONTRACT NO. 66P35				
ILLINOIS FED. AID PROJECT				



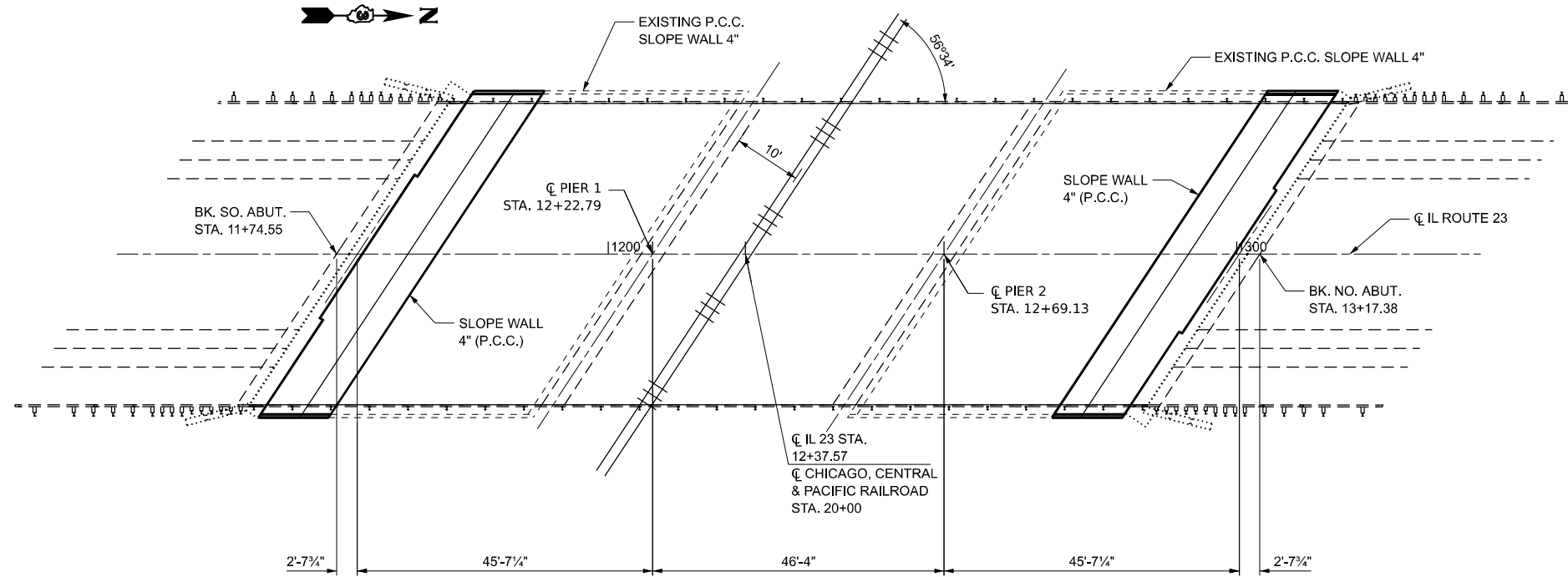
ELEVATION

DESCRIPTION OF WORK

1. REMOVE BROKEN CONCRETE, HOT-MIX ASPHALT, STONE, DEBRIS AND FORIGN MATERIALS FROM
 - a. UNDER SUBSTRUCTURE ELEMENTS (ABUTMENT).
 - b. SLOPE WALL BERM
 - c. UNDER CONCRETE SLOPE WALL.
2. GRADE AND COMPACT EXISTING SUBGRADE WHEREVER NECESSARY.
3. FILL VOID(S) UNDER SUBSTRUCTURE ELEMENTS AND SLOPE WALL WITH CONTROLLED LOW-STRENGTH MATERIAL (CLSM).
4. CONSTRUCT P.C.C. CONCRETE SLOPE WALL AND BERM.



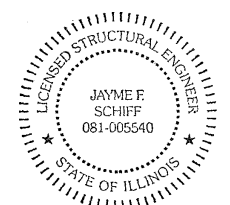
CROSS SECTION



**PLAN
STRUCTURE NO. 019-0005**

TOTAL BILL OF MATERIAL

ITEM	UNIT	TOTAL
SLOPE WALL REMOVAL	SQ YD	69
WELDED WIRE REINFORCEMENT	SQ YD	138
PREPARATION OF BASE	SQ YD	138
CONTROLLED LOW - STRENGTH MATERIAL	CU YD	20
SLOPE WALL 4 INCH	SQ YD	138
EXPANSION BOLTS 3/4 INCH X 12 INCH	EACH	42
TIE BARS 3/4"	EACH	42
PROTECTIVE COATING	SQ YD	138



EXPIRES 11-30-2024

Jayme F. Schiff

MODEL: Default
FILE NAME: c:\pwworking\woodshank\102754519\66P35.dgn

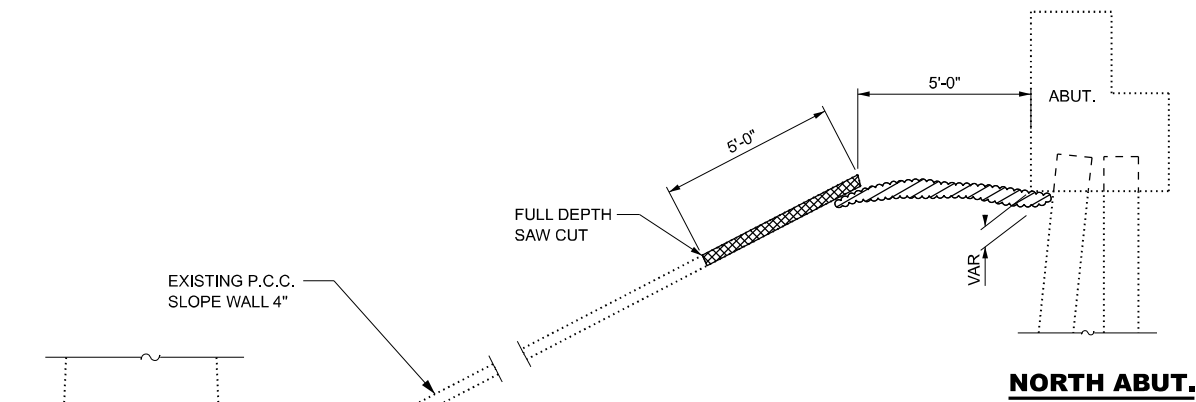
USER NAME = ronald.woodshank	DESIGNED - RW	REVISED -
	DRAWN - RW	REVISED -
	CHECKED - YP	REVISED -
PLOT DATE = 7/10/2024	DATE - 5/7/2024	REVISED -

**STATE OF ILLINOIS
DEPARTMENT OF TRANSPORTATION**

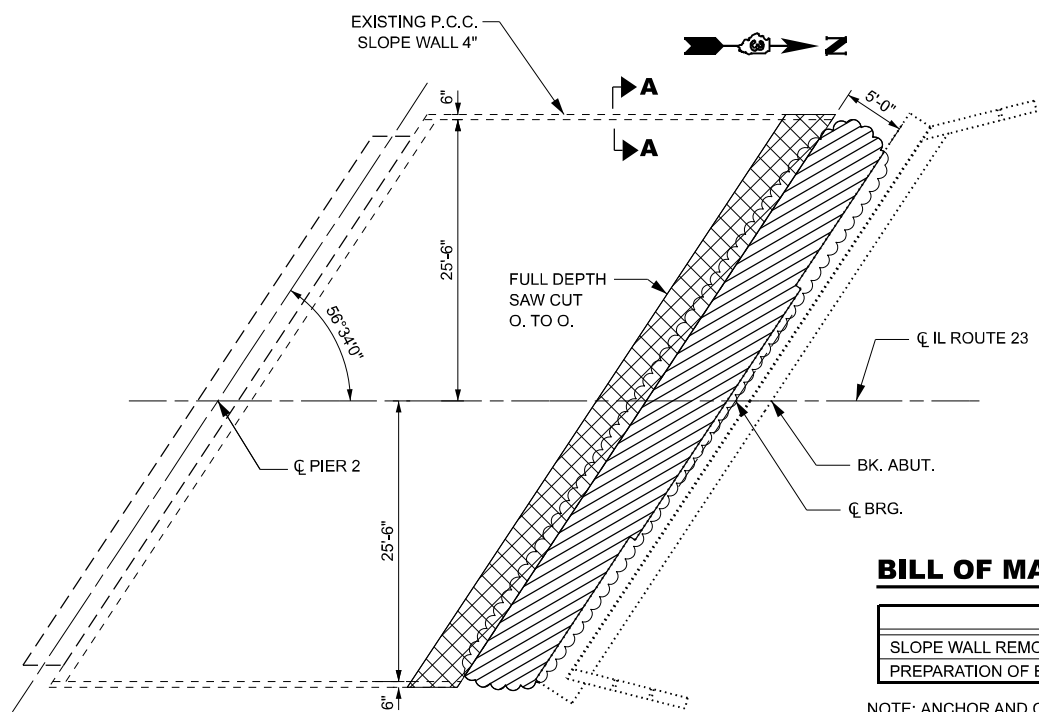
**GENERAL PLAN AND ELEVATION
FOR STRUCTURE NO. 019-0005**

SCALE: SHEET 1 OF 1 SHEETS STA. TO STA.

F.A.P. RTE. 324	SECTION (26VBR-1)SCR	COUNTY DEKALB	TOTAL SHEETS 6	SHEET NO. 5
			CONTRACT NO. 66P35	
		ILLINOIS FED. AID PROJECT		



SECTION A-A (TYP)



PLAN - NORTH ABUTMENT FOR STRUCTURE NO. 019-0005

NORTH ABUTMENT / PIER 2 SHOWN, SOUTH ABUTMENT / PIER 1 SIMILAR

BILL OF MATERIAL-SOUTH ABUTMENT

ITEM	UNIT	TOTAL
SLOPE WALL REMOVAL	SQ YD	34.5
PREPARATION OF BASE	SQ YD	69

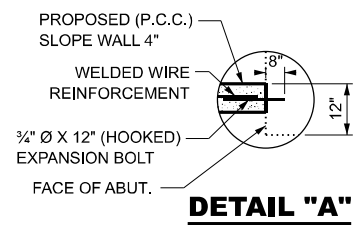
NOTE: ANCHOR AND CUTOFF WALLS WILL NOT BE MEASURED FOR PAYMENT

BILL OF MATERIAL-NORTH ABUTMENT

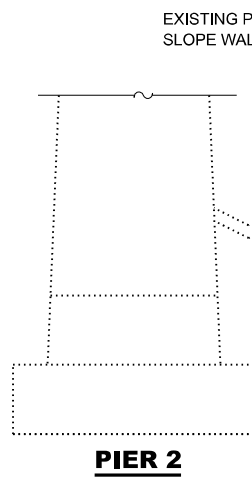
ITEM	UNIT	TOTAL
SLOPE WALL REMOVAL	SQ YD	34.5
PREPARATION OF BASE	SQ YD	69

NOTE: ANCHOR AND CUTOFF WALLS WILL NOT BE MEASURED FOR PAYMENT

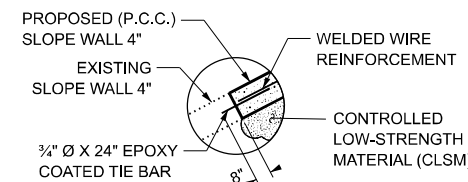
EXISTING DETAILS



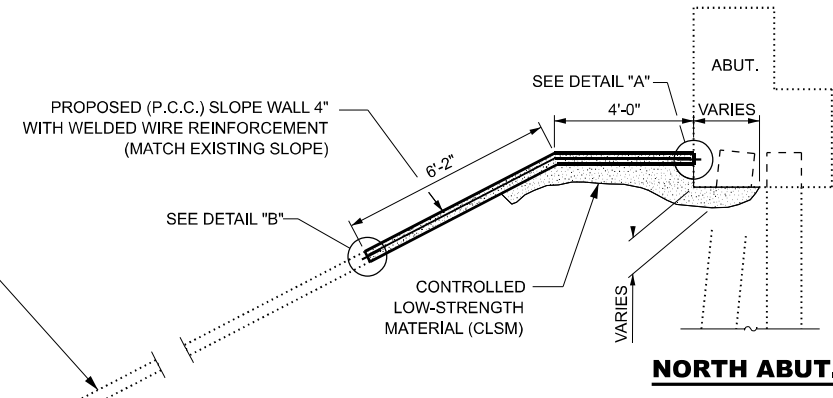
DETAIL "A"



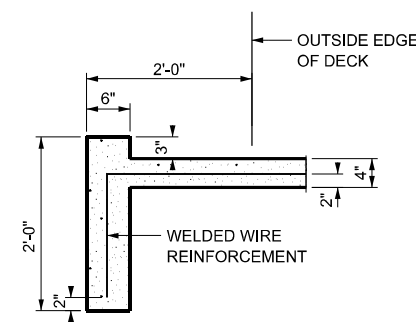
PIER 2



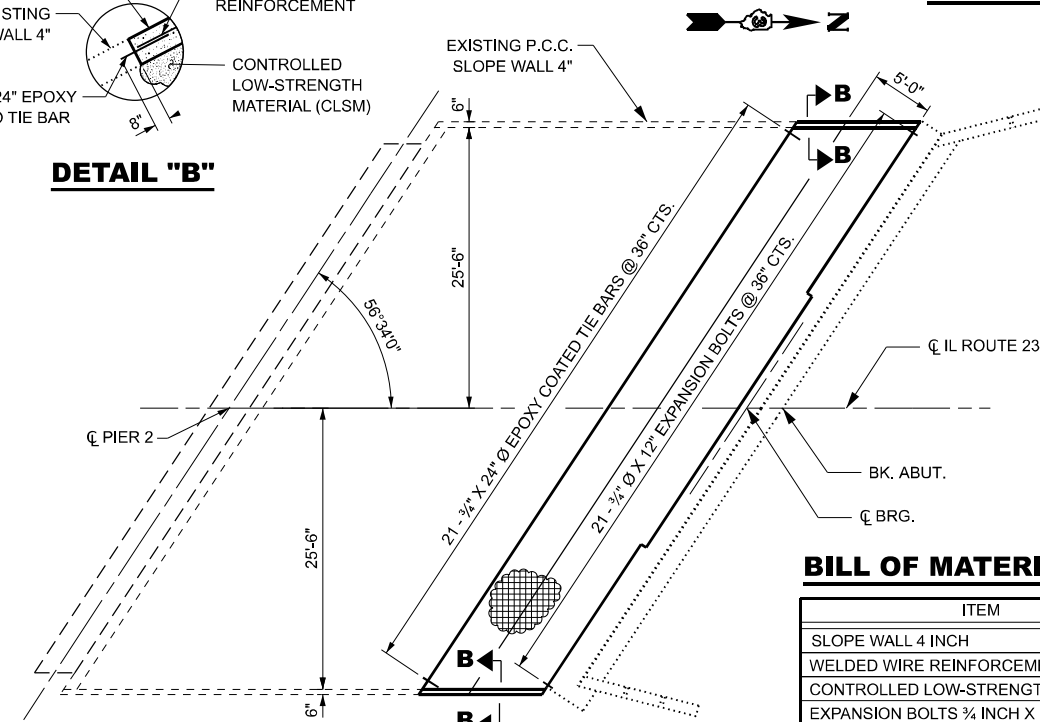
DETAIL "B"



NORTH ABUT.



SECTION B-B



PLAN - NORTH ABUTMENT FOR STRUCTURE NO. 019-0005

NORTH ABUTMENT / PIER 2 SHOWN, SOUTH ABUTMENT / PIER 1 SIMILAR

BILL OF MATERIAL-SOUTH ABUTMENT

ITEM	UNIT	TOTAL
SLOPE WALL 4 INCH	SQ YD	69
WELDED WIRE REINFORCEMENT	SQ YD	69
CONTROLLED LOW-STRENGTH MATERIAL	CU YD	10
EXPANSION BOLTS 3/4 INCH X 12 INCH	EACH	21
TIE BARS 3/4"	EACH	21
PROTECTIVE COAT	SQ YD	69

BILL OF MATERIAL-NORTH ABUTMENT

ITEM	UNIT	TOTAL
SLOPE WALL 4 INCH	SQ YD	69
WELDED WIRE REINFORCEMENT	SQ YD	69
CONTROLLED LOW-STRENGTH MATERIAL	CU YD	10
EXPANSION BOLTS 3/4 INCH X 12 INCH	EACH	21
TIE BARS 3/4"	EACH	21
PROTECTIVE COAT	SQ YD	69

PROPOSED DETAILS

MODEL: Default
FILE NAME: c:\pwworking\woodshank\019005\019005.dgn

USER NAME = ronald.woodshank	DESIGNED - RW	REVISED -
	DRAWN - RW	REVISED -
	CHECKED - YP	REVISED -
PLOT DATE = 7/10/2024	DATE - 5/7/2024	REVISED -

STATE OF ILLINOIS
DEPARTMENT OF TRANSPORTATION

SLOPE WALL DETAILS
FOR STRUCTURE NO. 019-0005

SCALE: SHEET 1 OF 1 SHEETS STA. TO STA.

F.A.P. RTE. 324	SECTION (28VBR-1)SCR	COUNTY DEKALB	TOTAL SHEETS 6	SHEET NO. 6
CONTRACT NO. 66P35				
ILLINOIS FED. AID PROJECT				