

STATE OF ILLINOIS
DEPARTMENT OF TRANSPORTATION

F.A.I. RTE.	SECTION	COUNTY	TOTAL SHEETS	SHEET NO.
55	D6 PATCHING 2025-2	LOGAN	6	1
		ILLINOIS	CONTRACT NO. 72516	

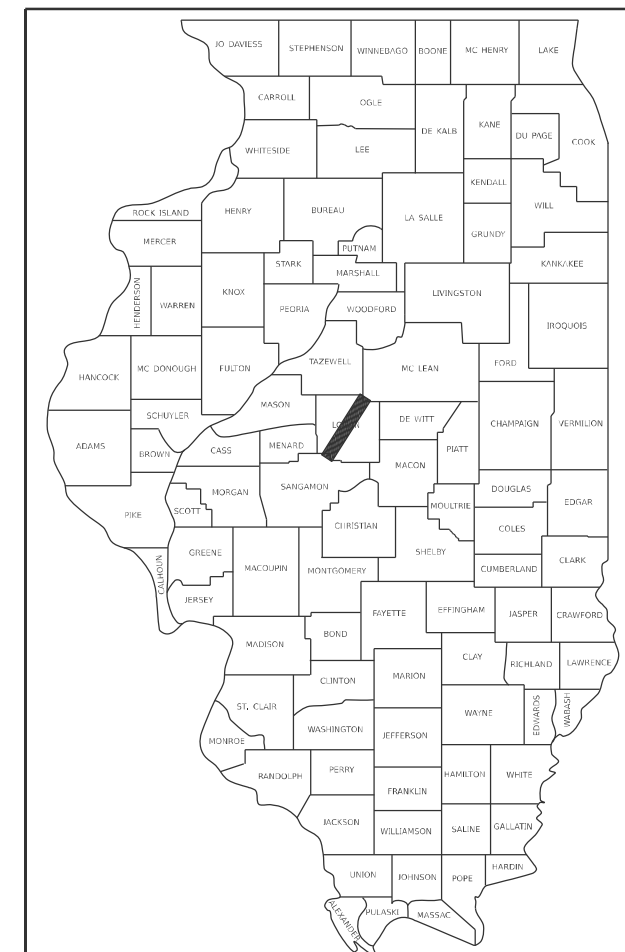
FOR INDEX OF SHEETS, SEE SHEET NO.

PROPOSED HIGHWAY PLANS

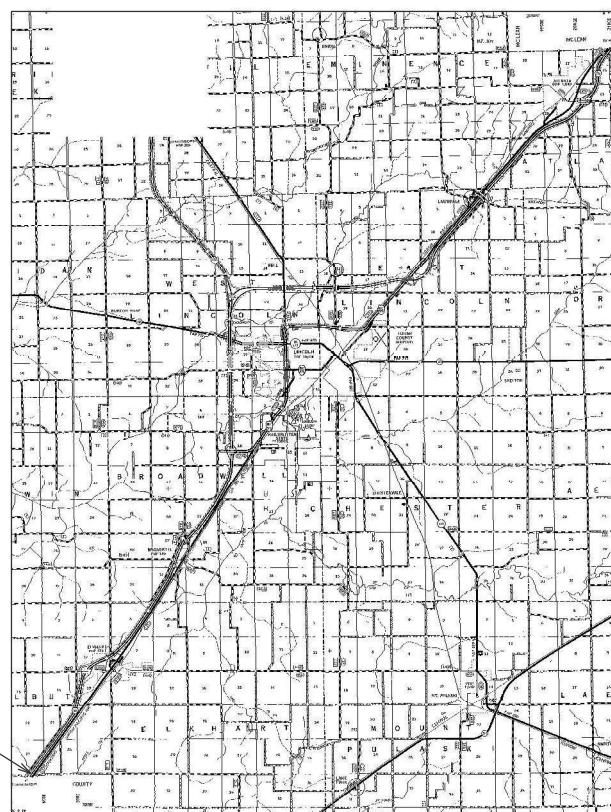
FAI 55 (I-55)
SECTION D6 PATCHING 2025-2
CLASS A AND C PATCHES

LOGAN COUNTY
C-96-088-24

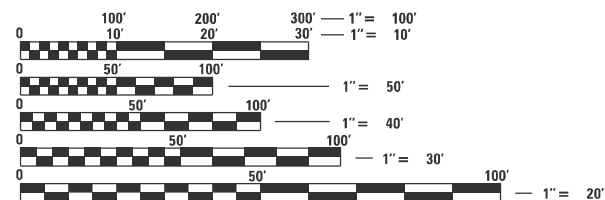
D-96-066-24



LOCATION OF SECTION INDICATED THIS: - [shaded bar] -



ADT = 18,500 (2023)
SU = 450 (2023)
MU = 4,700 (2023)



FULL SIZE PLANS HAVE BEEN PREPARED USING STANDARD ENGINEERING SCALES, REDUCED SIZED PLANS WILL NOT CONFORM TO STANDARD SCALES. IN MAKING MEASUREMENTS ON REDUCED PLANS, THE ABOVE SCALES MAY BE USED.

J.U.L.I.E.
JOINT UTILITY LOCATION INFORMATION FOR EXCAVATORS
1-800-892-0123
OR 811

PROJECT ENGINEER: MIKE HAMBY (217)524-7765
PROJECT MANAGER: TIM SHARP (217)524-9160

GROSS LENGTH = 161,040.00 FT. = 30.500 MILE
NET LENGTH = 161,040.00 FT. = 30.500 MILE

CONTRACT NO. 72516

STATE OF ILLINOIS
DEPARTMENT OF TRANSPORTATION

SUBMITTED August 20, 2024

John P. Meyer
REGIONAL ENGINEER

October 4, 2024
Scott A. Etkin
ENGINEER OF DESIGN AND ENVIRONMENT

October 4, 2024
James J. Gorman
DIRECTOR OF HIGHWAYS PROJECT IMPLEMENTATION

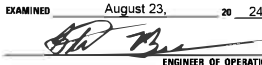
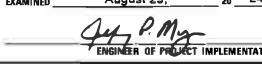

PRINTED BY THE AUTHORITY
OF THE STATE OF ILLINOIS

INDEX

SHEET NO.	DESCRIPTION
1.	COVER SHEET
2.	INDEX, STANDARDS, SIGNATURES
3.	SUMMARY OF QUANTITIES
4.	SCHEDULES
5.	LOCATION MAP
6.	TYPICAL SECTIONS

STANDARDS

STANDARD NO.	DESCRIPTION
000001-08	STANDARD SYMBOLS, ABBREVIATIONS AND PATTERNS
001006	DECIMAL OF AN INCH AND OF A FOOT
420001-10	PAVEMENT JOINTS
442001-04	CLASS A PATCHES
442201-03	CLASS C AND D PATCHES
701101-05	OFF-RD OPERATIONS, MULTILINE, 15' TO 24" FROM EDGE OF PAVEMENT
701106-02	OFF-RD OPERATIONS, MULTILINE, MORE THAN 15' AWAY
701400-12	APPROACH TO LANE CLOSURE, FREEWAY/EXPRESSWAY
701401-13	LANE CLOSURE, FREEWAY/EXPRESSWAY
701411-09	LANE CLOSURE, MULTILANE AT ENTRANCE OF EXIT RAMP FOR SPEEDS >45
701446-11	MPH TWO LANE CLOSURE, FREEWAY/EXPRESSWAY
701901-09	TRAFFIC CONTROL DEVICES

STATE OF ILLINOIS DEPARTMENT OF TRANSPORTATION DIVISION OF HIGHWAYS DISTRICT 6	
EXAMINED	August 23, 2024
 ENGINEER OF OPERATIONS	
EXAMINED	August 23, 2024
 ENGINEER OF PROJECT IMPLEMENTATION	
EXAMINED	August 23, 2024
 ENGINEER OF PROGRAM DEVELOPMENT	

REV - MS

FILE NAME =	USER NAME = Timothy.Sharp	DESIGNED - DMS	REVISED -	STATE OF ILLINOIS DEPARTMENT OF TRANSPORTATION	INDEX, STANDARDS, SIGNATURES	F.A.I. RTE.	SECTION	COUNTY	TOTAL SHEETS	SHEET NO.	
px://idot-pw.bentley.com/PWIDOT/Document/IDOT Offices/District 6/ORD Projects/D672516/CRAN/CRAN/CAO/sher/2516-sht-2-signature-revised.dgn	PLOT SCALE = #SCALE#	CHECKED -	REVISED -			55	D6 PATCHING 2025-2	LOGAN	6	2	
Default	PLOT DATE = 8/20/2024	DATE - 5-13-2013	REVISED -			SCALE: SHEET OF SHEETS STA. TO STA.		CONTRACT NO. 72516			
						ILLINOIS FED. AID PROJECT					

0-02179-6024
 100% STATE
 LOGAN
 ROADWAY
 0006
 RURAL

CODE NO.	ITEM	UNIT	TOTAL QUANTITY	
44200610	CLASS A PATCHES, TYPE II, 13 INCH	SQ YD	45	45
44200614	CLASS A PATCHES, TYPE IV, 13 INCH	SQ YD	27	27
44213000	PATCHING REINFORCEMENT	SQ YD	72	72
44213200	SAW CUTS	FOOT	428	428
44213204	TIE BARS 3/4"	EACH	38	38
67100100	MOBILIZATION	L SUM	1	1
70100420	TRAFFIC CONTROL AND PROTECTION, STANDARD 701411	EACH	7	7
70100800	TRAFFIC OCONTROL AND PROTECTION, STANDARD 701401	L SUM	1	1
70100815	TRAFFIC OCONTROL AND PROTECTION, STANDARD 701446	L SUM	1	1
70107025	CHANGEABLE MESSAGE SIGN	CAL DAY	60	60
70200100	NIGHTTIME WORK ZONE LIGHTING	L SUM	1	1
X4421389	CLASS C PATCHES, TYPE II, 13 INCH (SPECIAL)	SQ YD	613	613
X4421394	CLASS C PATCHES, TYPE III, 13 INCH (SPECIAL)	SQ YD	119	119
X4421396	CLASS C PATCHES, TYPE IV, 13 INCH (SPECIAL)	SQ YD	113	113

MODEL: Default
 FILE NAME: p:\illicit-raw-beadley.com\P\INDOT\Documents\DOT_0_csr\District_6\ORRD_projects\0672516\CADD\DATA\CAD\Sheets\72516-sht3-SQ.dgn

USER NAME = Timothy,Sharp	DESIGNED -	REVISED -
PLOT SCALE = \$SCALE\$	DRAWN -	REVISED -
PLOT DATE = 8/20/2024	CHECKED -	REVISED -
	DATE -	REVISED -

**STATE OF ILLINOIS
 DEPARTMENT OF TRANSPORTATION**

SUMMARY OF QUANTITIES

SCALE: SHEET OF SHEETS STA. TO STA.

F.A.I. RTE.	SECTION	COUNTY	TOTAL SHEETS	SHEET NO.
55	D6 PATCHING 2025-2	LOGAN	6	3
			CONTRACT NO. 72516	
			ILLINOIS FED. AID PROJECT	

MILE MARKER	LANE	LENGTH (FT)	WIDTH (FT)	AREA (S.Y.)	CLASS A, 13 INCH		CLASS C, 13 INCH (SPECIAL)			SAW CUTS (FT)	TIE BARS 3/4" (EA.)	PAVEMENT REINF. (S.Y.)
					TY II (S.Y.)	TY IV (S.Y.)	TY II (S.Y.)	TY III (S.Y.)	TY IV (S.Y.)			
I-55 NORTHBOUND - LOGAN COUNTY												
111.1	LOGAN - SANGAMON COUNTY LINE											
114.6	EXIT 115 (ELKHART) - SN 054-0038											
119.5	EXIT 119 (BROADWELL) - SN 054-0039											
120.2	CROSS OVER											
121.8	CROSS OVER											
121.9	DL	8	6	5.3	5.3	--	--	--	--	40.0	--	5.3
121.9	ML	8	6	5.3	5.3	--	--	--	--	40.0	--	5.3
121.9	DL	8	6	5.3	5.3	--	--	--	--	40.0	--	5.3
122.1	DL	8	6	5.3	5.3	--	--	--	--	40.0	--	5.3
122.2	DL	8	6	5.3	5.3	--	--	--	--	40.0	--	5.3
122.4	DL	8	6	5.3	5.3	--	--	--	--	40.0	--	5.3
122.6	EXIT 123 (BUS LOOP 55) - SN 054-0040											
123.4	CROSS OVER											
123.7	STRUCTURE 054-0042											
124.2	STRUCTURE 054-0043											
124.9	DL	8	6	5.3	5.3	--	--	--	--	40.0	--	5.3
124.9	COUNTY HIGHWAY 13 OVERHEAD - SN 054-0045											
124.9	ML	20	12	26.7	--	26.7	--	--	--	88.0	12.0	26.7
125.3	CROSS OVER											
125.9	EXIT 126 (IL 10) - SN 054-0047											
126.3	STRUCTURE 054-0049											
126.5	DL	10	12	13.3	--	--	13.3	--	--	--	--	--
126.7	DL	10	12	13.3	--	--	13.3	--	--	--	--	--
126.8	EXIT 127 (I-155) (LEFT)											
127.3	DL	10	12	13.3	--	--	13.3	--	--	--	--	--
128.2	CROSS OVER											
128.6	OLD 121 OVERHEAD - SN 054-0052											
129.0	STRUCTURE 054-0053											
129.5	STRUCTURE 054-0055											
129.8	STRUCTURE 054-0057											
130.0	PL	30	12	40.0	--	--	--	40.0	--	--	9.0	--
130.1	NICKOLSON ROAD OVERHEAD STRUCTURE 054-0059											
130.1	PL	25	12	33.3	--	--	--	33.3	--	--	8.0	--
130.2	DL	10	12	13.3	--	--	13.3	--	--	--	--	--
130.6	CROSS OVER											
130.8	DL	10	12	13.3	--	--	13.3	--	--	--	--	--
131.1	DL	10	12	13.3	--	--	13.3	--	--	--	--	--
131.6	CROSS OVER											
132.2	EXIT 133 (BUS 55 LINCOLN/LAWNDALE) - SN 054-0061											
132.4	DL	10	12	13.3	--	--	13.3	--	--	--	--	--
133.1	DL	10	12	13.3	--	--	13.3	--	--	--	--	--
133.1	DL	10	12	13.3	--	--	13.3	--	--	--	--	--
133.4	CROSS OVER											
135.1	CROSS OVER											
135.6	LAWNDALE OVERHEAD - SN 054-0062											
135.7	STRUCTURE 054-0063											
135.9	DL	10	12	13.3	--	--	13.3	--	--	--	--	--
135.9	DL	10	12	13.3	--	--	13.3	--	--	--	--	--
136.1	DL	10	12	13.3	--	--	13.3	--	--	--	--	--
136.8	PL	10	12	13.3	--	--	13.3	--	--	--	--	--
138.2	DL	10	12	13.3	--	--	13.3	--	--	--	--	--
138.6	CROSS OVER											
139.0	STRUCTURE 054-0063											
139.8	DL	10	12	13.3	--	--	13.3	--	--	--	--	--
139.9	ATLANTA OVERHEAD - SN 054-0069											
141.6	LOGAN/MCLEAN COUNTY LINE											

MILE MARKER	LANE	LENGTH (FT)	WIDTH (FT)	AREA (S.Y.)	CLASS A, 13 INCH		CLASS C, 13 INCH (SPECIAL)			SAW CUTS (FT)	TIE BARS 3/4" (EA.)	PAVEMENT REINF. (S.Y.)
					TY II (S.Y.)	TY IV (S.Y.)	TY II (S.Y.)	TY III (S.Y.)	TY IV (S.Y.)			
I-55 SOUTHBOUND -- LOGAN COUNTY												
141.6	LOGAN/MCLEAN COUNTY LINE											
140.2	PL	10	12	13.3	--	--	13.3	--	--	--	--	--
139.9	EXIT 140 - ATLANTA											
139.2	STRUCTURE 054-0066 - RACE ST											
138.7	CROSS OVER											
137.9	DL	10	12	13.3	--	--	13.3	--	--	--	--	--
137.8	DL	10	12	13.3	--	--	13.3	--	--	--	--	--
137.7	DL	10	12	13.3	--	--	13.3	--	--	--	--	--
137.6	DL	12	12	16.0	--	--	--	16.0	--	--	--	--
137.5	DL	15	12	20.0	--	--	--	20.0	--	--	--	--
137.4	DL	12	12	16.0	--	--	--	16.0	--	--	--	--
137.4	DL	10	12	13.3	--	--	13.3	--	--	--	--	--
137.4	DL	12	12	16.0	--	--	--	16.0	--	--	--	--
137.3	DL	12	12	16.0	--	--	--	16.0	--	--	--	--
137.2	DL	12	12	16.0	--	--	--	16.0	--	--	--	--
137.2	DL	14	12	18.7	--	--	--	18.7	--	--	--	--
137.2	DL	10	12	13.3	--	--	13.3	--	--	--	--	--
136.9	DL	10	12	13.3	--	--	13.3	--	--	--	--	--
136.9	DL	10	12	13.3	--	--	13.3	--	--	--	--	--
136.6	DL	10	12	13.3	--	--	13.3	--	--	--	--	--
136.5	DL	10	12	13.3	--	--	13.3	--	--	--	--	--
136.1	DL	10	12	13.3	--	--	13.3	--	--	--	--	--
136.1	DL	10	12	13.3	--	--	13.3	--	--	--	--	--
136.0	DL	10	12	13.3	--	--	13.3	--	--	--	--	--
136.0	DL	10	12	13.3	--	--	13.3	--	--	--	--	--
135.9	DL	10	12	13.3	--	--	13.3	--	--	--	--	--
135.8	STRUCTURE 054-0064											
135.7	OVERHEAD STRUCTURE - LAWNDALE - SN 054-0062											
135.4	DL	10	12	13.3	--	--	13.3	--	--	--	--	--
135.3	DL	10	12	13.3	--	--	13.3	--	--	--	--	--
135.2	DL	10	12	13.3	--	--	13.3	--	--	--	--	--
135.2	DL	10	12	13.3	--	--	13.3	--	--	--	--	--
135.2	CROSS OVER											
135.1	DL	10	12	13.3	--	--	13.3	--	--	--	--	--
135.1	DL	10	12	13.3	--	--	13.3	--	--	--	--	--
134.7	DL	10	12	13.3	--	--	13.3	--	--	--	--	--
134.6	DL	30	12	40.0	--	--	--	40.0	--	9.0	--	--
134.4	DL	10	12	13.3	--	--	13.3	--	--	--	--	--
134.3	DL	10	12	13.3	--	--	13.3	--	--	--	--	--
133.6	DL	10	12	13.3	--	--	13.3	--	--	--	--	--
133.4	CROSS OVER											
132.9	DL	10	12	13.3	--	--	13.3	--	--	--	--	--
132.9	DL	10	12	13.3	--	--	13.3	--	--	--	--	--
132.2	STRUCTURE 054-0060											
131.7	CROSS OVER											
131.6	DL	10	12	13.3	--	--	13.3	--	--	--	--	--
130.7	CROSS OVER											
130.2	STRUCTURE 054-0059											
129.9	DL	10	12	13.3	--	--	13.3	--	--	--	--	--
129.9	STRUCTURE 054-0058											
129.6	STRUCTURE 054-0056											
129.2	STRUCTURE 054-0054											
128.9	DL	10	12	13.3	--	--	13.3	--	--	--	--	--
128.8	DL	10	12	13.3	--	--	13.3	--	--	--	--	--
128.6	STRUCTURE 054-0052											
127.8	CROSS OVER											
127.8	I-155 EXIT RAMP											
127.2	STRUCTURE 054-0051 - I-155 SB TO I-55 NB											
126.6	ON RAMP FROM I-155											
126.6	BEGIN 3 LANES											
126.5	STRUCTURE 054-0047											
125.9	EXIT 126 (IL 10) - SN 054-0046											
125.5	CROSS OVER											
125.0	COUNTY HIGHWAY 13 OVERHEAD - SN 054-0045											
124.2	STRUCTURE 054-0044											
123.7	STRUCTURE 054-0041											
123.5	CROSS OVER											
122.6	EXIT 123 (BUS LOOP 55) - SN 054-0040											
121.8	CROSS OVER											
119.5	EXIT 119 (BROADWELL) - SN 054-0039											
118.8	CROSS OVER											
115.4	CROSS OVER											
114.6	EXIT 115 (ELKHART) - SN 054-0038											
113.6	CROSS OVER											
113.4	ML	6	12	8.0	8.0	--	--	--	--	60.0	--	8.0
112.4	CROSS OVER											
111.1	LOGAN - SANGAMON COUNTY LINE											
Patching Total:					45.3	26.7	613.3	118.7	113.3	428.0	38.0	72.0

MODEL: Default
 FILE NAME: \\fs1\dot\paw\ben\paw.com\PIV\DOT\Documents\DOT_0_csr\District_6\ORD Projects\06725\B\CAD\DATA\CAD\Sheets\725\6-24-24\Sheet\6.dgn

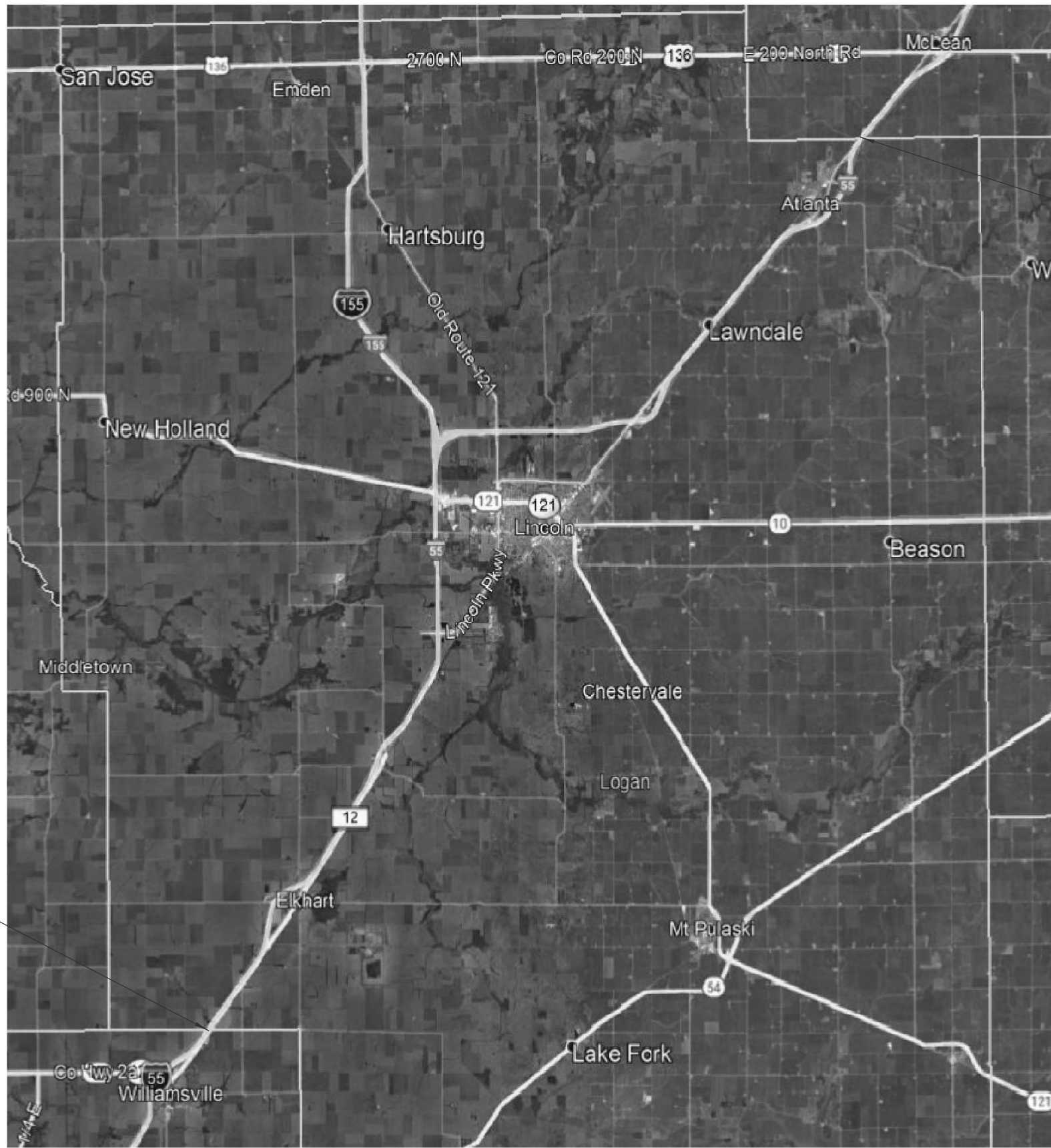
USER NAME = Timothy.Sharp	DESIGNED -	REVISED -
PLOT SCALE = \$SCALES	DRAWN -	REVISED -
PLOT DATE = 8/20/2024	CHECKED -	REVISED -
	DATE -	REVISED -

**STATE OF ILLINOIS
DEPARTMENT OF TRANSPORTATION**

SCHEDULES

SCALE: SHEET OF SHEETS STA. TO STA.

F.A.I. RTE.	SECTION	COUNTY	TOTAL SHEETS	SHEET NO.
55	D6 PATCHING 2025-2	LOGAN	6	4
CONTRACT NO. 72516				
ILLINOIS FED. AID PROJECT				



BEGIN PROJECT
SANGAMON/
LOGAN CO. LINE

END PROJECT
LOGAN/
MCLEAN CO. LINE

MODEL: Default
 FILE NAME: p:\ilicad\work\beadefy.com\PIV\DOT\Documents\DOT 0_ces\District 6\ORRD Projects\0672516\CAD\DATA\CAD\Sheets\72516-dt-5-location_map.dgn

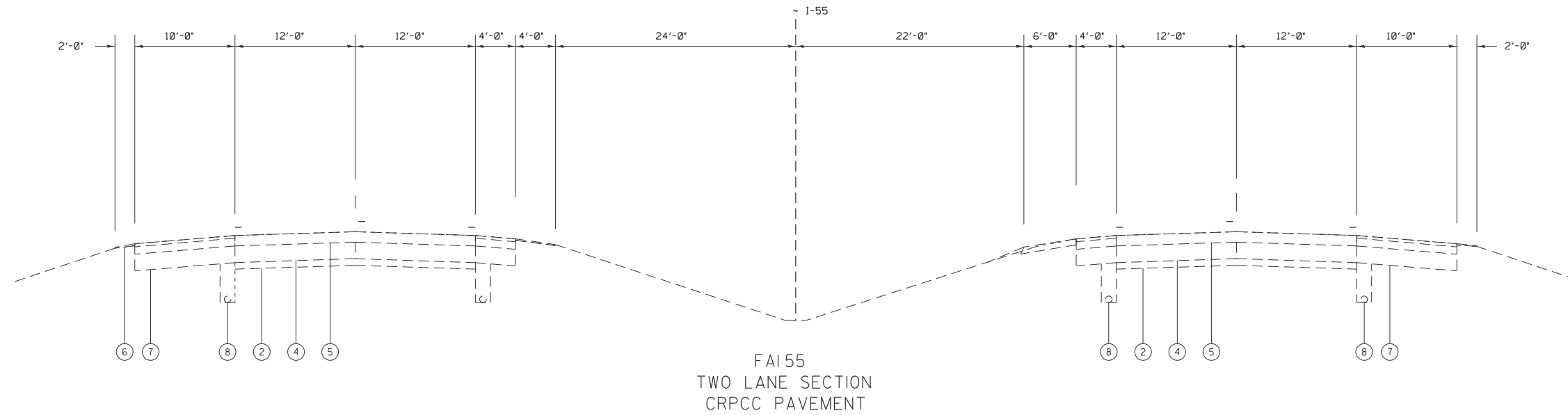
USER NAME = Timothy.Sharp	DESIGNED -	REVISED -
	DRAWN -	REVISED -
PLOT SCALE = \$SCALES	CHECKED -	REVISED -
PLOT DATE = 7/29/2024	DATE -	REVISED -

**STATE OF ILLINOIS
DEPARTMENT OF TRANSPORTATION**

LOCATION MAP

SCALE: SHEET OF SHEETS STA. TO STA.

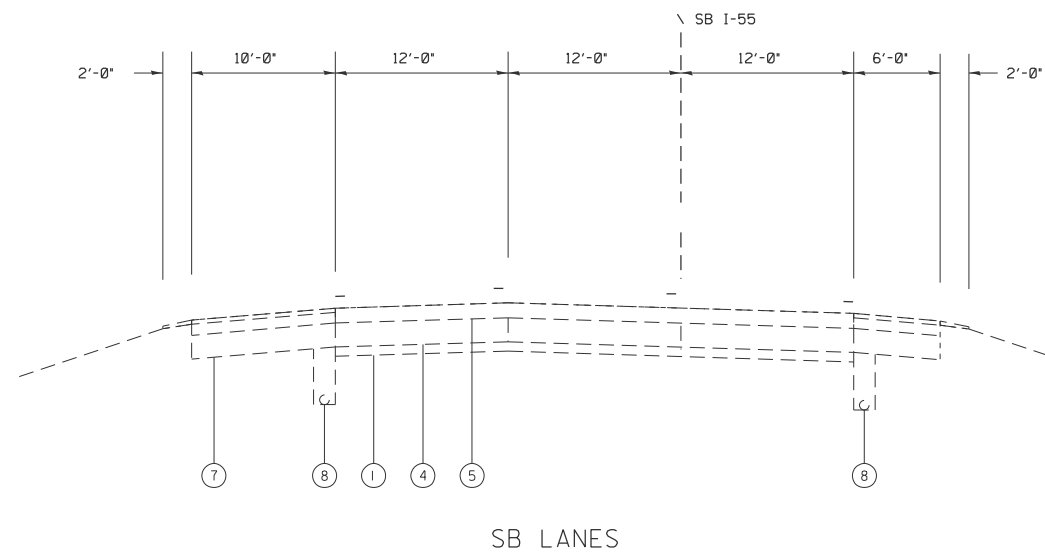
F.A.I. RTE.	SECTION	COUNTY	TOTAL SHEETS	SHEET NO.
55	D6 PATCHING 2025-2	LOGAN	6	5
CONTRACT NO. 72516				
ILLINOIS FED. AID PROJECT				



FAI 55
TWO LANE SECTION
CRPCC PAVEMENT

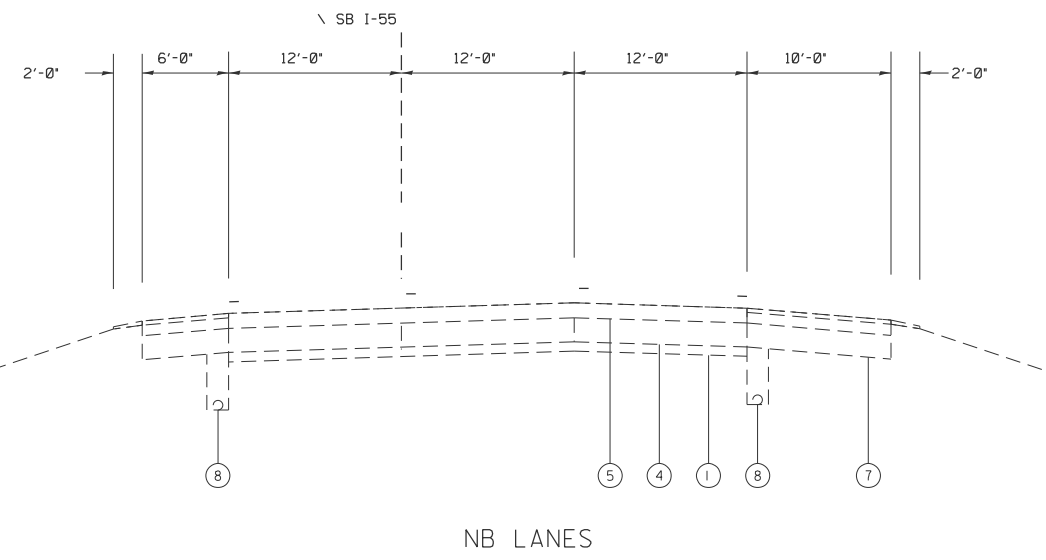
LEGEND

- ① EX STABILIZED SUB-BASE 4"
- ② EX AGGREGATE SUB-BASE 4"
- ③ EX PCC PAVEMENT 9"
- ④ EX CRPCC PAVEMENT
- ⑤ EX HOT -MIX ASPHALT SURFACE COURSE (VARIABLE THICKNESS)
- ⑥ EX AGGREGAE SHOULDERS
- ⑦ EX HOT-MIX ASPHALT SHOULDERS
- ⑧ EX PIPE UNDERDRAIN



SB LANES

FAI 55
THREE LANE SECTION
CRPCC PAVEMENT



NB LANES

FILE NAME =	USER NAME = Timothy.Sharp	DESIGNED -	REVISED -
pw:/idot-pw.bentley.com/PWIDOT/Documents/IDOT Offices/District 6/ORD Projects/D672516/CRANette/CADsheets/72516-sht-6-typicals		CHECKED -	REVISED -
Default	PLOT DATE = 7/29/2024	DATE -	REVISED -

STATE OF ILLINOIS
DEPARTMENT OF TRANSPORTATION

TYPICALS			
SCALE:	SHEET	OF	SHEETS
	STA.	TO	STA.

F.A.I. RTE.	SECTION	COUNTY	TOTAL SHEETS	SHEET NO.
55	D6 PATCHING 2025-2	LOGAN	6	6
CONTRACT NO. 72516				
ILLINOIS FED. AID PROJECT				