

STATE OF ILLINOIS
DEPARTMENT OF TRANSPORTATION

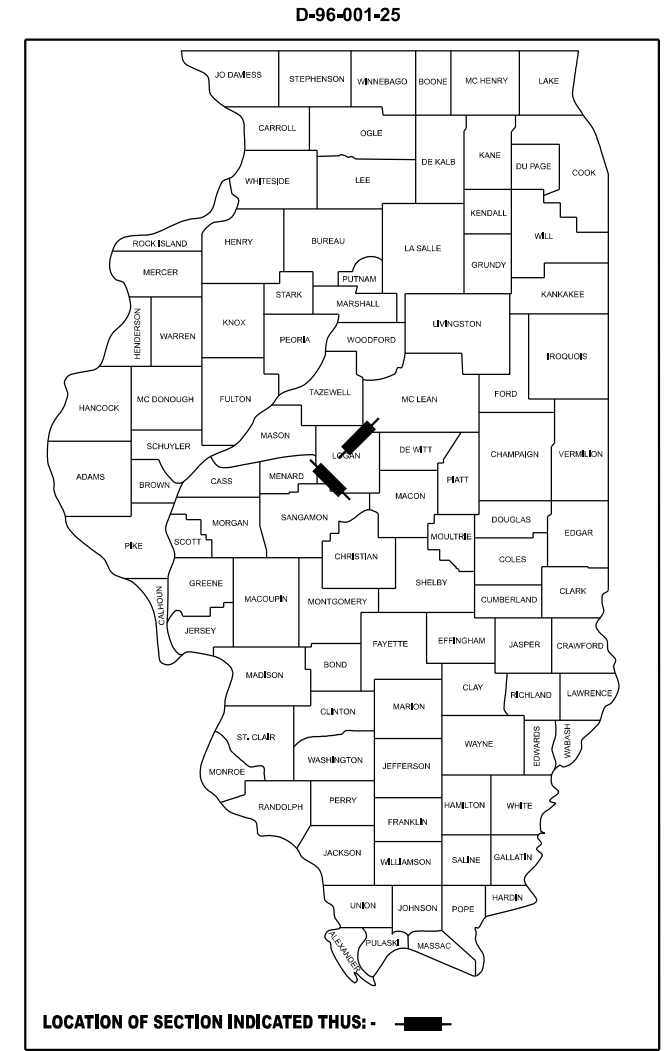
F.A.I. RTE.	SECTION	COUNTY	TOTAL SHEETS	SHEET NO.
I-55	(54-1HB,54-5B)BP	LOGAN	15	1
		ILLINOIS	CONTRACT NO. 72648	

FOR INDEX OF SHEETS, SEE SHEET NO. 2

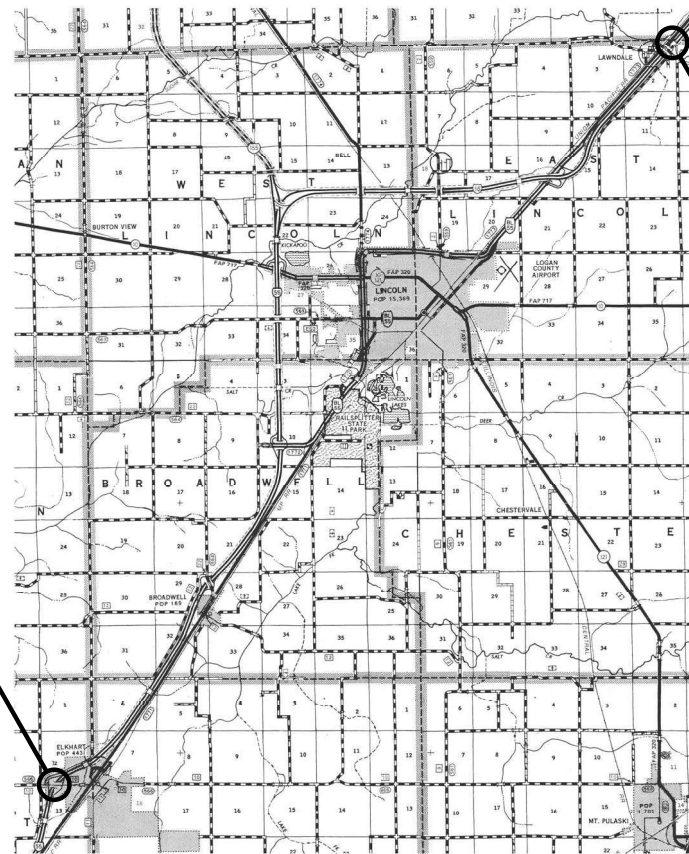
**PROPOSED
HIGHWAY PLANS**

**FAI ROUTE 55 (I-55)
SECTION (54-1HB,54-5B)BP
PROJECT NHPP-L1BB(655)
BRIDGE PAINTING
LOGAN COUNTY**

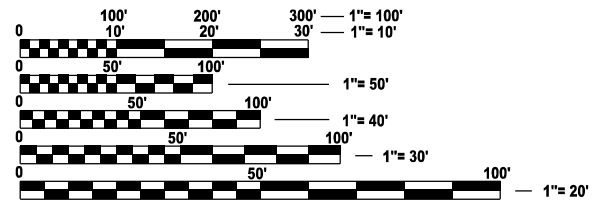
C-96-021-25



LOCATION #1:
SN 054-0038
CH 10 OVER I-55
@ ELKHART OVERHEAD



LOCATIONS #2 & #3:
SN 054-0063 & 0064
I-55 NB & SB OVER KICKAPOO CR.
3.6 MI N BL 55 INT. @ LAWNSDALE



FULL SIZE PLANS HAVE BEEN PREPARED USING STANDARD ENGINEERING SCALES. REDUCED SIZED PLANS WILL NOT CONFORM TO STANDARD SCALES. IN MAKING MEASUREMENTS ON REDUCED PLANS, THE ABOVE SCALES MAY BE USED.

J.U.L.I.E.
JOINT UTILITY LOCATION INFORMATION FOR EXCAVATION
1-800-892-0123
OR 811

**PROJECT ENGINEER: BRANDON DUDLEY (217-785-9290)
PROJECT MANAGER**

GROSS LENGTH = x.xx FT. = x.xxx MILE
NET LENGTH = x.xx FT. = x.xxx MILE

CONTRACT NO. 72648

STATE OF ILLINOIS
DEPARTMENT OF TRANSPORTATION

SUBMITTED August 12, 2024

[Signature]
REGIONAL ENGINEER

October 4, 2024

[Signature]
ENGINEER OF DESIGN AND ENVIRONMENT

October 4, 2024

[Signature]
DIRECTOR OF HIGHWAYS PROJECT IMPLEMENTATION

**PRINTED BY THE AUTHORITY
OF THE STATE OF ILLINOIS**

INDEX OF SHEETS

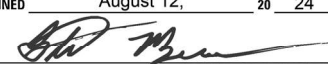
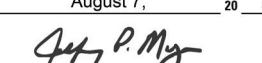
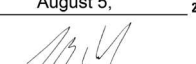
- 1 COVER SHEET
- 2 INDEX, STANDARDS, GENERAL NOTES, & SIGNATURES
- 3-4 SUMMARY OF QUANTITIES
- 5-9 EXISTING BRIDGE PLANS, SN 054-0038
- 10-15 EXISTING BRIDGE PLANS, SN 054-0063 & 0064

HIGHWAY STANDARDS

- 000001-08
- 001006
- 701101-05
- 701106-02
- 701400-12
- 701402-12
- 701411-09
- 701428-01
- 701446-11
- 701901-09
- 704001-08
- 782006-01

GENERAL NOTES:

1. WORK SHALL CONSIST OF BLASTING AND PAINTING STRUCTURAL STEEL AT LOCATIONS DESCRIBED IN THE SPECIAL PROVISIONS. CLEANING AND PAINTING OF THE EXISTING STRUCTURAL STEEL SHALL BE AS SPECIFIED IN THE SPECIAL PROVISIONS FOR "CLEANING AND PAINTING EXISTING STEEL STRUCTURES". ALL AREAS TO BE PAINTED SHALL BE CLEANED PER NEAR WHITE BLAST CLEANING PER SSPC SP 10. ALL EXISTING STEEL CLEANED SHALL BE PAINTED ACCORDING TO THE REQUIREMENTS OF PAINT SYSTEM 1- OZ/E/U. THE COLOR OF THE FINAL FINISH COATS SHALL BE AS DESCRIBED IN THE SPECIAL PROVISIONS.
2. THE USE OF AIR MONITORS WILL BE REQUIRED AT LOCATIONS AS CALLED OUT IN THE SPECIAL PROVISIONS.
3. THE SSPC-QP-1 AND SSPC-QP2 PAINTING CONTRACTOR CERTIFICATIONS WILL BE REQUIRED.
4. CARE SHALL BE TAKEN NOT TO DAMAGE RUBBER BEARING OR JOINT COMPONENTS DURING BLASTING AND CLEANING OPERATIONS. ANY DAMAGE TO THESE COMPONENTS SHALL BE REPAIRED AT THE CONTRACTOR'S EXPENSE. RUBBER COMPONENTS SHALL NOT BE PAINTED.
5. UPON COMPLETION OF PAINTING OPERATIONS, THE CONTRACTOR SHALL REMOVE ALL DEBRIS FROM PIER OR ABUTMENT CAPS UPON WHICH PAINTING OPERATIONS TOOK PLACE. FINAL CLEANUP SHALL BE CONSIDERED INCIDENTAL TO THE PAINT PAY ITEM FOR THE RESPECTIVE LOCATION. THE ENGINEER SHALL HAVE THE RIGHT TO WITHHOLD PAYMENT UNTIL SATISFACTORY CLEANUP IS ACHIEVED.

STATE OF ILLINOIS DEPARTMENT OF TRANSPORTATION DIVISION OF HIGHWAYS DISTRICT 6	
EXAMINED	August 12, 20 24
 ENGINEER OF OPERATIONS	
EXAMINED	August 7, 20 24
 ENGINEER OF PROJECT IMPLEMENTATION	
EXAMINED	August 5, 20 24
 ENGINEER OF PROGRAM DEVELOPMENT	

MODEL: Default
FILE NAME: c:\pwworkspace\oldudby\mvd1020514\00 D672648 File Creation Template.dgn

	USER NAME = brandon.dudley	DESIGNED -	REVISED -	STATE OF ILLINOIS DEPARTMENT OF TRANSPORTATION	INDEX OF SHEETS, STANDARDS GENERAL NOTES, & SIGNATURES	F.A.I. RTE.	SECTION	COUNTY	TOTAL SHEETS	SHEET NO.	
		DRAWN -	REVISED -			55	(54-1HB,54-5B)BP	LOGAN	15	2	
		CHECKED -	REVISED -			CONTRACT NO. 72648					
	PLOT DATE = 7/16/2024	DATE -	REVISED -			SCALE:	SHEET OF SHEETS	STA.	TO STA.	ILLINOIS FED. AID PROJECT	

CODE NO.	ITEM	UNIT	TOTAL QUANTITY	0-01378-6002	0-01378-6002
				NHPP 90/10	NHPP 90/10
				SN 054-0038	SN 054-0063 & 0064
				0047-RURAL	0047-RURAL
				LOGAN	LOGAN
67100100	MOBILIZATION	L SUM	1	0.5	0.5
70100207	TRAFFIC CONTROL AND PROTECTION, STANDARD 701402	EACH	4	2	2
70100420	TRAFFIC CONTROL AND PROTECTION, STANDARD 701411	EACH	2	2	0
70100815	TRAFFIC CONTROL AND PROTECTION, STANDARD 701446	L SUM	1	1	0
70107025	CHANGEABLE MESSAGE SIGN	CAL DA	56	28	28
70200100	NIGHTTIME WORK ZONE LIGHTING	L SUM	1	1	0
70400100	TEMPORARY CONCRETE BARRIER	FOOT	1200	600	600
70400200	RELOCATE TEMPORARY CONCRETE BARRIER	FOOT	600	600	0
70600260	IMPACT ATTENUATORS, TEMPORARY (FULLY REDIRECTIVE, NARROW), TEST LEVEL 3	EACH	4	2	2
70600332	IMPACT ATTENUATORS, RELOCATE (FULLY REDIRECTIVE, NARROW), TEST LEVEL 3	EACH	2	2	0

MODEL: Default
FILE NAME: c:\pwworkspace\old\udby\m\1020514\00 D672648 File Creation Template.dgn

USER NAME = brandon.dudley	DESIGNED -	REVISED -
	DRAWN -	REVISED -
	CHECKED -	REVISED -
PLOT DATE = 7/9/2024	DATE -	REVISED -

**STATE OF ILLINOIS
DEPARTMENT OF TRANSPORTATION**

SUMMARY OF QUANTITIES			
SCALE:	SHEET	OF SHEETS	STA. TO STA.

F.A.I. RTE.	SECTION	COUNTY	TOTAL SHEETS	SHEET NO.
55	(54-1HB,54-5B)BP	LOGAN	15	3
CONTRACT NO. 72648				
ILLINOIS FED. AID PROJECT				

MODEL: Default
FILE NAME: c:\p\work\pwwid\duley\mtd1020514\00 D672648 File Creation Template.dgn

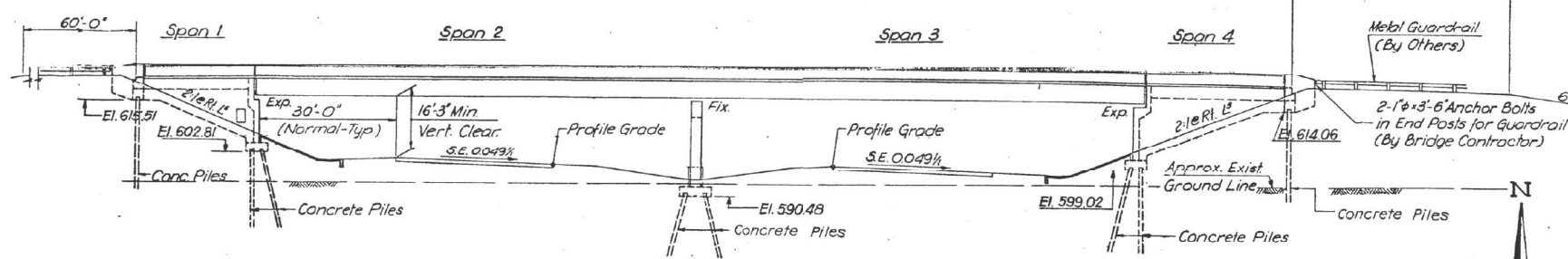
CODE NO.	ITEM	UNIT	TOTAL QUANTITY	0-01378-6002	0-01378-6002
				NHPP 90/10	NHPP 90/10
				SN 054-0038	SN 054-0063 & 0064
				0047-RURAL	0047-RURAL
				LOGAN	LOGAN
Z0007101	CONTAINMENT AND DISPOSAL OF LEAD PAINT CLEANING RESIDUES NO. 1	L SUM	1	1	0
Z0007102	CONTAINMENT AND DISPOSAL OF LEAD PAINT CLEANING RESIDUES NO. 2	L SUM	1	0	1
Z0007103	CONTAINMENT AND DISPOSAL OF LEAD PAINT CLEANING RESIDUES NO. 3	L SUM	1	0	1
Z0010501	CLEANING AND PAINTING STEEL BRIDGE NO. 1	L SUM	1	1	0
Z0010502	CLEANING AND PAINTING STEEL BRIDGE NO. 2	L SUM	1	0	1
Z0010503	CLEANING AND PAINTING STEEL BRIDGE NO. 3	L SUM	1	0	1
Ø Z0076600	TRAINEES	HOUR	500	500	
Ø Z0076604	TRAINEES TRAINING PROGRAM GRADUATE	HOUR	500	500	

Ø 0042

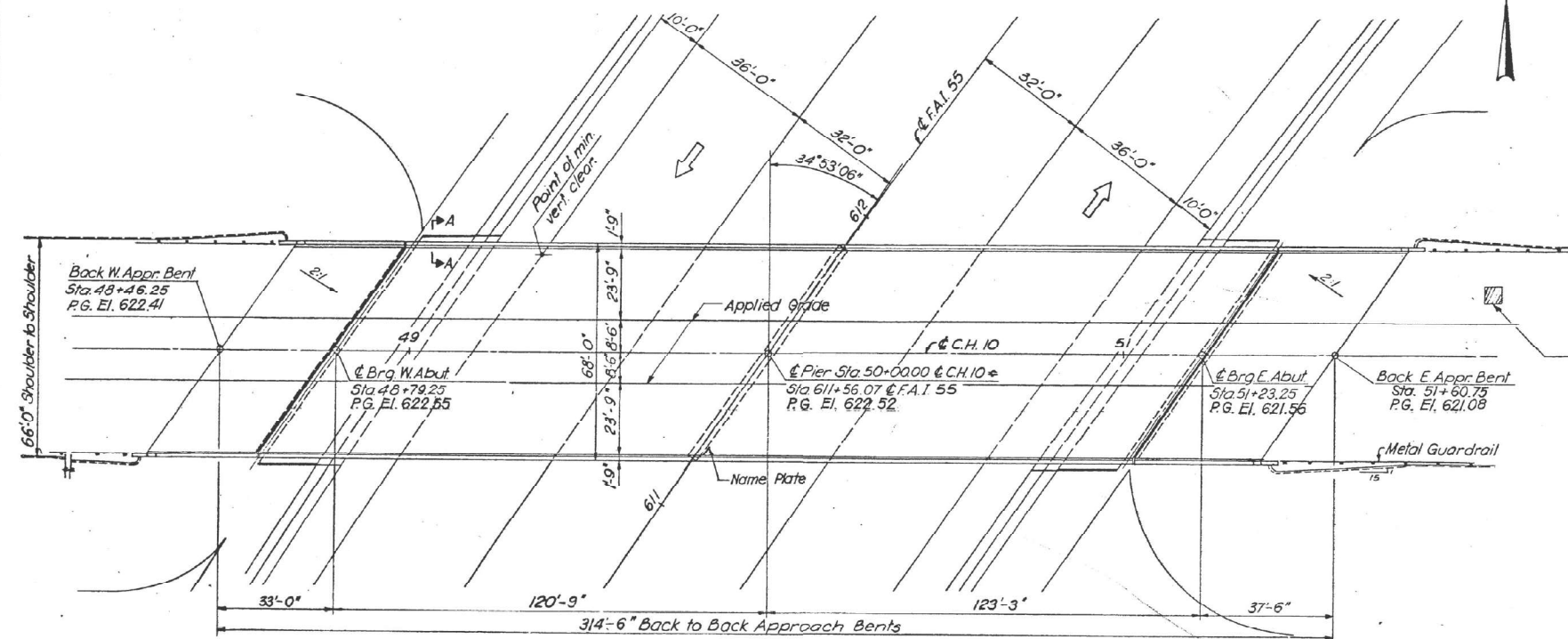
REV - MS

<table border="1" style="width:100%; border-collapse: collapse;"> <tr><td>USER NAME = brandon.dudley</td><td>DESIGNED -</td><td>REVISED -</td></tr> <tr><td></td><td>DRAWN -</td><td>REVISED -</td></tr> <tr><td></td><td>CHECKED -</td><td>REVISED -</td></tr> <tr><td>PLOT DATE = 7/9/2024</td><td>DATE -</td><td>REVISED -</td></tr> </table>	USER NAME = brandon.dudley	DESIGNED -	REVISED -		DRAWN -	REVISED -		CHECKED -	REVISED -	PLOT DATE = 7/9/2024	DATE -	REVISED -	STATE OF ILLINOIS DEPARTMENT OF TRANSPORTATION	SUMMARY OF QUANTITIES	<table border="1" style="width:100%; border-collapse: collapse;"> <tr> <th>F.A.I. RTE.</th> <th>SECTION</th> <th>COUNTY</th> <th>TOTAL SHEETS</th> <th>SHEET NO.</th> </tr> <tr> <td>55</td> <td>(54-1HB,54-5B)BP</td> <td>LOGAN</td> <td>15</td> <td>4</td> </tr> <tr> <td colspan="5" style="text-align: center;">CONTRACT NO. 72648</td> </tr> </table>	F.A.I. RTE.	SECTION	COUNTY	TOTAL SHEETS	SHEET NO.	55	(54-1HB,54-5B)BP	LOGAN	15	4	CONTRACT NO. 72648					<table border="1" style="width:100%; border-collapse: collapse;"> <tr> <td>SCALE:</td> <td>SHEET</td> <td>OF</td> <td>SHEETS</td> <td>STA.</td> <td>TO STA.</td> </tr> <tr> <td> </td> <td> </td> <td> </td> <td> </td> <td> </td> <td> </td> </tr> </table>	SCALE:	SHEET	OF	SHEETS	STA.	TO STA.						
USER NAME = brandon.dudley	DESIGNED -	REVISED -																																									
	DRAWN -	REVISED -																																									
	CHECKED -	REVISED -																																									
PLOT DATE = 7/9/2024	DATE -	REVISED -																																									
F.A.I. RTE.	SECTION	COUNTY	TOTAL SHEETS	SHEET NO.																																							
55	(54-1HB,54-5B)BP	LOGAN	15	4																																							
CONTRACT NO. 72648																																											
SCALE:	SHEET	OF	SHEETS	STA.	TO STA.																																						
			ILLINOIS FED. AID PROJECT																																								

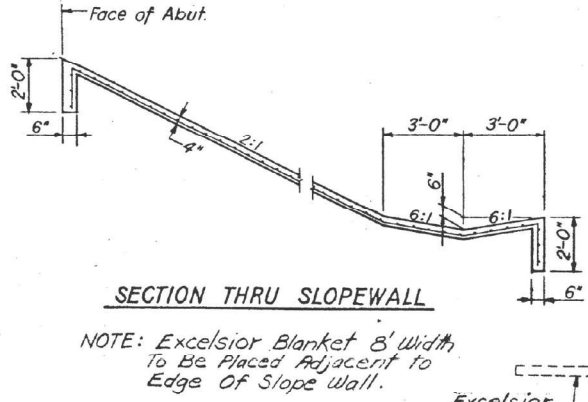
B.M. *34-2, El. 599.16, R.R. Spike
in Pole Rt. Sta. 44+97



ELEVATION



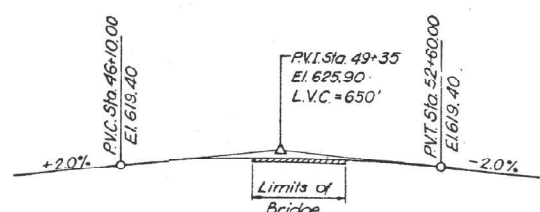
PLAN



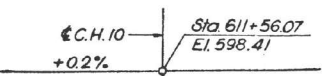
SECTION THRU SLOPEWALL

NOTE: Excelsior Blanket 8' width
to be placed adjacent to
Edge of Slope Wall.

DESIGNED BY: H.N.
DRAWN BY: B.B.
CHECKED BY: H.N.



C.H. 10 - PROFILE GRADE

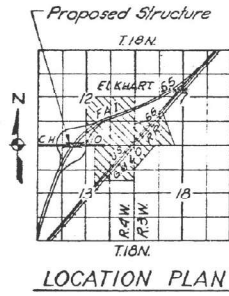


PROFILE ALONG F.A.I. -55

F.A.I. -55 CURVE DATA
P.I. = Sta 615+26.56
Δ = 55° 59' 57"
D = 1' 45"
R = 3274.05'
L = 3199.95'
T = 1740.81'
P.C. = Sta 597+85.75
P.T. = Sta 629+85.70

APPROVED
FOR STRUCTURAL ADEQUACY ONLY
Carey Engineering
Engineer of Bridge & Traffic Structures

DESIGN STRESSES AND LOADS
* f's - 248,000 psi } Prestressing Steel
f'si - 173,600 psi }
f'c - 3,000 psi } Prestressed Concrete
f'ci - 4,000 psi }
f'c - 1,400 psi } Superstructure
f's - 20,000 psi } Structural Steel (A-36)
f's - 20,000 psi } Reinforcement
f'c - 75 psi } Footings
n = 10
max. allow. Live Load Defl. = $\frac{L}{1200}$ (Comp)
LOADING: HS20-44
Future Wearing Surface = 25#/Sq Ft.
* Alternate f's = 270,000 psi is permitted



LOCATION PLAN

NOTE: See Special Provisions For
Settlement Platform in The
Embankment Construction At The
East Abutment. See Sheet No. 14
For Detail.

STATION 611+56.07
BUILT 197 BY
STATE OF ILLINOIS
F.A.I. RT. 55 SEC. 54-1HB
F.A.I. PROJ. I-55-4(75)114
LOADING HS20

NAME PLATE
See Std. 2113

Settlement Platform
@ Sta. 52+00, 13 Ft.
Left of C.H. 10.

ROUTE NO.	SECTION	COUNTY	TOTAL SHEETS	SHEET NO.
F.A.I. - 55	54-1HB	LOGAN	60	25
FED. ROAD DIV. NO. 7	ILLINOIS	PROJECT I-55-4(75)114		

GENERAL NOTES

THE CONCRETE RAIL SECTION ABOVE THE MANDATORY CONSTR. JOINT AT THE TOP OF THE SLAB SHALL BE CONSTRUCTED OF CLASS X CONCRETE EXCEPT THE AGGREGATES SHALL CONFORM TO THE REQUIREMENTS OF HANDRAIL CONCRETE.

ALL REINFORCEMENT BARS SHALL BE LAPPED 24 DIAMETERS UNLESS OTHERWISE SHOWN.

FASTENERS SHALL BE HIGH STRENGTH BOLTS; BOLTS 3/4" ϕ , OPEN HOLES 13/16" ϕ , UNLESS OTHERWISE NOTED.

THE BASIC LEAD SILICO CHROMATE PAINT SYSTEM SHALL BE USED FOR SHOP AND FIELD PAINTING OF STRUCTURAL STEEL.

FIELD WELDING OF CONSTRUCTION ACCESSORIES WILL NOT BE PERMITTED IN THE BOTTOM OF FLANGE OF BEAMS OR GIRDERS NOR ON THE TOP FLANGE FOR A DISTANCE EQUAL TO ONE-FOURTH THE SPAN LENGTH EACH WAY FROM THE PIER SUPPORTS. FIELD WELDING IN OTHER AREAS WILL BE PERMITTED ONLY WHEN APPROVED BY THE ENGINEER.

ANCHOR BOLTS SHALL BE SET BEFORE BOLTING CROSS FRAMES OVER SUPPORTS.

SLOPE WALL SHALL BE REINFORCED WITH WELDED WIRE FABRIC 6" X 6" MESH, WEIGHING 58# PER 100 SQ. FT.

THE CONTRACTOR SHALL DRIVE THREE (3) CONCRETE TEST PILES IN PERMANENT LOCATION, ONE AT THE EAST ABUT., ONE AT WEST ABUT. AND ONE AT PIER, AS DIRECTED BY THE ENGINEER BEFORE ORDERING THE REMAINDER OF PILES.

CONCRETE PILES AT ABUT. BENTS SHALL BE DRIVEN IN HOLES PRECORED THROUGH THE EMBANKMENT IN ACCORDANCE WITH ARTICLE 51309 (c) OF THE STANDARD SPECIFICATIONS.

THE EMBANKMENT CONFIGURATION SHOWN SHALL BE THE MINIMUM EMBANKMENT THAT MUST BE CONSTRUCTED PRIOR TO CONSTRUCTION OF THE ABUTMENTS.

CALCULATED WEIGHT OF STRUCTURAL STEEL = 559,350 LBS.

TOTAL BILL OF MATERIAL

Item	Unit	Super	Sub	Total
Structure Excavation	Cu Yds	—	108	108
Class X Concrete	Cu Yds	6930	519.7	1,212.7
Protective Coat	Sq Yds	2,580	—	2,580
Furnishing and Erecting Structural Steel	Lump Sum	1	—	1
Reinforcement Bars	Lbs	182,360	49,990	232,350
Bridge Seat Sealer **	Lump Sum	—	1	1
Furnishing Concrete Piles	Lin Ft	—	7803	7803
Driving Concrete Piles	Lin Ft	—	7803	7803
Test Pile Concrete	Ea	—	3	3
Name Plates	Ea	—	1	1
Slope Wall 4'	Sq Yds	—	534	534
Sandblasting Concrete	Sq Yds	137	—	137
Stud Shear Connectors	Each	2,810	—	2,810
Furnishing and Erecting Precast Prestressed Concrete I-Beams (36")	Lin Ft	448	—	448

** At Abutments only

REEL 6-7'

STATE OF ILLINOIS

GENERAL PLAN
C.H. 10 OVER F.A.I. ROUTE 55

STATION 611+56.07
PROJECT I-55-4(75)114
F.A.I. RT. 55 LOGAN COUNTY SECTION 54-1HB

H. W. LOCHNER, INC.
ENGINEERS
CHICAGO, ILLINOIS

SHEET
1 of 14

MODEL: Default
FILE NAME: c:\pwworking\brandon.dudley\mydwg\1020514\00_D672648_File_Creation_Template.dgn

1385

USER NAME	DESIGNED	REVISIONS
brandon.dudley	-	-
	DRAWN	REVISIONS
	-	-
	CHECKED	REVISIONS
	-	-
	DATE	REVISIONS
	-	-

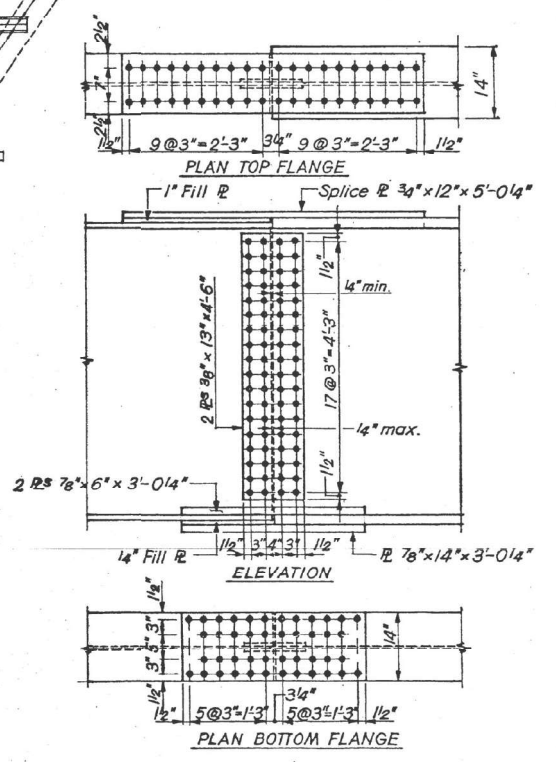
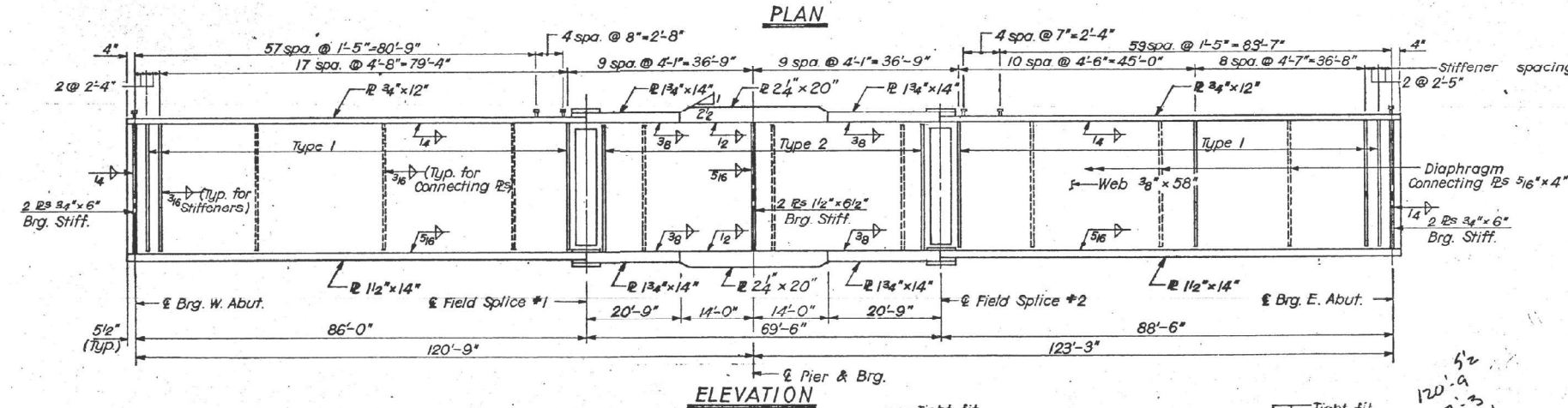
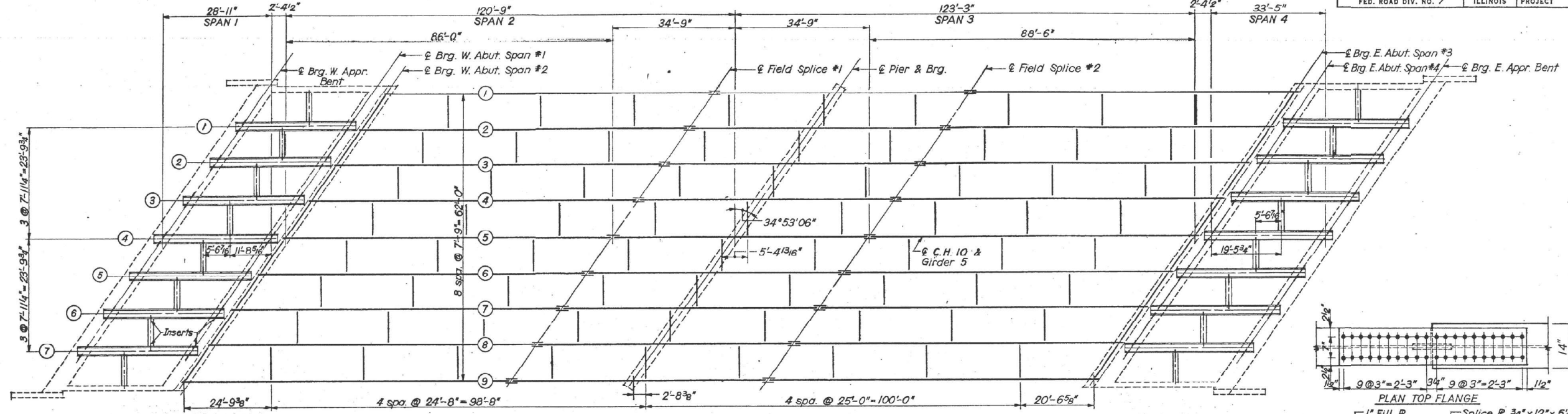
STATE OF ILLINOIS
DEPARTMENT OF TRANSPORTATION

EXISTING BRIDGE PLANS - SN 054-0038
(FOR INFORMATION ONLY)

SCALE: SHEET OF SHEETS STA. TO STA.

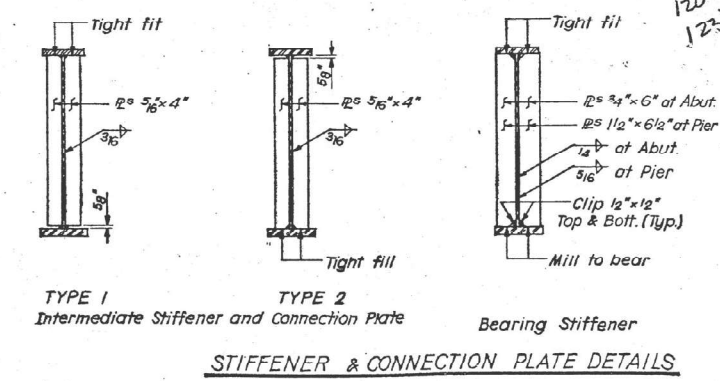
F.A.I. RTE.	SECTION	COUNTY	TOTAL SHEETS	SHEET NO.
55	(54-1HB,54-5B)BP	LOGAN	15	5
				CONTRACT NO. 72648
		ILLINOIS	FED. AID PROJECT	

ROUTE NO.	SECTION	COUNTY	TOTAL SHEETS	SHEET NO.
F.A.I.-55	54-1HB	LOGAN	60	30
FED. ROAD DIV. NO. 7		ILLINOIS	PROJECT	



TOP OF GIRDER WEB ELEVATIONS FOR FABRICATION (DEFLECTION NOT INCLUDED)

Location	Girder 1	Girder 2	Girder 3	Girder 4	Girder 5	Girder 6	Girder 7	Girder 8	Girder 9
Br. W. Abut.	621.495	621.605	621.715	621.825	621.925	621.785	621.645	621.495	621.355
Splice #1	621.325	621.462	621.601	621.740	621.868	621.755	621.645	621.523	621.411
Br. Pier	621.139	621.289	621.439	621.589	621.729	621.629	621.529	621.419	621.319
Splice #2	620.953	621.116	621.277	621.438	621.590	621.503	621.413	621.315	621.227
Br. E. Abut.	620.185	620.365	620.555	620.745	620.925	620.865	620.805	620.745	620.685



STATE OF ILLINOIS

FRAMING PLAN

C.H. 10 OVER F.A.I. ROUTE 55

STATION 611+56.07

F.A.I. RT. 55 LOGAN COUNTY SECTION 54-1HB

H. W. LOCHNER, INC. ENGINEERS CHICAGO, ILLINOIS

SHEET 6 OF 14

DESIGNED BY: H.N.
 DRAWN BY: B.B.
 CHECKED BY: V.B.

USER NAME = brandon.dudley	DESIGNED -	REVISED -
	DRAWN -	REVISED -
	CHECKED -	REVISED -
PLOT DATE = 7/9/2024	DATE -	REVISED -

STATE OF ILLINOIS
 DEPARTMENT OF TRANSPORTATION

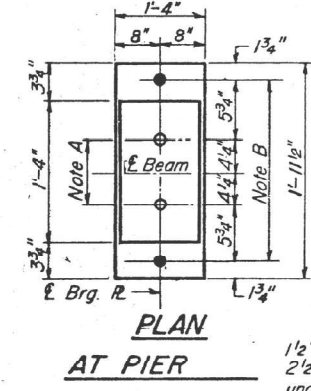
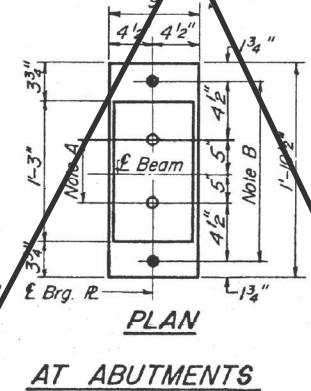
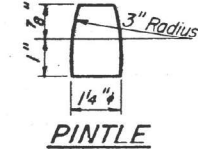
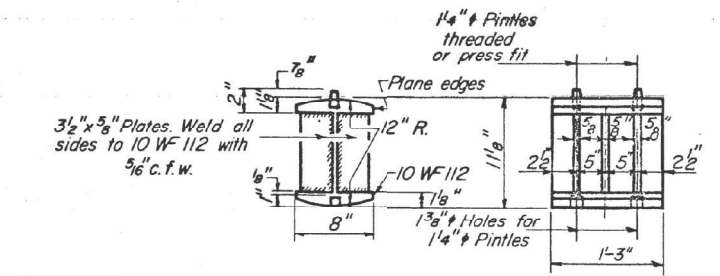
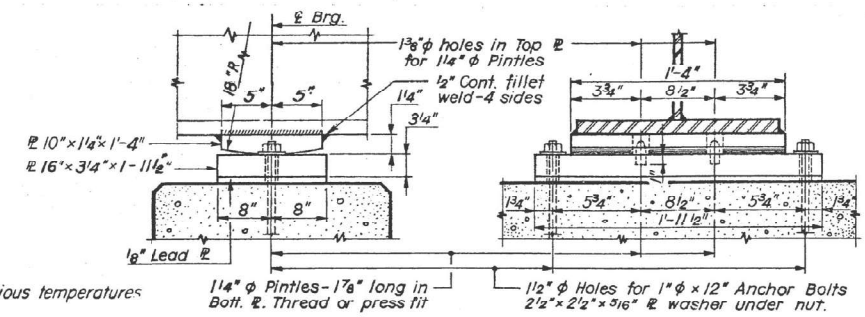
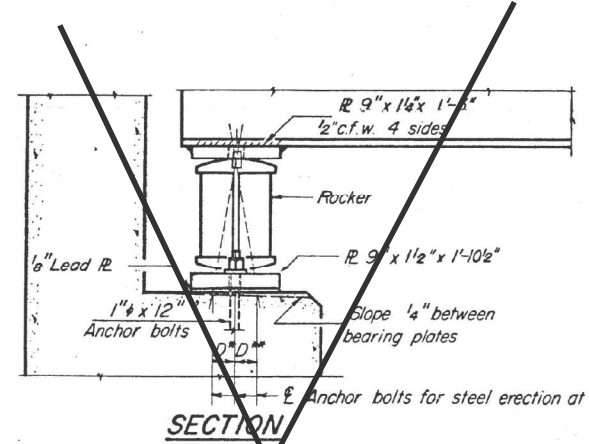
EXISTING BRIDGE PLANS - SN 054-0038
 (FOR INFORMATION ONLY)

SCALE: SHEET OF SHEETS STA. TO STA.

F.A.I. RTE. 55	SECTION (54-1HB,54-5B)BP	COUNTY LOGAN	TOTAL SHEETS 15	SHEET NO. 6
CONTRACT NO. 72648				
ILLINOIS		FED. AID PROJECT		

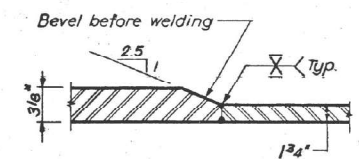
MODEL: Default
 FILE NAME: c:\pwworkspace\brandon.dudley\1020514100 D672648 File Creation Template.dgn

ROUTE NO.	SECTION	COUNTY	TOTAL SHEETS	SHEET NO.
F.A.I. 55	54-1HB	LOGAN	60	31
FED. ROAD DIV. NO. 7		ILLINOIS PROJECT		



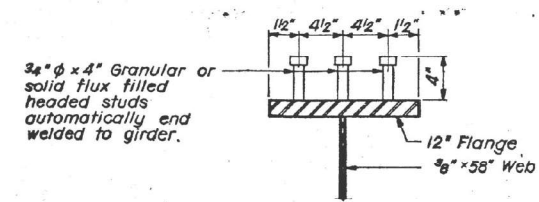
NOTE A
1 1/2" Holes - 1" deep in top R for pintles. Thread or press fit into bottom R.

NOTE B
1 1/2" Holes for 1" anchor bolts. 2 1/2" x 2 1/2" x 3/16" R. Washers under nut.

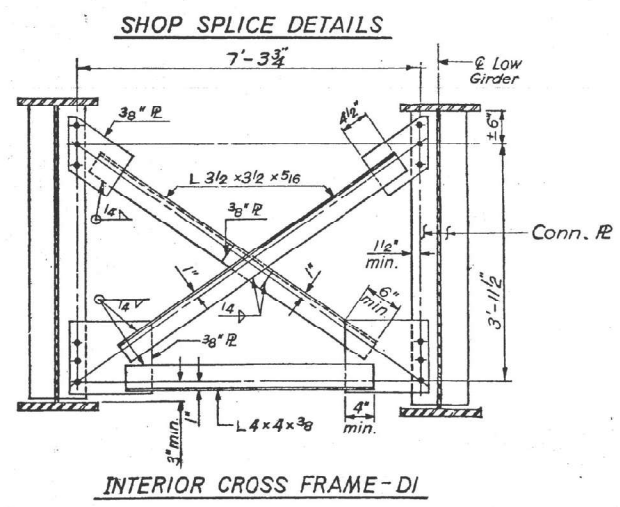
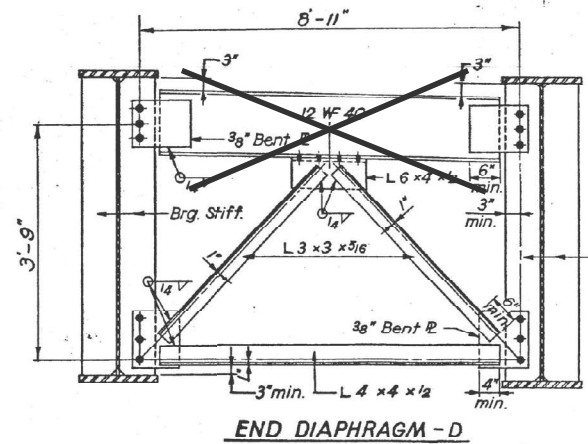


NOTES ON SETTING OF ANCHOR BOLTS AT EXP. BRGS.

- a) D^* (Side of brg. away from fixed brg.)
 $D^* = 1/8$ " per each 100' of expansion for every 15° fall below the normal temp. of 50°F.
- D^{**} (Side of brg. toward fixed brg.)
 $D^{**} = 1/8$ " per each 100' of expansion for every 15° rise above the normal temp. of 50°F.
- b) After beams have been erected and dimensions D^* or D^{**} determined, holes shall be drilled and anchor bolts shall be grouted in place. All fixed anchor bolts may be built into the masonry.



DESIGNED BY: H.N.
DRAWN BY: B.B.
CHECKED BY: H.N.



INTERIOR GIRDER MOMENT TABLE

	0.4 Sp. 2	Pier	0.4 Sp. 3
I_a (in ⁴)	29,940	87,773	29,940
I_c (in ⁴)	80,232	—	80,232
S_s (in ³)	1272	2809	1272
S_c (in ³)	1694	—	1694
Q (in ²)	1.052	1.316	1.052
M_a (k)	811	3054	880
$f_s Q$ (ksi)	7.65	13.05	8.30
$S Q$ (k/in)	0.264	—	0.264
$M_s Q$ (k)	260	—	278
M_u (k)	1087	1160	1100
M_{imp} (k)	221	235	222
TOTAL (k)	1568	1395	1600
$f_s Q$ (ksi)	11.11	5.96	11.33
f_s TOTAL (ksi)	18.76	19.01	19.63
VR (k)	636	—	—

INTERIOR GIRDER REACTION TABLE

	W. Abut.	Pier	E. Abut.
R_a (k)	53.8	210.0	55.8
R_b (k)	46.7	87.7	46.7
Imp. (k)	9.4	17.9	9.4
R TOTAL (k)	109.9	315.6	111.9

STATE OF ILLINOIS
BEARING DETAILS
 C.H. 10 OVER F.A.I. RT. 55
 STATION 611+56.07
 F.A.I. RT. 55 LOGAN COUNTY SECTION 54-1HB
 M. W. LOCHNER, INC.
 ENGINEERS
 CHICAGO, ILLINOIS
 SHEET NO. 7 of 14

MODEL: Default
 FILE NAME: c:\pwworking\brandon.dudley\mvd1020514\00 D672648 File Creation Template.dgn

USER NAME = brandon.dudley	DESIGNED -	REVISED -
	DRAWN -	REVISED -
	CHECKED -	REVISED -
PLOT DATE = 7/9/2024	DATE -	REVISED -

STATE OF ILLINOIS
 DEPARTMENT OF TRANSPORTATION

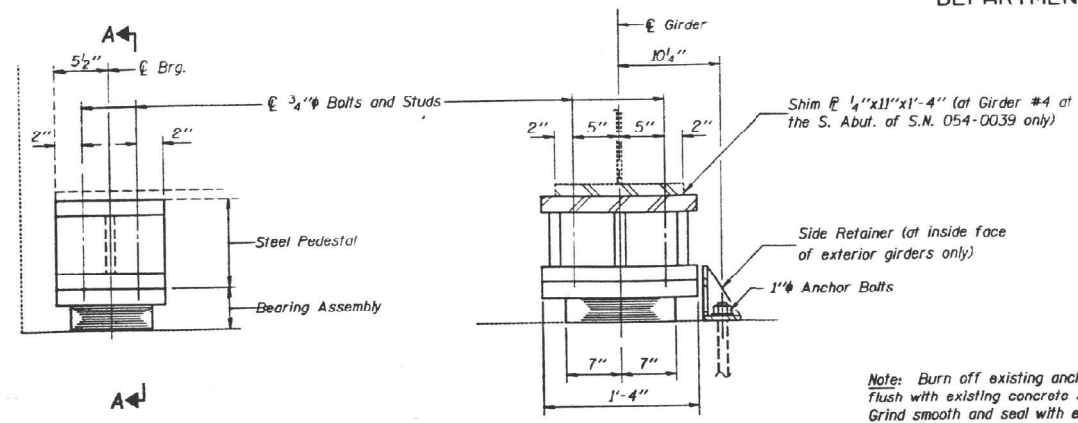
EXISTING BRIDGE PLANS - SN 054-0038
 (FOR INFORMATION ONLY)
 SCALE: SHEET OF SHEETS STA. TO STA.

F.A.I. RTE. 55	SECTION (54-1HB,54-5B)BP	COUNTY LOGAN	TOTAL SHEETS 15	SHEET NO. 7
CONTRACT NO. 72648				ILLINOIS FED. AID PROJECT

STATE OF ILLINOIS
DEPARTMENT OF TRANSPORTATION

ROUTE NO.	SECTION	COUNTY	SHEETS	SHEET NO.
F.A.I. 55	X	LOGAN	22	29
SHEETS				

* 54-2RS & (1HB, 2HB) J

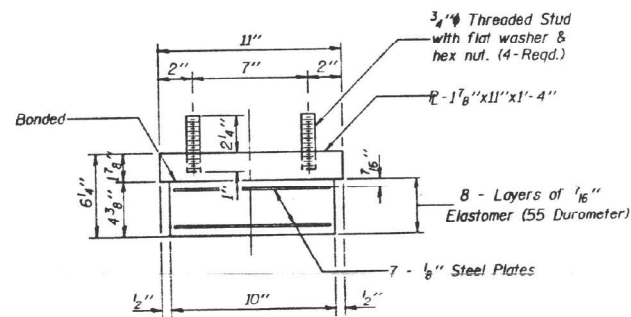


ELEVATION AT ABUT.

SECTION A-A
(Showing Exterior Girder)

TYPE I ELASTOMERIC EXP. BRG.

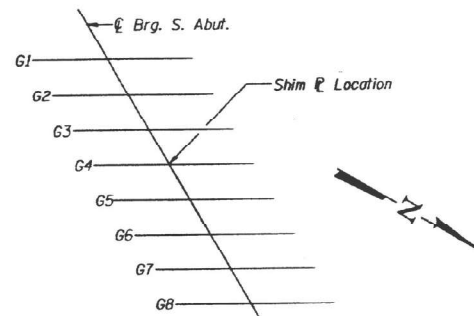
Note: Before installing the new bearings, remove the top flange of the existing bearing assembly from the bottom flange of the girders and grind smooth all weld material remaining on the bottom flange. Cost is incidental to "F.&E. Structural Steel".



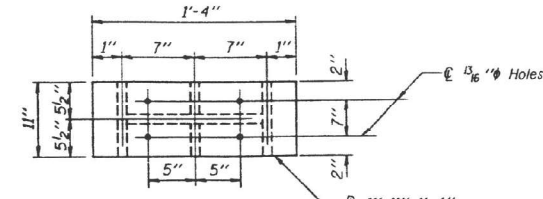
BEARING ASSEMBLY

Note: Shim plates shall not be placed under Bearing Assembly.

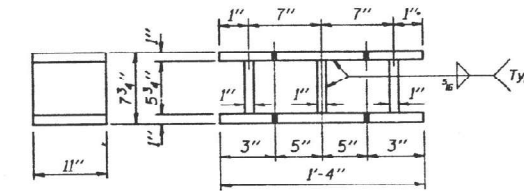
Note: Burn off existing anchor bolts flush with existing concrete surface. Grind smooth and seal with epoxy.



GIRDER LAYOUT
(S.N. 054-0039)



PLAN - TOP & BOTTOM



END VIEW

ELEVATION
No. Req'd: 18 - S.N. 054-0038
16 - S.N. 054-0039

BEAM REACTIONS

	S.N. 054-0038	S.N. 054-0039
Live Load	46.7 k	47.2 k
Dead Load	55.8 k	54.9 k
Impact	9.4 k	9.8 k

Note: Diaphragm removal and replacement may be required to facilitate drilling holes in bottom flange for bearing attachment. Cost is incidental to "F.&E. Struct. Steel".

BILL OF MATERIAL

(For Two Structures)

Item	Unit	Total
Elastomeric Bearing Assembly Type 1	Each	34
Furnishing and Erecting Structural Steel	Lbs.	6290

EAST AND WEST ABUTMENTS - S.N. 054-0038
NORTH AND SOUTH ABUTMENTS - S.N. 054-0039

ELASTOMERIC BEARINGS

F.A.I. RT. 55 SEC. 54-2RS
LOGAN COUNTY

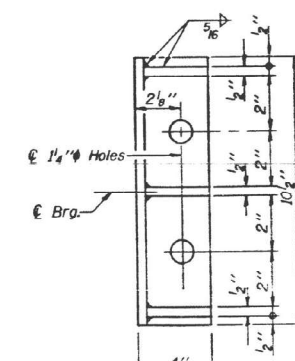
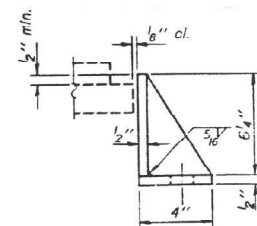
STA. 611+56.07 (S.N. 054-0038)
STA. 867+32.79 (S.N. 054-0039)

(S.N. 054-0038, 0039)

SIDE RETAINER

Equivalent rolled angle with stiffeners will be allowed in lieu of welded plates.

Note: New side retainers, shim E's, pedestals, drilling of holes in bottom flanges, and anchor bolts are included in "F.&E. Structural Steel".



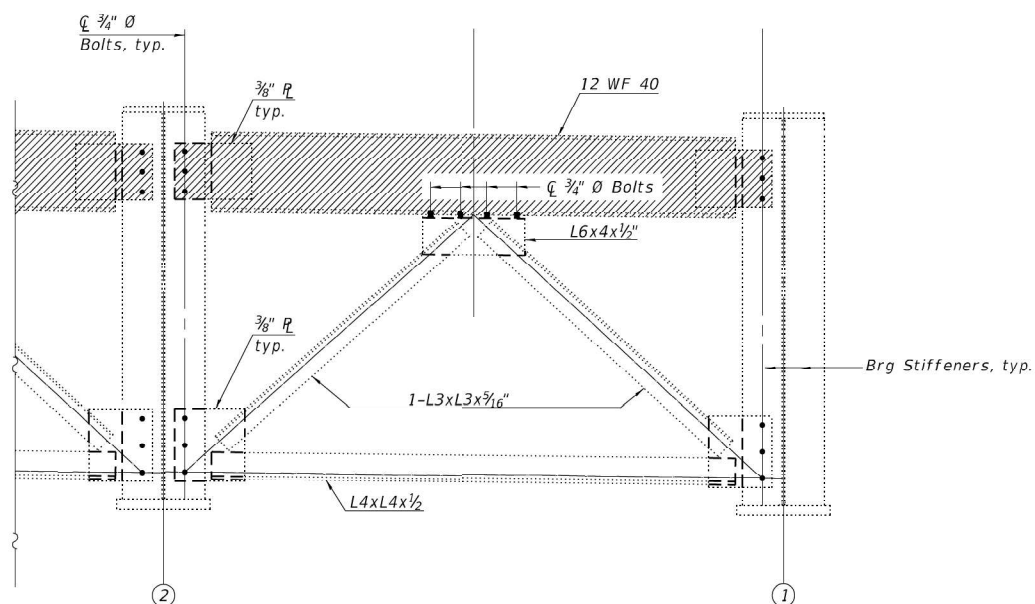
DESIGNED	TPN CHW	EXAMINED	August 8 19 91
CHECKED	CHW RAE	PASSED	DIRECTOR OF STRUCTURAL SERVICE
DRAWN	F. B. CARDONE	APPROVED	ENGINEER OF BRIDGES AND STRUCTURES
CHECKED	CHW RAE		DIRECTOR OF HIGHWAYS

I-2-E1 12-1-53

MODEL: Default
FILE NAME: c:\pwworkspace\duffy\mvd102051400 D672648 File Creation Template.dgn

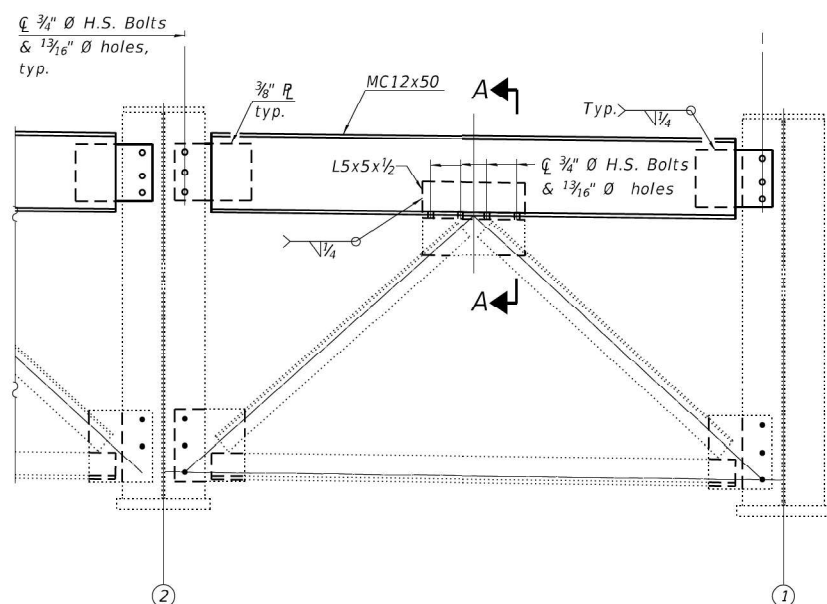
USER NAME = brandon.dudley	DESIGNED -	REVISED -	STATE OF ILLINOIS DEPARTMENT OF TRANSPORTATION	EXISTING BRIDGE PLANS - SN 054-0038 (FOR INFORMATION ONLY)	F.A.I. RTE.	SECTION	COUNTY	TOTAL SHEETS	SHEET NO.	
DESIGNED -	DRAWN -	REVISED -			55	(54-1HB,54-5B)BP	LOGAN	15	8	
DESIGNED -	CHECKED -	REVISED -			CONTRACT NO. 72648					
DESIGNED -	DRAWN -	REVISED -			ILLINOIS FED. AID PROJECT					
PLOT DATE = 7/9/2024	DATE -	REVISED -	SCALE:	SHEET OF SHEETS	STA.	TO STA.				

MODEL: Default
 FILE NAME: c:\pwworking\brandon.dudley\mtd1020514\00 D672648 File Creation Template.dgn
 MODEL: Default
 FILE NAME: p:\w\brandon.dudley\mtd1020514\Documents\BFPV\PROJECTS\2022 PROJECTS\22060 - IDOT D6 PTB 201-36 W0#2 Elkhart CN 72664\DOTStructures\CAD\Final Plans\354003B-72664-02-Structural Repair Details.dgn
 11/29/2022 4:07:45 PM



EXISTING END DIAPHRAGM PARTIAL REMOVAL DETAIL

Remove portion of each end diaphragm at both the W. Abut. and E. Abut. (16 Locations).
(Cost included with Structural Steel Repair)
(Looking West)
(West Abutment Shown - East Abutment Similar)



EXISTING END DIAPHRAGM REPAIR DETAIL

Repair portion of each end diaphragm at both the W. Abut. and E. Abut. (16 Locations).
(Cost included with Structural Steel Repair)
(Looking West)
(West Abutment Shown - East Abutment Similar)

LEGEND

- To be Removed

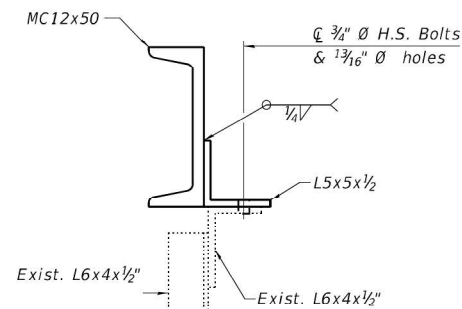
BOLT HOLE LEGEND

○ or □ - Field drill using existing steel as template

Note:
Two hardened washers required for each diaphragm connection.

BILL OF MATERIAL

Item	Unit	Total
Structural Steel Repair	Pound	7510



SECTION A-A

BACON | FARMER | WORKMAN
ENGINEERING & TESTING, INC.
403 NORTH COURT STREET
MORNING, ILLINOIS 60438
PHONE: 815.937.9100

USER NAME =	DESIGNED - JGY	REVISED -
	CHECKED - GBR	REVISED -
PLOT SCALE =	DRAWN - JGY	REVISED -
PLOT DATE =	CHECKED - GBR	REVISED -

**STATE OF ILLINOIS
DEPARTMENT OF TRANSPORTATION**

**STRUCTURAL REPAIR DETAILS
STRUCTURE NO. 054-0038**

F.A.I. RTE.	SECTION	COUNTY	TOTAL SHEETS	SHEET NO.
55	(54-1) RS-3; (54-1) HBID, BRR	LOGAN	120	85
CONTRACT NO. 72K64				
ILLINOIS FED. AID PROJECT				

11/29/2022 4:07:45 PM

**STATE OF ILLINOIS
DEPARTMENT OF TRANSPORTATION**

**EXISTING BRIDGE PLANS - SN 054-0038
(FOR INFORMATION ONLY)**

F.A.I. RTE.	SECTION	COUNTY	TOTAL SHEETS	SHEET NO.
55	(54-1) HB, (54-5B) BP	LOGAN	15	9
CONTRACT NO. 72648				
ILLINOIS FED. AID PROJECT				

SCALE: SHEET OF SHEETS STA. TO STA.

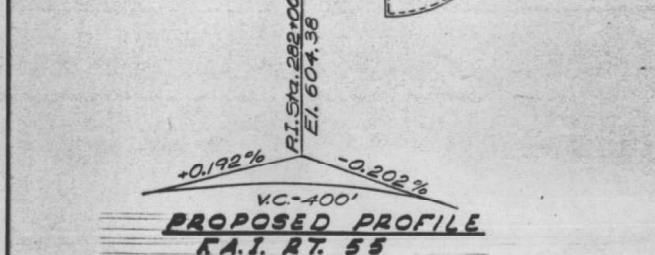
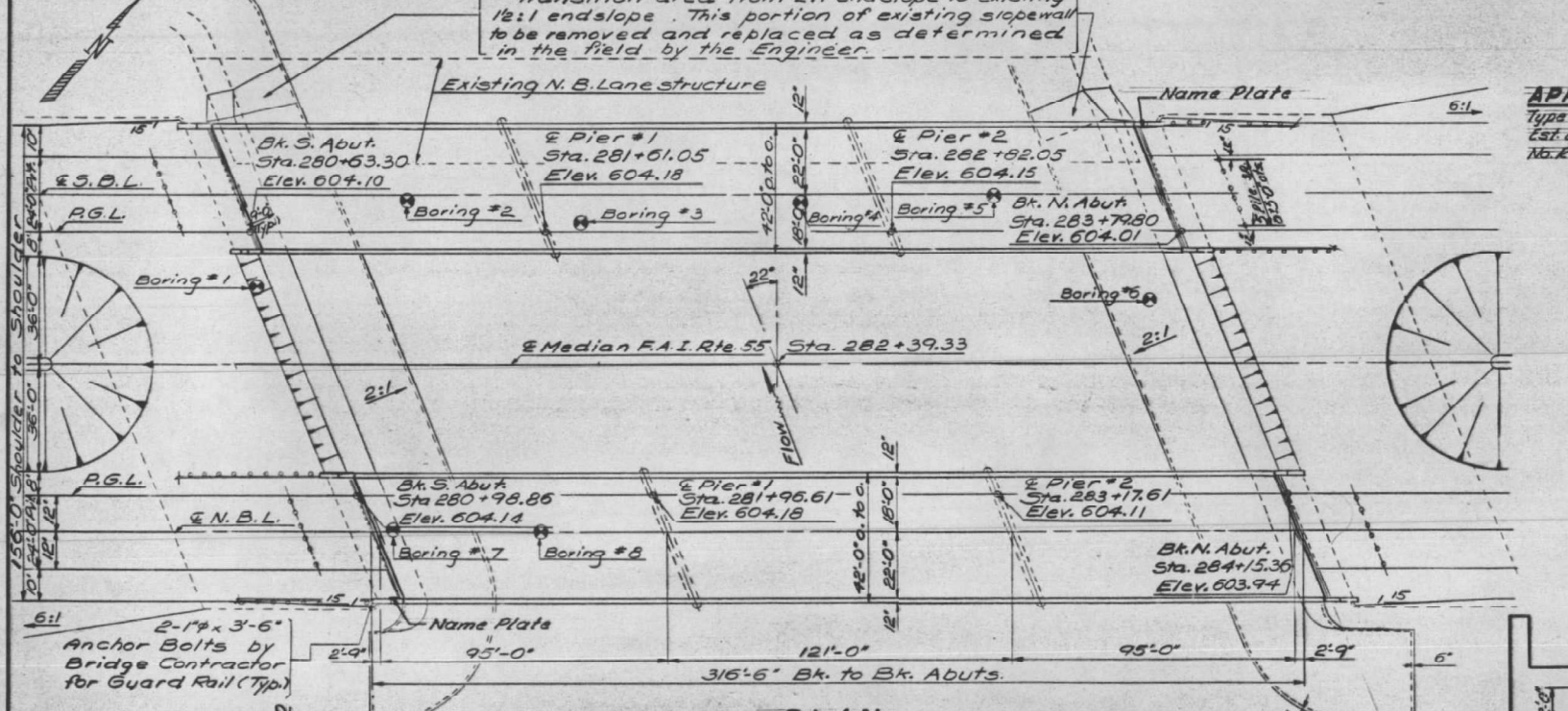
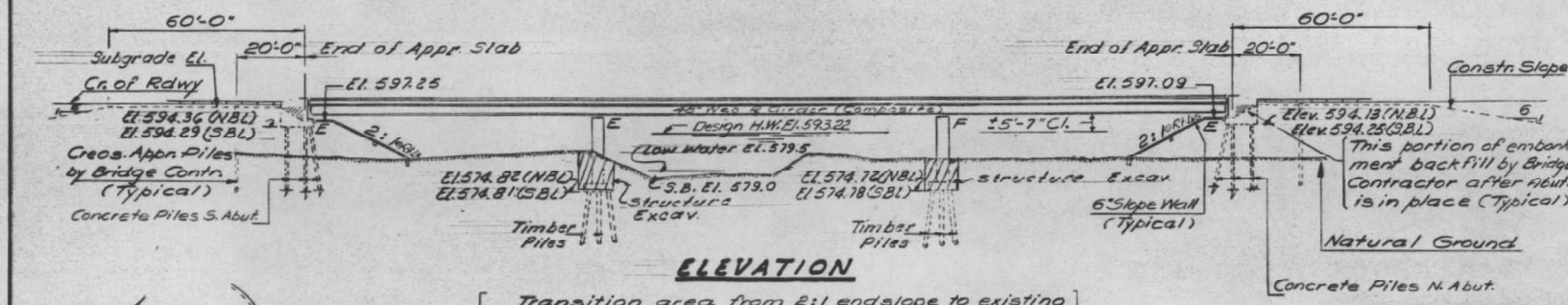
B.M.: B.M. #56 - Top of R.O.W. Marker 13' Rt. of Sta. 280+21 - Elev. 590.18

The existing N.B. bridge @ Sta. 282+16.7 shall be removed by the Bridge Contractor after the proposed N.B. structure is built.

21-R-B
281+96.09

STATE OF ILLINOIS
DEPARTMENT OF TRANSPORTATION

ROUTE NO.	DISTRICT	COUNTY	TOTAL SHEETS	SHEET NO.	SHEET NO. / TOTAL SHEETS
54-58	54-58	Logan	116	26	21 SHEETS



DESIGNED	EXAMINED	DATE
CHECKED	PASSED	OCTOBER 27 1970
DRAWN	APPROVED	
CHECKED		

WATERWAY INFORMATION

Drainage Area	284.4 Sq. miles
Character	Level
Required Opening (50 yr. Flood)	2150 sq. ft.
Present Opening	2775 sq. ft.
Proposed Opening	2150 sq. ft.
Ordinary Water Elev.	580.5
Low Water Elev.	579.5
High Water Elev.	595.22
Q (50) - 11,400 cfs	

NAME PLATE
(See Std. 2113-1)

STATION 282+39.33
BUILT 197 BY
STATE OF ILLINOIS
F.A.I. RT. 55 SEC. 54-5B
F.A. PROJ. I-55-4 (86)
LOADING HS 20 & A1F.

DESIGN STRESSES

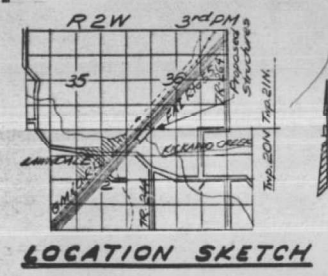
f _c	1200 psi (Deck Slab)
f _c	1400 psi (Curb, Parapet, Sub)
f _s	20000 psi (Reinf.)
f _s	20000 psi (Struct.)
W	75 psi (Figs.)
n	10
Allowable Deflection	4/1200
LOADING	HS 20-44 & A1F.

GENERAL NOTES

- All reinforcement shall be lapped 24 diameter unless otherwise shown.
- Fasteners shall be high strength bolts. Bolts 3/4", open holes 1 1/8", unless otherwise noted.
- Calculated weight of structural steel = 956,290 lbs.
- The Basic Lead Silico Chromate paint system shall be used for shop and field painting of structural steel.
- Field welding of construction accessories will not be permitted to the bottom flange of beams or girders nor to the top flange for a distance equal to one-fourth the span length each way from the pier supports. Field welding in other areas will be permitted only when approved by the Engineer.
- Anchor bolts shall be set before bolting cross frames over supports.
- Slope wall shall be reinforced with welded wire fabric 6"x6" mesh, weighing 58 lb. per 100 sq. ft.
- The Contractor shall drive one concrete test pile in a permanent location at the S. Abut. So. Bd. lanes and two creosoted piles in permanent locations at Pier 1 No. Bd. lane and Pier 2 So. Bd. lanes.
- The embankment configuration shown shall be the minimum embankment that must be constructed prior to construction of the abutments.
- The concrete rail section above the mandatory construction joint at the top of the slab shall be constructed of Class X Concrete, except the aggregates shall conform to the requirements of Handrail Concrete.
- Protective Coat shall not be applied to surfaces to which Coal Tar Interlayer Protective Coat is applied.
- Layout of slope walls may be varied in the field to suit ground conditions as directed by the Engineer.

TOTAL BILL OF MATERIAL

Item	Unit	Super	Sub	Total
Bit Concrete Surface Course Class I	Ton	226		226
Removal of Existing Structure	Ea.		1	1
Structure Excavation	Cu. Yds.		1168	1168
Neoprene Expansion Joint (4')	Lin. Ft.	88		88
Coal Tar Interlayer Protective Coat	Sq. Yds.	2,701		2,701
Class A Concrete	Cu. Yds.		422.4	422.4
Class X Concrete	Cu. Yds.	805.8	208.3	1014.2
Stud Shear Connectors	Ea.	6,300		6,300
Aluminum Railing	Lin. Ft.	1,252		1,252
Creosoted Piles (Up to 20')	Lin. Ft.		456	456
Untreated Piles (Up to 30')	Lin. Ft.		3,604	3,604
Test Piles (Timber)	Ea.		2	2
Concrete Piles	Lin. Ft.		2079	2079
Test Piles (Concrete)	Ea.		1	1
Name Plates	Ea.		2	2
Slope Wall (6')	Sq. Yds.		1620	1620
Preformed Joint Sealer (2')	Lin. Ft.	91		91
Protective Coat	Sq. Yd.		511	511
Reinforcement Bars	Lbs.	187,790	43,120	230,910
Structural Steel	L.S.			1



GENERAL PLAN & ELEVATION
PROJ. I-55-4 (86) 133
F.A.I. RT. 55 OVER KICKAPOO CREEK
LOGAN COUNTY
STATION 282+39.33

REPLACES 054-0001 NB

#13 5-1-73

6-86

MODEL: Default
FILE NAME: c:\pwworking\brandon.dudley\myd1020514\00_D672648 File Creation Template.dgn

USER NAME	DESIGNED	REVISED
brandon.dudley	-	-
	DRAWN	REVISED
	-	-
	CHECKED	REVISED
	-	-
PLOT DATE	DATE	REVISED
7/9/2024	-	-

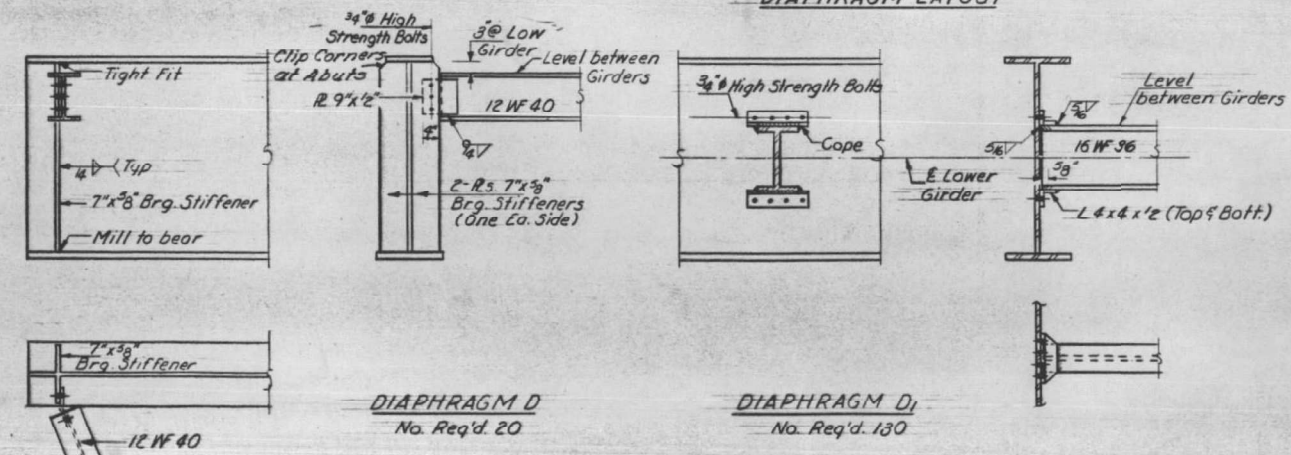
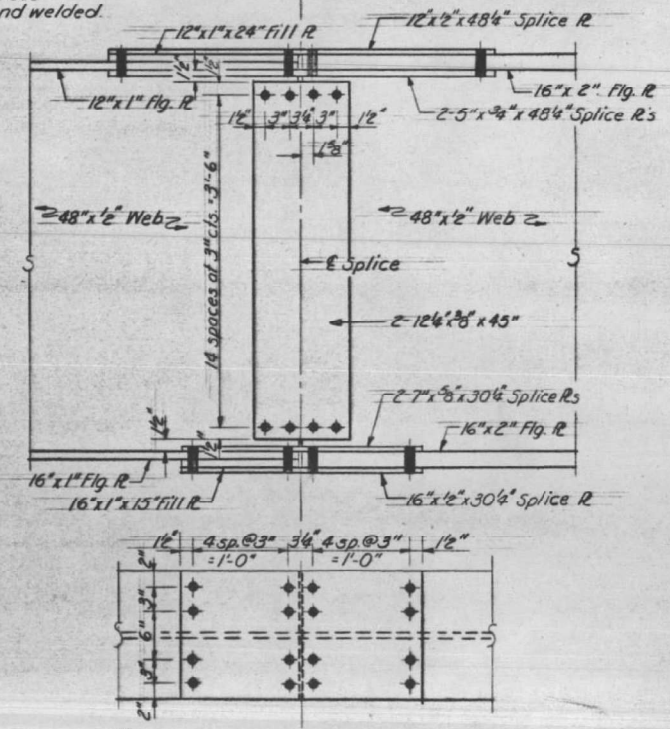
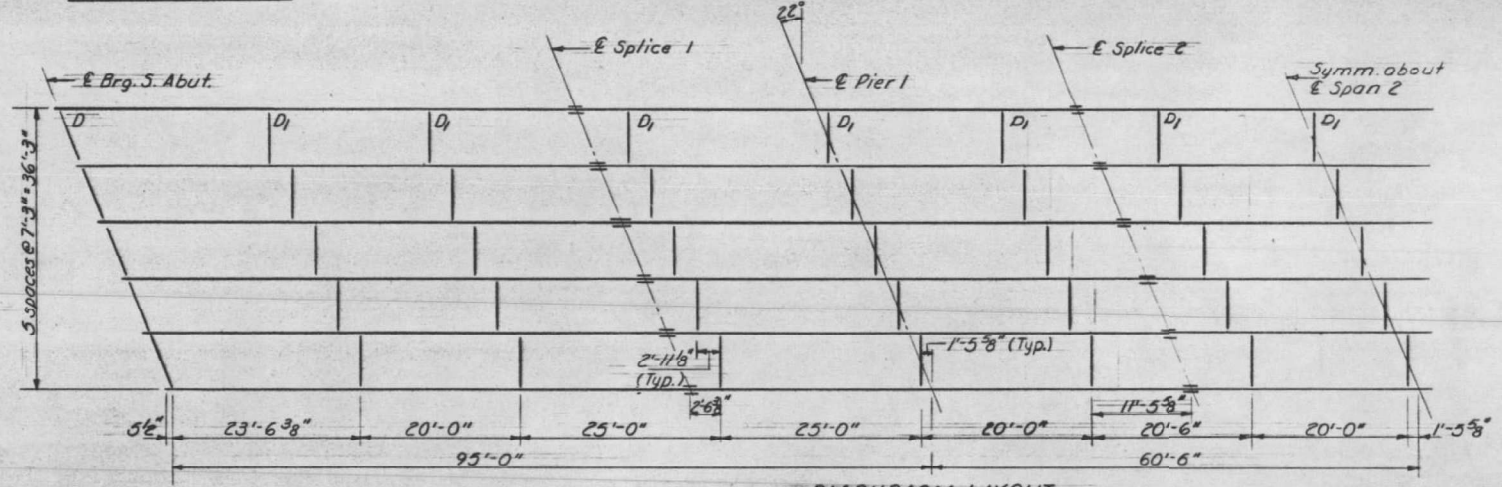
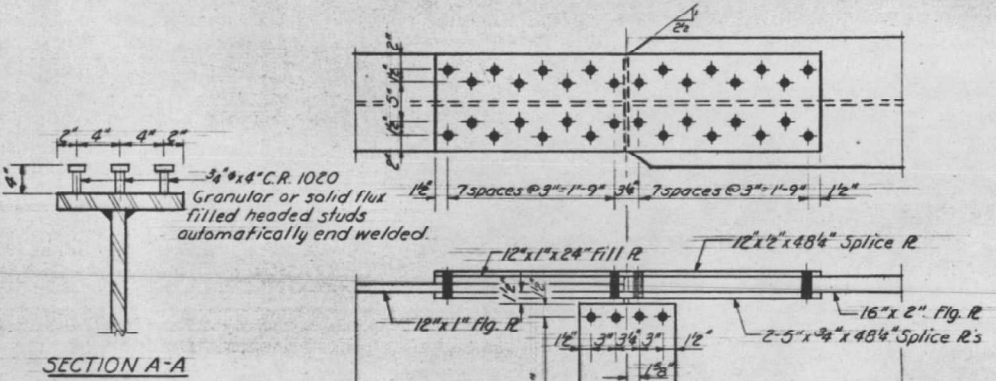
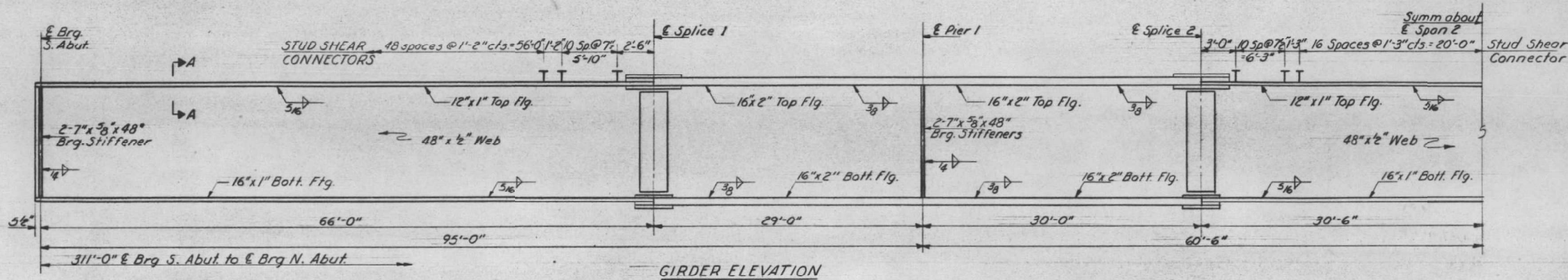
STATE OF ILLINOIS
DEPARTMENT OF TRANSPORTATION

EXISTING BRIDGE PLANS - SN 054-0063 & 0064
(FOR INFORMATION ONLY)

SCALE: SHEET OF SHEETS STA. TO STA.

F.A.I. RTE.	SECTION	COUNTY	TOTAL SHEETS	SHEET NO.
55	(54-1HB,54-5B)BP	LOGAN	15	10
CONTRACT NO. 72648				
ILLINOIS FED. AID PROJECT				

ROUTE NO.	SECTION	COUNTY	TOTAL SHEETS	SHEET NO.	SHEET NO. 9 21 SHEETS
F.A.I. RT. 55	54-5B	Logan	116	33	
ILLINOIS		FED. AID PROJECT			



DESIGNED	Charles P. [Signature]
CHECKED	JWEU, TJAIFA
DRAWN	Bev Robinson
CHECKED	JWEU, TJAIFA

EXAMINED	_____
PASSED	_____
APPROVED	_____

STRUCTURAL STEEL
F.A.I. RT. 55 SEC. 54-5B
LOGAN COUNTY
STA 282+39.33

MODEL: Default
FILE NAME: c:\pwworkspace\duddley\myd1020514100 D672648 File Creation Template.dgn

USER NAME = brandon.dudley	DESIGNED -	REVISED -
	DRAWN -	REVISED -
	CHECKED -	REVISED -
PLOT DATE = 7/9/2024	DATE -	REVISED -

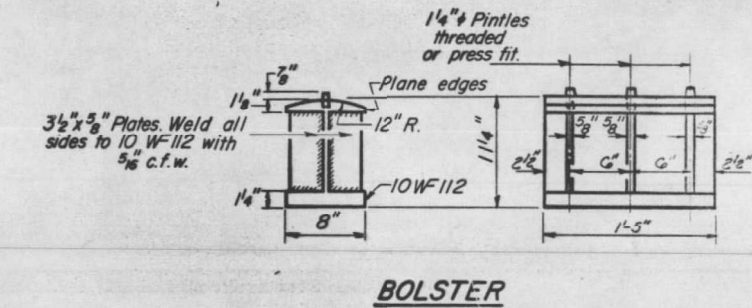
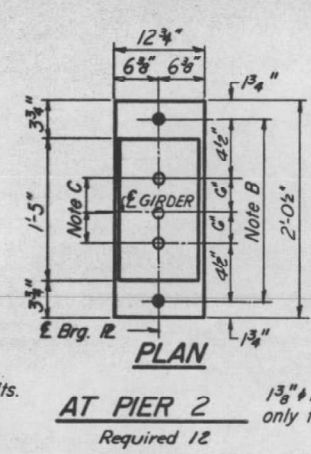
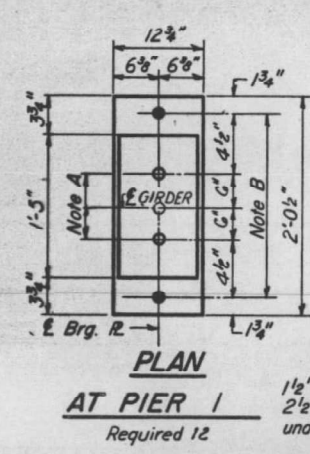
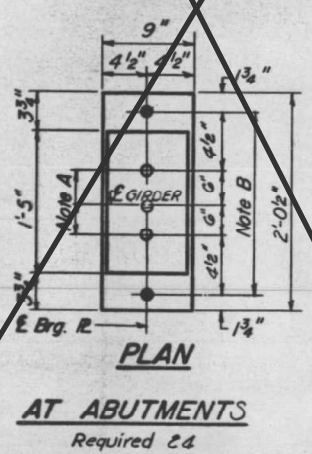
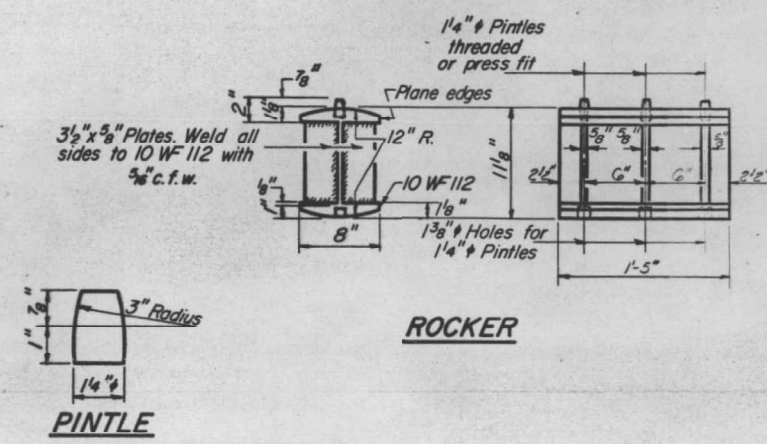
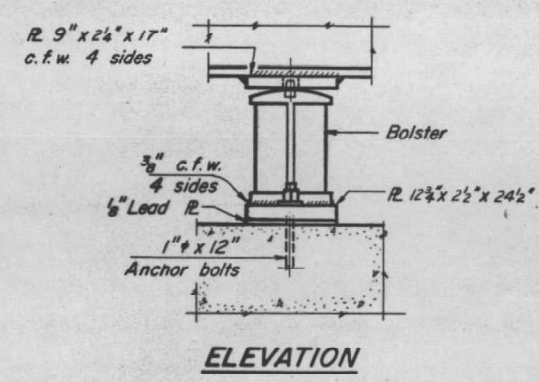
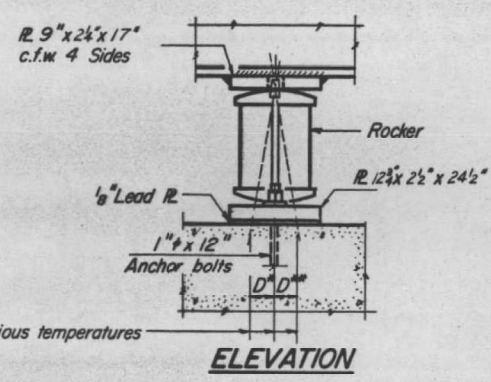
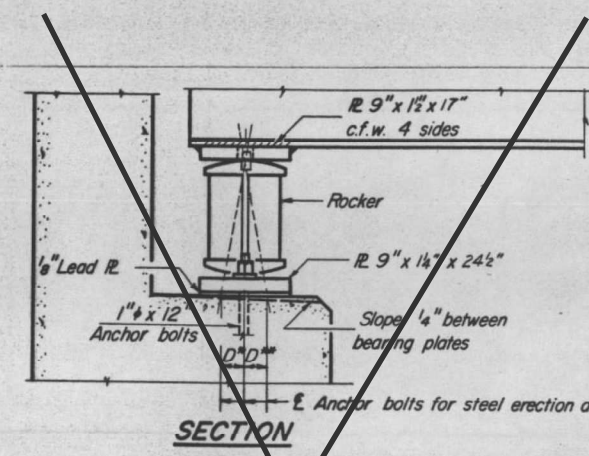
STATE OF ILLINOIS
DEPARTMENT OF TRANSPORTATION

EXISTING BRIDGE PLANS - SN 054-0063 & 0064
(FOR INFORMATION ONLY)

SCALE: SHEET OF SHEETS STA. TO STA.

F.A.I. RTE.	SECTION	COUNTY	TOTAL SHEETS	SHEET NO.
55	(54-1HB, 54-5B)BP	LOGAN	15	11
CONTRACT NO. 72648				
ILLINOIS		FED. AID PROJECT		

ROUTE NO.	SECTION	COUNTY	TOTAL SHEETS	SHEET NO.	SHEET NO. 8
55	54-5B	Logan	116	32	21 SHEETS



NOTES ON SETTING OF ANCHOR BOLTS AT EXP. BRGS.

- a) D^* (Side of brg. away from fixed brg.)
 $D^* = \frac{1}{8}$ " per each 100' of expansion for every 15° fall below the normal temp. of 50°F
- D^{**} (Side of brg. toward fixed brg.)
 $D^{**} = \frac{1}{8}$ " per each 100' of expansion for every 15° rise above the normal temp. of 50°F
- b) After beams have been erected and dimensions D^* or D^{**} determined, holes shall be drilled and anchor bolts shall be grouted in place. All fixed anchor bolts may be built into the masonry.

BEARING ASSEMBLY DETAILS

	A Sp. 1 or 3	Pier 1 or 2	O.S. Sp. 2
I_g (in ⁴)	21233	44629	21233
I_c (in ⁴)	48696		48696
S_g (in ³)	919	1717	919
S_c (in ³)	1212		1212
Q (in ²)	.893	1.040	.893
M_a (KI)	485.5	1925.7	442.1
S_Q (in ²)	.452	.452	.452
M_b (KI)	278.4	527.7	299.6
M_c (KI)	776.0	777.6	806.3
M_{max} (KI)	176.2	167.1	163.7
M_{min} (KI)	176.1	2798.1	1711.6
f_b (KSI)	18.5	19.6	18.3

NORTH BOUND LANES						
	G-1	G-2	G-3	G-4	G-5	G-6
#Brg. Sp. Abut	603.22	603.36	603.47	603.41	603.30	603.18
#Splice 1	603.18	603.31	603.42	603.36	603.25	603.10
Pier 1	603.18	603.31	603.42	603.36	603.24	603.09
#Splice 2	603.18	603.31	603.42	603.36	603.24	603.09
#Splice 3	603.14	603.27	603.34	603.32	603.20	603.04
Pier 2	603.10	603.23	603.34	603.28	603.16	603.00
#Splice 4	603.07	603.20	603.31	603.24	603.16	603.04
#Brg. No. Abut	603.03	603.16	603.27	603.20	603.08	602.92
SOUTH BOUND LANES						
	G-1	G-2	G-3	G-4	G-5	G-6
#Brg. Sp. Abut	603.18	603.31	603.42	603.36	603.24	603.08
#Splice 1	603.16	603.29	603.41	603.34	603.22	603.07
Pier 1	603.17	603.30	603.42	603.35	603.23	603.08
#Splice 2	603.16	603.31	603.43	603.36	603.25	603.10
#Splice 3	603.16	603.30	603.41	603.34	603.24	603.09
Pier 2	603.14	603.27	603.39	603.33	603.21	603.02
#Splice 4	603.11	603.25	603.37	603.31	603.19	603.04
#Brg. No. Abut	603.10	603.24	603.36	603.30	603.19	603.04

	ABUTS	PIERS
R_g #34	46.5	171.3
R_c	34.1	58.3
Imp	7.7	12.6
R TOTAL	88.3	242.2

DESIGNED: *Charles P. Jones*
 CHECKED: *Shen, T.J., A.I.F.A.*
 DRAWN: *P.G. Barnett*
 CHECKED: *Shen, T.J., A.I.F.A.*

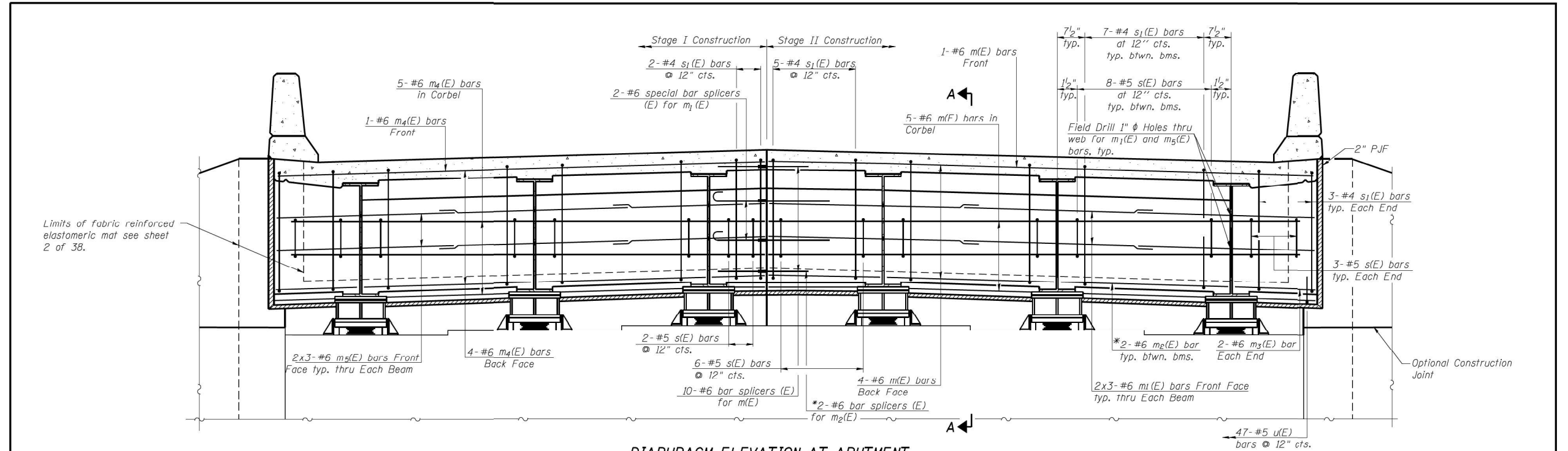
EXAMINED: _____
 PASSED: _____
 APPROVED: _____

I-2-B 9-1-65

*For fabrication only and lower all Elevations .04"

BEARING DETAILS
 KALRT. 55 SEC. 54-5B
 LOGAN COUNTY
 STATION 282+39.53

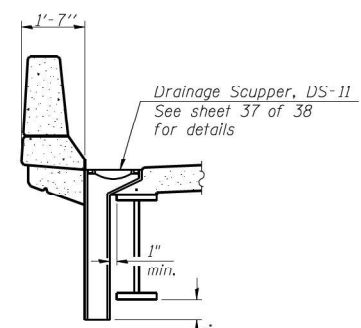
MODEL: Default
 FILE NAME: c:\pwworkspace\old\duffy\mvd1020514\00_D672648 File Creation_Template.dwg



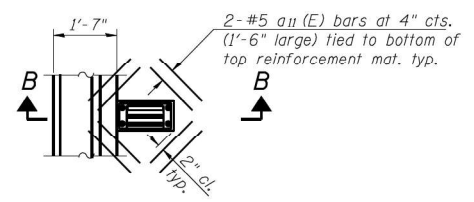
DIAPHRAGM ELEVATION AT ABUTMENT

(Looking South at South Abutment S.B. Lanes North Abut. Similar)
 (Looking North at North Abutment N.B. Lanes South Abut. Similar)

- * Cut to fit at Stage line.
- ** Cost included with Concrete Superstructure.
- *** Prior to Grinding.

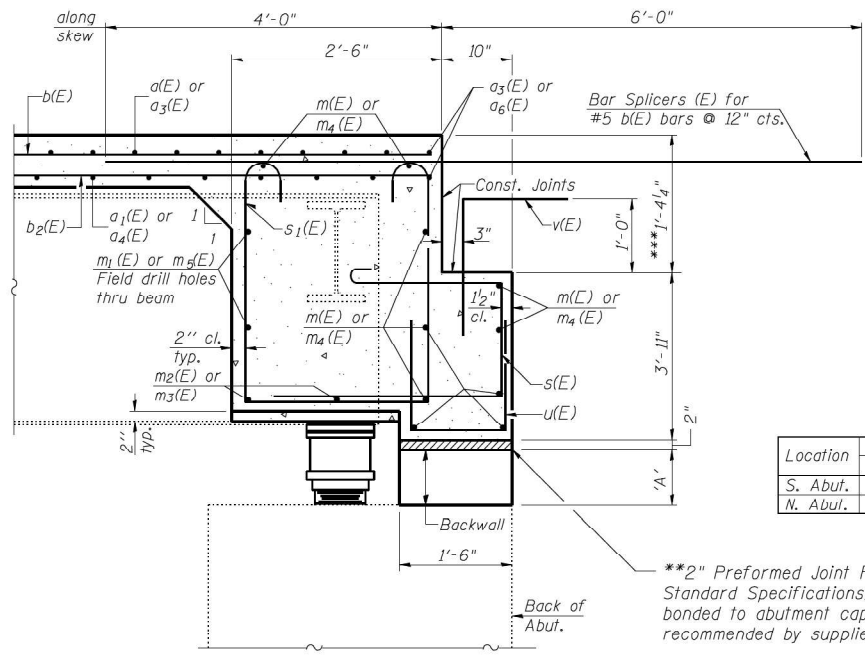


SECTION B-B



PLAN AT SCUPPER

Note:
 Cut longitudinal reinforcement to clear drainage scuppers.



SECTION A-A

Dimensions at right angles to abutment, except as shown.

DIMENSION 'A'

Location	South Bound		North Bound	
	East End	West End	East End	West End
S. Abut.	8 7/8"	8 3/4"	9"	8 1/2"
N. Abut.	9"	9 1/4"	9 1/2"	8 7/8"

Notes:
 Reinforcement bars in diaphragm are billed with superstructure on sheet 18 of 38.
 Concrete in diaphragm is included with Concrete Superstructure on sheet 18 of 38.
 Concrete in backwall is included with Concrete Structures on sheet 30 and 31 of 38.
 For details of bars s(E), s1(E), v(E) & u(E), see sheet 18 of 38.
 The s(E) and s1(E) bars shall be placed parallel to the beams. Spacing for these bars shall be at right angles to the beams.
 The cost of field drilling holes in webs for m1(E) & m5(E) is included in the cost of Reinforcement Bars (Fpoxxy Coated).

MIN. BAR LAP
 #6 bar = 3'-4" (Diaphragm)

***2" Preformed Joint Filler (per article 1051.09 of the Standard Specifications) full width and vertically at edges bonded to abutment cap with suitable adhesive as recommended by supplier.

FILE NAME = ...0540063-0064-72e11-019-diaphragm-deta	USER NAME = .jmpl.	DESIGNED - RKM	REVISIONS -
...la.dgn		CHECKED - MCB	REVISIONS -
PLOT SCALE = 0:2.000000 '1' / 1N.		DRAWN - CFC	REVISIONS -
PLOT DATE = 3/18/2013		CHECKED - RKM	REVISIONS -

STATE OF ILLINOIS
DEPARTMENT OF TRANSPORTATION

DIAPHRAGM DETAILS
STRUCTURE NO. 054-0063 (N.B.) & 054-0064 (S.B.)
 SHEET NO. 19 OF 38 SHEETS

CB Coombe-Bloxdorf P.C.
 - CIVIL ENGINEERS -
 - STRUCTURAL ENGINEERS -
 - LAND SURVEYORS -
 Design Firm License No. 184-002703

F.A.I. RTE.	SECTION	COUNTY	TOTAL SHEETS	SHEET NO.
55	(54-1HB,54-5B)BP	LOGAN	429	304
			CONTRACT NO. 72E11	
ILLINOIS FED. AID PROJECT				

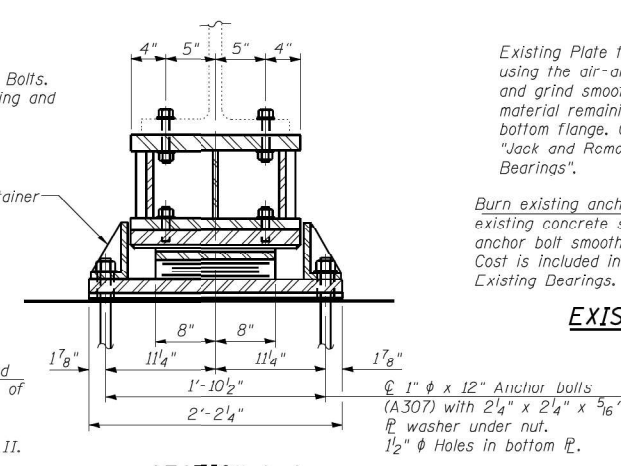
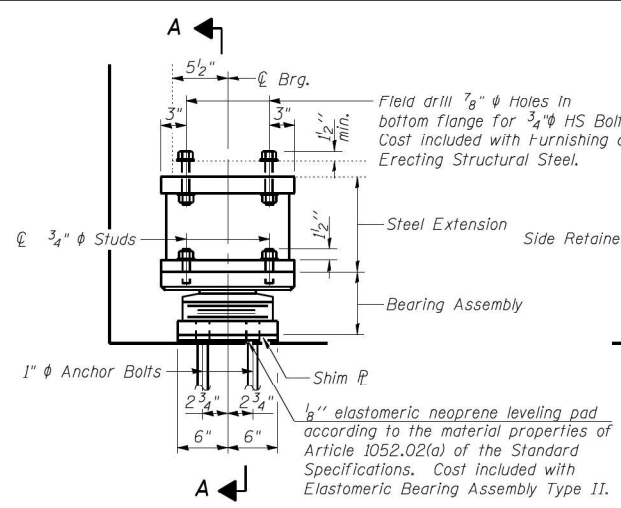
MODEL: Default
 FILE NAME: c:\pwworking\cbloxd\dwg\1020514\00_D672648_File Creation_Template.dgn

USER NAME = brandon.dudley	DESIGNED -	REVISIONS -
	DRAWN -	REVISIONS -
	CHECKED -	REVISIONS -
PLOT DATE = 7/9/2024	DATE -	REVISIONS -

STATE OF ILLINOIS
DEPARTMENT OF TRANSPORTATION

EXISTING BRIDGE PLANS - SN 054-0063 & 0064
(FOR INFORMATION ONLY)
 SCALE: SHEET OF SHEETS STA. TO STA.

F.A.I. RTE.	SECTION	COUNTY	TOTAL SHEETS	SHEET NO.
55	(54-1HB,54-5B)BP	LOGAN	15	13
CONTRACT NO. 72648				
ILLINOIS FED. AID PROJECT				



EXISTING BEARING REMOVAL DETAIL
At South Abutment

PROCEDURE FOR JACKING AND REMOVING EXISTING BEARINGS
(At Abutments)

1. The Contractor shall submit, for approval by the Engineer, plans for jacking and removing the existing bearings at the abutments prior to commencing any work at the abutment bearings.
2. In each stage, jacking and removal of existing bearings shall be done after the existing deck is removed and before new deck is poured.
3. The minimum jack capacity is 9 ton per girder.
4. The new bearings and steel extensions shall be in place and the jacks lowered prior to pouring the new concrete deck in each stage. See Special Provision for Jack and Remove Existing Bearings.

Notes:

Anchor bolts shall be ASTM F1554 all-thread (or an Engineer-approved alternate material) of the grade(s) and diameter(s) specified. The corresponding specified grade of AASHTO M314 anchor bolts may be used in lieu of ASTM F1554.

Anchor bolts for Type II bearings shall be placed in holes drilled in the concrete through holes in the bottom bearing plate after members are in place. Side retainers shall be placed after bolts are installed.

Drilled and set anchor bolts shall be installed according to Article 52.06 of the Standard Specifications.

Side retainers and other steel members required for the elastomeric bearing assembly shall be included in the cost of Elastomeric Bearing Assembly, Type II.

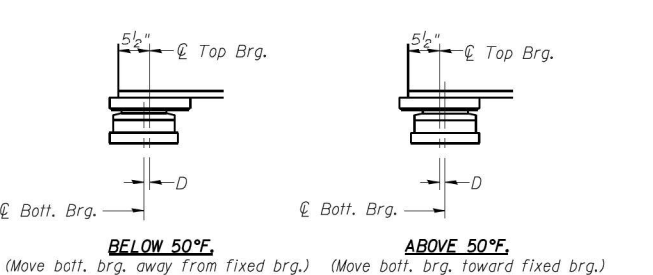
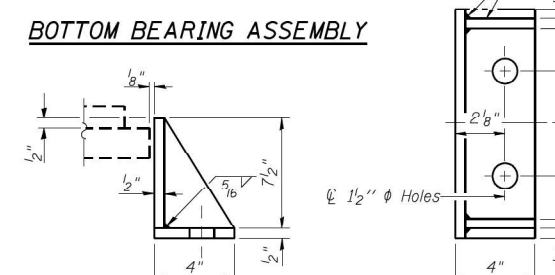
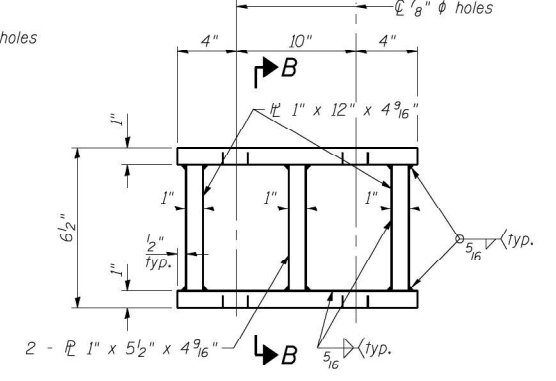
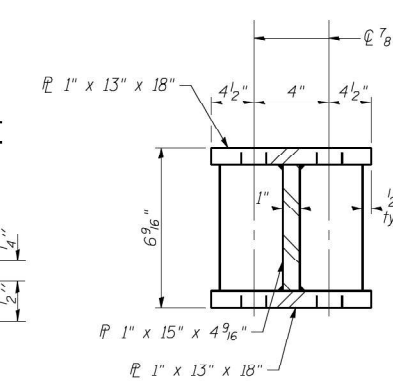
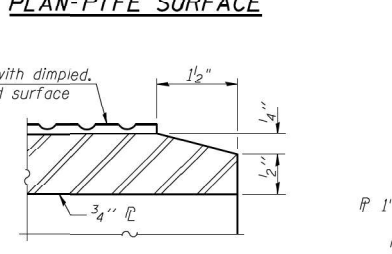
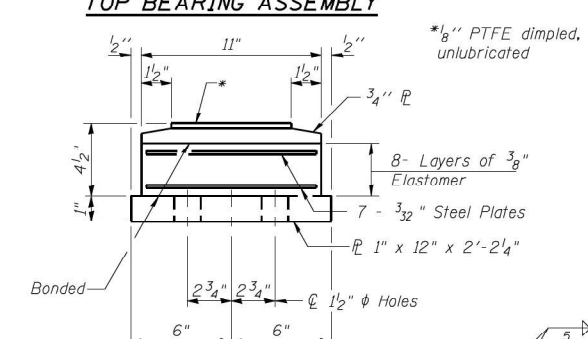
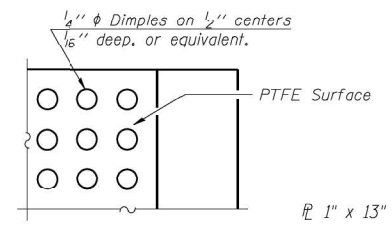
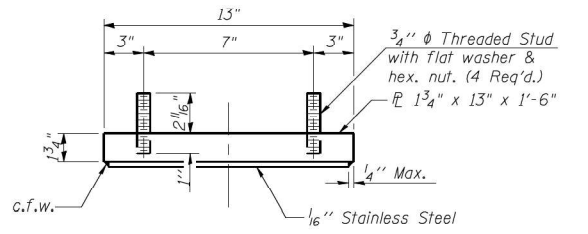
The $\frac{1}{8}$ " PTFE sheet shall be bonded directly to the top steel plate with a two-component, medium viscosity epoxy resin, conforming to the requirements of the Federal Specification MMM-A-134, Type I. The bond agent shall be applied on the full area of the contact surfaces.

Bonding of $\frac{1}{8}$ " PTFE sheet during vulcanizing process will be permitted provided the process and method of adjusting assembly height is approved by the Engineer.

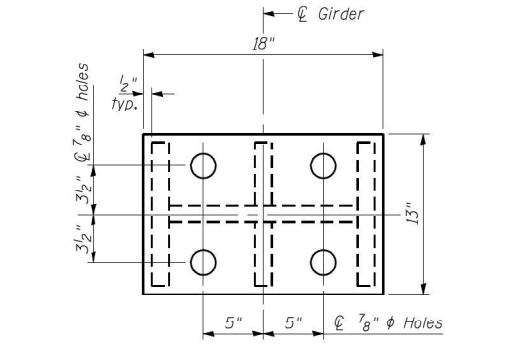
Prior to ordering any material for extensions, the Contractor shall verify in the field all bearing height dimensions.

Two $\frac{1}{8}$ in. adjusting shims shall be provided for each bearing in addition to all other plates or shims and placed as shown on bearing details.

TYPE II ELASTOMERIC EXP. BRG.



ELEVATION FABRICATED STEEL EXTENSION



BILL OF MATERIAL

Item	Unit	Total
Elastomeric Bearing Assembly Type II	Each	12
Anchor Bolts, 1"	Each	48
***Furnishing and Erecting Structural Steel Jack and Remove Existing Bearings	Pound	2562
***Fabricated Steel Extensions	Each	12

Coombe-Bloxdorf P.C.
- CIVIL ENGINEERS -
- STRUCTURAL ENGINEERS -
- LAND SURVEYORS -
Design Firm License No. 184-002703

FILE NAME =	USER NAME = JMH	DESIGNED - RKM	REVISED -
... \0540063-0064-72e11-023-bearing-detail	rs-abutLdgn	CHECKED - MCB	REVISED -
CB PROJECT NO. 10007-3	PLOT SCALE = 0.2:000000 ft / in.	DRAWN - CFC	REVISED -
	PLOT DATE = 3/18/2013	CHECKED - RKM	REVISED -

STATE OF ILLINOIS
DEPARTMENT OF TRANSPORTATION

BEARING DETAILS SOUTH ABUTMENT
STRUCTURE NO. 054-0063 (N.B.) & 054-0064 (S.B.)

F.A.I. RTE.	SECTION	COUNTY	TOTAL SHEETS	SHEET NO.
55	D6 LOGAN CO BR 2011-1	LOGAN	429	308
				CONTRACT NO. 72E11
ILLINOIS FED. AID PROJECT				

MODEL: Default
FILE NAME: c:\pwworkspace\duddley\mydwg\1020514\00 D672648 File Creation Template.dgn

USER NAME = brandon.dudley	DESIGNED -	REVISED -
	DRAWN -	REVISED -
	CHECKED -	REVISED -
PLOT DATE = 7/9/2024	DATE -	REVISED -

STATE OF ILLINOIS
DEPARTMENT OF TRANSPORTATION

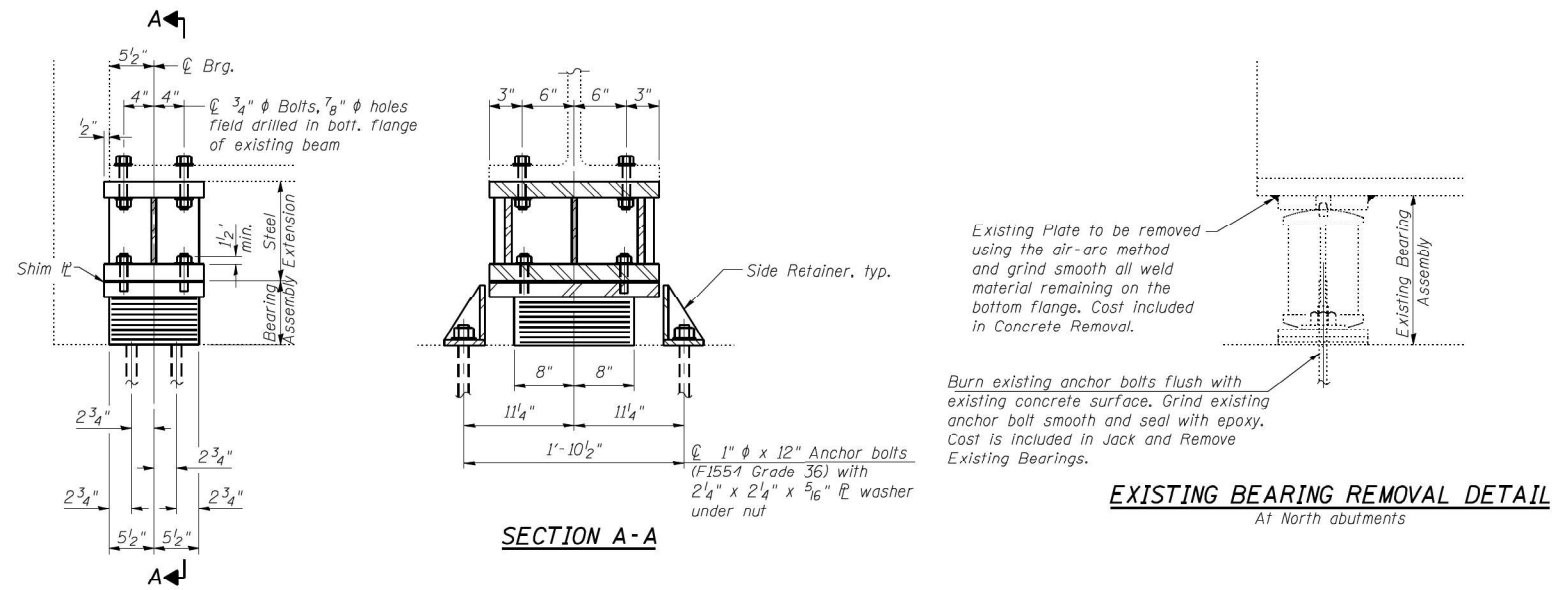
EXISTING BRIDGE PLANS - SN 054-0063 & 0064
(FOR INFORMATION ONLY)

F.A.I. RTE.	SECTION	COUNTY	TOTAL SHEETS	SHEET NO.
55	(54-1HB,54-5B)BP	LOGAN	15	14
				CONTRACT NO. 72648
ILLINOIS FED. AID PROJECT				

PROCEDURE FOR JACKING AND REMOVING EXISTING BEARINGS

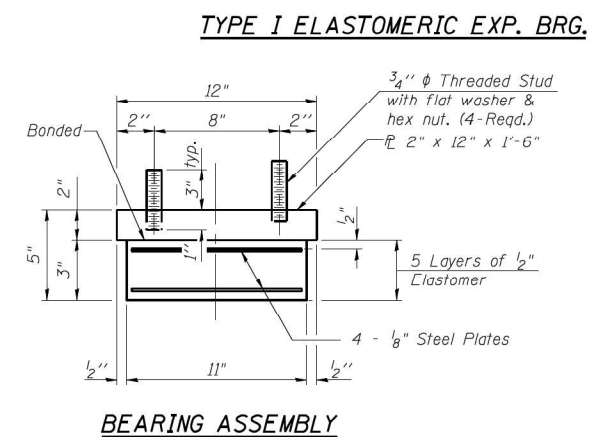
(At Abutments)

1. The Contractor shall submit, for approval by the Engineer, plans for jacking and removing the existing bearings at the abutments prior to commencing any work at the abutment bearings.
2. In each stage, jacking and removal of existing bearings shall be done after the existing deck is removed and before new deck is poured.
3. The minimum jack capacity is 9 ton per girder.
4. The new bearings and steel extensions shall be in place and the jacks lowered prior to pouring the new concrete deck in each stage. See Special Provision for Jack and Remove Existing Bearings.



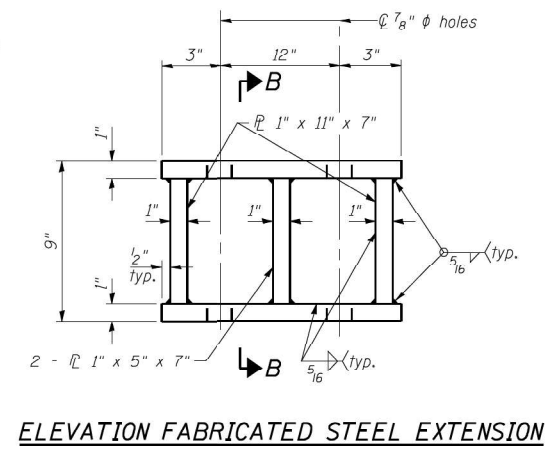
ELEVATION AT N. ABUT.

EXISTING BEARING REMOVAL DETAIL
At North abutments

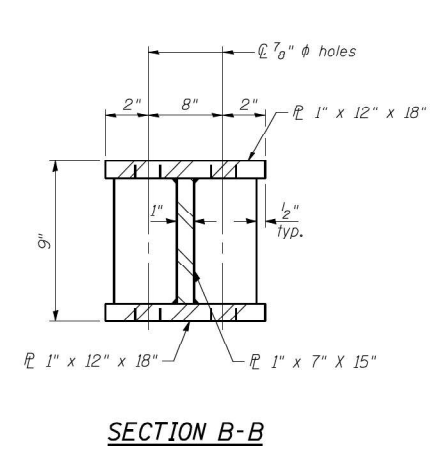


BEARING ASSEMBLY

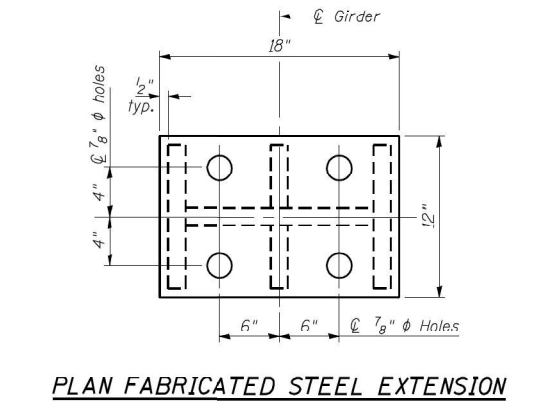
Note:
Shim plates shall not be placed under Bearing Assembly.



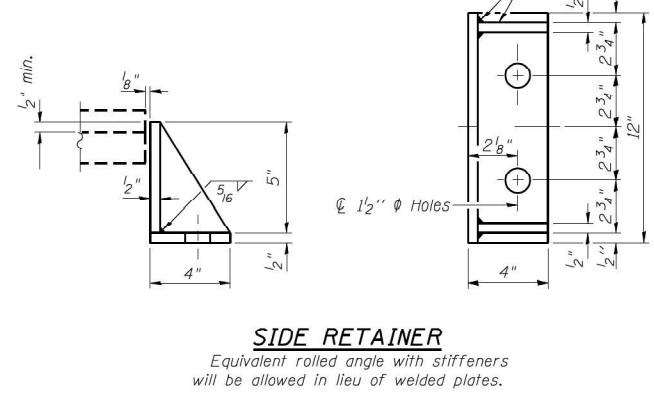
ELEVATION FABRICATED STEEL EXTENSION



SECTION B-B



PLAN FABRICATED STEEL EXTENSION



SIDE RETAINER
Equivalent rolled angle with stiffeners will be allowed in lieu of welded plates.

Notes:
Anchor bolts shall be ASTM F1554 all-thread (or an Engineer-approved alternate material) of the grade(s) and diameter(s) specified. The corresponding specified grade of AASHTO M314 anchor bolts may be used in lieu of ASTM F1554.
Anchor bolts for side retainers shall be installed in holes drilled in the concrete.
Drilled and set anchor bolts shall be installed according to Article 521.06 of the Standard Specifications.
Side retainers and other steel members required for the bearing assembly shall be included in the cost of Elastomeric Bearing Assembly, Type I.
Prior to ordering any material, the Contractor shall verify in the field all bearing height and shim thickness dimensions. Cost included in Elastomeric Bearing Assembly Type I.
The cost of field drilling holes in bottom flange of existing beams is included in Elastomeric Bearing Assembly Type I.
Two 1/8 in. adjusting shims shall be provided for each bearing in addition to all other plates or shims and placed as shown on bearing details.

BILL OF MATERIAL

Item	Unit	Total
Elastomeric Bearing Assembly Type I	Each	12
Anchor Bolts, 1"	Each	48
Furnishing and Erecting Structural Steel	Pound	2786
Jack and Remove Existing Bearings	Each	12

***Fabricated Steel Extensions

I-2E-1

FILE NAME =	USER NAME = .MML.	DESIGNED - RKM	REVISED -
...MS40063-0064-001-02051400 D672648 File Creation Template.dgn	...n-abut.dgn	CHECKED - MCB	REVISED -
	PLOT SCALE = 0:2.0000000 1" = 12"	DRAWN - CFC	REVISED -
CB PROJECT NO. 10007-3	PLOT DATE = 3/18/2013	CHECKED - RKM	REVISED -

STATE OF ILLINOIS
DEPARTMENT OF TRANSPORTATION

BEARING DETAILS NORTH ABUTMENT
STRUCTURE NO. 054-0063 (N.B.) & 054-0064 (S.B.)
SHEET NO. 24 OF 38 SHEETS

Coombe-Bloxdorf P.C.
- CIVIL ENGINEERS -
- STRUCTURAL ENGINEERS -
- LAND SURVEYORS -
Design Firm License No. 184-002703

F.A.I. RTE.	SECTION	COUNTY	TOTAL SHEETS	SHEET NO.
55	D6 LOGAN CO BR 2011-1	LOGAN	429	309
				CONTRACT NO. 72E11
ILLINOIS FED. AID PROJECT				

MODEL: Default
FILE NAME: c:\pwworkspace\duddley\mvd102051400 D672648 File Creation Template.dgn

USER NAME = brandon.dudley	DESIGNED -	REVISED -
	DRAWN -	REVISED -
	CHECKED -	REVISED -
PLOT DATE = 7/9/2024	DATE -	REVISED -

STATE OF ILLINOIS
DEPARTMENT OF TRANSPORTATION

EXISTING BRIDGE PLANS - SN 054-0063 & 0064
(FOR INFORMATION ONLY)
SCALE: SHEET OF SHEETS STA. TO STA.

F.A.I. RTE.	SECTION	COUNTY	TOTAL SHEETS	SHEET NO.
55	(54-1HB,54-5B)BP	LOGAN	15	15
				CONTRACT NO. 72648
ILLINOIS FED. AID PROJECT				