

STATE OF ILLINOIS
DEPARTMENT OF TRANSPORTATION

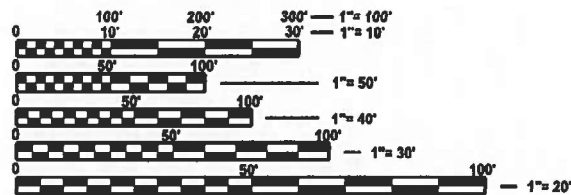
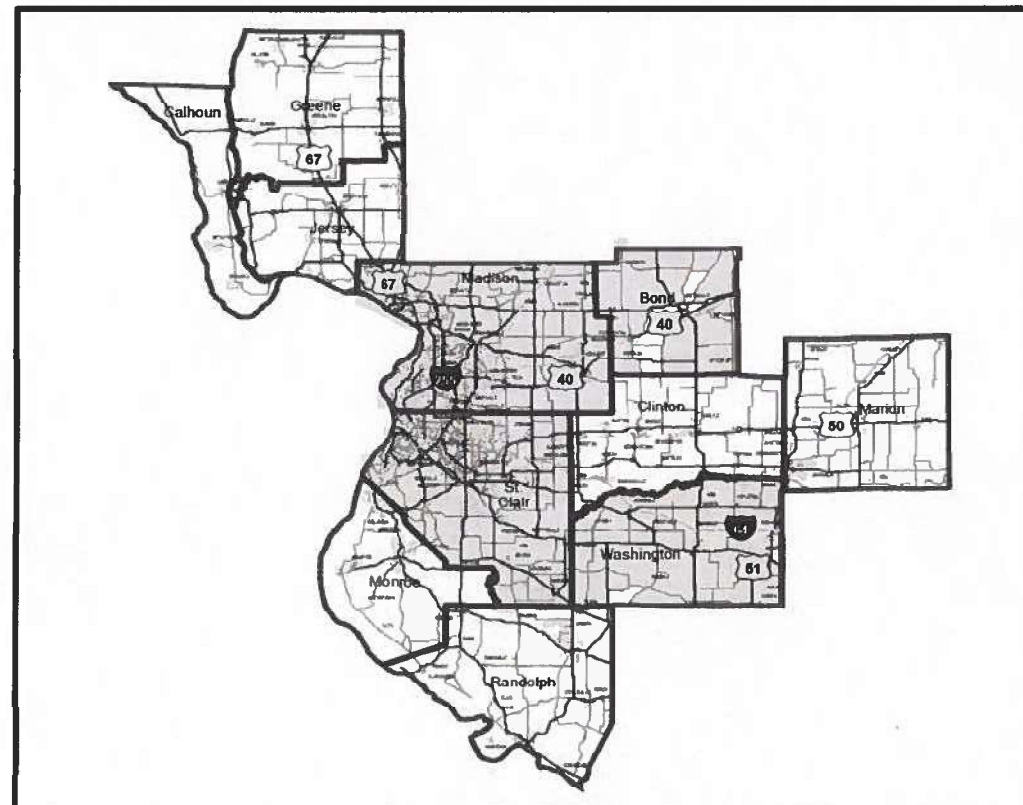
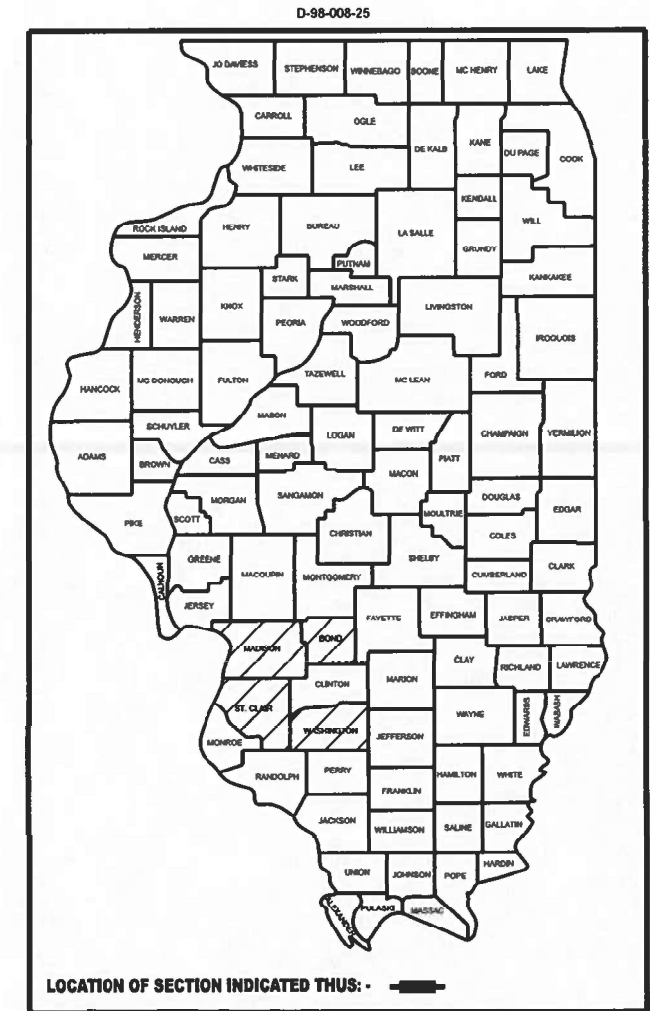
F.A. RTE.	SECTION	COUNTY	TOTAL SHEETS	SHEET NO.
VAR	DIST 8 BRIDGE DECK REPAIRS 2025-1	VARIOUS	7	1
		ILLINOIS	CONTRACT NO. 76R77	

FOR INDEX OF SHEETS, SEE SHEET NO. 2

PROPOSED HIGHWAY PLANS

VARIOUS ROUTES
SECTION DIST 8 BRIDGE DECK REPAIRS 2025-1
BRIDGE DECK REPAIRS
VARIOUS COUNTIES

C-98-041-25



FULL SIZE PLANS HAVE BEEN PREPARED USING STANDARD ENGINEERING SCALES. REDUCED SIZED PLANS WILL NOT CONFORM TO STANDARD SCALES. IN MAKING MEASUREMENTS ON REDUCED PLANS, THE ABOVE SCALES MAY BE USED.

J.U.L.I.E.
JOINT UTILITY LOCATION INFORMATION FOR EXCAVATION
1-800-892-0123
OR 811

PROJECT ENGINEER: CHERYL KEPLAR
PROJECT MANAGER: TONI MANN

CONTRACT NO. 76R77

STATE OF ILLINOIS
DEPARTMENT OF TRANSPORTATION

SUBMITTED Aug 19 20 24
[Signature]
REGIONAL ENGINEER

October 4, 2024
[Signature]
ENGINEER OF DESIGN AND ENVIRONMENT

October 4, 2024
[Signature]
DIRECTOR OF HIGHWAYS PROJECT IMPLEMENTATION 13

PRINTED BY THE AUTHORITY
OF THE STATE OF ILLINOIS

INDEX OF SHEETS

1. COVER SHEET
2. INDEX OF SHEETS, HIGHWAY STANDARDS, GENERAL NOTES, AND COMMITMENTS
3. SUMMARY OF QUANTITIES
4. DECK SLAB REPAIR (PARTIAL DEPTH) SPECIAL
5. TRAFFIC CONTROL AND PROTECTION 701400 (SPECIAL)
6. TRAFFIC CONTROL AND PROTECTION 701401 (SPECIAL)
7. TRAFFIC CONTROL AND PROTECTION 701446 (SPECIAL)

HIGHWAY STANDARDS

000001-08	STANDARD SYMBOLS ABBREVIATIONS & PATTERNS
001006	DECIMAL OF INCH & FOOT
701411-09	LANE CLOSURE, MULTILANE, AT ENTRANCE OR EXIT RAMP, FOR SPEEDS ≥ 45 MPH
701428-01	TRAFFIC CONTROL SETUP AND REMOVAL FREEWAY/EXPRESSWAY
701901-09	TRAFFIC CONTROL DEVICES
420001-10	PAVEMENT JOINTS
701400-12	APPROACH TO LANE CLOSURE, FREEWAY/EXPRESSWAY
701401-13	LANE CLOSURE, FREEWAY/EXPRESSWAY
701446-11	TWO LANE CLOSURE, FREEWAY/EXPRESSWAY

I.D.O.T. CONTACT PERSONS

CRAIG POETTKER OFFICE PHONE (618) 346-3279
(OPERATIONS FIELD ENGINEER)

DAVID CASTENS OFFICE PHONE (618) 346-3174
(ACTING BRIDGE MAINTENANCE ENGINEER)

COMMITMENTS

NO COMMITMENTS

GENERAL NOTES

1. THE INTENT OF THIS CONTRACT IS TO ASSIST DIST. 8 OPERATIONS WITH PATCHING INTERSTATE BRIDGE DECKS THAT ARE IN NEED OF PATCHING. THIS WILL BE ACCOMPLISHED THROUGH MEANS OF THIS "CALL-OUT" CONTRACT, WHERE 1 BRIDGE LANE IS CALLED OUT FOR CALL-OUT AND THE PATCHING QTY FOR EACH CALL-OUT WILL NOT EXCEED 15 SQUARE YARDS OF DECK SLAB REPAIR (PARTIAL AND/OR FULL). THE MAX ALLOWABLE TIME FOR EACH CALL-OUT ONCE TRAFFIC CONTROL HAS BEEN SET WILL BE 60 HOURS.
2. FORM BSPE 725 IS REQUIRED. PRIOR TO START OF EACH CALL-OUT, AND IS NOTED ON THE CALL-OUT SHEET.
3. NO UTILITY CONFLICTS ANTICIPATED.
4. THE DEPARTMENT STRONGLY ENCOURAGES THE PRIME CONTRACTOR AND THEIR APPROVED SUB-CONTRACTORS TO HIRE MINORITY, WOMEN, AND DISADVANTAGED INDIVIDUALS FROM ITS FEDERALLY FUNDED HIGHWAY CONSTRUCTION CAREERS TRAINING PROGRAM (HCCTP) TO HELP MEET WORKFORCE AND TRAINEE GOALS. THIS PROGRAM IS TRAINING MINORITIES, WOMEN AND DISADVANTAGED INDIVIDUAL IN HIGHWAY CONSTRUCTION-RELATED SKILLS, E.G. MATH FOR THE TRADES, JOB READINESS, TECHNICAL SKILLS COURSEWORK (CARPENTRY, CONCRETE FLATWORK, BLUEPRINT READING, SITE PLANS, SITE WORK, TOOLS USE, ETC.) AND OSHA 10 HOUR CERTIFICATION, TO PREPARE THEM FOR A CAREER IN THE HIGHWAY CONSTRUCTION TRADES. GRADUATES ARE WELL-TRAINED AND READY TO BECOME PRODUCTIVE ENTRY-LEVEL CONSTRUCTION WORKERS, CONTACT THE DISTRICT 8 EEO OFFICE AT 618-346-3360 AND/OR THE HCCTP COORDINATOR AT 618-874-6528 TO LEARN MORE ABOUT THE PROGRAM AND FOR ASSISTANCE IN MEETING WORKFORCE AND TRAINEE GOALS.
5. THE RESIDENT ENGINEER SHALL VERIFY THE EXISTENCE OF HIGHWAY LIGHTING AND/OR I.T.S. UTILITIES WITHIN THE PROJECT LIMITS. IF HIGHWAY LIGHTING AND/OR I.T.S. EXISTS WITHIN THE PROJECT LIMITS, AND IF THESE ITEMS REQUIRE LOCATING, THE CONTRACTOR SHALL BE DIRECTED TO DO SO ACCORDING TO SECTION 803 OF THE STANDARD SPECIFICATION. THIS WORK SHALL BE PAID FOR ACCORDING TO ARTICLE 109.04 OF THE STANDARD SPECIFICATIONS.

MODEL: General Notes (Sheet)
FILE NAME: c:\pw\work\awid\john.p.green@illinois.gov\1020078\06876R77-shh-gennote.dgn

REV - MS

USER NAME = John.P.Green	DESIGNED -	REVISED -	STATE OF ILLINOIS DEPARTMENT OF TRANSPORTATION	INDEX OF SHEETS, HIGHWAY STANDARDS, GENERAL NOTES, & COMMITMENTS	F.A. RTE.	SECTION	COUNTY	TOTAL SHEETS	SHEET NO.	
	DRAWN -	REVISED -			VAR	DIST 8 BRIDGE DECK REPAIRS 2025-1	VARIOUS	7	2	
	CHECKED -	REVISED -			CONTRACT NO. 76R77					
PLOT DATE = 8/15/2024	DATE -	REVISED -			SCALE:	SHEET	OF	SHEETS	STA.	TO STA.

MODEL: SOQ SHEET (Sheet)
 FILE NAME: c:\pw\work\revise\john.p.green@illinois.gov\1020078\UD87R77-shh-SOQ.dgn

CODE NO.	ITEM	UNIT	TOTAL QUANTITY	CONSTR. CODE
				100% STATE
				BRIDGE
				0047
				URBAN
70100420	TRAFFIC CONTROL AND PROTECTION, STANDARD 701411	EACH	10	10
70100430	TRAFFIC CONTROL AND PROTECTION, STANDARD 701446 (SPECIAL)	EACH	10	10
70103815	TRAFFIC CONTROL SURVEILLANCE	CAL DA	40	40
70107025	CHANGEABLE MESSAGE SIGN	CAL DA	150	150
X7010206	TRAFFIC CONTROL AND PROTECTION, STANDARD 701401 (SPECIAL)	EACH	15	15
Z0008759	CALL OUT	EACH	25	25
Z0016001	DECK SLAB REPAIR (FULL DEPTH, TYPE I)	SQ YD	10	10
Z0016002	DECK SLAB REPAIR (FULL DEPTH, TYPE II)	SQ YD	20	20
Z0016200	DECK SLAB REPAIR (PARTIAL)	SQ YD	375	375

USER NAME = John.P.Green	DESIGNED -	REVISED -
	DRAWN -	REVISED -
	CHECKED -	REVISED -
PLOT DATE = 8/15/2024	DATE -	REVISED -

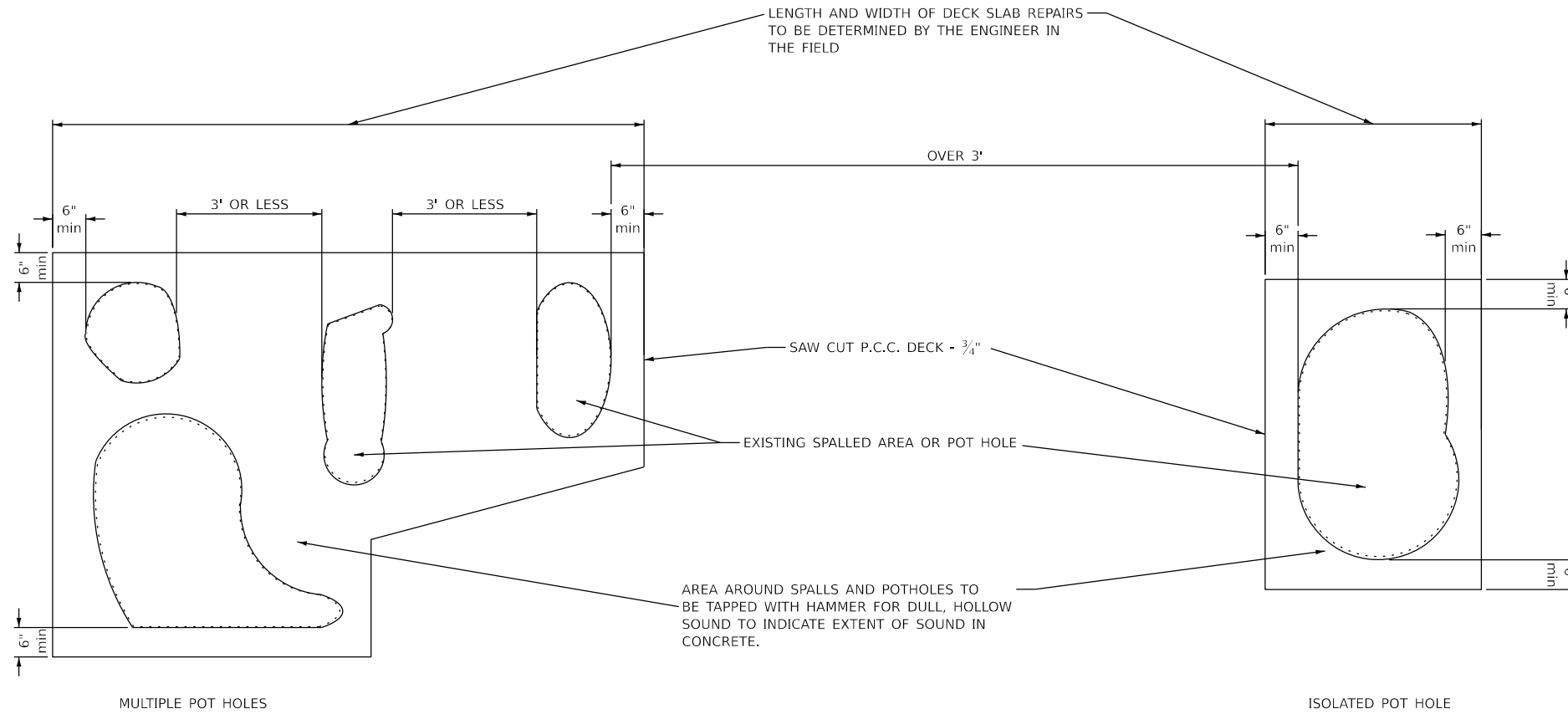
**STATE OF ILLINOIS
 DEPARTMENT OF TRANSPORTATION**

SUMMARY OF QUANTITIES

SCALE: SHEET OF SHEETS STA. TO STA.

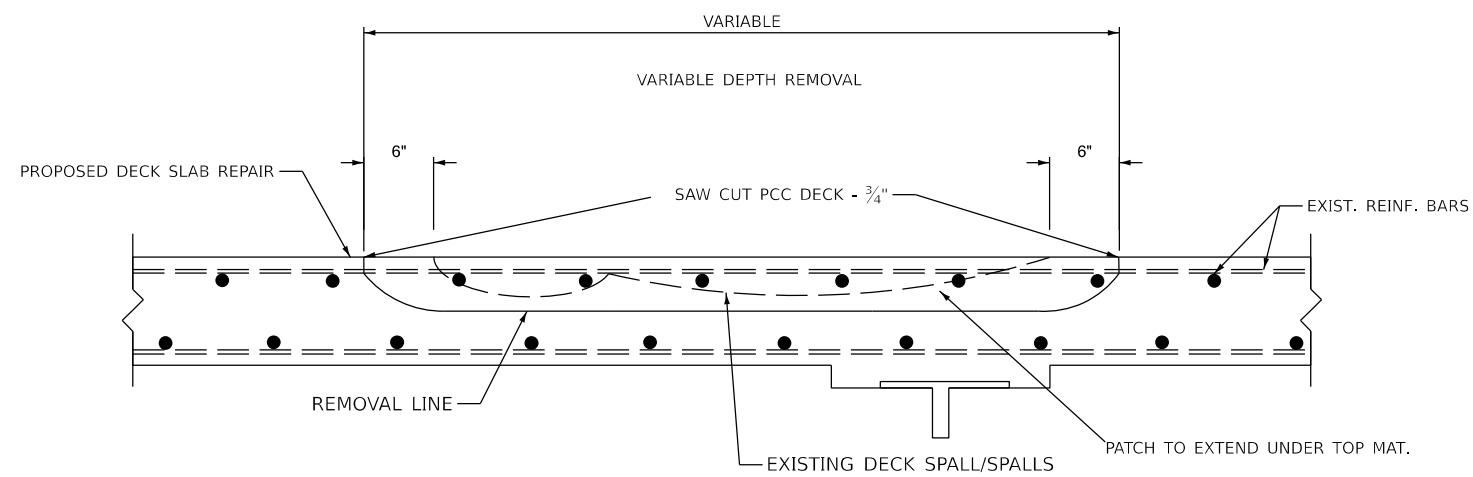
F.A. RTE.	SECTION	COUNTY	TOTAL SHEETS	SHEET NO.
VAR	DIST 8 BRIDGE DECK REPAIR 2025-1	VARIOUS	7	3
			CONTRACT NO. 76R77	
		ILLINOIS	FED. AID PROJECT	

PLAN VIEW (BRIDGE DECK)



NOTES

- ALL EXISTING REINFORCEMENT BARS SHALL REMAIN IN PLACE.
- PARTIAL DEPTH PATCHING WILL BE PAID FOR AT THE CONTRACT UNIT PRICES PER SQUARE YARD FOR DECK SLAB REPAIR (PARTIAL DEPTH) SPECIAL.
- IN ORDER TO PREVENT FRACTURE OF THE DECK, ALL HAND AND MECHANICAL TOOLS USED FOR REACHING THE SURFACE CONCRETE FROM THE BRIDGE, SHALL BE LIMITED TO 65 POUNDS UNLESS OTHERWISE APPROVED BY THE ENGINEER.
- IN THE EVENT DETERIORATED CONCRETE EXTENDS BEYOND THE MAXIMUM $3\frac{1}{2}$ INCH DEPTH, AS SPECIFIED FOR PARTIAL DEPTH PATCHES, THE CONCRETE SHALL BE REMOVED FOR THE FULL DEPTH OF THE DECK AND SHALL BE REPLACED IN THE SAME MANNER AS DESCRIBED FOR PARTIAL DEPTH PATCHING. THIS WORK WILL BE MEASURED IN SQUARE YARDS AND WILL BE PAID FOR AS CONCRETE DECK PATCHING, (FULL DEPTH) WHICH SHALL INCLUDE ANY PROTECTIVE SHIELD REQUIRED OVER PEDESTRIAN, VEHICULAR OR NAVIGATIONAL TRAFFIC. THIS WORK SHALL NOT BE PERFORMED ON CONCRETE SLAB BRIDGES AND BRIDGES WITH PRECAST CONCRETE STAY IN PLACE FORMS.



X-SECTION

MODEL: Unlitled-1 [Sheet]
FILE NAME: c:\p\work\awstol\john.p.green@illinois.gov\1020078\0676R77-shh-details.dgn

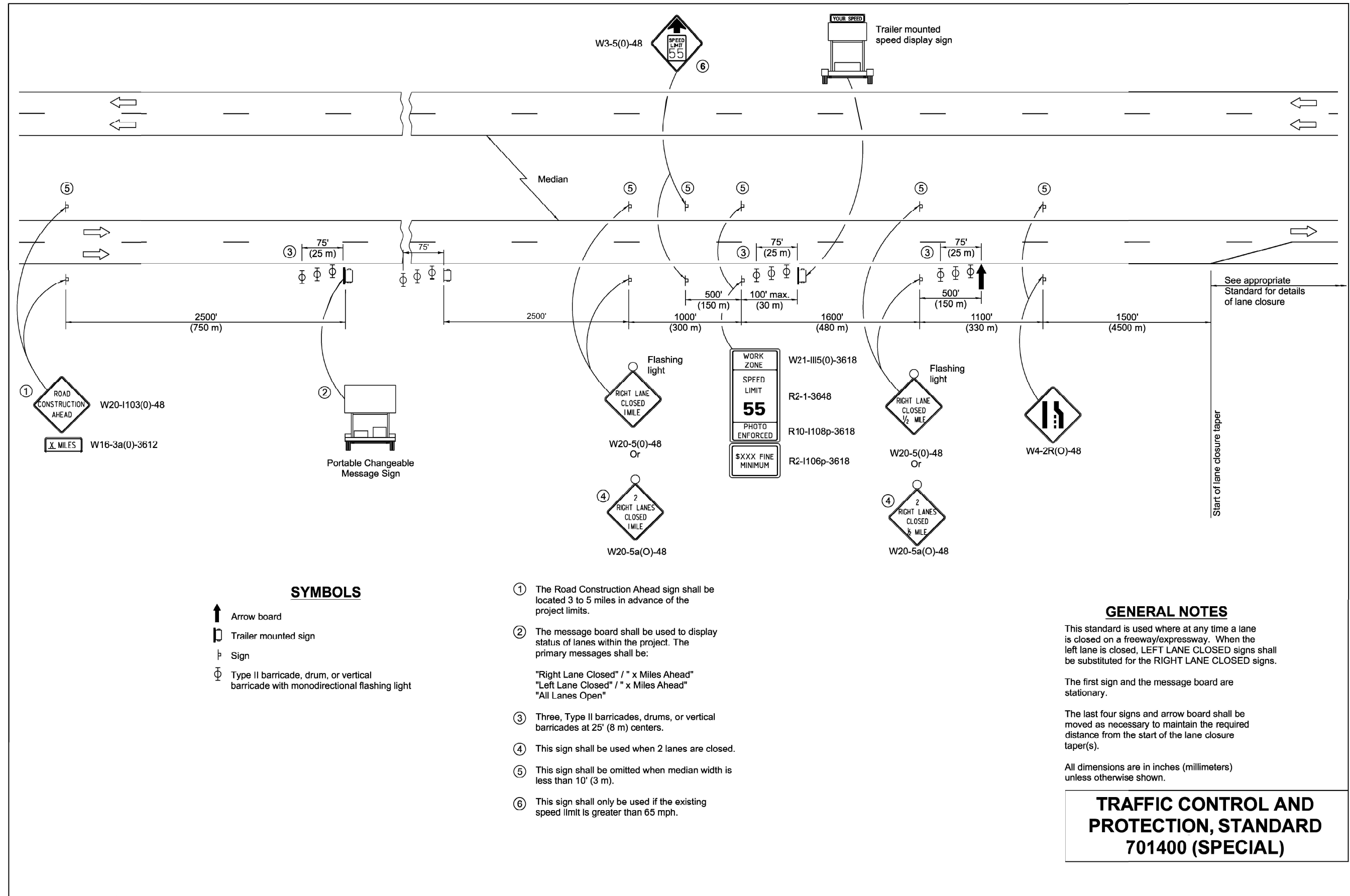
USER NAME = John.P.Green	DESIGNED -	REVISED -
	DRAWN -	REVISED -
	CHECKED -	REVISED -
PLOT DATE = 10/15/2024	DATE -	REVISED -

STATE OF ILLINOIS
DEPARTMENT OF TRANSPORTATION

DECK SLAB REPAIR (PARTIAL DEPTH) SPECIAL

SCALE: SHEET OF SHEETS STA. TO STA.

F.A. RTE.	SECTION	COUNTY	TOTAL SHEETS	SHEET NO.
VAR	DIST 8 BRIDGE DECK REPAIRS 2025-1	VARIOUS	7	4
			CONTRACT NO. 76R77	
		ILLINOIS	FED. AID PROJECT	



SYMBOLS

- ↑ Arrow board
- ▭ Trailer mounted sign
- ⊥ Sign
- ⊕ Type II barricade, drum, or vertical barricade with monodirectional flashing light

- ① The Road Construction Ahead sign shall be located 3 to 5 miles in advance of the project limits.
- ② The message board shall be used to display status of lanes within the project. The primary messages shall be:
"Right Lane Closed" / " x Miles Ahead"
"Left Lane Closed" / " x Miles Ahead"
"All Lanes Open"
- ③ Three, Type II barricades, drums, or vertical barricades at 25' (8 m) centers.
- ④ This sign shall be used when 2 lanes are closed.
- ⑤ This sign shall be omitted when median width is less than 10' (3 m).
- ⑥ This sign shall only be used if the existing speed limit is greater than 65 mph.

GENERAL NOTES

This standard is used where at any time a lane is closed on a freeway/expressway. When the left lane is closed, LEFT LANE CLOSED signs shall be substituted for the RIGHT LANE CLOSED signs.

The first sign and the message board are stationary.

The last four signs and arrow board shall be moved as necessary to maintain the required distance from the start of the lane closure taper(s).

All dimensions are in inches (millimeters) unless otherwise shown.

TRAFFIC CONTROL AND PROTECTION, STANDARD 701400 (SPECIAL)

MODEL: Unlited-2 (Sheet) FILE NAME: c:\pwwork\work\john.p.green@illinois.gov\10200578\0676R77-shh-details.dgn

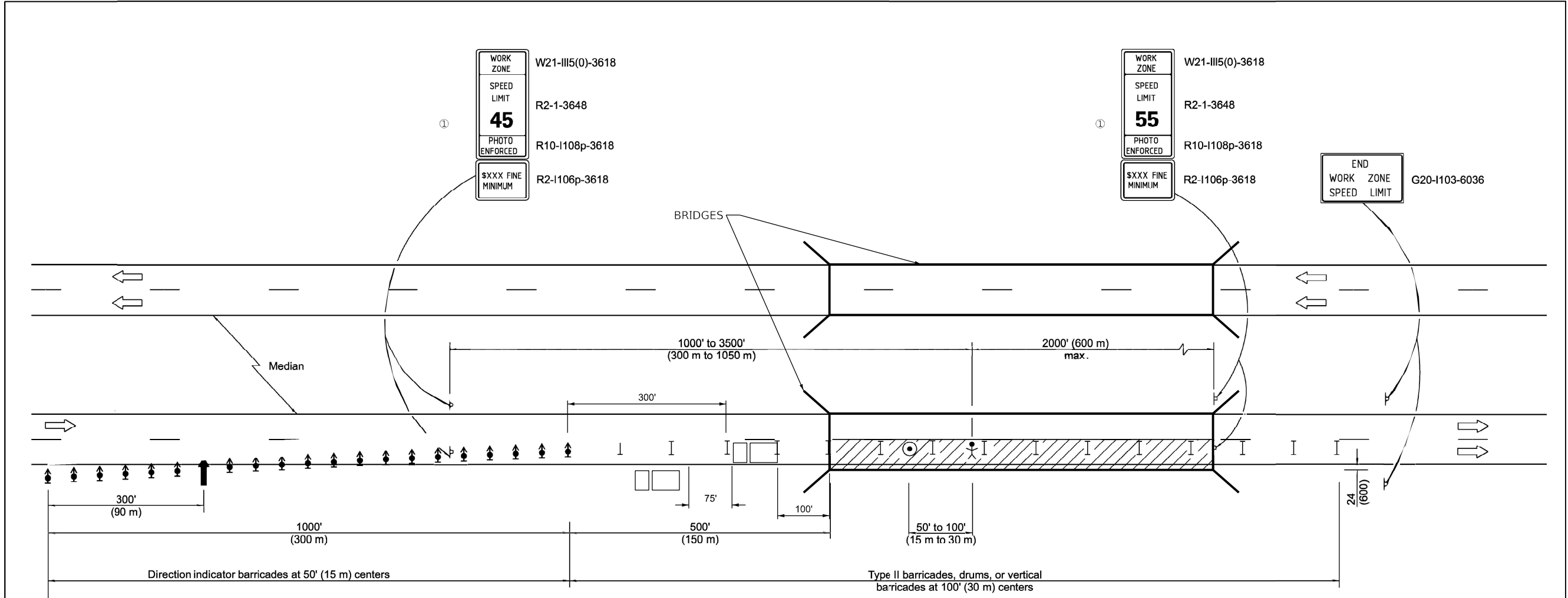
USER NAME = John.P.Green	DESIGNED -	REVISED -
	DRAWN -	REVISED -
	CHECKED -	REVISED -
PLOT DATE = 8/13/2024	DATE -	REVISED -

**STATE OF ILLINOIS
DEPARTMENT OF TRANSPORTATION**

TRAFFIC CONTROL AND PROTECTION, STANDARD 701400

SCALE: SHEET OF SHEETS STA. TO STA.

F.A. RTE.	SECTION	COUNTY	TOTAL SHEETS	SHEET NO.
VAR	DIST 8 BRIDGE DECK REPAIR 2025-1	VARIOUS	7	5
CONTRACT NO. 76R77				
ILLINOIS FED. AID PROJECT				



(SPECIAL)
See Standard 701400 for approach
Start of lane closure taper

SYMBOLS

- ↑ Arrow board
- ▨ Work area
- ⚡ Worker
- ⊥ Sign
- ⬆ Direction indicator barricade with steady burn monodirectional light
- ⊥ Type II barricade, drum, or vertical barricade
- ⊙ Spotter
- ☐ Truck w/Attenuator/TMA

NOTE: Trucks w/ TMA's required when workers present.

① Work Zone speed limit signs shall be moved as necessary to maintain the required spacing between the signs and the workers in each separate work activity. Work Zone Speed Limit 55 Photo Enforced sign shall be omitted when the work area dictates placement of the sign array within 500' (150 m) of the End Work Zone Speed Limit Sign.

GENERAL NOTES

This Standard is used where at any time any vehicle, equipment, workers or their activities will encroach on the lane adjacent to the shoulder, or on the shoulder within 24 (600) of the edge of pavement.

This Standard must always be used in combination with Standard 701400 (Special).

This Standard also applies when work is being performed in the left lane. Under these conditions, the setup would be a mirror image to what is shown.

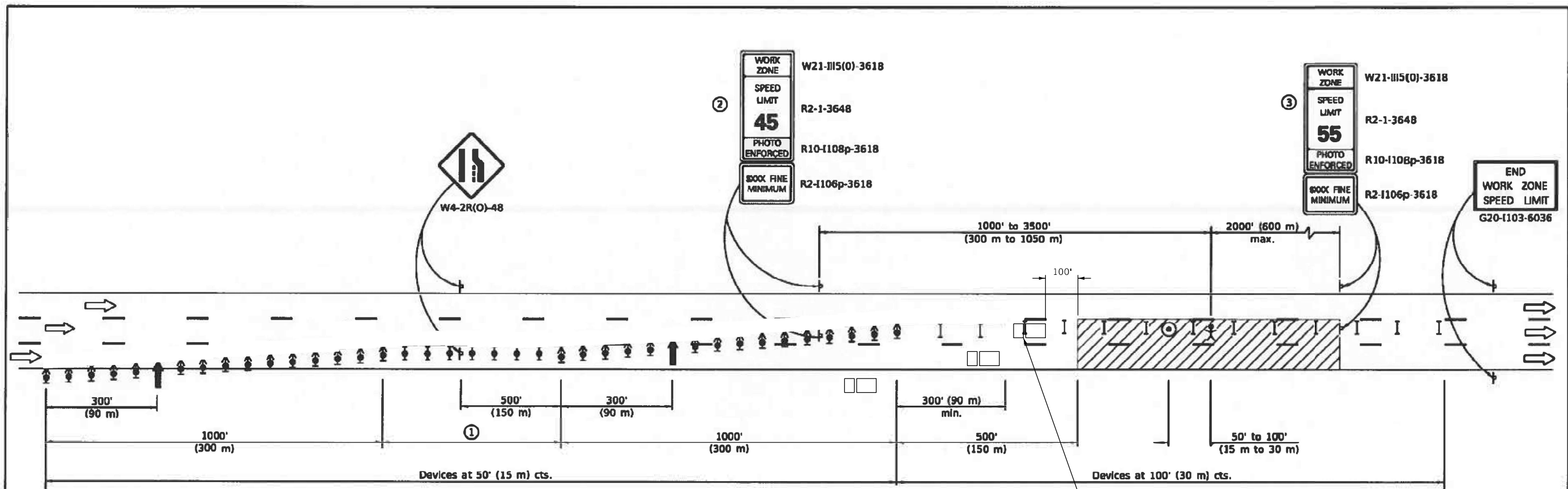
A check barricade shall be placed in the middle of the closed lane and at the shoulder at 1000' (300 m) centers.

All dimensions are in inches (millimeters) unless otherwise shown.

TRAFFIC CONTROL AND PROTECTION, STANDARD 701401 (SPECIAL)

MODEL: Standard 701401 (Sheet)
FILE NAME: c:\p\work\wv\john.p.green@illinois.gov\10200578\0676777-shh-details.dgn

USER NAME = John.P.Green	DESIGNED -	REVISED -	STATE OF ILLINOIS DEPARTMENT OF TRANSPORTATION	TRAFFIC CONTROL AND PROTECTION, STANDARD 701401 (SPECIAL)		F.A. RTE.	SECTION	COUNTY	TOTAL SHEETS	SHEET NO.	
	DRAWN -	REVISED -				VAR.	DIST 8 BRIDGE DECK 2025-1	VARIOUS	7	6	
	CHECKED -	REVISED -				CONTRACT NO. 76R77					
PLOT DATE = 8/15/2024	DATE -	REVISED -				ILLINOIS	FED. AID PROJECT				



(SPECIAL)
See Standard 701400 for approach
Start of lane closure taper

NOTE: FOR FIRST TRUCK 100' FROM WORKZONE AND FOLLOWING TRUCKS 75' EACH.

① The length of the tangent section shall be:

Duration of Closure	Length of Tangent Section
< 14 Days	1000' (300 m)
≥ 14 Days	2000' (600 m)

② Work zone speed limits signs shall be moved as necessary to maintain the required spacing between the signs and the workers in each separate work activity. Work Zone Speed Limit 55 Photo Enforced sign shall be omitted when the work area dictates that placement of the sign array within 500' (150 m) of the End Work Zone Speed Limit sign.

SYMBOLS

- Arrow board
- Work area
- Worker
- Sign
- Direction Indicator barricade with steady burn monodirectional light
- Type II barricade, drum, or vertical barricade with steady burn monodirectional light
- Spotter
- Type II barricade, drum, or vertical barricade
- Truck w/ Attenuator/TMA

NOTE: Truck w/TMA's required when workers present.

GENERAL NOTES

This Standard is used where at any time any vehicle, equipment, workers or their activities will encroach on two lanes of a freeway/expressway.

This Standard must always be used in combination with Standard 701400(SPECIAL).

This Standard also applies when work is being performed in the left lanes. Under these conditions, the set up would be a mirror image to what is shown.

Check barricades shall be placed in the middle of the closed lanes at 1000' (300 m) centers.

All dimensions are in inches (millimeters) unless otherwise shown.

TRAFFIC CONTROL & PROTECTION STANDARD 701446 (SPECIAL)

MODEL: Standard 701446 (Sheet)
FILE NAME: c:\pwworking\john.p.green@illinois.gov\d10200578\0676777-shh-details.dgn

USER NAME = John.P.Green	DESIGNED -	REVISED -
	DRAWN -	REVISED -
	CHECKED -	REVISED -
PLOT DATE = 8/15/2024	DATE -	REVISED -

STATE OF ILLINOIS
DEPARTMENT OF TRANSPORTATION

TRAFFIC CONTROL & PROTECTION STANDARD 701446 (SPECIAL)

SCALE: SHEET OF SHEETS STA. TO STA.

F.A. RTE.	SECTION	COUNTY	TOTAL SHEETS	SHEET NO.
VAR	DIST 8 BRIDGE DECK REPAIRS 2025-1	VARIOUS	7	7
CONTRACT NO. 76R77			ILLINOIS FED. AID PROJECT	