

F.A.I. RTE.	SECTION	COUNTY	TOTAL SHEETS	SHEET NO.
70	82-(1,2,3,4)SG	ST. CLAIR	30	1
		ILLINOIS	CONTRACT NO. 76T56	

11-08-2024 LETTING ITEM 079

FOR INDEX OF SHEETS, SEE SHEET NO. 2
FOR LIST OF HIGHWAY STANDARDS, SEE SHEET NO. 2

TRAFFIC DATA
POPLAR ST. BRIDGE 117,700
I-55/64 58,100 TO 105,300

POSTED SPEED LIMIT
POPLAR ST BRIDGE 50 MPH
I-55/64 55 MPH

FUNCTIONAL CLASSIFICATION: INTERSTATE

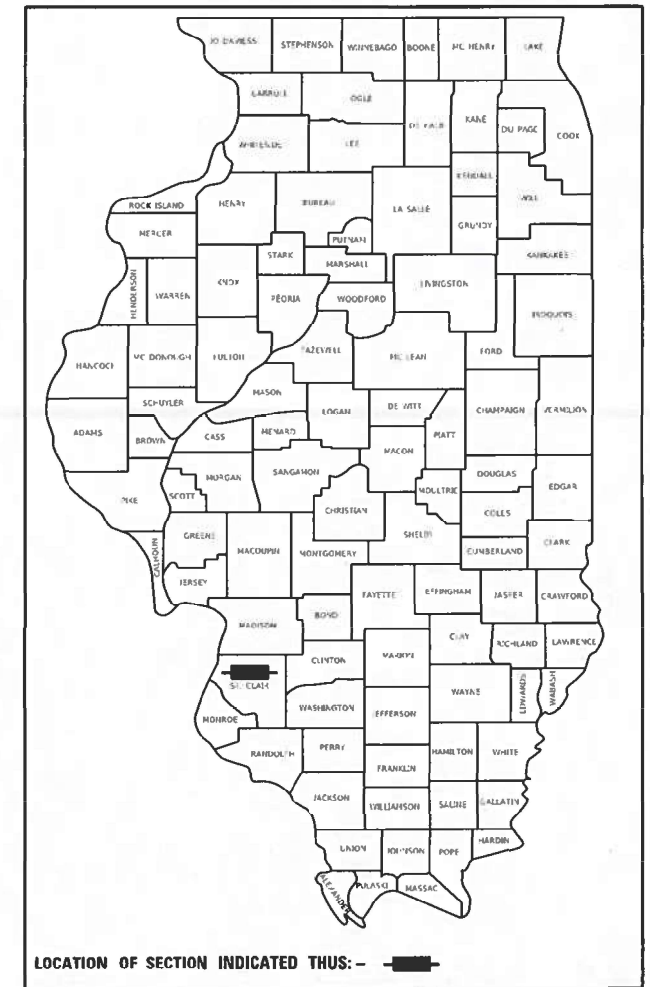
MUNICIPALITY:
CITY OF EAST ST. LOUIS

STATE OF ILLINOIS
DEPARTMENT OF TRANSPORTATION

**PROPOSED
HIGHWAY PLANS**

FAI 70 (I-55 /64 /40)
FROM MISSISSIPPI RIVER TO I-64 (TRI-LEVEL) INTERCHANGE
SECTION 82-(1,2,3,4)SG
PROJECT HSIP-Q8HY(186)
SIGN MAINTENANCE
ST. CLAIR COUNTY

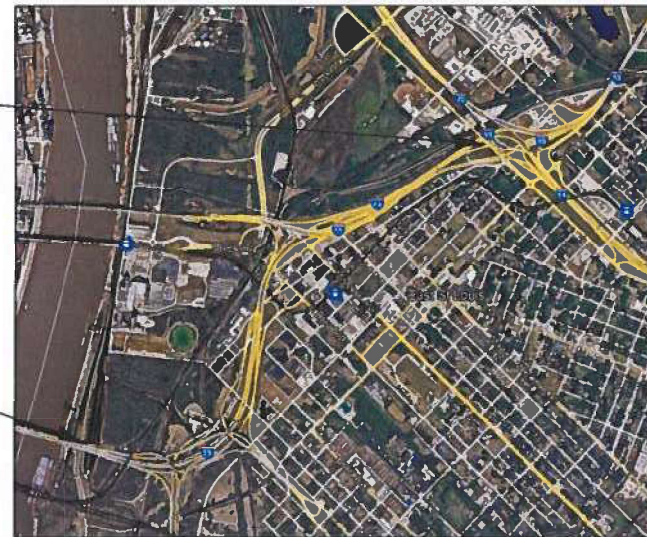
D-98-026-24



C-98-073-24

I-55 /64 STA. 62+00
END IMPROVEMENT

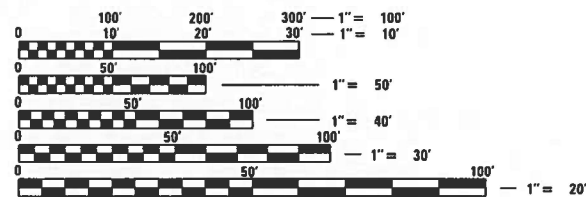
I-55 /64 STA. 80+00
BEGIN IMPROVEMENT



EAST ST. LOUIS
TOWNSHIP

LOCATION MAP
(NOT TO SCALE)

PROJECT LENGTH:
GROSS LENGTH = 14,693 FT = 2.78 MILES
NET LENGTH = 14,693 FT = 2.78 MILES



FULL SIZE PLANS HAVE BEEN PREPARED USING STANDARD ENGINEERING SCALES. REDUCED SIZED PLANS WILL NOT CONFORM TO STANDARD SCALES. IN MAKING MEASUREMENTS ON REDUCED PLANS, THE ABOVE SCALES MAY BE USED.

J.U.L.I.E.
JOINT UTILITY LOCATION INFORMATION FOR EXCAVATORS
1-800-892-0123
OR 811

PROJECT ENGINEER: RICHARD BARBEE
PROJECT MANAGER: CHERYL KEPLAR

CONTRACT NO. 76T56

TRANSYSTEMS



STATE OF ILLINOIS
DEPARTMENT OF TRANSPORTATION

SUBMITTED July 19, 2024
K. H. P. REGIONAL ENGINEER

October 4, 2024
Joe E. A. [Signature]
ENGINEER OF DESIGN AND ENVIRONMENT

October 4, 2024
James [Signature]
DIRECTOR OF HIGHWAYS PROJECT IMPLEMENTATION 13

**PRINTED BY THE AUTHORITY
OF THE STATE OF ILLINOIS**

CODE NUMBER	PAY ITEM	UNIT	TOTAL QUANTITY	90% FED 10% STATE
				SAFETY
				0021
67100100	MOBILIZATION	L SUM	1	1
70200100	NIGHTTIME WORK ZONE LIGHTING	L SUM	1	1
72000300	SIGN PANEL - TYPE 3	SQ FT	4,923	4,923
72400330	REMOVE SIGN PANEL - TYPE 3	SQ FT	4,600	4,600
73301810	OVERHEAD SIGN STRUCTURE WALKWAY, TYPE A	FOOT	219.5	219.5
73800900	REMOVE OVERHEAD SIGN STRUCTURE WALKWAY	FOOT	219.5	219.5
84200600	REMOVAL OF LIGHTING UNIT, NO SALVAGE	EACH	24	24
X7010216	TRAFFIC CONTROL AND PROTECTION, (SPECIAL)	L SUM	1	1
X8040310	ELECTRICAL SERVICE DISCONNECT	EACH	8	8

MODEL: Default
 FILE NAME: p:\pub\sp\m101_p-a-e-transys\corp\pww\Documents\Projects_2022\CH401\401120102\Road\Sheets\0876T56-11-1.dwg



USER NAME = eadruckrey	DESIGNED -	REVISED -
	DRAWN -	REVISED -
PLOT SCALE = 2,0000 ' / in.	CHECKED -	REVISED -
PLOT DATE = 7/1/2024	DATE - 07-01-2024	REVISED -

**STATE OF ILLINOIS
 DEPARTMENT OF TRANSPORTATION**

**SUMMARY OF QUANTITIES
 FAI 70 (I-55 /64 /40)**

SCALE: N.T.S. SHEET 1 OF 1 SHEETS STA. NA TO STA. NA

F.A.I RTE.	SECTION	COUNTY	TOTAL SHEETS	SHEET NO.
70	82-(1,2,3,4)SG	ST. CLAIR	30	3
CONTRACT NO. 76T56			ILLINOIS FED. AID PROJECT	

SIGN REMOVAL

ASSEMBLY ID	LEGEND/DESCRIPTION	ALIGNMENT	STATION	W (FT)	H (FT)	REMOVE SIGN PANEL – TYPE 3	REMOVE OVERHEAD SIGN STRUCTURE WALKWAY	REMOVAL OF LIGHTING UNIT, NO SALVAGE	ELECTRICAL SERVICE DISCONNECT
						SQ. FT	FOOT	EACH	EACH
8S082S003R009.6	ST LOUIS	ROADWAY E	52 + 58	12.0	10.0	120.00		2	1
	CHICAGO /INDIANAPOLIS			14.0	12.0	168.00			
8S082I055R001.1	ROUTE DESTINATION	ROADWAY H /RAMP T	87 + 44	12.0	12.0	144.00	68	3	1
	BUSINESS DISTRICT			11.0	14.0	154.00			
	WELCOME TO ILLINOIS			14.0	7.0	98.00			
8S082I055R001.2	SIGN PANELS TO REMAIN	ROADWAY H /RAMP T	94 + 23			0.00	82	2	1
8S082I055R001.6	WELCOME TO ILLINOIS	I-55N/70E/64E	13 + 90	14.0	7.0	98.00		3	1
	CHICAGO /INDIANAPOLIS			21.0	14.0	294.00			
	LOUISVILLE /ST CLAIR AVE			18.0	12.5	225.00			
8S082I055R001.7	CHICAGO /INDIANAPOLIS	RAMP C	79 + 02	14.5	16.5	240.00		2	1
	WELCOME TO ILLINOIS			9.0	4.0	36.00			
	ML KING DRIVE			14.5	13.5	196.00			
8S082I055L001.8	THIRD STREET EADS BRIDGE	I-55S/70W/64W	27 + 23	13.0	14.5	189.00	69.5	3	1
	ST LOUIS			12.0	12.5	150.00			
	ST LOUIS /CAHOKIA HTS			12.0	12.5	150.00			
8S082I055L002.1	ML KING BRIDGE /DOWNTOWN ST LOUIS	I-55S/70W/64W /RAMP 2-WB	39 + 07	24.5	14.5	356.00		5	1
	THIRD STREET EADS BRIDGE			14.5	11.0	160.00			
	ST LOUIS			22.0	14.5	319.00			
	ML KING BRIDGE /DOWNTOWN ST LOUIS			24.5	14.5	356.00			
8S082I055L002.4	ML KING BRIDGE /DOWNTOWN ST LOUIS	I-55S/70W/64W /RAMP 2-WB	50 + 58	24.5	14.5	356.00		4	1
	ST LOUIS			30.0	14.5	435.00			
	ML KING BRIDGE /DOWNTOWN ST LOUIS			24.5	14.5	356.00			
TOTAL						4,600	219.5	24	8

MODEL: Default
 FILE: M:\MIS_Plan\hsc\p10101\p10101\Road\Signs\2022\CH401\401\200\Road\Signs\08\76T56-Signs\hsc\hsc.dgn



USER NAME = eadruckrey	DESIGNED - EAD	REVISED -
PLOT SCALE = 2,0000 ' / in.	DRAWN - MBM	REVISED -
PLOT DATE = 7/3/2024	CHECKED - CJS	REVISED -
	DATE - 07-01-2024	REVISED -

**STATE OF ILLINOIS
DEPARTMENT OF TRANSPORTATION**

SIGNING SCHEDULE	
FAI 70 (I-55 /64 /40)	
SCALE: N.T.S.	SHEET 1 OF 2 SHEETS STA. 0+00 TO STA. 0+00

F.A.I. RTE.	SECTION	COUNTY	TOTAL SHEETS	SHEET NO.
70	82-(1,2,3,4)SG	ST. CLAIR	30	4
CONTRACT NO. 76T56				
ILLINOIS FED. AID PROJECT				

PROPOSED SIGNS

ASSEMBLY ID	SIGN ID	LEGEND/DESCRIPTION	ALIGNMENT	STATION	SHEETING	COLOR	MOUNTING TYPE	W (FT)	H (FT)	SIGN PANEL – TYPE 3	OVERHEAD SIGN STRUCTURE WALKWAY, TYPE A
										SQ. FT	FOOT
8S082S003R009.6	NB-TR-001-01	ST LOUIS	ROADWAY E	52 + 58	ZZ	GREEN	OVERHEAD	13.0	12.0	156	
	NB-TR-001-02	CHICAGO /INDIANAPOLIS			ZZ	GREEN	OVERHEAD	19.0	14.5	276	
8S082I055R001.1	NB-TR-002-01	ROUTE DESTINATION	ROADWAY H /RAMP T	87 + 44	ZZ	GREEN	OVERHEAD	20.5	11.5	236	68
	NB-TR-002-02	BUSINESS DISTRICT			ZZ	GREEN	OVERHEAD	22.0	15.0	330	
	NB-TR-002-03	WELCOME TO ILLINOIS (PROVIDED BY IDOT)					OVERHEAD	14.0	7.0	98	
8S082I055R001.2		SIGN PANELS TO REMAIN	ROADWAY H /RAMP T	94 + 23						0	82
8S082I055R001.6	NB-TR-003-01	WELCOME TO ILLINOIS (PROVIDED BY IDOT)	I-55N/70E/64E	13 + 90			OVERHEAD	14.0	7.0	98	
	NB-TR-003-02	CHICAGO /INDIANAPOLIS			ZZ	GREEN	OVERHEAD	15.5	14.5	225	
	NB-TR-003-03	LOUISVILLE /ST CLAIR AVE			ZZ	GREEN	OVERHEAD	20.5	15.0	308	
8S082I055R001.7	NB-TR-004-01	CHICAGO /INDIANAPOLIS	RAMP C	79 + 02			OVERHEAD	16.0	15.5	248	
	NB-TR-004-02	WELCOME TO ILLINOIS (PROVIDED BY IDOT)					OVERHEAD	14.0	7.0	98	
	NB-TR-004-03	ML KING DRIVE			ZZ	GREEN	OVERHEAD	11.0	9.0	99	
8S082I055L001.8	SB-TR-002-01	THIRD STREET EADS BRIDGE	I-55S/70W/64W	27 + 23			OVERHEAD	15.5	16.5	256	69.5
	SB-TR-002-02	ST LOUIS			ZZ	GREEN	OVERHEAD	15.5	12.0	186	
	SB-TR-002-03	ST LOUIS /CAHOKIA HTS			ZZ	GREEN	OVERHEAD	19.5	14.5	283	
8S082I055L002.1	SB-TR-001-01	ML KING BRIDGE /DOWNTOWN ST LOUIS	I-55S/70W/64W /RAMP 2-WB	39 + 07			OVERHEAD	22.5	13.5	304	
	SB-TR-001-02	THIRD STREET EADS BRIDGE			ZZ	GREEN	OVERHEAD	16.0	16.5	264	
	SB-TR-001-03	ST LOUIS			ZZ	GREEN	OVERHEAD	23.0	12.0	276	
	SB-TR-001-04	ML KING BRIDGE /DOWNTOWN ST LOUIS			ZZ	GREEN	OVERHEAD	22.5	11.5	259	
8S082I055L002.4	SB-TR-003-01	ML KING BRIDGE /DOWNTOWN ST LOUIS	I-55S/70W/64W /RAMP 2-WB	50 + 58			OVERHEAD	22.5	13.5	304	
	SB-TR-003-02	ST LOUIS			ZZ	GREEN	OVERHEAD	30.0	12.0	360	
	SB-TR-003-03	ML KING BRIDGE /DOWNTOWN ST LOUIS			ZZ	GREEN	OVERHEAD	22.5	11.5	259	
TOTAL										4,923	219.5

MODEL: Default
 FILE: M:\MIS_Plan\Submittal\01_p-a-e-transys\corp\pww\Documents\Projects_2022\CH401\401120103\Road\Sheet\0875656-ht-schedule.k...
 MODEL: Default
 FILE: M:\MIS_Plan\Submittal\01_p-a-e-transys\corp\pww\Documents\Projects_2022\CH401\401120103\Road\Sheet\0875656-ht-schedule.k...



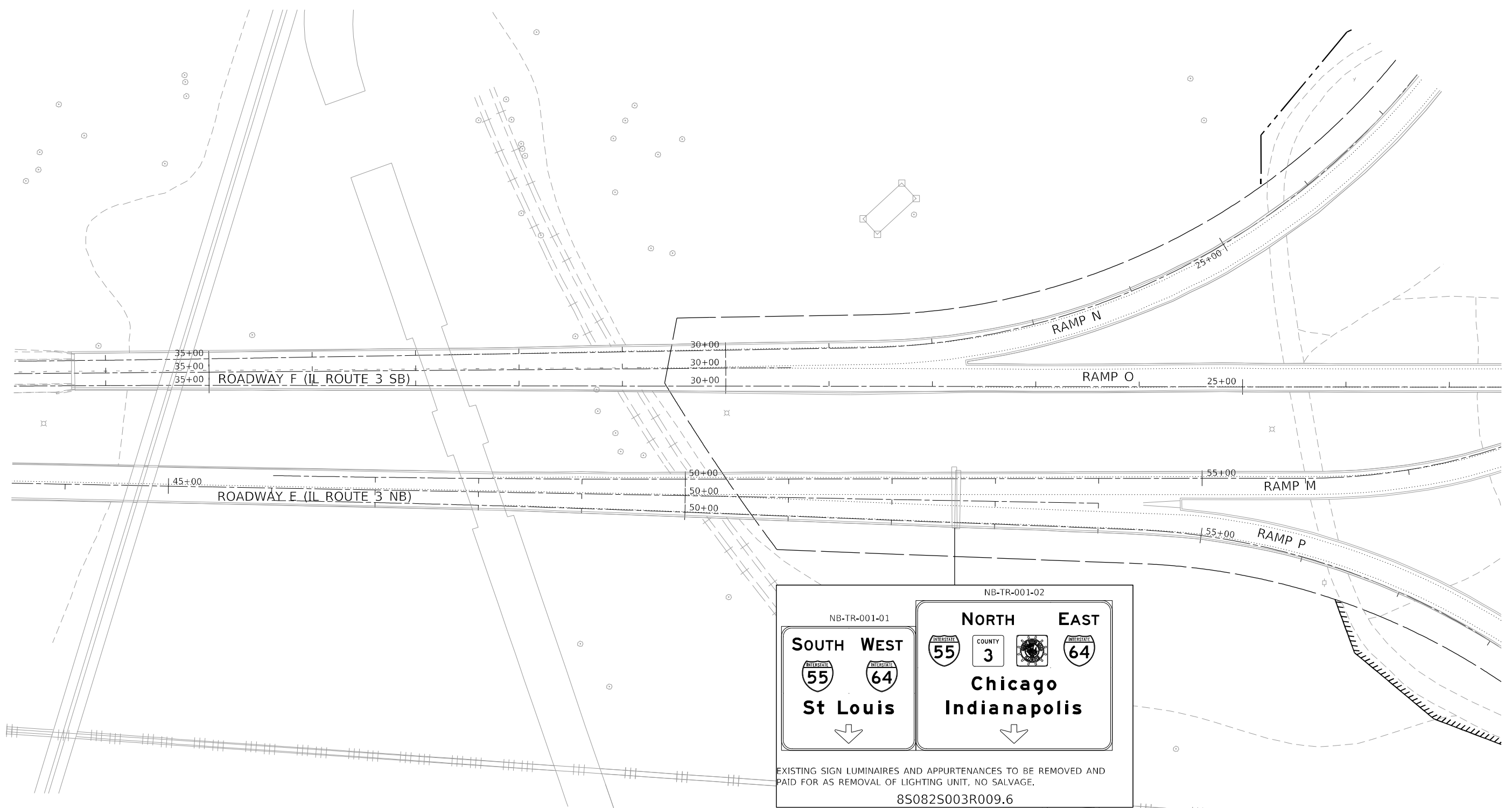
USER NAME = eadruckrey	DESIGNED - EAD	REVISED -
	DRAWN - MBM	REVISED -
PLOT SCALE = 2,0000' / in.	CHECKED - CJS	REVISED -
PLOT DATE = 7/3/2024	DATE - 07-01-2024	REVISED -

**STATE OF ILLINOIS
DEPARTMENT OF TRANSPORTATION**

**SIGNING SCHEDULE
FAI 70 (I-55 /64 /40)**

SCALE: N.T.S. SHEET 2 OF 2 SHEETS STA. 0+00 TO STA. 0+00

F.A.I. RTE.	SECTION	COUNTY	TOTAL SHEETS	SHEET NO.
70	82-(1,2,3,4)SG	ST. CLAIR	30	5
CONTRACT NO. 76T56				
ILLINOIS FED. AID PROJECT				



NB-TR-001-01

SOUTH WEST
 I-55 I-64
St Louis
 ↓

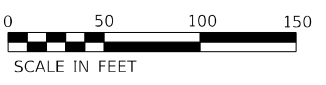
NB-TR-001-02

NORTH EAST
 I-55 COUNTY 3 I-64
Chicago Indianapolis
 ↓

EXISTING SIGN LUMINAIRES AND APPURTENANCES TO BE REMOVED AND PAID FOR AS REMOVAL OF LIGHTING UNIT, NO SALVAGE.

8S082S003R009.6

NOTES:
 EXISTING CONDUIT AND JUNCTION BOX ATTACHED TO STRUCTURE BELOW SIGN STRUCTURE SHALL BE REMOVED AND PAID FOR AS ELECTRICAL SERVICE DISCONNECT



MODEL: Default
 FILE: \\naulc01\pub\hsc\p101\p_a_e\transys\corp\pww\1\Documents\Projects\2022\CH401\401120103\Road\Sheets\08756-56-sh-clair\nc01.dgn



USER NAME = eadruckrey	DESIGNED - EAD	REVISED -
PLOT SCALE = 100,0000' / in.	DRAWN - MBM	REVISED -
PLOT DATE = 7/1/2024	CHECKED - CJS	REVISED -
	DATE - 07-01-2024	REVISED -

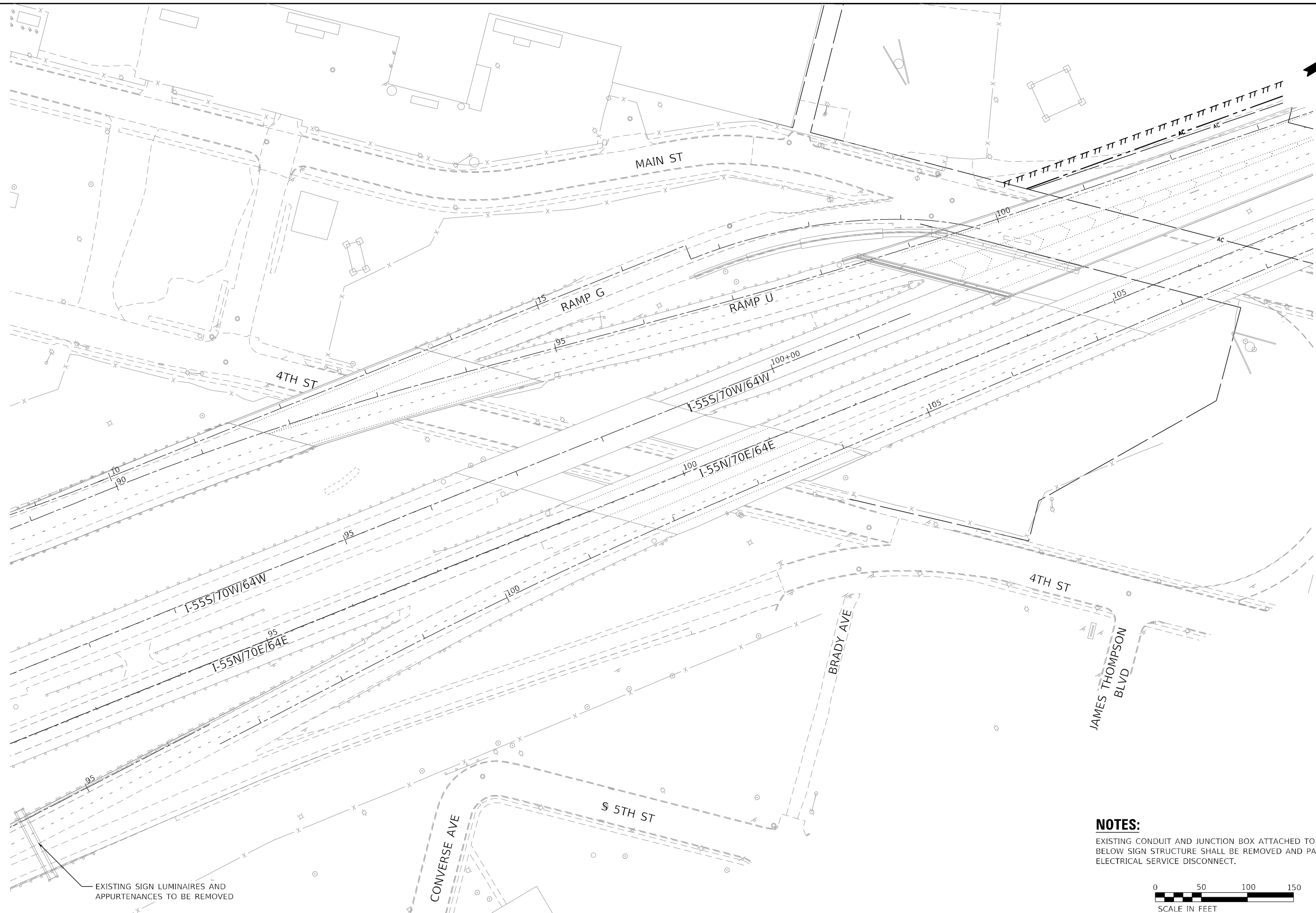
**STATE OF ILLINOIS
 DEPARTMENT OF TRANSPORTATION**

SIGNING PLAN
FAI 70 (I-55 /64 /40)

SCALE: 1"=50' SHEET 1 OF 7 SHEETS STA. 0+00 TO STA. 0+00

F.A.J. RTE.	SECTION	COUNTY	TOTAL SHEETS	SHEET NO.
70	82-(1,2,3,4)SG	ST. CLAIR	30	6
ILLINOIS FED. AID PROJECT			CONTRACT NO. 76T56	

MODEL: Default
 FILE: \\na116201\pub\hsp\mnt01\ba-a\transys\corp\pww\1\Documents\Projects\2022\CH401\401\201\01\Road\Sheet\02\76T56-FH-Camp\03.dgn



EXISTING SIGN LUMINAIRES AND APPURTENANCES TO BE REMOVED

NOTES:
 EXISTING CONDUIT AND JUNCTION BOX ATTACHED TO STRUCTURE BELOW SIGN STRUCTURE SHALL BE REMOVED AND PAID FOR AS ELECTRICAL SERVICE DISCONNECT.



USER NAME = eadruckrey	DESIGNED - EAD	REVISED -
PLOT SCALE = 100,0000' / in.	DRAWN - MBM	REVISED -
PLOT DATE = 7/1/2024	CHECKED - CJS	REVISED -
	DATE - 07-01-2024	REVISED -

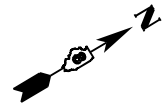
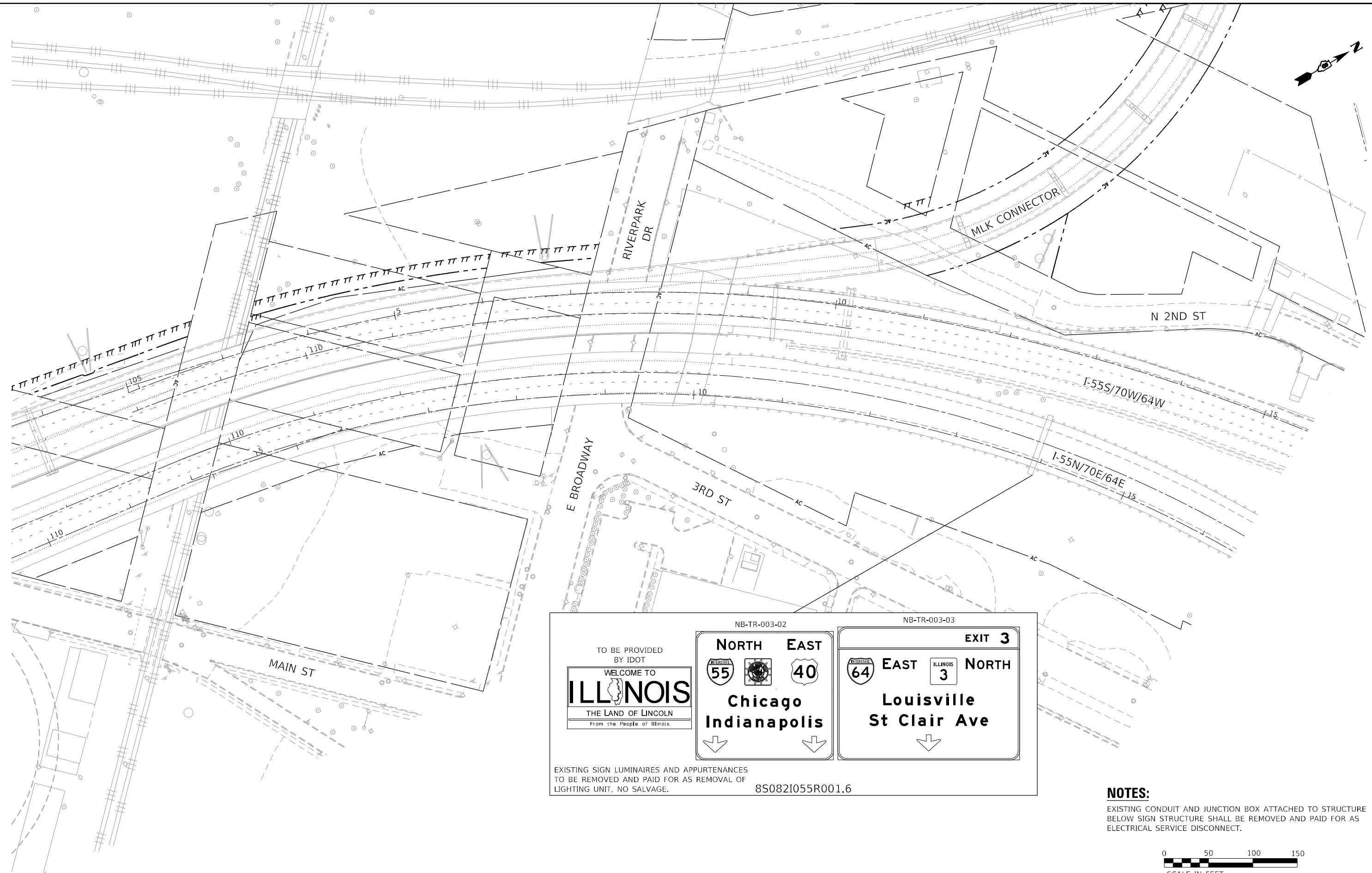
**STATE OF ILLINOIS
 DEPARTMENT OF TRANSPORTATION**

**SIGNING PLAN
 FAI 70 (I-55 / 64 / 40)**

SCALE: 1"=50' SHEET 3 OF 7 SHEETS STA. 0+00 TO STA. 0+00

F.A.I. RTE.	SECTION	COUNTY	TOTAL SHEETS	SHEET NO.
70	82-(1,2,3,4)SG	ST. CLAIR	30	8
CONTRACT NO. 76T56			ILLINOIS FED. AID PROJECT	

MODEL: Default
 FILE: 850821055R001.6.dwg
 PROJECT: 2022\CH401\0401\2020\Road\Sheet\02\76T56-SH-CLAIR\04.dwg



TO BE PROVIDED
BY IDOT

WELCOME TO
ILLINOIS
THE LAND OF LINCOLN
From the People of Illinois

NB-TR-003-02

NORTH

55

EAST

40

**Chicago
Indianapolis**

↓

NB-TR-003-03

EXIT 3

64

EAST

3

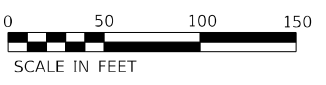
NORTH

**Louisville
St Clair Ave**

↓

EXISTING SIGN LUMINAIRES AND APPURTENANCES
TO BE REMOVED AND PAID FOR AS REMOVAL OF
LIGHTING UNIT, NO SALVAGE. 850821055R001.6

NOTES:
EXISTING CONDUIT AND JUNCTION BOX ATTACHED TO STRUCTURE
BELOW SIGN STRUCTURE SHALL BE REMOVED AND PAID FOR AS
ELECTRICAL SERVICE DISCONNECT.

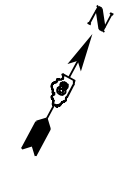


USER NAME = eadruckrey	DESIGNED - EAD	REVISED -
DRAWN - MBM	REVISED -	
PLOT SCALE = 100,0000' / in.	CHECKED - CJS	REVISED -
PLOT DATE = 7/3/2024	DATE - 07-01-2024	REVISED -

**STATE OF ILLINOIS
DEPARTMENT OF TRANSPORTATION**

SIGNING PLAN			
FAI 70 (I-55 / 64 / 40)			
SCALE: 1"=50'	SHEET 4	OF 7 SHEETS	STA. 0+00 TO STA. 0+00

F.A.J. RTE.	SECTION	COUNTY	TOTAL SHEETS	SHEET NO.
70	82-(1,2,3,4)SG	ST. CLAIR	30	9
CONTRACT NO. 76T56				
ILLINOIS FED. AID PROJECT				



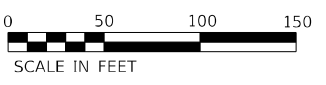
SB-TR-001-01	SB-TR-001-02	SB-TR-001-03	SB-TR-001-04
LEFT EXIT 2 B ML King Bridge Downtown St Louis EXIT ONLY	LEFT EXIT 2 A Third Street Eads Bridge NEXT LEFT	SOUTH WEST St Louis EXIT ONLY	EXIT 2 C ML King Bridge Downtown St Louis EXIT ONLY

EXISTING SIGN LUMINAIRES AND APPURTENANCES TO BE REMOVED AND PAID FOR AS REMOVAL OF LIGHTING UNIT, NO SALVAGE.

8S082I055L002.1



NOTES:
 EXISTING CONDUIT AND JUNCTION BOX ATTACHED TO STRUCTURE BELOW SIGN STRUCTURE SHALL BE REMOVED AND PAID FOR AS ELECTRICAL SERVICE DISCONNECT.



MODEL: Default
 FILE: 8/14/24 10:00 AM
 PROJECT: 2022\CH401\0401\2024\Road\Drawings\Project - 2022\CH401\0401\2024\Road\Drawings\08-25-24-8S082I055L002.dwg

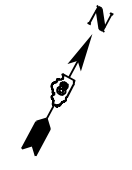


USER NAME = eadruckrey	DESIGNED - EAD	REVISED -	
	DRAWN - MBM	REVISED -	
PLOT SCALE = 100,0000' / in.	CHECKED - CJS	REVISED -	
PLOT DATE = 7/1/2024	DATE - 07-01-2024	REVISED -	

STATE OF ILLINOIS
DEPARTMENT OF TRANSPORTATION

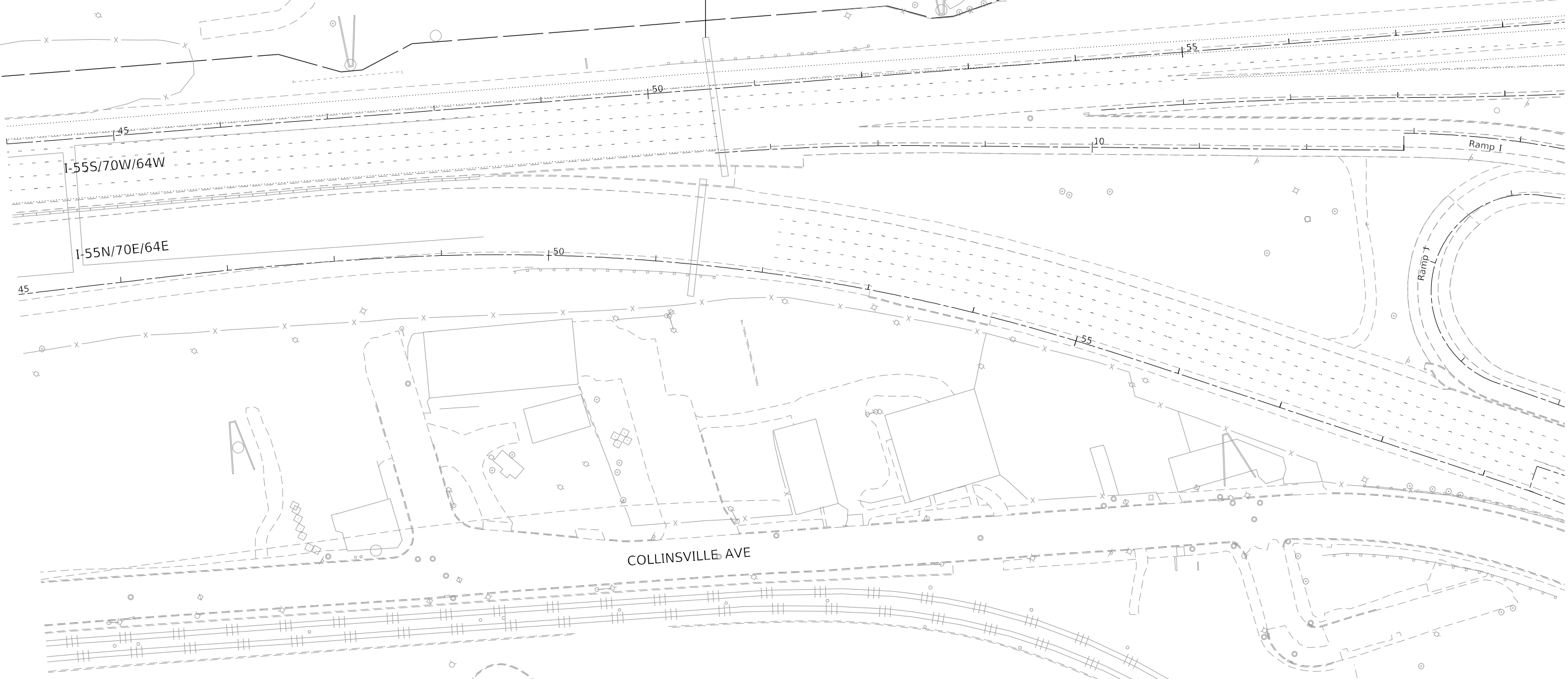
SIGNING PLAN			
FAI 70 (I-55 / 64 / 40)			
SCALE: 1"=50'	SHEET 6	OF 7 SHEETS	STA. 0+00 TO STA. 0+00

F.A.J. RTE.	SECTION	COUNTY	TOTAL SHEETS	SHEET NO.
70	82-(1,2,3,4)SG	ST. CLAIR	30	11
CONTRACT NO. 76T56				
ILLINOIS FED. AID PROJECT				



SB-TR-003-01 LEFT EXIT 2 B ML King Bridge Downtown St Louis EXIT ONLY	SB-TR-003-02 SOUTH St Louis	SB-TR-003-03 WEST ML King Bridge Downtown St Louis EXIT ONLY
--	---	---

EXISTING SIGN LUMINAIRES AND APPURTENANCES TO BE REMOVED AND PAID FOR AS REMOVAL OF LIGHTING UNIT, NO SALVAGE. 850821055L002.4



NOTES:
 EXISTING CONDUIT AND JUNCTION BOX ATTACHED TO STRUCTURE BELOW SIGN STRUCTURE SHALL BE REMOVED AND PAID FOR AS ELECTRICAL SERVICE DISCONNECT.



MODEL: Default
 FILE: \\na16c-pw\hsc\pnt01-pw-a-transys\scop\pww\1\Documents\Projects_2022\CH401\401.120103\Road\Sheets\02\6756-sh-signing\07.dgn



USER NAME = eadruckrey	DESIGNED - EAD	REVISED -
DRAWN - MBM	REVISED -	
PLOT SCALE = 100,0000' / in.	CHECKED - CJS	REVISED -
PLOT DATE = 7/1/2024	DATE - 07-01-2024	REVISED -

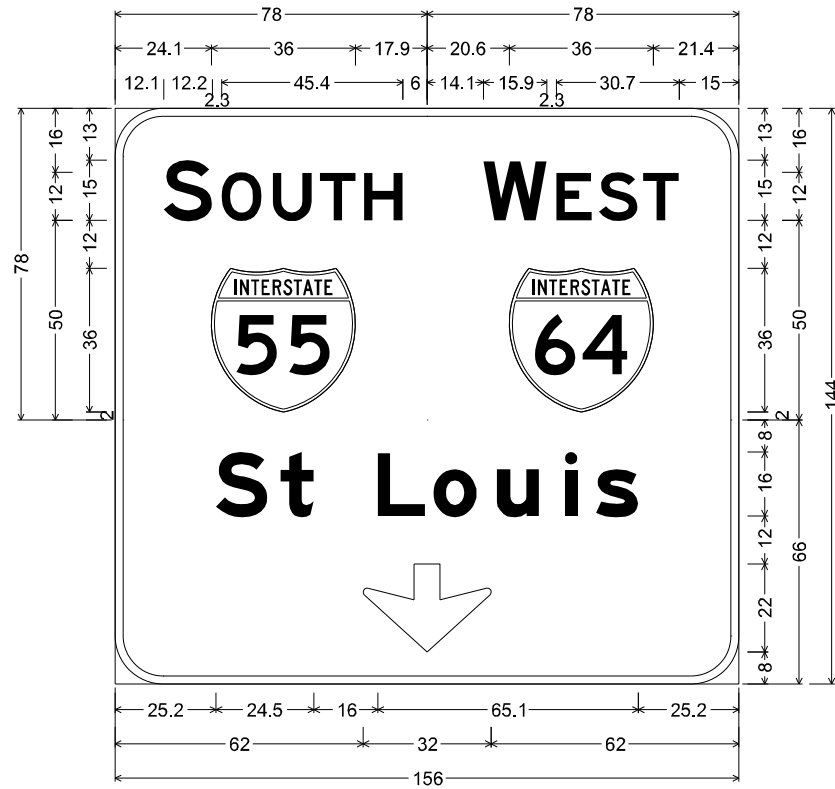
STATE OF ILLINOIS
DEPARTMENT OF TRANSPORTATION

SIGNING PLAN
FAI 70 (I-55 / 64 / 40)

SCALE: 1"=50' SHEET 7 OF 7 SHEETS STA. 0+00 TO STA. 0+00

F.A.I. RTE.	SECTION	COUNTY	TOTAL SHEETS	SHEET NO.
70	82-(1,2,3,4)5G	ST. CLAIR	30	12
CONTRACT NO. 76T56				
ILLINOIS FED. AID PROJECT				

SIGN NUMBER: NB-TR-001-01



12.0" Radius, 2.0" Border, White on Green;
"SOUTH", E 2K;

12.0" Radius, 2.0" Border, White on Green;
"WEST", E 2K;

12.0" Radius, 2.0" Border, White on Green;
"St Louis", E Mod 2K; Down Arrow 22.0" 270°;

Table of widths and spaces

S	O	U	T	H						
12.1	12.2	2.3	10.1	2.7	9.8	2.0	9.0	2.0	9.8	84.0

24.1	36.0	95.9
------	------	------

W	E	S	T					
92.1	15.9	2.3	9.0	1.7	9.7	1.3	9.0	15.0

98.6	36.0	21.4
------	------	------

S	t	L	o	u	i	s								
25.2	13.0	3.2	8.3	16.0	11.8	2.1	10.9	4.9	10.6	6.4	3.2	4.6	10.6	25.2

62.0	32.0	62.0
------	------	------

SIGN NUMBER: NB-TR-001-02



12.0" Radius, 2.0" Border, White on Green;
"NORTH", E 2K; Rounded Rectangle 4.0" Radius;

12.0" Radius, 2.0" Border, White on Green;
"EAST", E 2K;

12.0" Radius, 2.0" Border, White on Green;
"Chicago", E Mod 2K; "Indianapolis", E Mod 2K; Down Arrow 22.0" 270°;

Table of widths and spaces

N	O	R	T	H						
54.1	12.1	3.1	10.1	2.7	9.8	1.3	9.0	2.0	9.7	114.1

15.0	36.0	15.0	36.0	15.0	36.0	75.0
------	------	------	------	------	------	------

E	A	S	T					
166.6	11.3	1.5	12.2	1.3	9.7	1.4	9.0	15.0

171.8	36.0	20.2
-------	------	------

C	h	i	c	a	g	o						
64.7	13.0	4.5	10.5	6.4	3.2	5.0	10.5	3.6	10.5	5.0	10.9	64.7

I	n	d	i	a	n	a	p	o	l	i	s													
35.7	3.2	5.4	10.6	4.9	10.6	6.4	3.2	5.0	10.5	6.4	10.6	4.9	10.6	6.4	10.6	3.5	10.9	4.9	3.2	6.4	3.2	4.7	10.5	35.7

98.0	32.0	98.0
------	------	------

NOTE

TYPE ZZ SHEETING SHALL BE USED FOR ALL GREEN SIGN PANELS.

MODEL: Default; FILE: N:\MISC_Plan\hscgwint01_p-a-transportation\scop\pwp\1\Documents\Projects_2022\CH401\401120101\Road\Signets\0876556-fh-sign-detail

TRANSYSTEMS

USER NAME = mibmcwhorter	DESIGNED - EAD	REVISED -
PLOT SCALE = 100,0000' / in.	DRAWN - MBM	REVISED -
PLOT DATE = 10/10/2024	CHECKED - CJS	REVISED -
	DATE - 07-01-2024	REVISED -

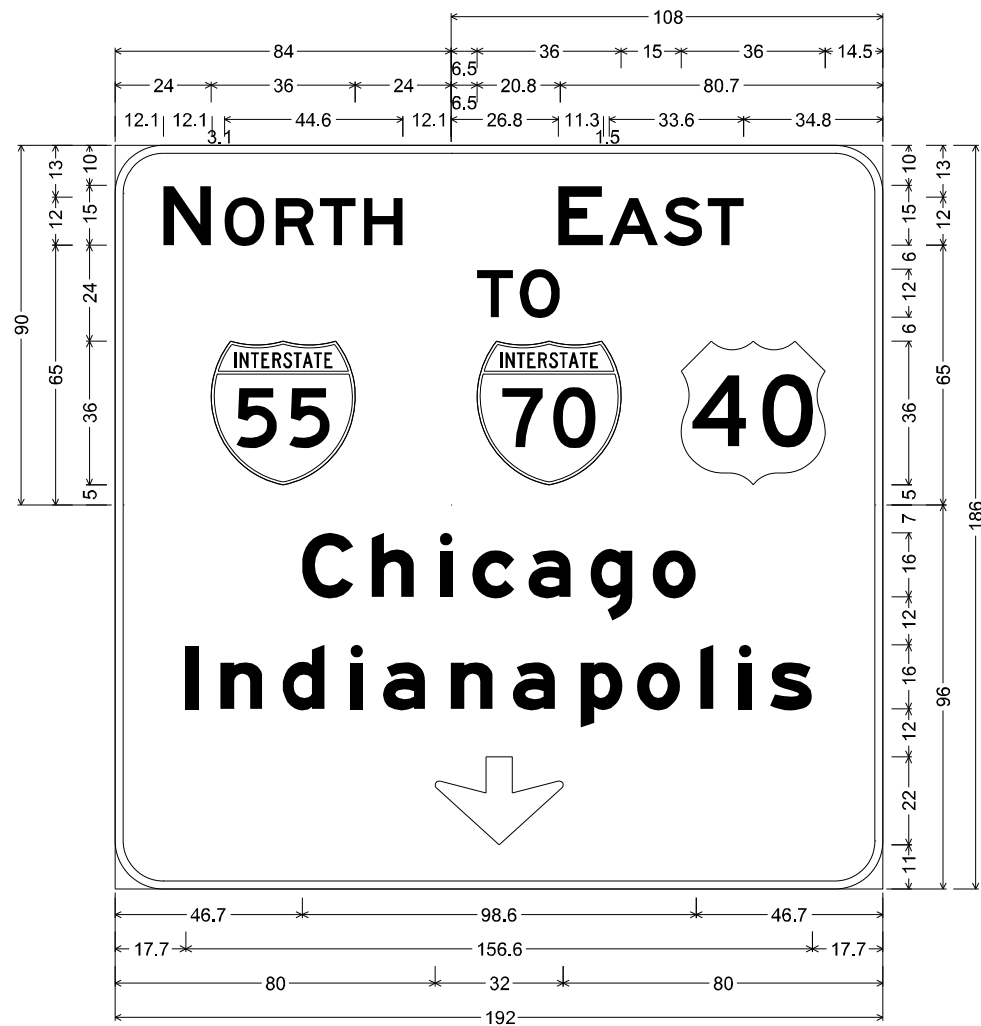
**STATE OF ILLINOIS
DEPARTMENT OF TRANSPORTATION**

**GUIDE SIGN PANEL DETAILS
FAI 70 (I-55 / 64 / 40)**

SCALE: N.T.S.	SHEET 1	OF 9	SHEETS	STA. NA	TO STA. NA
---------------	---------	------	--------	---------	------------

F.A.J. RTE.	SECTION	COUNTY	TOTAL SHEETS	SHEET NO.
70	82-(1,2,3,4)SG	ST. CLAIR	30	13
CONTRACT NO. 76T56			ILLINOIS FED. AID PROJECT	

SIGN NUMBER: NB-TR-004-01



12.0" Radius, 2.0" Border, White on Green;
 "NORTH", E 2K;
 12.0" Radius, 2.0" Border, White on Green;
 "EAST", E 2K; "TO", E 2K;
 12.0" Radius, 2.0" Border, White on Green;
 "Chicago", E Mod 2K; "Indianapolis", E Mod 2K; Down Arrow 22.0" 270°;

Table of widths and spaces

N	12.1	12.1	3.1	O	10.1	2.7	R	9.8	1.3	T	9.0	2.0	H	9.7	120.1
55	24.0	36.0	132.0	E	110.8	11.3	1.5	A	12.2	1.3	9.7	1.4	S	9.0	34.8
T	90.5	9.0	1.7	O	10.1	80.7	70	90.5	36.0	15.0	36.0	14.5	40	46.7	13.0
C	46.7	13.0	4.5	h	10.5	6.4	i	3.2	5.0	c	10.5	3.6	a	10.5	5.0
g	10.5	5.0	10.9	46.7	17.7	3.2	5.4	10.6	4.9	10.6	6.4	3.2	5.0	10.5	6.4
n	10.6	4.9	10.6	6.4	3.2	5.0	10.5	6.4	10.6	4.9	10.6	6.4	10.6	3.5	10.9
o	4.9	3.2	6.4	3.2	4.7	10.5	17.7	80.0	32.0	80.0	80.0	32.0	80.0		

SIGN NUMBER: NB-TR-004-03



12.0" Radius, 2.0" Border, White on Green;
 "ML King", E Mod 2K; "Drive", E Mod 2K;
 Arrow 160 - 35.0" 45°;

Table of widths and spaces

M	16.2	14.9	4.5	L	11.8
K	16.0	13.2	3.5	i	3.2
n	6.4	10.5	5.0	g	10.6
16.2	34.2	13.0	4.8	8.0	3.8
3.2	4.7	12.3	3.2	10.6	34.2
52.2	27.6	52.2			

NOTE

TYPE ZZ SHEETING SHALL BE USED FOR ALL GREEN SIGN PANELS.

MODEL: Default
 FILE: N:\MIS_Plan\hospwin101_p-a-e-transyscorp.com\transyscorp\pww\1\Documents\Projects_2022\CH401\401_120103\Road\Signs\09_7556-sh-sign-detail

TRANSYSTEMS

USER NAME = eadruckrey	DESIGNED - EAD	REVISED -
PLOT SCALE = 100,0000' / in.	DRAWN - MBM	REVISED -
PLOT DATE = 7/3/2024	CHECKED - CJS	REVISED -
	DATE - 07-01-2024	REVISED -

**STATE OF ILLINOIS
 DEPARTMENT OF TRANSPORTATION**

**GUIDE SIGN PANEL DETAILS
 FAI 70 (I-55 /64 /40)**

SCALE: N.T.S. SHEET 4 OF 9 SHEETS STA. NA TO STA. NA

F.A.J. RTE.	SECTION	COUNTY	TOTAL SHEETS	SHEET NO.
70	82-(1,2,3,4)SG	ST. CLAIR	30	16
ILLINOIS FED. AID PROJECT			CONTRACT NO. 76T56	

SIGN NUMBER: SB-TR-002-03



12.0" Radius, 2.0" Border, White on Green;
"TO", E 2K 80% spacing;

12.0" Radius, 2.0" Border, White on Green;
"SOUTH", E 2K 80% spacing; Rounded Rectangle 3.0" Radius;

12.0" Radius, 2.0" Border, White on Green;
"St Louis", E Mod 2K; "Cahokia Heights", E Mod 2K; Down Arrow 22.0" 270°;

Table of widths and spaces

37.8	T	9.0	1.3	O	10.1	175.8																		
30.0	44	36.0	168.0																					
131.5	S	12.2	1.8	O	10.1	2.2	U	9.7	1.6	T	9.0	1.7	H	9.7	44.5									
117.0	44	36.0	15.0	36.0	30.0																			
64.2	S	13.0	3.2	t	8.3	16.0	L	11.8	2.1	o	10.9	4.9	u	10.6	6.4	i	3.2	4.6	s	10.6	64.2			
12.2	C	13.0	3.0	a	10.6	6.4	h	10.5	5.0	o	10.9	4.9	k	10.6	4.9	i	3.2	5.0	a	10.6				
				H	12.9	4.0	e	10.6	4.9	i	3.2	5.0	g	10.6	6.4	h	10.5	4.7	t	8.3	3.3	s	10.6	12.2
101.0	44	32.0	101.0																					

SIGN NUMBER: SB-TR-001-01



12.0" Radius, 2.0" Border, White on Green;
"EXIT", E 2K 120% spacing;

12.0" Radius, 2.0" Border, White on Green;
"2", E 2K; "B", E 2K;

12.0" Radius, 2.0" Border, White on Green;
"ML King Bridge", E Mod 2K; "Downtown St Louis", E Mod 2K;

12.0" Radius, 2.0" Border, Black on Yellow;
Down Arrow 22.0" 315°; "EXIT", E Mod 2K 140% spacing; "ONLY", E Mod 2K; Down Arrow 22.0" 315°;

Table of widths and spaces

5.0	60.0	205.0																																
19.2	E	7.5	1.7	X	8.7	2.4	I	1.8	2.0	T	7.5	219.2																						
66.0	2	12.1	7.5	B	12.2	172.2																												
37.7	M	14.9	4.5	L	11.8	16.0	K	13.1	3.6	3.2	6.4	n	10.5	5.0	g	10.5	16.0	B	13.0	4.5	8.0	3.8	i	3.2	5.0	d	10.5	5.0	g	10.6	4.9	e	10.6	37.7
12.1	D	13.0	3.3	o	10.9	3.2	w	16.3	4.7	n	10.5	4.7	t	8.3	3.7	o	10.9	3.2	w	16.3	4.6	n	10.6	16.0	S	12.9	3.2	t	8.4					
				L	11.8	2.1	o	10.9	4.9	u	10.6	6.4	i	3.2	4.6	s	10.6	12.1																
46.7	23.2	15.0	E	8.8	2.4	X	10.4	3.6	I	2.4	3.0	T	8.9	15.0	O	10.1	2.8	N	9.8	3.3	L	8.9	0.7	Y	12.1	13.0	23.2	46.7						

NOTE

TYPE ZZ SHEETING SHALL BE USED FOR ALL GREEN SIGN PANELS.

MODEL: Default
 FILE: NAME: p:\boc\p101_ea_e\transyscorp\p101\Documents\Projects_2022\CH401\401_120101\Road\Signets\0875156-sh-sign-deta11



USER NAME = mibmcwhorter	DESIGNED - EAD	REVISED -
PLOT SCALE = 100,0000' / in.	CHECKED - CJS	REVISED -
PLOT DATE = 10/10/2024	DATE - 07-01-2024	REVISED -

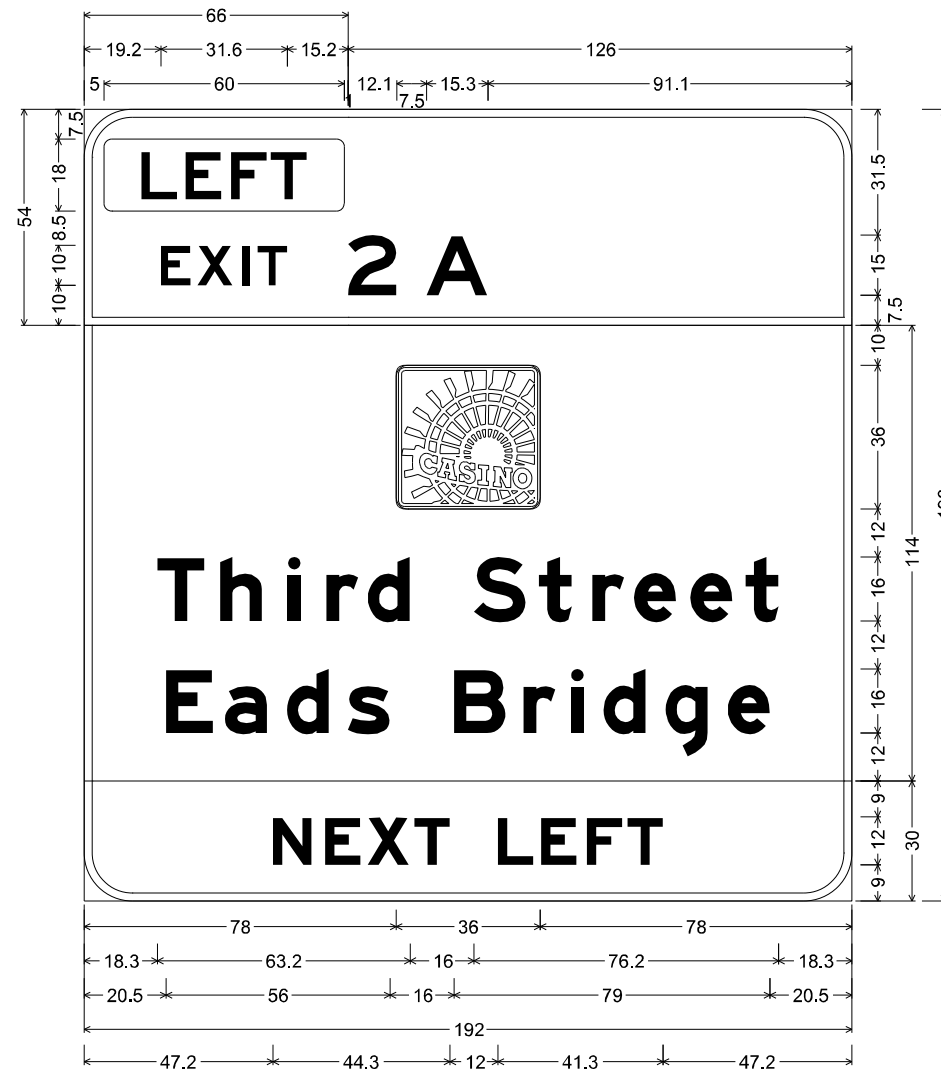
**STATE OF ILLINOIS
DEPARTMENT OF TRANSPORTATION**

**GUIDE SIGN PANEL DETAILS
FAI 70 (I-55 /64 /40)**

SCALE: N.T.S. SHEET 6 OF 9 SHEETS STA. NA TO STA. NA

F.A.J. RTE.	SECTION	COUNTY	TOTAL SHEETS	SHEET NO.
70	82-(1,2,3,4)SG	ST. CLAIR	30	18
CONTRACT NO. 76T56			ILLINOIS FED. AID PROJECT	

SIGN NUMBER: SB-TR-001-02



12.0" Radius, 2.0" Border, White on Green;
"EXIT", E 2K 120% spacing;

12.0" Radius, 2.0" Border, White on Green;
"2", E 2K; "A", E 2K;

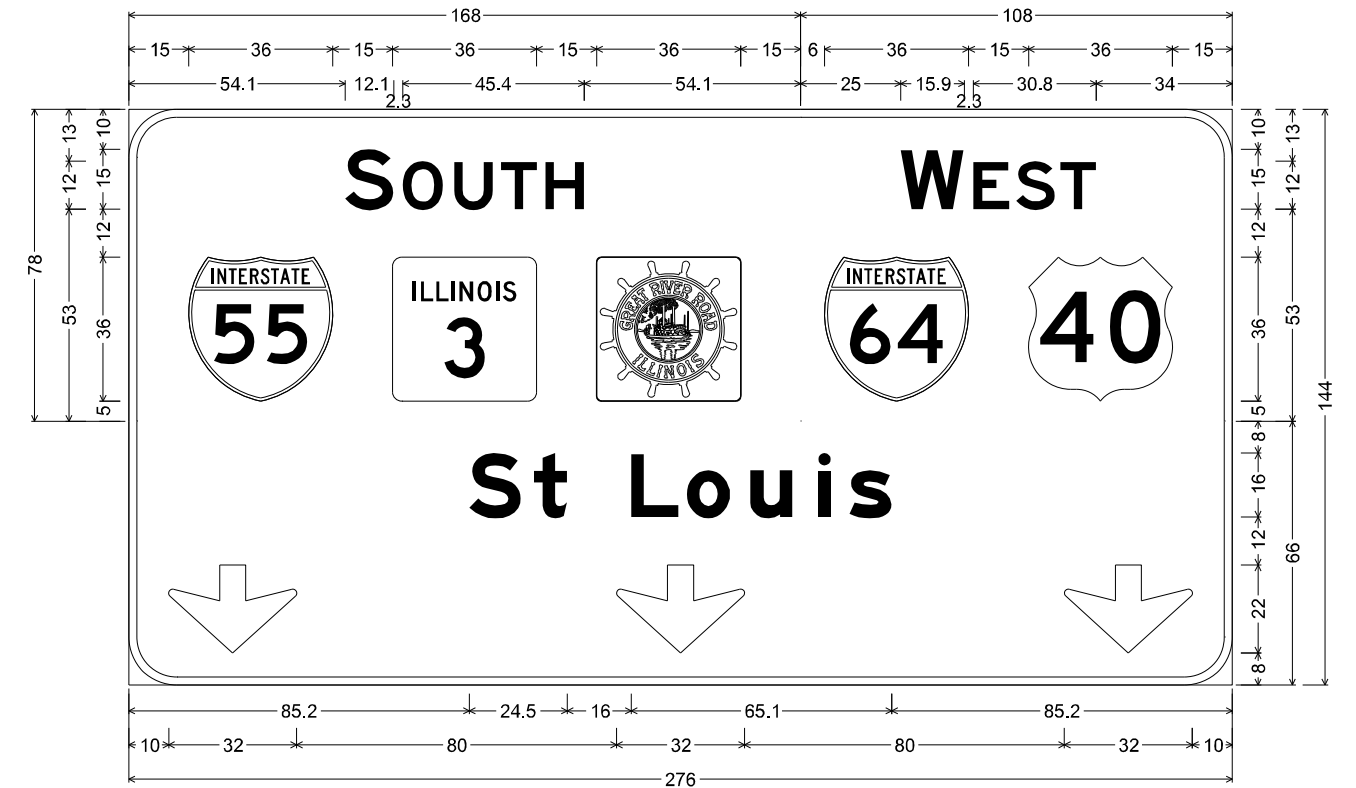
12.0" Radius, 2.0" Border, White on Green;
Rounded Rectangle 3.0" Radius; "Third Street", E Mod 2K;
"Eads Bridge", E Mod 2K;

12.0" Radius, 2.0" Border, Black on Yellow;
"NEXT LEFT", E Mod 2K;

Table of widths and spaces

5.0	60.0	127.0														
19.2	7.5	1.7	8.7	2.4	1.8	2.0	7.5	141.2								
66.0	12.1	7.5	15.3	91.1												
78.0	36.0	78.0														
18.3	11.9	3.8	10.6	6.4	3.2	6.4	8.0	2.4	10.5							
16.0	13.0	3.2	8.3	5.1	8.0	2.4	10.6	3.5	10.6	3.2	8.3	18.3				
20.5	11.8	2.9	10.6	4.9	10.6	4.6	10.6									
16.0	12.9	4.5	8.0	3.9	3.2	4.9	10.6	4.9	10.6	5.0	10.5	20.5				
47.2	9.7	3.4	8.9	1.7	10.4	1.3	8.9	12.0	8.9	1.9	8.9	2.5	8.9	1.3	8.9	47.2

SIGN NUMBER: SB-TR-001-03



12.0" Radius, 2.0" Border, White on Green;
"SOUTH", E 2K; Rounded Rectangle 1.0" Radius;

12.0" Radius, 2.0" Border, White on Green;
"WEST", E 2K;

12.0" Radius, 2.0" Border, White on Green;
"St Louis", E Mod 2K; Down Arrow 22.0" 270°; Down Arrow 22.0" 270°; Down Arrow 22.0" 270°;

Table of widths and spaces

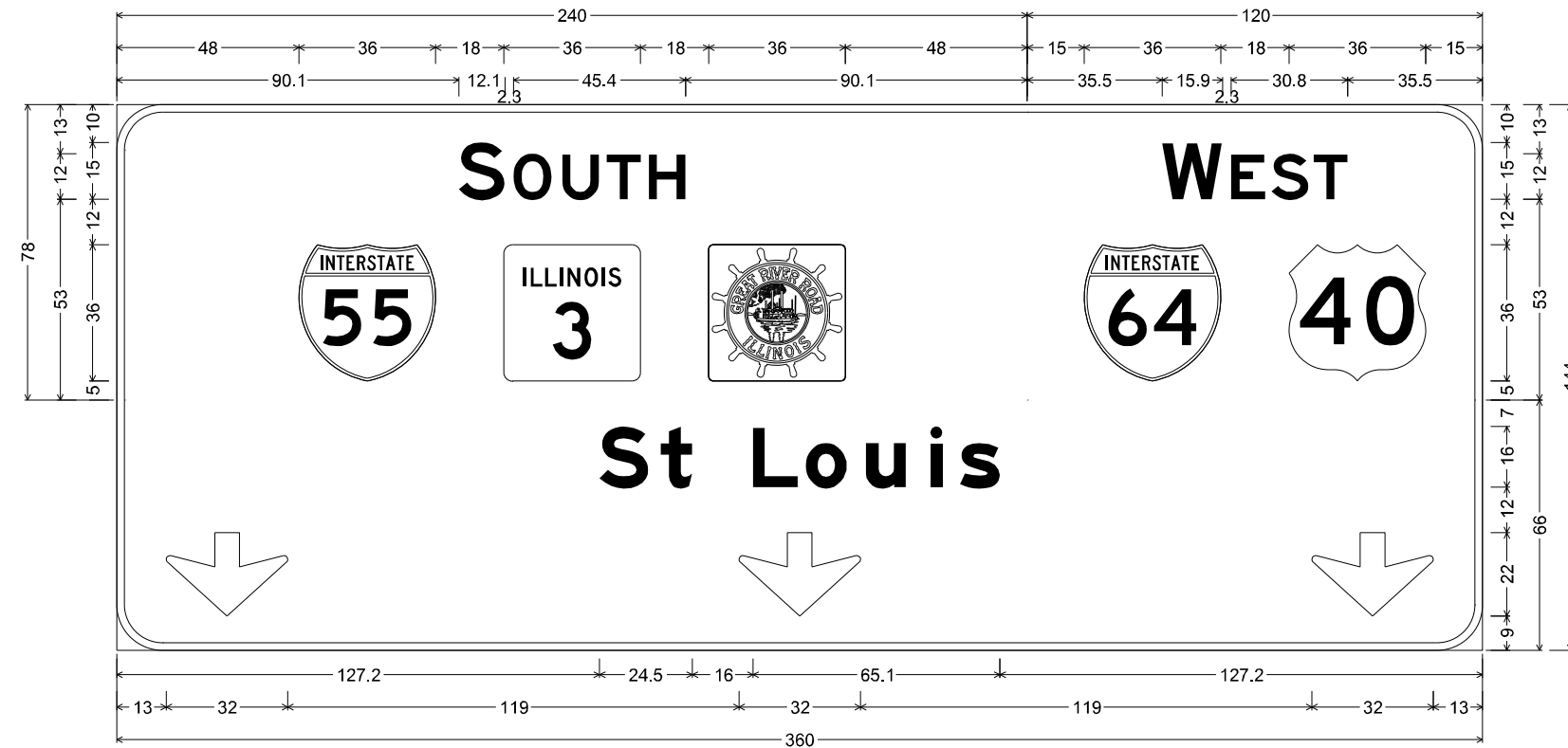
54.1	12.1	2.3	10.1	2.8	9.7	2.0	9.0	2.1	9.7	162.1				
15.0	36.0	15.0	36.0	15.0	36.0	123.0								
193.0	15.9	2.3	9.0	1.7	9.7	1.4	9.0	34.0						
174.0	36.0	15.0	36.0	15.0										
85.2	13.0	3.2	8.3	16.0	11.8	2.1	10.9	4.9	10.6	6.4	3.2	4.6	10.6	85.2
10.0	32.0	80.0	32.0	80.0	32.0	10.0								

NOTE
TYPE ZZ SHEETING SHALL BE USED FOR ALL GREEN SIGN PANELS.

MODEL: Default; FILE: 240120103RoadSigns\Drawings\Drawings\SB-TR-001-02.dwg; PROJECT: 2023\CH401\401\20103RoadSigns\Drawings\Drawings\SB-TR-001-02.dwg

SIGN NUMBER: SB-TR-003-02

SIGN NUMBER: SB-TR-003-03



12.0" Radius, 2.0" Border, White on Green;
"SOUTH", E 2K; Rounded Rectangle 1.0" Radius;

12.0" Radius, 2.0" Border, White on Green;
"WEST", E 2K;

12.0" Radius, 2.0" Border, White on Green;
"St Louis", E Mod 2K; Down Arrow 22.0" 270°; Down Arrow 22.0" 270°; Down Arrow 22.0" 270°;

Table of widths and spaces

S	O	U	T	H	90.1	12.1	2.3	10.1	2.8	9.7	2.0	9.0	2.1	9.7	210.1						
55	3				48.0	36.0	18.0	36.0	18.0	36.0	168.0										
W	E	S	T	275.5	15.9	2.3	9.0	1.7	9.7	1.4	9.0	35.5									
64	40	255.0	36.0	18.0	36.0	15.0															
S	t	L	o	u	i	s	127.2	13.0	3.2	8.3	16.0	11.8	2.1	10.9	4.9	10.6	6.4	3.2	4.6	10.6	127.2
↓	↓	↓	13.0	32.0	119.0	32.0	119.0	32.0	13.0												



12.0" Radius, 2.0" Border, White on Green;
"EXIT ", E 2K 120% spacing; "2", E Mod 2K; "C", E Mod 2K;

12.0" Radius, 2.0" Border, White on Green;
"ML King Bridge", E Mod 2K; "Downtown St Louis", E Mod 2K;

12.0" Radius, 2.0" Border, Black on Yellow;
"EXIT", E Mod 2K 140% spacing; Down Arrow 22.0" 270°; "ONLY", E Mod 2K;

Table of widths and spaces

E	X	I	T	2	C	176.6	7.5	1.7	8.7	2.4	1.8	2.0	7.5	15.0	12.2	7.5	12.1	15.0																		
M	L	K	i	n	g	B	r	i	d	g	e	37.7	14.9	4.5	11.8	16.0	13.1	3.6	3.2	6.4	10.5	5.0	10.5	16.0	13.0	4.5	8.0	3.8	3.2	5.0	10.5	5.0	10.6	4.9	10.6	37.7
D	o	w	n	t	o	w	n	S	t	12.1	13.0	3.3	10.9	3.2	16.3	4.7	10.5	4.7	8.3	3.7	10.9	3.2	16.3	4.6	10.6	16.0	12.9	3.2	8.4							
L	o	u	i	s	16.0	11.8	2.1	10.9	4.9	10.6	6.4	3.2	4.6	10.6	12.1																					
E	X	I	T	↓	O	N	L	Y	61.9	8.8	2.4	10.4	3.6	2.4	3.0	8.9	15.0	32.0	12.0	10.1	2.8	9.8	3.3	8.9	0.7	12.1	61.9									

NOTE

TYPE ZZ SHEETING SHALL BE USED FOR ALL GREEN SIGN PANELS.

MODEL: Default
 FILE: 240120103RoadSigns\Drawings\Drawings\003-02\003-02-03.dwg
 PROJECT: 2023\CH401\03\RoadSigns\Drawings\Drawings\003-02\003-02-03.dwg
 USER: eadrukrey

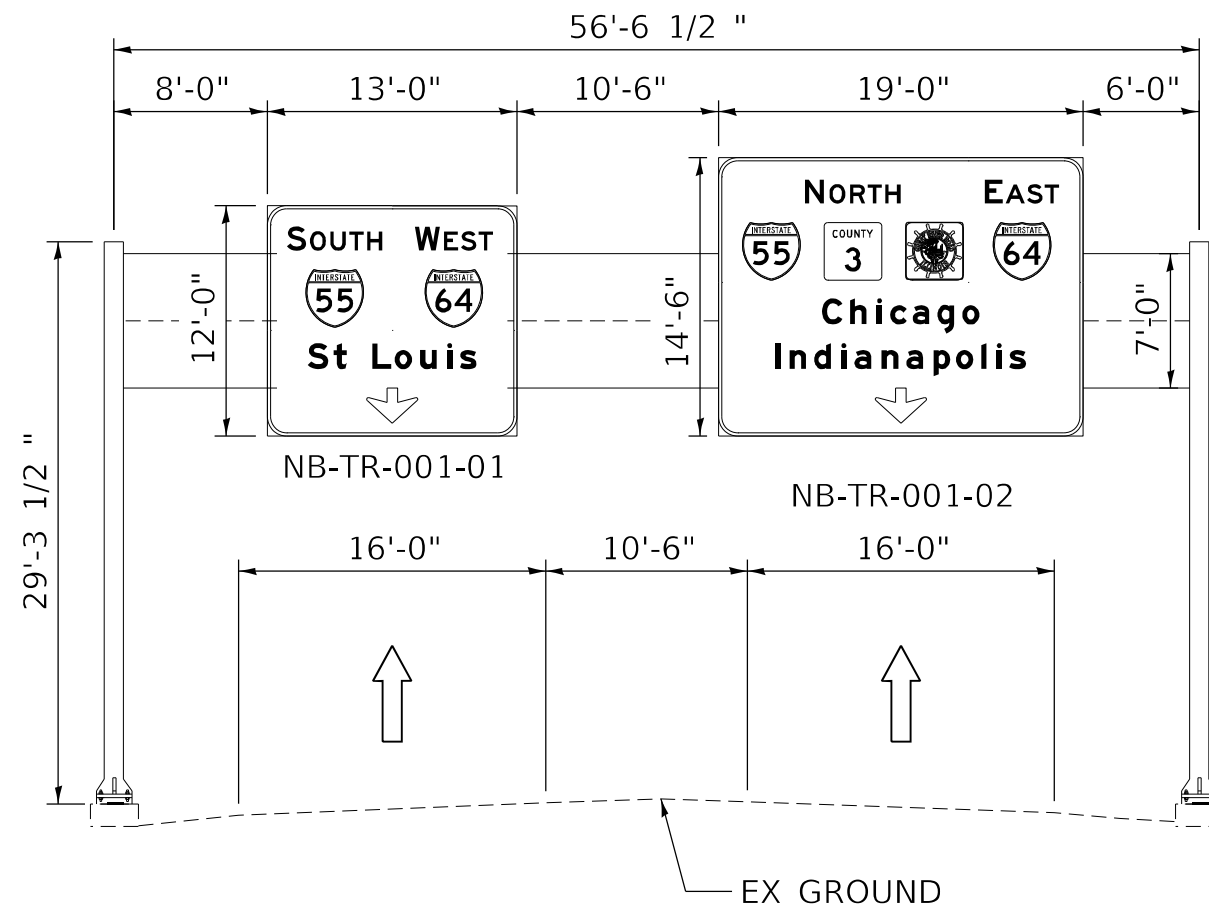


USER NAME = eadrukrey	DESIGNED - EAD	REVISED -
PLOT SCALE = 100,0000' / in.	DRAWN - MBM	REVISED -
PLOT DATE = 7/3/2024	CHECKED - CJS	REVISED -
	DATE - 07-01-2024	REVISED -

**STATE OF ILLINOIS
DEPARTMENT OF TRANSPORTATION**

GUIDE SIGN PANEL DETAILS			
FAI 70 (I-55 / 64 / 40)			
SCALE: N.T.S.	SHEET 9	OF 9	SHEETS
STA. NA	TO STA. NA		

F.A.I. RTE.	SECTION	COUNTY	TOTAL SHEETS	SHEET NO.
70	82-(1,2,3,4)SG	ST. CLAIR	30	21
ILLINOIS FED. AID PROJECT			CONTRACT NO. 76T56	



85082S003R009.6

NOTE

VERIFY VERTICAL CLEARANCES PRIOR TO PLACING NEW SIGN PANELS ON THE EXISTING SIGN TRUSS.

MODEL: Default
 FILE: 85082S003R009.6.dwg
 PROJECT: 2022\CH401\0401\200\Road\Sheets\085082S003R009.6.dwg
 USER: eadrukrey

TRANSYSTEMS

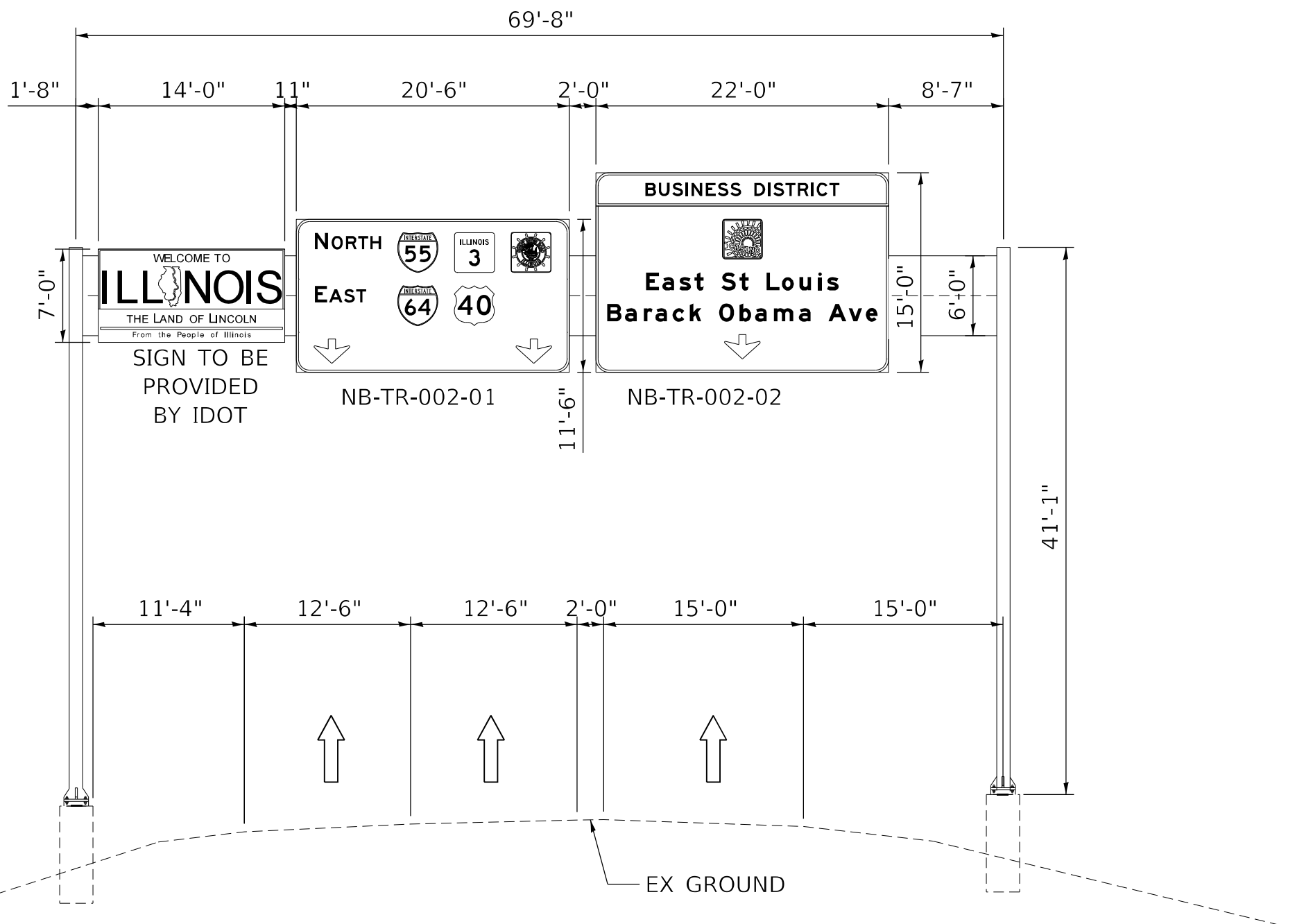
USER NAME = eadrukrey	DESIGNED - EAD	REVISED -
PLOT SCALE = 10,0000 * / in.	DRAWN - MBM	REVISED -
PLOT DATE = 7/3/2024	CHECKED - CJS	REVISED -
	DATE - 07-01-2024	REVISED -

**STATE OF ILLINOIS
DEPARTMENT OF TRANSPORTATION**

**GUIDE SIGN ELEVATION PLAN
FAI 70 (I-55 / 64 / 40)**

SCALE: N.T.S. SHEET 1 OF 7 SHEETS STA. NA TO STA. NA

F.A.I. RTE.	SECTION	COUNTY	TOTAL SHEETS	SHEET NO.
70	82-(1,2,3,4)SG	ST. CLAIR	30	22
ILLINOIS FED. AID PROJECT			CONTRACT NO. 76T56	



8S082I055R001.1

NOTE

VERIFY VERTICAL CLEARANCES PRIOR TO PLACING NEW SIGN PANELS ON THE EXISTING SIGN TRUSS.

MODEL: Default
 FILE: 8s082i055r001.dwg
 PROJECT: 2022\CH401\0401220102\Road\Sheets\082I055R001.dwg
 USER: mbm



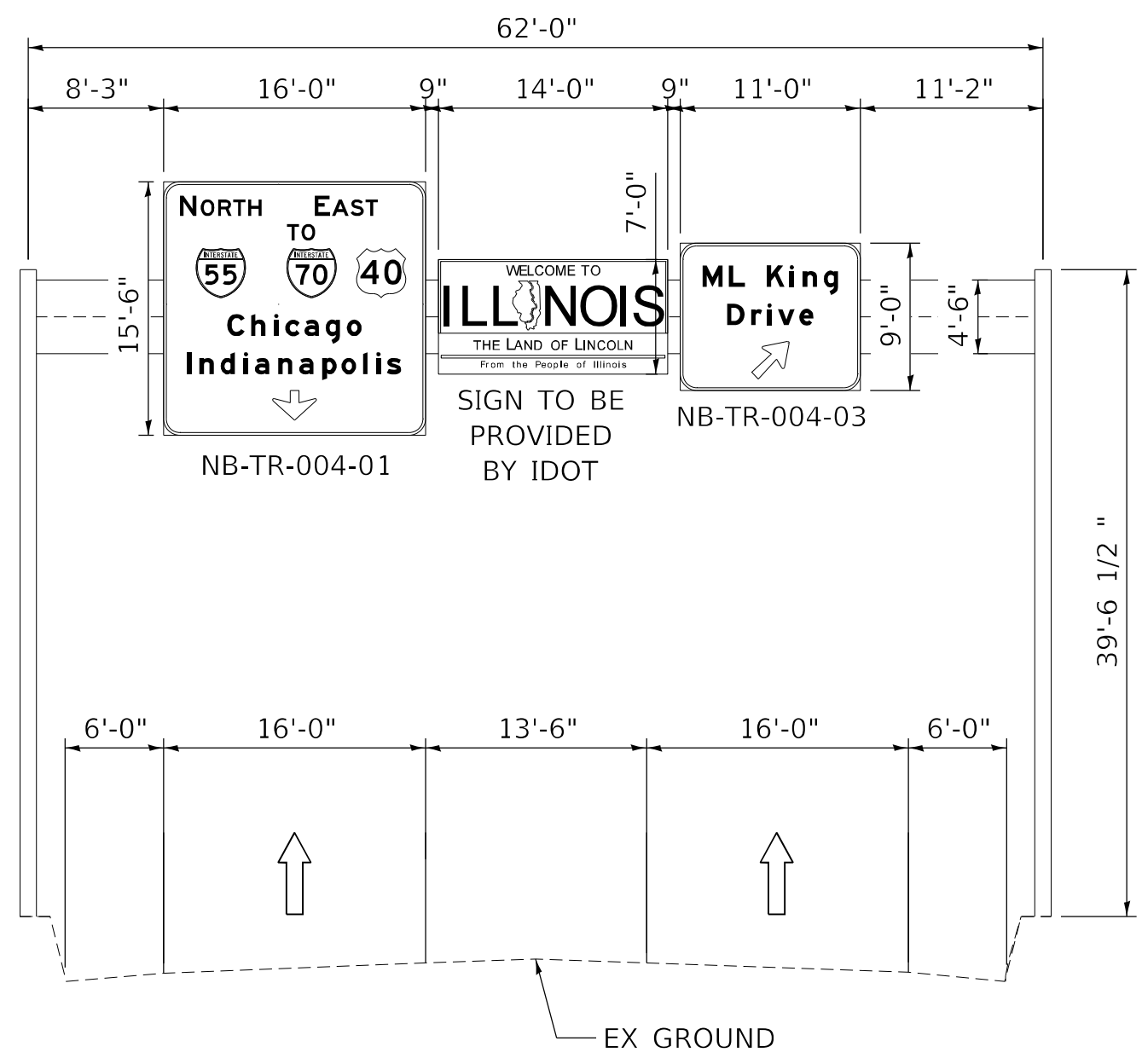
USER NAME = mbm	DESIGNED - EAD	REVISED -
PLOT SCALE = 10,0000 * / in.	DRAWN - MBM	REVISED -
PLOT DATE = 9/12/2024	CHECKED - CJS	REVISED -
	DATE - 07-01-2024	REVISED -

**STATE OF ILLINOIS
DEPARTMENT OF TRANSPORTATION**

**GUIDE SIGN ELEVATION PLAN
FAI 70 (I-55 / 64 / 40)**

SCALE: N.T.S. SHEET 2 OF 7 SHEETS STA. NA TO STA. NA

F.A.J. RTE.	SECTION	COUNTY	TOTAL SHEETS	SHEET NO.
70	82-(1,2,3,4)SG	ST. CLAIR	30	23
ILLINOIS FED. AID PROJECT			CONTRACT NO. 76T56	



8S082I055R001.7

NOTE

VERIFY VERTICAL CLEARANCES PRIOR TO PLACING NEW SIGN PANELS ON THE EXISTING SIGN TRUSS.

MODEL: Default
 FILE: 85082I055R001.dwg
 PROJECT: 2022\CH401\041\2701\02\Road\Sheets\085082I055R001.dwg
 USER: mbmcwhorter

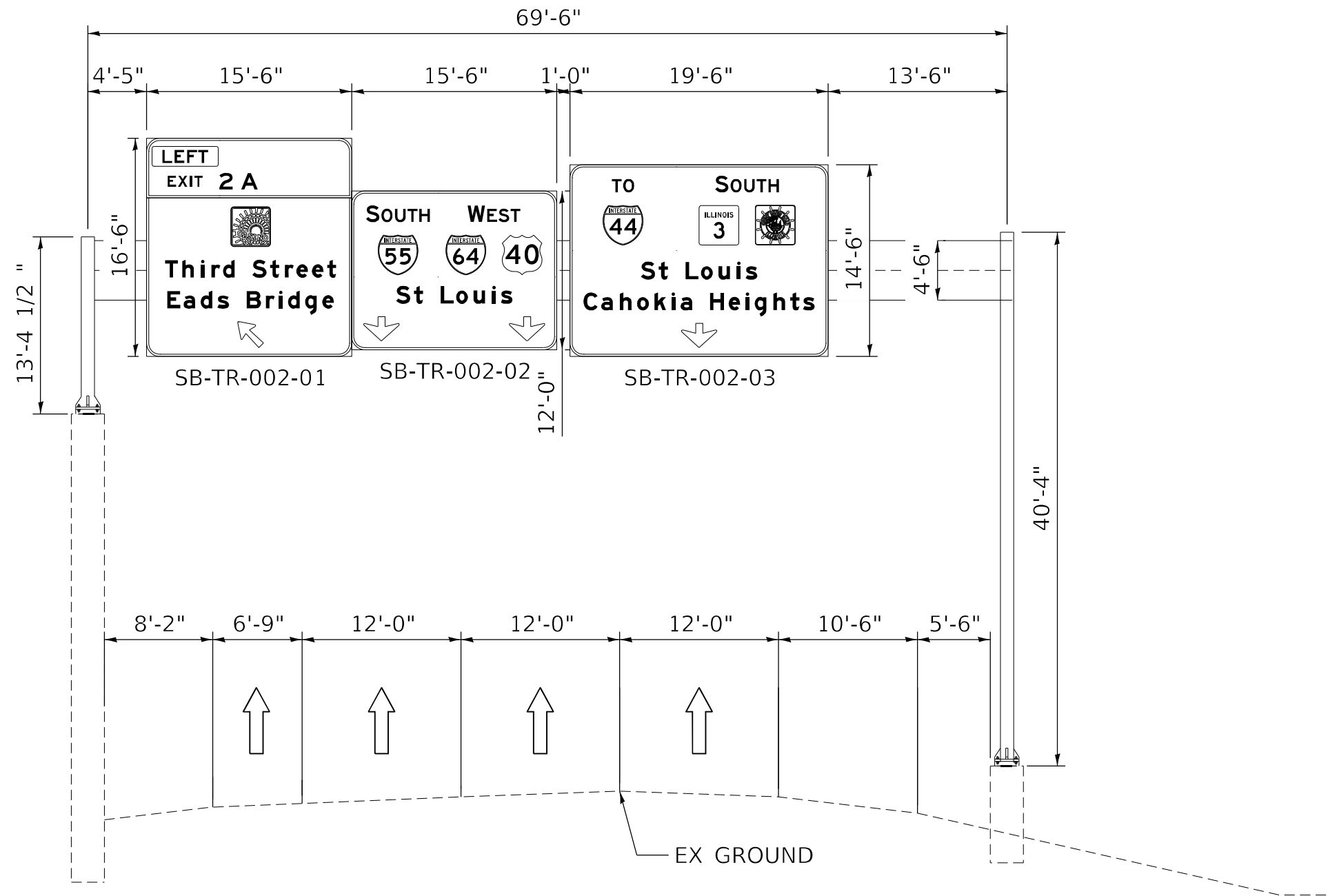


USER NAME = mbmcwhorter	DESIGNED - EAD	REVISED -
	DRAWN - MBM	REVISED -
PLOT SCALE = 10,0000 * / in.	CHECKED - CJS	REVISED -
PLOT DATE = 9/12/2024	DATE - 07-01-2024	REVISED -

STATE OF ILLINOIS
DEPARTMENT OF TRANSPORTATION

GUIDE SIGN ELEVATION PLAN
FAI 70 (I-55 /64 /40)
 SCALE: N.T.S. SHEET 4 OF 7 SHEETS STA. NA TO STA. NA

F.A.J. RTE.	SECTION	COUNTY	TOTAL SHEETS	SHEET NO.
70	82-(1,2,3,4)SG	ST. CLAIR	30	25
CONTRACT NO. 76T56			ILLINOIS FED. AID PROJECT	



85082I055L001.8

NOTE

VERIFY VERTICAL CLEARANCES PRIOR TO PLACING NEW SIGN PANELS ON THE EXISTING SIGN TRUSS.

LOW CLEARANCE AND ADVISORY SPEED SIGNS TO REMAIN IN PLACE

MODEL: Default
 FILE: \\mbm\c:\pwworking\transyscorp\pwworking\Documents\Projects_2022\CH401\401120102\Road\Sheets\085082I055L001.dwg
 USER: mbm

TRANSYSTEMS

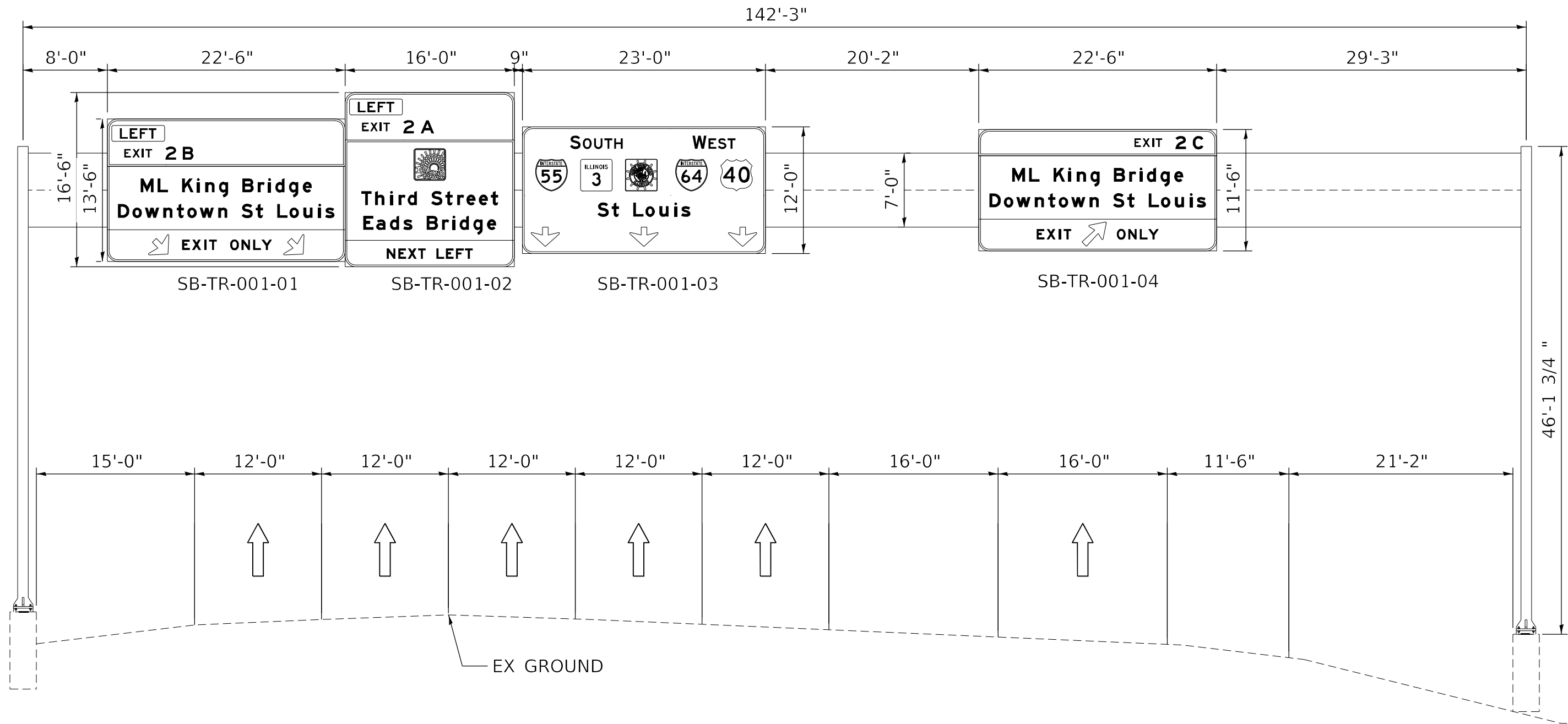
USER NAME = mbm\cwhorter	DESIGNED - EAD	REVISED -
PLOT SCALE = 10,0000 * / in.	DRAWN - MBM	REVISED -
PLOT DATE = 9/12/2024	CHECKED - CJS	REVISED -
	DATE - 07-01-2024	REVISED -

**STATE OF ILLINOIS
DEPARTMENT OF TRANSPORTATION**

**GUIDE SIGN ELEVATION PLAN
FAI 70 (I-55 / 64 / 40)**

SCALE: N.T.S. SHEET 5 OF 7 SHEETS STA. NA TO STA. NA

F.A.J. RTE.	SECTION	COUNTY	TOTAL SHEETS	SHEET NO.
70	82-(1,2,3,4)SG	ST. CLAIR	30	26
CONTRACT NO. 76T56				
ILLINOIS FED. AID PROJECT				



85082I055L002.1

NOTE

VERIFY VERTICAL CLEARANCES PRIOR TO PLACING NEW SIGN PANELS ON THE EXISTING SIGN TRUSS.

MODEL: Default
 FILE: 85082I055L002.1.dwg
 PROJECT: 2022\CH401\0401\200\Road\Signs\055L002\85082I055L002.dwg
 USER: mbmcwhorter

TRANSYSTEMS

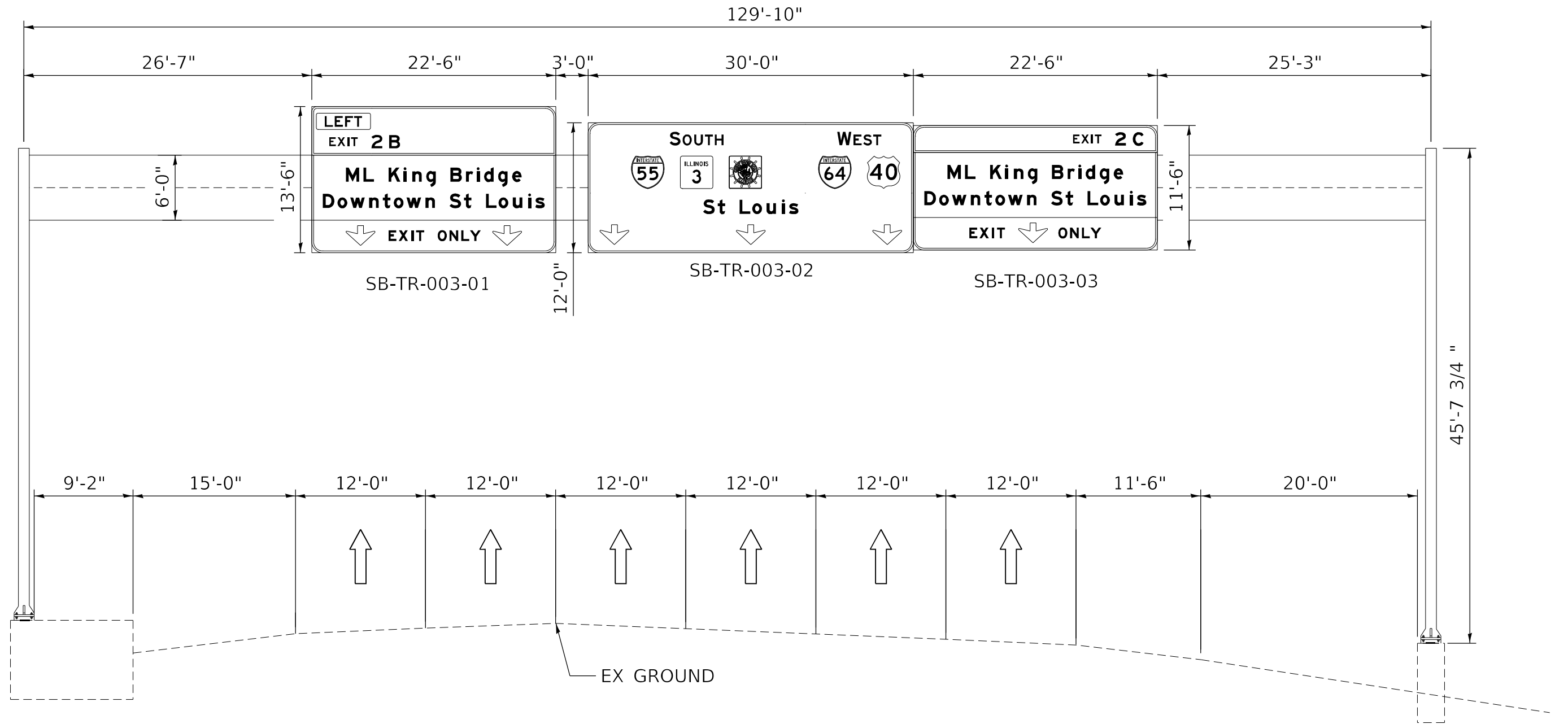
USER NAME = mbmcwhorter	DESIGNED - EAD	REVISED -
PLOT SCALE = 10,0000 * / in.	DRAWN - MBM	REVISED -
PLOT DATE = 9/12/2024	CHECKED - CJS	REVISED -
	DATE - 07-01-2024	REVISED -

**STATE OF ILLINOIS
DEPARTMENT OF TRANSPORTATION**

**GUIDE SIGN ELEVATION PLAN
FAI 70 (I-55 / 64 / 40)**

SCALE: N.T.S. SHEET 6 OF 7 SHEETS STA. NA TO STA. NA

F.A.I. RTE.	SECTION	COUNTY	TOTAL SHEETS	SHEET NO.
70	82-(1,2,3,4)SG	ST. CLAIR	30	27
CONTRACT NO. 76T56			ILLINOIS FED. AID PROJECT	



85082I055L002.4

NOTE

VERIFY VERTICAL CLEARANCES PRIOR TO PLACING NEW SIGN PANELS ON THE EXISTING SIGN TRUSS.

MODEL: Default
 FILE: \\mbm\c:\pwworking\transyscorp\pwworking\Documents\Projects\2022\CH401\401120102\Road\Sheets\085556-11-11-24\85082I055L002.dwg

TRANSYSTEMS

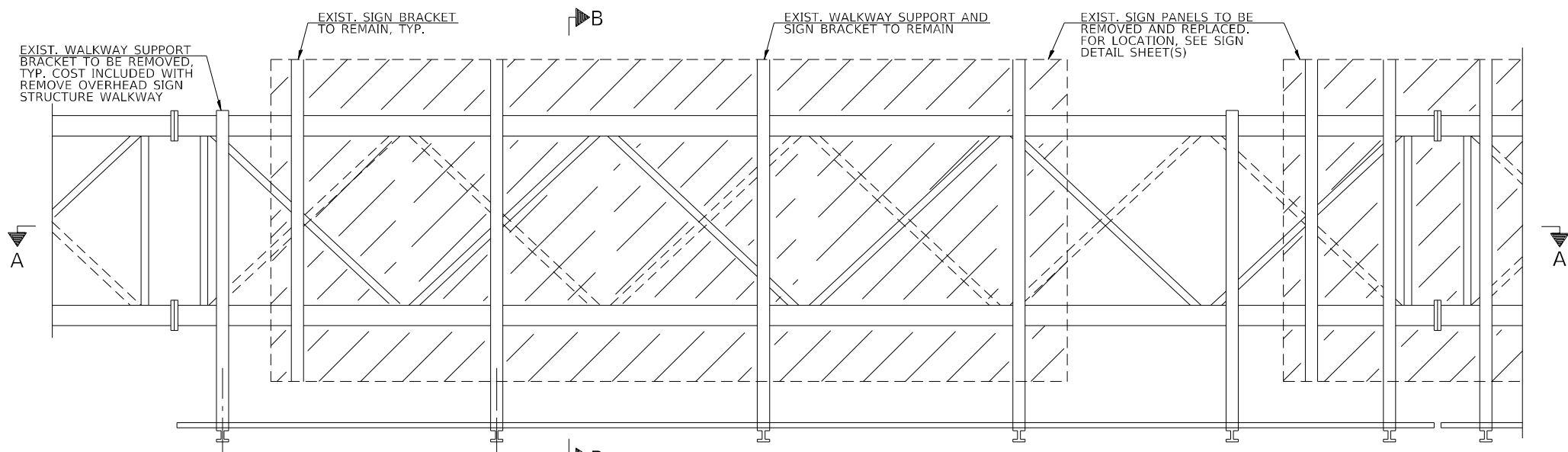
USER NAME = mibmcwhorter	DESIGNED - EAD	REVISED -
	DRAWN - MBM	REVISED -
PLOT SCALE = 10,0000 * / in.	CHECKED - CJS	REVISED -
PLOT DATE = 9/12/2024	DATE - 07-01-2024	REVISED -

**STATE OF ILLINOIS
DEPARTMENT OF TRANSPORTATION**

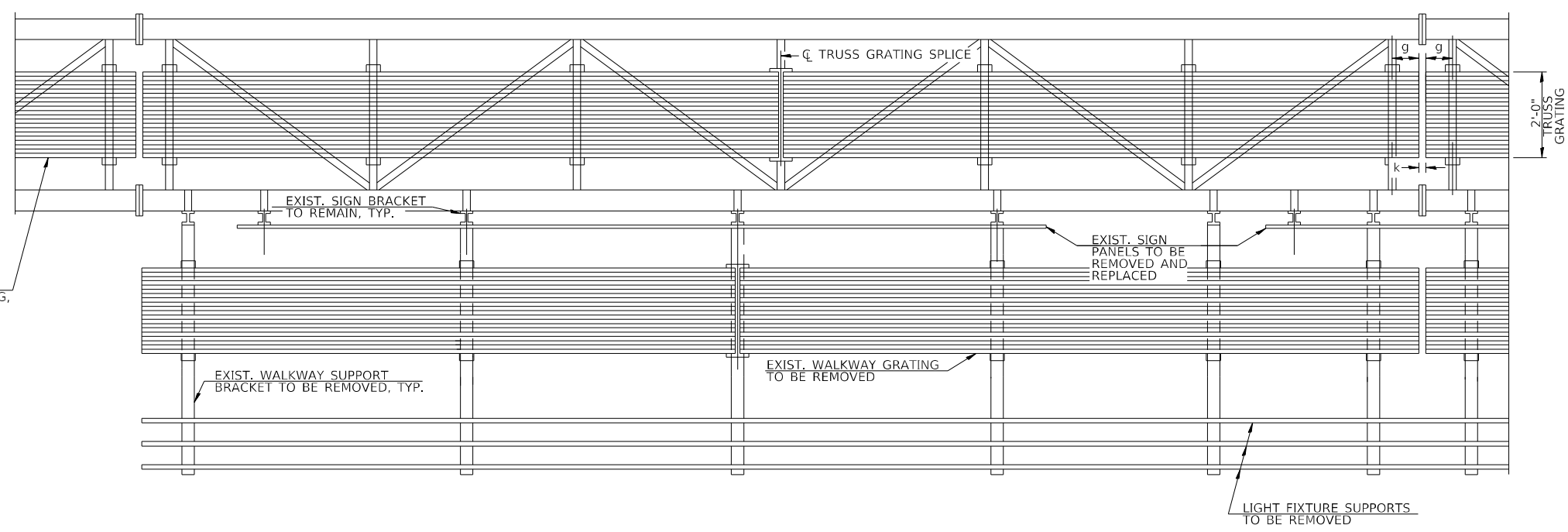
**GUIDE SIGN ELEVATION PLAN
FAI 70 (I-55 / 64 / 40)**

SCALE: N.T.S. SHEET 7 OF 7 SHEETS STA. NA TO STA. NA

F.A.I. RTE.	SECTION	COUNTY	TOTAL SHEETS	SHEET NO.
70	82-(1,2,3,4)SG	ST. CLAIR	30	28
CONTRACT NO. 76T56				
ILLINOIS FED. AID PROJECT				



TYPICAL FRONT ELEVATION
WITH LIGHTS OMITTED FOR CLARITY



SECTION A-A

STRUCTURE NUMBER	STATION	TRUSS GRATING LENGTHS (FT)
8S0821055R001.1	87+44	68
8S0821055R001.2	94+23	82
8S0821055L001.8	27+23	69.5

NOTES:
 g = 12" MAXIMUM, 4" MINIMUM (END OF WALKWAY GRATING TO ϕ OF NEAREST SUPPORT)
 k = 2" MAXIMUM GAP BETWEEN ADJACENT WALKWAY GRATING SECTIONS

FOR DETAIL T, SECTION B-B AND GRATING SPLICE DETAILS, SEE SHEET 30.

TRUSS GRATING TO FACILITATE INSPECTION SHALL RUN FULL LENGTH (CENTER TO CENTER OF SUPPORT FRAMES) $\pm 12"$ ON OVERHEAD TRUSSES.

TRUSS GRATING WIDTH DIMENSIONS ARE NOMINAL AND MAY VARY $\pm 1/2"$ BASED ON AVAILABLE STANDARD WIDTHS.

BILL OF MATERIAL

ITEM	UNIT	QUANTITY
OVERHEAD SIGN STRUCTURE WALKWAY, TYPE A	FOOT	220
REMOVE OVERHEAD SIGN STRUCTURE WALKWAY	FOOT	220

MODEL: Default
 FILE: I:\Users\jeffrey_ead\transyscorp\pww\1\Documents\Projects_2021\CH401\401_120101\Road\Sheets\08767556-Str-Walkway\Detail01



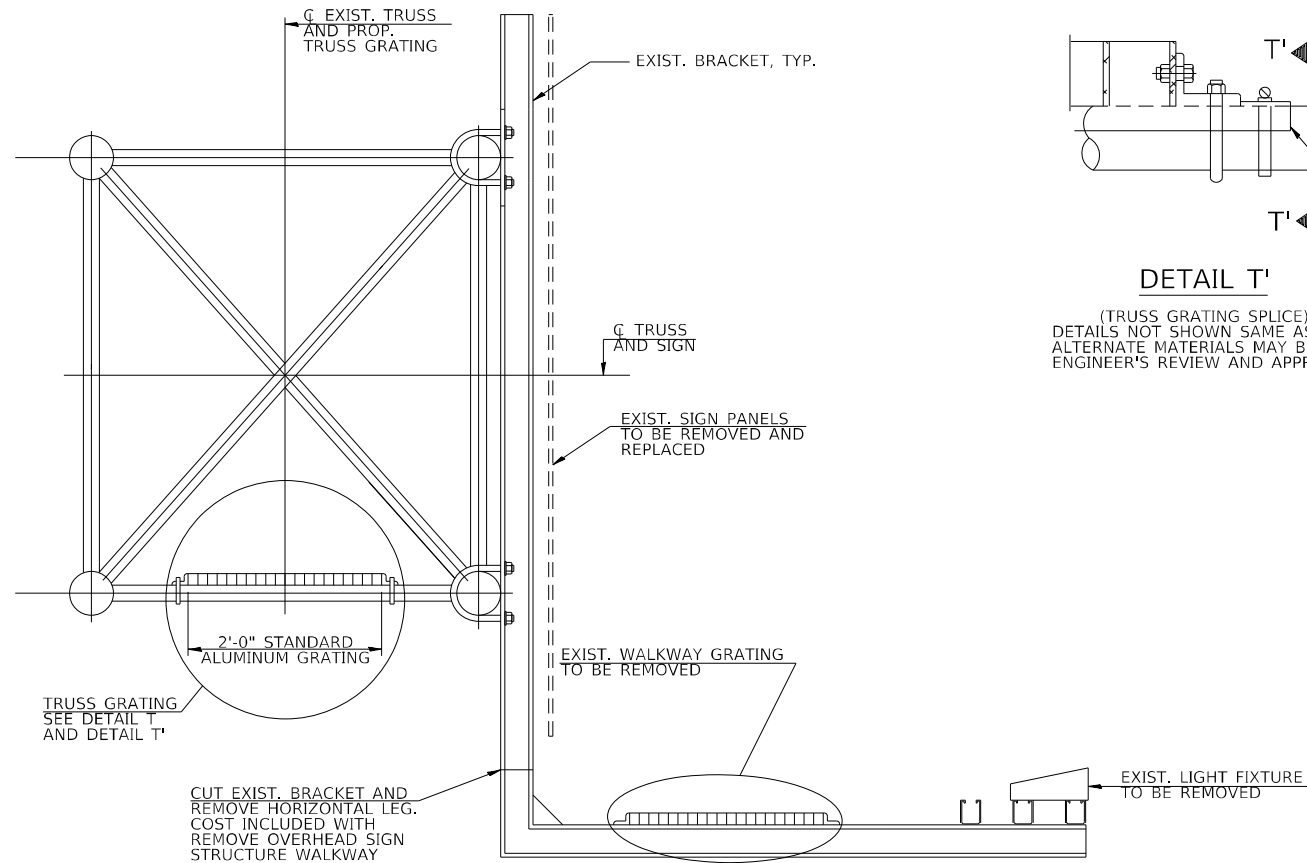
USER NAME = eadruckrey	DESIGNED - JE	REVISED -
PLOT SCALE = 100,0000' / in.	DRAWN - JE	REVISED -
PLOT DATE = 7/3/2024	CHECKED - MDS	REVISED -
	DATE - 07-01-2024	REVISED -

STATE OF ILLINOIS
DEPARTMENT OF TRANSPORTATION

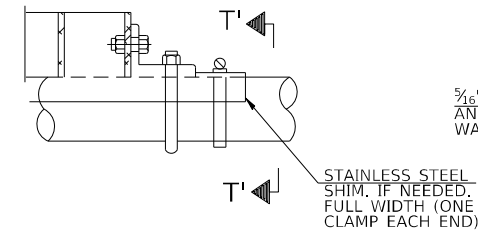
WALKWAY DETAILS
FAI 70 (I-55 / 64 / 40)

SCALE: N.T.S. SHEET 1 OF 2 SHEETS STA. 0+00 TO STA. 0+00

F.A.J RTE.	SECTION	COUNTY	TOTAL SHEETS	SHEET NO.
70	82-(1,2,3,4)SG	ST. CLAIR	30	29
CONTRACT NO. 76T56				
ILLINOIS FED. AID PROJECT				

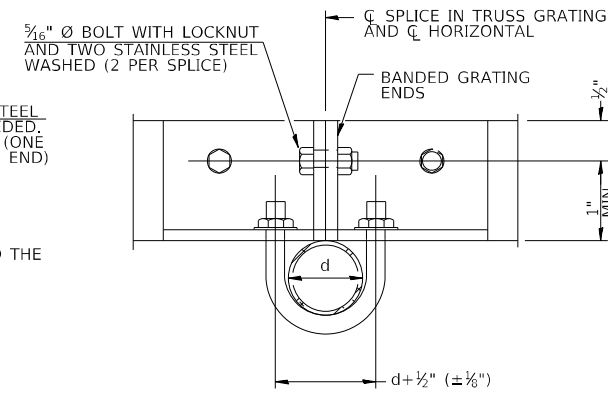


SECTION B-B

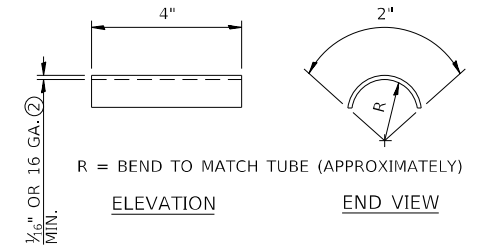


DETAIL T

(TRUSS GRATING SPLICE)
 DETAILS NOT SHOWN SAME AS DETAIL T.
 ALTERNATE MATERIALS MAY BE USED SUBJECT TO THE
 ENGINEER'S REVIEW AND APPROVAL.

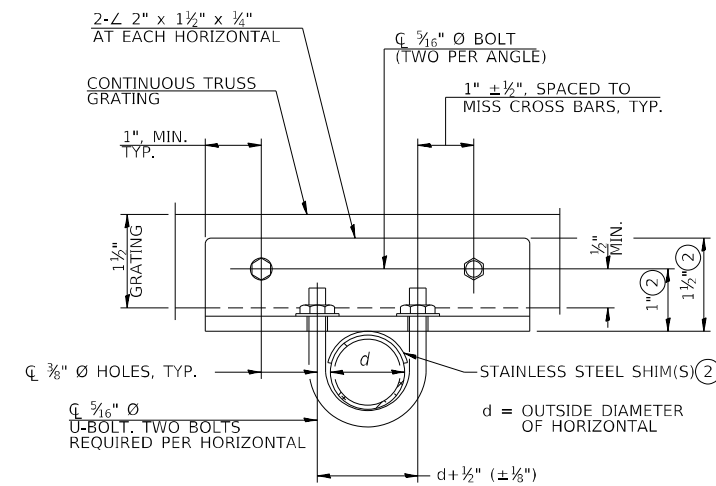


SECTION T'-T'



SHIM DETAIL

- ① DRILLING HOLES IN GRATING MAY BE DONE IN SHOP OR FIELD, BASED ON CONTRACTOR'S PREFERENCE AND SUBJECT TO ACCURATE ALIGNMENT.
- ② STAINLESS STEEL SHIMS SHALL BE PLACED AS SHOWN IN DETAIL T IF NEEDED TO COMPENSATE FOR ALIGNMENT VARIATIONS BETWEEN HORIZONTAL AND DIAGONAL PIPES BEYOND ADJUSTMENT PROVIDED BY ANGLES. THICKER SHIMS MAY BE USED SUBJECT TO SHIMS PERFORMING PROPERLY.
- ③ TUBE TO GRATING GAP MAY VARY FROM 0 TO 1/2". MAX. TO ALIGN WALKWAY. ALLOW FOR CAMBER, ETC.



SECTION T-T

SPECIFICATIONS FOR STANDARD ALUMINUM GRATING

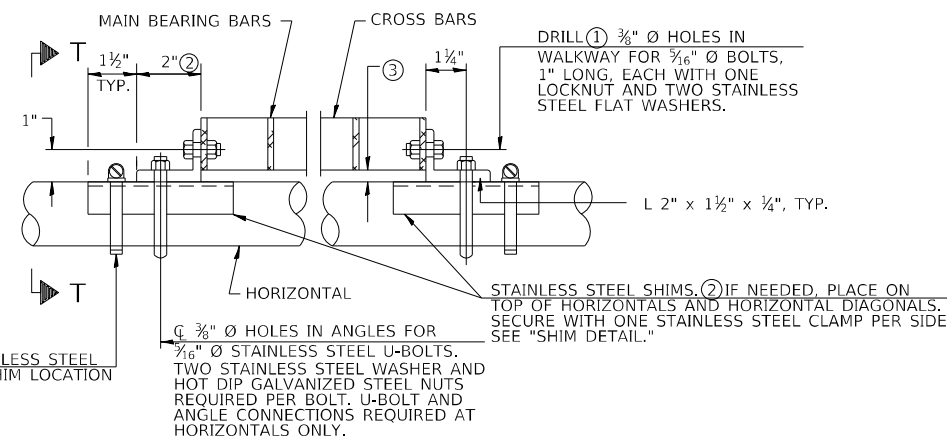
MAIN BEARING BARS SHALL BE 3/16" x 1 1/2" ON 1 3/16" CENTERS AND CONFORM TO ASTM B221 ALLOY 6061-T6.

CROSS BARS SHALL BE 3/16" x 1 1/2" ON 4" CENTERS AND CONFORM TO ASTM B221 ALLOY 6063-T5 OR 6061-T6

OR

ALUMINUM GRATING WITH MODIFIED "T" SECTIONS FOR MAIN BEARING BARS SHALL MEET THE FOLLOWING REQUIREMENTS:
 MAIN BARS SHALL CONFORM TO ASTM B221 ALLOY 6061-T6 AND HAVE A MINIMUM SECTION MODULUS EQUAL TO 0.0705 IN.³ PER BAR, A DEPTH OF 1 1/2", SPACED ON 1 3/16" CENTERS.

CROSS BARS SHALL CONFORM TO ASTM B221 ALLOY 6063-T5 OR T-42 AND SPACED ON 4" CENTERS.



DETAIL T

(CONTINUOUS TRUSS GRATING)

STRUCTURE NUMBER	STATION	d*
8S082I055R001.1	87+44	5"
8S082I055R001.2	94+23	5"
8S082I055L001.8	27+23	5 1/16"

* VERIFY IN FIELD

MODEL: Default
 FILE: \\nafe1-pw1\hsc\p101-ae\transys\corp\pww\1\Documents\Projects_2021\CH401\401120101\Road\Sheets\087565-ft-walkway\detail02

TRANSYSTEMS

USER NAME = eadruckrey	DESIGNED - JE	REVISED -
PLOT SCALE = 100,0000' / in.	DRAWN - JE	REVISED -
PLOT DATE = 7/1/2024	CHECKED - MDS	REVISED -
	DATE - 07-01-2024	REVISED -

**STATE OF ILLINOIS
 DEPARTMENT OF TRANSPORTATION**

**WALKWAY DETAILS
 FAI 70 (I-55 /64 /40)**

SCALE: N.T.S. SHEET 2 OF 2 SHEETS STA. 0+00 TO STA. 0+00

F.A.J. RTE.	SECTION	COUNTY	TOTAL SHEETS	SHEET NO.
70	82-(1,2,3,4)SG	ST. CLAIR	30	30
				CONTRACT NO. 76T56
ILLINOIS FED. AID PROJECT				