

STATE OF ILLINOIS  
DEPARTMENT OF TRANSPORTATION

F.A.P. RTE.	SECTION	COUNTY	TOTAL SHEETS	SHEET NO.
327	(16,16-1)RS	MARION	6	1
		ILLINOIS	CONTRACT NO. 76T75	

# PROPOSED HIGHWAY PLANS

FAP ROUTE 327 (US 50)  
SECTION (16,16-1)RS  
PROJECT: NHPP-FXDZ(069)  
ULTRA-THIN BONDED WEARING COURSE  
MARION COUNTY

C-98-111-24

FOR INDEX OF SHEETS, SEE SHEET NO. 2

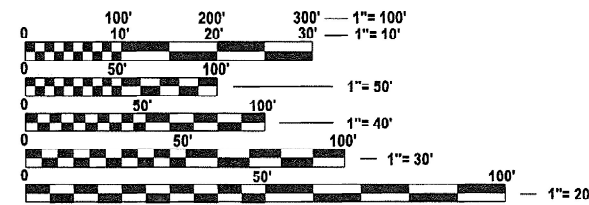
**LOCATION #1: TRAFFIC DATA**

LOCATION	US 50
2024 ADT	11200 (ACTUAL)
2044 ADT	13800 (ESTIMATED)
MU%	8.0
SU%	5.4

**LOCATION #2: TRAFFIC DATA**

LOCATION	US 50
2024 ADT	6800 (ACTUAL)
2044 ADT	8400 (ESTIMATED)
MU%	7.7
SU%	6.6

FUNCTIONAL CLASSIFICATION: OTHER PRINCIPAL ARTERIAL



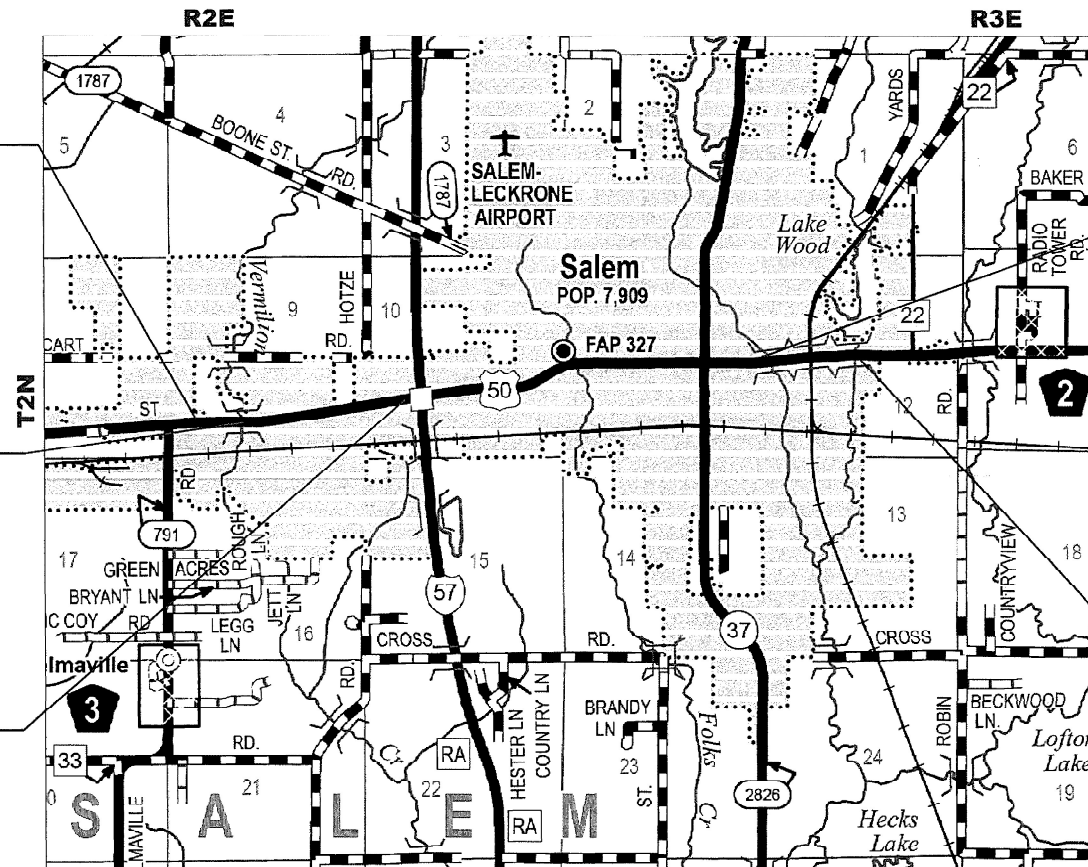
FULL SIZE PLANS HAVE BEEN PREPARED USING STANDARD ENGINEERING SCALES. REDUCED SIZED PLANS WILL NOT CONFORM TO STANDARD SCALES. IN MAKING MEASUREMENTS ON REDUCED PLANS, THE ABOVE SCALES MAY BE USED.

J.U.L.I.E.  
JOINT UTILITY LOCATION INFORMATION FOR EXCAVATION  
1-800-892-0123  
OR 811

**BEGIN LOCATION #1  
(EXISTING JOINT)**  
STA. 347+40  
LAT: 38.622366  
LONG: -88.993968

**BRIDGE OMISSION:**  
STA. 362+95 TO  
STA. 363+67  
S.N. 061-0081, 72'

**END LOCATION #1  
(EXISTING JOINT)**  
STA. 390+83  
LAT: 38.623522  
LONG: -88.978793



NOT TO SCALE

GROSS LENGTH = 5,478 FT. = 1.03 MILE  
NET LENGTH = 5,406 FT. = 1.02 MILE

**END LOCATION #2  
(EXISTING JOINT)**  
STA. 1247+42  
LAT: 38.627364  
LONG: -88.937689

**BEGIN LOCATION #2  
(EXISTING JOINT)**  
STA. 1258+37  
LAT: 38.627607  
LONG: -88.933874

PROJECT ENGINEER: BILLIE OWEN  
PROJECT MANAGER: MEIWU AN

CONTRACT NO. 76T75

STATE OF ILLINOIS  
DEPARTMENT OF TRANSPORTATION

SUBMITTED Aug 12 20 24  
*[Signature]*  
REGIONAL ENGINEER

October 4, 2024  
*[Signature]*  
ENGINEER OF DESIGN AND ENVIRONMENT

October 4, 2024  
*[Signature]*  
DIRECTOR OF HIGHWAYS PROJECT IMPLEMENTATION

PRINTED BY THE AUTHORITY  
OF THE STATE OF ILLINOIS

**INDEX OF SHEETS**

1. COVER SHEET
2. INDEX OF SHEETS, HIGHWAY STANDARDS, GENERAL NOTES AND COMMITMENTS
3. SUMMARY OF QUANTITIES
4. TYPICAL SECTION
5. SCHEDULE OF QUANTITIES
6. LOCATION MAP & DETAIL SHEET

**HIGHWAY STANDARDS**

000001-08	STANDARDS SYMBOLS ABBREVIATIONS & PATTERNS
001001-02	AREAS OF REINFORCEMENT BARS
001006	DECIMAL OF INCH & FOOT
701006-05	OFF ROAD MOVING OPERATIONS, 2L, 2W, 15" TO 24" FROM PAVEMENT EDGE
701101-05	OFF ROAD OPERATIONS, MULTILANE, 15" TO 24" FROM PAVEMENT EDGE
701301-04	LANE CLOSURE, 2 LANE, 2 WAY, SHORT TIME OPERATIONS
701311-03	LANE CLOSURE 2 LANE, 2 WAY, SLOW MOVING OPERATION, DAY ONLY
701501-06	URBAN LANE CLOSURE, 2L, 2W, UNDIVIDED
701602-10	URBAN LANE CLOSURE, MULTILANE, 2W WITH BIDIRECTIONAL LEFT TURN LANE
701701-10	URBAN LANE CLOSURE, MULTILANE INTERSECTION
701901-09	TRAFFIC CONTROL DEVICES
780001-05	TYPICAL PAVEMENT MARKINGS
781001-04	TYPICAL APPLICATION RAISED REFLECTION PAVEMENT MARKERS

**GENERAL NOTES**

1. UTILITIES KNOWN TO HAVE FACILITIES WITHIN THE PROJECT AREAS

		AERIAL	BURIED
AMEREN ILLINOIS	(GAS & ELECTRIC)	X	X
AT&T ILLINOIS	(COMMUNICATIONS)	X	X
CHARTER COMMUNICATIONS, INC	(CABLE TV)	X	X
COUNTRYMARK COOPERATIVE, LLP	(PIPELINE)		X
METRO	(COMMUNICATIONS)	X	X
CITY OF SALEM	(WATER, SANITARY SEWER)		X
CITY OF SALEM	(GAS)		X
TRI-COUNTY ELECTRIC COOPERATIVE, INC.	(ELECTRIC)	X	X
WABASH COMMUNICATIONS	(COMMUNICATIONS)	X	X
WINDSTREAM KDL, INC.	(COMMUNICATIONS)	X	X

2. NO SURVEY WAS PREFORMED FOR THIS PROJECT AND THE PLANS WERE CREATED USING MICROFLIM AND FIELD MEASUREMENTS.
3. THE RESIDENT ENGINEER SHALL VERIFY THE EXISTENCE OF HIGHWAY LIGHTING, INTELLIGENT TRANSPORTATION SYSTEMS (I.T.S.) UTILITIES, AND/OR ELECTRICAL CABLES ASSOCIATED WITH TRAFFIC SIGNALS WITHIN THE PROJECT LIMITS. IF ANY OF THESE EXIST WITHIN THE PROJECT LIMITS, AND IF THESE ITEMS REQUIRE LOCATING, THE CONTRACTOR SHALL BE DIRECTED TO DO SO ACCORDING TO SECTION 803 OF THE STANDARD SPECIFICATIONS. THIS WORK SHALL BE PAID FOR ACCORDING TO ARTICLE 109.04 OF THE STANDARD SPECIFICATIONS.
4. ALL TURF AREAS DISTURBED BY THE CONTRACTOR SHALL BE SEEDED WITH THE APPROPRIATE EROSION CONTROL, AS DIRECTED BY THE ENGINEER, AT THE CONTRACTOR'S EXPENSE.
5. THE PROPOSED PAVEMENT MARKING SHALL MATCH THE LOCATIONS OF THE EXISTING PAVEMENT MARKING, AS DIRECTED BY THE ENGINEER.
6. TWO CHANGEABLE MESSAGE SIGNS SHALL BE REQUIRED FOR THIS PROJECT. IT SHALL BE PLACED 2 WEEKS PRIOR TO ANY LANE CLOSURE AND SHALL REMAIN UP FOR DURATION OF THE PROJECT. THE CHANGEABLE MESSAGE SIGNS SHALL BE PLACED ALONG US 50 OR AT THE DIRECTION OF THE ENGINEER.
7. NO OVERNIGHT LANE CLOSURE WILL BE ALLOWED AT LOCATION #2.
8. THE RAISED REFLECTIVE PAVEMENT MARKERS SHALL NOT BE PLACED IN THE SAME LOCATION AS THEY WERE PREVIOUSLY INSTALLED.

**MIXTURE REQUIREMENTS**

ROUTE	FAP 327 (US 50)
SECTION	(16,16-1)PP
COUNTY	MARION
CONTRACT	76T75

DESCRIPTION	ULTRA-THIN BONDED WEARING COURSE OF US 50 FROM (L1) 0.1 MILES EAST OF SELMAVILLE RD. TO 0.2 MILES EAST OF BALDRIDGE LN & (L2) 0.1 MILES WEST OF WEYMEYER AVE TO 0.1 MILES WEST OF LACKEY ST.
-------------	----------------------------------------------------------------------------------------------------------------------------------------------------------------------------------------------

ADT (CONSTRUCTION YR.):	11200
MU%	8
SU%	6.6
20 YR, ESAL'S	6.43

MIXTURE USE	ULTRA-THIN BWC
AC/PG	
DESIGN AIR VOIDS	
MIX COMPOSTION (Gradation)	IL 9.5 UTB
FRICITION AGG	MIXTURE "E"
QUALITY MGMT PROGRAM	
MatTranDev Required?	

PLAN QUANTITIES FOR HOT-MIX-ASPHALT ITEMS ARE CALCULATED USING A UNIT WEIGHT OF 112 LB/SQ YD/IN.

**COMMITMENTS**

NONE

MODEL: General Notes (Sheet)  
FILE NAME: c:\pwworking\dmiller\ra1016174\16174\16174-16175-sht-general.dgn

USER NAME = rahshun.miller	DESIGNED -	REVISED -
	DRAWN -	REVISED -
	CHECKED -	REVISED -
PLOT DATE = 8/7/2024	DATE -	REVISED -

**STATE OF ILLINOIS  
DEPARTMENT OF TRANSPORTATION**

**INDEX OF SHEETS, HIGHWAY STANDARDS, GENERAL NOTES,  
MIXTURE REQUIREMENTS, COMMITMENTS**

SCALE: SHEET 1 OF 1 SHEETS STA. TO STA.

F.A.P. RTE.	SECTION	COUNTY	TOTAL SHEETS	SHEET NO.
327	(16,16-1)RS	MARION	6	2
CONTRACT NO. 76T75				
ILLINOIS FED. AID PROJECT				

CODE NO.	ITEM	UNIT	TOTAL QUANTITY	CONSTR. CODE		
				80% FED	20% STATE	
				ROADWAY		
				0005	URBAN	
40600250	RAPID SETTING POLYMER MODIFIED EMULSION	POUND	49192	49192		
40600990	TEMPORARY RAMP	SQ YD	278	278		
67000400	ENGINEER'S FIELD OFFICE, TYPE A	CAL MO	3	3		
67100100	MOBILIZATION	L SUM	1	1		
70102620	TRAFFIC CONTROL AND PROTECTION, STANDARD 701501	L SUM	1	1		
70102632	TRAFFIC CONTROL AND PROTECTION, STANDARD 701602	L SUM	1	1		
70102635	TRAFFIC CONTROL AND PROTECTION, STANDARD 701701	L SUM	1	1		
70107025	CHANGEABLE MESSAGE SIGN	CAL DA	160	160		
70300100	SHORT TERM PAVEMENT MARKING	FOOT	2166	2166		
70300150	SHORT TERM PAVEMENT MARKING REMOVAL	SQ FT	963	963		
70300211	TEMPORARY PAVEMENT MARKING LETTERS AND SYMBOLS - PAINT	SQ FT	353	353		
70300241	TEMPORARY PAVEMENT MARKING - LINE 6"- PAINT	FOOT	23744	23744		
70300281	TEMPORARY PAVEMENT MARKING - LINE 24"- PAINT	FOOT	78	78		
* 78000100	THERMOPLASTIC PAVEMENT MARKING - LETTERS AND SYMBOLS	SQ FT	353	353		

\* SPECIALTY ITEM

CODE NO.	ITEM	UNIT	TOTAL QUANTITY	CONSTR. CODE		
				80% FED	20% STATE	
				ROADWAY		
				0005	URBAN	
* 78000400	THERMOPLASTIC PAVEMENT MARKING - LINE 6"	FOOT	23744	23744		
* 78000650	THERMOPLASTIC PAVEMENT MARKING - LINE 24"	FOOT	78	78		
* 78100100	RAISED REFLECTIVE PAVEMENT MARKER	EACH	353	353		
78300200	RAISED REFLECTIVE PAVEMENT MARKER REMOVAL	EACH	353	353		
78300201	PAVEMENT MARKING REMOVAL - GRINDING	SQ FT	12264	12264		
Ø Z0076600	TRAINEES	HOUR	500	500		
X0300032	ULTRA-THIN BONDED WEARING COURSE, IL-9.5 UTB, MIX "E"	SQ YD	39041	39041		
Ø Z0076604	TRAINEES TRAINING PROGRAM GRADUATE	HOUR	500	500		
X4406806	PORTLAND CEMENT CONCRETE SURFACE REMOVAL 3/4"	SQ YD	39041	39041		

Ø 0042

MODEL: SQQ (Sheet)  
FILE NAME: c:\pwworkspace\millereng\1016174\0876775-shi-sq.dgn

REV - MS

USER NAME = rahshun.miller	DESIGNED -	REVISED -	STATE OF ILLINOIS DEPARTMENT OF TRANSPORTATION	SUMMARY OF QUANTITIES				F.A.P. RTE.	SECTION	COUNTY	TOTAL SHEETS	SHEET NO.
	DRAWN -	REVISED -		327	(16,16-1)RS	MARION	6	3				
	CHECKED -	REVISED -						CONTRACT NO. 76T75				
PLOT DATE = 8/7/2024	DATE -	REVISED -		SCALE:	SHEET 1	OF 1	SHEETS	STA.	TO STA.	ILLINOIS   FED. AID PROJECT		





PAVEMENT MARKING SCHEDULE																
STATION		LENGTH	THERMOPLASTIC/TEMPORARY PAVEMENT MARKINGS								PAVEMENT MARKING REMOVAL-GRINDING	SHORT TERM PAVEMENT MARKING	SHORT TERM PAVEMENT MARKING REMOVAL			
			LETTER & SYMBOLS	WHITE 6"			YELLOW 6"		WHITE 24"							
				SOLID	TURN LANE	SKIP-DASH	SKIP-DASH	LANE LINE	STOP BAR							
STA.	TO	STA.	FEET	SQFT	FEET	FEET	FEET	FEET	FEET	FEET	SQFT	FEET	SQFT			
<b>LOCATION #1</b>																
347+40	TO	361+06	1366.0	73.5	2732.0		683.0	683.0	2732.0		3488.5	620.9	276.0			
361+06	TO	362+95	189.0	73.5	378.0		94.5	94.5	378.0		546.0	85.9	38.2			
362+95	TO	363+67	72.0													
<b>BRIDGE OMISSION</b>																
363+67	TO	390+83	2716.0	205.8	5432.0	199.0	1358.0	1358.0	5432.0	78.0	7134.3	1259.7	559.9			
<b>LOCATION #2</b>																
1247+42	TO	1258+37	1095.0						2190.0		1095.0	199.1	88.5			
<b>TOTAL:</b>				<b>353</b>			<b>8542.0</b>	<b>199</b>	<b>2135.5</b>	<b>2135.5</b>	<b>10732.0</b>		<b>78</b>	<b>12264</b>	<b>2166</b>	<b>963</b>
							<b>23744</b>									

RAISED REFLECTIVE PAVEMENT MARKERS						
STA	TO	STA	LENGTH	AMBER	CRYSTAL	RAISED REFLECTIVE PAVEMENT MARKER REMOVAL
				2WAY	1WAY	
			FEET	EACH	EACH	EACH
<b>LOCATION #1</b>						
347+40	TO	361+06	1366	34	68	102
361+06	TO	362+95	189	5	9	14
362+95	TO	363+67	72			
<b>BRIDGE OMISSION</b>						
363+67	TO	390+83	2716	68	141	209
<b>LOCATION #2</b>						
1247+42	TO	1258+37	1095	27		27
<b>SUB-TOTAL:</b>				<b>134</b>	<b>219</b>	
<b>TOTAL:</b>				<b>353</b>		<b>353</b>

BUTT JOINT/TEMPORARY RAMP SCHEDULE				
STATION		LENGTH	WIDTH	TEMPORARY RAMPS
		FEET	FEET	SQ YD
<b>LOCATION #1</b>				
BEGINNING	347+40	15	62	57.4
BRIDGE	362+95	15	62	57.4
BRIDGE	363+67	15	62	57.4
ENDING	390+83	15	62	57.4
<b>LOCATION #2</b>				0.0
BEGINNING	1247+42	15	26	24.1
ENDING	1258+37	15	26	24.1
<b>TOTAL:</b>				<b>278</b>

RESURFACING SCHEDULE						
STATION		LENGTH	WIDTH	RAPID SETTING POLYMER MODIFIED EMULSION	ULTRA-THIN BONDED WEARING COURSE, IL-9.5 UTB, MIX "E", 3/4"	PCC SURFACE REMOVAL 3/4"
		FEET	FEET	POUND	SQ YD	SQ YD
<b>LOCATION #1</b>						
347+40	TO	361+06	1366	62	11856.9	9410.2
361+06	TO	362+95	189	82	2169.7	1722.0
362+95	TO	363+67	72			
<b>BRIDGE OMISSION</b>						
363+67	TO	390+83	2716	82	31179.7	24745.8
<b>LOCATION #2</b>						
1247+42	TO	1258+37	1095	26	3985.8	3163.3
<b>TOTAL:</b>				<b>49192</b>	<b>39041</b>	<b>39041</b>

MODEL: Schedules (Sheet)  
 FILE NAME: c:\p\work\pavement\marrg\1016174\0876175-sht-schedule.dgn

USER NAME = rahshun.miller	DESIGNED -	REVISED -
	DRAWN -	REVISED -
	CHECKED -	REVISED -
PLOT DATE = 8/7/2024	DATE -	REVISED -

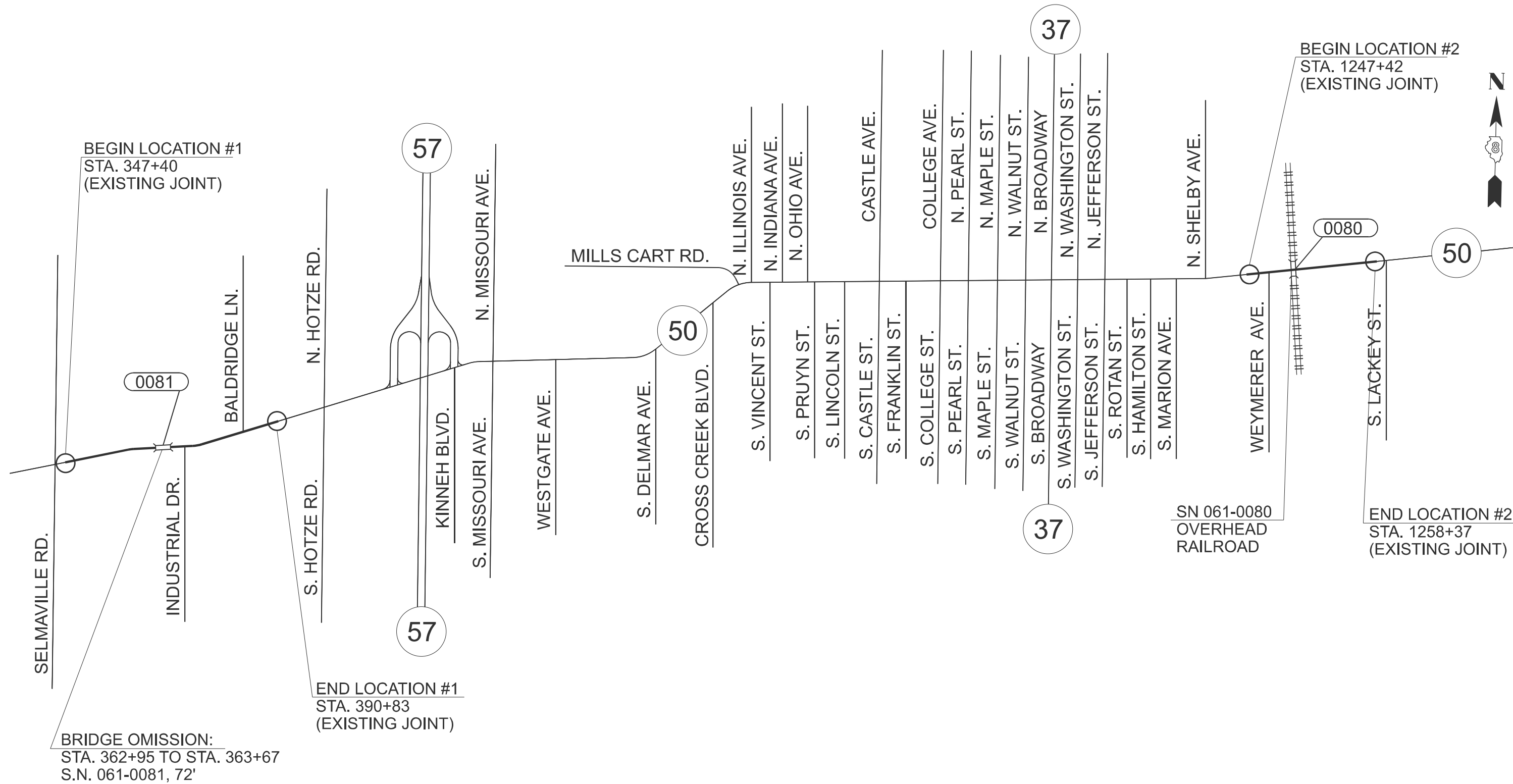
STATE OF ILLINOIS  
DEPARTMENT OF TRANSPORTATION

SCHEDULE OF QUANTITIES

SCALE: SHEET 1 OF 1 SHEETS STA. TO STA.

F.A.P. RTE.	SECTION	COUNTY	TOTAL SHEETS	SHEET NO.
327	(16,16-1)RS	MARION	6	5
CONTRACT NO. 76T75				
ILLINOIS FED. AID PROJECT				

MODEL: Location Map (Sheet)  
 FILE NAME: c:\p\work\pav\miller\rajd1016174\06175-sht-detail.dgn



BRIDGE OMISSION:  
 STA. 362+95 TO STA. 363+67  
 S.N. 061-0081, 72'

END LOCATION #1  
 STA. 390+83  
 (EXISTING JOINT)

BEGIN LOCATION #2  
 STA. 1247+42  
 (EXISTING JOINT)

END LOCATION #2  
 STA. 1258+37  
 (EXISTING JOINT)

USER NAME = rahshun.miller	DESIGNED -	REVISED -
	DRAWN -	REVISED -
	CHECKED -	REVISED -
PLOT DATE = 8/7/2024	DATE -	REVISED -

**STATE OF ILLINOIS  
 DEPARTMENT OF TRANSPORTATION**

**LOCATION MAP**

SCALE: 50 SHEET 1 OF 1 SHEETS STA. TO STA.

F.A.P. RTE.	SECTION	COUNTY	TOTAL SHEETS	SHEET NO.
327	(16,16-1)RS	MARION	6	6
CONTRACT NO. 76175				
ILLINOIS FED. AID PROJECT				