

STATE OF ILLINOIS
DEPARTMENT OF TRANSPORTATION

F.A.P. RTE.	SECTION	COUNTY	TOTAL SHEETS	SHEET NO.
	(101,102,103,104,119)PP	MADISON	7	1
		ILLINOIS	CONTRACT NO. 76U19	

F.A.P 002, F.A.U. 9105

D-98-098-24



LOCATION OF SECTION INDICATED THIS: -

**PROPOSED
HIGHWAY PLANS**

**FAP ROUTE 2, FAU 9105 (IL 003)
SECTION (101,102,103,104,119)PP
FULL DEPTH PATCHING
MADISON COUNTY**

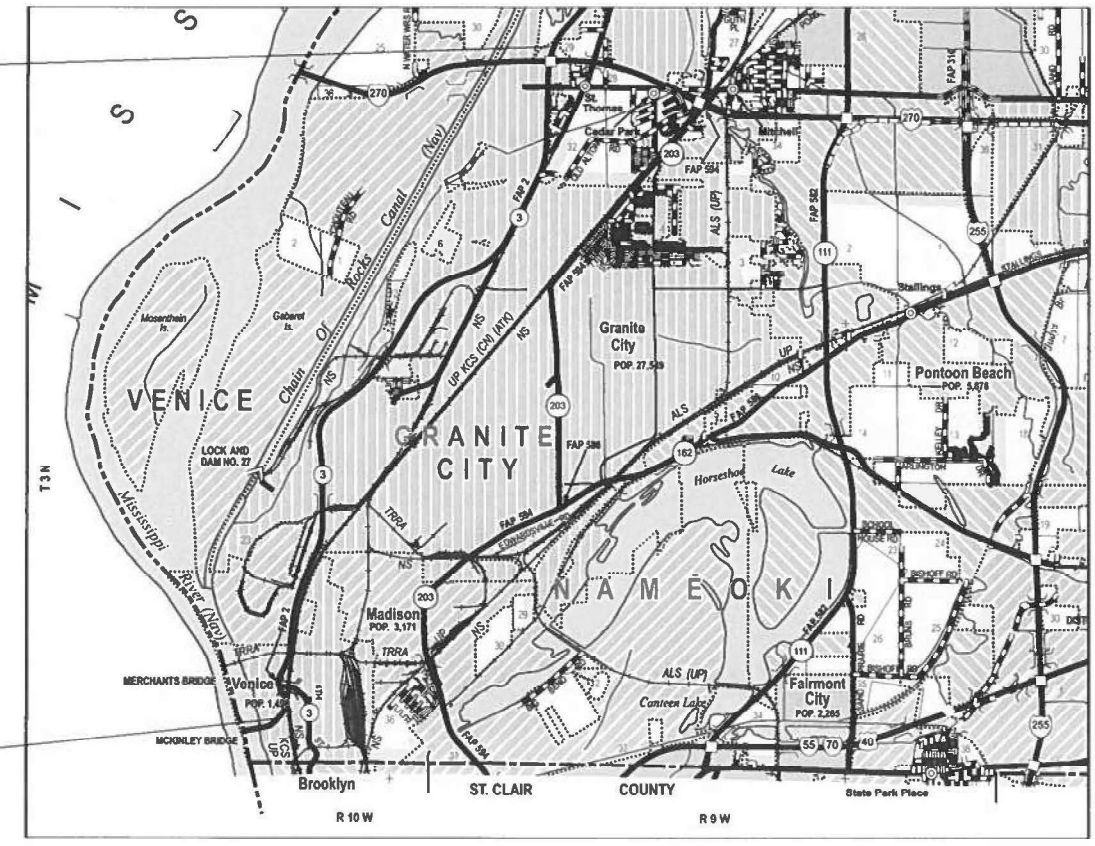
C-98-185-24

FOR INDEX OF SHEETS, SEE SHEET NO. 2

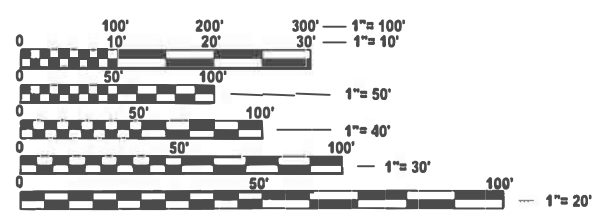
TRAFFIC DATA

MCKINLEY BRIDGE TO 4TH ST.	
LOCATION	IL 003
2024 ADT	14400
2044 ADT	16000
SU%	7.5%
MU%	9.4%
4TH ST. TO 19TH ST.	
LOCATION	IL 003
2024 ADT	12100
2044 ADT	13400
SU%	6.9%
MU%	11.3%
19TH ST. TO CHAIN OF ROCKS RD	
LOCATION	IL 003
2024 ADT	14600
2044 ADT	16300
SU%	6.3%
MU%	11.6%
CHAIN OF ROCKS RD TO 270 ENT. RAMP	
LOCATION	IL 003
2024 ADT	11900
2044 ADT	13200
SU%	8.2%
MU%	10.2%

END PROJECT
M.P. 8.25
LAT: 38.77072
LONG: -90.12119



BEGIN PROJECT
M.P. 0.00
LAT: 38.66604
LONG: -90.17695



FULL SIZE PLANS HAVE BEEN PREPARED USING STANDARD ENGINEERING SCALES. REDUCED SIZED PLANS WILL NOT CONFORM TO STANDARD SCALES. IN MAKING MEASUREMENTS ON REDUCED PLANS, THE ABOVE SCALES MAY BE USED.

J.U.L.I.E.
JOINT UTILITY LOCATION INFORMATION FOR EXCAVATION
1-800-892-0123
OR 811

PROJECT ENGINEER BILLIE OWEN
PROJECT MANAGER MICHAEL BERG

CONTRACT NO. 76U19

GROSS LENGTH = 43,560 FT. = 8.25 MILE
NET LENGTH = 43,560 FT. = 8.25 MILE

STATE OF ILLINOIS
DEPARTMENT OF TRANSPORTATION

SUBMITTED Aug 27, 2024
[Signature]
REGIONAL ENGINEER

October 4, 2024
[Signature]
ENGINEER OF DESIGN AND ENVIRONMENT

October 4, 2024
[Signature]
DIRECTOR OF HIGHWAYS PROJECT IMPLEMENTATION

PRINTED BY THE AUTHORITY
OF THE STATE OF ILLINOIS

INDEX OF SHEETS

- 1 COVER SHEET
- 2 INDEX OF SHEETS, HIGHWAY STANDARDS, GENERAL NOTES, MIXTURE REQUIREMENTS & COMMITMENTS
- 3 SUMMARY OF QUANTITIES
- 4 TYPICAL SECTIONS
- 5-6 SCHEDULE OF QUANTITIES
- 7 LOCATION MAP

HIGHWAY STANDARDS

- 000001-08 STANDARD SYMBOLS, ABBREVIATIONS AND PATTERNS
- 001001-02 AREAS OF REINFORCEMENT BARS
- 001006 DECIMAL OF AN INCH AND OF A FOOT
- 442101-09 CLASS B PATCHES
- 701101-05 OFF-ROAD OPERATIONS, MULTILANE, 15' (4.5M) TO 24" (600 MM) FROM THE PAVEMENT EDGE
- 701421-08 LANE CLOSURE, MULTILANE, DAY OPERATIONS ONLY, FOR SPEEDS ≥ 45 MPH TO 55 MPH
- 701422-10 LANE CLOSURE, MULTILANE, FOR SPEEDS ≥ 45 MPH TO 55 MPH
- 701426-09 LANE CLOSURE, MULTILANE, INTERMITTENT OR MOVING OPERATION, FOR SPEEDS ≥ 45 MPH
- 701701-10 URBAN LANE CLOSURE, MULTILANE INTERSECTION
- 701901-09 TRAFFIC CONTROL DEVICES
- 780001-05 TYPICAL PAVEMENT MARKINGS
- 420001-10 PAVEMENT JOINTS
- 420701-03 PAVEMENT WELDED WIRE REINFORCEMENT

GENERAL NOTES

- 1. UTILITIES KNOWN TO HAVE FACILITIES WITHIN THE PROJECT AREA ARE AS FOLLOWS:

	AERIAL	BURIED
AMEREN ILLINOIS (GAS & ELECTRIC)	X	X
AT&T ILLINOIS (COMMUNICATIONS)	X	X
BLUEBIRD NETWORK (COMMUNICATIONS)	X	X
BUCKEYE PARTNERS L.P. WOOD RIVER PIPELINE (PIPELINE)		X
CHARTER COMMUNICATIONS, INC. (CABLE)	X	X
CLEARWAVE COMMUNICATIONS (COMMUNICATIONS)	X	X
CONSOLIDATED COMMUNICATIONS (COMMUNICATIONS)	X	X
EVERSTREAM GLC HOLDING COMPANY LLC (COMMUNICATIONS)	X	X
EXPLORER PIPELINE COMPANY (PIPELINE)		X
CITY OF GRANITE CITY (SANITARY SEWER)		X
ILLINOIS AMERICAN WATER COMPANY (WATER, SANITARY SEWER)		X
LEVEL 3 COMMUNICATIONS, LLC (COMMUNICATIONS)		X
CITY OF MADISON (SANITARY SEWER)		X
MADISON COUNTY (SANITARY SEWER)		X
VERIZON BUSINESS (COMMUNICATIONS)	X	X
METRO EAST SANITARY DISTRICT (SANITARY SEWER)		X
MITCHELL PUBLIC WATER DISTRICT (WATER)		X
SHO-ME TECHNOLOGIES (COMMUNICATIONS)	X	X
SPIRE NGL (PIPELINE)		X
SPRINT (COMMUNICATIONS)	X	X
WINDSTREAM KDL, INC. (COMMUNICATIONS)	X	X
ZAYO GROUP LLC (COMMUNICATIONS)	X	X

- 2. NO SURVEY WAS PERFORMED FOR THIS PROJECT AND THE PLANS WERE CREATED USING MICROFILM.
- 3. THE PROPOSED PAVEMENT MARKING SHALL MATCH THE LOCATIONS OF THE EXISTING PAVEMENT MARKING, AS DIRECTED BY THE ENGINEER.

- 4. FOUR CHANGEABLE MESSAGE SIGNS SHALL BE REQUIRED FOR THIS PROJECT. THEY SHALL BE PLACED 2 WEEKS PRIOR TO ANY LANE CLOSURES. THE CHANGEABLE MESSAGE SIGNS SHALL BE PLACED AT THE DIRECTION OF THE ENGINEER.
- 5. ALL BRIDGES WITHIN THE PROJECT LIMITS SHALL BE OMITTED FROM PATCHING.
- 6. THE DEPARTMENT STRONGLY ENCOURAGES THE PRIME CONTRACTOR AND THEIR APPROVED SUB-CONTRACTORS TO HIRE MINORITY, WOMEN AND DISADVANTAGED INDIVIDUALS FROM ITS FEDERALLY FUNDED HIGHWAY CONSTRUCTION CAREERS TRAINING PROGRAM (HCCTP) TO HELP MEET WORKFORCE AND TRAINEE GOALS. THIS PROGRAM IS TRAINING MINORITIES, WOMEN AND DISADVANTAGED INDIVIDUALS IN HIGHWAY CONSTRUCTION-RELATED SKILLS, E.G., MATH FOR THE TRADES, JOB READINESS, TECHNICAL SKILLS COURSEWORK (CARPENTRY, CONCRETE FLATWORK, BLUEPRINT READING, SITE PLANS, SITE WORK, TOOLS USE, ETC.) AND OSHA 10 HOUR CERTIFICATION, TO PREPARE THEM FOR A CAREER IN THE HIGHWAY CONSTRUCTION TRADES. GRADUATES ARE WELL-TRAINED AND READY TO BECOME PRODUCTIVE ENTRY-LEVEL CONSTRUCTION WORKERS. CONTACT THE DISTRICT 8 EEO OFFICE AT 618-346-3360 AND/OR THE HCCTP COORDINATOR AT 618-874-6528 TO LEARN MORE ABOUT THE PROGRAM AND FOR ASSISTANCE IN MEETING WORKFORCE AND TRAINEE GOALS.
- 7. THE RESIDENT ENGINEER SHALL VERIFY THE EXISTENCE OF HIGHWAY LIGHTING, INTELLIGENT TRANSPORTATION SYSTEMS (I.T.S.) UTILITIES, AND/OR ELECTRICAL CABLES ASSOCIATED WITH TRAFFIC SIGNALS WITHIN THE PROJECT LIMITS. IF ANY OF THESE EXIST WITHIN THE PROJECT LIMITS, AND IF THESE ITEMS REQUIRE LOCATING, THE CONTRACTOR SHALL BE DIRECTED TO DO SO ACCORDING TO SECTION 803 OF THE STANDARD SPECIFICATIONS. THIS WORK SHALL BE PAID FOR ACCORDING TO ARTICLE 109.04 OF THE STANDARD SPECIFICATIONS.

COMMITMENTS

NONE

REV - MS

* FAP 002, FAU 9105PP

MODEL: General Notes-1 [Sheet]
FILE NAME: c:\pw\work\pawid\delman\ind1\020023\Typicals.dgn

USER NAME = Jon.Dintelman	DESIGNED -	REVISED -
	DRAWN -	REVISED -
	CHECKED -	REVISED -
PLOT DATE = 8/23/2024	DATE -	REVISED -

**STATE OF ILLINOIS
DEPARTMENT OF TRANSPORTATION**

**INDEX OF SHEETS, HIGHWAY STANDARDS,
GENERAL NOTES, COMMITMENTS**

SCALE: SHEET OF SHEETS STA. TO STA.

F.A.P. RTE.	SECTION	COUNTY	TOTAL SHEETS	SHEET NO.
*	(101,102,103,104,119)PP	MADISON	7	2
CONTRACT NO. 76U19				
ILLINOIS FED. AID PROJECT				

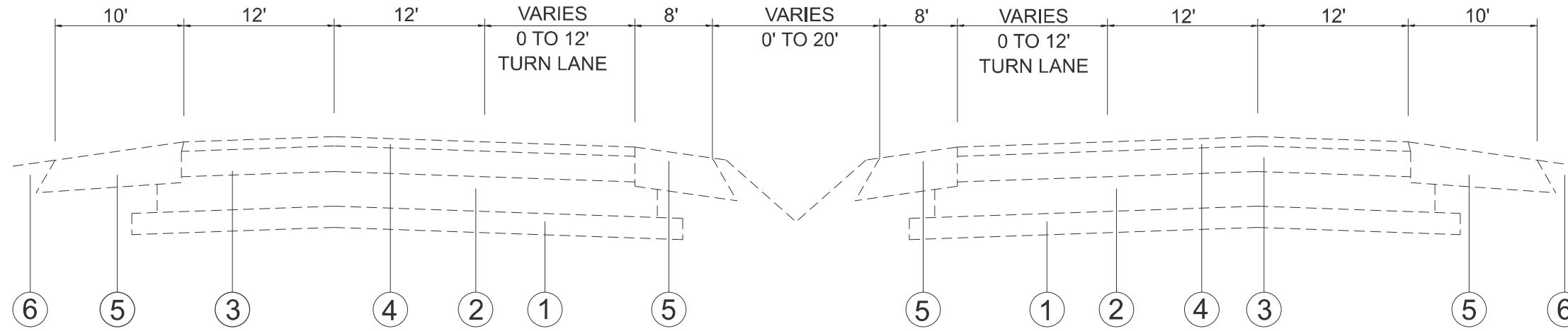
CODE NO.	ITEM	UNIT	TOTAL QUANTITY	CONSTRUCTION CODE					
				100% STATE FAP 002 ROADWAY 0006 URBAN	100% STATE FAU 9105 ROADWAY 0006 URBAN				
				44200050	WELDED WIRE REINFORCEMENT	SQ YD	638	606	32
				44201007	CLASS B PATCHES, TYPE II, 13 INCH	SQ YD	412	388	24
44201011	CLASS B PATCHES, TYPE III, 13 INCH	SQ YD	638	606	32				
44201299	DOWEL BARS 1 1/2"	EACH	1752	1652	100				
44213200	SAW CUTS	FOOT	4726	4462	264				
67100100	MOBILIZATION	L SUM	1	0.95	0.05				
70100310	TRAFFIC CONTROL AND PROTECTION, STANDARD 701421	L SUM	1	0.95	0.05				
70100320	TRAFFIC CONTROL AND PROTECTION, STANDARD 701422	L SUM	1	0.95	0.05				
70102635	TRAFFIC CONTROL AND PROTECTION, STANDARD 701701	L SUM	1	0.95	0.05				
70107025	CHANGEABLE MESSAGE SIGN	CAL DA	204	194	10				
* 78001110	PAINT PAVEMENT MARKING - LINE 4"	FOOT	1500	1452	48				
* 78001140	PAINT PAVEMENT MARKING - LINE 8"	FOOT	50	50					
* 78001180	PAINT PAVEMENT MARKING - LINE 24"	FOOT	72	72					

* SPECIALTY ITEM

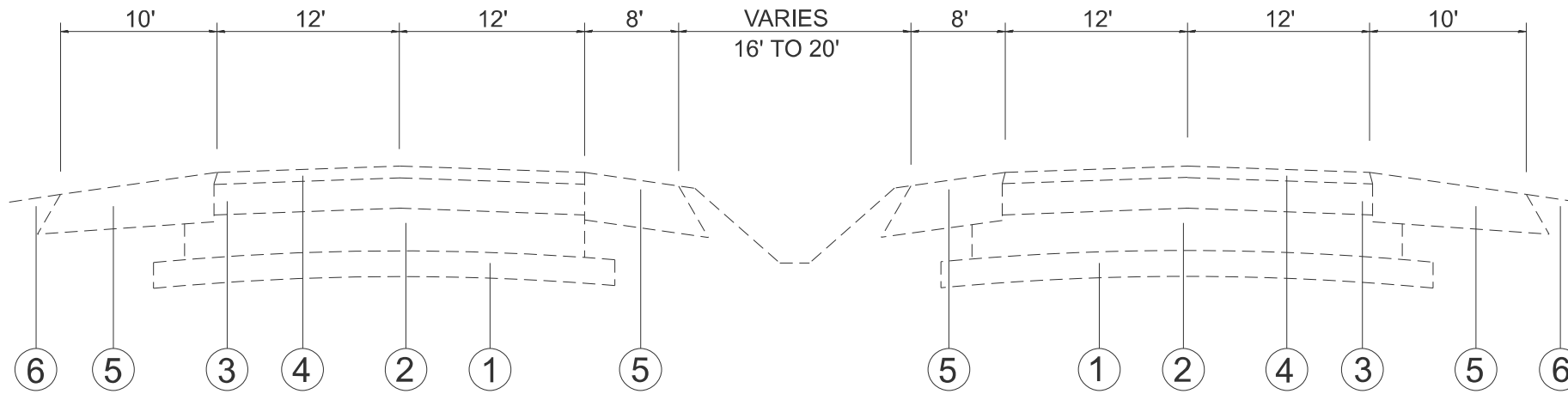
MODEL: SOQ (Sheet)
FILE NAME: c:\p\work\pav\pav\main\main\10200231\typicals.dgn

* FAP 002/FAU 9105

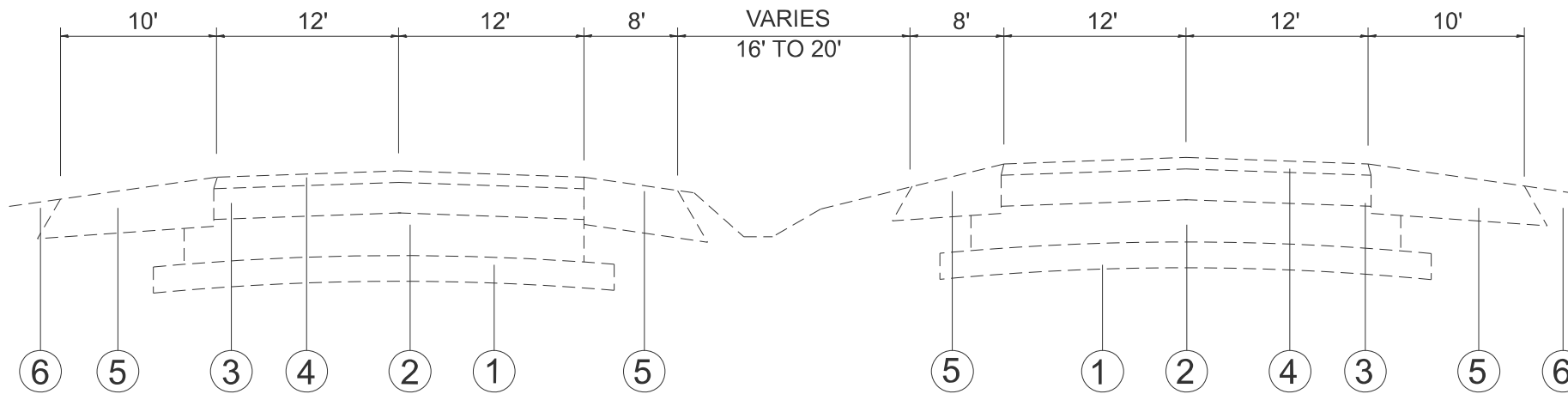
USER NAME = Jon.Dintelman	DESIGNED -	REVISED -	STATE OF ILLINOIS DEPARTMENT OF TRANSPORTATION	SUMMARY OF QUANTITIES			F.A.P. RTE.	SECTION	COUNTY	TOTAL SHEETS	SHEET NO.
	DRAWN -	REVISED -					*	(101,102,103,104,119)PP	MADISON	7	3
	CHECKED -	REVISED -		SCALE: SHEET OF SHEETS STA. TO STA.			CONTRACT NO. 76U19				
PLOT DATE = 8/23/2024	DATE -	REVISED -					ILLINOIS FED. AID PROJECT				



TYPICAL SECTION
M.S. 0.00 TO M.S. 6.40



TYPICAL SECTION
M.S. 6.40 TO M.S. 7.70



TYPICAL SECTION
M.S. 7.70 TO M.S. 11.25

- LEGEND**
- ① EXISTING STABILIZED SUB-BASE GRAN. MAT. 4"
 - ② EXISTING PCC PAVEMENT 9"
 - ③ EXISTING LEVELING BINDER (MM) 2 1/2"
 - ④ EXISTING HMA SURFACE COURSE 1 1/2"
 - ⑤ EXISTING HMA SHOULDERS 8"
 - ⑥ EXISTING AGGREGATE SHOULDERS

MODEL: Typical=1 [Sheet]
FILE NAME: c:\p\work\pwr\dm\main\10200231\Typicals.dgn

USER NAME = Jon.Dintelman	DESIGNED -	REVISED -
	DRAWN -	REVISED -
	CHECKED -	REVISED -
PLOT DATE = 8/12/2024	DATE -	REVISED -

STATE OF ILLINOIS
DEPARTMENT OF TRANSPORTATION

TYPICALS			
SCALE:	SHEET	OF	SHEETS
	STA.	TO	STA.

F.A.P. RTE.	SECTION	COUNTY	TOTAL SHEETS	SHEET NO.
*	(101,102,103,104,119)PP	MADISON	7	4
CONTRACT NO. 76U19				
ILLINOIS		FED. AID PROJECT		

*FAP 002/FAU 9105

MODEL: Schedule-f (Sheet)
 FILE NAME: c:\p\work\wv\wv\intelmain\id10200231\typicals.dgn

CLASS B PATCHING 13"								
LOCATION (SOUTH BOUND)		CLASS B PATCHING						
		LENGTH	WIDTH	TYPE-II	TYPE-III	SAW CUTS	DOWEL BARS 1 1/2"	WELDED WIRE REINFORCEMENT
MILE PT.	LANE	FOOT	FOOT	SQ YDS	SQ YDS	FOOT	EACH	SQ YDS
0.30	OL	12	12		16	60	20	16
0.50	IL	6	12	8		48	20	
0.51	IL	6	12	8		48	20	
0.51	OL	6	12	8		48	20	
0.52	IL	6	12	8		48	20	
0.52	OL	6	12	8		48	20	
0.53	IL	10	12	13		56	20	
0.55	OL	12	12		16	60	20	16
0.60	OL	6	12	8		48	20	
0.80	IL	12	12		16	60	20	16
0.80	OL	12	12		16	60	20	16
0.82	IL	8	12	11		52	20	
0.88	IL	6	12	8		48	20	
0.89	IL	6	12	8		48	20	
1.00	IL	6	12	8		48	20	
1.01	OL	6	12	8		48	20	
1.40	OL	6	12	8		48	20	
1.50	OL	12	12		16	60	20	16
1.50	IL	12	12		16	60	20	16
1.60	IL	6	12	8		48	20	
1.60	OL	6	12	8		48	20	
1.65	IL	12	12		16	60	20	16
1.65	OL	12	12		16	60	20	16
1.68	IL	8	12	11		52	20	
1.68	OL	8	12	11		52	20	
1.70	IL	6	12	8		48	20	
1.70	OL	6	12	8		48	20	
1.71	IL	6	12	8		48	20	
1.71	OL	6	12	8		48	20	
2.30	IL	12	12		16	60	20	16
2.30	OL	12	12		16	60	20	16
3.50	OL	6	12	8		48	20	
5.20	IL	6	12	8		48	20	
5.20	OL	6	12	8		48	20	
6.20	IL	6	12	8		48	20	
7.70	OL	12	12		16	60	20	16
7.75	OL	12	12		16	60	20	16
7.90	OL	6	12	8		48	20	
8.10	IL	6	12	8		48	20	
8.10	OL	6	12	8		48	20	
TOTAL				238	192	2084	800	192

* FAP 002/FAU 9105

USER NAME = Jon.Dintelman	DESIGNED -	REVISED -
	DRAWN -	REVISED -
	CHECKED -	REVISED -
PLOT DATE = 8/21/2024	DATE -	REVISED -

**STATE OF ILLINOIS
 DEPARTMENT OF TRANSPORTATION**

SCHEDULES			
SCALE:	SHEET	OF	SHEETS
	STA.		TO STA.

F.A.P. RTE.	SECTION	COUNTY	TOTAL SHEETS	SHEET NO.
*	(101,102,103,104,119)PP	MADISON	7	5
CONTRACT NO. 76U19				
ILLINOIS			FED. AID PROJECT	

CLASS B PATCHING 13"									
LOCATION (NORTH BOUND)		CLASS B PATCHING						WELDED WIRE REINFORCEMENT	
		LENGTH	WIDTH	TYPE-II	TYPE-III	SAW CUTS	DOWEL BARS 1 1/2"		
MILE PT.	LANE	FOOT	FOOT	SQ YDS	SQ YDS	FOOT	EACH	SQ YDS	
0.30	IL	12	12		16	60	20	16	
0.30	OL	12	12		16	60	20	16	
1.60	IL	6	12	8		48	20		
3.20	OL	12	12		16	60	20	16	
4.80	OL	12	12		16	60	20	16	
0.58	OL	6	12	8		48	20		
6.30	IL	12	12		16	60	20	16	
6.30	OL	12	12		16	60	20	16	
6.50	IL	12	12		16	60	20	16	
0.80	IL	12	12		16	60	20	16	
0.80	OL	12	12		16	60	20	16	
0.82	IL	8	12	11		52	20		
0.88	IL	6	12	8		48	20		
0.89	IL	6	12	8		48	20		
1.00	IL	6	12	8		48	20		
1.01	OL	6	12	8		48	20		
1.40	OL	6	12	8		48	20		
1.50	OL	12	12		16	60	20	16	
1.50	IL	12	12		16	60	20	16	
1.60	IL	6	12	8		48	20		
3.20	OL	12	12		16	60	20	16	
4.80	OL	12	12		16	60	20	16	
5.80	OL	15	12		20	66	20	20	
6.30	OL	12	12		16	60	20	16	
6.30	IL	12	12		16	60	20	16	
6.50	IL	12	12		16	60	20	16	
6.70	IL	12	12		16	60	20	16	
7.35	IL	12	12		16	60	20	16	
7.35	OL	12	12		16	60	20	16	
7.37	OL	12	12		16	60	20	16	
7.40	OL	6	12	8		48	20		
7.60	IL	8	12	11		52	20		
7.60	OL	8	12	11		52	20		
TOTAL					105	340	1854	660	340

PAVEMENT MARKING			
LOCATION	PAINT PAVEMENT MARKING		
M.P. 0.00 TO M.P. 8.10 N.B.	4"	8"	12"
M.P. 9.30 TO M.P. 7.60 S.B.	FOOT	FOOT	FOOT
TOTALS	1500	50	72

CLASS B PATCHING 13"					
LOCATION	CLASS B PATCHING				WELDED WIRE REINFORCEMENT
	TYPE-II	TYPE-III	SAW CUTS	DOWEL BARS 1 1/2"	
	SQ YDS	SQ YDS	FOOT	EACH	
SOUTH BOUND	238	192	2084	800	192
NORTH BOUND	105	340	1854	660	340
SUB-TOTALS	343	532	3938	1460	532
ADD. 20% FOR ANT. FAILURES	69	106	788	292	106
GRAND TOTALS	412	638	4726	1752	638

MODEL: Schedule-2 (Sheet)
 FILE NAME: c:\p\work\pav\pav\main\main\10200231\typicals.dgn

* FAP 002/FAU 9105

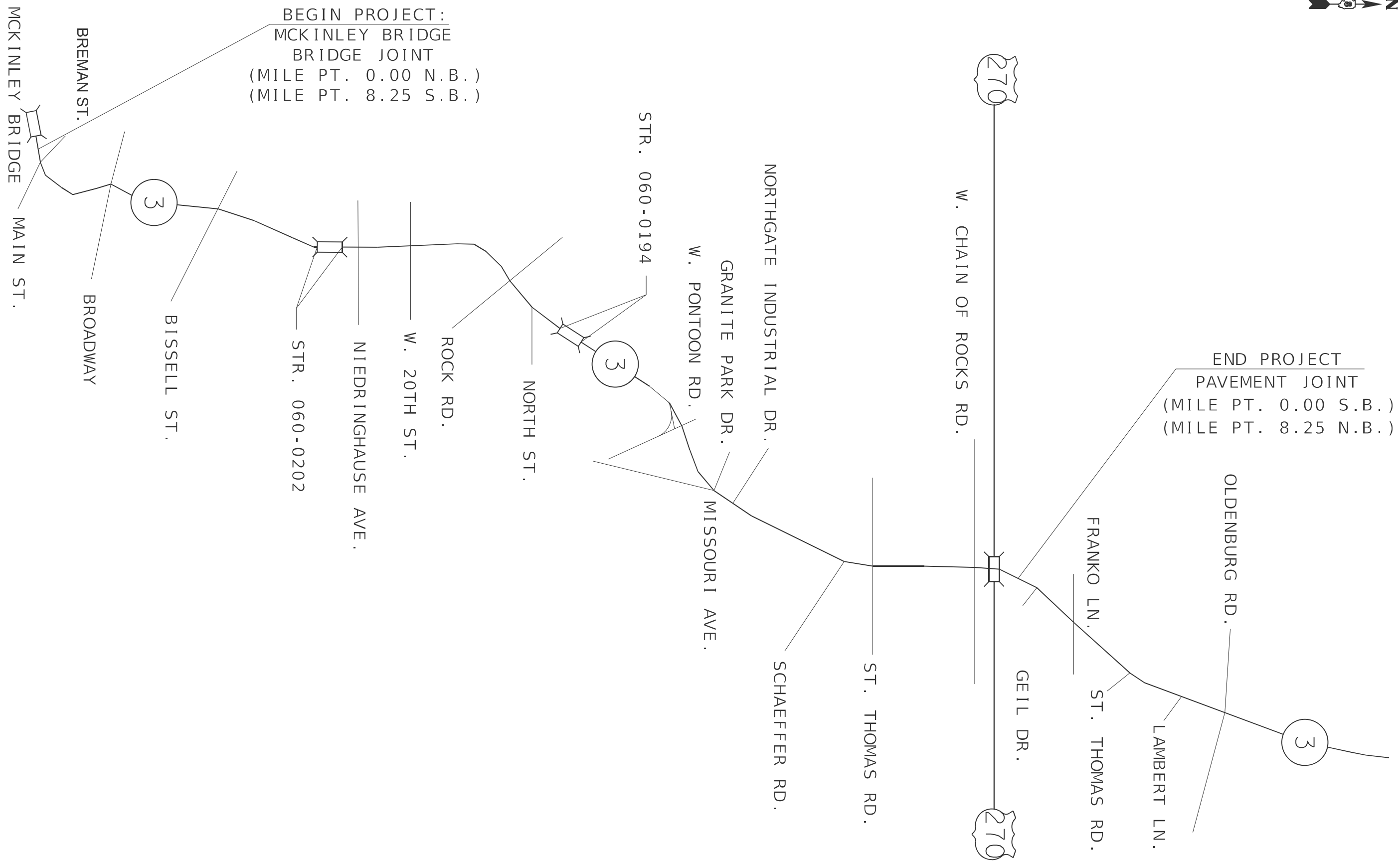
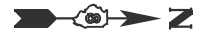
USER NAME = Jon.Dintelman	DESIGNED -	REVISED -
	DRAWN -	REVISED -
	CHECKED -	REVISED -
PLOT DATE = 8/23/2024	DATE -	REVISED -

**STATE OF ILLINOIS
DEPARTMENT OF TRANSPORTATION**

SCHEDULES

SCALE: SHEET OF SHEETS STA. TO STA.

F.A.P. RTE.	SECTION	COUNTY	TOTAL SHEETS	SHEET NO.
*	(101,102,103,104,119)PP	MADISON	7	6
CONTRACT NO. 76U19				
ILLINOIS FED. AID PROJECT				



BEGIN PROJECT:
 MCKINLEY BRIDGE
 BRIDGE JOINT
 (MILE PT. 0.00 N.B.)
 (MILE PT. 8.25 S.B.)

END PROJECT
 PAVEMENT JOINT
 (MILE PT. 0.00 S.B.)
 (MILE PT. 8.25 N.B.)

MODEL: Map (Sheet)
 FILE NAME: c:\p\work\pwr\oldintel\main\ind10200231\typ\cafs.dgn

USER NAME = Jon.Dintelman	DESIGNED -	REVISED -
	DRAWN -	REVISED -
	CHECKED -	REVISED -
PLOT DATE = 8/21/2024	DATE -	REVISED -

**STATE OF ILLINOIS
 DEPARTMENT OF TRANSPORTATION**

LOCATION MAP

SCALE: SHEET OF SHEETS STA. TO STA.

F.A.P. RTE.	SECTION	COUNTY	TOTAL SHEETS	SHEET NO.
*	(101,102,103,104,119)PP	MADISON	7	7
CONTRACT NO. 76U19				
ILLINOIS FED. AID PROJECT				

* FAP 002, FAU 9105