

STATE OF ILLINOIS
DEPARTMENT OF TRANSPORTATION

FAI RTE	SECTION	COUNTY	TOTAL SHEETS	SHEET NO.
255	67-(1,2,3)-PP, 82-(6,7,8)-PP	ILLINOIS	7	1
CONTRACT NO. 76U22			MONROE, ST. CLAIR	

D-98-101-24



PROPOSED HIGHWAY PLANS

**FAI ROUTE 255 (I-255)
SECTION 67-(1,2,3)-PP, 82-(6,7,8)-PP
PATCHING - CM
MONROE, ST. CLAIR COUNTIES**

C-98-188-24

FOR INDEX OF SHEETS, SEE SHEET NO. 2

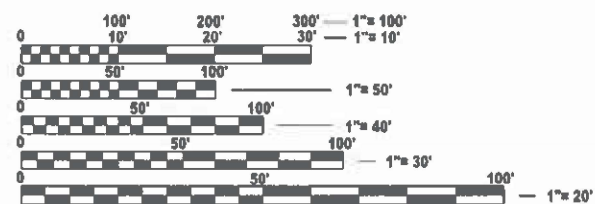
TRAFFIC DATA

MISSISSIPPI RIVER TO EXIT 6
2023 ADT = 51,700 (ACTUAL)
2024 ADT = 52,400 (ESTIMATED)
2044 ADT = 60,300 (ESTIMATED)
SU = 2.0% MU = 8.2%

EXIT 6 TO SOUTH MAIN STREET
2023 ADT = 41,000 (ACTUAL)
2024 ADT = 41,600 (ESTIMATED)
2044 ADT = 47,800 (ESTIMATED)
SU = 2.3% MU = 10.6%

SOUTH MAIN STREET TO IL 3 INTERCHANGE
2023 ADT = 35,700 (ACTUAL)
2024 ADT = 36,200 (ESTIMATED)
2044 ADT = 41,600 (ESTIMATED)
SU = 2.9% MU = 14.7%

IL 3 INTERCHANGE TO IL 157
2023 ADT = 31,400 (ACTUAL)
2024 ADT = 31,800 (ESTIMATED)
2044 ADT = 36,600 (ESTIMATED)
SU = 3.2% MU = 14.0%

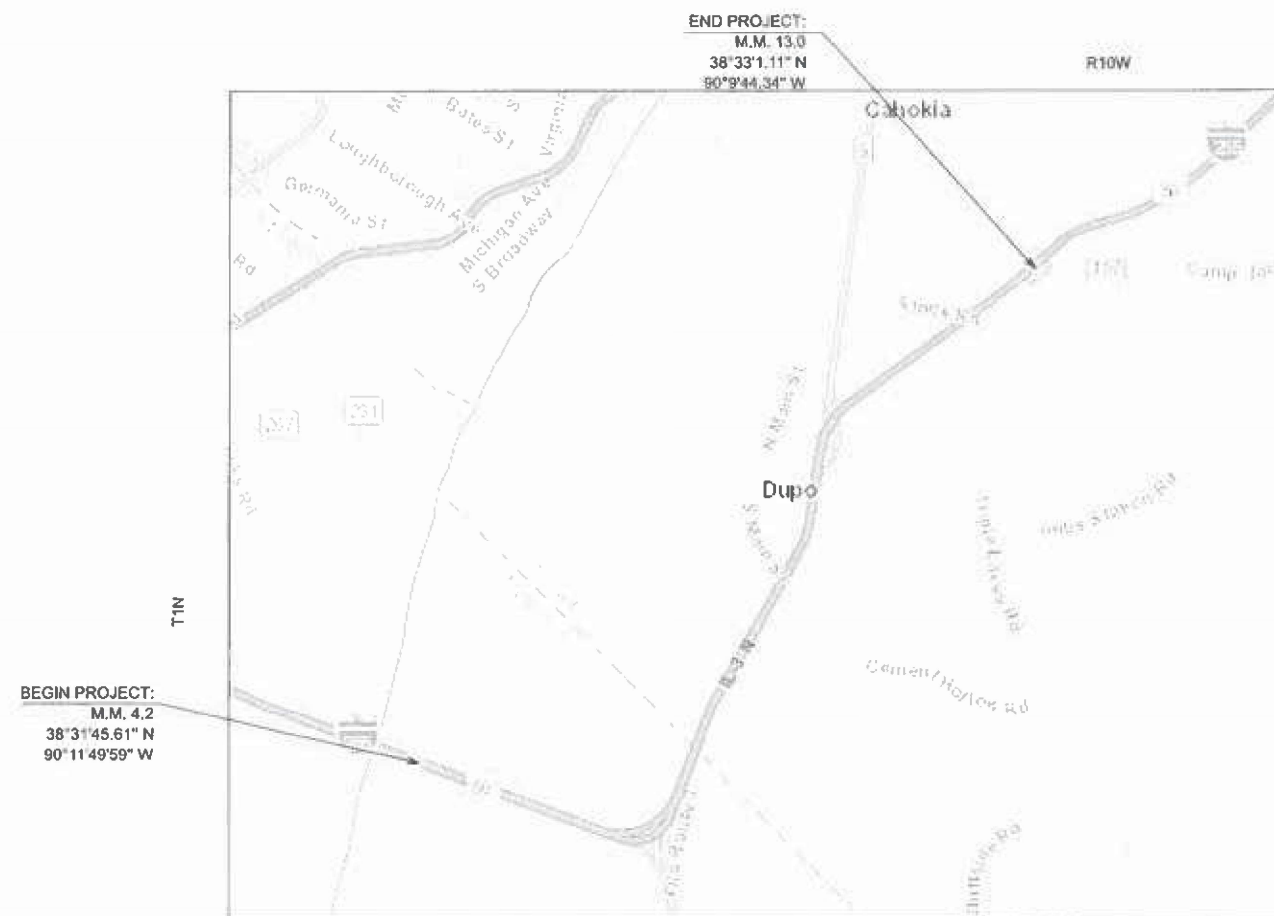


FULL SIZE PLANS HAVE BEEN PREPARED USING STANDARD ENGINEERING SCALES. REDUCED SIZED PLANS WILL NOT CONFORM TO STANDARD SCALES. IN MAKING MEASUREMENTS ON REDUCED PLANS, THE ABOVE SCALES MAY BE USED.

J.U.L.I.E.
JOINT UTILITY LOCATION INFORMATION FOR EXCAVATION
1-800-892-0123
OR 811

PROJECT ENGINEER: BILLIE OWEN
PROJECT MANAGER: MIKE BERG

CONTRACT NO. 76U22



GROSS LENGTH = 39,780 FT. = 7.53 MILES
NET LENGTH = 39,780 FT. = 7.53 MILE

STATE OF ILLINOIS
DEPARTMENT OF TRANSPORTATION

SUBMITTED Aug. 8 2024
[Signature]
REGIONAL ENGINEER

October 4, 2024
[Signature]
ENGINEER OF DESIGN AND ENVIRONMENT

October 4, 2024
[Signature]
DIRECTOR OF HIGHWAYS PROJECT IMPLEMENTATION 13

PRINTED BY THE AUTHORITY
OF THE STATE OF ILLINOIS

INDEX OF SHEETS

- 1. COVER SHEET
- 2. INDEX OF SHEETS, STANDARDS, GENERAL NOTES, COMMITMENTS
- 3. SUMMARY OF QUANTITIES
- 4. TYPICAL SECTIONS
- 5. CHANGEABLE MESSAGE SIGN DETAIL
- 6-7. CLASS A PATCHING (SPECIAL) DETAIL

STANDARDS

- 000001-08 STANDARD SYMBOLS, ABBREVIATIONS AND PATTERNS
- 001006 DECIMAL OF AN INCH AND OF A FOOT
- 420001-10 PAVEMENT JOINTS
- 701101-05 OFF-RD OPERATIONS, MULTILANE, 15' TO 24" FORM PAVEMENT EDGE
- 701106-02 OFF-RD OPERATIONS, MULTILANE, MORE THAN 15' AWAY
- 701400-12 APPROACH TO LANE CLOSURE FREEWAY EXPRESSWAY
- 701401-13 LANE CLOSURE FREEWAY EXPRESSWAY
- 701411-09 LANE CLOSURE MULTILANE ENTRANCE OR EXIT RAMP 45 MPH OR MORE
- 701426-09 LANE CLOSURE MULTILANE INTERMITTENT OR MOVING OPERATIONS 45 MPH OR MORE
- 701428-01 TRAFFIC CONTROL SETUP REMOVAL FREEWAY EXPRESSWAY
- 701446-11 TWO LANE CLOSURE FREEWAY EXPRESSWAY
- 701901-09 TRAFFIC CONTROL DEVICES
- 780001-05 TYPICAL PAVEMENT MARKINGS
- 781001-04 TYPICAL APPLICATIONS RAISED REFLECTIVE PAVEMENT MARKERS

GENERAL NOTES

- 1. UTILITIES KNOWN TO HAVE FACILITIES WITHIN THE PROJECT AREA ARE AS FOLLOWS:

AMEREN ILLINOIS
 BUCKEYE PIPE LINE COMPANY
 VILLAGE OF CAHOKIA
 CHARTER COMMUNICATIONS, INC.
 CLEARWAVE FIBER LLC
 CITY OF COLUMBIA
 VILLAGE OF DUPO
 EVERSTREAM GLC HOLDING COMPANY LLC
 HARRISONVILLE TELEPHONE COMPANY
 VERIZON BUSINESS
 METRO EAST SANITARY DISTRICT
 PRAIRIE DU PONT PUBLIC WATER DISTRICT
 SUGAR LOAF TOWNSHIP SEWER SYSTEM

- 2. NO SURVEY WAS PERFORMED FOR THIS PROJECT AND THE PLANS WERE CREATED USING MICROFILM AND FIELD MEASUREMENTS.

- 3. THE RESIDENT ENGINEER SHALL VERIFY THE EXISTENCE OF HIGHWAY LIGHTING, INTELLIGENT TRANSPORTATION SYSTEMS (I.T.S.) UTILITIES, AND/OR ELECTRICAL CABLES ASSOCIATED WITH TRAFFIC SIGNALS WITHIN THE PROJECT LIMITS. IF ANY OF THESE EXIST WITHIN THE PROJECT LIMITS, AND IF THESE ITEMS REQUIRE LOCATING, THE CONTRACTOR SHALL BE DIRECTED TO DO SO ACCORDING TO SECTION 803 OF THE STANDARD SPECIFICATIONS. THIS WORK SHALL BE PAID FOR ACCORDING TO ARTICLE 109.04 OF THE STANDARD SPECIFICATIONS.

- 4. SIX CHANGEABLE MESSAGE SIGNS SHALL BE REQUIRED FOR THIS PROJECT. THEY SHALL BE PLACED TWO WEEKS PRIOR TO ANY LANE CLOSURE AND SHALL REMAIN UP FOR THE DURATION OF THE PROJECT. THE CHANGEABLE MESSAGE SIGNS SHALL BE PLACED AS SHOWN ON THE LOCATION MAP SHEET OR AT THE DISCRETION OF THE ENGINEER.

- 5. THE DEPARTMENT STRONGLY ENCOURAGES THE PRIME CONTRACTOR AND THEIR APPROVED SUB-CONTRACTORS TO HIRE MINORITY, WOMEN AND DISADVANTAGED INDIVIDUALS FROM ITS FEDERALLY FUNDED HIGHWAY CONSTRUCTION CAREERS TRAINING PROGRAM (HCCTP) TO HELP MEET WORKFORCE AND TRAINEE GOALS. THIS PROGRAM IS TRAINING MINORITIES, WOMEN AND DISADVANTAGED INDIVIDUALS IN HIGHWAY CONSTRUCTION-RELATED SKILLS, E.G., MATH FOR THE TRADES, JOB READINESS, TECHNICAL SKILLS COURSEWORK (CARPENTRY, CONCRETE FLATWORK, BLUEPRINT READING, SITE PLANS, SITE WORK, TOOLS USE, ETC.) AND OSHA 10 HOUR CERTIFICATION, TO PREPARE THEM FOR A CAREER IN THE HIGHWAY CONSTRUCTION TRADES. GRADUATES ARE WELL-TRAINED AND READY TO BECOME PRODUCTIVE ENTRY-LEVEL CONSTRUCTION WORKERS. CONTACT THE DISTRICT 8 EEO OFFICE AT 618-346-3360 AND/OR THE HCCTP COORDINATOR AT 618-874-6528 TO LEARN MORE ABOUT THE PROGRAM AND FOR ASSISTANCE IN MEETING WORKFORCE AND TRAINEE GOALS.

- 6. NO PATCHING REPAIR SCHEDULE WAS DEVELOPED FOR THIS CONTRACT. FINAL REPAIR LOCATIONS, SIZES, AND THEIR PRIORITY FOR REPAIR ARE TO BE DETERMINED BY THE RESIDENT ENGINEER. ALL AREAS TO BE REPAIRED SHALL BE FULL LANE WIDTH. CARE SHOULD BE TAKEN TO DETERMINE LOCATIONS MOST IN NEED OF REPAIR THROUGHOUT THE PROJECT LIMIT PRIOR TO THE COMMENCEMENT OF CONSTRUCTION OPERATIONS AS IT WILL NOT BE POSSIBLE TO REPAIR ALL QUESTIONABLE AREAS DUE TO THE LIMITED QUANTITIES INCLUDED IN THE PLANS.

COMMITMENTS

NONE

REV - MS

MODEL: General Notes (Sheet)
 FILE NAME: c:\pw\work\kwid\robert.hughes@illinois.gov\1017053\0876\22-sht-01-gennote.dgn

USER NAME = Robert.Hughes	DESIGNED -	REVISED -	STATE OF ILLINOIS DEPARTMENT OF TRANSPORTATION	INDEX OF SHEETS, STANDARDS, GENERAL NOTES, COMMITMENTS	F.A.I RTE.	SECTION	COUNTY	TOTAL SHEETS	SHEET NO.	
	DRAWN -	REVISED -			255	67-(1,2,3)-PP, 82-(6,7,8)-PP	*	7	2	
	CHECKED -	REVISED -			CONTRACT NO. 76U22					
PLOT DATE = 8/5/2024	DATE -	REVISED -			SCALE:	SHEET 1	OF 1	SHEETS	STA.	TO STA.

CONSTRUCTION CODE	
ST. CLAIR 100% STATE ROADWAY	MONROE 100% STATE ROADWAY
0006 URBAN	0006 URBAN

CODE NO.	ITEM	UNIT	TOTAL QUANTITY	CONSTRUCTION CODE	
				ST. CLAIR 100% STATE ROADWAY 0006 URBAN	MONROE 100% STATE ROADWAY 0006 URBAN
44213000	PATCHING REINFORCEMENT	SQ YD	2300	1380	920
44213200	SAW CUTS	FOOT	9000	5400	3600
44213204	TIE BARS 3/4"	EACH	114	68	46
67100100	MOBILIZATION	L SUM	1	0.6	0.4
70100420	TRAFFIC CONTROL AND PROTECTION, STANDARD 701411	EACH	10	6	4
70100800	TRAFFIC CONTROL AND PROTECTION, STANDARD 701401	L SUM	1	0.6	0.4
70100815	TRAFFIC CONTROL AND PROTECTION, STANDARD 701446	L SUM	1	0.6	0.4
70107025	CHANGEABLE MESSAGE SIGN	CAL DA	354	236	118
70200100	NIGHTTIME WORK ZONE LIGHTING	L SUM	1	0.6	0.4
70300100	SHORT TERM PAVEMENT MARKING	FOOT	75	45	30
70300150	SHORT TERM PAVEMENT MARKING REMOVAL	SQ FT	1150	690	460
* 78001130	PAINT PAVEMENT MARKING - LINE 6"	FOOT	2250	1350	900
* 78100100	RAISED REFLECTIVE PAVEMENT MARKER	EACH	50	30	20
X4420543	CLASS A PATCHES, TYPE I, 9 INCH (SPECIAL)	SQ YD	200	120	80

* SPECIALTY ITEM

CONSTRUCTION CODE	
ST. CLAIR 100% STATE ROADWAY	MONROE 100% STATE ROADWAY
0006 URBAN	0006 URBAN

CODE NO.	ITEM	UNIT	TOTAL QUANTITY	CONSTRUCTION CODE	
				ST. CLAIR 100% STATE ROADWAY 0006 URBAN	MONROE 100% STATE ROADWAY 0006 URBAN
X4420545	CLASS A PATCHES, TYPE II, 9 INCH (SPECIAL)	SQ YD	800	480	320
X4420547	CLASS A PATCHES, TYPE III, 9 INCH (SPECIAL)	SQ YD	300	180	120
X4420549	CLASS A PATCHES, TYPE IV, 9 INCH (SPECIAL)	SQ YD	1000	600	400
Ø Z0076604	TRAINEES TRAINING PROGRAM GRADUATE	HOUR	500	500	

Ø 0042

MODEL: SQO [Sheet] FILE NAME: c:\pw\work\pawid\robert.hughes@illinois.gov\17053\0876\22-shi-SQO.dgn

USER NAME = Robert.Hughes	DESIGNED -	REVISED -
	DRAWN -	REVISED -
	CHECKED -	REVISED -
PLOT DATE = 7/30/2024	DATE -	REVISED -

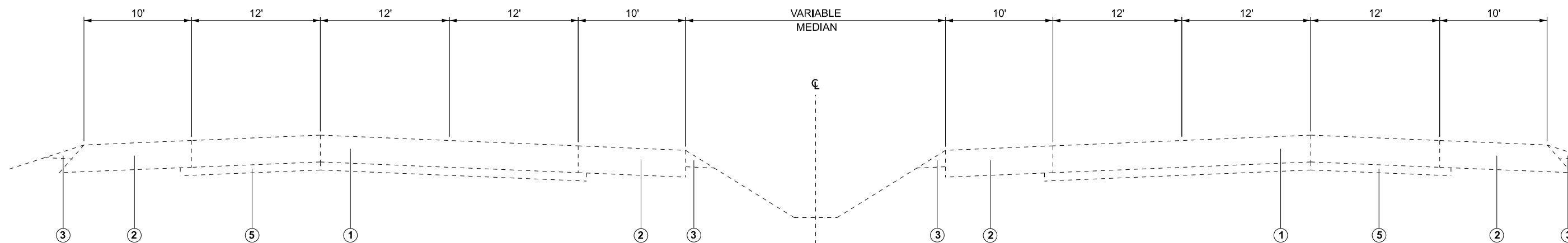
**STATE OF ILLINOIS
DEPARTMENT OF TRANSPORTATION**

SUMMARY OF QUANTITIES

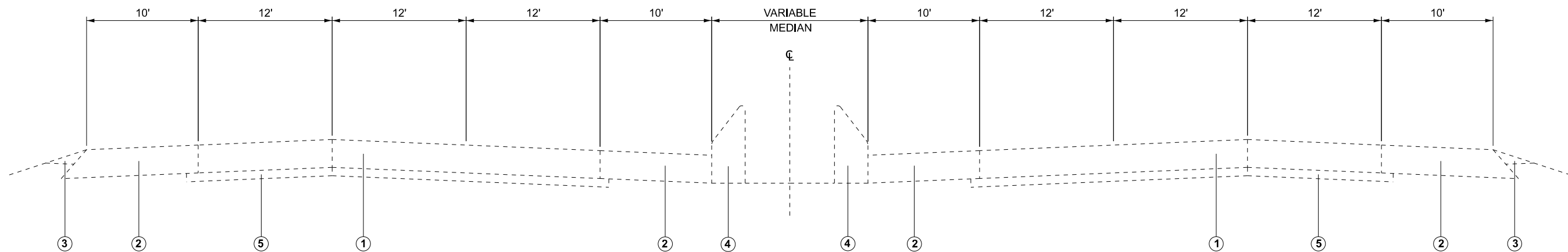
SCALE: SHEET 1 OF 1 SHEETS STA. TO STA.

F.A.I RTE.	SECTION	COUNTY	TOTAL SHEETS	SHEET NO.
255	67-(1,2,3)-PP, 82-(6,7,8)-PP	*	7	3

CONTRACT NO. 76U22
ILLINOIS | FED. AID PROJECT *MONROE, ST. CLAIR



FAI 255
M.M. 4.20 TO M.M. 10.50



FAI 255
M.M. 10.50 TO M.M. 13.0

- ① EXISTING C.R.P.C.C. PAVEMENT 9"
- ② EXISTING BITUMINOUS SHOULDERS 9"
- ③ EXISTING AGGREGATE SHOULDERS, TYPE B
- ④ EXISTING CONCRETE BARRIER
- ⑤ EXISTING STABILIZED SUB-BASE, 4"

MODEL: Typical=1 [Sheet]
 FILE NAME: c:\p\work\pav\robert.hughes@illinois.gov\1017053\0876\22-st-4-typical.dgn

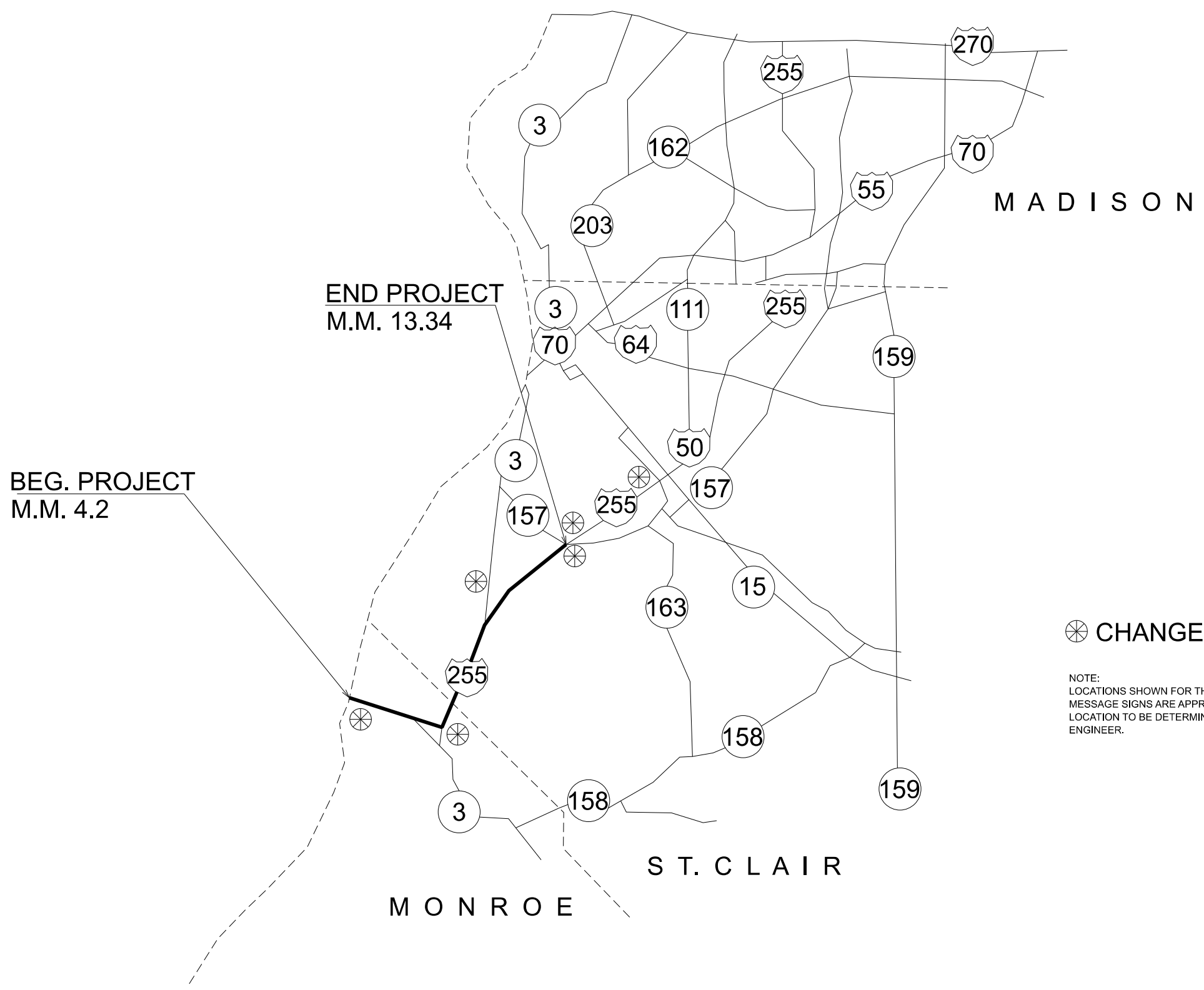
USER NAME = Robert,Hughes	DESIGNED -	REVISED -
	DRAWN -	REVISED -
	CHECKED -	REVISED -
PLOT DATE = 7/11/2024	DATE -	REVISED -

STATE OF ILLINOIS
DEPARTMENT OF TRANSPORTATION

TYPICAL SECTIONS

SCALE: NTS SHEET 1 OF 1 SHEETS STA. TO STA.

F.A.I RTE.	SECTION	COUNTY	TOTAL SHEETS	SHEET NO.
255	67-(1,2,3)-PP, 82-(6,7,8)-PP	*	7	4
CONTRACT NO. 76U22				
ILLINOIS		FED. AID PROJECT		



LEGEND

⊗ CHANGEABLE MESSAGE SIGN

NOTE:
LOCATIONS SHOWN FOR THE CHANGEABLE MESSAGE SIGNS ARE APPROXIMATE. THE EXACT LOCATION TO BE DETERMINED BY THE RESIDENT ENGINEER.

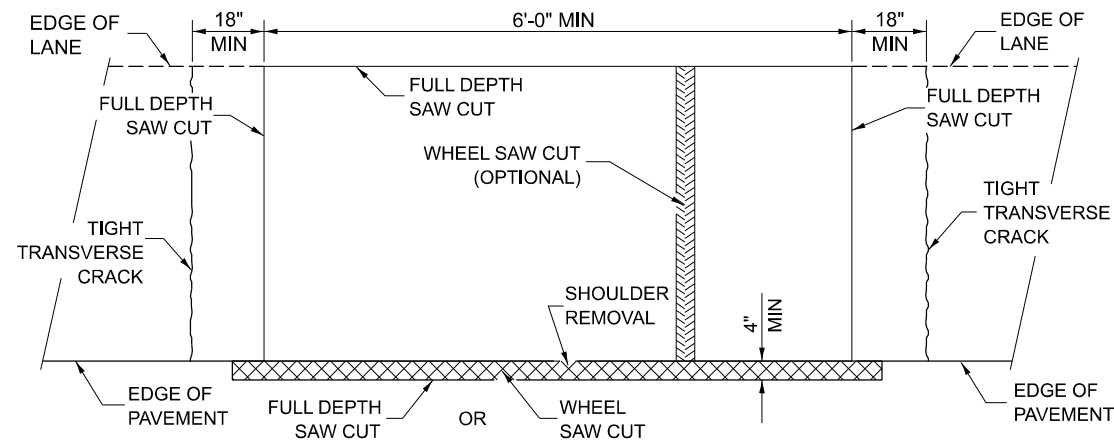
MODEL: CNIB MAP (Sheet)
FILE NAME: c:\pw_work\pvd\robert.hughes@illinois.gov\1017053\0876\22-est-aging.dgn

USER NAME = Robert,Hughes	DESIGNED -	REVISED -
	DRAWN -	REVISED -
	CHECKED -	REVISED -
PLOT DATE = 8/1/2024	DATE -	REVISED -

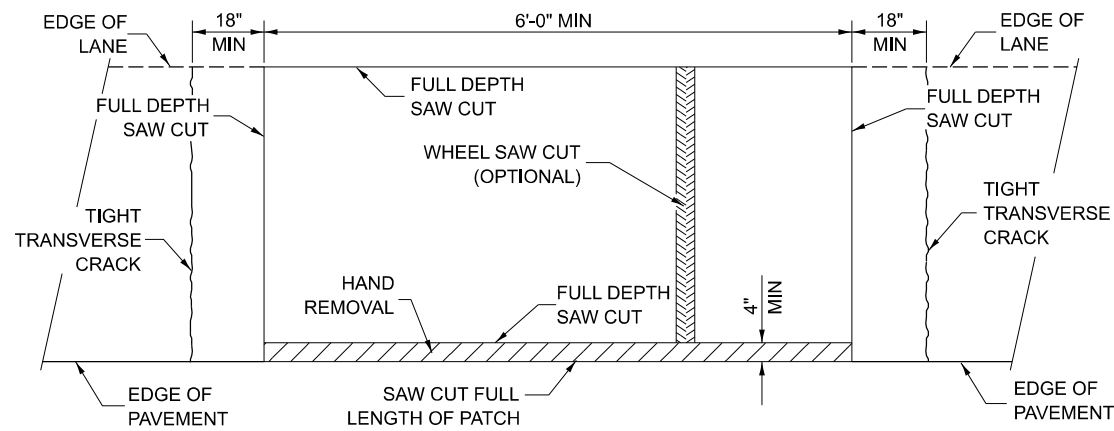
**STATE OF ILLINOIS
DEPARTMENT OF TRANSPORTATION**

CHANGEABLE MESSAGE SIGN DETAIL			
SCALE:	SHEET 1	OF 1 SHEETS	STA. TO STA.

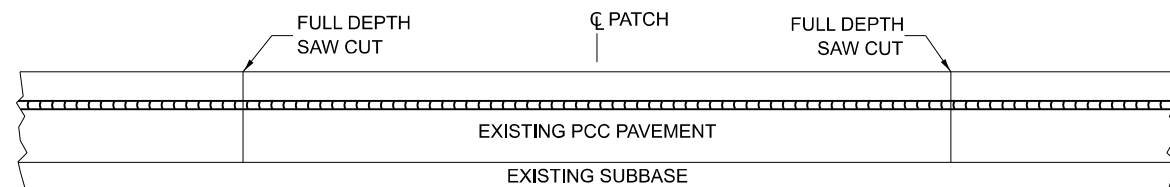
F.A.I RTE.	SECTION	COUNTY	TOTAL SHEETS	SHEET NO.
255	67-(1,2,3)-PP, 82-(6,7,8)-PP	*	7	5
CONTRACT NO. 76U22				
ILLINOIS		FED.AID PROJECT		



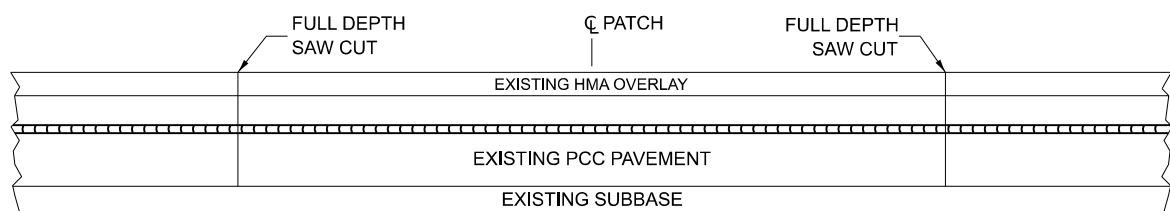
**PAVEMENT SAWING DETAIL
(HMA SHOULDER)**



**PAVEMENT SAWING DETAIL
(PCC SHOULDER)**

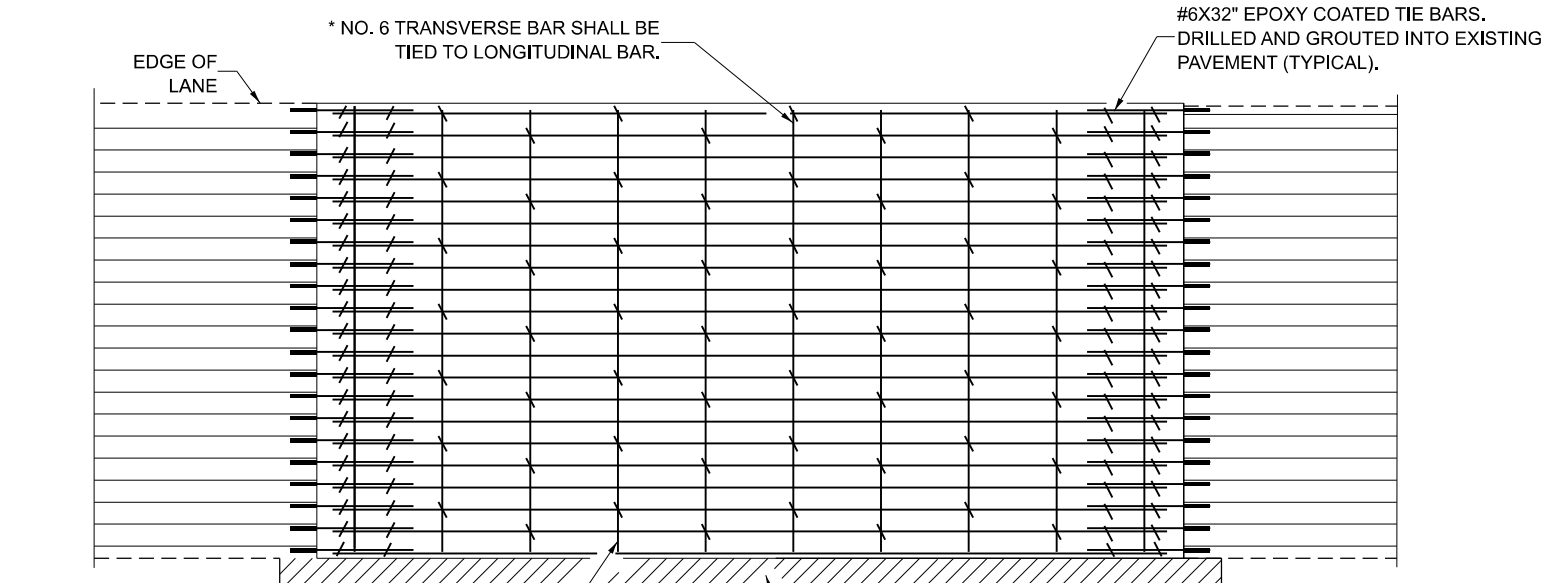


EXISTING PAVEMENT WITHOUT HMA SURFACE

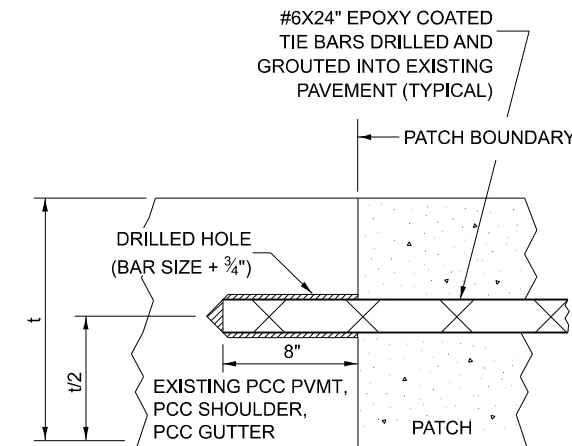


EXISTING PAVEMENT WITH HMA SURFACE

**PAVEMENT SAWING DETAIL FOR CLASS A PATCHING
(CRC PAVEMENT)**



PAVEMENT REINFORCEMENT DETAIL



LONGITUDINAL CONSTRUCTION JOINT

NOTES:

EXISTING LONGITUDINAL REINFORCEMENT SPACING: $\pm 6\frac{1}{2}$ ".

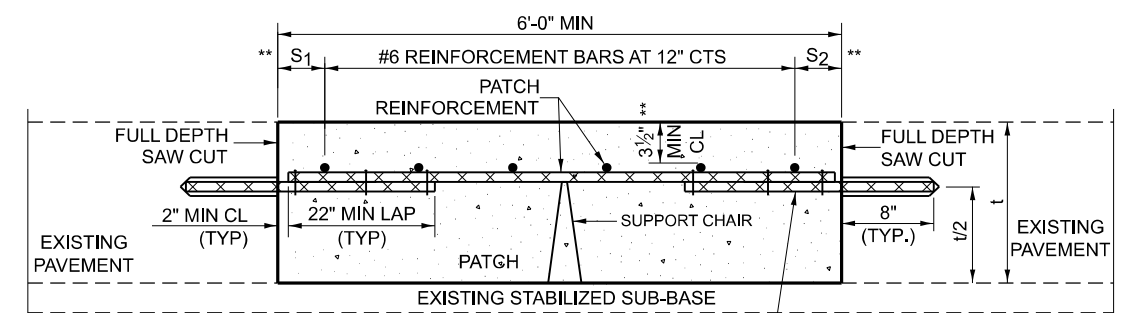
SPACING OF NEW LONGITUDINAL REINFORCEMENT AND NEW LONGITUDINAL TIE BARS SHALL MATCH SPACING OF EXISTING REINFORCEMENT AND SHALL BE TIED TOGETHER WITH A MINIMUM OF TWO TIES PER BAR.

SUPPORT CHAIRS SHALL BE REQUIRED WHENEVER PATCH LENGTH EXCEEDS 6'-0"

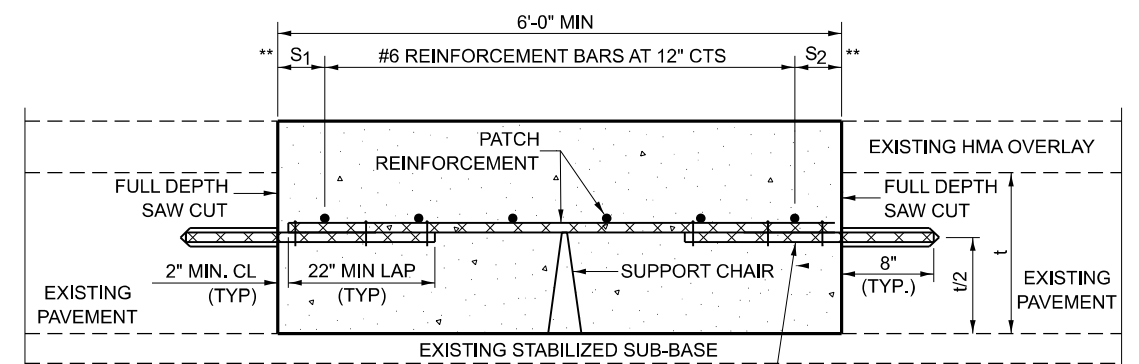
PATCHES GREATER THAN 20 FEET IN LENGTH SHALL REQUIRE AN ADDITIONAL TRANSVERSE SAW CUT EVERY 10 FEET.

*EVERY THIRD INTERSECTION MUST BE TIED. WHEN THE MINIMUM CLEARANCE CANNOT BE OBTAINED WITH THE TRANSVERSE REBAR ON TOP, THEN THE TRANSVERSE REBAR SHALL BE TIED TO THE BOTTOM OF THE LONGITUDINAL REBAR.

**VARIABLES WHERE S_1 AND S_2 ARE $2\frac{1}{2}$ " MIN. AND 12" MAX.



WITHOUT HMA OVERLAY



WITH HMA OVERLAY

**PATCHING DETAIL FOR CLASS A PATCHING
(CRC PAVEMENT)**

MODEL: Class A Special 1 (Sheet)
FILE NAME: c:\pwr\work\pwr\robert.hughes@illinois.gov\1017053\0876\22-sh-detailed.dgn

USER NAME = Robert.Hughes	DESIGNED -	REVISED -
	DRAWN -	REVISED -
	CHECKED -	REVISED -
PLOT DATE = 7/30/2024	DATE -	REVISED -

**STATE OF ILLINOIS
DEPARTMENT OF TRANSPORTATION**

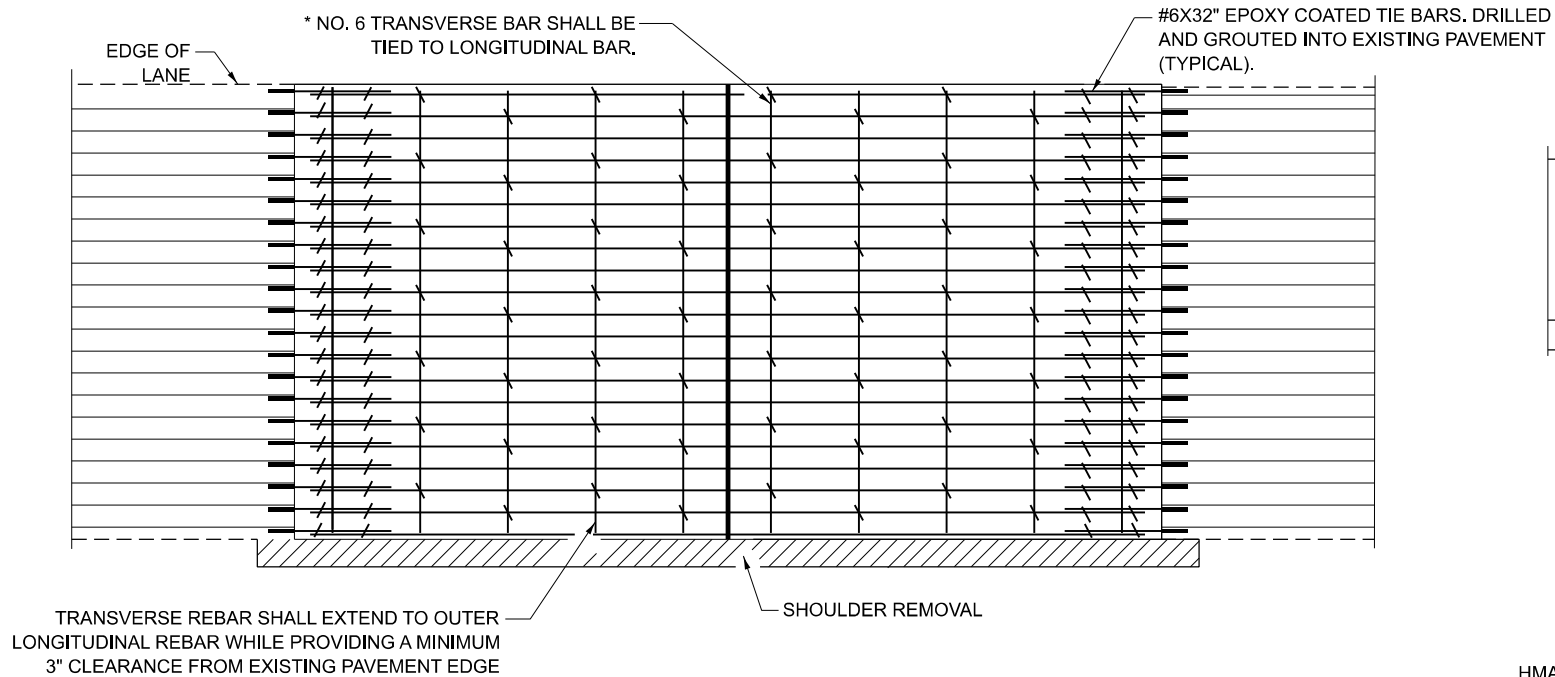
CLASS A PATCHES (SPECIAL) DETAIL

SCALE: SHEET 1 OF 2 SHEETS STA. TO STA.

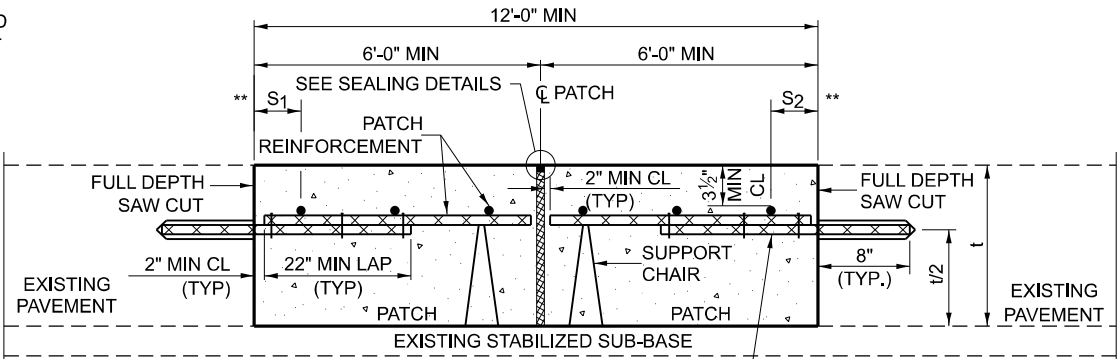
F.A.I RTE.	SECTION	COUNTY	TOTAL SHEETS	SHEET NO.
255	67-(1,2,3)-PP, 82-(6,7,8)-PP	*	7	6
CONTRACT NO. 76U22				
ILLINOIS FED. AID PROJECT				

*MONROE, ST. CLAIR

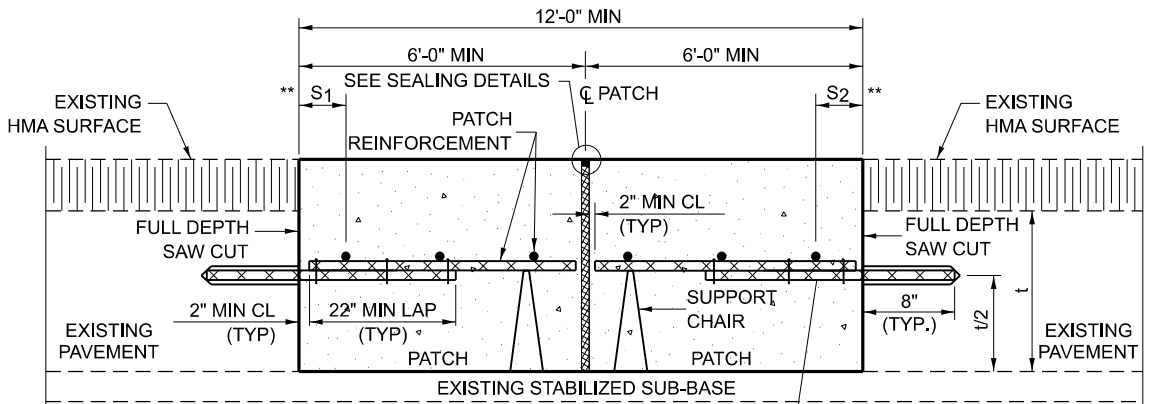
TRANSVERSE EXPANSION JOINTS



PAVEMENT REINFORCEMENT DETAIL

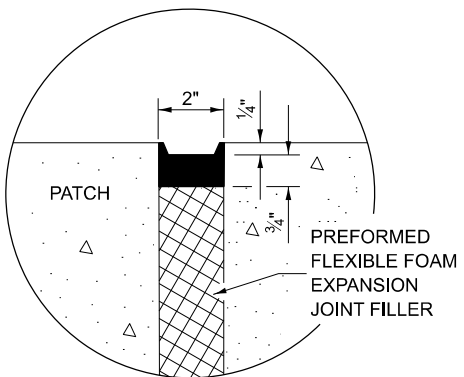


WITHOUT HMA OVERLAY

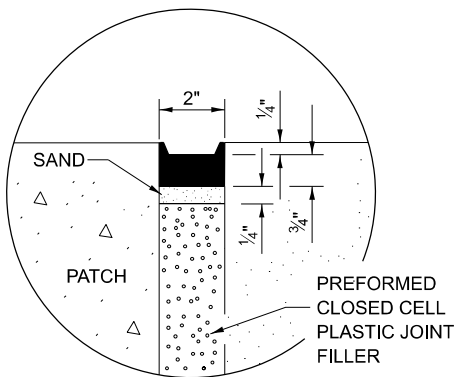


WITH HMA OVERLAY

CLASS A PATCH WITH EXPANSION JOINT



SEALING DETAIL



SEALING DETAIL

NOTES:

EXISTING LONGITUDINAL REINFORCEMENT SPACING; $\pm 6\frac{1}{2}$ ".

SPACING OF NEW LONGITUDINAL REINFORCEMENT AND NEW LONGITUDINAL TIE BARS SHALL MATCH SPACING OF EXISTING REINFORCEMENT AND SHALL BE TIED TOGETHER WITH A MINIMUM OF TWO TIES PER BAR.

SUPPORT CHAIRS SHALL BE REQUIRED WHENEVER PATCH LENGTH EXCEEDS 6'-0"

PATCHES GREATER THAN 20 FEET IN LENGTH SHALL REQUIRE AN ADDITIONAL TRANSVERSE SAW CUT EVERY 10 FEET.

*EVERY THIRD INTERSECTION MUST BE TIED. WHEN THE MINIMUM CLEARANCE CANNOT BE OBTAINED WITH THE TRANSVERSE REBAR ON TOP, THEN THE TRANSVERSE REBAR SHALL BE TIED TO THE BOTTOM OF THE LONGITUDINAL REBAR.

**VARIABLES WHERE S₁ AND S₂ ARE 2 1/2" MIN. AND 12" MAX.

MODEL: Class A Special 2 (Sheet)
FILE NAME: c:\pw\work\pav\robert.hughes@illinois.gov\41017053\0876\22-eh-detail.dgn

USER NAME = Robert,Hughes	DESIGNED -	REVISED -
	DRAWN -	REVISED -
	CHECKED -	REVISED -
PLOT DATE = 8/5/2024	DATE -	REVISED -

**STATE OF ILLINOIS
DEPARTMENT OF TRANSPORTATION**

CLASS A PATCHES (SPECIAL) DETAIL

SCALE: SHEET 2 OF 2 SHEETS STA. TO STA.

F.A.I RTE.	SECTION	COUNTY	TOTAL SHEETS	SHEET NO.
255	67-(1,2,3)-PP, 82-(6,7,8)-PP	*	7	7
CONTRACT NO. 76U22				
ILLINOIS FED.AID PROJECT				

*MONROE, ST. CLAIR