

STATE OF ILLINOIS
DEPARTMENT OF TRANSPORTATION

F.A.P. RTE.	SECTION	COUNTY	TOTAL SHEETS	SHEET NO.
329	19CR-1	PERRY	28	1
		ILLINOIS	CONTRACT NO. 78949	

FOR INDEX OF SHEETS, SEE SHEET NO. 3
FOR SUMMARY OF QUANTITIES, SEE SHEET NO. 4 - 7

PROPOSED HIGHWAY PLANS

FAP ROUTE 329 (IL 154)
SECTION 19CR-1
PROJECT BR-GGPK(511)
CULVERT REPLACEMENT
PERRY COUNTY

C-99-056-22

TRAFFIC DATA

2021 ADT = 2200
19% TRUCKS

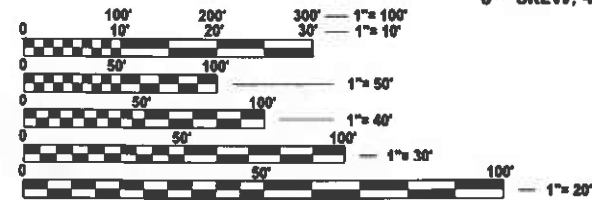
TOWNSHIP

PERRY COUNTY UNIT
ROAD DISTRICT



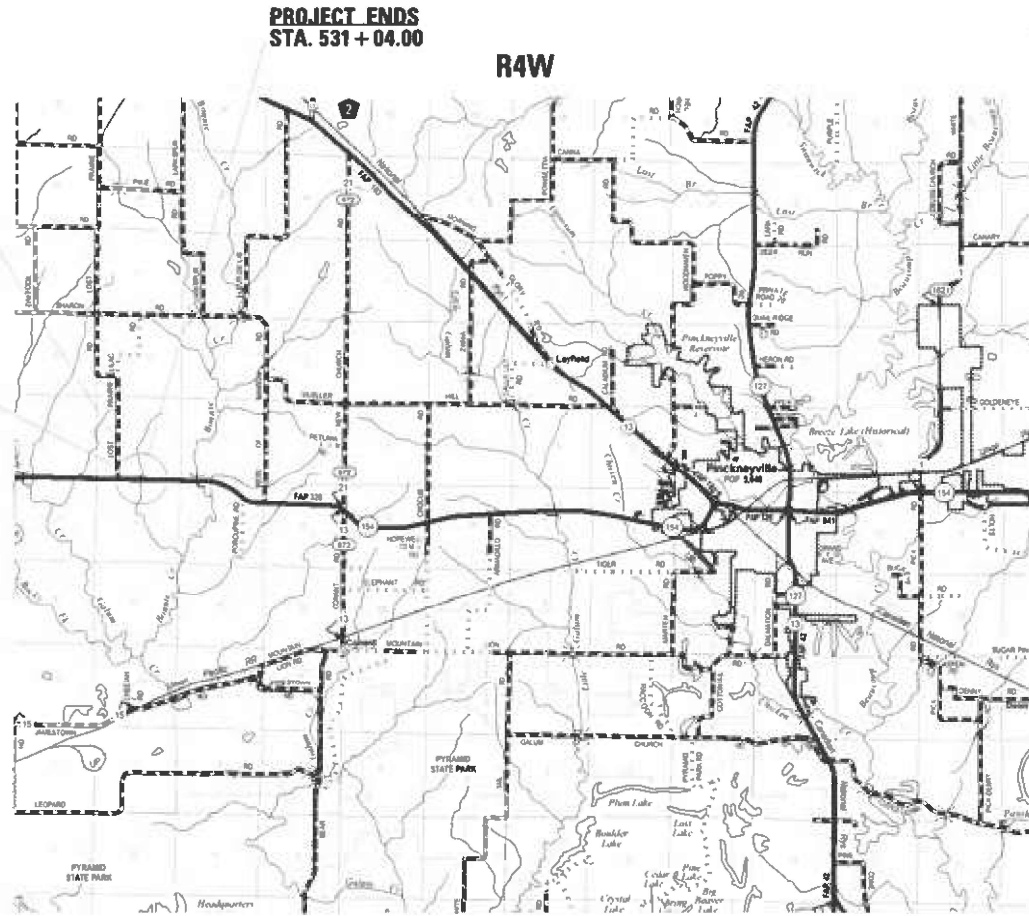
DESIGN DESIGNATION : N/A
COORDINATE SYSTEM STATE PLAN ZONE: ILLINOIS WEST
POSTED SPEED : 55 MPH

SN073-7048(E)/SN073-7091(P)
C PROP. CULVERT STA. 530 + 84
12'x6' PROP. PRECAST BOX CULVERT
W/PRECAST APRON END SECTIONS
0° SKEW, 46'-0" END TO END



FULL SIZE PLANS HAVE BEEN PREPARED USING STANDARD ENGINEERING SCALES. REDUCED SIZED PLANS WILL NOT CONFORM TO STANDARD SCALES. IN MAKING MEASUREMENTS ON REDUCED PLANS, THE ABOVE SCALES MAY BE USED.

J.U.L.I.E.
JOINT UTILITY LOCATION INFORMATION FOR EXCAVATION
1-800-892-0123
OR 811



GROSS LENGTH = 40 FT. = 0.01 MILE
NET LENGTH = 40 FT. = 0.01 MILE

PROJECT ENGINEER EHREN KIRBY
PROJECT MANAGER THOMAS JEFFERSON

CONTRACT NO. 78949

STATE OF ILLINOIS
DEPARTMENT OF TRANSPORTATION

SUBMITTED August 9 20 24
Kirk H. Brown
REGIONAL ENGINEER

October 4, 2024
[Signature]
ENGINEER OF DESIGN AND ENVIRONMENT

October 4, 2024
[Signature]
DIRECTOR OF HIGHWAYS PROJECT IMPLEMENTATION 13

PRINTED BY THE AUTHORITY
OF THE STATE OF ILLINOIS

INDEX OF SHEETS

SHEET NO	DESCRIPTION
1	COVER SHEET
2	SIGNATURE SHEET
3	INDEX OF SHEETS, HIGHWAY STANDARDS, GENERAL NOTES, AND COMMITMENTS
4-7	SUMMARY OF QUANTITIES
8-9	SCHEDULES
10	ALIGNMENT, TIES, AND BENCHMARKS
11	PLAN AND PROFILE
12	GENERAL PLAN AND EROSION CONTROL
13-14	PROPOSED ROW PLAN
15	LIMITS OF POROUS GRANULAR EMBANKMENT AND SECTION WITHIN PAVEMENT REMOVAL
16	FINAL SECTIONS
17-18	PRECAST APRON END SECTION DETAILS
19	GUARDRAIL DESIGN
20-22	DISTRICT STANDARDS
23	DETOUR SIGNING PLAN
24-28	CROSS SECTIONS

GENERAL NOTES

FACTORS USED FOR ESTIMATING PLAN QUANTITIES AREA AS FOLLOWS AND SHALL NOT BE USED AS BASIS OF FINAL QUANTITIES.

ALL AGG	2.05 TONS/CU. YD.
RIPRAP	1.5 TONS/CU. YD.

AT ALL LOCATIONS WHERE THE PROPOSED CONCRETE PAVEMENT JOINS EXISTING CONCRETE PAVEMENT A FULL DEPTH SAWED JOINT SHALL BE CONSTRUCTED. THE COST OF THIS JOINT WILL BE INCLUDED IN THE COST OF THE TYPE OF PAVEMENT BEING CONSTRUCTED.

COMMITMENTS:

NONE

HIGHWAY STANDARDS

000001-08	STANDARD SYMBOLS ABBREVIATIONS
001001-02	AREAS OF REINFORCEMENT BARS
001006	DECIMAL OF AN INCH & OF A FOOT
280001-07	TEMPORARY EROSION CONTROL SYSTEMS
420001-10	PAVEMENT JOINTS
420701-03	PAVEMENT WELDED WIRE REINFORCEMENT
483001-06	PCC SHOULDER
542301-03	PRECAST REINFORCED CONCRETE FLARED END SECTIONS
630001-13	STEEL PLATE BEAM GUARDRAIL
630101-11	STRONG POST GUARDRAIL ATTACHED TO CULVERT
630201-07	PCC/HMA STABILIZATION AT STEEL PLATE BEAM GUARDRAIL
630301-09	SHOULDER WIDENING FOR TYPE 1 (SPECIAL) GUARDRAIL TERMINALS
666001-01	RIGHT OF WAY MARKERS
701001-02	OFF-ROAD OPERATIONS, 2L, 2W, MORE THAN 15' (4.5 m) AWAY
701006-05	OFF-ROAD OPERATIONS, 2L, 2W, 15' (4.5 m) TO 24" (600 mm) FROM PAVEMENT EDGE
701201-05	LANE CLOSURE, 2L, 2W, DAY ONLY, FOR SPEEDS ≥ 45 MPH
701901-09	TRAFFIC CONTROL DEVICES
725001-01	OBJECT AND TERMINAL MARKERS
780001-05	TYPICAL PAVEMENT MARKINGS
782006-01	GUARDRAIL AND BARRIER REFLECTOR MOUNTING DETAILS
BLR21-9	TYPICAL APPLICATION OF TRAFFIC CONTROL DEVICES FOR CONSTRUCTION ON RURAL LOCAL HIGHWAYS
725001-01	OBJECT AND TERMINAL MARKERS

REV - MS

MODEL: Index of Sheets (Sheet)
FILE NAME: c:\pwworkspace\jeffersons\0816471\09\00000-SHB-Index_GenNotes.dgn

USER NAME = thomas.jefferson	DESIGNED -	REVISED -
	DRAWN -	REVISED -
	CHECKED -	REVISED -
PLOT DATE = 8/8/2024	DATE -	REVISED -

**STATE OF ILLINOIS
DEPARTMENT OF TRANSPORTATION**

**INDEX OF SHEETS, HIGHWAY STANDARDS,
GENERAL NOTES, AND COMMITMENTS**

SCALE: SHEET OF 1 SHEETS STA. TO STA.

F.A.P. RTE.	SECTION	COUNTY	TOTAL SHEETS	SHEET NO.
329	19CR-1	PERRY	28	3
CONTRACT NO. 78949				
ILLINOIS FED. AID PROJECT				

SUMMARY OF QUANTITIES

COUNTY:	PERRY CO
ROUTE:	FAP 329
FUNDING:	80% FEDERAL 20% STATE
LOCATION:	RURAL
	ROADWAY
	0004

CODE NUMBER	ITEM DESCRIPTION	UNIT	QUANTITY
20200100	EARTH EXCAVATION	CU YD	633
20300100	CHANNEL EXCAVATION	CU YD	28
20700220	POROUS GRANULAR EMBANKMENT	CU YD	200
25000200	SEEDING, CLASS 2	ACRE	0.19
25000350	SEEDING, CLASS 7	ACRE	0.19
25000400	NITROGEN FERTILIZER NUTRIENT	POUND	18
25000500	PHOSPHORUS FERTILIZER NUTRIENT	POUND	18
25000600	POTASSIUM FERTILIZER NUTRIENT	POUND	18
25000700	AGRICULTURAL GROUND LIMESTONE	TON	0.4
25100630	EROSION CONTROL BLANKET	SQ YD	906
28000250	TEMPORARY EROSION CONTROL SEEDING	POUND	19
28000400	PERIMETER EROSION BARRIER	FOOT	642
28100107	STONE RIPRAP, CLASS A4	SQ YD	101
28200200	FILTER FABRIC	SQ YD	101

MODEL: SUMMARY OF QUANTITIES-1 (Sheet)
FILE NAME: c:\p\work\perry\jeffersons\08184741D9xxxx-SHIC-SoQ.dgn

SUMMARY OF QUANTITIES - CONT

COUNTY:	PERRY CO
ROUTE:	FAP 329
FUNDING:	80% FEDERAL 20% STATE
LOCATION:	RURAL
	ROADWAY
	0004

CODE NUMBER	ITEM DESCRIPTION	UNIT	QUANTITY
40201000	AGGREGATE FOR TEMPORARY ACCESS	TON	28
42000060	WELDED WIRE REINFORCEMENT	SQ YD	116
42000500	PORTLAND CEMENT CONCRETE PAVEMENT 10"	SQ YD	116
42300200	PORTLAND CEMENT CONCRETE DRIVEWAY PAVEMENT, 6 INCH	SQ YD	20
44000100	PAVEMENT REMOVAL	SQ YD	116
44000200	DRIVEWAY PAVEMENT REMOVAL	SQ YD	20
48300300	PORTLAND CEMENT CONCRETE SHOULDERS 8"	SQ YD	304
50100300	REMOVAL OF EXISTING STRUCTURES NO. 1	EACH	1
50105220	PIPE CULVERT REMOVAL	FOOT	40
50200450	REMOVAL AND DISPOSAL OF UNSUITABLE MATERIAL FOR STRUCTURES	CU YD	97
54001001	BOX CULVERT END SECTIONS, CULVERT NO. 1	EACH	2
54011206	PRECAST CONCRETE BOX CULVERTS 12' X 6'	FOOT	40
542A0223	PIPE CULVERTS, CLASS A, TYPE 1 18"	FOOT	40
54213663	PRECAST REINFORCED CONCRETE FLARED END SECTIONS 18"	EACH	2

MODEL: SUMMARY OF QUANTITIES-2 (Sheet)
FILE NAME: c:\ppl_work\pwrtd\jeffersons\08184741D9xxxxx-SHC-SoQ.dgn

SUMMARY OF QUANTITIES - CONT

COUNTY:	PERRY CO
ROUTE:	FAP 329
FUNDING:	80% FEDERAL 20% STATE
LOCATION:	RURAL
	ROADWAY
	0004

CODE NUMBER	ITEM DESCRIPTION	UNIT	QUANTITY
59100100	GEOCOMPOSITE WALL DRAIN	SQ YD	78
* 63000001	STEEL PLATE BEAM GUARDRAIL, TYPE A, 6 FOOT POSTS	FOOT	150
* 63000030	STRONG POST GUARDRAIL ATTACHED TO CULVERT	FOOT	44
* 63100167	TRAFFIC BARRIER TERMINAL, TYPE 1 (SPECIAL) TANGENT	EACH	3
* 63100169	TRAFFIC BARRIER TERMINAL, TYPE 1 (SPECIAL) FLARED	EACH	1
63200310	GUARDRAIL REMOVAL	FOOT	273
66600105	FURNISHING AND ERECTING RIGHT OF WAY MARKERS	EACH	8
67000400	ENGINEER'S FIELD OFFICE, TYPE A	CAL MO	1
67100100	MOBILIZATION	L SUM	1
70100450	TRAFFIC CONTROL AND PROTECTION, STANDARD 701201	L SUM	1
70103815	TRAFFIC CONTROL SURVEILLANCE	CAL DA	3
70107025	CHANGEABLE MESSAGE SIGN	CAL DA	42
70300100	SHORT TERM PAVEMENT MARKING	FOOT	8
70300150	SHORT TERM PAVEMENT MARKING REMOVAL	SQ FT	3

* SPECIALTY ITEM

MODEL: SUMMARY OF QUANTITIES-3 (Sheet)
FILE NAME: c:\p\work\perry\jeffersons\08184741D9\perry-SUM-SoQ.dgn

USER NAME = thomas.jefferson	DESIGNED -	REVISED -
	DRAWN -	REVISED -
	CHECKED -	REVISED -
PLOT DATE = 8/14/2024	DATE -	REVISED -

**STATE OF ILLINOIS
DEPARTMENT OF TRANSPORTATION**

SUMMARY OF QUANTITIES

SCALE: SHEET 3 OF 4 SHEETS STA. TO STA.

F.A.P. RTE.	SECTION	COUNTY	TOTAL SHEETS	SHEET NO.
329	19CR-1	PERRY	28	6
CONTRACT NO. 78949				
ILLINOIS FED. AID PROJECT				

SUMMARY OF QUANTITIES - CONT

COUNTY:	PERRY CO
ROUTE:	FAP 329
FUNDING:	80% FEDERAL 20% STATE
LOCATION:	RURAL
	ROADWAY
	0004

CODE NUMBER	ITEM DESCRIPTION	UNIT	QUANTITY
* 72501000	TERMINAL MARKER - DIRECT APPLIED	EACH	4
* 78001110	PAINT PAVEMENT MARKING - LINE 4"	FOOT	533
* 78200005	GUARDRAIL REFLECTORS, TYPE A	EACH	8
X5810103	MEMBRANE WATERPROOFING SYSTEM FOR BURIED STRUCTURES	SQ YD	78
X7011800	TRAFFIC CONTROL AND PROTECTION, STANDARD BLR 21	L SUM	1
Z0016702	DETOUR SIGNING	L SUM	1
* Z0054517	ROCK FILL - FOUNDATION	TON	118

* SPECIALTY ITEM

REV - MS

MODEL: SUMMARY OF QUANTITIES-I (Sheet)
FILE NAME: c:\p\work\perry\jeffersons\008184741D9xxxxx-SHC-SoQ.dgn

USER NAME = thomas.jefferson	DESIGNED -	REVISED -	STATE OF ILLINOIS DEPARTMENT OF TRANSPORTATION	SUMMARY OF QUANTITIES	F.A.P. RTE.	SECTION	COUNTY	TOTAL SHEETS	SHEET NO.	
	DRAWN -	REVISED -			329	19CR-1	PERRY	28	7	
	CHECKED -	REVISED -			CONTRACT NO. 78949					
PLOT DATE = 8/7/2024	DATE -	REVISED -			SCALE:	SHEET 4	OF 4	SHEETS	STA.	TO STA.

PAVEMENT SCHEDULE

LOCATION STATION TO STATION	LENGTH	ROADWAY WIDTH	AREA	PAVEMENT REMOVAL	PORTLAND CEMENT CONCRETE PAVEMENT 10"	WELDED WIRE REINFORCEMENT	REMARKS
	FOR INFORM. PURPOSES ONLY						
	FT	FT	SQ FT	SQ YD	SQ YD	SQ YD	
IL 154 - SN 073-7048(E) / SN 073-7091(P)							
STA 530+64.00 TO STA 531+04.00	40	26	1040.0	116	116	116	
PROJECT TOTALS				116	116	116	

SHOULDER SCHEDULE

LOCATION	LENGTH	PROPOSED SHOULDER WIDTH	PCC SHOULDERS	REMARKS
	FOR INFORMATIONAL PURPOSES ONLY			
	FT	FT	SQ YD	
IL 154 - SN 073-7048(E) / SN 073-7091 (P)				
STA 530+13.47 LT TO STA 531+44.18 LT	130.7	6.00	88	
STA 531+44.18 LT TO STA 532+27.65 LT	83.5	VARIES	59	
STA 529+14.30 RT TO STA 531+54.70 RT	240.4	6.00	157	
PROJECT TOTALS			304	

GUARDRAIL SCHEDULE

LOCATION (IL 154)	STEEL PLATE BEAM GUARDRAIL TYPE A, 6 FOOT POSTS	STRONG POST GUARDRAIL ATTACHED TO CULVERT	TRAFFIC BARRIER TERMINAL, TYPE 1 (SPECIAL) TANGENT	TRAFFIC BARRIER TERMINAL, TYPE 1 (SPECIAL) FLARED	GUARDRAIL REMOVAL	TERMINAL MARKER - DIRECT APPLIED	GUARDRAIL REFLECTORS, TYPE A
	FOOT	FOOT	EACH		FOOT	EACH	EACH
SN 073-7048(E)/SN 073-7091(P)							
STA 530+23.1 LT TO STA 531+94.9 LT	50.0	22	1	1	136	2	4
STA 529+23.1 RT TO STA 531+45.0 RT	100.0	22	2		137	2	4
PROJECT TOTALS	150	44	3	1	273	4	8

MODEL: SCHEDULE (Sheet)
FILE NAME: c:\p\work\evr\td\jeffersons\08184741D9\xxxx-SHE-Schedules.dgn

USER NAME = thomas.jefferson	DESIGNED -	REVISED -
	DRAWN -	REVISED -
PLOT SCALE = \$SCALE\$	CHECKED -	REVISED -
PLOT DATE = 8/7/2024	DATE -	REVISED -

**STATE OF ILLINOIS
DEPARTMENT OF TRANSPORTATION**

SCHEDULE OF QUANTITIES

SCALE: SHEET 1 OF 2 SHEETS STA. TO STA.

F.A.P RTE.	SECTION	COUNTY	TOTAL SHEETS	SHEET NO.
329	19CR-1	PERRY	28	8
CONTRACT NO. 78949				
ILLINOIS FED. AID PROJECT				

EARTHWORK SCHEDULE

LOCATION STATION TO STATION	EARTH EXCAVATION CU YD	CHANNEL EXCAVATION CU YD	FOR INFORMATION ONLY					BALANCE SWELL FACTOR (BORROW ONLY)	BORROW EXCAVATION CU YD	REMARKS
			RECYCLED WASTE CU YD	AVERAGE SHRINKAGE FACTOR	EARTH EXCAVATION (ADJUSTED) CU YD	EARTH EMBANKMENT CU YD	EARTH BALANCE WASTE (+) SHORTAGE (-) CU YD			
530+67.00 TO 531+07.00	200	28							EARTH EXCAVATION FOR BOX & P.G.E	
529+00.44 TO 532+27.64	433			0.85	368	130	238			
IMPROVEMENT TOTALS:	633	28	0		368	130	238	0		

SEEDING SCHEDULE

LOCATION (IL 154)	CLASS 2 SEEDING	CLASS 7 SEEDING	NITROGEN FERTILIZER	PHOSPHORUS FERTILIZER	POTASSIUM FERTILIZER	AG GROUND LIMESTONE	EROSION CONTROL BLANKET	TEMP EROSION CONTROL SEEDING	PERIMETER EROSION CONTROL BARRIER
	ACRE	ACRE	POUND	POUND	POUND	TON	SQ YD	POUND	FOOT
SN 073-7048(E)/SN 073-7091(P)									
North/Downstream End	0.15	0.15	14	14	14	0.3	711.5	15	320
South/Upstream End	0.04	0.04	4	4	4	0.1	194.0	4	322
PROJECT TOTALS	0.19	0.19	18	18	18	0.4	906	19	642

PAVEMENT MARKING SCHEDULE

START STATION	END STATION	NOTES	PAINT PAVEMENT MARKING				SHORT TERM PAVEMENT MARKING	SHORT TERM PAVEMENT MARKING REMOVAL
			LINE - 4" WHITE	LINE - 4" YELLOW			LINE - 4" YELLOW	
			SOLID	SOLID LT	SKIP - DASH	SOLID RT	SKIP - DASH	
			FT	FT	FT	FT	FT	
IL 154 - SN 073-7048 (E) / SN 073-7091 (P)								
530+64.00	531+04.00	CENTERLINE					8	3
529+14.30	532+27.65	CENTERLINE			78			
530+13.47	532+27.65	LEFT EDGELINE	214					
529+14.30	531+54.70	RIGHT EDGELINE	240					
PROJECT TOTALS			533				8	3

MODEL: SCHEDULE-1 (Sheet)
FILE NAME: c:\p\work\pwr\td\jeffersons\08184741D9\xxxxx-SHE-Schedules.dgn

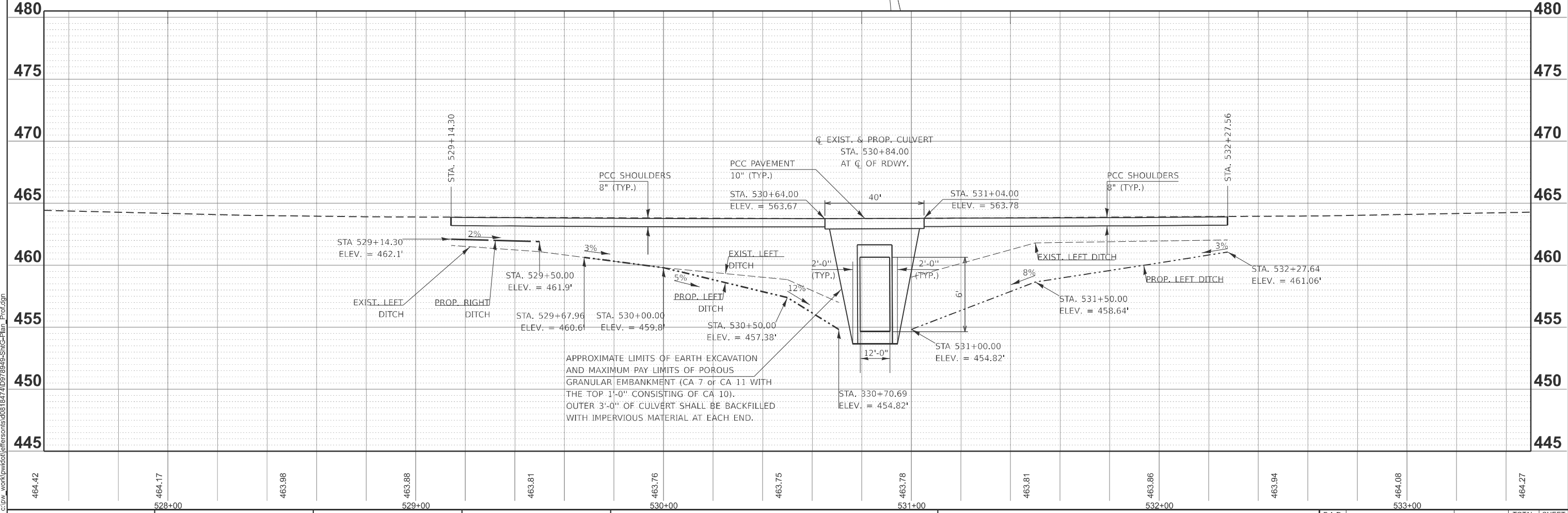
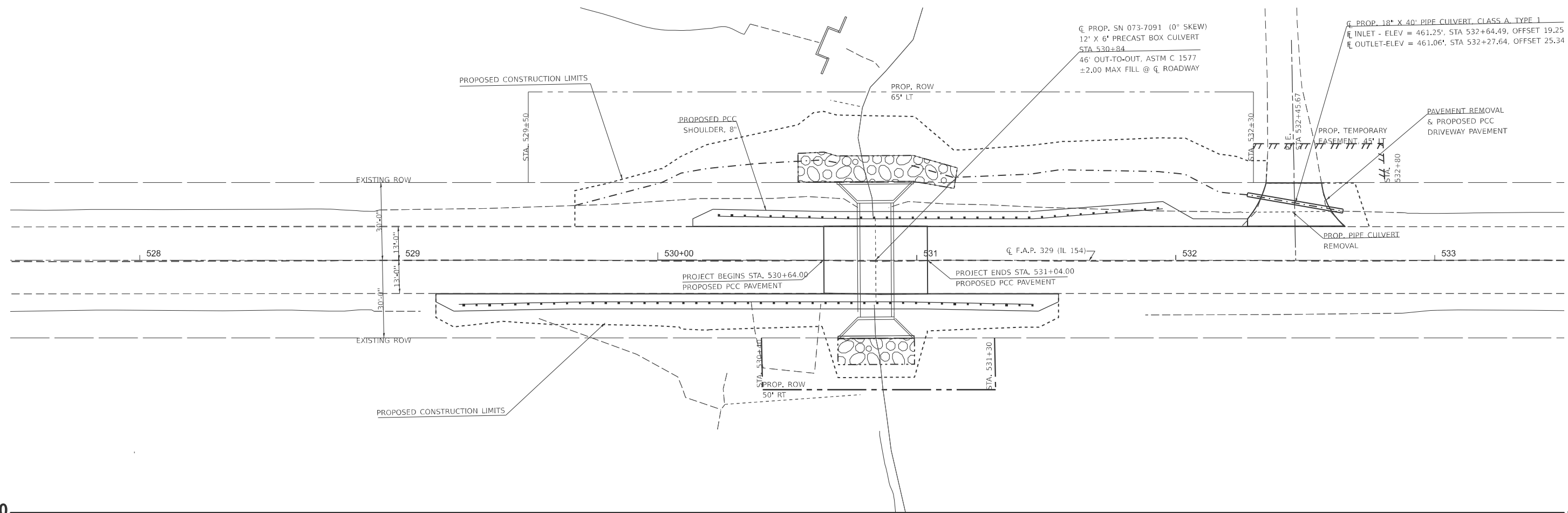
USER NAME = thomas.jefferson	DESIGNED -	REVISED -
	DRAWN -	REVISED -
PLOT SCALE = \$SCALE\$	CHECKED -	REVISED -
PLOT DATE = 8/7/2024	DATE -	REVISED -

**STATE OF ILLINOIS
DEPARTMENT OF TRANSPORTATION**

SCHEDULE OF QUANTITIES

SCALE: SHEET 2 OF 2 SHEETS STA. TO STA.

F.A.P RTE.	SECTION	COUNTY	TOTAL SHEETS	SHEET NO.
329	19CR-1	PERRY	28	9
CONTRACT NO. 78949				
ILLINOIS FED. AID PROJECT				



MODEL: IL154_A-Plan 1-1 (Sheet)
 FILE NAME: c:\pwworking\jeffersons\0818474109\78949-ShtC-Plan_Prof.dgn

USER NAME = thomas.jefferson	DESIGNED -	REVISED -
	DRAWN -	REVISED -
	CHECKED -	REVISED -
PLOT DATE = 8/12/2024	DATE -	REVISED -

STATE OF ILLINOIS
DEPARTMENT OF TRANSPORTATION

PLAN AND PROFILE
 SCALE: 1"=20'
 SHEET OF 5 SHEETS STA. 527+50.00 R2 TO STA. 533+50.00 R2

F.A.P. RTE. 329	SECTION 19CR-1	COUNTY PERRY	TOTAL SHEETS 28	SHEET NO. 11
CONTRACT NO. 78949				
ILLINOIS FED. AID PROJECT				

SURVEYOR NOTES

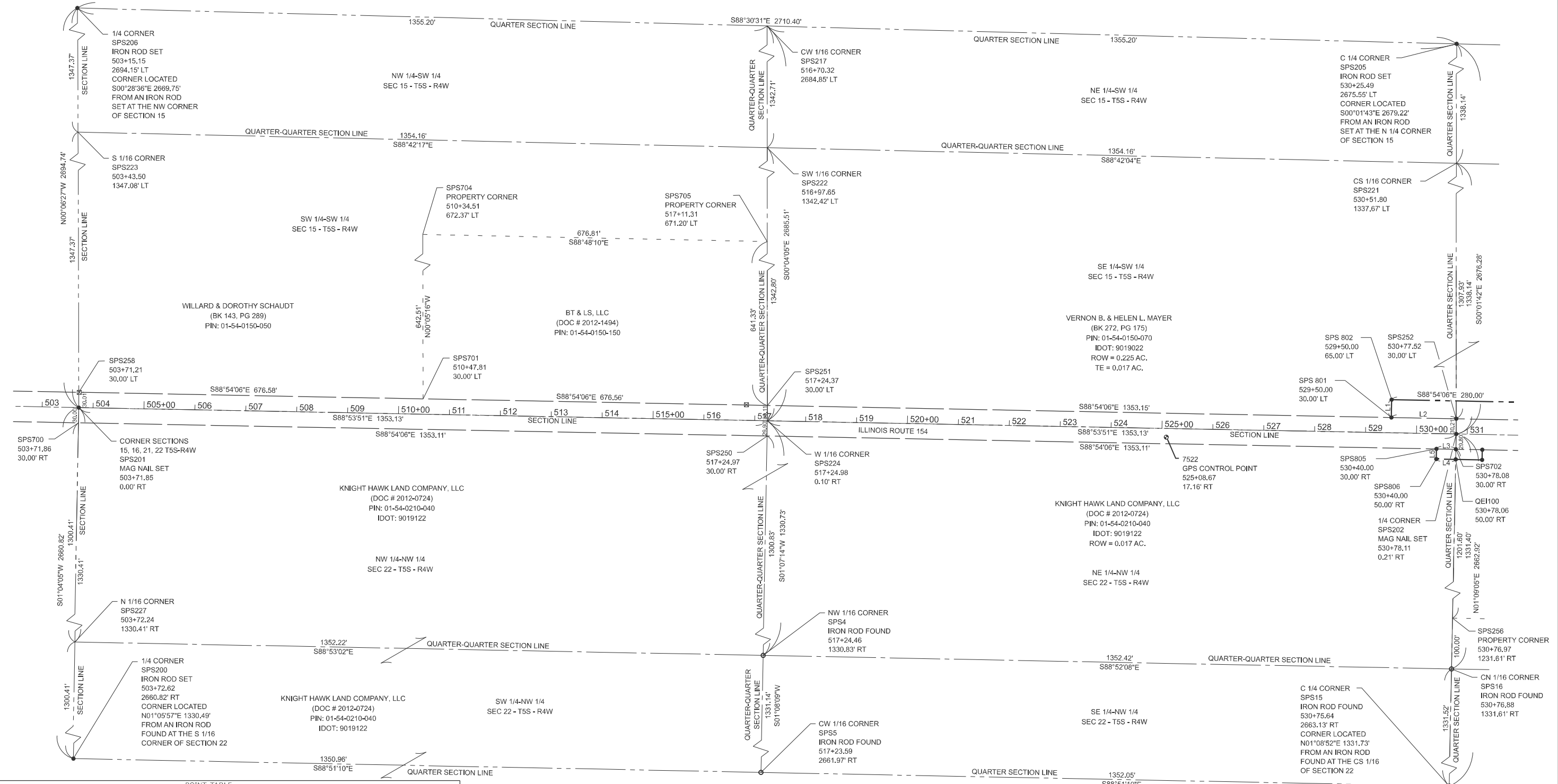
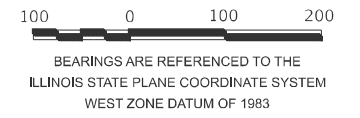
1. REFERENCE IS MADE TO A SURVEY BY ABERNATHY (SPS), IPLS 3536, FOR CONSOL ENERGY INC. DATED JUNE 6, 2011.
2. REFERENCE IS MADE TO A SURVEY BY SLAPAK, IPLS 2660, FOR CONSOLIDATION COAL COMPANY DATED 5/6/2005.
3. REFERENCE IS MADE TO A SURVEY BY SLAPAK, IPLS 2660, FOR CONSOLIDATION COAL COMPANY DATED 4/26/2005.
4. REFERENCE IS MADE TO A SURVEY BY SLAPAK, IPLS 2660, FOR CONSOLIDATION COAL COMPANY DATED 5/6/2005.
5. REFERENCE IS MADE TO A SURVEY BY SLAPAK, IPLS 2660, FOR CONSOLIDATION COAL COMPANY DATED 11/25/2006.
6. REFERENCE IS MADE TO A SURVEY (SE-NE-22) BY SLAPAK, IPLS 2660, FOR CONSOLIDATION COAL COMPANY DATED 11/30/2006.
7. REFERENCE IS MADE TO A SURVEY (NW-NE-22) BY SLAPAK, IPLS 2660, FOR CONSOLIDATION COAL COMPANY DATED 11/30/2006.
8. REFERENCE IS MADE TO A SURVEY (SW-NW-22) BY SLAPAK, IPLS 2660, FOR CONSOLIDATION COAL COMPANY DATED 11/30/2006.
9. REFERENCE IS MADE TO A SURVEY (NW-NE-23) BY SLAPAK, IPLS 2660, FOR CONSOLIDATION COAL COMPANY DATED 11/30/2006.

LINE	POINT TO POINT	BEARING	DISTANCE
L1	SPS801 - SPS802	N01°05'54"E	35.00'
L2	SPS252 - SPS801	N88°54'06"W	127.51'
L3	SPS805 - SPS702	S88°54'06"E	38.08'
L4	QEH100 - SPS806	N88°54'06"W	38.06'
L5	SPS806 - SPS805	N01°05'54"E	20.00'

LEGEND

- SURVEY MONUMENT FOUND
- SURVEY MONUMENT SET
- ⊙ G.P.S. CONTROL POINT
- ⊞ RIGHT OF WAY MARKER
- SECTION LINE
- - - QUARTER SECTION LINE
- - - QUARTER QUARTER SECTION LINE
- PROPERTY LINE
- - - ROADWAY ALIGNMENT LINE
- EXISTING RIGHT OF WAY LINE
- - - EASEMENT LINE

SURVEYORS CERTIFICATE
 THIS PROFESSIONAL SERVICE CONFORMS TO THE CURRENT ILLINOIS MINIMUM STANDARDS OF PRACTICE APPLICABLE TO BOUNDARY SURVEYS.
 DATE: _____ SIGNED: _____
 ILLINOIS PROFESSIONAL LAND SURVEYOR
 BILLY J. ABERNATHY, NO. 3536
 LICENSE EXPIRES 11/30/2024



Point	North	East	Station	Offset	Feature	Description
QEH100	517541.17	2480416.18	530+78.06	50.00	211	CALCULATED POINT
SPS4	516286.52	2479038.28	517+24.46	1330.83	202	NW 1/16 CORNER 1/2 IRF
SPS5	514955.64	2479011.90	517+23.59	2661.97	202	CW 1/16 CORNER 1/2 IRF
SPS15	514928.57	2480363.68	530+75.64	2663.13	201	C 1/4 CORNER IRF 1/2
SPS16	514259.82	2480390.44	530+76.88	1331.61	202	CN 1/16 CORNER IRF 1/2
SPS200	514982.69	2477661.21	503+72.62	2660.82	201	1/4 CORNER IRS
SPS201	517643.03	2477711.43	503+71.85	0.00	200	SECTION CORNER MAG NAIL SET
SPS202	517590.96	2480417.19	530+78.11	0.21	201	1/4 CORNER MAG NAIL SET
SPS205	520267.23	2480415.86	530+25.49	-2675.55	201	C 1/4 CORNER IRS
SPS206	520337.77	2477706.38	503+15.15	-2694.16	201	1/4 CORNER IRS
SPS217	520302.50	2479061.12	516+70.32	-2684.85	202	CW 1/16 CORNER

Point	North	East	Station	Offset	Feature	Description
SPS221	518929.09	2480416.53	530+51.80	-1337.67	202	CS 1/16 CORNER
SPS222	518959.79	2479062.72	516+97.65	-1342.42	202	SW 1/16 CORNER
SPS223	518990.40	2477708.90	503+43.50	-1347.08	202	S 1/16 CORNER
SPS224	517616.99	2479064.31	517+24.98	0.10	202	W 1/16 CORNER
SPS227	516312.86	2477686.32	503+72.24	1330.41	202	N 1/16 CORNER
SPS250	517587.10	2479063.73	517+24.97	30.00	211	R.O.W. CORNER
SPS251	517647.10	2479064.28	517+24.37	-30.00	211	R.O.W. CORNER
SPS252	517621.17	2480417.18	530+77.52	-30.00	211	R.O.W. CORNER
SPS256	516359.80	2480392.45	530+76.97	1231.61	206	PROPERTY CORNER
SPS258	517673.04	2477711.37	503+71.21	-30.00	211	R.O.W. CORNER

Point	North	East	Station	Offset	Feature	Description
SPS700	517613.04	2477710.86	503+71.86	30.00	211	R.O.W. CORNER
SPS701	517660.07	2478387.84	510+47.81	-30.00	211	R.O.W. CORNER
SPS702	517561.17	2480416.59	530+78.08	30.00	211	R.O.W. CORNER
SPS704	518302.57	2478386.85	510+34.51	-672.37	206	PROPERTY CORNER
SPS705	518288.43	2479063.51	517+11.31	-671.20	206	PROPERTY CORNER
7522	517584.82	2479847.53	525+08.67	17.16	112	GPS CONTROL POINT
SPS801	517623.61	2480289.68	529+50.00	-30.00	111	SURVEY MONUMENT SET
SPS802	517658.60	2480290.35	529+50.00	-65.00	111	SURVEY MONUMENT SET
SPS805	517561.90	2480378.52	530+40.00	30.00	111	SURVEY MONUMENT SET
SPS806	517541.90	2480378.13	530+40.00	50.00	111	SURVEY MONUMENT SET

USER NAME = thomas.jefferson PLOT SCALE = \$SCALE\$ PLOT DATE = 8/12/2024	DESIGNED - DRAWN - CHECKED - DATE -	REVISED - REVISED - REVISED - REVISED -	STATE OF ILLINOIS DEPARTMENT OF TRANSPORTATION
---	--	--	--

SCALE: 1"=100'	SHEET 13 OF 28 SHEETS	STA. 503+00 TO STA. 531+00	ILLINOIS FED. AID PROJECT
----------------	-----------------------	----------------------------	---------------------------

F.A.P. RTE. 329	SECTION 19C-1	COUNTY PERRY	TOTAL SHEETS 26 SHEET NO. 13
CONTRACT NO. 78949			

LEGEND

- SURVEY MONUMENT FOUND
- SURVEY MONUMENT SET
- ⊕ G.P.S. CONTROL POINT
- ⊗ RIGHT OF WAY MARKER
- SECTION LINE
- - - QUARTER SECTION LINE
- - - QUARTER QUARTER SECTION LINE
- - - PROPERTY LINE
- - - ROADWAY ALIGNMENT LINE
- - - EXISTING RIGHT OF WAY LINE
- - - EASEMENT LINE

SURVEYOR NOTES

1. REFERENCE IS MADE TO A SURVEY BY ABERNATHY (SPS), IPLS 3536, FOR CONSOL ENERGY INC. DATED JUNE 6, 2011.
2. REFERENCE IS MADE TO A SURVEY BY SLAPAK, IPLS 2660, FOR CONSOLIDATION COAL COMPANY DATED 5/6/2005.
3. REFERENCE IS MADE TO A SURVEY BY SLAPAK, IPLS 2660, FOR CONSOLIDATION COAL COMPANY DATED 4/26/2005.
4. REFERENCE IS MADE TO A SURVEY BY SLAPAK, IPLS 2660, FOR CONSOLIDATION COAL COMPANY DATED 5/6/2005.
5. REFERENCE IS MADE TO A SURVEY BY SLAPAK, IPLS 2660, FOR CONSOLIDATION COAL COMPANY DATED 11/25/2006.
6. REFERENCE IS MADE TO A SURVEY (SE-NE-22) BY SLAPAK, IPLS 2660, FOR CONSOLIDATION COAL COMPANY DATED 11/30/2006.
7. REFERENCE IS MADE TO A SURVEY (NW-NE-22) BY SLAPAK, IPLS 2660, FOR CONSOLIDATION COAL COMPANY DATED 11/30/2006.
8. REFERENCE IS MADE TO A SURVEY (SW-NW-22) BY SLAPAK, IPLS 2660, FOR CONSOLIDATION COAL COMPANY DATED 11/30/2006.
9. REFERENCE IS MADE TO A SURVEY (NW-NE-23) BY SLAPAK, IPLS 2660, FOR CONSOLIDATION COAL COMPANY DATED 11/30/2006.

LINE	POINT TO POINT	BEARING	DISTANCE
L6	SPS804 - SPS809	S01°05'54"W	20.00'
L7	SPS809 - SPS810	S88°54'06"E	50.00'
L8	SPS810 - SPS811	S01°05'54"W	15.00'
L9	SPS807-SPS808	S01°05'54"W	20.00'
L10	QE1100-SPS808	N88°54'06"W	51.94'
L11	SPS804-SPS803	S01°05'54"W	35.00'
L12	QE1100-SPS808	N88°54'06"W	50.00'
L13	SPS803-SPS252	N88°54'06"W	152.49'
L14	SPS702-SPS807	S88°54'06"E	51.92'

100 0 100 200

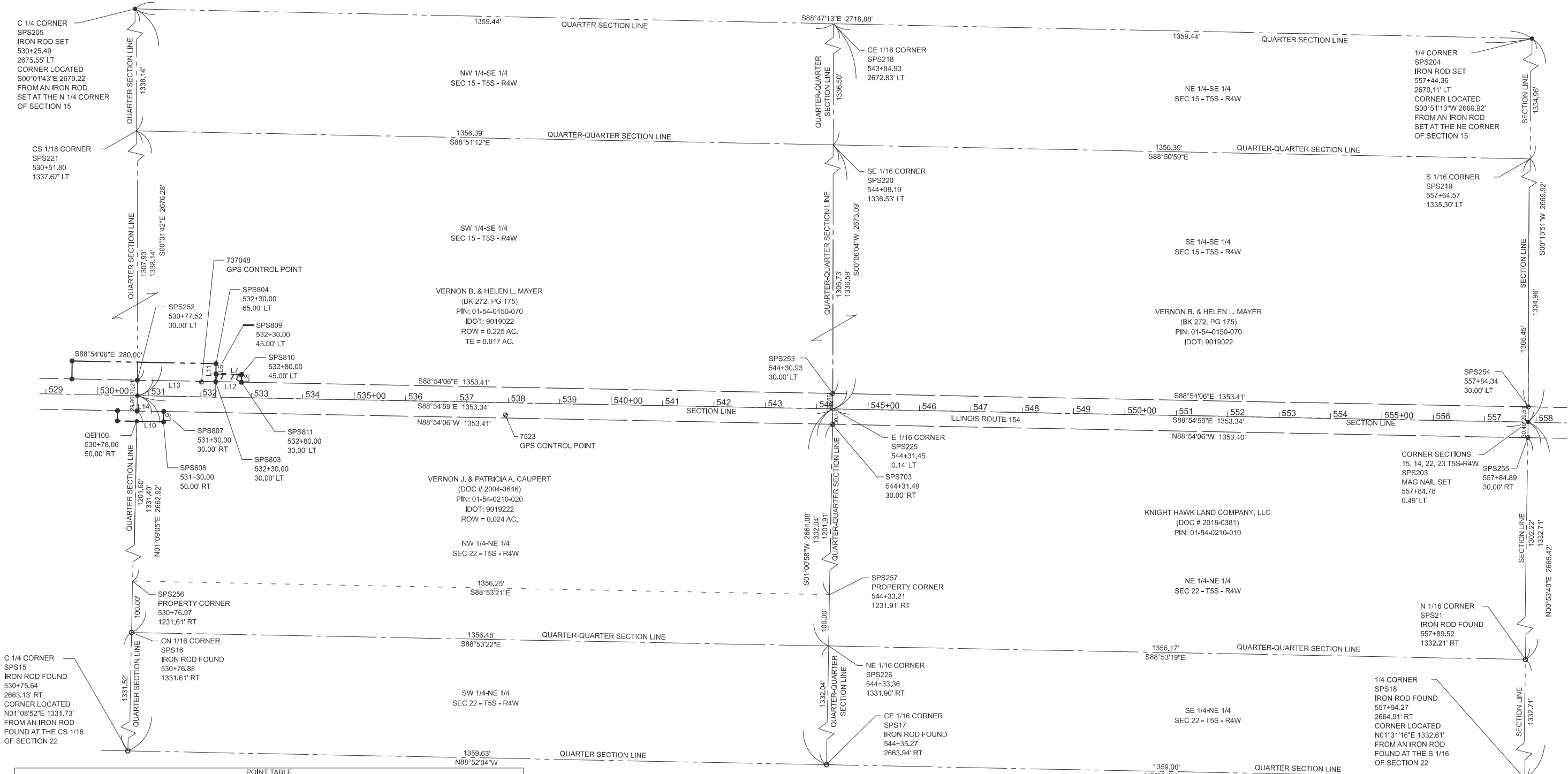
BEARINGS ARE REFERENCED TO THE ILLINOIS STATE PLANE COORDINATE SYSTEM WEST ZONE DATUM OF 1983



SURVEYORS CERTIFICATE

THIS PROFESSIONAL SERVICE CONFORMS TO THE CURRENT ILLINOIS MINIMUM STANDARDS OF PRACTICE APPLICABLE TO BOUNDARY SURVEYS.

DATE: _____ SIGNED: _____
 ILLINOIS PROFESSIONAL LAND SURVEYOR
 BILLY J. ABERNATHY, NO. 3536
 LICENSE EXPIRES 11/30/2024



Point	North	East	Station	Offset	Feature	Description
SPS15	514928.57	2480363.68	530+75.64	2663.13	201	C 1/4 CORNER IRF 1/2
SPS16	516259.82	2480390.44	530+76.88	1331.61	202	CN 1/16 CORNER IRF 1/2
SPS17	514901.70	2481723.04	544+35.27	2663.93	202	CE 1/16 CORNER IRF 1/2
SPS18	514874.69	2483081.77	557+94.27	2664.90	201	1/4 CORNER IRF 1/2
SPS21	516207.23	2483102.58	557+89.52	1332.21	202	N 1/16 CORNER IRF 1/2
SPS202	517590.96	2480417.19	530+78.11	0.21	201	1/4 CORNER MAG NAIL SET
SPS203	517539.77	2483123.38	557+84.78	-0.49	201	SECTION CORNER MAG NAIL SET
SPS204	520209.67	2483134.13	557+44.36	-2670.11	201	1/4 CORNER IRS
SPS205	520267.23	2480415.86	530+25.49	-2675.55	201	C 1/4 CORNER IRS
SPS218	520238.45	2481775.00	543+84.93	-2672.83	202	CE 1/16 CORNER
SPS219	518874.72	2483128.76	557+64.57	-1335.30	202	S 1/16 CORNER
SPS220	518901.95	2481772.64	544+08.19	-1336.53	202	SE 1/16 CORNER

Point	North	East	Station	Offset	Feature	Description
SPS221	518929.09	2480416.53	530+51.80	-1337.67	202	CS 1/16 CORNER
SPS225	517565.36	2481770.28	544+31.45	-0.14	202	E 1/16 CORNER
SPS226	516233.53	2481746.66	544+33.36	1331.90	202	NE 1/16 CORNER
SPS252	517621.17	2480417.18	530+77.52	-30.00	211	R.O.W. CORNER
SPS253	517595.23	2481770.34	544+30.93	-30.00	211	R.O.W. CORNER
SPS254	517569.29	2483123.50	557+84.34	-30.00	211	R.O.W. CORNER
SPS255	517509.29	2483122.90	557+84.89	30.00	211	R.O.W. CORNER
SPS256	516359.80	2480392.45	530+76.97	1231.61	206	PROPERTY CORNER
SPS257	516333.51	2481748.44	544+33.21	1231.91	206	PROPERTY CORNER
SPS702	517561.17	2480416.59	530+78.08	30.00	211	R.O.W. CORNER
SPS703	517535.23	2481769.75	544+31.49	30.00	211	R.O.W. CORNER

Point	North	East	Station	Offset	Feature	Description
7523	517553.58	2481133.69	537+95.19	23.85	112	GPS CONTROL POINT
737048	517617.61	2480542.04	532+02.43	-28.83	112	GPS CONTROL POINT
QE1100	517541.17	2480416.18	530+78.06	50.00	211	CALCULATED POINT
SPS803	517618.24	2480569.63	532+30.00	-30.00	111	SURVEY MONUMENT SET
SPS804	517653.24	2480570.30	532+30.00	-65.00	111	SURVEY MONUMENT SET
SPS807	517560.17	2480468.50	531+30.00	30.00	111	SURVEY MONUMENT SET
SPS808	517540.18	2480468.12	531+30.00	50.00	111	SURVEY MONUMENT SET
SPS809	517633.24	2480569.92	532+30.00	-45.00	111	SURVEY MONUMENT SET
SPS810	517632.28	2480619.91	532+80.00	-30.00	111	SURVEY MONUMENT SET
SPS811	517617.29	2480619.82	532+80.00	-30.00	111	SURVEY MONUMENT SET

USER NAME = thomas.jefferson	DESIGNED -	REVISED -
PLOT SCALE = \$SCALE\$	CHECKED -	REVISED -
PLOT DATE = 8/15/2024	DATE -	REVISED -

**STATE OF ILLINOIS
DEPARTMENT OF TRANSPORTATION**

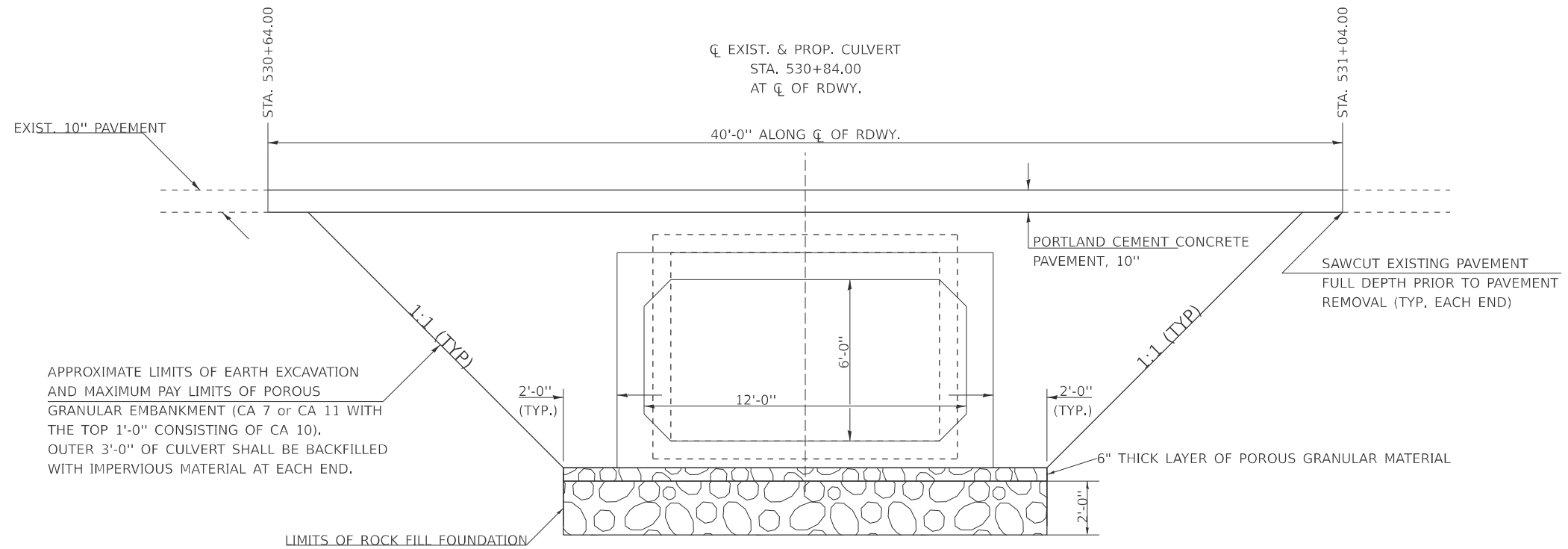
RIGHT OF WAY PLANS

SCALE: 1"=100' SHEET 14 OF 28 SHEETS STA. 529+00 TO STA. 558+00

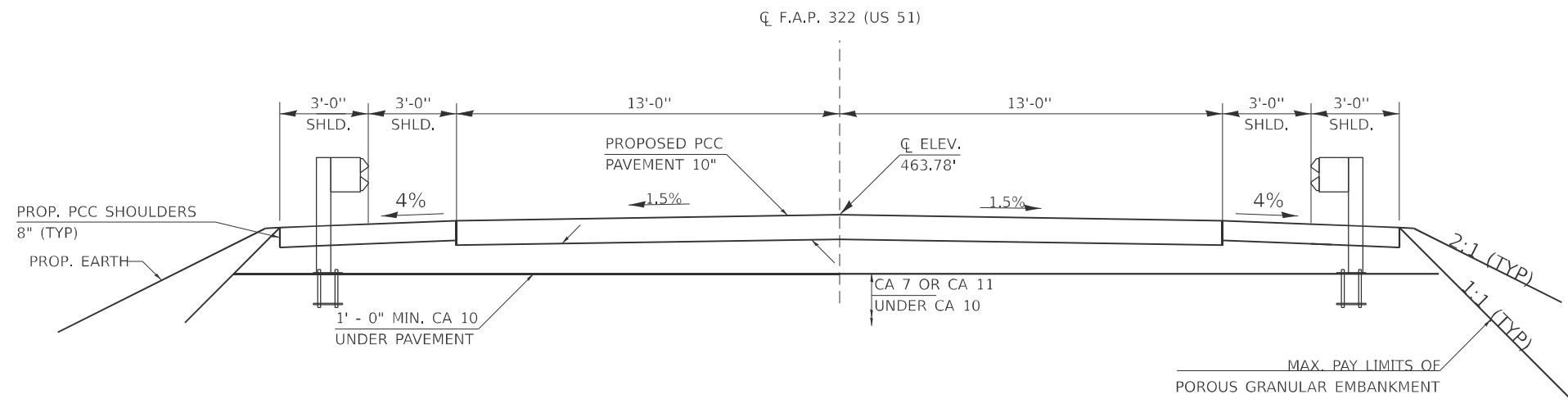
F.A.P. RTE.	SECTION	COUNTY	TOTAL SHEETS	SHEET NO.
329	19CR-1	PERRY	26	14
CONTRACT NO. 78949				
ILLINOIS FED. AID PROJECT				

MODEL: ROW (Sheet 2 of 28) FILE NAME: P:\GIS\Projects\DOT\Office\Direct\BORD\Project\78949\CADD\Drawings\DOT\78949-ROW_Sheet_Update.dwg

LIMITS OF POROUS GRANULAR MATERIAL



SECTION WITHIN PAVEMENT REMOVAL



MODEL: LimitsPGE (Sheet)
FILE NAME: c:\p\work\jeffersons\08184741\0978949-Shld-Typicals.dgn

USER NAME = thomas.jefferson	DESIGNED -	REVISED -
	DRAWN -	REVISED -
	CHECKED -	REVISED -
PLOT DATE = 8/5/2024	DATE -	REVISED -

STATE OF ILLINOIS
DEPARTMENT OF TRANSPORTATION

LIMITS OF POROUS GRANULAR EMBANKMENT AND
SECTION WITHIN PAVEMENT REMOVAL

SCALE: SHEET OF 9 SHEETS STA. TO STA.

F.A.P. RTE.	SECTION	COUNTY	TOTAL SHEETS	SHEET NO.
329	19CR-1	PERRY	28	15
CONTRACT NO. 78949				
ILLINOIS FED. AID PROJECT				

FINAL SECTION

GENERAL NOTES

HYDRAULIC DATA

DRAINAGE AREA = 0.44 SQ MI
 DESIGN WATERWAY OPENING = 72 SQ FT
 DESIGN DISCHARGE = 597 CFS
 DESIGN HEADWATER ELEVATION = 462.33 FT
 100 YEAR DISCHARGE = 708 CFS
 100 YEAR HEADWATER ELEVATION = 463.09 FT

DRAIN HOLES SHALL BE PROVIDED ON EXTERIOR CULVERT WALLS FOR EACH PRECAST BOX SEGMENT WITH A CLEAR RISE GREATER THAN 3 FT. THE DRAIN HOLE SHALL BE LOCATED WITHIN 1/3 OF THE CLEAR RISE OF THE BOX CULVERT, SHALL NOT INTERCEPT THE HAUNCH, AND SHALL CONFORM TO THE REQUIREMENTS OF ARTICLE 503.11 OF THE STANDARD SPECIFICATIONS.

THE 6 IN. THICK LAYER OF POROUS GRANULAR MATERIAL REQUIRED FOR THE PRECAST CONCRETE BOX CULVERT PER ARTICLE 540.06 OF THE STANDARD SPECIFICATIONS SHALL ALSO APPLY TO THE CAST-IN-PLACE END SECTIONS. COST OF THE POROUS GRANULAR MATERIAL WILL NOT BE PAID SEPARATELY BUT SHALL BE INCLUDED IN THE UNIT PRICE OF THE WORK FOR WHICH IT IS REQUIRED.

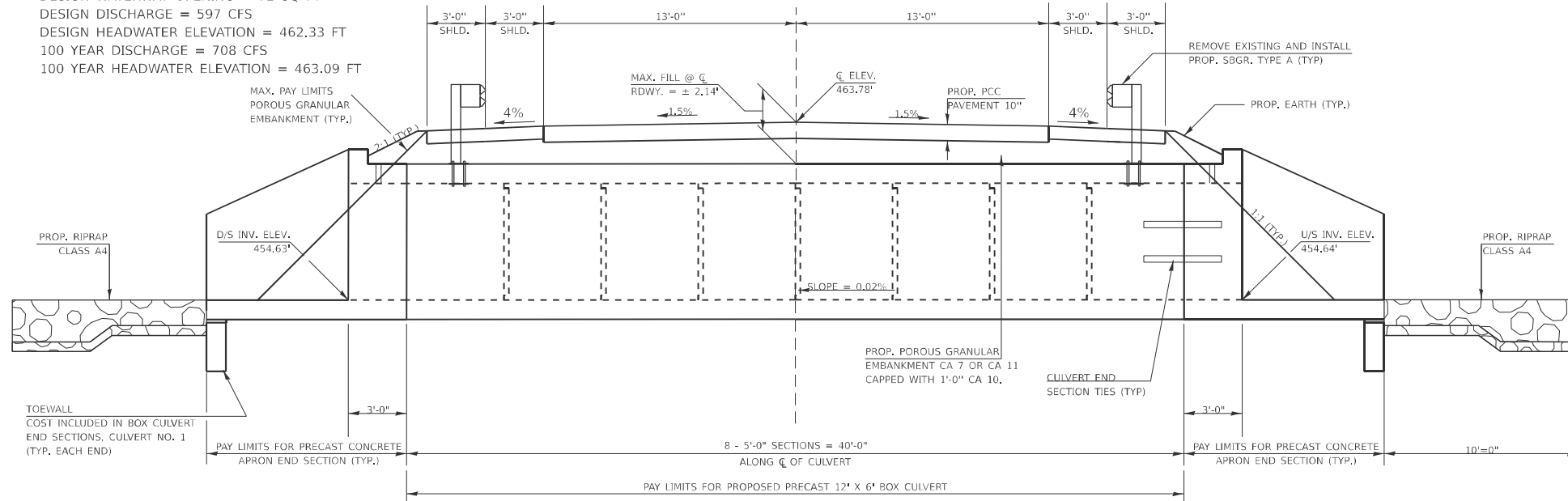
NONWOVEN GEOTEXTILE FABRIC SHALL CONFORM TO THE REQUIREMENTS OF ARTICLE 1080.01 OF THE STANDARD SPECIFICATIONS. THE MINIMUM WEIGHT OF THE FABRIC SHALL BE 6 OUNCES PER SQUARE YARD.

THE REMOVAL OF THE EXISTING BOX CULVERT IS TO BE INCLUDED IN THE COST OF REMOVAL OF EXISTING STRUCTURES.

PRECAST CONCRETE BOX CULVERTS AND BOX CULVERT END SECTIONS SHALL BE BACKFILLED WITH POROUS GRANULAR EMBANKMENT IN THE REQUIRED EXCAVATION AREAS ON THE SIDES OF THE BOX CULVERT FROM THE TOP OF THE BOX CULVERT TO THE BOTTOM OF THE BOX CULVERT. THIS AREA OF PGE IS INCLUDED IN THE POROUS GRANULAR EMBANKMENT PAY ITEM.

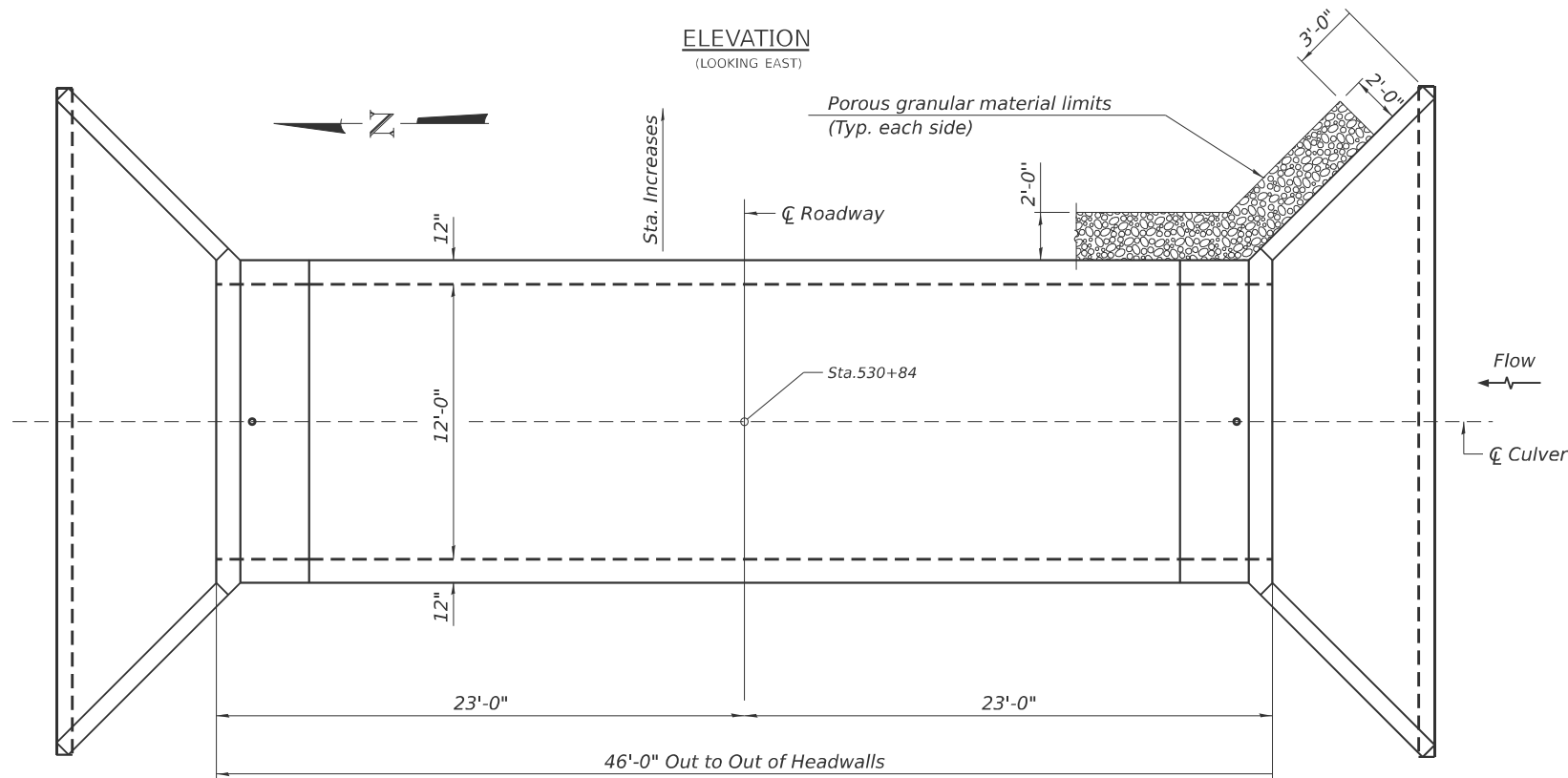
THE LAST TWO PRECAST BARREL SECTIONS AT EACH END SHALL BE TIED TOGETHER USING CULVERT TIES AS SHOWN ON CULVERT TIE DETAILS SHEET. COST INCLUDED IN PRECAST CONCRETE BOX CULVERTS OF THE SIZE SPECIFIED IN THE PLANS.

THE LIMITS AND QUANTITIES OF REMOVAL AND DISPOSAL OF UNSUITABLE MATERIALS SHOWN MAY BE MODIFIED BY THE DISTRICT GEOTECHNICAL AND FIELD ENGINEERS FOR VARIABLE SUBSURFACE CONDITIONS ENCOUNTERED IN THE FIELD. THE MINIMUM UNCONFINED COMPRESSIVE STRENGTH OF THE LAYER BELOW THE REMOVAL LIMIT SHALL BE 1.0 TSF.

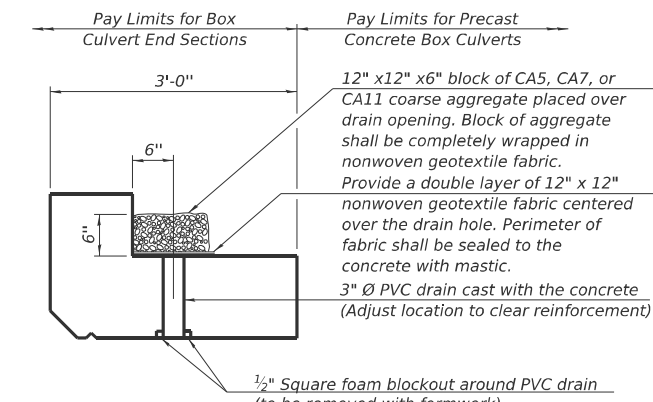


ELEVATION

(LOOKING EAST)

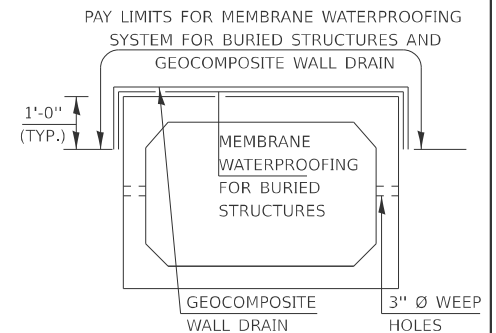


PLAN



DRAIN DETAIL

(All costs associated with furnishing and constructing the above drain detail will not be measured for payment but shall be included in the contract unit price for the associated work.)



PRECAST CONCRETE BOX CULVERT

NOTE: GEOCOMPOSITE WALL DRAIN SHALL BE ACCORDING TO SECTION 591 OF THE STANDARD SPECIFICATIONS, EXCEPT THAT CONCRETE NAILS SHALL NOT BE USED IN AREAS WHERE IT OVERLAPS MEMBRANE WATERPROOFING SYSTEM FOR BURIED STRUCTURES.

DESIGN SPECIFICATIONS
 2020 AASHTO LRFD Bridge Design Specifications
 Customary U.S. Units, 9th Edition

LOADING HL-93

DESIGN STRESSES

PRECAST UNITS

$f_c = 5,000 \text{ psi}$
 $f_y = 65,000 \text{ psi (Welded Wire Reinforcement)}$

BILL OF MATERIAL

ITEM	UNIT	QUANTITY
POROUS GRANULAR EMBANKMENT	CU YD	633
REMOVAL OF EXISTING STRUCTURES NO. 1	EACH	1
REMOVAL AND DISPOSAL OF UNSUITABLE MATERIALS	CU YD	97
BOX CULVERT END SECTIONS, CULVERT NO. 1	EACH	2
PRECAST CONCRETE BOX CULVERTS 12' X 6'	FOOT	40
GEOCOMPOSITE WALL DRAIN	SQ YD	78
STRONG POST GUARDRAIL ATTACHED TO CULVERT	FOOT	44
MEMBRANE WATERPROOFING SYSTEM FOR BURIED STRUCTURES	SQ YD	78
ROCK FILL - FOUNDATION	TON	118

PRECAST BOX CULVERT SCHEDULE (ASTM C 1577)						
STATION	SIZE	SKEW	DESIGN FILL (FT.)		PGE BACKFILL REQUIRED	
			MINIMUM	MAXIMUM		
530+77 TO 530+91	12' X 6'	0°	±1.72'	±2.14'	200 CU YD	

MODEL: FinalSection (Sheet)
 FILE NAME: c:\p\work\kirkby\kirkby\0818474\0978949-ShtD-Typicals.dgn

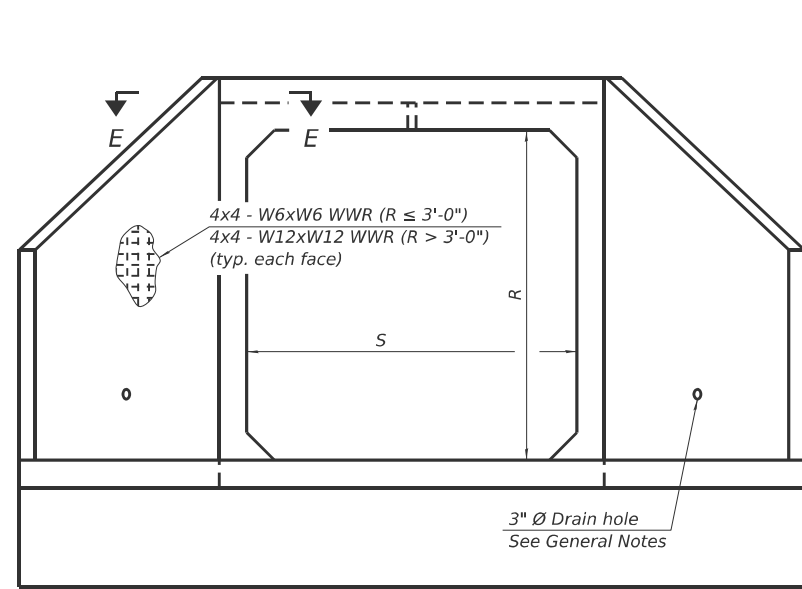
USER NAME = Ehren.Kirby	DESIGNED -	REVISED -
	DRAWN -	REVISED -
	CHECKED -	REVISED -
PLOT DATE = 10/10/2024	DATE -	REVISED -

STATE OF ILLINOIS
DEPARTMENT OF TRANSPORTATION

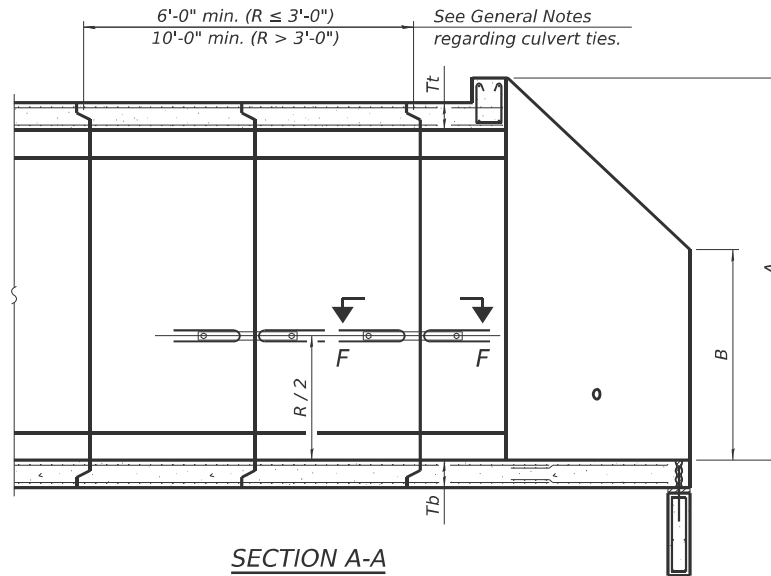
FINAL SECTION

SCALE: SHEET OF 9 SHEETS STA. TO STA.

F.A.P. RTE.	SECTION	COUNTY	TOTAL SHEETS	SHEET NO.
329	19CR-1	PERRY	28	16
CONTRACT NO. 78949				
ILLINOIS FED. AID PROJECT				



END VIEW



SECTION A-A

GENERAL NOTES

Box Culvert End Sections shall be constructed according to the requirements of Section 540 of the Standard Specifications except as modified herein. End sections will be paid for at the contract unit price per each for Box Culvert End Sections.

The Contractor may furnish the end section as a single precast concrete piece or construct the end section in the field using cast-in-place (CIP) construction. For CIP construction, the bottom slab thickness shall be increased by 2" and the clear cover to the bottom mat of reinforcement shall be increased to 3".

Box section dimensions, materials, and reinforcement details for Box Culvert End Sections shall be according to the requirements for ASTM C 1577 as required for the design of the portion of the culvert within the limits of Precast Concrete Box Culverts except as modified herein.

The number of culvert ties shall be sufficient to engage the minimum length of culvert barrel shown within the pay limits for Precast Concrete Box Culverts and will be dependent upon the length of box culvert segments furnished by the Contractor. Culvert ties are not required for box culverts having a rise (R) less than or equal to 3 ft and a span (S) greater than or equal to 10 ft.

All costs associated with furnishing and installing or constructing the toewall and culvert ties will not be measured for payment but shall be included in the unit price for Box Culvert End Sections of the culvert number specified.

Shop drawings that detail slab thickness and reinforcement layout for the Box Culvert End Sections shall be provided to the Engineer for review and approval. Reinforcement bars not detailed herein shall be detailed with a clear distance at the end of the reinforcement not less than 1/2" nor more than 2". For the precast option, it shall be the Contractor's responsibility for determining a method of handling and a construction procedure shall be included on the shop drawings. The Contractor shall determine and detail in the shop drawings any necessary strengthening or stiffening provisions necessary to handle the precast segment. Any required modifications shall be at no extra charge.

The Contractor may use reinforcement bars in lieu of welded wire reinforcement (WWR). Reinforcement bars shall be limited to the sizes of #3 through #5 bars, a maximum spacing of the lesser of 8" or the member thickness, and shall result in an area of reinforcement equal to or greater than that provided by the WWR. Minimum lap lengths detailed herein are applicable to WWR and reinforcement bars.

Reinforcement (circumferential and longitudinal) in the culvert barrel portion of the end section being lapped with reinforcement from the wingwalls or bottom slab of the end section shall not be less than that required by ASTM C 1577 for the design fill height or the reinforcement detailed for the end section, whichever is greater.

One drain hole shall be provided in each wingwall for end sections of box culverts having an opening with a clear rise greater than 3 ft. The drain hole shall be located within the lower 1/3 of the clear rise of the box culvert and shall conform to the requirements of Article 503.11 of the Standard Specifications.

APRON END SECTION DIMENSIONS

Span (S)	Rise (R)	Tt	Tb	Ts	A	B	C	D	E	Concrete Cu. Yd.	Culvert Ties Required
3'-0"	2'-0"	7"	6"	4"	3'-4"	2'-2"	2'-10 ³ / ₈ "	4'-1"	10'-4 ⁵ / ₈ "	2.8	Yes
3'-0"	2'-0"	4"	4"	4"	3'-1"	2'-1"	2'-7 ⁷ / ₈ "	3'-9"	9'-11"	2.3	Yes
3'-0"	3'-0"	7"	6"	4"	4'-4"	2'-8"	3'-10 ³ / ₈ "	5'-6"	12'-4 ³ / ₈ "	3.7	Yes
3'-0"	3'-0"	4"	4"	4"	4'-1"	2'-7"	3'-7 ⁷ / ₈ "	5'-2"	11'-11"	3.1	Yes
4'-0"	2'-0"	7.5"	6"	5"	3'-4 ¹ / ₂ "	2'-2 ¹ / ₂ "	2'-11 ³ / ₈ "	4'-2"	11'-8"	3.3	Yes
4'-0"	2'-0"	5"	5"	5"	3'-2"	2'-1"	2'-8 ¹ / ₂ "	3'-10"	11'-2 ³ / ₈ "	2.8	Yes
4'-0"	3'-0"	7.5"	6"	5"	4'-4 ¹ / ₂ "	2'-8 ¹ / ₂ "	3'-11 ³ / ₈ "	5'-7"	13'-8 ³ / ₈ "	4.2	Yes
4'-0"	3'-0"	5"	5"	5"	4'-2"	2'-7"	3'-8 ¹ / ₂ "	5'-3"	13'-2 ³ / ₈ "	3.7	Yes
4'-0"	4'-0"	7.5"	6"	5"	5'-4 ¹ / ₂ "	3'-2 ¹ / ₂ "	4'-11 ³ / ₈ "	7'-0"	15'-8 ¹ / ₈ "	5.3	Yes
4'-0"	4'-0"	5"	5"	5"	5'-2"	3'-1"	4'-8 ³ / ₈ "	6'-8"	15'-2 ¹ / ₂ "	4.7	Yes
5'-0"	2'-0"	8"	7"	6"	3'-5"	2'-3"	2'-11 ³ / ₈ "	4'-2"	12'-10"	3.9	Yes
5'-0"	2'-0"	6"	6"	6"	3'-3"	2'-2"	2'-10"	4'-0"	12'-7 ¹ / ₄ "	3.5	Yes
5'-0"	3'-0"	8"	7"	6"	4'-5"	2'-9"	3'-11 ³ / ₈ "	5'-7"	14'-10 ¹ / ₈ "	4.9	Yes
5'-0"	3'-0"	6"	6"	6"	4'-3"	2'-8"	3'-10"	5'-5"	14'-7 ¹ / ₄ "	4.5	Yes
5'-0"	4'-0"	8"	7"	6"	5'-5"	3'-3"	4'-11 ³ / ₈ "	7'-0"	16'-10 ¹ / ₈ "	6.1	Yes
5'-0"	4'-0"	6"	6"	6"	5'-3"	3'-2"	4'-9 ¹ / ₄ "	6'-9"	16'-5 ⁷ / ₈ "	5.5	Yes
5'-0"	5'-0"	8"	7"	6"	6'-5"	3'-9"	5'-11 ³ / ₈ "	8'-5"	18'-10 ¹ / ₈ "	7.4	Yes
5'-0"	5'-0"	6"	6"	6"	6'-3"	3'-8"	5'-9 ¹ / ₄ "	8'-2"	18'-5 ⁷ / ₈ "	6.8	Yes
6'-0"	2'-0"	8"	7"	7"	3'-5"	2'-3"	2'-11 ³ / ₈ "	4'-2"	14'-0"	4.3	Yes
6'-0"	2'-0"	7"	7"	7"	3'-4"	2'-2"	2'-10 ⁵ / ₈ "	4'-1"	13'-10 ⁵ / ₈ "	4.2	Yes
6'-0"	3'-0"	8"	7"	7"	4'-5"	2'-9"	3'-11 ³ / ₈ "	5'-7"	16'-0 ³ / ₈ "	5.4	Yes
6'-0"	3'-0"	7"	7"	7"	4'-4"	2'-8"	3'-10 ³ / ₈ "	5'-6"	15'-10 ³ / ₈ "	5.2	Yes
6'-0"	4'-0"	8"	7"	7"	5'-5"	3'-3"	4'-11 ³ / ₈ "	7'-0"	18'-0 ¹ / ₈ "	6.5	Yes
6'-0"	4'-0"	7"	7"	7"	5'-4"	3'-2"	4'-10 ³ / ₄ "	6'-11"	17'-10 ³ / ₄ "	6.5	Yes
6'-0"	5'-0"	8"	7"	7"	6'-5"	3'-9"	5'-11 ³ / ₈ "	8'-5"	20'-0 ¹ / ₈ "	8.0	Yes
6'-0"	5'-0"	7"	7"	7"	6'-4"	3'-8"	5'-10 ³ / ₄ "	8'-4"	19'-10 ³ / ₄ "	7.8	Yes
6'-0"	6'-0"	8"	7"	7"	7'-5"	4'-3"	6'-11 ¹ / ₂ "	9'-10"	22'-0 ¹ / ₄ "	9.5	Yes
6'-0"	6'-0"	7"	7"	7"	7'-4"	4'-2"	6'-10 ³ / ₄ "	9'-9"	21'-10 ³ / ₄ "	9.3	Yes
7'-0"	2'-0"	8"	8"	8"	3'-5"	2'-3"	2'-11 ³ / ₈ "	4'-2"	15'-2"	4.9	Yes
7'-0"	3'-0"	8"	8"	8"	4'-5"	2'-9"	3'-11 ³ / ₈ "	5'-7"	17'-2 ¹ / ₈ "	6.1	Yes
7'-0"	4'-0"	8"	8"	8"	5'-5"	3'-3"	4'-11 ³ / ₈ "	7'-0"	19'-2 ¹ / ₈ "	7.4	Yes
7'-0"	5'-0"	8"	8"	8"	6'-5"	3'-9"	5'-11 ³ / ₈ "	8'-5"	21'-2 ¹ / ₈ "	8.9	Yes
7'-0"	6'-0"	8"	8"	8"	7'-5"	4'-3"	6'-11 ¹ / ₂ "	9'-10"	23'-2 ¹ / ₄ "	10.6	Yes
8'-0"	2'-0"	8"	8"	8"	3'-5"	2'-3"	2'-11 ³ / ₈ "	4'-2"	16'-2"	5.3	Yes
8'-0"	3'-0"	8"	8"	8"	4'-5"	2'-9"	3'-11 ³ / ₈ "	5'-7"	18'-2 ¹ / ₈ "	6.5	Yes
8'-0"	4'-0"	8"	8"	8"	5'-5"	3'-3"	4'-11 ³ / ₈ "	7'-0"	20'-2 ¹ / ₈ "	7.8	Yes
8'-0"	5'-0"	8"	8"	8"	6'-5"	3'-9"	5'-11 ³ / ₈ "	8'-5"	22'-2 ¹ / ₈ "	9.3	Yes
8'-0"	6'-0"	8"	8"	8"	7'-5"	4'-3"	6'-11 ¹ / ₂ "	9'-10"	24'-2 ¹ / ₄ "	11.0	Yes
9'-0"	2'-0"	9"	9"	9"	3'-6"	2'-3"	3'-0 ³ / ₄ "	4'-4"	17'-6 ⁷ / ₈ "	6.2	Yes
9'-0"	3'-0"	9"	9"	9"	4'-6"	2'-9"	4'-0 ³ / ₄ "	5'-9"	19'-6 ⁷ / ₈ "	7.5	Yes
9'-0"	4'-0"	9"	9"	9"	5'-6"	3'-3"	5'-0 ³ / ₄ "	7'-2"	21'-6 ⁷ / ₈ "	9.0	Yes
9'-0"	5'-0"	9"	9"	9"	6'-6"	3'-9"	6'-0 ⁷ / ₈ "	8'-7"	23'-7"	10.6	Yes
9'-0"	6'-0"	9"	9"	9"	7'-6"	4'-3"	7'-0 ³ / ₈ "	9'-11"	25'-5 ⁵ / ₈ "	12.4	Yes
10'-0"	2'-0"	10"	10"	10"	3'-7"	2'-4"	3'-1 ¹ / ₂ "	4'-5"	18'-10 ¹ / ₄ "	7.1	No
10'-0"	3'-0"	10"	10"	10"	4'-7"	2'-10"	4'-1 ¹ / ₂ "	5'-10"	20'-10 ¹ / ₄ "	8.6	No
10'-0"	4'-0"	10"	10"	10"	5'-7"	3'-4"	5'-1 ¹ / ₂ "	7'-3"	22'-10 ³ / ₈ "	10.2	Yes
10'-0"	5'-0"	10"	10"	10"	6'-7"	3'-10"	6'-1 ¹ / ₂ "	8'-8"	24'-10 ³ / ₈ "	12.0	Yes
10'-0"	6'-0"	10"	10"	10"	7'-7"	4'-4"	7'-1 ¹ / ₂ "	10'-1"	26'-10 ³ / ₈ "	13.9	Yes
11'-0"	2'-0"	11"	11"	11"	3'-8"	2'-4"	3'-2 ⁷ / ₈ "	4'-7"	20'-3 ¹ / ₈ "	8.2	No
11'-0"	3'-0"	11"	11"	11"	4'-8"	2'-10"	4'-2 ⁷ / ₈ "	6'-0"	22'-3 ¹ / ₈ "	9.8	No
11'-0"	4'-0"	11"	11"	11"	5'-8"	3'-4"	5'-2 ³ / ₄ "	7'-4"	24'-1 ³ / ₄ "	11.5	Yes
11'-0"	5'-0"	11"	11"	11"	6'-8"	3'-10"	6'-2 ¹ / ₄ "	8'-9"	26'-1 ³ / ₄ "	13.3	Yes
11'-0"	6'-0"	11"	11"	11"	7'-8"	4'-4"	7'-2 ¹ / ₄ "	10'-2"	28'-1 ⁷ / ₈ "	15.5	Yes
12'-0"	2'-0"	12"	12"	12"	3'-9"	2'-5"	3'-3 ³ / ₈ "	4'-8"	21'-6 ¹ / ₂ "	9.3	No
12'-0"	3'-0"	12"	12"	12"	4'-9"	2'-11"	4'-3 ³ / ₈ "	6'-1"	23'-6 ¹ / ₂ "	11.1	No
12'-0"	4'-0"	12"	12"	12"	5'-9"	3'-5"	5'-3 ³ / ₈ "	7'-6"	25'-6 ³ / ₈ "	13.0	Yes
12'-0"	5'-0"	12"	12"	12"	6'-9"	3'-11"	6'-3 ³ / ₈ "	8'-11"	27'-6 ³ / ₈ "	14.1	Yes
12'-0"	6'-0"	12"	12"	12"	7'-9"	4'-5"	7'-3 ³ / ₈ "	10'-4"	29'-6 ³ / ₈ "	17.4	Yes

Note:

Two sets of apron end section dimensions are shown above for some box culvert sizes due to the top and bottom slabs having different thicknesses per ASTM C 1577 for design fill heights less than 2 ft. (Sheet 1 of 2)

PRECAST CONCRETE BOX CULVERT APRON END SECTION DETAILS - STRUCTURE NO. 073-7091

SCB-AES

5-15-2023

MODEL - Precast End Sections-2 (Sheet)
FILE NAME - c:\p\work\wv\wv\refersons\0818474109\78949-StrHS-District\StrHS.dgn

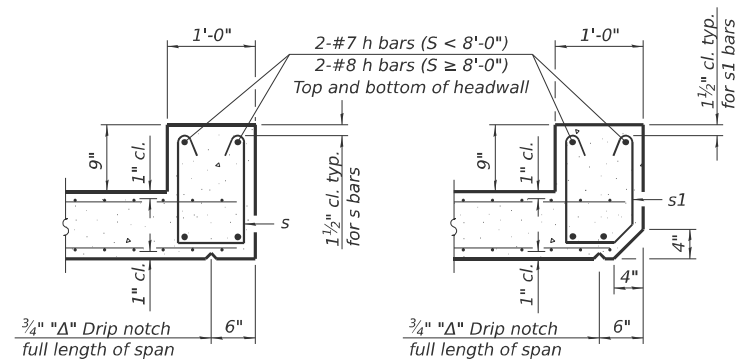
USER NAME = thomas.jefferson	DESIGNED -	REVISED -
	DRAWN -	REVISED -
	CHECKED -	REVISED -
PLOT DATE = 7/9/2024	DATE -	REVISED -

STATE OF ILLINOIS
DEPARTMENT OF TRANSPORTATION

PRECAST APRON END
SECTION DETAILS

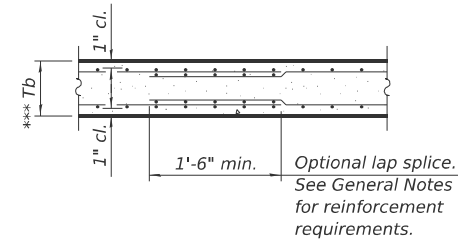
SCALE: SHEET OF 9 SHEETS STA. TO STA.

F.A.P. RTE. 329	SECTION 19CR-1	COUNTY PERRY	TOTAL SHEETS 28	SHEET NO. 17
CONTRACT NO. 78949				
ILLINOIS FED. AID PROJECT				

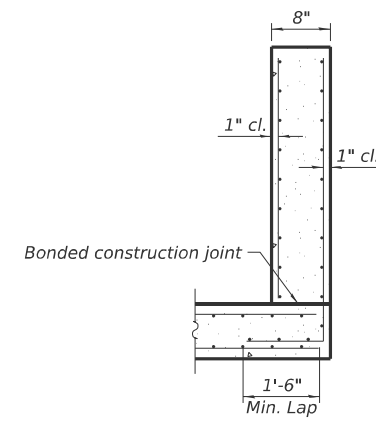


SECTION B-B
(Top slab at downstream end)

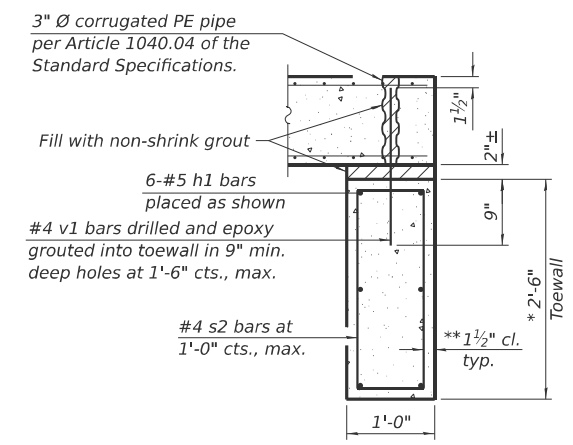
SECTION B-B
(Top slab at upstream end)



SECTION B-B
(Bottom Slab)

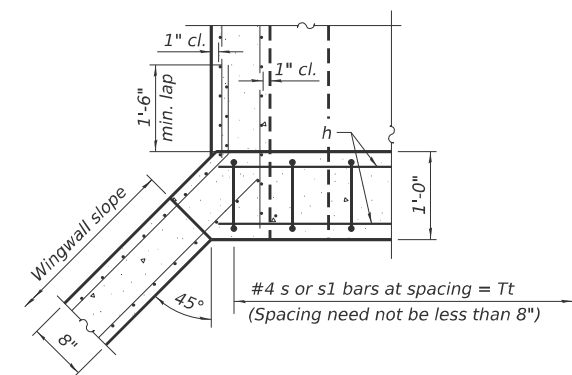


SECTION C-C

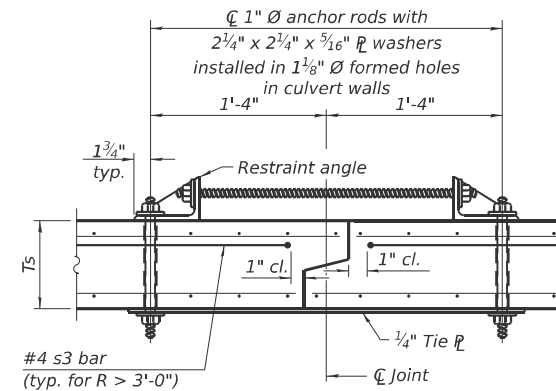


SECTION D-D

*** This dimension shall be increased by 2" for CIP construction.



SECTION E-E



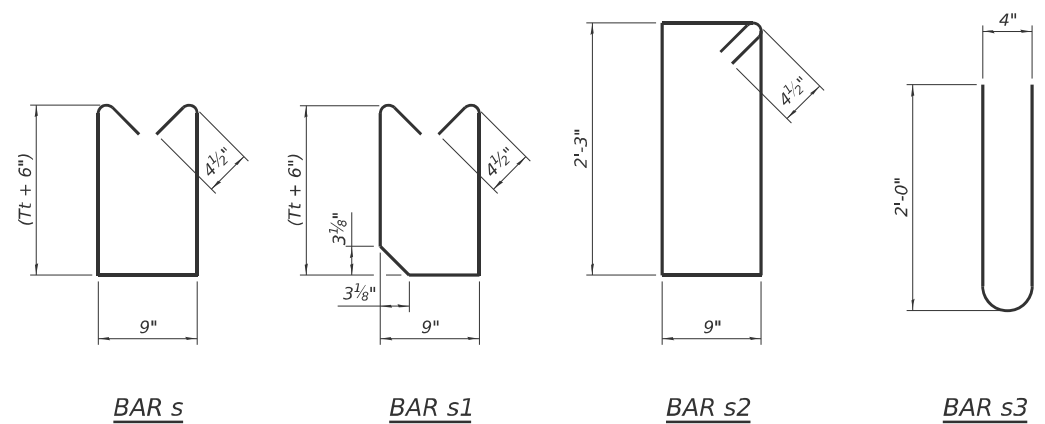
SECTION F-F
(Showing culvert tie details)

TOEWALL CONSTRUCTION SEQUENCE

1. Perform excavation and construct toewall.
2. Backfill accordingly and place bedding for precast box culvert end sections.
3. Set precast box culvert end section.
4. Drill and epoxy grout reinforcement in toewall in accordance with Section 584 of the Standard Specifications.
5. Pressure grout voids using non-shrink grout conforming to Section 1024 of the Standard Specifications.

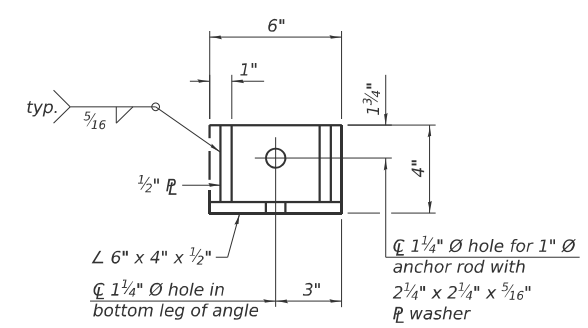
* The Contractor may furnish a precast or cast-in-place toewall. The Contractor shall be responsible for the strength and stability of the precast toewall during handling. Additional lifting points may be required depending upon the length of the toewall or the Contractor may need to modify the design of the toewall for the proposed handling method.

** If soil conditions permit, the sides of the toewall may be poured directly against the soil. The clear cover on the sides of the toewall shall be increased to 3" by increasing the thickness of the toewall.

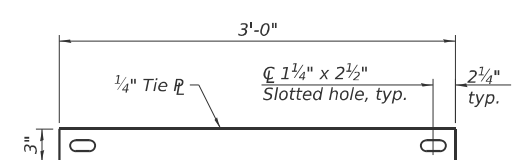


SCB-AES

5-15-2023



RESTRAINT ANGLE DETAIL



TIE PLATE DETAIL

Notes:

1" Ø anchor rods for the culvert ties shall conform to the requirements of ASTM F1554, Grade 105. Structural steel for the tie plate and restraint angle shall conform to the requirements of Article 1006.04 of the Standard Specifications. All components of the culvert tie detail shall be galvanized according to the requirements of AASHTO M 111 or M 232 as applicable. 2 1/4" x 2 1/4" x 3/16" plate washers shall be provided under each nut required for the anchor rods. Anchor rods connecting precast sections shall be brought to a snug tight condition followed by an additional 1/2 turn on one of the nuts for anchor rods installed in the walls. Match marks shall be provided on the bolt and nut to verify relative rotation between the bolt and the nut. Holes in the walls for the culvert tie assembly may be drilled using core bits in lieu of using formed holes.

(Sheet 2 of 2)

PRECAST APRON END SECTION DETAILS - STRUCTURE NO. 073-7091

MODEL: Precast End Sections-1 (Sheet)
FILE NAME: c:\p\work\wv\wv\jeffersons\0818474109\78949-SubS-DistrictStds.dgn

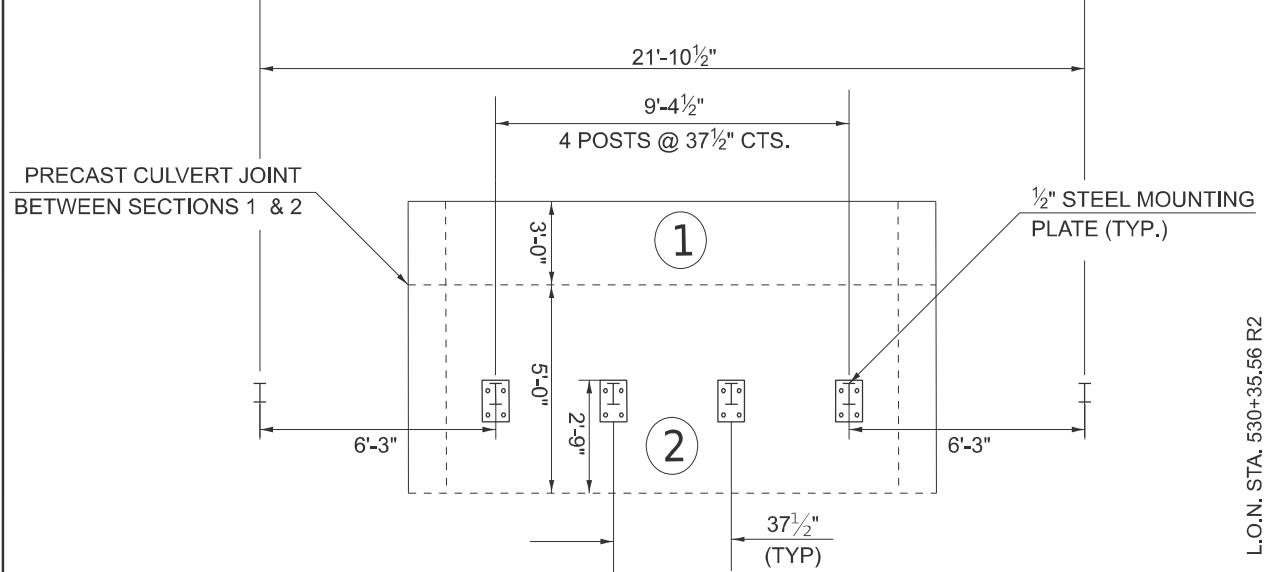
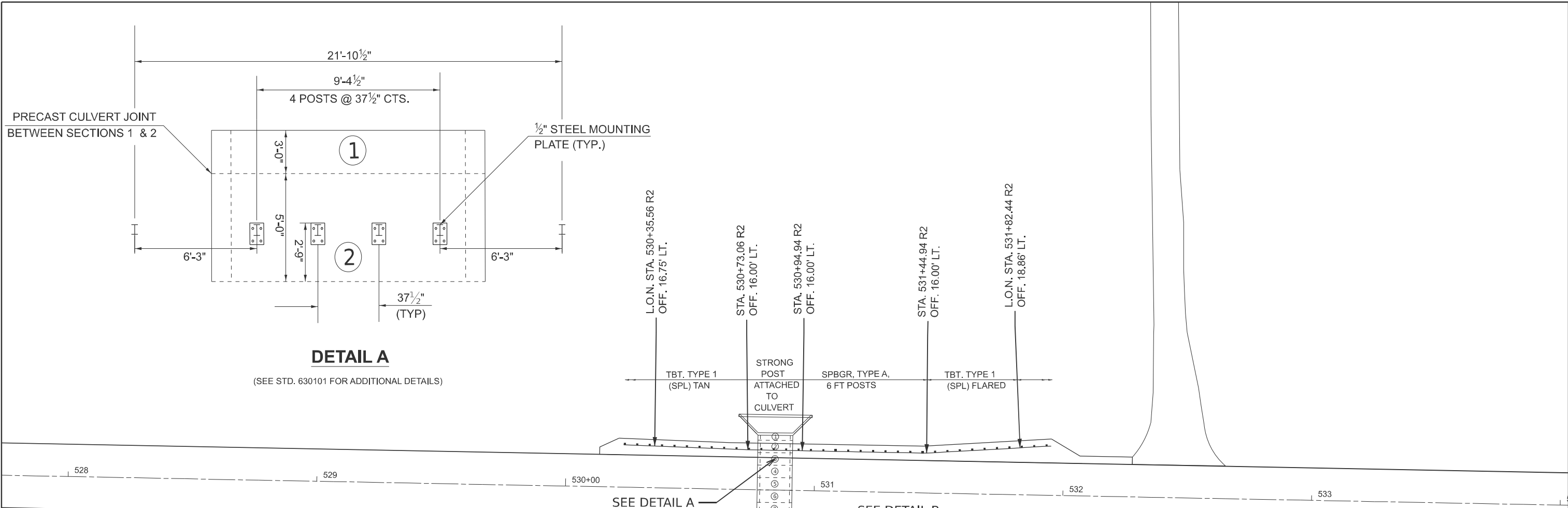
USER NAME = thomas.jefferson	DESIGNED -	REVISED -
	DRAWN -	REVISED -
	CHECKED -	REVISED -
PLOT DATE = 7/9/2024	DATE -	REVISED -

**STATE OF ILLINOIS
DEPARTMENT OF TRANSPORTATION**

**PRECAST APRON END
SECTION DETAILS**

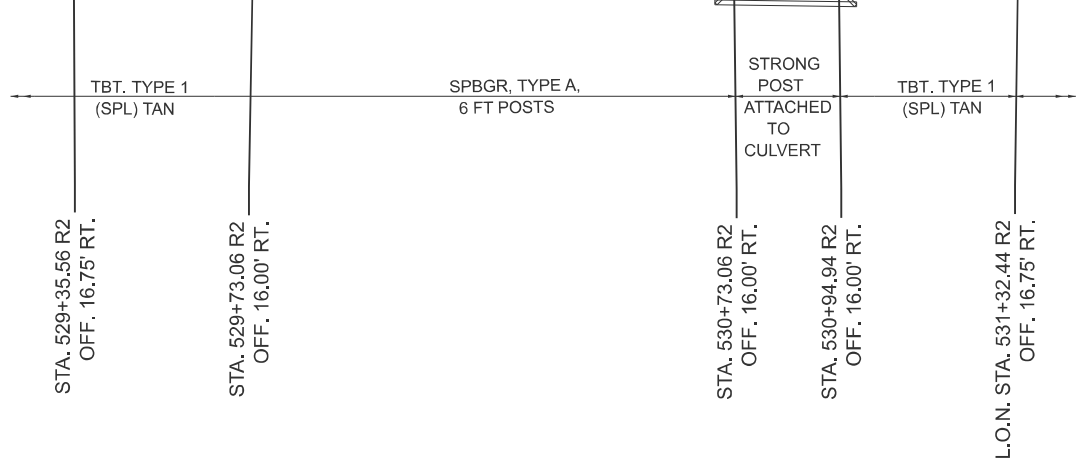
SCALE: SHEET OF 9 SHEETS STA. TO STA.

F.A.P. RTE.	SECTION	COUNTY	TOTAL SHEETS	SHEET NO.
329	19CR-1	PERRY	28	18
CONTRACT NO. 78949				
ILLINOIS FED. AID PROJECT				

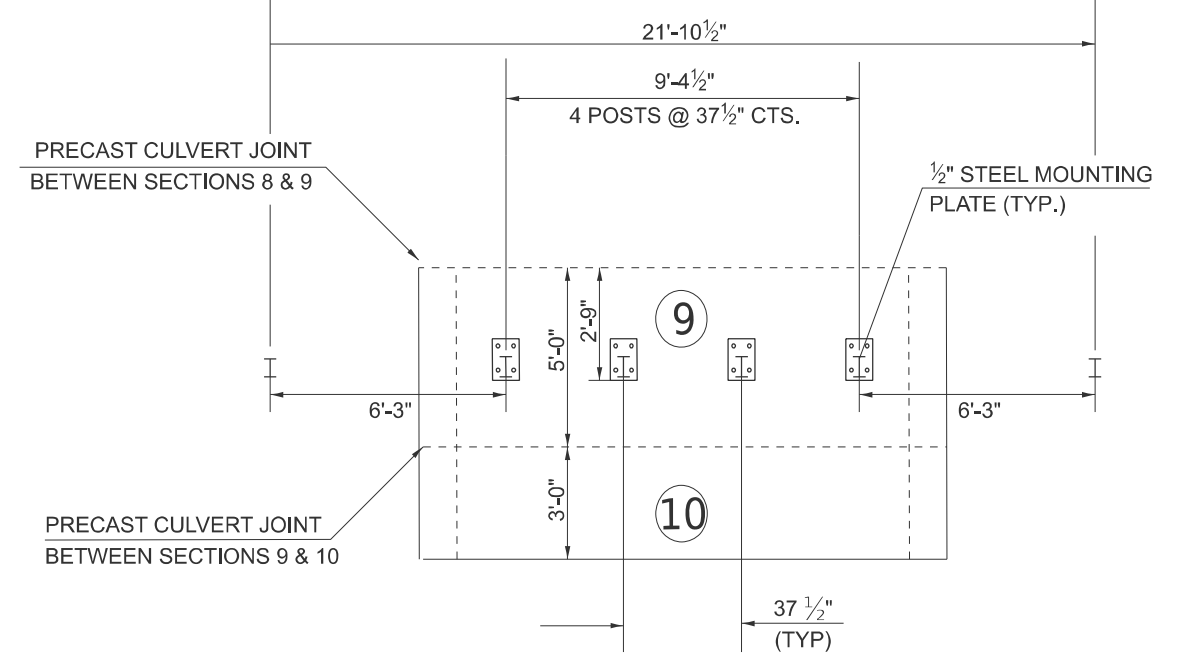


DETAIL A
(SEE STD. 630101 FOR ADDITIONAL DETAILS)

SEE DETAIL A SEE DETAIL B



DETAIL B
(SEE STD. 630101 FOR ADDITIONAL DETAILS)



MODEL: Guardrail Design (Sheet)
FILE NAME: c:\p\work\pav\td\jeffersons\08184741D978948-Seecd.dgn

USER NAME = thomas.jefferson	DESIGNED -	REVISED -
	DRAWN -	REVISED -
	CHECKED -	REVISED -
PLOT DATE = 8/1/2024	DATE -	REVISED -

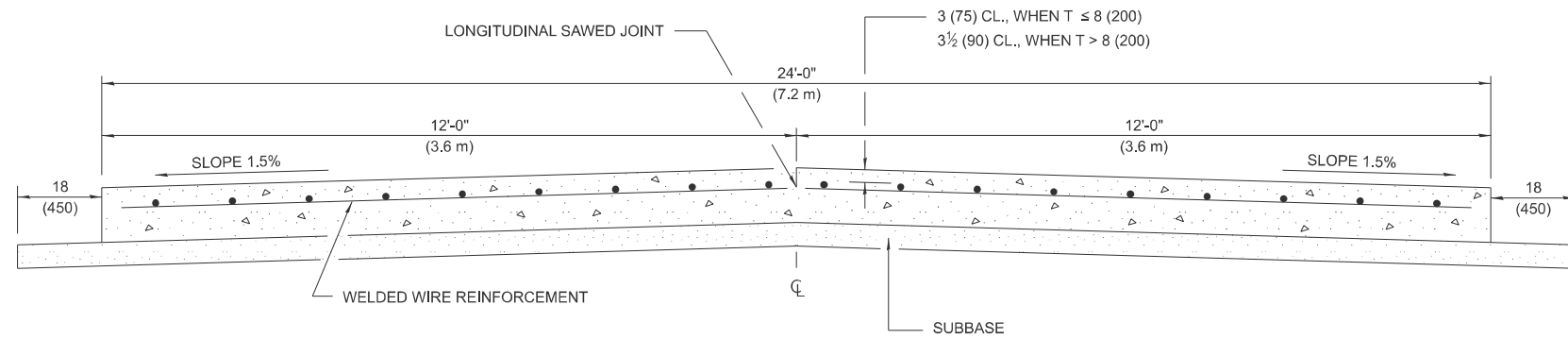
**STATE OF ILLINOIS
DEPARTMENT OF TRANSPORTATION**

GUARDRAIL DESIGN

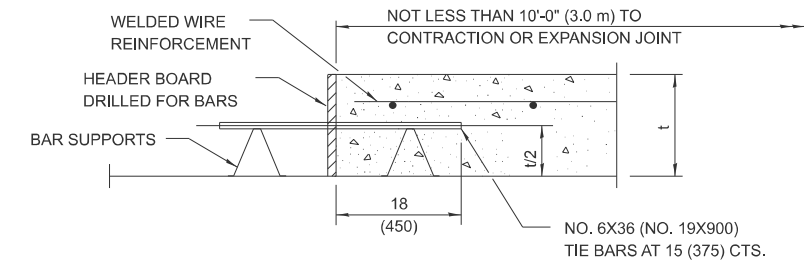
SCALE: SHEET OF 9 SHEETS STA. TO STA.

F.A.P. RTE.	SECTION	COUNTY	TOTAL SHEETS	SHEET NO.
329	19CR-1	PERRY	28	19
CONTRACT NO. 78949				
ILLINOIS FED. AID PROJECT				

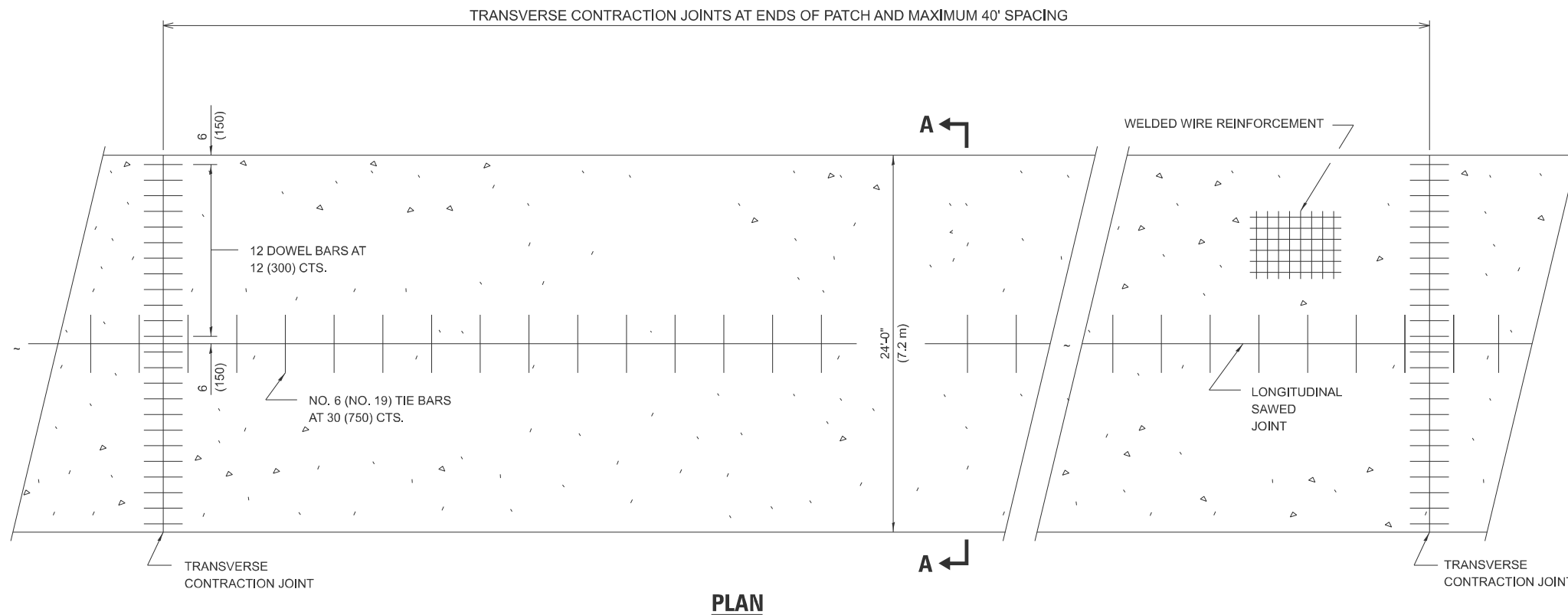
24' (7.2 m) PCC PAVEMENT OVER BOX CULVERT



SECTION A-A
(TYPICAL 2-LANE WITH SHOULDERS)



TRANSVERSE CONSTRUCTION JOINT
(IF NEEDED PER STANDARD SPECIFICATIONS)



PLAN

GENERAL NOTES

- SEE STANDARD 420001 FOR DETAILS NOT SHOWN.
- SEE STANDARD 420701 FOR WELDED WIRE REINFORCEMENT DETAILS.
- ALL DIMENSIONS ARE IN INCHES (MILLIMETERS) UNLESS OTHERWISE SHOWN.
- ACTUAL DIMENSIONS TO MATCH FIELD CONDITIONS AND CONSTRUCTION METHODS.

MODEL: District Standards-4 (Sheet)
FILE NAME: c:\p\work\wv\wv\jeffersons\0818474109\78949-ShHS-DistrictStds.dgn

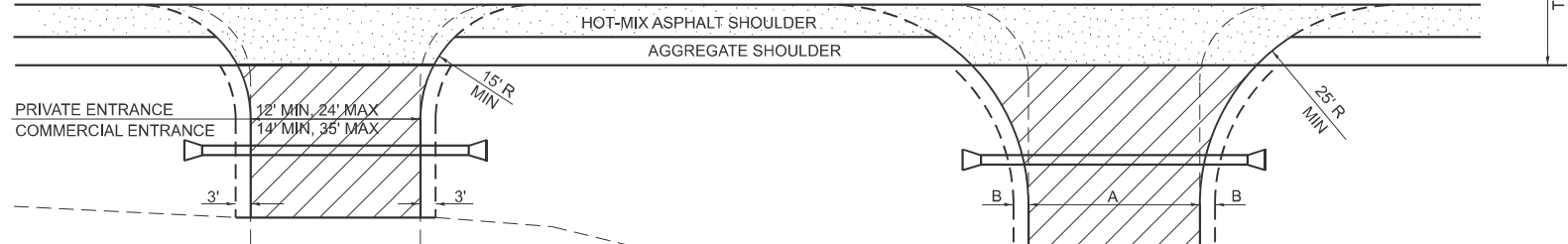
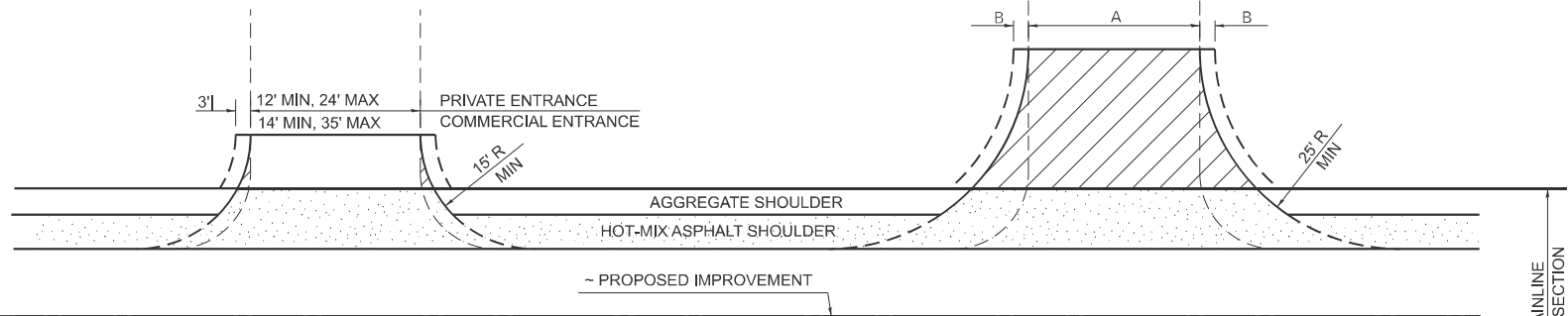
DRAWN	11-09-17
REVISED	07-23-18
REVISED	10-21-21
REVISED	05-04-22

STD. 9-13

USER NAME = thomas.jefferson	DESIGNED -	REVISED -	STATE OF ILLINOIS DEPARTMENT OF TRANSPORTATION	DISTRICT STANDARDS	F.A.P. RTE.	SECTION	COUNTY	TOTAL SHEETS	SHEET NO.
	DRAWN -	REVISED -			329	19CR-1	PERRY	28	20
PLOT DATE = 7/9/2024	CHECKED -	REVISED -			CONTRACT NO. 78949				
	DATE -	REVISED -	SCALE:		SHEET OF 9 SHEETS		STA. TO STA.		ILLINOIS FED. AID PROJECT

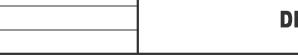
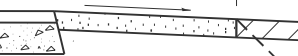
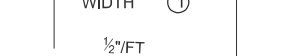
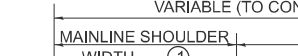
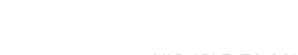
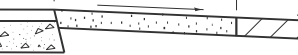
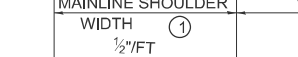
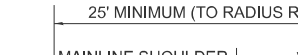
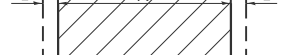
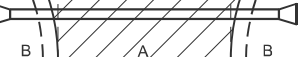
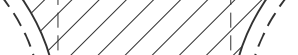
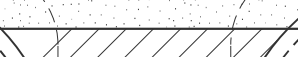
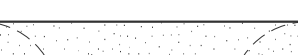
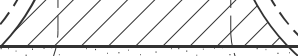
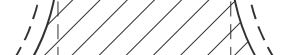
RURAL SIDE APPROACH DETAILS

PRIVATE AND COMMERCIAL ENTRANCES



PRIVATE AND COMMERCIAL ENTRANCES (PROPOSED CULVERT)

SIDEROADS



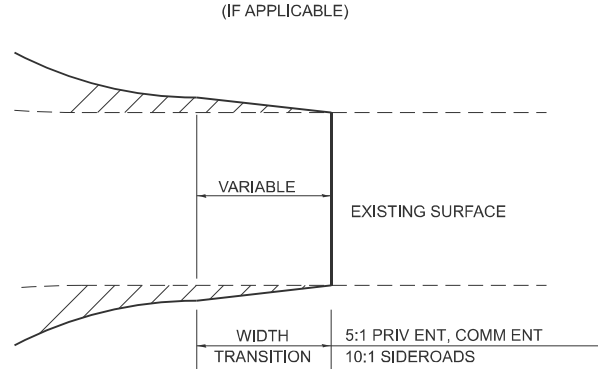
SIDEROAD DIMENSIONS (MIN.)

ADT	A (FT)	B (FT)
0 TO 250	18'	2'
250 TO 400	20'	2'
GREATER THAN 400	22'	4'

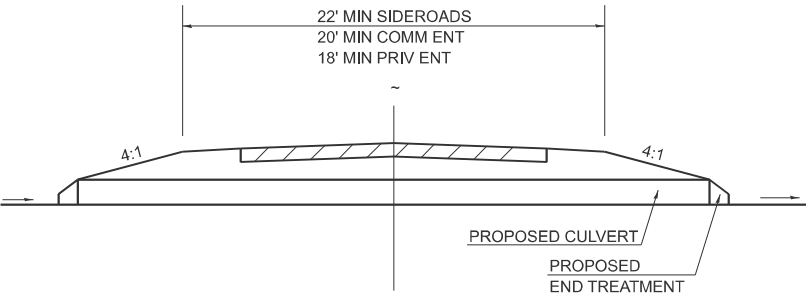
FIELD ENTRANCE TREATMENT

CONSTRUCT MAINLINE HOT-MIX ASPHALT AND AGGREGATE SHOULDERS THROUGH FIELD ENTRANCES. IF A PIPE IS REQUIRED, PROVIDE A 22' WIDE EARTH EMBANKMENT WITH 15' RADII AT THE INTERSECTION.

WIDTH TRANSITION DETAIL TO EXISTING



DETAIL FOR CALCULATING CULVERT LENGTH



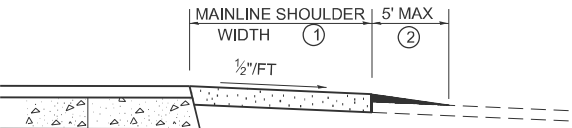
LEGEND

- CONSTRUCT HOT-MIX ASPHALT SHOULDER "FULL SHOULDER WIDTH" THROUGH ENTRANCE/INTERSECTION UNLESS OTHERWISE SHOWN ON THE PLANS OR AS DIRECTED BY THE ENGINEER.
- IF REQUIRED, AGGREGATE TAPER FOR EXISTING GRAVEL SURFACE; HOT-MIX ASPHALT TAPER FOR EXISTING HIGHER TYPE SURFACES.
- 6" AGGREGATE SURFACE COURSE FOR EXISTING GRAVEL SURFACE; 2" HOT-MIX ASPHALT RESURFACING ON 4" AGGREGATE BASE COURSE FOR EXISTING HOT-MIX ASPHALT SURFACE; PCC DRIVEWAY PAVEMENT (6" - PE; 7" - CE) FOR EXISTING CONCRETE SURFACE.
- 3" MINIMUM HOT-MIX ASPHALT RESURFACING ON 8" MINIMUM AGGREGATE BASE COURSE FOR EXISTING GRAVEL SURFACE OR OIL & CHIP SURFACE; MATCH EXISTING FOR EXISTING HIGHER TYPE SURFACES.

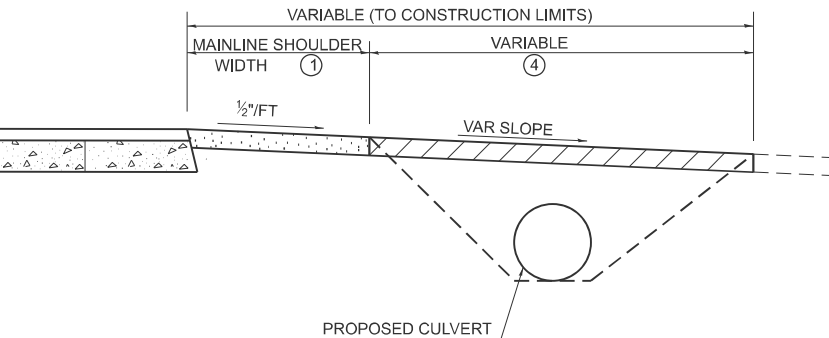
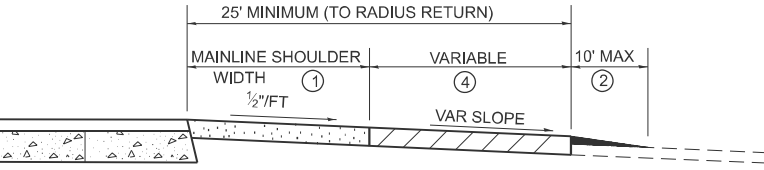
GENERAL NOTES

- ENTRANCE LOCATIONS ARE TO COMPLY WITH IDOT'S POLICY "ACCESS TO STATE HIGHWAYS".
- IN GENERAL, RELOCATED PRIVATE ENTRANCES ARE TO HAVE A 16' WIDE SURFACE WITH 3' WIDE SHOULDERS (22' WIDE EMBANKMENT).
- SEE PLANS FOR PROPOSED PROFILE GRADES AT ENTRANCES/SIDEROADS. THE DESIRABLE MAXIMUM PROFILE GRADE FOR ENTRANCES ARE 12% FOR PE; 10% FOR CE.
- ENTRANCE PIPE CULVERTS ARE TO BE A MINIMUM 15" DIAMETER AND NORMALLY REPLACED IN KIND; SIDEROAD PIPE CULVERTS ARE GENERALLY TO BE CONCRETE (18" MINIMUM DIAMETER).
- THE INTERSECTION RADII OF SIDEROADS SHALL BE AS SHOWN ON THE PLANS.

PRIVATE AND COMMERCIAL ENTRANCES



SIDEROADS



PROPOSED CULVERT

MODEL: District Standards-5 (Sheet)
FILE NAME: c:\p\work\pwr\std\jeffersons\std081847410978949-Sht5-DistrictStds.dgn

USER NAME = thomas.jefferson	DESIGNED -	REVISED -
	DRAWN -	REVISED -
	CHECKED -	REVISED -
PLOT DATE = 7/9/2024	DATE -	REVISED -

STATE OF ILLINOIS
DEPARTMENT OF TRANSPORTATION

DISTRICT STANDARDS

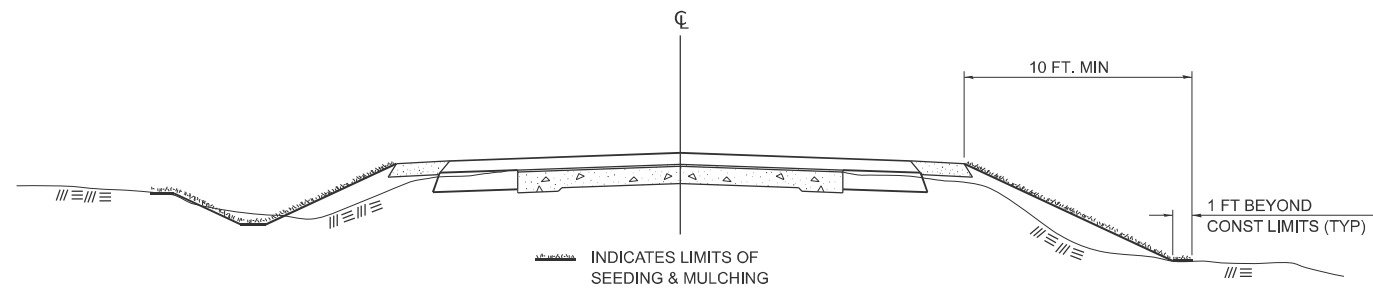
SCALE: SHEET OF 9 SHEETS STA. TO STA.

F.A.P. RTE. 329	SECTION 19CR-1	COUNTY PERRY	TOTAL SHEETS 28	SHEET NO. 21
CONTRACT NO. 78949				
ILLINOIS FED. AID PROJECT				

DRAWN	03-05-91
REVISED	01-20-00
REVISED	10-21-21
REVISED	05-27-22

STD. 9-

SEEDING & MULCHING



GENERAL NOTES

IN GENERAL, ALL EARTH SURFACES DISTURBED DURING CONSTRUCTION OPERATIONS SHALL BE SEEDED AND MULCHED UPON COMPLETION OF ALL GRADING OPERATIONS.

ON DETOUR ROADS, SLOPES SHALL BE SEEDED IMMEDIATELY UPON COMPLETION OF ANY GIVEN STAGE GRADING. TEMPORARY SEEDING SHALL BE CLASS 7.

FERTILIZER NUTRIENTS SHALL BE APPLIED TO ALL SEEDED AREAS. LIMESTONE SHALL BE APPLIED TO ALL AREAS OF FINAL SEEDING.

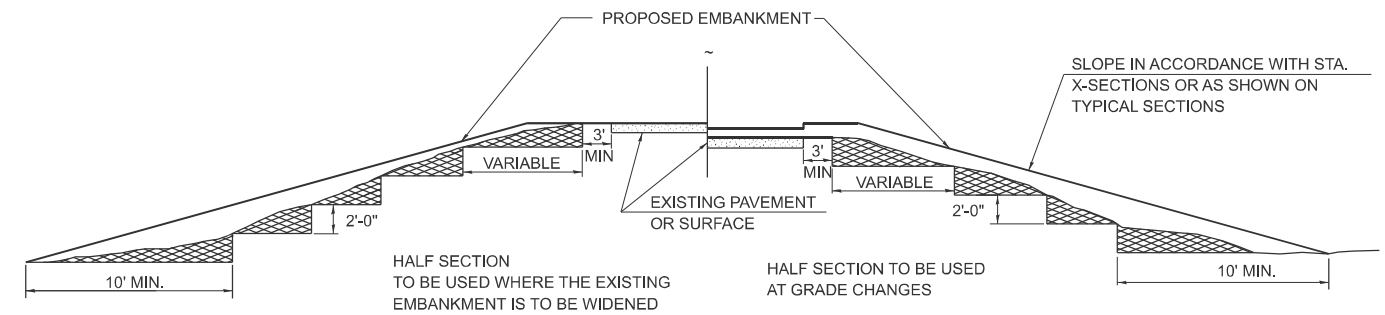
THE RATES OF APPLICATION OF FERTILIZER, MULCH AND LIMESTONE SHALL BE AS SPECIFIED IN THE SPECIAL PROVISIONS FOR ROAD AND BRIDGE CONSTRUCTION.

SECTIONS 250 AND 251 SHALL GOVERN THIS WORK EXCEPT AS SPECIFIED HEREIN OR AS NOTED IN THE SPECIAL PROVISIONS.

DRAWN	02-15-89
REVISED	03-27-08
REVISED	10-21-21
REVISED	05-27-22

STD. 9-19

TYPICAL CROSS SECTION SHOWING STEP CONSTRUCTION ON EXISTING FILL



STEPS SHALL BE CUT IN THE EXISTING SLOPE IN ACCORDANCE WITH ART. 205.03 EXCEPT THAT THE REQUIREMENT THAT STEPS SHALL BE CUT INTO THE EXISTING SLOPE BEFORE THE CONSTRUCTION OF THE EXISTING EMBANKMENT IS STARTED SHALL NOT APPLY. MATERIAL TO BE REMOVED AND REPLACED IN THE EMBANKMENT IN ACCORDANCE WITH ART. 205.04. COST TO BE INCLUDED IN THE VARIOUS ITEMS OF EXCAVATION AND NO ADDITIONAL COMPENSATION WILL BE ALLOWED BECAUSE OF THIS WORK.

DRAWN	02-15-89
REVISED	05-07-08
REVISED	10-21-21
REVISED	05-27-22

STD. 9-25

MODEL: District Standards-3 (Sheet)
FILE NAME: c:\p\work\p\w\td\jeffersons\08184741D978949-Shis-DistrictStds.dgn

USER NAME = thomas.jefferson	DESIGNED -	REVISED -
	DRAWN -	REVISED -
	CHECKED -	REVISED -
PLOT DATE = 7/9/2024	DATE -	REVISED -

STATE OF ILLINOIS
DEPARTMENT OF TRANSPORTATION

DISTRICT STANDARDS

SCALE: SHEET OF 9 SHEETS STA. TO STA.

F.A.P. RTE.	SECTION	COUNTY	TOTAL SHEETS	SHEET NO.
329	19CR-1	PERRY	28	22
CONTRACT NO. 78949				
ILLINOIS FED. AID PROJECT				

SIGN DETAILS

- ①
3 REQUIRED

DETOUR
IL 154
←

 M4-8(O)-2412
 M1-1100-3024
 M6-1 L-2115
- ②
9 REQUIRED

DETOUR
IL 154
↑

 M4-8(O)-2412
 M1-1100-3024
 M6-3 2115
- ③
3 REQUIRED

DETOUR
IL 154
↗

 M4-8(O)-2412
 M1-1100-3024
 M5-1 R-2115
- ④
3 REQUIRED

DETOUR
IL 154
↖

 M4-8(O)-2412
 M1-1100-3024
 M5-1 L-2115
- ⑤
3 REQUIRED

DETOUR
IL 154
→

 M4-8(O)-2412
 M1-1100-3024
 M6-1 R02115
- ⑥
3 REQUIRED

DETOUR AHEAD

 W20-2(O)-4848

NOTES:

1. THE CONTRACTOR HAS THE OPTION OF USING METAL POSTS INSTEAD OF WOOD.
2. ALL SIGNS SHALL BE BLACK ON ORANGE. THE POSTS SHALL BE PLACED 12 FEET FROM THE EDGE OF PAVEMENT AS DIRECTED BY THE ENGINEER.
3. ALL SIGNS AND HARDWARE REQUIRED TO INSTALL THE DETOUR ROUTE SIGNING SHALL BE INCLUDED IN THE COST OF DETOUR SIGNING.
4. SIGNS SHALL BE REMOVED ON COMPLETION OF THE CONTRACT AT THE DIRECTION OF THE ENGINEER. THIS WORK SHALL BE COMPLETED ACCORDING TO SECTION 724. THIS WORK WILL NOT BE PAID FOR. THE SIGNS AND POSTS SHALL BECOME THE PROPERTY OF THE CONTRACTOR.
5. THE RELOCATING, MAINTENANCE OR REPLACEMENT OF SIGNS SHALL BE INCLUDED IN THE COST OF DETOUR SIGNING.
6. EXACT SIGN PLACEMENT WILL BE DETERMINED BY THE ENGINEER.
7. ALL EXISTING SIGNING THAT IS NOT APPLICABLE WHILE THE ROAD CLOSURE IS IN EFFECT SHALL BE COMPLETELY COVERED BY THE CONTRACTOR.
8. THE DISTRICT 9 OPERATIONS ENGINEER SHALL BE CONTACTED 10 DAYS PRIOR TO THE ERECTION OF SIGNS.

MESSAGE BOARDS

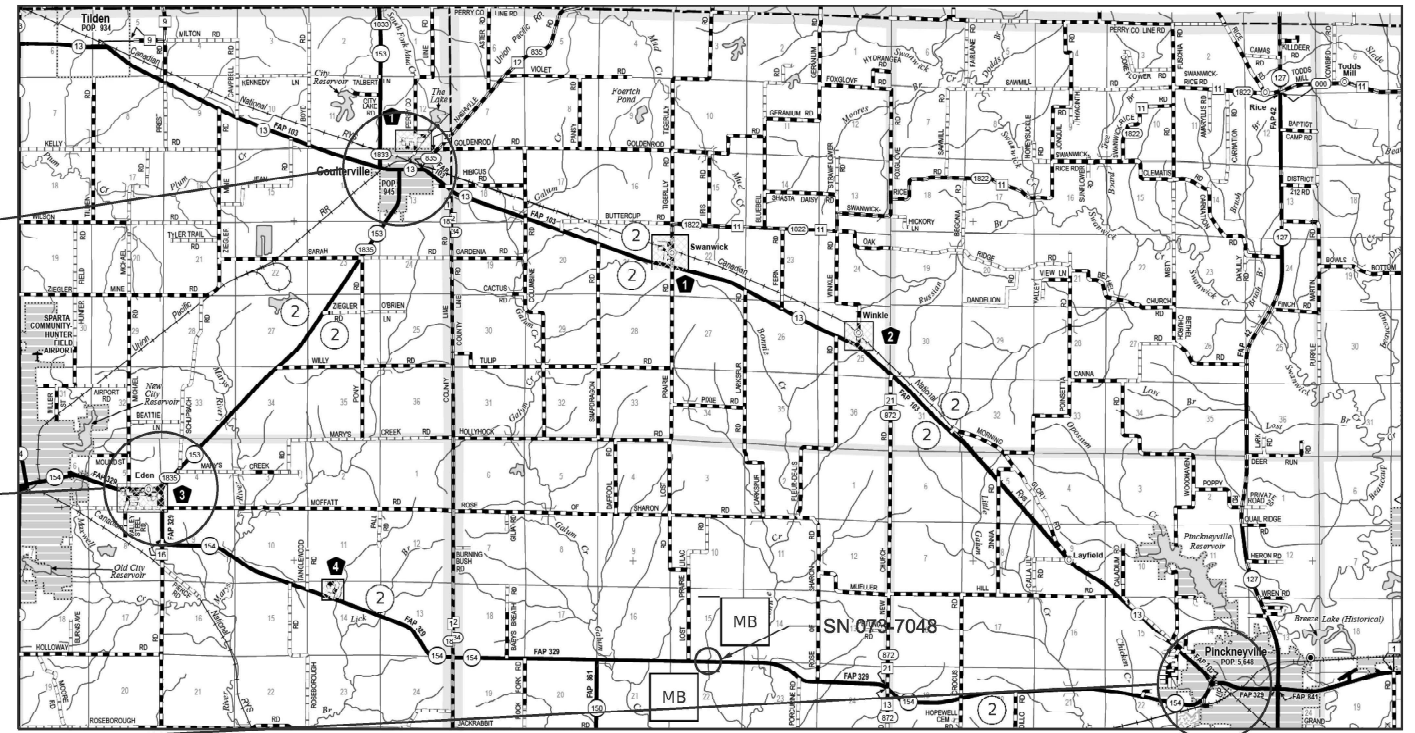
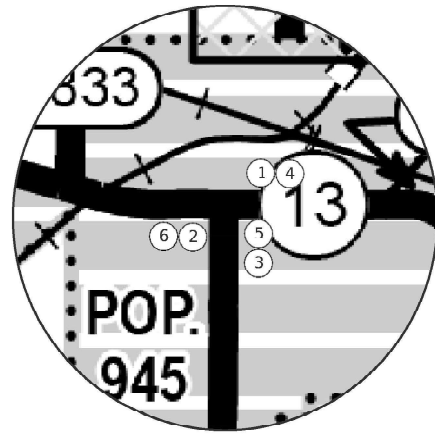
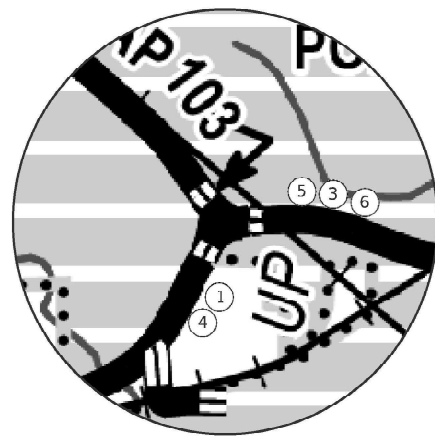
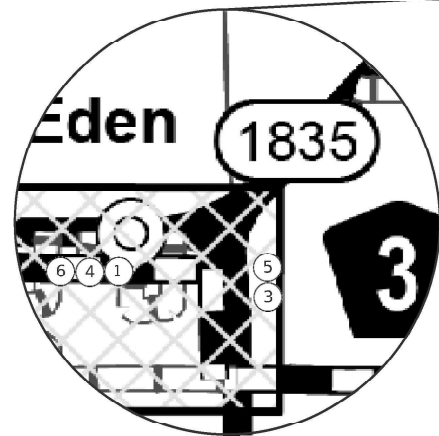
- MB 2 REQUIRED (3 WEEKS BEFORE CLOSURE)

PRIOR TO CLOSURE

IL 154 WILL BE CLOSED
XX MILES AHEAD
DATE TO DATE

DURING CLOSURE

IL 154 CLOSED
XX MILES AHEAD
LOCAL TRAFFIC ONLY



MODEL: IL-154(Rev. 8/16/14)
 FILE NAME: p:\projects\p19\1901\1901.dwg
 PROJECT: 1901 - Coatsville, TN - Detour Signage
 DATE: 8/8/2024

USER NAME = thomas.jefferson	DESIGNED -	REVISED -
	DRAWN -	REVISED -
PLOT SCALE = \$\$SCALE\$	CHECKED -	REVISED -
PLOT DATE = 8/8/2024	DATE -	REVISED -

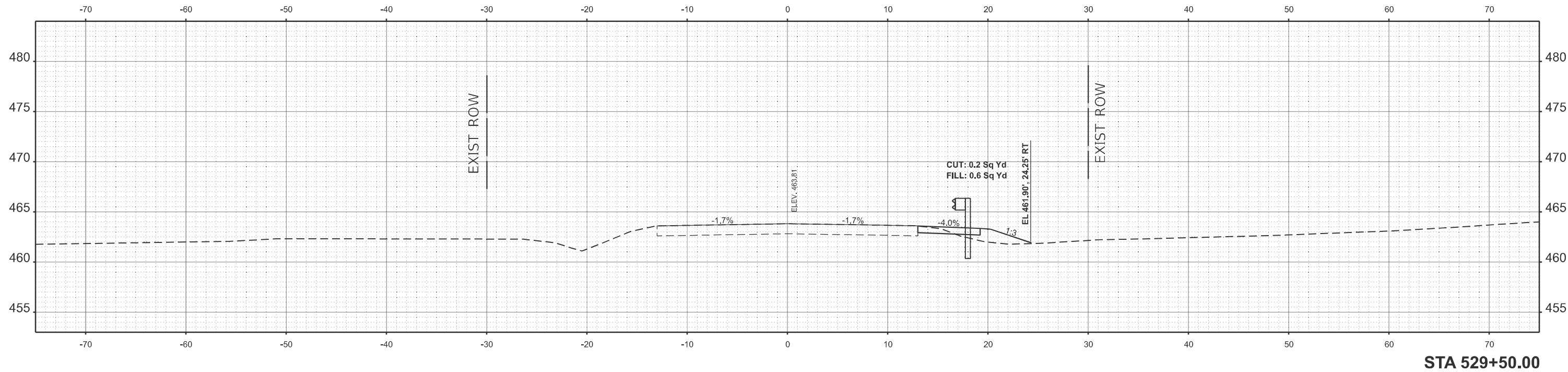
**STATE OF ILLINOIS
DEPARTMENT OF TRANSPORTATION**

DETOUR SIGN PLAN

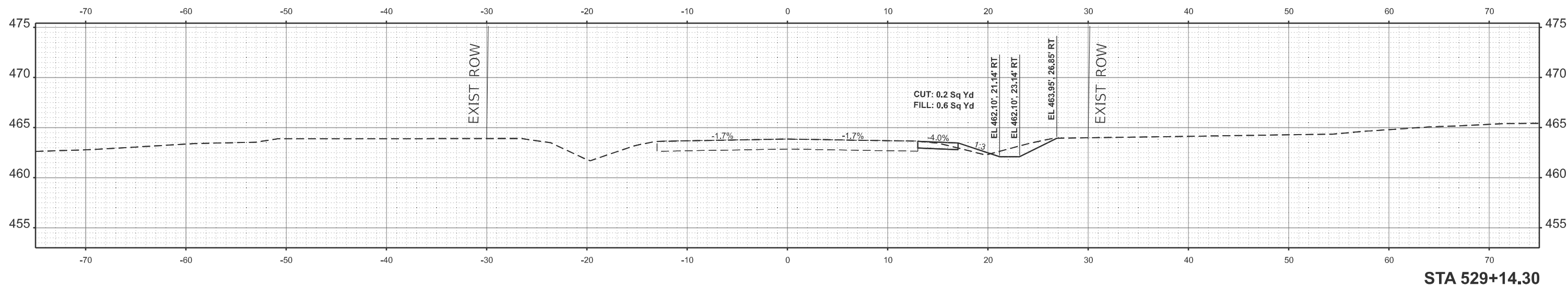
SCALE: SHEET 23 OF SHEETS STA. TO STA.

F.A.P. RTE.	SECTION	COUNTY	TOTAL SHEETS	SHEET NO.
329	19CR-1	PERRY	28	23
CONTRACT NO. 78949				
ILLINOIS FED. AID PROJECT				

FINAL SURVEY	SURVEYED	BY	DATE
NOTE BOOK	PLOTTED		
NO.	TEMPLATE		
	AREAS CHECKED		



ORIGINAL SURVEY	SURVEYED	BY	DATE
NOTE BOOK	PLOTTED		
NO.	TEMPLATE		
	AREAS CHECKED		



MODEL: IL154 - 529+00.44 R2 (Sheet)
FILE NAME: G:\p\work\td\td\jefferson\0818474\0978949-SHA-X-Section.dgn

USER NAME = thomas.jefferson	DESIGNED -	REVISED -
	DRAWN -	REVISED -
PLOT SCALE = \$SCALE\$	CHECKED -	REVISED -
PLOT DATE = 8/6/2024	DATE -	REVISED -

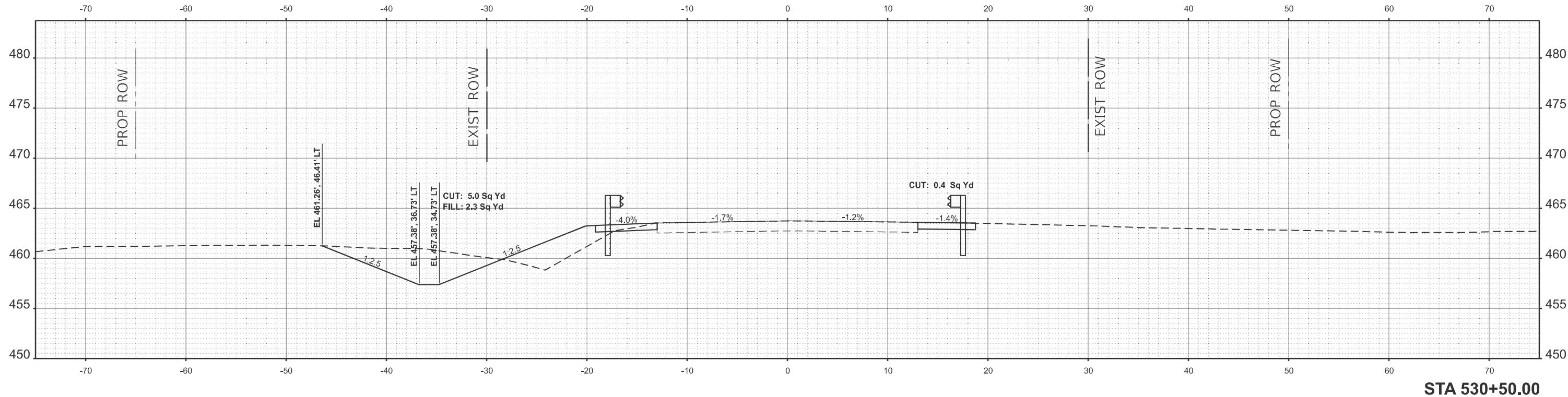
STATE OF ILLINOIS
DEPARTMENT OF TRANSPORTATION

CROSS SECTIONS

SCALE: SHEET OF 5 SHEETS STA. 529+14.30 R2 TO STA. 529+50.00 R2

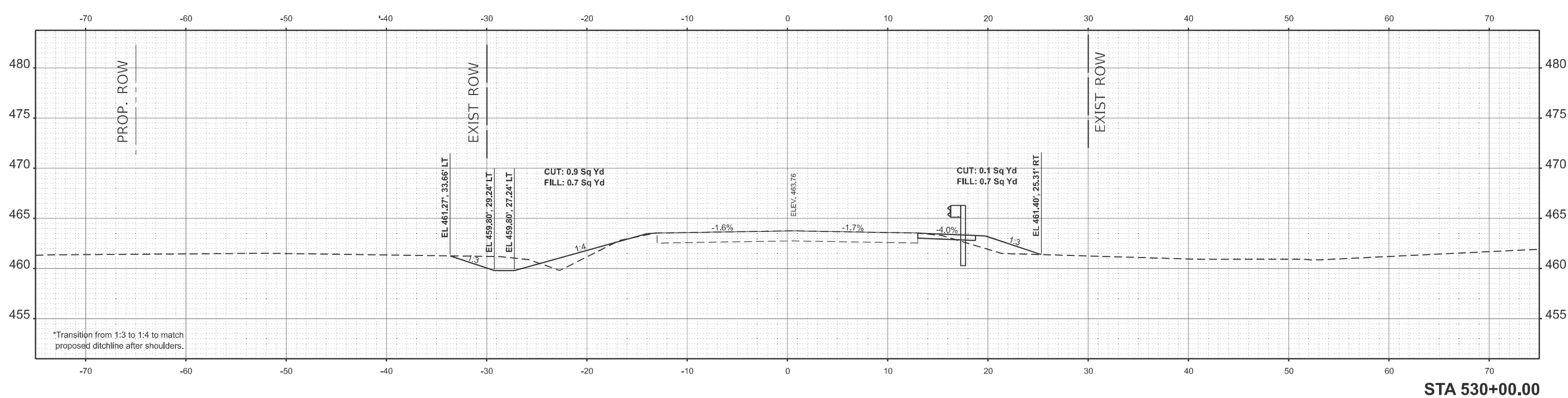
F.A.P. RTE.	SECTION	COUNTY	TOTAL SHEETS	SHEET NO.
329	19CR-1	PERRY	28	24
CONTRACT NO. 78949				
ILLINOIS FED. AID PROJECT				

DATE	
BY	
SURVEYED	
PLOTTED	
TEMPLATE	
AREAS	
CHECKED	
NO.	
FINL	
SURVEY	
NOTE BOOK	
AREAS	
CHECKED	
NO.	



STA 530+50.00

DATE	
BY	
SURVEYED	
PLOTTED	
TEMPLATE	
AREAS	
CHECKED	
NO.	
ORIGINAL	
SURVEY	
NOTE BOOK	
AREAS	
CHECKED	
NO.	



STA 530+00.00

MODEL: IL154 - 530+00.00 R2 (Sheet)
FILE NAME: G:\p\work\paw\jefferson\0818474\0978945-STA-X-Section.dgn

USER NAME =	thomas.jefferson	DESIGNED -	REVISD -
		DRAWN -	REVISD -
PLOT SCALE =	SSCALE\$	CHECKED -	REVISD -
PLOT DATE =	8/8/2024	DATE -	REVISD -

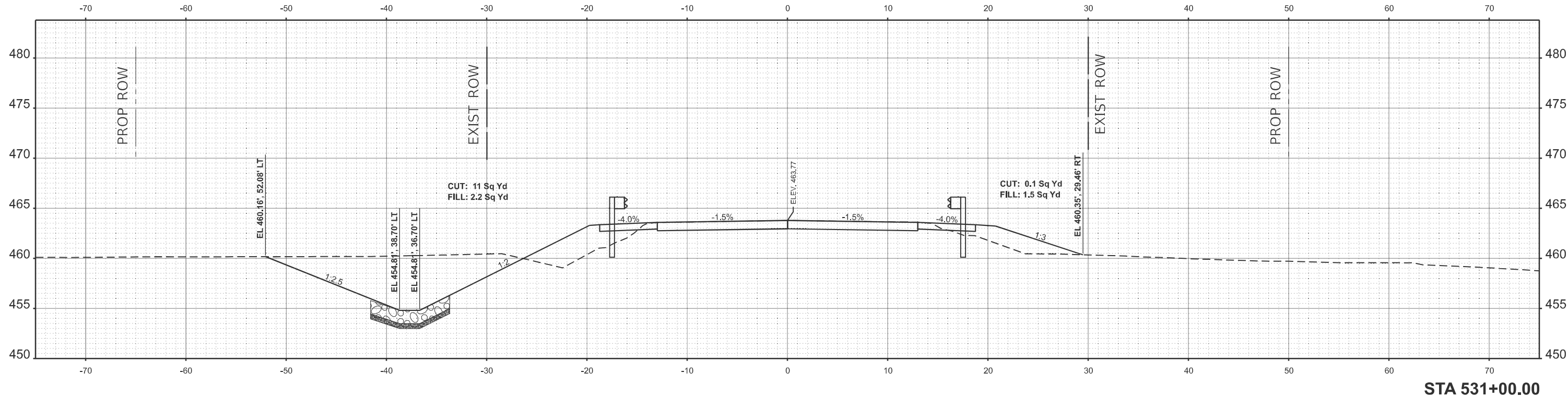
STATE OF ILLINOIS
DEPARTMENT OF TRANSPORTATION

CROSS SECTION

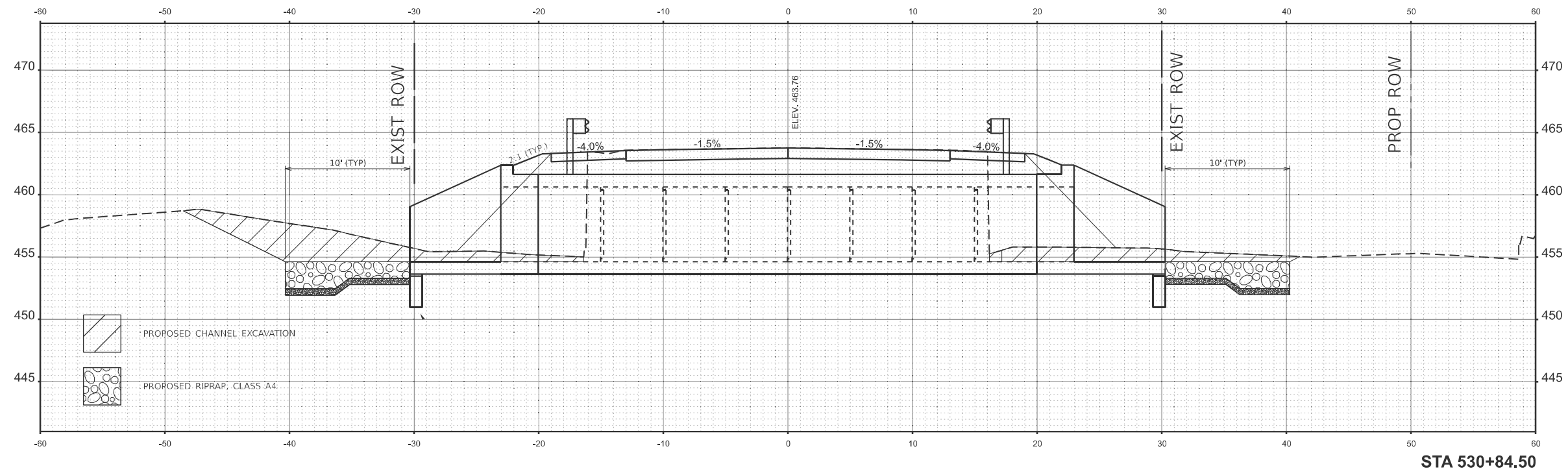
SCALE: 1"=5' SHEET OF 5 SHEETS STA. 530+00.00 R2 TO STA. 530+50.00 R2

F.A.P	SECTION	COUNTY	TOTAL	SHEET
RTE.	19CR-1	PERRY	SHEETS	NO.
329			28	25
CONTRACT NO. 78949				
ILLINOIS FED. AID PROJECT				

DATE	
BY	
SURVEYED	
PLOTTED	
TEMPLATE	
AREAS	
CHECKED	
NO.	
FINL	
SURVEY	
NOTE BOOK	
AREAS	
CHECKED	
NO.	



DATE	
BY	
SURVEYED	
PLOTTED	
TEMPLATE	
AREAS	
CHECKED	
NO.	
ORIGINAL	
SURVEY	
NOTE BOOK	
AREAS	
CHECKED	
NO.	



MODEL: I:\14 - 530+84.50 R2 (Sheet)
FILE NAME: G:\p\work\perry\perrysonis\0818474\0978949-STA-XX-Section.dgn

USER NAME =	thomas.jefferson	DESIGNED -	REVISD -
		DRAWN -	REVISD -
PLOT SCALE =	SSCALE\$	CHECKED -	REVISD -
PLOT DATE =	8/8/2024	DATE -	REVISD -

**STATE OF ILLINOIS
DEPARTMENT OF TRANSPORTATION**

CROSS SECTIONS

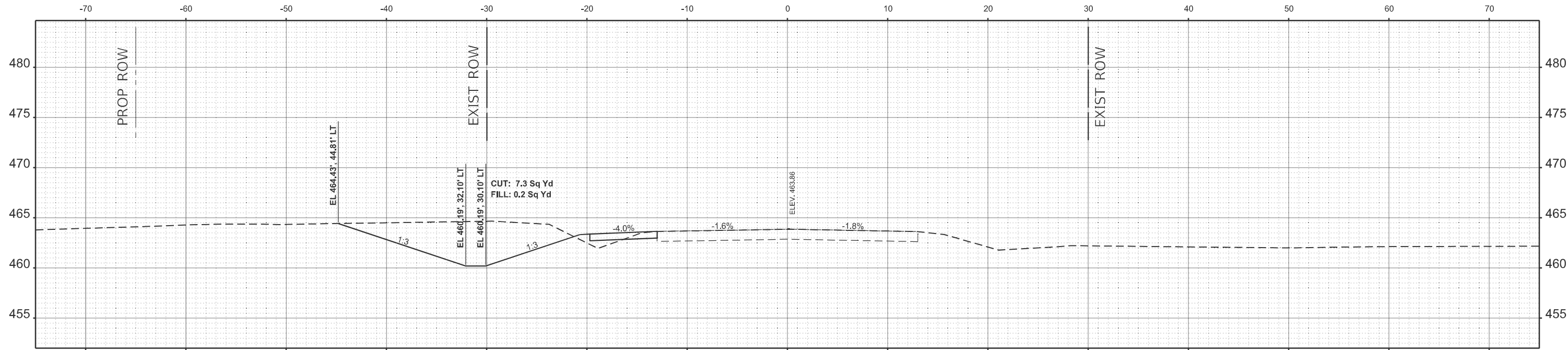
SCALE: 1"=5' SHEET OF 5 SHEETS STA. 530+84.50 R2 TO STA. 531+00.00 R2

F.A.P RTE.	SECTION	COUNTY	TOTAL SHEETS	SHEET NO.
329	19CR-1	PERRY	28	26
CONTRACT NO. 78949				
ILLINOIS FED. AID PROJECT				

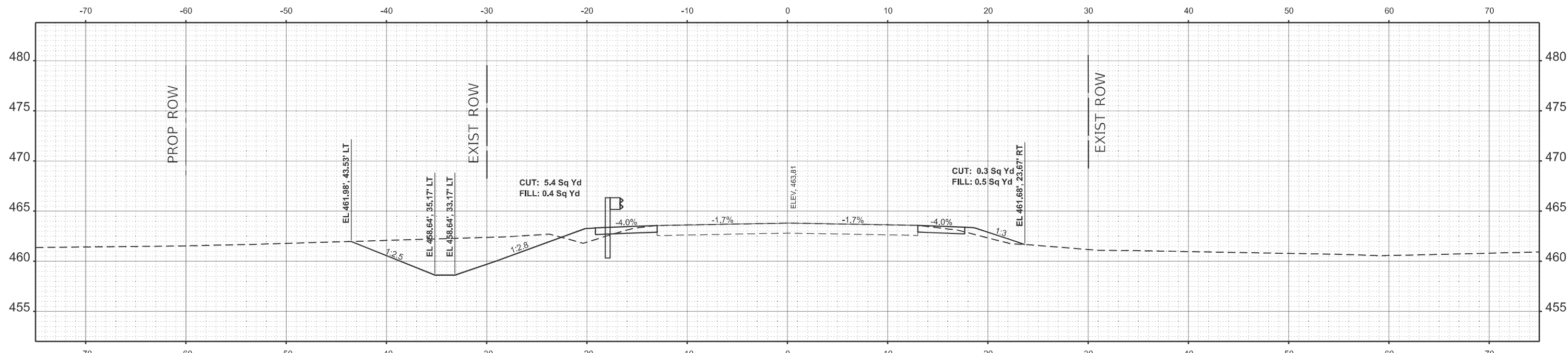
BY	DATE
FINL SURVEY	SURVEYED
NOTE BOOK	PLOTTED
NO.	TEMPLATE
	AREAS
	CHECKED

BY	DATE
ORIGINAL SURVEY	SURVEYED
NOTE BOOK	PLOTTED
NO.	TEMPLATE
	AREAS
	CHECKED

MODEL: IL154 - 531+50.00 R2 (Sheet)
 FILE NAME: C:\pwworking\jeffersons\0818474\1D978949-STA-X-Section.dgn



STA 532+00.00



STA 531+50.00

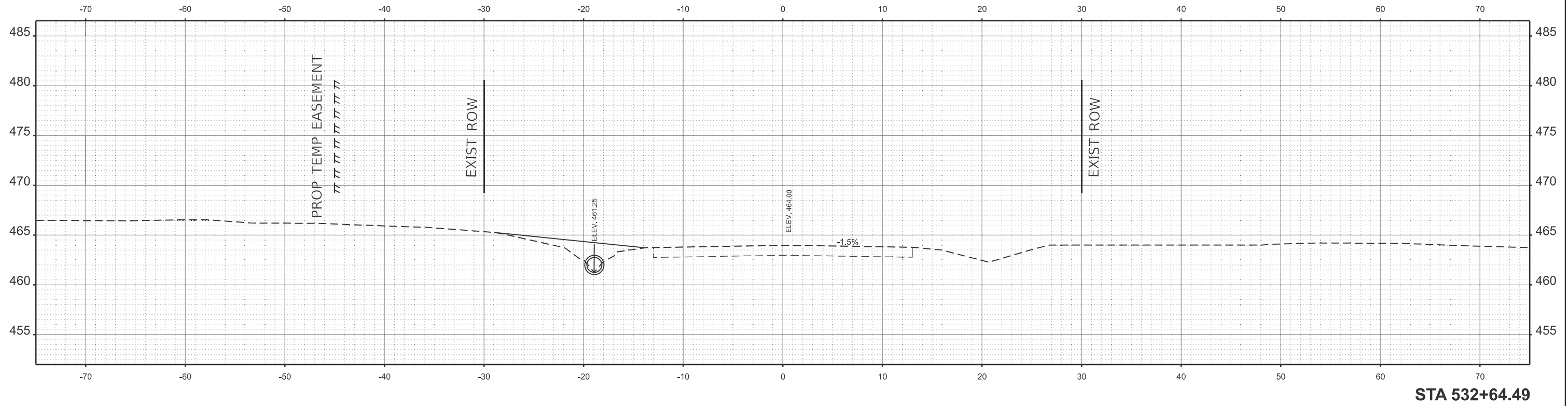
USER NAME = thomas.jefferson	DESIGNED -	REVISED -
	DRAWN -	REVISED -
PLOT SCALE = \$SCALE\$	CHECKED -	REVISED -
PLOT DATE = 8/8/2024	DATE -	REVISED -

**STATE OF ILLINOIS
DEPARTMENT OF TRANSPORTATION**

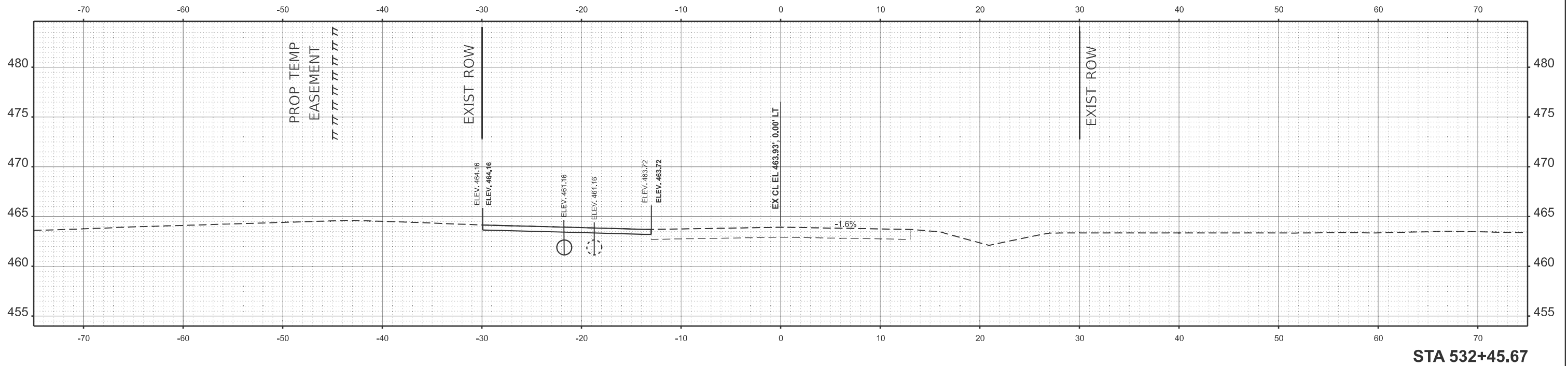
CROSS SECTION

SCALE: 1"=5' SHEET OF 5 SHEETS STA. 531+50.00 R2 TO STA. 532+00.00 R2

F.A.P RTE.	SECTION	COUNTY	TOTAL SHEETS	SHEET NO.
329	19CR-1	PERRY	28	27
CONTRACT NO. 78949				
ILLINOIS FED. AID PROJECT				



STA 532+64.49



STA 532+45.67

MODEL: I:\156_532+45.67_25 PC (Sheet)
 FILE NAME: P:\BSP\Projects\156\156_532+45.67_25 PC (Sheet).dgn

USER NAME = thomas.jefferson	DESIGNED -	REVISED -
	DRAWN -	REVISED -
PLOT SCALE = \$SCALE\$	CHECKED -	REVISED -
PLOT DATE = 8/12/2024	DATE -	REVISED -

**STATE OF ILLINOIS
DEPARTMENT OF TRANSPORTATION**

CROSS-SECTIONS

SCALE: 1"=5' SHEET 28 OF 5 SHEETS STA. TO STA.

F.A.P. RTE.	SECTION	COUNTY	TOTAL SHEETS	SHEET NO.
329	19CR-1	PERRY	28	28
CONTRACT NO. 78949				
ILLINOIS FED. AID PROJECT				