

STATE OF ILLINOIS
DEPARTMENT OF TRANSPORTATION

F.A.P. RITE	SECTION	COUNTY	TOTAL SHEETS	SHEET NO.
331	(10,11,11-1)RS-2	GALLATIN	31	1
		ILLINOIS	CONTRACT NO. 78A67	

**PROPOSED
HIGHWAY PLANS**

FAP ROUTE 331 (IL 13)
SECTION (10,11,11-1)RS-2
PROJECT NHPP-DLHD(014)

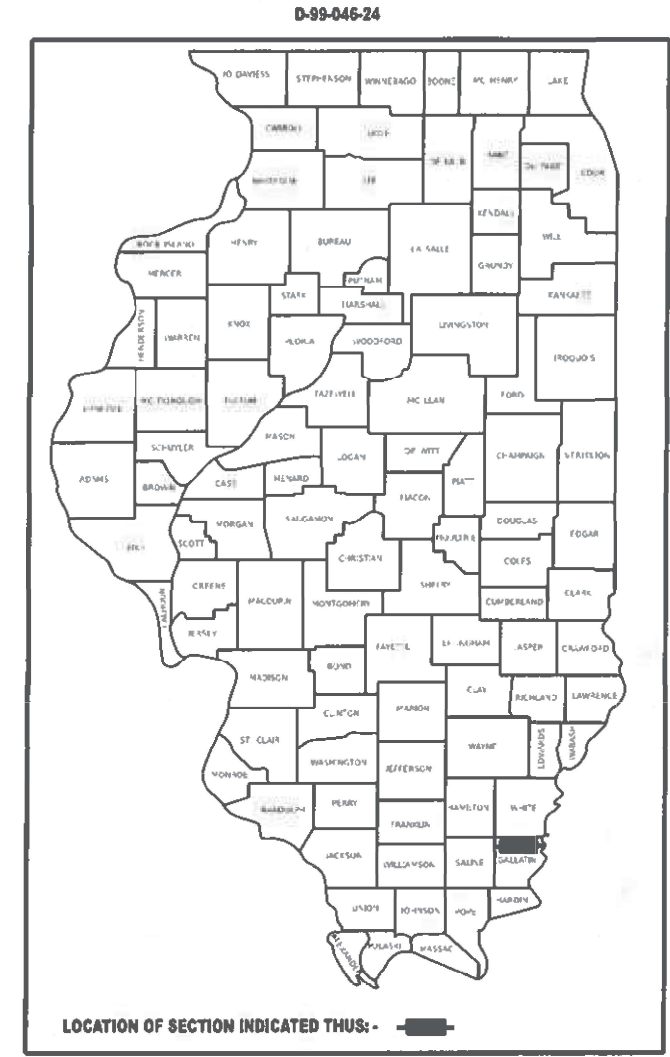
**PATCHING & RESURFACING PAVEMENT & GUARDRAIL IMPROVEMENTS
GALLATIN COUNTY**

FOR INDEX OF SHEETS, SEE SHEET NO. 3
FOR SUMMARY OF QUANTITIES, SEE SHEET NO. 5-8

TRAFFIC DATA

2023 ADT = 3,550 WITH 7.9% TRUCKS

C-99-093-24



IMPROVEMENT BEGINS
STA 1830+10.98

TOWNSHIPS
EQUALITY
GOLD HILL
SHAWNEE

STATION EQUATIONS

- STA EQ 1842+53.65 BK = STA. 1849+41.36 AH
- STA EQ 1982+53.72 BK = STA. 1982+36.24 AH
- STA EQ 2030+61.39 BK = STA. 2037+82.80 AH
- STA EQ 2064+81.50 BK = STA. 2064+85.00 AH
- STA EQ 2103+11.00 BK = STA. 2103+00.00 AH
- STA EQ 2216+74.50 BK = STA. 0+00.00 AH
- STA EQ 2173+91.00 BK = STA. 2174+00.00 AH
- STA EQ 85+67.50 BK = STA. K 0+01.78 AH

DESIGN DESIGNATION :
COORDINATE SYSTEM : EPSG: 102671
NAD 1983 STATE PLANE ILLINOIS EAST FIPS 1201 FEET

POSTED SPEED : 40 & 55 MPH

J.U.L.I.E.
JOINT UTILITY LOCATION INFORMATION FOR EXCAVATION
1-800-892-0123
OR 811



IMPROVEMENT ENDS
STA K 3+57.75

PROJECT ENGINEER: NATHAN TAYLOR
PROJECT DESIGNER: ROBERT HANDY

GROSS LENGTH = 46,293.35 FT. = 8.76 MILES
NET LENGTH = 45,190.31 FT. = 8.56 MILES

CONTRACT NO. 78A67

STATE OF ILLINOIS
DEPARTMENT OF TRANSPORTATION

SUBMITTED August 16 2024
Rick H. Brown
REGION FIVE ENGINEER

October 4, 2024
[Signature]
ENGINEER OF DESIGN AND ENVIRONMENT

October 4, 2024
[Signature]
DIRECTOR OF HIGHWAYS PROJECT IMPLEMENTATION

**PRINTED BY THE AUTHORITY
OF THE STATE OF ILLINOIS**

MODEL: Signature [Sheet]
FILE NAME: \\nas01per01\share\dot\Office\District\SCSD\Projects\78A67\CA\001a\CA\88888\0578A67_SHA-Cover_Sig.dgn

Prepared By: Susan Poe
DISTRICT STUDIES & PLANS ENGINEER

Examined By: Nancy Lee
DISTRICT LAND ACQUISITION ENGINEER

Examined By: Chris
DISTRICT PROGRAM DEVELOPMENT ENGINEER

Examined By: Z. Coon
DISTRICT OPERATIONS ENGINEER

Examined By: Dagmar Melis
DISTRICT PROJECT IMPLEMENTATION ENGINEER

Examined By: Brian Webb
DISTRICT CONSTRUCTION ENGINEER

Examined By: Ann Hays
DISTRICT MATERIALS ENGINEER

USER NAME = robert.handy	DESIGNED -	REVISED -
	DRAWN -	REVISED -
PLOT SCALE = 0.16666633 1/in.	CHECKED -	REVISED -
PLOT DATE = 8/14/2024	DATE -	REVISED -

**STATE OF ILLINOIS
DEPARTMENT OF TRANSPORTATION**

SIGNATURE SHEET

SCALE: SHEET OF SHEETS STA. TO STA.

F.A.P. RTE.	SECTION	COUNTY	TOTAL SHEETS	SHEET NO.
331	(10,11,11-1)RS-2	GALLATIN	31	2
CONTRACT NO. 78A67				
ILLINOIS FED. AID PROJECT				

INDEX OF SHEETS

SHEET NO	DESCRIPTION
1	COVER SHEET
2	SIGNATURE SHEET
3	INDEX OF SHEETS, GENERAL NOTES, HIGHWAY STANDARDS, COMMITMENTS & MTD TABLE
4	MIX DESIGN REQUIREMENTS
5-8	SUMMARY OF QUANTITIES
9-12	TYPICAL SECTIONS: IL 13
13	RESURFACING PAVEMENT SCHEDULE
14	SHOULDER SCHEDULE
15	ENTRANCE AND SIDEROAD SCHEDULES
16-17	PAVEMENT PATCHING EASTBOUND SCHEDULE
18	PAVEMENT PATCHING-WESTBOUND SCHEDULE & SUMMARY TOTALS
19	GUARDRAIL SCHEDULE & CLASS B PAVEMENT SCHEDULE
20	PAVEMENT MARKING SCHEDULE
21	RAISED REFLECTIVE PAVEMENT MARKER SCHEDULE
22	WALNUT RD INTERSECTION PAVEMENT MARKINGS
23	WINGWALL MODIFICATION DETAILS SN 030-0016 & SN 030-0017
24	PARAPET MODIFICATION DETAIL-SN 030-0016
25	PARAPET MODIFICATION DETAIL (NORTH END)-SN 030-0017
26	PARAPET MODIFICATION DETAIL (SOUTH END)-SN 030-0017
27	STEEL RAILING, TYPE CO-10 DETAILS STRUCTURE NO. 030-0001
28	SIDEROAD AND ENTRANCE DETAILS
29	BUTT JOINT DETAILS
30	PAVEMENT TRANSITION DETAIL
31	TEMPORARY HOT MIX ASPHALT TRANSITIONS

HIGHWAY STANDARDS

000001-08 STANDARDSYMBOLSABBREVIATIONS-PATTERNS-001	701011-04 OFF-ROAD MOVING OPERATIONS, 2L, 2W, DAY ONLY
001001-02 AREAS OF REINFORCEMENT BARS	701201-05 LANE CLOSURE, 2L, 2W, DAY ONLY, SPEEDS 45 MPH OR MORE
001006 DECIMAL OF AN INCH AND OF A FOOT	701301-04 LANE CLOSURE, 2L, 2W, SHORT TIME OPERATIONS
420001-10 PAVEMENT JOINTS	701306-04 LANE CLOSURE, 2L, 2W, SLOW MOVING OPERATIONS DAY ONLY, FOR SPEEDS 45 MPH OR MORE
420701-03 PAVEMENT WELDED WIRE REINFORCEMENT	
442101-09 CLASS B PATCHES	701311-03 LANE CLOSURE, 2L, 2W, MOVING OPERATIONS - DAY ONLY
442201-03 CLASS C & D PATCHES	701336-07 LANE CLOSURE, 2L, 2W, WORK AREAS IN SERIES, FOR SPEEDS 45MPH OR MORE
630001-13 STEEL PLATE BEAM GUARDRAIL	701501-06 URBAN LANE CLOSURE, 2L 2W, UNDIVIDED
630106-02 LONG-SPAN GUARDRAIL OVER CULVERT	701701-10 URBAN LANE CLOSURE, MULTILANE INTERSECTION
631033-09 TRAFFIC BARRIER TERMINAL, TYPE 6B	701901-09 TRAFFIC CONTROL DEVICES
631066- TRAFFIC BARRIER TERMINAL, TYPE 14	725001-01 OBJECT AND TERMINAL MARKERS
701001-02 OFF-ROAD OPERATIONS, 2L, 2W, MORE THAN 15 FT AWAY	780001-05 TYPICAL PAVEMENT MARKINGS
701006-05 OFF-ROAD OPERATIONS, 2L, 2W, 15 FT TO 24 IN FROM PAVEMENT EDGE	781001-04 TYPICAL APPLICATIONS RAISED REFLECTIVE PAVEMENT MARKERS
630301-09 SHOULDER WIDENING FOR TYPE 1 (SPECIAL) GUARDRAIL TERMINALS	782006-01 GUARDRAIL AND BARRIER WALL REFLECTOR MOUNTING DETAILS

GENERAL NOTES

FACTORS USED FOR ESTIMATING PLAN QUANTITIES ARE AS FOLLOWS AND SHALL NOT BE USED FOR THE BASIS OF FINAL QUANTITIES:

ALL HOT MIX ASPHALT 2.016 TONS/CU. YD.

ALL AGGREGATE 2.05 TONS/CU. YD.

THE QUANTITY OF SHORT TERM PAVEMENT MARKING SHOWN IN THE PLANS IS BASED ON ONE APPLICATION EACH FOR THE HMA SURFACE REMOVAL, BINDER COURSE, AND SURFACE COURSE

AT ALL LOCATIONS WHERE THE PROPOSED HOT MIX ASPHALT OR CONCRETE PAVEMENT JOINS AN EXISTING HOT MIX ASPHALT OR CONCRETE PAVEMENT, A FULL DEPTH SAWED JOINT SHALL BE CONSTRUCTED. THE COST OF THIS JOINT WILL BE INCLUDED IN THE COST OF THE TYPE OF PAVEMENT BEING CONSTRUCTED.

HMA RESURFACING SHALL BE PLACED IN A SEQUENCE THAT WILL MINIMIZE THE TIME THE CENTERLINE EDGE IS EXPOSED TO TRAFFIC. WHEN AT THE END OF A DAY'S OPERATION THE EXPOSED CENTERLINE EDGE IS GREATER THAN 2,000 FT, THE CONTRACTOR SHALL BE REQUIRED TO PAVE IN THE ADJACENT LANE ON THE FOLLOWING WORK DAY. PRIOR TO WINTER SHUTDOWN, RESURFACING ON ADJACENT LANES IS TO BE BROUGHT UP TO THE SAME ELEVATION.

LONGITUDINAL JOINT SEALANT SHALL BE PLACED UNDER THE HMA SURFACE COURSE

INCIDENTAL HOT-MIX ASPHALT SURFACING SHALL BE PAVED IN A SEPARATE OPERATION FROM THE MAINLINE PAVEMENT

WHEN SHOULDER RESURFACING OF 6 FT OR LESS IS ALLOWED TO BE PLACED SIMULTANEOUSLY WITH THE ADJACENT TRAFFIC LANE, THE MAINLINE QUALITY MANAGEMENT PROGRAM WILL BE ENFORCED FOR THE MAINLINE AND SHOULDERS.

COMMITMENTS: NONE

MTD CROSSING RESTRICTIONS TABLE

SN & CENTERLINE STATION ROUTE (IL 13)	EXISTING FILL HEIGHT OVER BOX CULVERT		THICKNESS OF EXISTING PAVEMENT OVER BOX CULVERT		MAXIMUM GROSS WEIGHT RESTRICTIONS		MTD CROSSING RESTRICTIONS
	FOOT		FOOT		TONS		
CULVERTS							
SN 030-7002	- STA	1873+30	16.3		0.33		EMPTY
SN 030-7003	- STA	1896+31	10.4		0.33		EMPTY
SN 030-7004	- STA	2020+25	6.5		0.33		EMPTY
SN 030-7005	- STA	2100+81	1.0		0.83		EMPTY
SN 030-7006	- STA	60+33	2.5		0.33		EMPTY
BRIDGES							
SN 030-0001	- STA	2210+50			40		EMPTY
SN 030-0016	- STA	1943+40			40		EMPTY
SN 030-0017	- STA	1972+89			40		EMPTY
SN 030-0023	- STA	81+42			40		EMPTY
SN 030-9900	- STA	K 3+57					NO MTD

STATE OF ILLINOIS
DEPARTMENT OF TRANSPORTATION

INDEX, GENERAL NOTES, MTD TABLE
HIGHWAY STANDARDS, AND LIST OF COMMITMENTS

F.A.P. RTE.	SECTION	COUNTY	TOTAL SHEETS	SHEET NO.
331	(10.11.11-1)RS-2	GALLATIN	31	3
CONTRACT NO. 78A67				
ILLINOIS FED. AID PROJECT				

SCALE: SHEET OF SHEETS STA. TO STA.

MODEL: Index-Chicago-Standards (Sheet)
FILE NAME: P:\GIS\Projects\DOT\Office\Direct\BORG\Project\78A67\CAD\Drawings\DOT\Standards\DOT\Standards.dgn

HMA MIXTURE REQUIREMENTS TABLES

The following HMA mixture requirements are applicable for this project

Location(s):	Hot-Mix Asphalt Surface Course, Incidental HMA
Mixture Use(s):	Hot-Mix Asphalt Surface Course, Mix D, N70
PG:	PG64-22
Design Air Voids:	4.0%, 70 Gyration Design
Mixture Composition: (Gradation Mixture)	IL-9.5 mm
Friction Aggregate:	Mix D
Mixture Weight:	112 lbs/sq yd/in
Quality Management Program:	QCP
Sublot Size:	1,000 tons
Material Transfer Device	Yes

Location(s):	Hot-Mix Asphalt Binder Course
Mixture Use(s):	Hot-Mix Asphalt Binder Course, IL-9.5 FG, N70
PG:	PG64-22
Design Air Voids:	4.0%, 70 Gyration Design
Mixture Composition: (Gradation Mixture)	IL-9.5FG
Friction Aggregate:	None
Mixture Weight:	112 lbs/sq yd/in
Quality Management Program:	QCP
Sublot Size:	1,000 tons
Material Transfer Device	Yes

Location(s):	Hot-Mix Asphalt Surface Course - Shoulders
Mixture Use(s):	Hot-Mix Asphalt Surface Course, Mix C, N30
PG:	PG64-22
Design Air Voids:	4.0%, 30 Gyration Design
Mixture Composition: (Gradation Mixture)	IL-9.5mm
Friction Aggregate:	Mix C
Mixture Weight:	112 lbs/sq yd/in
Quality Management Program:	QC/QA
Sublot Size:	3,000 tons
Material Transfer Device	No

MODEL: HMA Mix Design (Sheet)
FILE NAME: P:\GIS\Projects\DOT\Documents\DOT\Office\District 9\ORIG Project\78A67\CADData\CADTables\DOT78A67-SRFB-Index_GenTables.dgn

USER NAME = robert.handy	DESIGNED -	REVISED -
	DRAWN -	REVISED -
PLOT SCALE = 0.16666833' / in.	CHECKED -	REVISED -
PLOT DATE = 8/15/2024	DATE -	REVISED -

**STATE OF ILLINOIS
DEPARTMENT OF TRANSPORTATION**

MIXTURE REQUIREMENTS

SCALE: SHEET OF SHEETS STA. TO STA.

F.A.P. RTE.	SECTION	COUNTY	TOTAL SHEETS	SHEET NO.
331	(10.11.11-1)RS-2	GALLATIN	31	4
CONTRACT NO. 78A67				
ILLINOIS FED. AID PROJECT				

SUMMARY OF QUANTITIES

COUNTY:	GALLATIN CO
ROUTE:	FAP 331
FUNDING:	80% FEDERAL 20% STATE
LOCATION:	RURAL
	ROADWAY
	0005

CODE NUMBER	ITEM DESCRIPTION	UNIT	
40600290	BITUMINOUS MATERIALS (TACK COAT)	POUND	98,544
40600370	LONGITUDINAL JOINT SEALANT	FOOT	47,084
40600982	HOT-MIX ASPHALT SURFACE REMOVAL - BUTT JOINT	SQ YD	2,216
40600990	TEMPORARY RAMP	SQ YD	1,092
40602970	HOT-MIX ASPHALT BINDER COURSE, IL-9.5FG, N70	TON	8,442
40604062	HOT-MIX ASPHALT SURFACE COURSE, IL-9.5, MIX "D", N70	TON	10,109
40800050	INCIDENTAL HOT-MIX ASPHALT SURFACING	TON	409
44000151	HOT-MIX ASPHALT SURFACE REMOVAL, 1/2"	SQ YD	36,870
44000155	HOT-MIX ASPHALT SURFACE REMOVAL, 1 1/2"	SQ YD	1,660
44000156	HOT-MIX ASPHALT SURFACE REMOVAL, 1 3/4"	SQ YD	109,961
44000160	HOT-MIX ASPHALT SURFACE REMOVAL, 2 3/4"	SQ YD	9,960
44200050	WELDED WIRE REINFORCEMENT	SQ YD	267
44201106	CLASS B PATCHES, TYPE IV, 20 INCH	SQ YD	267
44201299	DOWEL BARS 1 1/2"	EACH	340
44201373	CLASS C PATCHES, TYPE I, 12 INCH	SQ YD	2

MODEL: SDC-1 (1/18/11)
 FILE NAME: P:\GIS\Projects\DOT\Documents\DOT Office\District 9\ORIG Project\78A67\CAD\DrawCAD\Drawings\DOT\78A67-SRF-SSQ.dgn

USER NAME = robert.handy	DESIGNED -	REVISED -	
	DRAWN -	REVISED -	
PLOT SCALE = 0.16666633' / in.	CHECKED -	REVISED -	
PLOT DATE = 8/15/2024	DATE -	REVISED -	

**STATE OF ILLINOIS
DEPARTMENT OF TRANSPORTATION**

SUMMARY OF QUANTITIES

SCALE: SHEET 1 OF 4 SHEETS STA. TO STA.

F.A.P. RTE.	SECTION	COUNTY	TOTAL SHEETS	SHEET NO.
331	(10.11.11-1)RS-2	GALLATIN	31	5
CONTRACT NO. 78A67				
ILLINOIS FED. AID PROJECT				

SUMMARY OF QUANTITIES - CONT

COUNTY:	GALLATIN CO
ROUTE:	FAP 331
FUNDING:	80% FEDERAL 20% STATE
LOCATION:	RURAL
	ROADWAY
	0005

CODE NUMBER	ITEM DESCRIPTION	UNIT	
44201377	CLASS C PATCHES, TYPE II, 12 INCH	SQ YD	1,565
44201453	CLASS C PATCHES, TYPE II, 19 INCH	SQ YD	873
44201455	CLASS C PATCHES, TYPE III, 19 INCH	SQ YD	49
44201457	CLASS C PATCHES, TYPE IV, 19 INCH	SQ YD	72
44213200	SAW CUTS	FOOT	848
44213204	TIE BARS 3/4"	EACH	36
48102100	AGGREGATE WEDGE SHOULDER, TYPE B	TON	1,970
48203100	HOT-MIX ASPHALT SHOULDERS	TON	3,230
50104000	BRIDGE RAIL REMOVAL	FOOT	144
50300255	CONCRETE SUPERSTRUCTURE	CU YD	7.2
50800205	REINFORCEMENT BARS, EPOXY COATED	POUND	1,520
50900207	STEEL RAILING, TYPE CO-10	FOOT	249
* 63000001	STEEL PLATE BEAM GUARDRAIL, TYPE A, 6 FOOT POSTS	FOOT	5,238
* 63000350	LONG-SPAN GUARDRAIL OVER CULVERT, 12 FT 6 IN SPAN	FOOT	75
* 63100089	TRAFFIC BARRIER TERMINAL, TYPE 6B	EACH	8

* SPECIALTY ITEM

MODEL: S:\02_18\h\h\...
 FILE NAME: ...

USER NAME = robert.handy	DESIGNED -	REVISED -	
	DRAWN -	REVISED -	
PLOT SCALE = 0.16666833' / in.	CHECKED -	REVISED -	
PLOT DATE = 8/15/2024	DATE -	REVISED -	

**STATE OF ILLINOIS
DEPARTMENT OF TRANSPORTATION**

SUMMARY OF QUANTITIES

SCALE: SHEET 2 OF 4 SHEETS STA. TO STA.

F.A.P. RTE.	SECTION	COUNTY	TOTAL SHEETS	SHEET NO.
331	(10.11.11-1)RS-2	GALLATIN	31	6
CONTRACT NO. 78A67				
ILLINOIS FED. AID PROJECT				

SUMMARY OF QUANTITIES - CONT

COUNTY:	GALLATIN CO
ROUTE:	FAP 331
FUNDING:	80% FEDERAL 20% STATE
LOCATION:	RURAL
	ROADWAY
	0005

CODE NUMBER	ITEM DESCRIPTION	UNIT	QUANTITY
* 63100119	TRAFFIC BARRIER TERMINAL, TYPE 14	EACH	4
* 63100167	TRAFFIC BARRIER TERMINAL, TYPE 1 (SPECIAL) TANGENT	EACH	14
63200310	GUARDRAIL REMOVAL	FOOT	6,228
67000400	ENGINEER'S FIELD OFFICE, TYPE A	CAL MO	5
67100100	MOBILIZATION	L SUM	1
70100450	TRAFFIC CONTROL AND PROTECTION, STANDARD 701201	L SUM	1
70100460	TRAFFIC CONTROL AND PROTECTION, STANDARD 701306	L SUM	1
70100600	TRAFFIC CONTROL AND PROTECTION, STANDARD 701336	L SUM	1
70102620	TRAFFIC CONTROL AND PROTECTION, STANDARD 701501	L SUM	1
70102635	TRAFFIC CONTROL AND PROTECTION, STANDARD 701701	L SUM	1
70107025	CHANGEABLE MESSAGE SIGN	CAL DA	28
70300100	SHORT TERM PAVEMENT MARKING	FOOT	12,679
70300150	SHORT TERM PAVEMENT MARKING REMOVAL	SQ FT	4,227
70300211	TEMPORARY PAVEMENT MARKING LETTERS AND SYMBOLS - PAINT	SQ FT	60
70300221	TEMPORARY PAVEMENT MARKING - LINE 4" - PAINT	FOOT	110,383

* SPECIALTY ITEM

MODEL: SDC - [b]htrj
FILE NAME: P:\DOT\Documents\DOT Office\District 9\ORD Project\78A67\CADData\CAD\Sheet\DOT78A67-SR-331.dwg

SUMMARY OF QUANTITIES - CONT

COUNTY:	GALLATIN CO
ROUTE:	FAP 331
FUNDING:	80% FEDERAL 20% STATE
LOCATION:	RURAL
	ROADWAY
	0005

CODE NUMBER	ITEM DESCRIPTION	UNIT	QUANTITY
70300261	TEMPORARY PAVEMENT MARKING - LINE 12"- PAINT	FOOT	380
70300281	TEMPORARY PAVEMENT MARKING - LINE 24"- PAINT	FOOT	40
* 72501000	TERMINAL MARKER - DIRECT APPLIED	EACH	14
* 78000100	THERMOPLASTIC PAVEMENT MARKING - LETTERS AND SYMBOLS	SQ FT	60
* 78000200	THERMOPLASTIC PAVEMENT MARKING - LINE 4"	FOOT	110,383
* 78000600	THERMOPLASTIC PAVEMENT MARKING - LINE 12"	FOOT	380
* 78000650	THERMOPLASTIC PAVEMENT MARKING - LINE 24"	FOOT	40
* 78100100	RAISED REFLECTIVE PAVEMENT MARKER	EACH	667
* 78200005	GUARDRAIL REFLECTORS, TYPE A	EACH	86
78300200	RAISED REFLECTIVE PAVEMENT MARKER REMOVAL	EACH	667
78300201	PAVEMENT MARKING REMOVAL - GRINDING	SQ FT	4,227
∅ Z0076600	TRAINEES	HOUR	1000
Z0034105	MATERIAL TRANSFER DEVICE	TON	18,551
∅ Z0076604	TRAINEES TRAINING PROGRAM GRADUATE	HOUR	1000

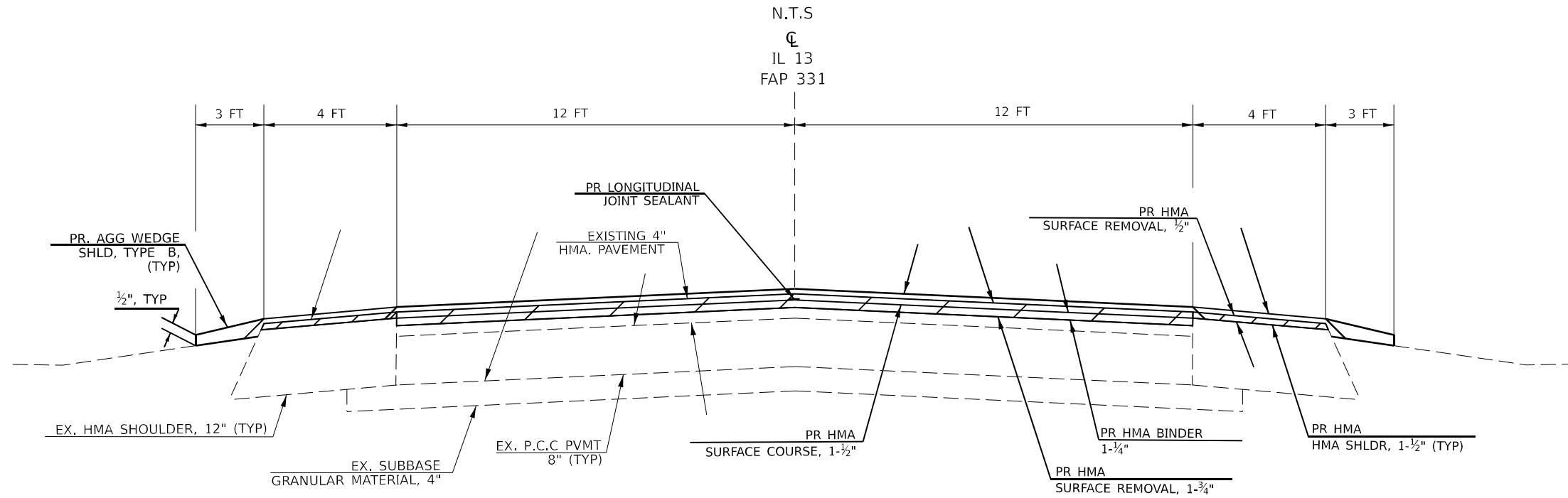
* SPECIALTY ITEM
 ∅ 0042

REV - MS

MODEL: S:\001 (Sheet)
 FILE NAME: P:\MIDOT\Documents\DOT Office\District 9\ORD Project\78A67\CAD\Drawings\DOT\78A67-SR-000.dgn

USER NAME = robert.handy PLOT SCALE = 0.16666833' / in. PLOT DATE = 8/15/2024	DESIGNED - DRAWN - CHECKED - DATE -	REVISED - REVISED - REVISED - REVISED -	STATE OF ILLINOIS DEPARTMENT OF TRANSPORTATION	SUMMARY OF QUANTITIES	SCALE: SHEET 4 OF 4 SHEETS STA. TO STA.	F.A.P. RTE. 331 SECTION (10.11.11-1)RS-2 COUNTY GALLATIN TOTAL SHEETS 31 SHEET NO. 8 CONTRACT NO. 78A67 ILLINOIS FED. AID PROJECT
-------------------------------------------------------------------------------------	----------------------------------------------	--------------------------------------------------	----------------------------------------------------------------------------	------------------------------	-----------------------------------------	-----------------------------------------------------------------------------------------------------------------------------------------------------

TYPICAL SECTION



STATION EQUATIONS

STA EQ 1842+53.65 BK = STA. 1849+41.36 AH
 STA EQ 1982+53.72 BK = STA. 1982+36.24 AH
 STA EQ 2030+61.39 BK = STA. 2037+82.80 AH

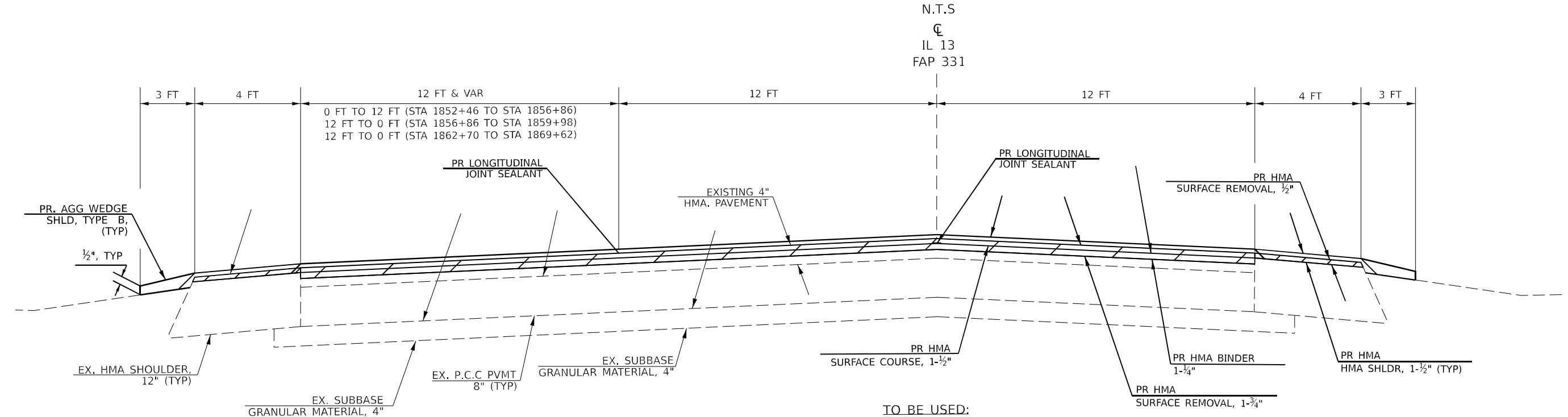
TO BE USED:

STA 1830+10.98 TO STA 1852+46
 STA 1869+62 TO STA 2038+50.41

OMISSIONS

(GAP SN 030-0016) STA 1942+26.58 TO STA 1944+53.42
 (GAP SN 030-0017) STA 1971+81.22 TO STA 1973+95.92

TYPICAL SECTION



TO BE USED:

STA 1852+46 TO STA 1859+98
 STA 1862+70 TO STA 1869+62

MODEL: Typical 1 (Sheet)
 FILE NAME: \\p01pcplb01\home\robert.handy\p01\DOT\Documents\DOT Office\District 9\ORD Project\78A67\CADD\Drawings\DOT\9A67-SRD-2-Typicals.dwg

USER NAME = robert.handy	DESIGNED -	REVISED -
PLOT SCALE = 0.16666833 / in.	DRAWN -	REVISED -
PLOT DATE = 8/15/2024	CHECKED -	REVISED -
	DATE -	REVISED -

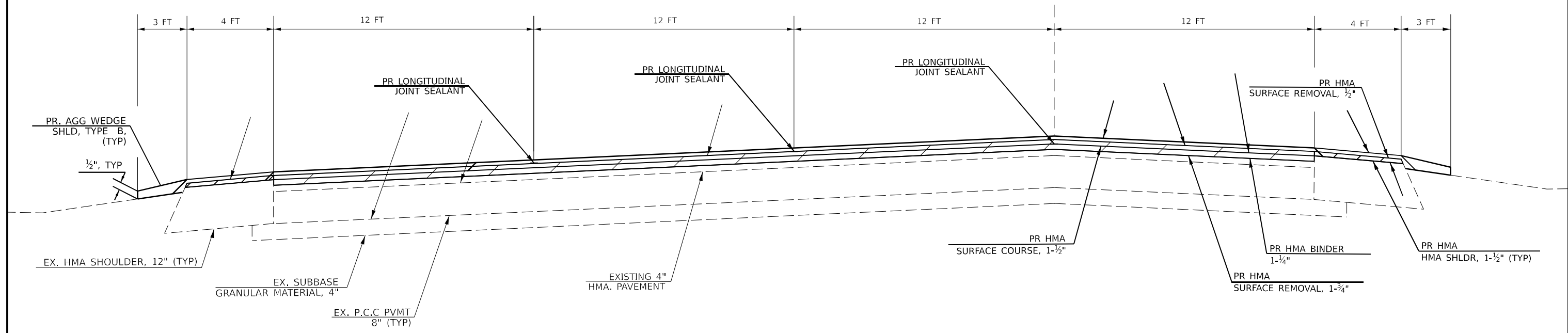
**STATE OF ILLINOIS
 DEPARTMENT OF TRANSPORTATION**

TYPICAL SECTIONS

SCALE: SHEET 1 OF 4 SHEETS STA. TO STA.

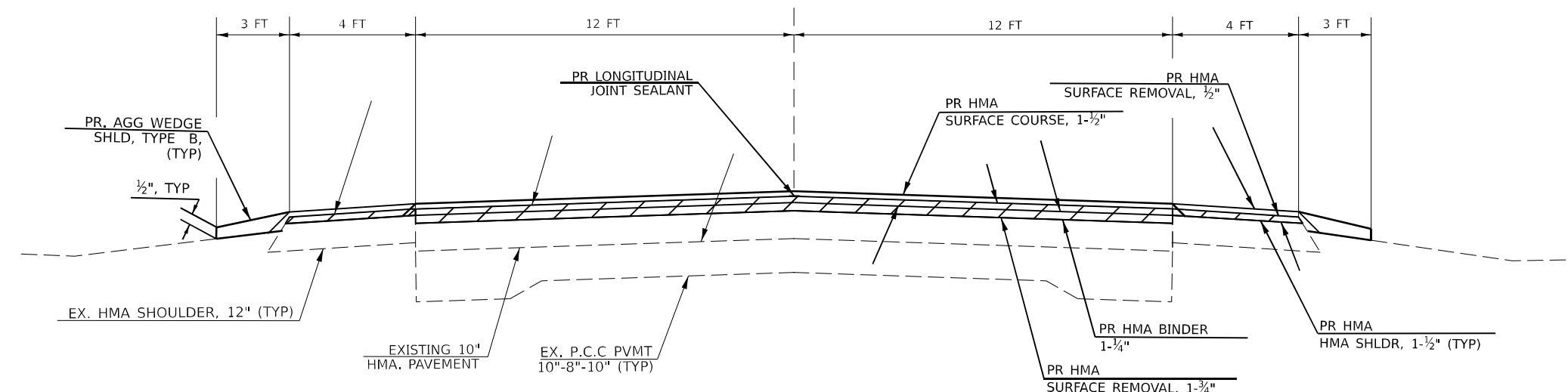
F.A.P. RTE.	SECTION	COUNTY	TOTAL SHEETS	SHEET NO.
331	(10.11.11-1)RS-2	GALLATIN	31	9
CONTRACT NO. 78A67				
ILLINOIS FED. AID PROJECT				

IL 13
FAP 331



TO BE USED:
STA 1859+98 TO STA 1862+70

IL 13
FAP 331



STATION EQUATIONS
 STA EQ 2064+81.50 BK = STA. 2064+85.00 AH
 STA EQ 2103+11.00 BK = STA. 2103+00.00 AH
 STA EQ 2173+91.00 BK = STA. 2174+00.00 AH

TO BE USED:
 STA 2038+50.41 TO STA 2050+00
 STA 2050+00 TO STA 2058+00 (EXISTING HMA THICKNESS 12.5")
 STA 2058+00 TO STA 2173+91BK

MODEL: Typical 2 (Sheet)
 FILE NAME: P:\GIS\Projects\DOT\Office\District 9\ORD Projects\78A67\CAD\Drawings\DOT\78A67-SHP-2-Typicals.dwg

USER NAME = robert.handy	DESIGNED -	REVISED -
PLOT SCALE = 0.16666833 / in.	DRAWN -	REVISED -
PLOT DATE = 8/15/2024	CHECKED -	REVISED -
	DATE -	REVISED -

STATE OF ILLINOIS
DEPARTMENT OF TRANSPORTATION

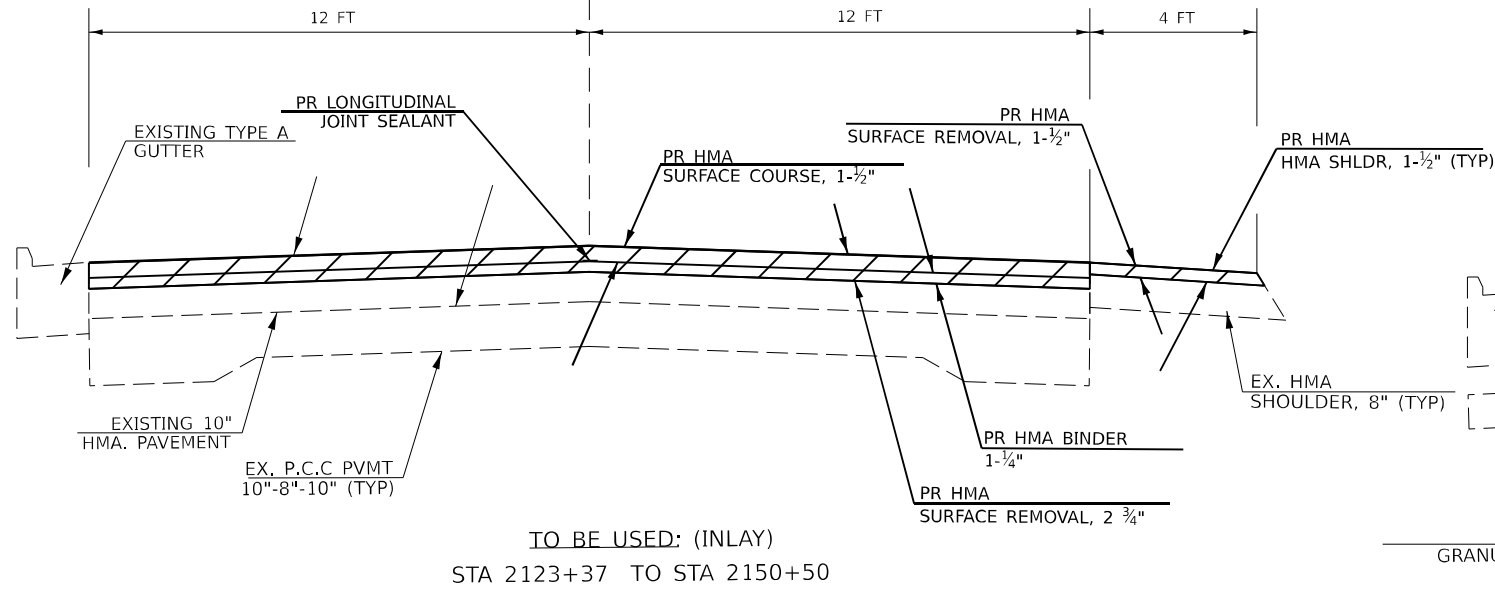
TYPICAL SECTIONS

SCALE: SHEET 2 OF 4 SHEETS STA. TO STA.

F.A.P. RTE.	SECTION	COUNTY	TOTAL SHEETS	SHEET NO.
331	(10.11.11-1)RS-2	GALLATIN	31	10
CONTRACT NO. 78A67				
ILLINOIS FED. AID PROJECT				

TYPICAL SECTION

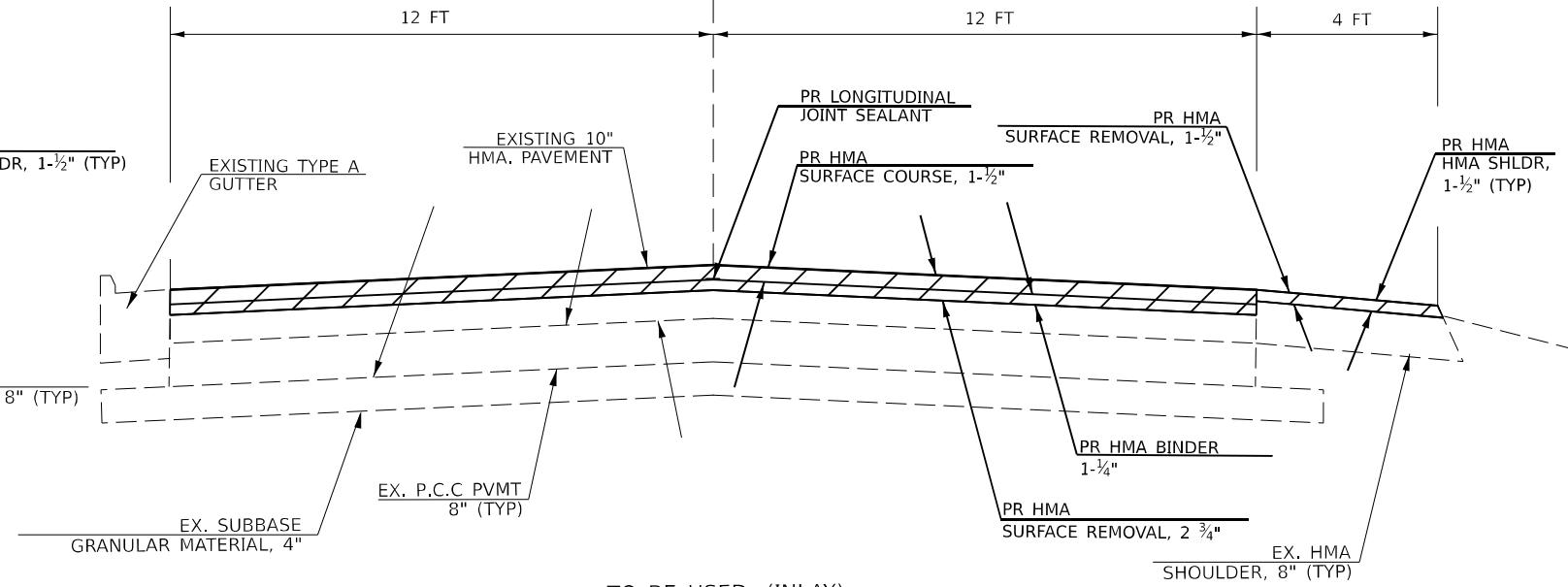
N.T.S
 CL
 IL 13
 FAP 331



TO BE USED: (INLAY)
 STA 2123+37 TO STA 2150+50

TYPICAL SECTION

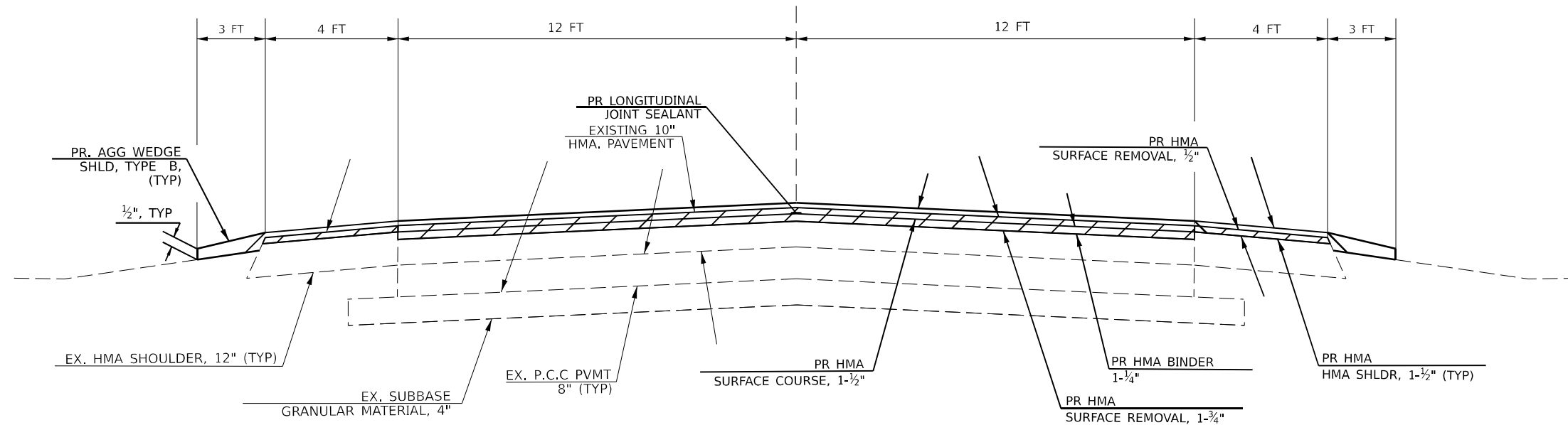
N.T.S
 CL
 IL 13
 FAP 331



TO BE USED: (INLAY)
 STA 2150+50 TO STA 2160+33

TYPICAL SECTION

N.T.S
 CL
 IL 13
 FAP 331



TO BE USED:
 STA 2160+33 TO STA 2171+00

MODEL: Typical 3 (Sheet)
 FILE NAME: P:\GIS\Projects\DOT\Office\District 9\ORD Project\78A67\CADD\Drawings\DOT\78A67-SR03-Typicals.dwg

USER NAME = robert.handy	DESIGNED -	REVISED -
PLOT SCALE = 0.16666633' / in.	DRAWN -	REVISED -
PLOT DATE = 8/15/2024	CHECKED -	REVISED -
	DATE -	REVISED -

**STATE OF ILLINOIS
 DEPARTMENT OF TRANSPORTATION**

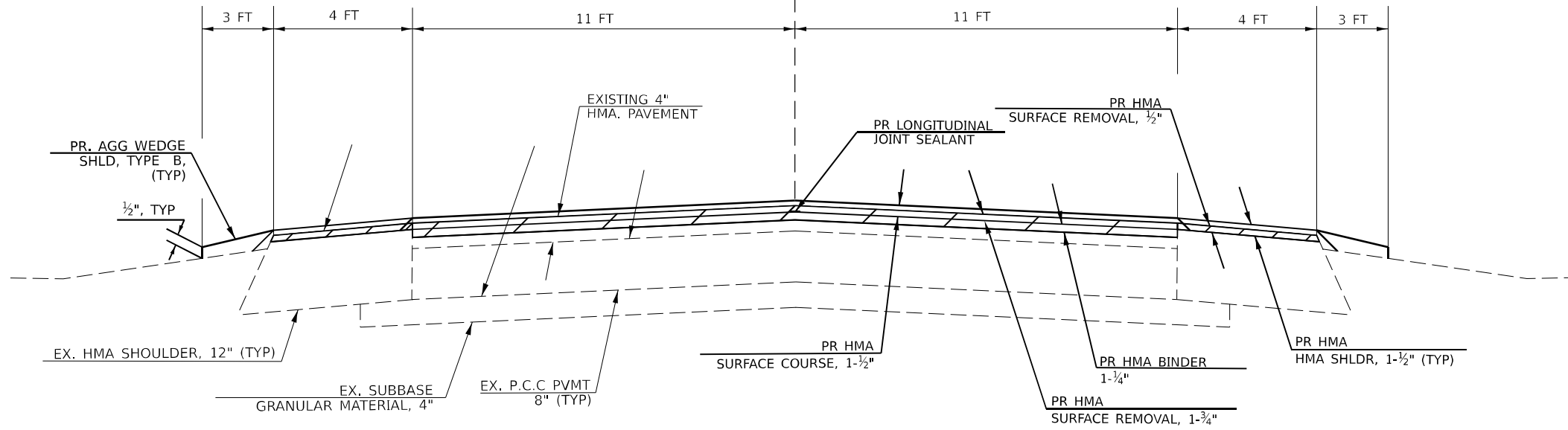
TYPICAL SECTIONS

SCALE: SHEET 3 OF 4 SHEETS STA. TO STA.

F.A.P. RTE.	SECTION	COUNTY	TOTAL SHEETS	SHEET NO.
331	(10.11.11-1)RS-2	GALLATIN	31	11
CONTRACT NO. 78A67				
ILLINOIS FED. AID PROJECT				

TYPICAL SECTION

N.T.S
 CL
 IL 13
 FAP 331

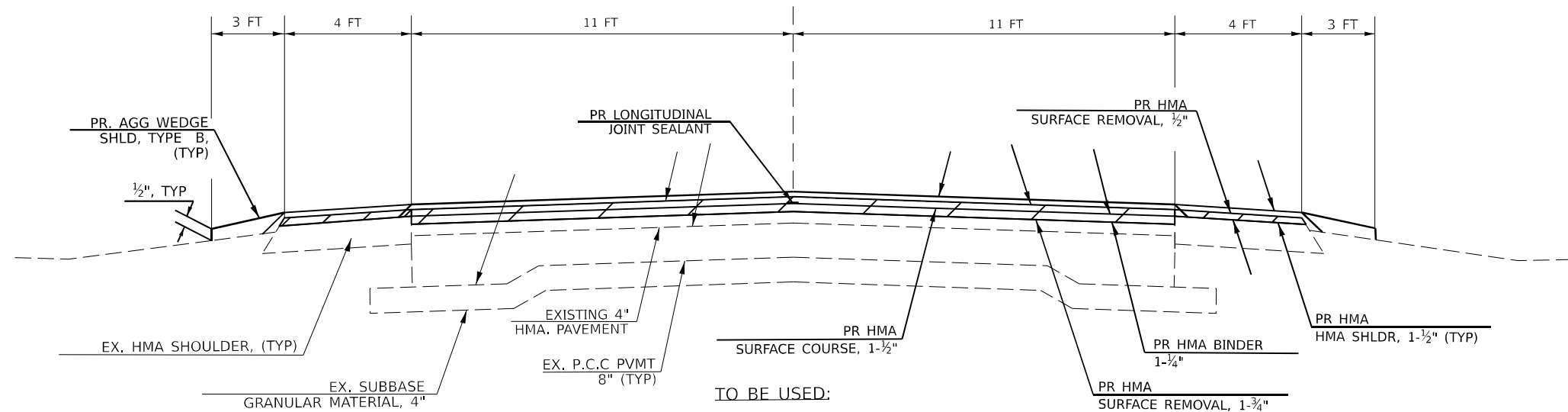


STATION EQUATIONS
 STA EQ 2173+91.00 BK = STA. 2174+00.00 AH
 STA EQ 2216+74.50 BK = STA. 0+00 AH
 STA EQ 85+67.50 BK = STA. K 0+01.78 AH

TO BE USED:
 STA 2174+00.00 TO STA 2209+54.00
 STA 2211+46.00 TO STA 2216+74.50BK
 STA 0+00AH TO STA 66+85.00
 STA 70+86.00 TO STA 80+75.50
 STA 82+06.50 TO STA K-1+51

OMISSIONS
 (GAP CONCRETE PMVT) STA 66+85.00 TO STA 70+86.00
 (GAP SN 030-0002) STA 80+75.50 TO STA 82+06.50

CL
 IL 13
 FAP 331



TO BE USED:
 STA 2209+54 TO STA 2209+85
 STA 2211+15 TO STA 2211+46
 STA K-1+51 TO STA K-3+57.75

OMISSIONS
 STA 2209+85 to 2211+15 (CONCRETE PAVEMENT SHOULDER-SN 030-0001)

MODEL: Typical.dwg (Sheet)
 FILE NAME: P:\Projects\2024\11\11-11-RS-2\11-11-RS-2.dwg
 PROJECT: 11-11-RS-2
 SHEET: 4 OF 4
 DATE: 8/15/2024

USER NAME = robert.handy	DESIGNED -	REVISED -
PLOT SCALE = 0.16666833' / in.	DRAWN -	REVISED -
PLOT DATE = 8/15/2024	CHECKED -	REVISED -
	DATE -	REVISED -

**STATE OF ILLINOIS
 DEPARTMENT OF TRANSPORTATION**

TYPICAL SECTIONS

SCALE: SHEET 4 OF 4 SHEETS STA. TO STA.

F.A.P. RTE.	SECTION	COUNTY	TOTAL SHEETS	SHEET NO.
331	(10.11.11-1)RS-2	GALLATIN	31	12
CONTRACT NO. 78A67				
ILLINOIS FED. AID PROJECT				

IL 13 RESURFACING SCHEDULE

LOCATION STATION TO STATION			LENGTH	ROADWAY WIDTH	TEMP RAMP	HMA SURF. REMOVAL, (1 3/4")	HMA SURF. REMOVAL, (2 3/4")	HMA BINDER COURSE (1 1/4")	HMA SURF. COURSE (1 1/2")	BIT. MAT. (TACK COAT)	MATERIAL TRANSFER DEVICE	LNG JOINT SEALANT	NOTE
IL 13			(FT)	(FT)	(SQ YD)	(SQ YD)	(SQ YD)	(TON)	(TON)	(POUNDS)	(TON)	(FT)	
1830+10.98	TO	1842+54	1,243	24	32	3,315		234	280	2,238	514	1,243	
*STA EQ 1842+53.65 BK = STA. 1849+41.36 AH													
1849+41.36	TO	1852+46	305	24		814		58	69	549	127	305	
1852+46	TO	1856+86	440	36		1,760		124	149	1,188	273	880	TRANSITION AVG WIDTH (24-48) TURN LANES
1856+86	TO	1859+98	312	30		1,040		74	88	702	182	624	TRANSITION AVG WIDTH (36-24) TURN LANES
1859+98	TO	1862+70	272	48		1,451		102	122	980	224	816	WALNUT INTERSECTION
1862+70	TO	1869+62	692	36		2,768		195	233	1,869	428	1,384	TRANSITION AVG WIDTH (48-24) TURN LANES
1869+62	TO	1942+26.58	7,265	24	32	19,374		1,363	1,632	13,077	2,995	7,265	
1942+26.58	TO	1944+53.42	GAP (SN 030-0016)										SN 030-0016 CONC BRIGE PVMT
1944+53.42	TO	1971+81.22	2,728	24	32	7,275		512	613	4911	1,125	2728	
1971+81.22	TO	1973+95.42	GAP (SN 030-0017)										SN 030-0017 CONC BRIGE PVMT
1973+95.42	TO	1982+53.72	858	24	32	2,288		161	193	1545	354	858	
*STA EQ 1982+53.72 BK = STA. 1982+36.24 AH													
1982+36.24	TO	2030+61.39	4,826	24		12,870		905	1,084	8,687	1,989	4,826	
*STA EQ 2030+61.39 BK = STA. 2037+82.80 AH													
2037+82.80	TO	2038+50.41	68	24		182		13	16	123	29	68	
2038+50.41	TO	2064+81.50	2,632	24		7,019		494	591	4,738	1,085	2,632	
STA EQ 2064+81.50 BK = STA. 2064+85.00 AH													
2064+85	TO	2103+11	3,826	24		10,203		718	860	6,887	1,578	3,826	
*STA EQ 2103+11.00 BK = STA. 2103+00.00 AH													
2103+00	TO	2123+18	2,018	24		5,382		379	454	3,633	833	2,018	
2123+18	TO	2160+53	3,735	24			9,960	698	839	6,723	1,537	3,735	OLD SHAWNEETOWN CURB AND GUTTER (INLAY)
2160+53	TO	2173+91	1,338	24		3,568		251	301	2,409	552	1,338	
*STA EQ 2173+91.00 BK = STA. 2174+00.00 AH													
2174+00	TO	2209+54	3,554	22		8,688		612	732	5,865	1,344	3,554	
2209+54	TO	2209+85	31	22	30	76		6	7	52	13	31	
2209+85	TO	2211+15	GAP (CONCRETE PVMT- SN 030-0001)										
2211+15	TO	2211+46	31	22	30	76		6	7	52	13	31	
2211+46	TO	2216+74.50	529	22		1,294		91	109	873	200	529	
STA EQ 2216+74.50 BK = STA. 0+00 AH													
0+00.00	TO	66+85	6,685	22	30	16,342		1,150	1,377	11,031	2,527	6,685	
66+85	TO	70+86	GAP (CONCRETE PAVEMENT-OLD SHAWNEETOWN RD INTERSECTION)										
70+86	TO	80+75.50	990	22	30	2,420		171	204	1,634	375	990	
80+75.50	TO	82+06.50	GAP (CONCRETE PVMT-SN 030-0023)										
82+06.50	TO	85+67.50	361	22	30	883		63	75	596	138	361	
STA EQ 85+67.50 BK = STA. K 0+01.78 AH													
K 0+1.78	TO	K 1+51.00	150	22		367		26	31	248	57	150	
K 1+51.00	TO	K 3+57.75	207	22	30	506		36	43	342	79	207	
IL 13 TOTAL					308	109,961	9,960	8,442	10,109	80,952	18,551	47,084	

MODEL: Resurfacing Schedule (Sheet)
 FILE NAME: P:\GIS\Projects\DOT\DOT Documents\DOT Office\Direct\0300 Project\78A67\CAD\Drawings\DOT\78A67-SHE-Schedule.dwg

USER NAME = robert.handy	DESIGNED -	REVISED -
PLOT SCALE = 0.16666833 / in.	DRAWN -	REVISED -
PLOT DATE = 8/15/2024	CHECKED -	REVISED -
	DATE -	REVISED -

**STATE OF ILLINOIS
DEPARTMENT OF TRANSPORTATION**

RESURFACING SCHEDULE

SCALE: SHEET OF SHEETS STA. TO STA.

F.A.P RTE.	SECTION	COUNTY	TOTAL SHEETS	SHEET NO.
331	(10.11.11-1)RS-2	GALLATIN	31	13
CONTRACT NO. 78A67				
ILLINOIS FED. AID PROJECT				

IL 13 SHOULDER SCHEDULE

LOCATION STATION TO STATION			LENGTH	HMA SHLDR WIDTH		AGG SHLDR WIDTH		TEMP RAMP	HMA SURF REMOVAL, (1/2")	HMA SURF REMOVAL, (1 1/2")	HMA SHLDR (1.5")	BIT. MAT (TACK COAT)	AGG SHLDR WEDGE, TYPE B	NOTE	
				LT	RT	LT	RT								
IL 13			(FT)	(FT)	(FT)	(FT)	(FT)	(SQYD)	(SQYD)	(SQYD)	(TON)	(LBS)	(TON)		
1830+10.98	TO	1842+53.65	1,243	4	4	3	3	5	1,105		93	497	59		
'STA EQ 1842+53.65 BK = STA. 1849+41.36 AH															
1849+41.36	TO	1852+46	305	4	4	3	3		272		23	122			
1852+46	TO	1856+86	440	4	4	3	3		392		33	176	21		
1856+86	TO	1859+98	312	4	4	3	3		278		24	125	15		
1859+98		1862+70	272	4	4	3	3		242		21	109	13		
1862+70	TO	1869+62	692	4	4	3	3		616		52	277	33		
1869+62	TO	1942+26.58	7,265	4	4	3	3	5	6,458		543	2,906	345		
1942+26.58	TO	1944+53.42	227	GAP (SN 030-0016)											SN 030-0016 CONC BRIGE PVMT
1944+53.42	TO	1971+81.22	2,728	4	4	3	3	5	2,425		204	1,091	130		
1971+81.22	TO	1973+95.42	215	GAP (SN 030-0017)											SN 030-0017 CONC BRIGE PVMT
1973+95.92	TO	1982+53.72	858	4	4	3	3	5	763		65	343	41		
'STA EQ 1982+53.72 BK = STA. 1982+36.24 AH															
1982+36.24	TO	2030+61.39	4,826	4	4	3	3		4,290		361	1,930	230		
'STA EQ 2030+61.39 BK = STA. 2037+82.80 AH															
2037+82.80	TO	2038+50.41	68	4	4	3	3		61		6	27	4		
2038+50.41	TO	2064+81.50	2,632	4	4	3	3		2,340		197	1,053	125		
STA EQ 2064+81.50 BK = STA. 2064+85.00 AH															
2064+85	TO	2103+11	3,826	4	4	3	3		3,401		286	1,530	182		
'STA EQ 2103+11.00 BK = STA. 2103+00.00 AH															
2103+00	TO	2123+18	2,018	4	4	3	3		1,794		151	807	96		
2123+18	TO	2160+53	3,735		4		3			1,660	140			OLD SHAWNEETOWN CURB AND GUTTER (LEFT SIDE) (INLAY)	
2160+53	TO	2173+91	1,338	4	4	3	3		1,190		100	535	64		
'STA EQ 2173+91.00 BK = STA. 2174+00.00 AH															
2174+00	TO	2209+54	3,554	4	4	3	3		3,160		266	1,422	169		
2209+54	TO	2209+85	31	4	4	3	3	5	28		3	12	2		
2209+85	TO	2211+15	GAP (CONCRETE PAVEMENT SHOULDER-SN 030-0001)												
2211+15	TO	2211+46	31	4	4	3	3	5	28		3	12	2		
2211+46	TO	2216+74.50	529	4	4	3	3		471		40	212	26		
STA EQ 2216+74.50 BK = STA. 0+00 AH															
+00	TO	66+85	6,685	4	4	3	3	5	5,943		500	2,674	318		
66+85	TO	70+86	GAP (CONCRETE PAVEMENT-OLD SHAWNEETOWN RD INTERSECTION)												
70+86	TO	80+05	919	4	4	3	3	5	817		69	368	44		
80+05	TO	82+77	GAP (CONCRETE PAVEMENT SHOULDER-SN 030-0023)												
82+77	TO	85+67.50	291	4	4	3	3	5	259		22	116	14		
STA EQ 85+67.50 BK = STA. K 0+01.78 AH															
K 0+1.78	TO	K 1+51.00	150	4	4	3	3		134		12	60	8		
K 1+51.00	TO	K 3+57.75	207	4	4	3	2	5	184		16	83	9		
IL 13 TOTAL								50	36,651	1,660	3,230	16,488	1,950		

MODEL: Shoulder Schedule (Sheet)
 FILE NAME: P:\GIS\Projects\DOT\Documents\DOT Office\District 9\ORD Project\9847\CAD\Drawings\DOT\9847-SHS-Schedule.dgn

USER NAME = robert.handy	DESIGNED -	REVISED -
PLOT SCALE = 0.16666633 / in.	DRAWN -	REVISED -
PLOT DATE = 8/15/2024	CHECKED -	REVISED -
	DATE -	REVISED -

**STATE OF ILLINOIS
DEPARTMENT OF TRANSPORTATION**

SHOULDER SCHEDULE

SCALE: SHEET OF SHEETS STA. TO STA.

F.A.P. RTE.	SECTION	COUNTY	TOTAL SHEETS	SHEET NO.
331	(10.11.11-1)RS-2	GALLATIN	31	14
CONTRACT NO. 78A67				
ILLINOIS FED. AID PROJECT				

ENTRANCE SCHEDULE

LOCATION FAS 331 (IL 13)	ENT TYPE	EX. SURF	EOP	FOR INFO PURPOSES ONLY			INCIDENTAL HMA SURF (1 1/2")	AGG WEDGE SHLDR, TYPE B	BIT. MAT. (TACK COAT)	HMA SURF REMOVAL, (1/2")
				WIDTH 4' O/S	RDWY AREA					
				TYPE	FT	FT				
ENTRANCES										
1910+15	RT	PE	HMA	40	25	15	2		7	15
1930+25	RT	PE	HMA	85	45	29	4		14	29
1930+25	LT	PE	HMA	40	25	15	2		7	15
1934+45	LT	PE	AGG	50	50	23		3		
1934+90	RT	PE	AGG	40	40	18		2		
1983+78	LT	PE	AGG	50	20	16		2		
2044+77	LT	PE	HMA	50	35	19	3		9	19
2046+25	RT	PE	HMA	35	20	13	2		6	13
2096+64	LT	PE	HMA	70	15	19	3		9	19
2118+50	RT	PE	AGG	35	35	16		2		
2159+10	RT	PE	HMA	60	50	25	3		12	25
2169+70	RT	PE	HMA	50	35	19	3		9	19
2169+70	LT	PE	HMA	45	20	15	2		7	15
2194+40	LT	PE	HMA	55	50	24	3		11	24
2196+10	LT	PE	HMA	60	55	26	3		12	26
2201+85	LT	PE	AGG	60	50	25		3		
2213+15	LT	PE	AGG	25	25	12		2		
2213+15	RT	PE	AGG	25	25	12		2		
7+10	RT	PE	AGG	40	40	18		2		
24+85	RT	PE	AGG	30	30	14		2		
IL 13 TOTAL							30	20	103	219

SIDE ROAD SCHEDULE

LOCATION	EXIST. SURFACE	EOP WIDTH	FOR INFO PURPOSE ONLY			TEMP RAMP	HMA SURFACE REMOVAL -BUTT JOINT	INCIDENTAL HMA SURFACING (3")	BIT. MAT. (TACK COAT)	
			WIDTH AT 15' OFFSET	ROADWAY AREA						
			SURF	(FT)	(FT)					(SQ YD)
IL 13										
LT.	1859+98	WALNUT LANE	HMA	200	155	296	89	296	50	134
RT.	1859+98	WALNUT LANE	HMA	90	60	125	40	125	21	57
LT.	1884+06	SOUTHWIND RD	HMA	75	50	105	34	105	18	47
RT.	1884+06	SOUTHWIND RD	HMA	90	50	117	40	117	20	53
LT.	1930+25	WATER WELL LN	HMA	85	45	109	38	109	19	49
RT.	1930+25	WATER WELL LN	HMA	40	25	55	18	55	10	25
RT.	1984+09	TEXACO LANE	HMA	80	55	113	36	113	19	51
RT.	1983+78	JUNCTION RD	HMA	130	80	175	58	175	30	79
RT.	2003+88	NEW MARKET RD	HMA	100	60	134	45	134	23	60
LT.	2003+88	NEW MARKET RD	HMA	85	60	121	38	121	21	55
RT.	2069+49	DUNCAN LN	HMA	75	52	106	34	106	18	48
LT.	2069+49	DUNCAN LN	HMA	115	50	138	52	138	24	62
RT.	2201+85	HEAD LN	HMA	90	55	121	40	121	21	55
LT.	10+98	OLD SHAWNEETOWN RD	HMA	80	40	100	36	100	17	45
RT.	69+55	OLD SHAWNEETOWN RD	HMA	225	115	284	100	284	48	128
LT.	69+55	OLD SHAWNEETOWN RD	HMA	80	60	117	36	117	20	53
IL 13 SIDE ROAD TOTALS							734	2,216	379	1,001

MODEL: EntranceSchedule.dwg (Sheet)
 FILE NAME: P:\DOT\Documents\DOT Office\District 9\ORD Project\78A67\CADData\CADbases\DOT78A67-SHE-Schedule.dwg

USER NAME = robert.handy	DESIGNED -	REVISED -
	DRAWN -	REVISED -
PLOT SCALE = 0.16666633' / in.	CHECKED -	REVISED -
PLOT DATE = 8/15/2024	DATE -	REVISED -

STATE OF ILLINOIS
DEPARTMENT OF TRANSPORTATION

ENTRANCE SCHEDULE		SIDEROAD SCHEDULE	
SCALE:	SHEET	OF SHEETS	STA. TO STA.

F.A.P. RTE.	SECTION	COUNTY	TOTAL SHEETS	SHEET NO.
331	(10.11.11-1)RS-2	GALLATIN	31	15
CONTRACT NO. 78A67				
ILLINOIS FED. AID PROJECT				

EASTBOUND PAVEMENT PATCHING

DISTANCE FROM BEGIN OF PROJECT (MILES)	L	W	AREA	CLASS C PATCHES, TYPE II, 12 INCH (SQ YD)
	FT	FT	SQ YD	
0.2	6	12	8.0	8.0
0.2	6	12	8.0	8.0
0.3	6	12	8.0	8.0
0.3	6	12	8.0	8.0
0.3	6	12	8.0	8.0
0.3	6	12	8.0	8.0
0.3	6	12	8.0	8.0
0.4	6	12	8.0	8.0
0.4	6	12	8.0	8.0
0.4	6	12	8.0	8.0
0.4	6	12	8.0	8.0
0.4	6	12	8.0	8.0
0.4	6	12	8.0	8.0
0.5	6	12	8.0	8.0
0.6	6	12	8.0	8.0
0.6	6	12	8.0	8.0
0.6	6	12	8.0	8.0
0.6	6	12	8.0	8.0
0.7	6	12	8.0	8.0
0.7	6	12	8.0	8.0
0.7	6	12	8.0	8.0
0.9	6	12	8.0	8.0
1	6	12	8.0	8.0
1	6	12	8.0	8.0
1	6	12	8.0	8.0
1	6	12	8.0	8.0
1.1	6	12	8.0	8.0
1.1	6	12	8.0	8.0
1.1	8	12	10.7	10.7
1.4	8	12	10.7	10.7
1.4	6	12	8.0	8.0
1.4	6	12	8.0	8.0
1.4	6	12	8.0	8.0
1.4	6	12	8.0	8.0
1.5	8	12	10.7	10.7
1.6	6	12	8.0	8.0
1.6	6	12	8.0	8.0
1.6	6	12	8.0	8.0
1.7	6	12	8.0	8.0
1.7	8	12	10.7	10.7
1.7	8	12	10.7	10.7
1.7	6	12	8.0	8.0
1.8	6	12	8.0	8.0
1.8	6	12	8.0	8.0
EASTBOUND SUBTOTAL 1				358

EASTBOUND PAVEMENT PATCHING CONT

DISTANCE FROM BEGIN OF PROJECT (MILES)	L	W	AREA	CLASS C PATCHES, TYPE II, 12 INCH (SQ YD)
	FT	FT	SQ YD	
1.8	6	12	8.0	8.0
1.9	6	12	8.0	8.0
1.9	6	12	8.0	8.0
1.9	6	12	8.0	8.0
1.9	6	12	8.0	8.0
1.9	8	12	10.7	10.7
2	6	12	8.0	8.0
2	6	12	8.0	8.0
2	6	12	8.0	8.0
2.1	9	12	12.0	12.0
2.1	6	12	8.0	8.0
2.1	6	12	8.0	8.0
2.2	6	12	8.0	8.0
2.2	6	12	8.0	8.0
2.2	6	12	8.0	8.0
2.2	6	12	8.0	8.0
2.2	6	12	8.0	8.0
2.3	6	12	8.0	8.0
2.3	8	12	10.7	10.7
2.3	6	12	8.0	8.0
2.3	6	12	8.0	8.0
2.3	6	12	8.0	8.0
2.4	6	12	8.0	8.0
2.4	6	12	8.0	8.0
2.4	6	12	8.0	8.0
2.4	6	12	8.0	8.0
2.4	6	12	8.0	8.0
2.4	6	12	8.0	8.0
2.5	6	12	8.0	8.0
2.5	6	12	8.0	8.0
2.5	6	12	8.0	8.0
2.6	10	12	13.3	13.3
2.6	6	12	8.0	8.0
2.6	6	12	8.0	8.0
2.6	6	12	8.0	8.0
2.6	6	12	8.0	8.0
2.6	6	12	8.0	8.0
2.6	6	12	8.0	8.0
2.6	6	12	8.0	8.0
2.6	6	12	8.0	8.0
2.6	6	12	8.0	8.0
2.7	6	12	8.0	8.0
2.7	8	12	10.7	10.7
2.7	6	12	8.0	8.0
2.7	6	12	8.0	8.0
2.8	6	12	8.0	8.0
2.8	6	12	8.0	8.0
2.8	6	12	8.0	8.0
2.8	6	12	8.0	8.0
2.8	6	12	8.0	8.0
EASTBOUND SUBTOTAL 2				362

EASTBOUND PAVEMENT PATCHING CONT

DISTANCE FROM BEGIN OF PROJECT (MILES)	L	W	AREA	CLASS C PATCHES, TYPE II, 12 INCH (SQ YD)
	FT	FT	SQ YD	
2.8	6	12	8.0	8.0
2.8	6	12	8.0	8.0
2.8	6	12	8.0	8.0
2.8	6	12	8.0	8.0
3	6	12	8.0	8.0
3	6	12	8.0	8.0
3	6	12	8.0	8.0
3.1	8	12	10.7	10.7
3.1	8	12	10.7	10.7
3.1	6	12	8.0	8.0
3.1	6	12	8.0	8.0
3.2	6	12	8.0	8.0
3.2	6	12	8.0	8.0
3.2	6	12	8.0	8.0
3.2	6	12	8.0	8.0
3.2	6	12	8.0	8.0
3.2	6	12	8.0	8.0
3.2	6	12	8.0	8.0
3.2	6	12	8.0	8.0
3.2	6	12	8.0	8.0
3.2	6	12	8.0	8.0
3.2	6	12	8.0	8.0
3.3	6	12	8.0	8.0
3.3	8	12	10.7	10.7
3.3	6	12	8.0	8.0
3.3	6	12	8.0	8.0
3.4	6	12	8.0	8.0
3.4	6	12	8.0	8.0
3.4	6	12	8.0	8.0
3.5	6	12	8.0	8.0
3.5	8	12	10.7	10.7
3.7	6	12	8.0	8.0
4.2	6	12	8.0	8.0
4.4	6	12	8.0	8.0
4.6	6	12	8.0	8.0
4.6	6	12	8.0	8.0
4.6	6	12	8.0	8.0
4.7	6	12	8.0	8.0
5	6	12	8.0	8.0
5.1	6	12	8.0	8.0
EASTBOUND SUBTOTAL 3				291

MODEL: Eastbound Pavement Patching (Sheet)
FILE NAME: P:\GIS\Projects\DOT\Office\DOT\Projects\78A67\78A67_Sheets\Schedule.dgn

USER NAME = robert.handy	DESIGNED -	REVISED -
PLOT SCALE = 0.16666833 / in.	DRAWN -	REVISED -
PLOT DATE = 8/15/2024	CHECKED -	REVISED -
	DATE -	REVISED -

**STATE OF ILLINOIS
DEPARTMENT OF TRANSPORTATION**

EASTBOUND PAVEMENT PATCHING SCHEDULE			
SCALE:	SHEET	OF	SHEETS
			STA.
			TO STA.

F.A.P. RTE.	SECTION	COUNTY	TOTAL SHEETS	SHEET NO.
331	(10.11.11-1)RS-2	GALLATIN	31	16
CONTRACT NO. 78A67				
ILLINOIS FED. AID PROJECT				

EASTBOUND PAVEMENT PATCHING

DISTANCE FROM BEGIN OF PROJECT (MILES)	L	W	AREA	CLASS C PATCHES, TYPE II, 19 INCH (SQ YD)	CLASS C PATCHES, TYPE III, 19 INCH (SQ YD)	CLASS C PATCHES, TYPE IV, 19 INCH (SQ YD)
	FT	FT	SQ YD			
5.3	6	12	8.0	8.0		
5.5	6	12	8.0	8.0		
5.6	6	12	8.0	8.0		
5.6	6	12	8.0	8.0		
5.7	6	12	8.0	8.0		
5.8	12	12	16.0		16.0	
6.2	28	12	37.3			37.3
6.2	6	12	8.0	8.0		
6.3	10	12	13.3	13.3		
6.3	6	12	8.0	8.0		
6.4	6	12	8.0	8.0		
6.4	6	12	8.0	8.0		
6.4	6	12	8.0	8.0		
6.4	6	12	8.0	8.0		
6.6	6	12	8.0	8.0		
6.6	6	12	8.0	8.0		
6.7	6	12	8.0	8.0		
6.7	6	12	8.0	8.0		
6.7	6	12	8.0	8.0		
6.8	6	12	8.0	8.0		
6.8	8	12	10.7	10.7		
6.8	6	12	8.0	8.0		
6.8	10	12	13.3	13.3		
6.9	10	12	13.3	13.3		
6.9	6	12	8.0	8.0		
7	6	12	8.0	8.0		
7	6	12	8.0	8.0		
7	6	12	8.0	8.0		
7	10	12	13.3	13.3		
7	8	12	10.7	10.7		
7	6	12	8.0	8.0		
7.1	6	12	8.0	8.0		
7.1	6	12	8.0	8.0		
7.1	6	12	8.0	8.0		
7.1	6	12	8.0	8.0		
7.1	6	12	8.0	8.0		
7.2	6	12	8.0	8.0		
7.2	6	12	8.0	8.0		
7.2	6	12	8.0	8.0		
7.2	6	12	8.0	8.0		
7.2	6	12	8.0	8.0		
7.2	6	12	8.0	8.0		
7.3	6	12	8.0	8.0		
7.3	6	12	8.0	8.0		
7.3	10	12	13.3	13.3		
EASTBOUND SUBTOTAL 1				360	16	38

EASTBOUND PAVEMENT PATCHING CONT

DISTANCE FROM BEGIN OF PROJECT (MILES)	L	W	AREA	CLASS C PATCHES, TYPE II, 19 INCH (SQ YD)	CLASS C PATCHES, TYPE III, 19 INCH (SQ YD)	CLASS C PATCHES, TYPE IV, 19 INCH (SQ YD)
	FT	FT	SQ YD			
7.3	6	12	8.0	8.0		
7.4	6	12	8.0	8.0		
7.4	6	12	8.0	8.0		
7.4	6	12	8.0	8.0		
7.5	6	12	8.0	8.0		
7.5	6	12	8.0	8.0		
7.5	6	12	8.0	8.0		
7.5	6	12	8.0	8.0		
7.5	6	12	8.0	8.0		
7.5	6	12	8.0	8.0		
7.5	6	12	8.0	8.0		
7.5	6	12	8.0	8.0		
7.5	6	12	8.0	8.0		
7.6	6	12	8.0	8.0		
7.6	6	12	8.0	8.0		
7.6	8	12	10.7	10.7		
7.6	8	12	10.7	10.7		
7.6	6	12	8.0	8.0		
7.7	6	12	8.0	8.0		
7.7	6	12	8.0	8.0		
7.7	6	12	8.0	8.0		
7.8	6	12	8.0	8.0		
7.8	8	12	10.7	10.7		
7.9	8	12	10.7	10.7		
7.9	6	12	8.0	8.0		
8	6	12	8.0	8.0		
8	6	12	8.0	8.0		
8.1	6	12	8.0	8.0		
8.1	6	12	8.0	8.0		
8.2	6	12	8.0	8.0		
8.2	6	12	8.0	8.0		
8.3	10	12	13.3	13.3		
8.3	50	6	33.3			33.3
8.3	12	12	16.0		16.0	
8.3	25	6	16.7		16.7	
8.3	10	12	13.3	13.3		
8.4	6	12	8.0	8.0		
8.4	6	12	8.0	8.0		
8.5	6	12	8.0	8.0		
8.6	6	12	8.0	8.0		
8.6	6	12	8.0	8.0		
8.6	6	12	8.0	8.0		
8.7	6	12	8.0	8.0		
8.7	6	12	8.0	8.0		
EASTBOUND SUBTOTAL 2				318	33	34

MODEL: Eastbound 19inch Patching (Sheet)
 FILE NAME: P:\GIS\Projects\DOT\Documents\DOT\Office\District 9\ORD Project\78A67\CAD\Drawings\DOT\78A67-SHE-Schedule.dgn

USER NAME = robert.handy	DESIGNED -	REVISED -
PLOT SCALE = 0.16666833 / in.	DRAWN -	REVISED -
PLOT DATE = 8/15/2024	CHECKED -	REVISED -
	DATE -	REVISED -

**STATE OF ILLINOIS
DEPARTMENT OF TRANSPORTATION**

EASTBOUND PAVEMENT PATCHING SCHEDULE

SCALE: SHEET 16 OF 29 SHEETS STA. TO STA.

F.A.P. RTE.	SECTION	COUNTY	TOTAL SHEETS	SHEET NO.
331	(10.11.11-1)RS-2	GALLATIN	31	17
CONTRACT NO. 78A67				
ILLINOIS FED. AID PROJECT				

WESTBOUND PAVEMENT PATCHING

DISTANCE FROM BEGIN OF PROJECT (MILES)	L	W	AREA	CLASS C PATCHES, TYPE II, 12 INCH (SQ YD)
	FT	FT	SQ YD	
0.2	6	12	8.0	8.0
0.3	6	12	8.0	8.0
0.3	6	12	8.0	8.0
0.4	6	12	8.0	8.0
0.4	6	12	8.0	8.0
0.5	6	12	8.0	8.0
0.5	6	12	8.0	8.0
0.5	6	12	8.0	8.0
0.6	6	12	8.0	8.0
0.6	6	12	8.0	8.0
0.6	6	12	8.0	8.0
0.7	6	12	8.0	8.0
0.7	6	12	8.0	8.0
0.9	6	12	8.0	8.0
1.1	8	12	10.7	10.7
1.3	6	12	8.0	8.0
1.3	6	12	8.0	8.0
1.3	6	12	8.0	8.0
1.4	8	12	10.7	10.7
1.4	6	12	8.0	8.0
1.4	6	12	8.0	8.0
1.7	6	12	8.0	8.0
1.7	8	12	10.7	10.7
1.7	6	12	8.0	8.0
1.8	6	12	8.0	8.0
1.8	6	12	8.0	8.0
1.8	6	12	8.0	8.0
1.9	6	12	8.0	8.0
1.9	6	12	8.0	8.0
1.9	6	12	8.0	8.0
1.9	6	12	8.0	8.0
1.9	6	12	8.0	8.0
2	6	12	8.0	8.0
2	6	12	8.0	8.0
2	6	12	8.0	8.0
2.2	6	12	8.0	8.0
2.2	6	12	8.0	8.0
2.3	6	12	8.0	8.0
2.4	6	12	8.0	8.0
2.5	6	12	8.0	8.0
2.5	6	12	8.0	8.0
2.6	6	12	8.0	8.0
WESTBOUND SUBTOTAL 1				353

WESTBOUND PAVEMENT PATCHING CONT

DISTANCE FROM BEGIN OF PROJECT (MILES)	L	W	AREA	CLASS C PATCHES, TYPE I, 12 INCH (SQ YD)	CLASS C PATCHES, TYPE II, 12 INCH (SQ YD)
	FT	FT	SQ YD		
2.7	8	12	10.7		10.7
2.7	8	12	10.7		10.7
2.7	6	12	8.0		8.0
2.8	6	12	8.0		8.0
2.8	6	12	8.0		8.0
2.8	6	12	8.0		8.0
2.8	6	12	8.0		8.0
2.8	6	12	8.0		8.0
3	6	12	8.0		8.0
3	6	12	8.0		8.0
3.1	8	2	1.8	1.8	
3.1	6	12	8.0		8.0
3.1	6	12	8.0		8.0
3.1	6	12	8.0		8.0
3.2	6	12	8.0		8.0
3.2	6	12	8.0		8.0
3.2	6	12	8.0		8.0
3.2	6	12	8.0		8.0
3.3	6	12	8.0		8.0
3.3	6	12	8.0		8.0
3.3	6	12	8.0		8.0
3.4	6	12	8.0		8.0
3.5	6	12	8.0		8.0
3.5	8	12	10.7		10.7
WESTBOUND SUBTOTAL 2				2	201

WESTBOUND PAVEMENT PATCHING

DISTANCE FROM BEGIN OF PROJECT (MILES)	L	W	AREA	CLASS C PATCHES, TYPE II, 19 INCH (SQ YD)
	FT	FT	SQ YD	
6.2	6	12	8.0	8.0
6.4	6	12	8.0	8.0
6.5	6	12	8.0	8.0
6.5	6	12	8.0	8.0
6.6	6	12	8.0	8.0
6.8	6	12	8.0	8.0
6.9	6	12	8.0	8.0
7	6	12	8.0	8.0
7	6	12	8.0	8.0
7.1	6	12	8.0	8.0
7.2	6	12	8.0	8.0
7.3	6	12	8.0	8.0
7.5	6	12	8.0	8.0
7.6	6	12	8.0	8.0
7.6	8	12	10.7	10.7
7.7	6	12	8.0	8.0
7.7	6	12	8.0	8.0
7.8	6	12	8.0	8.0
8	6	12	8.0	8.0
8.4	6	12	8.0	8.0
8.5	6	12	8.0	8.0
8.6	6	12	8.0	8.0
8.6	6	12	8.0	8.0
8.7	6	12	8.0	8.0
WESTBOUND SUBTOTAL				195

12 INCH PAVEMENT PATCHING TOTALS

LANE DIRECTION	CLASS C PATCHES, TYPE I, 12 IN (SQ YD)	CLASS C PATCHES, TYPE II, 12 IN (SQ YD)
EASTBOUND		
EASTBOUND SUBTOTAL 1		358
EASTBOUND SUBTOTAL 2		362
EASTBOUND SUBTOTAL 3		291
WESTBOUND		
WESTBOUND SUBTOTAL 1		353
WESTBOUND SUBTOTAL 2	2	201
IL 13 (FAP 331) TOTALS		1,565

19 INCH PAVEMENT PATCHING TOTALS

LANE DIRECTION	CLASS C PATCHES, TYPE II, 19 INCH (SQ YD)	CLASS C PATCHES, TYPE III, 19 INCH (SQ YD)	CLASS C PATCHES, TYPE IV, 19 INCH (SQ YD)
EASTBOUND			
EASTBOUND SUBTOTAL 1	360	16	38
EASTBOUND SUBTOTAL 2	318	33	34
WESTBOUND			
WESTBOUND SUBTOTAL	195		
IL 13 (FAP 331) TOTALS		49	72

**STATE OF ILLINOIS
DEPARTMENT OF TRANSPORTATION**

WESTBOUND PAVEMENT PATCHING SCHEDULE
PAVEMENT PATCHING SCHEDULE TOTALS

F.A.P. RTE.	SECTION	COUNTY	TOTAL SHEETS	SHEET NO.
331	(10.11.11-1)RS-2	GALLATIN	31	18
CONTRACT NO. 78A67				
ILLINOIS FED. AID PROJECT				

SCALE: SHEET 17 OF 29 SHEETS STA. TO STA.

MODEL: Westbound Patch and Summary (Rev.4)
FILE NAME: P:\GIS\Projects\DOT\Office\DOT\Projects\78A67\CAD\Drawings\DOT\78A67-SHE-Schedule.dgn

USER NAME = robert.handy	DESIGNED -	REVISED -
PLOT SCALE = 0.16666833' / in.	DRAWN -	REVISED -
PLOT DATE = 8/15/2024	CHECKED -	REVISED -
	DATE -	REVISED -

GUARDRAIL SCHEDULE

LOCATION STATION TO STATION	QUAD	GUARDRAIL REMOVAL	BRIDGE RAIL REMOVAL	SPBGR T-A, 6 FOOT POSTS	LONG SPAN GUARDRAIL OVER CULVERT 12.5 FT SPAN	STEEL RAILING, TYPE CO-10	TRAFFIC BARRIER TERMINAL			GUARDRAIL REFLECTOR T-A	TERMINAL MARKER DIRECT APPLIED	CONC SUPER STR	REINF BARS, EPOXY COATED	NOTES	
							TYPE 6B	TYPE 14	TYPE 1 SPL TANGENT 31 7/8"						
		FT	FT	FT	FT	FT	EACH	EACH	EACH	EACH	EACH	CU YD	POUND		
GALLATIN															
SN 030-0016															
STA 1935+95 TO STA 1950+10															
WINGWALLS & PARAPET MODIFICATIONS TO ALL FOUR QUADRANTS															
1935+95	TO	1942+27	NW	632	18	562.5			1	1	8	1	0.9	190	REPLACE GUARDRAIL TO STANDARD, REPLACE DAMAGE END SECTION
1944+53	TO	1950+10	NE	557	18	487.5			1	1	8	1	0.9	190	REPLACE GUARDRAIL AND BARRIER TO STANDARD,
1944+53	TO	1949+10	SE	457	18	387.5			1	1	6	1	0.9	190	REPLACE GUARDRAIL AND BARRIER TO STANDARD,
1939+50	TO	1942+27	SW	277	18	212.5			1	1	4	1	0.9	190	REPLACE GUARDRAIL TO STANDARD, REPLACE DAMAGE END SECTION
SN 030-0017															
STA 1964+64 TO STA 1983+46															
WINGWALLS & PARAPET MODIFICATIONS TO ALL FOUR QUADRANTS															
1973+96	TO	1983+46	NE	950	18	875			1	1	12	1	0.9	190	REPLACE GUARDRAIL AND BARRIER ENDS TO STANDARD,
1964+64	TO	1971+82	NW	695	18	662.5			1	1	10	1	0.9	190	REPLACE GUARDRAIL AND BARRIER AT BRIDGE TO STANDARD,
1965+05	TO	1971+82	SW	675	18	600			1	1	10	1	0.9	190	REPLACE GUARDRAIL TO STANDARD, REPLACE DAMAGE END SECTION
1973+96	TO	1983+25	SE	930	18	862.5			1	1	12	1	0.9	190	REPLACE GUARDRAIL AND BARRIER ENDS TO STANDARD,
SN 030-7005															
STA 2098+90 TO STA 2102+60															
2100+10	TO	2102+60	NORTH	250		162.5	37.5			1	4	1			REPLACE GUARDRAIL AND BARRIER ENDS TO STANDARD,
2098+90	TO	2101+20	SOUTH	230		150	37.5			1	4	1			REPLACE GUARDRAIL AND BARRIER ENDS TO STANDARD,
SN 030-0001															
STA 2208+65 TO STA 2213+05															
2208+60	TO	2212+90	NORTH	300		150		124.5	2	2	4	2			
2208+95	TO	2213+05	SOUTH	275		125		124.5	2	2	4	2			
GALLATIN COUNTY TOTAL				6,228	144	5,238	75	249	8	4	14	86	14	7.2	1,520

EASTBOUND NEAR OLD SHAWNEETOWN ROAD PATCHING PAVEMENT SCHEDULE

INFORMATION ONLY			CLASS B PATCHES, TYPE IV, 20 INCH	TIE BARS 3/4"	DOWEL BARS 1 1/2"	SAW CUTS	WELDED WIRE REINFORCEMENT
LOCATION	WIDTH	LENGTH					
			SQYD	EACH	EACH	FOOT	SQYD
STA 66+85 TO STA 68+85	12	200	267	36	340	848	267
TOTAL			267	36	340	848	267

MODEL: Guardrail Schedule (Sheet)
 FILE NAME: P:\GIS\Projects\DOT\Documents\DOT\Office\Direct\GORD\Projects\78A67\CAD\DrawCAD\Drawings\DOT\78A67-SHE-Schedule.dwg

USER NAME = robert.handy	DESIGNED -	REVISED -
PLOT SCALE = 0.16666833' / in.	DRAWN -	REVISED -
PLOT DATE = 8/15/2024	CHECKED -	REVISED -
	DATE -	REVISED -

**STATE OF ILLINOIS
DEPARTMENT OF TRANSPORTATION**

GUARDRAIL SCHEDULE
PAVEMENT PATCHING NEAR SHAWNEETOWN RD SCHEDULE

SCALE: SHEET 18 OF 29 SHEETS STA. TO STA.

F.A.P RTE.	SECTION	COUNTY	TOTAL SHEETS	SHEET NO.
331	(10.11.11-1)RS-2	GALLATIN	31	19
CONTRACT NO. 78A67				
ILLINOIS FED. AID PROJECT				

IL 13 PAVEMENT MARKING SCHEDULE

LOCATION STATION TO STATION			LENGTH (INFO. ONLY)	THERMOPLASTIC PAVEMENT MARKING							LETTERS & SYMBOLS	NOTES
				LINE 4"					LINE 12"	LINE 24"		
				EOP LT & RT	LEFT OF CL	CENTER LINE	RIGHT OF CL	INTERSECTION LANE	DIAGONAL LINE	INTERSECTION LANE STOP BAR		
				SOLID WHITE	SOLID YELLOW	SKIP-DASH YELLOW	SOLID YELLOW	SOLID WHITE	SOLID YELLOW	SOLID WHITE		
IL 13			FOOT	FOOT	FOOT	FOOT	FOOT	FOOT	FOOT	FOOT	SQ FT	
1830+10.98	TO	1831+40	130	260	130		130					
1831+40	TO	1837+67	627	1,254	627	157						
1837+67	TO	1842+53.65	487	974		122						
STA EQ 1842+53.65 BK = STA. 1849+41.36 AH												
1849+41.36	TO	1852+46	305	610		77						
1852+46	TO	1856+86	440	880	880		880	50				
1856+86	TO	1859+48	262	524	262		262	280		60	STA 1857+90 (TWLT ARROWS) STA 1859+60 (TWLT ARROWS)	
1859+48	TO	1860+10	62						40		INTERSECTION OF WALNUT LANE	
1860+10	TO	1861+80	170	340	170		170					
1861+80	TO	1869+30	750	1,500	1,500		1,500		330		STA 1862+80 (TWLT ARROWS) STA 1863+95 (TWLT ARROWS)	
1869+30	TO	1982+53.72	11,324	22,648		2,831						
STA EQ 1982+53.72 BK = STA. 1982+36.24 AH												
1982+36.24	TO	2030+61.39	4,826	9,652		1,207						
STA EQ 2030+61.39 BK = STA. 2037+82.80 AH												
2037+82.80	TO	2064+81.50	2,699	5,398		675						
STA EQ 2064+81.50 BK = STA. 2064+85.00 AH												
2064+85	TO	2103+11	3,826	7,652		957						
STA EQ 2103+11.00 BK = STA. 2103+00.00 AH												
2103+00	TO	2173+91	7,091	14,182		1,773						
STA EQ 2173+91.00 BK = STA. 2174+00.00 AH												
2174+00	TO	2216+74.50	4,275	8,550		1,069						
STA EQ 2216+74.50 BK = STA. 0+00 AH												
0+00.00	TO	85+67.50	8,568	17,136		2,142						
STA EQ 85+67.50 BK = STA. K 0+01.78 AH												
K 0+1.78	TO	K 2+32.80	232	464		58						
K 2+32.80	TO	K 3+57.75	125	250	125		125					
SUB TOTALS				92,274	3,694	11,068	3,067	280				
IL 13 TOTALS						110,383		380	40	60		

MODEL: Pavement Marking (Sheet)
FILE NAME: P:\GIS\Projects\DOT\Documents\DOT\Office\Direct\9080\Project\78A67\CAD\Drawings\DOT\78A67-SHE-Schedule.dgn

USER NAME = robert.handy	DESIGNED -	REVISED -
PLOT SCALE = 0.16666633 / in.	DRAWN -	REVISED -
PLOT DATE = 8/15/2024	CHECKED -	REVISED -
	DATE -	REVISED -

**STATE OF ILLINOIS
DEPARTMENT OF TRANSPORTATION**

PAVEMENT MARKING SCHEDULE

SCALE: SHEET OF SHEETS STA. TO STA.

F.A.P. RTE.	SECTION	COUNTY	TOTAL SHEETS	SHEET NO.
331	(10.11.11-1)RS-2	GALLATIN	31	20
CONTRACT NO. 78A67				
ILLINOIS FED. AID PROJECT				

IL 13

RAISED REFLECTIVE PAVEMENT MARKER SCHEDULE

LOCATION STATION TO STATION		LENGTH (INFORMATION ONLY)	RAISED REFLECTIVE PVMT MARKERS ONE-WAY AMBER (INFORMATION ONLY)	RAISED REFLECTIVE PVMT MARKERS TWO-WAY AMBER (INFORMATION ONLY)	RAISED REFLECTIVE PVMT MARKERS ONE-WAY CRYSTAL (INFORMATION ONLY)	RAISED REFLECTIVE PAVEMENT MARKERS	RAISED REFLECTIVE PAVEMENT MARKER REMOVAL	NOTES
IL 13								
1830+10.98	TO	1831+30	120		4	4	4	
1831+30.00	TO	1842+53.65	1,124		15	15	15	
STA EQ 1842+53.65 BK = STA. 1849+41.36 AH								
1849+41.36	TO	1852+46	305		4	4	4	
1852+46	TO	1856+86	440	22		22	22	
1856+86	TO	1859+48	262		14	7	21	
1859+48	TO	1860+10	62					INTERSECTION OF WALNUT LANE
1860+10	TO	1862+80	270		14	14	28	
1862+80	TO	1863+25	45	4		2	6	
1863+25	TO	1869+30	605	32			32	
1869+30	TO	1942+26.58	7,297		92		92	
1942+26.58	TO	1944+53.42						OMISSION GAP SN 030-0016
1944+53.42	TO	1971+81.22	2,728		35		35	
1971+81.22	TO	1973+95.42						OMISSION GAP SN 030-0017
1973+95.42	TO	1982+53.72	859		11		11	
STA EQ 1982+53.72 BK = STA. 1982+36.24 AH								
1982+36.24	TO	2030+61.39	4,826		61		61	
STA EQ 2030+61.39 BK = STA. 2037+82.80 AH								
2037+82.80	TO	2064+81.50	2,699		34		34	
STA EQ 2064+81.50 BK = STA. 2064+85.00 AH								
2064+85	TO	2103+11	3,826		48		48	
STA EQ 2103+11.00 BK = STA. 2103+00.00 AH								
2103+00	TO	2173+91	7,091		89		89	
STA EQ 2173+91.00 BK = STA. 2174+00.00 AH								
2174+00	TO	2209+85	3,585		45		45	
2209+85	TO	2211+15						OMISSION GAP - SN 030-0001
2211+15	TO	2216+74.50	560		7		7	
STA EQ 2216+74.50 BK = STA. 0+00 AH								
+00	TO	66+85	6,685		84		84	
66+85	TO	70+86	401		6		6	CONCRETE PAVEMENT-OLD SHAWNEETOWN RD INTERSECTION
70+86	TO	80+75.50	990		13		13	
80+75.50	TO	82+06.50						OMISSION GAP - SN 030-0023
82+06.50	TO	85+67.50	361		5		5	
STA EQ 85+67.50 BK = STA. K 0+01.78 AH								
K 0+1.78	TO	K 3+57.75	356		5		5	
IL 13 TOTALS						667	667	

MODEL: Raise Road Pavement Mark Schedule (Sheet)
 FILE NAME: P:\GIS\Projects\2024\2024-08-15\DOT\Documents\DOT\Office\Direct\9080\Project\78A67\CAD\Drawings\DOT\78A67-SHE-Schedule.dgn

USER NAME = robert.handy	DESIGNED -	REVISED -
PLOT SCALE = 0.16666833 / in.	DRAWN -	REVISED -
PLOT DATE = 8/15/2024	CHECKED -	REVISED -
	DATE -	REVISED -

STATE OF ILLINOIS
DEPARTMENT OF TRANSPORTATION

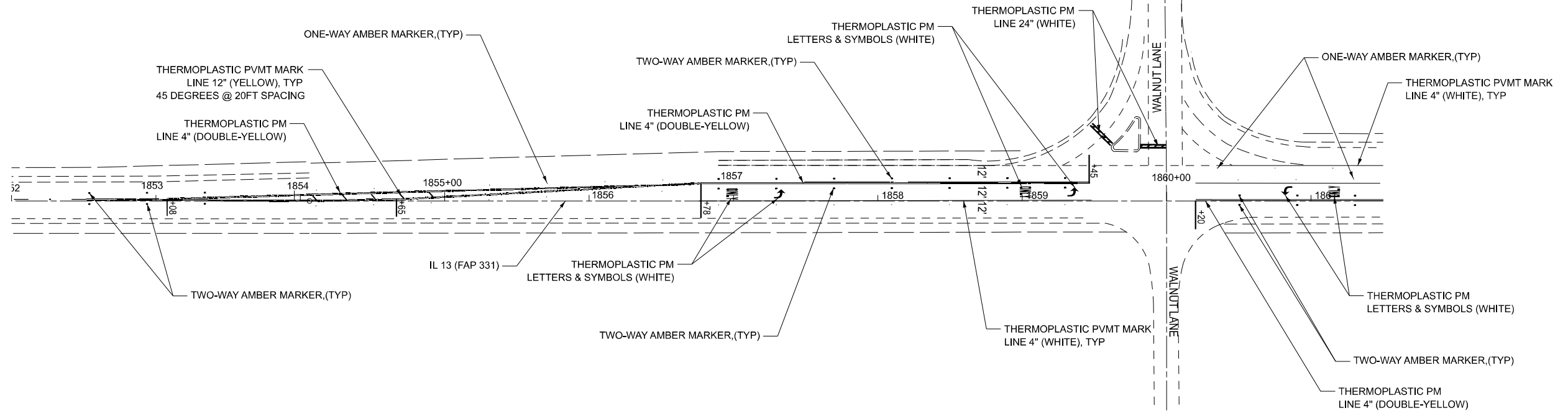
RAISED REFLECTIVE PAVEMENT MARKER SCHEDULE

SCALE: SHEET OF SHEETS STA. TO STA.

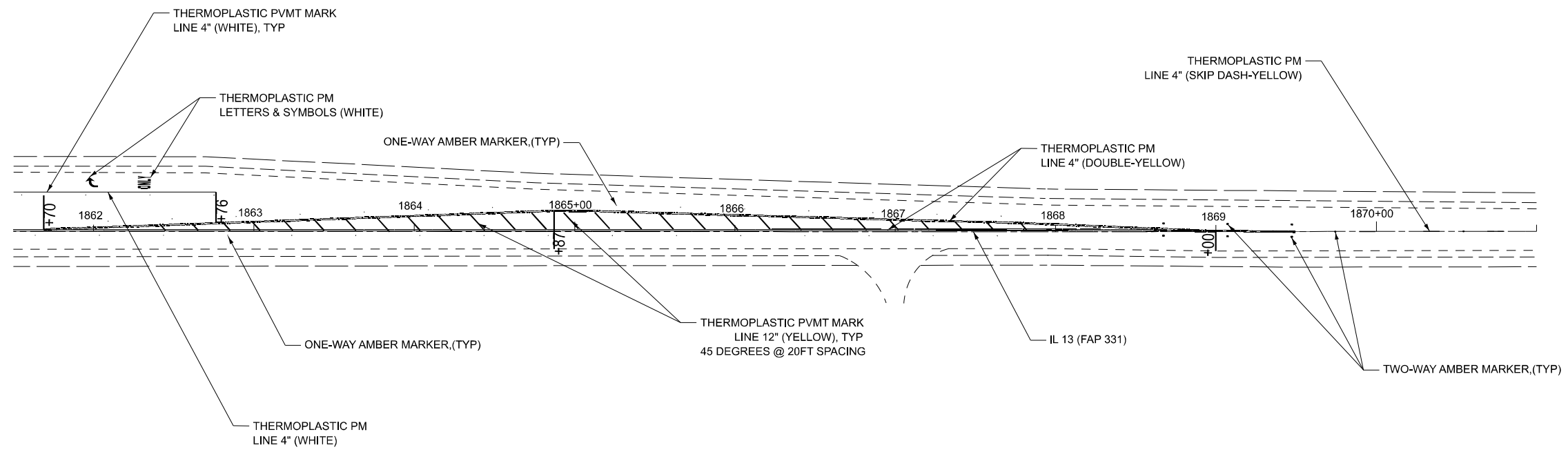
F.A.P. RTE.	SECTION	COUNTY	TOTAL SHEETS	SHEET NO.
331	(10.11.11-1)RS-2	GALLATIN	31	21
			CONTRACT NO. 78A67	
ILLINOIS FED. AID PROJECT				



N.T.S



N.T.S



MODEL: IL_13 (N:\hwy - Pavmt Mark Plan - 1 (Sheet))
FILE NAME: p:\projects\2024\78A67\DOT\Documents\DOT Office\District 9\ORD Project\78A67\CAD\Drawings\DOT\78A67-SHF Pavement Marking.dgn

USER NAME = robert.handy	DESIGNED -	REVISED -
	DRAWN -	REVISED -
PLOT SCALE = 0.16666833' / in.	CHECKED -	REVISED -
PLOT DATE = 8/15/2024	DATE -	REVISED -

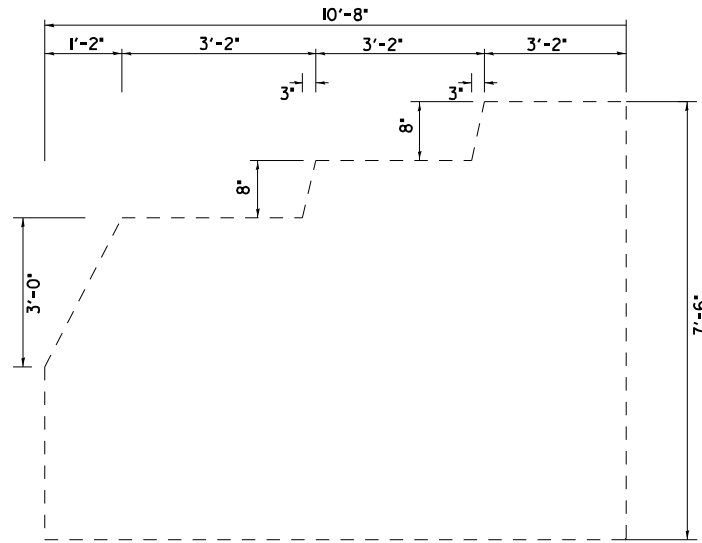
**STATE OF ILLINOIS
DEPARTMENT OF TRANSPORTATION**

**PAVEMENT MARKINGS
WALNUT RD INTERSECTION**

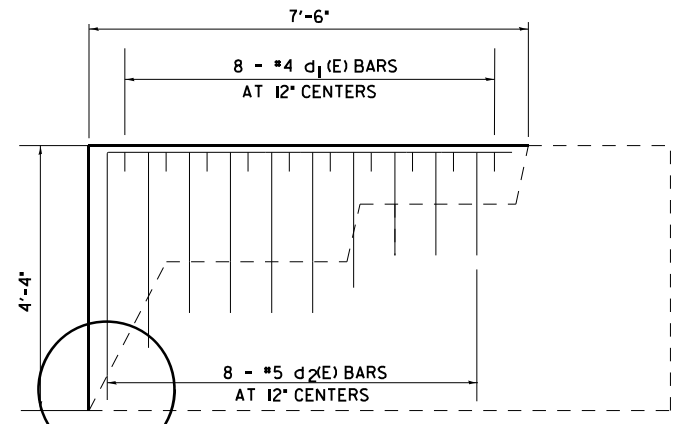
SCALE: SHEET 1 OF 1 SHEETS STA. TO STA.

F.A. RTE.	SECTION	COUNTY	TOTAL SHEETS	SHEET NO.
331	(10,11,11-1)RS-2	GALLATIN	31	22
CONTRACT NO. 78A67				
ILLINOIS FED. AID PROJECT				

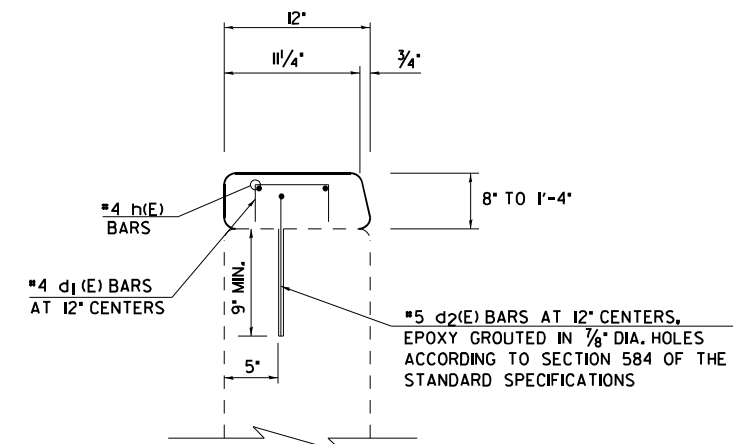
WINGWALL MODIFICATION
 (SN 030-0016)
 (SN 030-0017)
 (2 EAST END AND 2 WEST END)



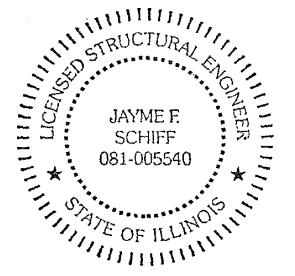
INSIDE ELEVATION (EXISTING)



INSIDE ELEVATION (PROPOSED)

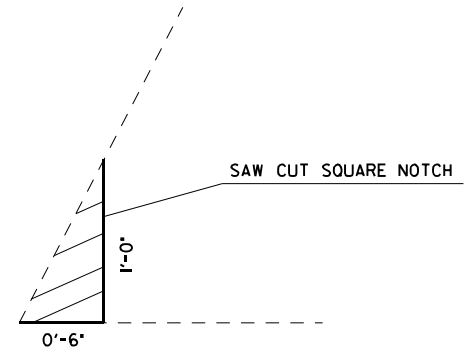


SECTION A-A



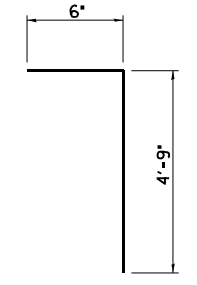
EXPIRES 11-30-2024

Jayme F. Schiff

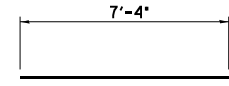


DETAIL A

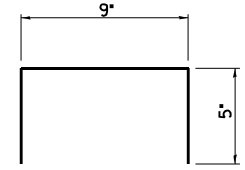
LIMITS OF CONCRETE REMOVAL



BAR d₂(E)



BAR h(E)



BAR d₁(E)

BILL OF MATERIAL

TOTAL IS FOR 8 WINGWALLS

BAR	NO.	SIZE	LENGTH	SHAPE
d ₁ (E)	64	#4	1'-7"	
d ₂ (E)	64	#5	5'-3"	
h(E)	16	#4	7'-4"	
CONCRETE SUPERSTRUCTURE			CU. YD.	2.6
REINFORCEMENT BARS, EPOXY COATED			POUNDS	360

NOTES:
 BARS DESIGNATED (E) SHALL BE EPOXY COATED.
 SAW CUT AND CONCRETE REMOVAL COST IS INCLUDED IN THE COST OF THE CONCRETE

MODEL: WingWall Mod SN 030-17 (Sheet)
 FILE NAME: P:\Projects\2024\SN030-17\Drawings\WingWall Mod SN 030-17 (Sheet).dwg

USER NAME = robert.handy	DESIGNED -	REVISED -
PLOT SCALE = 0.16666633 / in.	DRAWN -	REVISED -
PLOT DATE = 8/15/2024	CHECKED -	REVISED -
	DATE -	REVISED -

STATE OF ILLINOIS
DEPARTMENT OF TRANSPORTATION

WINGWALL MODIFICATION DETAILS
 SN 030-0016 & SN 030-0017

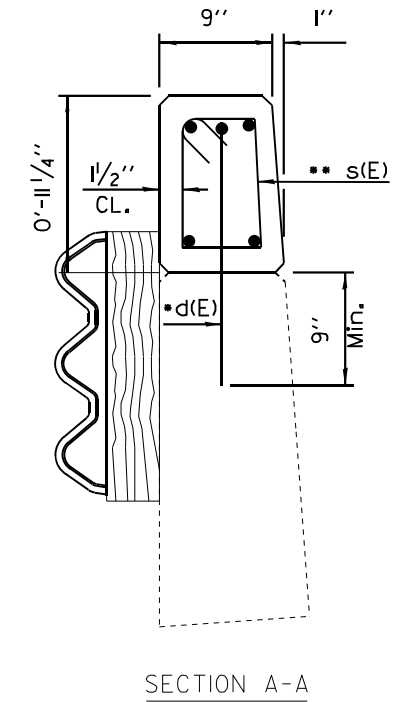
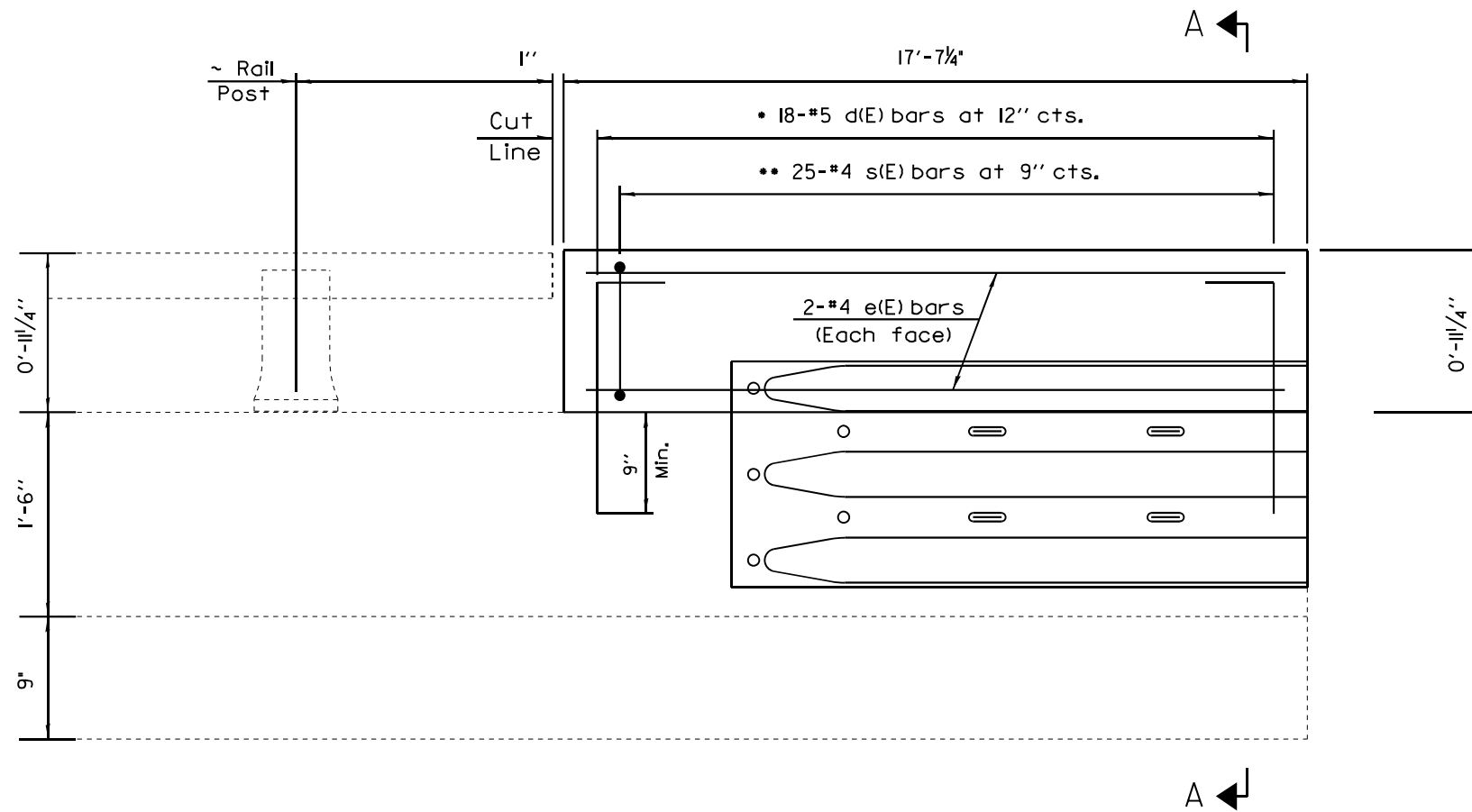
SCALE: SHEET 23 OF 31 SHEETS STA. TO STA.

F.A.P. RTE.	SECTION	COUNTY	TOTAL SHEETS	SHEET NO.
331	(10.11.11-1)RS-2	GALLATIN	31	23
			CONTRACT NO. 78A67	
ILLINOIS FED. AID PROJECT				

PARAPET MODIFICATION DETAILS

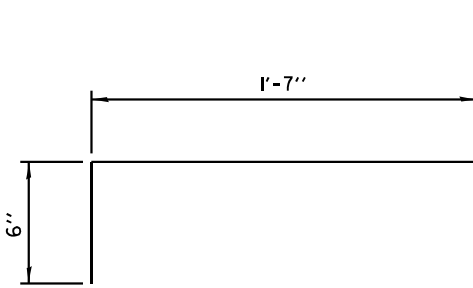
SN 030-0016

(2 NORTH END AND 2 SOUTH END)

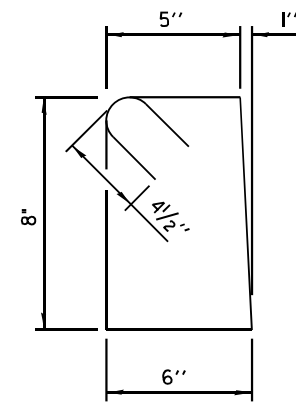


INSIDE ELEVATION OF PARAPET

SECTION A-A



BAR d(E)



BAR s(E)

- d(E) bars to be epoxy grouted in 1/8"ø x 9" minimum holes. Cut in field as required.
- Tilt s(E) bars as needed to fit.

Note
To be used: All sections where proposed Traffic Barrier Terminal, Type 6B will tie into existing parapet wall (4 locations total). (See Highway Standard 631033)

NOTE
e(E) BARS MAY HAVE TO BE CUT IN THE FIELD TO FIT

BILL OF MATERIAL

Bar	No.	Size	Length	Shape
d(E)	72	#5	2'-1"	
e(E)	16	#4	17'-4"	
s(E)	100	#4	3'-0"	
Concrete Superstructure			Cu. Yd.	2.2
Reinforcement Bars, Epoxy Coated			Pound	550

NOTE
BARS DESIGNATED (E) SHALL BE EPOXY COATED

MODEL: 030-0016.dwg | USER: robert.handy | DATE: 8/15/2024

USER NAME = robert.handy	DESIGNED -	REVISED -
PLOT SCALE = 0.16666833' / in.	DRAWN -	REVISED -
PLOT DATE = 8/15/2024	CHECKED -	REVISED -
	DATE -	REVISED -

**STATE OF ILLINOIS
DEPARTMENT OF TRANSPORTATION**

**PARAPET MODIFICATION DETAIL
SN 030-0016**

SCALE: SHEET OF SHEETS STA. TO STA.

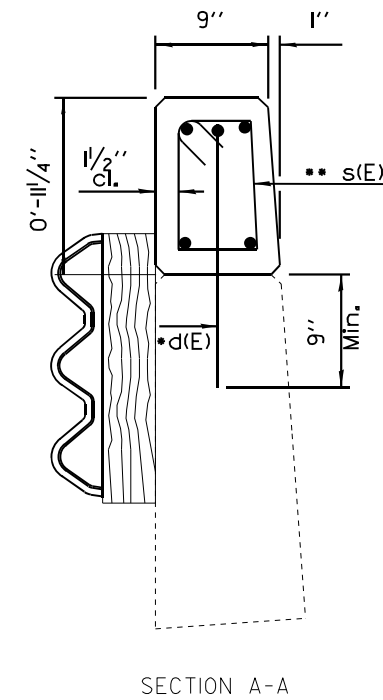
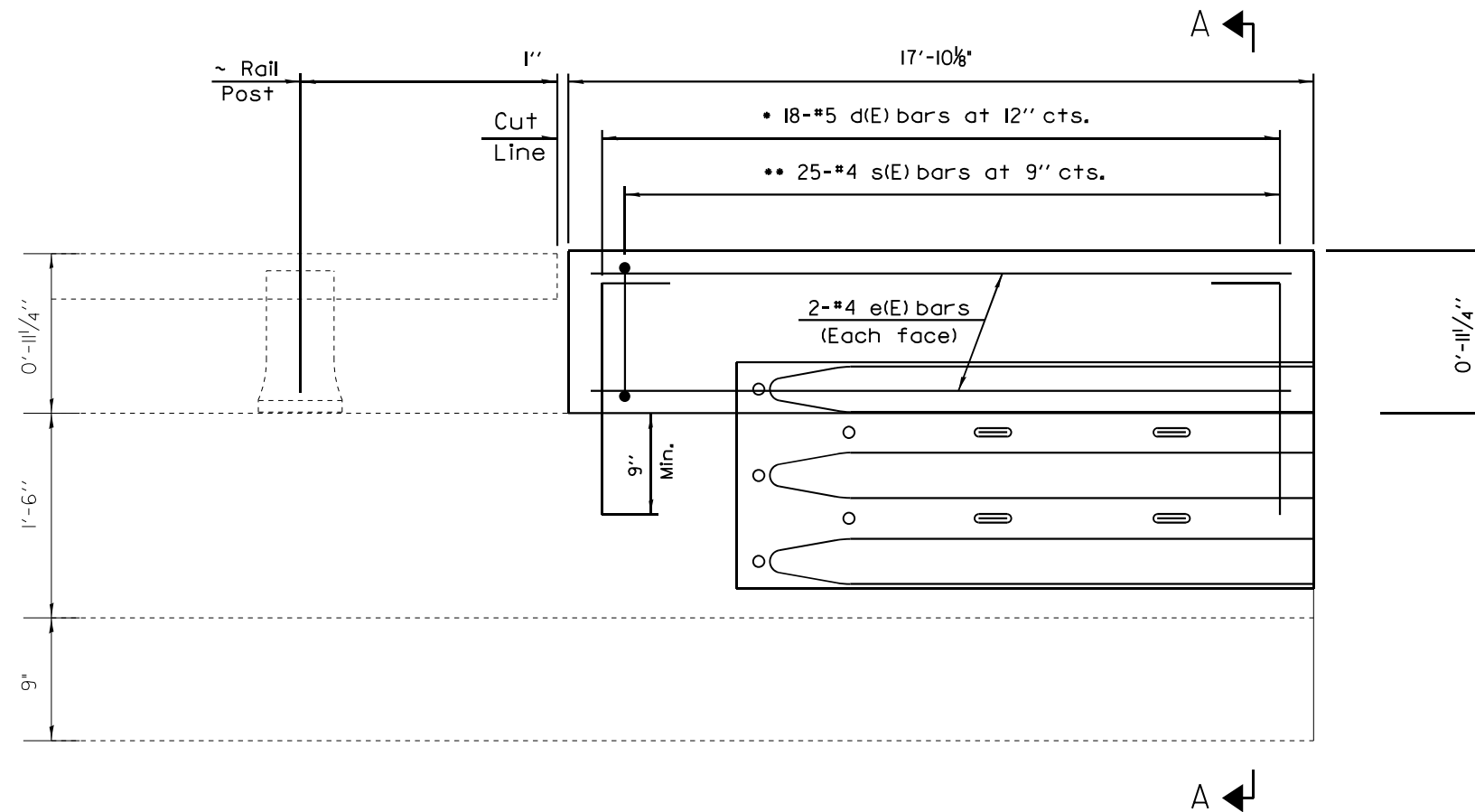
F.A.P. RTE.	SECTION	COUNTY	TOTAL SHEETS	SHEET NO.
331	(10.11.11-1)RS-2	GALLATIN	31	24
CONTRACT NO. 78A67				
ILLINOIS FED. AID PROJECT				

PARAPET MODIFICATION DETAILS

SN 030-0017

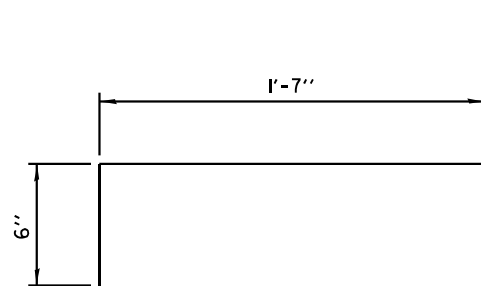
(NORTH END)

EAST END & WEST END

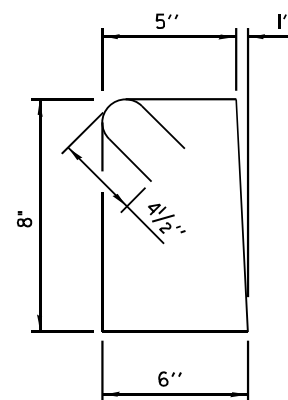


INSIDE ELEVATION OF PARAPET

SECTION A-A



BAR d(E)



BAR s(E)

- d(E) bars to be epoxy grouted in $\frac{1}{8}$ " x 9" minimum holes. Cut in field as required.
- Tilt s(E) bars as needed to fit.

Note

To be used: All sections where proposed Traffic Barrier Terminal, Type 6B will tie into existing parapet wall (4 locations total). (See Highway Standard 631033)

NOTE

e(E) BARS MAY HAVE TO BE CUT IN THE FIELD TO FIT

BILL OF MATERIAL

Bar	No.	Size	Length	Shape
d(E)	36	#5	2'-1"	┌─┐
e(E)	8	#4	17'-7"	───
s(E)	50	#4	3'-0"	└─┘
Concrete Superstructure			Cu. Yd.	1.2
Reinforcement Bars, Epoxy Coated			Pound	280

NOTE

BARS DESIGNATED (E) SHALL BE EPOXY COATED

MODEL: 030-0017-ParapetNorth (Sheet)
 FILE NAME: P:\Projects\030-0017\030-0017-ParapetNorth.dwg

USER NAME = robert handy	DESIGNED -	REVISED -
PLOT SCALE = 0.16666633 / in.	DRAWN -	REVISED -
PLOT DATE = 8/15/2024	CHECKED -	REVISED -
	DATE -	REVISED -

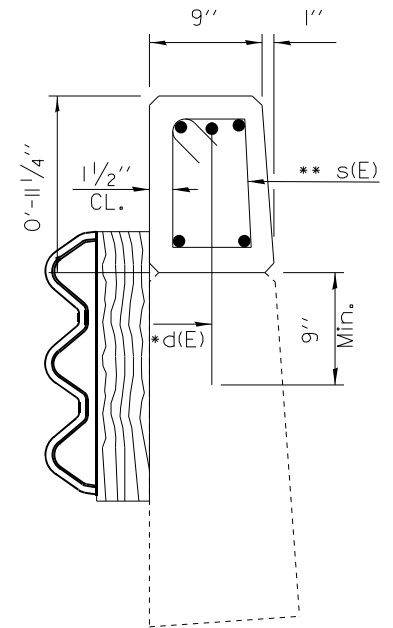
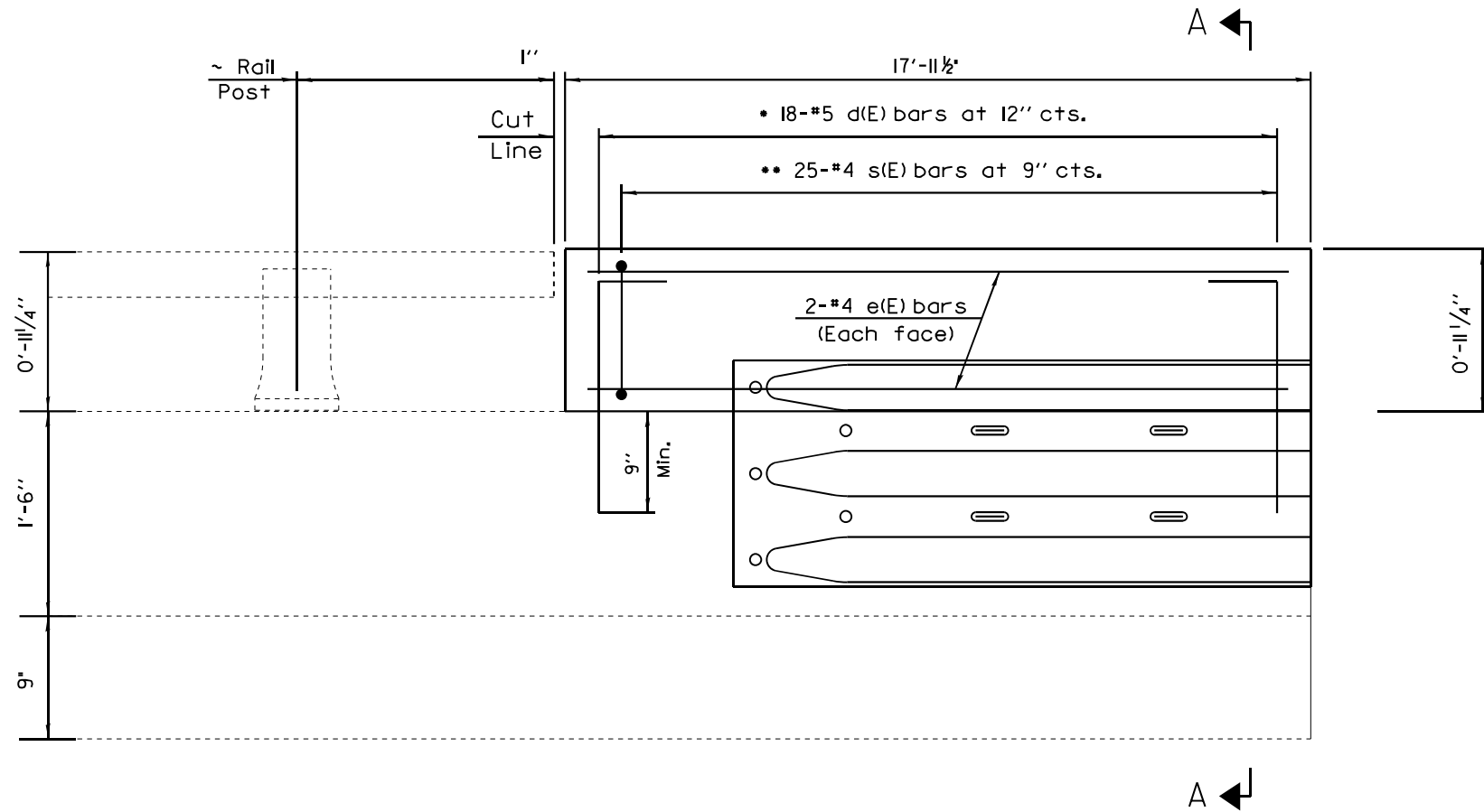
STATE OF ILLINOIS
DEPARTMENT OF TRANSPORTATION

PARAPET MODIFICATION DETAIL (NORTH END)
SN 030-0017

SCALE: SHEET 25 OF 31 SHEETS STA. TO STA.

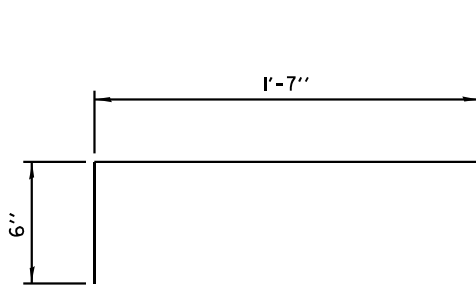
F.A.P. RTE.	SECTION	COUNTY	TOTAL SHEETS	SHEET NO.
331	(10,11,11-1)RS-2	GALLATIN	31	25
CONTRACT NO. 78A67				
ILLINOIS FED. AID PROJECT				

PARAPET MODIFICATION DETAILS
 SN 030-0017
 (SOUTH CURB)
 EAST END & WEST END

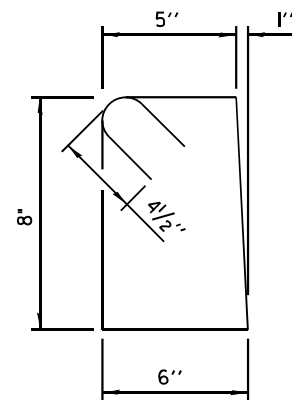


INSIDE ELEVATION OF PARAPET

SECTION A-A



BAR d(E)



BAR s(E)

- d(E) bars to be epoxy grouted in 1/8"Ø x 9" minimum holes. Cut in field as required.
- Tilt s(E) bars as needed to fit.

Note

To be used: All sections where proposed Traffic Barrier Terminal, Type 6B will tie into existing parapet wall (4 locations total). (See Highway Standard 631033)

NOTE

e(E) BARS MAY HAVE TO BE CUT IN THE FIELD TO FIT

BILL OF MATERIAL

Bar	No.	Size	Length	Shape
d(E)	36	#5	2'-1"	┌
e(E)	8	#4	17'-8"	—
s(E)	50	#4	3'-0"	┐
Concrete Superstructure			Cu. Yd.	1.2
Reinforcement Bars, Epoxy Coated			Pound	280

NOTE

BARS DESIGNATED (E) SHALL BE EPOXY COATED

MODEL: 030-0017.dwg
 FILE NAME: P:\Projects\030-0017\030-0017.dwg
 PROJECT: 030-0017
 SHEET: 24 OF 28

USER NAME = robert.handy	DESIGNED -	REVISED -
PLOT SCALE = 0.16666633 / in.	DRAWN -	REVISED -
PLOT DATE = 8/15/2024	CHECKED -	REVISED -
	DATE -	REVISED -

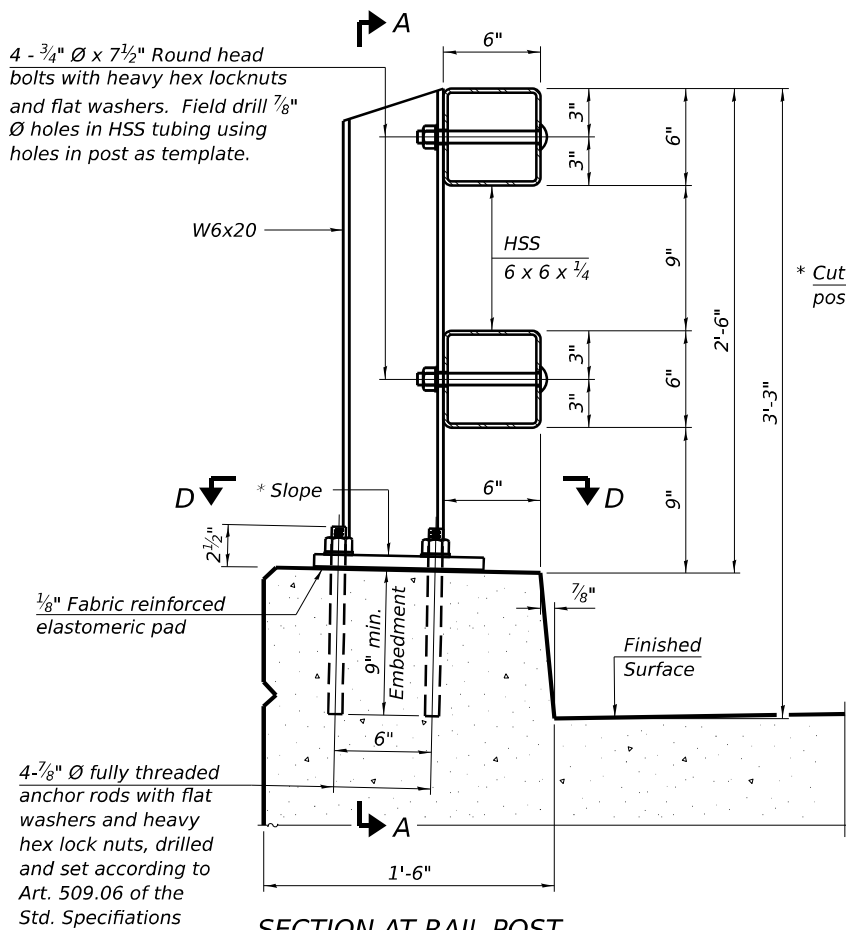
STATE OF ILLINOIS
 DEPARTMENT OF TRANSPORTATION

DETAILS PARAPET DETAIL (SOUTH END)
 SN 030-0017

SCALE: SHEET 24 OF 28 SHEETS STA. TO STA.

F.A.P. RTE.	SECTION	COUNTY	TOTAL SHEETS	SHEET NO.
331	(10,11,11-1)RS-2	GALLATIN	31	26
CONTRACT NO. 78A67				
ILLINOIS FED. AID PROJECT				

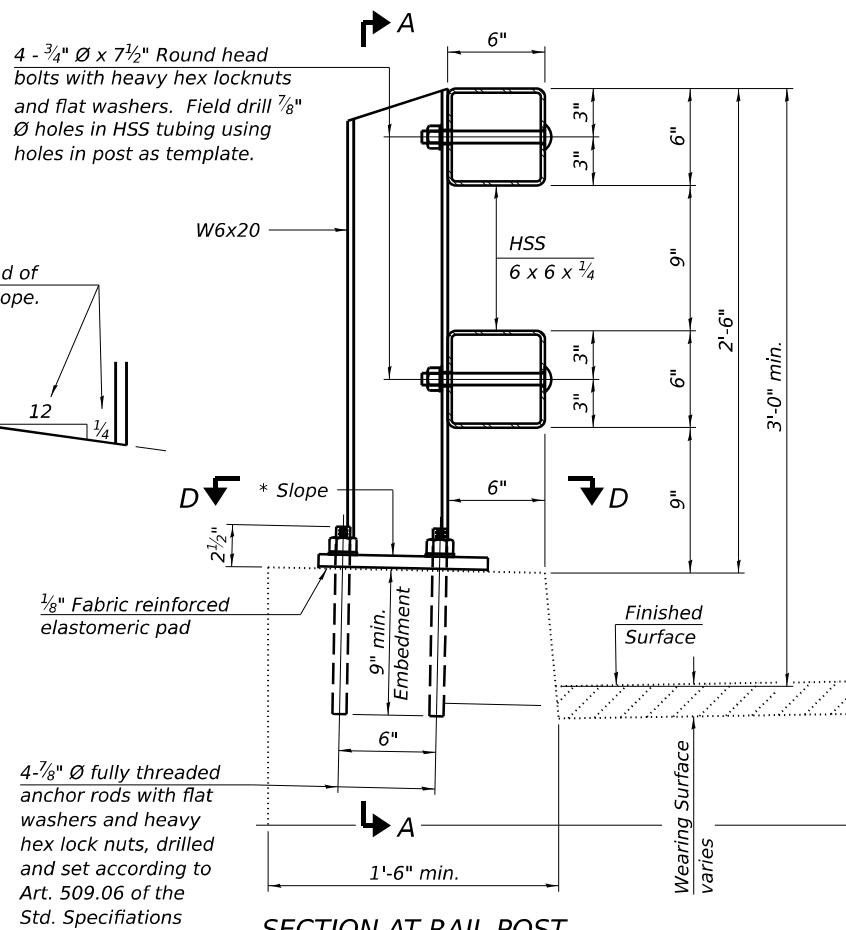
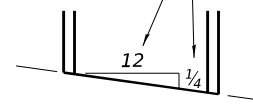
4 - 3/4" Ø x 7 1/2" Round head bolts with heavy hex locknuts and flat washers. Field drill 7/8" Ø holes in HSS tubing using holes in post as template.



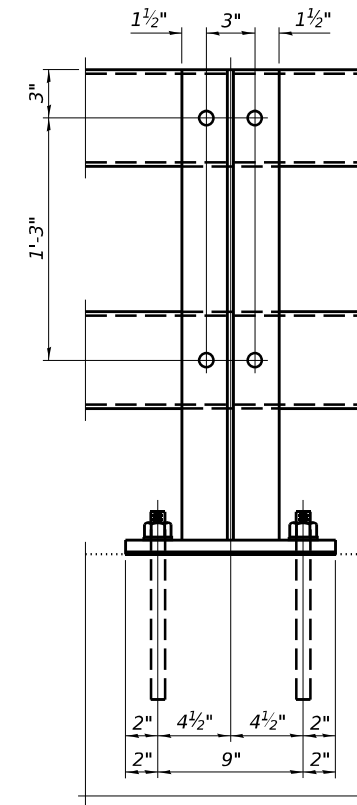
SECTION AT RAIL POST
(New construction)

4 - 3/4" Ø x 7 1/2" Round head bolts with heavy hex locknuts and flat washers. Field drill 7/8" Ø holes in HSS tubing using holes in post as template.

* Cut bottom end of post to curb slope.

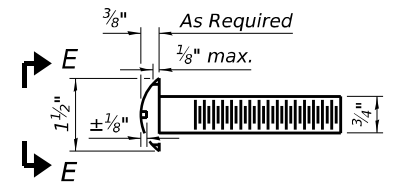


SECTION AT RAIL POST
(Retrofit construction)

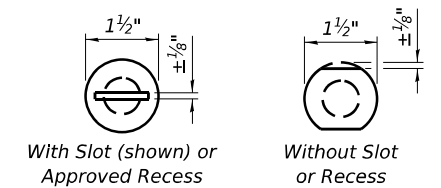


SECTION A-A

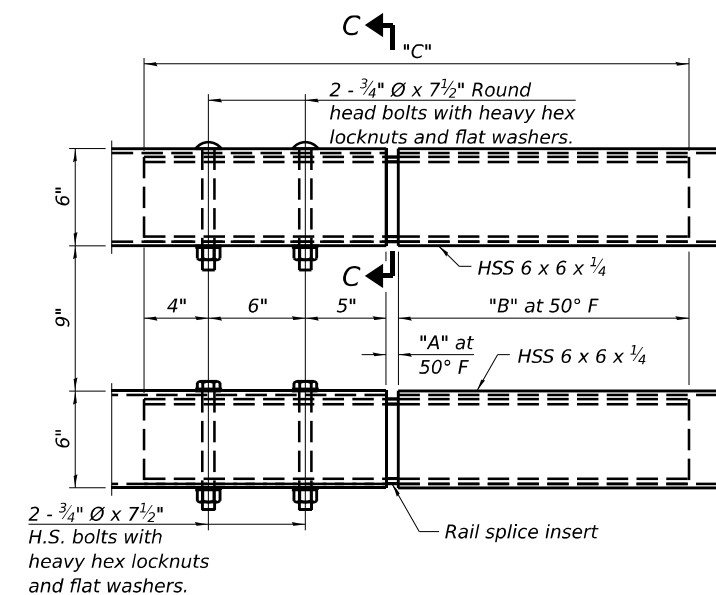
Notes:
All HSS tubing shall be ASTM A500 grade C.
All plates shall be AASHTO M270 grade 50.
All heavy hex nuts shall be according to ASTM A563 grade DH.
All fully threaded anchor rods shall be ASTM F1554 grade 105.
The post base plate shall be fastened to the curb snug tight and given an additional 1/8" turn.
Posts shall not be located closer than 2'-6" to a bridge expansion joint.
Provide one 1/8" and two 1/16" steel shims for 25% of the posts. Shims shall be similar to base plates in size and holes.
All steel rail elements shall be galvanized according to Article 509.05 of the Standard Specifications.
All HSS tubing shall be CVN tested according to Article 1006.34(b) of the Standard Specifications.
Rail splice inserts may be built out of 2 - 3/8" bent plates in lieu of the 4 plate rail splice inserts shown, provided the outside dimensions are matched.
All round head bolts shall be ASTM A449.
The centerline of rail splices shall be placed between 1'-8" to 2'-6" from the centerline of the posts. The free end of the splice tube shall be oriented away from the closest post.



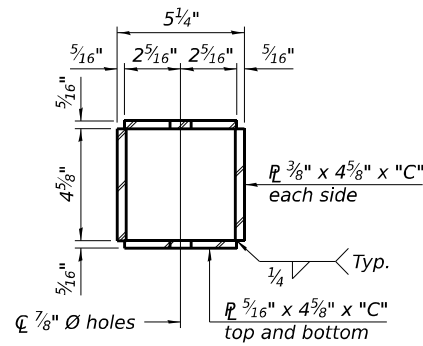
ROUND HEAD BOLT DETAIL



VIEW E-E



TOP AND BOTTOM RAIL SPLICE ELEVATION

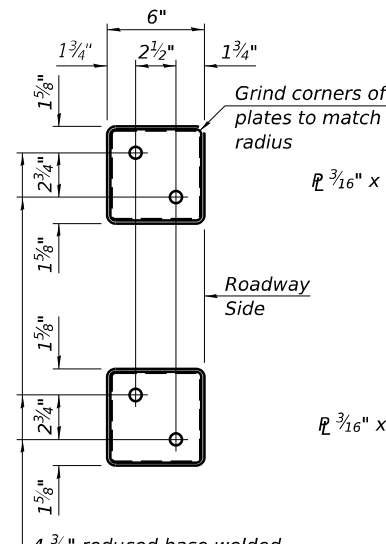


SECTION C-C

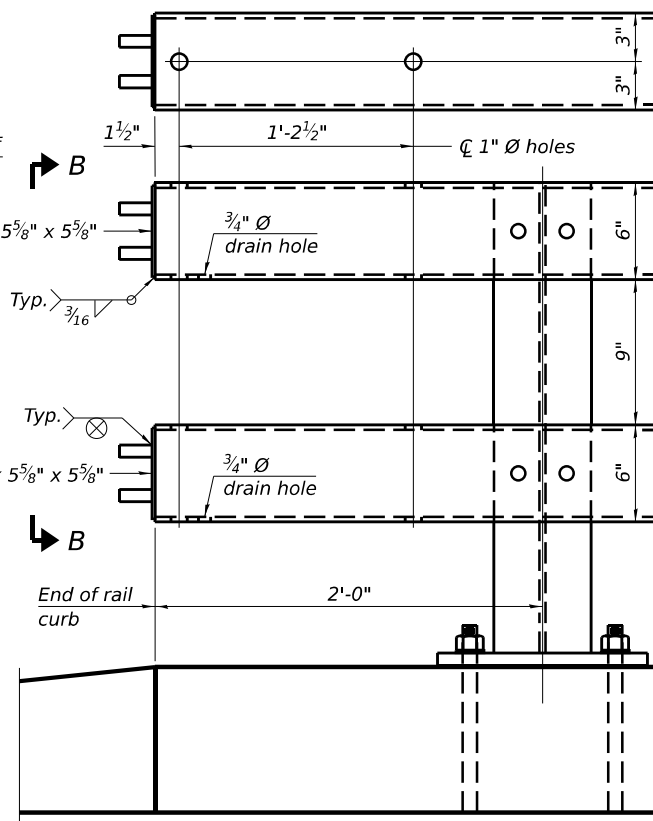
SPLICE DIMENSIONS

Location	T	A	B	C
All locs. not over exp. jts.	0	1/2"	1'-6"	2'-9 1/2"
Over Strip Seal Jt.	≤ 4"	2 1/2"	1'-8"	3'-1 1/2"
Over Finger or Modular Jt.	≤ 9 1/2"	5 1/2"	1'-10 3/4"	3'-7 1/4"
Over Finger or Modular Jt.	≤ 15"	8 1/4"	2'-1 1/2"	4'-0 3/4"

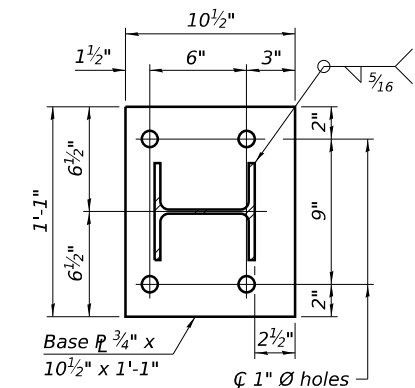
T = ; total movement along centerline of roadway at expansion joint.



VIEW B-B



END OF RAIL DETAILS



SECTION D-D

BILL OF MATERIAL

Item	Unit	Quantity
Steel Railing, Type CO-10	Foot	249

RAILING CRITERIA

MASH 2016 Test Level	4
Railing Weight (plf)	75
Min P _c (psi)	4,500
Post Spacing Range	6'-8" - 10'-0"

STATE OF ILLINOIS
DEPARTMENT OF TRANSPORTATION

STEEL RAILING, TYPE CO-10
STRUCTURE NO. 030-0001

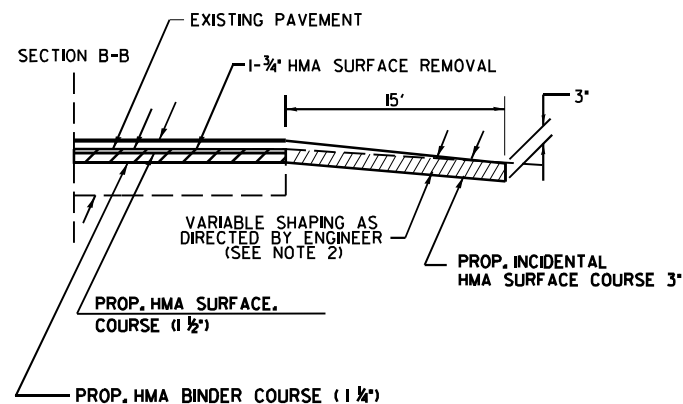
SCALE: SHEET OF SHEETS STA. TO STA.

F.A.P. RTE.	SECTION	COUNTY	TOTAL SHEETS	SHEET NO.
331	(10.11.11-1)RS-2	GALLATIN	31	27
CONTRACT NO. 78A67				
ILLINOIS / FED. AID PROJECT				

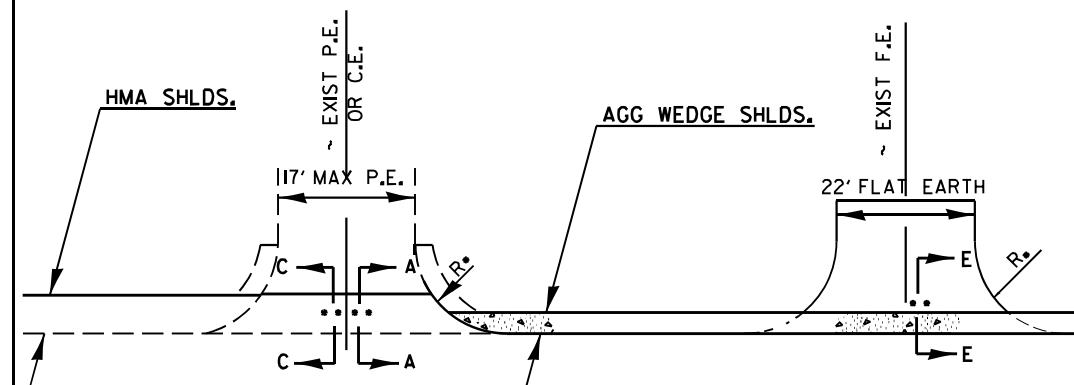
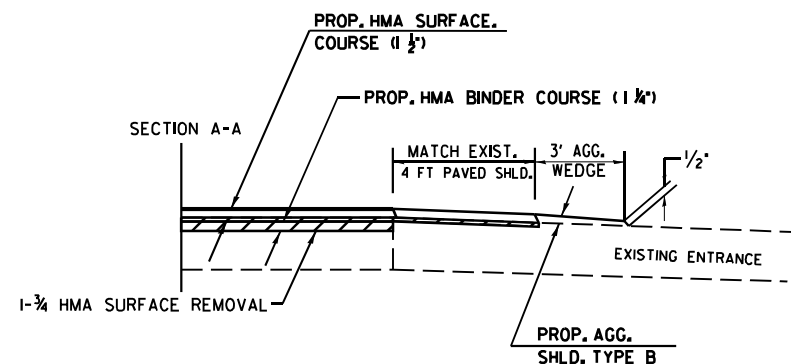
USER NAME = robert.handy	DESIGNED -	REVISED -
PLOT SCALE = 0.16666633 / in.	DRAWN -	REVISED -
PLOT DATE = 8/15/2024	CHECKED -	REVISED -
	DATE -	REVISED -

SIDEROAD AND ENTRANCE

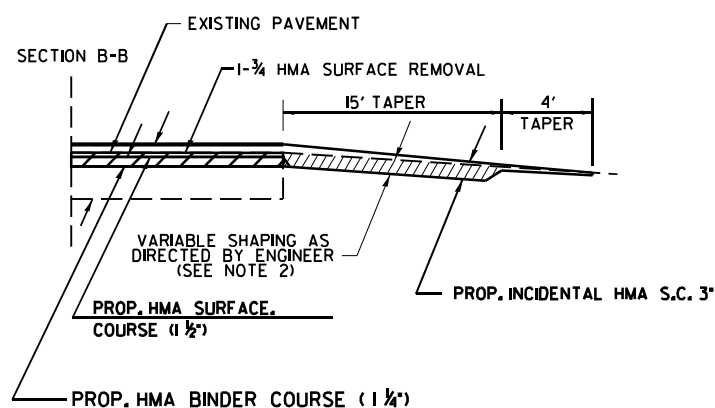
EX. HMA SIDEROAD



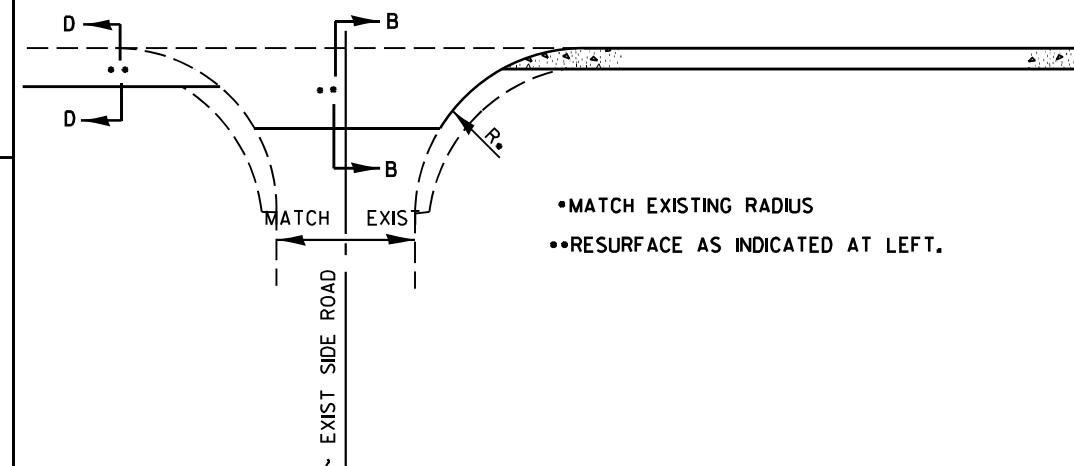
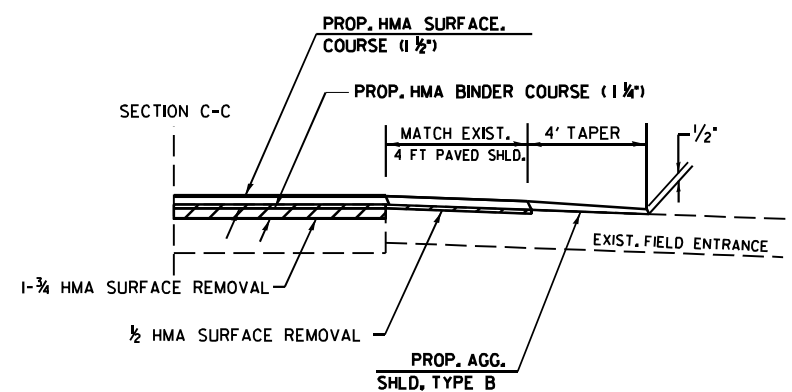
AGGREGATE PRIVATE OR COMMERCIAL ENTRANCE



EX. OIL & CHIP SIDEROAD



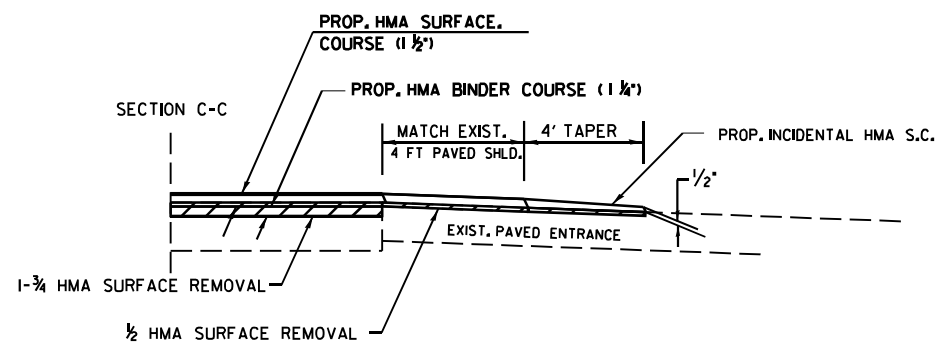
AGG. OR EARTH FIELD ENTRANCE



ENTRANCE SCHEDULE

TYPE	NUMBER OF ENTRANCES
P.E.	20
C.E.	0

HMA, P.C.C. OR OIL & CHIP PRIVATE OR COMMERCIAL ENTRANCE (HMA SHLD.)



NOTES

- IF EXISTING SUBBASE IS INADEQUATE, AS DETERMINED BY THE ENGINEER, THE SIDE ROADS SHALL BE CORED OUT AND AGGREGATE SUBBASE, TYPE B SHALL BE PLACED FOR BASE. THE COST OF CORING OUT THE SIDE ROAD AND ANY AGGREGATE BASE COURSE SHALL BE PAID FOR AS SPECIFIED IN ART. 109.04 OF THE STANDARD SPECIFICATIONS FOR ROAD AND BRIDGE CONSTRUCTION. IF EXISTING SUBBASE IS DETERMINED TO BE ADEQUATE, THE PREPARATION OF THE BASE SHALL BE CONSTRUCTED ACCORDING TO ARTICLE 406.09.
- VARIABLE SHAPING IS INCLUDED IN THE COST OF INCIDENTAL HOT-MIX ASPHALT SURFACE.

DRAWN	7-14-24
REVISED	
REVISED	
REVISED	

USER NAME = robert handy	DESIGNED -	REVISED -
PLOT SCALE = 0.16666833 / in.	DRAWN -	REVISED -
PLOT DATE = 8/15/2024	CHECKED -	REVISED -
	DATE -	REVISED -

STATE OF ILLINOIS
DEPARTMENT OF TRANSPORTATION

SIDEROAD AND ENTRANCE DETAILS

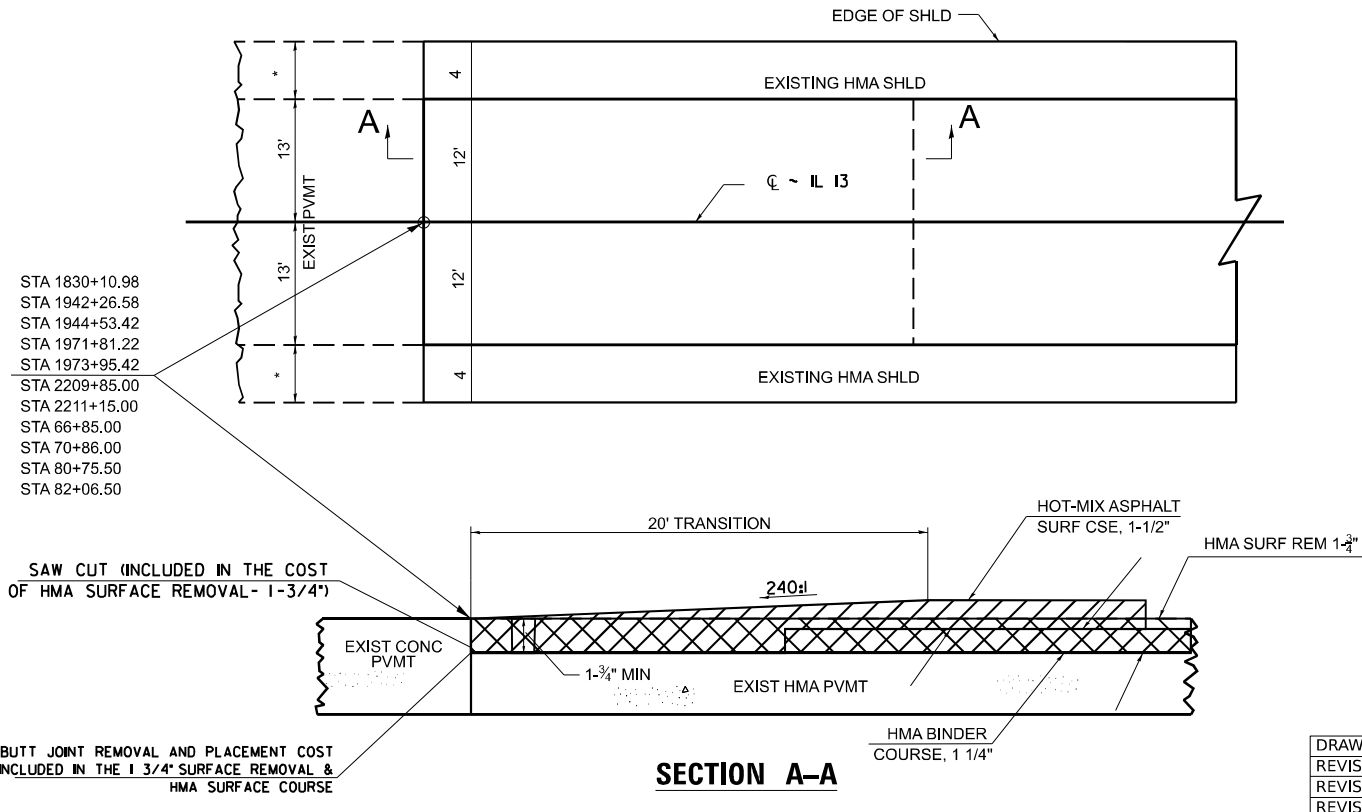
SCALE: SHEET OF SHEETS STA. TO STA.

F.A.P. RTE.	SECTION	COUNTY	TOTAL SHEETS	SHEET NO.
331	(10,11,11-1)RS-2	GALLATIN	31	28
CONTRACT NO. 78A67				
ILLINOIS FED. AID PROJECT				

MODEL: SideroadEntrance (Sheet)
FILE NAME: P:\GIS\Projects\DOT\Office\Direct\9090\Project\78A67\CAD\Drawings\DOT\78A67-SHR-EntranceSides.dgn

BUTT JOINT WITH MILLING

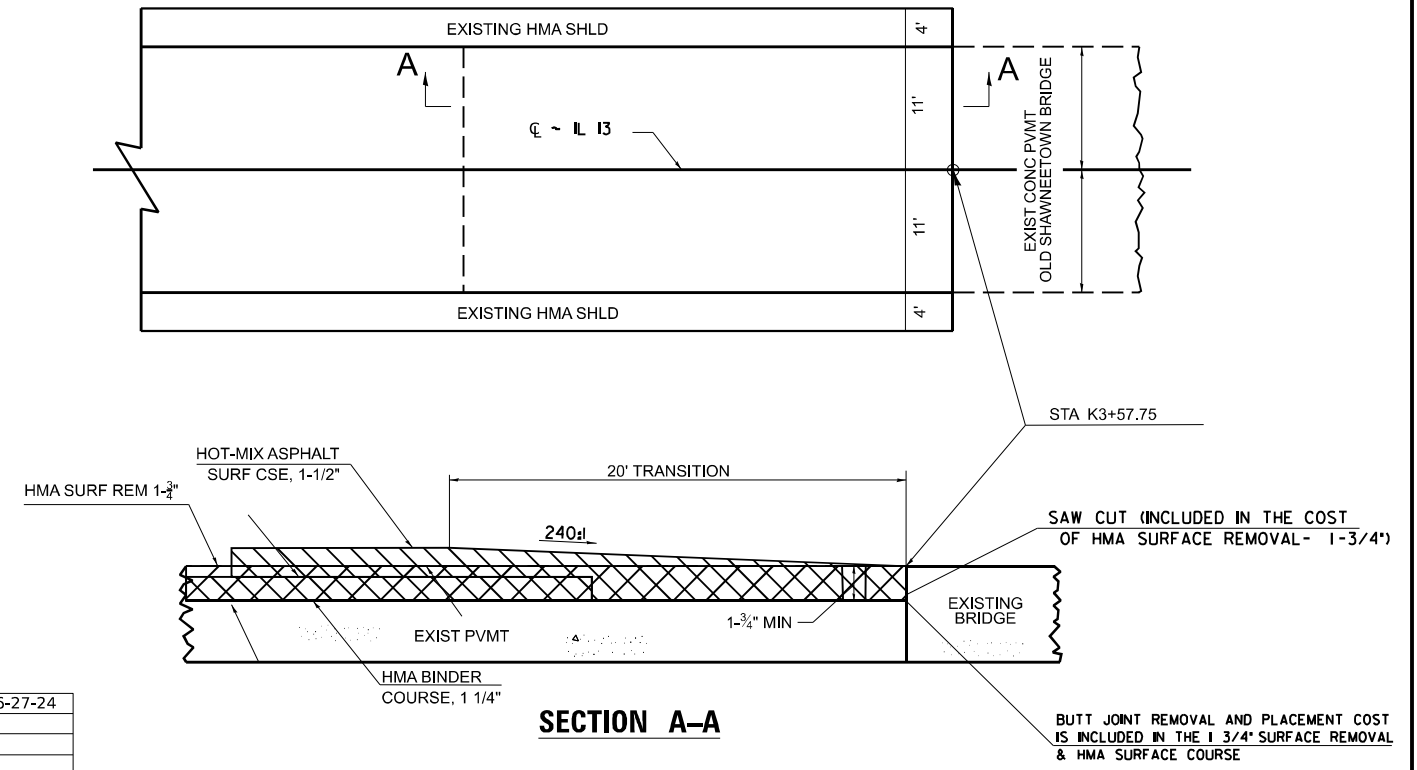
N.T.S.



SECTION A-A

BUTT JOINT WITH MILLING

END OF PROJECT
N.T.S.



SECTION A-A

DRAWN	03-15-24	DRAWN	06-27-24
REVISED		REVISED	
REVISED		REVISED	
REVISED		REVISED	

MODEL: J:\in\Detail\Sheet1
 FILE NAME: P:\Bids\2024\11\11111\11111\DOT\Office\District 9\ORD Project\78947\CAD\Drawings\DOT\947-SH-CH-Details.dwg

USER NAME = robert.handy	DESIGNED -	REVISED -
PLOT SCALE = 0.16666833' / in.	DRAWN -	REVISED -
PLOT DATE = 8/15/2024	CHECKED -	REVISED -
	DATE -	REVISED -

**STATE OF ILLINOIS
DEPARTMENT OF TRANSPORTATION**

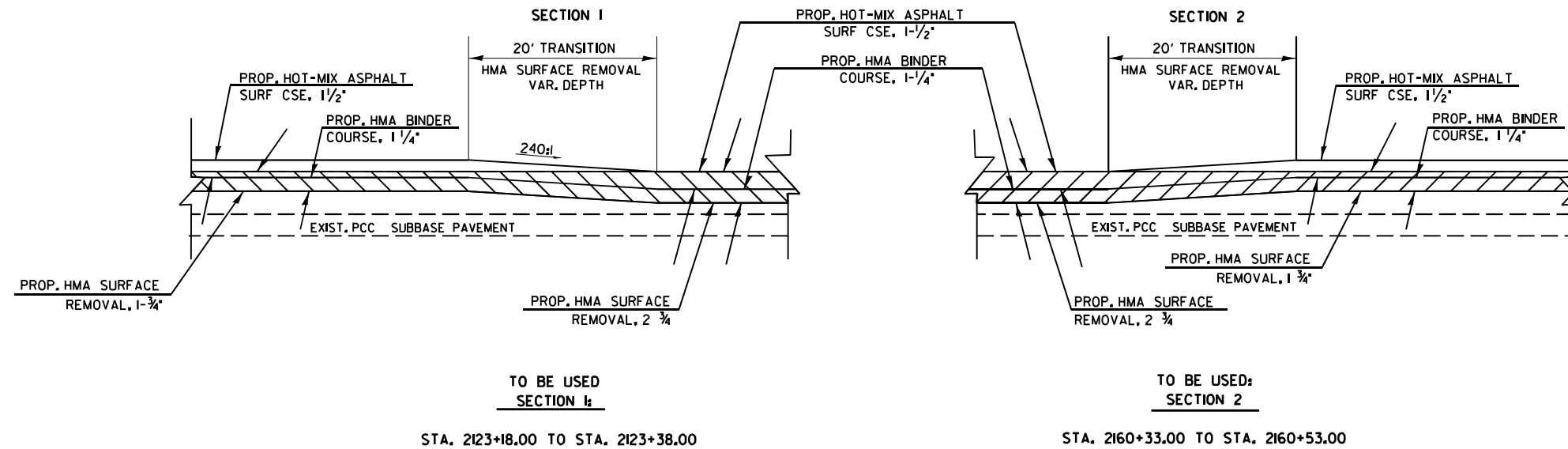
BUTT JOINT DETAIL

SCALE: SHEET 11 OF 12 SHEETS STA. TO STA.

F.A.P. RTE.	SECTION	COUNTY	TOTAL SHEETS	SHEET NO.
331	(10,11,11-1)RS-2	GALLATIN	31	29
CONTRACT NO.				
ILLINOIS FED. AID PROJECT				

PAVEMENT TRANSITION DETAIL

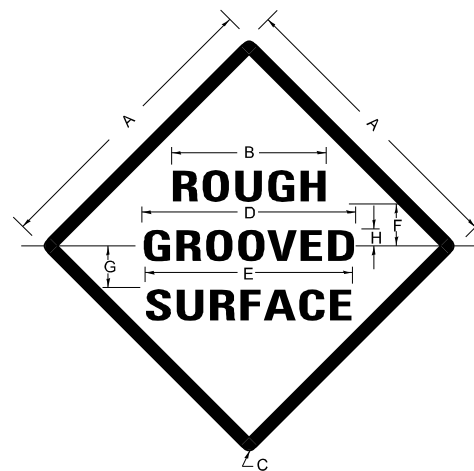
OLD SHAWNEETOWN
GUTTER LOCATION



*/** VARIABLE DEPTH HMA SURFACE REMOVAL WILL BE PAID FOR AS HMA SURFACE REMOVAL 2 3/4"

DRAWN	07-11-24
REVISED	
REVISED	
REVISED	

ILLINOIS STANDARD ROUGH GROOVED SURFACE SIGN



COLORS

LEGEND AND BORDER- BLACK NON-REFLECTORIZED
BACKGROUND- ORANGE REFLECTORIZED

SIGN SIZE	DIMENSIONS							
	A	B	C	D	E	F	G	H
48X48	48.0	24.1	3.0	34.0	33.0	6.0	13.0	3.5

SIGN SIZE	SERIES LINES			MAR-GIN	BOR-DER	BLANK STD.
	1	2	3			
48X48	7C	7C	7C	0.8	1.2	B4-48D

ALL DIMENSIONS IN INCHES

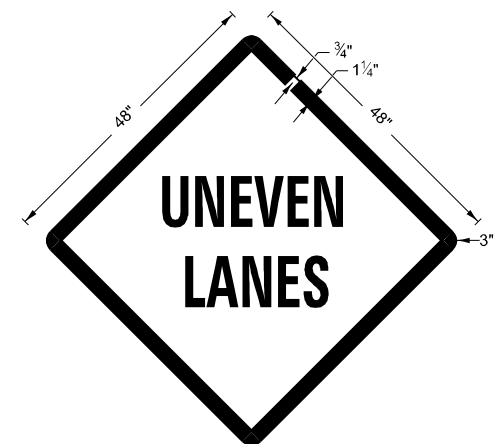
NOTES

PRIOR TO ALLOWING TRAFFIC ON ANY PORTION OF THE ROADWAY THAT HAS BEEN COLDMILLED, THE CONTRACTOR SHALL HAVE ERECTED "ROUGH GROOVED SURFACE" SIGNS THAT CONFORM TO THE ABOVE DETAILS. A MINIMUM OF ONE SIGN AT EACH END OF THE IMPROVEMENT WILL BE REQUIRED. THE CONTRACTOR SHALL MAINTAIN THE "ROUGH GROOVED SURFACE" SIGNS UNTIL THE COLDMILLED SURFACE IS COVERED WITH LEVELING BINDER OR SURFACE COURSE.

IF AT ANY TIME THE SIGNS ARE IN PLACE BUT NOT APPLICABLE, THEY SHALL BE TURNED FROM THE VIEW OF MOTORISTS OR COVERED AS DIRECTED BY THE ENGINEER.

THE COST OF FURNISHING, ERECTING, MAINTAINING, AND REMOVING THE REQUIRED SIGNS SHALL BE INCLUDED IN THE CONTRACT.

UNEVEN LANES SIGN W8-11 (48" X 48")



COLORS:

LEGEND AND BORDER - BLACK NON-REFLECTORIZED
BACKGROUND - ORANGE REFLECTORIZED

NOTE: PRIOR TO ALLOWING TRAFFIC ON ANY PORTION OF THE ROADWAY THAT HAS BEEN COLDMILLED OR BEFORE RESURFACING OPERATIONS BEGIN, THE CONTRACTOR SHALL HAVE ERECTED "UNEVEN PAVEMENT" SIGNS THAT CONFORM TO THE ABOVE DETAILS. A MINIMUM OF ONE SIGN AT EACH END OF THE IMPROVEMENT WILL BE REQUIRED. THE CONTRACTOR SHALL MAINTAIN THE "UNEVEN PAVEMENT" SIGNS UNTIL THE RESURFACING OPERATIONS ARE COMPLETED.

IF AT ANY TIME THE SIGNS ARE IN PLACE BUT NOT APPLICABLE, THEY SHALL BE TURNED FROM THE VIEW OF MOTORISTS OR COVERED AS DIRECTED BY THE ENGINEER.

THE COST OF FURNISHING, ERECTING, MAINTAINING, AND REMOVING THE REQUIRED SIGNS SHALL BE INCLUDED IN THE CONTRACT.

DRAWN	02-15-89
REVISED	03-27-08
REVISED	10-21-21
REVISED	05-27-22

DRAWN	02-15-89
REVISED	05-08-08
REVISED	10-21-21
REVISED	05-27-22

STD. 9-23

STD. 9-24

USER NAME = robert.handy	DESIGNED -	REVISED -
	DRAWN -	REVISED -
PLOT SCALE = 0.16666633 / in.	CHECKED -	REVISED -
PLOT DATE = 8/15/2024	DATE -	REVISED -

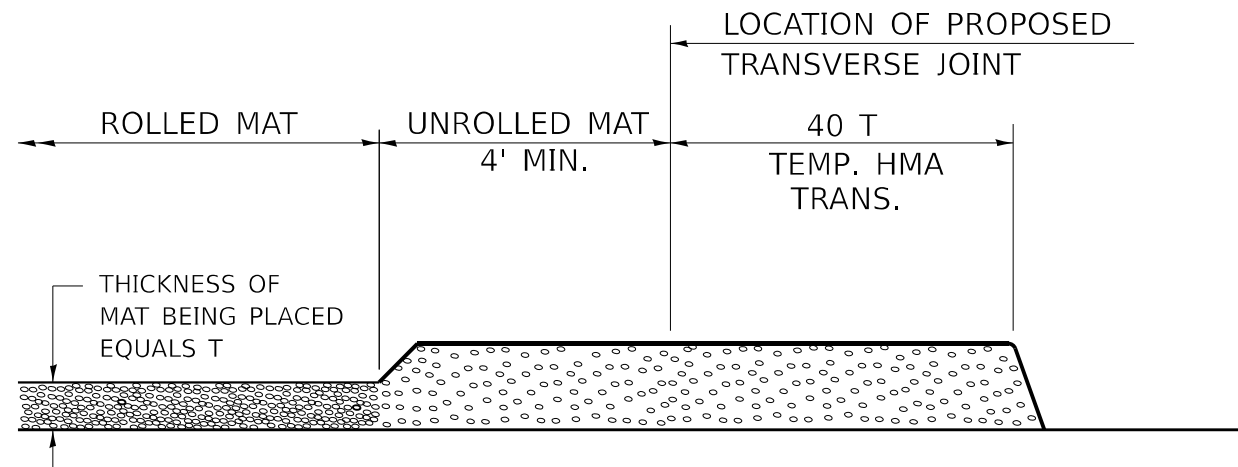
STATE OF ILLINOIS
DEPARTMENT OF TRANSPORTATION

PAVEMENT TRANSITION DETAIL
ROUGH GROOVE SURFACE & UNEVEN LANES DETAILS

SCALE: SHEET OF SHEETS STA. TO STA.

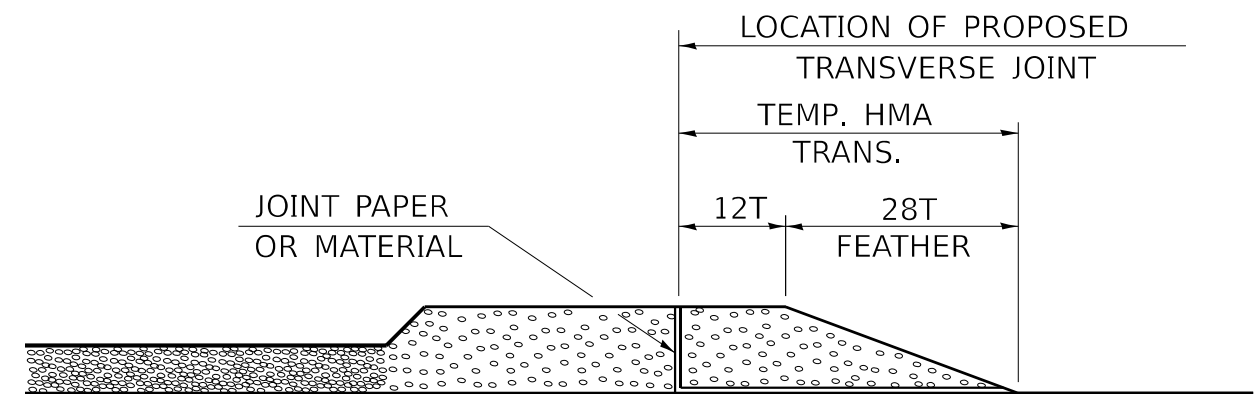
F.A.P. RTE.	SECTION	COUNTY	TOTAL SHEETS	SHEET NO.
331	(12.11.11-1)RS-2	GALLATIN	31	30
CONTRACT NO. 78A67				
ILLINOIS FED. AID PROJECT				

TEMPORARY HOT-MIX ASPHALT TRANSITIONS



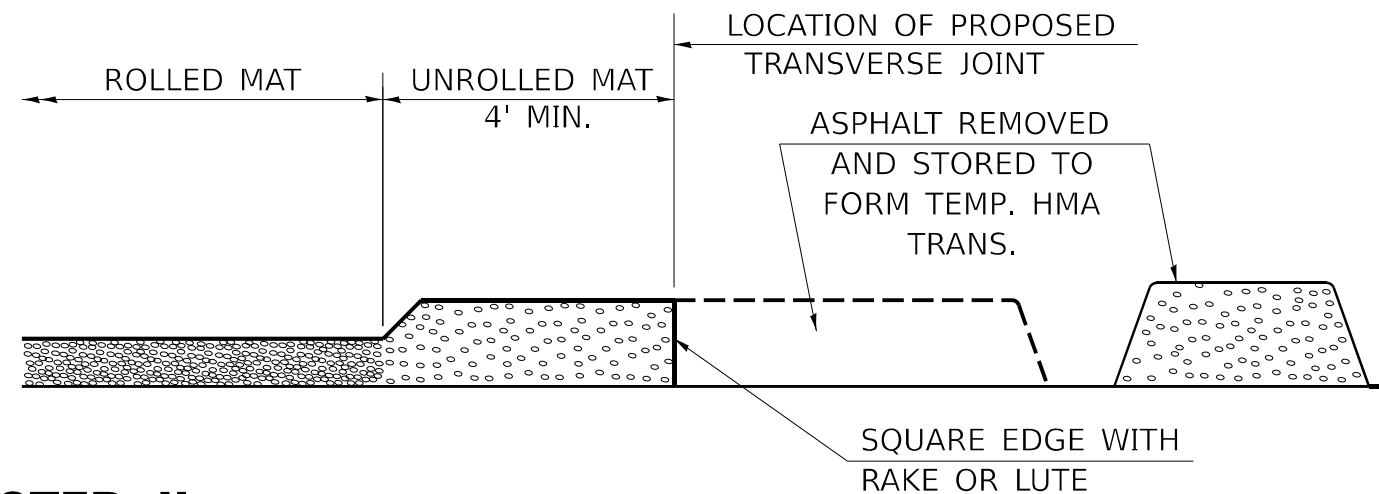
STEP I

1. PLACE HOT-MIX ASPHALT MAT, LENGTH 40 TIMES THE THICKNESS OF THE MAT BEING PLACED PAST THE PROPOSED TRANSVERSE JOINT LOCATION USING NORMAL OPERATING PROCEDURES.
2. EXTREME CARE SHOULD BE TAKEN TO MAINTAIN ENOUGH MATERIAL IN FRONT OF THE SCREED TO MAINTAIN REQUIRED PAVING DEPTH.



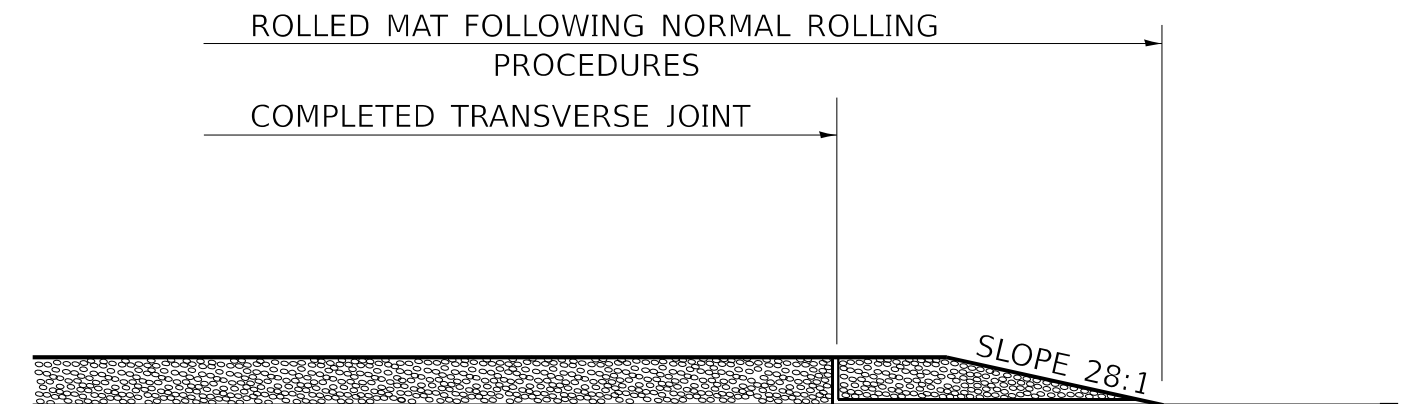
STEP III

1. JOINT PAPER OR OTHER PRESELECTED JOINT MATERIAL IS THEN PLACED IN THE CLEARED AREA AND THE EXCESS ASPHALT USED TO HAND FORM A TRANSITION TO THE DIMENSIONS SHOWN ABOVE.
2. NOTE THAT IN CONSTRUCTING THE TRANSITION, THE MAT DEPTH IS CONTINUED AS PART OF THE TRANSITION BEFORE FORMING THE FEATHER.



STEP II

1. MOVE THE PAVER OUT OF THE WAY AND REMOVE THE ASPHALT FROM THE AREA OF THE PROPOSED TEMPORARY HOT-MIX ASPHALT TRANSITION.
2. SQUARE UP THE END OF THE MAT WITH A RAKE OR LUTE.
3. NOTE THAT THE MAT WITHIN 4' OF THE END OF JOINT IS NOT TO BE ROLLED AT THIS TIME.



STEP IV

1. COMPLETE TEMPORARY TRANSITION BY ROLLING.
2. TO RESUME PAVING, AT THE JOINT, REMOVE TEMPORARY TRANSITION AND DISPOSE OF THE MATERIAL ACCORDING TO ART. 202.03 OF THE STD. SPECS. (COST INCLUDED IN THE CONTRACT).
3. CONSTRUCTING THE TEMPORARY TRANSITIONS WILL NOT BE PAID FOR SEPARATELY IN ACCORDANCE WITH ARTICLE 406.14 OF THE STANDARD SPECIFICATIONS.

REVISIONS

REDRAWN	2-15-89
REVISED	8-16-94
REVISED	01-09-07
RESIZED	05-8-08
REVISED	05-16-13
REVISED	10-21-21

STD. 9-26

MODEL: Temporary HMA Transitions.dwg
FILE NAME: P:\Projects\2024\78A67\DOT\Documents\DOT Office\Direct\BOPED\Project\78A67\CAD\Drawings\DOT\78A67-SHE-Chart.dwg

USER NAME = robert.handy	DESIGNED -	REVISED -
PLOT SCALE = 0.16666633' / in.	DRAWN -	REVISED -
PLOT DATE = 8/15/2024	CHECKED -	REVISED -
	DATE -	REVISED -

STATE OF ILLINOIS
DEPARTMENT OF TRANSPORTATION

TEMPORARY HOT MIX ASPHALT TRANSITIONS

SCALE: SHEET OF SHEETS STA. TO STA.

F.A.P. RTE.	SECTION	COUNTY	TOTAL SHEETS	SHEET NO.
331	(10.11.11-1)RS-2	GALLATIN	31	31
CONTRACT NO. 78A67				
ILLINOIS FED. AID PROJECT				