

D.M. 1/2 vertical leg 3" x 3" on top of fence post  
 400' ± E. 310' 189' ± 50 Elev. 698.92

STATE OF ILLINOIS  
 DEPARTMENT OF PUBLIC WORKS & BUILDINGS  
 DIVISION OF HIGHWAYS



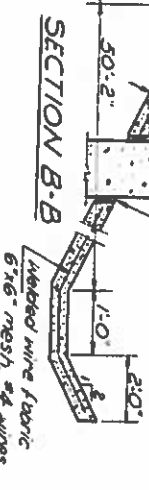
Sheet No.	72-3	Sheet	46	Sheet No.	1/3
Project No.	HA 116	Project	HA 116	Project	HA 116

GENERAL NOTES

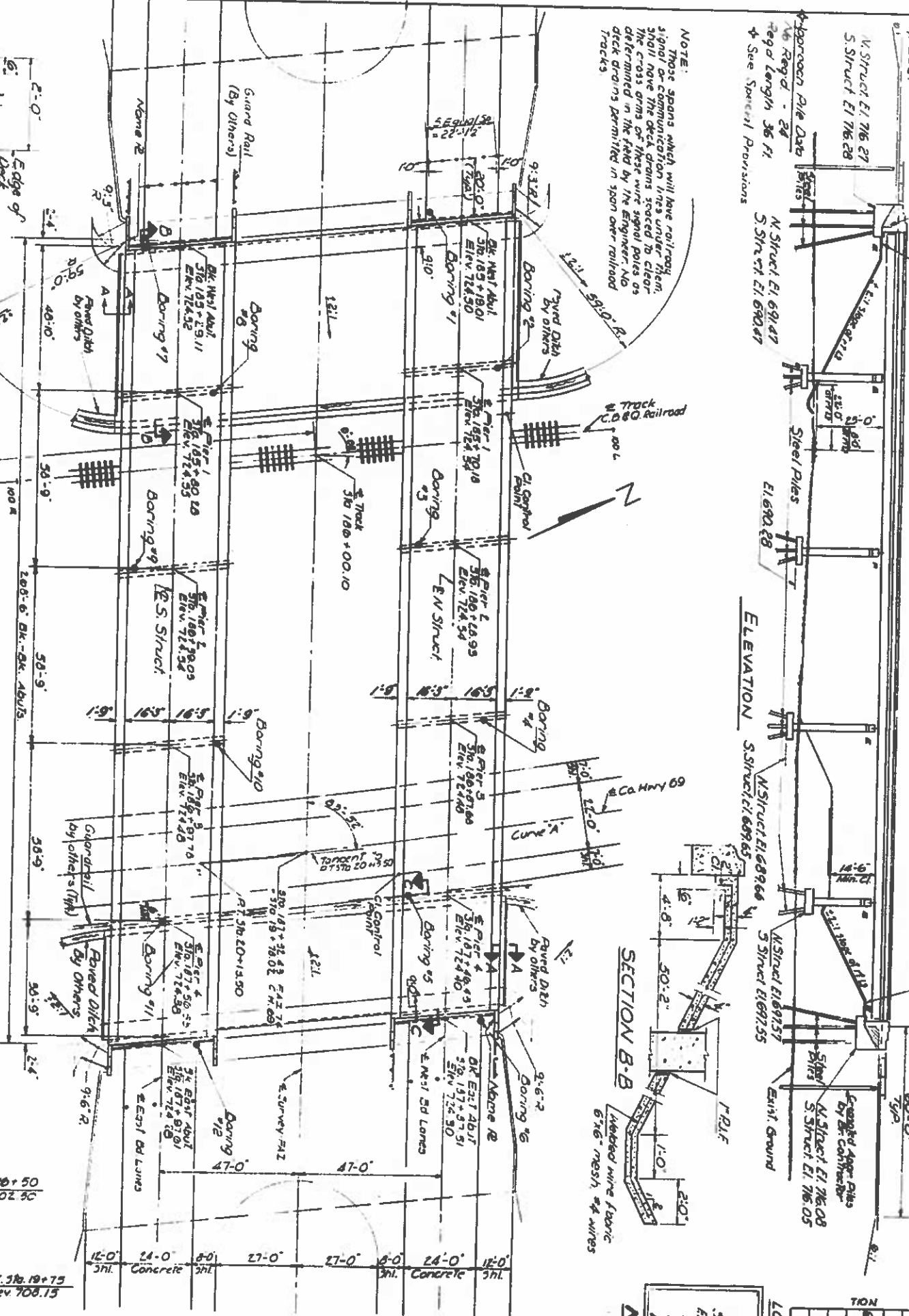
Class X Concrete shall be used throughout.  
 Coarse aggregate to be used in parapet handrails and end post must be absolutely free of chem. film, lignite, lignite and soft sandstone.  
 The concrete floor slab shall be finished in accordance with Art. 51.19 of the Standard Specifications.  
 Slope wall shall be reinforced with welded wire fabric 6" x 6" mesh, #4 wires, weight 9.588 per 100 sq. ft.  
 All reinforcement bars shall be lapped 20 dia. unless otherwise shown.  
 Rivets 3/4" Open holes 1 1/2" unless otherwise noted.  
 Anchor bolts shall be set before riveting diaphragms over supports.  
 The exposed surfaces of the expansion guards shall be given two shop coats of red lead paint, the contact surfaces shall be given one coat of red lead paint.  
 Anchor steel shall not be painted.  
 Spans on girders one included in the quantity of Struct. Steel. Est weight 3350 lbs.  
 Excelsior - The wise provided, all struct. steel shall receive one shop coat of red lead paint and two field coats of paint. See Special Provisions for field paint.

NAME PLATE  
 (See Art. 213.)

C.A.G.R.R. BY  
 BUILT 1966 BY  
 STATE OF ILLINOIS  
 FAI RT 74 SEC. 72-3HVB  
 STA. 186+00.10



NOTE:  
 Those spans which will have railway signal or communication lines under them, shall have the deck drains spaced to clear the cross arms of these wire signal poles as determined in the field by the Engineer. No deck drains permitted in span over railroad tracks.

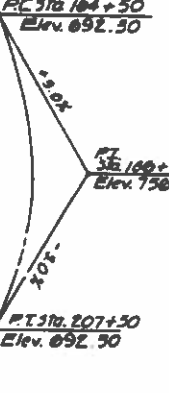
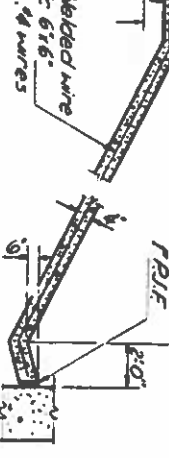
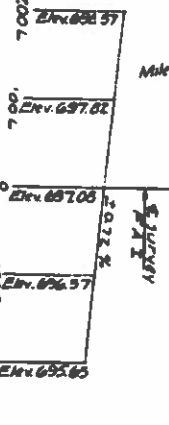


PLAN

SEC. A-A



DESIGNED	J. J. Bourke
CHECKED	A. L. M. F. C.
DRAWN	A. Borrozo
CHECKED	W. J.



CURVE "A"

PI - 18+11.53
A = 20° 25'
D = 5-00'
T = 206.96'
R = 1145.92'
L = 406.93'
SE = 10.45'
TE = 0.081'
TL = 216.0'

TOTAL BILL OF MATERIAL

Item	Quantity	Unit	Value
Class X Concrete	315	cu yd	315
Class X Concrete	342.6	cu yd	1159.5
Protective Coat	94.58	sq yd	24.5
Structural Steel	463.060	lbs	463.060
Aluminum Handrail	106.1	lin. ft.	106.1
Reinforcement Bars	148,300	sq ft	20,120
Expanded Piles	106.1	lin. ft.	429.5
Steel Piles (240236)	106.1	lin. ft.	429.5
Aluminum Plates	3	sq. yd.	2
Slope Wall (87)	1599	sq. yd.	1599
Bridge Steel Joists		lin. ft.	

Includes inside vertical face, top and exposed end of abutment wings.  
 Includes excavation for slope wall.  
 as Applied or Abutments.

DESIGN STRESSES

fc = 4000 psi (Super. 8500)  
 fs = 20,000 psi (Struct.)  
 fs = 20,000 psi (Struc.)  
 W = 35 psi (F.W.)  
 W = 10 psi (F.W.)

GENERAL PLAN & ELEVATION

FAI 74 OVER C&G R.R. PRELOC. CH. 69  
 FAI RT 74 SEC. 72-3HVB

PEORIA COUNTY

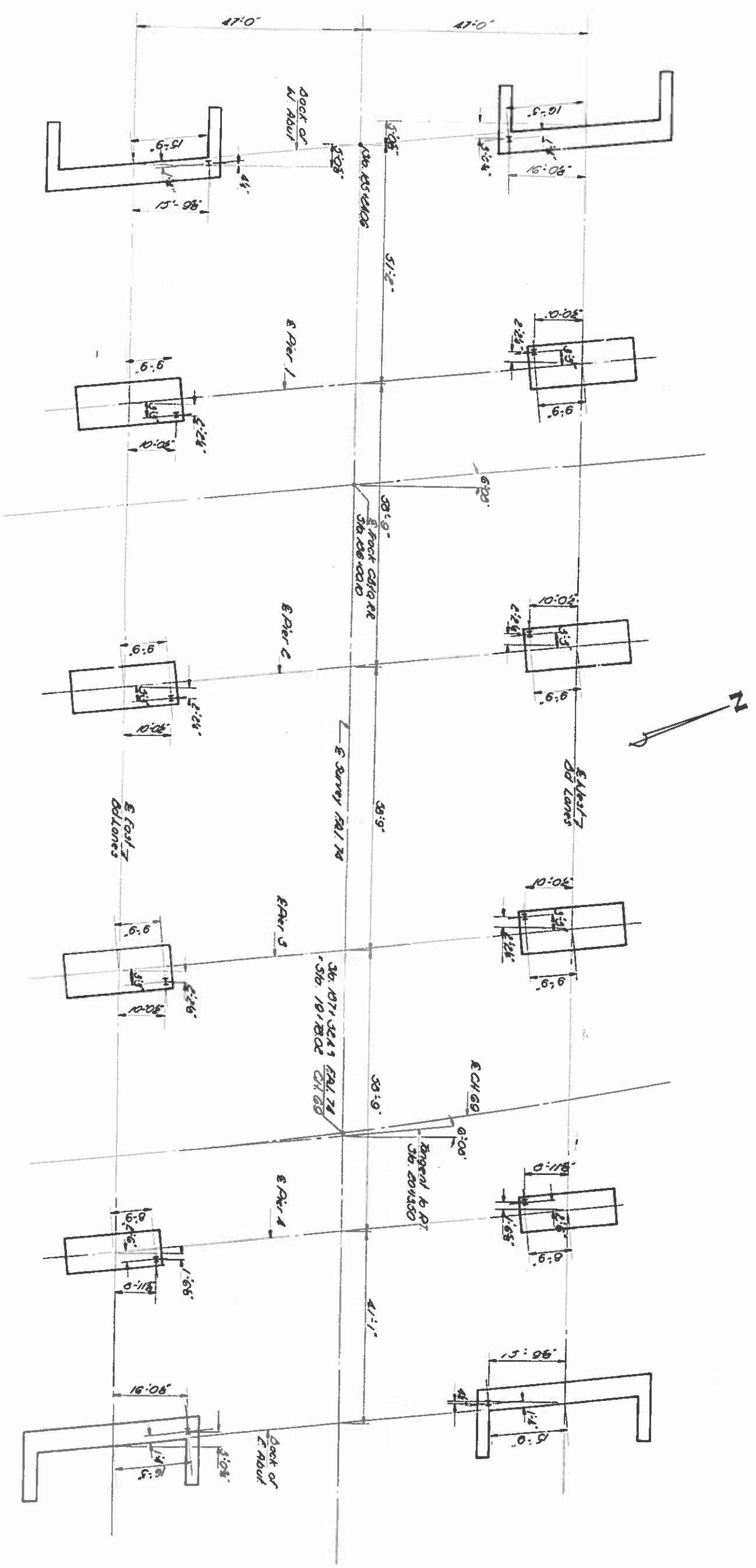
LOADING H320-44&LT

Revised 1/20/66: Slope wall profile, altered Super. Exc. 1  
 Revised By Others: in CH of embankment, D.E.S.  
 By 1-26-67 DGS changed grade of Abutment 2, changed quantities of Class X Conc. from 374.4 to 612.9-1106.5 to 542.6 - CIG: 1-11593 (4/5/67) Reel Data from 14,050-5810-185,640 to 49,380-51,000-201,120 lbs.

STATE OF ILLINOIS  
DEPARTMENT OF PUBLIC WORKS & BUILDINGS  
DIVISION OF HIGHWAYS

DATE	BY	NO.	REVISION
12-13	PLR:ms	416	DA
12-13	PLR:ms	416	DA

SHEET NO. 10  
/ 3 SHEETS



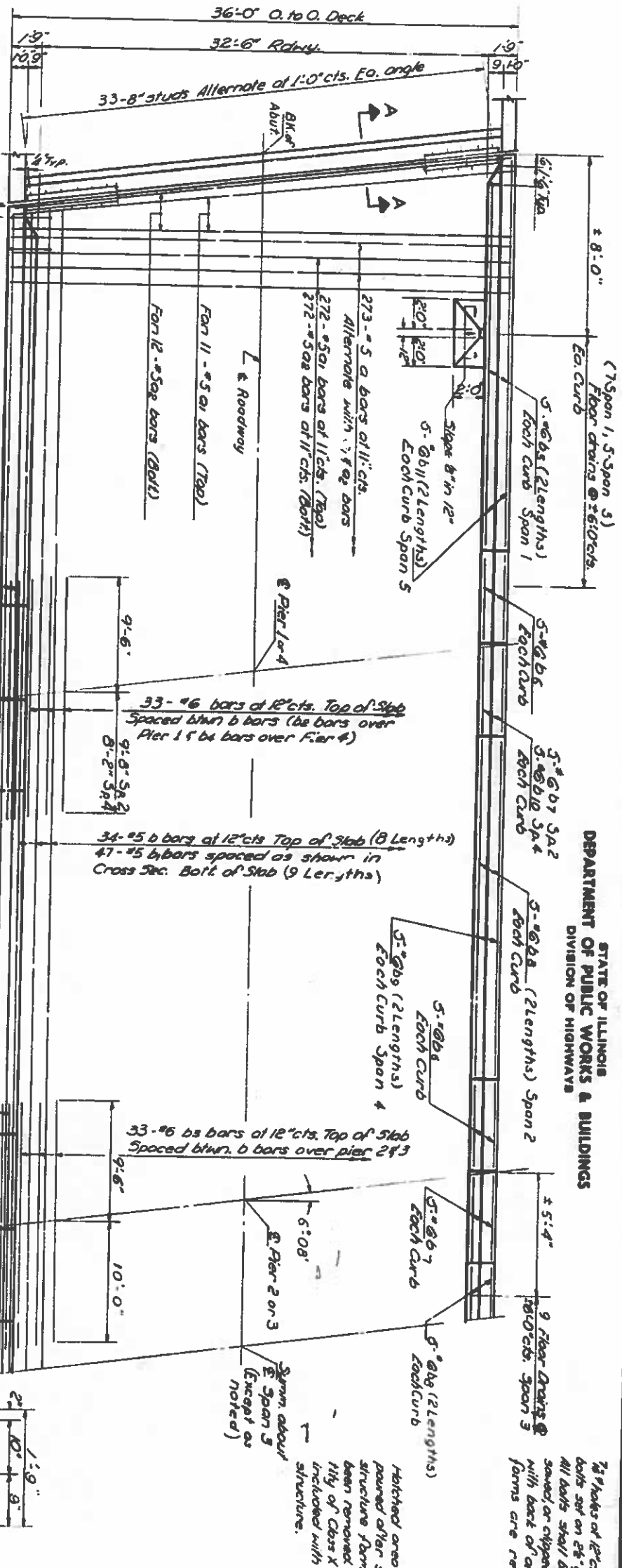
DESIGNED	<i>De Haven</i>
CHECKED	R.D. Parcell
DRAWN	<i>De Haven</i>
CHECKED	R.D.P.

FOUNDATION LAYOUT  
PARCEL 74 SEC. 7E-34NS  
AFARIA COUNTY  
SIR. BRIGAD

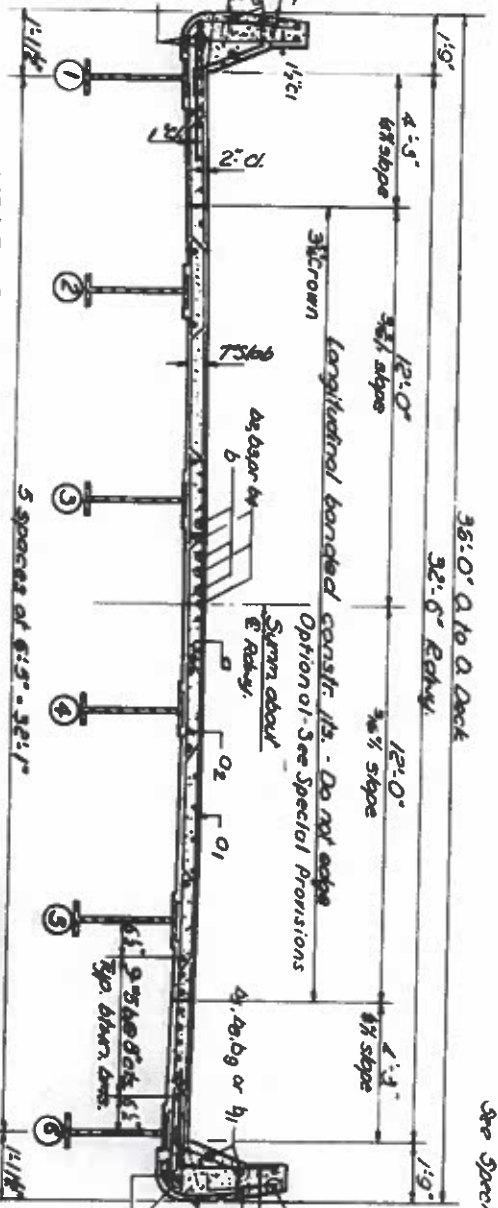


STATE OF ILLINOIS  
DEPARTMENT OF PUBLIC WORKS & BUILDINGS  
DIVISION OF HIGHWAYS

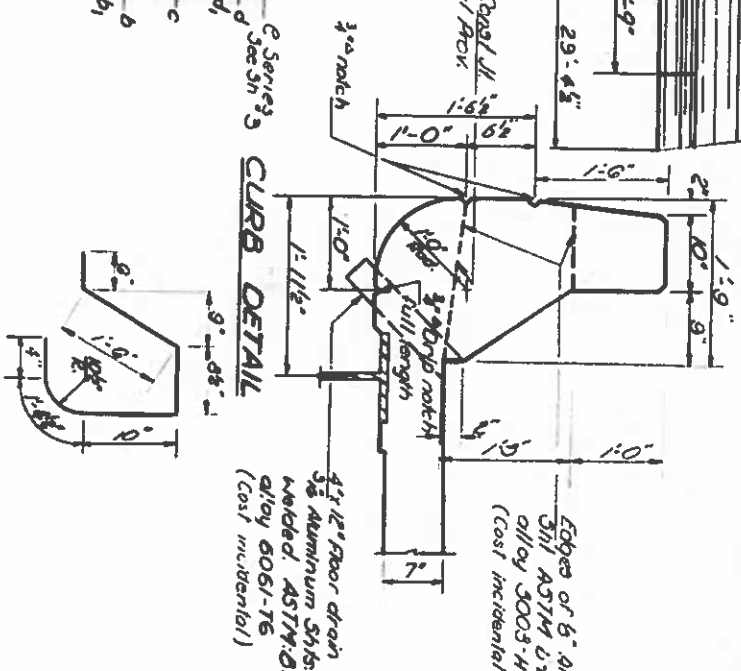
Sheet No.	1/3 SHEETS
Project No.	72-3
Location	Peoria
Stationing	46 9
Scale	1/32" = 1'-0"



HALF PLAN



CROSS SECTION



CURB DETAIL

BAR C

BAR D

2 SUPERSTRUCTURES  
BILL OF MATERIAL

Bar No.	Size	Length	Shape
1	5/8"	33'-3"	—
2	5/8"	33'-3"	—
3	5/8"	33'-3"	—
4	5/8"	33'-3"	—
5	5/8"	33'-3"	—
6	5/8"	33'-3"	—
7	5/8"	33'-3"	—
8	5/8"	33'-3"	—
9	5/8"	33'-3"	—
10	5/8"	33'-3"	—
11	5/8"	33'-3"	—
12	5/8"	33'-3"	—
13	5/8"	33'-3"	—
14	5/8"	33'-3"	—
15	5/8"	33'-3"	—
16	5/8"	33'-3"	—
17	5/8"	33'-3"	—
18	5/8"	33'-3"	—
19	5/8"	33'-3"	—
20	5/8"	33'-3"	—
21	5/8"	33'-3"	—
22	5/8"	33'-3"	—
23	5/8"	33'-3"	—
24	5/8"	33'-3"	—
25	5/8"	33'-3"	—
26	5/8"	33'-3"	—
27	5/8"	33'-3"	—
28	5/8"	33'-3"	—
29	5/8"	33'-3"	—
30	5/8"	33'-3"	—
31	5/8"	33'-3"	—
32	5/8"	33'-3"	—
33	5/8"	33'-3"	—
34	5/8"	33'-3"	—
35	5/8"	33'-3"	—
36	5/8"	33'-3"	—
37	5/8"	33'-3"	—
38	5/8"	33'-3"	—
39	5/8"	33'-3"	—
40	5/8"	33'-3"	—
41	5/8"	33'-3"	—
42	5/8"	33'-3"	—
43	5/8"	33'-3"	—
44	5/8"	33'-3"	—
45	5/8"	33'-3"	—
46	5/8"	33'-3"	—
47	5/8"	33'-3"	—
48	5/8"	33'-3"	—
49	5/8"	33'-3"	—
50	5/8"	33'-3"	—
51	5/8"	33'-3"	—
52	5/8"	33'-3"	—
53	5/8"	33'-3"	—
54	5/8"	33'-3"	—
55	5/8"	33'-3"	—
56	5/8"	33'-3"	—
57	5/8"	33'-3"	—
58	5/8"	33'-3"	—
59	5/8"	33'-3"	—
60	5/8"	33'-3"	—
61	5/8"	33'-3"	—
62	5/8"	33'-3"	—
63	5/8"	33'-3"	—
64	5/8"	33'-3"	—
65	5/8"	33'-3"	—
66	5/8"	33'-3"	—
67	5/8"	33'-3"	—
68	5/8"	33'-3"	—
69	5/8"	33'-3"	—
70	5/8"	33'-3"	—
71	5/8"	33'-3"	—
72	5/8"	33'-3"	—
73	5/8"	33'-3"	—
74	5/8"	33'-3"	—
75	5/8"	33'-3"	—
76	5/8"	33'-3"	—
77	5/8"	33'-3"	—
78	5/8"	33'-3"	—
79	5/8"	33'-3"	—
80	5/8"	33'-3"	—
81	5/8"	33'-3"	—
82	5/8"	33'-3"	—
83	5/8"	33'-3"	—
84	5/8"	33'-3"	—
85	5/8"	33'-3"	—
86	5/8"	33'-3"	—
87	5/8"	33'-3"	—
88	5/8"	33'-3"	—
89	5/8"	33'-3"	—
90	5/8"	33'-3"	—
91	5/8"	33'-3"	—
92	5/8"	33'-3"	—
93	5/8"	33'-3"	—
94	5/8"	33'-3"	—
95	5/8"	33'-3"	—
96	5/8"	33'-3"	—
97	5/8"	33'-3"	—
98	5/8"	33'-3"	—
99	5/8"	33'-3"	—
100	5/8"	33'-3"	—

\* Weight of bearing assemblies with lead plates and anchor bolts are included as structural steel.  
Est. Weight = 20,170 Lbs.

SUPERSTRUCTURE  
FA1 RT 74 SEC. 72-3 HWB  
PEORIA COUNTY  
STA. 186+00.1

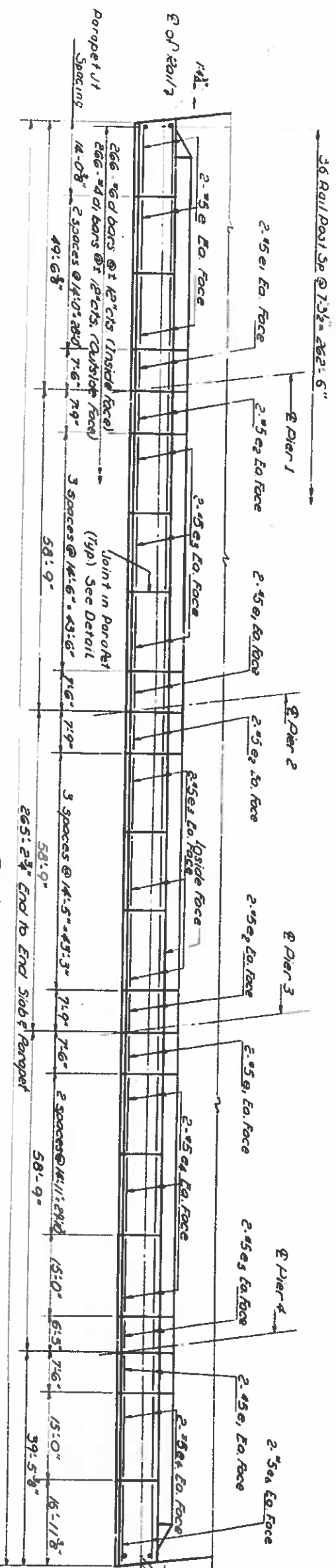
DESIGNED: *[Signature]*  
CHECKED: E. D. PATEL  
DRAWN: *[Signature]*  
CHECKED: *[Signature]*

EXAMINED: *[Signature]*  
PASSED: *[Signature]*  
APPROVED: *[Signature]*

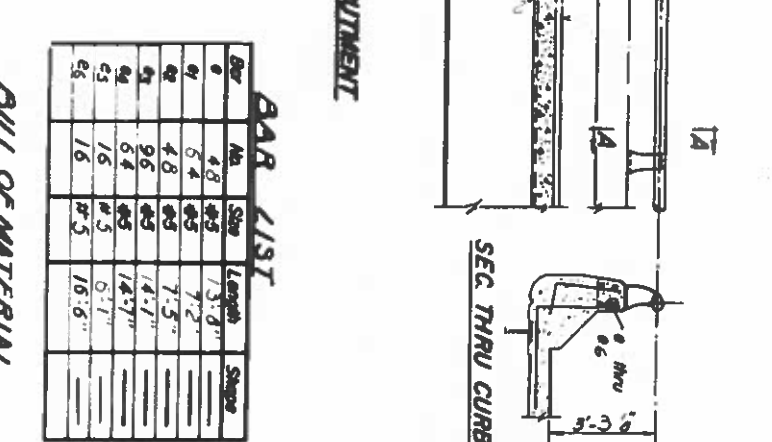
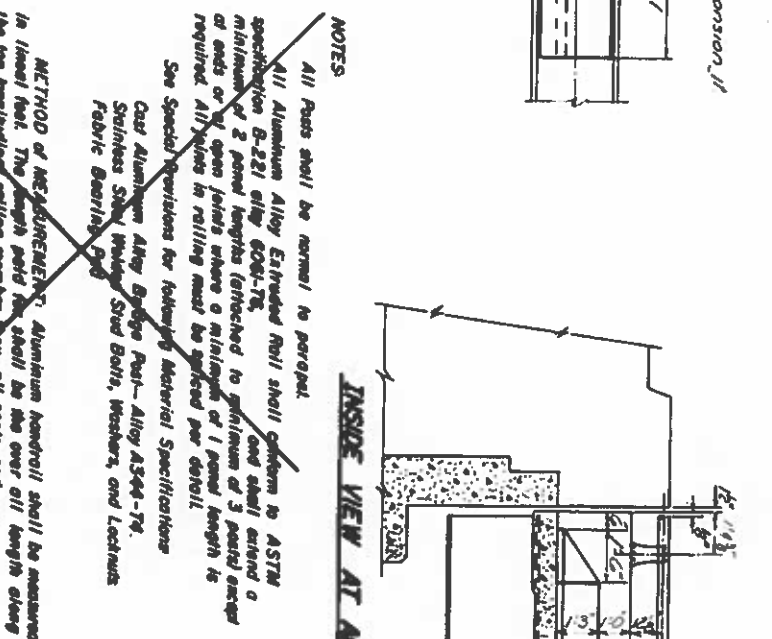
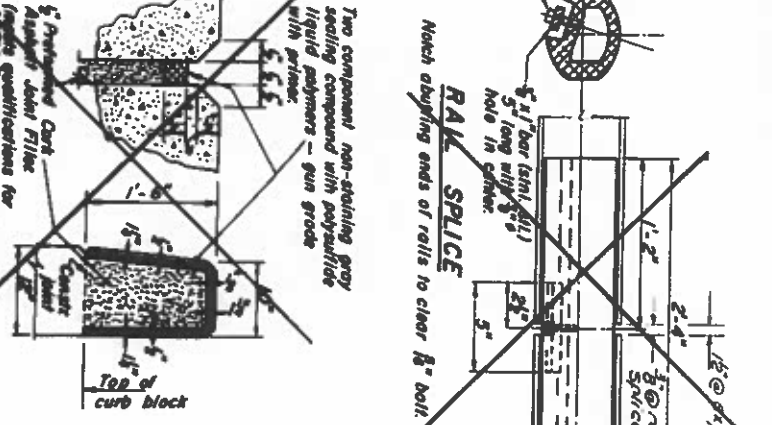
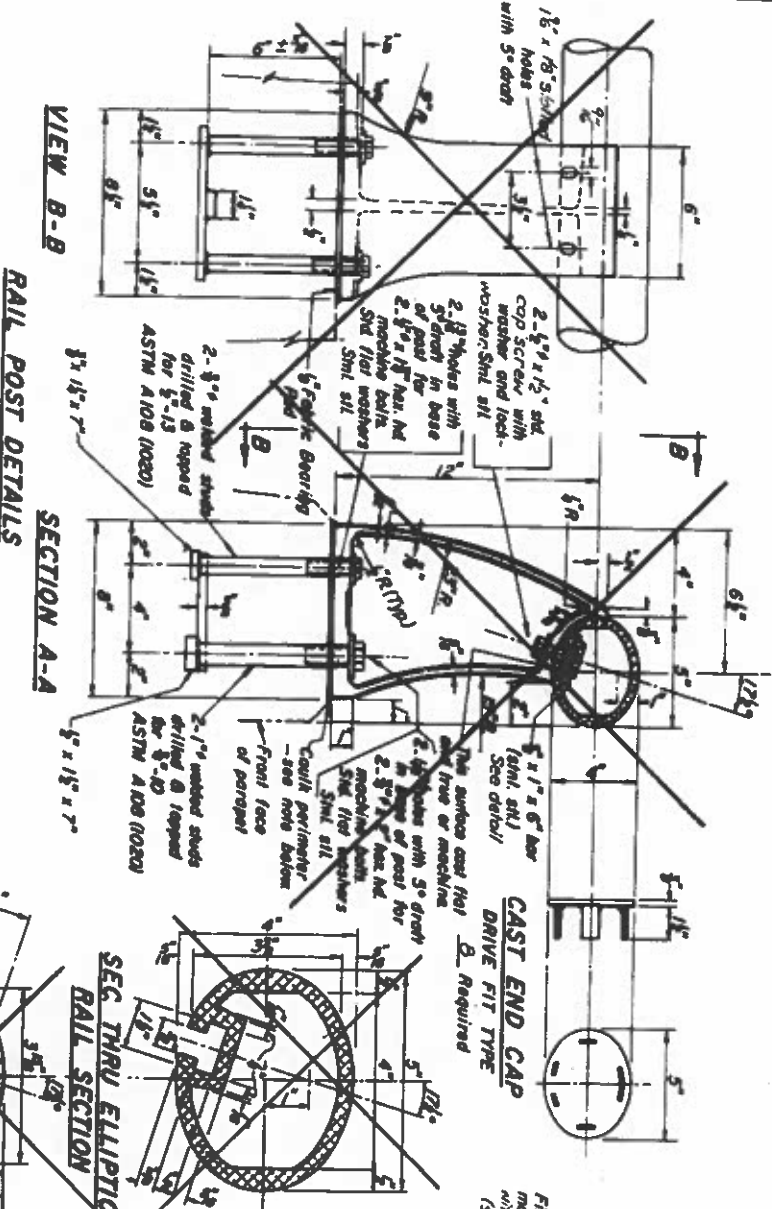
Revised 9-20-66: Chris X-Line property; Detail of Aluminum Sheet in Curb Joint. D.E.S.  
Rev. 7-26-67 Changed to spaced parapet base. Quantity of Reinforcing Bars changed from 187,540 lbs to 189,200 lbs; Class I changed from 5444 cwt to 5484 cwt. D.E.S.

STATE OF ILLINOIS  
DEPARTMENT OF PUBLIC WORKS & BUILDINGS  
DIVISION OF HIGHWAYS

DESIGN NO.	72-3	PROJECT NO.	46	SHEET NO.	3
REV.	HYB				1/3 SHEETS



PLAN  
Showing 5 Parapet & Rail Posts  
(N Parapet & Rail Posts some)



**BAR LIST**

Bar	No.	Size	Length	Splice
1	4	#5	13'-0"	
2	4	#5	7'-2"	
3	4	#5	7'-5"	
4	9	#5	14'-1"	
5	6	#5	14'-7"	
6	16	#5	6'-1"	
7	16	#5	16'-6"	

**BILL OF MATERIAL**  
Aluminum Handrail 72-3  
ALUMINUM HANDRAIL  
FAIRBURY SEC. 72-3HYD  
PEORIA COUNTY  
STA. 186+00.1

**NOTES**  
All Posts shall be normal to parapet.  
All Aluminum Alloy Extruded Rail shall conform to ASTM specification B-221 alloy 6061-T6 and shall extend a minimum of 2 panel lengths (attached to grillwork at 3 panel length at ends or at open joints where a minimum of 1 panel length is required. All joints in railing must be grouted per detail.  
See Special Provisions for following Material Specifications:  
Cast Aluminum Alloy Bridge Post— Alloy A394-T4.  
Stainless Steel Washers, Stud Bolts, Washers, and Locknuts.  
Fabric Bearings.

Two component non-staining grey sealing compound with polysulfide liquid polymers— gun grade  
Sealing compound to be applied to parapet with two component non-staining grey sealing compound with polysulfide liquid polymers— gun grade with primer.  
Sealing compound to be applied to parapet with two component non-staining grey sealing compound with polysulfide liquid polymers— gun grade with primer.

**RAIL SPLICE**  
Sealing compound to be applied to rail splice.

**SEC THRU ELLIPTICAL RAIL SECTION**  
Sealing compound to be applied to rail section.

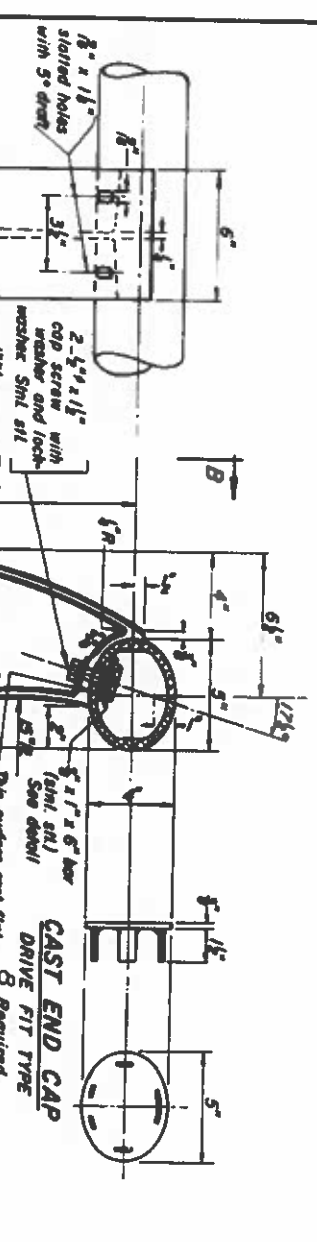
**RAIL POST DETAILS**  
Sealing compound to be applied to parapet with two component non-staining grey sealing compound with polysulfide liquid polymers— gun grade with primer.

**DESIGNED** R. D. Papp  
**CHECKED** R. D. Papp  
**DRAWN** M. M. Papp  
**CHECKED** M. M. Papp

R-17 Rev 10-8-65  
Rev 7-26-67  
Revised 5/23  
Removed Class X Concrete & Reinforced Bar Quantities D.C.S.

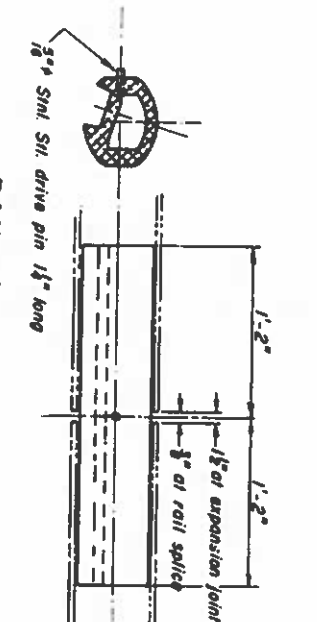
Quantity of Class X Concrete & Reinforced Bar in parapet & rail posts included with Superstructure. See SH #2  
See SH #30 for No. 1 Details

Note: For Plan see sheets 1, 2, 3, 4, 5.

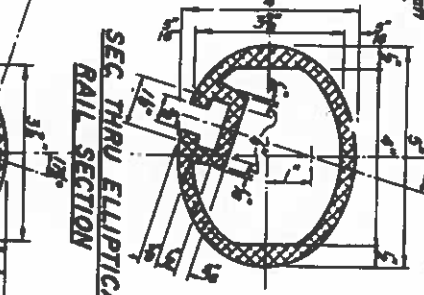


VIEW B-B  
SECTION A-A

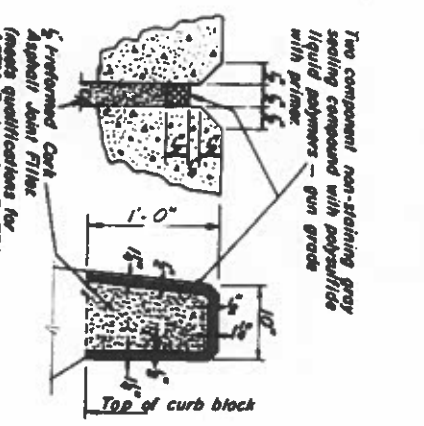
RAIL POST DETAILS



RAIL SPLICE

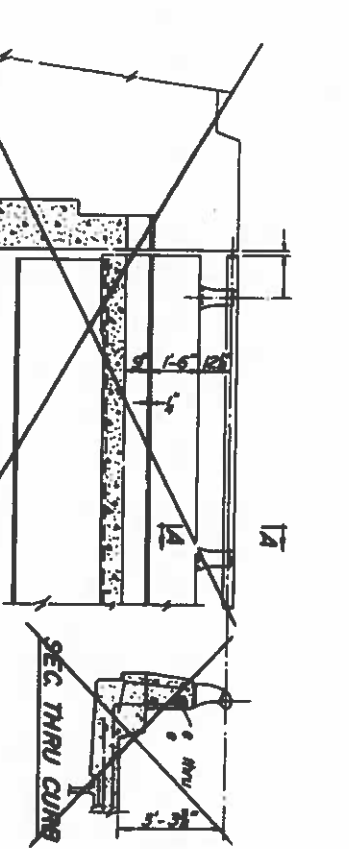


SEC. THRU ELLIPTICAL RAIL SECTION



PARAPET JOINT DETAIL

**NOTES:**  
All Posts shall be normal to parapet.  
All Aluminum Alloy Extruded Rail shall conform to ASTM specification B-221 alloy 6061-T6 and shall be supplied in modular lengths of 30 feet, except at the end of bridge or over span joints in bridge deck where the rail shall be attached to a minimum of 2 posts. If the rail is on a horizontal curve of 2500 foot radius or less, the modular lengths may be reduced but shall be attached to a minimum of 2 posts.  
All joints in rail shall be spliced per detail.  
See Special Provisions for following Material Specifications:  
Cast Aluminum Alloy Bridge Post—Alloy A344-T4.  
Stainless Steel Bolt, Cap Screws, Washers and Lockwashers  
Fabric Bearing Pad  
**METHOD OF MEASUREMENT:** Aluminum Handrail shall be measured in lineal feet. The length paid for shall be the over all length along the top longitudinal railing member thru all posts and gaps.  
**BASIS OF PAYMENT:** Aluminum Handrail shall be paid for at the contract unit price per lineal foot for ALUMINUM HANDRAIL, measured as specified, which price shall be payment in full for all materials, fabrication, transportation, and erection.  
Cost of rail splices, and caps, and hardware to be incidental to item ALUMINUM HANDRAIL.  
Provide 1- 1/2" and 2- 1/2" Aluminum Shims for 25% of the Posts. Rail element shall be parallel to Groove—high spots shall be ground, and low spots shinned.



INSIDE VIEW AT ABUTMENT

**PARAPETS & RAILS  
BILL OF MATERIAL**

Bar No.	Size	Length	Shape
1	4-5		
2	4-5		
3	4-5		
4	4-5		
5	4-5		
6	4-5		
7	4-5		
8	4-5		
9	4-5		
10	4-5		
11	4-5		
12	4-5		
13	4-5		
14	4-5		
15	4-5		
16	4-5		
17	4-5		
18	4-5		
19	4-5		
20	4-5		
21	4-5		
22	4-5		
23	4-5		
24	4-5		
25	4-5		
26	4-5		
27	4-5		
28	4-5		
29	4-5		
30	4-5		
31	4-5		
32	4-5		
33	4-5		
34	4-5		
35	4-5		
36	4-5		
37	4-5		
38	4-5		
39	4-5		
40	4-5		
41	4-5		
42	4-5		
43	4-5		
44	4-5		
45	4-5		
46	4-5		
47	4-5		
48	4-5		
49	4-5		
50	4-5		
51	4-5		
52	4-5		
53	4-5		
54	4-5		
55	4-5		
56	4-5		
57	4-5		
58	4-5		
59	4-5		
60	4-5		
61	4-5		
62	4-5		
63	4-5		
64	4-5		
65	4-5		
66	4-5		
67	4-5		
68	4-5		
69	4-5		
70	4-5		
71	4-5		
72	4-5		
73	4-5		
74	4-5		
75	4-5		
76	4-5		
77	4-5		
78	4-5		
79	4-5		
80	4-5		
81	4-5		
82	4-5		
83	4-5		
84	4-5		
85	4-5		
86	4-5		
87	4-5		
88	4-5		
89	4-5		
90	4-5		
91	4-5		
92	4-5		
93	4-5		
94	4-5		
95	4-5		
96	4-5		
97	4-5		
98	4-5		
99	4-5		
100	4-5		

ALUMINUM HANDRAIL  
FAJ RT 74 SEC. 72-3HYB  
PEORIA COUNTY  
STA. 106+00.1

DESIGNED: *[Signature]*  
CHECKED: S.D. PATEL  
DRAWN: M.M. BIRD  
CHECKED: *[Signature]*

EXAMINED: 10  
PASSED: *[Signature]*  
APPROVED: *[Signature]*

Note:  
Seal perimeter of base of post to parapet with two component non-staining grey sealing compound with polysulfide liquid polymers—gun grade with primer.

Slits must be 0 sliding fit in Rail Section

Two component non-staining grey sealing compound with polysulfide liquid polymers—gun grade with primer.

Performed Cast Asphalt Joint Filler (meets qualifications for ASTM Designation D 775) Cast Incidental

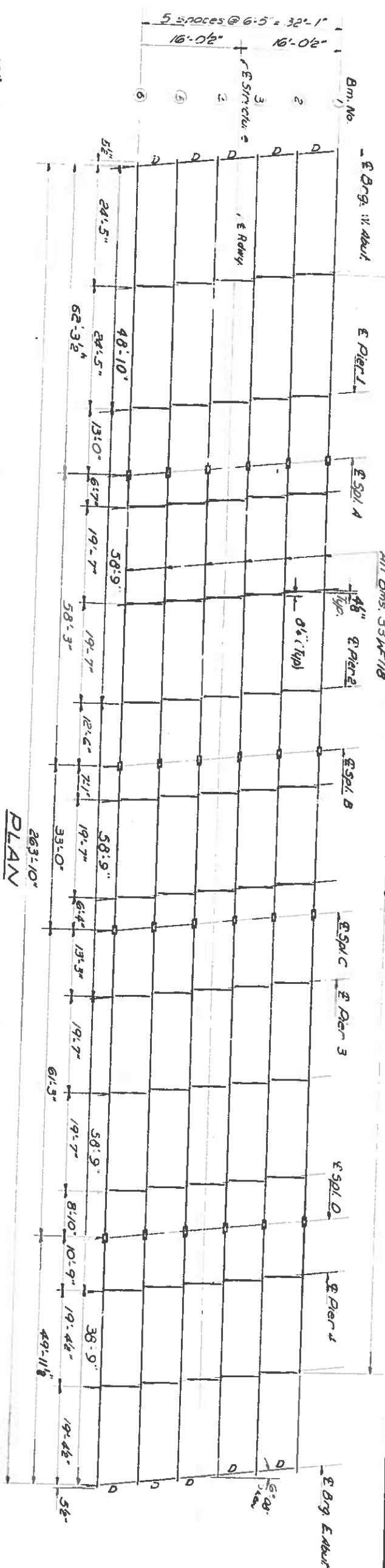
1" x 3/8" bar 6" lg. (incl. sh.) Drill & tap 2 holes 1/2" - 13

CLAMP BAR

R-17 11-18-66



STATE OF ILLINOIS  
DEPARTMENT OF PUBLIC WORKS & BUILDINGS  
DIVISION OF HIGHWAYS  
All Interior Diaphragms D,



Sheet No.	72-3	Revised	46	11
Project No.	186+00.1	Sheet	13	of 13

TOP OF BEAM ELEVATIONS

Beam No.	1	2	3	4	5	6
60' W.B.	723666	723771	723883	723883	723771	723666
50' W.B.	723551	723771	723881	723881	723771	723551
40' W.B.	723446	723771	723881	723881	723771	723446
30' W.B.	723331	723771	723881	723881	723771	723331
20' W.B.	723216	723771	723881	723881	723771	723216
10' W.B.	723101	723771	723881	723881	723771	723101

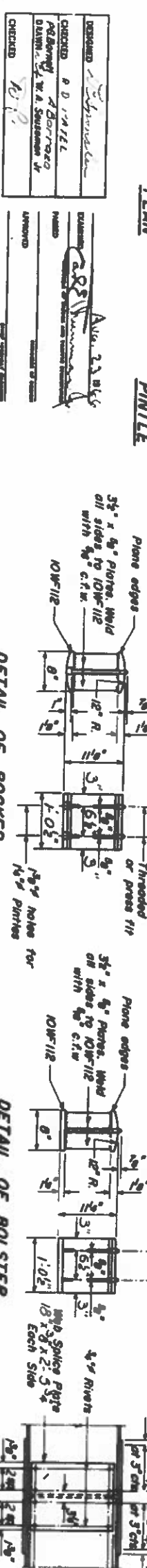
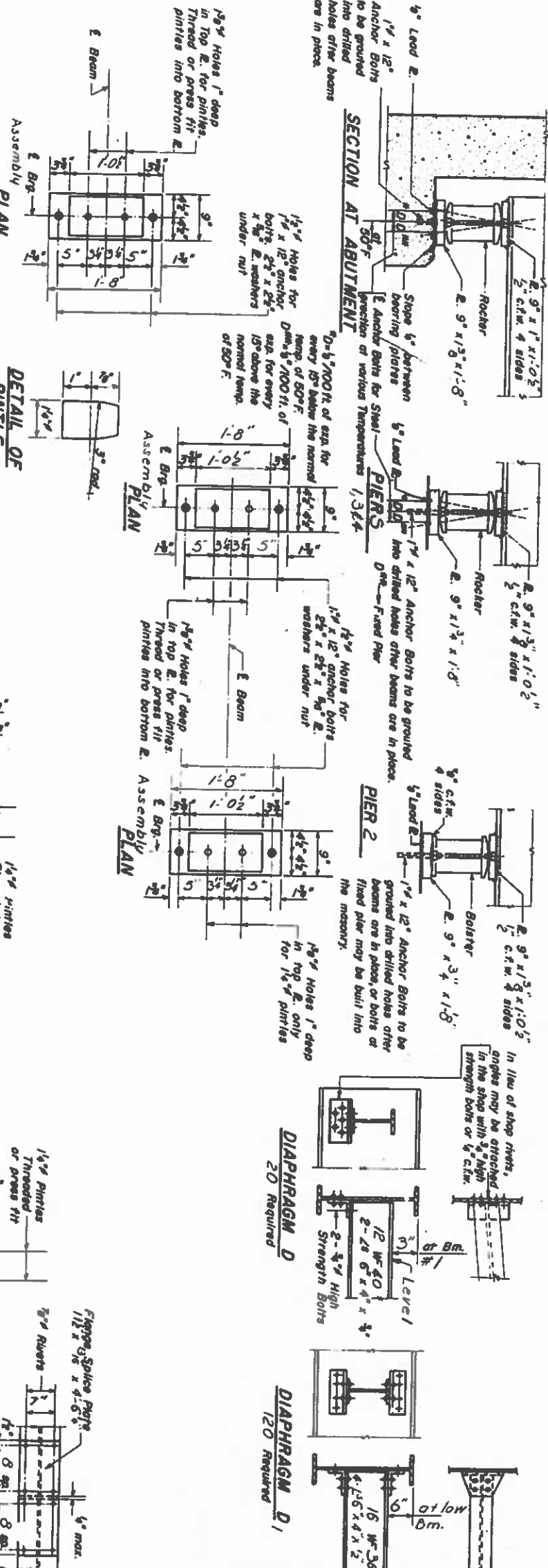


TABLE OF INT. BM. MOVEMENTS - 51 X.P.S.

Station	1	2	3	4	5	6
D.L.	153	268	120	257	46	72
L.L.	282	233	260	245	76	208
Imp.	82	75	66	66	74	60
Total	517	566	403	582	790	492

TABLE OF INT. BM. REACTIONS - K.O.S.

Station	1	2	3	4	5	6
D.L.	167	45	51	41.3	39.4	70
L.L.	32	8	4.1	5.2	4.3	34.6
Imp.	7.5	7.5	11.2	11.2	11.4	9.1
Total	206.7	60.5	66.3	57.5	55.1	113.7

I-2 7-2-62 Rev 11-9-62 Rev 8-16-63 Rev 12-16-63

STRUCTURAL STEEL  
FAIRFAX SEC. 72-3HV B  
PEORIA COUNTY  
STA. 186+00.1

STATE OF ILLINOIS  
DEPARTMENT OF PUBLIC WORKS & BUILDINGS  
DIVISION OF HIGHWAYS

Welded wire fabric 6x6 mesh, #4 wire #4 he bars. The cost of Class X core encasement and Reinf is incidental to the cost of furnishing piles - Elev D

Cross Hatched Area  
Quantity of Class X Conc. or back of Abut  
Included with Superstructure  
See Sheet #2

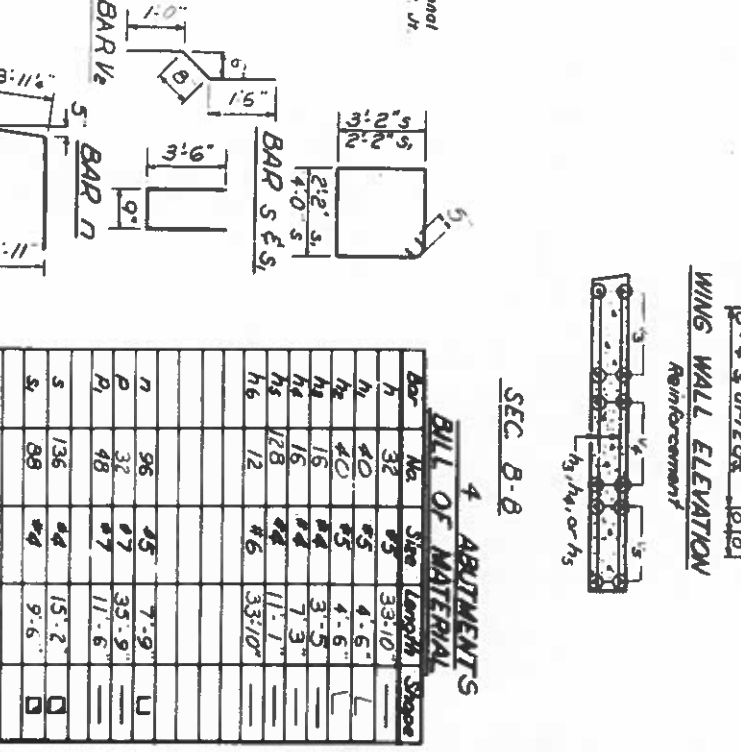
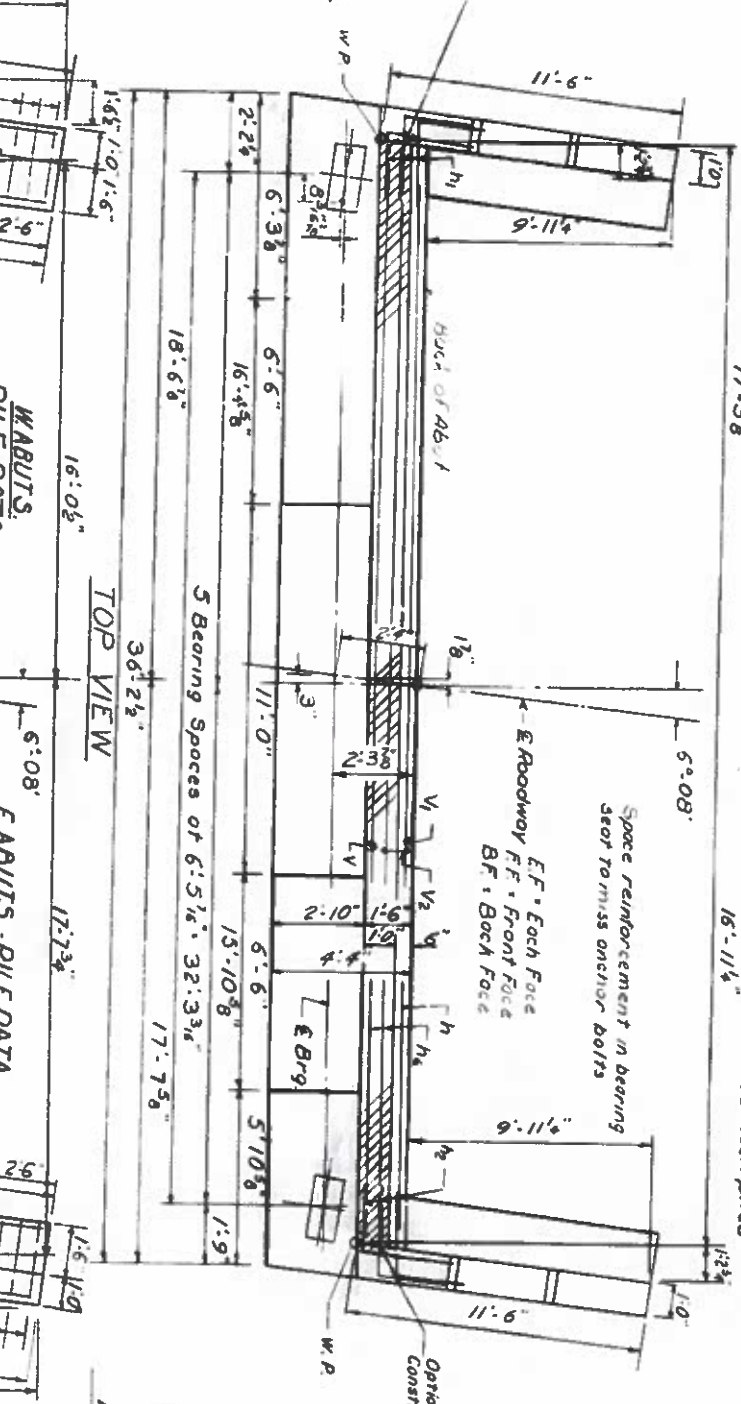
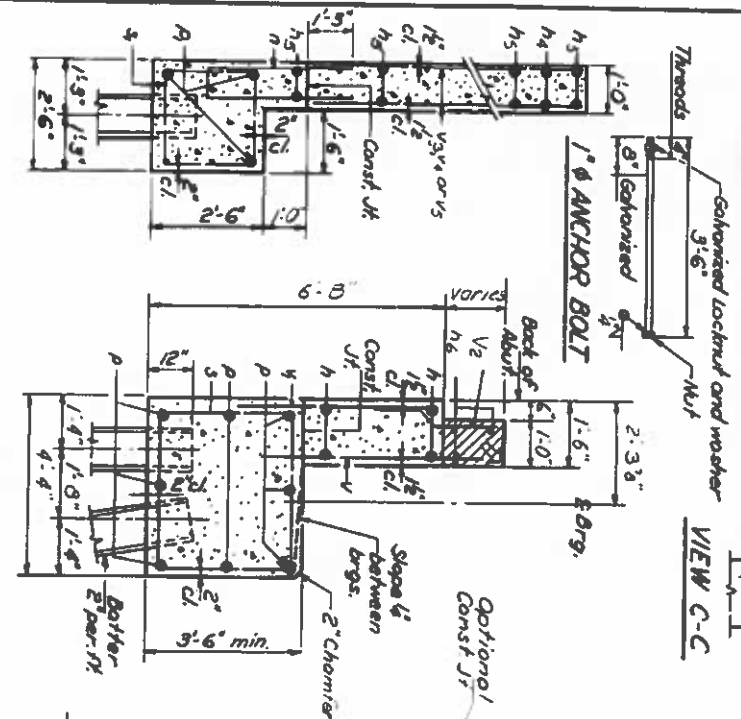
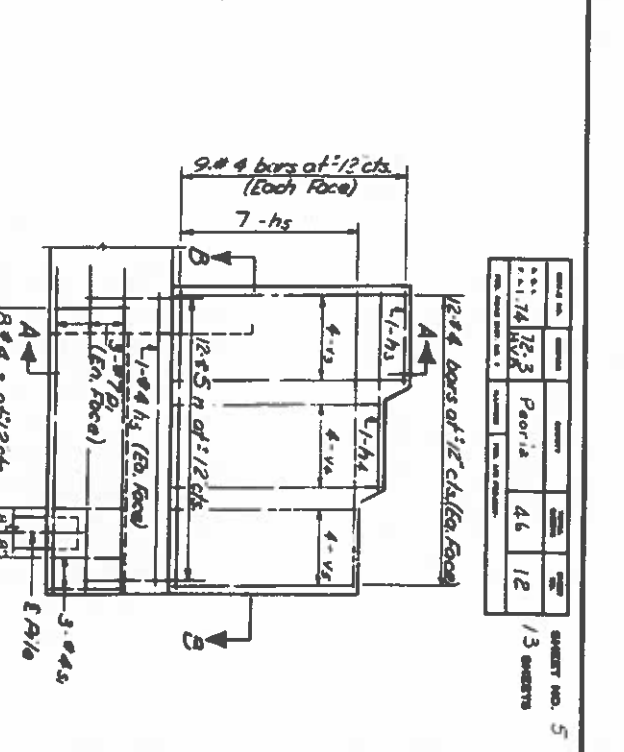
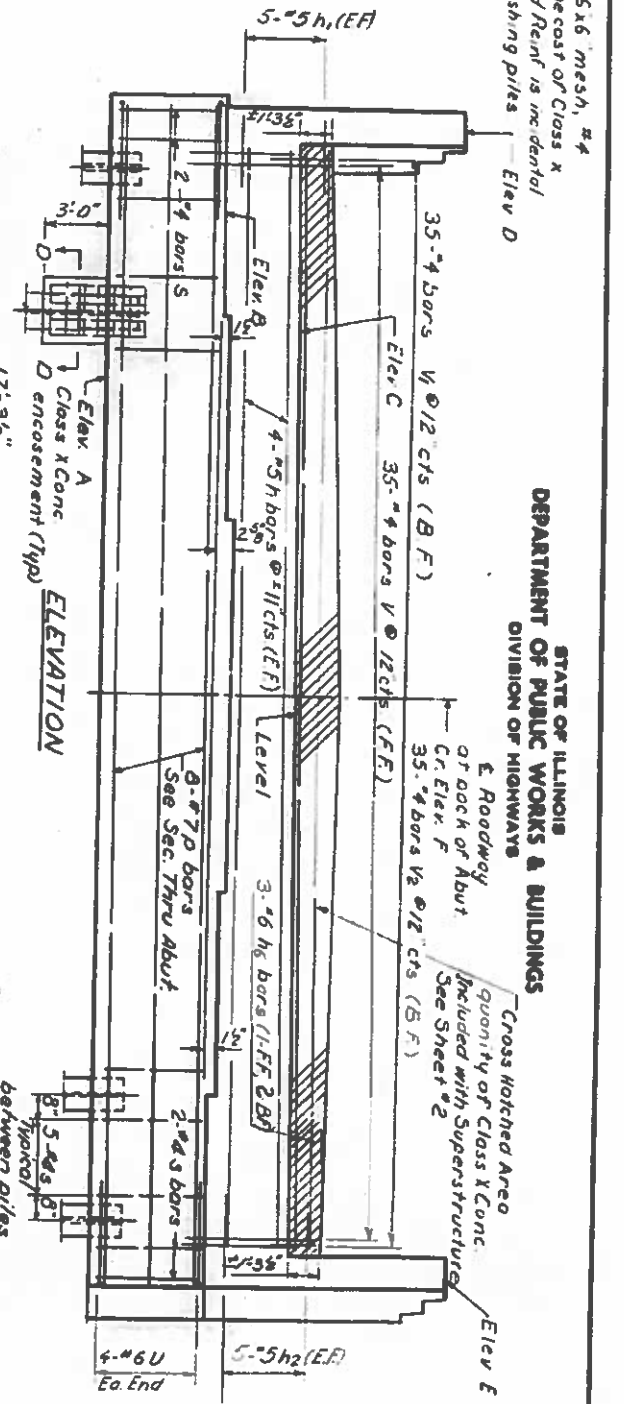
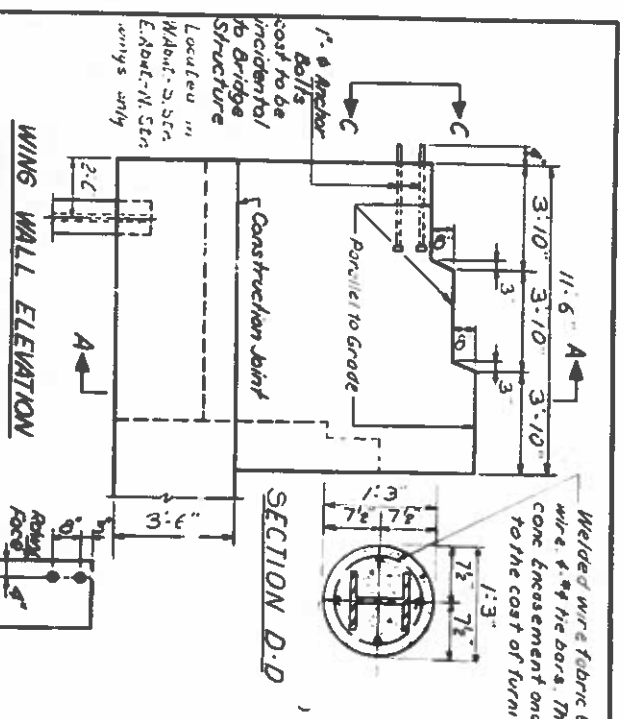
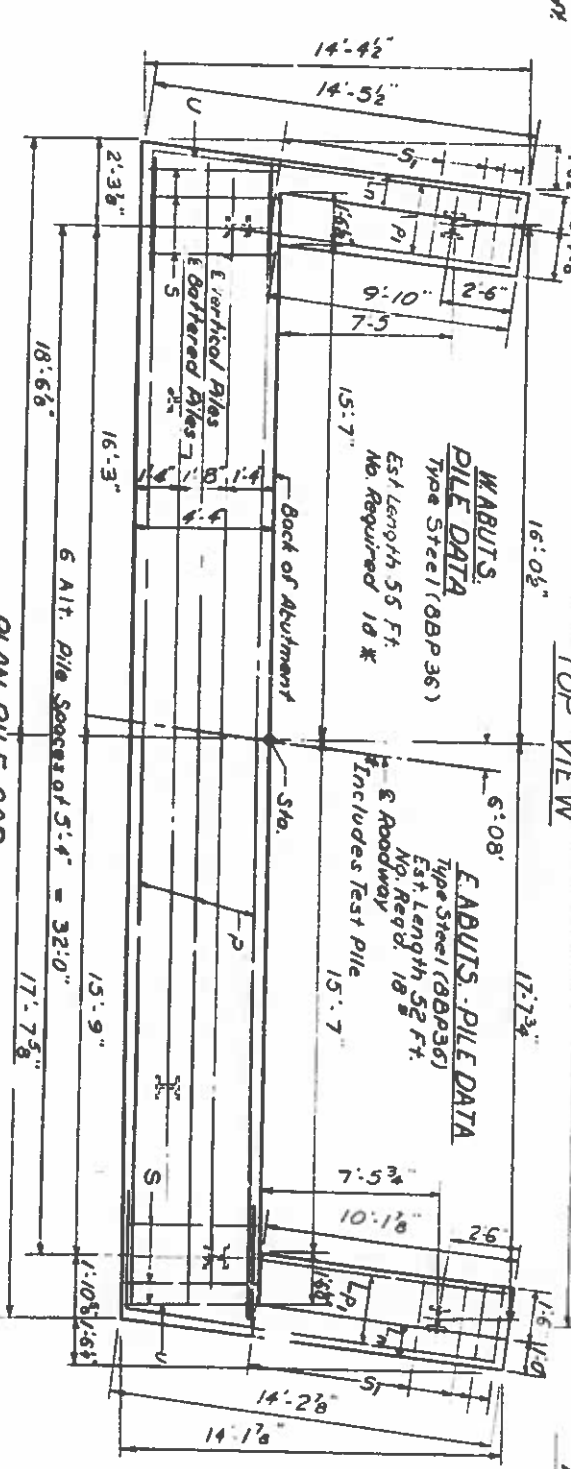


TABLE OF ELEVATIONS

	Elev A	Elev B	Elev C	Elev D	Elev E	Elev F
N Str. W/Abut	716.87	719.77	722.94	727.76	727.75	724.50
N Str. E. Abut	716.08	719.58	722.75	727.56	721.55	724.30
S Str. W/Abut	716.28	719.78	722.95	727.77	727.77	724.52
S Str. E. Abut	716.05	719.55	722.72	727.54	727.53	724.28

DESIGNED BY: *[Signature]*  
 CHECKED BY: R.D. PATEL  
 DRAWN BY: *[Signature]*  
 DATE: *[Date]*  
 APPROVED BY: *[Signature]*  
 DATE: *[Date]*



W/ABUTS PILE DATA  
 Type Steel (88P36)  
 Est Length 55 Ft.  
 No. Required 18 #

E/ABUTS PILE DATA  
 Type Steel (88P36)  
 Est Length 52 Ft.  
 No. Required 18 #  
 Includes Test Pile

ABUTMENTS  
 FAI RT 74 SEC. 72-3HVB  
 FLORIDA CO.  
 STA 186.001

Rev. 7/24/67 Revised curb back driven reinf. Changed Quantity of Class X Conc. Sec. 5.  
 From 54:8 to 153:6 Cu. Yds. & Reinf. Bars from 11,930 to 11,920 Lbs.

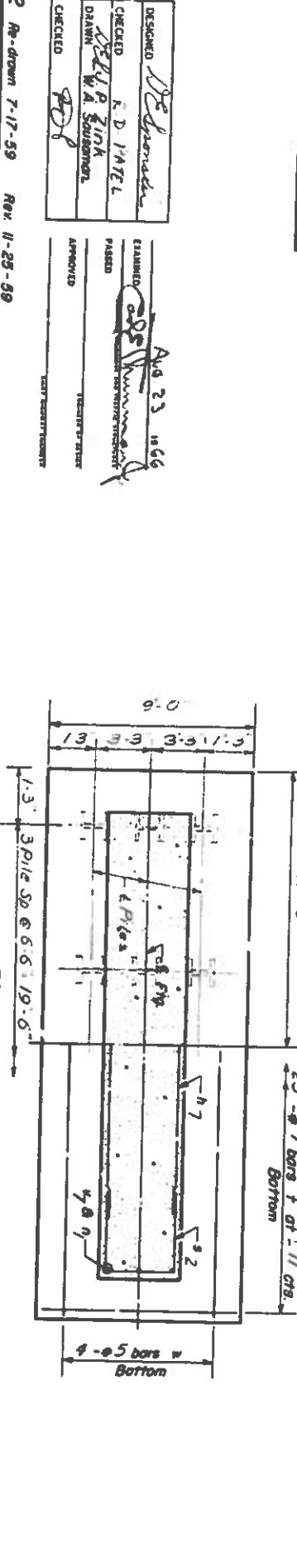
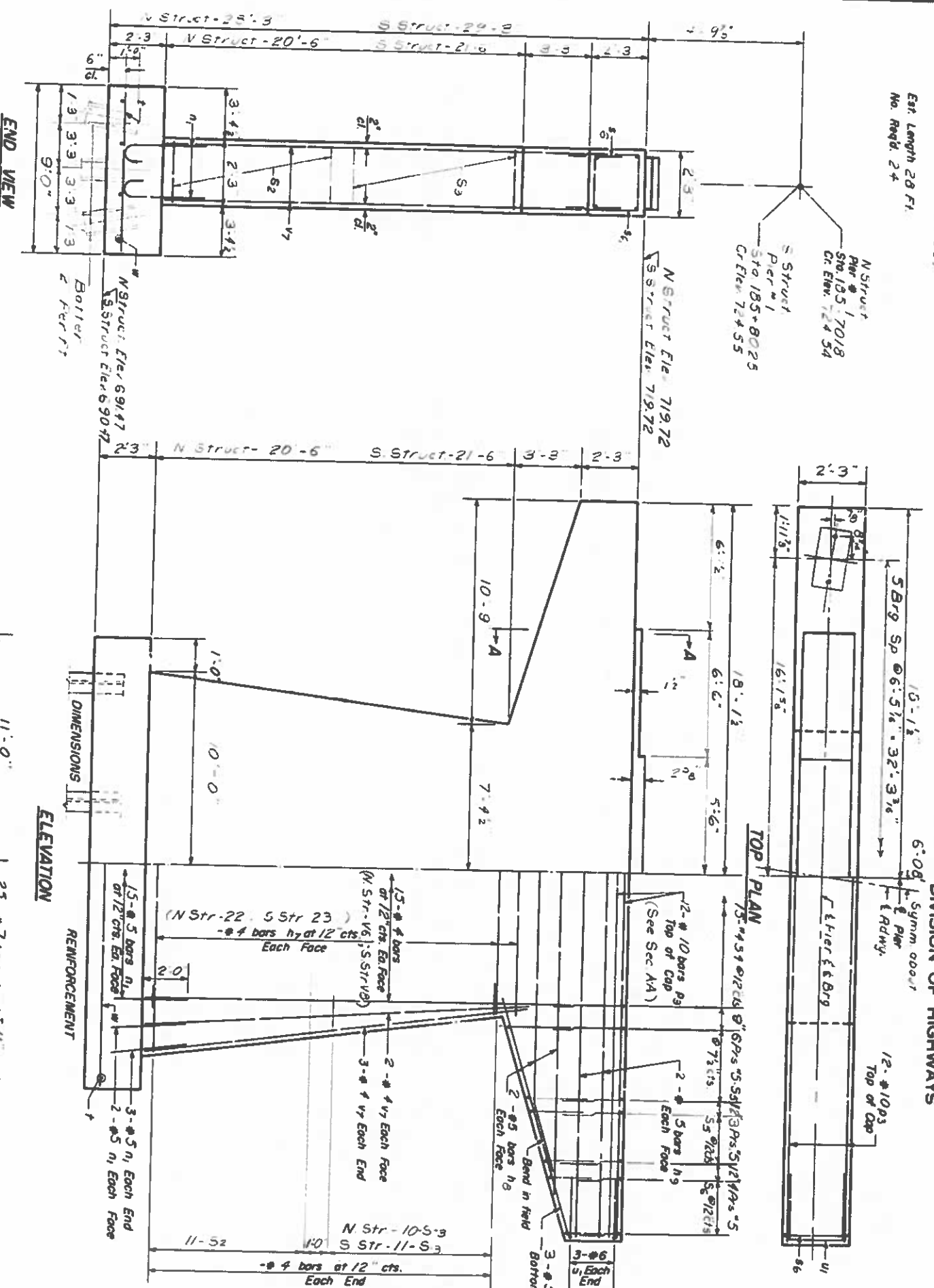
**PILE DATA**  
Type Steel (8BP36)

Est. Length 28 Ft.  
No. Reqd. 24

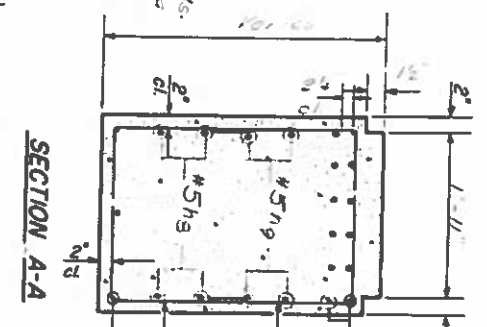
STATE OF ILLINOIS  
DEPARTMENT OF PUBLIC WORKS & BUILDINGS  
DIVISION OF HIGHWAYS

6'-0" Symm. about  
Pier  
& Admty.

12" #10 P3  
Top of Cap

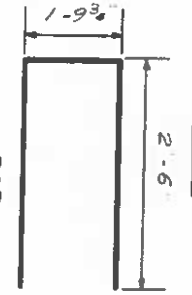


Note: All edges shall have standard chamfers except footings. Space reinf. in cap. To miss anchor bolts. Steps shall be poured manually with cap.



**A & B DIMENSIONS**

Bar	A	B
A1	2'-0"	3'-7"
A2	2'-0"	2'-4"
A3	1'-11"	3'-0"
A4	1'-11"	3'-2"
A5	1'-11"	2'-0"



**2 PIERS #1**  
**BILL OF MATERIAL**

Bar No.	Size	Length	Sheds
h7	#7	14'-5"	—
h8	#8	29'-9"	—
h9	#9	35'-11"	—
n1	#5	4'-3"	—
p2	#5	12'-6"	—
p3	#10	35'-11"	—
s2	#4	9'-2"	—
s3	#4	6'-8"	—
s4	#4	7'-11"	—
s5	#5	8'-3"	—
s6	#5	5'-11"	—
f	#7	8'-8"	—
u1	#6	8'-9"	—
u2	#4	24'-0"	—
u3	#4	22'-6"	—
u4	#4	25'-0"	—
u5	#5	21'-8"	—
Class X Concrete Cu. Yds. 21.7			
Reinforcement Bars Lbs. 55.9			
Steel Price (\$8.33) Lin. Ft. 672			

DESIGNED: *R. D. 1/4/71*  
CHECKED: *R. D. 1/4/71*  
DRAWN: *W. A. SQUAWMAN*  
CHECKED: *W. A. SQUAWMAN*

ESTABLISHED: *Apr 23 1966*  
PASSED: *W. A. SQUAWMAN*  
APPROVED: *W. A. SQUAWMAN*

P-2 Re-drawn 7-17-59 Rev. 11-25-59

DATE	BY	REVISION
11-17-59	W.A.S.	1
11-23-59	W.A.S.	2
11-23-59	W.A.S.	3

PIERS #1  
FAIR RT 74 SEC 72-3HYB  
PEORIA COUNTY  
STA. 186+00.1

SHEET NO. 6  
1/3 SHEETS



STATE OF ILLINOIS  
DEPARTMENT OF PUBLIC WORKS & BUILDINGS  
DIVISION OF HIGHWAYS

SHEET NO. 7  
1/3 SHEETS

PILE DATA

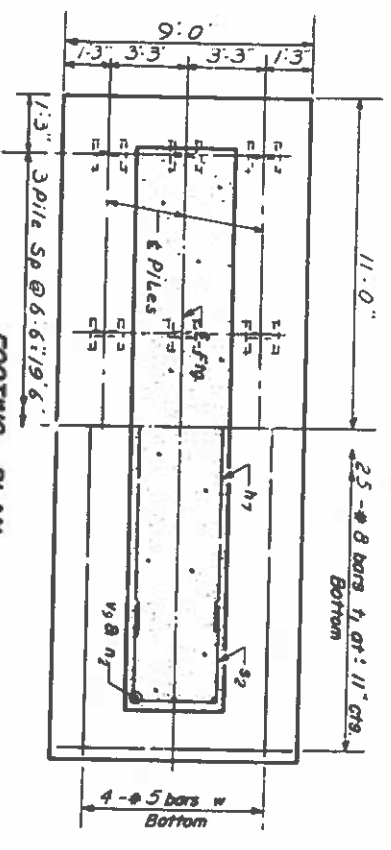
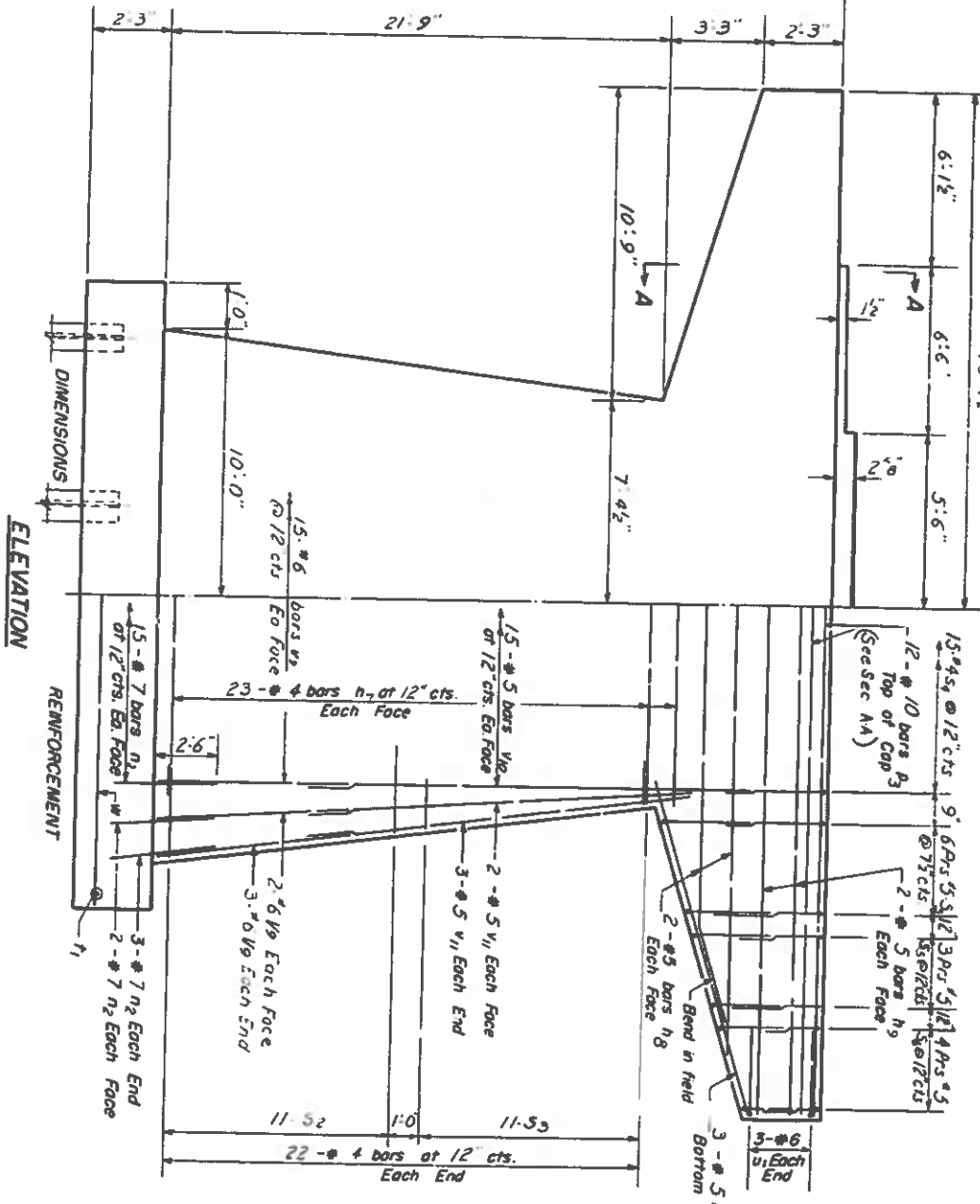
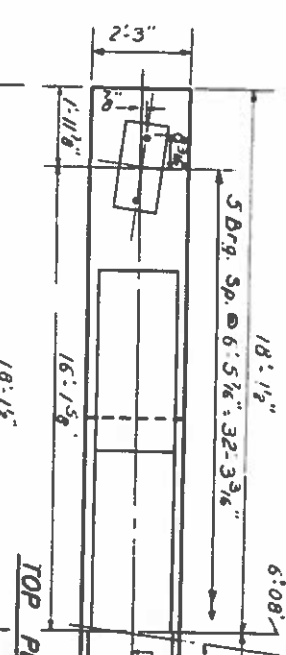
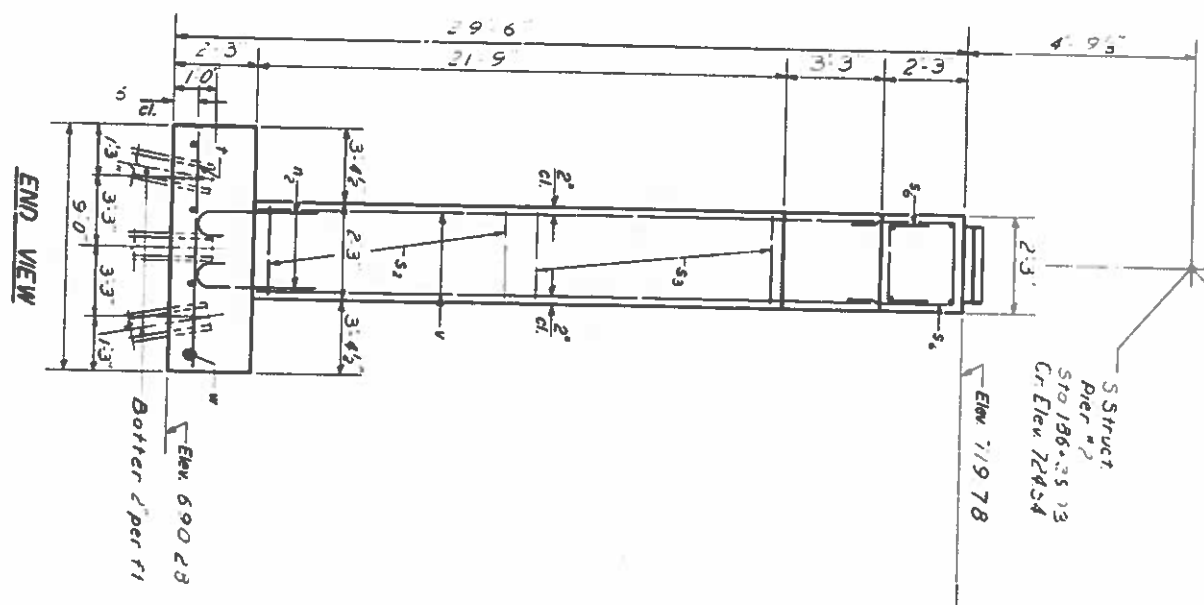
Type Steel (88P36)  
N Struct. 29 Ft.  
S Struct. 25 Ft.  
No. Reqd. 12

X Includes / Test Pile

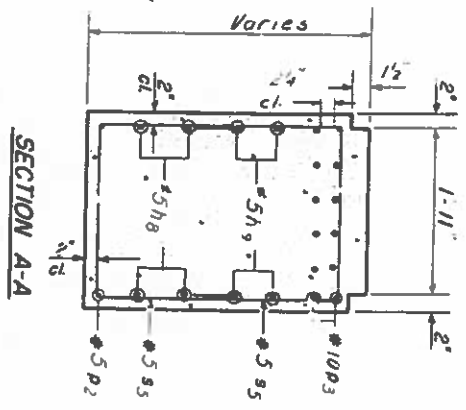
N Struct. Pier #2  
Sta. 106+22.93  
Cr. Elev. 124.54

S Struct. Pier #2  
Sta. 106+25.13  
Cr. Elev. 124.54

Elev. 119.78



Note: All edges shall have standard 3/4" chamfers except footings. Space rebar in cap to match rebar bolts. Steps shall be poured monolithically with cap.



2 PIERS #2  
BILL OF MATERIAL

Bar No.	Size	Length	Shape
h7	#4	14.5'	—
h8	#5	29.9'	—
h9	#5	35.1'	—
n2	#7	5.0'	—
b2	#5	12.6'	—
b3	#10	35.1'	—
s2	#4	9.2'	—
s3	#4	4.8'	—
s4	#4	7.1'	—
s5	#5	8.3'	—
s6	#5	5.1'	—
f1	#8	8.8'	—
u1	#6	6.9'	—
v9	#6	9.0'	—
v10	#5	17.9'	—
v11	#5	16.0'	—
w	#5	21.8'	—
Class X Concrete Cu. Yds. 123.9			
Reinforcement Bars Lbs. 11,870			
Steel Piles (88P36) n 7' 5.19			
Test Pile (88P36) Each 1			

A & B DIMENSIONS

Bar	A	B
s2	2.0"	3.7"
s3	2.0"	2.4"
s4	1.11"	3.0"
s5	1.11"	3.2"
s6	1.11"	2.0"

S BARS

Bar	Length
u1	2.5'
v1	2.5'

DESIGNED: *R. D. PAICL*  
CHECKED: *R. D. PAICL*  
DRAWN: *W. A. SOUBERT*  
CHECKED: *W. A. SOUBERT*

STAMPED: *Aug 23 1966*  
PASSED: *W. A. SOUBERT*  
APPROVED: *W. A. SOUBERT*

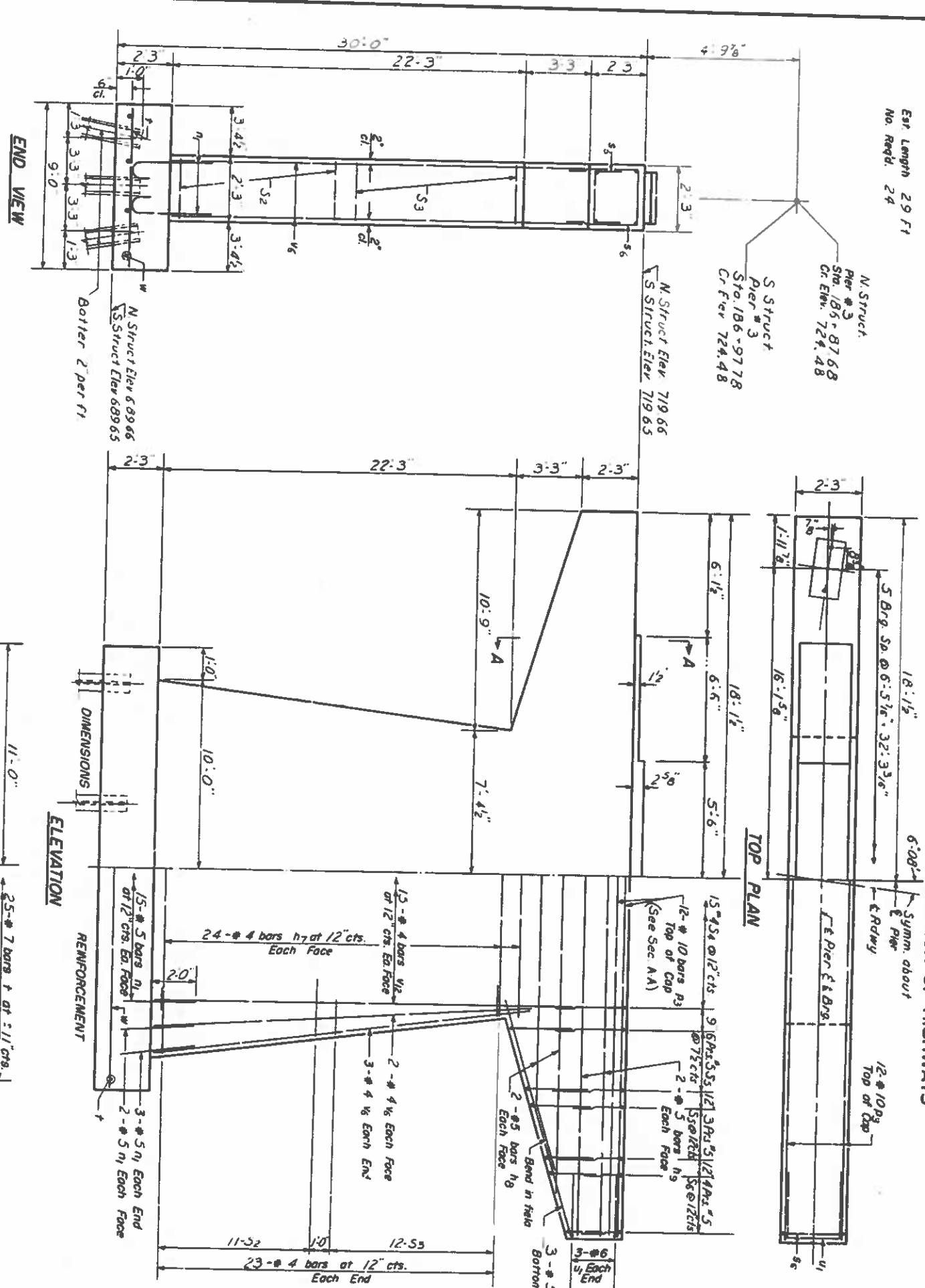
P-2 Re-drawn 7-17-59 Rev. 11-25-59

PIERS #2  
FAI RT 74 SEC 72.3 HWB  
PEORIA COUNTY  
STA 106+00.1

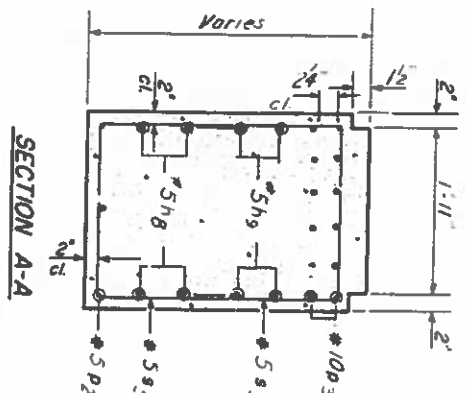
**PILE DATA**  
 Type Steel (GBP36)  
 Est. Length 29 Ft  
 No. Reqd. 24

STATE OF ILLINOIS  
 DEPARTMENT OF PUBLIC WORKS & BUILDINGS  
 DIVISION OF HIGHWAYS

PROJECT NO.	DATE	SHEET NO.	TOTAL SHEETS
174	7-2-5	46	15
FAIRRI 14 SEC 12-3HWB		1/3 SHEETS	
GEORGIA COUNTY		STA 186+001	



Note: All edges shall have standard 3/4" chamfers except footings. Space reinf. in caps to miss anchor bolts. Steps shall be poured monolithically with cap.



**A & B DIMENSIONS**

Bar	A	B
a2	2'-0"	3'-7"
a3	2'-0"	2'-8"
a4	1'-11"	3'-0"
a5	1'-11"	3'-2"
a6	1'-11"	2'-0"

**S BARS**

Bar	Dimensions
u	2'-6"
v	1'-9 3/4"

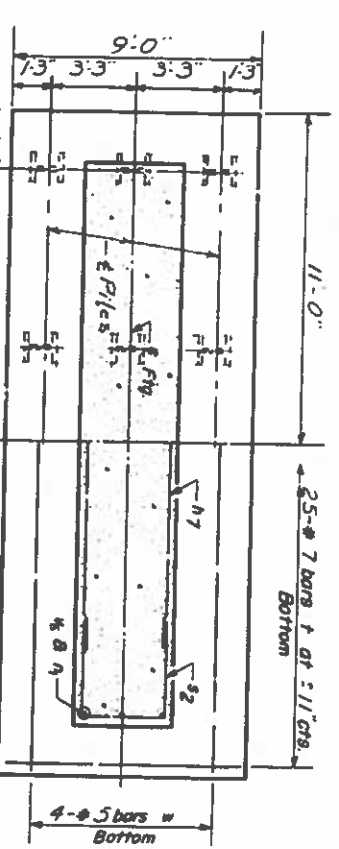
**2 PIERS \*3**  
**BILL OF MATERIAL**

Bar No.	Size	Length	Shape
a1	#4	14'-5"	—
a2	#5	29'-9"	—
a3	#5	35'-11"	—
a4	#5	4'-3"	—
a5	#5	12'-6"	—
a6	#10	35'-11"	—
b1	#4	9'-2"	□
b2	#4	6'-8"	□
b3	#4	7'-11"	□
b4	#5	8'-3"	□
b5	#5	5'-11"	□
c	#7	8'-8"	—
d	#6	6'-9"	—
e	#4	24'-0"	—
f	#4	25'-7"	—
g	#5	21'-8"	—
Class X Concrete Cu Yds. 253			
Reinforcement Bars Lbs. 9830			
Steel/Pile/cap/lin Ft. 696			

DESIGNED: *[Signature]*  
 CHECKED: R. B. PAIEL  
 DRAWN: J. O. ZINK  
 W. A. SPOFFORD  
 APPROVED: *[Signature]*  
 AUG. 23 1966

P-2 Re-drawn 7-17-59 Rev. II-25-59

**FOOTING PLAN**



PIERS \*3  
 FAIRRI 14 SEC 12-3HWB  
 GEORGIA COUNTY  
 STA 186+001

**PILE DATA**  
 Type Steel (A8P36)  
 Est. Length 32 FT  
 No. Reqd. 8

N Struct 1 3 Struct 1  
 8 27 FT 8

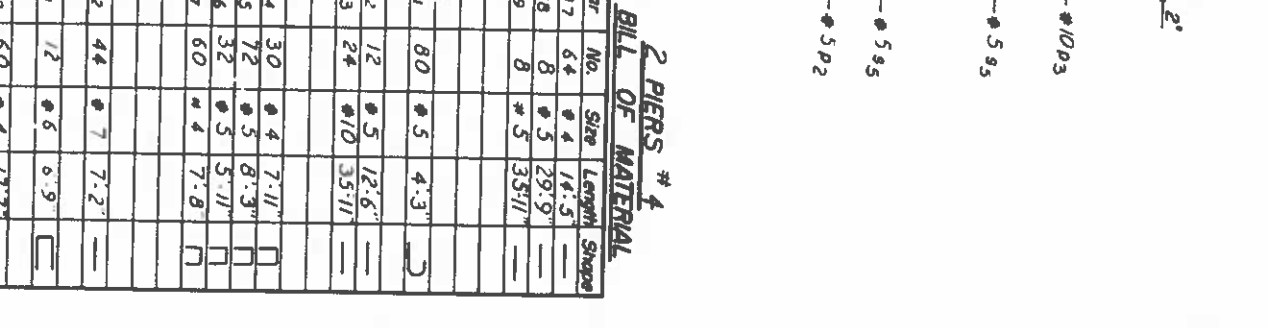
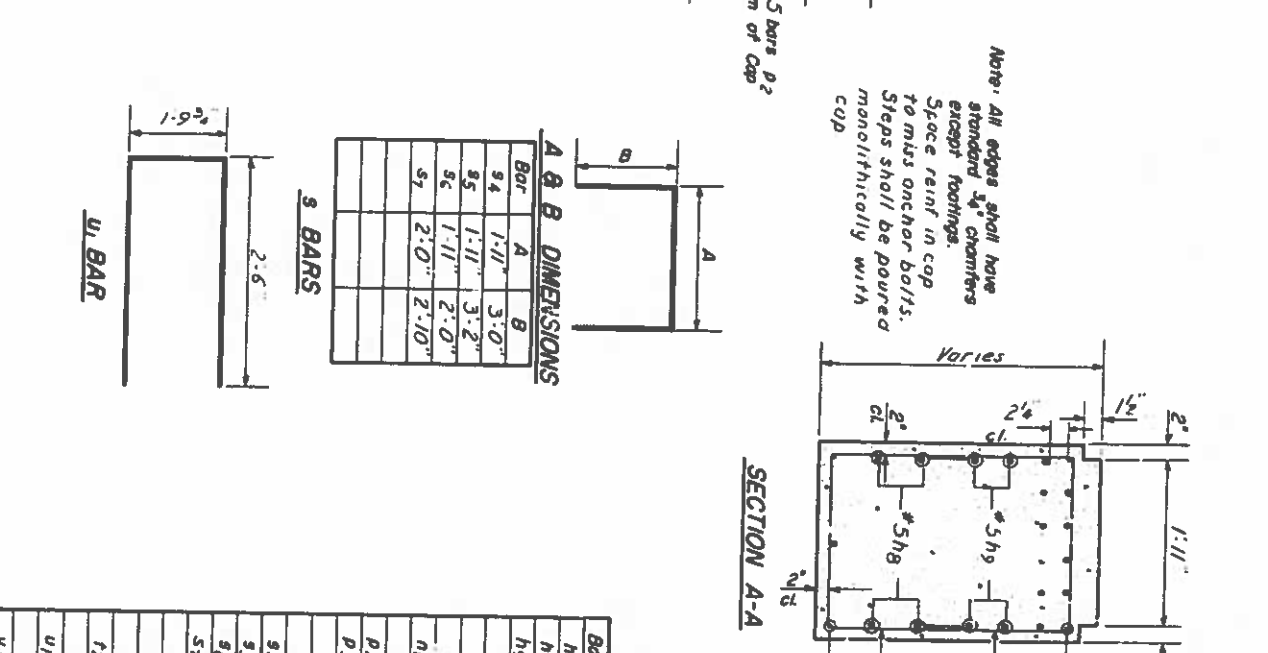
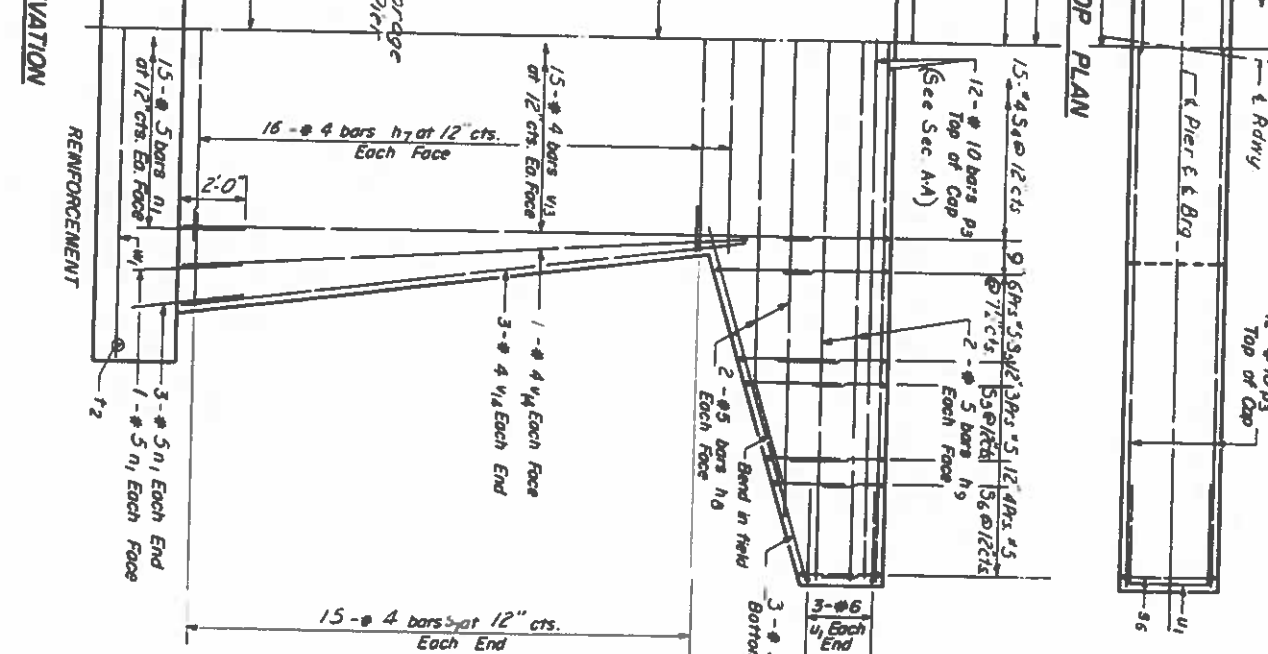
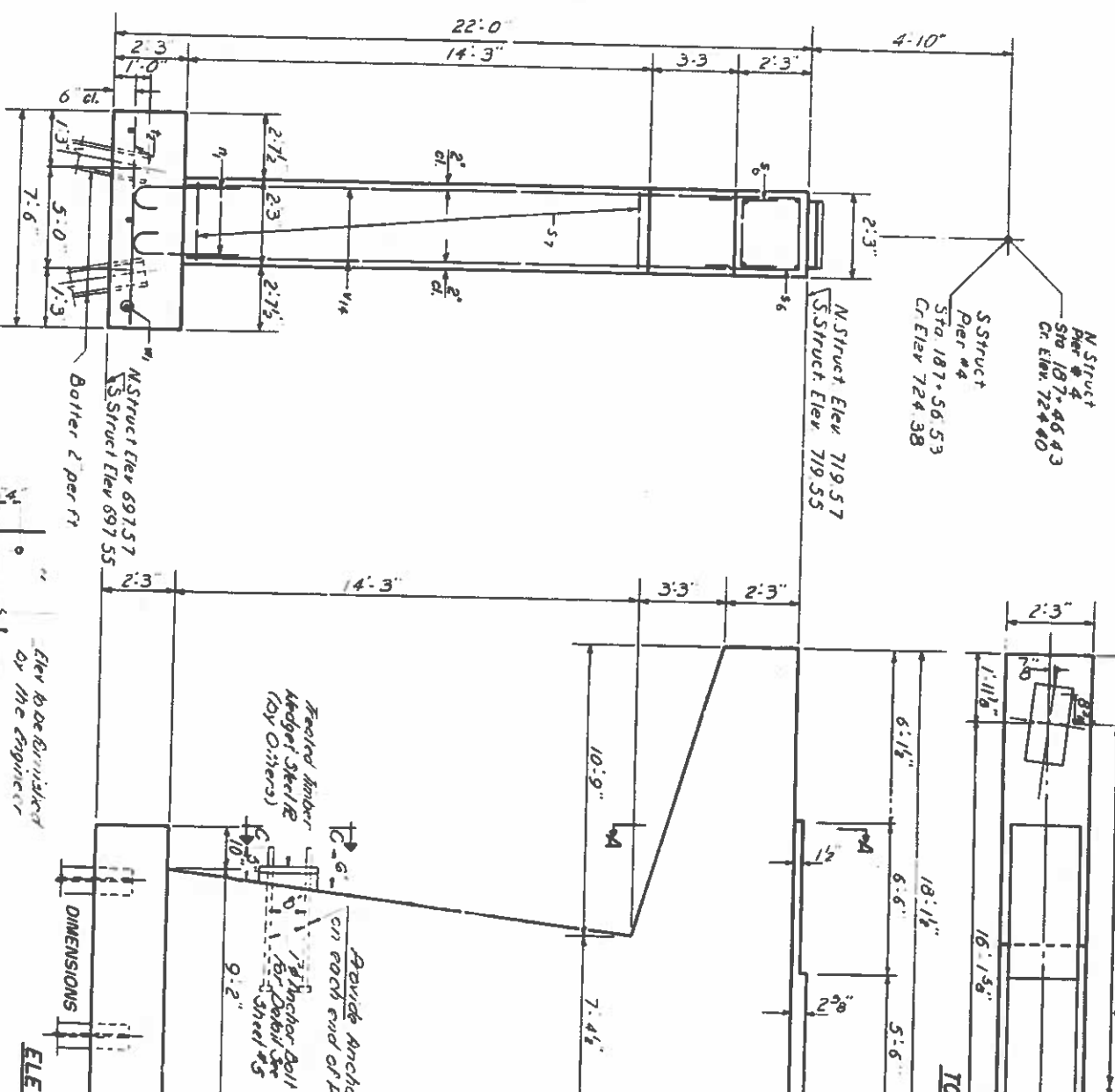
N Struct Pier # 4  
 Sta 187+56.53  
 Cr. Elev 724.40

S Struct Pier # 4  
 Sta 187+56.53  
 Cr. Elev 724.38

N Struct Elev 719.57  
 S Struct Elev 719.55

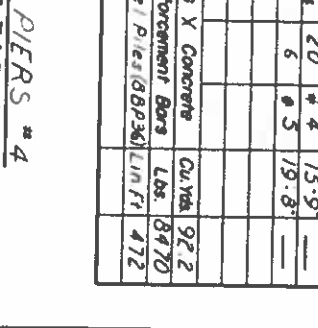
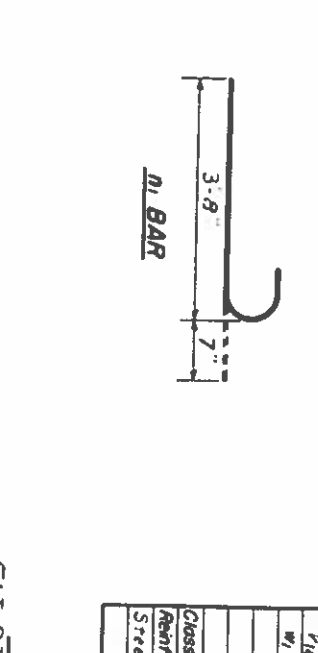
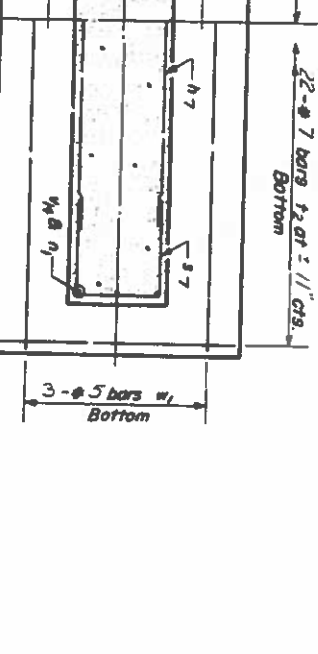
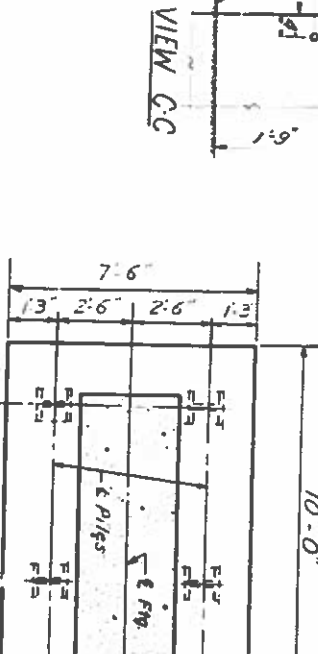
STATE OF ILLINOIS  
 DEPARTMENT OF PUBLIC WORKS & BUILDINGS  
 DIVISION OF HIGHWAYS

PROJECT NO.	72-3	SHEET NO.	44	TOTAL SHEETS	16
DATE	11-74	CITY	Peoria	NO. OF SHEETS	1/3 SHEETS
BY	HJB	SCALE	AS SHOWN		



**END VIEW**  
 The face toward traffic finished ground line

**VIEW CC**  
 Elev to be furnished by the Engineer



**2 PIERS # 4**  
**BILL OF MATERIAL**

Bar No.	Size	Length	Shape
h7	#4	14'-5"	—
h8	#5	29'-9"	—
h9	#5	35'-11"	—
n1	#5	4'-3"	—
p2	#5	12'-6"	—
p3	#10	35'-11"	—
q4	#4	7'-11"	—
q5	#5	8'-3"	—
q6	#5	5'-11"	—
s7	#4	7'-8"	—
t2	#7	7'-2"	—
u1	#6	6'-9"	—
v3	#4	17'-7"	—
w4	#4	15'-9"	—
w1	#5	19'-8"	—

Class X Concrete Cu. Yds. 92.2  
 Reinforcement Bars Lbs. 8470  
 Steel Piles (A8P36) Lin. Ft. 472

DESIGNED: *DeLorenzo*  
 CHECKED: R. D. PATEL  
 DRAWN: W. A. SPOURDINK  
 CHECKED: *W. A. SPOURDINK*

ESTIMATED: *W. A. SPOURDINK*  
 PASSED: *W. A. SPOURDINK*  
 APPROVED: *W. A. SPOURDINK*

Aug. 23, 1964

P-2 Re-drawn 7-17-59 Rev. 11-25-58  
 Rev. 7-1-67 DJS Added River Aids 1/4" Dia

FAI RT 74 SEC. 72-34VB  
 PEORIA COUNTY  
 STA. 186+00/1