

CONTACT JULIE AT 811 OR 800-892-0123

With the following:



County MADISON

City / Township CITY OF ALTON

Sec & 1/4 Sec No. SE. 1/4 SEC. 7 T.5N., R.9W.
SW. 1/4 SEC. 8 T.5N., R.9W.

48 HOURS (2 working days) BEFORE YOU DIG

11-08-2024 LETTING ITEM 135

STATE OF ILLINOIS DEPARTMENT OF TRANSPORTATION STP FUNDS

MILTON ROAD - PHASE 1 SECTION 21-00242-00-RS FAU ROUTE 8962 PROJECT U9E3(977) CITY OF ALTON, ILLINOIS MADISON COUNTY JOB C-98-009-25

F.A.U. RTE.	COUNTY	TOTAL SHEETS	SHEET NO.
8962	MADISON	18	1
FEDERAL AID PROJECT		CONTRACT NO. 97845	

AGENCIES KNOWN TO HAVE FACILITIES WITHIN THE PROJECT AREA ARE AS FOLLOWS:

ILLINOIS AMERICAN WATER CO.
4436 INDUSTRIAL DRIVE
ALTON, ILLINOIS 62002
(618) 466-2131

AT&T COMMUNICATIONS
203 GOETHE
COLLINSVILLE, IL 62234
(618) 346-6422

AMEREN IP
700 OAKWOOD AVENUE
ALTON, ILLINOIS 62002
(618) 463-4041 (ELECTRIC)
(618) 463-4027 (GAS)

ALTON PUBLIC WORKS
2 EMMA KAUS LANE
ALTON, ILLINOIS 62002
(618) 466-3133

CHARTER COMMUNICATIONS
4767 SIGNATURE INDUSTRIAL DRIVE
EDWARDSVILLE, IL 62025
(618) 779-4179

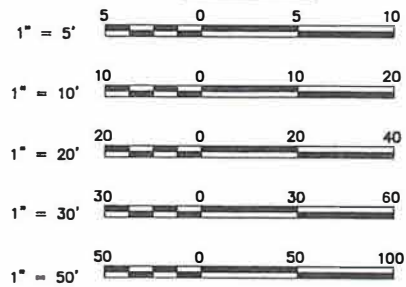
INDEX TO SHEETS

- 1 COVER SHEET
- 2 GENERAL NOTES, LEGENDS, CONTROL POINTS, AND COMMITMENTS
- 3 SUMMARY OF QUANTITIES
- 4 TYPICAL SECTIONS
- 5-6 SCHEDULES
- 7-10 PLAN AND PROFILE
- 11 TRAFFIC CONTROL PLAN
- 12-16 CONSTRUCTION DETAILS
- 17-18 PAVEMENT MARKING & SIGNING PLAN

HIGHWAY STANDARDS

000001-08	604036-03	701611-01
001001-02	606001-08	701701-10
001006	701006-05	701801-06
424001-11	701011-04	701901-09
424011-04	701301-04	720001-01
424016-05	701311-03	720006-04
442101-09	701427-05	728001-01
442201-03	701501-06	780001-05
602301-04	701502-09	781001-04
602401-07	701601-09	814001-03
602426-03	701606-10	880006-01

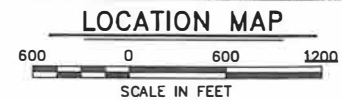
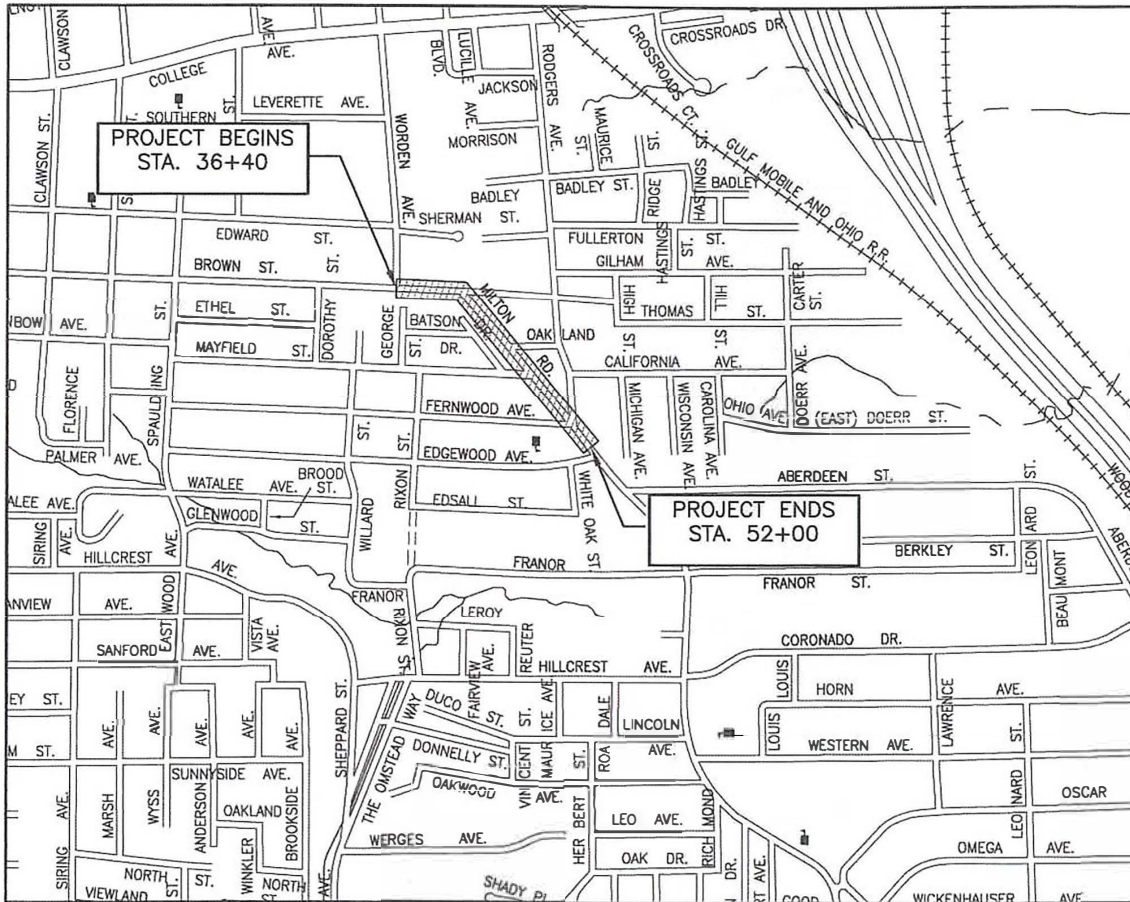
SCALES



FULL SIZE PLANS HAVE BEEN PREPARED USING STANDARD ENGINEERING SCALES. REDUCED SIZED PLANS WILL NOT CONFORM TO STANDARD SCALES. IN MAKING MEASUREMENTS ON REDUCED PLANS THE ABOVE SCALES MAY BE USED.

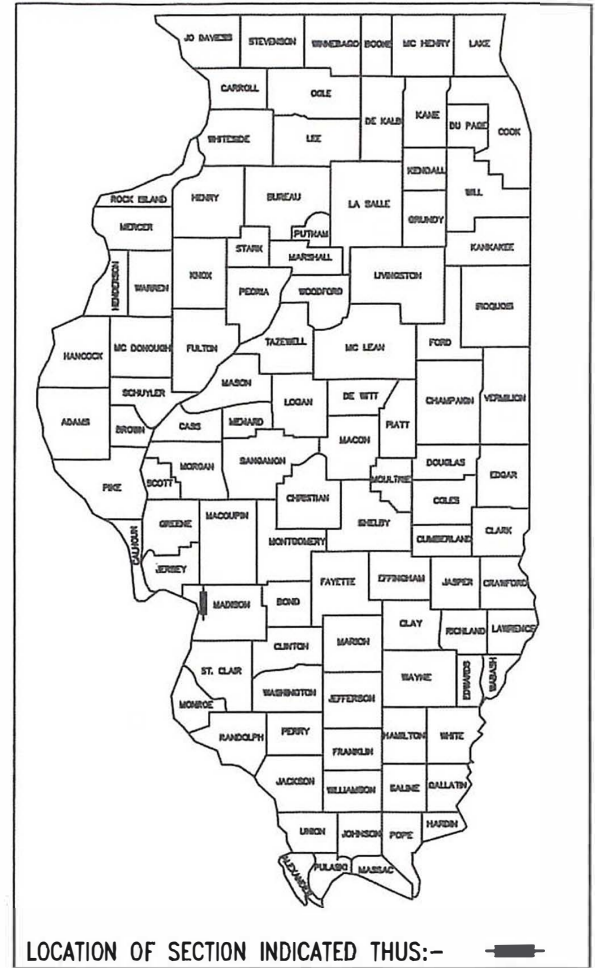
FUNCTIONAL CLASSIFICATION: MINOR ARTERIAL
DESIGN SPEED = 30 M.P.H.
ADT: 11,750 (2024), 11,860 (2025)

TOWNSHIP 5N, RANGE 9W



GROSS LENGTH = 1,560 FEET = 0.295 MILES
NET LENGTH = 1,560 FEET = 0.295 MILES

SMS Sheppard Morgan & Schwaab, Inc.
ENGINEERS CONSULTING ENGINEERS & LAND SURVEYORS
215 Market Street
Alton, Illinois 62002
618/462-9755



LOCATION OF SECTION INDICATED THUS:-

STATE OF ILLINOIS
DEPARTMENT OF TRANSPORTATION

APPROVED August 7, 2024
Walter Thomas
MAYOR

PASSED September 6, 2024
[Signature]
DISTRICT 8 ENGINEER OF LOCAL ROADS & STREETS

RELEASING FOR BID
BASED UPON LIMITED
REVIEW September 6, 2024
[Signature]
REGIONAL ENGINEER

STATE OF ILLINOIS
DEPARTMENT OF TRANSPORTATION
PRINTED BY AUTHORITY OF THE STATE OF ILLINOIS



DATE SIGNED 8-7-2024
EXPIRATION DATE 11-30-2025

DESIGN FIRM REGISTRATION
NO. 184-000992

August, 2024

SUMMARY OF QUANTITIES


CODE NO.	ITEM	UNIT	QUANTITY
20201200	REMOVAL AND DISPOSAL OF UNSUITABLE MATERIAL	CU YD	10
20800150	TRENCH BACKFILL	CU YD	2
31101000	SUBBASE GRANULAR MATERIAL, TYPE B	TON	20
40600290	BITUMINOUS MATERIALS (TACK COAT)	POUND	5,299
40600990	TEMPORARY RAMP	SQ YD	275
40602985	HOT-MIX ASPHALT BINDER COURSE, IL-9.5, N70	TON	659
40604162	POLYMERIZED HOT-MIX ASPHALT SURFACE COURSE, IL-9.5, MIX "D", N70	TON	659
42400100	PORTLAND CEMENT CONCRETE SIDEWALK 4 INCH	SQ FT	1,861
42400410	PORTLAND CEMENT CONCRETE SIDEWALK 8 INCH	SQ FT	232
42400800	DETECTABLE WARNING	SQ FT	176
44000100	PAVEMENT REMOVAL	SQ YD	124
44000200	DRIVEWAY PAVEMENT REMOVAL	SQ YD	25
44000300	CURB REMOVAL	FOOT	65
44000600	SIDEWALK REMOVAL	SQ FT	1,266
44200050	WELDED WIRE REINFORCEMENT	SQ YD	88
44200944	CLASS B PATCHES, TYPE IV, 8"	SQ YD	88
44201773	CLASS D PATCHES, TYPE I, 11"	SQ YD	13
44201777	CLASS D PATCHES, TYPE II, 11"	SQ YD	103
44201781	CLASS D PATCHES, TYPE III, 11"	SQ YD	45
44201783	CLASS D PATCHES, TYPE IV, 11"	SQ YD	46
44201298	DOWEL BARS 1 1/4"	EACH	76
44213200	SAW CUTS	FOOT	258
44213204	TIE BARS 3/4"	EACH	33
55080050	STORM SEWERS, CLASS B, TYPE 1 12"	FOOT	20
60236200	INLETS, TYPE A, TYPE 8 GRATE	EACH	1
60255500	MANHOLES TO BE ADJUSTED	EACH	3
67000500	ENGINEER'S FIELD OFFICE, TYPE B	CAL MO	4
67100100	MOBILIZATION	L SUM	1
70300100	SHORT TERM PAVEMENT MARKING	FOOT	2127
70300150	SHORT TERM PAVEMENT MARKING REMOVAL	SQ FT	709
70300211	TEMPORARY PAVEMENT MARKING - LETTERS AND SYMBOLS - PAINT	SQ FT	32

* DENOTES SPECIALTY ITEM

CODE NO.	ITEM	UNIT	QUANTITY
70300221	TEMPORARY PAVEMENT MARKING - LINE 4" - PAINT	FOOT	5,225
70300241	TEMPORARY PAVEMENT MARKING - LINE 6" - PAINT	FOOT	725
70300261	TEMPORARY PAVEMENT MARKING - LINE 12" - PAINT	FOOT	317
70300281	TEMPORARY PAVEMENT MARKING - LINE 24" - PAINT	FOOT	72
* 72000100	SIGN PANEL - TYPE 1	SQ FT	57
* 72800100	TELESCOPING STEEL SIGN SUPPORT	FOOT	243
* 78000100	THERMOPLASTIC PAVEMENT MARKING - LETTER AND SYMBOLS	SQ FT	31
* 78000200	THERMOPLASTIC PAVEMENT MARKING - LINE 4"	FOOT	5,225
* 78000400	THERMOPLASTIC PAVEMENT MARKING - LINE 6"	FOOT	258
* 78000600	THERMOPLASTIC PAVEMENT MARKING - LINE 12"	FOOT	323
* 78000650	THERMOPLASTIC PAVEMENT MARKING - LINE 24"	FOOT	72
* 78009006	MODIFIED URETHANE PAVEMENT MARKING - LINE 6"	FOOT	467
* 78009012	MODIFIED URETHANE PAVEMENT MARKING - LINE 12"	FOOT	65
* 78100100	RAISED REFLECTIVE PAVEMENT MARKER	EACH	48
78300202	PAVEMENT MARKING REMOVAL - WATER BLASTING	SQ FT	4,300
* 88102717	PEDESTRIAN SIGNAL HEAD, LED, 1-FACE, BRACKET MOUNTED WITH COUNTDOWN TIMER	EACH	2
* X1400031	REMOVE PEDESTRIAN PUSH BUTTON	EACH	2
X2600011	REMOVE AND RELOCATE SIGN PANEL	EACH	5
X4005553	HOLES DRILLED	EACH	2
X4400196	HOT-MIX ASPHALT SURFACE REMOVAL (SPECIAL)	SQ YD	7,850
X4402400	CURB REMOVAL (SPECIAL)	FOOT	207
X6025600	MANHOLES TO BE ADJUSTED (SPECIAL)	EACH	3
X6061005	CONCRETE CURB, TYPE B (SPECIAL)	FOOT	295
X7010216	TRAFFIC CONTROL AND PROTECTION, (SPECIAL)	L SUM	1
X7240300	SIGN REMOVAL	EACH	3
X8140115	HANDHOLE TO BE ADJUSTED	EACH	1
* X8760200	ACCESSIBLE PEDESTRIAN SIGNALS	EACH	2
* X8950307	REMOVE EXISTING PEDESTRIAN SIGNAL HEAD	EACH	2
X4421329	CLASS C PATCHES, TYPE II, 8 INCH (SPECIAL)	SQ YD	11
X0326458	PAVEMENT REPLACEMENT, SPECIAL	SQ YD	124

* DENOTES SPECIALTY ITEM

REVISIONS									
-----------	--	--	--	--	--	--	--	--	--


Sheppard, Morgan & Schwaab, Inc.
 CONSULTING ENGINEERS AND LAND SURVEYORS
 215 Newark Street, Alton, IL 62002 618/462-9765 Email: mail@smsengineers.com
 DESIGN FIRM # 184-000992

CITY OF ALTON, ILLINOIS
 SECTION 21-00242-00-RS
 MILTON ROAD
 SUMMARY OF QUANTITIES

CONTRACT NO. 97845
 F.A.U. RTE. 8962
 REF. BK. PG.
 JOB NO. 500718
 DSN. BY: ANJ
 DWN. BY: CAD
 CHK. BY: DEG
 DATE: JUNE, 2024
 SCALE: N/A
 SHEET 3 OF 18

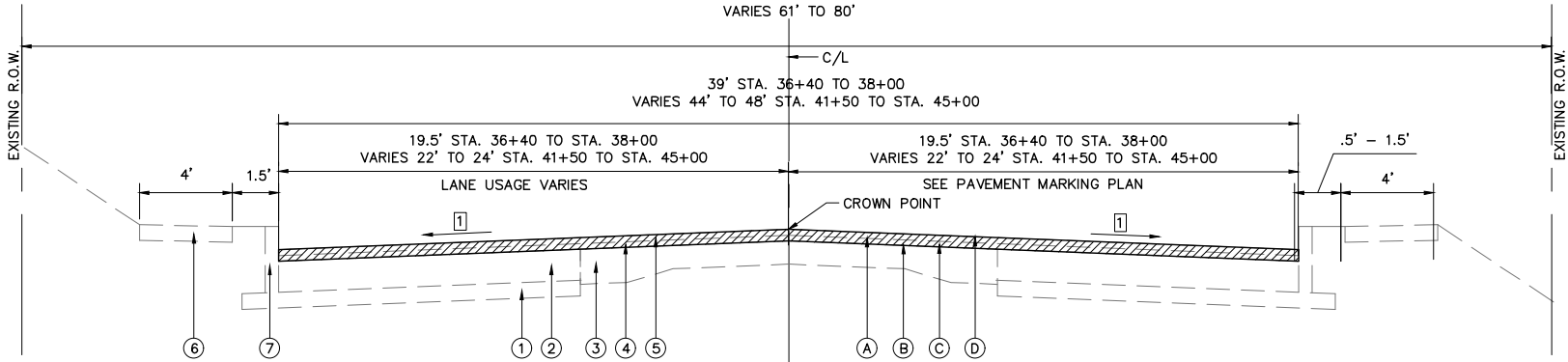
PAVING LEGEND

- ① EXISTING STABILIZED SUB-BASE, 4"
- ② EXISTING P.C.C. BASE COURSE, 8"
- ③ EXISTING VARIABLE DEPTH CONCRETE PAVEMENT
- ④ EXISTING BITUMINOUS CONCRETE BINDER COURSE, 1-1/2"
- ⑤ EXISTING BITUMINOUS CONCRETE SURFACE COURSE, 1-1/2"
- ⑥ EXISTING P.C.C. SIDEWALK, 4"
- ⑦ CONCRETE CURB, TYPE B
- (A) PROPOSED HMA SURFACE REMOVAL, 3" SPECIAL SHOWN AS
- (B) PROPOSED BITUMINOUS MATERIALS (TACK COAT) (SSI-VH)
- (C) PROPOSED HMA BINDER COURSE N70, 1-1/2"
- (D) PROPOSED POLYMERIZED HMA SURFACE COURSE, IL-9.5, MIX "D", N70, 1-1/2"

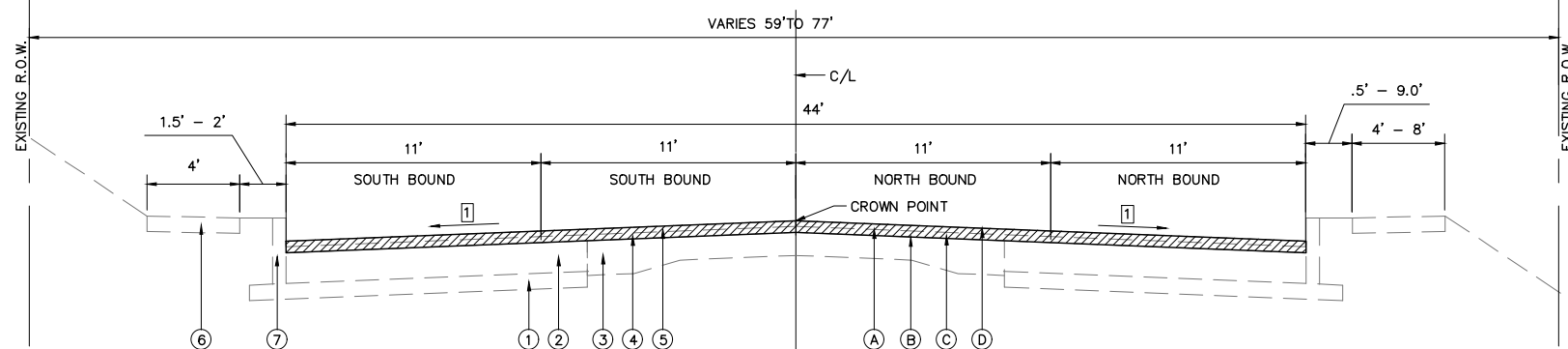
TYPICAL SECTION NOTES

- [1] EXISTING CROSS SLOPE IS 1.5% TO 2.0%. THE PROPOSED CROSS SLOPE IS 2.0%.
- [2] MATCH EXISTING SUPERELEVATION WHICH IS 4.0%

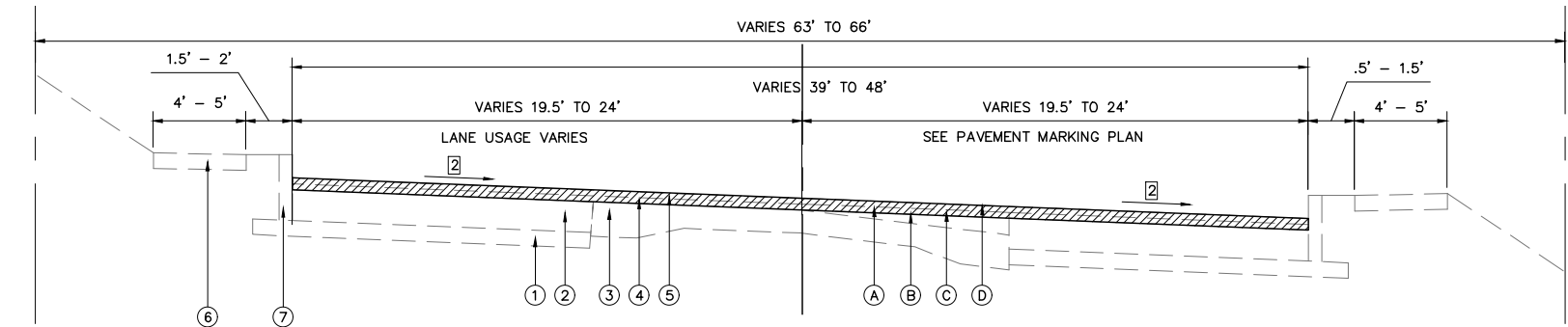
MIX DESIGNS			
LOCATION	ENTIRE JOB		
MIXTURE USE	POLY SURFACE	BINDER	PATCHING
PG	SBS PG 70-28	PG 64-22	PG 64-22
DESIGN AIR VOIDS	4% @ NDES = 70	4% @ NDES = 70	4% @ NDES = 50 OR 70
MIX COMPOSITION	IL 9.5	IL 9.5	----
FRICTION AGG	MIX D	MIX C	MIX C
MIXTURE WEIGHT	112.0 LB/SQ YD/INCH	112.0 LB/SQ YD/INCH	112.0 LB/SQ YD/INCH
QUALITY MANAGEMENT PROGRAM	QC/QA	QC/QA	QC/QA
SUBLOT SIZE	N/A	N/A	N/A
MATERIAL TRANSFER DEVICE (REQUIRED?)	NO	NO	NO



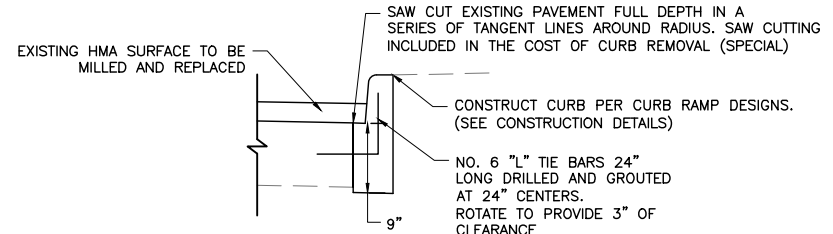
**TYPICAL SECTION
BROWN STREET / MILTON ROAD**
STA. 36+40 TO STA. 38+00
STA. 41+50 TO STA. 45+00



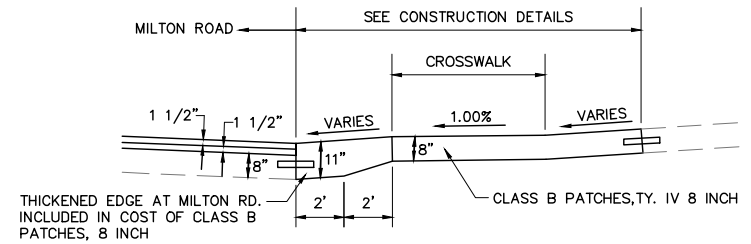
**TYPICAL SECTION
MILTON ROAD**
STA. 45+00 TO STA. 52+00



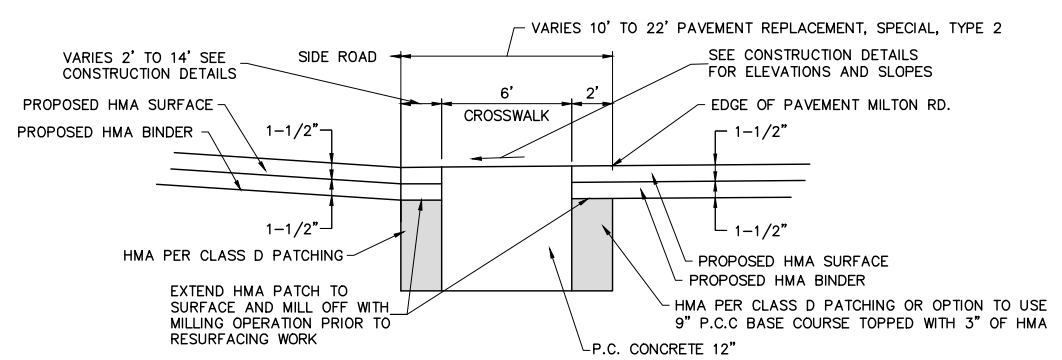
**TYPICAL SECTION SUPER ELEVATION
MILTON ROAD**
STA. 38+00 TO STA. 41+50



**PROPOSED TYPICAL SECTION
CONCRETE CURB, TYPE B (SPECIAL)**



**PROPOSED TYPICAL SECTION
AT SIDE ROAD
ROGERS AVE.**



**PROPOSED TYPICAL SECTION
AT SIDE ROAD
BROWN ST. AND OAKLAND AVE.**

NOTE: THIS WORK SHALL BE DONE PRIOR TO THE MILLING AND RESURFACING WORK.

NO.	REVISIONS

SMS Sheppard, Morgan & Schwab, Inc.
CONSULTING ENGINEERS AND LAND SURVEYORS
215 Market Street, Alton, IL 62002 618/462-5755 E-mail: mail@smsengineers.com
DESIGN FIRM # 184-000932

CITY OF ALTON, ILLINOIS
SECTION 21-00242-00-RS
MILTON ROAD
TYPICAL SECTIONS

CONTRACT NO.	97845
F.A.U. RTE.	8962
MILTON RD TYP.dwg	REF. BK. PG.
JOB NO.	500718
DSN. BY:	ANJ
DWN. BY:	CAD
CHK. BY:	DEG
DATE:	JUNE, 2024
SCALE:	NONE
SHEET	4 OF 18

MANHOLES TO BE ADJUSTED SCHEDULE

STATION	OFFSET	TYPE	MANHOLES TO BE ADJUSTED (EA.)
MILTON ROAD			
40+31.96	28.34' LT	STORM	1
44+69.66	27.25' LT	STORM	1
49+63.32	28.41' LT	STORM	1
TOTALS			3

MANHOLES TO BE ADJUSTED (SPECIAL) SCHEDULE

STATION	OFFSET	TYPE	MANHOLES TO BE ADJUSTED (SPECIAL) (EA.)
MILTON ROAD			
38+75.27	18.89' LT	SANITARY	1
38+78.67	19.72' RT	SANITARY	1
39+60.72	9.40' LT	SANITARY	1
TOTALS			3

SIGN AND POST SCHEDULE

STATION	OFFSET	TYPE	DESCRIPTION	DIMENSIONS (IN.)		SIGN PANEL TYPE 1 (SQ FT)	TELES STL SIN SUPPORT (FOOT)	REMOVE AND RELOCATE SIGN PANEL (EACH)	SIGN REMOVAL (EACH)	HOLES DRILLED (EACH)	COMMENT
				WIDTH	DEPTH						
STATE STREET											
37+33.00	20.50' RT	W13-1P W1-1	ADVISORY SPEED 20MPH TURN	18	18	2.25	16				
38+33.00	21.50' LT	W1-8	CHEVRON	18	24	3	13				
39+11.00	25.50' LT	W1-8	CHEVRON	18	24	3	13				
39+13.00	25.50' LT	W1-8	CHEVRON	18	24	3	13				
39+81.00	28.00' LT	W1-8	CHEVRON	18	24	3	13				
39+83.00	28.00' LT	W1-8	CHEVRON	18	24	3	13				
39+58.19	28.32' LT	W1-8	CHEVRON	18	24				1		
37+33.00	20.50' RT	W13-1P W1-1	ADVISORY SPEED 20 MPH TURN	18	18	2.25	16				
43+10.00	25.50' RT	W11-2 W16-9P	PEDESTRIAN AHEAD	30	30	6.25	17				FLUORESCENT YELLOW GREEN
44+00.58	29.79' LT	R1-1 D3-1	STOP SIGN STREET NAME (Oakland)	30	30		16	1			MOUNTED WITH STOP SIGN
44+06.72	22.44' RT								1		EXISTING PEDESTRIAN SIGN
44+60.00	23.00' RT	W11-2 W16-7P	PEDESTRIAN DOWNWARD DIAGNOL ARROW	30	30	6.25	17			1	FLUORESCENT YELLOW GREEN
44+72.00	24.00' LT	W11-2 W16-7P	PEDESTRIAN DOWNWARD DIAGNOL ARROW	30	30	6.25	17				FLUORESCENT YELLOW GREEN
44+72.53	24.37' LT	N/A R8-3a	BURT SHELTER CARE NO PARKING	30	18		16	1			RELOCATE TO STA. 44+82.86
44+91.91	23.67' LT	N/A	MCT BUS SIGN	12	18		15	1			
45+01.51	23.24' RT	N/A	MCT BUS SIGN	12	18		15	1		1	
45+21.35	23.70' LT								1		EXISTING PEDESTRIAN SIGN
46+37.17	28.40' RT	R1-1 D3-1	STOP SIGN STREET NAME (Mayfield)	30	30		16	1			MOUNTED WITH STOP SIGN
46+41.39	22.42' LT	W11-2 W16-9P	PEDESTRIAN AHEAD	30	30	6.25	17				FLUORESCENT YELLOW GREEN
TOTAL						57	243	5	3	2	

- NOTES:
1. ALL SIGNS SHALL BE LOCATED PER HIGHWAY STANDARD 720006 UNLESS OTHERWISE DIRECTED BY THE ENGINEER.
 2. STREET NAME SIGNS SHALL BE GREEN AND TEXT SHALL BE PRINTED ON BOTH SIDES. THE ACTUAL LENGTH REQUIRED SHALL BE AS NEEDED TO ACCOMMODATE THE TEXT AND SHALL BE DETERMINED BY THE SIGN MANUFACTURER
 3. ALL PEDESTRIAN SIGNS SHALL BE FLUORESCENT YELLOW-GREEN (FYG) COLOR AND TYPE "AZ" SHEETING.
 4. ALL CHEVRON SIGNS SHALL BE PLACED IN LINE WITH AND AT APPROXIMATELY A RIGHT ANGLE TO APPROACHING TRAFFIC
 5. ALL CHEVRON SIGNS SHALL BE INSTALLED AT A MINIMUM HEIGHT OF 4 FEET, MEASURED VERTICALLY FROM THE BOTTOM OF THE SIGN TO THE ELEVATION OF THE NEAR EDGE OF THE TRAVELED WAY.

PAVING SCHEDULE

LOCATION	PAVEMENT REMOVAL (SQ YD)	PAVEMENT REPLACEMENT, SPECIAL (SQ YD)	HOT-MIX ASPHALT SURFACE REMOVAL (SPECIAL) (SQ YD)	BITUMINOUS MATERIALS (TACK COAT) (POUND)	HOT-MIX ASPHALT SURFACE COURSE IL-9.5, MIX "C", N50 (TON)	HOT-MIX ASPHALT BINDER COURSE IL-19.0, N50 (TON)
MILTON ROAD						
STA. 36+40.00 TO STA. 52+00.00			7715.8	5208.2	648.1	648.1
BROWN STREET						
STA. 39+93.67 - 27.20' LT TO STA. 40+52.01 - 33.96' LT	63.4	63.4				
STA. 40+05.26 - 34.35' LT TO STA. 40+44.74 - 52.43' LT			81.9	55.3	6.9	6.9
OAKLAND AVENUE						
STA. 43+89.44 - 23.13' LT TO STA. 44+54.61 - 41.79' LT	60.6	60.6				
STA. 44+03.29 - 32.02' LT TO STA. 44+55.44 - 31.78' LT			52.6	35.5	4.4	4.4
TOTAL	124	124	7,850	5,299	659	659

REVISIONS									
-----------	--	--	--	--	--	--	--	--	--

SMS Sheppard, Morgan & Schwaab, Inc.
ENGINEERS CONSULTING ENGINEERS AND LAND SURVEYORS
215 Market Street, Alton, IL 62002 618-462-9755 E-mail: mail@smsengineers.com
DESIGN FIRM # 184-000992

CITY OF ALTON, ILLINOIS
SECTION 21-00242-00-RS
MILTON ROAD
SCHEDULES

CONTRACT NO. 97845
F.A.U. RTE. 8962
REF. BK. PG.
JOB NO. 500718
DSN. BY: ANJ
DWN. BY: CAD
CHK. BY: DEG
DATE: JUNE, 2024
SCALE: N/A
SHEET 5 OF 18

PAVEMENT MARKING SCHEDULE

ITEM	QUANTITY	UNIT
MILTON ROAD		
THERMOPLASTIC PAVEMENT MARKING - LINE 4" (SOLID DOUBLE YELLOW)	4512	FOOT
THERMOPLASTIC PAVEMENT MARKING - LINE 4" (WHITE SKIP DASH)	598	FOOT
THERMOPLASTIC PAVEMENT MARKING - LINE 4" (WHITE LANE LINE)	115	FOOT
TOTAL 4" THERMOPLASTIC PAVEMENT MARKING	5225	FOOT
THERMOPLASTIC PAVEMENT MARKING - LINE 6" (WHITE CROSSWALK)	258	FOOT
TOTAL 6" THERMOPLASTIC PAVEMENT MARKING	258	FOOT
THERMOPLASTIC PAVEMENT MARKING - LINE 12" (YELLOW DIAGONALS)	290	FOOT
THERMOPLASTIC PAVEMENT MARKING - LINE 12" (WHITE STOP BAR)	33	FOOT
TOTAL 12" THERMOPLASTIC PAVEMENT MARKING	323	FOOT
THERMOPLASTIC PAVEMENT MARKING - LINE 24" (WHITE CROSSWALK BARS)	72	FOOT
TOTAL 24" THERMOPLASTIC PAVEMENT MARKING	72	FOOT
THERMOPLASTIC PAVEMENT MARKING - LETTERS & SYMBOLS	31	SQ FT
TOTAL LETTERS & SYMBOLS THERMOPLASTIC PAVEMENT MARKING	31	SQ FT
MODIFIED URETHANE PAVEMENT MARKING - LINE 6" (WHITE CROSSWALK)	467	FOOT
TOTAL 6" MODIFIED URETHANE PAVEMENT MARKING	467	FOOT
MODIFIED URETHANE PAVEMENT MARKING - LINE 12" (WHITE STOP BAR)	65	FOOT
TOTAL 12" MODIFIED URETHANE PAVEMENT MARKING	65	FOOT
RAISED REFLECTIVE PAVEMENT MARKER (ONE-WAY CRYSTAL @ 3' CTS.)	8	EACH
RAISED REFLECTIVE PAVEMENT MARKER (ONE-WAY CRYSTAL @ 20' CTS.)	7	EACH
RAISED REFLECTIVE PAVEMENT MARKER (ONE-WAY CRYSTAL @ 40' CTS.)	10	EACH
RAISED REFLECTIVE PAVEMENT MARKER (TWO-WAY AMBER @ 40' CTS.)	23	EACH
TOTAL RAISED REFLECTIVE PAVEMENT MARKER	48	EACH

PAVEMENT PATCHING SCHEDULE

STATION TO STATION	LANE	LENGTH (FOOT)	WIDTH (FOOT)	CLASS D PATCHES, TYPE I, 11 INCH (SQ YD)	CLASS D PATCHES, TYPE II, 11 INCH (SQ YD)	CLASS D PATCHES, TYPE III, 11 INCH (SQ YD)	CLASS D PATCHES, TYPE IV, 11 INCH (SQ YD)	CLASS C PATCHES, TYPE II, 8 INCH (SPECIAL) (SQ YD)	CLASS B PATCHES, TYPE IV, 8 INCH (SQ YD)	DOWEL BARS 1 1/4" (EACH)	WELDED WIRE REINFORCEMENT (SQ YD)	TIE BARS 3/4" (EACH)	SAW CUTS (FOOT)	
MAYFIELD AVENUE														
45+50	45+69							11				13	39	
ROGERS AVENUE														
49+29	49+68								42	36	42	12	121	
49+68	49+91								46	40	46	8	98	
MILTON ROAD														
38+11	38+25	EB	14	4		6.2								
40+70	40+76		6	15		10.0								
41+43	41+47	NB	4	14		6.2								
42+47	42+51	SBOL	4	14		6.2								
42+48	42+53	NB	5	14		7.8								
43+40	43+46	NBOL	6	15		10.0								
44+68	44+73	NBOL	5	11		6.1								
44+68	44+73	NBIL	5	11		6.1								
44+68	44+73	SBOL	5	11		6.1								
44+68	44+73	SBIL	5	11		6.1								
44+73	45+11	CL	38	5			21.1							
47+82	47+87	NBOL	5	7	3.9									
47+82	47+87	NBIL	5	7	3.9									
47+82	47+87	SBOL	5	11		6.1								
47+82	47+87	SBIL	5	11		6.1								
48+56	48+83	CL	8	27			24.0							
50+36	50+47	SBIL	11	6		7.3								
50+63	51+01	SBOL	38	11				46.4						
50+97	51+01	SBIL	11	4	4.9									
51+46	51+51	SBOL	11	5		6.1								
51+46	51+51	SBIL	11	5		6.1								
TOTAL					13	103	45	46	11	88	76	88	33	258

- NOTES: 1. THE EXACT LOCATION OF PAVEMENT PATCHES WILL BE LAID OUT IN THE FIELD BY THE ENGINEER.
2. LANE ABBREVIATIONS ARE AS FOLLOWS: NB=NORTHBOUND, EB=EASTBOUND, SB=SOUTHBOUND, IL=INSIDE LANE, OL=OUTSIDE LANE, CL = CENTER LINE

CURB SCHEDULE

LOCATION	CONCRETE CURB, TY B (SPECIAL) (FOOT)
MILTON ROAD	
STA. 39+93.06 - 26.92' LT TO STA. 40+09.09 - 39.22' LT	22.1
STA. 40+44.74 - 52.43' LT TO STA. 40+72.03 - 24.21' LT	43.1
STA. 43+87.49 - 23.08' LT TO STA. 44+01.52 - 29.76' LT	16.3
STA. 44+54.96 - 32.80' LT TO STA. 44+69.48 - 22.79' LT	18.6
STA. 44+61.59 - 21.85' RT TO STA. 45.09.39 - 22.10' RT	47.6
STA. 44+87.83 - 22.57' LT TO STA. 45+02.56 - 22.42' LT	14.9
STA. 45+50.33 - 25.50' RT TO STA. 45+67.50 - 35.89' RT	26.0
STA. 46+35.15 - 34.31' RT TO STA. 46+48.10 - 22.24' RT	22.9
STA. 49+26.72 - 53.47' LT TO STA. 49+36.26 - 29.06' LT	29.6
STA. 49+37.11 - 22.11' RT TO STA. 49+49.99 - 29.65' RT	15.6
STA. 50+05.13 - 31.24' RT TO STA. 50+16.39 - 22.85' RT	14.3
STA. 50+19.49 - 31.35' LT TO STA. 50+41.00 - 22.11' LT	23.7
TOTAL	295

SIDEWALK SCHEDULE

LOCATION	PORTLAND CEMENT CONCRETE SIDEWALK 4 INCH (SQ FT)	PORTLAND CEMENT CONCRETE SIDEWALK 8 INCH (SQ FT)
MILTON ROAD		
STA. 39+68.96 - 56.53' LT TO STA. 40+02.66 - 33.50' LT	237.6	
STA. 40+45.38 - 52.47' LT TO STA. 40+80.92 - 30.04' LT	232.9	
STA. 43+83.44 - 25.01' LT TO STA. 44+00.81 - 29.76' LT	68.8	
STA. 44+54.27 - 28.91' RT TO STA. 44+61.59 - 21.85' RT		52.6
STA. 44+58.15 - 28.78' LT TO STA. 45+07.50 - 23.72' LT	283.3	
STA. 44+61.59 - 21.85' RT TO STA. 45+09.42 - 29.26' RT	328.5	
STA. 45+09.73 - 22.10' RT TO STA. 45+15.48 - 29.24' RT		42.5
STA. 45+50.09 - 30.50' RT TO STA. 45+66.93 - 36.01' RT		72.2
STA. 45+50.23 - 25.50' RT TO STA. 45+65.23 - 30.41' RT	83.5	
STA. 46+34.24 - 28.67' RT TO STA. 46+58.08 - 24.31' RT	122.7	
STA. 49+23.22 - 22.00' LT TO STA. 49+35.88 - 28.49' LT		65.1
STA. 49+27.14 - 24.09' RT TO STA. 49+49.31 - 29.65' RT	100.7	
STA. 50+04.61 - 44.66' RT TO STA. 50+35.88 - 38.30' RT	281.6	
STA. 50+21.83 - 30.61' LT TO STA. 50+48.99 - 24.28' LT	121.8	
TOTAL	1,861	232

REVISIONS														
-----------	--	--	--	--	--	--	--	--	--	--	--	--	--	--

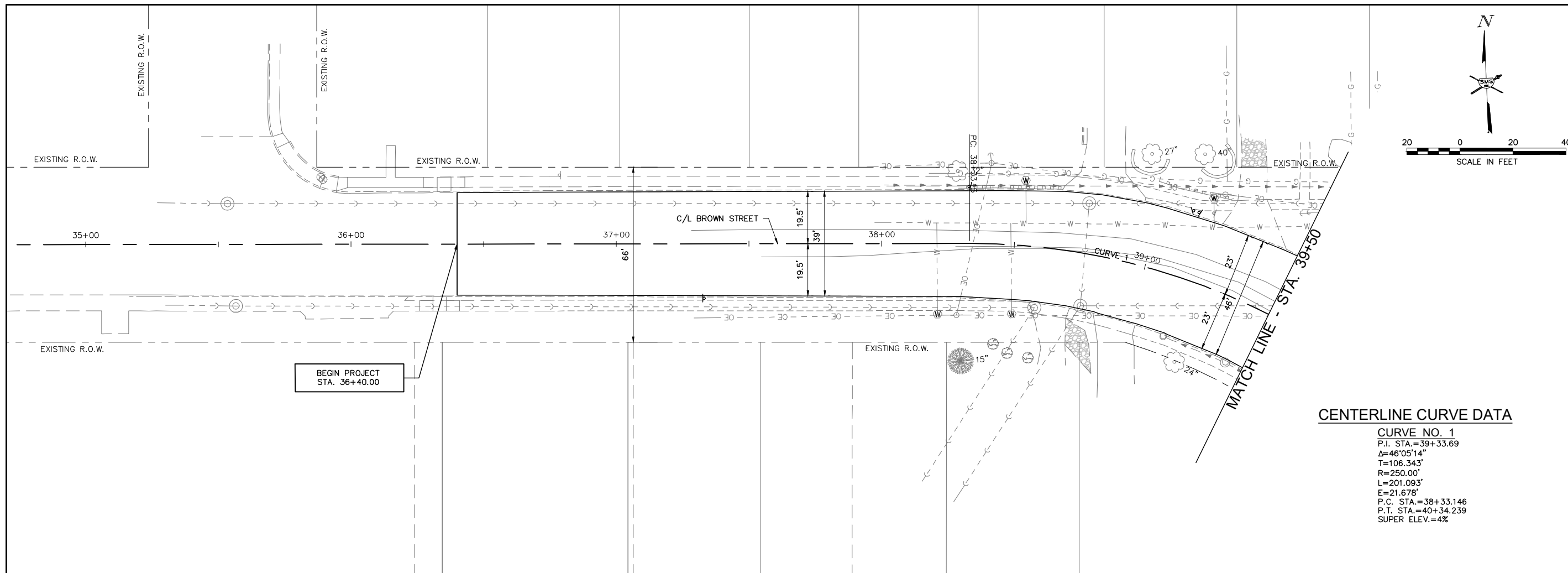
SMS Sheppard, Morgan & Schwaab, Inc.
CONSULTING ENGINEERS AND LAND SURVEYORS
2715 Market Street, Alton, IL 62002 618.465.9755 E-mail: mail@smsengineers.com
ENGINEERS DESIGN FIRM # 184-000992

CITY OF ALTON, ILLINOIS
SECTION 21-00242-00-RS
MILTON ROAD
SCHEDULES

CONTRACT NO. 97845
F.A.U. RTE. 8962

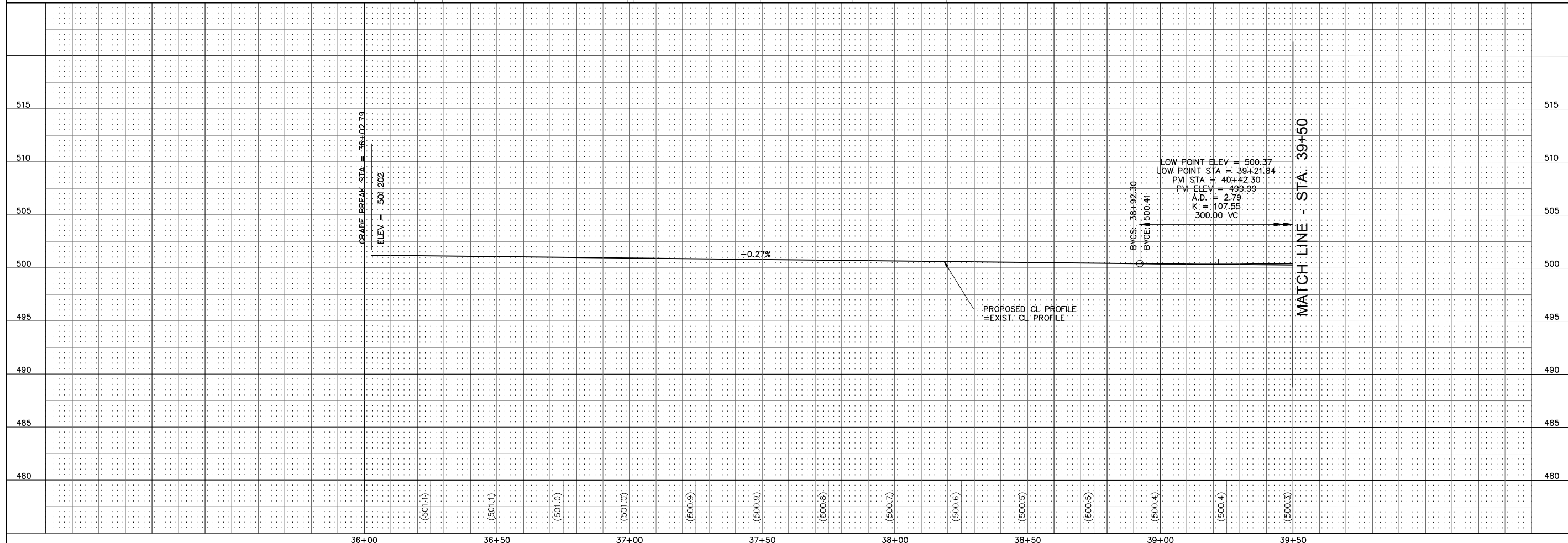
REF. BK. PG.
JOB NO. 500718
DSN. BY: ANJ
DWN. BY: CAD
CHK. BY: DEG
DATE: JUNE, 2024

SCALE: N/A
SHEET 6 OF 18



CENTERLINE CURVE DATA

CURVE NO. 1
 P.I. STA. = 39+33.69
 $\Delta = 46^{\circ}05'14''$
 T = 106.343'
 R = 250.00'
 L = 201.093'
 E = 21.678'
 P.C. STA. = 38+33.146
 P.T. STA. = 40+34.239
 SUPER ELEV. = 4%



REVISIONS

SMS Sheppard, Morgan & Schwab, Inc.
 CONSULTING ENGINEERS AND LAND SURVEYORS
 215 Market Street, Alton, IL 62002 618-462-9755 E-mail: mail@smsengineers.com
 DESIGN FIRM # 184-000992

CITY OF ALTON, ILLINOIS
 SECTION 21-00242-00-RS
 MILTON ROAD
 PLAN AND PROFILE

CONTRACT NO. 97845
 F.A.U. RTE. 8962

REF. BK.	PG.
JOB NO. 500718	
DSN. BY: ANJ	
DWN. BY: CAD	
CHK. BY: DEG	
DATE: JUNE, 2024	

SCALE: HORZ: 1"=20'
 VERT: 1"=5'

SHEET 7 OF 18

CONSTRUCTION NOTES

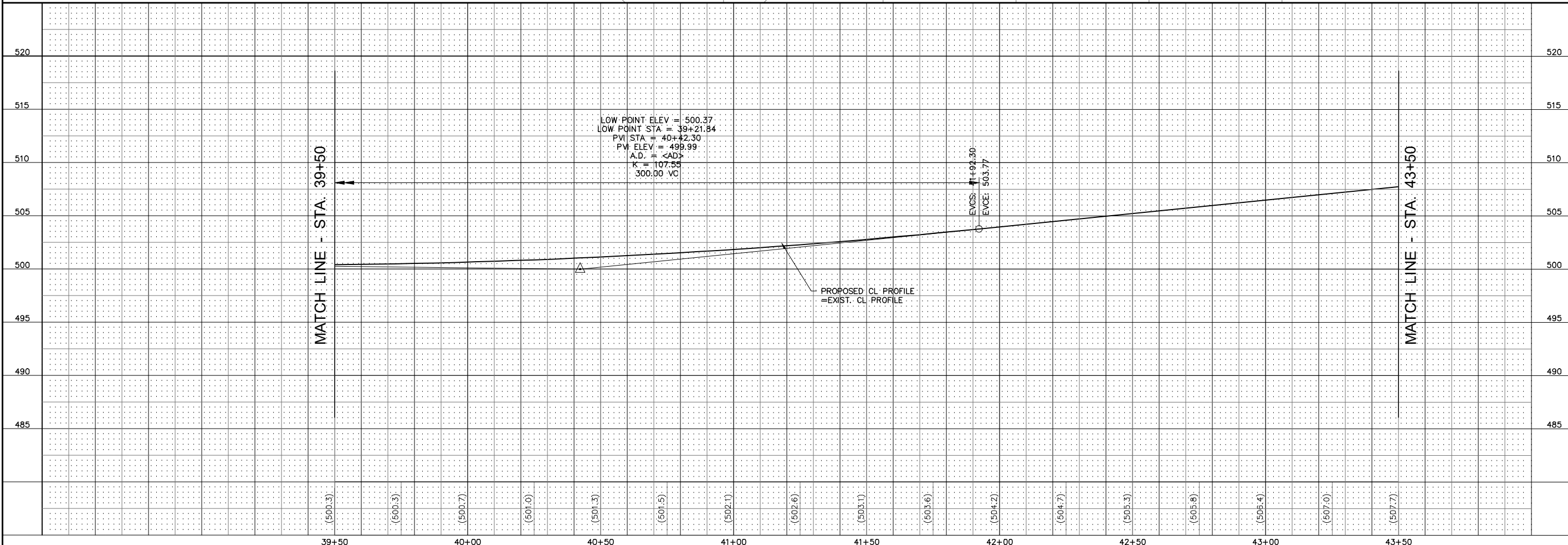
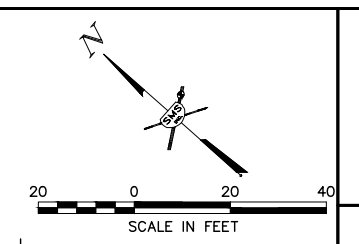
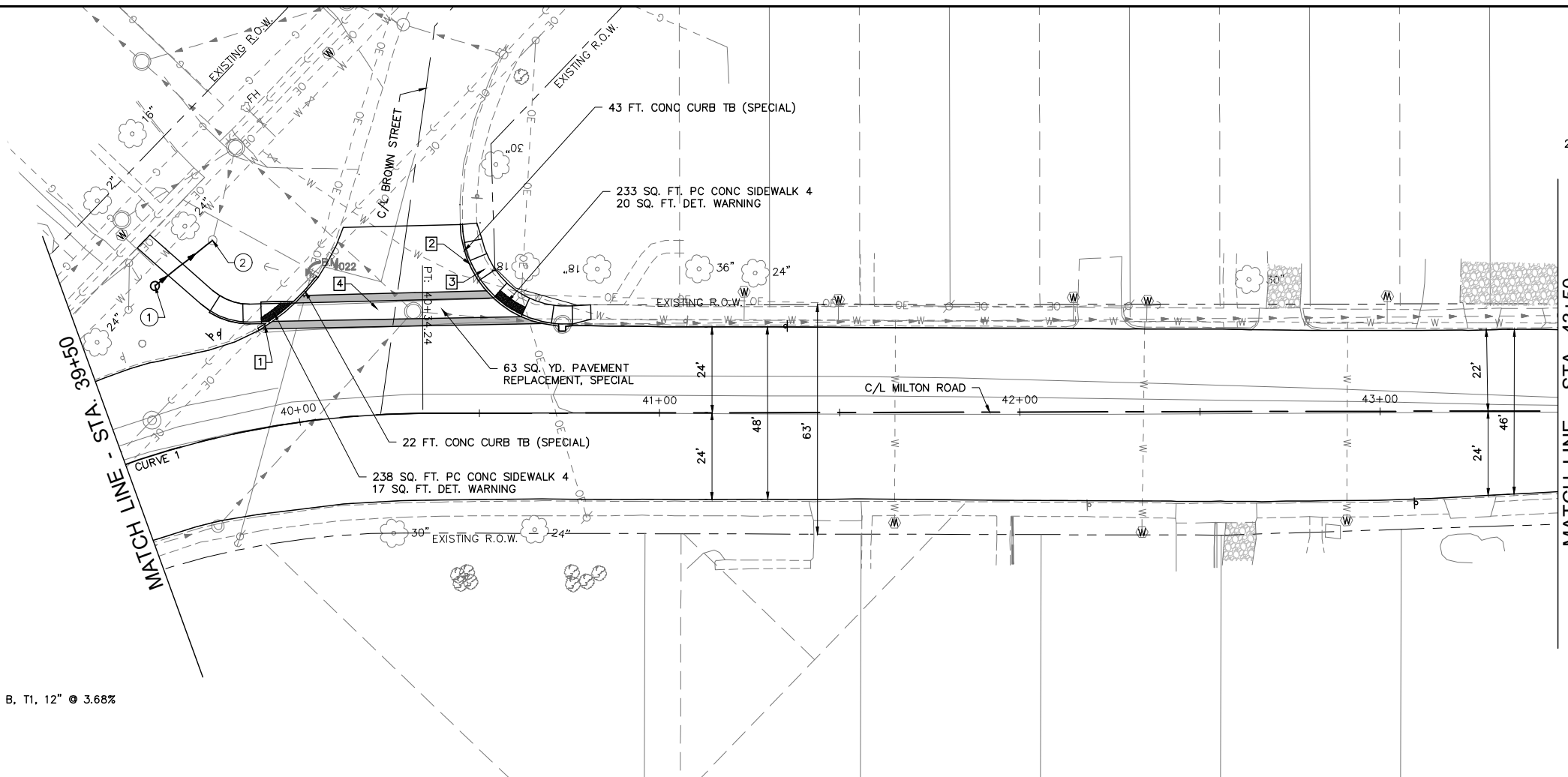
- 1 22 FT. CURB REMOVAL (SPECIAL)
- 2 43 FT. CURB REMOVAL (SPECIAL)
- 3 190 SQ. FT. SIDEWALK REMOVAL
- 4 63 SQ. YD. PAVEMENT REMOVAL

DRAINAGE STRUCTURES

- 1 INLETS TA T8G
STA. 39+70.60, 45.07' LT.
TOP = 499.5
F.L. = 497.0
- 2 EX. BRICK INLET
STA. 39+86.00, 53.84' LT.
TOP = 499.0
12" W. F.L. = 496.25
12" NE F.L. = 495.5

STORM SEWERS

- 1 1 TO 2 20 FT. - STORM SEWERS, CL B, T1, 12" @ 3.68%
2 CU. YD. TRENCH BACKFILL



REVISIONS

SMS ENGINEERS
Sheppard, Morgan & Schwaab, Inc.
CONSULTING ENGINEERS AND LAND SURVEYORS
215 Market Street, Alton, IL 62002 618.462.9755 E-mail: mail@smsengineers.com
DESIGN FIRM # 184-000992

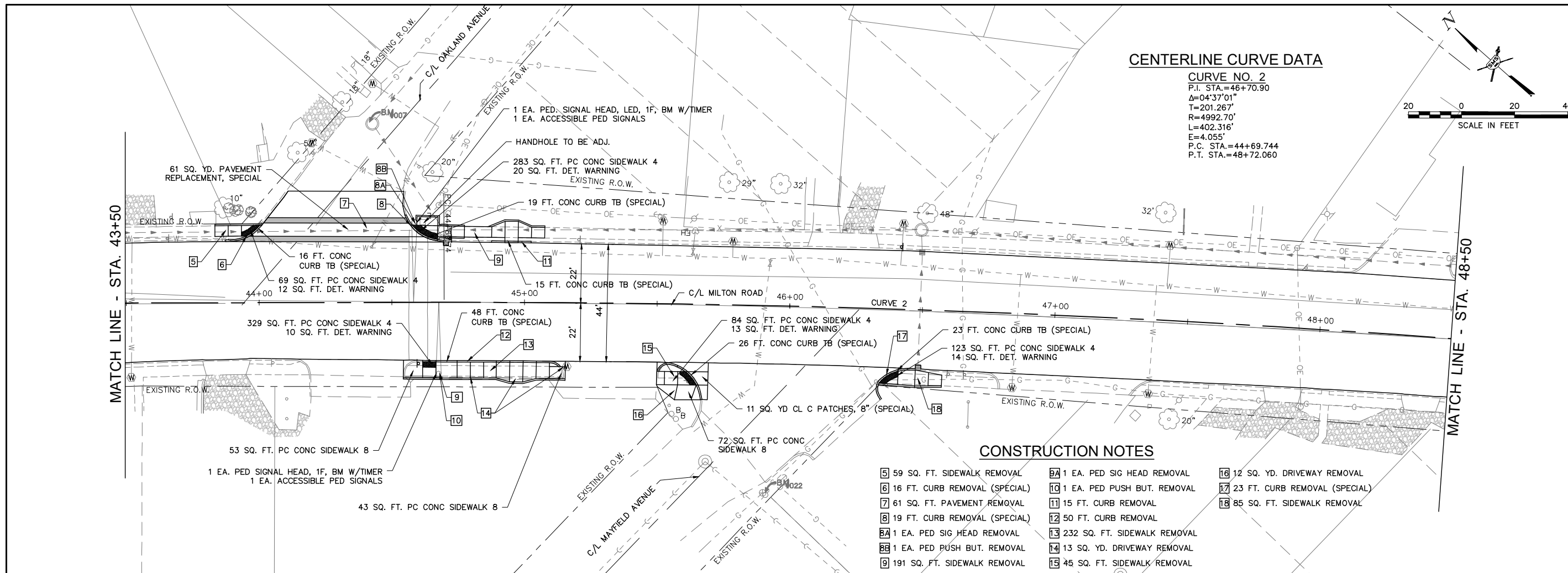
CITY OF ALTON, ILLINOIS
SECTION 21-00242-00-RS
MILTON ROAD
PLAN AND PROFILE

CONTRACT NO.
97845
F.A.U. RTE. 8962

REF. BK.	PG.
JOB NO. 500718	
DSN. BY: ANJ	
DWN. BY: CAD	
CHK. BY: DEG	
DATE: JUNE, 2024	

SCALE: HORZ: 1"=20'
VERT: 1"=5'

SHEET 8 OF 18



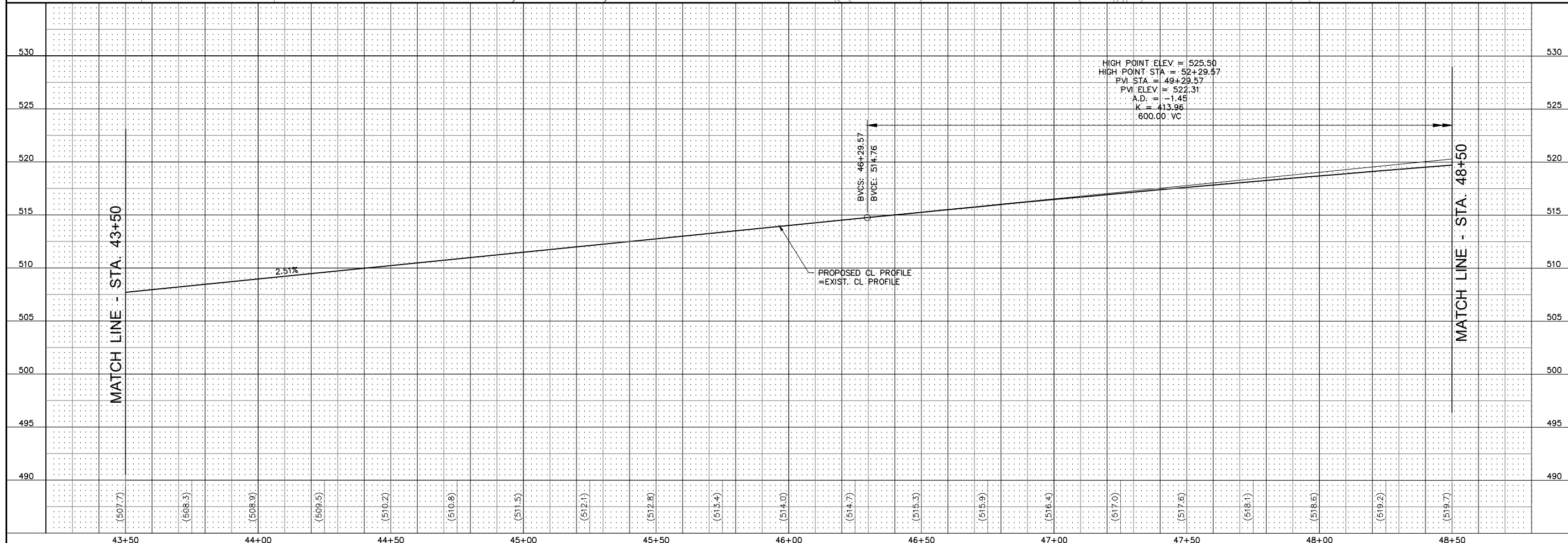
CENTERLINE CURVE DATA

CURVE NO. 2
 P.I. STA.=46+70.90
 $\Delta=04^{\circ}37'01''$
 $T=201.267'$
 $R=4992.70'$
 $L=402.316'$
 $E=4.055'$
 P.C. STA.=44+69.744
 P.T. STA.=48+72.060



CONSTRUCTION NOTES

- | | | |
|---------------------------------|---------------------------------|----------------------------------|
| 5 59 SQ. FT. SIDEWALK REMOVAL | 8A 1 EA. PED SIG HEAD REMOVAL | 16 12 SQ. YD. DRIVEWAY REMOVAL |
| 6 16 FT. CURB REMOVAL (SPECIAL) | 10 1 EA. PED PUSH BUT. REMOVAL | 17 23 FT. CURB REMOVAL (SPECIAL) |
| 7 61 SQ. FT. PAVEMENT REMOVAL | 11 15 FT. CURB REMOVAL | 18 85 SQ. FT. SIDEWALK REMOVAL |
| 8 19 FT. CURB REMOVAL (SPECIAL) | 12 50 FT. CURB REMOVAL | |
| 8A 1 EA. PED SIG HEAD REMOVAL | 13 232 SQ. FT. SIDEWALK REMOVAL | |
| 8B 1 EA. PED PUSH BUT. REMOVAL | 14 13 SQ. YD. DRIVEWAY REMOVAL | |
| 9 191 SQ. FT. SIDEWALK REMOVAL | 15 45 SQ. FT. SIDEWALK REMOVAL | |



REVISIONS

SMS Sheppard, Morgan & Schwab, Inc.
 CONSULTING ENGINEERS AND LAND SURVEYORS
 215 Market Street, Alton, IL 62002 618-462-9755 E-mail: mail@smsengineers.com
ENGINEERS DESIGN FIRM # 184-000992

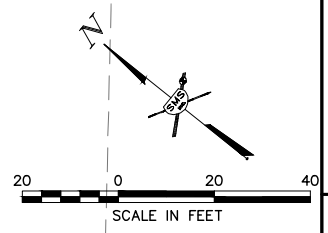
CITY OF ALTON, ILLINOIS
 SECTION 21-00242-00-RS
 MILTON ROAD
 PLAN AND PROFILE

CONTRACT NO. 97845
 F.A.U. RTE. 8962

REF. BK.	PG.
JOB NO. 500718	
DSN. BY: ANJ	
DWN. BY: CAD	
CHK. BY: DEG	
DATE: JUNE, 2024	

SCALE: HORZ: 1"=20'
 VERT: 1"=5'

SHEET 9 OF 18



CONSTRUCTION NOTES

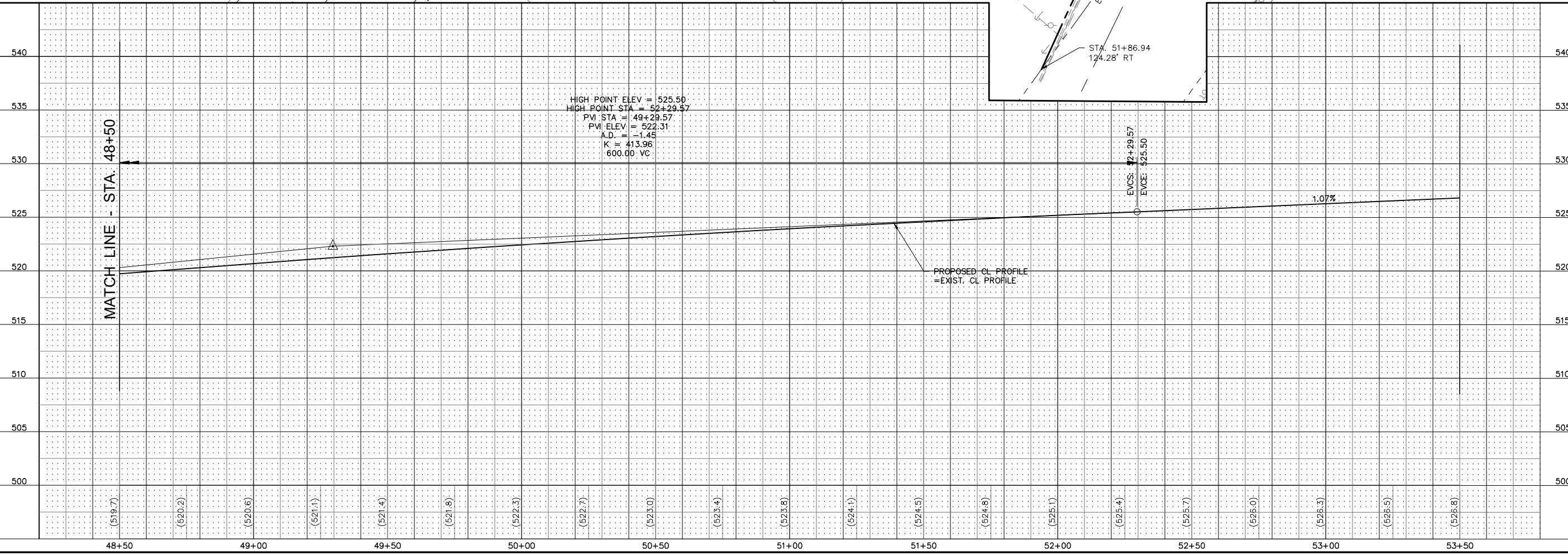
- 19 46 SQ. FT. SIDEWALK REMOVAL
- 20 30 FT. CURB REMOVAL (SPECIAL)
- 21 16 FT. CURB REMOVAL (SPECIAL)
- 22 76 SQ. FT. SIDEWALK REMOVAL
/SPECIAL)
- 23 24 FT. CURB REMOVAL (SPECIAL)
- 24 263 SQ. FT. SIDEWALK REMOVAL
- 25 14 FT. CURB REMOVAL (SPECIAL)
- 26 79 SQ. FT. SIDEWALK REMOVAL

CENTERLINE CURVE DATA

CURVE NO. 3
 P.I. STA.=53+41.59
 $\Delta=06^{\circ}36'60''$
 $T=295.655'$
 $R=5114.655'$
 $L=590.654'$
 $E=8.538'$
 P.C. STA.=50+46.264
 P.T. STA.=56+36.917

MATCH LINE - STA. 48+50

END PROJECT STA. 52+00.00



REVISIONS

--	--

SMS Sheppard, Morgan & Schwab, Inc.
 CONSULTING ENGINEERS AND LAND SURVEYORS
 ENGINEERS
715 Market Street, Alton, IL 62002 618-462-9755 E-mail: mail@smsengineers.com

CITY OF ALTON, ILLINOIS
 SECTION 21-00242-00-PS
 MILTON ROAD
 PLAN AND PROFILE

CONTRACT NO.
 97845
 F.A.U. RTE. 8962

REF. BK.	PG.
JOB NO. 500718	
DSN. BY: ANJ	
DWN. BY: CAD	
CHK. BY: DEG	
DATE: JUNE, 2024	

SCALE: HORZ: 1"=20'
 VERT: 1"=5'

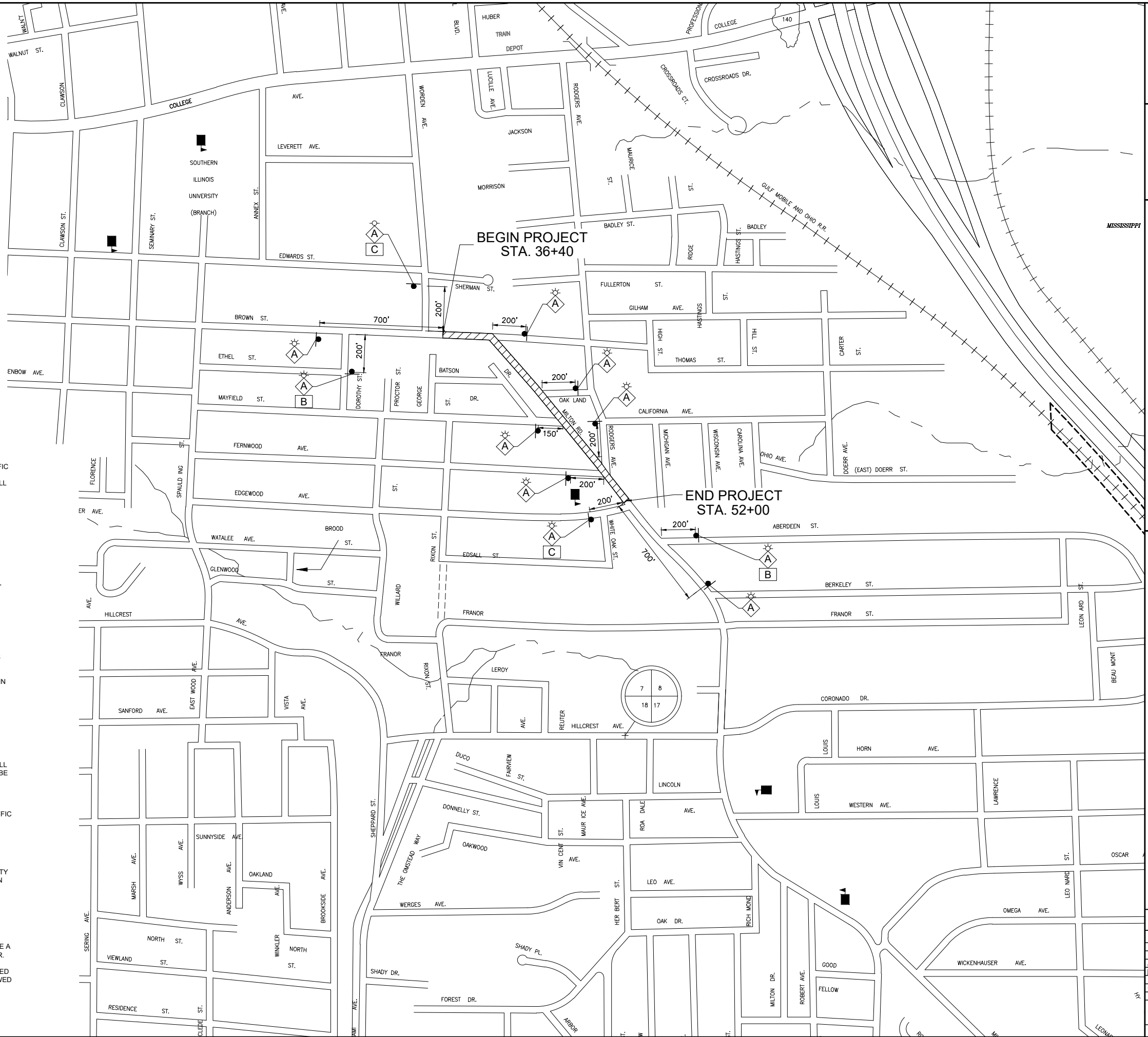


TRAFFIC CONTROL LEGEND

- WORK AREA
- TYPE III BARRICADE WITH REFLECTORIZED STRIPING ON BOTH SIDES WITH FLASHING LIGHTS
- CONE, DRUM OR BARRICADE
- SIGN "ROAD CONSTRUCTION AHEAD" W20-1(0) - 48" x 48" WITH MONODIRECTIONAL FLASHING LIGHT
- SIGN BLACK ARROW ON ORANGE BACKGROUND 24" x 18"
- SIGN BLACK ARROW ON ORANGE BACKGROUND 24" x 18"

TRAFFIC CONTROL NOTES

1. THE CONTRACTOR SHALL PROVIDE THE TRAFFIC CONTROL SHOWN ON THE GENERAL TRAFFIC CONTROL PLAN AT ALL TIMES DURING THE CONSTRUCTION OF THIS PROJECT. ADDITIONAL TRAFFIC CONTROL SHALL BE PROVIDED AS SPECIFIED BELOW AND IN ACCORDANCE WITH THE SPECIFIED HIGHWAY STANDARDS. THE COST FOR ALL TRAFFIC CONTROL REQUIRED FOR THIS PROJECT SHALL BE INCLUDED IN THE COST OF TRAFFIC CONTROL AND PROTECTION, (SPECIAL).
2. AT TIMES WHEN ALL TRAFFIC LANES ARE OPEN, PROVIDE TRAFFIC CONTROL AS NEEDED PER HIGHWAY STANDARD 701006 AND 701011.
3. MILTON RD. SHALL REMAIN OPEN TO THRU TRAFFIC AT ALL TIMES. ONE TRAFFIC LANE WILL BE ALLOWED TO BE CLOSED AS NEEDED AND AS DESCRIBED BELOW.
 - A. FOR SPOT LOCATIONS THAT ARE LESS THAN 1 BLOCK LONG AND FOR 1 HOUR OR LESS, PROVIDE TRAFFIC CONTROL PER HIGHWAY STANDARD 701301.
 - B. WHEN A TRAFFIC LANE IS CLOSED PROVIDE TRAFFIC CONTROL PER HIGHWAY STANDARD 701501, 701502, 701606, 701611 AND 701701.
 - C. DURING PAVEMENT PATCHING OPERATIONS, THE CONTRACTOR SHALL PROVIDE ADDITIONAL CONES, DRUMS, OR BARRICADES TO PROTECT EACH PATCH AS DIRECTED BY THE ENGINEER.
4. VARIOUS CONSTRUCTION OPERATIONS WILL INTERFERE WITH TRAFFIC ON SIDE STREETS. THE CONTRACTOR SHALL HAVE THE OPTION TO EITHER KEEP SIDE STREETS OPEN TO TRAFFIC AND PROVIDE A FLAGGER OR TO CLOSE THE SIDE STREETS AND PROVIDE PROPER SIGNS AND BARRICADES. IF SIDE STREETS ARE CLOSED, NO MORE THAN 3 OR 4 CONSECUTIVE SIDE STREETS SHALL BE CLOSED AT THE SAME TIME. TRAFFIC CONTROL AT SIDE STREETS FOR EITHER OPTION SHALL BE PROVIDED IN ACCORDANCE WITH THE HIGHWAY STANDARDS. THE COST OF ALL SIDE STREET TRAFFIC CONTROL INCLUDING FLAGGERS, SIGNS AND BARRICADES SHALL BE INCLUDED IN THE COST OF TRAFFIC CONTROL AND PROTECTION, (SPECIAL). NO ADDITIONAL PAYMENT WILL BE MADE FOR TRAFFIC CONTROL AT SIDE STREETS.
 - A. TYPE III BARRICADES SHALL BE USED ON BOTH SIDES OF PAVEMENT PATCHES. THE MINIMUM NUMBER OF TYPE III BARRICADES USED ON EACH SIDE SHALL BE ONE PER TRAFFIC LANE.
 - B. A TYPE II BARRICADE WITH A "ROAD CLOSED AHEAD" SIGN SHALL BE PROVIDED AT THE END OF EACH SIDE STREET AS DIRECTED BY THE ENGINEER.
5. FOR SIDEWALK REMOVAL AND REPLACEMENT, TRAFFIC CONTROL FOR SIDEWALK CLOSURES SHALL BE PROVIDED PER HIGHWAY STANDARD 701801. SIDEWALK REMOVAL AND REPLACEMENT SHALL BE SEQUENCED AS MUCH AS POSSIBLE TO ALWAYS ALLOW AN ACCESSIBLE ROUTE TO PRIVATE PROPERTY AND BUSINESSES.
6. WHERE A HIGHWAY STANDARD REQUIRES A "ROAD CONSTRUCTION AHEAD" SIGN, THIS REQUIREMENT WILL BE CONSIDERED FULFILLED BY THE SIGNS REQUIRED ON THE GENERAL TRAFFIC CONTROL PLAN.
7. ALL HAZARDS WITHIN WORK ZONES OPEN TO TRAFFIC SHALL BE PROTECTED WITH TYPE I BARRICADES OR DRUMS WITH FLASHING LIGHTS IF LESS THAN 100' IN LENGTH. IF GREATER THAN 100' IN LENGTH, LIGHTS SHALL BE STEADY BURN.
8. CONTRACTOR SHALL NOTIFY THE CITY OF ALTON PUBLIC WORKS (618-463-3530), ALTON COMMUNITY UNIT SCHOOL DISTRICT 11 (618-474-2800), U.S. POST OFFICE - ALTON (618-275-8777), CITY OF ALTON FIRE (618-463-3565) AND POLICE DEPARTMENT (618-463-3505) AND MADISON COUNTY TRANSIT (618-797-4636) AT LEAST ONE WEEK PRIOR TO ANY STREET CLOSURE. THE CONTRACTOR SHALL ALSO NOTIFY THESE AGENCIES THE DAY THE STREET IS RE-OPENED.
9. ALL CONSTRUCTION SIGNS SHALL MEET THE REQUIREMENTS OF THE LATEST EDITION OF THE "MANUAL ON UNIFORM TRAFFIC CONTROL DEVICES FOR STREETS AND HIGHWAYS".
10. IF THE CONTRACTOR WISHES TO DEVIATE FROM THIS TRAFFIC CONTROL PLAN, HE SHALL PROVIDE A REVISED TRAFFIC CONTROL PLAN IN WRITING FOR THE REVIEW AND APPROVAL OF THE ENGINEER.
11. DURING CONSTRUCTION, ALL OPEN EXCAVATIONS DUE TO PATCHING OPERATIONS SHALL BE FILLED WITH HOT-MIX ASPHALT BY THE END OF EACH WORK DAY. OPEN EXCAVATION WILL NOT BE ALLOWED TO REMAIN OVERNIGHT.



NO.	DATE	DESCRIPTION

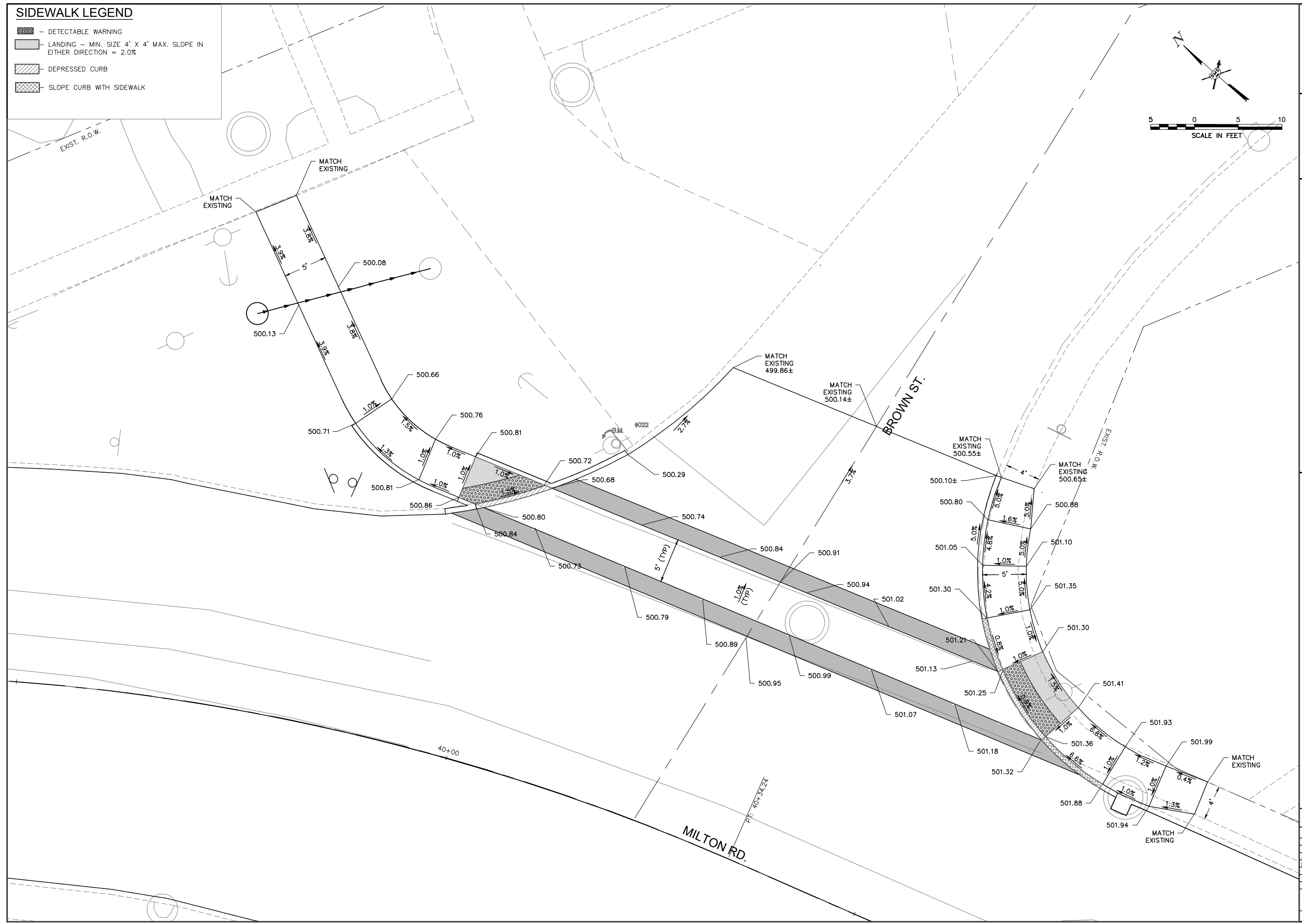
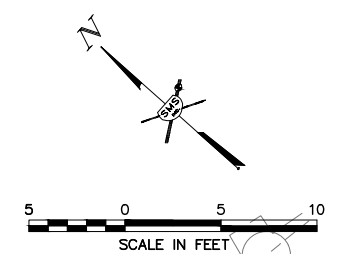
SMS Sheppard, Morgan & Schwab, Inc.
 CONSULTING ENGINEERS AND LAND SURVEYORS
 215 Market Street P.O. Box E, Alton, IL 62002 618-462-9755 E-mail: mail@smsengineers.com
ENGINEERS DESIGN FIRM # 184-000992

CITY OF ALTON, ILLINOIS
 SECTION 21-00242-00-RS
 MILTON ROAD
 TRAFFIC CONTROL PLAN

CONTRACT NO. 97845	
F.A.U. RTE. 8962	
REF. BK.	PG.
JOB NO. 500718	
DSN. BY: ANJ	
DWN. BY: CAD	
CHK. BY: DEG	
DATE: JUNE, 2024	
SCALE: 1" = 300'	
SHEET 11 OF 18	

SIDEWALK LEGEND

- DETECTABLE WARNING
- LANDING - MIN. SIZE 4' X 4' MAX. SLOPE IN EITHER DIRECTION = 2.0%
- DEPRESSED CURB
- SLOPE CURB WITH SIDEWALK



REVISIONS

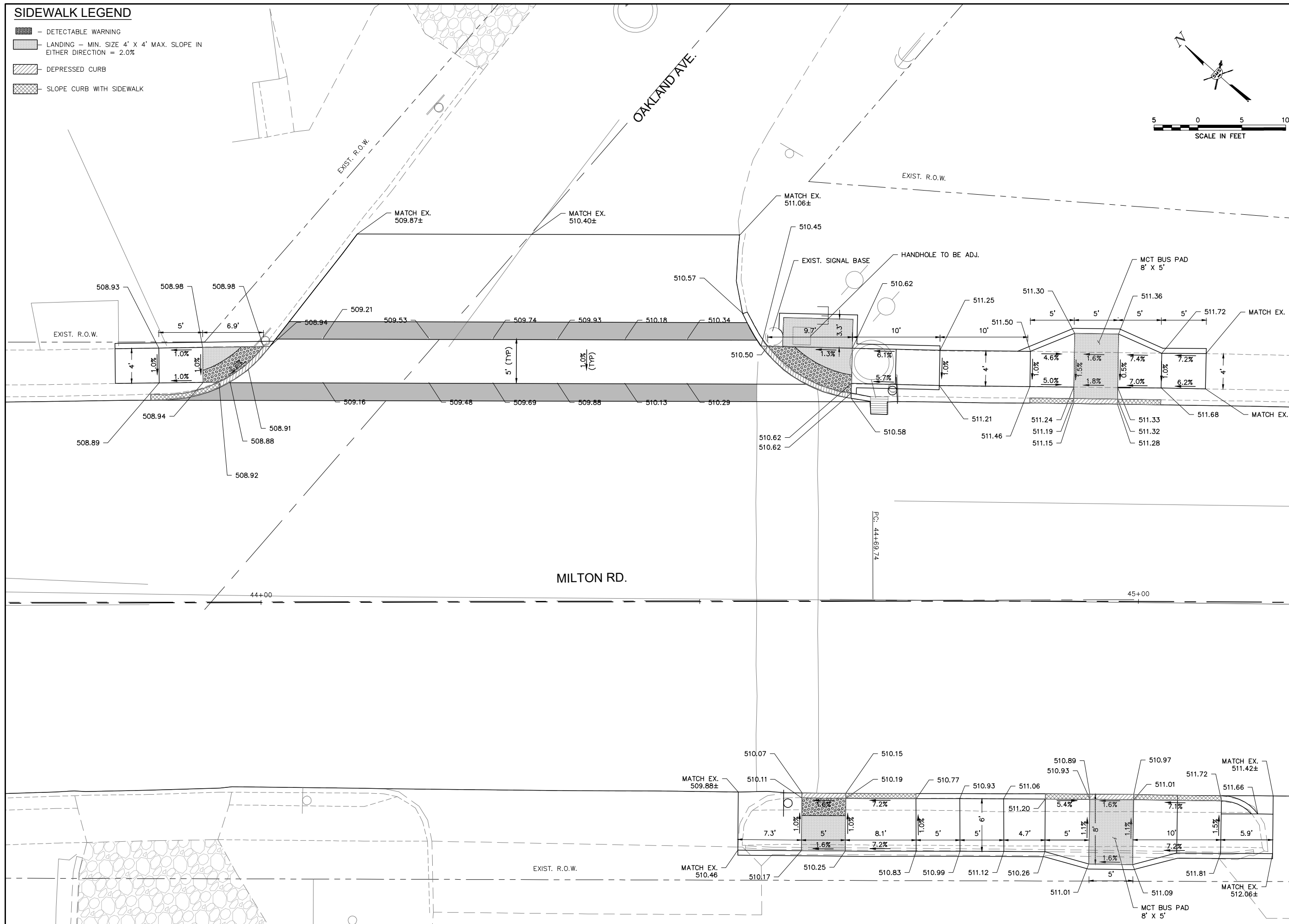
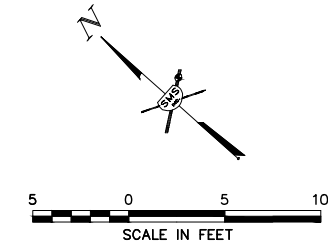
SMS Sheppard, Morgan & Schwab, Inc.
 CONSULTING ENGINEERS AND LAND SURVEYORS
 215 Market Street, Alton, IL 62002 618-462-9755 Email: mail@smsengineers.com
ENGINEERS DESIGN FIRM # 184-000992

CITY OF ALTON, ILLINOIS
 SECTION 21-00242-00-RS
 MILTON ROAD
 CONSTRUCTION DETAILS

CONTRACT NO. 97845	
F.A.U. RTE. 8962	
REF. BK.	PG.
JOB NO. 500718	
DSN. BY: ANJ	
DWN. BY: CDP	
CHK. BY: DEG	
DATE: JUNE, 2024	
SCALE: 1" = 5'	
SHEET 12 OF 18	

SIDEWALK LEGEND

- DETECTABLE WARNING
- LANDING - MIN. SIZE 4' X 4' MAX. SLOPE IN EITHER DIRECTION = 2.0%
- DEPRESSED CURB
- SLOPE CURB WITH SIDEWALK







REVISIONS

SMS Sheppard, Morgan & Schwab, Inc.
 CONSULTING ENGINEERS AND LAND SURVEYORS
 215 Market Street, Alton, IL 62002 618-462-2755 Email: mail@smsengineers.com
ENGINEERS DESIGN FIRM # 184-000992

CITY OF ALTON, ILLINOIS
 SECTION 21-00242-00-RS
 MILTON ROAD
 CONSTRUCTION DETAILS

CONTRACT NO. 97845	
F.A.U. RTE. 8962	
REF. BK.	PG.
JOB NO. 500718	
DSN. BY: ANJ	
DWN. BY: CDP	
CHK. BY: DEG	
DATE: JUNE, 2024	
SCALE: 1" = 5'	
SHEET 13 OF 18	

SIDEWALK LEGEND

-  - DETECTABLE WARNING
-  - LANDING - MIN. SIZE 4' X 4' MAX. SLOPE IN EITHER DIRECTION = 2.0%
-  - DEPRESSED CURB
-  - SLOPE CURB WITH SIDEWALK



REVISIONS

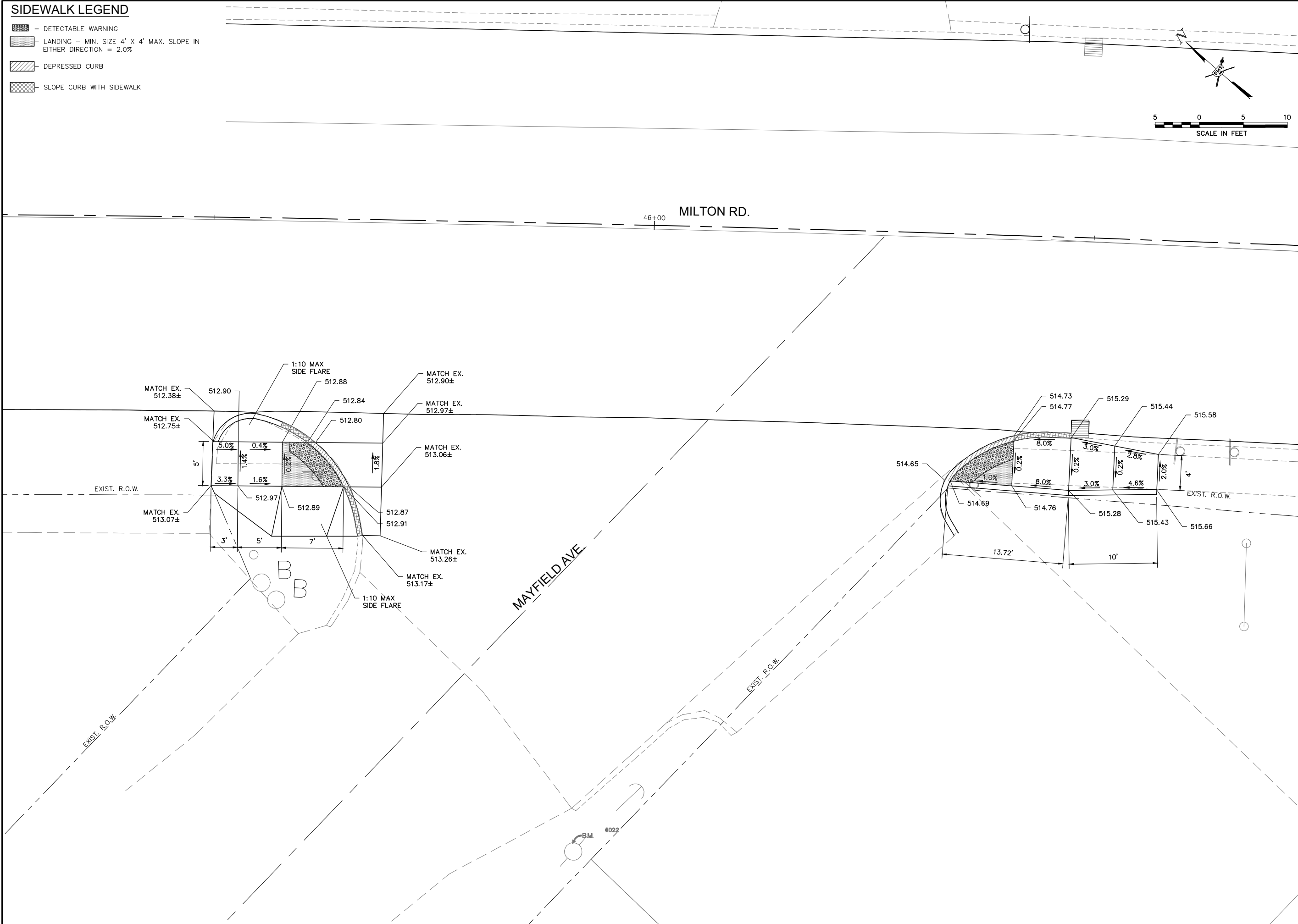
SMS ENGINEERS
 Sheppard, Morgan & Schwaab, Inc.
 CONSULTING ENGINEERS AND LAND SURVEYORS
 215 Market Street, Alton, IL 62002 618-462-9755 Email: mail@smsengineers.com
 DESIGN FIRM # 184-000992

CITY OF ALTON, ILLINOIS
 SECTION 21-00242-00-RS
 MILTON ROAD
 CONSTRUCTION DETAILS





CONTRACT NO. 97845
 F.A.U. RTE. 8962

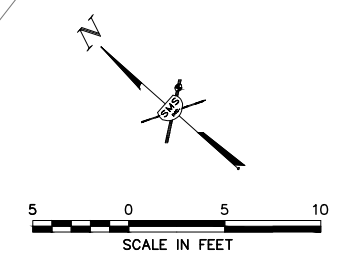
REF. BK.	PG.
JOB NO. 500718	
DSN. BY: ANJ	
DWN. BY: CDP	
CHK. BY: DEG	
DATE: JUNE, 2024	

SCALE: 1" = 5'
 SHEET 14 OF 18



SIDEWALK LEGEND

-  - DETECTABLE WARNING
-  - LANDING - MIN. SIZE 4' X 4' MAX. SLOPE IN EITHER DIRECTION = 2.0%
-  - DEPRESSED CURB
-  - SLOPE CURB WITH SIDEWALK

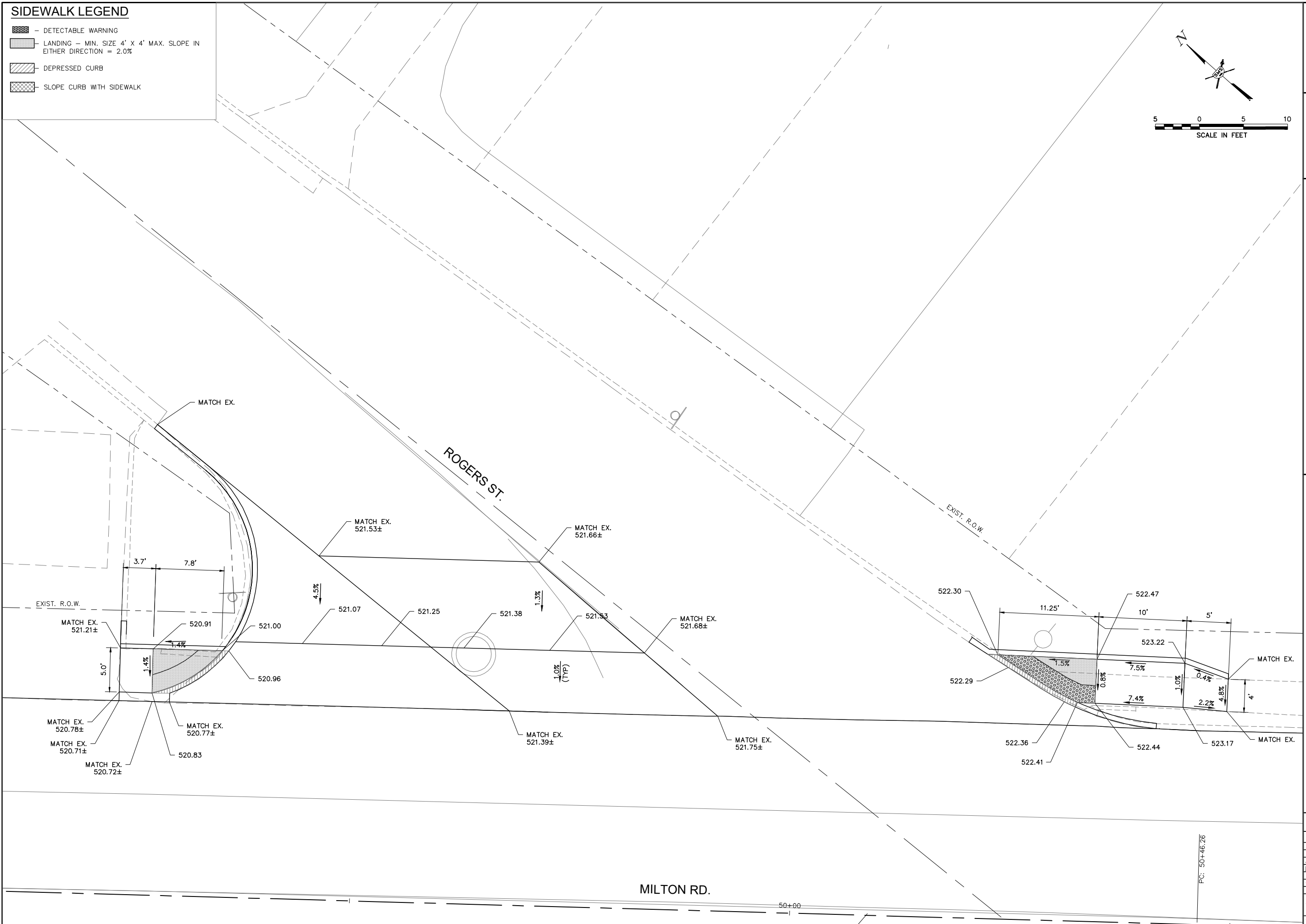


REVISIONS

SMS ENGINEERS
Sheppard, Morgan & Schwab, Inc.
CONSULTING ENGINEERS AND LAND SURVEYORS
215 Market Street, Alton, IL 62002 618-462-9755 Email: mail@smsengineers.com
DESIGN FIRM # 184-000952

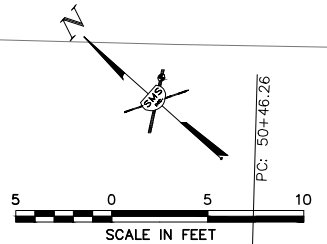
CITY OF ALTON, ILLINOIS
SECTION 21-00242-00-RS
MILTON ROAD
CONSTRUCTION DETAILS

CONTRACT NO.	97845
F.A.U. RTE.	8962
REF. BK.	PG.
JOB NO.	500718
DSN. BY:	ANJ
DWN. BY:	CDP
CHK. BY:	DEG
DATE:	JUNE, 2024
SCALE:	1" = 5'
SHEET	15 OF 18



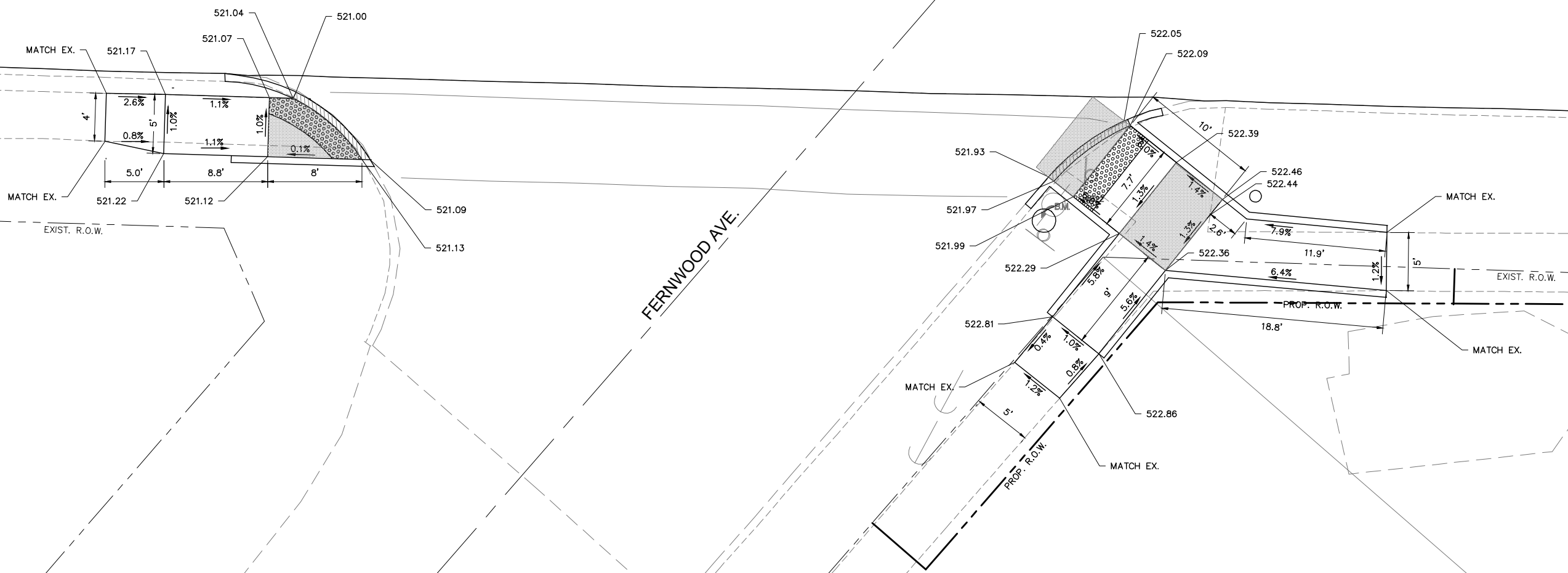
SIDEWALK LEGEND

- DETECTABLE WARNING
- LANDING - MIN. SIZE 4' X 4' MAX. SLOPE IN EITHER DIRECTION = 2.0%
- DEPRESSED CURB
- SLOPE CURB WITH SIDEWALK



MILTON RD.

50+00



NO.	DESCRIPTION

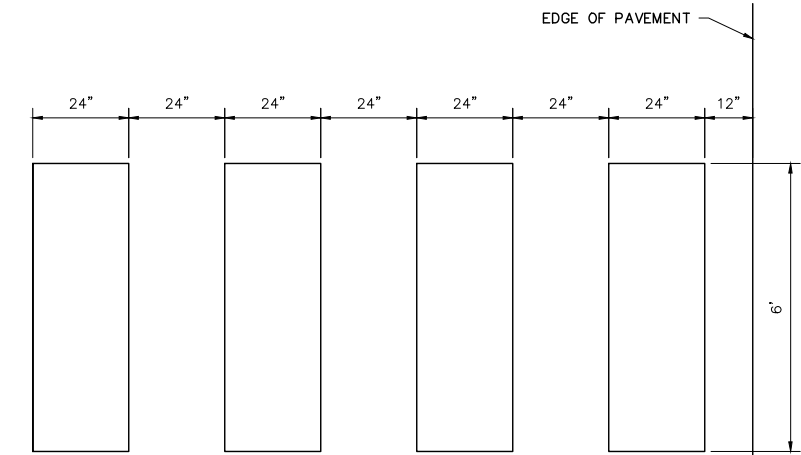
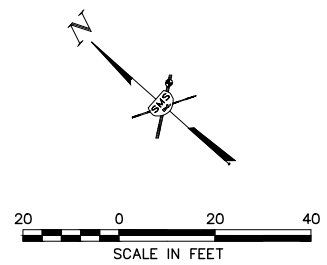
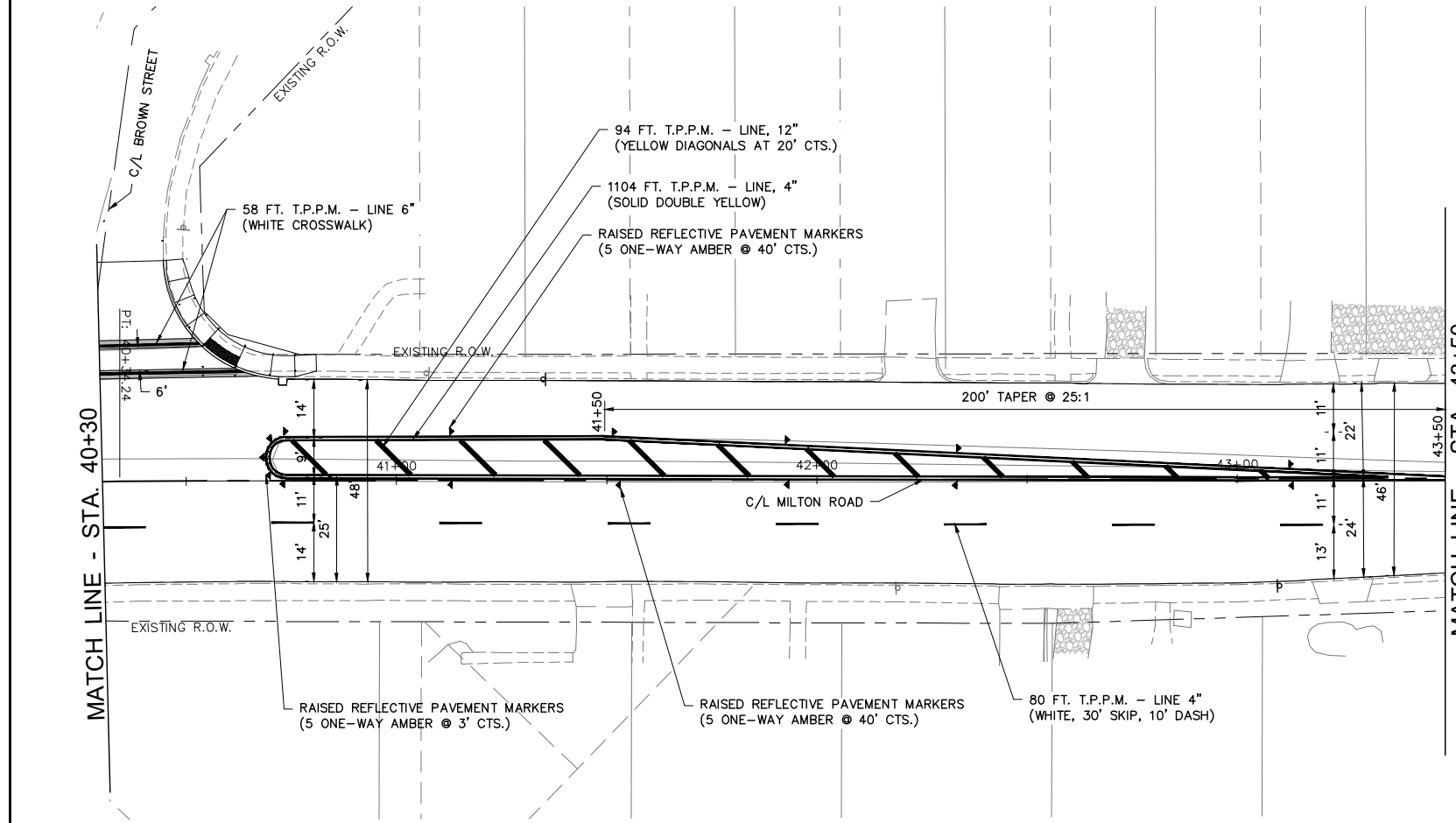
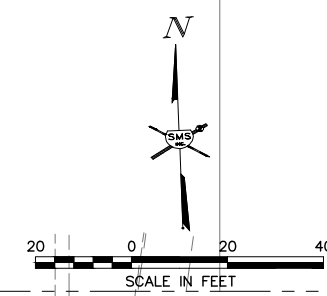
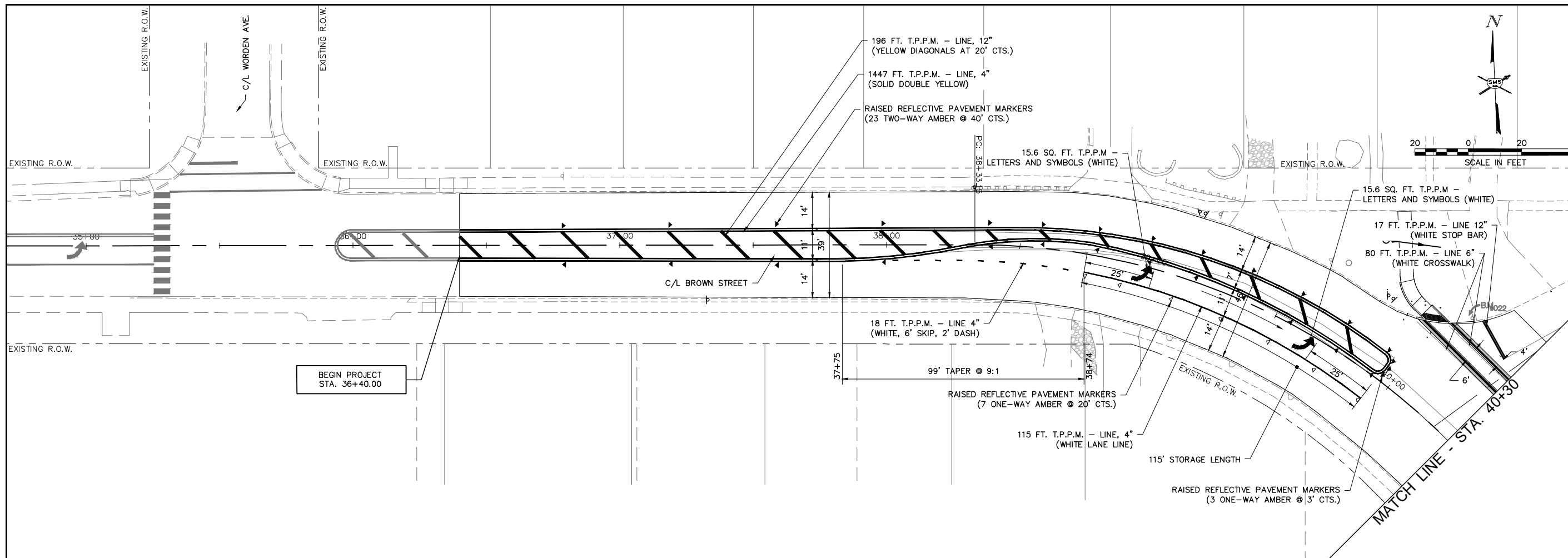
SMS
ENGINEERS

Sheppard, Morgan & Schwab, Inc.
CONSULTING ENGINEERS AND LAND SURVEYORS

215 Market Street, Alton, IL 62002 618-462-9755 Email: mail@smsengineers.com
DESIGN FIRM # 184-000992

CITY OF ALTON, ILLINOIS
SECTION 21-00242-00-RS
MILTON ROAD
CONSTRUCTION DETAILS

CONTRACT NO. 97845	
F.A.U. RTE. 8962	
REF. BK.	PG.
JOB NO. 500718	
DSN. BY: ANJ	
DWN. BY: CDP	
CHK. BY: DEG	
DATE: JUNE, 2024	
SCALE: 1" = 5'	
SHEET 16 OF 18	



TYPICAL CROSSWALK BARS DETAIL
NO SCALE

NO.	REVISIONS

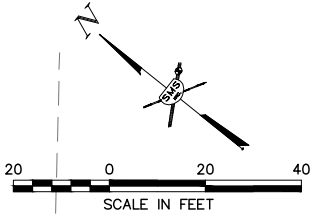
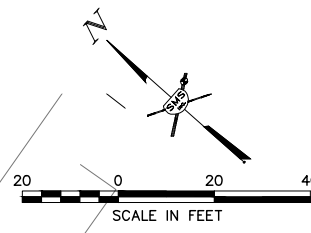
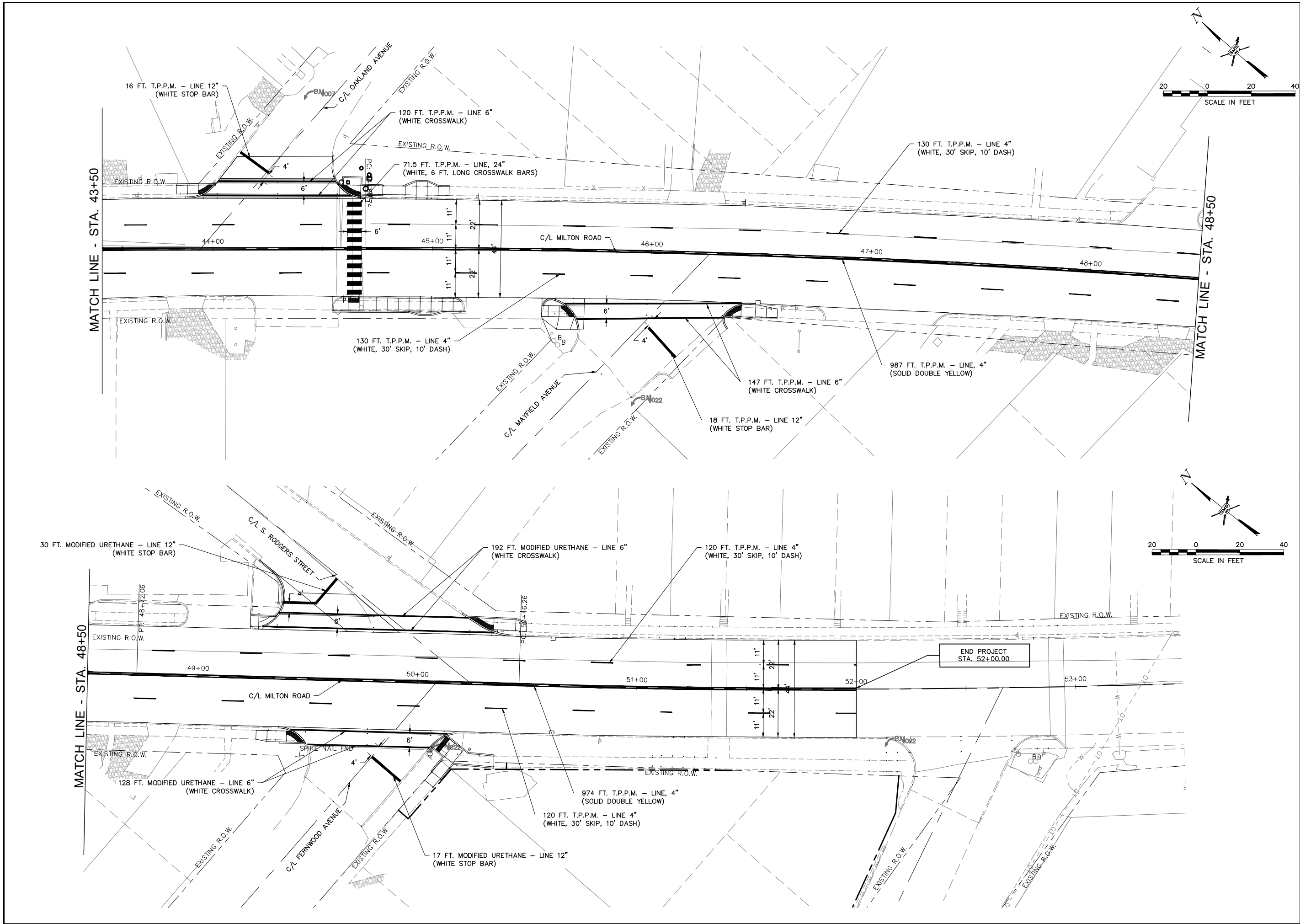
SMS Sheppard, Morgan & Schwab, Inc.
ENGINEERS
CONSULTING ENGINEERS AND LAND SURVEYORS
215 Market Street, Alton, IL 62002 618.462.9755 E-mail: mail@smsengineers.com
DESIGN FIRM # 184-000992

CITY OF ALTON, ILLINOIS
SECTION 21-00242-00-RS
MILTON ROAD
PAVEMENT MARKING

CONTRACT NO. 97845
F.A.U. RTE. 8962

REF. BK.	PG.
JOB NO. 500718	
DSN. BY: ANJ	
DWN. BY: CAD	
CHK. BY: DEG	
DATE: JUNE, 2024	

SCALE: 1" = 20'
SHEET 17 OF 18



NO.	DATE	DESCRIPTION

SMS Sheppard, Morgan & Schwab, Inc.
 ENGINEERS CONSULTING ENGINEERS AND LAND SURVEYORS
 215 Market Street, Alton, IL 62002 618-462-9755 E-mail: mail@smsengineers.com
 DESIGN FIRM # 184-000992

CITY OF ALTON, ILLINOIS
 SECTION 21-00242-00-RS
 MILTON ROAD
 PAVEMENT MARKING

CONTRACT NO. 97845	
F.A.U. RTE. 8962	
REF. BK.	PG.
JOB NO. 500718	
DSN. BY: ANJ	
DWN. BY: CAD	
CHK. BY: DEG	
DATE: JUNE, 2024	
SCALE: 1" = 20'	
SHEET 18	OF 18