

UTILITIES

- THE FOLLOWING UTILITY COMPANIES MAY HAVE FACILITIES LOCATED WITHIN THE LIMITS OF CONSTRUCTION WHICH MAY REQUIRE ADJUSTMENT, RELOCATION OR REMOVAL. REFER TO THE "STATUS OF UTILITIES TO BE ADJUSTED" SPECIAL PROVISION FOR ADDITIONAL INFORMATION.

AT&T (TELEPHONE)
160 W DIVISION ST
MARYVILLE, IL 62062
KEVIN URBANEK
(618) 346-6426

CITY OF EDWARDSVILLE (WATER & SEWER)
118 HILLSBORO AVENUE
EDWARDSVILLE, IL 62025
RYAN ZWIJACK
(618) 692-7535

CHARTER COMMUNICATIONS (COMMUNICATIONS)
815 CHARTER COMMONS
TOWN & COUNTRY, MO 63017
RICK GILREATH
(636) 387-6650

GENERAL


- THE CONTRACTOR SHALL VERIFY ALL DIMENSIONS AND CONDITIONS IN THE FIELD PRIOR TO ORDERING MATERIALS AND COMMENCING CONSTRUCTION.
- THE CONTRACTOR SHALL CONFINE ALL OPERATIONS TO THE CONSTRUCTION LIMITS LINE SHOWN ON THE PLANS. ANY AREA DISTURBED BEYOND THESE LIMITS SHALL BE RESTORED TO ITS ORIGINAL CONDITION AT THE CONTRACTOR'S EXPENSE.
- THE CONTRACTOR SHALL FERTILIZE, SEED AND MULCH ALL EARTH SURFACES DISTURBED BY CONSTRUCTION. FERTILIZER, SEEDING AND MULCH OUTSIDE THESE LIMITS WILL NOT BE MEASURED FOR PAYMENT.

PAVEMENT MARKING

- THE PAVEMENT MARKING LOCATIONS SHOWN IN THE PLANS ARE APPROXIMATE. PROPOSED CROSSWALKS AND STOP BARS SHALL BE ADJUSTED AS DIRECTED BY THE ENGINEER, IF NECESSARY, TO MATCH FIELD CONDITIONS.

APPROXIMATE QUANTITIES, SYMBOLS & ABBREVIATIONS

- THE FOLLOWING SYMBOLS AND ABBREVIATIONS SUPPLEMENT OR SUPERCEDE HIGHWAY STANDARD 000001:

	FLARED END SECTION
AD	ALGEBRAIC DIFFERENCE IN GRADE
BVCE	BEGINNING OF VERTICAL CURVE ELEVATION
BVCS	BEGINNING OF VERTICAL CURVE STATION
BO	BY OTHERS (USED IN CONJUNCTION WITH TBA & TBR)
CONSTR	CONSTRUCTION
CP	CONTROL POINT
ESMT	EASEMENT
ELEV	ELEVATION
EVCE	END OF VERTICAL CURVE ELEVATION
EVCS	END OF VERTICAL CURVE STATION
K	LENGTH OF VERTICAL CURVE PER PERCENT GRADE DIFFERENCE
N/F	NOW OR FORMERLY
O/C	OIL AND CHIP
PERM	PERMANENT
PVI	POINT OF VERTICAL INTERSECTION
PVC	POLYVINYL CHLORIDE PIPE
TCE	TEMPORARY CONSTRUCTION EASEMENT
TUP	TEMPORARY USE PERMIT
TBA	TO BE ADJUSTED
TBRL	TO BE RELOCATED
TYP	TYPICAL
W	WIDTH

HIGHWAY STANDARDS

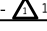
000001-08	STANDARD SYMBOLS, ABBREVIATIONS AND PATTERNS
001001-02	AREAS OF REINFORCEMENT BARS
001006	DECIMAL OF AN INCH AND OF A FOOT
420401-13	PAVEMENT CONNECTOR (PCC) FOR BRIDGE APPROACH SLAB
420701-03	PAVEMENT WELDED WIRE REINFORCEMENT
442101-09	CLASS B PATCHES
515001-04	NAME PLATE FOR BRIDGES
630001-13	STEEL PLATE BEAM GUARDRAIL
630116	BACK SIDE PROTECTION OF GUARDRAIL
631031-18	TRAFFIC BARRIER TERMINAL, TYPE 6
631032-10	TRAFFIC BARRIER TERMINAL, TYPE 6A
701901-09	TRAFFIC CONTROL DEVICES
725001-01	OBJECT AND TERMINAL MARKERS
780001-05	TYPICAL PAVEMENT MARKINGS
781001-04	TYPICAL APPLICATIONS RAISED REFLECTIVE PAVEMENT MARKERS
782006-01	GUARDRAIL AND BARRIER WALL REFLECTOR MOUNTING DETAILS
BLR21-9	TYPICAL APPLICATION OF TRAFFIC CONTROL DEVICES FOR CONSTRUCTION ON RURAL LOCAL HIGHWAYS



MODEL: Default
FILE NAME: I:\222030 - Center Grove Road Bridge\CADD\Microstation\CADD Drawings\222030_sht-general notes.dgn



OATES ASSOCIATES
www.oatesassociates.com
ILLINOIS DESIGN FIRM LICENSE NO.: 184.001115

USER NAME = breanna.frahm	DESIGNED -	REVISED -  10/25/2024
	DRAWN -	REVISED -
PLOT SCALE = 100.0000' / in.	CHECKED -	REVISED -
PLOT DATE = 10/25/2024	DATE -	REVISED -

STATE OF ILLINOIS
DEPARTMENT OF TRANSPORTATION

GENERAL NOTES, COMMITMENTS, &
HIGHWAY STANDARDS

SCALE: NTS SHEET 1 OF 1 SHEETS STA. TO STA.

F.A.U. RTE.	SECTION	COUNTY	TOTAL SHEETS	SHEET NO.
8874	20-00109-01-BR	MADISON	37	2
CONTRACT NO. 97846			ILLINOIS FED. AID PROJECT	

SI	SP	CODE NO.	ITEM	UNIT	TOTAL QUANTITY
		20101000	TEMPORARY FENCE	FOOT	127
		42000080	PAVEMENT CONNECTOR (PCC) FOR BRIDGE APPROACH SLAB	SQ YD	140
		44000100	PAVEMENT REMOVAL	SQ YD	165
		44200050	WELDED WIRE REINFORCEMENT	SQ YD	191
		44201337	CLASS C PATCHES, TYPE I, 9 INCH	SQ YD	19
		44200956	CLASS B PATCHES, TYPE II, 9 INCH	SQ YD	168
		44201341	CLASS C PATCHES, TYPE II, 9 INCH	SQ YD	51
		44200962	CLASS B PATCHES, TYPE III, 9 INCH	SQ YD	23
		44201345	CLASS C PATCHES, TYPE III, 9 INCH	SQ YD	117
		44200964	CLASS B PATCHES, TYPE IV, 9 INCH	SQ YD	168
		44201347	CLASS C PATCHES, TYPE IV, 9 INCH	SQ YD	172
		44201298	DOWEL BARS 1 1/4"	EACH	600
		50101500	REMOVAL OF EXISTING SUPERSTRUCTURES	EACH	1
		44213200	SAW CUTS	FOOT	1,432
		50102400	CONCRETE REMOVAL	CU YD	11.2
		44213204	TIE BARS 3/4"	EACH	42
		50157300	PROTECTIVE SHIELD	SQ YD	207
		50300225	CONCRETE STRUCTURES	CU YD	22.9
		50300255	CONCRETE SUPERSTRUCTURE	CU YD	318.7
		50300260	BRIDGE DECK GROOVING	SQ YD	1,034
		50300300	PROTECTIVE COAT	SQ YD	1,734

SI	SP	CODE NO.	ITEM	UNIT	TOTAL QUANTITY
		50301350	CONCRETE SUPERSTRUCTURE (APPROACH SLAB)	CU YD	59.5
		50400505	PRECAST PRESTRESSED CONCRETE DECK BEAMS (27" DEPTH)	SQ FT	12,691
		50800205	REINFORCEMENT BARS, EPOXY COATED	POUND	71,650
*		50901050	STEEL RAILING, TYPE SM	FOOT	332
*		50901720	BICYCLE RAILING	FOOT	328
*		50901750	PARAPET RAILING	FOOT	328
		51500100	NAME PLATES	EACH	1
*		63000001	STEEL PLATE BEAM GUARDRAIL, TYPE A, 6 FOOT POSTS	FOOT	137.5
*		63000035	BACK SIDE PROTECTION OF GUARDRAIL	FOOT	187.0
*		63100167	TRAFFIC BARRIER TERMINAL, TYPE 1 (SPECIAL) TANGENT	EACH	4
*		63100085	TRAFFIC BARRIER TERMINAL, TYPE 6	EACH	2
		63100087	TRAFFIC BARRIER TERMINAL, TYPE 6A	EACH	2
		63200310	GUARDRAIL REMOVAL	FOOT	806
		67100100	MOBILIZATION	L SUM	1

MODEL Default
 FILE NAME: I:\2222030 - Center Grove Road Bridge\CADD\Microstation\CADD Drawings\222030_sht-500.dgn
 ILLINOIS DESIGN FIRM LICENSE NO: 184.001115



USER NAME = breanna.frahm
 PLOT SCALE = 100.0000' / in.
 PLOT DATE = 9/4/2024

DESIGNED -
 DRAWN -
 CHECKED -
 DATE -

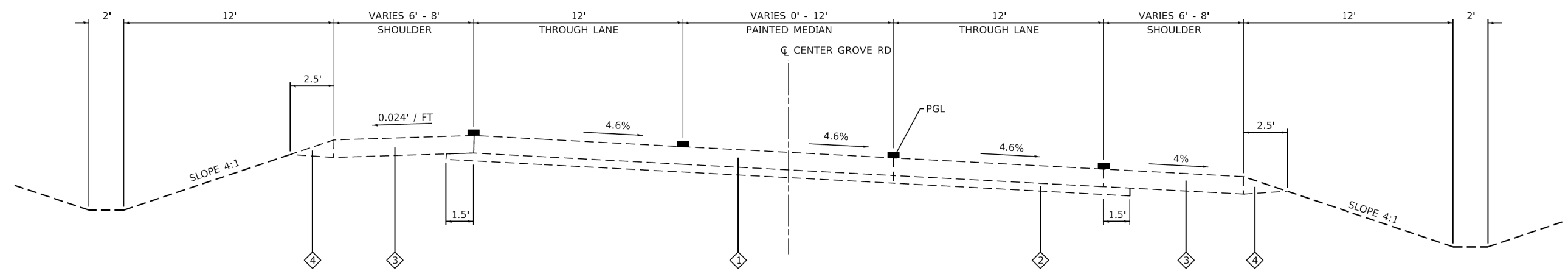
REVISED - 10/25/2024
 REVISED -
 REVISED -
 REVISED -

STATE OF ILLINOIS
DEPARTMENT OF TRANSPORTATION

SUMMARY OF QUANTITIES

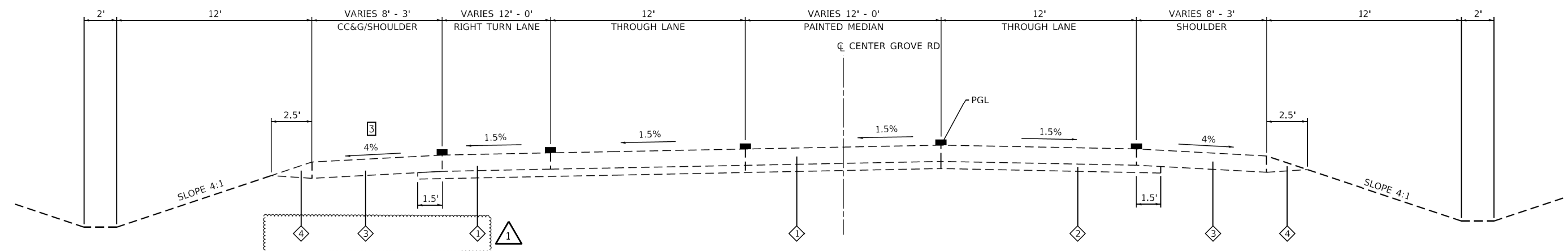
SCALE: NTS SHEET 1 OF 2 SHEETS STA. TO STA.

F.A.U. RTE.	SECTION	COUNTY	TOTAL SHEETS	SHEET NO.
8874	20-00109-01-BR	MADISON	37	3
CONTRACT NO. 97846			ILLINOIS FED. AID PROJECT	



PROPOSED CENTER GROVE ROAD

STA. 21+81 TO STA. 29+90



PROPOSED CENTER GROVE ROAD

STA. 12+09 TO STA. 21+81
BRIDGE OMISSION STA. 17+75 TO STA. 21+01

TYPICAL SECTION LEGEND

- ① PC CONCRETE PAVEMENT (9") W/ PAVEMENT FABRIC, TYPE A
- ② STABILIZED SUB-BASE (4")
- ③ BITUMINOUS SHOULDERS (9")
- ④ AGGREGATE SHOULDERS, TYPE B

- ① TRANSITION FROM 1.5% TO 4.6% FROM STA. 21+80.69 TO STA. 25+00
- ② TRANSITION FROM 4.6% TO 1.5% FROM STA. 27+33.50 TO STA. 30+00
- ③ FROM STA. 12+09 TO STA. 14+70 EDGE CONDITION IS B6.24 CURB & GUTTER

MODEL Default - Center Grove Road Bridge.CADD\Microstation\CADD Drawings\22030 - shh\typical.dgn



USER NAME = breanna.frahm
DESIGNED -
DRAWN -
PLOT SCALE = 10.0000' / in.
CHECKED -
DATE -
PLOT DATE = 10/25/2024

DESIGNED -
DRAWN -
CHECKED -
DATE -

REVISED - 10/25/2024
REVISED -
REVISED -
REVISED -

**STATE OF ILLINOIS
DEPARTMENT OF TRANSPORTATION**

TYPICAL SECTIONS
SCALE: NTS SHEET 2 OF 2 SHEETS STA. TO STA.

F.A.U. RTE.	SECTION	COUNTY	TOTAL SHEETS	SHEET NO.
8874	20-00109-01-BR	MADISON	37	6
ILLINOIS FED. AID PROJECT			CONTRACT NO. 97846	

PAVEMENT

STATION	STATION	OFFSET	PVT CON PCC BR APP SL (SQ YD)	WELDED WIRE REINF (SQ YD)	CL B PATCH T2 9 (SQ YD)	CL B PATCH T3 9 (SQ YD)	CL B PATCH T4 9 (SQ YD)	DOWEL BARS 1 1/4 (EACH)	SAW CUTS (FOOT)	TIE BARS 3/4 (EACH)
14+37	14+43	LT			8			24	48	
14+95	15+01	LT			8			24	48	
14+95	15+01	CL			8			24	48	
14+95	15+01	RT			8			24	48	
15+57	15+63	LT			8			24	48	
15+57	15+63	RT			8			24	48	
15+97	16+18	LT		29			29	24	78	7
15+97	16+18	CL		29			29	24	78	7
15+97	16+18	RT		29			29	24	78	7
16+34	16+51	RT		23		23		24	70	
16+76	16+96	LT		27			27	24	76	7
16+76	16+96	CL		27			27	24	76	7
16+76	16+96	RT		27			27	24	76	7
17+57	17+72	CL	70							
21+04	21+19	CL	70							
21+77	21+85	RT			11			24	52	
22+15	22+23	LT			11			24	52	
22+15	22+23	CL			11			24	52	
22+53	22+59	RT			8			24	48	
22+76	22+82	LT			8			24	48	
22+76	22+82	CL			8			24	48	
22+76	22+82	RT			8			24	48	
23+56	23+62	RT			8			24	48	
23+96	24+05	RT			13			24	56	
24+36	24+42	RT			8			24	48	
24+74	24+84	RT			13			24	56	
25+14	25+24	RT			13			24	56	
TOTAL			140	191	168	23	168	600	1,432	42



REMOVAL

STATION	STATION	OFFSET	PAVEMENT REM (SQ YD)	GUARDRAIL REMOV (FOOT)	PAVMT MRKG REM WTR BL (SQ FT)	RAISD REF PM REFL REM (EACH)	DESCRIPTION
14+26	16+72	CL				7	
14+26	17+86	LT				10	
14+57	17+86	LT			110		SOLID WHITE
14+26	16+71	LT			102		TWTL
14+26	16+72	CL			103		TWTL
14+87	17+86	RT		303			
15+87	17+86	LT		203			
16+71	17+86	LT			77		DBL CL
17+57	17+74	CL	83				
20+90	21+99	LT			73		DBL CL
20+90	22+40	RT		151			
20+90	22+39	LT		149			
20+90	23+84	LT			98		SOLID WHITE
20+90	23+86	LT				8	
21+02	21+20	CL	82				
21+99	23+86	LT			78		TWTL
21+99	23+86	CL				5	
21+99	23+86	CL			78		TWTL
TOTAL			165	806	719	30	

PAVEMENT MARKING

STATION	STATION	OFFSET	MOD URETH PM LTR-SYM SYM (SQ FT)	MOD URETH PM LINE 4 (FOOT)	MOD URETH PM LINE 6 (FOOT)	MOD URETH PM LINE 12 (FOOT)	RAISED REFL PAVT MKR (EACH)	DESCRIPTION
12+09	13+50	LT		296				DOUBLE YELLOW CL
12+09	13+50	LT		276				DOUBLE YELLOW CL
12+12		LT				32		STOP BAR
12+12	23+85	LT		1,177				LT WHITE EDGE
12+12	13+24	LT		111				LT LANE LINE
12+12	25+16	RT		1,302				RT WHITE EDGE
12+33		LT	15.6					RT ARROW
12+33	13+44	LT			102			GORE LINES 20' INTERVAL
13+01		LT	15.6					RT ARROW
13+50	14+12	LT		78				TWTL
13+50	14+12	CL		78				TWTL
13+93		LT	15.6					LT ARROW
14+07		LT	15.6					LT ARROW
14+26	16+72	CL					7	
14+26	17+17	LT			130			GORE LINES 20' INTERVAL
14+12	17+72	LT		720				DOUBLE YELLOW CL
14+26	23+86	LT					24	
14+12	23+86	CL		1,947				DOUBLE YELLOW CL
21+04	23+86	CL		563				DOUBLE YELLOW CL
21+48	23+70	LT			99			GORE LINES 20' INTERVAL
21+99	23+86	CL					5	
23+93		LT	15.6					LT ARROW
24+07		LT	15.6					LT ARROW
24+30	25+17	LT		88				LT WHITE EDGE
TOTAL			93.6	6,636	331	32	36	

GUARDRAIL

STATION	STATION	OFFSET	SPBGR TY A 6FT POSTS (FOOT)	BCK SD PROT OF GRDRL (FOOT)	TR BAR TRM T1 SPL TAN (EACH)	TRAF BAR TERM T6 (EACH)	TRAF BAR TERM T6A (EACH)	TERMINAL MARKER - DA (EACH)	GRDRAIL REF TYPE A (EACH)	BARR WALL REF TYPE C (EACH)	STEEL POSTS MODIFIED (EACH)
16+35		RT			1			1			
16+35	21+80	RT							7		
16+97		LT			1			1			
16+97	17+72	LT									22
16+97	17+72	LT	62.5						1		
17+10	17+72	LT		63							
17+72		LT				1					
17+72		RT					1				
17+72	21+05	LT								4	
21+05		LT				1					
21+05		RT					1				
21+05	22+29	LT		125							
21+05	22+42	LT	75.0						2		
21+05	22+42	LT									32
21+80		RT			1			1			
22+42		LT			1			1			
TOTAL			137.5	187.0	4	2	2	4	10	4	54

CONSTRUCTION LAYOUT

1	L SUM
---	-------

DETOUR SIGNING

1	L SUM
---	-------

MOBILIZATION

1	L SUM
---	-------

MODEL Default
FILE NAME: I:\2222030 - Center Grove Road Bridge\CADD\Microstation\CADD Drawings\222030_sht-schedules.dgn



USER NAME = breanna.frahm
DESIGNED -
DRAWN -
CHECKED -
DATE -
PLOT SCALE = 100.0000' / in.
PLOT DATE = 10/25/2024

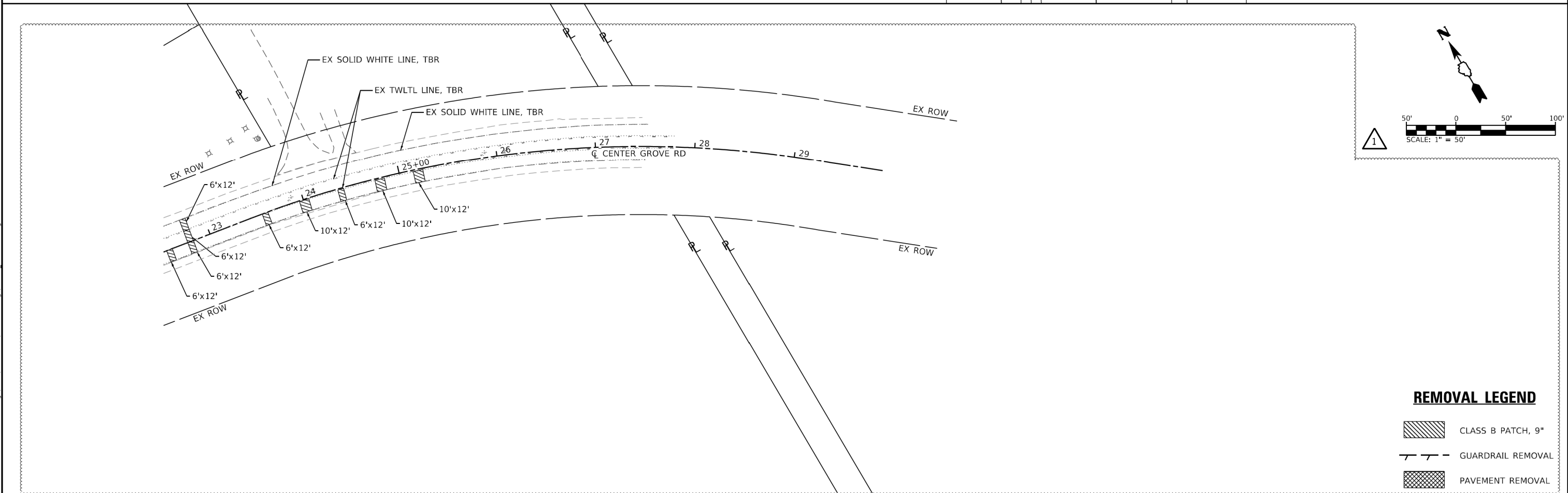
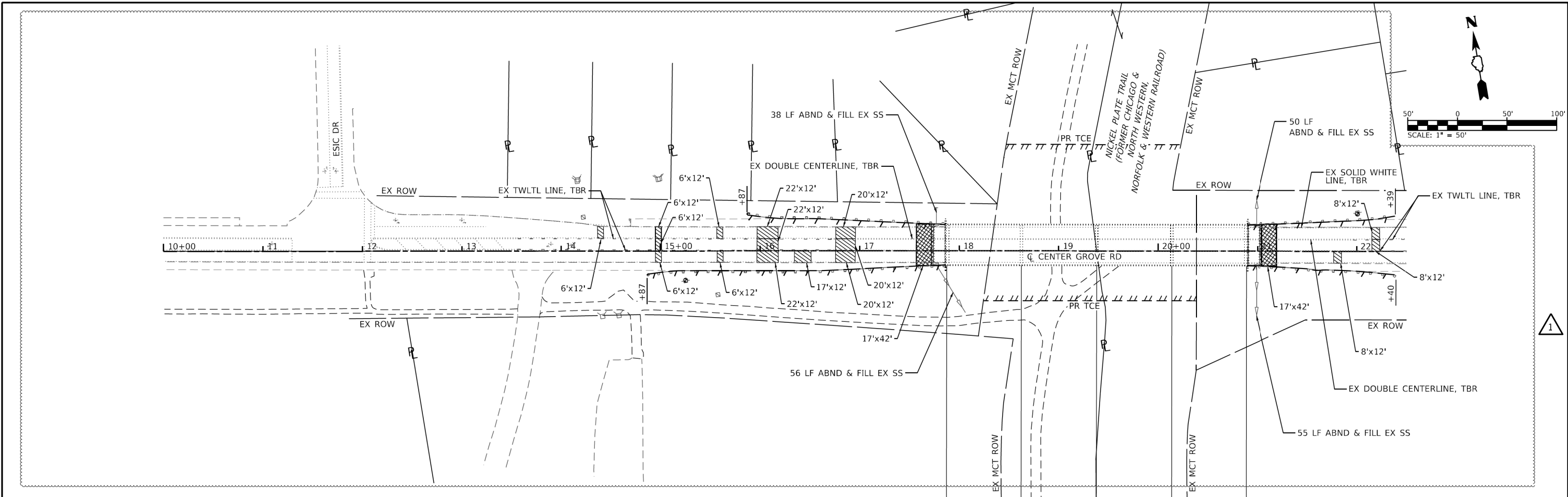
DESIGNED -
DRAWN -
CHECKED -
DATE -
REVISED - 10/25/2024
REVISED -
REVISED -
REVISED -

**STATE OF ILLINOIS
DEPARTMENT OF TRANSPORTATION**


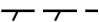

SCHEDULES

SCALE: NTS SHEET 1 OF 1 SHEETS STA. TO STA.

F.A.U. RTE.	SECTION	COUNTY	TOTAL SHEETS	SHEET NO.
8874	20-00109-01-BR	MADISON	37	7
ILLINOIS FED. AID PROJECT			CONTRACT NO. 97846	

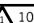


REMOVAL LEGEND

-  CLASS B PATCH, 9"
-  GUARDRAIL REMOVAL
-  PAVEMENT REMOVAL

MODEL Default
FILE NAME: I:\222030 - Center Grove Road Bridge\CADD\Microstation\CADD Drawings\222030_sbrremoval.dgn



USER NAME = breanna.frahm	DESIGNED -	REVISED -  10/25/2024
PLOT SCALE = 100.0000' / in.	DRAWN -	REVISED -
PLOT DATE = 10/25/2024	CHECKED -	REVISED -
	DATE -	REVISED -

**STATE OF ILLINOIS
DEPARTMENT OF TRANSPORTATION**

REMOVAL SHEET

SCALE: 1"=50' SHEET 1 OF 1 SHEETS STA. TO STA.

F.A.U. RTE.	SECTION	COUNTY	TOTAL SHEETS	SHEET NO.
8874	20-00109-01-BR	MADISON	37	13
CONTRACT NO. 97846			ILLINOIS FED. AID PROJECT	

GENERAL NOTES

Keyway surfaces shall be cleaned to remove form oil or other bond breaking material prior to shipment of beams. Cleaning shall be done by sandblasting the keyway areas between the top of the beam and the bottom edge of the key.

Reinforcement bars designated (E) shall be epoxy coated.

Do not scale these drawings.

The top surface of the beams shall be finished according to the IDOT Manual for Fabrication of Precast Prestressed Concrete Products for deck beams using the steel comb method.

Plan dimensions and details relative to existing structure have been taken from the existing plans and are subject to nominal construction variations. The Contractor shall field verify existing dimensions and details affecting new construction and make necessary approved adjustments prior to construction or ordering of materials. Such variations shall not be cause for additional compensation for a change in scope of the work, however, the Contractor will be paid for the quantity actually furnished at the unit price bid for the work.

Excavation and backfill required behind abutments shall be included in the cost of Removal of Existing Superstructures. Excavated material may be used as backfill and shall be compacted to the satisfaction of the Resident Engineer. Any excess material shall be disposed of by the Contractor.

All posts, rail, splices, anchor devices, and plates of the Bicycle Railing and Parapet Railing shall be galvanized and shop painted with field touch up. The color of the final finish coat of paint shall be black. Color samples shall be provided to the Resident Engineer for approval. Chain link fabric, ties, and tensioning components shall be vinyl coated according to IDOT Standard Specifications Article 1006.27(a)(1)d. See Special Provisions for "Hot Dip Galvanizing for Structural Steel".



TOTAL BILL OF MATERIAL

ITEM	UNIT	SUPER	SUB	TOTAL
Removal of Existing Superstructures	Each	-	-	1
Concrete Removal	Cu. Yd.	-	11.2	11.2
Protective Shield	Sq. Yd.	207	-	207
Concrete Structures	Cu. Yd.	-	22.9	22.9
Concrete Superstructure	Cu. Yd.	318.7	-	318.7
Bridge Deck Grooving	Sq. Yd.	1,034	-	1,034
Protective Coat	Sq. Yd.	1,734	-	1,734
Concrete Superstructure (Approach Slab)	Cu. Yd.	59.5	-	59.5
Precast Prestressed Concrete Deck Beams (27" Depth)	Sq. Ft.	12,691	-	12,691
Reinforcement Bars, Epoxy Coated	Pound	67,820	3,830	71,650
Steel Railing, Type SM	Foot	332	-	332
Bicycle Railing	Foot	328	-	328
Parapet Railing	Foot	328	-	328
Name Plates	Each	1	-	1
Approach Slab Removal	Sq. Yd.	113	-	113
Cleaning Bridge Seats	Sq. Ft.	-	546	546
Structural Repair of Concrete (Depth Equal to or Less Than 5 Inches)	Sq. Ft.	-	337	337
Acrylic Coating	Sq. Yd.	2.6	-	2.6
Steel Plate	L. Sum	1	-	1

INDEX OF SHEETS

Sheet No.	Description
1	General Plan & Elevation
2	General Data
3	Superstructure
4	Superstructure Details
5	Steel Railing, Type SM
6-7	Bicycle Railing
8	Span 2 Runoff Guard
9-10	Bridge Approach Slab Details
11	27" x 36" PPC Deck Beam
12	27" x 36" PPC Deck Beam Details
13	Concrete Removal
14	Abutments
15-16	Concrete Repair
17-24	Existing Plans

FILE NAME: H:\P222030 - Center Grove Road Bridge\Bridg\Final Plans\Microstation\0606702-002-General Data.dgn



USER NAME =	DESIGNED - KBC	REVISED - 10/17/2024
CHECKED - DGL	REVISIONS	
PLOT SCALE =	DRAWN - KBC	REVISED -
PLOT DATE = 10/17/2024	CHECKED - DGL	REVISED -

**STATE OF ILLINOIS
DEPARTMENT OF TRANSPORTATION**

**GENERAL DATA
STRUCTURE NO. 060-6702**

SHEET 2 OF 24 SHEETS

F.A.U. RTE.	SECTION	COUNTY	TOTAL SHEETS	SHEET NO.
8874	20-00109-01-BR	MADISON	37	15
ILLINOIS			FED. AID PROJECT	
			CONTRACT NO. 97846	