

INDEX OF SHEETS

1. COVER SHEET
2. NOTES AND SUMMARY OF QUANTITIES
3. SCHEDULE OF QUANTITIES
4. TYPICAL CROSS SECTIONS
5. RESURFACING PLAN STA. 10+00 TO 21+50
6. RESURFACING PLAN STA. 21+50 TO 31+00

11-08-2024 LETTING ITEM 140

STATE OF ILLINOIS
DEPARTMENT OF TRANSPORTATION
**PLANS FOR PROPOSED
STU FUNDS**

**FAU 5975 ASHTON ROAD RESURFACING
US ROUTE 6 TO I-80 OVERPASS
CITY OF MORRIS
SECTION 24-00093-00-RS
PROJECT XRBK(869)
GRUNDY COUNTY
C-93-039-25**

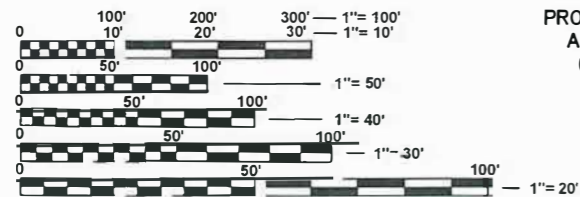


STANDARDS

- 000001-08 STANDARD SYMBOLS, ABBREVIATIONS AND PATTERNS
- 424001-11 PERPENDICULAR CURB RAMPS FOR SIDEWALKS
- 606001-08 CONCRETE CURB TYPE B AND COMBINATION CONCRETE CURB AND GUTTER
- 701301-04 LAND CLOSURE, 2L, 2W, SHORT TERM OPERATIONS
- 701306-04 LANE CLOSURE, 2L, 2W, SLOW MOVING OPERATIONS DAY ONLY, 45MPH OR MORE
- 701501-06 URBAN LANE CLOSURE, 2L, 2W, UNDIVIDED
- 701801-06 SIDEWALK, CORNER OR CROSSWALK CLOSURE
- 701901-09 TRAFFIC CONTROL DEVICES
- 780001-05 TYPICAL PAVEMENT MARKINGS

FUNCTIONAL CLASSIFICATION

MINOR ARTERIAL
DESIGN SPEED: 30 MPH
DESIGN TRAFFIC: 1350 (2023)

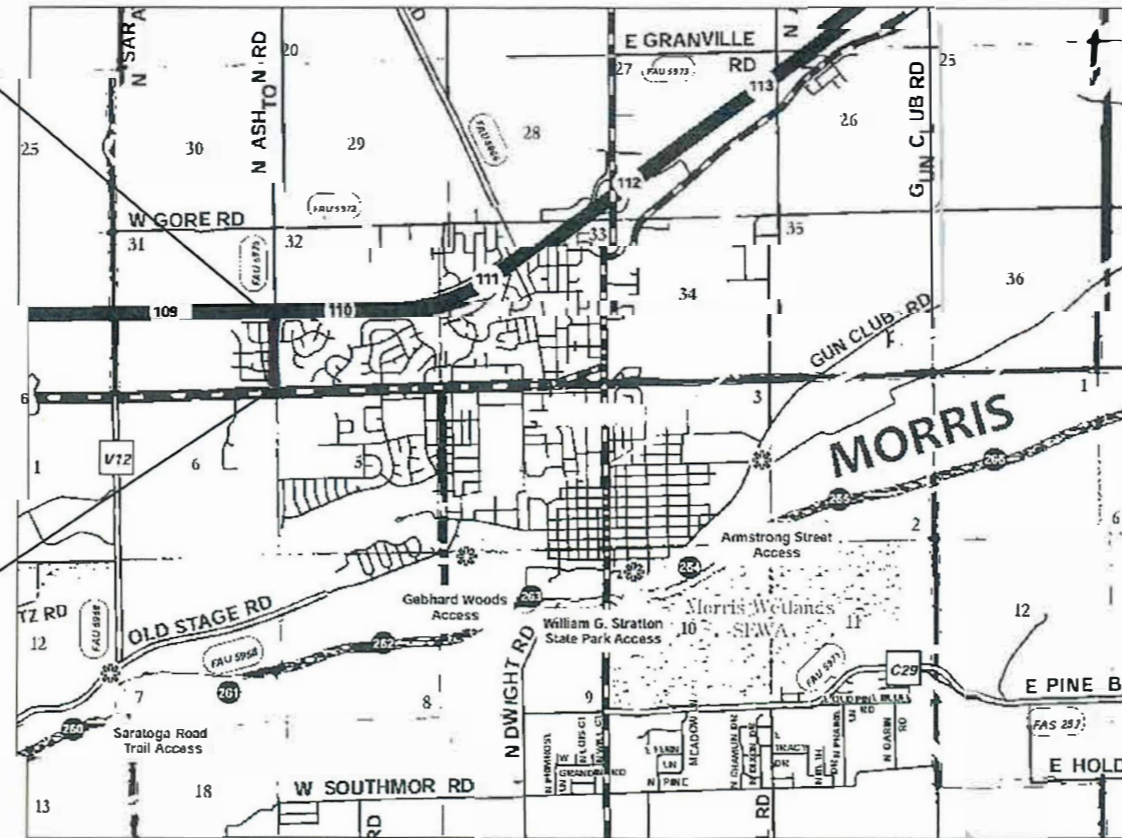


FULL SIZE PLANS HAVE BEEN PREPARED USING STANDARD ENGINEERING SCALES. REDUCED SIZED PLANS WILL NOT CONFORM TO STANDARD SCALES. IN MAKING MEASUREMENTS ON REDUCED PLANS, THE ABOVE SCALES MAY BE USED.

J.U.L.I.E.
JOINT UTILITY LOCATION INFORMATION FOR EXCAVATION
1-800-892-0123
OR 811

PROJECT ENDS
ASHTON ROAD
(STA. 30+06.24)

PROJECT BEGINS
ASHTON ROAD
(STA. 10+50)



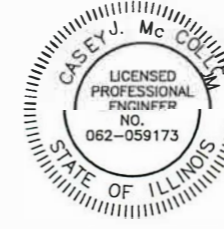
LOCATION SKETCH

NOT TO SCALE

GROSS LENGTH = 1,956.24 FEET = 0.371 MILES
NET LENGTH = 1,956.24 FEET = 0.371 MILES



09/05/24
date



expires 11-30-2025

signature
PROFESSIONAL DESIGN FIRM
LICENSE NO. 184-001717

STATE OF ILLINOIS
DEPARTMENT OF TRANSPORTATION
DIVISION OF HIGHWAYS

APPROVED SEPTEMBER 5 20 24
Chris Bon
LOCAL AGENCY OFFICIAL

PASSED SEPTEMBER 6 20 24
Mike Thompson
DISTRICT THREE ENGINEER OF LOCAL ROADS & STREETS

RELEASING FOR BID BASED ON LIMITED REVIEW SEPTEMBER 6 20 24
Mike Thompson
REGION TWO ENGINEER

PRINTED BY THE AUTHORITY
OF THE STATE OF ILLINOIS

PROJECT (STP) CA01-001-COVER.dwg Date Modified: 08/26/2024 11:45:17 AM Plotted On: Wednesday, September 4, 2024 3:27:41 PM by [Name]

CONTRACT NO. 87872



PERU MORRIS
OTTAWA MENDOTA
ILLINOIS

DRAWN BY: MGH	REVISIONS			
	LEVEL	BY	DATE	DESCRIPTION
CHECKED BY: REH				
DATE: 06/2024				

CURRENT AS OF: 09/04/2024	
SCALE: AS NOTED	SHEET 1
FILE NO.: 66480.00Y-	OF 6

General Notes

- The thickness of HMA shown on the plans is the nominal thickness. Deviations from the nominal thickness will be permitted when such deviations occur due to irregularities in the existing surface or base on which the HMA is placed.
- Except as noted on plans, pavement grades shown are at the top of pavement surfaces.
- The Engineer will be the sole judge concerning curing time for the various HMA lifts.
- For stabilization, all Type III barricades will require a minimum of eight (8) sandbags per barricade.
- All elevations referring to U.S.G.S. Mean Sea Level Datum.
- Any reference to a Standard in these Plans shall be interpreted to mean the Edition as indicated by the subnumber shown in the list of Standards or the copy included in these Plans.
- The following rates of application have been used in calculating plan quantities:

Granular Materials	2.05	tons/cu yd
HMA Surfacing	112	lbs/sq yd/in
Tack Coat – Milled Surface	0.05	lb/sq ft
Tack Coat – New HMA	0.025	lb/sq ft

HMA MIXTURE REQUIREMENT TABLE

Locations:	Entire Project	Entire Project
Mixture Use(s):	HMA Binder Course	HMA Surface Course
Binder Grade (PG):	PG 64-22	PG 64-22
Design Air Voids:	4.0% @ N50	4.0% @ N50
Mixture Composition: (Mixture Gradation)	IL-19.0	IL-9.5
Friction Aggregate:		Mixture C
Mixture Weight:	112.0 LB/SY/IN	112.0 LB/SY/IN
Quality Management Program:	QC/QA	QC/QA
Sublot Size:	N/A	N/A
Density Test Method:	Nuclear	Nuclear
Material Transfer Device (Required):	No	No

SUMMARY OF QUANTITIES

CODE NO.	ITEM	UNIT	TOTAL QUANTITY	CONSTR. CODE
				ROADWAY
				0005 URBAN
40600290	BITUMINOUS MATERIALS (TACK COAT)	POUND	5682	5682
40603080	HOT-MIX ASPHALT BINDER COURSE, IL-19.0, N50	TON	1213	1213
40604050	HOT-MIX ASPHALT SURFACE COURSE, IL 9.5, MIX C, N50	TON	728	728
42400200	PORTLAND CEMENT CONCRETE SIDEWALK 5 INCH	SQ FT	452	452
42400800	DETECTABLE WARNINGS	SQ FT	80	80
44000164	HOT-MIX ASPHALT SURFACE REMOVAL, 3 3/4"	SQ YD	8417	8417
44000500	COMBINATION CURB AND GUTTER REMOVAL	FOOT	75	75
44000600	SIDEWALK REMOVAL	SQ FT	380	380
48102100	AGGREGATE WEDGE SHOULDER, TYPE B	TON	10	10
60603800	COMBINATION CONCRETE CURB AND GUTTER, TYPE B-6.12	FOOT	75	75
67100100	MOBILIZATION	L SUM	1	1
~78000100	THERMOPLASTIC PAVEMENT MARKING - LETTERS AND SYMBOLS	SQ FT	218.4	218.4
~78000200	THERMOPLASTIC PAVEMENT MARKING - LINE 4"	FOOT	5584	5584
~78000500	THERMOPLASTIC PAVEMENT MARKING - LINE 8"	FOOT	393	393
~78000600	THERMOPLASTIC PAVEMENT MARKING - LINE 12"	FOOT	150	150
~78000650	THERMOPLASTIC PAVEMENT MARKING - LINE 24"	FOOT	66	66

~ Denotes Specialty Item

CONTRACT NO. 87872

CHAMLIN & ASSOCIATES, INC. © 2023
Drawing Name: H:\ADREN\66480-00 MORRIS ASHTON ROAD SURFACE TRANSPORTATION PROJECT (SIP)\CAD\02-500.dwg
Last Modified: Friday, September 6, 2024 4:00:46 PM
Plotted On: Monday, September 9, 2024 9:55:23 AM
by: Coll Rogers

DRAWN BY: MGH	REVISIONS			
CHECKED BY: REH	LEVEL	BY	DATE	DESCRIPTION
DATE: 06/2024				



PERU MORRIS
OTTAWA MENDOTA
ILLINOIS

CITY OF MORRIS
700 N. DIVISION STREET
MORRIS, ILLINOIS

NOTES AND SUMMARY OF QUANTITIES

BIDDING PLANS

CURRENT AS OF: 09/04/2024	
SCALE: AS NOTED	SHEET 2
FILE NO.: 66480.00 Y-	OF 6

CHAMLIN & ASSOCIATES, INC. © 2023
 Drawing Name: H:\ADMIN\66480-00 MORRIS ASHTON ROAD SURFACE TRANSPORTATION PROJECT (STP)\CAD\03-QUAN.dwg Last Modified: Friday, September 6, 2024 4:02:20 PM Plotted On: Monday, September 9, 2024 9:56:13 AM by Coll Rogers

THERMOPLASTIC PAVEMENT MARKING-LINE 4"					
ASHTON ROAD					
LOCATION				COLOR	LENGTH LF
BEGIN		END			
STA	OFFSET	STA	OFFSET		
10+55.96	6.56 RT	13+86.04	5.58 LT	Yellow	662
14+69.35	7.36 RT	23+56.44	7.36 RT	Yellow	1118
14+69.35	7.36 LT	23+56.44	7.36 LT	Yellow	1118
23+56.44		26+03.96		Yellow	762
26+83.17		30+31.24		Yellow	1404
27+46.06	18.79 LT	30+06.37	6.09 LT	White	260
27+47.16	18.97 RT	30+06.11	12.09 RT	White	260
TOTAL					5584

THERMOPLASTIC PAVEMENT MARKING-LINE 8"					
ASHTON ROAD					
LOCATION				COLOR	LENGTH LF
BEGIN		END			
STA	OFFSET	STA	OFFSET		
10+55.96	7.77 LT	12+96.04	7.77 LT	White	124
11+46.04	7.77 RT	13+85.96	7.77 RT	White	124
23+56.44	7.77 RT	26+03.94	7.77 RT	White	145
TOTAL					393

THERMOPLASTIC PAVEMENT MARKING-LINE 12"					
ASHTON ROAD					
LOCATION				COLOR	LENGTH LF
BEGIN		END			
STA	OFFSET	STA	OFFSET		
23+56.44		24+88.93		Yellow	40
26+83.17		30+31.24		Yellow	110
TOTAL					150

THERMOPLASTIC PAVEMENT MARKING-LINE 24"					
ASHTON ROAD					
LOCATION				COLOR	LENGTH LF
BEGIN		END			
STA	OFFSET	STA	OFFSET		
10+56.96	6.65 RT	10+56.96	19.37 LT	White	26
26+22.36	39.10 LT	26+42.36	37.10 LT	White	20
26+40.62	49.62 RT	26+60.62	49.62 RT	White	20
TOTAL					66

THERMOPLASTIC PAVEMENT MARKING-LETTERS AND SYMBOLS			
ASHTON ROAD			
LOCATION			AREA SF
STA	OFFSET	COLOR	
10+97.39	1.3 LT	White	15.6
13+42.50	1.3 LT	White	15.6
14+82.35	1.3 LT	White	31.2
16+82.35	1.3 LT	White	31.2
18+82.35	1.3 LT	White	31.2
20+82.35	1.3 LT	White	31.2
22+82.35	1.3 LT	White	31.2
25+10.81	1.3 LT	White	15.6
25+77.81	1.3 LT	White	15.6
TOTAL			218.4

CONTRACT NO. 87872

DRAWN BY: MGH	REVISIONS		
	LEVEL	BY	DATE
CHECKED BY: REH			
DATE: 06/2024			



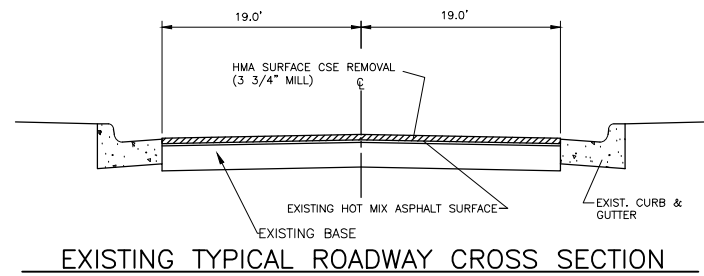
PERU MORRIS
 OTTAWA MENDOTA
 ILLINOIS

CITY OF MORRIS
700 N. DIVISION STREET
MORRIS, ILLINOIS

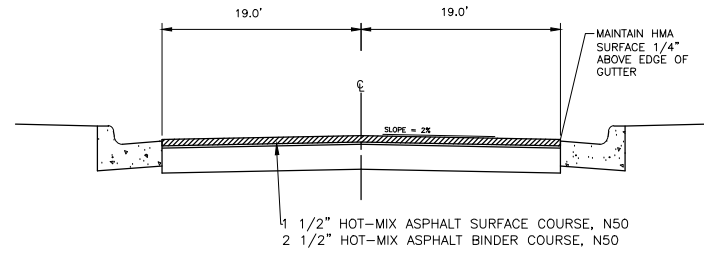
SCHEDULE OF QUANTITIES

BIDDING PLANS	CURRENT AS OF: 09/04/2024	
	SCALE: AS NOTED	SHEET 3
	FILE NO.: 66480.00 Y-	OF 6

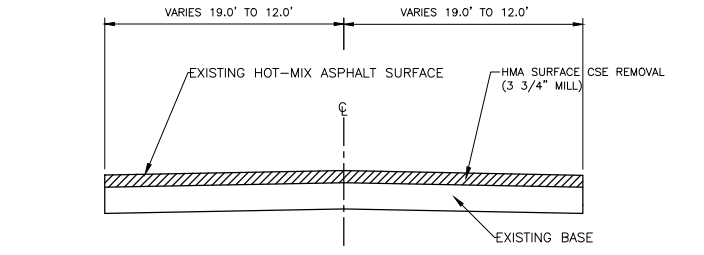
CHAMLIN & ASSOCIATES, INC. © 2023
 Drawing Name: H:\ADREN\66480-00 MORRIS ASHTON ROAD SURFACE TRANSPORTATION PROJECT (STP)\CAD\04-DETAILS.dwg
 Last Modified: Friday, September 6, 2024 4:27:18 PM
 Plotted On: Monday, September 9, 2024 9:29:41 AM
 by: Coll Rogers



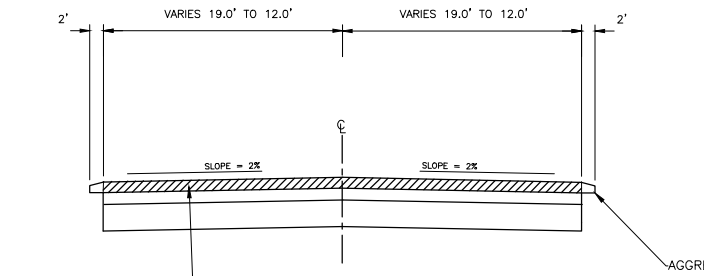
STA. 10+50 TO STA. 27+47



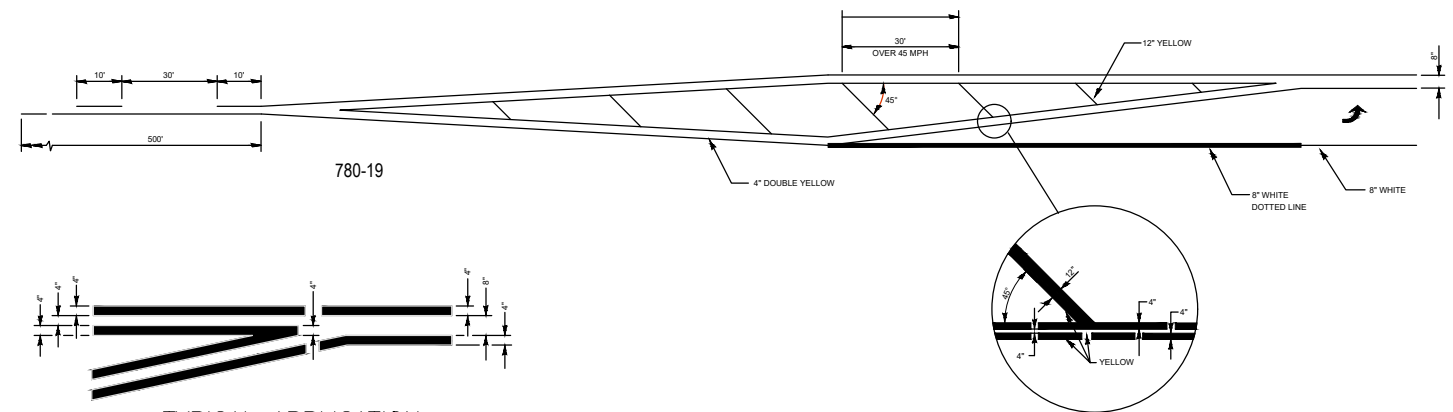
STA. 10+50 TO STA. 27+47



STA. 27+47 TO STA. 30+06

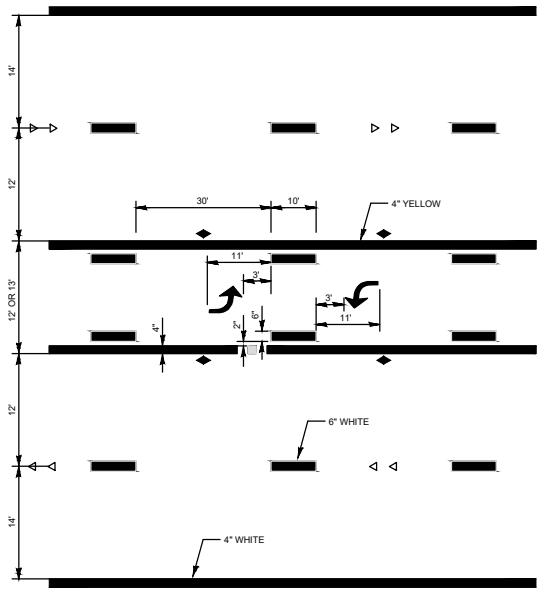


STA. 27+47 TO STA. 30+06

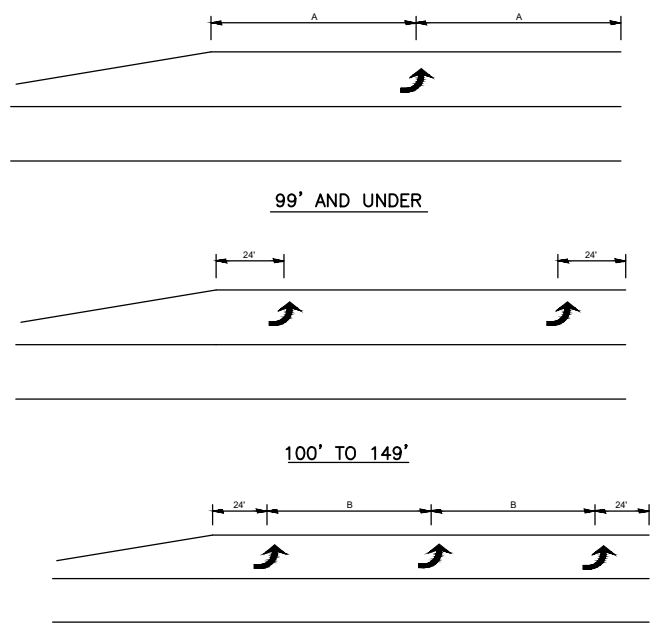


TYPICAL APPLICATION @ LEFT TURN LANES 780-1

ADVANCE AND INTERSECTION LANE DIVIDER LINES



TYPICAL APPLICATION @ BI-DIRECTIONAL LEFT TURN LANE 780-2



TYPICAL PLACEMENT OF ARROWS IN TURN LANES 780-10

CONTRACT NO. 87872

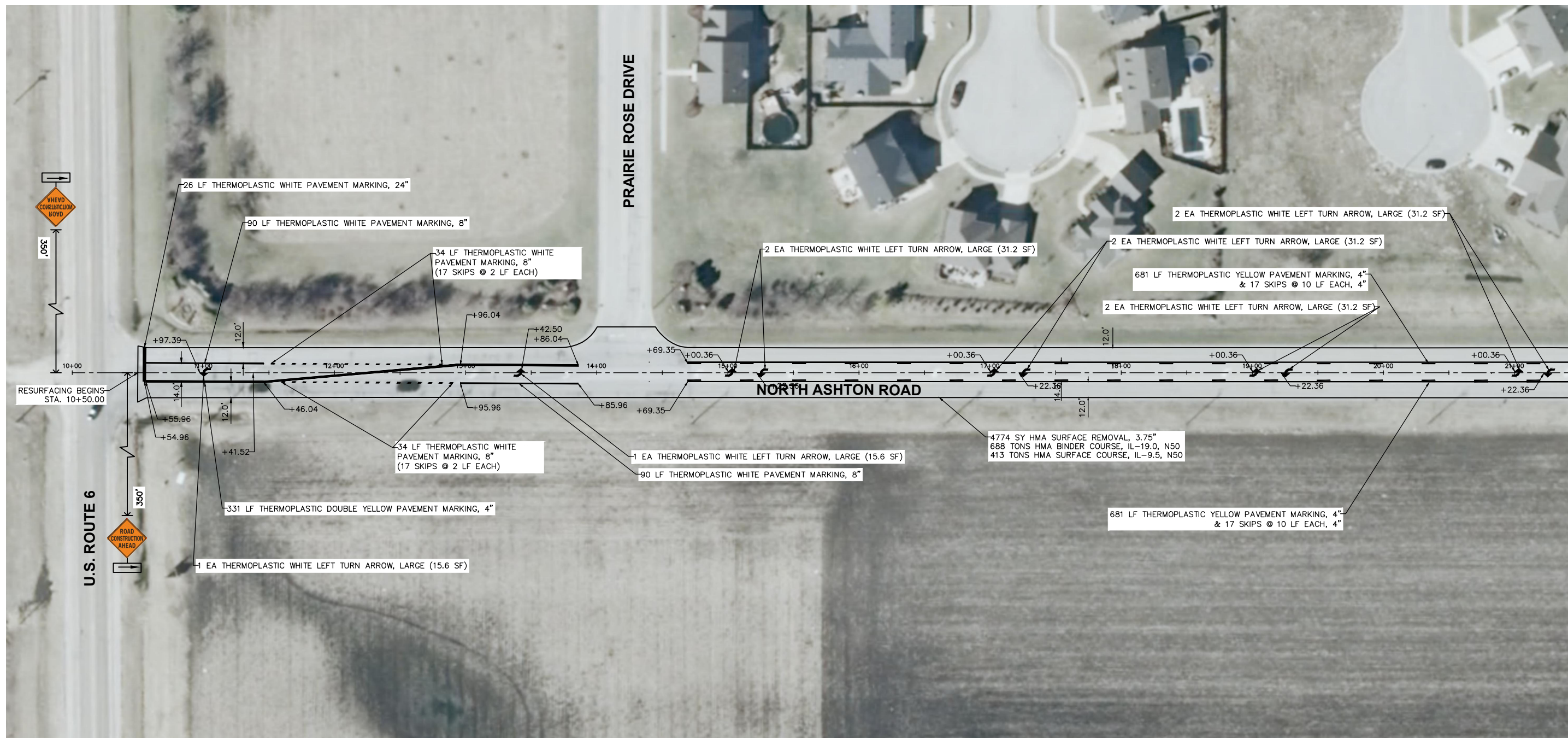
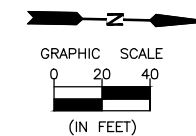
DRAWN BY: MGH	REVISIONS			
CHECKED BY: REH	LEVEL	BY	DATE	DESCRIPTION
DATE: 6/28/2024				


 PERU MORRIS
 OTTAWA MENDOTA
 ILLINOIS

CITY OF MORRIS
 700 N. DIVISION STREET
 MORRIS, ILLINOIS

TYPICAL SECTIONS

CURRENT AS OF: 09/04/2024	
SCALE: AS NOTED	SHEET 4
FILE NO.: 66480.00	OF 6



CHAMLIN & ASSOCIATES, INC. © 2022
 Drawing Name: H:\2024\ASHTON ROAD SURFACE TRANSPORTATION PROJECT (STP)\CAD\05-PL-1.dwg
 Last Modified: Friday, September 6, 2024 4:20:26 PM
 Plotted On: Monday, September 9, 2024 9:43:54 AM
 by: Col Rogers

MATCH LINE STA. 21+50

CONTRACT NO. 87872

DRAWN BY: MGH	REVISIONS			
CHECKED BY: REH	LEVEL	BY	DATE	DESCRIPTION
DATE: 06/24				



PERU MORRIS
 OTTAWA MENDOTA
 ILLINOIS

CITY OF MORRIS
 700 N. DIVISION STREET
 MORRIS, ILLINOIS

ASHTON ROAD LAFO
RESURFACING PLAN
 STA. 10+00 TO STA. 21+50

CURRENT AS OF: 09/04/2024	
SCALE: AS NOTED	SHEET 5
FILE NO.: 66480.00 Y-	OF 6

