

| PROPOSED ROADWAY IMPROVEMENTS - SUMMARY OF QUANTITIES |   |       |                | CONSTRUCTION CODE            |                                   |                           |
|---|---|-------|----------------|------------------------------|-----------------------------------|---------------------------|
| CODE #  | DESCRIPTION   | UNITS | TOTAL QUANTITY | 0004 - RDWY WORK STR 80%/20% | 0028 - MULTI-USE PATH TAP 80%/20% | 0043 - WM WORK 100% LOCAL |
| 20100210  | TREE REMOVAL (OVER 15 UNITS DIAMETER)               | UNIT  | 36             | 36                           |                                   |                           |
| 20200100  | EARTH EXCAVATION                                    | CU YD | 10822          | 10822                        |                                   |                           |
| 20800150  | TRENCH BACKFILL                                     | CU YD | 3237           | 3237                         |                                   |                           |
| 21001000  | GEOTECHNICAL FABRIC FOR GROUND STABILIZATION        | SQ YD | 22242          | 22242                        |                                   |                           |
| 21101615  | TOPSOIL FURNISH AND PLACE, 4"                       | SQ YD | 8634           | 8634                         |                                   |                           |
| 25000100  | SEEDING, CLASS 1                                    | ACRE  | 1.25           | 1.25                         |                                   |                           |
| 25000110  | SEEDING, CLASS 1A                                   | ACRE  | 0.75           | 0.75                         |                                   |                           |
| 25000400  | NITROGEN FERTILIZER NUTRIENT                        | POUND | 161            | 161                          |                                   |                           |
| 25000500  | PHOSPHORUS FERTILIZER NUTRIENT                      | POUND | 161            | 161                          |                                   |                           |
| 25000600  | POTASSIUM FERTILIZER NUTRIENT                       | POUND | 161            | 161                          |                                   |                           |
| 25100115  | MULCH, METHOD 2                                     | ACRE  | 1.25           | 1.25                         |                                   |                           |
| 25100630  | EROSION CONTROL BLANKET                             | SQ YD | 3470           | 3470                         |                                   |                           |
| 28000250  | TEMPORARY EROSION CONTROL SEEDING                   | POUND | 220            | 220                          |                                   |                           |
| 28000400  | PERIMETER EROSION BARRIER                           | FOOT  | 1626           | 1626                         |                                   |                           |
| 28000500  | INLET AND PIPE PROTECTION                           | EACH  | 121            | 121                          |                                   |                           |
| 30300112  | AGGREGATE SUBGRADE IMPROVEMENT 12"                  | SQ YD | 22242          | 22242                        |                                   |                           |
| 31100300  | SUBBASE GRANULAR MATERIAL, TYPE A 4"                | SQ YD | 22242          | 22242                        |                                   |                           |
| 31101200  | SUBBASE GRANULAR MATERIAL, TYPE B 4"                | SQ YD | 8066           | 3217                         | 4849                              |                           |
| 40200710  | AGGREGATE SURFACE COURSE, TYPE A 10"                | SQ YD | 7              | 7                            |                                   |                           |
| 40201000  | AGGREGATE FOR TEMPORARY ACCESS                      | TON   | 403            | 403                          |                                   |                           |
| 40800050  | INCIDENTAL HOT-MIX ASPHALT SURFACING                | TON   | 34             | 34                           |                                   |                           |
| 42000301  | PORTLAND CEMENT CONCRETE PAVEMENT 8" (JOINTED)      | SQ YD | 19316          | 19033                        |                                   | 283                       |
| 42300200  | PORTLAND CEMENT CONCRETE DRIVEWAY PAVEMENT, 6 INCH  | SQ YD | 1104           | 1104                         |                                   |                           |
| 42300400  | PORTLAND CEMENT CONCRETE DRIVEWAY PAVEMENT, 8 INCH  | SQ YD | 370            | 370                          |                                   |                           |
| 42400100  | PORTLAND CEMENT CONCRETE SIDEWALK 4 INCH            | SQ FT | 47181          | 12687                        | 34494                             |                           |
| 42400800  | DETECTABLE WARNINGS                                 | SQ FT | 277            | 277                          |                                   |                           |
| 44000100  | PAVEMENT REMOVAL                                    | SQ YD | 23872          | 23589                        |                                   | 283                       |
| 44000200  | DRIVEWAY PAVEMENT REMOVAL                           | SQ YD | 1428           | 1428                         |                                   |                           |
| 44000500  | COMBINATION CURB AND GUTTER REMOVAL                 | FOOT  | 9217           | 9217                         |                                   |                           |
| 44000600  | SIDEWALK REMOVAL                                    | SQ FT | 135            | 135                          |                                   |                           |
| 50800105  | REINFORCEMENT BARS                                  | POUND | 17             | 17                           |                                   |                           |
| 54002020  | EXPANSION BOLTS 3/4 INCH                            | EACH  | 4              | 4                            |                                   |                           |
| 54213660  | PRECAST REINFORCED CONCRETE FLARED END SECTIONS 15" | EACH  | 1              | 1                            |                                   |                           |
| 54248510  | CONCRETE COLLAR                                     | CU YD | 0.5            | 0.5                          |                                   |                           |
| 550A0340  | STORM SEWERS, CLASS A, TYPE 2 12"                   | FOOT  | 2575           | 2575                         |                                   |                           |
| 550A0360  | STORM SEWERS, CLASS A, TYPE 2 15"                   | FOOT  | 291            | 291                          |                                   |                           |
| 550A0380  | STORM SEWERS, CLASS A, TYPE 2 18"                   | FOOT  | 274            | 274                          |                                   |                           |
| 550A0410  | STORM SEWERS, CLASS A, TYPE 2 24"                   | FOOT  | 953            | 953                          |                                   |                           |
| 550A0430  | STORM SEWERS, CLASS A, TYPE 2 30"                   | FOOT  | 545            | 545                          |                                   |                           |
| 550A0450  | STORM SEWERS, CLASS A, TYPE 2 36"                   | FOOT  | 134            | 134                          |                                   |                           |

| PROPOSED ROADWAY IMPROVEMENTS - SUMMARY OF QUANTITIES |   |        |                | CONSTRUCTION CODE            |                                   |                           |
|---|---|--------|----------------|------------------------------|-----------------------------------|---------------------------|
| CODE #  | DESCRIPTION   | UNITS  | TOTAL QUANTITY | 0004 - RDWY WORK STR 80%/20% | 0028 - MULTI-USE PATH TAP 80%/20% | 0043 - WM WORK 100% LOCAL |
| 55100500  | STORM SEWER REMOVAL 12"                                       | FOOT   | 961            | 961                          |                                   |                           |
| 55100700  | STORM SEWER REMOVAL 15"                                       | FOOT   | 1121           | 1121                         |                                   |                           |
| 55100900  | STORM SEWER REMOVAL 18"                                       | FOOT   | 1132           | 1132                         |                                   |                           |
| 55101200  | STORM SEWER REMOVAL 24"                                       | FOOT   | 313            | 313                          |                                   |                           |
| 55101400  | STORM SEWER REMOVAL 30"                                       | FOOT   | 13             | 13                           |                                   |                           |
| 55101600  | STORM SEWER REMOVAL 36"                                       | FOOT   | 424            | 424                          |                                   |                           |
| 56103100  | DUCTILE IRON WATER MAIN 8"                                    | FOOT   | 1113           |                              |                                   | 1113                      |
| 60108501  | PIPE UNDERDRAINS, TYPE 3                                      | FOOT   | 8387           | 8387                         |                                   |                           |
| 60236200  | INLETS, TYPE A, TYPE 8 GRATE                                  | EACH   | 2              | 2                            |                                   |                           |
| 60237466  | INLETS, TYPE A, TYPE 23 FRAME AND GRATE                       | EACH   | 2              | 2                            |                                   |                           |
| 60240301  | INLETS, TYPE B, TYPE 8 GRATE                                  | EACH   | 2              | 2                            |                                   |                           |
| 60500040  | REMOVING MANHOLES   | EACH   | 2              | 2                            |                                   |                           |
| 60500060  | REMOVING INLETS   | EACH   | 38             | 38                           |                                   |                           |
| 60605000  | COMBINATION CONCRETE CURB AND GUTTER, TYPE B-6.24             | FOOT   | 9378           | 9378                         |                                   |                           |
| 66900200  | NON-SPECIAL WASTE DISPOSAL                                    | CU YD  | 115            | 115                          |                                   |                           |
| 66900530  | SOIL DISPOSAL ANALYSIS  | EACH   | 1              | 1                            |                                   |                           |
| 66901001  | REGULATED SUBSTANCES PRE-CONSTRUCTION PLAN                    | L SUM  | 1              | 1                            |                                   |                           |
| 66901003  | REGULATED SUBSTANCES FINAL CONSTRUCTION REPORT                | L SUM  | 1              | 1                            |                                   |                           |
| 66901006  | REGULATED SUBSTANCES MONITORING                               | CAL DA | 2              | 2                            |                                   |                           |
| 67100100  | MOBILIZATION  | L SUM  | 1              | 1                            |                                   |                           |
| 70103815  | TRAFFIC CONTROL SURVEILLANCE                                  | CAL DA | 270            | 270                          |                                   |                           |
| 70107025  | CHANGEABLE MESSAGE SIGN                                       | CAL DA | 270            | 270                          |                                   |                           |
| 70300150  | SHORT TERM PAVEMENT MARKING REMOVAL                           | SQ FT  | 1999           | 1999                         |                                   |                           |
| 70307100  | TEMPORARY PAVEMENT MARKING LETTERS AND SYMBOLS - TYPE IV TAPE | SQ FT  | 654            | 654                          |                                   |                           |
| 70307120  | TEMPORARY PAVEMENT MARKING - LINE 4" - TYPE IV TAPE           | FOOT   | 15178          | 15178                        |                                   |                           |
| 70307160  | TEMPORARY PAVEMENT MARKING - LINE 12" - TYPE IV TAPE          | FOOT   | 100            | 100                          |                                   |                           |
| 72000100  | SIGN PANEL - TYPE 1   | SQ FT  | 206            | 206                          |                                   |                           |
| 72000200  | SIGN PANEL - TYPE 2   | SQ FT  | 10             | 10                           |                                   |                           |
| 72400310  | REMOVE SIGN PANEL - TYPE 1                                    | SQ FT  | 182            | 182                          |                                   |                           |
| 72400320  | REMOVE SIGN PANEL - TYPE 2                                    | SQ FT  | 10             | 10                           |                                   |                           |
| 72800100  | TELESCOPING STEEL SIGN SUPPORT                                | FOOT   | 544            | 544                          |                                   |                           |
| 78009000  | MODIFIED URETHANE PAVEMENT MARKING - LETTERS AND SYMBOLS      | SQ FT  | 263            | 263                          |                                   |                           |
| 78009004  | MODIFIED URETHANE PAVEMENT MARKING - LINE 4"                  | FOOT   | 10838          | 10838                        |                                   |                           |
| 78009008  | MODIFIED URETHANE PAVEMENT MARKING - LINE 8"                  | FOOT   | 628            | 628                          |                                   |                           |
| 78009024  | MODIFIED URETHANE PAVEMENT MARKING - LINE 24"                 | FOOT   | 459            | 459                          |                                   |                           |
| 78011000  | GROOVING FOR RECESSED PAVEMENT MARKING, LETTERS AND SYMBOLS   | SQ FT  | 263            | 263                          |                                   |                           |
| 78011025  | GROOVING FOR RECESSED PAVEMENT MARKING 5"                     | FOOT   | 10838          | 10838                        |                                   |                           |
| 78011045  | GROOVING FOR RECESSED PAVEMENT MARKING 9"                     | FOOT   | 628            | 628                          |                                   |                           |
| 78011125  | GROOVING FOR RECESSED PAVEMENT MARKING 25"                    | FOOT   | 459            | 459                          |                                   |                           |
| 78300202  | PAVEMENT MARKING REMOVAL - WATER BLASTING                     | SQ FT  | 4752           | 4752                         |                                   |                           |
| X0325714  | FLASHING BEACON, POST MOUNTED, SOLAR POWERED INSTALLATION     | EACH   | 2              | 2                            |                                   |                           |

| PROPOSED ROADWAY IMPROVEMENTS - SUMMARY OF QUANTITIES |   |       |                | CONSTRUCTION CODE            |                                   |                           |
|---|---|-------|----------------|------------------------------|-----------------------------------|---------------------------|
| CODE #  | DESCRIPTION   | UNITS | TOTAL QUANTITY | 0004 - RDWY WORK STR 80%/20% | 0028 - MULTI-USE PATH TAP 80%/20% | 0043 - WM WORK 100% LOCAL |
| X0327301  | RELOCATE EXISTING MAILBOX                                   | EACH  | 29             |                              |                                   |                           |
| X1200246  | WATERMAIN CASING PIPE                                       | FOOT  | 652            |                              |                                   | 652                       |
| X2090215  | SELECT GRANULAR BACKFILL (SPECIAL)                          | CU YD | 1,078          |                              |                                   | 1,078                     |
| X2800012  | REMOVE AND RELOCATE SIGN PANEL AND POLE ASSEMBLY            | EACH  | 1              | 1                            |                                   |                           |
| X4400110  | TEMPORARY PAVEMENT REMOVAL                                  | SQ YD | 104            | 104                          |                                   |                           |
| X5220101  | RETAINING WALL REMOVAL                                      | SQ FT | 164            | 164                          |                                   |                           |
| X5427602  | REMOVE EXISTING FLARED END SECTION                          | EACH  | 2              | 2                            |                                   |                           |
| X5610806  | PRESSURE CONNECTION TO EXISTING WATER MAIN                  | EACH  | 11             |                              |                                   | 11                        |
| X5610900  | DUCTILE IRON WATER MAIN, 8" DIAMETER, RESTRAINED JOINT PIPE | FOOT  | 2537           |                              |                                   | 2537                      |
| X5640150  | FIRE HYDRANT ASSEMBLY COMPLETE                              | EACH  | 13             |                              |                                   | 13                        |
| X6020065  | INLETS, TYPE G-1, DOUBLE (SPECIAL)                          | EACH  | 5              | 5                            |                                   |                           |
| X6020082  | INLETS, TYPE G-1  | EACH  | 3              | 3                            |                                   |                           |
| X6021065  | INLETS, TYPE G-1 (SPECIAL)                                  | EACH  | 37             | 37                           |                                   |                           |
| X6021815  | INLET-MANHOLE, TYPE G-1, 5' DIAMETER                        | EACH  | 6              | 6                            |                                   |                           |
| X6021825  | INLET-MANHOLE, TYPE G-1, 5' DIAMETER (SPECIAL)              | EACH  | 11             | 11                           |                                   |                           |
| X6026616  | GATE VALVE 8" WITH VAULT BOX                                | EACH  | 10             |                              |                                   | 10                        |
| X6640304  | CHAIN LINK FENCE TO BE REMOVED AND RE-ERECTED               | FOOT  | 65             | 65                           |                                   |                           |
| X7010216  | TRAFFIC CONTROL AND PROTECTION, (SPECIAL)                   | L SUM | 1              | 0.8                          |                                   | 0.2                       |
| XX000836  | PRESSURE TESTING AND DISINFECTION                           | L SUM | 1              |                              |                                   | 1                         |
| Z0076600  | TRAINEES  | hour  | 2000           |                              |                                   |                           |
| Z0013798  | CONSTRUCTION LAYOUT   | L SUM | 1              | 1                            |                                   |                           |
| Z0076604  | TRAINEES TRAINING PROGRAM GRADUATE                          | hour  | 2000           |                              |                                   |                           |
| Z0056668  | STORM SEWERS, TYPE 2, WATER MAIN QUALITY PIPE, 12"          | FOOT  | 75             | 75                           |                                   |                           |

△0042

\* SPECIALTY ITEM

MODEL: SOQ\_1 (Sheet)  
FILE NAME: L:\Projects\CO21001201402\_Maxwell\Recon\120102\Roadway\Sheets\Maxwell\_SOQ.dgn



|                        |                 |                          |
|------------------------|-----------------|--------------------------|
| USER NAME = khinds     | DESIGNED - KH   | REVISED - 10/22/2024 CJW |
|                        | DRAWN - KH      | REVISED -                |
|                        | CHECKED - CJW   | REVISED -                |
| PLOT DATE = 10/28/2024 | DATE - AUG 2024 | REVISED -                |

STATE OF ILLINOIS  
DEPARTMENT OF TRANSPORTATION

SUMMARY OF QUANTITIES  
MAXWELL ROAD RECONSTRUCTION

SCALE: SHEET 1 OF 1 SHEETS STA. TO STA.

|                           |                |        |              |           |
|---------------------------|----------------|--------|--------------|-----------|
| F.A.U. RTE.               | SECTION        | COUNTY | TOTAL SHEETS | SHEET NO. |
| 6577                      | 19-00115-01-PV | PEORIA | 124          | 3         |
| CONTRACT NO. 89816        |                |        |              |           |
| ILLINOIS FED. AID PROJECT |                |        |              |           |

| DRAINAGE STRUCTURE SCHEDULE |          | PRECAST REINFORCED CONCRETE FLARED END SECTIONS 15" | INLETS, TYPE A, TYPE 8 GRATE | INLETS, TYPE B, TYPE 8 GRATE | INLETS, TYPE G-1, DOUBLE (SPECIAL) | INLETS, TYPE G-1 | INLETS, TYPE G-1 (SPECIAL) | INLET-MANHOLE, TYPE G-1, 5' DIAMETER | INLET-MANHOLE, TYPE G-1, 5' DIAMETER (SPECIAL) |
|-----------------------------|----------|---|------------------------------|------------------------------|------------------------------------|------------------|----------------------------|--------------------------------------|--|
|                             |          | 54213660  | 60236200                     | 60240301                     | X6020065                           | X6020082         | X6021065                   | X6021815                             | X6021825                                       |
| STATION                     | O/S      | EACH  | EACH                         | EACH                         | EACH                               | EACH             | EACH                       | EACH                                 | EACH   |
| 100+50.00                   | 18.0' LT |   |                              |                              |                                    |                  | 1                          |                                      |  |
| 100+50.00                   | 20.8' RT |   |                              |                              |                                    |                  | 1                          |                                      |  |
| 104+15.00                   | 18.0' LT |   |                              |                              |                                    |                  | 1                          |                                      |  |
| 105+90.00                   | 18.0' LT |   |                              |                              |                                    |                  | 1                          |                                      |  |
| 105+90.00                   | 18.0' RT |   |                              |                              |                                    |                  | 1                          |                                      |  |
| 107+50.00                   | 18.0' RT |   |                              |                              |                                    |                  | 1                          |                                      |  |
| 108+02.00                   | 18.0' RT |   |                              |                              |                                    |                  |                            |                                      |  |
| 108+09.00                   | 18.0' RT |   |                              |                              | 1                                  |                  |                            |                                      |  |
| 108+02.00                   | 18.0' LT |   |                              |                              |                                    |                  |                            |                                      |  |
| 108+09.00                   | 18.0' LT |   |                              |                              | 1                                  |                  |                            |                                      |  |
| 108+60.00                   | 18.0' RT |   |                              |                              |                                    |                  | 1                          |                                      |  |
| 109+36.44                   | 18.0' RT |   |                              |                              |                                    |                  | 1                          |                                      |  |
| 109+36.44                   | 18.0' LT |   |                              |                              |                                    |                  |                            |                                      | 1  |
| 110+90.00                   | 18.0' LT |   |                              |                              |                                    |                  | 1                          |                                      |  |
| 111+90.00                   | 18.0' LT |   |                              |                              |                                    |                  | 1                          |                                      |  |
| 111+90.00                   | 18.0' RT |   |                              |                              |                                    |                  | 1                          |                                      |  |
| 113+70.00                   | 18.0' LT |   |                              |                              |                                    |                  | 1                          |                                      |  |
| 115+90.00                   | 18.0' LT |   |                              |                              |                                    | 1                |                            |                                      |  |
| 116+50.00                   | 18.0' LT |   |                              |                              |                                    | 1                |                            |                                      |  |
| 116+60.00                   | 37.1' RT |   | 1                            |                              |                                    |                  |                            |                                      |  |
| 117+00.00                   | 18.0' LT |   |                              |                              |                                    | 1                |                            |                                      |  |
| 117+50.00                   | 18.0' RT |   |                              |                              |                                    |                  | 1                          |                                      |  |
| 117+50.00                   | 18.0' LT |   |                              |                              |                                    |                  |                            | 1                                    |  |
| 117+80.75                   | 18.0' LT |   |                              |                              |                                    |                  |                            | 1                                    |  |
| 117+80.75                   | 18.0' RT |   |                              |                              |                                    |                  |                            | 1                                    |  |
| 117+87.79                   | 18.0' RT |   |                              |                              | 1                                  |                  |                            |                                      |  |
| 117+88.75                   | 18.0' RT |   |                              |                              |                                    |                  |                            | 1                                    |  |
| 118+20.00                   | 18.0' LT |   |                              |                              |                                    |                  |                            | 1                                    |  |
| 118+70.00                   | 18.0' RT |   |                              |                              |                                    |                  | 1                          |                                      |  |
| 118+70.00                   | 18.0' LT |   |                              |                              |                                    |                  |                            | 1                                    |  |
| 119+20.00                   | 18.0' LT |   |                              |                              |                                    |                  |                            | 1                                    |  |
| 120+10.00                   | 49.5' RT |   |                              |                              |                                    |                  | 1                          |                                      |  |
| 120+10.00                   | 18.0' LT |   |                              |                              |                                    |                  |                            |                                      | 1  |
| 120+50.00                   | 49.5' RT |   |                              |                              |                                    |                  | 1                          |                                      |  |
| 121+75.02                   | 42.6' LT | 1   |                              |                              |                                    |                  |                            |                                      |  |
| 121+85.00                   | 18.0' RT |   |                              |                              |                                    |                  | 1                          |                                      |  |
| 121+85.00                   | 18.0' LT |   |                              |                              |                                    |                  |                            |                                      | 1  |
| 124+15.00                   | 18.0' LT |   |                              |                              |                                    |                  |                            |                                      | 1  |
| 124+27.00                   | 45.5' RT |   |                              |                              |                                    |                  | 1                          |                                      |  |
| 124+63.00                   | 45.5' RT |   |                              |                              |                                    |                  | 1                          |                                      |  |
| 125+15.00                   | 18.0' RT |   |                              |                              |                                    |                  | 1                          |                                      |  |
| 125+15.00                   | 18.0' LT |   |                              |                              |                                    |                  |                            |                                      | 1  |
| 126+65.00                   | 18.0' RT |   |                              |                              |                                    |                  | 1                          |                                      |  |
| 126+60.74                   | 44.0' RT |   | 1                            |                              |                                    |                  |                            |                                      |  |
| 127+40.00                   | 18.0' RT |   |                              |                              |                                    |                  | 1                          |                                      |  |
| 127+40.00                   | 18.0' LT |   |                              |                              |                                    |                  |                            |                                      | 1  |
| 129+70.00                   | 22.0' RT |   |                              |                              |                                    |                  | 1                          |                                      |  |
| 129+80.00                   | 18.0' LT |   |                              |                              |                                    |                  |                            |                                      | 1  |
| 130+20.00                   | 25.0' RT |   |                              |                              |                                    |                  | 1                          |                                      |  |
| 130+90.00                   | 18.0' RT |   |                              |                              |                                    |                  | 1                          |                                      |  |
| 130+90.00                   | 18.0' LT |   |                              |                              |                                    |                  |                            |                                      | 1  |
| 132+90.00                   | 18.0' RT |   |                              |                              |                                    |                  | 1                          |                                      |  |
| 132+90.00                   | 18.0' LT |   |                              |                              |                                    |                  |                            |                                      | 1  |
| 133+60.00                   | 18.0' LT |   |                              |                              |                                    |                  | 1                          |                                      |  |
| 134+45.00                   | 18.0' LT |   |                              |                              |                                    |                  | 1                          |                                      |  |
| 134+45.00                   | 18.0' RT |   |                              |                              |                                    |                  | 1                          |                                      |  |
| 135+25.00                   | 18.0' LT |   |                              |                              |                                    |                  | 1                          |                                      |  |
| 135+75.00                   | 18.0' LT |   |                              |                              |                                    |                  | 1                          |                                      |  |
| 136+25.00                   | 18.0' LT |   |                              |                              |                                    |                  | 1                          |                                      |  |
| 136+25.00                   | 18.0' RT |   |                              |                              |                                    |                  | 1                          |                                      |  |
| 302+53.00                   | 13.0' LT |   |                              |                              |                                    |                  |                            |                                      | 1  |
| 302+53.00                   | 13.0' RT |   |                              |                              |                                    |                  |                            |                                      | 1  |
| 302+53.28                   | 36.3' LT |   |                              | 1                            |                                    |                  |                            |                                      |  |
| 304+46.00                   | 13.0' LT |   |                              |                              |                                    |                  |                            |                                      |  |
| 304+53.00                   | 13.0' LT |   |                              |                              |                                    |                  |                            |                                      |  |
| 304+46.00                   | 13.0' RT |   |                              |                              |                                    |                  |                            |                                      |  |
| 304+53.00                   | 13.0' RT |   |                              |                              |                                    |                  |                            |                                      |  |
| 306+20.00                   | 13.0' LT |   |                              |                              |                                    |                  | 1                          |                                      |  |
| 306+20.00                   | 13.0' RT |   |                              |                              |                                    |                  | 1                          |                                      |  |
| 306+22.64                   | 35.0' LT |   |                              | 1                            |                                    |                  |                            |                                      |  |
| 307+60.00                   | 13.0' LT |   |                              |                              |                                    |                  | 1                          |                                      |  |
| 308+40.00                   | 13.0' LT |   |                              |                              |                                    |                  | 1                          |                                      |  |
| TOTAL:                      |          | 1   | 2                            | 2                            | 5                                  | 3                | 37                         | 6                                    | 11   |

| MAILBOX RELOCATION SCHEDULE |       |    | RELOCATE EXISTING MAILBOX |
|-----------------------------|-------|----|---------------------------|
| LOCATION                    |       |    | X0327301                  |
| STATION                     | O/S   |    | EACH                      |
| 102+11.22                   | 25.6' | LT | 1                         |
| 102+66.10                   | 25.3' | LT | 1                         |
| 103+52.70                   | 25.1' | LT | 1                         |
| 104+23.80                   | 26.3' | LT | 1                         |
| 104+92.94                   | 24.6' | LT | 1                         |
| 107+27.87                   | 25.3' | LT | 1                         |
| 110+31.32                   | 25.4' | LT | 1                         |
| 111+53.11                   | 25.6' | LT | 1                         |
| 111+90.70                   | 25.4' | RT | 1                         |
| 113+12.76                   | 25.3' | LT | 1                         |
| 113+64.44                   | 25.7' | RT | 1                         |
| 114+36.57                   | 26.6' | LT | 1                         |
| 114+69.01                   | 25.9' | RT | 1                         |
| 115+63.08                   | 25.6' | LT | 1                         |
| 116+39.22                   | 25.8' | LT | 1                         |
| 117+43.21                   | 25.1' | RT | 1                         |
| 118+32.90                   | 26.4' | RT | 1                         |
| 118+71.02                   | 26.5' | RT | 1                         |
| 120+82.11                   | 25.4' | LT | 1                         |
| 121+27.41                   | 25.9' | LT | 1                         |
| 121+28.90                   | 25.7' | LT | 1                         |
| 121+30.76                   | 25.6' | LT | 1                         |
| 122+54.37                   | 25.8' | LT | 1                         |
| 122+98.76                   | 26.3' | RT | 1                         |
| 123+00.98                   | 26.3' | RT | 1                         |
| 123+43.58                   | 25.0' | LT | 1                         |
| 124+56.54                   | 56.7' | LT | 1                         |
| 126+24.95                   | 26.7' | RT | 1                         |
| 128+39.67                   | 27.1' | RT | 1                         |
| TOTAL:                      |       |    | 29                        |

| DETECTABLE WARNING SCHEDULE |       | DETECTABLE WARNINGS |
|-----------------------------|-------|---------------------|
| LOCATION                    |       | 42400800            |
| STATION                     | RT/LT | SQ FT               |
| 100+38.34                   | LT    | 11                  |
| 100+38.36                   | RT    | 12                  |
| 115+55.61                   | RT    | 27                  |
| 116+04.38                   | RT    | 27                  |
| 120+00.67                   | RT    | 26                  |
| 120+55.48                   | RT    | 26                  |
| 121+31.25                   | LT    | 14                  |
| 121+73.64                   | LT    | 14                  |
| 124+20.98                   | RT    | 26                  |
| 124+50.75                   | LT    | 14                  |
| 124+68.99                   | RT    | 26                  |
| 125+00.65                   | LT    | 14                  |
| 129+59.92                   | LT    | 10                  |
| 129+59.93                   | RT    | 10                  |
| 129+78.56                   | RT    | 10                  |
| 130+14.94                   | RT    | 10                  |
| TOTAL:                      |       | 277                 |

MODEL: Schedules\_2 [Sheet]  
 FILE NAME: L:\P\02\Roadway\Sheets\Maxwell\_Schedules.dgn

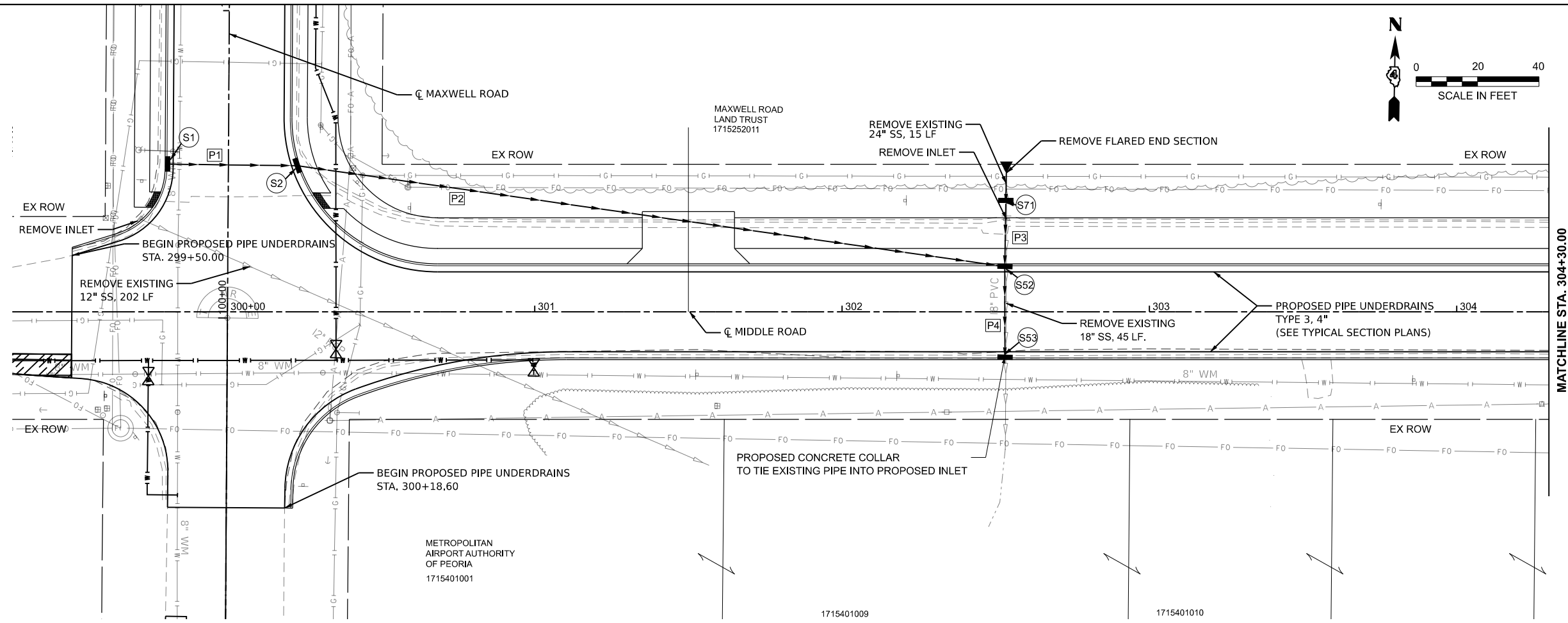
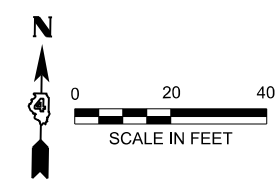
|                        |                 |                          |
|------------------------|-----------------|--------------------------|
| USER NAME = khindes    | DESIGNED - KH   | REVISED - 10/22/2024 CJW |
|                        | DRAWN - KH      | REVISED -                |
|                        | CHECKED - CJW   | REVISED -                |
| PLOT DATE = 10/22/2024 | DATE - AUG 2024 | REVISED -                |

**STATE OF ILLINOIS  
DEPARTMENT OF TRANSPORTATION**

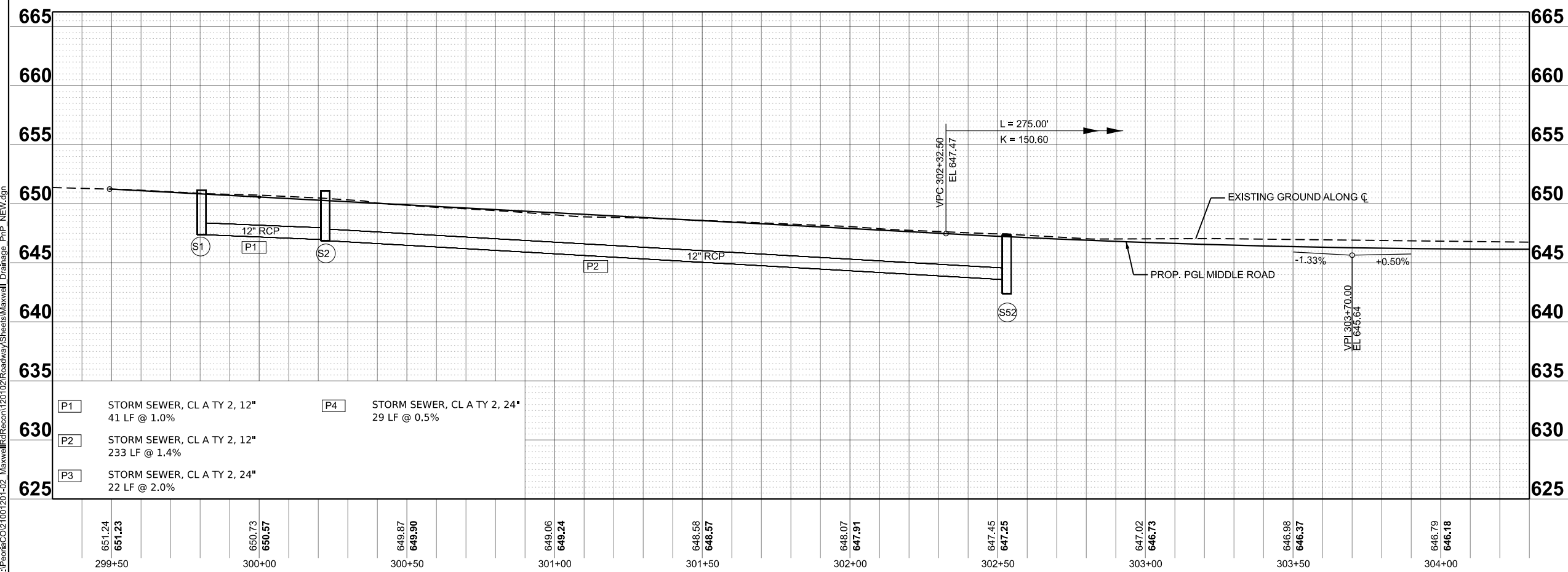
**QUANTITY SCHEDULES  
MAXWELL ROAD RECONSTRUCTION**

SCALE: SHEET 2 OF 7 SHEETS STA. TO STA.

|                           |                |        |              |           |
|---------------------------|----------------|--------|--------------|-----------|
| F.A.U. RTE.               | SECTION        | COUNTY | TOTAL SHEETS | SHEET NO. |
| 6577                      | 19-00115-01-PV | PEORIA | 124          | 8         |
| CONTRACT NO. 89816        |                |        |              |           |
| ILLINOIS FED. AID PROJECT |                |        |              |           |



- (S1) INLET TYPE G-1 SP  
STD 604001-D4  
STA. 100+50.00, 18.0' LT  
RIM = 650.71  
INV (P1) = 647.37
- (S2) INLET TYPE G-1 SP  
STD 604001-D4  
STA. 100+50.00, 20.8' RT  
RIM = 650.69  
INV (P1) = 646.96  
INV (P2) = 646.86
- (S52) IN-MH TYPE G-1 5' DIA. SP  
STD 604001-D4  
STA. 302+53.00, 13.0' LT  
RIM = 646.91  
INV (P2) = 643.58  
INV (P3) = 642.58  
INV (P4) = 642.48
- (S53) IN-MH TYPE G-1 5' DIA. SP  
STD 604001-D4  
STA. 302+53.00, 13.0' RT  
RIM = 646.91  
INV (P4) = 642.34  
INV EXIST. = 640.48
- (S71) INLET TYPE B  
TYPE 8 GRATE  
STA. 302+53.28, 36.3' LT  
RIM = 648.10  
INV (P3) = 643.02



|      |  |      |   |
|------|--|------|---|
| (P1) | STORM SEWER, CL A TY 2, 12"<br>41 LF @ 1.0%  | (P4) | STORM SEWER, CL A TY 2, 24"<br>29 LF @ 0.5% |
| (P2) | STORM SEWER, CL A TY 2, 12"<br>233 LF @ 1.4% |      |   |
| (P3) | STORM SEWER, CL A TY 2, 24"<br>22 LF @ 2.0%  |      |   |

|        |        |        |        |        |        |        |        |        |        |        |        |        |        |        |        |        |        |        |        |
|--------|--------|--------|--------|--------|--------|--------|--------|--------|--------|--------|--------|--------|--------|--------|--------|--------|--------|--------|--------|
| 651.24 | 651.23 | 650.73 | 650.57 | 649.87 | 649.90 | 649.06 | 649.24 | 648.58 | 648.57 | 648.07 | 647.91 | 647.45 | 647.25 | 647.02 | 646.73 | 646.98 | 646.37 | 646.79 | 646.18 |
| 299+50 |        | 300+00 |        | 300+50 |        | 301+00 |        | 301+50 |        | 302+00 |        | 302+50 |        | 303+00 |        | 303+50 |        | 304+00 |        |

MODEL: P:\Midwest\CL - Plan 9 (Sheet)  
 FILE NAME: L:\Pond\CO2\100\120\1-02\_MaxwellRd\Recon\120102\Roadway\Sheets\Maxwell\_Drainage\_PnP\_NEW.dgn



|                        |                 |                          |
|------------------------|-----------------|--------------------------|
| USER NAME = khinds     | DESIGNED - IHS  | REVISED - 10/22/2024 CJW |
|                        | DRAWN - IHS     | REVISED -                |
|                        | CHECKED - CJW   | REVISED -                |
| PLOT DATE = 10/22/2024 | DATE - AUG 2024 | REVISED -                |

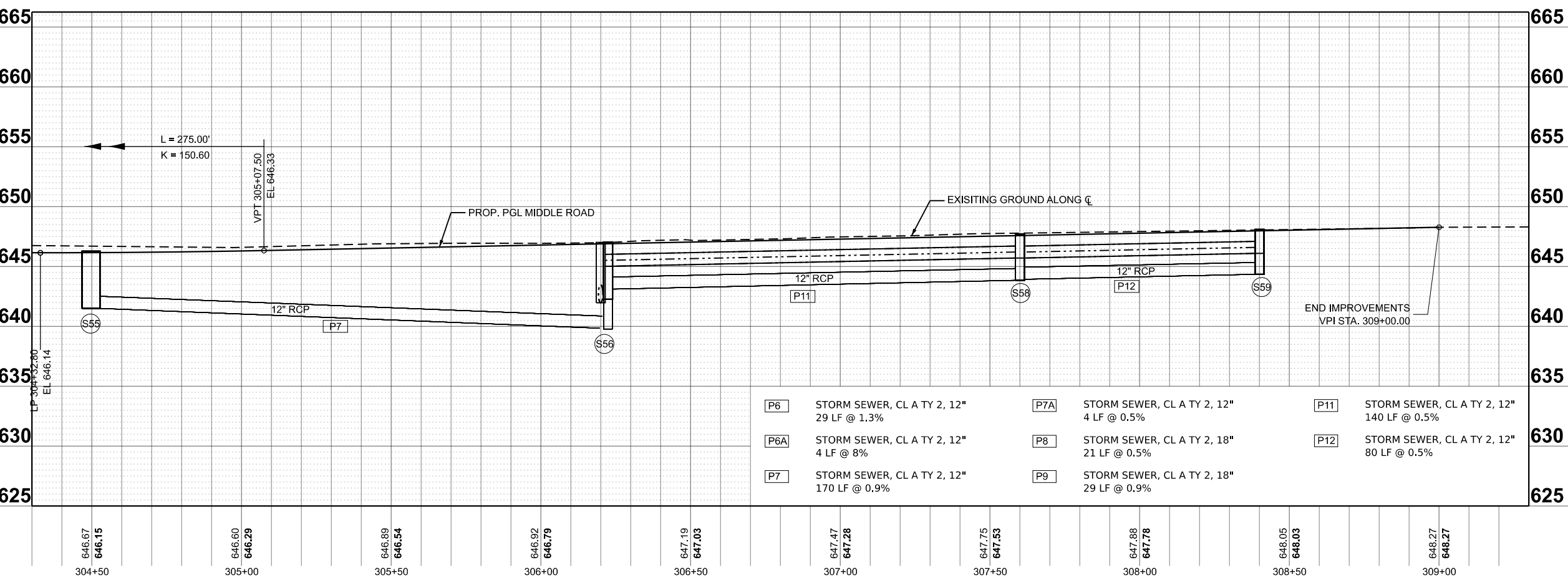
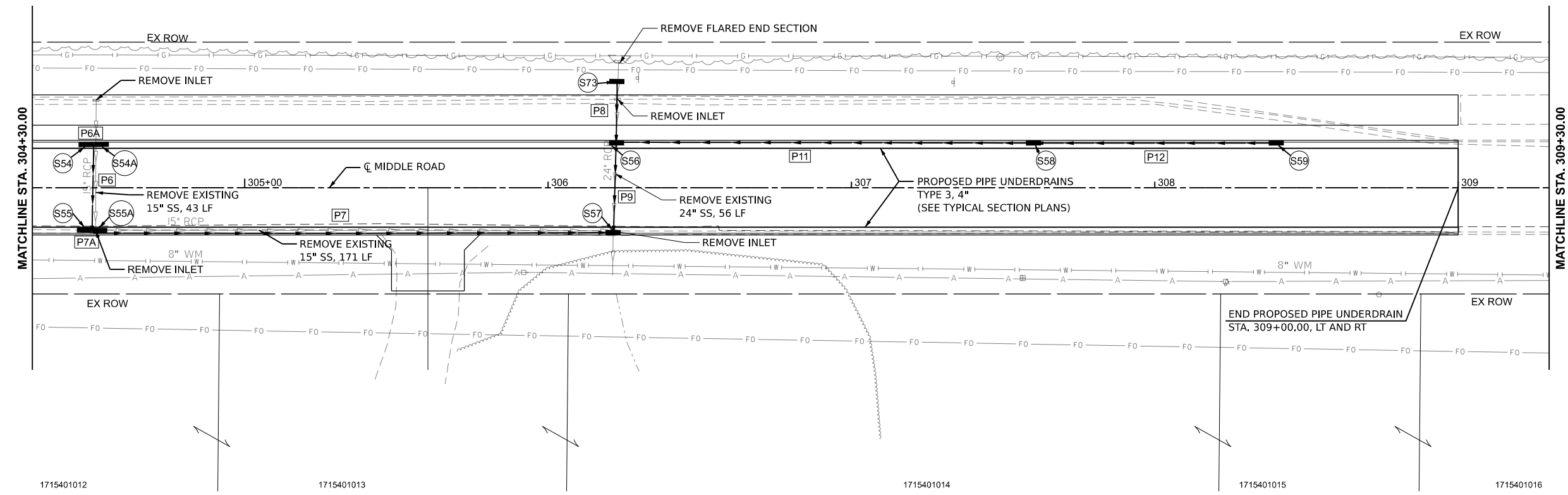
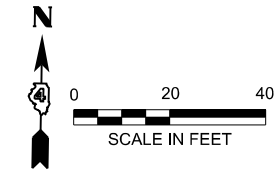
**STATE OF ILLINOIS**  
**DEPARTMENT OF TRANSPORTATION**

**DRAINAGE PLAN AND PROFILE**  
**MAXWELL ROAD RECONSTRUCTION**

SCALE: 1"=20'      SHEET 9 OF 10 SHEETS      STA. 299+30.00 TO STA. 304+30.00

|                           |                |        |              |           |
|---------------------------|----------------|--------|--------------|-----------|
| F.A.U. RTE.               | SECTION        | COUNTY | TOTAL SHEETS | SHEET NO. |
| 6577                      | 19-00115-01-PV | PEORIA | 124          | 45        |
| CONTRACT NO. 89816        |                |        |              |           |
| ILLINOIS FED. AID PROJECT |                |        |              |           |

MAXWELL ROAD  
LAND TRUST  
1715252011



|            |  |            |   |            |  |
|------------|--|------------|---|------------|--|
| <b>P6</b>  | STORM SEWER, CL A TY 2, 12"<br>29 LF @ 1.3%  | <b>P7A</b> | STORM SEWER, CL A TY 2, 12"<br>4 LF @ 0.5%  | <b>P11</b> | STORM SEWER, CL A TY 2, 12"<br>140 LF @ 0.5% |
| <b>P6A</b> | STORM SEWER, CL A TY 2, 12"<br>4 LF @ 8%     | <b>P8</b>  | STORM SEWER, CL A TY 2, 18"<br>21 LF @ 0.5% | <b>P12</b> | STORM SEWER, CL A TY 2, 12"<br>80 LF @ 0.5%  |
| <b>P7</b>  | STORM SEWER, CL A TY 2, 12"<br>170 LF @ 0.9% | <b>P9</b>  | STORM SEWER, CL A TY 2, 18"<br>29 LF @ 0.9% |            |  |

- S54** INLET TYPE G-1 DOUBLE SP  
STD 604001-D4  
STA. 304+46.00, 13.0' LT  
RIM = 645.85  
INV (P6) = 642.10  
INV (P6A) = 642.20
- S54A** INLET TYPE G-1 DOUBLE SP  
STD 604001-D4  
STA. 304+53.00, 13.0' LT  
RIM = 645.85  
INV (P6A) = 642.52
- S55** INLET TYPE G-1 DOUBLE SP  
STD 604001-D4  
STA. 304+46.00, 13.0' RT  
RIM = 645.85  
INV (P6) = 641.72  
INV (P7A) = 641.62
- S55A** INLET TYPE G-1 DOUBLE SP  
STD 604001-D4  
STA. 304+53.00, 13.0' RT  
RIM = 645.85  
INV (P7) = 641.50  
INV (P7A) = 641.60
- S56** INLET TYPE G-1 SP  
STD 604001-D4  
STA. 306+22.45, 13.0' LT  
RIM = 646.59  
INV (P8) = 642.76  
INV (P9) = 642.26  
INV (P11) = 643.14
- S57** INLET TYPE G-1 SP  
STD 604001-D4  
STA. 306+21.43, 13.0' RT  
RIM = 646.59  
INV (P7) = 639.87  
INV (P9) = 642.00  
INV EXIST. = 638.95
- S58** INLET TYPE G-1 SP  
STD 604001-D4  
STA. 307+60.00, 13.0' LT  
RIM = 647.28  
INV (P11) = 643.84  
INV (P12) = 643.94
- S59** INLET TYPE G-1 SP  
STD 604001-D4  
STA. 308+40.00, 13.0' LT  
RIM = 647.67  
INV (P12) = 644.34
- S73** INLET TYPE B  
TYPE 8 GRATE  
STA. 306+22.64, 35.0' LT  
RIM = 648.66  
INV (P8) = 642.61

MODEL: P:\Mfd\CL - Plan 10 [Sheet]  
 FILE NAME: L:\P\Proj\CO2\1001201-02\_MaxwellRd\Recon\120102\Roadway\Sheets\Maxwell\_Drainage\_PnP\_NEW.dgn  
 License No. 184-00613 Copyright CMT, Inc.



|                        |                 |                          |
|------------------------|-----------------|--------------------------|
| USER NAME = khindes    | DESIGNED - IHS  | REVISED - 10/22/2024 CJW |
|                        | DRAWN - IHS     |                          |
|                        | CHECKED - CJW   |                          |
| PLOT DATE = 10/22/2024 | DATE - AUG 2024 | REVISED -                |

STATE OF ILLINOIS  
DEPARTMENT OF TRANSPORTATION

**DRAINAGE PLAN AND PROFILE  
MAXWELL ROAD RECONSTRUCTION**

SCALE: 1"=20' SHEET 10 OF 10 SHEETS STA. 304+30.00 TO STA. 309+30.00

| F.A.U. RTE.               | SECTION        | COUNTY | TOTAL SHEETS | SHEET NO. |
|---------------------------|----------------|--------|--------------|-----------|
| 6577                      | 19-00115-01-PV | PEORIA | 124          | 46        |
| CONTRACT NO. 89816        |                |        |              |           |
| ILLINOIS FED. AID PROJECT |                |        |              |           |