

**STATE OF ILLINOIS**  
**DEPARTMENT OF PUBLIC WORKS AND BUILDINGS**  
**DIVISION OF HIGHWAYS**  
**PLANS FOR PROPOSED**  
**FEDERAL AID HIGHWAY**

FEDERAL AID ROUTE NO.	SEC.	COUNTY	TOTAL SHEETS	SHEET NO.
FR 61	531-2.1	COOK	111	1
S. P. R. REG. NO. 4		ILLINOIS PROJECT	U-184 (37)	

JOB NO. P-90-002-00

INDEX OF SHEETS ON SHEET NO. 2

IL 53 Mainline 287+00 10x12 016-0200  
 IL 53 SB Ramps To/From US14 016-0201  
     318+11 12'x8'  
     405+10  
 US 14 120+42 10x12 016-1200  
 US 14 110+00 10x12 016-1201

( S.B.I. ROUTE 53 ) F.A. ROUTE 61 SECTION 531-2.1 — COOK COUNTY  
 PROJECT U-184 (37)

C - 90 - 417 - 64

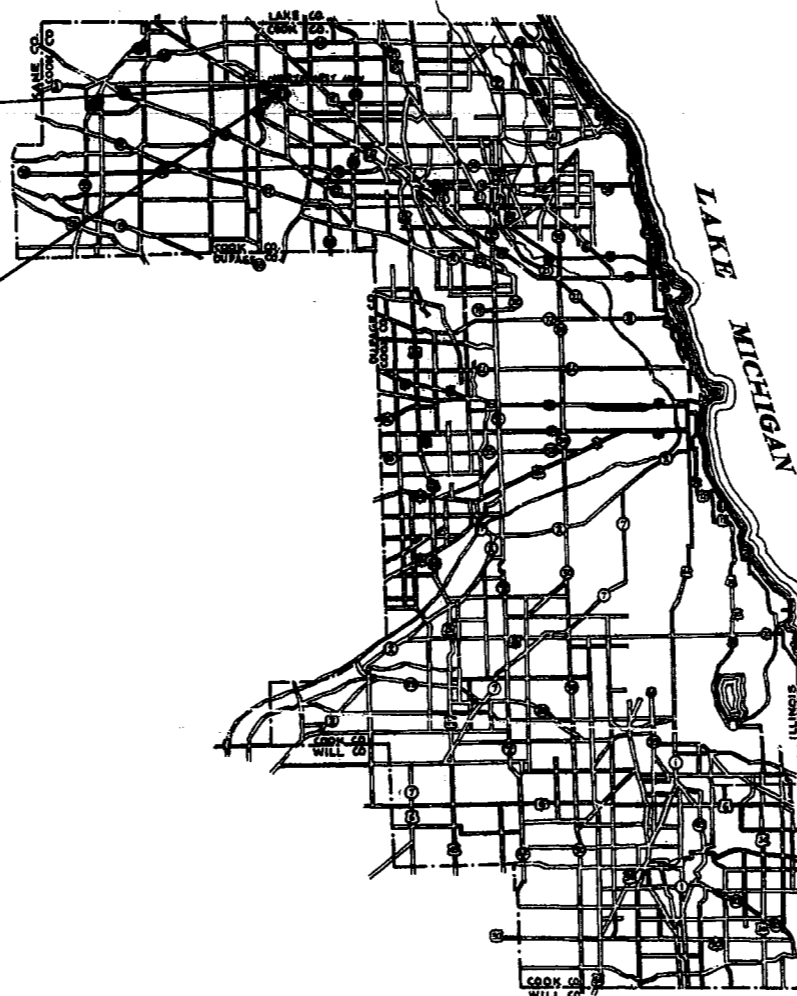
**GRADING, PAVING & DRAINAGE**  
**RELOCATED ROUTE 53**

GROSS LENGTH 2,577.07 LIN. FT. OR 0.488 MILES  
 NET LENGTH 2,577.07 LIN. FT. OR 0.488 MILES



PROJECT U-184(37)  
 IMPROVEMENT ENDS  
 STATION 297 + 95.10

PROJECT U-184(37)  
 IMPROVEMENT BEGINS  
 STATION 272 + 18.03



STATE OF ILLINOIS DEPARTMENT OF PUBLIC WORKS AND BUILDINGS DIVISION OF HIGHWAYS	
SUBMITTED	7-21-64 <i>C. A. Benning</i>
EXAMINED	7-22-64 <i>W. W. [unclear]</i>
PASSED	7-22-64 <i>[unclear]</i>
APPROVED	7-22-64 <i>[unclear]</i>
APPROVED	7-22-64 <i>Francis [unclear]</i>

DEPARTMENT OF COMMERCE BUREAU OF PUBLIC ROADS	
APPROVED	
DIVISION ENGINEER	DATE

CONTRACT NO. 23614

PLANS REVISED  
 JULY 24, 1964

08 NUMBER

COUNTY COOK SECTION 531-2.1 F. A. ROUTE 61

B. KENNEDY

PLANS PREPARED BY BUREAU OF DESIGN  
 APPROVED BY ASS'T DISTRICT ENGINEER-ENGINEERING  
 EXAMINED BY BUREAU OF CONSTRUCTION  
 EXAMINED BY BUREAU OF MAINTENANCE  
 EXAMINED BY BUREAU OF TRAFFIC  
 EXAMINED BY BUREAU OF MATERIALS  
 ENTIRE SECTION INSPECTED AND APPROVED  
 AS TO POLICY DISTRICT ENGINEER

*Albert Silber* DATE 3-19-64  
*Nathan C. Blasingame* DATE 3-19-64  
*Frank W. Jones* DATE 3-19-64  
*James A. Jones* DATE 3-19-64  
*Charles G. Seon* DATE 3-20-64  
*A. J. Jones* DATE 3-19-64  
*C.A. Bonowicz* DATE 7-21-64

ROUTE NO.	SECTION	COUNTY	TOTAL SHEETS	SHEET NO.
FA. 61	531-2.1	COOK	111	2
STA.	TO STA.			
U.S. BUR. PUB. ROADS, DIV. 4 ILLINOIS F.A. PROJECT				

## INDEX

## OF

## SHEETS

### SHEET NO.

- 1 COVER SHEET
- 2 INDEX OF SHEETS, SIGNATURES
- 3 SUMMARY OF QUANTITIES
- 4 GENERAL PLAN OF IMPROVEMENT
- 5 ALIGNMENT AND TIES
- 6 - 8 EXISTING TOPOGRAPHY
- 9 TYPICAL ROADWAY SECTIONS
- 10 - 12 PLAN - NORTHWEST HIGHWAY INTERCHANGE
- 13 - 16 PLAN & PROFILE - NORTHWEST HIGHWAY
- 17 - 18 PLAN & PROFILE - ROHLWING ROAD
- 19 - 20 PROFILE - MAIN LINE
- 21 - 24 PROFILES - RAMPS AT NORTHWEST HIGHWAY INTERCHANGE
- 25 - 28 PAVEMENT ELEVATIONS & JOINT DETAILS - MAIN LINE
- 29 - 30 PAVEMENT ELEVATIONS & JOINT DETAILS - RAMPS AT NORTHWEST HIGHWAY INTERCHANGE
- 31 - 34 PAVEMENT ELEVATIONS & JOINT DETAILS - NORTHWEST HIGHWAY
- 35 PAVEMENT ELEVATIONS & JOINT DETAILS - ROHLWING ROAD
- 36 - 37 PLAN OF EXISTING UTILITIES
- 38 - 40 DRAINAGE PLAN - NORTHWEST HIGHWAY INTERCHANGE
- 41 - 44 DRAINAGE PLAN & PROFILE - NORTHWEST HIGHWAY
- 45 DRAINAGE PLAN & PROFILE - ROHLWING ROAD
- 46 STORM SEWER PROFILE - MAIN LINE (MEDIAN)
- 47 STORM SEWER PROFILES - MAIN LINE (EAST & WEST SIDES)
- 48 STORM SEWER SCHEDULE
- 49 - 61 CROSS SECTIONS - MAIN LINE
- 62 - 64 CROSS SECTIONS - RAMP "A" OF NORTHWEST HIGHWAY INTERCHANGE
- 65 - 68 CROSS SECTIONS - RAMP "B" OF NORTHWEST HIGHWAY INTERCHANGE
- 69 - 72 CROSS SECTIONS - RAMP "C" OF NORTHWEST HIGHWAY INTERCHANGE
- 73 - 75 CROSS SECTIONS - RAMP "D" OF NORTHWEST HIGHWAY INTERCHANGE
- 76 KEY TO CROSS SECTIONS - NORTHWEST HIGHWAY INTERCHANGE
- 77 - 82 CROSS SECTIONS - NORTHWEST HIGHWAY

### SHEET NO.

- 83 - 85 CROSS SECTIONS - ROHLWING ROAD
- 86 DETAIL OF CONTINUOUSLY REINFORCED PAVEMENT - REINFORCEMENT
- 87 DETAIL OF CONTINUOUSLY REINFORCED PAVEMENT - END ANCHORAGE
- 88 - 89 DETAIL OF 10' x 12' BOX CULVERT UNDER NORTHWEST HIGHWAY - STATION 120+42
- 90 DETAIL OF 10' x 12' BOX CULVERT UNDER NORTHWEST HIGHWAY - STATION 110+00
- 91 DETAIL OF 10' x 12' BOX CULVERT UNDER MAIN LINE - STATION 287+00
- 92 DETAIL OF 8' x 12' BOX CULVERT UNDER RAMPS "A" AND "B"; DETAIL OF SPECIAL BRIDGE APPROACH (SOUTH SIDE)
- 93 DETAIL OF BOX CULVERT CONNECTIONS TO EXISTING RAILROAD CULVERTS
- 94 DETAIL OF RAILROAD CROSSING PAVEMENT AT ROHLWING ROAD
- 95 DETAIL OF PAVED DITCH - EAST SIDE OF NORTHWEST HIGHWAY INTERCHANGE
- 96 DETAIL OF SPECIAL BRIDGE APPROACH SLABS (NORTH SIDE); DETAIL OF GUARD RAIL SUPPORT AND END ANCHORAGE
- 97 DETAIL OF ASPHALT DRIVEWAY RETURN; DETAIL OF P.C. CONCRETE DRIVEWAY RETURN
- 98 DETAIL OF STABILIZED SHOULDERS; DETAIL OF BARRIER MEDIAN & TRAFFIC ISLAND; DETAIL OF SHOULDER TRANSITION ON RAMPS; DETAIL OF PAVEMENT FABRIC, SPECIAL
- 99 DETAIL OF ADJUSTMENT OF DRAINAGE STRUCTURES IN NEW PAVEMENT; DETAIL OF TYPE 37 GRATE; DETAIL OF CURB & PAVEMENT CONSTRUCTION ADJACENT TO TYPE 5 FRAME
- 100 DETAIL OF P.C. CONCRETE ALLEY RETURN; DETAIL OF VERTICAL LIMITS OF TRENCH BACKFILL; DETAIL OF CURB & GUTTER ABUTTING EXISTING PAVEMENT; DETAIL OF STORM SEWER CONNECTION TO SEWERS
- 101 DETAIL OF PERMANENT BARRICADES; DETAIL OF CORRUGATED WARNING STRIP ON EXISTING PAVEMENT
- 102 DETAIL OF EXPANSION BOLTS (SPECIAL); DETAIL OF TYPE A MANHOLE (MODIFIED); DETAIL OF DEMOLITION SIGN; DETAIL OF STEEL PLATE BEAM GUARD RAIL (SPECIAL)
- 103 STANDARD 2138-2 (BRIDGE APPROACHES)
- 104 STANDARD 2122-1 (CONCRETE MEDIANS); STANDARD 2130 (COMB. CONC. CURB & GUTTER)
- 105 STANDARD 1514-2 (CATCH BASINS); STANDARD 1527-2 (TYPE A MANHOLE); STANDARD 1538-2 (TYPE C CATCH BASIN)
- 106 STANDARD 1516-S (FRAMES & GRATES); STANDARD 1686-2 (SYMBOLS)
- 107 STANDARD 1636-3 (RAILROAD CROSSING PAVEMENT); STANDARD 2115-1 (PAVEMENT FABRIC); STANDARD 2179 (24" P.C.C. PAVEMENT); STANDARD 2185 (ROADWAY FOR 24" PAVEMENT)
- 108 STANDARD 1971-3 (CONSTRUCTION SIGN); STANDARD 1972-1 (ROAD BARRICADE); STANDARD 2114 (FLAGMAN SIGN); STANDARD 2158-2 (F.A. PRIMARY SIGN)
- 109 STANDARD 1977-4 (BARRICADES); STANDARD 1973 (HEADWALL)
- 110 STANDARD 1687-3 (STEEL PLATE BEAM GUARD RAIL); STANDARD 1766-3 (LONG. METAL JOINT)
- 111 STANDARD 2135 (PERMANENT SURVEY MARKERS)
- 111 A STANDARD 2203
- 111 B STANDARD 2168-1

Two (2) signs conforming to Standard 2158-2 shall be erected by the contractor for this Section at locations designated by the Engineer.

These signs shall not be removed or relocated without the approval of the Engineer.

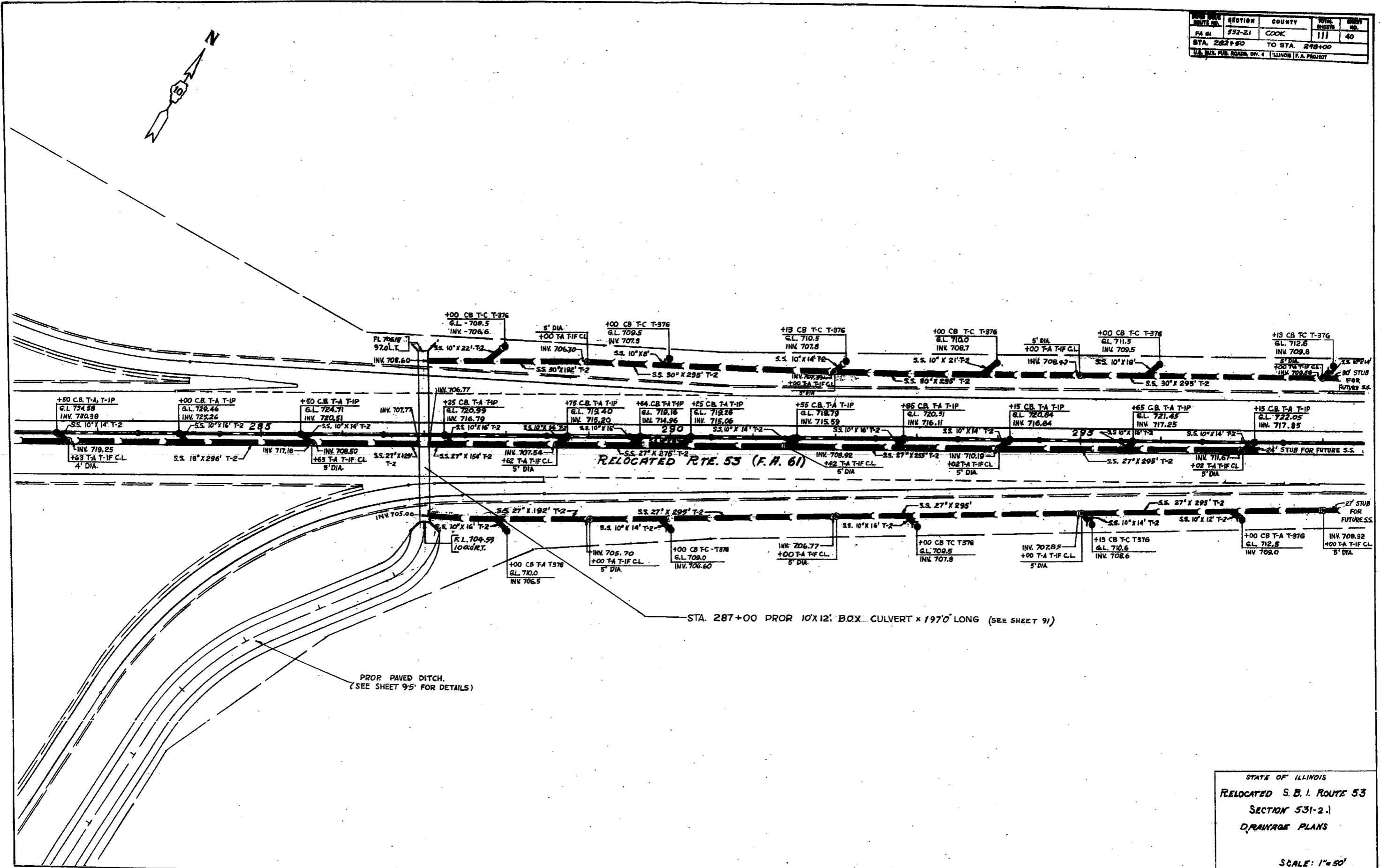
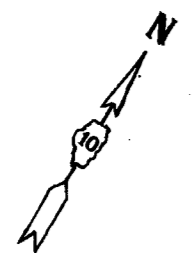
### HIGHWAY CLASSIFICATION

SBI Route 53	6425-M-70
SBI Route 19	2460-M-5C
(Northwest Highway)	
CH Route 9A	980-M-40
(Rohlwing Road)	

NOTE: THE "STANDARD SPECIFICATIONS FOR ROAD & BRIDGE CONSTRUCTION" ADOPTED JANUARY 2, 1958 AND THE "SUPPLEMENTAL SPECIFICATIONS" EFFECTIVE MARCH 2, 1964, SHALL GOVERN THE CONSTRUCTION OF THIS WORK

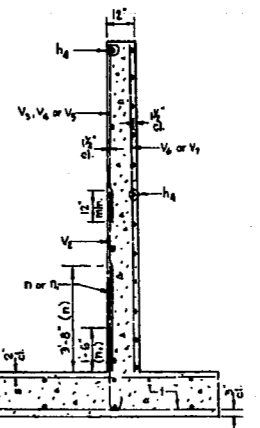
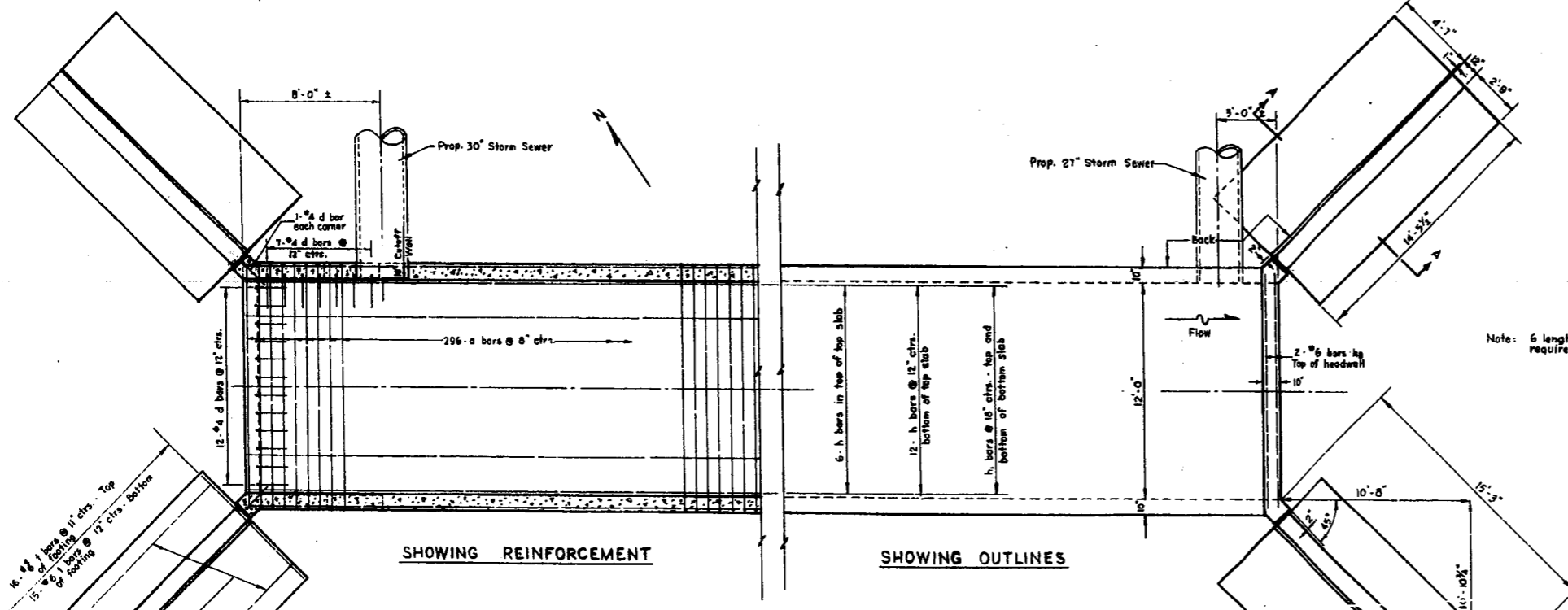
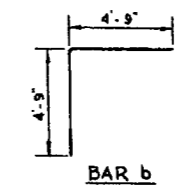
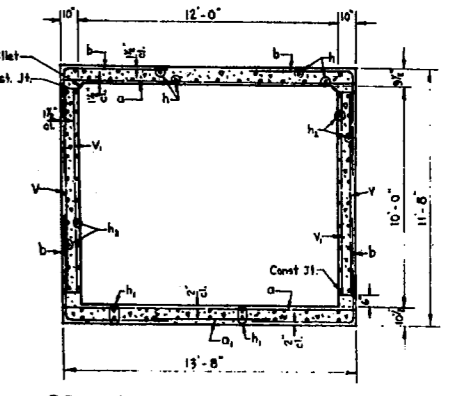
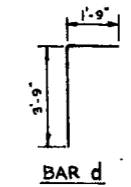
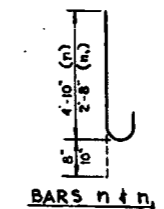
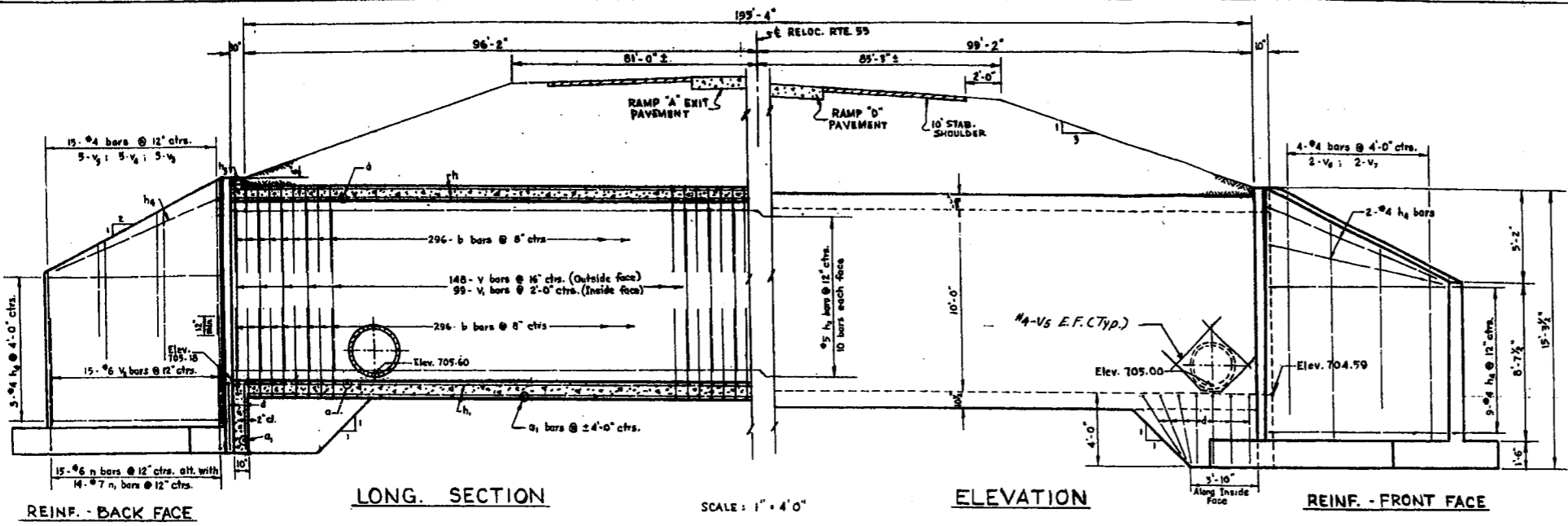
Z KOLBA

ROUTE NO.	SECTION	COUNTY	TOTAL SHEETS	SHEET NO.
53	531-21	COOK	111	40
STA. 282+50		TO STA. 298+00		
U.S. BUL. PUB. ROADS, DIV. 4 ILLINOIS P.A. PROJECT				



STATE OF ILLINOIS  
 RELOCATED S. B. 1. ROUTE 53  
 SECTION 531-21  
 DRAINAGE PLANS  
 SCALE: 1" = 50'

BOND ISSUE ROUTE NO.	SECTION	COUNTY	TOTAL SHEETS	SHEET NO.
FA 61	531-2.1	COOK	111	91
STA.	TO STA.			
U.S. BUR. PUB. ROADS, DIV. 4 ILLINOIS F.A. PROJECT				



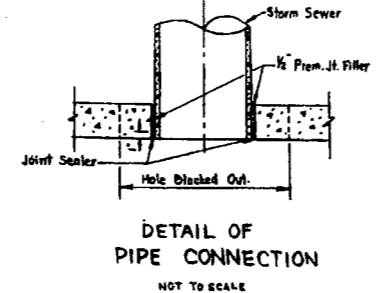
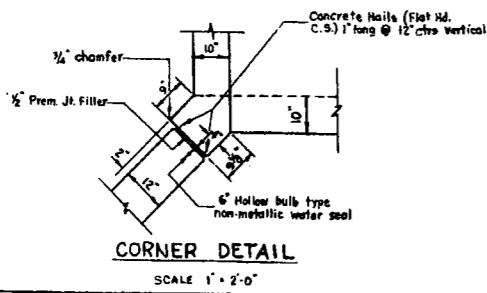
**BILL OF MATERIAL**

Bar	No.	Size	Length
a	592	#8	13'-4"
a1	52	#4	5'-6"
b	1184	#7	9'-6"
d	56	#4	5'-6"
h	108	#6	33'-10"
h1	108	#5	33'-8"
h2	240	#5	33'-8"
h3	4	#6	13'-0"
h4	60	#4	14'-2"
n	60	#4	5'-6"
n1	56	#7	3'-6"
t	124	#6	8'-1"
v	296	#7	9'-0"
v1	198	#5	9'-0"
v2	60	#6	6'-0"
v3	20	#4	8'-6"
v4	20	#4	6'-9"
v5	36	#4	5'-0"
v6	8	#4	11'-9"
v7	8	#4	8'-9"
w	32	#5	14'-2"
Class X Conc. Cu.Yd.			357.9
Reinf. Bars Lb.			79,970

**GENERAL NOTES**

CLASS X CONCRETE SHALL BE USED THROUGHOUT.  
 EXPOSED EDGES SHALL BE BEVELED 3/4".  
 FOR BACKFILLING AND EMBANKMENT SEE STANDARD SPECIFICATIONS.  
 ALL BARS SHALL BE LAPPED 20 DIAMETERS UNLESS OTHERWISE SPECIFIED.  
 THE TOP OF THE CULVERT, THE BACKS OF THE BIDEWALLS ABOVE THE LOWER CONSTRUCTION JOINT, AND THE BACKS OF THE WINGS ABOVE THE TOPS OF THE FOOTINGS SHALL BE WATERPROOFED IN ACCORDANCE WITH ARTICLE 51.21 OF THE STANDARD SPECIFICATIONS.  
 NON-METALLIC WATER SEAL USED IN THE WINGWALL JOINTS SHALL EXTEND FROM THE TOP OF THE FOOTING TO WITHIN 6" OF THE TOP OF THE HEADWALL.  
 ADDITIONAL STORM SEWERS SHALL CONNECT TO THE CULVERT NEAR THE CENTERLINE OF RELOCATED ROUTE 53 (SEE SHEETS 40 & 46 OF THE PLANS).

**DETAIL OF  
 10'x12' BOX CULVERT  
 UNDER MAIN LINE  
 STA. 287+00  
 RELOC. S.B.I. RTE.53 SEC. 531-2.1  
 SCALE AS SHOWN**



FS - 20,000 PSI  
 FC - 1400 PSI BARREL  
 FC - 1000 PSI WINGS  
 VC - 90 PSI BARREL  
 VC - 75 PSI FOOTING  
 N = 10  
**LOADING H2O - S16**

Revised 4-C-64 J.M.J. changed quant. of Rein. bars from 73912 to 73970\*