

FOR INDEX OF SHEETS, SEE SHEET NO. 2

1. IL. RTE. 53 (N.B.) OVER U.S. RTE. 14 & C.N.W. R.R. SN-016-0374
INCLUDES ONE 7 SPAN CONTINUOUS R.C. SLAB STRUCTURE WITH STEEL GIRDERS ON CONCRETE PIERS AND ABUTMENTS AT STA. 269+54.56 SPANS AT 64'-5 1/2", 82'-6", 65'-2 1/2", 79'-8", 82'-10", AND 61'-5"
2. IL. RTE. 53 (S.B.) OVER U.S. RTE. 14 & C.N.W. R.R. SN-016-1119
INCLUDES ONE 7 SPAN CONTINUOUS R.C. SLAB STRUCTURE WITH STEEL GIRDERS ON CONCRETE PIERS AND ABUTMENTS AT STA. 269+54.56 SPANS AT 64'-5 1/2", 82'-6", 65'-2 1/2", 79'-8", 82'-10", AND 61'-5"
3. IL. RTE. 53 (N.B.) OVER PALATINE RD. SN-016-0373
INCLUDES ONE 4 SPAN CONTINUOUS R.C. SLAB STRUCTURE WITH STEEL GIRDERS ON CONCRETE PIERS AND ABUTMENTS AT STA. 329+18.98 2 SPANS AT 60'-9" AND 2 AT 39'-3"
4. IL. RTE. 53 (S.B.) OVER PALATINE RD. SN-016-0970
INCLUDES ONE 4 SPAN CONTINUOUS R.C. SLAB STRUCTURE WITH STEEL GIRDERS ON CONCRETE PIERS AND ABUTMENTS AT STA. 329+18.98 2 SPANS AT 60'-9" AND 2 AT 39'-3"
5. IL. RTE. 53 OVER ANDERSON DRIVE SN-016-0372
INCLUDES ONE 52'-2" SPAN CONTINUOUS R.C. SLAB STRUCTURE WITH PRESTRESSED CONCRETE BEAMS ON CONCRETE ABUTMENTS AT STA. 351+81.46

STATE OF ILLINOIS
DEPARTMENT OF TRANSPORTATION

DIVISION OF HIGHWAYS
PLANS FOR PROPOSED
FEDERAL AID HIGHWAY

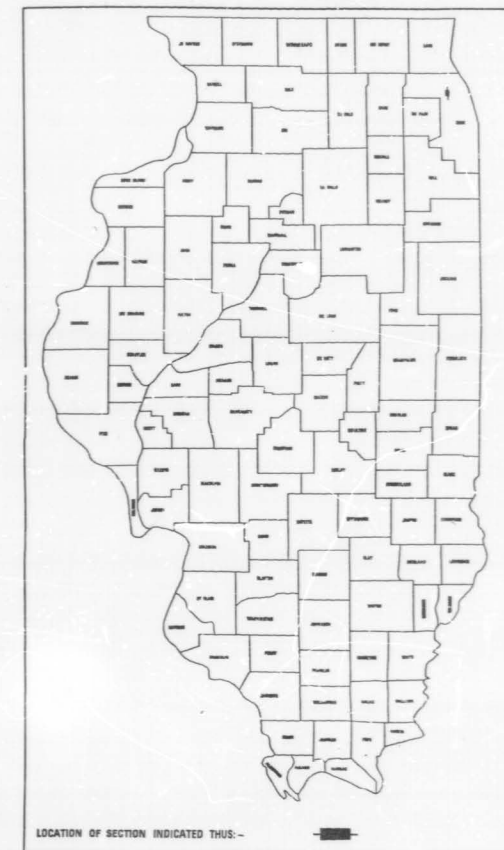
SCALES
PLAN
PROFILE HORIZ.
PROFILE VERT.
CROSS SECTIONS

F.A.P. 342 (IL. RTE. 53)
SECTION 531(2.1,3,3.1)RS-1(89) & 1990-116BR
U.S. RTE. 14 TO U.S. RTE. 12
RESURFACING AND BRIDGE DECK REHABILITATION
COOK COUNTY
C-91-475-89

FAP RTE	SECTION	COUNTY	TOTAL SHEETS	SHEET NO.
342	+	COOK	211	1

531(2.1,3,3.1)RS-1(89) & 1990-116BR

D-91-475-89



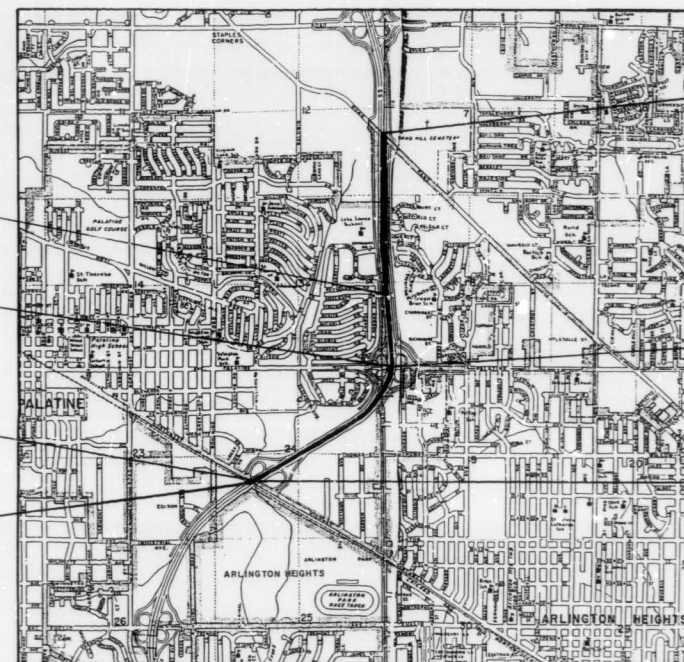
DESIGN DESIGNATION
9630(10) TRUNK 5.5(B-20)

STATE OF ILLINOIS
DEPARTMENT OF TRANSPORTATION
DIVISION OF HIGHWAYS

SUBMITTED: *[Signature]* 19 91
EXAMINED: *[Signature]* 19 91
PASSED: *[Signature]* 19 91
APPROVED: *[Signature]* 19 91

PRINTED BY AUTHORITY OF THE
STATE OF ILLINOIS

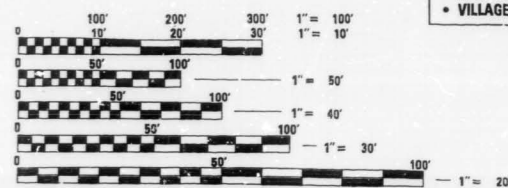
FOR J.U.L.I.E. INFORMATION CALL 1-800-892-0123



END OF IMPROVEMENT
STA. 399 + 45

BEGINNING OF IMPROVEMENT
STA. 267 + 02

PROJECT LOCATED IN:
• VILLAGE OF ARLINGTON HEIGHTS
• VILLAGE OF PALATINE

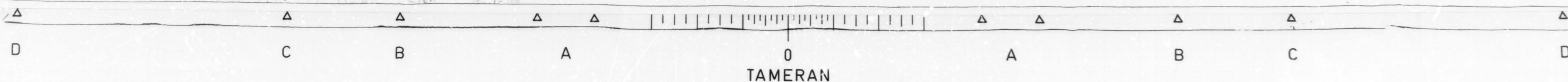


FULL SIZE PLANS HAVE BEEN PREPARED USING STANDARD ENGINEERING SCALES, REDUCED SIZED PLANS WILL NOT CONFORM TO STANDARD SCALES, IN MAKING MEASUREMENTS, ON REDUCED PLANS, THE ABOVE SCALES MAY BE USED.

CONTRACT NO. 80604

NET LENGTH OF IMPROVEMENT = 13,243 LIN. FT. = 2.508 MI.
GROSS LENGTH OF IMPROVEMENT = 13,243 LIN. FT. = 2.508 MI.

PLAN PREPARATION ENGINEER
L. SORENSON/M. DE YONG, (708) 705-4432



FRA NO.	SECTION	COUNTY	TOTAL SHEETS	SHEET NO.
342	*	COOK	211	2
STA.		TO ST.		
FED. ROAD DIST. NO. 1		ILLINOIS	FED. AID PROJECT	

* 531(2, 3, 3.1) RS-1(89) 1/1990-11682

INDEX OF SHEETS

LIST OF STATE STANDARDS

SHEET NO.	DESCRIPTION	STANDARD #	DESCRIPTION
1	TITLE SHEET	2149-11	DELINEATORS
2	INDEX OF SHEETS, STATE STANDARDS AND PLAN NOTES	2213-4	FRAME AND LIDS, TYPE 1
3-7	SUMMARY OF QUANTITIES	2225-3	REINFORCEMENT FOR CONTINUOUSLY REINFORCED P.C.C. PAVEMENT
8-11	TYPICAL CROSS SECTIONS	2228-4	METAL END SECTION FOR PIPE CULVERTS
12-21	PLAN - MAINLINE	2230-16	STEEL PLATE BEAM GUARDRAIL
22-33	PLAN - RAMP	2233-12	36' CONTINUOUSLY REINFORCED P.C.C. PAVEMENT
34-37	BARRIER WALL DETAILS	2237-11	B.A.M. SHOULDER DETAILS - ADJACENT TO RIGID PAVEMENT
38-42	BARRIER WALL PROFILE	2298-8	TYPICAL APPLICATION OF TRAFFIC CONTROL DEVICES
43-52	DRAINAGE AND UTILITIES - MAINLINE	2299-11	DESIGN OF TRAFFIC CONTROL DEVICES
53-58	DRAINAGE AND UTILITIES - RAMP	2300-3	FLAGMAN TRAFFIC CONTROL SIGN
59-60	CATCH BASIN 4x3 AND 4x8	2307-6	TYPICAL APPLICATION OF TRAFFIC CONTROL DEVICES SHORT-TIME OPERATION, DAY OR NIGHT
61-64	TYPICAL CROSS SECTIONS - STAGING	2308-5	TYPICAL APPLICATION OF TRAFFIC CONTROL DEVICES RURAL, DAY OR NIGHT, MOVING OPERATIONS
65-73	SUGGESTED STAGES OF CONSTRUCTION	2314-5	TYPICAL APPLICATION OF TRAFFIC CONTROL DEVICES MULTILANE DIV. AND UNDIV., RURAL, DAY OR NIGHT
74	TEMPORARY INFORMATION SIGNING - FOR STAGING	2316-12	TYPICAL APPLICATION OF TRAFFIC CONTROL DEVICES MULTILANE DIV. AND UNDIV., RURAL, OVER ONE DAY
75	TEMPORARY CONCRETE BARRIER WITH IMPACT ATTENUATOR	2323-11	PAVEMENT JOINTS
76-78	LANE CLOSURES - FREEWAY STANDARDS	2324-7	BRIDGE APPROACH SHOULDER PAVEMENT
79	RAMP CLOSURES - DETAIL	2326-3	TRAFFIC BARRIER TERMINAL, TYPE 10
80	TEMPORARY PAVEMENT MARKING - LETTERS AND SYMBOLS	2327-11	SUB-SURFACE DRAINS
81	TRAFFIC CONTROL - SIDEROADS, INTERSECTIONS, AND DRIVEWAYS	2333-3	CONCRETE BARRIER
82-85	TEMPORARY INFORMATION SIGNING - SIGN TRUSS REMOVAL	2336-4	TRAFFIC BARRIER TERMINAL, TYPE 1 AND 1A
100-120	SIGN TRUSS PLAN AND DETAILS	2337-2	TRAFFIC BARRIER TERMINAL, TYPE 2
121-123	ELECTRICAL PLAN AND DETAILS	2338-2	TRAFFIC BARRIER TERMINAL, TYPE 3 & 3A
124-145	SURVIELLANCE	2340-4	TRAFFIC BARRIER TERMINAL, TYPE 5 & 5A
146	LUG SYSTEM DETAIL	2341-3	TRAFFIC BARRIER TERMINAL, TYPE 6
147-150	APPROACH SLAB DETAILS	2360-4	BRIDGE APPROACH PAVEMENT (50 FT.)
151	BRIDGE APPROACH SHOULDER PAVEMENT	2362-3	CONCRETE HEADWALL FOR PIPE DRAINS
152-159	BRIDGE PLANS - U.S. ROUTE 14 & CNW RR (NB)	2381	TEMPORARY EROSION CONTROL SYSTEMS
160-167	BRIDGE PLANS - U.S. ROUTE 14 & CNW RR (SB)	2383-1	TEMPORARY CONCRETE BARRIER
168-173	BRIDGE PLANS - PALATINE ROAD (NB)	2385	FRAME AND GRATE, TYPE 20
174-179	BRIDGE PLANS - PALATINE ROAD (SB)	2386	FRAME AND GRATE, TYPE 21
180-187	BRIDGE PLANS - ANDERSON DRIVE	2409-1	TYPICAL APPLICATION OF TRAFFIC CONTROL DEVICES TWO LANE, TWO-WAY, RURAL, ONE-LANE CLOSURE ON BRIDGE DECK, DAY OR NIGHT OPERATIONS
188	NEOPRENE JOINT DETAIL	2425-1	CLASS A PATCHES
189	RETROFIT CONCRETE PARAPET DETAIL	2427-1	CLASS C AND D PATCHES
190	BAR SPLICER DETAIL	U-2	TYPICAL APPLICATION OF TRAFFIC CONTROL DEVICES
191-192	CROSS SECTIONS - DITCH REGRADING	U-4	TYPICAL APPLICATION OF TRAFFIC CONTROL DEVICES
193-205	CROSS SECTIONS - CENTERLINE MEDIAN	2419	" " " " " " " "
206-211	DISTRICT DETAILS	Δ2429	P.C.C. SHOULDER DETAILS

PLAN NOTES

BEFORE STARTING ANY EXCAVATION, THE CONTRACTOR SHALL CALL "JULIE" AT 800-892-0123 OR "DIGGER" (CHICAGO UTILITY ALERT NETWORK), (312)774-7000 FOR FIELD LOCATIONS OF BURIED ELECTRIC, TELEPHONE AND GAS FACILITIES. (48 HOURS NOTIFICATION IS REQUIRED).

THE CONTRACTOR SHALL COORDINATE CONSTRUCTION ACTIVITIES WITH UTILITY COMPANIES AND THE CITY OF CHICAGO.

THE CONTRACTOR WILL NOT BE ALLOWED TO SET UP A YARD OR FIELD OFFICE ON STATE PROPERTY WITHOUT WRITTEN PERMISSION FROM THE DEPARTMENT.

THE REMOVAL OF GUARDRAIL TERMINAL SECTIONS SHALL BE INCLUDED IN THE UNIT PRICE PER LINEAL FOOT FOR STEEL PLATE BEAM GUARD RAIL REMOVAL.

BARRICADES: THE CONTRACTOR SHALL PROVIDE AND INSTALL TWO (2) WEIGHTED SAND BAGS ON EACH TYPE I OR TYPE II BARRICADE USED. (ONE (1) WEIGHTED SAND BAG ACROSS EACH BOTTOM RAIL).

WHEN ARTIFICIAL LIGHTING IS UTILIZED IN NIGHT OPERATIONS THE CONTRACTOR SHALL EXERCISE THE UTMOST PRECAUTIONS IN PREVENTING ADVERSE VISIBILITY TO THE MOTORING PUBLIC AND ADJOINING RESIDENTIAL AREAS.

REVISIONS	
NAME	DATE

ILLINOIS DEPARTMENT OF TRANSPORTATION
INDEX OF SHEETS,
STATE STANDARDS
AND
PLAN NOTES

SCALE: VERT. _____
HORIZ. _____

DATE _____ DRAWN BY _____
CHECKED BY *RV*

Δ Rev. 2-16-91



EXISTING BRIDGE DESCRIPTION

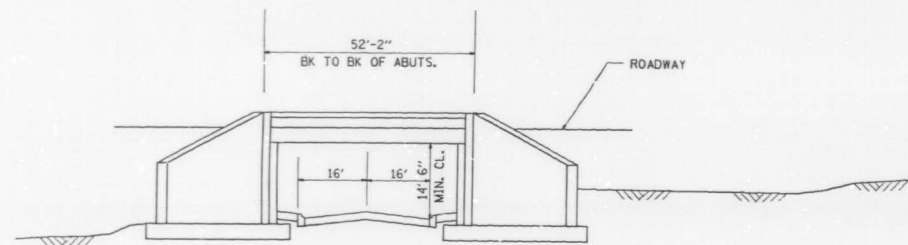
THE BRIDGE CONSISTS OF A SINGLE SPAN
 PRECAST, PRESTRESSED CONCRETE BEAM
 STRUCTURE WITH A 52'-2" SPAN ON
 CLOSED R.C. ABUTMENTS WITH 1/2"
 BITUMINOUS OVERLAY.

F.A.P. NO.	SECTION	COUNTY	TOTAL SHEETS	SHEET NO.
342	*	COOK	211	180
STA.	TO STA.			

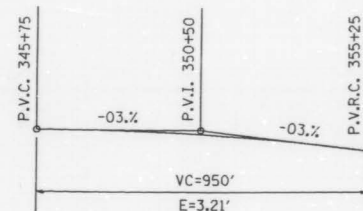
* 531 (2.1.3.3.1)RS-1(89) & 1990-116BR
 SHEET 1 OF 3

INDEX OF SHEETS

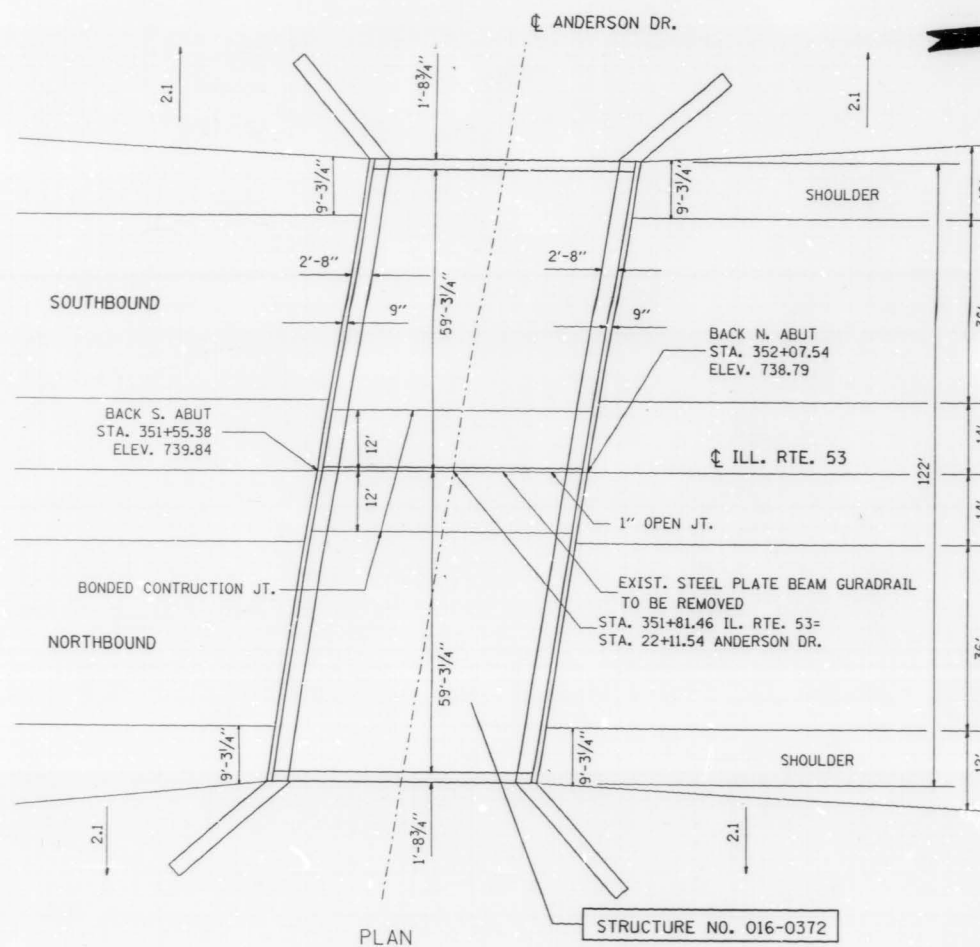
- 1 PLAN AND ELEVATION
- 2 GENERAL NOTES AND BILL OF MATERIALS
- 3 DECK DETAILS
- 4 DELAMTECT AND BOTTOM SURVEY
- 5 NORTH ABUTMENT JOINT RECONSTRUCTION
- 6 SOUTH ABUTMENT JOINT RECONSTRUCTION
- 7 LONGITUDINAL JOINT RECONSTRUCTION
- 8 STAGING DETAILS



ELEVATION

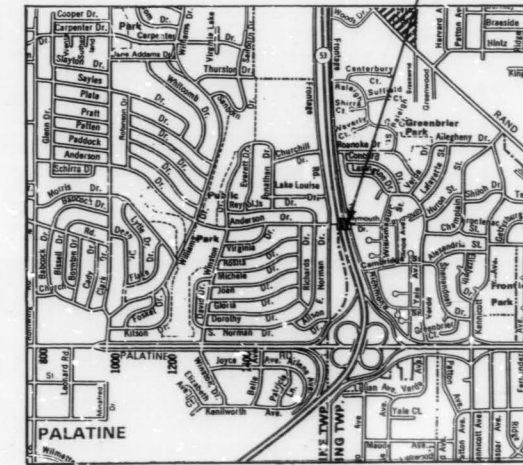


PROFILE IL. RTE. 53



PLAN

STRUCTURE NO. 016-0372
 NORTHBOUND & SOUTHBOUND



LOCATION MAP



REVISIONS	
NAME	DATE

ILLINOIS DEPARTMENT OF TRANSPORTATION
 ILL. RTE. 53 @ ANDERSON DR.
 BRIDGE REHABILITATION
 STRUCTURE NO. 016-0372
 PLAN & ELEVATION

SCALE: VERT. NONE
 HORIZ. DATE 10/23/90

DRAWN BY
 CHECKED BY

11-OCT-90 19:33:08 (CREATED)
 2F66110,040D1,47589F3,DDN1
 LEVELS = 35

VI-BR10



NOTES:

- The Zinc-silicate and vinyl paint system shall be used for shop and field painting of Structural Steel except where otherwise noted. The color of the vinyl finish coat shall be Munsell No. 7.5G 4/B.
- All structural steel shall be AASHTO M 222 except expansion joint plates and attached bars which shall be AASHTO M 183.
- Expansion joint plates and attached bars shall be shop painted with the zinc-silicate primer.
- AASHTO M 222 structural steel shall not be painted except, that for a distance of three times the depth of the beams or girders (but not exceeding 10 feet) each way from deck joints, the AASHTO M 222 structural steel shall be cleaned and given one coat of the zinc silicate primer and a dark maroon vinyl finish coat. The color of the finish coats shall be Munsell No. 2.5 YR 3/4 reddish brown. Both coats may be applied in the shop with spot painting only in the field.
- The structural steel bearing plates of the Elastomeric Bearing Assembly shall conform to the requirements of AASHTO M 223 Grade 50 (AASHTO M 222).
- Reinforcement bars shall conform to the requirements of AASHTO M-31, M-42 or M-53 Grade 60.
- Plan dimensions and details relative to existing structure have been taken from existing plans and are subject to nominal construction variations. It shall be the Contractor's responsibility to verify such dimensions and details in the field and make necessary approved adjustments prior to construction or ordering of materials. Such variations shall not be cause for additional compensation for a change in the scope of the work, however, the Contractor will be paid for the quantity actually furnished at the unit price bid for the work.
- All accessible end areas of steel beams, exposed top of steel beams, end diaphragms, and bearings designated by the Engineer for painting shall be cleaned by Method I. The three coat lead and chromate free alkyd paint system shall be applied over all cleaned areas, except the exposed top of steel beams to be embedded in concrete shall receive only one coat of the primer of this system. The color of the final finish coat shall be INTERSTATE GREEN. This work will be paid for in accordance with Article 109.04 of the Standard Specifications.

TOTAL BILL OF MATERIALS

ITEM	UNIT	TOTAL
BITUMINOUS CONCRETE REMOVAL (DECK)	SQ. YD.	668
CONCRETE BRIDGE DECK SCARIFICATION, 1/2"	SQ. YD.	668
DECK SLAB REPAIR (PARTIAL DEPTH)	SQ. YD.	25
DECK SLAB REPAIR (FULL DEPTH)	SQ. YD.	10
CONCRETE REMOVAL SPECIAL	CU. YD.	41.7
HANDRAIL REMOVAL	LIN. FT.	102
PREFORMED JOINT SEAL, 2 1/2"	LIN. FT.	173
REINFORCEMENT BARS, EPOXY COATED	POUND	4733
CLASS X CONCRETE SUPERSTRUCTURE	CU. YD.	46.7
MICROSILICIA CONCRETE BRIDGE DECK OVERLAY 2 1/2"	SQ. YD.	651
PROTECTIVE COAT	SQ. YD.	795
PROTECTIVE SHIELD	SQ. YD.	668
RETROFIT CONCRETE PARAPET	LIN. FT.	102
FURNISHING AND ERECTING STRUCTURAL STEEL	POUND	15956
HANDRAIL REMOVAL	LIN. FT.	102
SAWING P.C.C. PAVEMENT, 3/4"	LIN. FT.	524
SAWING P.C.C. PAVEMENT, 7"	LIN. FT.	50
PREFORMED JOINT SEAL, 1 3/4"	LIN. FT.	123

REVISIONS	
NAME	DATE

DEPARTMENT OF TRANSPORTATION

GENERAL NOTES AND BILL OF MATERIALS




DATE
CHECKED BY R. Y.

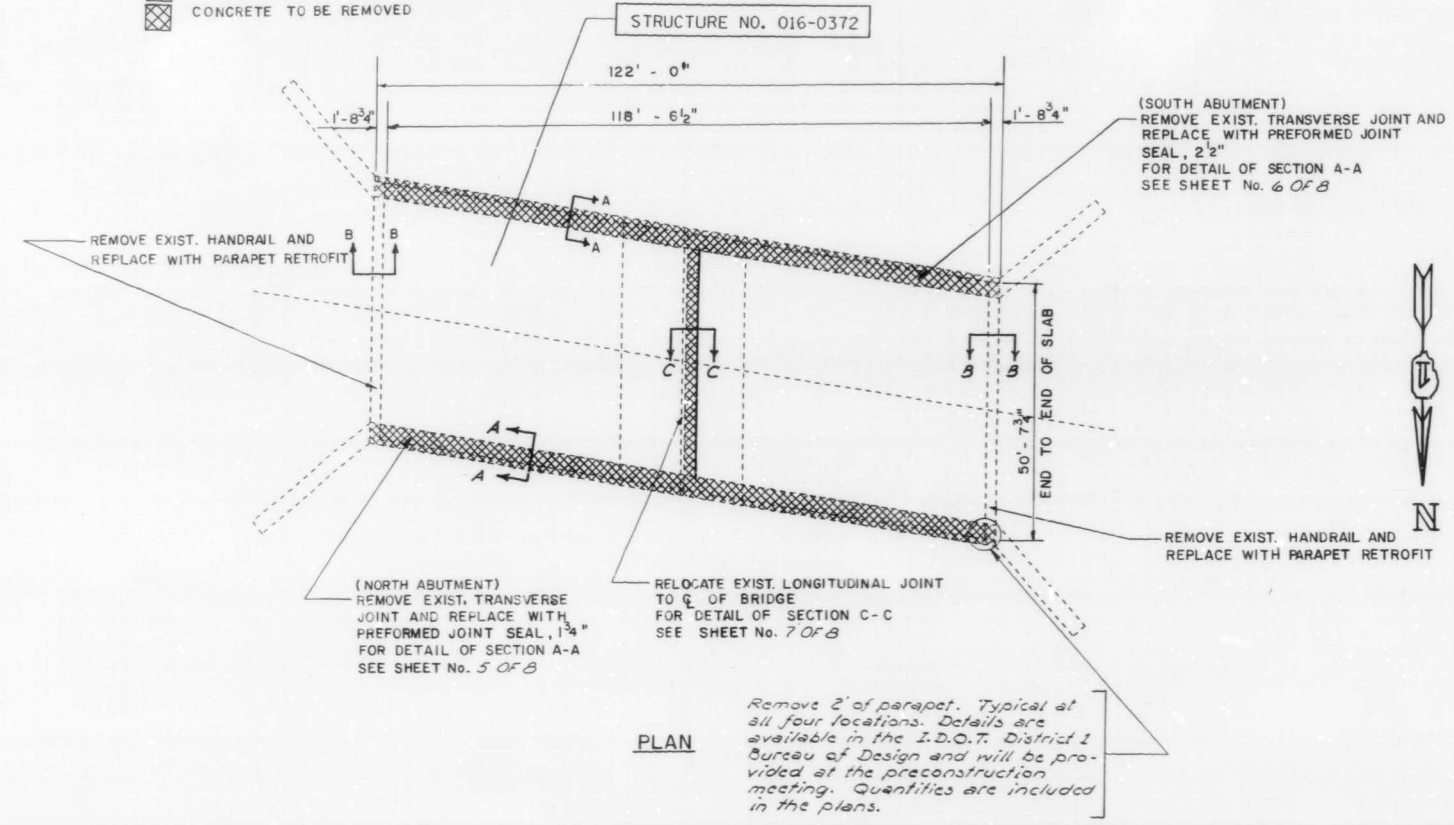


F. A. P. NO.	SECTION	COUNTY	TOTAL SHEETS	SHEET NO.
342	*	COOK	211	182
STA.	TO STA.			
FED. ROAD DIST. NO.	BLINDS	FED. AID PROJECT		

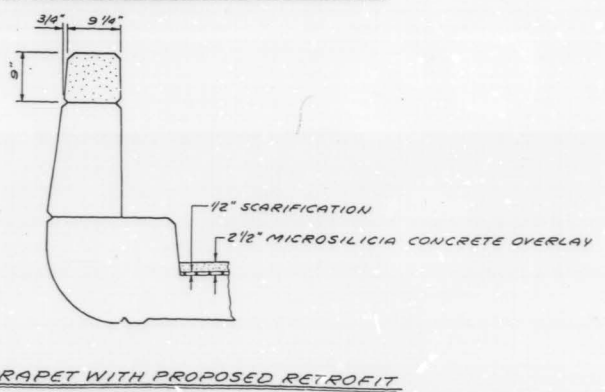
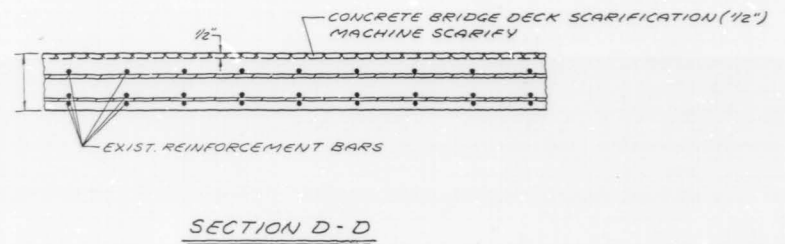
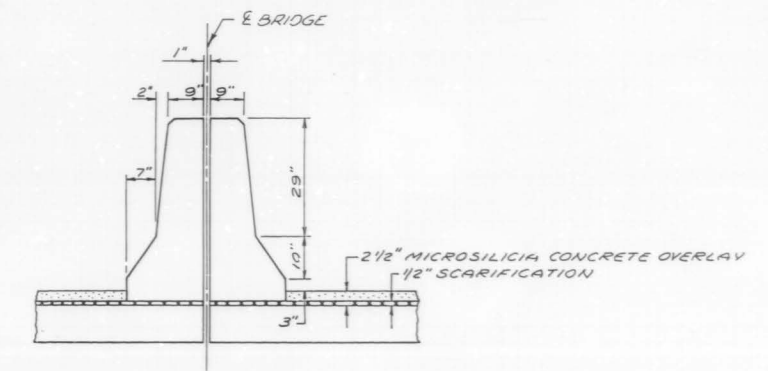
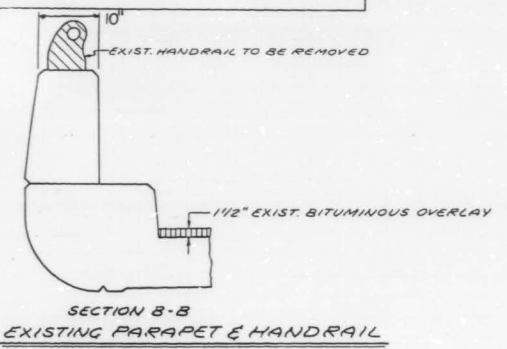
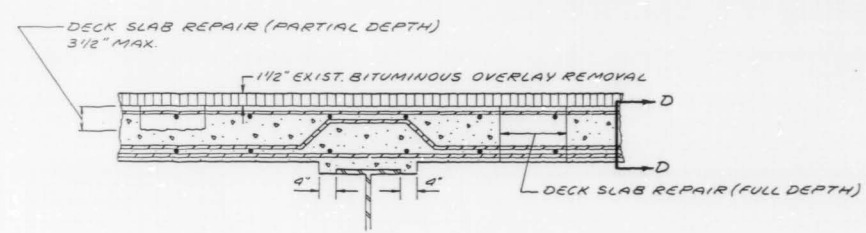
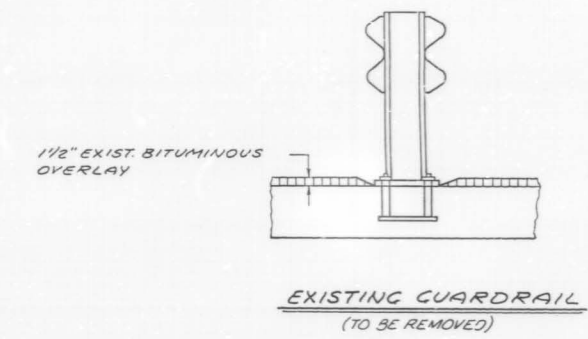
* 531 (2.1.3.3.1)RS-1089) & 1990-1.6BR
SHEET 3 OF 8

LEGEND

-  DECK SLAB REPAIR (PARTIAL DEPTH) SEE DELAMTEC SHEET No. 4 OF 8
-  DECK SLAB REPAIR (FULL DEPTH) SEE BOTTOM DECK SURVEY SHEET No. 4 OF 8
-  CONCRETE TO BE REMOVED



BILL OF MATERIALS		UNIT	QUANTITIES
ITEM			TOTAL
BITUMINOUS CONCRETE	REMOVAL (DECK)	SQ. YD.	668
CONCRETE BRIDGE DECK SCARIFICATION, 1/2"		SQ. YD.	668
DECK SLAB REPAIR (PARTIAL DEPTH)		SQ. YD.	25
DECK SLAB REPAIR (FULL DEPTH)		SQ. YD.	10
MICROSILICIA CONCRETE BRIDGE DECK OVERLAY, 2 1/2"		SQ. YD.	651
PROTECTIVE COAT		SQ. YD.	693
PROTECTIVE SHIELD		SQ. YD.	667
RETROFIT CONCRETE PARAPET		LIN. FT.	102
HANDRAIL REMOVAL		LIN. FT.	102



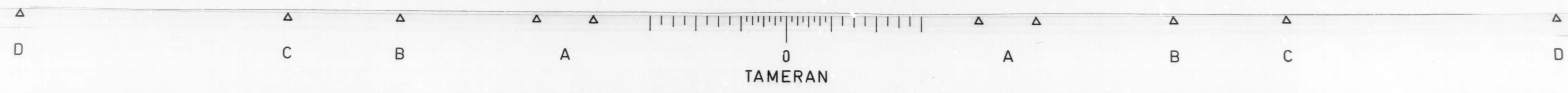
REVISIONS	
NAME	DATE

ILLINOIS DEPARTMENT OF TRANSPORTATION
ILL. RTE. 53 @ ANDERSON DR.
BRIDGE REHABILITATION
STRUCTURE NO. 016-0372
DECK DETAILS

SCALE: NO SCALE
DATE: 10/23/90

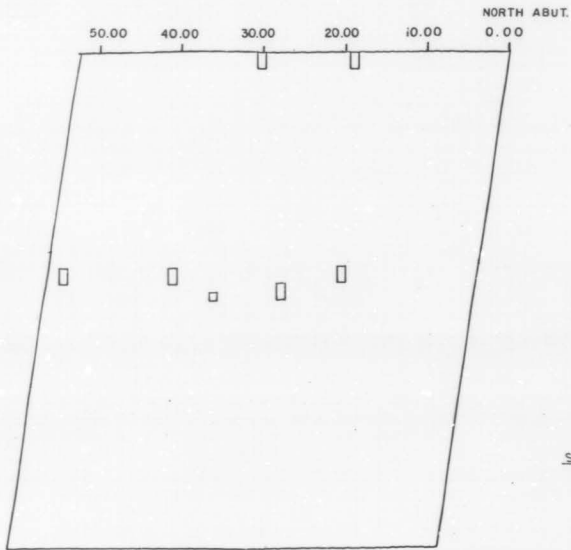
DRAWN BY: _____
CHECKED BY: _____

VI-BR20

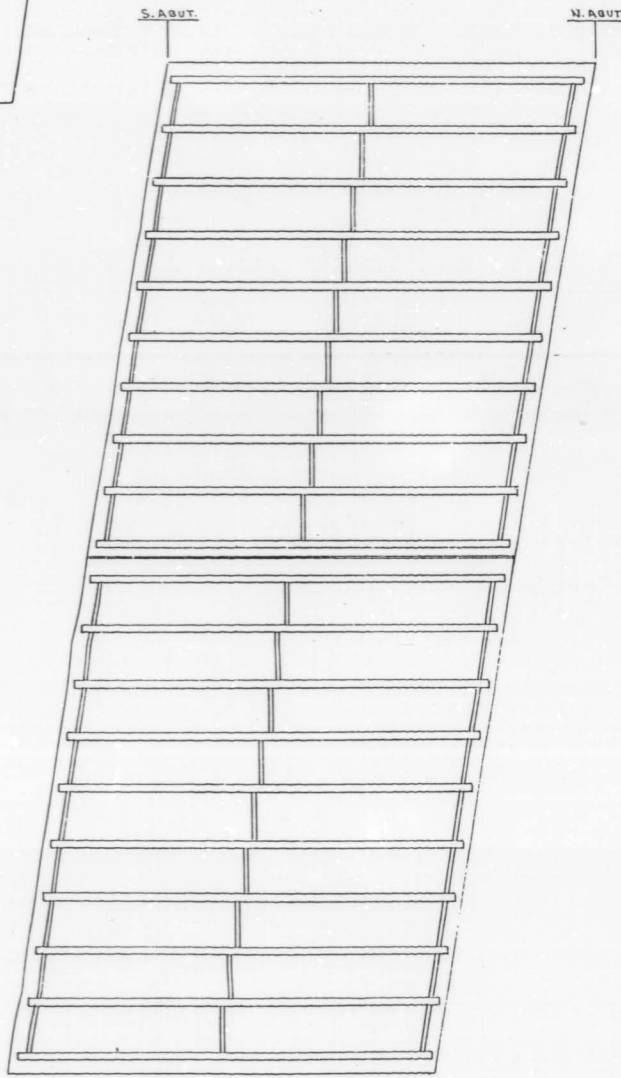


F&B	SECTION	COUNTY	TOTAL	SHEET
342	*	COOK	211	183
STA.		TO STA.		
FED. ROAD DIST. NO. 1		ALPHABET	FED. AID PROJECT	

531 (2,1,3,3.1) RS-(89) 41990-116-52
SHEE 4 OF 8

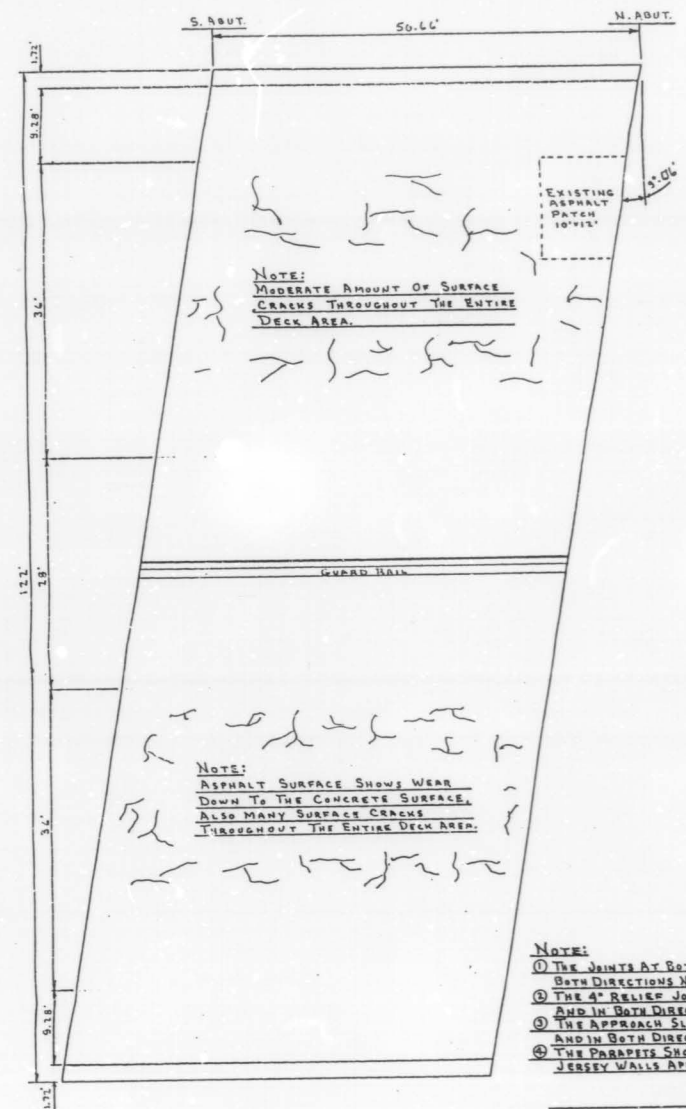


BRIDGE: 016 0372
 DATE: 5/31/90
 OPERATOR: MATECHICK SKEW 80-54
 COMMENTS: 53 NB/ANDERSON START @ N ABUT
 ROADWAY AREA: 65100 SY
 DELAMINATED AREA: 2500 SY
 % DELAMINATED: 3.8 %



BRIDGE-ILL 53/ANDERSON DR.
 BRIDGE No. 016-0372 "630
 BOTTOM DECK SURVEY
 FIELD DATA NM DATE 3/4/90
 DRAWN BY NM DATE 3/8/90

NOTE:
 No VISIBLE SPALLS OR CRACKS



NOTE:
 MODERATE AMOUNT OF SURFACE
 CRACKS THROUGHOUT THE ENTIRE
 DECK AREA.

NOTE:
 ASPHALT SURFACE SHOWS WEAR
 DOWN TO THE CONCRETE SURFACE.
 ALSO MANY SURFACE CRACKS
 THROUGHOUT THE ENTIRE DECK AREA.

- NOTE:
- ① THE JOINTS AT BOTH ABUTMENTS IN BOTH DIRECTIONS NEED REPAIRS = 150'
 - ② THE 4" RELIEF JOINTS AT BOTH ENDS AND IN BOTH DIRECTIONS NEED REPAIRS
 - ③ THE APPROACH SLABS AT BOTH ENDS AND IN BOTH DIRECTIONS HAVE SETTLED
 - ④ THE PARAPETS SHOULD BE UPDATED WITH JERSEY WALLS APPROX. 100 LIN. FT.

BRIDGE-ILL 53/ANDERSON DR.
 BRIDGE No. 016-0372 "630
 TOP DECK SURVEY
 FIELD DATA NM DATE 4/9/90
 DRAWN BY NM DATE 4/10/90

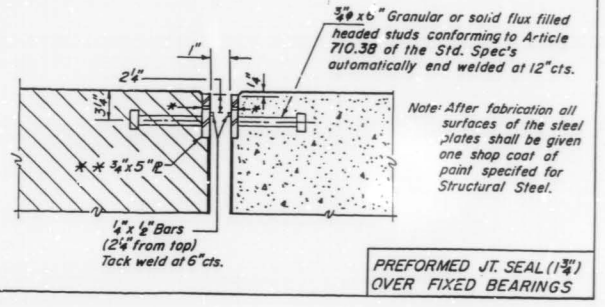
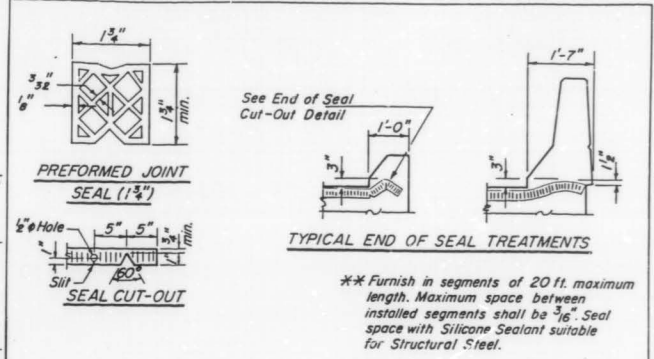
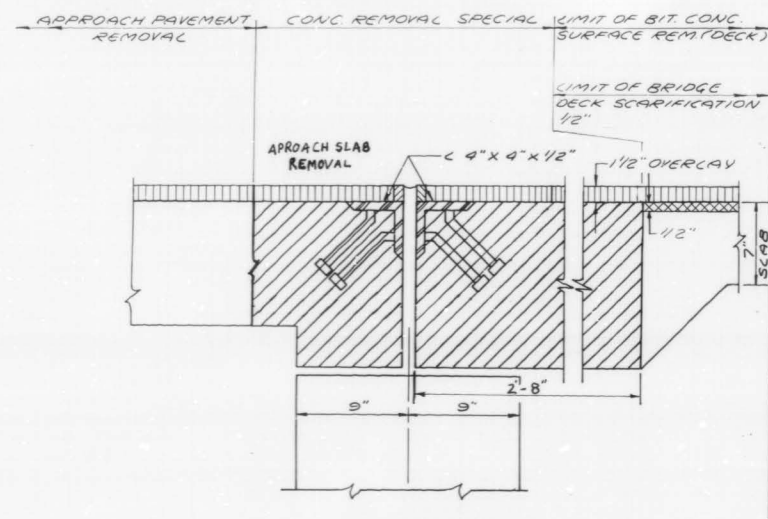
REVISIONS	
NAME	DATE

DEPARTMENT OF TRANSPORTATION
 ILL. RTE. 53 ANDERSON DR. N.E.
 BRIDGE REHABILITATION
 STRUCTURE NO. 0160372
 TOP DECK OF SURVEY & BOTTOM
 DECK SURVEY
 DATE
 CHECKED BY



NOTES: EXISTING REINFORCEMENT BARS IN THE REMOVAL AREAS SHALL BE CLEANED BEFORE PLACEMENT OF NEW CLASS X CONCRETE. (COST TO BE INCIDENTAL TO "CLASS X CONCRETE").
REMOVAL OF EXISTING STRUCTURAL STEEL SHALL BE INCIDENTAL TO "CONCRETE REMOVAL SPECIAL".
CONTRACTOR SHALL NOT DAMAGE EXISTING PRESTRESSED CONCRETE BEAMS AND CONCRETE DIAPHRAGMS DURING REMOVAL OPERATIONS.

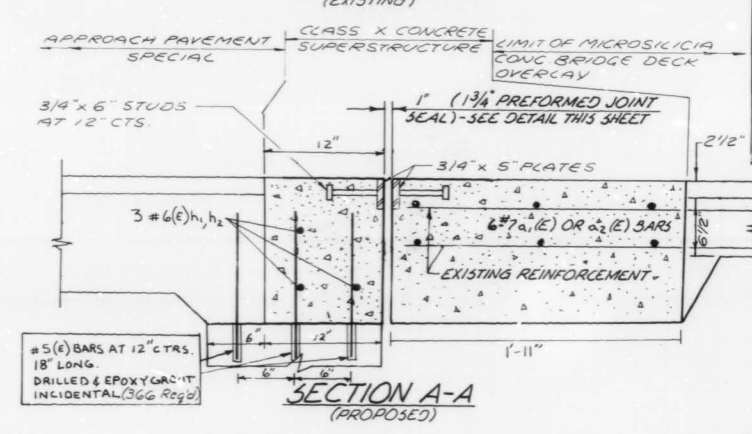
F.A.P. DIST.	SECTION	COUNTY	TOTAL SHEETS	SHEET NO.
342	*	COOK	211	184
STA.		TO STA.		
FED. ROAD DIST. NO. 7		ILLINOIS	FED. AID PROJECT	
* 531(2.1, 3, 3.1) RS-1(89) § 1990-116.5R				
SHEET 5 OF 8				



BAR LIST

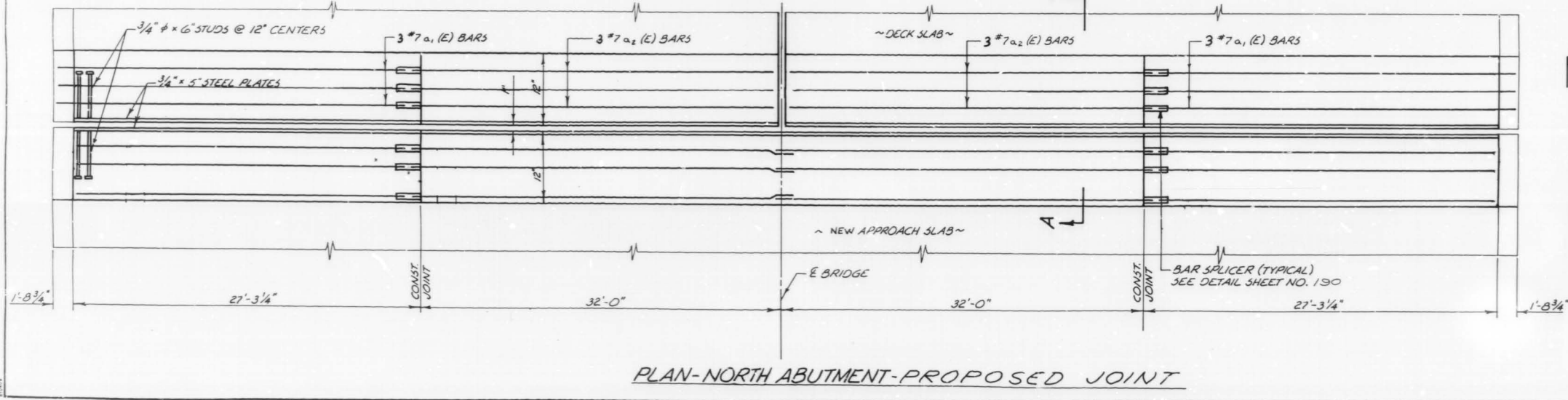
BAR NO.	SIZE	LENGTH	SHAPE
a ₁ (E)	#7	27'-1"	
a ₂ (E)	#7	33'-4"	
h ₁ (E)	#6	27'-1"	
h ₂ (E)	#6	32'-9"	

(E) DENOTES EPOXY COATED



BILL OF MATERIALS

ITEM	UNIT	QUANTITY
CONCRETE REMOVAL SPECIAL	CU. YD.	19.8
REINFORCEMENT BARS (EPOXY COATED)	POUND	2021
CLASS X CONCRETE SUPERSTRUCTURE	CU. YD.	16.0
SAWING P.C. CONCRETE PAVEMENT, 3/4"	LIN. FT.	237
FURNISHING AND ERECTING STRUCTURAL STEEL	POUND	9348
PREFORMED JOINT SEAL, 1 3/4"	LIN. FT.	123
PROTECTIVE COAT	SQ. YD.	26



REVISIONS

NAME	DATE

ILLINOIS DEPARTMENT OF TRANSPORTATION
12. RTE 53 @ ANDERSON RD.
STRUCTURE NUMBER 016-0372
NORTH ABUTMENT JOINT RECONSTRUCTION
SCALE NO SCALE DRAWN BY M.H.
DATE NOVEMBER, 1990 CHECKED BY R.V.



F.A.P. NO.	SECTION	COUNTY	TOTAL SHEETS	SHEET NO.
342	*	COOK	211	185
STA.	TO STA.		FED. ROAD DIST. NO. 7	
ILLINOIS		FED. AID PROJECT		

531 (2,1,3,3,1) RS-1 (89) § 1990-116 BR
 BAR LIST SHEET 6 OF 8

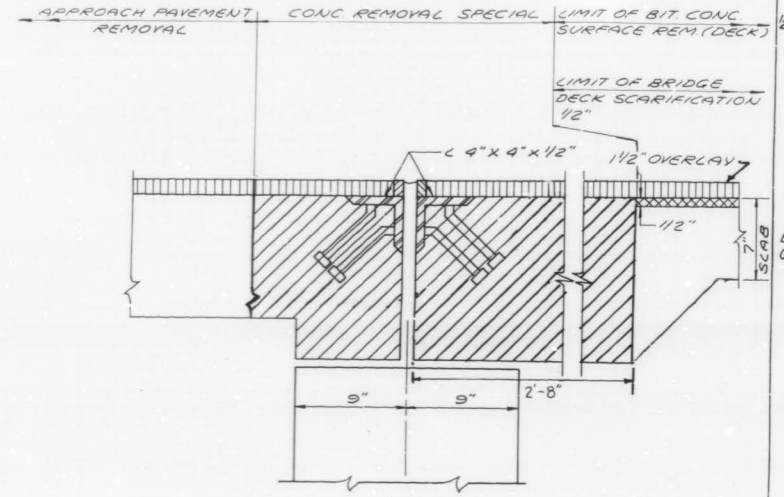
BAR NO.	NO.	SIZE	LENGTH	SHAPE
a ₁ (E)	12	#7	27'-1"	—
a ₂ (E)	12	#7	33'-4"	—
h ₁ (E)	6	#6	27'-1"	—
h ₂ (E)	6	#6	32'-9"	—

(E) DENOTES EPOXY COATED

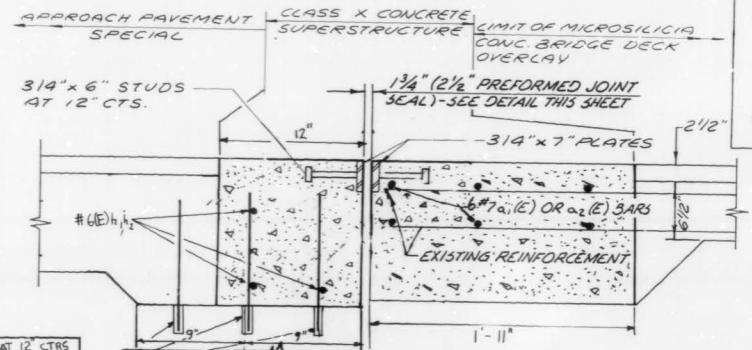
BILL OF MATERIALS

ITEM	UNIT	QUANTITY
CONCRETE REMOVAL SPECIAL	CU. YD.	19.8
REINFORCEMENT BARS (EPOXY COATED)	POUND	2021
CLASS X CONCRETE SUPERSTRUCTURE	CU. YD.	16.0
SAWING P.C. CONCRETE PAVEMENT, 3/4"	LIN. FT.	237
FURNISHING AND ERECTING STRUCTURAL STEEL	POUND	9348
PREFORMED JOINT SEAL, 2 1/2"	LIN. FT.	123
PROTECTIVE COAT	SQ. YD.	26

NOTES: EXISTING REINFORCEMENT BARS IN THE REMOVAL AREAS SHALL BE CLEANED BEFORE PLACEMENT OF NEW CLASS X CONCRETE. (COST TO BE INCIDENTAL TO "CLASS X CONCRETE").
 REMOVAL OF EXISTING STRUCTURAL STEEL SHALL BE INCIDENTAL TO "CONCRETE REMOVAL SPECIAL".
 CONTRACTOR SHALL NOT DAMAGE EXISTING PRESTRESSED CONCRETE BEAMS AND CONCRETE DIAPHRAGMS DURING REMOVAL OPERATIONS.

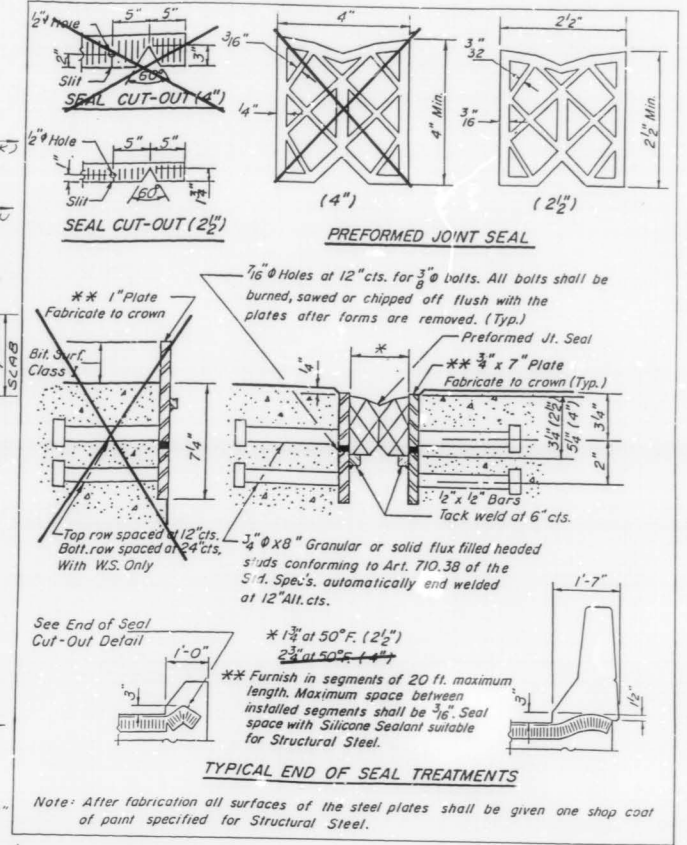


SECTION A-A (EXISTING)



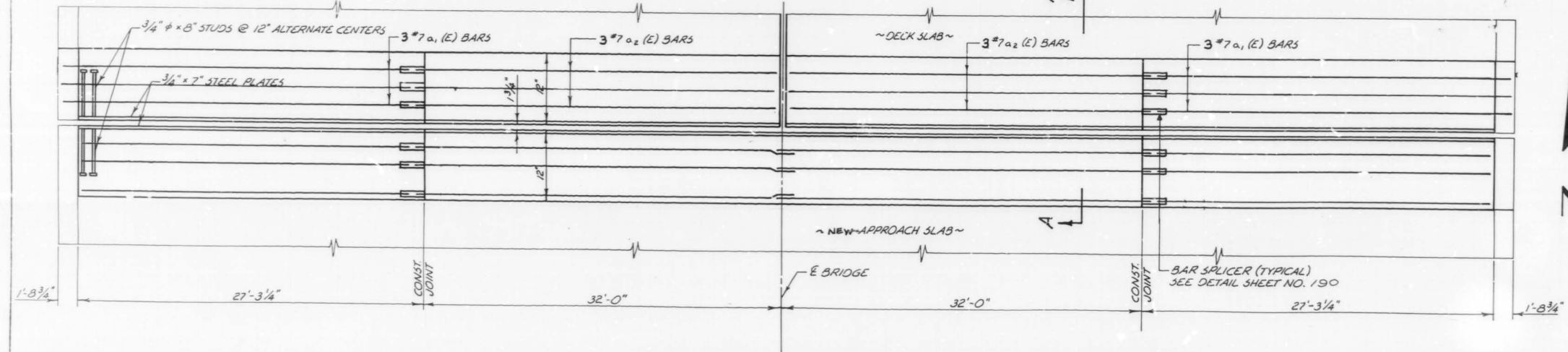
SECTION A-A (PROPOSED)

#5(E) BARS AT 12" CTRS 18" LONG. DRILLED & EPOXY GROUT INCIDENTAL (366 Reg'd)



TYPICAL END OF SEAL TREATMENTS

Note: After fabrication all surfaces of the steel plates shall be given one shop coat of paint specified for Structural Steel.

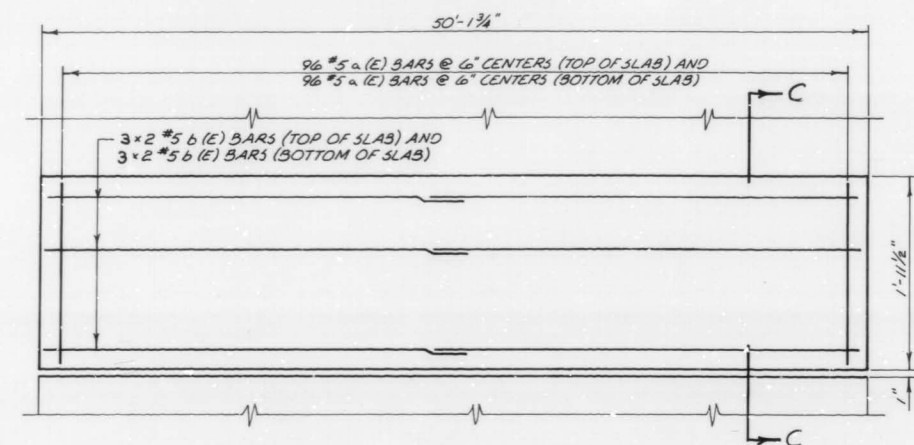


PLAN-SOUTH ABUTMENT - PROPOSED JOINT

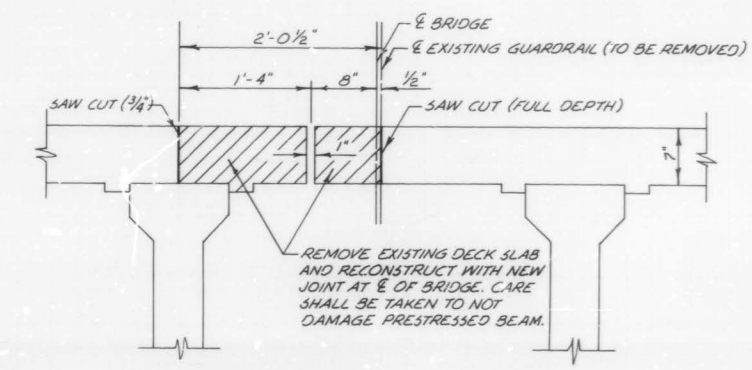
REVISIONS	
NAME	DATE

ILLINOIS DEPARTMENT OF TRANSPORTATION
 I.L. RTE 53 @ ANDERSON RD.
STRUCTURE NUMBER 016-0372
SOUTH ABUTMENT JOINT RECONSTRUCTION
 SCALE: VERT. NONE HORIZ. DATE NOVEMBER, 1990 DRAWN BY M.H. CHECKED BY R.V.

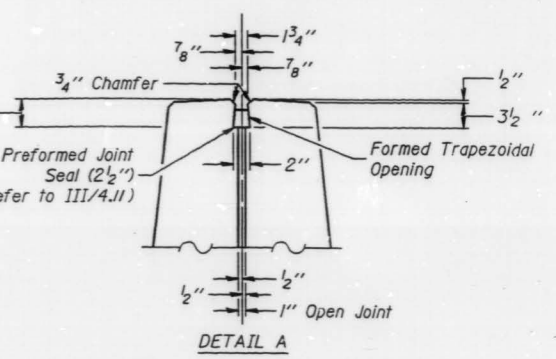
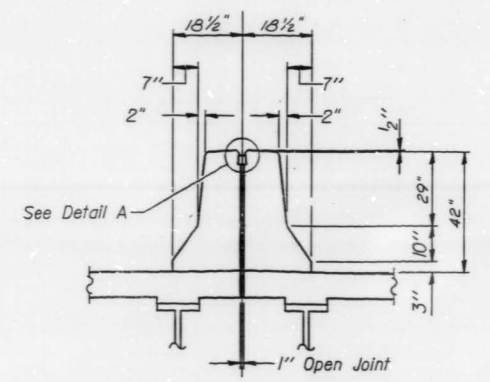




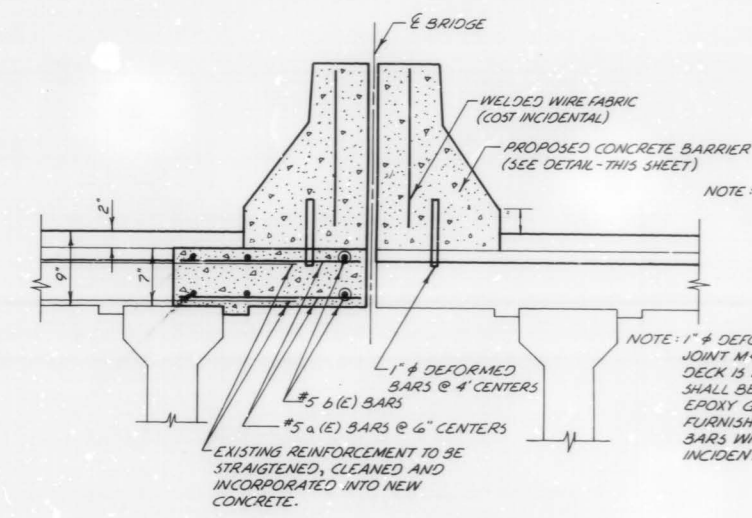
PLAN



SECTION C-C (EXISTING)



CONCRETE BARRIER DETAILS



SECTION C-C (PROPOSED)

BILL OF MATERIALS

ITEM	UNIT	QUANTITY
REINFORCEMENT BARS, EPOXY COATED	LSB	691
CONCRETE REMOVAL SPECIAL	C.Y.	2.1
CLASS X CONCRETE SUPERSTRUCTURE	C.Y.	15
SAWING P.C.C. PAVEMENT, 3/4"	L.F.	50
SAWING P.C.C. PAVEMENT, 2"	L.F.	50
PROTECTIVE COAT	S.Y.	50
PREFORMED JOINT SEAL, 2 1/2"	L.F.	50

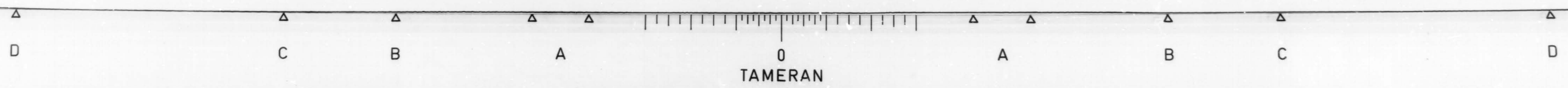
BAR LIST

BAR NUMBER	SIZE	LENGTH
a (E)	#5	1'-10"
b (E)	#5	25'-10"

(E) DENOTES EPOXY COATED

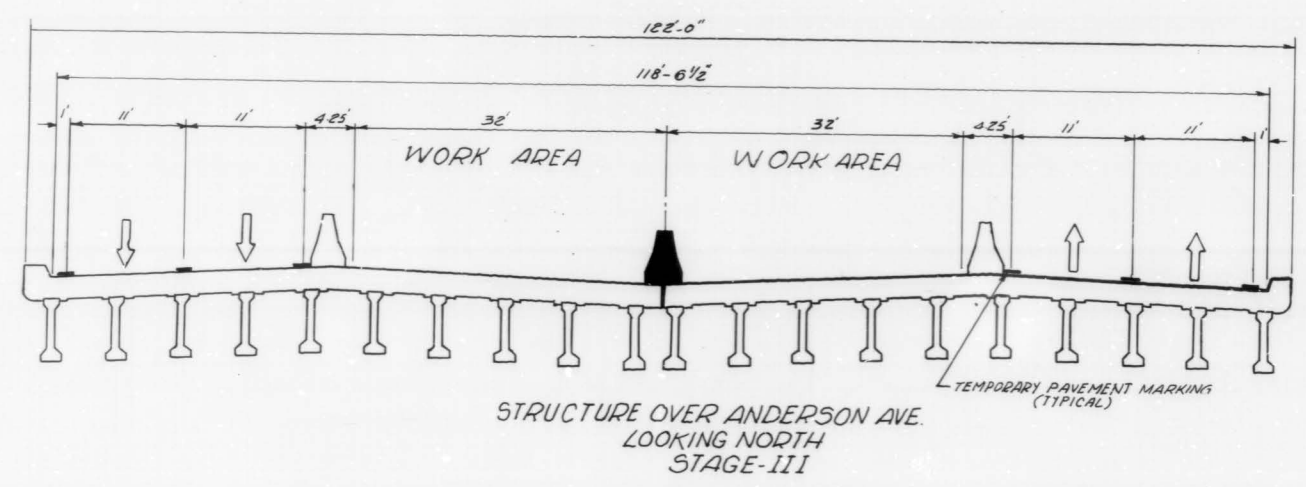
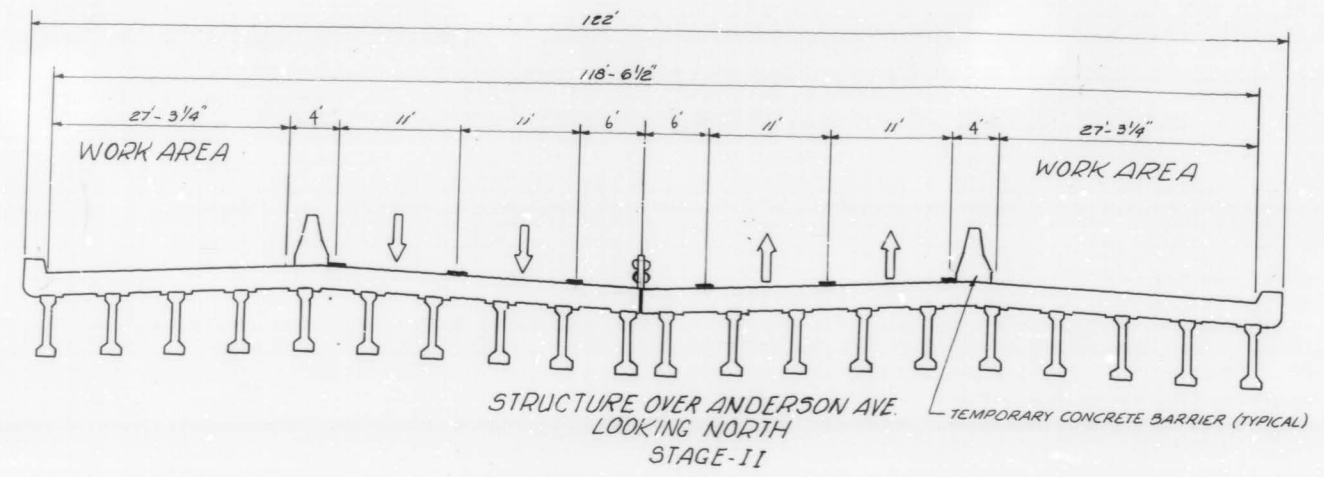
ILLINOIS DEPARTMENT OF TRANSPORTATION
 IL. RTE. 53 @ ANDERSON ROAD
 STRUCTURE NUMBER 716-0372
 LONGITUDINAL JOINT
 RECONSTRUCTION
 SCALE NO SCALE DRAWN BY M. H.
 DATE NOVEMBER, 1990 CHECKED BY R.Y.

REVISIONS	
NAME	DATE



PROJECT NO.	SECTION	COUNTY	TOTAL SHEETS	SHEET NO.
342	*	COOK	211	187
STA.	TO STA.		FED. AID PROJECT	

* 50 (2.1, 3, 3.1) RS-1(89) & 1990-116 BR
SHEET 3 OF 3



- STAGE II
- 1.) PLACE ALL TRAFFIC CONTROL AND REROUTE TRAFFIC TO **OUTSIDE** LANES
 - 2.) REMOVE EXISTING GUARDRAIL
 - 3.) REMOVE EXISTING BRIDGE DECK BITUMINOUS OVERLAY 1 1/2"
 - 4.) SCARIFY BRIDGE DECK SLAB 1/2"
 - 5.) REMOVE EXISTING, HANDRAIL AND REPLACE WITH A CONCRETE PARAPET RETROFIT
 - 6.) CONSTRUCT PARTIAL AND FULL DEPTH DECK SLAB REPAIRS
 - 7.) REMOVE EXISTING TRANSVERSE JOINTS
 - 8.) INSTALL PROPOSED PREFORMED JOINT SEAL OR NEOPRENE JOINTS
 - 9.) PLACE PROPOSED MICROSILICA BRIDGE DECK OVERLAY 2 1/2"
 - 10.) CONSTRUCT PROPOSED CONCRETE BARRIER WALL

- STAGE III
- 1.) RELOCATE ALL TRAFFIC CONTROL AND REROUTE TRAFFIC TO **INSIDE** LANES
 - 2.) REMOVE EXISTING GUARDRAIL
 - 3.) REMOVE EXISTING BRIDGE DECK BITUMINOUS OVERLAY 1 1/2"
 - 4.) SCARIFY BRIDGE DECK SLAB 1/2"
 - 5.) REMOVE EXISTING, HANDRAIL AND REPLACE WITH A CONCRETE PARAPET RETROFIT
 - 6.) CONSTRUCT PARTIAL AND FULL DEPTH DECK SLAB REPAIRS
 - 7.) REMOVE EXISTING TRANSVERSE JOINTS
 - 8.) INSTALL PROPOSED PREFORMED JOINT SEAL OR NEOPRENE JOINTS
 - 9.) PLACE PROPOSED MICROSILICA BRIDGE DECK OVERLAY 2 1/2"
 - 10.) CONSTRUCT PROPOSED CONCRETE BARRIER WALL

REVISIONS	
NAME	DATE

ILLINOIS DEPARTMENT OF TRANSPORTATION
ILLINOIS ROUTE - 53
(NORTHBOUND & SOUTHBOUND)
TYPICAL STAGING CROSS SECTION
STRUCTURE OVER ANDERSON AVE.
STRUCTURE NO. 016.037C

SCALE: NO SCALE
DRAWN BY: RGM
CHECKED BY: RY

