

FOR INDEX OF SHEETS, SEE SHEET NO. 2

1. ILL. RTE. 53 (N.B.) OVER ILL. RTE. 62 SN-016-0378
INCLUDES ONE 4 SPAN CONTINUOUS R.C. SLAB STRUCTURE WITH STEEL GIRDERS ON CONCRETE PIERS AND ABUTMENTS AT STA. 119+77.27
2 SPANS AT 41'-3", 1 AT 38'-2" AND 1 AT 36'-8".
2. ILL. RTE. 53 (S.B.) OVER ILL. RTE. 62 SN-016-2133
INCLUDES ONE 4 SPAN CONTINUOUS R.C. SLAB STRUCTURE WITH STEEL GIRDERS ON CONCRETE PIERS AND ABUTMENTS AT STA. 119+77.27
2 SPANS AT 41'-3", 1 AT 38'-2" AND 1 AT 36'-8".
3. ILL. RTE. 53 OVER SALT CREEK SN-016-0377
INCLUDES ONE 63'-3" SPAN CONTINUOUS R.C. SLAB STRUCTURE WITH PRESTRESSED CONCRETE BEAMS ON CONCRETE ABUTMENTS AT STA. 142+20
4. ILL. RTE. 53 (N.B.) OVER KIRCHHOFF RD. SN-016-0376
INCLUDES ONE 3 SPAN CONTINUOUS R.C. SLAB STRUCTURE WITH STEEL GIRDERS ON CONCRETE PIERS AND ABUTMENTS AT STA. 193+08.37
2 SPANS AT 42'-9" AND 1 AT 110'-3".
5. ILL. RTE. 53 (S.B.) OVER KIRCHHOFF RD. SN-016-1121
INCLUDES ONE 3 SPAN CONTINUOUS R.C. SLAB STRUCTURE WITH STEEL GIRDERS ON CONCRETE PIERS AND ABUTMENTS AT STA. 193+08.37
2 SPANS AT 42'-9" AND 1 AT 110'-3".
6. ILL. RTE. 53 (N.B.) OVER INDUSTRIAL AVE. SN-016-0375
INCLUDES ONE 3 SPAN CONTINUOUS R.C. SLAB STRUCTURE WITH STEEL GIRDERS ON CONCRETE PIERS AND ABUTMENTS AT STA. 243+49.94
2 SPANS AT 45'-2" AND 1 AT 59'-2".
7. ILL. RTE. 53 (S.B.) OVER INDUSTRIAL AVE. SN-016-1120
INCLUDES ONE 3 SPAN CONTINUOUS R.C. SLAB STRUCTURE WITH STEEL GIRDERS ON CONCRETE PIERS AND ABUTMENTS AT STA. 243+49.94
2 SPANS AT 45'-2" AND 1 AT 59'-2".

STATE OF ILLINOIS
DEPARTMENT OF TRANSPORTATION

DIVISION OF HIGHWAYS
PLANS FOR PROPOSED
FEDERAL AID HIGHWAY

SCALES
PLAN
PROFILE HORIZ.
PROFILE VERT.
CROSS SECTIONS

F.A. 342 (ILL. RTE. 53)
SECTION 531(1&2)RS-1(89) & 1989-107BR
ILL. RTE. 62 TO U.S. RTE. 14
RESURFACING AND BRIDGE DECK REHABILITATION
COOK COUNTY
C-91-255-90

FAP RTE	SECTION	COUNTY	TOTAL SHEETS	SHEET NO.
342		COOK	271	1

PROJECT: 531(1&2)RS-1(89) & 1989-107BR
D-91-475-89



DESIGN DESIGNATION
9630(10) TRUNK 5.5(B-20)

STATE OF ILLINOIS
DEPARTMENT OF TRANSPORTATION
DIVISION OF HIGHWAYS

SUBMITTED: *Jan 2 1991*

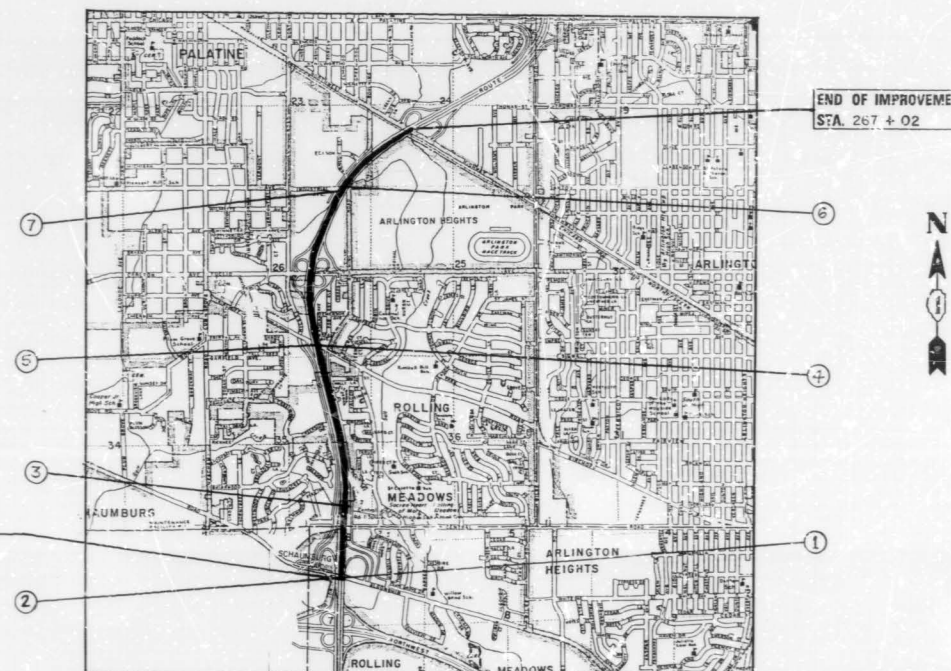
EXAMINED: *Jan 25 1991* *Ray D. Gould*
DIRECTOR OF PLANS AND CONTRACTS

PASSED: *Jan 25 1991*

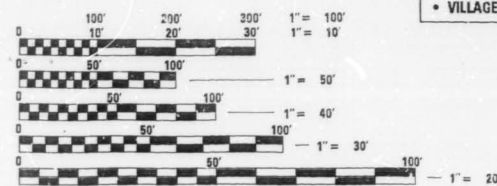
APPROVED: *Jan 25 1991*
DIRECTOR OF HIGHWAYS

PRINTED BY AUTHORITY OF THE
STATE OF ILLINOIS

FOR J.U.L.I.E. INFORMATION CALL 1-800-892-0123



PROJECT LOCATED IN:
• VILLAGE OF ROLLING MEADOWS
• VILLAGE OF ARLINGTON HEIGHTS



FULL SIZE PLANS HAVE BEEN PREPARED USING STANDARD ENGINEERING SCALES. REDUCED SIZED PLANS WILL NOT CONFORM TO STANDARD SCALES. IN MAKING MEASUREMENTS ON REDUCED PLANS, THE ABOVE SCALES MAY BE USED.

CONTRACT NO. 80797

NET LENGTH OF IMPROVEMENT = 15,102 LIN. FT. = 2.860 MI.
GROSS LENGTH OF IMPROVEMENT = 15,102 LIN. FT. = 2.850 MI.

PLAN PREPARATION ENGINEER
L. SORENSON, J. M. DEYONG (708) 705-4432



F. A. P. NO.	SECTION	COUNTY	TOTAL SHEETS	SHEET NO.
392	*	COOK	271	2
STA.	TO STA.			
FED. ROAD DIST. NO. 7	ILLINOIS	FED. AID PROJECT		

*531(142)RS-1189E1989-107 BR

INDEX OF SHEETS

SHEET NO.	DESCRIPTION		
1	TITLE SHEET	⊕ 158-179	SURVEILLANCE
2	INDEX OF SHEETS, STATE STANDARDS AND PLAN NOTES	180	LUG SYSTEM DETAIL
3-7	SUMMARY OF QUANTITIES	* 181-185	APPROACH SLAB AND SHOULDER PAVEMENT DETAILS
Ⓛ 8-11	TYPICAL CROSS SECTIONS	186	BRIDGE APPROACH SHOULDER PAVEMENT
12-24	PLAN - MAINLINE	187-193	BRIDGE PLANS - ALGONQUIN ROAD (NB)
25-34	PLAN - RAMPS	△ ± 194-200	BRIDGE PLANS - ALGONQUIN ROAD (SB)
35-38	BARRIER WALL DETAILS	201-208	BRIDGE PLANS - SALT CREEK
39	IMPACT ATTENUATOR & CORRUGATED BITUMINOUS SHOULDER DETAILS	209-215	BRIDGE PLANS - KIRCHOFF ROAD (NB)
40	EUCLID AVENUE RECONSTRUCTION PROFILE	216-222	BRIDGE PLANS - KIRCHOFF ROAD (SB)
41-48	BARRIER WALL PROFILE	223-228	BRIDGE PLANS - INDUSTRIAL AVENUE (NB)
49-61	DRAINAGE AND UTILITIES - MAINLINE	229-234	BRIDGE PLANS - INDUSTRIAL AVENUE (SB)
62-66	DRAINAGE AND UTILITIES - RAMPS	235	NEOPRENE JOINT DETAIL
67-68	CATCH BASIN AND INLET DETAILS	236	RETROFIT CONCRETE PARAPET DETAIL
69-77	TYPICAL CROSS SECTIONS - STAGING	237	BAR SPLICER DETAIL
78-92	SUGGESTED STAGES OF CONSTRUCTION	238-241	CROSS SECTIONS - UNDER EUCLID AVENUE
93	TEMPORARY INFORMATIONAL SIGNING - FOR STAGING	242-244	CROSS SECTIONS - COLLECTOR DISTRIBUTOR MEDIAN (NB)
94	TEMPORARY CONCRETE BARRIER WITH IMPACT ATTENUATOR	245-247	CROSS SECTIONS - COLLECTOR DISTRIBUTOR (SB)
95-97	LANE CLOSURES - FREEWAY STANDARDS	248-262	CROSS SECTIONS - CENTERLINE MEDIAN
98	RAMP CLOSURES - DETAIL	263-264	CROSS SECTIONS - DITCH REGRADING
99	TEMPORARY PAVEMENT MARKING - LETTERS AND SYMBOLS	265-271	DISTRICT DETAILS
100	TRAFFIC CONTROL - SIDEROADS, INTERSECTIONS, AND DRIVEWAYS	Ⓢ INCLUDES 169A * INCLUDES 184A △ ± INCLUDES 199A, 199B	
101-106	SIGN TRUSS PLAN AND DETAILS		
107	TEMPORARY INFORMATION SIGNING - SIGN TRUSS REMOVAL		
108-121	PAVEMENT MARKING		
122-148	TRAFFIC SIGNIN STRUCTURES		
149-157	ELECTRICAL PLAN AND DETAILS		

LIST OF STATE STANDARDS

STANDARD #	DESCRIPTION
2149-11	DELINEATORS
2213-4	FRAME AND LIDS, TYPE 1
2225-9	REINFORCEMENT FOR CONTINUOUSLY REINFORCED P.C.C. PAVEMENT
2228-4	METAL END SECTION FOR PIPE CULVERTS
2230-16	STEEL PLATE BEAM GUARDRAIL
2233-12	36' CONTINUOUSLY REINFORCED P.C.C. PAVEMENT
2237-11	B.A.M. SHOULDER DETAILS - ADJACENT TO RIGID PAVEMENT
2298-8	TYPICAL APPLICATION OF TRAFFIC CONTROL DEVICES
2299-11	DESIGN OF TRAFFIC CONTROL DEVICES
2300-3	FLAGMAN TRAFFIC CONTROL SIGN
2307-6	TYPICAL APPLICATION OF TRAFFIC CONTROL DEVICES SHORT-TIME OPERATION, DAY OR NIGHT
2308-5	TYPICAL APPLICATION OF TRAFFIC CONTROL DEVICES RURAL, DAY OR NIGHT, MOVING OPERATIONS
2314-5	TYPICAL APPLICATION OF TRAFFIC CONTROL DEVICES MULTILANE DIV. AND UNDIV., RURAL, DAY OR NIGHT
2316-12	TYPICAL APPLICATION OF TRAFFIC CONTROL DEVICES MULTILANE DIV. AND UNDIV., RURAL, OVER ONE DAY
2323-11	PAVEMENT JOINTS
2324-7	BRIDGE APPROACH SHOULDER PAVEMENT
2326-3	TRAFFIC BARRIER TERMINAL, TYPE 10
2327-11	SUB-SURFACE DRAINS
2333-3	CONCRETE BARRIER
2336-4	TRAFFIC BARRIER TERMINAL, TYPE 1 AND 1A
2337-2	TRAFFIC BARRIER TERMINAL, TYPE 2
2338-2	TRAFFIC BARRIER TERMINAL, TYPE 3 & 3A
2340-4	TRAFFIC BARRIER TERMINAL, TYPE 5 & 5A
2341-3	TRAFFIC BARRIER TERMINAL, TYPE 6
2360-4	BRIDGE APPROACH PAVEMENT (50 FT.)
2362-3	CONCRETE HEADWALL FOR PIPE DRAINS
2381	TEMPORARY EROSION CONTROL SYSTEMS
2383-1	TEMPORARY CONCRETE BARRIER
2385	FRAME AND GRATE, TYPE 20
2386	FRAME AND GRATE, TYPE 21
2387	FRAMES AND GRATES, TYPE 22
2419	TYPICAL APPLICATION OF TRAFFIC CONTROL DEVICES MULTILANE DIVIDED AND UNDIVIDED RURAL, DAY OR NIGHT OPERATIONS
2425-1	CLASS A PATCHES
2427-1	CLASS C AND D PATCHES
U-2	TYPICAL APPLICATION OF TRAFFIC CONTROL DEVICES
U-4	TYPICAL APPLICATION OF TRAFFIC CONTROL DEVICES
△ 2429	CONCRETE SHOULDERS

PLAN NOTES

BEFORE STARTING ANY EXCAVATION, THE CONTRACTOR SHALL CALL "JULIE" AT 800-892-0123 OR "DIGGER" (CHICAGO UTILITY ALERT NETWORK), (312)774-7000 FOR FIELD LOCATIONS OF BURIED ELECTRIC, TELEPHONE AND GAS FACILITIES. (48 HOURS NOTIFICATION IS REQUIRED).

THE CONTRACTOR SHALL COORDINATE CONSTRUCTION ACTIVITIES WITH UTILITY COMPANIES AND THE CITY OF CHICAGO.

THE CONTRACTOR WILL NOT BE ALLOWED TO SET UP A YARD OR FIELD OFFICE ON STATE PROPERTY WITHOUT WRITTEN PERMISSION FROM THE DEPARTMENT.

THE REMOVAL OF GUARDRAIL TERMINAL SECTIONS SHALL BE INCLUDED IN THE UNIT PRICE PER LINEAL FOOT FOR STEEL PLATE BEAM GUARD RAIL REMOVAL.

BARRICADES: THE CONTRACTOR SHALL PROVIDE AND INSTALL TWO (2) WEIGHTED SAND BAGS ON EACH TYPE I OR TYPE II BARRICADE USED. (ONE (1) WEIGHTED SAND BAG ACROSS EACH BOTTOM RAIL).

WHEN ARTIFICIAL LIGHTING IS UTILIZED IN NIGHT OPERATIONS THE CONTRACTOR SHALL EXERCISE THE UTMOST PRECAUTIONS IN PREVENTING ADVERSE VISIBILITY TO THE MOTORING PUBLIC AND ADJOINING RESIDENTIAL AREAS.

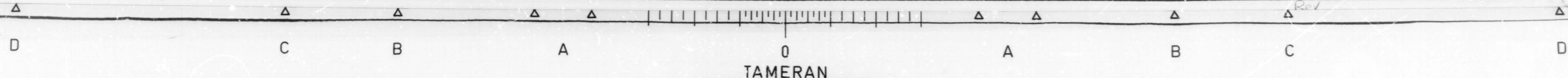
Ⓛ INCLUDES 10A

REVISIONS	
NAME	DATE

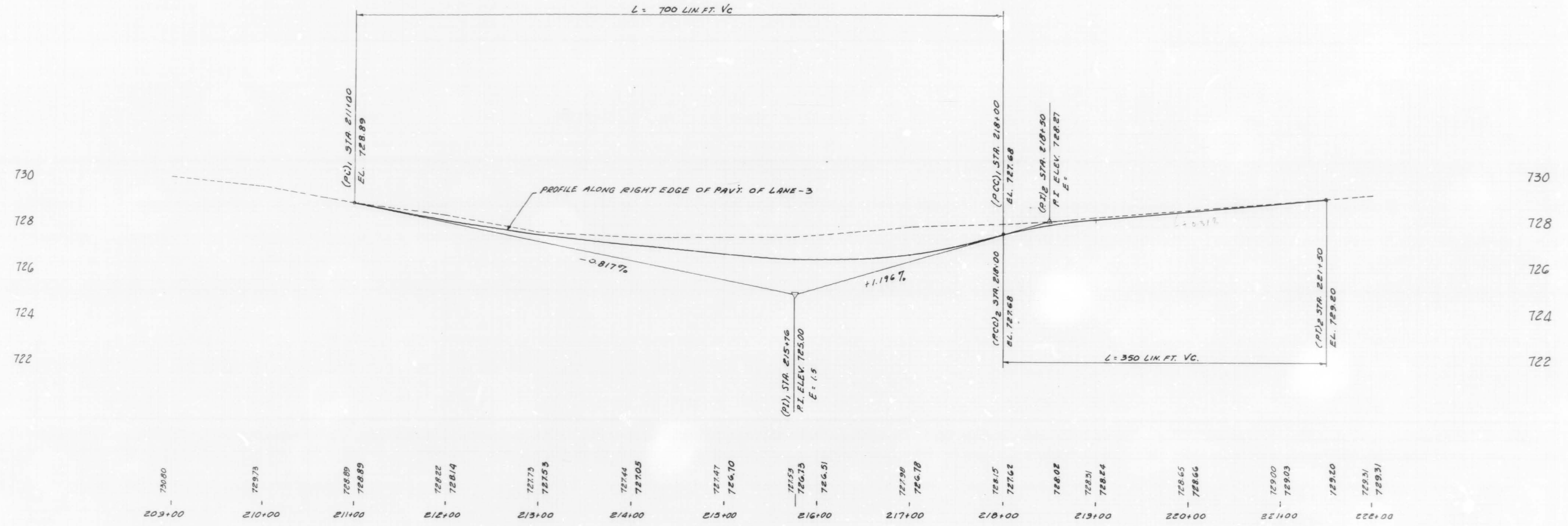
ILLINOIS DEPARTMENT OF TRANSPORTATION
 INDEX OF SHEETS,
 PLAN NOTES
 AND
 STATE STANDARDS

SCALE: VERT. _____
 HORIZ. _____
 DATE _____ DRAWN BY _____
 CHECKED BY _____

△ Rev 2-6-91



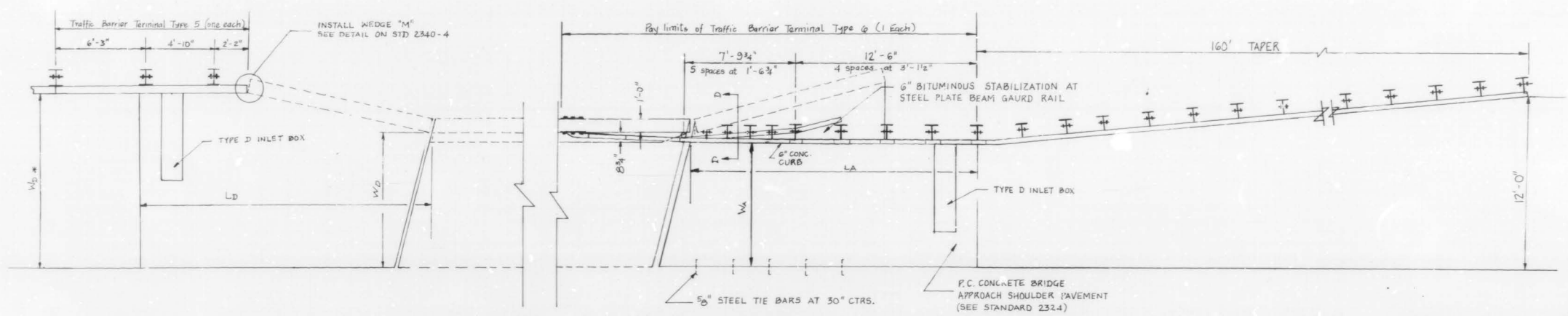
DRAW COPY



ILLINOIS DEPARTMENT OF TRANSPORTATION
 PROFILE OF ROUTE-53 RECONSTRUCT.
 UNDER EUCLID



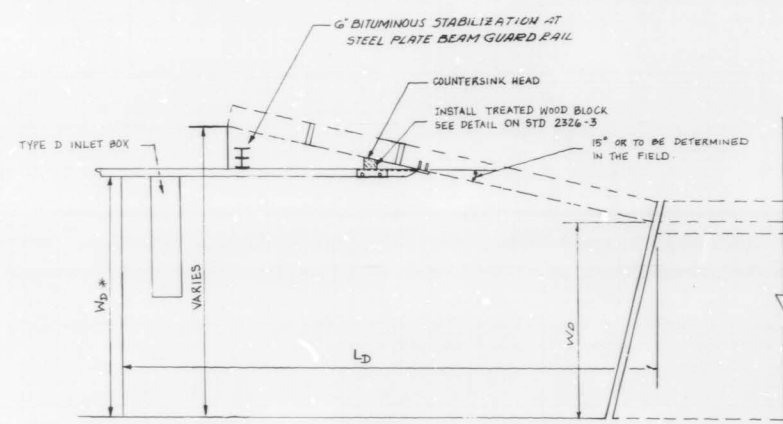
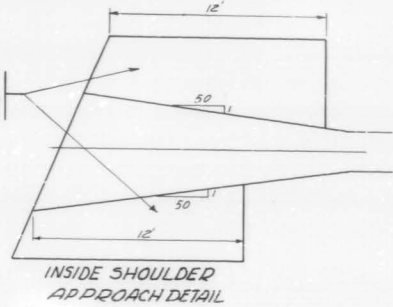
SECTION	COUNTY	TOTAL SHEETS	SHEET NO.
342	COOK	271	186
STA	TO STA		
FED. ROAD DIST. NO.	ILLINOIS	FED. AID PROJECT	



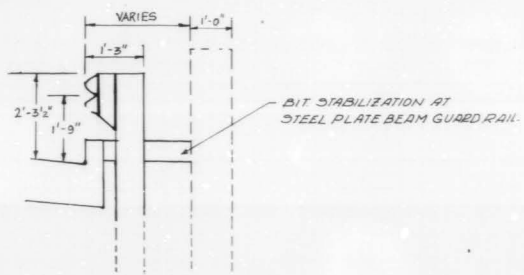
OUTSIDE SHOULDER APPROACH DETAIL (TYPE 5)
 ANDERSON NB/SB NORTHWEST SB
 PALATINE SB SALT CREEK NB/SB

P.C. CONCRETE BRIDGE APPROACH SHOULDER PAVEMENT STANDARD 2324

NOTE:
 TYPE D INLET BOX IS NOT REQUIRED



OUTSIDE SHOULDER APPROACH DETAIL (TYPE 10)
 PALATINE NB KIRCHOFF NB/SB
 NORTHWEST NB ALGONQUIN NB/SB
 INDUSTRIAL NB/SB



NORTHBOUND

	W _A	W _D	L _A	L _D	W _D *
ALGONQUIN RD.	9.3'	10.4'	19'-6 3/4"	15.0'	12.0'
SALT CREEK	9.3'	9.7'	19'-6 3/4"	12.0'	9.7'
KIRCHOFF RD.	12.0'	12.8'	19'-6 3/4"	14.0'	12.8'
INDUSTRIAL AVE.	9.7'	11.1'	19'-6 3/4"	17.8'	12.0'
NORTHWEST HWY.	9.3'	10.75'	19'-6 3/4"	19.2'	12.0'
PALATINE RD.	8.3'	8.3'	19'-6 3/4"	19.1'	12.0'
ANDERSON	9.3'	10.3'	19'-6 3/4"	12.0'	10.3'

SOUTHBOUND

	W _A	W _D	L _A	L _D	W _D *
ALGONQUIN RD.	9.3'	10.4'	19'-6 3/4"	15.2'	12.0'
SALT CREEK	9.3'	9.9'	19'-6 3/4"	12.0'	9.9'
KIRCHOFF RD.	12.0'	12.2'	19'-6 3/4"	14.0'	12.2'
INDUSTRIAL AVE.	9.7'	12.9'	19'-6 3/4"	14.0'	12.0'
NORTHWEST HWY.	9.3'	10.1'	19'-6 3/4"	19.5'	11.8'
PALATINE RD.	5.6'	5.6'	19'-6 3/4"	19.2'	8.5'
ANDERSON	9.5'	10.2'	19'-6 3/4"	12.0'	10.2'

REVISIONS	
NAME	DATE

ILLINOIS DEPARTMENT OF TRANSPORTATION
 ILLINOIS ROUTE-53

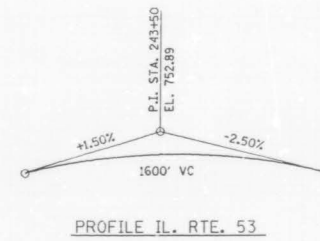
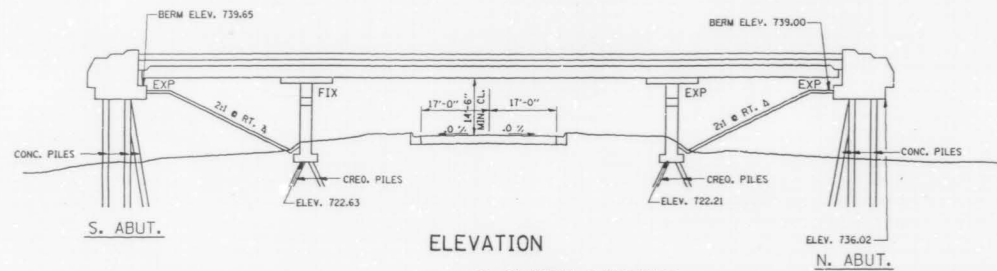
PC CONCRETE BRIDGE
 APPROACH SHOULDER PAVT. (SPECIAL)

SCALE: VERT. HORIZ.
 DATE: DRAWN BY: CHECKED BY:



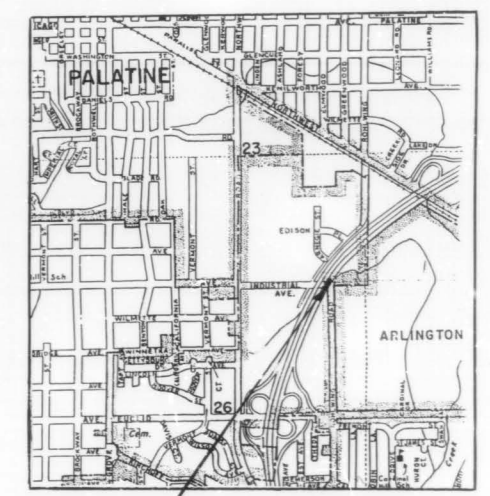
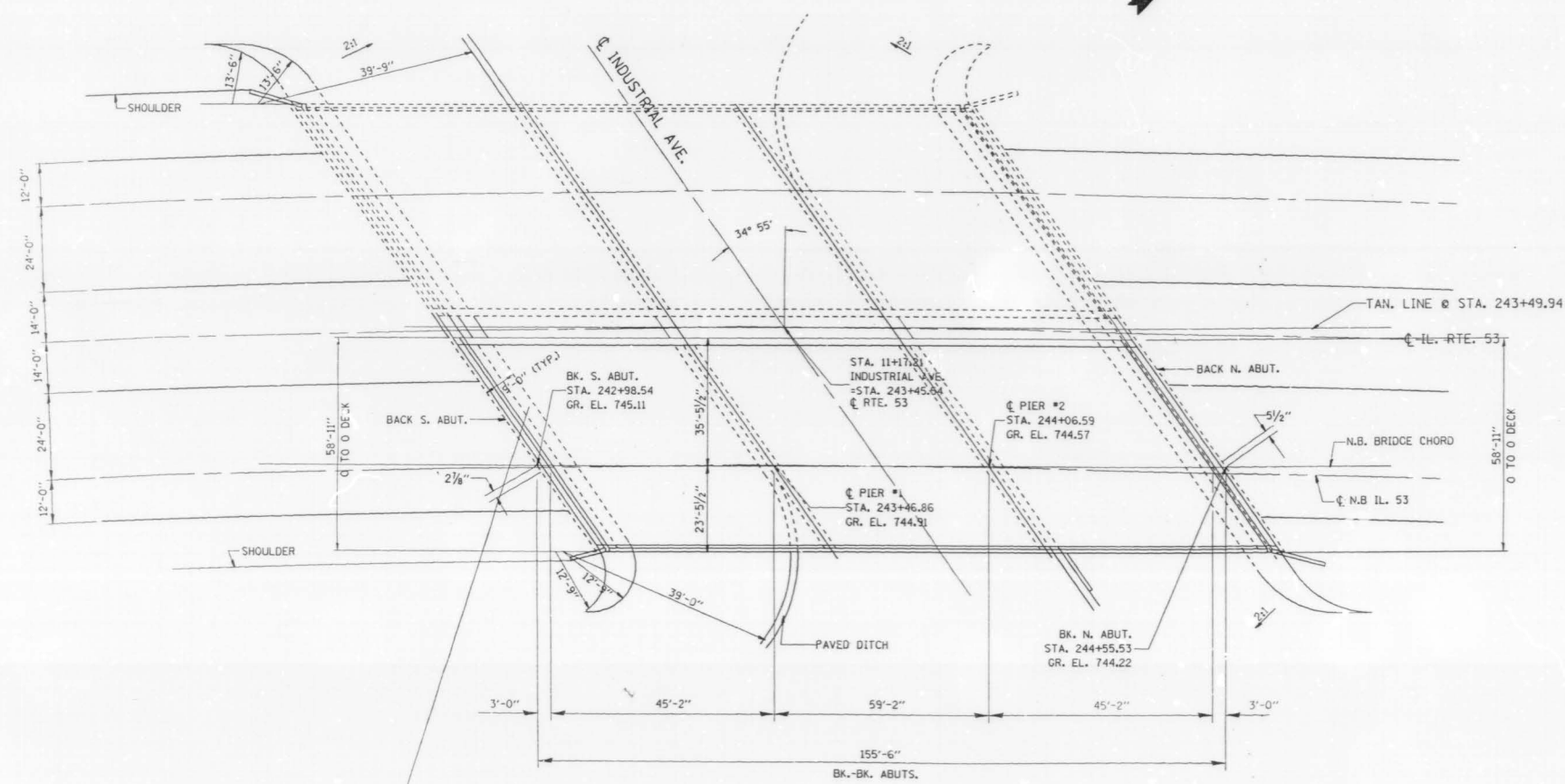
EXISTING BRIDGE DESCRIPTION
 THE BRIDGE CONSIST OF A 3 SPAN CONTINUOUS WIDE FLANGE BEAM STRUCTURE WITH 2 SPANS AT 45'-2" AND 1 AT 59'-2" ON OPEN R.C. ABUTMENTS AND R.C. PIERS. THE 7" THICK CONCRETE DECK HAS A 2" THICK BITUMINOUS CONCRETE OVERLAY.

PLAN	SECTION	DATE	BY	CHK
342	*	COOK	271	223
STA.	TO STA.			
* 53111 & 21RS-11891 & 1989-107BR				
SHEET 1 OF 6				



INDEX OF SHEETS

- 1) PLAN AND ELEVATION
- 2) GENERAL NOTES AND SUMMARY OF QUANTITIES
- 3) DECK DETAILS
- 4) DELAMTECT AND BOTTOM DECK SURVEY
- 5) JOINT RECONSTRUCTION DETAILS
- 6) STAGING CROSS SECTION



STRUCTURE NO. 016-0375
 NORTHBOUND

REVISIONS	
NAME	DATE

ILLINOIS DEPARTMENT OF TRANSPORTATION
 IL. RTE. 53 INDUSTRIAL AVE. N.B.
 BRIDGE REHABILITATION
 STRUCTURE NO. 016-0375
 PLAN & ELEVATION

SCALE: VERT. NONE
 HORIZ. DATE 10/23/90

DRAWN BY
 CHECKED BY

11-OCT-90 19:30B (CREATED)
 ZF6E110404010147989P3.00584
 LEVELS = 35

VI--BR4



F.A.P. RTE	SECTION	COUNTY	TOTAL SHEETS	SHEET NO.
342	*	COOK	271	224
STA.		TO STA.		
FED. ROAD DIST. NO. 1		FED. AID PROJECT		

* 531(142)R3-1(89) & 1989-107 DR
SHEET 2 OF 6

NOTES:

1. ~~The Zinc-silicate and vinyl paint system shall be used for shop and field painting of Structural Steel except where otherwise noted. The color of the vinyl finish coat shall be Munsell No. 7.5G 4/B.~~
2. All structural steel shall be AASHTO M 222 except expansion joint plates and attached bars which shall be AASHTO M 183.
- 2A Deck Repair Method II shall be used for this structure (See Spec. Prov.)
3. Expansion joint plates and attached bars shall be shop painted with the zinc-silicate primer.
4. ~~AASHTO M 222 structural steel shall not be painted except, that for a distance of three times the depth of the beams or girders (but not exceeding 10 feet) each way from deck joints, the AASHTO M 222 structural steel shall be cleaned and given one coat of the zinc-silicate primer and a dark maroon vinyl finish coat. The color of the finish coats shall be Munsell No. 2.5 YR 3/4 reddish brown. Both coats may be applied in the shop with spot painting only in the field.~~
5. The structural steel bearing plates of the Elastomeric Bearing Assembly shall conform to the requirements of AASHTO M 223 Grade 50 (AASHTO M 222).
6. Reinforcement bars shall conform to the requirements of AASHTO M-31, M-42 or M-53 Grade 60.
7. Plan dimensions and details relative to existing structure have been taken from existing plans and are subject to nominal construction variations. It shall be the Contractor's responsibility to verify such dimensions and details in the field and make necessary approved adjustments prior to construction or ordering of materials. Such variations shall not be cause for additional compensation for a change in the scope of the work, however, the Contractor will be paid for the quantity actually furnished at the unit price bid for the work.
8. ~~All accessible end areas of steel beams, exposed top of steel beams, end diaphragms, and bearings designated by the Engineer for painting shall be cleaned by Method 1. The three coat lead and chromate free alkyd paint system shall be applied over all cleaned areas, except the exposed top of steel beams to be embedded in concrete shall receive only one coat of the primer of this system. The color of the final finish coat shall be INTERSTATE GREEN. This work will be paid for in accordance with Article 109.04 of the Standard Specifications.~~

TOTAL BILL OF MATERIALS




ITEM	UNIT	TOTAL
BITUMINOUS CONCRETE REMOVAL (DECK)	SQ. YD.	935
CONCRETE BRIDGE DECK SCARIFICATION, 1/2"	SQ. YD.	935
DECK SLAB REPAIR (PARTIAL DEPTH)	SQ. YD.	11
DECK SLAB REPAIR (FULL DEPTH)	SQ. YD.	15
CONCRETE REMOVAL, SPECIAL	CU. YD.	18.4
HANDRAIL REMOVAL	LIN. FT.	304
NEOPRENE JOINT, 2"	LIN. FT.	152
REINFORCEMENT BARS, EPOXY COATED	POUND	28660
CLASS X CONCRETE SUPERSTRUCTURE	CU. YD.	20.8
MICROSILICIA CONCRETE BRIDGE DECK OVERLAY 2 1/2"	SQ. YD.	935
PROTECTIVE COAT	SQ. YD.	395
PROTECTIVE SHIELD	SQ. YD.	365
CONCRETE PARAPET RETROFIT	LIN. FT.	304
FURNISHING AND ERECTING STRUCTURAL STEEL	POUND	0
SAWING R.C. CONCRETE PAVEMENT, 3/4"	LIN. FT.	3970

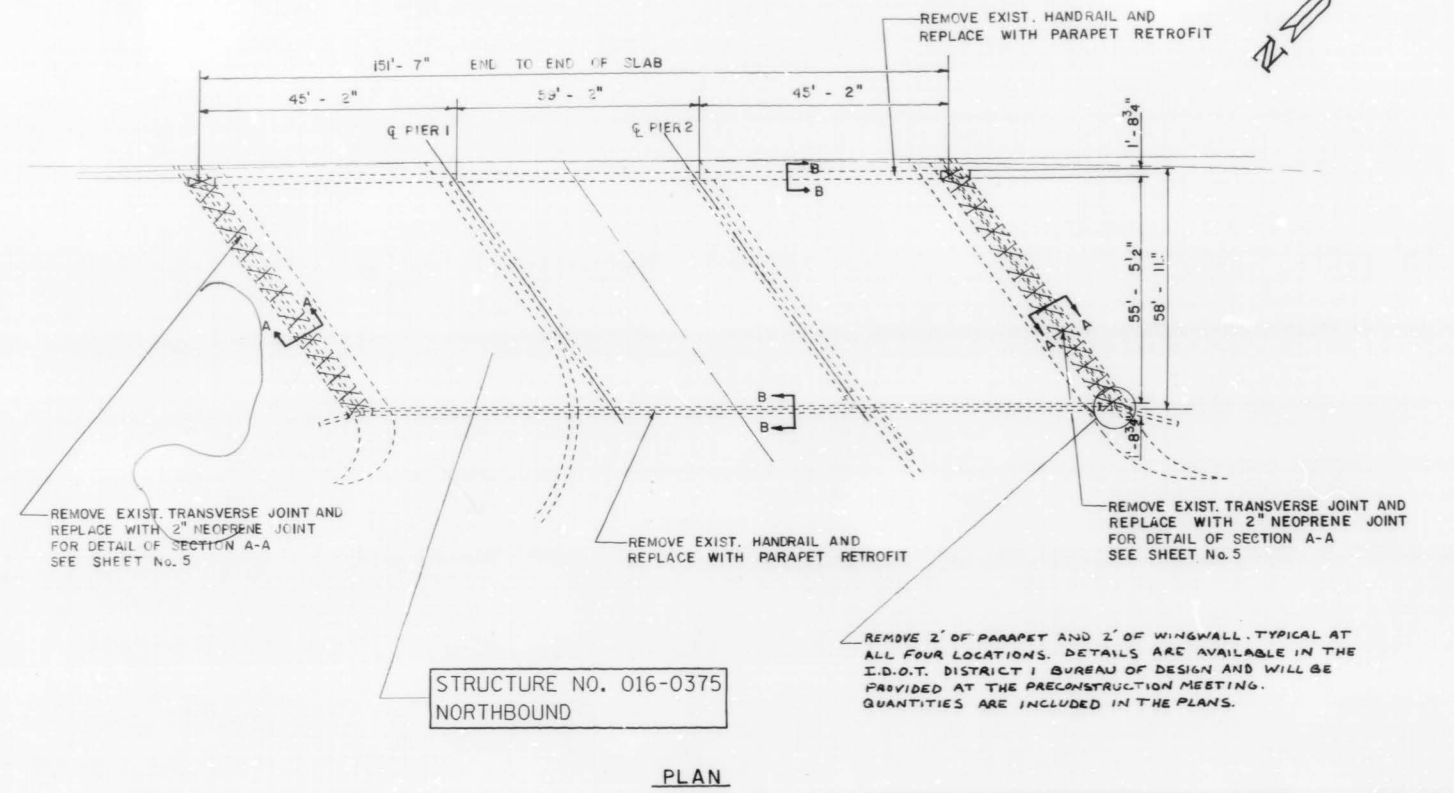
REVISIONS	
NAME	DATE

DEPARTMENT OF TRANSPORTATION
IL RTE 53 @ INDUSTRIAL AVE.
(NORTHBOUND LANES)
GENERAL NOTES
AND
BILL OF MATERIALS
S.N. 016-0375
DATE
CHECKED BY R V

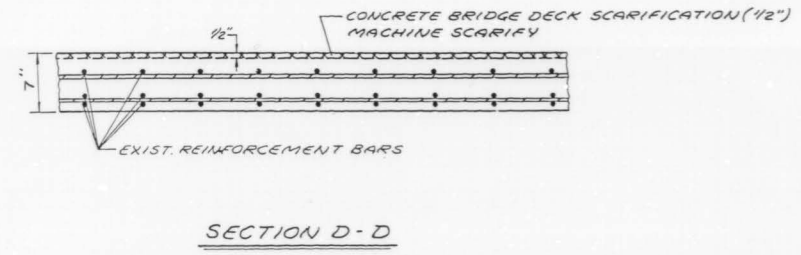
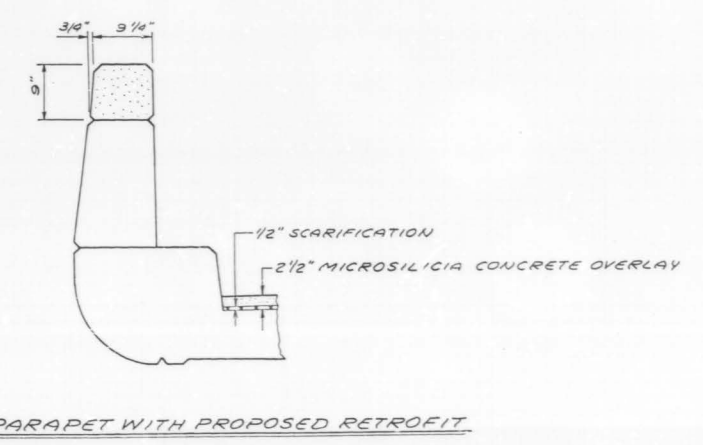
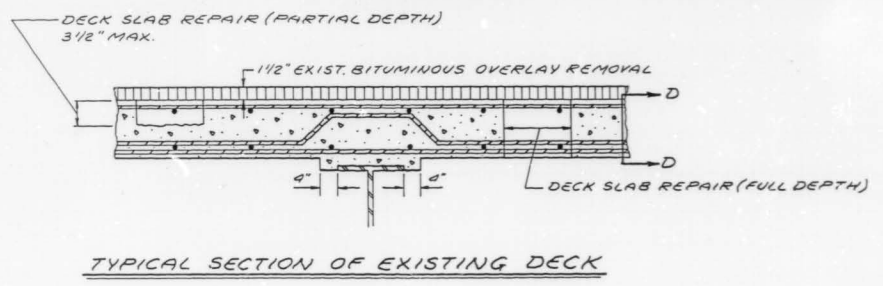
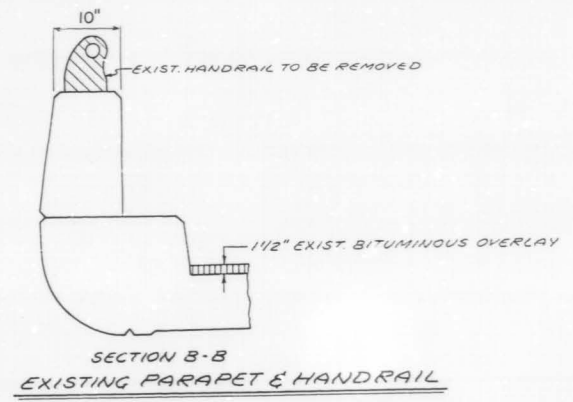


LEGEND

-  DECK SLAB REPAIR (PARTIAL DEPTH) SEE DELAMTEC SHEET No. 4
-  DECK SLAB REPAIR (FULL DEPTH) SEE BOTTOM DECK SURVEY SHEET No. 4
-  CONCRETE TO BE REMOVED



BILL OF MATERIALS		UNIT	QUANTITIES
ITEM			TOTAL
BITUMINOUS CONCRETE REMOVAL (DECK)		SQ. YD.	935
CONCRETE BRIDGE DECK SCARIFICATION, 1/2"		SQ. YD.	935
DECK SLAB REPAIR (PARTIAL DEPTH)		SQ. YD.	25
DECK SLAB REPAIR (FULL DEPTH)		SQ. YD.	30
MICROSILICIA CONCRETE BRIDGE DECK OVERLAY, 2 1/2"		SQ. YD.	935
PROTECTIVE COAT		SQ. YD.	395
PROTECTIVE SHIELD		SQ. YD.	365
PARAPET RETROFIT		LIN. FT.	304
HANDRAIL REMOVAL		LIN. FT.	304



REVISIONS	
NAME	DATE

ILLINOIS DEPARTMENT OF TRANSPORTATION
 IL. RTE. 53 @ INDUSTRIAL AVE. N.B.
 BRIDGE REHABILITATION
 STRUCTURE NO. 016-0375
 DECK DETAILS

SCALE: VERT. HORIZ.
 DATE 10/23/90

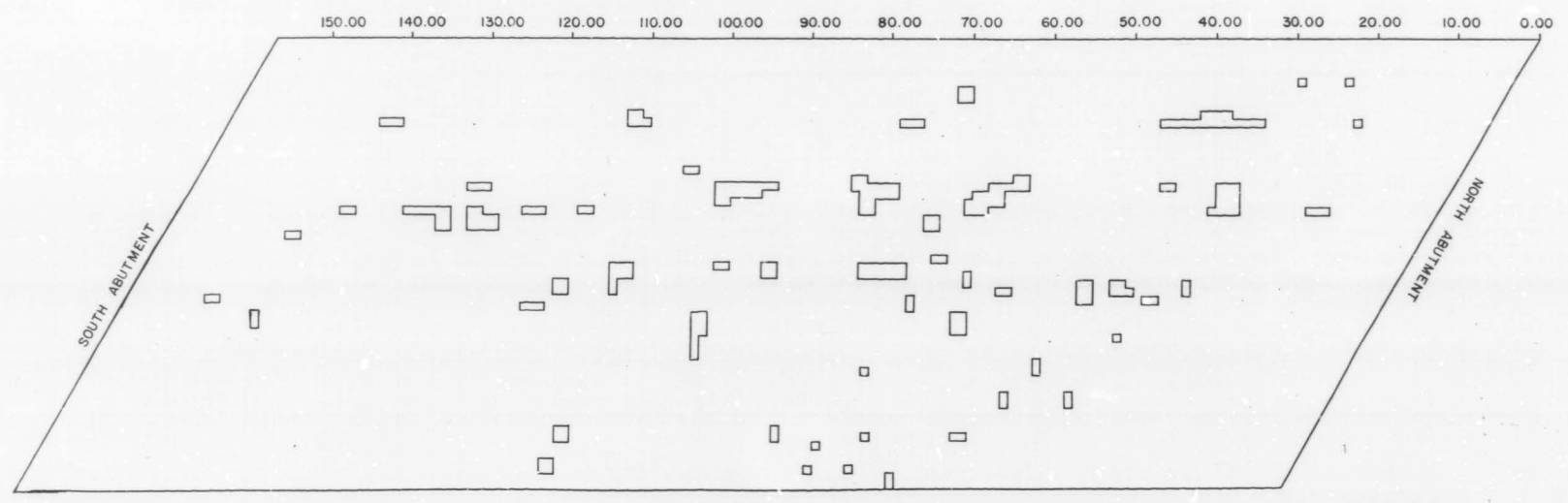
DRAWN BY
 CHECKED BY



F&P RTE	SECTION	COUNTY	TOTAL SHEETS	SHEET NO.
342	*	COOK	271	226
STA.		TO STA.		
FED. ROAD DIST. NO. 7		FED. AID PROJECT		

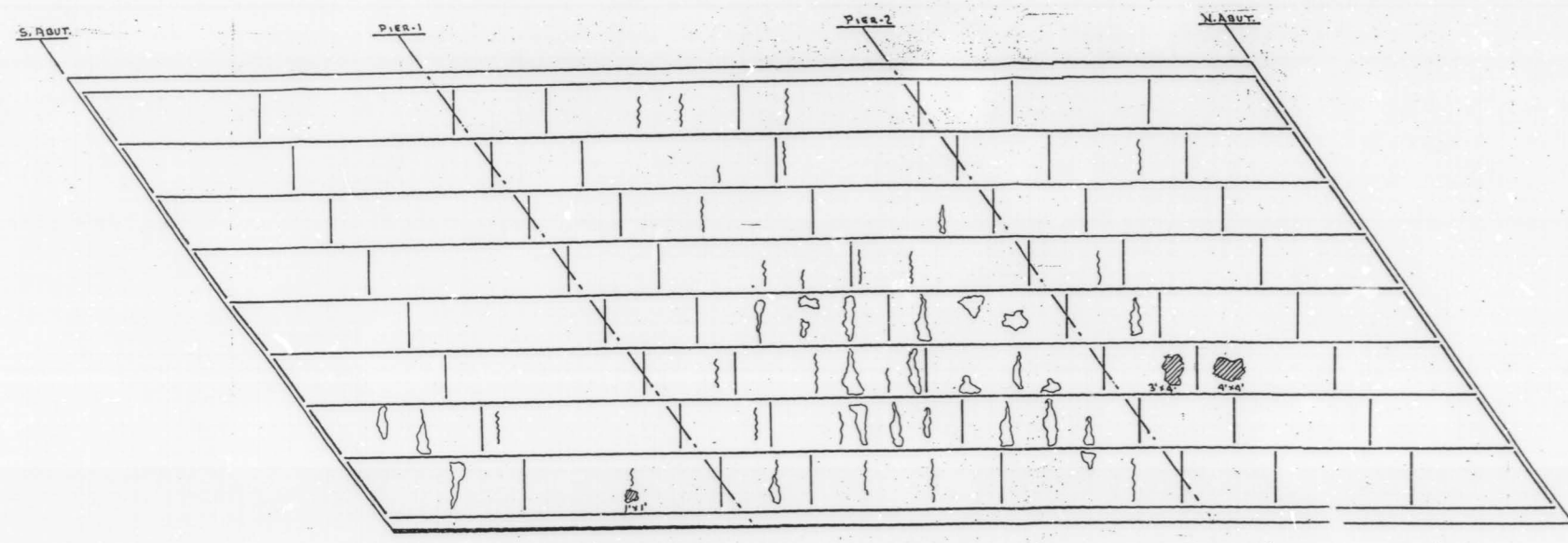
* 531(1&2)RS-1(89) & 1989-107 BR
SHEET 4 OF 6

SCALE: HORIZONTAL 1" = 10'
VERTICAL 1" = 10'



BRIDGE: 016 0375
DATE: 5/24/90
OPERATOR: MATECHICK SKEW 54-35'
COMMENTS: 53 NB/INDUSTRIAL

ROADWAY AREA: 935 SY
DELAMINATED AREA: 25 SY
% DELAMINATED: 3 %



NOTE:
⊗ ⊗ - SPALL AREAS = 29 SQ. FT.
⊕ ⊕ - LEACHING AREAS
||| - LEACHING CRACKS

BRIDGE: ILL 53 N.B./INDUSTRIAL AVE
BRIDGE No. 016-0375 224
BOTTOM DECK SURVEY
FIELD DATA NM DATE 3/6/90
DRAWN BY NM DATE 1/15/90

REVISIONS	
NAME	DATE

DEPARTMENT OF TRANSPORTATION
IL. RTE. 53 @ INDUSTRIAL AVE. N.B.
BRIDGE REHABILITATION
STRUCTURE NO. 016-0375
DELAMTECT AND BOTTOM DECK SURVEY
DATE
CHECKED BY



F&E NO.	SECTION	COUNTY	TOTAL SHEETS	SHEET NO.
342	*	COOK	271	227
STA.	TO STA.		FED. AID PROJECT	
FED. ROAD DIST. NO. 7		ILLINOIS		

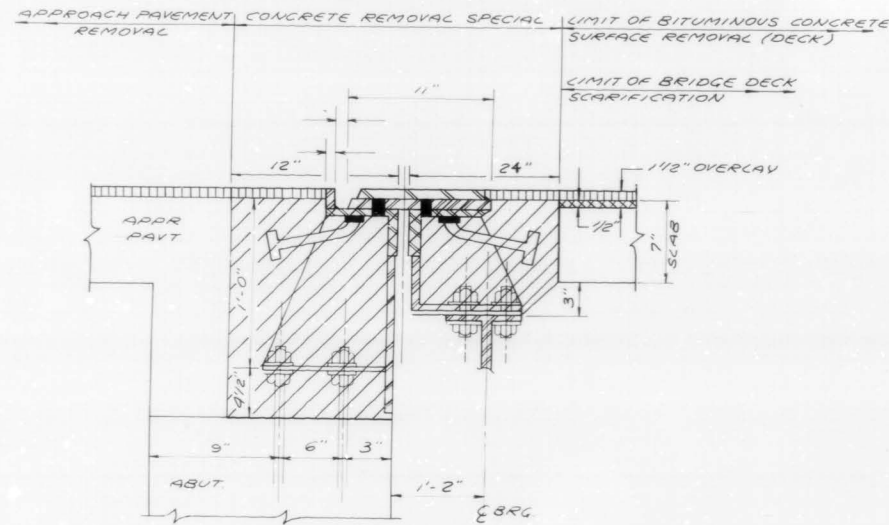
* S31(1E2)RS-1(B9)E1989-107 BR SHEET 5 OF 6
BAR LIST (TWO ABUT.)

BAR NO.	NO.	SIZE	LENGTH	SHAPE
Q ₁ (E)	32	#5	33'-8"	
U ₁ (E)	130	#4	3'-10"	
Q ₂ (E)	20	#6	33'-8"	
U ₁ (E)	130	#4	1'-11"	

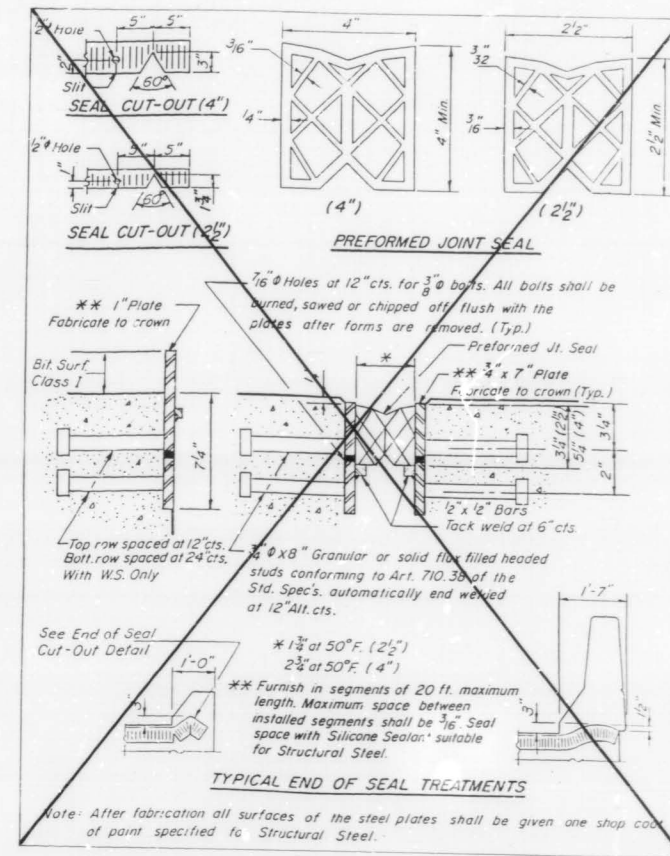
(E) DENOTES EPOXY COATED

NOTES: EXISTING REINFORCEMENT BARS IN THE REMOVAL AREAS SHALL BE CLEANED BEFORE PLACEMENT OF NEW CLASS X CONCRETE. (COST TO BE INCIDENTAL TO "CLASS X CONCRETE")
 REMOVAL OF EXISTING STRUCTURAL STEEL SHALL BE INCIDENTAL TO "CONCRETE REMOVAL SPECIAL".

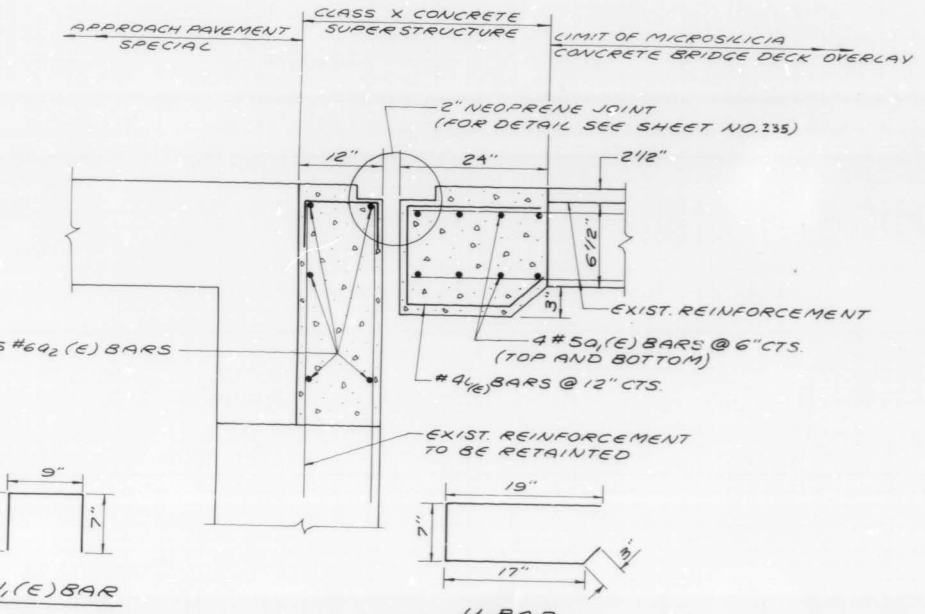
* THE ARRANGEMENT BELOW OF SLIDING PLATE IS FOR THE NORTH ABUTMENT ONLY FOR SOUTH ABUTMENT THE SLIDING PLATE IS WELDED TO ANGLES ON THE ABUTMENT



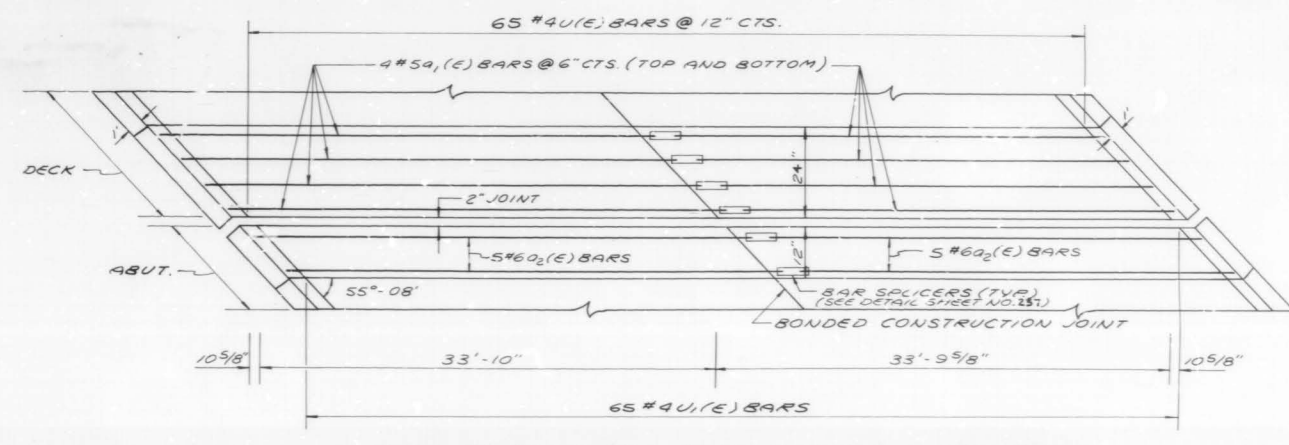
SECTION A-A
 SECTION THRU EXISTING JOINT AT NORTH ABUTMENT



Note: After fabrication all surfaces of the steel plates shall be given one shop coat of paint specified to Structural Steel.



SECTION A-A
 SECTION THRU PROPOSED JOINT AT N. AND S. ABUTMENT



PLAN OF PROPOSED JOINT AT N. AND S. ABUTMENT

BILL OF MATERIALS (TWO ABUTMENTS)

ITEM	UNIT	QUANTITY
CONCRETE REMOVAL, SPECIAL	CU. YD	18.2
REINFORCEMENT BARS (EPOXY COATED)	POUND	2866.0
CLASS X CONCRETE SUPERSTRUCTURE	CU. YD	20.8
SAWING P.C. CONCRETE, PAVEMENT, 3/4"	LIN. FT.	3970
FURNISHING AND ERECTING STRUCTURAL STEEL	POUND	0
NEOPRENE JOINT, 2"	LIN. FT.	152.0
PROTECTIVE COAT	SQ. YD	570

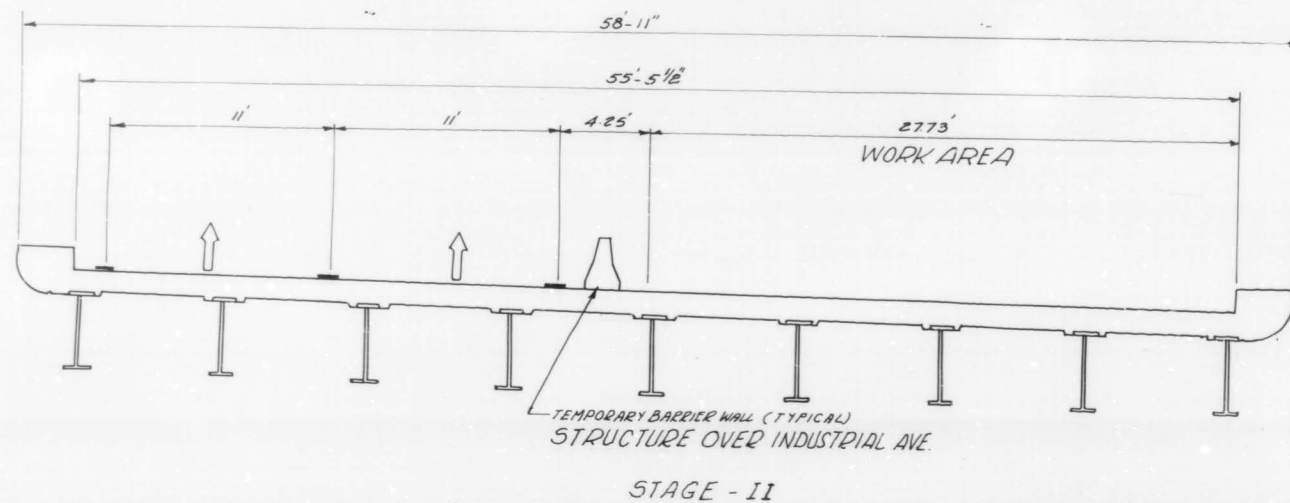
REVISIONS	NAME	DATE

ILLINOIS DEPARTMENT OF TRANSPORTATION
 IL RTE 53 @ INDUSTRIAL AVE.
 (NORTHBOUND LANES)
 STRUCTURE NO. 016-0375
 JOINT RECONSTRUCTION DETAILS

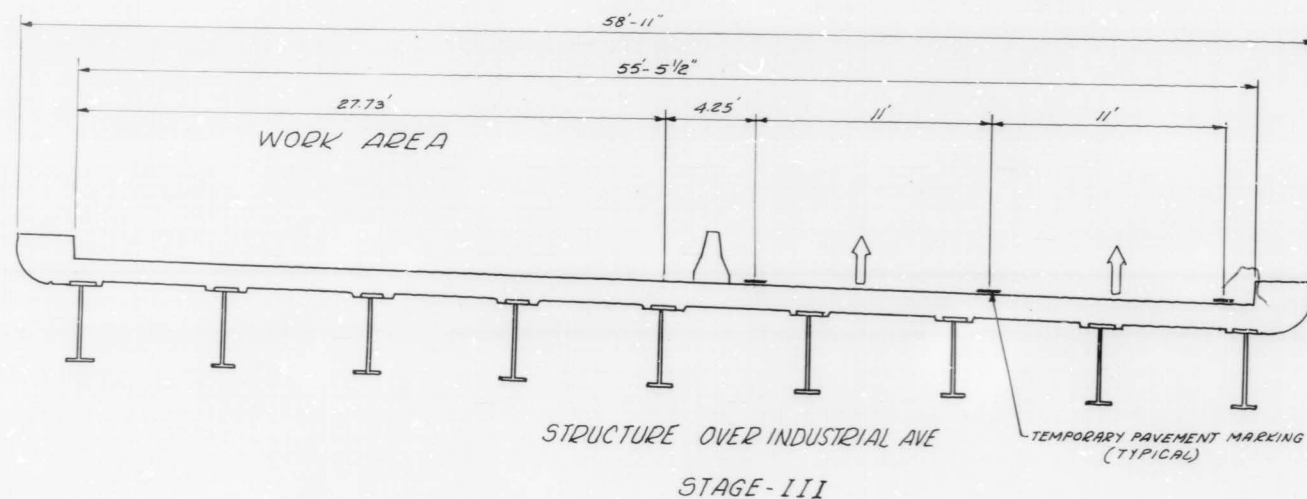
SCALE: VERT. NONE DRAWN BY: J.R.C.
 DATE: CHECKED BY: R.V.



F&E NO.	SECTION	COUNTY	TOTAL SHEETS	SHEET NO.
342	#	COOK	271	228
STA		TO STA		
FED. ROAD DIST. NO.		ILLINOIS	FED. AID PROJECT	
* 531 (1&2)RS-(89) § 1989-107BR SHEET 6 OF 6				



- STAGE II
- 1.) PLACE ALL TRAFFIC CONTROL AND REROUTE TRAFFIC TO OUTSIDE LANES
 - 2.) REMOVE EXISTING BRIDGE DECK BITUMINOUS OVERLAY 1 1/2"
 - 3.) SCARIFY BRIDGE DECK SLAB 1/2"
 - 4.) REMOVE EXISTING HANDRAIL AND REPLACE WITH A CONCRETE PARAPET RETROFIT
 - 5.) CONSTRUCT PARTIAL AND FULL DEPTH DECK SLAB REPAIRS
 - 6.) REMOVE EXISTING TRANSVERSE JOINTS
 - 7.) INSTALL PROPOSED PREFORMED JOINT SEAL OR NEOPRENE JOINTS
 - 8.) PLACE PROPOSED MICROSILICIA CONCRETE BRIDGE DECK OVERLAY 2 1/2"



- STAGE III
- 1.) RELOCATE ALL TRAFFIC CONTROL AND REROUTE TRAFFIC TO INSIDE LANES
 - 2.) REMOVE EXISTING BRIDGE DECK BITUMINOUS OVERLAY 1 1/2"
 - 3.) SCARIFY BRIDGE DECK SLAB 1/2"
 - 4.) REMOVE EXISTING HANDRAIL AND REPLACE WITH A CONCRETE PARAPET RETROFIT.
 - 5.) CONSTRUCT PARTIAL AND FULL DEPTH DECK SLAB REPAIRS
 - 6.) REMOVE EXISTING TRANSVERSE JOINTS
 - 7.) INSTALL PROPOSED PREFORMED JOINT SEAL OR NEOPRENE JOINTS
 - 8.) PLACE PROPOSED MICROSILICIA CONCRETE BRIDGE DECK OVERLAY 2 1/2"

REVISIONS	
NAME	DATE

ILLINOIS DEPARTMENT OF TRANSPORTATION
ILLINOIS ROUTE-53
(NORTHBOUND)
TYPICAL STAGING CROSS SECTION
STRUCTURE OVER INDUSTRIAL AVE.
STRUCTURE NO. 016-0375

SCALE: VERT. DRAWN BY: BGM
HORIZ. CHECKED BY: RY
DATE



DAR COPY