

STATE OF ILLINOIS
DEPARTMENT OF TRANSPORTATION
DIVISION OF HIGHWAYS

**PROPOSED
HIGHWAY PLANS**

F.A.I. ROUTE 290 / F.A.P. ROUTE 342 I-290 / ILL 53
US 12 (RAND RD.) TO ILL 72 (HIGGINS RD.)
SECTION: (531-3.1, 0305-302 K) RS-5
RESURFACING, BRIDGE DECK REPAIR, JOINT REPAIR

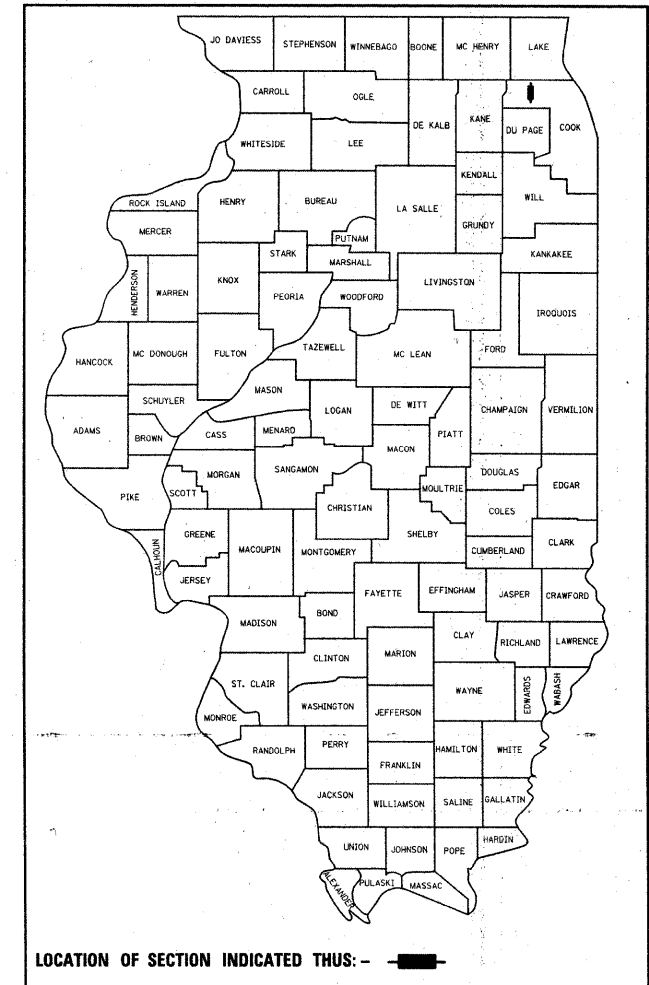
PROJECT: --
COOK COUNTY
C-91-033-10

FOR INDEX OF SHEETS, SEE SHEET NO. 2

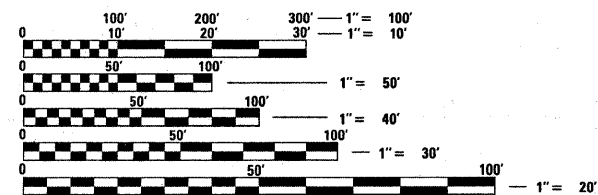
F.A.I. RTE.	SECTION	COUNTY	TOTAL SHEETS	SHEET NO.
290	(531-3.1, 0305-302) KRS-5	COOK	314	1
FED. ROAD DIST. NO. 1		ILLINOIS	CONTRACT NO. 60138	

*314+2=316

D-91-033-10



PROJECT IS LOCATED IN THE CITY OF ROLLING MEADOWS AND THE VILLAGES OF ARLINGTON HEIGHTS, PALATINE, & SCHAUMBURG



FULL SIZE PLANS HAVE BEEN PREPARED USING STANDARD ENGINEERING SCALES. REDUCED SIZED PLANS WILL NOT CONFORM TO STANDARD SCALES. IN MAKING MEASUREMENTS ON REDUCED PLANS, THE ABOVE SCALES MAY BE USED.

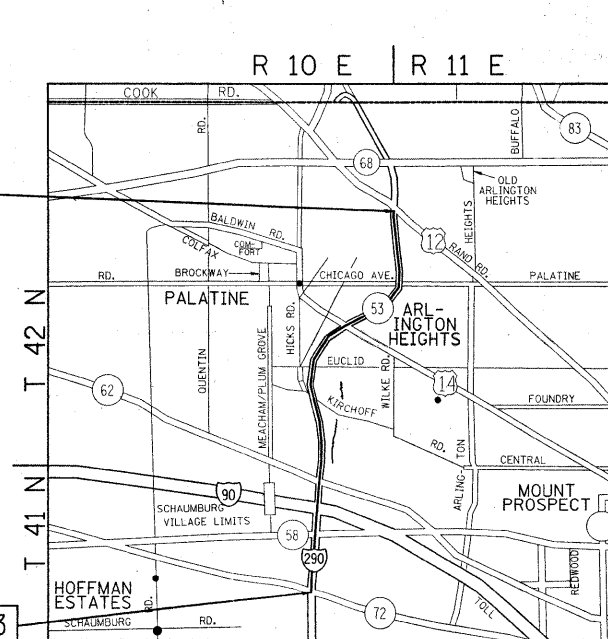
J.U.I.E.
JOINT UTILITY LOCATION INFORMATION FOR EXCAVATION
1-800-892-0123
OR 811

PROJECT ENDS STA. 436+00

RESURFACING OMISSIONS:

- STA. 81+05 TO STA. 82+71
- STA. 109+80 TO STA. 112+01
- STA. 133+91 TO STA. 137+47
- STA. 153+26 TO STA. 154+74
- STA. 173+87 TO STA. 178+97
- STA. 224+22 TO STA. 230+98
- STA. 274+37 TO STA. 280+65
- STA. 298+84 TO STA. 308+60
- STA. 360+26 TO STA. 366+78
- STA. 383+64 TO STA. 389+05
- STA. 433+68 TO STA. 436+00

PROJECT BEGINS STA. 58+43



PALATINE, SCHAUMBURG & ELK GROVE TOWNSHIPS

TRAFFIC DATA (MAINLINE)
SPEED LIMIT: 55 MPH
2007 ADT: 194,100

PROJECT ENGINEER: DAN WILGREEN (847) 705-4240
PROJECT MANAGER: KEN ENG

CONTRACT NO. 60138

GROSS LENGTH OF PROJECT = 37,757 FEET (7.2 MILES)
NET LENGTH OF PROJECT = 32,651 FEET (6.2 MILES)

STATE OF ILLINOIS
DEPARTMENT OF TRANSPORTATION
DIVISION OF HIGHWAYS

SUBMITTED FEBRUARY 3, 2010

Diane M. O'Keefe
DEPUTY DIRECTOR OF HIGHWAYS, REGION ENGINEER

March 19, 2010
Scott E. Stott, PE
Acting ENGINEER OF DESIGN AND ENVIRONMENT

March 19, 2010
Christine M. Reed
DIRECTOR OF HIGHWAYS, CHIEF ENGINEER

PRINTED BY THE AUTHORITY
OF THE STATE OF ILLINOIS

INDEX OF SHEETS

SHEET NO.	DESCRIPTION
1	TITLE SHEET
2	INDEX OF SHEETS, STATE STANDARDS, AND GENERAL NOTES
3-5	SUMMARY OF QUANTITIES
6-10	SUGGESTED SEQUENCE OF OPERATIONS FOR ROADWAY WORK (TYPICAL & NOTES)
11-13	TYPICAL SECTIONS
14-46 46A, 46B	ROADWAY & PAVEMENT MARKING PLANS TRAFFIC PLAN DETAILS
47-137	MAINTANENCE OF TRAFFIC PLANS FOR BRIDGE REPAIRS
138-263	BRIDGE JOINT REPAIR PLANS
264-269	FRONTAGE ROAD DRAINAGE PLANS
270-274	DETECTOR LOOP REPLACEMENT PLANS
275-297	INDUCTION LOOP PLANS
298	DETAIL OF STORM SEWER CONNECTION TO EXISTING SEWER (BD-07)
299	PAVEMENT PATCHING FOR HOT-MIX ASPHALT SURFACED PAVEMENT (BD-22)
300	BUTT JOINT AND HOT-MIX ASPHALT TAPER DETAILS (BD-32)
301	FREEWAY ENTRANCE AND EXIIT RAMP CLOSURE DETAILS (TC-08)
303	FREEWAY SINGLE AND MULTI-LANE WEAVE (TC-09)
304	TYPICAL APPLICATIONS RAISED REFLECTIVE PAVEMENT MARKERS (SNOW PLOW RESISTANT) (TC-11)
305	MULTI-LANE FREEWAY PAVEMENT MARKING (TC-12)
306	DISTRICT ONE TYPICAL PAVEMENT MARKINGS (TC-13)
307	TRAFFIC CONTROL AND PROTECTION AT TURN BAYS (TO REMAIN OPEN TO TRAFFIC) (TC-14)
308	PAVEMENT MARKING LETTERS AND SYMBOLS FOR TRAFFIC STAGING (TC-16)
309	TRAFFIC CONTROL DETAILS FOR FREEWAY SHOULDER CLOSURES AND PARTIAL RAMP CLOSURES (TC-17)
310	SIGNING FOR FLAGGING OPERATIONS AT WORK ZONE OPENINGS (TC-18)
311	TRAFFIC CONTROL DETAILS FOR FREEWAY CENTER LANE CLOSURE SHOULDER LANE (TC-25)
312	DISTRICT 1 DETECTOR LOOP INSTALLATION DETAILS FOR ROADWAY RESURFACING (TS-07)
313-314	TOLLWAY SIGNING

STATE STANDARDS

000001-05	STANDARD SYMBOLS, ABBREVIATIONS, AND PATTERNS
442201-03	CLASS C AND D PATCHES
482011-03	HMA SHLD. STRIPS/SHLDS. WITH RESURFACING OR WIDENING AND RESURFACING PROJECTS
602001-01	CATCH BASIN TYPE A
604036-02	GRATE TYPE 8
606401-01	PAVED DITCH
635006-03	REFLECTOR AND TERMINAL MARKER PLACEMENT
642001-01	SHOULDER RUMBLE STRIPS
664001-02	CHAIN LINK FENCE
701101-02	OFF-ROAD OPERATIONS, MULTILANE, 15' TO 24" FROM PAVEMENT EDGE
701106-02	OFF-ROAD OPERATIONS, MULTILANE, MORE THAN 15' (4.5 M) AWAY
701400-04	APPROACH TO LANE CLOSURE, FREEWAY/ EXPRESSWAY
701401-05	LANE CLOSURE FREEWAY/ EXPRESSWAY
701411-06	LANE CLOSURE, MULTILANE, AT ENTRANCE OR EXIT RAMP, FOR SPEEDS ≥ 45 MPH
701426-03	LANE CLOSURE, MULTILANE, INTERMITTENT OR MOVING OPERATION, FOR SPEEDS ≥ 45 MPH
701446-01	TWO LANE CLOSURE FREEWAY/ EXPRESSWAY
701601-06	URBAN LANE CLOSURE, MULTILANE, 1W OR 2W WITH NONTRAVERSABLE MEDIAN
701701-06	URBAN LANE CLOSURE MULTILANE INTERSECTION
701901-01	TRAFFIC CONTROL DEVICES
704001-06	TEMPORARY CONCRETE BARRIER
720011-01	METAL POSTS FOR SIGNS, MARKERS AND DELINEATORS
728001-01	TELESCOPING STEEL SIGN SUPPORT
729001-01	APPLICATIONS OF TYPES A AND B METAL POSTS (FOR SIGNS AND MARKERS)

GENERAL NOTES:

BEFORE STARTING ANY EXCAVATION, THE CONTRACTOR SHALL CALL "JULIE" AT 800-892-0123 OR 811 FOR FIELD LOCATIONS OF BURIED ELECTRIC, TELEPHONE AND GAS FACILITIES. (48 HOUR NOTIFICATION IS REQUIRED)

THE CONTRACTOR SHALL COORDINATE CONSTRUCTION ACTIVITIES WITH UTILITY COMPANIES, THE CITY OF ROLLING MEADOWS, AND THE VILLAGES OF ARLINGTON HEIGHTS, PALATINE, & SCHAUMBURG.

THE CONTRACTOR WILL NOT BE ALLOWED TO SET UP A YARD OR FIELD OFFICE ON STATE PROPERTY WITHOUT WRITTEN PERMISSION FROM THE DEPARTMENT.

ALL HOT-MIX ASPHALT PAVEMENT PATCHING SHALL BE CLASS D.

BUTT JOINTS WILL BE INSTALLED AT THE ENDS OF ALL RESURFACING (WHERE RESURFACING MEETS EXISTING PAVEMENT), IN ACCORDANCE WITH THE "BUTT JOINT AND HMA TAPER DETAILS" SHEET INCLUDED IN THE PLANS, UNLESS OTHERWISE SPECIFIED.

WHEN MILLED PAVEMENT IS OPEN TO TRAFFIC THE MAXIMUM GRADE DIFFERENTIAL BETWEEN PASSES OF THE MILLING MACHINE SHALL NOT EXCEED 1 1/2 INCHES (40MM) WHERE THE SPEED LIMIT IS 45 MPH (80KM/H) OR LESS AND 1 INCH (25 MM) WHERE THE SPEED LIMIT IS GREATER THAN 45 MPH (80 KM/H), WITH WRITTEN APPROVAL FROM THE ENGINEER, A MAXIMUM GRADE DIFFERENTIAL OF 3 INCHES (75 MM) MAY BE ALLOWED IF THE EDGE OF THE MILLING IS SLOPED A MINIMUM 1:3 (V:H).

10 FEET (3 METER) TRANSITION SHALL BE USED TO MATCH PROPOSED CURB AND GUTTER TO EXISTING CURB AND GUTTERS IN THE FIELD, UNLESS OTHERWISE SHOWN. THE TRANSITION SHALL BE PAID FOR AT THE CONTRACT UNIT PRICE FOR THE PROPOSED ITEMS OF WORK SPECIFIED.

THE RESIDENT ENGINEER SHALL VERIFY THE LOCATIONS OF ALL EXISTING PAVEMENT MARKINGS PRIOR TO MILLING OR RESURFACING.

ALL PAVEMENT MARKINGS SHALL BE PLACED THROUGHOUT THE IMPROVEMENT ACCORDING TO DISTRICT 1 TYPICAL PAVEMENT MARKING.

TWO WEEKS PRIOR TO PLACING PERMANENT PAVEMENT MARKINGS, CONTACT WALLY CZARNY, AREA TRAFFIC FIELD ENGINEER AT (773) 685-4342.

RAISED REFLECTIVE PAVEMENT MARKERS SHALL BE PLACED THROUGHOUT THE IMPROVEMENT ACCORDING TO THE DISTRICT STANDARDS AS NOTED IN THE DETAIL.

THE UNIT WEIGHT (CONVERSION FACTOR) QUOTED IS FOR THE ESTIMATING PLAN QUANTITIES ONLY. ACTUAL QUANTITIES TO FULFILL CONTRACT REQUIREMENTS WILL BE DETERMINED BASED ON UNIT WEIGHT OF APPROVED MIX DESIGN, PLAN DIMENSIONS, AND DENSITY LIMITATIONS. MAXIMUM PAYMENT WILL BE COMPUTED BASED ON WEIGHT AVERAGE DENSITIES OF THE IN-PLACE MIXTURE.

THE RESIDENT ENGINEER SHALL CONTACT THE TRAFFIC CONTROL SUPERVISOR AT (847) 705-4470 A MINIMUM OF 72 HOURS PRIOR TO THE PLACEMENT OF ANY TEMPORARY TRAFFIC CONTROL DEVICES.

FILE NAME =	USER NAME = obreuah	DESIGNED -	REVISED -	STATE OF ILLINOIS DEPARTMENT OF TRANSPORTATION	I-290 / ILL 53 FROM US 12 TO ILL 72 INDEX OF SHEETS STATE STANDARDS AND GENERAL NOTES	F.A.T. RTE.	SECTION	COUNTY	TOTAL SHEETS	SHEET NO.	
ct:\pwork\PWIDOT\ABREUAH\0166688\010310\shp-plan.dgn	10-shp-plan.dgn	DRAWN -	REVISED -			290	(531-3.1, 0305-302 K) RS-5	COOK	314	2	
PLOT SCALE = 50,0000 ' / IN.		CHECKED -	REVISED -			SCALE: 1" = 50'		SHEET NO. OF SHEETS STA. TO STA.		CONTRACT NO. 60138	
PLOT DATE = 2/11/2018		DATE -	REVISED -			FED. ROAD DIST. NO. 1 ILLINOIS FED. AID PROJECT					

Rev.

Existing Structure: S.N. 016-0970 built in 1964 as F.A. Route 61, Section 531-3HB at Station 329+18.98. Structure consists of four span continuous wide flange beam bridge with a 13°24'15" right ahead skew, 205'-0" back-to-back abutments along local tangent, varying deck width of 69'-3³/₄" to 72'-11⁷/₈", multi-column piers, and pile bent abutments. In 1971, the deck was patched and a bituminous overlay was placed on the structure. In 1991, the expansion joints and parapets were reconstructed, along with deck patching and overlay replacement with microsilica concrete. In 2000, the abutment bearings were replaced with elastomeric.

STATE OF ILLINOIS
DEPARTMENT OF TRANSPORTATION

GENERAL NOTES

Plan dimension and details relative to existing plans are subject to nominal construction variations. The Contractor shall field verify existing dimensions and details affecting new construction and make necessary approved adjustments prior to construction or ordering of materials. Such variations shall not be cause for additional compensation for a change in scope of the work, however, the Contractor will be paid for the quantity actually furnished at the unit price bid for the work.

Reinforcement bars shall conform to the requirements of ASTM A 706 Gr 60. See Special Provisions.

See roadway plans for maintenance of traffic details.

INDEX OF SHEETS

1. General Plan and Elevation
2. Deck Slab Repair
3. Parapet Repair
4. Abutment Repair
5. Pier 1 Repair
6. Pier 2 Repair
7. Pier 3 Repair
8. Slopewall Repair

SCOPE OF WORK

1. Repair Deck Slab
2. Apply Concrete Sealer to top of deck surface and top and inside vertical face of parapets
3. Replace P.J.S. at expansion joint with Silicone Joint Sealer
4. Clean and Reseal Pavement Relief Joints
5. Repair Parapet Concrete
6. Repair Substructure Concrete
7. Repair Slopewall Concrete

DESIGN STRESSES

FIELD UNITS (New Const.)

$f'_c = 3,500$ psi
 $f_y = 60,000$ psi (Reinforcement)

FIELD UNITS (Existing)

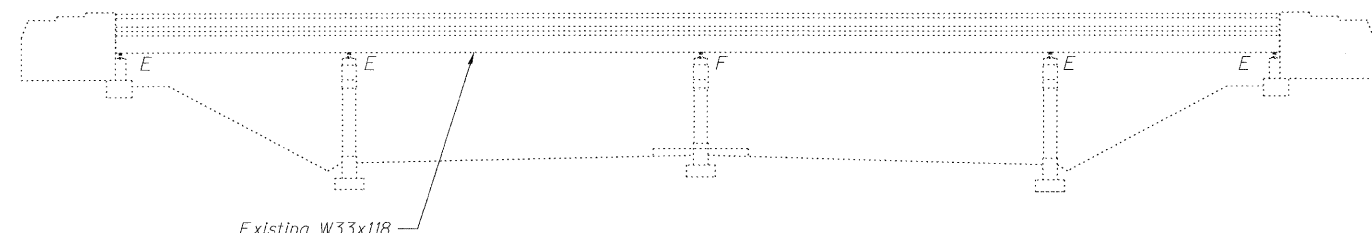
$f_c = 1,400$ psi (Superstructure & Substructure)
 $f_s = 20,000$ psi (Reinforcement & Structural Steel)

LOADING HS 20-44

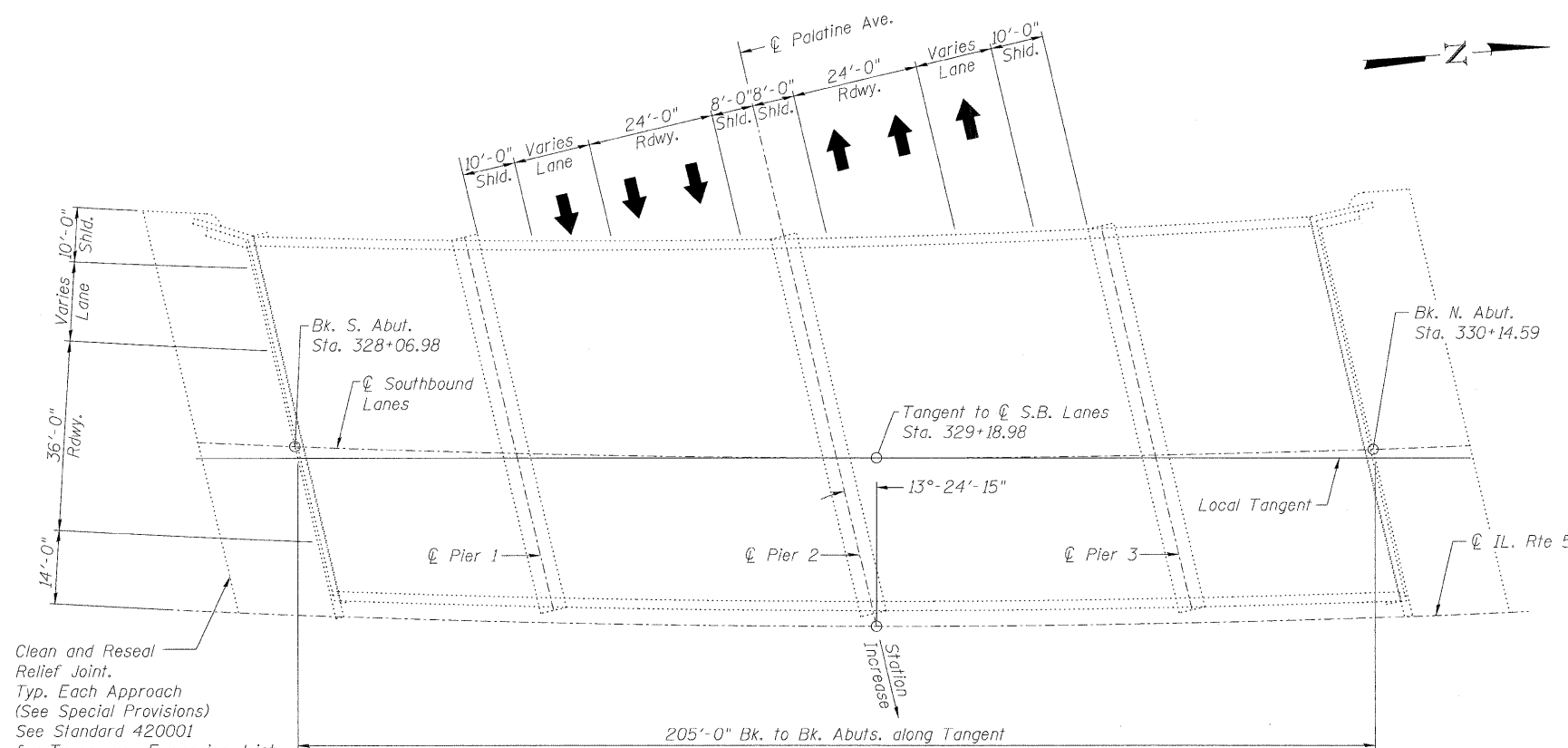
(Original Construction)

DESIGN SPECIFICATIONS

(New Construction)
2002 AASHTO "Standard Specifications for Highway Bridges"



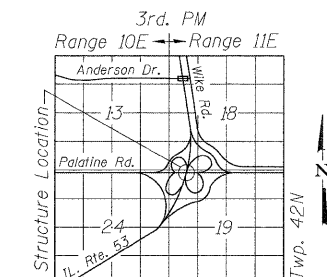
ELEVATION



PLAN

TOTAL BILL OF MATERIAL

ITEM	UNIT	SUPER	SUB	TOTAL
Slope Wall Removal	Sq. Yd.		233	233
Protective Shield	Sq. Yd.	905	4	909
Slope Wall 4 inch	Sq. Yd.		233	233
Concrete Sealer	Sq. Ft.	15491		15491
Silicone Joint Sealer, 3"	Foot	142		142
Structural Repair of Concrete (Depth Greater than 5 in.)	Sq. Ft.		112	112
Structural Repair of Concrete (Depth Equal to or Less than 5 in.)	Sq. Ft.	223	229	452
Deck Slab Repair (Full Depth, Type II)	Sq. Yd.	15.2		15.2
Clean and Reseal Relief Joint	Foot	162		162



LOCATION SKETCH

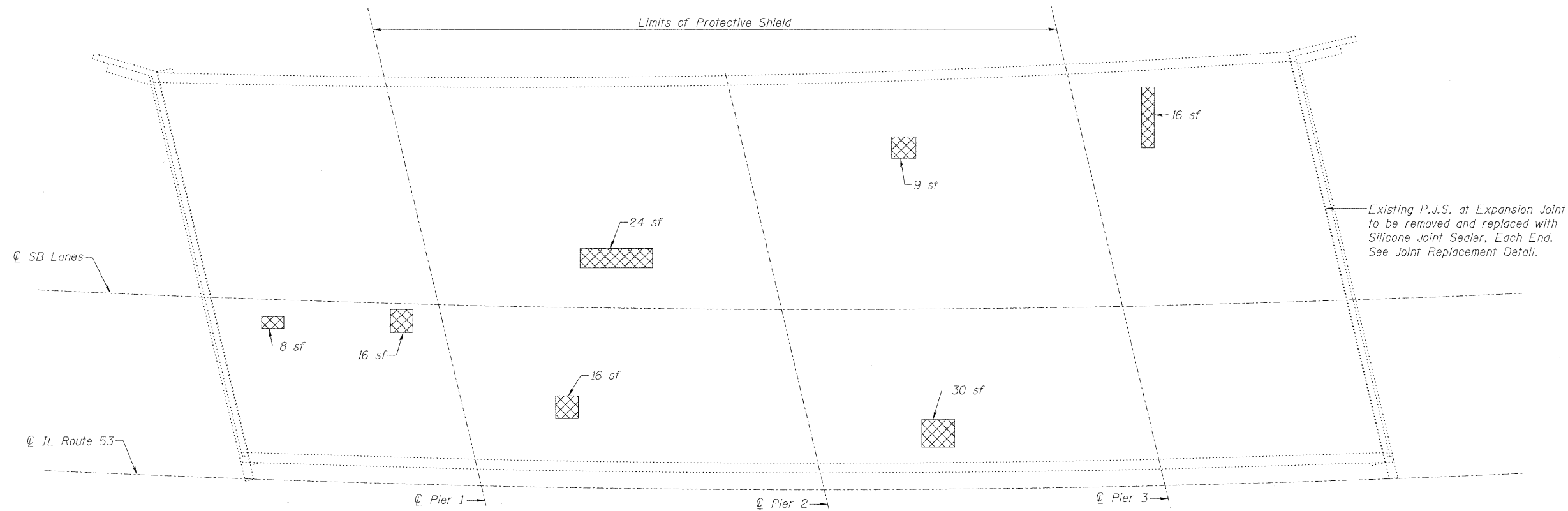


Michael J. Haley 2/8/10
Michael T. Haley Date
Licensed Structural Engineer
State of Illinois No. 81-5991
Expires 11/30/2010

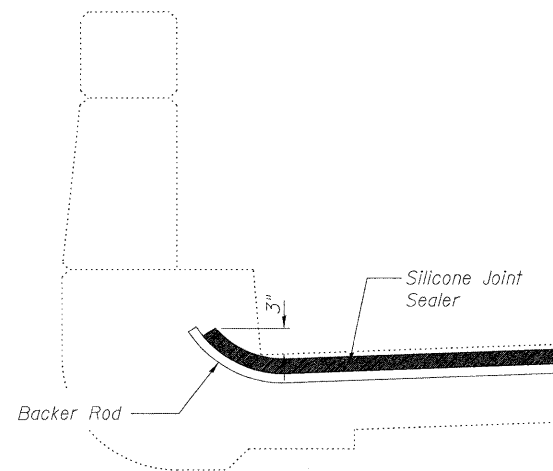
GENERAL PLAN AND ELEVATION
SB IL ROUTE 53 OVER PALATINE ROAD
F.A.P. 342 SEC (531-3.1,0305-302K)RS-5
COOK COUNTY
STATION 329+18.98
STRUCTURE NO. 016-0970

LIN ENGINEERING, LTD. Consulting Engineers Chatham, Illinois	SHEET NO. 1	F.A.I. RTE.	SECTION	COUNTY	TOTAL SHEETS	SHEET NO.
	8 SHEETS	290	(531-3.1,0305-302K)RS-5	COOK	314	176
Designed By: KHR Checked By: MTR Date: 12/2009	Drawn By: KHR File: 016-0970.dgn	FED. ROAD DIST. NO. _ ILLINOIS		FED. AID PROJECT		
				CONTRACT NO. 60138		

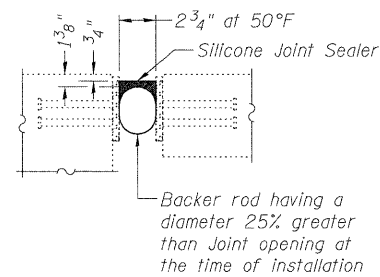
STATE OF ILLINOIS
DEPARTMENT OF TRANSPORTATION



PLAN



END OF SEAL TREATMENT



JOINT REPLACEMENT DETAIL
Dimensions at Rt L's to the Joint

BILL OF MATERIAL

Item	Unit	Total
Protective Shield	Sq. Yd.	905
Deck Slab Repair (Full Depth, Type II)	Sq. Yd.	15.2
Silicone Joint Sealer, 3"	Foot	142

Note:
Contractor shall verify that the type of concrete selected shall achieve required strength within the time allotted for construction. See Special Provisions, Deck Slab Repair (Special).

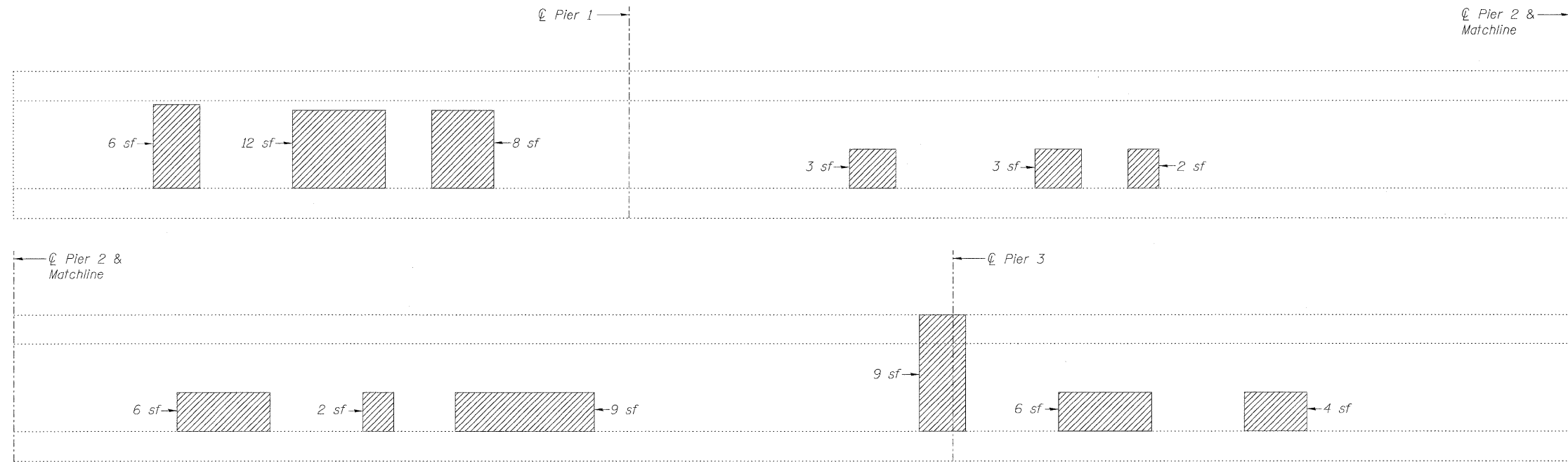
DECK SLAB REPAIR
STRUCTURE NO. 016-0970

LEGEND

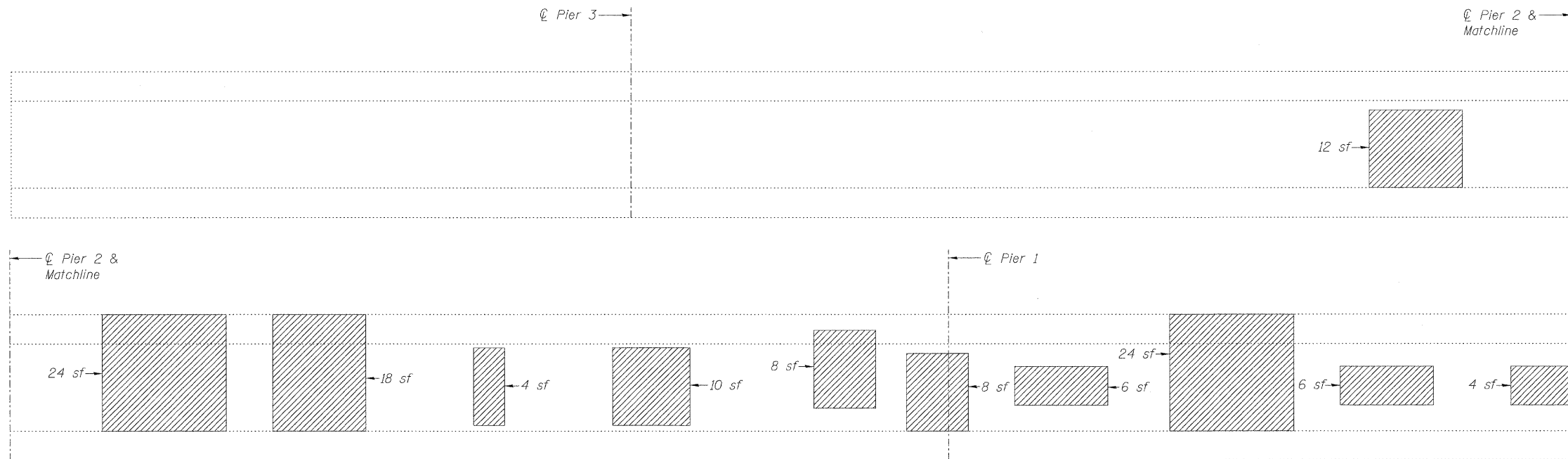
- Deck Slab Repair (Full Depth, Type II)
- sf Square Feet

Lin Engineering, Ltd. Consulting Engineers Chatham, Illinois	SHEET NO. 2	F.A.I. RTE.	SECTION	COUNTY	TOTAL SHEETS	SHEET NO.
	8 SHEETS	290	(531-3.1,0305-302K)RS-5	COOK	314	177
		CONTRACT NO. 60138				
		FED. ROAD DIST. NO. _ ILLINOIS FED. AID PROJECT				

STATE OF ILLINOIS
DEPARTMENT OF TRANSPORTATION



WEST PARAPET
(Inside Face Looking West)



EAST PARAPET
(Inside Face Looking East)

LEGEND

- Structural Repair of Concrete (Depth equal to or less than 5")
- sf Square Feet

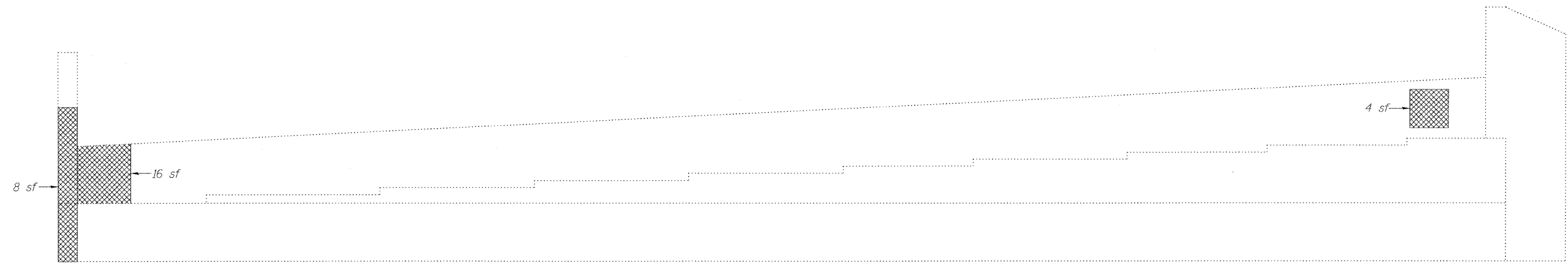
BILL OF MATERIAL

Item	Unit	Total
Structural Repair of Concrete (Depth equal to or less than 5 in.)	Sq. Ft.	223

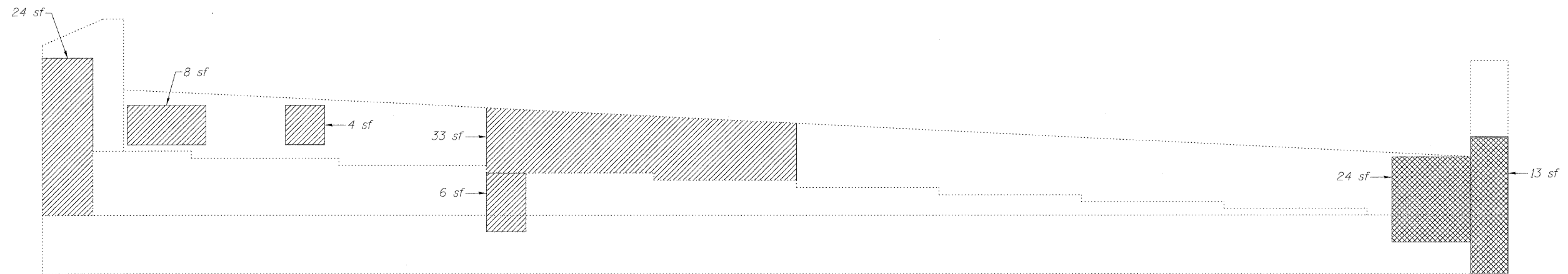
PARAPET REPAIR
STRUCTURE NO. 016-0970

LIN ENGINEERING, LTD. Consulting Engineers Chatham, Illinois	SHEET NO. 3	F.A.I. RTE.	SECTION	COUNTY	TOTAL SHEETS	SHEET NO.
	8 SHEETS	290	(531-3.1,0305-302K)RS-5	COOK	314	178
Designed By: KHH Date: 12/2009		Checked By: MTH File: 016-0970.dgn		FED. ROAD DIST. NO. _ ILLINOIS		FED. AID PROJECT
					CONTRACT NO. 60138	

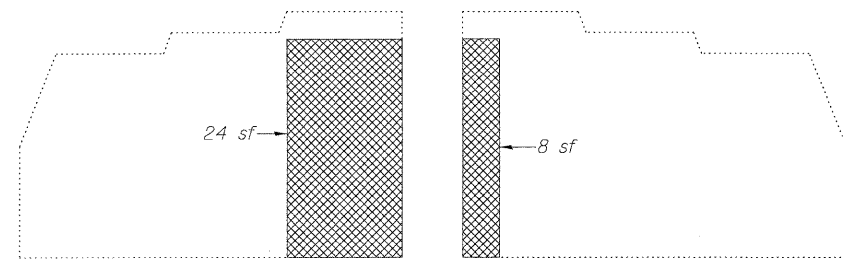
STATE OF ILLINOIS
DEPARTMENT OF TRANSPORTATION



NORTH ABUTMENT
(Looking North)



SOUTH ABUTMENT
(Looking South)



NORTHWEST WINGWALL

SOUTHWEST WINGWALL

LEGEND

- Structural Repair of Concrete (Depth greater than 5")
- Structural Repair of Concrete (Depth equal to or less than 5")
- sf Square Feet

Note:
Repair of the existing abutments shall include but may not be limited to the areas shown. The actual areas to be repaired will be determined by the Engineer at the time of construction.

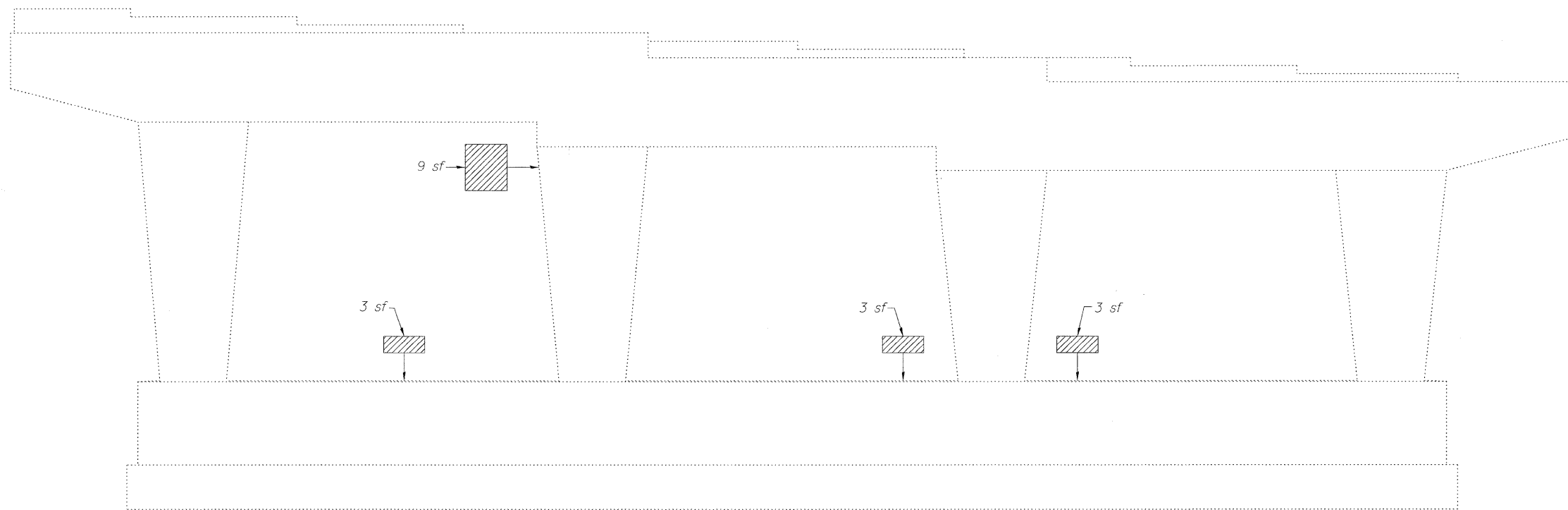
BILL OF MATERIAL

Item	Unit	Total
Structural Repair of Concrete (Depth greater than 5 in.)	Sq. Ft.	112
Structural Repair of Concrete (Depth equal to or less than 5 in.)	Sq. Ft.	86

**ABUTMENT REPAIR
STRUCTURE NO. 016-0970**

LIN ENGINEERING, LTD. Consulting Engineers Chatham, Illinois	SHEET NO. 4	F.A.I. RTE.	SECTION	COUNTY	TOTAL SHEETS	SHEET NO.
	8 SHEETS	290	(531-3.1,0305-302K)RS-5	COOK	314	174
		FED. ROAD DIST. NO. _		ILLINOIS		FED. AID PROJECT
					CONTRACT NO. 60138	

STATE OF ILLINOIS
DEPARTMENT OF TRANSPORTATION



PIER 1
(Looking South)


Note:
Repair of the existing pier shall include but may not be limited to the areas shown. The actual areas to be repaired will be determined by the Engineer at the time of construction.

BILL OF MATERIAL


Item	Unit	Total
Structural Repair of Concrete (Depth equal to or less than 5 in.)	Sq. Ft.	21

PIER 1 REPAIR
STRUCTURE NO. 016-0970

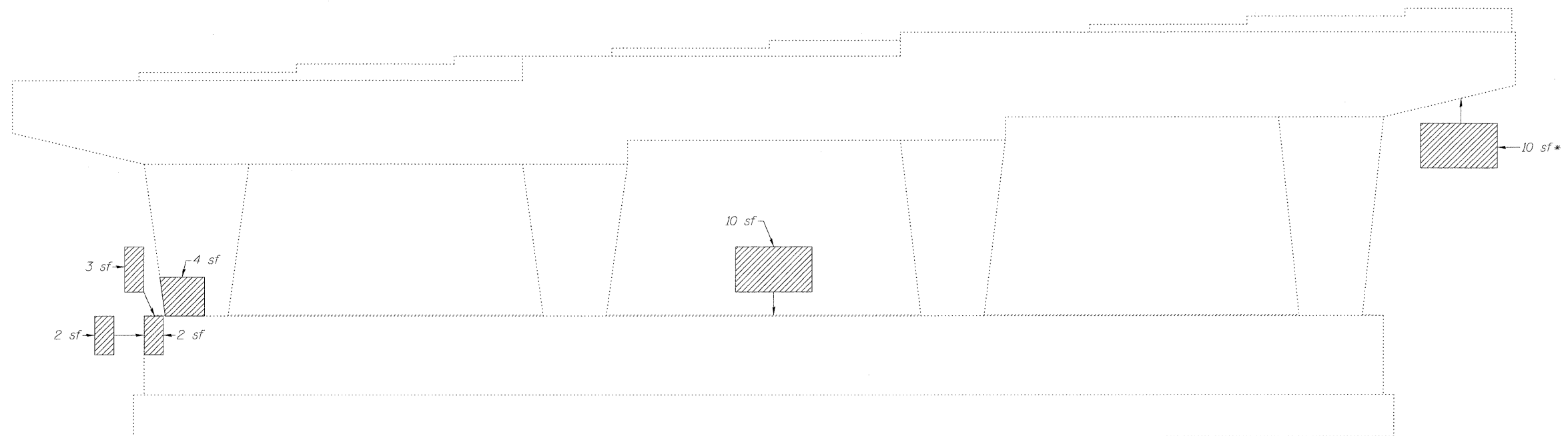
LEGEND

 Structural Repair of Concrete (Depth equal to or less than 5")

sf Square Feet

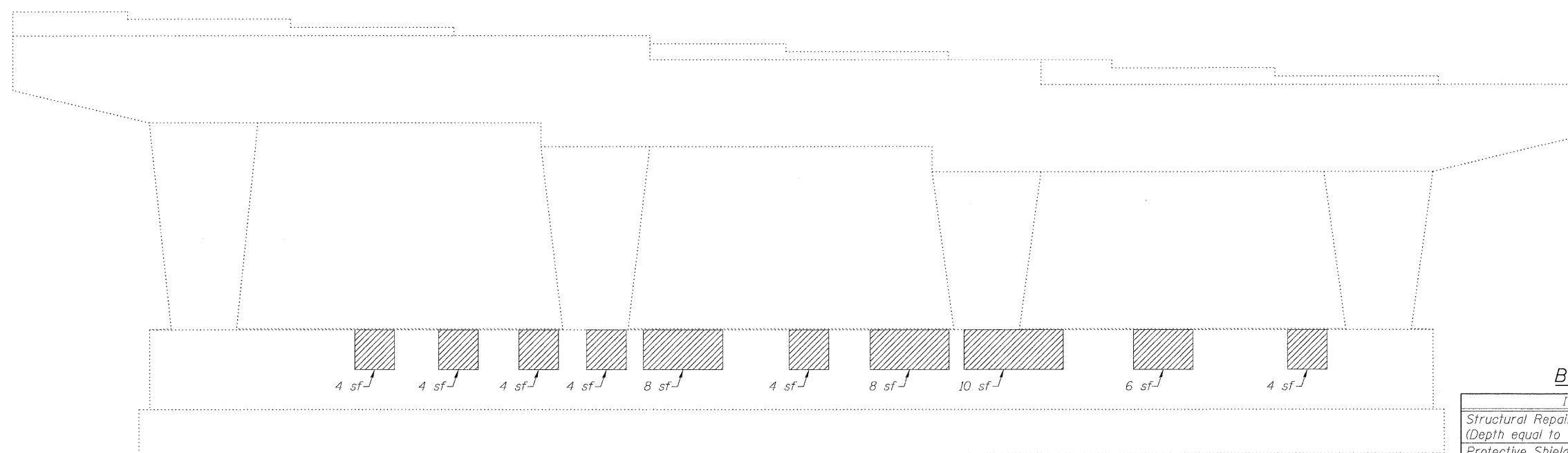
 LIN ENGINEERING, LTD. Consulting Engineers Chatham, Illinois	SHEET NO. 5	F.A.I. RTE.	SECTION	COUNTY	TOTAL SHEETS	SHEET NO.
	8 SHEETS	290	(531-3.1,0305-302K)RS-5	COOK	314	180
Designed By: KHH Checked By: MTH Date: 12/2009		Drawn By: KHH File: 016-0970.dgn		CONTRACT NO. 60138		
FED. ROAD DIST. NO. _ ILLINOIS FED. AID PROJECT						

STATE OF ILLINOIS
DEPARTMENT OF TRANSPORTATION



PIER 2
(Looking North)

*Requires Protective Shield




PIER 2
(Looking South)

BILL OF MATERIAL

Item	Unit	Total
Structural Repair of Concrete (Depth equal to or less than 5 in.)	Sq. Ft.	100
Protective Shield	Sq. Yd.	2

LEGEND

 Structural Repair of Concrete (Depth equal to or less than 5")
sf Square Feet

Note:
Repair of the existing pier shall include but may not be limited to the areas shown. The actual areas to be repaired will be determined by the Engineer at the time of construction.

Lin Engineering, Ltd.
Consulting Engineers
Chatham, Illinois

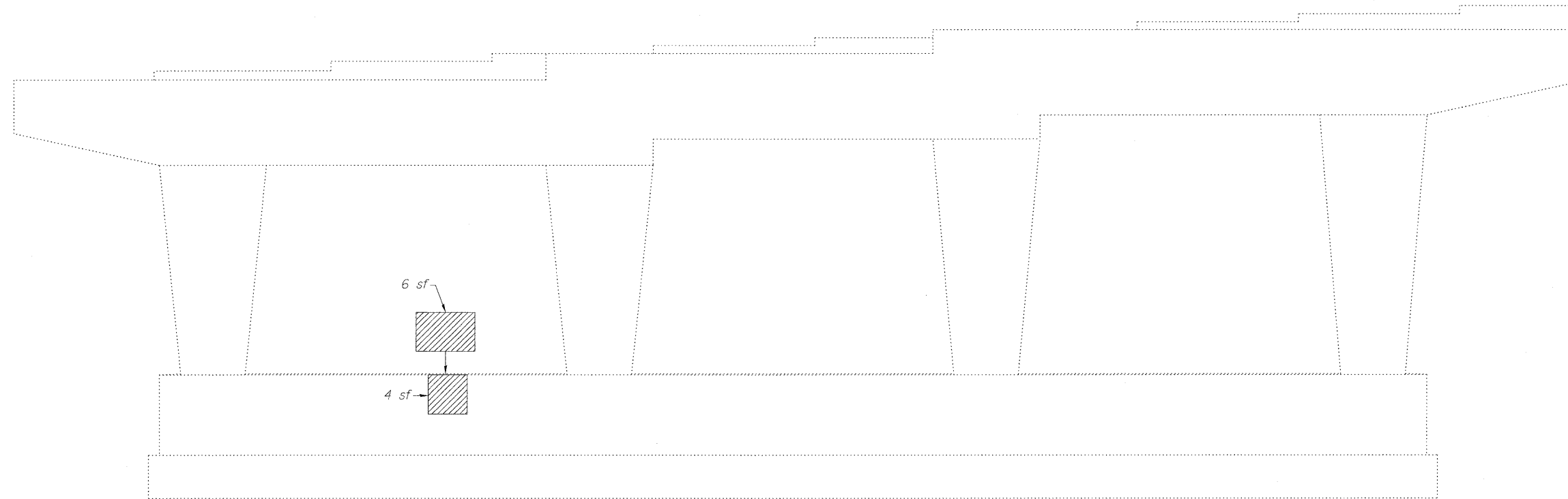
Designed By: KHH | Checked By: MTH | Drawn By: KHH
Date: 12/2009 | File: 016-0970.dgn

SHEET NO. 6
8 SHEETS

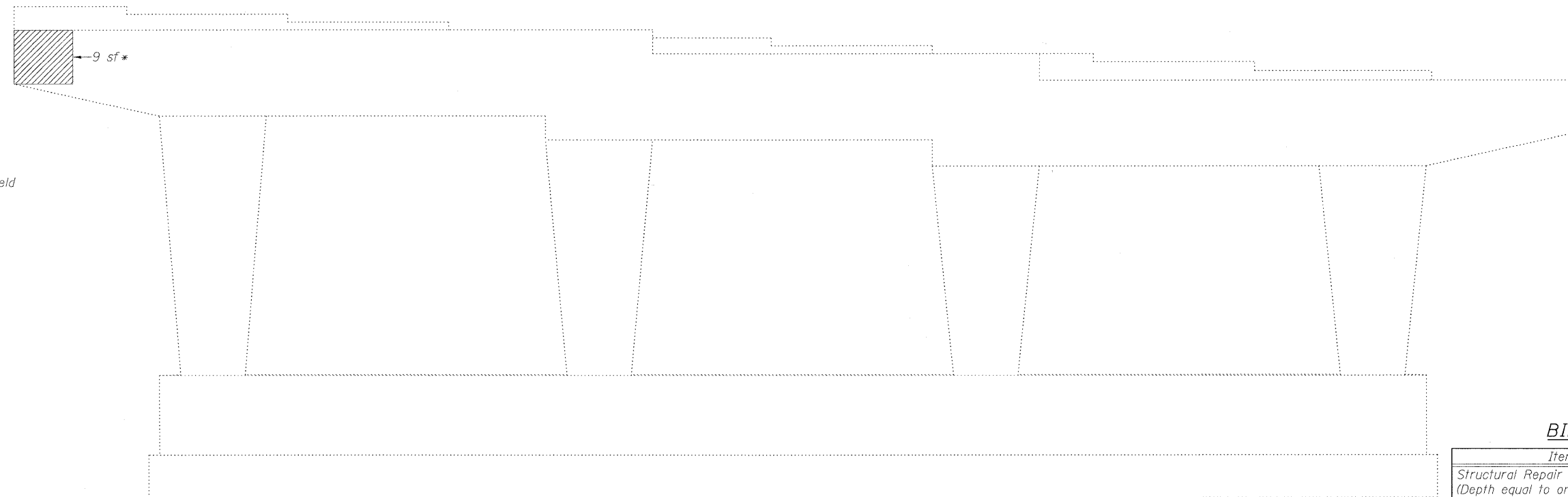
F.A.I. RTE.	SECTION	COUNTY	TOTAL SHEETS	SHEET NO.
290	(531-3.1,0305-302K)RS-5	COOK	314	181
FED. ROAD DIST. NO. _ ILLINOIS FED. AID PROJECT			CONTRACT NO. 60138	

PIER 2 REPAIR
STRUCTURE NO. 016-0970

STATE OF ILLINOIS
DEPARTMENT OF TRANSPORTATION



PIER 3
(Looking North)




*Requires Protective Shield

BILL OF MATERIAL

Item	Unit	Total
Structural Repair of Concrete (Depth equal to or less than 5 in.)	Sq. Ft.	22
Protective Shield	Sq. Yd.	2

PIER 3 REPAIR
STRUCTURE NO. 016-0970


LEGEND

 Structural Repair of Concrete (Depth equal to or less than 5")

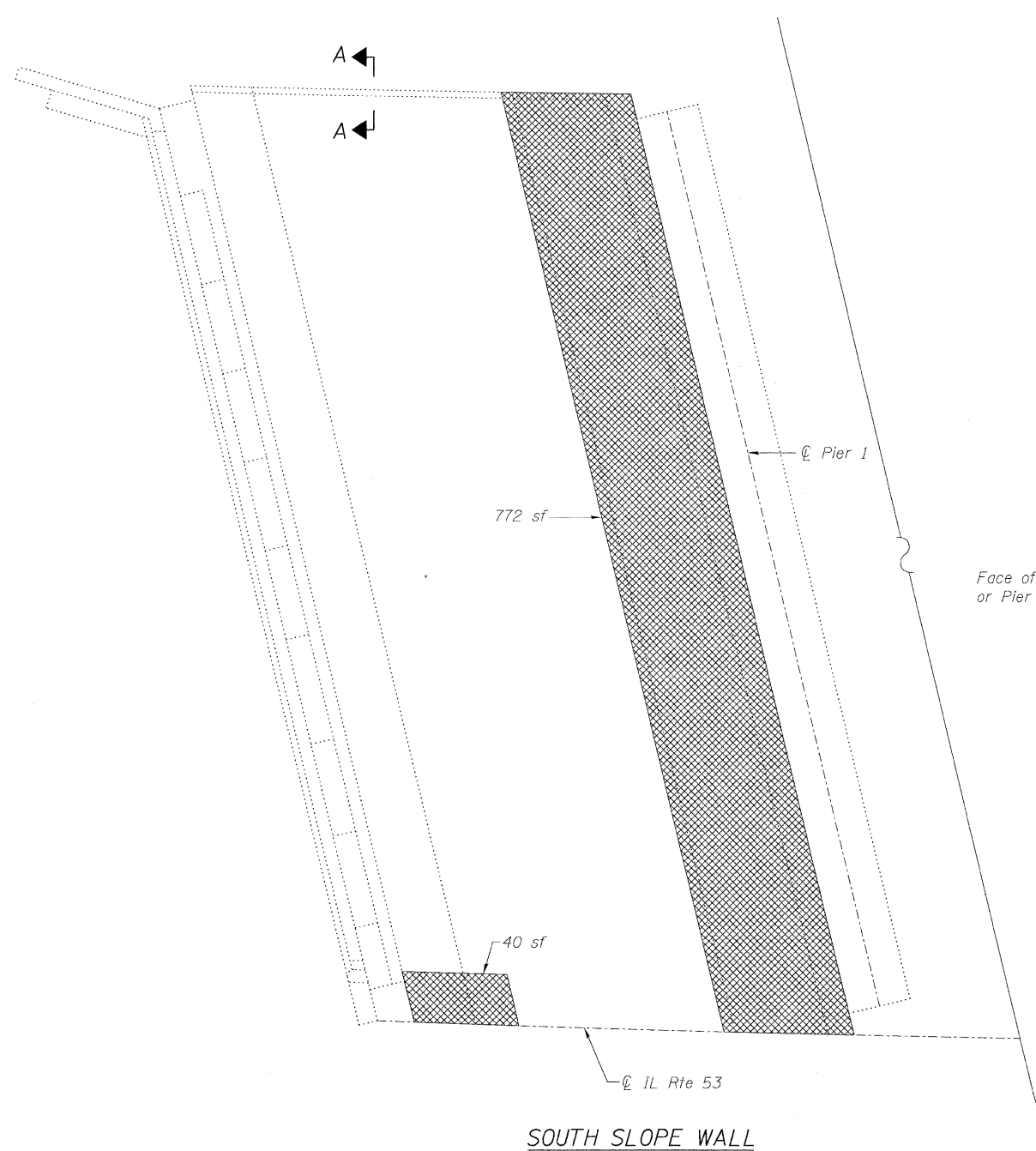
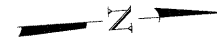
sf Square Feet

Note:
Repair of the existing pier shall include but may not be limited to the areas shown. The actual areas to be repaired will be determined by the Engineer at the time of construction.

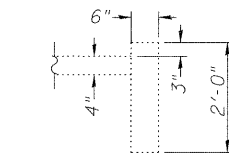
PIER 3
(Looking South)

 LIN ENGINEERING, LTD. Consulting Engineers Chatham, Illinois	SHEET NO. 7	F.A.I. RTE.	SECTION	COUNTY	TOTAL SHEETS	SHEET NO.
	8 SHEETS	290	(531-3.1,0305-302)RS-5	COOK	314	182
Designed By: KHH Checked By: MTH Drawn By: KHH Date: 12/2009 File: 016-0970.dgn		FED. ROAD DIST. NO. _ ILLINOIS FED. AID PROJECT				
					CONTRACT NO. 60138	

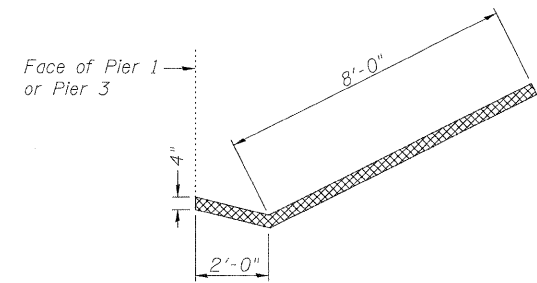
STATE OF ILLINOIS
DEPARTMENT OF TRANSPORTATION



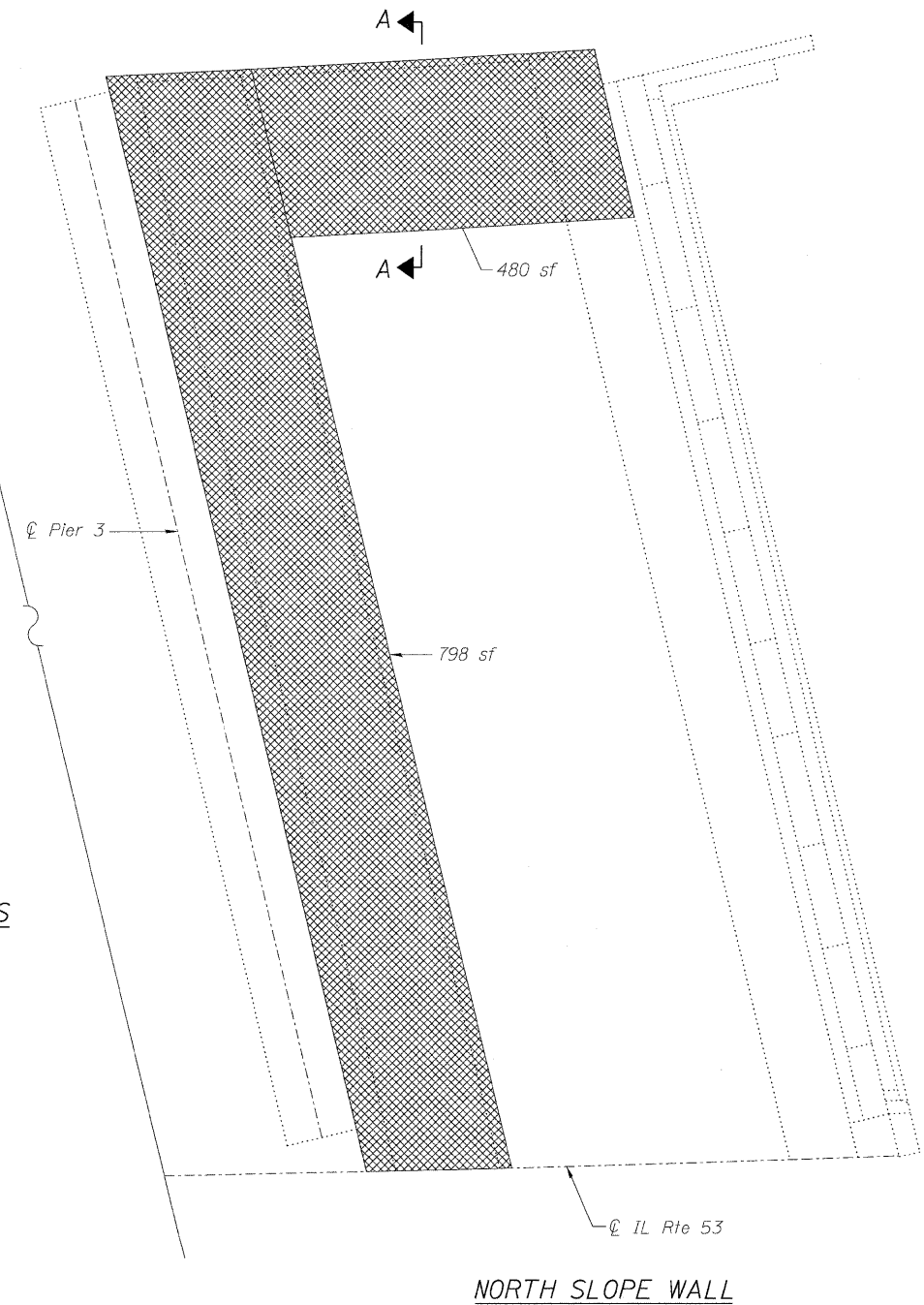
SOUTH SLOPE WALL



SECTION A-A



TOE OF SLOPE REMOVAL DETAILS



NORTH SLOPE WALL

Note:
Sloped wall shall be reinforced with welded wire fabric, 6" x 6" - W4.0 x W4.0, weighing 58 lbs. per 100 sq. ft.
Existing reinforcement shall be cleaned and incorporated into the new construction. Cost included with Slope Wall Removal.
Existing and new welded wire fabric must be lapped at least 6".
Repair of the existing slope walls shall include but may not be limited to the areas shown. The actual areas to be repaired will be determined by the Engineer at the time of construction.

LEGEND

Remove and Replace Slope Wall

sf Square Feet

BILL OF MATERIAL

Item	Unit	Total
Slope Wall Removal	Sq. Yd.	233
Slope Wall 4 inch	Sq. Yd.	233

**SLOPE WALL REPAIR
STRUCTURE NO. 016-0970**

 LIN ENGINEERING, LTD. Consulting Engineers Chatham, Illinois	SHEET NO. 8	F.A.I. RTE.	SECTION	COUNTY	TOTAL SHEETS	SHEET NO.
	8 SHEETS	290	(531-3.1,0305-302K)RS-5	COOK	314	183
Designed By: KMH Date: 12/2009		Checked By: MTH File: 016-0970.dgn		FED. ROAD DIST. NO. _ ILLINOIS FED. AID PROJECT		CONTRACT NO. 60138