

FOR INDEX OF SHEETS, SEE SHEET NO. 2

1. ILL. RTE. 53 (N.B.) OVER ILL. RTE. 62 SN-016-0378  
INCLUDES ONE 4 SPAN CONTINUOUS R.C. SLAB STRUCTURE WITH STEEL GIRDERS ON CONCRETE PIERS AND ABUTMENTS AT STA. 119+77.27  
2 SPANS AT 41'-3", 1 AT 38'-2" AND 1 AT 36'-8".
2. ILL. RTE. 53 (S.B.) OVER ILL. RTE. 62 SN-016-2133  
INCLUDES ONE 4 SPAN CONTINUOUS R.C. SLAB STRUCTURE WITH STEEL GIRDERS ON CONCRETE PIERS AND ABUTMENTS AT STA. 119+77.27  
2 SPANS AT 41'-3", 1 AT 38'-2" AND 1 AT 36'-8".
3. ILL. RTE. 53 OVER SALT CREEK SN-016-0377  
INCLUDES ONE 63'-3" SPAN CONTINUOUS R.C. SLAB STRUCTURE WITH PRESTRESSED CONCRETE BEAMS ON CONCRETE ABUTMENTS AT STA. 142+20
4. ILL. RTE. 53 (N.B.) OVER KIRCHOFF RD. SN-016-0376  
INCLUDES ONE 3 SPAN CONTINUOUS R.C. SLAB STRUCTURE WITH STEEL GIRDERS ON CONCRETE PIERS AND ABUTMENTS AT STA. 193+08.37  
2 SPANS AT 42'-9" AND 1 AT 110'-3".
5. ILL. RTE. 53 (S.B.) OVER KIRCHOFF RD. SN-016-1121  
INCLUDES ONE 3 SPAN CONTINUOUS R.C. SLAB STRUCTURE WITH STEEL GIRDERS ON CONCRETE PIERS AND ABUTMENTS AT STA. 193+08.37  
2 SPANS AT 42'-9" AND 1 AT 110'-3".
6. ILL. RTE. 53 (N.B.) OVER INDUSTRIAL AVE. SN-016-0375  
INCLUDES ONE 3 SPAN CONTINUOUS R.C. SLAB STRUCTURE WITH STEEL GIRDERS ON CONCRETE PIERS AND ABUTMENTS AT STA. 243+49.94  
2 SPANS AT 45'-2" AND 1 AT 59'-2".
7. ILL. RTE. 53 (S.B.) OVER INDUSTRIAL AVE. SN-016-1120  
INCLUDES ONE 3 SPAN CONTINUOUS R.C. SLAB STRUCTURE WITH STEEL GIRDERS ON CONCRETE PIERS AND ABUTMENTS AT STA. 243+49.94  
2 SPANS AT 45'-2" AND 1 AT 59'-2".

**STATE OF ILLINOIS**  
**DEPARTMENT OF TRANSPORTATION**  
**DIVISION OF HIGHWAYS**  
**PLANS FOR PROPOSED**  
**FEDERAL AID HIGHWAY**

SCALES  
PLAN  
PROFILE HORIZ.  
PROFILE VERT.  
CROSS SECTIONS

**F.A. 342 (ILL. RTE. 53)**  
**SECTION 531(1&2)RS-1(89) & 1989-107BR**  
**ILL. RTE. 62 TO U.S. RTE. 14**  
**RESURFACING AND BRIDGE DECK REHABILITATION**  
**COOK COUNTY**  
**C-91-255-90**

FAP RTE	SECTION	COUNTY	TOTAL SHEET NO.
342		COOK	271
F.A. 342		SECTION	PROJECT
531(1&2)RS-1(89) & 1989-107BR			

D-91-475-89



DESIGN DESIGNATION  
9630(10) TRUNK 5.5(B-20)

STATE OF ILLINOIS  
DEPARTMENT OF TRANSPORTATION  
DIVISION OF HIGHWAYS

SUBMITTED January 2, 1991 BY [Signature] DISTRICT ENGINEER

EXAMINED Jan 25, 1991 BY [Signature] CHIEF ENGINEER

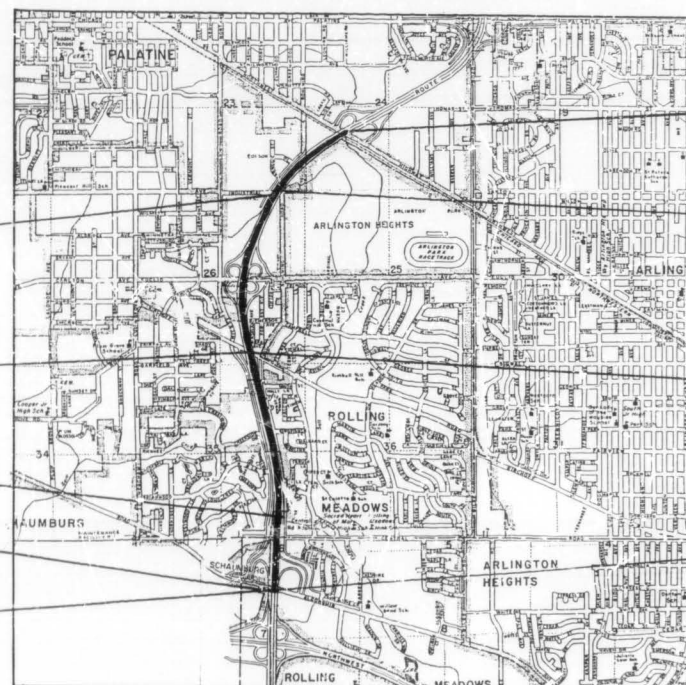
PASSED Jan 25, 1991 BY [Signature] DIVISION OF PLANS AND CONTRACTS

APPROVED Jan 25, 1991 BY [Signature] CHIEF OF BUREAU

CAPITAL PROJECTS DIVISION

PRINTED BY AUTHORITY OF THE  
STATE OF ILLINOIS

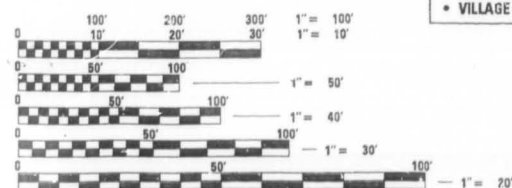
FOR J.U.L.I.E. INFORMATION CALL 1-800-892-0123



END OF IMPROVEMENT  
STA. 267 + 02

BEGINNING OF IMPROVEMENT  
STA. 116 + 00

PROJECT LOCATED IN:  
• VILLAGE OF ROLLING MEADOWS  
• VILLAGE OF ARLINGTON HEIGHTS

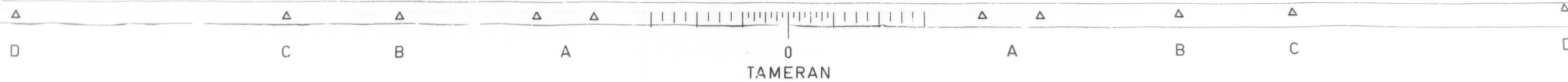


FULL SIZE PLANS HAVE BEEN PREPARED USING STANDARD ENGINEERING SCALES. REDUCED SIZED PLANS WILL NOT CONFORM TO STANDARD SCALES. IN MAKING MEASUREMENTS ON REDUCED PLANS, THE ABOVE SCALES MAY BE USED.

CONTRACT NO. 80797

NET LENGTH OF IMPROVEMENT = 15,102 LIN. FT. = 2.860 MI.  
GROSS LENGTH OF IMPROVEMENT = 15,102 LIN. FT. = 2.860 MI.

PLAN PREPARATION ENGINEER  
L. SORENSON, J.M. DEYONG (708) 705-4432



SECTION	COUNTY	TOTAL SHEETS	SHEET NO.
392	COOK	271	2
STA.	TO STA.		

\*531(162)RS-11(89)E1989-107 BR

INDEX OF SHEETS

SHEET NO.	DESCRIPTION		
1	TITLE SHEET	⊕ 158-179	SURVEILLANCE
2	INDEX OF SHEETS, STATE STANDARDS AND PLAN NOTES	180	LOG SYSTEM DETAIL
3-7	SUMMARY OF QUANTITIES	* 181-185	APPROACH SLAB AND SHOULDER PAVEMENT DETAILS
① 8-11	TYPICAL CROSS SECTIONS	186	BRIDGE APPROACH SHOULDER PAVEMENT
12-24	PLAN - MAINLINE	187-193	BRIDGE PLANS - ALGONQUIN ROAD (NB)
25-34	PLAN - RAMPS	△ ± 194-200	BRIDGE PLANS - ALGONQUIN ROAD (SB)
35-38	BARRIER WALL DETAILS	201-208	BRIDGE PLANS - SALT CREEK
39	IMPACT ATTENUATOR & CORRUGATED BITUMINOUS SHOULDER DETAILS	209-215	BRIDGE PLANS - KIRCHOFF ROAD (NB)
40	EUCLID AVENUE RECONSTRUCTION PROFILE	216-222	BRIDGE PLANS - KIRCHOFF ROAD (SB)
41-48	BARRIER WALL PROFILE	223-228	BRIDGE PLANS - INDUSTRIAL AVENUE (NB)
49-61	DRAINAGE AND UTILITIES - MAINLINE	229-234	BRIDGE PLANS - INDUSTRIAL AVENUE (SB)
62-66	DRAINAGE AND UTILITIES - RAMPS	235	NEOPRENE JOINT DETAIL
67-68	CATCH BASIN AND INLET DETAILS	236	RETROFIT CONCRETE PARAPET DETAIL
69-77	TYPICAL CROSS SECTIONS - STAGING	237	BAR SPLICER DETAIL
78-92	SUGGESTED STAGES OF CONSTRUCTION	238-241	CROSS SECTIONS - UNDER EUCLID AVENUE
93	TEMPORARY INFORMATIONAL SIGNING - FOR STAGING	242-244	CROSS SECTIONS - COLLECTOR DISTRIBUTOR MEDIAN (NB)
94	TEMPORARY CONCRETE BARRIER WITH IMPACT ATTENUATOR	245-247	CROSS SECTIONS - COLLECTOR DISTRIBUTOR (SB)
95-97	LANE CLOSURES - FREEWAY STANDARDS	248-262	CROSS SECTIONS - CENTERLINE MEDIAN
98	RAMP CLOSURES - DETAIL	263-264	CROSS SECTIONS - DITCH REGRADING
99	TEMPORARY PAVEMENT MARKING - LETTERS AND SYMBOLS	265-271	DISTRICT DETAILS
100	TRAFFIC CONTROL - SIDEROADS, INTERSECTIONS, AND DRIVEWAYS	⊕ INCLUDES 169A * INCLUDES 181A ± INCLUDES 199A, 199B	
101-106	SIGN TRUSS PLAN AND DETAILS		
107	TEMPORARY INFORMATION SIGNING - SIGN TRUSS REMOVAL		
108-121	PAVEMENT MARKING		
122-148	TRAFFIC SIGNING STRUCTURES		
149-157	ELECTRICAL PLAN AND DETAILS		

LIST OF STATE STANDARDS

STANDARD #	DESCRIPTION
2149-11	DELINEATORS
2213-4	FRAME AND LIDS, TYPE 1
2225-9	REINFORCEMENT FOR CONTINUOUSLY REINFORCED P.C.C. PAVEMENT
2228-4	METAL END SECTION FOR PIPE CULVERTS
2230-16	STEEL PLATE BEAM GUARDRAIL
2233-12	36' CONTINUOUSLY REINFORCED P.C.C. PAVEMENT
2237-11	B.A.M. SHOULDER DETAILS - ADJACENT TO RIGID PAVEMENT
2298-8	TYPICAL APPLICATION OF TRAFFIC CONTROL DEVICES
2299-11	DESIGN OF TRAFFIC CONTROL DEVICES
2300-3	FLAGMAN TRAFFIC CONTROL SIGN
2307-6	TYPICAL APPLICATION OF TRAFFIC CONTROL DEVICES SHORT-TIME OPERATION, DAY OR NIGHT
2308-5	TYPICAL APPLICATION OF TRAFFIC CONTROL DEVICES RURAL, DAY OR NIGHT, MOVING OPERATIONS
2314-5	TYPICAL APPLICATION OF TRAFFIC CONTROL DEVICES MULTILANE DIV. AND UNDIV., RURAL, DAY OR NIGHT
2316-12	TYPICAL APPLICATION OF TRAFFIC CONTROL DEVICES MULTILANE DIV. AND UNDIV., RURAL, OVER ONE DAY
2323-11	PAVEMENT JOINTS
2324-7	BRIDGE APPROACH SHOULDER PAVEMENT
2326-3	TRAFFIC BARRIER TERMINAL, TYPE 10
2327-11	SUB-SURFACE DRAINS
2333-3	CONCRETE BARRIER
2336-4	TRAFFIC BARRIER TERMINAL, TYPE 1 AND 1A
2337-2	TRAFFIC BARRIER TERMINAL, TYPE 2
2338-2	TRAFFIC BARRIER TERMINAL, TYPE 3 & 3A
2340-4	TRAFFIC BARRIER TERMINAL, TYPE 5 & 5A
2341-3	TRAFFIC BARRIER TERMINAL, TYPE 6
2360-4	BRIDGE APPROACH PAVEMENT (50 FT.)
2362-3	CONCRETE HEADWALL FOR PIPE DRAINS
2381	TEMPORARY EROSION CONTROL SYSTEMS
2383-1	TEMPORARY CONCRETE BARRIER
2385	FRAME AND GRATE, TYPE 20
2386	FRAME AND GRATE, TYPE 21
2387	FRAMES AND GRATES, TYPE 22
2419	TYPICAL APPLICATION OF TRAFFIC CONTROL DEVICES MULTILANE DIVIDED AND UNDIVIDED RURAL, DAY OR NIGHT OPERATIONS
2425-1	CLASS A PATCHES
2427-1	CLASS C AND D PATCHES
U-2	TYPICAL APPLICATION OF TRAFFIC CONTROL DEVICES
U-4	TYPICAL APPLICATION OF TRAFFIC CONTROL DEVICES
2429	CONCRETE SHOULDERS

PLAN NOTES

BEFORE STARTING ANY EXCAVATION, THE CONTRACTOR SHALL CALL "JULIE" AT 800-892-0123 OR "DIGGER" (CHICAGO UTILITY ALERT NETWORK), (312)774-7000 FOR FIELD LOCATIONS OF BURIED ELECTRIC, TELEPHONE AND GAS FACILITIES. (48 HOURS NOTIFICATION IS REQUIRED).

THE CONTRACTOR SHALL COORDINATE CONSTRUCTION ACTIVITIES WITH UTILITY COMPANIES AND THE CITY OF CHICAGO.

THE CONTRACTOR WILL NOT BE ALLOWED TO SET UP A YARD OR FIELD OFFICE ON STATE PROPERTY WITHOUT WRITTEN PERMISSION FROM THE DEPARTMENT.

THE REMOVAL OF GUARDRAIL TERMINAL SECTIONS SHALL BE INCLUDED IN THE UNIT PRICE PER LINEAL FOOT FOR STEEL PLATE BEAM GUARD RAIL REMOVAL.

BARRICADES: THE CONTRACTOR SHALL PROVIDE AND INSTALL TWO (2) WEIGHTED SAND BAGS ON EACH TYPE I OR TYPE II BARRICADE USED. (ONE (1) WEIGHTED SAND BAG ACROSS EACH BOTTOM RAIL).

WHEN ARTIFICIAL LIGHTING IS UTILIZED IN NIGHT OPERATIONS THE CONTRACTOR SHALL EXERCISE THE UTMOST PRECAUTIONS IN PREVENTING ADVERSE VISIBILITY TO THE MOTORING PUBLIC AND ADJOINING RESIDENTIAL AREAS.

① INCLUDES 10A

ILLINOIS DEPARTMENT OF TRANSPORTATION  
INDEX OF SHEETS,  
PLAN NOTES  
AND  
STATE STANDARDS

REVISIONS	
NAME	DATE

SCALE: VERT.      DRAWN BY  
HORIZ.              CHECKED BY PV  
DATE

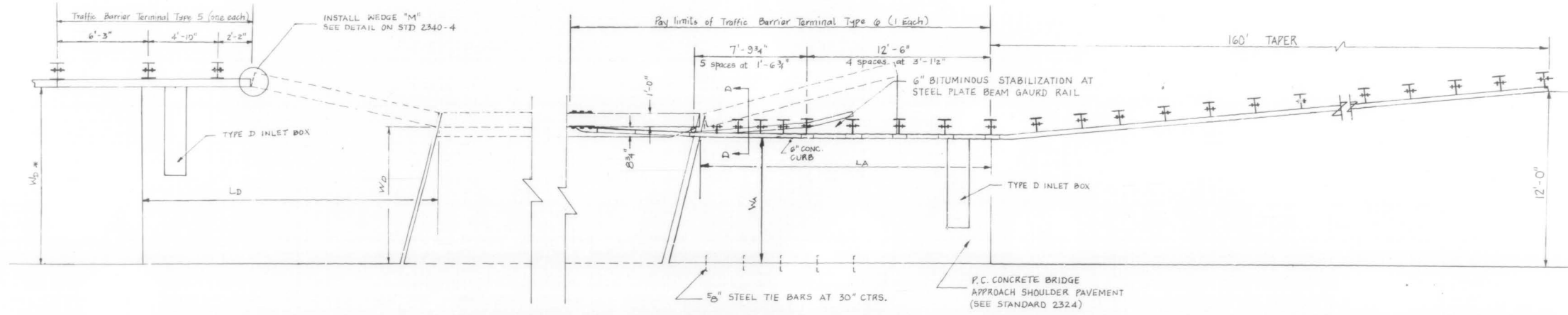
Rev 2-6-91

Rev



TAMERAN

DARCOBY

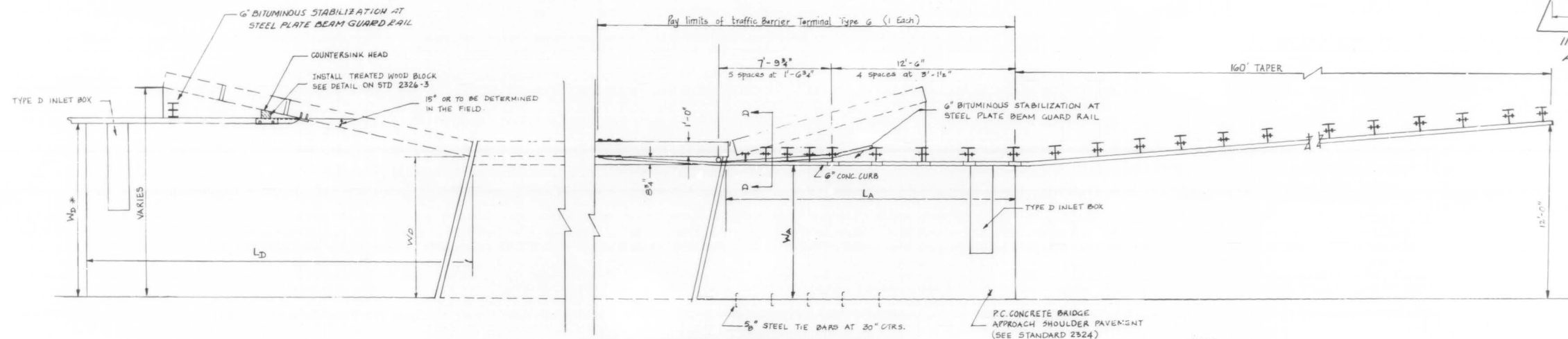
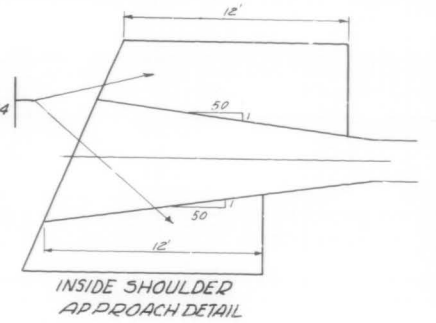


**OUTSIDE SHOULDER APPROACH DETAIL (TYPE 5)**

ANDERSON NB/SB      NORTHWEST SB  
 PALATINE SB      SALT CREEK NB/SB

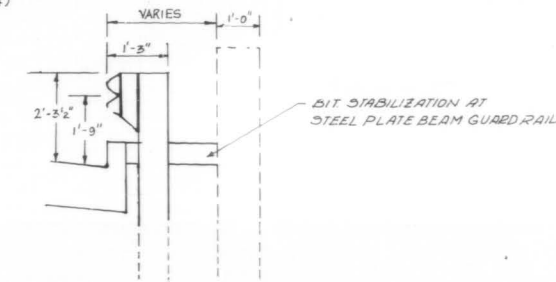
P.C. CONCRETE BRIDGE APPROACH SHOULDER PAVEMENT STANDARD 2324

NOTE:  
 TYPE D INLET BOX IS NOT REQUIRED



**OUTSIDE SHOULDER APPROACH DETAIL (TYPE 10)**

PALATINE NB      KIRCHHOFF NB/SB  
 NORTHWEST NB      ALGONQUIN NB/SB  
 INDUSTRIAL NB/SB



SECTION D-D

**NORTHBOUND**

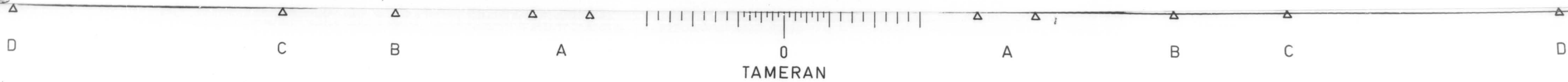
	W <sub>A</sub>	W <sub>D</sub>	L <sub>A</sub>	L <sub>D</sub>	W <sub>D</sub> #
ALGONQUIN RD.	9.3'	10.4'	19'-6 3/4"	15.0'	12.0'
SALT CREEK	9.3'	9.7'	19'-6 3/4"	12.1'	9.7'
KIRCHHOFF RD.	12.0'	12.8'	19'-6 3/4"	14.0'	12.8'
INDUSTRIAL AVE.	9.7'	11.1'	19'-6 3/4"	17.5'	12.0'
NORTHWEST HWY.	9.3'	10.75'	19'-6 3/4"	19.2'	12.0'
PALATINE RD.	8.3'	8.5'	19'-6 3/4"	19.1'	12.0'
ANDERSON	9.3'	10.3'	19'-6 3/4"	12.0'	10.3'

**SOUTHBOUND**

	W <sub>A</sub>	W <sub>D</sub>	L <sub>A</sub>	L <sub>D</sub>	W <sub>D</sub> #
ALGONQUIN RD.	9.3'	10.4'	19'-6 3/4"	15.2'	12.0'
SALT CREEK	9.3'	9.9'	19'-6 3/4"	12.0'	9.9'
KIRCHHOFF RD.	12.0'	12.2'	19'-6 3/4"	14.0'	12.2'
INDUSTRIAL AVE.	9.7'	12.9'	19'-6 3/4"	14.0'	12.0'
NORTHWEST HWY.	9.3'	10.1'	19'-6 3/4"	19.5'	11.8'
PALATINE RD.	5.6'	5.6'	19'-6 3/4"	19.2'	8.5'
ANDERSON	9.3'	10.2'	19'-6 3/4"	12.0'	10.2'

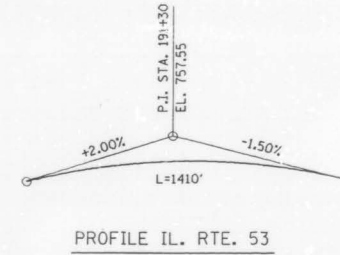
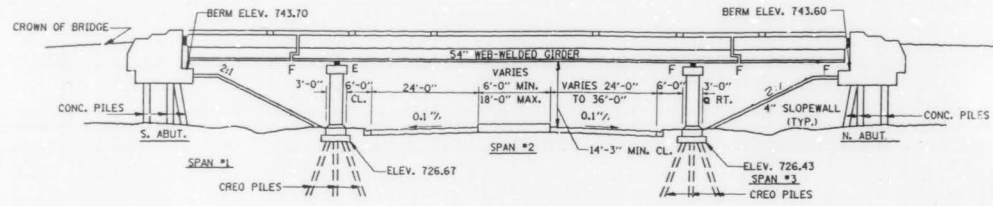
REVISIONS	
NAME	DATE

ILLINOIS DEPARTMENT OF TRANSPORTATION  
 ILLINOIS ROUTE-53  
 P.C. CONCRETE BRIDGE  
 APPROACH SHOULDER PAVT (SPECIAL)  
 SCALE: VERT.      DRAWN BY  
 HORIZ.              CHECKED BY  
 DATE



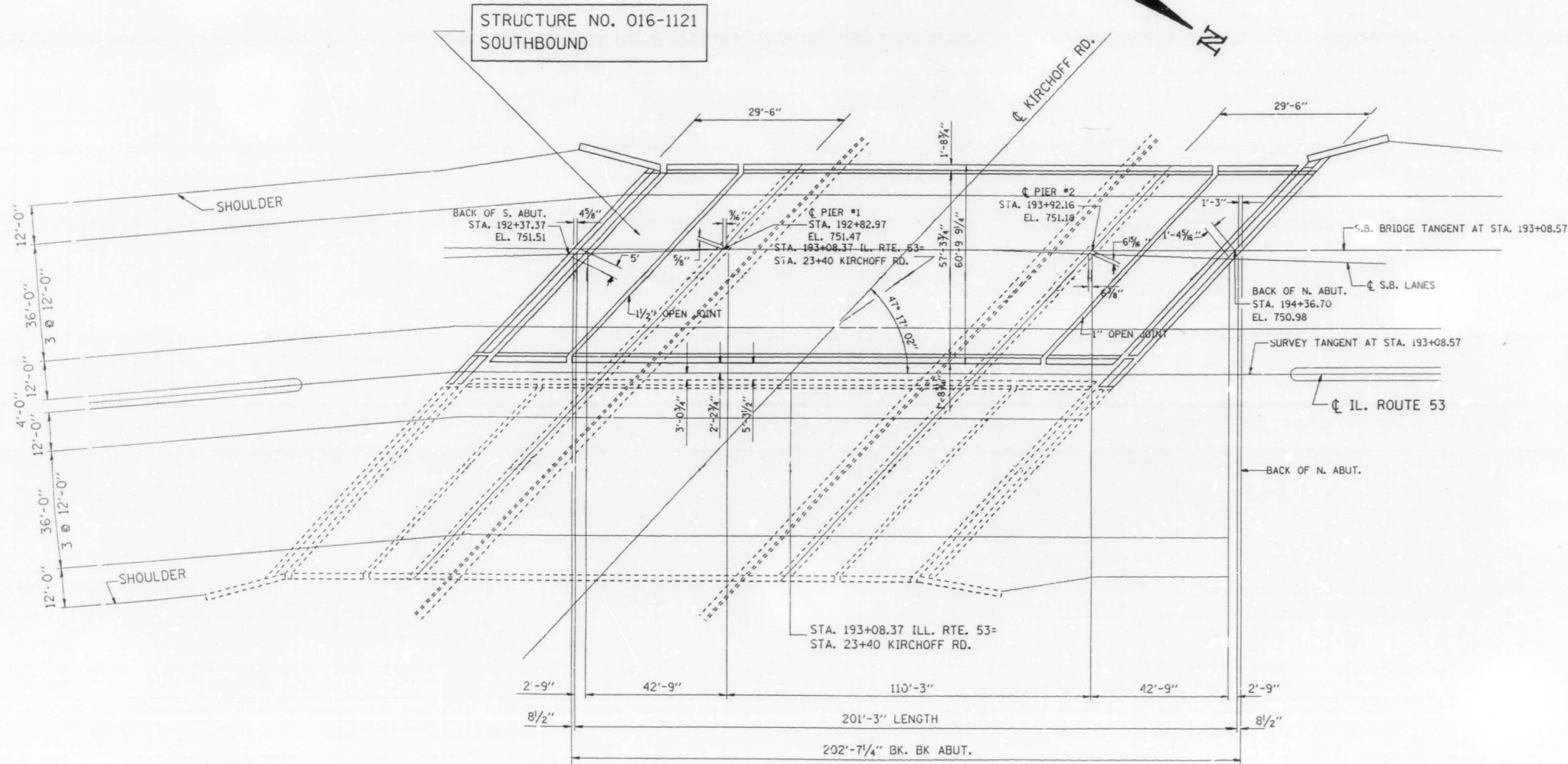
EXISTING BRIDGE DESCRIPTION  
 THE BRIDGE CONSIST OF A 3 SPAN CONTINUOUS WELDED PLATE GIRDER STRUCTURE,  
 HAVING 2 SPANS AT 42'-9" AND 1 SPAN AT 110'-3" THE 7-INCH THICK CONCRETE DECK  
 HAS A BITUMINOUS CONCRETE OVERLAY. THE STRUCTURE REST ON OPEN R.C. ABUTMENTS  
 AND R.C. PIERS

F. A. P. NO.	SECTION	COUNTY	TOTAL SHEETS	SHEET NO.
342	*	COOK	271	216
STA.	TO STA.			
FED. ROAD DIST. NO.	SLAB NO.	FED. AID PROJECT		
* 531(1) & 21RS-1(89) & 1989-107BR				
SHEET 1 OF 7				



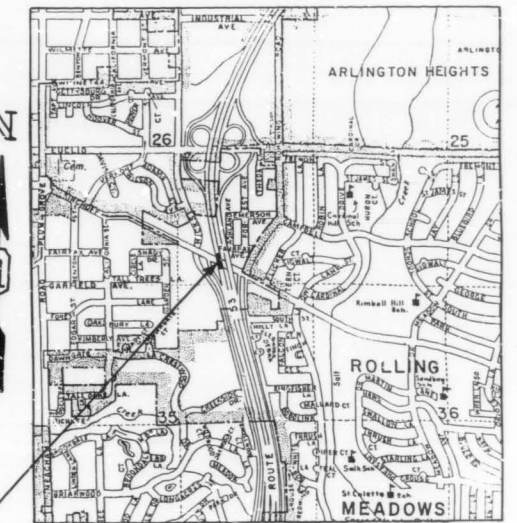
INDEX OF SHEETS

- 1) PLAN AND ELEVATIONS
- 2) GENERAL NOTES AND SUMMARY OF QUANTITIES
- 3) DECK DETAILS
- 4) DELAMTECT AND BOTTOM DECK SURVEY
- (5-6) JOIN RECONSTRUCTION DETAILS
- 7) STAGING CROSS SECTION



HORIZONTAL CURVE DATA

Δ = 77° 11' 38"
D = 0° 57' 17.8"
R = 6000'
T = 4789.21'
L = 8083.72'
E = 1677.02'
S.E. = .02 %



STRUCTURE NO. 016-1121  
 SOUTHBOUND

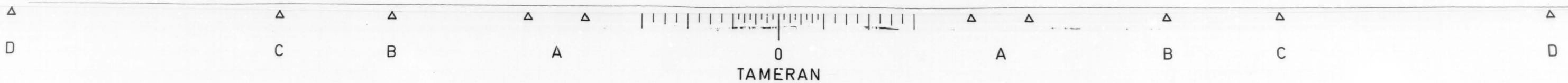
REVISIONS	
NAME	DATE

ILLINOIS DEPARTMENT OF TRANSPORTATION  
 IL. RTE. 53 @ KIRCHOFF RD. S.B.  
 BRIDGE REHABILITATION  
 STRUCTURE NO. 016-1121  
 PLAN & ELEVATION

SCALE: VERT. NONE  
 HORIZ. DATE 10/23/90  
 DRAWN BY  
 CHECKED BY

11-OCT-90 19:33:08 (CREATED)  
 27641104000117589F-3.00V.M  
 LEVELS = 35

VI--BR2



NOTES:

1. ~~The zinc-silicate and vinyl paint system shall be used for shop and field painting of Structural Steel except where otherwise noted. The color of the vinyl finish coat shall be Munsell No. 7.5G 4/8.~~
2. All structural steel shall be AASHTO M 222 except expansion joint plates and attached bars which shall be AASHTO M 183.
- 2A Deck Repair Method II shall be used for this structure (See Spec. Prov.)
3. Expansion joint plates and attached bars shall be shop painted with the zinc-silicate primer.  
~~AASHTO M 222 structural steel shall not be painted except, that for a distance of three times the depth of the beams or girders (but not exceeding 10 feet) each way from deck joints, the AASHTO M 222 structural steel shall be cleaned and given one coat of the zinc-silicate primer and a dark maroon vinyl finish coat. The color of the finish coats shall be Munsell No. 2.5 YR 3/4 reddish brown. Both coats may be applied in the shop with spot painting only in the field.~~
5. The structural steel bearing plates of the Elastomeric Bearing Assembly shall conform to the requirements of AASHTO M 223 Grade 50 (AASHTO M 222).
6. Reinforcement bars shall conform to the requirements of AASHTO M-31, M-42 or M-53 Grade 60.
7. Plan dimensions and details relative to existing structure have been taken from existing plans and are subject to nominal construction variations. It shall be the Contractor's responsibility to verify such dimensions and details in the field and make necessary approved adjustments prior to construction or ordering of materials. Such variations shall not be cause for additional compensation for a change in the scope of the work, however, the Contractor will be paid for the quantity actually furnished at the unit price bid for the work.
8. ~~All accessible end areas of steel beams, exposed top of steel beams, and diaphragms, and bearings designated by the Engineer for painting shall be cleaned by Method I. The three coat lead and chromate free alkyd paint system shall be applied over all cleaned areas, except the exposed top of steel beams to be embedded in concrete shall receive only one coat of the primer of this system. The color of the final finish coat shall be INTERSTATE GREEN. This work will be paid for in accordance with Article 109.04 of the Standard Specifications.~~

TOTAL BILL OF MATERIALS

ITEM	UNIT	TOTAL
BITUMINOUS CONCRETE REMOVAL (DECK)	SQ. YD.	1262
CONCRETE BRIDGE DECK SCARIFICATION, 1/2"	SQ. YD.	1262
DECK SLAB REPAIR (PARTIAL DEPTH)	SQ. YD.	80
DECK SLAB REPAIR (FULL DEPTH)	SQ. YD.	10
CONCRETE REMOVAL, SPECIAL	CU. YD.	41.0
HANDRAIL REMOVAL	LIN. FT.	398
NEOPRENE JOINT, 2"	LIN. FT.	163
REINFORCEMENT BARS, EPOXY COATED	POUND	7232
CLASS X CONCRETE SUPERSTRUCTURE	CU. YD.	48.4
MICROSILICIA CONCRETE BRIDGE DECK OVERLAY, 2 1/2"	SQ. YD.	1262
PROTECTIVE COAT	SQ. YD.	1513
PROTECTIVE SHIELD	SQ. YD.	230
CONCRETE PARAPET RETROFIT	LIN. FT.	398
FURNISHING AND ERECTING STRUCTURAL STEEL	POUND	4347
SAWING PC CONCRETE PAVEMENT, 3/4"	LIN. FT.	724
PREFORMED JOINT SEAL, 1 3/4"	LIN. FT.	164

REVISIONS	
NAME	DATE

DEPARTMENT OF TRANSPORTATION  
IL. RTE. 53 @ KIRCHOFF RD.  
(SOUTHBOUND LANES)  
GENERAL NOTES  
AND  
BILL OF MATERIALS  
DATE  
CHECKED BY R V

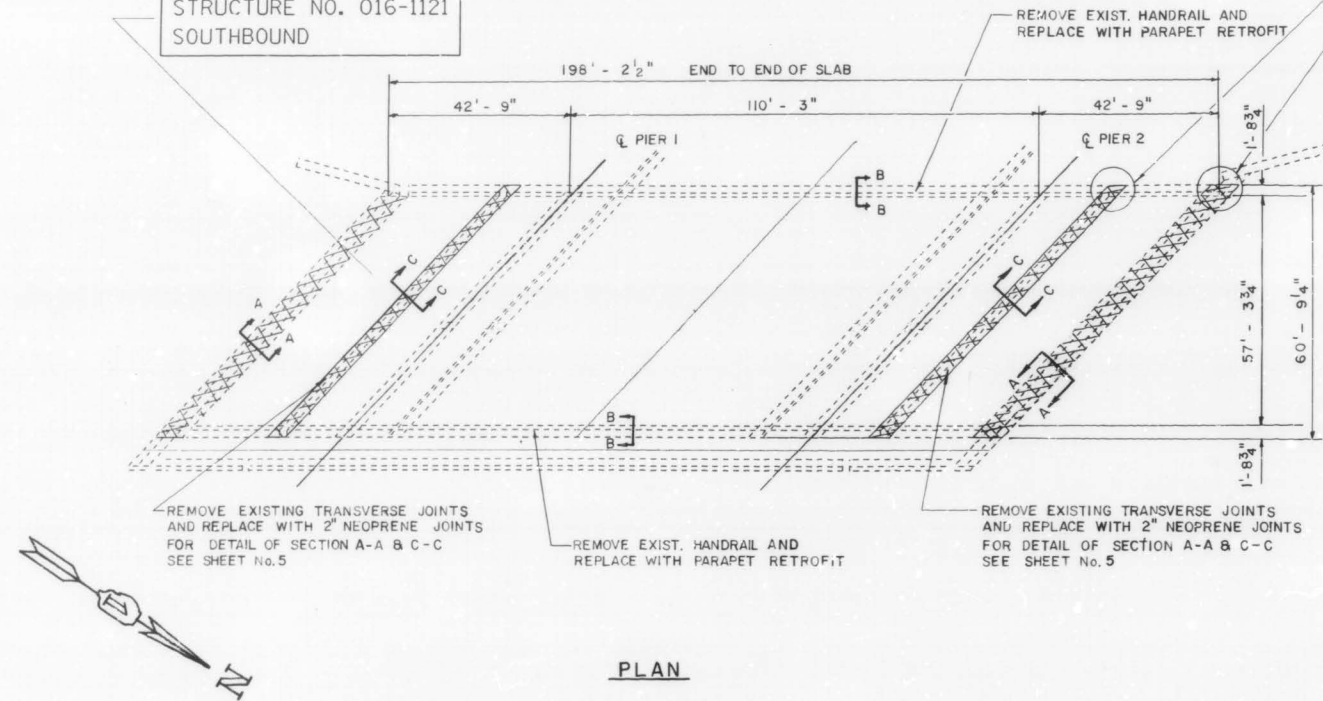


**LEGEND**

- DECK SLAB REPAIR (PARTIAL DEPTH) SEE DELAMTEC SHEET No. 4
- DECK SLAB REPAIR (FULL DEPTH) SEE BOTTOM DECK SURVEY SHEET No. 4
- CONCRETE TO BE REMOVED

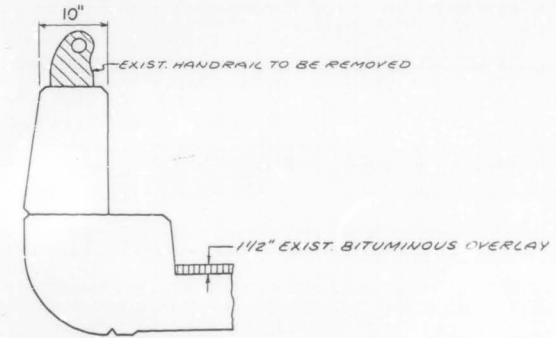
REMOVE 2' OF PARAPET AND 2' OF WINGWALL, TYPICAL AT ALL FOUR LOCATIONS. DETAILS ARE AVAILABLE IN THE I.D.O.T. DISTRICT 1 BUREAU OF DESIGN AND WILL BE PROVIDED AT THE PRECONSTRUCTION MEETING. QUANTITIES ARE INCLUDED IN THE PLANS.

STRUCTURE NO. 016-1121  
SOUTHBOUND

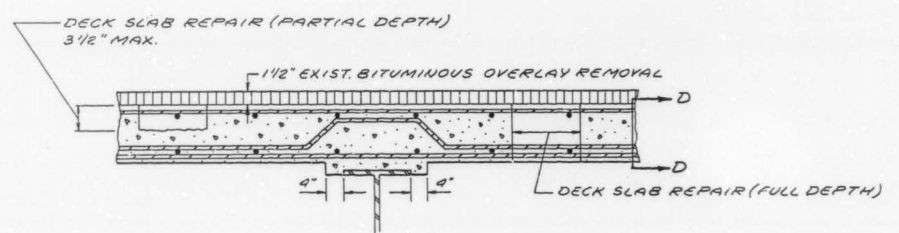


**PLAN**

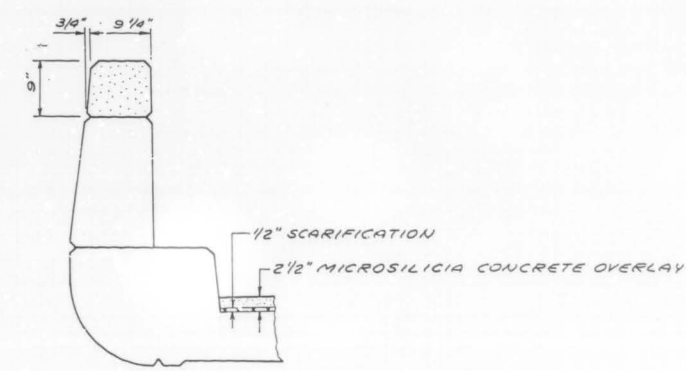
BILL OF MATERIALS		UNIT	QUANTITIES
ITEM			TOTAL
BITUMINOUS CONCRETE	REMOVAL (DECK)	SQ. YD.	1262
CONCRETE BRIDGE DECK SCARIFICATION 1/2"		SQ. YD.	1262
DECK SLAB REPAIR (PARTIAL DEPTH)		SQ. YD.	77
DECK SLAB REPAIR (FULL DEPTH)		SQ. YD.	10
MICROSILICIA CONCRETE BRIDGE DECK OVERLAY, 2 1/2"		SQ. YD.	1262
PROTECTIVE COAT		SQ. YD.	1363
PROTECTIVE SHIELD		SQ. YD.	230
PARAPET RETROFIT		LIN. FT.	398
HANDRAIL REMOVAL		LIN. FT.	398



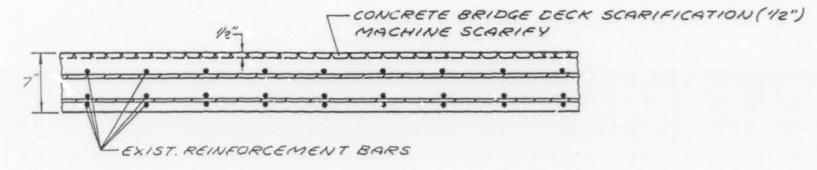
**SECTION B-B  
EXISTING PARAPET & HANDRAIL**



**TYPICAL SECTION OF EXISTING DECK**



**PARAPET WITH PROPOSED RETROFIT**



**SECTION D-D**

REVISIONS	
NAME	DATE

ILLINOIS DEPARTMENT OF TRANSPORTATION  
 IL. RTE. 53 @ KIRCHOFF RD. S.B.  
 BRIDGE REHABILITATION  
 STRUCTURE NO. 016-1121  
 DECK DETAILS

SCALE: VERT. \_\_\_\_\_  
 HORIZ. \_\_\_\_\_  
 DATE 10/23/90

DRAWN BY \_\_\_\_\_  
 CHECKED BY \_\_\_\_\_

11-OCT-90 08:26:56 (CREATED)  
 11-OCT-90 08:27:11 (MODIFIED)  
 LEVELS = 35

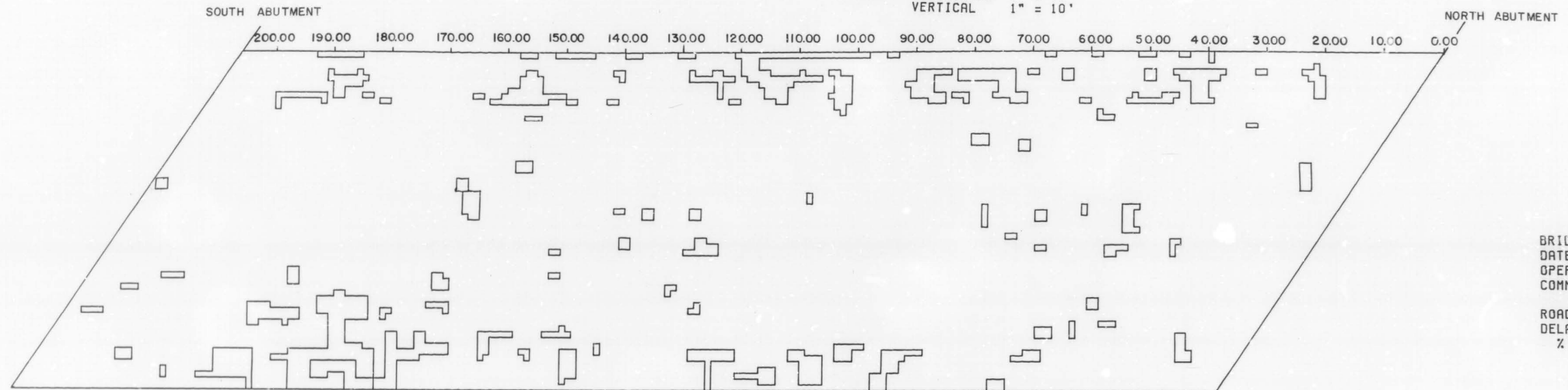
VI-BR12



FAP RTE 342	SECTION #	COUNTY COOK	TOTAL SHEETS 271	SHEET NO. 219
STA.		TO STA.		
FED. ROAD DIST. NO. 7		ILLINOIS	FED. AID PROJECT	

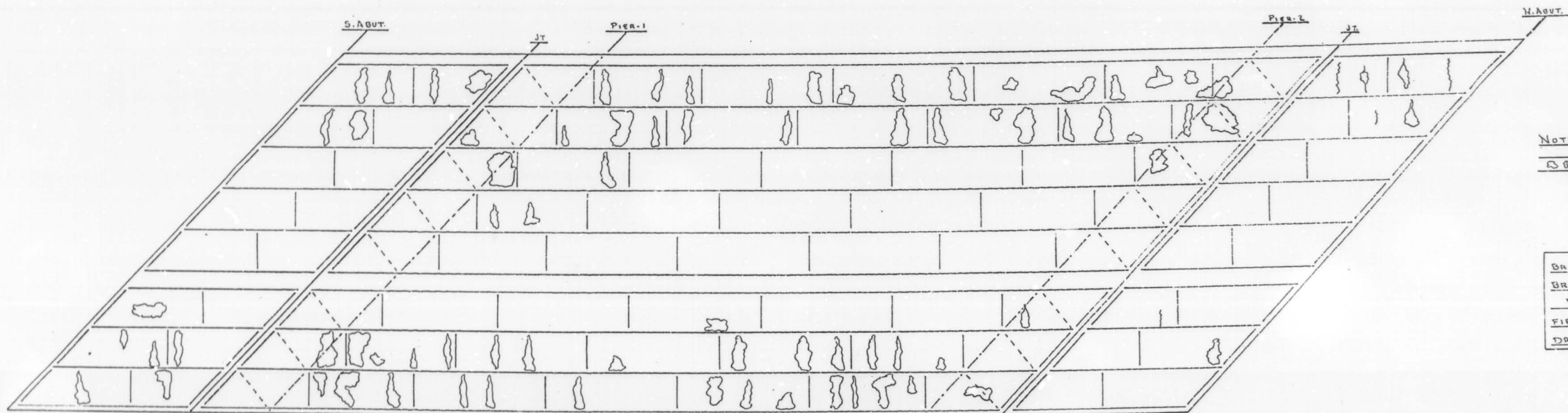
\* 531(142)R5-1(89) & 1989-107 BR  
SHEET 4 OF 7

SCALE: HORIZONTAL 1" = 10'  
VERTICAL 1" = 10'



BRIDGE: 016 1121  
DATE: 4/30/90  
OPERATOR: MATECHICK SB53/KIRCHOFF  
COMMENTS:

ROADWAY AREA: 1262 SY  
DELAMINATED AREA: 77 SY  
% DELAMINATED: 6 %



NOTE:  
No SPALL AREAS  
NO LEACHING AREAS

BRIDGE: ILL 53 S.B. / KIRCHOFF RD.  
BRIDGE No. 016-1121 \* L17  
BOTTOM DECK SURVEY  
FIELD DATA NM DATE 3/3/90  
DRAWN BY NM DATE 3/14/90

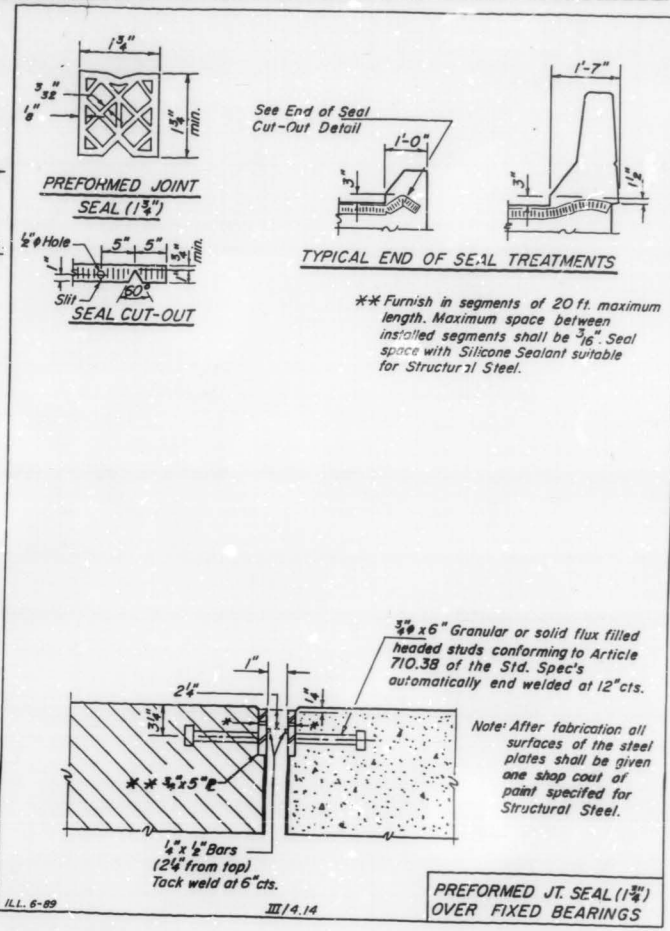
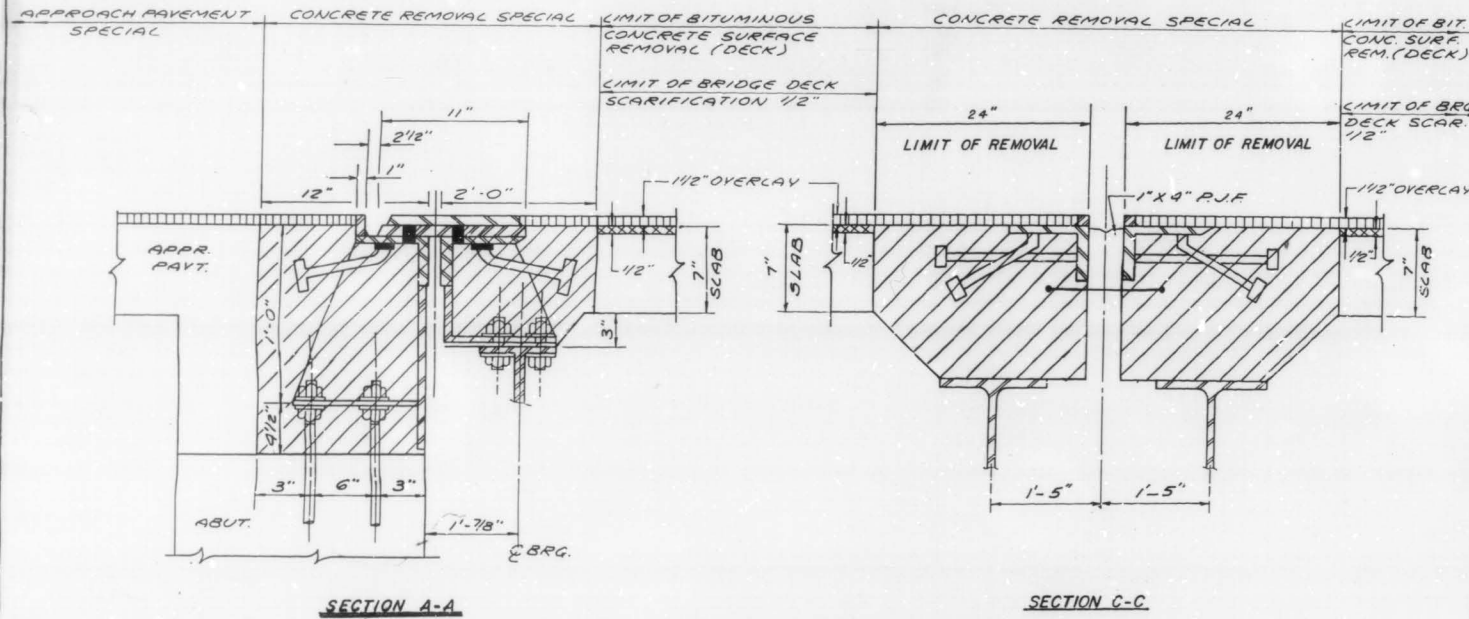
REVISIONS	
NAME	DATE

DEPARTMENT OF TRANSPORTATION  
IL. RTE. 53 @ KIRCHOFF RD. S.B.  
BRIDGE REHABILITATION  
STRUCTURE NO. 016-1121  
DELAMTEC  
BOTTOM DECK SURVEY  
DATE  
CHECKED BY



NOTES: EXISTING REINFORCEMENT BARS IN THE REMOVAL AREAS SHALL BE CLEANED BEFORE PLACEMENT OF NEW CLASS X CONCRETE. (COST TO BE INCIDENTAL TO "CLASS X CONCRETE"). REMOVAL OF EXISTING STRUCTURAL STEEL SHALL BE INCIDENTAL TO "CONCRETE REMOVAL SPECIAL".

F.A. NO.	SECTION	COUNTY	SHEET
342	*	COOK	271 220
STA.	TO STA.		
FED. ROAD DIST. NO. Y		ILLINOIS	FED. AID P.N.
* 53: (182) RS - 1(89) B 1989-1078A			



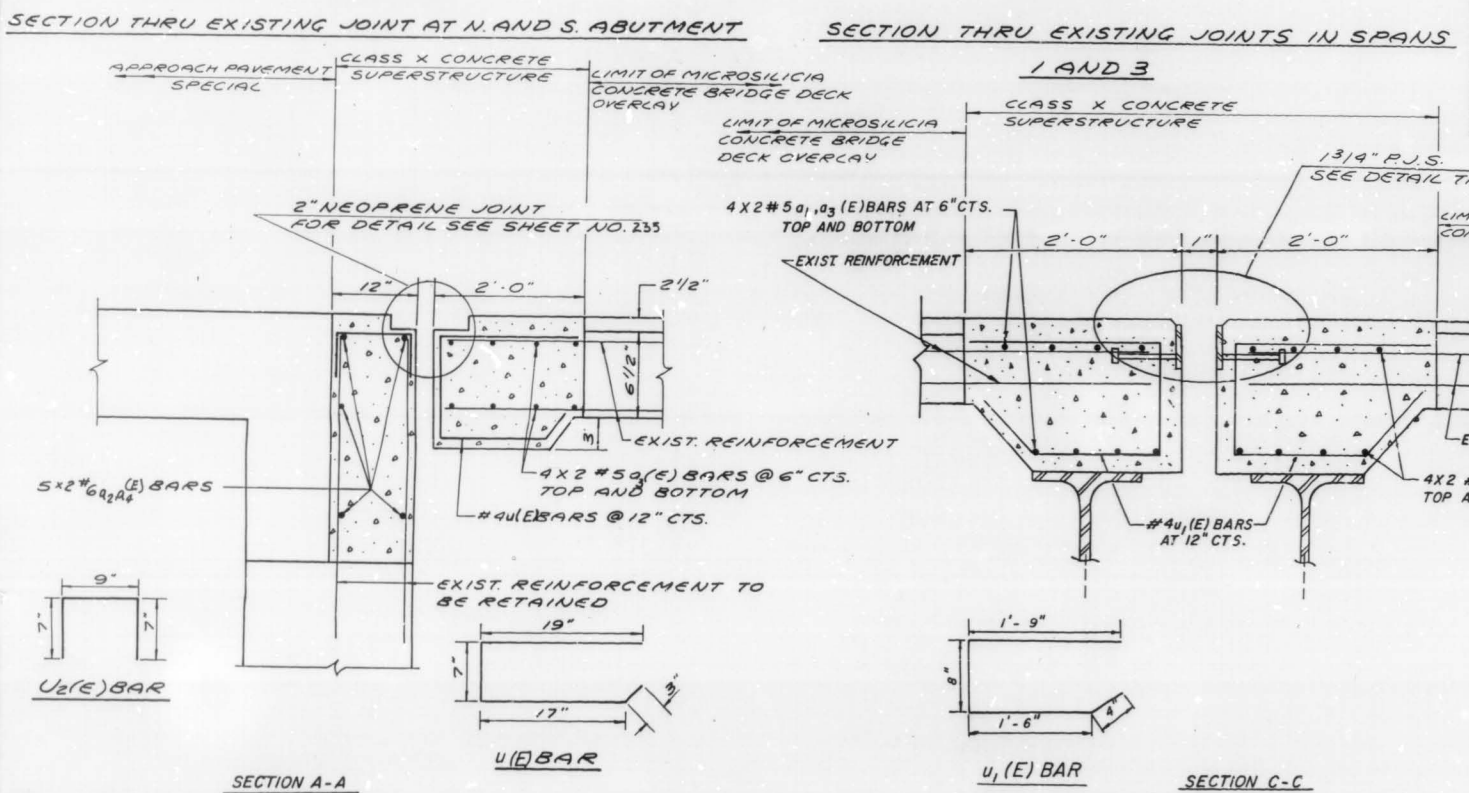
**BAR LIST** SHEET 5 OF 7

BAR NO.	NO.	SIZE	LENGTH	SHAPE
Q <sub>1</sub> (E)	96	#5	2'-3"	—
Q <sub>2</sub> (E)	20	#6	2'-5"	—
Q <sub>3</sub> (E)	96	#5	19'-4"	—
Q <sub>4</sub> (E)	20	#6	19'-6"	—
U (E)	150	#4	3'-10"	—
U <sub>1</sub> (E)	300	#4	4'-3"	—
U <sub>2</sub> (E)	150	#4	1'-11"	—

(E) - DENOTES EPOXY COATED

**BILL OF MATERIALS**

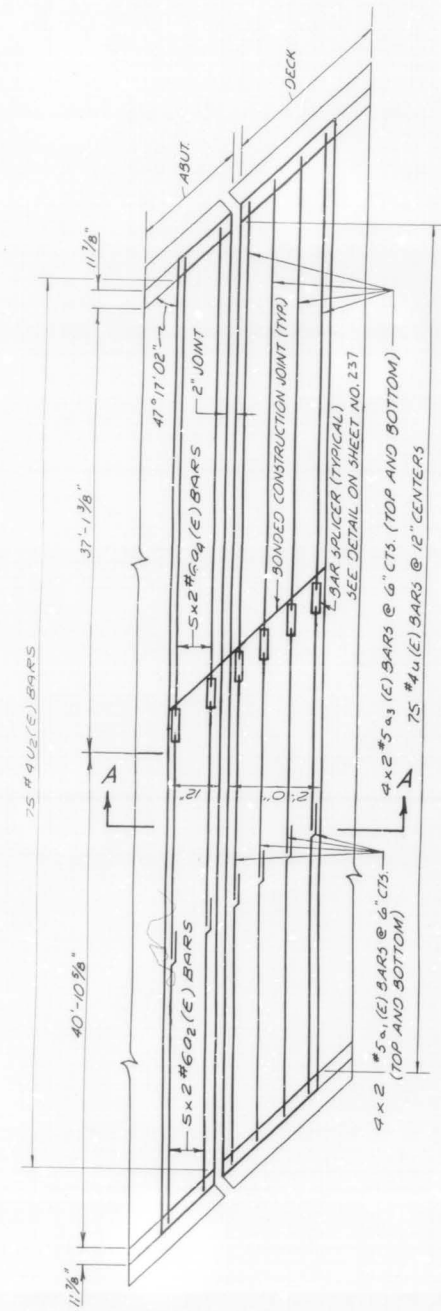
ITEM	UNIT	QUANTITY
CONCRETE REMOVAL, SPECIAL	CU. YD.	41.0
REINFORCEMENT BARS (EPOXY COATED)	POUND	7232
CLASS X CONCRETE SUPERSTRUCTURE	CU. YD.	98.4
SAWING P.C. CONCRETE PAVEMENT, 3/4"	LIN. FT.	724
FURNISHING AND ERECTING STRUCTURAL STEEL	POUND	4347
NEOPRENE JOINT, 2"	LIN. FT.	164
PROTECTIVE COAT	SQ. YD.	150
PREFORMED JOINT SEAL, 1 3/4"	LIN. FT.	163



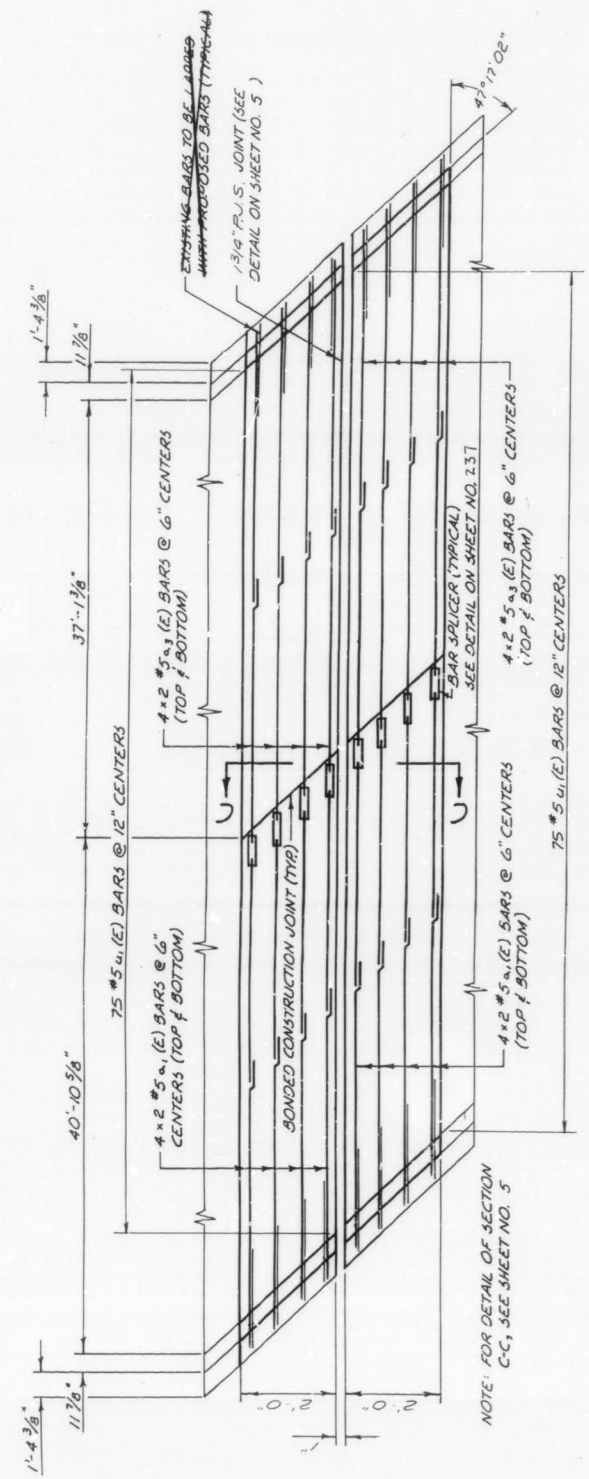
REVISIONS	
NAME	DATE

ILLINOIS DEPARTMENT OF TRANSPORTATION  
 I. RTE. 53 @ KIRCHOFF RD  
 (SOUTHBOUND)  
 STRUCTURE No. 016-1121  
 JOINT RECONSTRUCTION DETAIL  
 SCALE: VERT. NONE HORIZ. DRAWN BY J.R.C. CHECKED BY J.V.  
 DATE

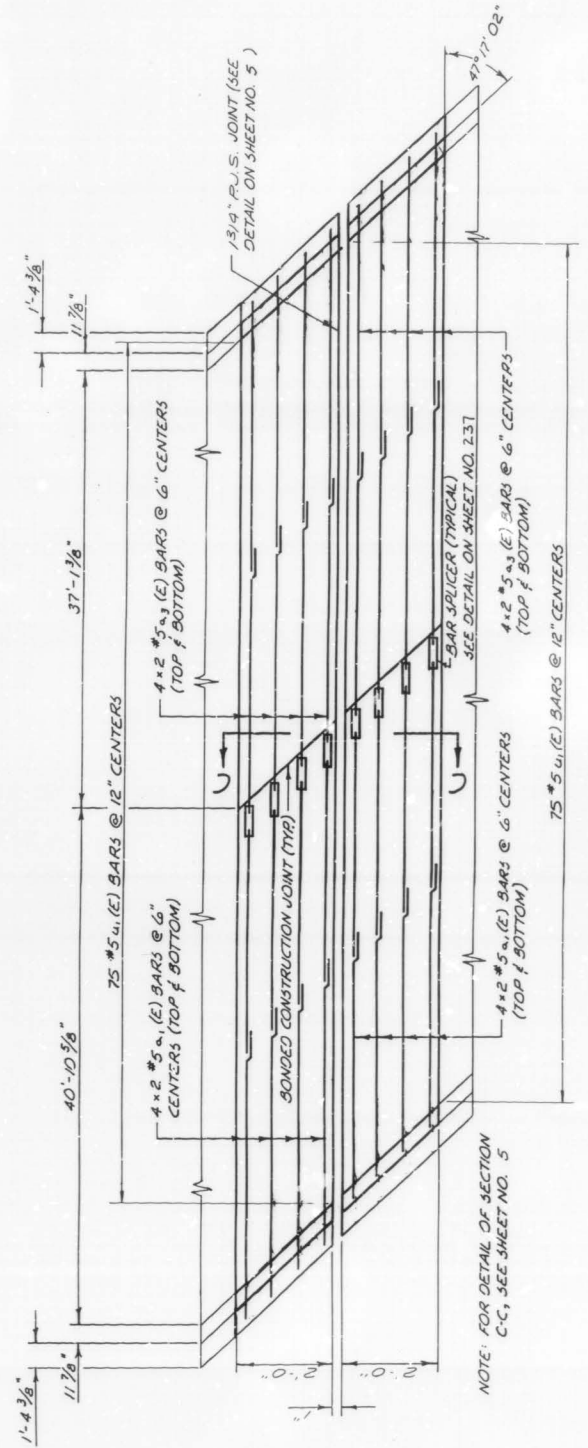




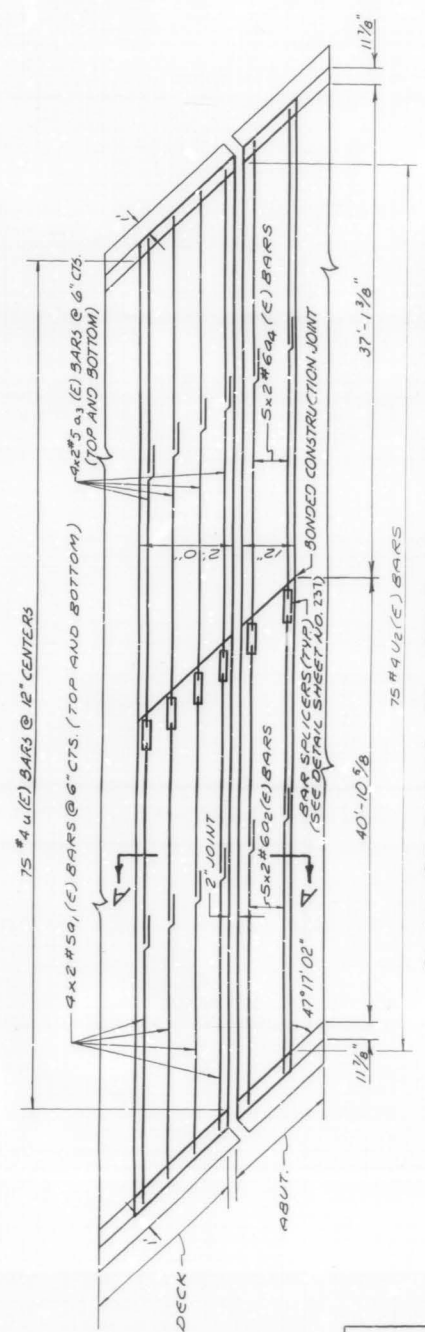
PLAN OF PROPOSED JOINT AT NORTH ABUTMENT



PLAN OF PROPOSED HINGE JOINT AT SPAN 3



PLAN OF PROPOSED HINGE JOINT AT SPAN 1



PLAN OF PROPOSED JOINT AT SOUTH ABUTMENT

NOTE: SECTIONS A-A & C-C SHOWN ON PREVIOUS SHEET



REVISIONS	
NAME	DATE

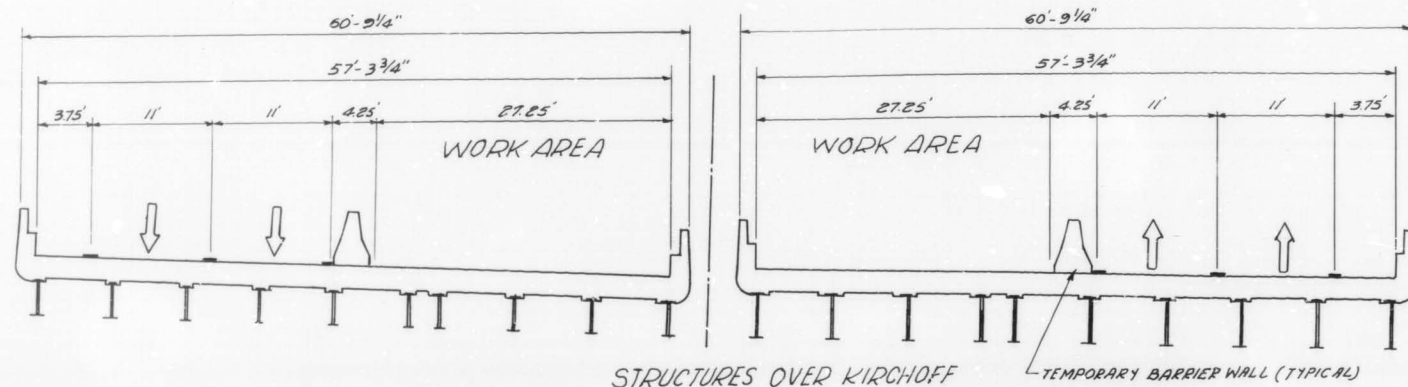
ILLINOIS DEPARTMENT OF TRANSPORTATION  
ILL. RTE. 53 @ KIRCHOFF RD. S.B.  
BRIDGE REHABILITATION  
STRUCTURE NO. 016-1121  
JOINT RECONSTRUCTION  
SCALE: NO SCALE DRAWN BY M.H.  
DATE: NOVEMBER, 1990 CHECKED BY R.Y.

△ D △ C △ B △ A △ A △ B △ C △ D

FAP	SECTION	COUNTY	TOTAL SHEETS	SHEET NO.
342	*	COOK	271	222
STA.	TO STA.			
FED. ROAD DIST. NO. 7	ILLINOIS	FED. AID PROJECT:		

NOTE: NO BRIDGE WORK IN STAGE I CONSTRUCTION.

\* 531 (1&2)R5-1(89) of 1989-107 BR  
SHEET 7 OF 7



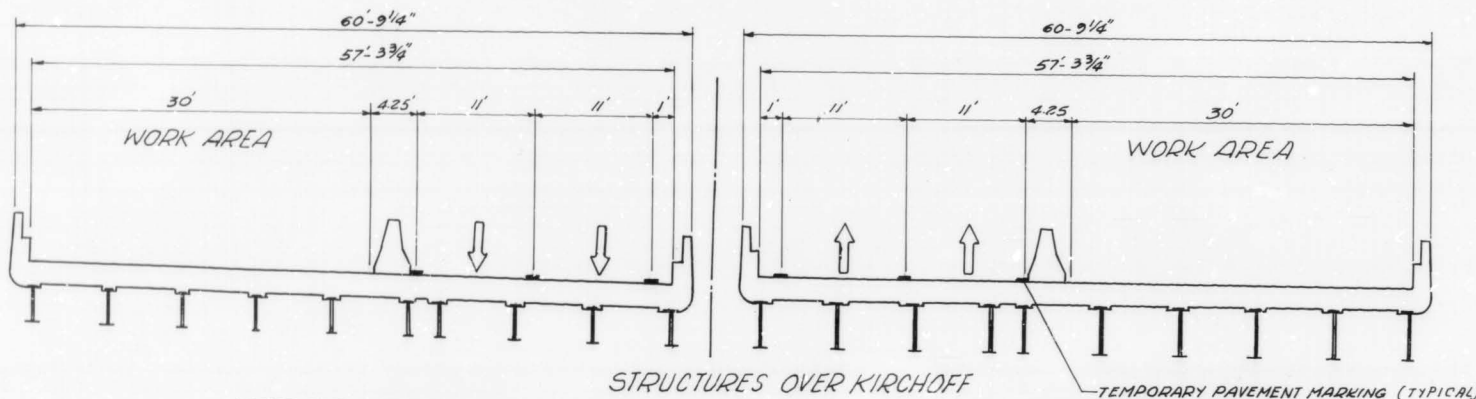
WEST STRUCTURE-LOOKING SOUTH  
SOUTHBOUND  
STRUCTURE NO. 016-1121  
STAGE-III

EAST STRUCTURE-LOOKING NORTH

STRUCTURES OVER KIRCHHOFF

TEMPORARY BARRIER WALL (TYPICAL)

- STAGE II
- 1.) PLACE ALL TRAFFIC CONTROL AND REROUTE TRAFFIC TO OUTSIDE LANES
  - 2.) REMOVE EXISTING BRIDGE DECK BITUMINOUS OVERLAY 1 1/2"
  - 3.) SCARIFY BRIDGE DECK SLAB 1/2"
  - 4.) REMOVE EXISTING HANDRAIL AND REPLACE WITH A CONCRETE PARAPET RETROFIT
  - 5.) CONSTRUCT PARTIAL AND FULL DEPTH DECK SLAB REPAIRS
  - 6.) REMOVE EXISTING TRANSVERSE JOINTS
  - 7.) INSTALL PROPOSED PREFORMED JOINT SEAL OR NEOPRENE JOINTS
  - 8.) PLACE PROPOSED MICROSILICIA CONCRETE BRIDGE DECK OVERLAY 2 1/2"



WEST STRUCTURE-LOOKING SOUTH  
SOUTHBOUND  
STRUCTURE NO. 016-1121  
STAGE-II

EAST STRUCTURE-LOOKING NORTH

STRUCTURES OVER KIRCHHOFF

TEMPORARY PAVEMENT MARKING (TYPICAL)

- STAGE III
- 1.) RELOCATE ALL TRAFFIC CONTROL AND REROUTE TRAFFIC TO INSIDE LANES
  - 2.) REMOVE EXISTING BRIDGE DECK BITUMINOUS OVERLAY 1 1/2"
  - 3.) SCARIFY BRIDGE DECK SLAB 1/2"
  - 4.) REMOVE EXISTING HANDRAIL AND REPLACE WITH A CONCRETE PARAPET RETROFIT.
  - 5.) CONSTRUCT PARTIAL AND FULL DEPTH DECK SLAB REPAIRS
  - 6.) REMOVE EXISTING TRANSVERSE JOINTS
  - 7.) INSTALL PROPOSED PREFORMED JOINT SEAL OR NEOPRENE JOINTS
  - 8.) PLACE PROPOSED MICROSILICIA CONCRETE BRIDGE DECK OVERLAY 2 1/2"

REVISIONS	
NAME	DATE

DEPARTMENT OF TRANSPORTATION  
ILLINOIS ROUTE-53  
(SOUTHBOUND)  
TYPICAL STAGING CROSS SECTION  
STRUCTURE OVER KIRCHHOFF  
STRUCTURE NO. 016-1121

DATE  
CHECKED BY

