

ST-44 STA: 209+22.25; 52.7 LT 6' MH TY A W/TY 1 F, CL RIM 755.01 IE 747.14 (42" N,S) IE 749.97 (12" E)	ST-46 STA: 209+21.96; 29.4 RT 4' MH TY A W/TY 1 F, CL RIM 754.03 IE 751.48 (12" N) IE 751.48 (12" W)	ST-46b STA: 209+50; 22.0 LT 2' IN TY A W/TY 1 F & G RIM 754.93 IE 751.93 (12" S)	ST-48c STA: 211+22.22; 32.3 RT EXIST. CB W/TY 1 F, CL EXIST. RIM 754.47 ADJ. RIM 754.90 IE 748.48 (48" N,S) IE 749.12 (24" E)	ST-49c STA: 213+60.67; 43.7 LT 6' MH TY A W/RESTR PLATE W/2 TY 1 F & CL'S CONTROL STRUCTURE RIM 755.57 IE 749.58 (36" W,E) PER IDOT DETAIL 80-12 SEE STANDARD DETAILS	ST-49b STA: 213+60.80; 55.7 LT 7' MH TY A W/TY 1 F, CL RIM 755.90 IE 749.55 (36" N,S) IE 749.55 (36" E)	ST-54 STA: 214+39.77; 54.7 LT 5' MH TY A W/TY 1 F, CL RIM 756.17 IE 752.65 (12" E) IE 750.04 (36" N,S)	ST-55 STA: 214+39.66; 48.0 LT 4' CB TY A W/TY 24 F&G RIM 755.77 IE 752.77 (12" W)
ST-45 STA: 209+22.23; 48.0 LT 4' CB TY A W/TY 24 F&G RIM 754.60 IE 750.05 (12" E,S,W)	ST-46a STA: 209+22.14; 22.0 LT 4' MH TY A W/TY 24 F&G RIM 754.98 IE 751.37 (12" N) IE 750.54 (12" W,E)	ST-47 STA: 209+49.99; 33.0 RT 2' IN TY A W/TY 24 F&G RIM 754.16 IE 751.62 (12" S)	ST-48d STA: 211+28.83; 37.1 RT EXIST. IN EXIST. RIM 754.73 ADJ. RIM 754.76 IE 752.28 (12" SW)	ST-50 STA: 213+61.82; 22.0 RT 7' MH TY A W/TY 24 F&G RIM 755.59 IE 749.92 (36" N,W)	ST-51 STA: 214+58.65; 22.0 RT 5' MH TY A W/TY 24 F&G RIM 756.02 IE 750.21 (36" N,S)	ST-52 STA: 214+76.66; 22.0 RT 5' MH TY A W/TY 24 F&G RIM 756.12 IE 750.26 (36" N,S)	

P-44a 4 LF - 12" WMOP TYPE 2 @ 2.00%	P-46b 28 LF - 12" RCP TYPE 2 @ 0.50%	P-50 97 LF - 36" RCP TYPE 2 @ 0.30%
P-44b 8 LF - 42" RCP TYPE 2 @ 0.54%	P-48 12 LF - 36" RCP TYPE 2 @ 0.25%	P-51 18 LF - 36" RCP TYPE 2 @ 0.28%
P-45 2 LF - 12" RCP TYPE 2 @ 1.83%	P-49 67 LF - 36" RCP TYPE 2 @ 0.51%	P-54 6 LF - 12" WMOP TYPE 2 @ 2.00%
P-46a 28 LF - 12" RCP TYPE 2 @ 2.00%		

UTILITY CROSSINGS

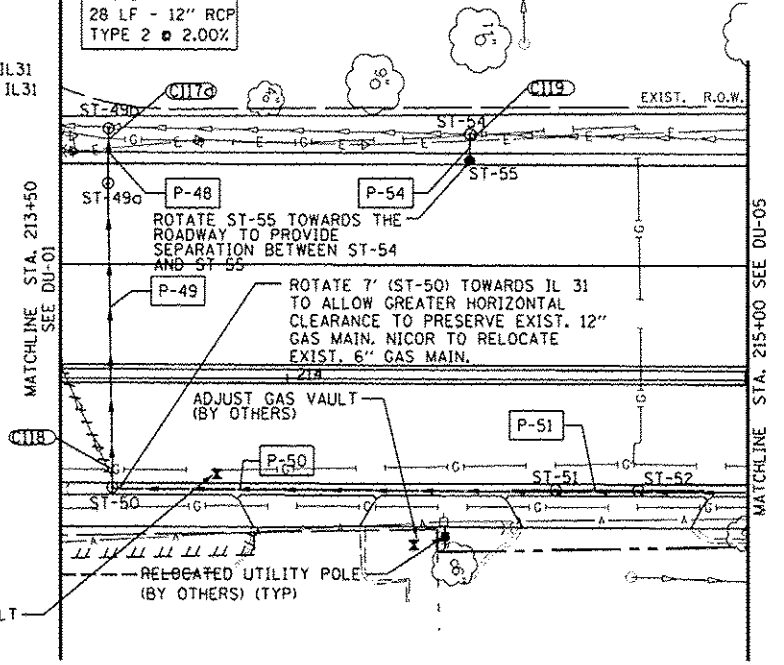
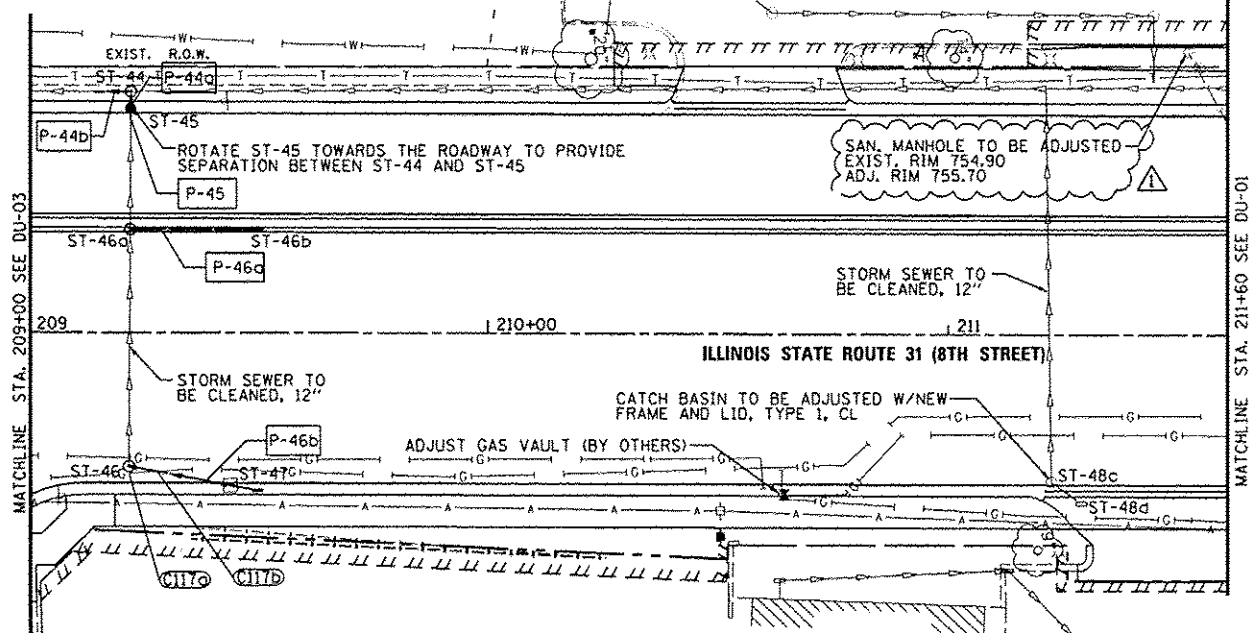
C1170 ST-46: EXIST IN GAS: 6" STEEL T/P 750.80

C1170 36" ST IE 749.56 GAS LINE DEPTH IS UNKNOWN

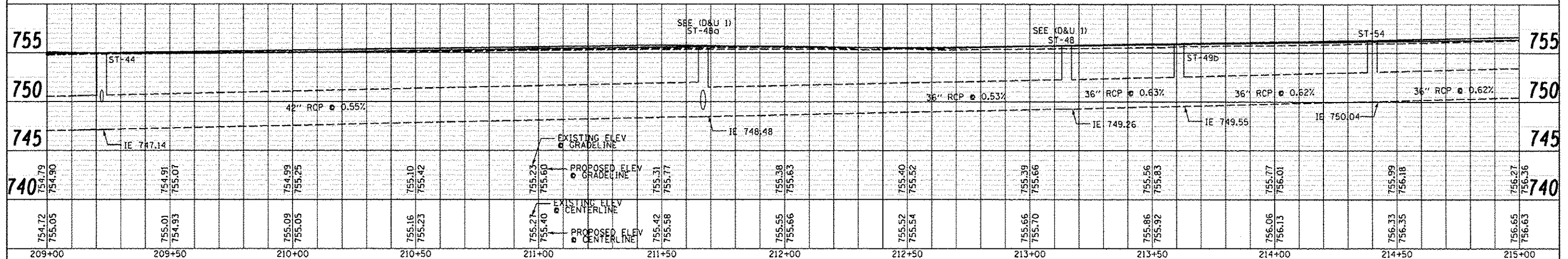
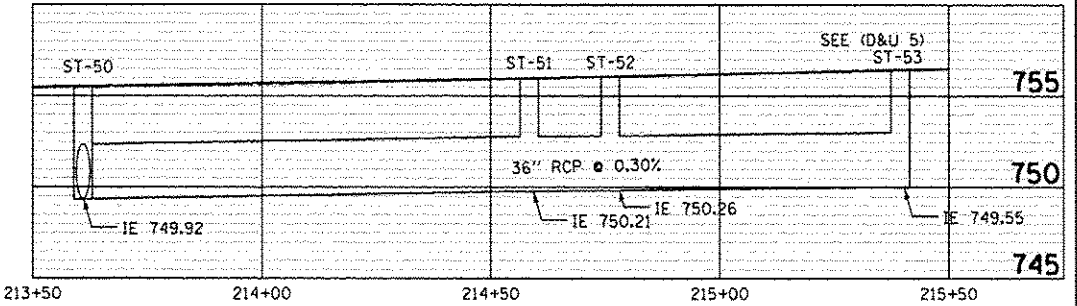
C1170 12" ST IE 751.51 GAS: 6" STEEL T/P 750.50

C1170 ST-50: 7' CB 36" ST IE 749.90 GAS: 6" 20'E/CL IL31 GAS: 12" 27'E/CL IL31

C1170 ST-54: 5' MH GAS LINE DEPTH IS UNKNOWN



- NOTES:**
- FOR STRUCTURES LOCATED WITHIN THE CURB, OFFSETS AND RIM ELEVATIONS ARE GIVEN AT THE EDGE OF PAVEMENT.
 - LOCATION OF EXISTING GAS LINE AND ELECTRICAL LINE IS APPROXIMATE AND THE DEPTH IS UNKNOWN. LOCATE UNDERGROUND LINES BEFORE STORM SEWER CONSTRUCTION AND NOTIFY ENGINEER IF THERE IS A CONFLICT.
 - IN CASES WHERE WATERMAIN LINE INFORMATION WAS NOT AVAILABLE, THE SLOPE FOR THE TOP OF PIPE ELEVATION IS ASSUMED AT 0% AND CROSSING INFORMATION IS NOTED AS 'EXIST.'. CONTRACTOR SHALL LOCATE POTENTIAL CONFLICTS AND NOTIFY THE ENGINEER PRIOR TO INSTALLING STORM SEWER LINES.
 - IN CASES WHERE SANITARY SEWER INVERT ELEVATIONS WERE NOT AVAILABLE, CONTRACTOR SHALL LOCATE POTENTIAL CONFLICTS AND NOTIFY THE ENGINEER PRIOR TO INSTALLING STORM SEWER LINES.
 - SEE THE STREET LIGHTING PLAN SHEETS FOR LIGHT POLE REMOVAL AND RELOCATION.
 - SEE TRAFFIC SIGNAL PLAN SHEETS FOR REMOVALS RELATED TO TRAFFIC SIGNAL EQUIPMENT.



DATE	
BY	
REVIEWED	
PLANNED	
NOTED	
NO.	

DATE	
BY	
REVIEWED	
PLANNED	
NOTED	
NO.	