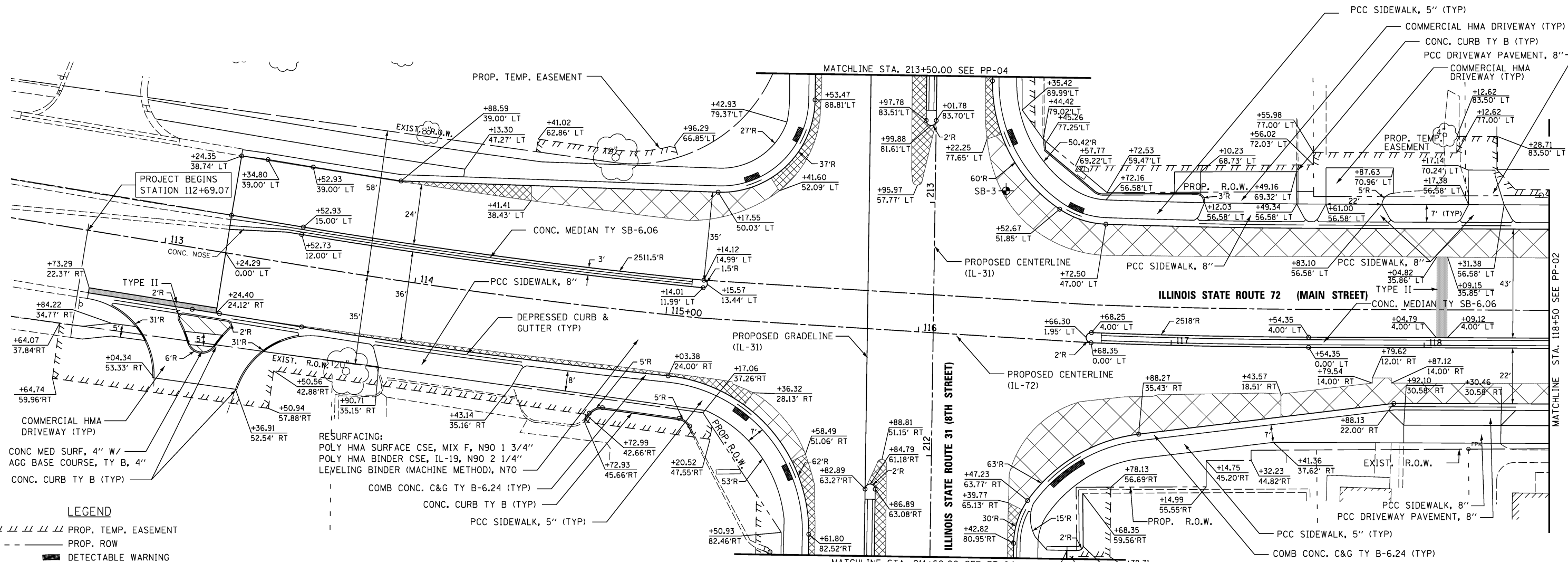


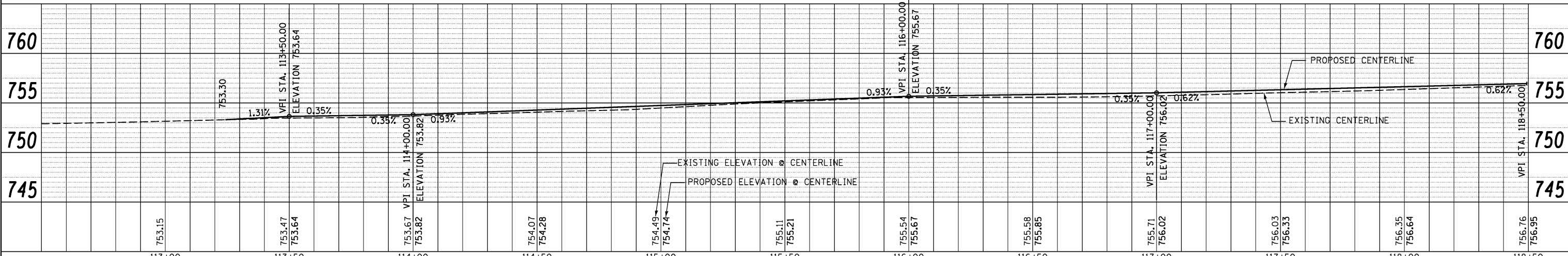
DATE	
BY	
PLAN	SURVEYED
	PLOTTED
	ALIGNED
	CHECKED
	DESIGNED
	NO. _____
	FILE NAME _____

DATE	
BY	
PROFILE	SURVEYED
	PLOTTED
	GRADES
	CHECKED
	STRUCTURE
	NOTATIONS
	CHKD
	NO. _____



- LEGEND**
- PROP. TEMP. EASEMENT
  - - - PROP. ROW
  - DETECTABLE WARNING
  - ⊙ SOIL BORING LOCATION (SB-X)
  - CLASS D PATCH OF TYPE SPECIFIED, 13"
  - ▨ FULL DEPTH PVMT
  - ▧ PCC BASE CSE PAID AS
  - ▩ PCC BASE CSE 9 3/4" (IL31); 8" (IL72)
  - FULL DEPTH PVMT
  - ▬ PCC BASE CSE PAID AS
  - ▭ PCC BASE CSE WIDENING 9 3/4" (IL31); 8" (IL72)
  - ▮ CONCRETE MEDIAN SURFACE, 4"
  - ▯ AGGREGATE BASE COURSE, TYPE B, 4"
- FULL-DEPTH PVMT:**  
 POLY HMA SURFACE CSE, MIX F, N90 1 3/4"  
 POLY HMA BINDER CSE, IL-19, N90 2 1/4"  
 PCC BASE CSE, 9 3/4" (IL 31); 8" (IL 72)  
 SUBBASE GRANULAR MATERIAL, TY B, 4"
- PRIVATE HMA DRIVEWAY (TYP):**  
 HMA SURFACE CSE, MIX D, N50 2"  
 HMA BASE CSE, 6"
- COMMERCIAL HMA DRIVEWAY (TYP):**  
 HMA SURFACE CSE, MIX D, N50 2"  
 HMA BASE CSE, 8"

- NOTES**
- SEE CROSS SECTIONS FOR REVERSE CURB & GUTTER LOCATIONS.
  - SEE SHEETS 43 & 44 FOR MILLING AND LEVELING BINDER DEPTHS AND LOCATIONS.
  - SEE SHEET 55 FOR SOIL BORINGS AND PAVEMENT CORES.



<p>V3 Companies          7333 James Avenue          Woodridge, IL 60517          815.724.9200 phone          815.724.9202 fax          www.v3co.com</p>	USER NAME = *USER* CHECKED <i>GJS</i> PLOT SCALE = *SCALE* PLOT DATE = *DATE*	DESIGNED <i>ESI</i> CHECKED <i>ESI</i> DRAWN <i>ESI</i> CHECKED <i>07/03/12</i>	REVISED - REVISED - REVISED - REVISED -	<p align="center"><b>STATE OF ILLINOIS          DEPARTMENT OF TRANSPORTATION</b></p>	<p align="center"><b>PROPOSED ROADWAY PLAN AND PROFILE          ILLINOIS 72</b></p>	SCALE: 1" = 20' SHEET NO. 1 OF 6 SHEETS STA. 113+00 TO STA. 118+50	F.A.U. RTE. 3887 SECTION S-N COUNTY KANE TOTAL SHEETS 153 SHEET NO. 49 CONTRACT NO. 60A95	FED. ROAD DIST. NO. 1 ILLINOIS FED. AID PROJECT
---	--	--	--	--	---	--	--	---