
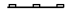
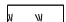

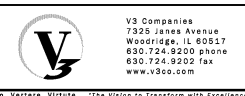
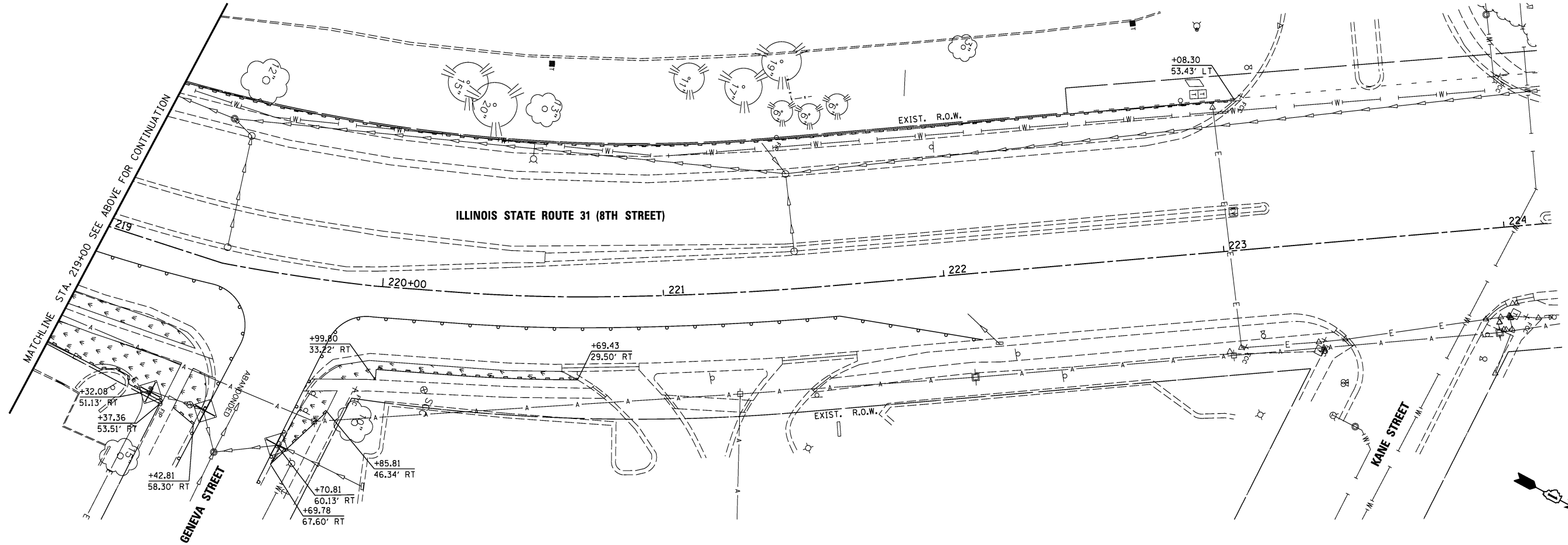


LEGEND

-  INLET FILTER BASKET
-  PERIMETER EROSION BARRIER
-  TEMPORARY EROSION CONTROL SEEDING
-  TEMPORARY FENCE

NOTES

1. CONTRACTOR SHALL DO THEIR WORK IN ACCORDANCE WITH STORM WATER POLLUTION PREVENTION PLAN (SWPPP) AND ILLINOIS ENVIRONMENTAL PROTECTION AGENCY (IEPA).
2. CONTRACTOR SHALL REFER TO THE CONTRACT MANUAL FOR THE SWPPP.
3. FOR AREAS WHERE SEEDING IS SHOWN ON EXIST. PAVEMENT, SEEDING SHALL BE INSTALLED AFTER PAVEMENT REMOVAL.



USER NAME = #USER#	DESIGNED <i>ESI</i>	REVISED -
DRAWN <i>ESI</i>	REVISED -	
PLOT SCALE = #SCALE#	CHECKED <i>GJS</i>	REVISED -
PLOT DATE = #DATE#	DATE <i>07/03/12</i>	REVISED -

**STATE OF ILLINOIS
DEPARTMENT OF TRANSPORTATION**

**PROPOSED EROSION CONTROL PLAN
STAGE 1**

SCALE: 1" = 20' SHEET NO. 3 OF 9 SHEETS STA. 215+00 TO STA. 222+00

F.A.U. RTE.	SECTION	COUNTY	TOTAL SHEETS	SHEET NO.
3887	S-N	KANE	153	65
CONTRACT NO. 60A95				
FED. ROAD DIST. NO. 1 ILLINOIS FED. AID PROJECT				