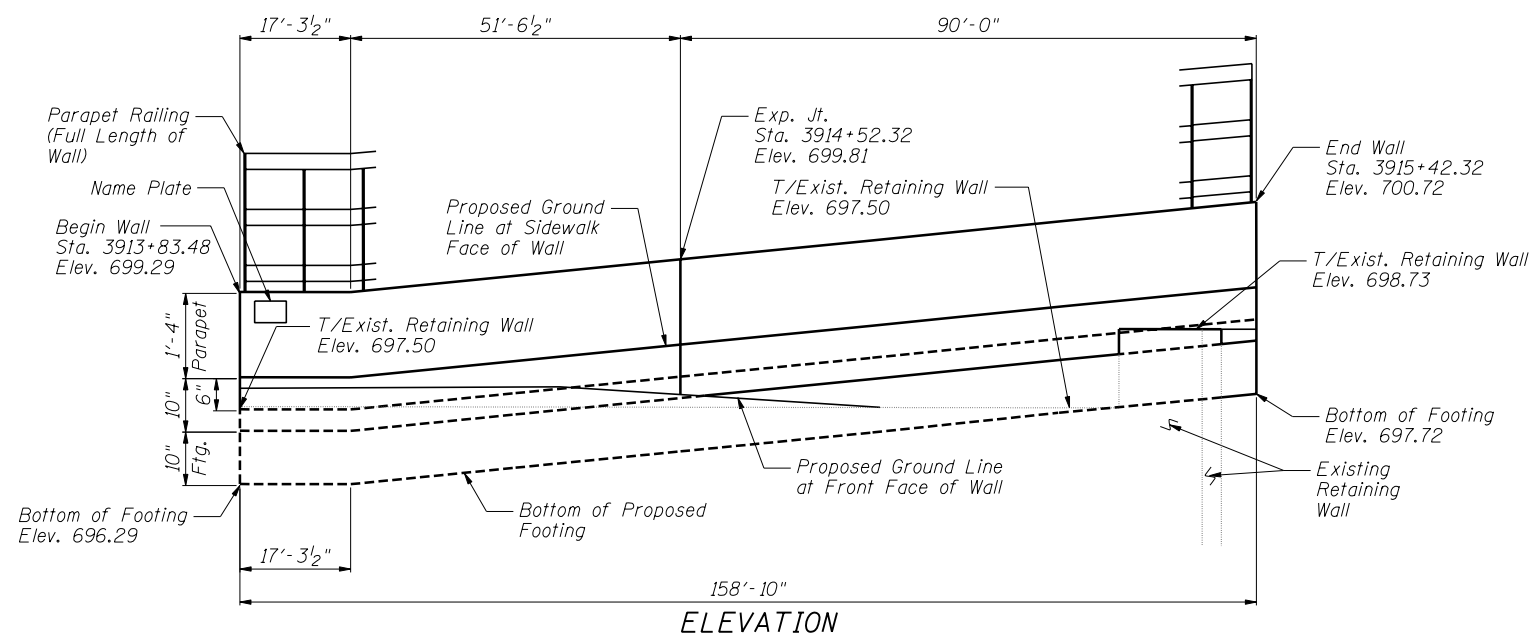


Bench Mark: Square "□" cut in west face of high tension tower base, east side of IL Rte 59
Sta. 3905+18, 79' Rt., Elev. 696.82

Existing Structure: None



INDEX OF SHEETS

- SA-1. General Plan & Elevation
- SA-2. Wall Plan & Elevation
- SA-3. Wall Section & Details
- SA-4. Details of Wall at Existing Retaining Wall
- SA-5. Parapet Railing
- SA-6. Boring Logs

DESIGN SPECIFICATIONS
2002 AASHTO Standard Specifications for Highway Bridges, 17th Edition

DESIGN STRESSES

FIELD UNITS

- $f'_c = 3,500$ psi
- $f_y = 60,000$ psi (reinforcement)
- $f_y = 36,000$ psi (M270 Grade 36)

STATION 3913+83.48
BUILT 2011 BY
STATE OF ILLINOIS
F.A.P. RT. 338
SEC. 2011-036-1
STR. NO. 022-W043

NAME PLATE
See Std. 515001

GENERAL NOTES

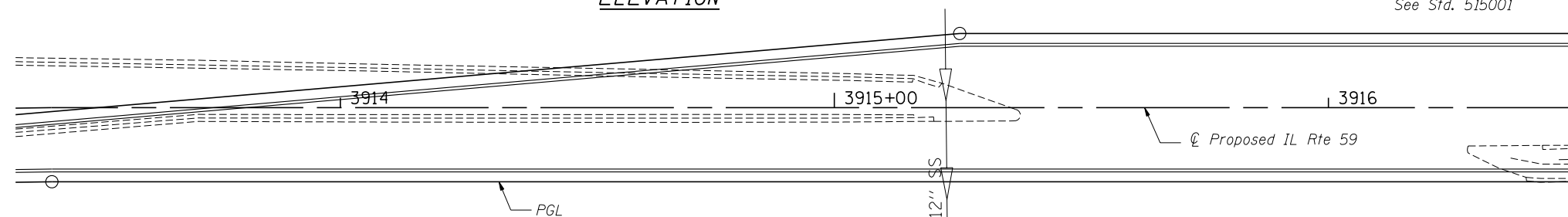
1. Reinforcement bars designated (E) shall be epoxy coated.
2. Protective coat shall be applied to exposed surfaces of the top and back face of wall and the top of the sidewalk.
3. Plan dimensions and details relative to existing plans are subject to nominal construction variations. The Contractor shall field verify existing dimensions and details affecting new construction and make necessary approved adjustments prior to construction or ordering of materials. Such variations shall not be cause for additional compensation for a change in scope of the work, however, the Contractor will be paid for the quantity actually furnished at the unit price bid for the work.

TOTAL BILL OF MATERIAL

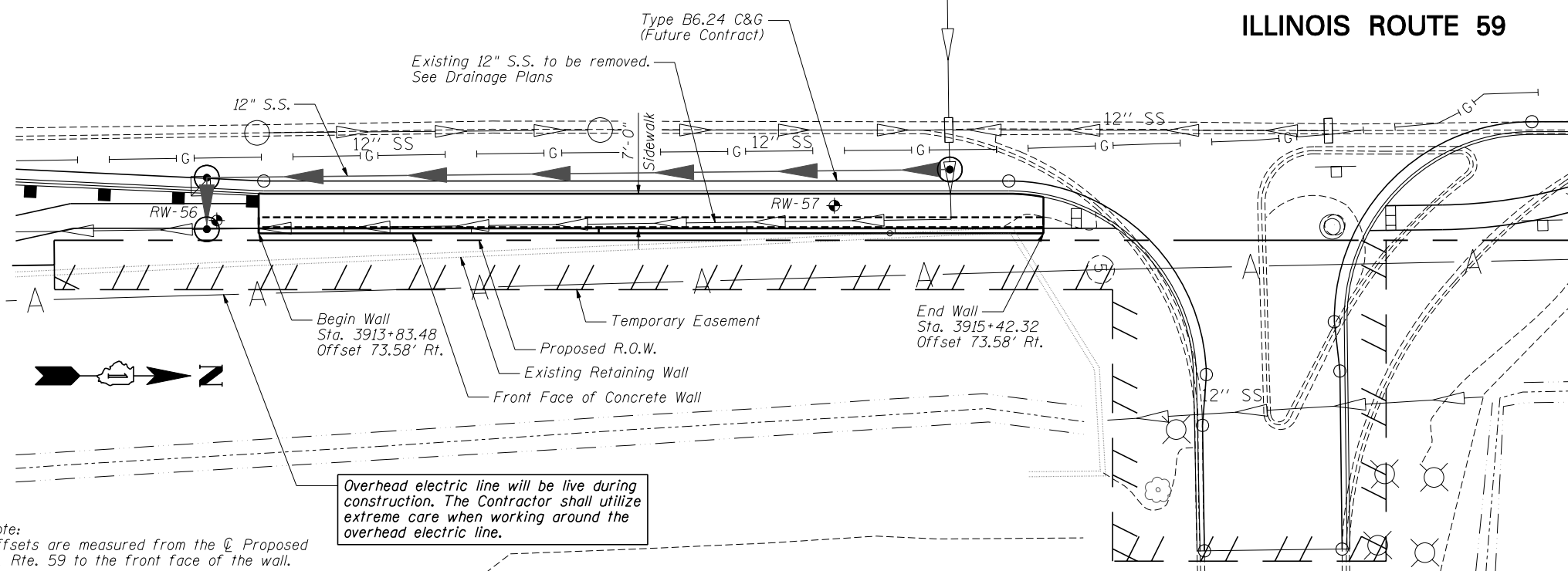
ITEM	UNIT	TOTAL
Structure Excavation	Cu. Yd.	46
Concrete Structures	Cu. Yd.	47.9
Protective Coat	Sq.Yd.	165
Reinforcement Bars, Epoxy Coated	Pound	7,510
Name Plates	Each	1
Parapet Railing	Foot	159



Deborah A. Zrka
Signature Date
November 30, 2012
Expires



ILLINOIS ROUTE 59



PLAN

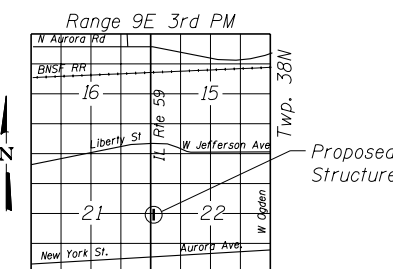
Note:
Offsets are measured from the ϕ Proposed IL Rte. 59 to the front face of the wall.

Roadway work will be in future Contract 60R30.



PROFILE GRADE

(along edge of pavement proposed IL Route 59)



LOCATION SKETCH

GENERAL PLAN AND ELEVATION
IL RTE 59 FAP RTE 338
SECTION 2011-036-1
DUPAGE COUNTY

STA. 3913+83.48 TO STA. 3915+42.32
SN 022-W043



USER NAME = SAW	DESIGNED - PMM	REVISED -
PLOT SCALE = 3/8" = 1' IN.	CHECKED - DAZ	REVISED -
PLOT DATE = 5/4/2012	DRAWN - SAW	REVISED -
	CHECKED - PMM	REVISED -

STATE OF ILLINOIS
DEPARTMENT OF TRANSPORTATION

GENERAL PLAN & ELEVATION
STA. 3913 + 83.48 TO STA. 3915 + 42.32 SN 022-W043

SHEET NO. SA-1 OF SA-6 SHEETS

F.A.P. RTE.	SECTION	COUNTY	TOTAL SHEETS	SHEET NO.
338	2011-036-1	DUPAGE	234	32
CONTRACT NO. 60P42				

ILLINOIS FED. AID PROJECT