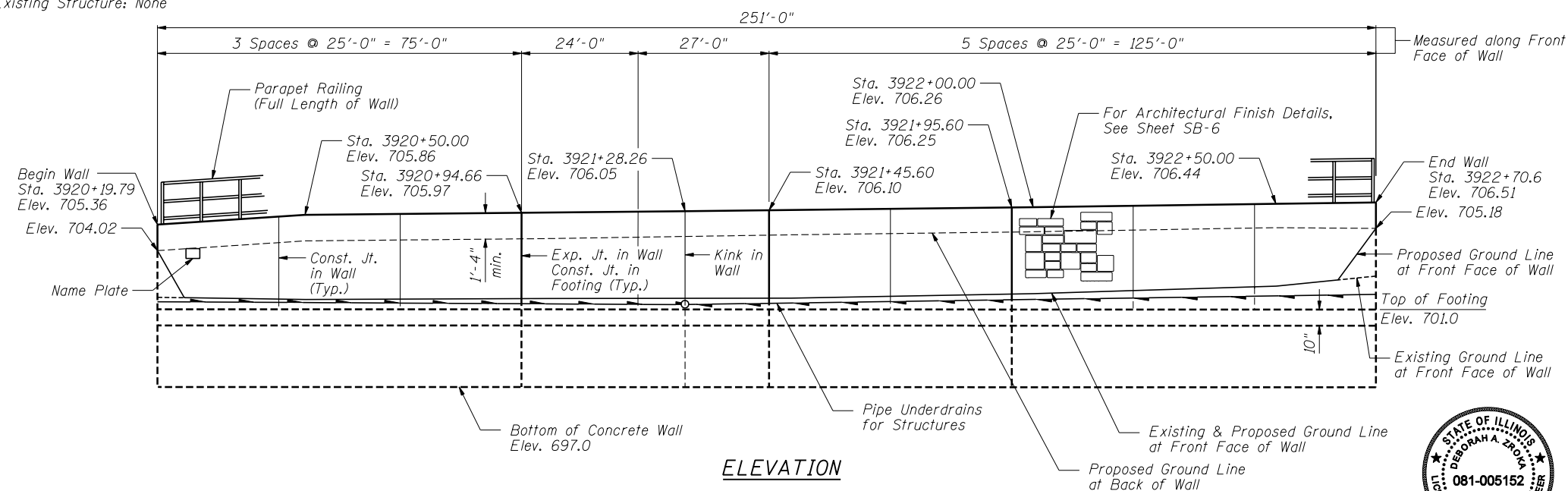


Bench Mark: Square "□" cut in east face of high tension tower base, west side of IL Rte 59, 150' south of entrance to Meijer Foods, Sta. 3923+70, 50.6' Left, Elev. 711.96

Existing Structure: None



GENERAL NOTES

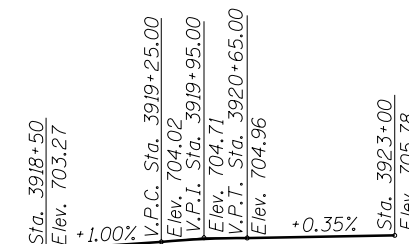
1. Reinforcement bars designated (E) shall be epoxy coated.
2. Protective coat shall be applied to exposed surfaces of the back face and top of wall.

TOTAL BILL OF MATERIAL

ITEM	UNIT	TOTAL
Structure Excavation	Cu. Yd.	291
Concrete Structures	Cu. Yd.	107.7
Protective Coat	Sq. Yd.	65
Reinforcement Bars, Epoxy Coated	Pound	8,690
Parapet Railing	Foot	251
Name Plates	Each	1
Geocomposite Wall Drain	Sq. Yd.	68
Pipe Underdrains for Structures, 4"	Foot	278
Form Liner Textured Surface	Sq. Ft.	573
Porous Granular Embankment, Special	Cu. Yd.	86



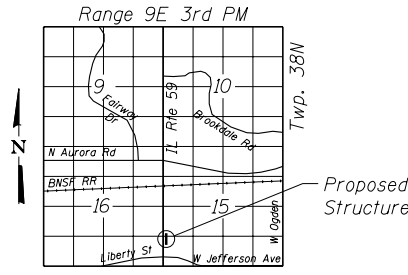
Signature: *Deborah A. Zoka*
 Date: Mar. 7, 2012
 Expires: November 30, 2012



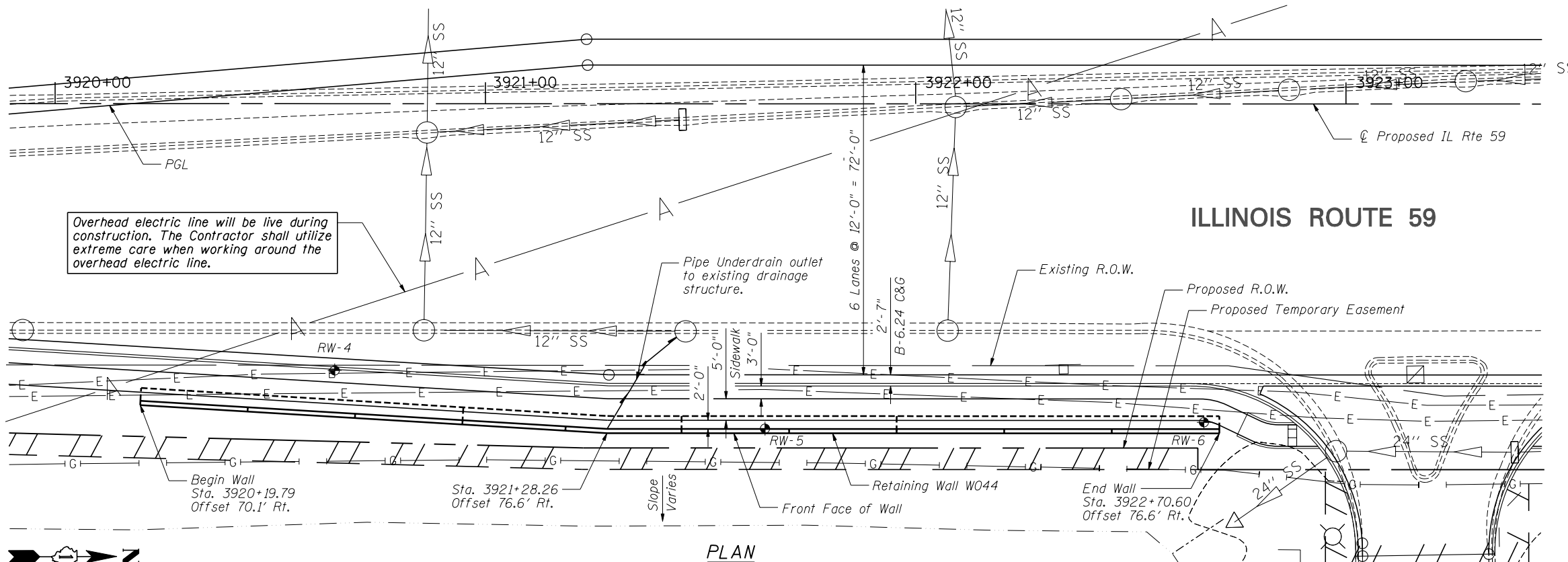
LVC = 140'
PROFILE GRADE
 (along edge of pavement proposed IL Route 59)

STATION 3920+19.79
 BUILT 201 BY
 STATE OF ILLINOIS
 F.A.P. RT. 338
 SEC. 2011-036-1
 STR. NO. 022-W044

NAME PLATE
 See Std. 515001



LOCATION SKETCH



PLAN

DESIGN SPECIFICATIONS

2002 AASHTO Standard Specifications for Highway Bridges, 17th Edition

DESIGN STRESSES

FIELD UNITS
 $f'_c = 3,500$ psi
 $f_y = 60,000$ psi (reinforcement)

INDEX OF SHEETS

- SB-1. General Plan & Elevation
- SB-2. Wall Plan & Elevation 1
- SB-3. Wall Plan and Elevation 2
- SB-4. Wall Section & Details
- SB-5. Parapet Railing
- SB-6. Architectural Finish Details
- SB-7. Boring Logs

Note:
 Offsets are measured from the ϕ Proposed IL Rte. 59 to the front face of the wall.
 Roadway work will be in future Contract 60R30.
 Buried utilities that cross SN 022-W044 will be relocated by others.

GENERAL PLAN AND ELEVATION
IL RTE 59 FAP RTE 338
SECTION 2011-036-1
DUPAGE COUNTY
STA. 3920+19.79 TO STA. 3922+70.60
SN 022-W044



USER NAME = SAW	DESIGNED - LAS	REVISED -
PLOT SCALE = 38.00' / IN.	CHECKED - DAZ	REVISED -
PLOT DATE = 5/4/2012	DRAWN - SAW	REVISED -
	CHECKED - LAS	REVISED -

STATE OF ILLINOIS
DEPARTMENT OF TRANSPORTATION

GENERAL PLAN & ELEVATION
STA. 3920+19.79 TO STA. 3922+70.60 SN 022-W044

SHEET NO. SB-1 OF SB-7 SHEETS

F.A.P. RTE.	SECTION	COUNTY	TOTAL SHEETS	SHEET NO.
338	2011-036-1	DUPAGE	234	43
CONTRACT NO. 60P42				

ILLINOIS FED. AID PROJECT