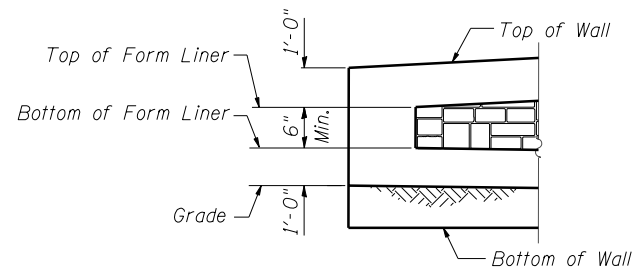
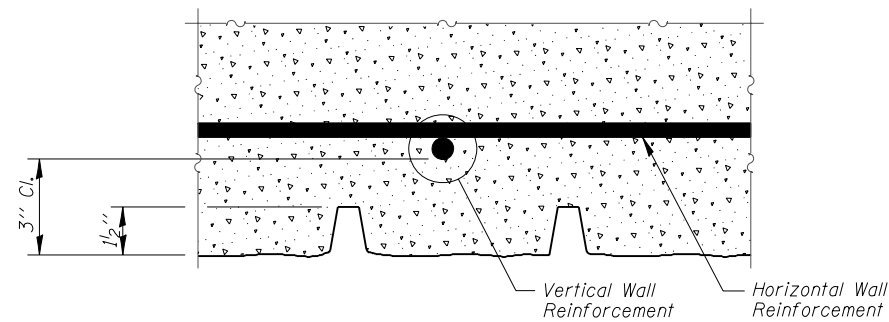


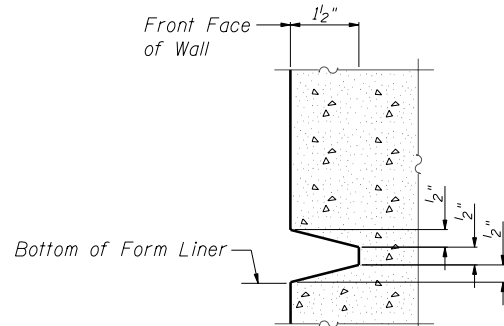
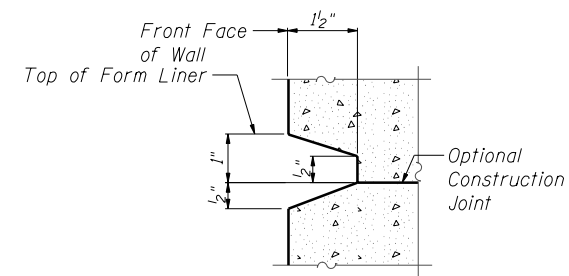
ELEVATION - FORM LINER



END FORM LINER FINISH



PLAN - FORM LINER



SECTION A-A

FORM LINER ELEVATION TABLE

Station	Form Liner Top Elevation	Form Liner Bottom Elevation
3920+19.79	None	None
3920+22.33	704.40	703.90
3920+25.30	704.45	702.59
3920+44.75	704.77	702.53
3920+50.00	704.86	702.53
3920+69.70	704.91	702.53
3920+94.66	704.97	702.55
3921+18.61	705.03	702.57
3921+28.26	705.05	702.57
3921+45.60	705.10	702.58
3921+70.60	705.17	702.67
3921+95.60	705.25	702.79
3922+00.00	705.26	702.82
3922+20.60	705.33	702.97
3922+45.60	705.42	703.09
3922+62.78	705.48	703.53
3922+67.12	705.50	705.00
3922+70.60	None	None

FILE NAME = ...60P42-W044-006-ArchF.mshdgn



Zroka Engineering, P.C.
4216 North Hermitage
Chicago, IL 60613

USER NAME = SAW	DESIGNED - LAS	REVISED -
	CHECKED - DAZ	REVISED -
PLOT SCALE = 0.1667' / IN.	DRAWN - SAW	REVISED -
PLOT DATE = 5/4/2012	CHECKED - LAS	REVISED -

**STATE OF ILLINOIS
DEPARTMENT OF TRANSPORTATION**

**ARCHITECTURAL FINISH DETAILS
STA. 3920+19.79 TO STA. 3922+70.60 SN 022-W044**

SHEET NO. SB-6 OF SB-7 SHEETS

F.A.P. RTE. 338	SECTION 2011-036-1	COUNTY DUPAGE	TOTAL SHEETS 234	SHEET NO. 48
CONTRACT NO. 60P42				
ILLINOIS FED. AID PROJECT				

**ARCHITECTURAL FINISH DETAILS
SN 022-W044**