

PLAN	SURVEYED	BY	DATE
NOTE BOOK	ALIGNED		
NO.	CHECKED		
	FILE NAME		

200 STA 3965+69.3, 87.0 LT  
 TEMPORARY MANHOLE, 5' DIA.  
 TYPE 1 FRAME, CLOSED LID  
 RIM EL 699.17  
 INV EL 691.90 (N) 30"  
 INV EL 691.90 (E) 30"  
 INV EL 692.10 (W) 12"

202 STA 3969+95.9, 82.0 LT  
 TEMPORARY MANHOLE, 5' DIA.  
 TYPE 1 FRAME, CLOSED LID  
 RIM EL 699.72  
 INV EL 692.33 (E) 30"  
 INV EL 692.33 (S) 30"

204 STA 3963+91.2, 70.6 LT  
 EXISTING MANHOLE, 5' DIA.  
 RIM EL 696.91  
 INV EL 691.73 (N) 30"  
 INV EL 691.73 (S) 30"

206 STA 3971+92.9, 43.4 LT  
 EXISTING MANHOLE, 5' DIA.  
 RIM EL 701.64  
 INV EL 692.51 (N) 30"  
 INV EL 692.51 (S) 30"

200 14' - 30" P CUL CL C TY 1 TEMP @ 0.10%  
 201 149' - 30" P CUL CL C TY 1 TEMP @ 0.10%  
 202 269' - 30" P CUL CL C TY 1 TEMP @ 0.10%  
 203 28' - 30" P CUL CL C TY 2 TEMP @ 0.10%

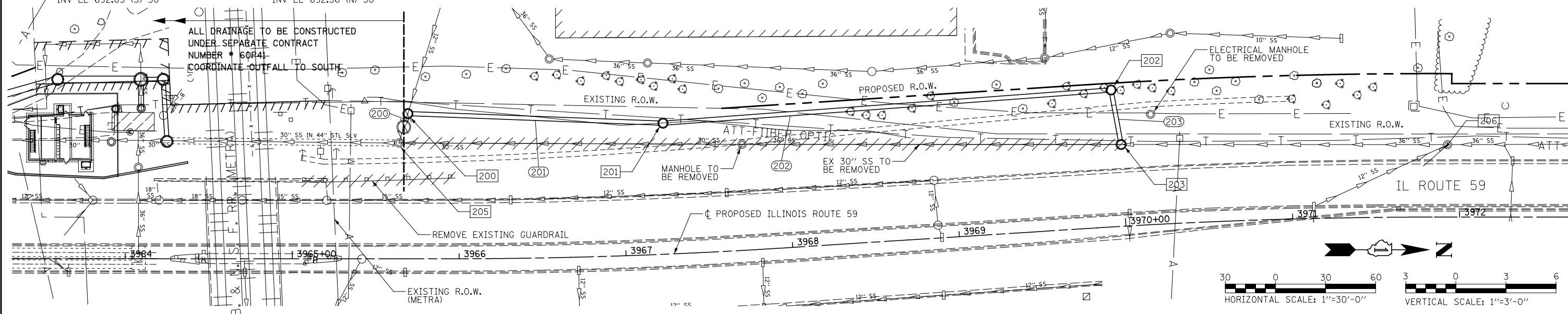
REMOVING MANHOLES  
 3967+71.8, 63.5 LT  
 3970+19.0, 66.1 LT

STORM SEWER REMOVAL - 12"  
 STA 3965+65.0 TO 3965+70 - 19'  
 STORM SEWER REMOVAL - 30"  
 STA 3965+66.4 TO 3969+97.3 - 428'  
 REMOVING GUARDRAIL  
 STA 3965+06.4 TO 3965+97.7 - 92'

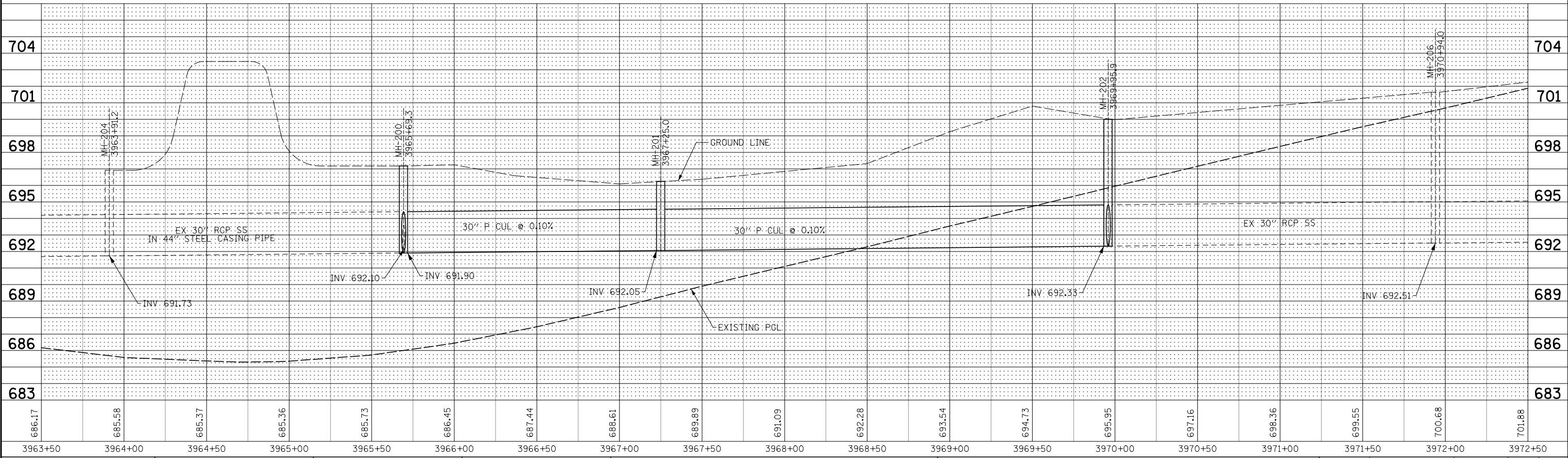
201 STA 3967+25.0, 78.5 LT  
 TEMPORARY MANHOLE, 5' DIA.  
 TYPE 1 FRAME, CLOSED LID  
 RIM EL 695.70  
 INV EL 692.05 (N) 30"  
 INV EL 692.05 (S) 30"

203 STA 3970+00.0, 49.0 LT  
 TEMPORARY MANHOLE, 5' DIA.  
 TYPE 1 FRAME, CLOSED LID  
 RIM EL 697.30  
 INV EL 692.36 (W) 30"  
 INV EL 692.36 (N) 30"

205 STA 3965+63.9, 69.4 LT  
 EXISTING MANHOLE, 5' DIA.  
 RIM EL 696.20  
 INV EL 691.90 (N) 30"  
 INV EL 691.90 (S) 30"



PROFILE	SURVEYED	BY	DATE
NOTE BOOK	GRADES CHECKED		
NO.	STRUCTURE	NOT AT THIS CHWD	



FILE NAME =	USER NAME = *USER*	DESIGNED NAV	REVISED	STATE OF ILLINOIS DEPARTMENT OF TRANSPORTATION	DRAINAGE PLAN / PROFILE - SN 022-W046 STAGE 1	F.A.P. RTE.	SECTION	COUNTY	TOTAL SHEETS	SHEET NO.	
*FILEL*		DRAWN KES	REVISED			338	2011-036-1	DUPAGE	234	71	
		CHECKED PJO	REVISED			CONTRACT NO. 60P42					
		DATE 05-11-12	REVISED			FED. ROAD DIST. NO. ILLINOIS FED. AID PROJECT					