

PLAN	SURVEYED	DATE
	PLOTTED	BY
	NOTE BOOK	
	ALIGNMENT CHECKED	
	STRUCTURE CHECKED	
	CADD FILE NAME	
	NO.	

210 STA 3965+66.9, 79.0 LT
EXISTING MANHOLE, 7' DIA.
RIM EL 698.00
INV EL 691.85 (N) 48"
INV EL 691.85 (S) 48"
INV EL ????.?? (W) ?"

212 STA 3970+15.0, 78.5 LT
MANHOLE TYPE A, 6' DIA.
TYPE 1 FRAME, CLOSED LID
RIM EL 700.33
INV EL 692.34 (N) 48"
INV EL 692.34 (S) 48"

214 STA 3971+36.0, 43.8 LT
MANHOLE TYPE A, 5' DIA.
TYPE 1 FRAME, CLOSED LID
RIM EL 699.68
INV EL 692.46 (SW) 30"
INV EL 692.46 (N) 30"

216 STA 3963+88.4, 64.5 LT
EXISTING MANHOLE, 5' DIA.
RIM EL 701.64
INV EL 691.62 (W) 48"
INV EL 691.62 (N) 48"

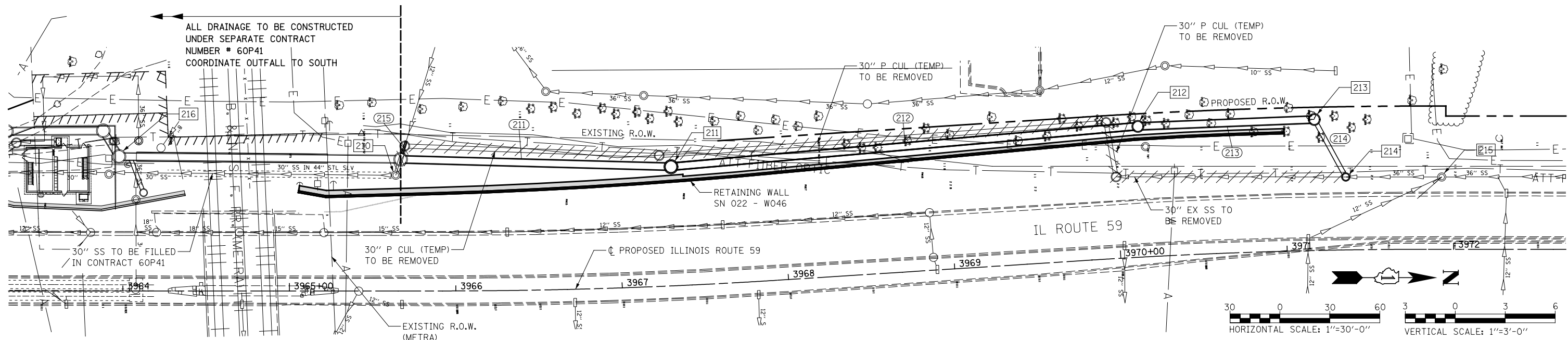
211 158' - 48" SS CLASS A, TYPE 1 @ 0.10%
212 277' - 48" SS CLASS A, TYPE 1 @ 0.10%
213 102' - 48" SS CLASS A, TYPE 2 @ 0.10%
214 34' - 30" P CUL CL C TY 2 TEMP @ 0.10%
215 8' - 12" SS CL A TY 2 @ 0.10%

STORM SEWER REMOVAL - 30"
STA 3970+03.0 TO 3971+39.9 - 138'

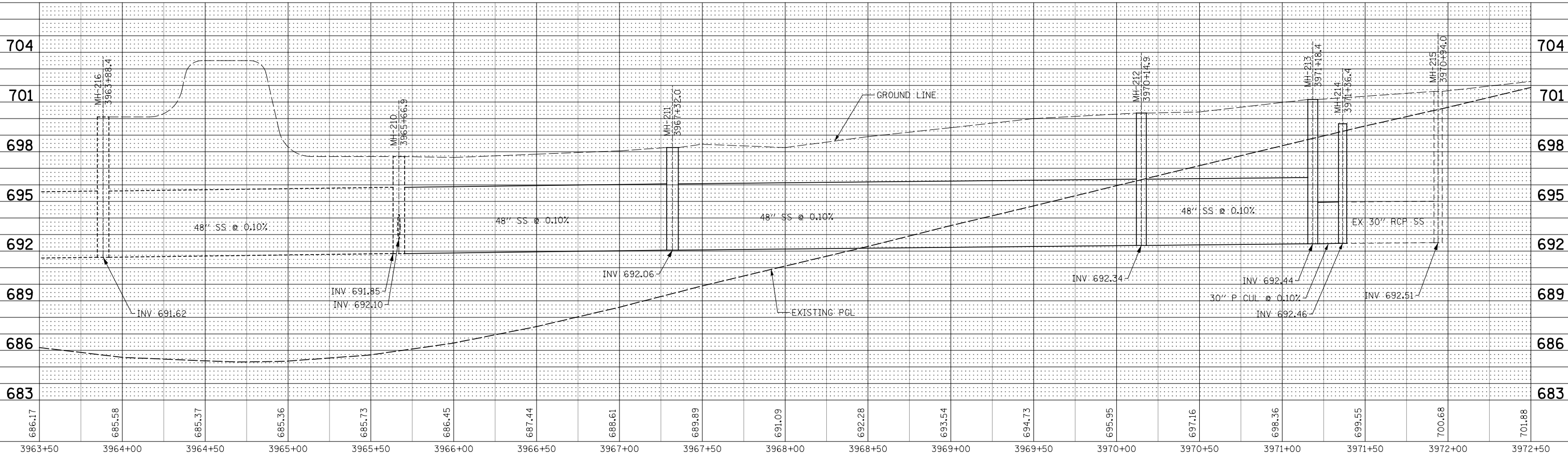
211 STA 3967+32.0, 71.5 LT
MANHOLE TYPE A, 7' DIA.
TYPE 1 FRAME, CLOSED LID
RIM EL 698.38
INV EL 692.06 (N) 48"
INV EL 692.06 (S) 48"

213 STA 3971+18.0, 78.5 LT
MANHOLE TYPE A, 6' DIA.
TYPE 1 FRAME, CLOSED LID
RIM EL 701.15
INV EL 692.44 (S) 48"
INV EL 692.44 (NE) 30"

215 STA 3971+92.9, 43.4 LT
EXISTING MANHOLE, 5' DIA.
RIM EL 701.64
INV EL 692.51 (N) 30"
INV EL 692.51 (S) 30"



PROFILE	SURVEYED	DATE
	PLOTTED	BY
	GRADES CHECKED	
	STRUCTURE CHECKED	
	NOT AT THIS OFFICE	
	NO.	



FILE NAME =	USER NAME = *USER*	DESIGNED NAV	REVISED	STATE OF ILLINOIS DEPARTMENT OF TRANSPORTATION	DRAINAGE PLAN / PROFILE - SN 022-W046 STAGE 2	F.A.P. RTE.	SECTION	COUNTY	TOTAL SHEETS	SHEET NO.	
FILE.L		DRAWN KES	REVISED			338	2011-036-1	DUPAGE	234	72	
		CHECKED PJO	REVISED			CONTRACT NO. 60P42					
		DATE 05-11-12	REVISED			ILLINOIS FED. AID PROJECT					