

Bench Mark: Square "□" cut in west face of high tension tower base, east side of IL Rte 59
Sta. 3905+18, 79' Rt., Elev. 696.82

Existing Structure: None

DESIGN SPECIFICATIONS

2002 AASHTO Standard Specifications
For Highway Bridges, 17th Edition

DESIGN STRESSES

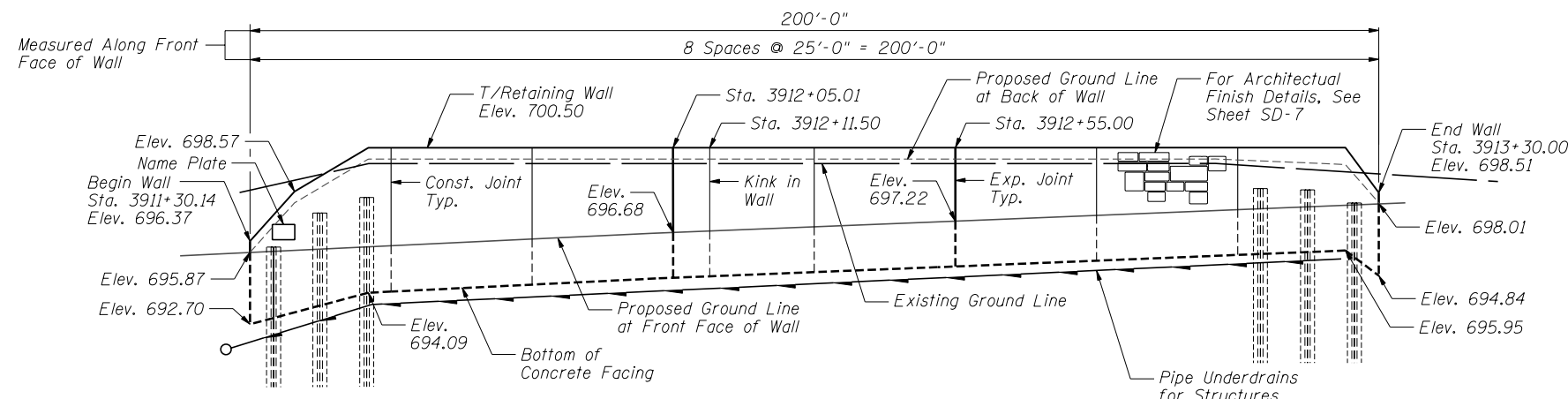
FIELD UNITS
 $f'_c = 3,500$ psi
 $f_y = 60,000$ psi (reinforcement)
 $f_y = 36,000$ psi (M270 Grade 36)

INDEX OF SHEETS

- SD-1. General Plan and Elevation
- SD-2. Soldier Pile Layout
- SD-3. Typical Section
- SD-4. Details
- SD-5. Concrete Facing
- SD-6. Concrete Facing & Details
- SD-7. Architectural Finish Details
- SD-8. Boring Logs

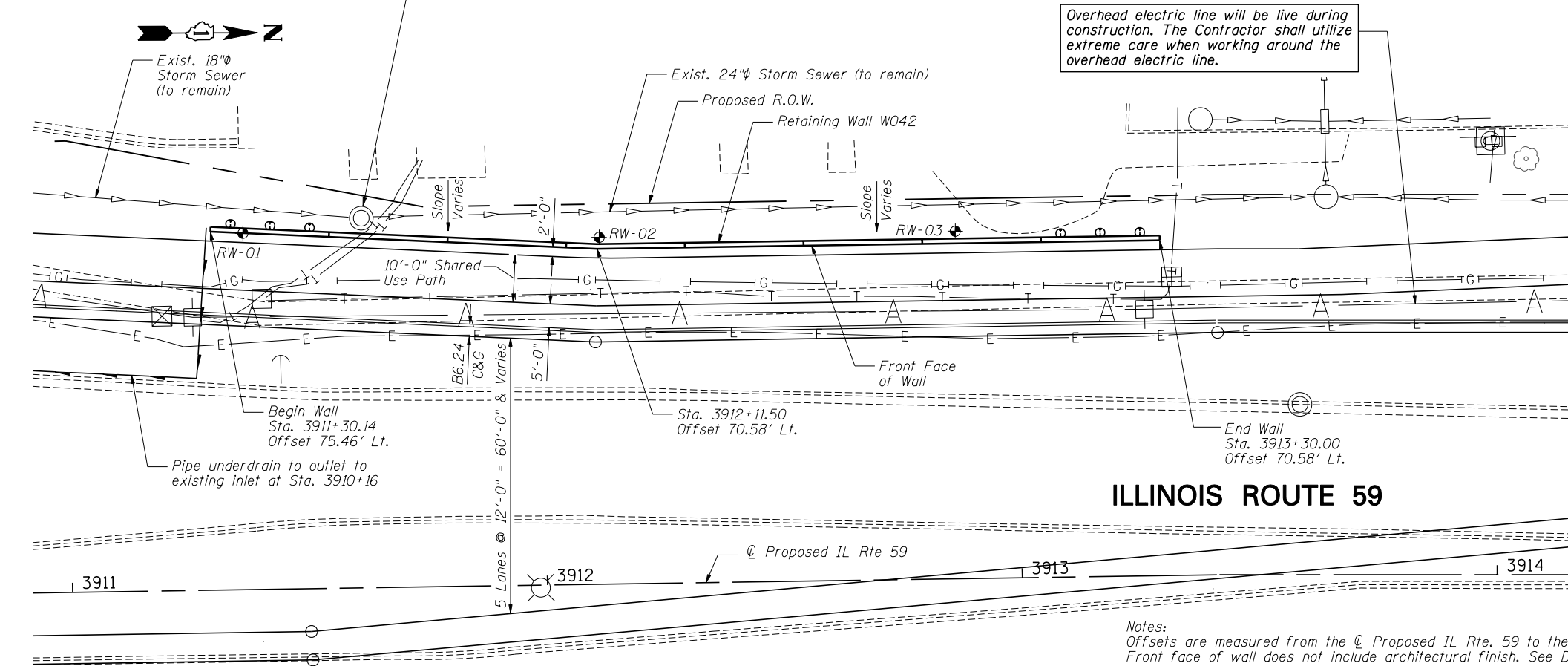
GENERAL NOTES

1. Reinforcement bars designated (E) shall be epoxy coated.
2. The Contractor is responsible for the design and performance of the lagging using no less than 3" nominal rough-sawn thickness and timber with a minimum allowable bending stress of 1000 psi.
3. Protective coat shall be applied to exposed surfaces of the front face of wall and top of wall.



ELEVATION

Contractor to verify location of existing drainage structure to remain and determine if the proposed retaining wall can be constructed with the existing drainage structure in its current location. In the event the wall cannot be constructed with the existing drainage structure in its current location, the Contractor shall notify the Engineer and obtain the Engineer's approval to relocate the existing drainage structure. If approved by the Engineer, payment for the relocation of the existing drainage structure shall be in accordance with Article 109.04 of the Standard Specifications.



PLAN

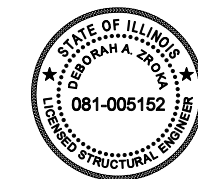
Notes:
Offsets are measured from the CL Proposed IL Rte. 59 to the front face of the wall. Front face of wall does not include architectural finish. See Detail on Sheet SD-3.
Soldier piles not shown for clarity.
Roadway work will be in future Contract 60R30.
Buried utilities that cross SN 022-W042 will be relocated by others.

STATION 3911+30.14
BUILT 2011 BY
STATE OF ILLINOIS
F.A.P. RT. 338
SEC. 2011-036-1
STR. NO. 022-W042

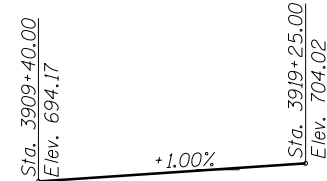
NAME PLATE
See Std. 515001

TOTAL BILL OF MATERIAL

ITEM	UNIT	TOTAL
Structure Excavation	Cu. Yd.	226
Concrete Structures	Cu. Yd.	45.2
Protective Coat	Sq.Yd.	112
Stud Shear Connectors	Each	114
Reinforcement Bars, Epoxy Coated	Pound	5,190
Name Plates	Each	1
Geocomposite Wall Drain	Sq. Yd.	63
Untreated Timber Lagging	Sq. Ft.	743
Furnishing Soldier Piles (W Section)	Foot	480
Pipe Underdrains for Structures, 4"	Foot	343
Drilling and Setting Soldier Piles (In Soil)	Cu. Ft.	1,605
Form Liner Textured Surface	Sq. Ft.	339

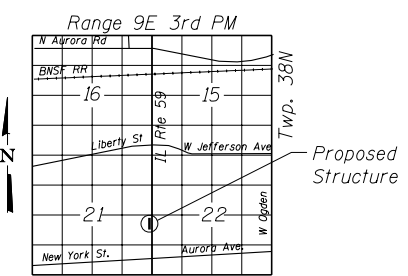


Signature: *Deborah A. Zola* Date: March 7, 2012
November 30, 2012
Expires



PROFILE GRADE

(along CL proposed IL Route 59)



LOCATION SKETCH

GENERAL PLAN AND ELEVATION
IL RTE 59 FAP RTE 338
SECTION 2011-036-1
DUPAGE COUNTY
STA. 3911+30.14 TO STA. 3913+30.00
SN 022-W042



USER NAME = SAW	DESIGNED - LAS	REVISED -
PLOT SCALE = 3/8" = 1' IN.	CHECKED - DAZ	REVISED -
PLOT DATE = 5/11/2012	DRAWN - SAW	REVISED -
	CHECKED - LAS	REVISED -

STATE OF ILLINOIS
DEPARTMENT OF TRANSPORTATION

GENERAL PLAN & ELEVATION
STA. 3911+30.14 TO STA. 3913+30.00 SN 022-W042
SHEET NO. SD-1 OF SD-8 SHEETS

F.A.P. RTE.	SECTION	COUNTY	TOTAL SHEETS	SHEET NO.
338	2011-036-1	DUPAGE	234	88
CONTRACT NO. 60P42				

ILLINOIS FED. AID PROJECT