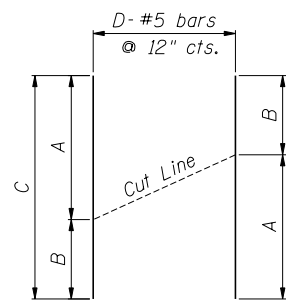
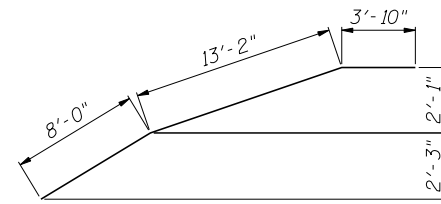


SECTION THRU  
CONCRETE FACING

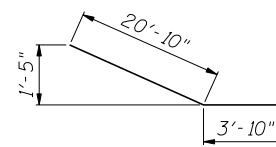


CUTTING DIAGRAM

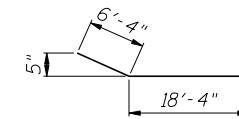
Bar	A	B	C	D
h <sub>101</sub> (E)	11'-7"	21'-2"	32'-9"	3
v <sub>100</sub> (E)	3'-4"	4'-10"	8'-2"	8
v <sub>101</sub> (E)	5'-0"	6'-0"	11'-0"	13
v <sub>109</sub> (E)	4'-3"	3'-4"	7'-7"	7



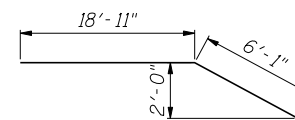
BAR h<sub>100</sub> (E)



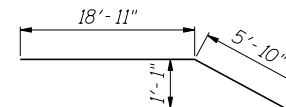
BAR h<sub>104</sub> (E)



BAR h<sub>106</sub> (E)



BAR h<sub>107</sub> (E)



BAR h<sub>108</sub> (E)

BILL OF MATERIAL

Bar	No.	Size	Length	Shape
h <sub>100</sub> (E)	2	#5	25'-0"	
h <sub>101</sub> (E)	3	#5	32'-9"	—
h <sub>102</sub> (E)	6	#5	24'-8"	—
h <sub>103</sub> (E)	2	#5	10'-2"	—
h <sub>104</sub> (E)	2	#5	24'-8"	
h <sub>105</sub> (E)	66	#5	28'-8"	—
h <sub>106</sub> (E)	14	#5	24'-8"	
h <sub>107</sub> (E)	10	#5	25'-0"	
h <sub>108</sub> (E)	2	#5	24'-9"	
v <sub>100</sub> (E)	8	#5	8'-2"	—
v <sub>101</sub> (E)	13	#5	11'-0"	—
v <sub>102</sub> (E)	62	#5	5'-9"	—
v <sub>103</sub> (E)	52	#5	5'-6"	—
v <sub>104</sub> (E)	52	#5	5'-3"	—
v <sub>105</sub> (E)	52	#5	5'-0"	—
v <sub>106</sub> (E)	52	#5	4'-8"	—
v <sub>107</sub> (E)	52	#5	4'-5"	—
v <sub>108</sub> (E)	38	#5	4'-3"	—
v <sub>109</sub> (E)	7	#5	7'-7"	—
Item		Unit	Quantity	
Concrete Structures		Cu. Yd.	45.2	
Reinforcement Bars, Epoxy Coated		Pound	5,190	
Pipe Underdrains for Structures, 4"		Foot	343	
Geocomposite Wall Drain		Sq. Yd.	63	

CONCRETE FACING & DETAILS  
SN 022-W042

FILE NAME = ...EGP42-W042-006-ConcreteFacing2.dgn



Zroka Engineering, P.C.  
4216 North Hermitage  
Chicago, IL 60613

USER NAME = SAW  
PLOT SCALE = 10.0000 "/ IN.  
PLOT DATE = 5/10/2012

DESIGNED - LAS  
CHECKED - DAZ  
DRAWN - SAW  
CHECKED - LAS

REVISED -  
REVISED -  
REVISED -  
REVISED -

STATE OF ILLINOIS  
DEPARTMENT OF TRANSPORTATION

CONCRETE FACING & DETAILS  
STA. 3911 + 30.14 TO STA. 3913 + 30.00 SN 022-W042

SHEET NO. SD-6 OF SD-8 SHEETS

F.A.P. RTE.	SECTION	COUNTY	TOTAL SHEETS	SHEET NO.
338	2011-036-1	DUPAGE	234	93
CONTRACT NO. 60P42				
ILLINOIS FED. AID PROJECT				