

Bench Mark: Square "□" cut in west side of light pole base at northwest corner of Chase Bank located at southeast corner of IL Rte 59 and Brookdale Road, Sta. 4012+67. 79' Right, Elev. 714.28

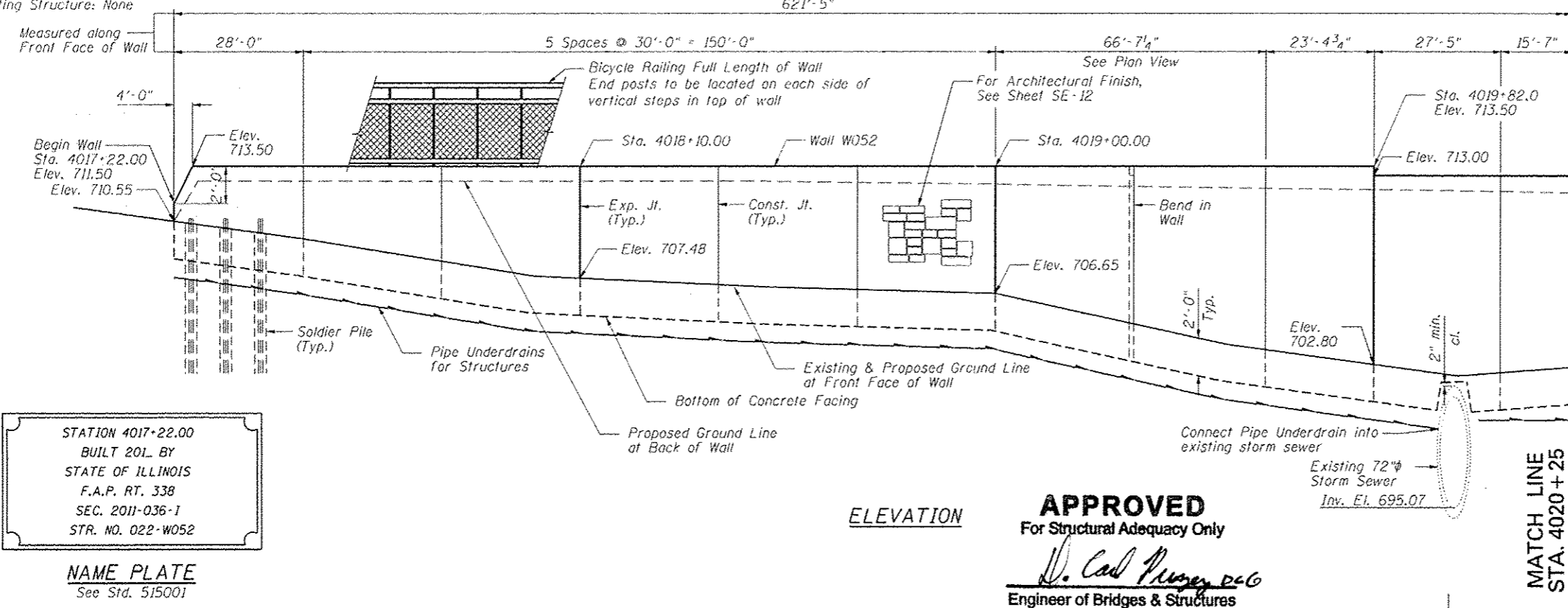
Existing Structure: None

INDEX OF SHEETS

- SE-1. General Plan & Elevation
- SE-2. General Plan & Elevation 2
- SE-3. Soldier Pile Layout 1
- SE-4. Soldier Pile Layout 2
- SE-5. Typical Section
- SE-6. Details
- SE-7. Concrete Facing 1
- SE-8. Concrete Facing 2
- SE-9. Concrete Facing 3
- SE-10. Concrete Facing & Details
- SE-11. Bicycle Railing
- SE-12. Architectural Finish Details
- SE-13. Boring Logs 1
- SE-14. Boring Logs 2



Deborah A. Zerk
 Signature Date
 November 30, 2012
 Expires



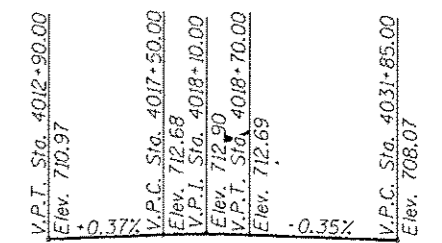
STATION 4017+22.00
 BUILT 201 BY
 STATE OF ILLINOIS
 F.A.P. RT. 338
 SEC. 2011-036-1
 STR. NO. 022-W052

NAME PLATE
 See Std. 515001

ELEVATION

APPROVED
 For Structural Adequacy Only
D. Carl Pusey, P.E.
 Engineer of Bridges & Structures

MATCH LINE
 STA. 4020+25



PROFILE GRADE

(along inside edge of pavement, proposed IL Route 59)

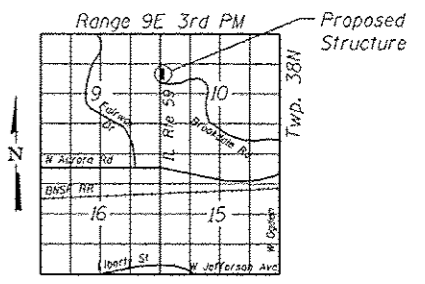
DESIGN SPECIFICATIONS

2002 AASHTO Standard Specifications for Highway Bridges, 17th Edition

DESIGN STRESSES

FIELD UNITS

- $f'_c = 3,500$ psi
- $f_y = 60,000$ psi (reinforcement)
- $f_y = 36,000$ psi (M270 Grade 36)



LOCATION SKETCH

GENERAL PLAN & ELEVATION

IL RTE 59 FAP RTE 338

SECTION 2011-036-1

DUPAGE COUNTY

STA. 4017+22.00 TO STA. 4023+28.14

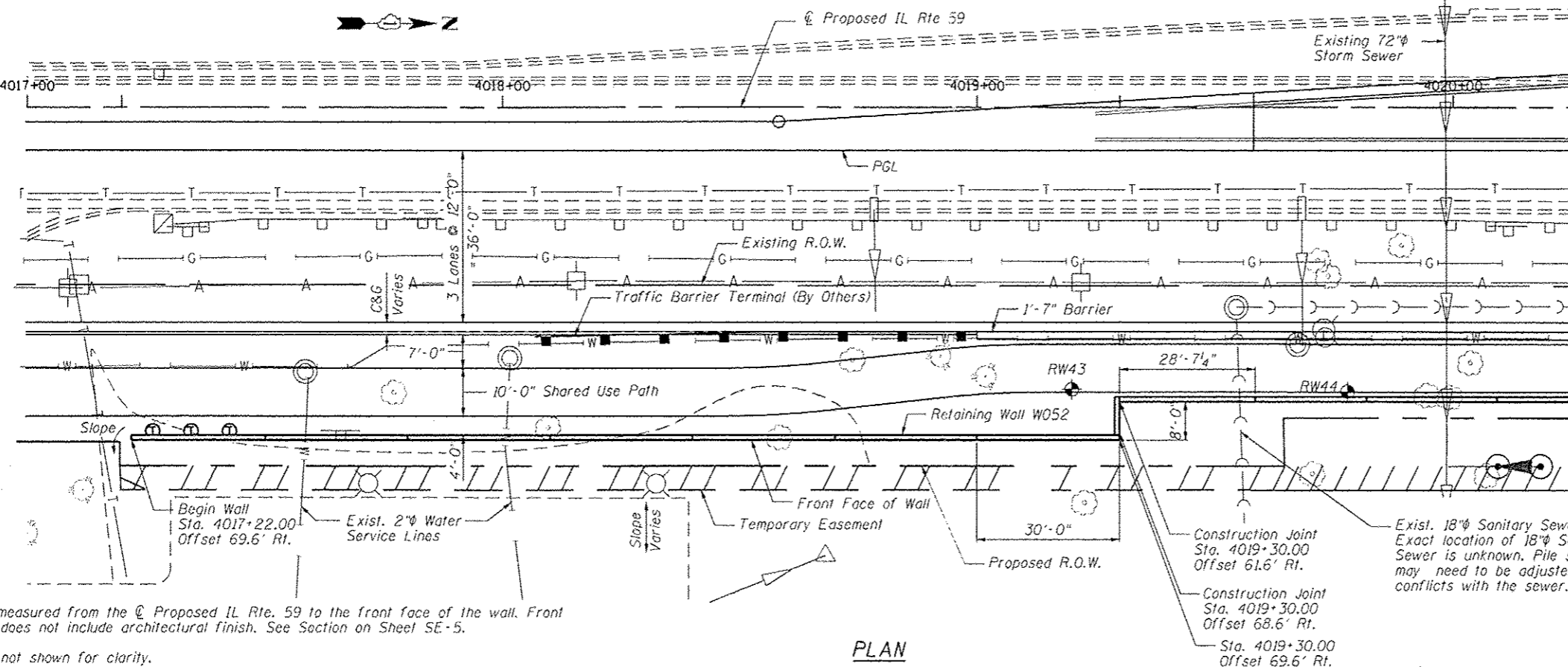
SN 022-W052

Rev. 7-24-12

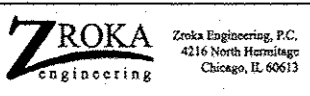
Note: Offsets are measured from the \odot Proposed IL Rte. 59 to the front face of the wall. Front face of wall does not include architectural finish. See Section on Sheet SE-5.

Soldier piles not shown for clarity.

Roadway work will be in future Contract 60R31.



PLAN



USER NAME - SAW	DESIGNED - LAS	REVISIONS
PL01 SCALE - 3/8" = 1' IN.	CHECKED - OAZ	REVISIONS
PL01 DATE - 7/10/2012	DRAWN - SAW	REVISIONS
	CHECKED - LAS	REVISIONS

STATE OF ILLINOIS
 DEPARTMENT OF TRANSPORTATION

GENERAL PLAN & ELEVATION
 STA. 4017+22.00 TO STA. 4023+28.14 SN 022-W052

SHEET NO. SE-1 OF SE-14 SHEETS

F.A.P. RTE.	SECTION	COUNTY	TOTAL SHEETS	SHEET NO.
338	2011-036-1	DUPAGE	234	111
			CONTRACT NO. 60P42	
ILLINOIS FED. AID PROJECT				