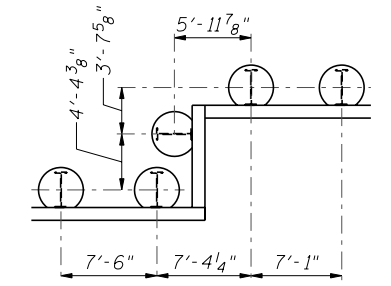


DEVELOPED ELEVATION

PILE SUMMARY

Pile No.	Station	Offset to $\phi$ Pile	Pile Designation	Length	Bottom Elevation	Top Elevation	Pile No.	Station	Offset to $\phi$ Pile	Pile Designation	Length	Bottom Elevation	Top Elevation	Pile No.	Station	Offset to $\phi$ Pile	Pile Designation	Length	Bottom Elevation	Top Elevation	
1	4017+25.75	67.84	W18x86	24'-0"	686.75	710.75	18	4018+51.25	67.84	W18x86	24'-0"	686.75	710.75	35	4019+67.44	59.21	W33x141	31'-0"	679.75	710.75	
2	4017+32.25	67.84	W18x86	24'-0"	686.75	710.75	19	4018+58.75	67.84	W18x86	24'-0"	686.75	710.75	36	4019+73.27	59.21	W33x141	31'-0"	679.75	710.75	
3	4017+38.75	67.84	W18x86	24'-0"	686.75	710.75	20	4018+66.25	67.84	W18x86	24'-0"	686.75	710.75	37	4019+79.11	59.21	W33x141	31'-0"	679.75	710.75	
4	4017+46.25	67.84	W18x86	24'-0"	686.75	710.75	21	4018+73.75	67.84	W18x86	24'-0"	686.75	710.75	38	4019+85.75	59.10	W36x160	32'-0"	678.25	710.25	
5	4017+53.75	67.84	W18x86	24'-0"	686.75	710.75	22	4018+81.25	67.84	W18x86	24'-0"	686.75	710.75	39	4019+92.67	59.10	W36x160	32'-0"	678.25	710.25	
6	4017+61.25	67.84	W18x86	24'-0"	686.75	710.75	23	4018+88.75	67.84	W18x86	24'-0"	686.75	710.75	40	4020+05.67	59.10	W36x160	32'-0"	678.25	710.25	
7	4017+68.75	67.84	W18x86	24'-0"	686.75	710.75	24	4018+96.25	67.84	W18x86	24'-0"	686.75	710.75	41	4020+12.25	59.10	W36x160	32'-0"	678.25	710.25	
8	4017+76.25	67.84	W18x86	24'-0"	686.75	710.75	25	4019+03.75	67.22	W33x141	31'-0"	679.75	710.75	42	4020+18.00	59.10	W36x160	32'-0"	678.25	710.25	
9	4017+83.75	67.84	W18x86	24'-0"	686.75	710.75	26	4019+11.25	67.22	W33x141	31'-0"	679.75	710.75	43	4020+23.75	59.10	W36x160	32'-0"	678.25	710.25	
10	4017+91.25	67.84	W18x86	24'-0"	686.75	710.75	27	4019+18.75	67.22	W33x141	31'-0"	679.75	710.75	44	4020+29.50	59.10	W36x160	32'-0"	678.25	710.25	
11	4017+98.75	67.84	W18x86	24'-0"	686.75	710.75	28	4019+26.25	67.22	W33x141	31'-0"	679.75	710.75	45	4020+36.08	59.10	W36x160	32'-0"	678.25	710.25	
12	4018+06.25	67.84	W18x86	24'-0"	686.75	710.75	29	4019+27.62	62.85	W33x141	31'-0"	679.75	710.75	46	4020+52.58	59.10	W36x160	32'-0"	678.25	710.25	
13	4018+13.75	67.84	W18x86	24'-0"	686.75	710.75	30	4019+33.61	59.21	W33x141	31'-0"	679.75	710.75	47	4020+69.08	59.10	W36x160	32'-0"	678.25	710.25	
14	4018+21.25	67.84	W18x86	24'-0"	686.75	710.75	31	4019+40.69	59.21	W33x141	31'-0"	679.75	710.75	48	4020+77.42	59.10	W36x160	32'-0"	678.25	710.25	
15	4018+28.75	67.84	W18x86	24'-0"	686.75	710.75	32	4019+47.77	59.21	W33x141	31'-0"	679.75	710.75	49	4020+85.75	59.10	W36x160	32'-0"	678.25	710.25	
16	4018+36.25	67.84	W18x86	24'-0"	686.75	710.75	33	4019+54.86	59.21	W33x141	31'-0"	679.75	710.75								
17	4018+43.75	67.84	W18x86	24'-0"	686.75	710.75	34	4019+61.61	59.21	W33x141	31'-0"	679.75	710.75								



DETAIL 1

- Notes:
- All offsets are to the right of  $\phi$  IL Rte. 59
  - The distance from Pile 28 to Pile 29 along the front face of wall is 10'-6". The distance from Pile 29 to Pile 30 along the front face of wall is 4'-10 1/4".
  - See Sheet SE-4 for Bill of Material.

**SOLDIER PILE LAYOUT 1**  
SN 022-W052



USER NAME = SAW	DESIGNED - LAS	REVISED -
	CHECKED - DAZ	REVISED -
PLOT SCALE = 3/8" = 1' / IN.	DRAWN - SAW	REVISED -
PLOT DATE = 5/4/2012	CHECKED - LAS	REVISED -

STATE OF ILLINOIS  
DEPARTMENT OF TRANSPORTATION

**SOLDIER PILE LAYOUT 1**  
STA. 4017+22.00 TO STA. 4023+28.14 SN 022-W052

SHEET NO. SE-3 OF SE-14 SHEETS

F.A.P. RTE. 338	SECTION 2011-036-1	COUNTY DUPAGE	TOTAL SHEETS 234	SHEET NO. 113
CONTRACT NO. 60P42				
ILLINOIS FED. AID PROJECT				