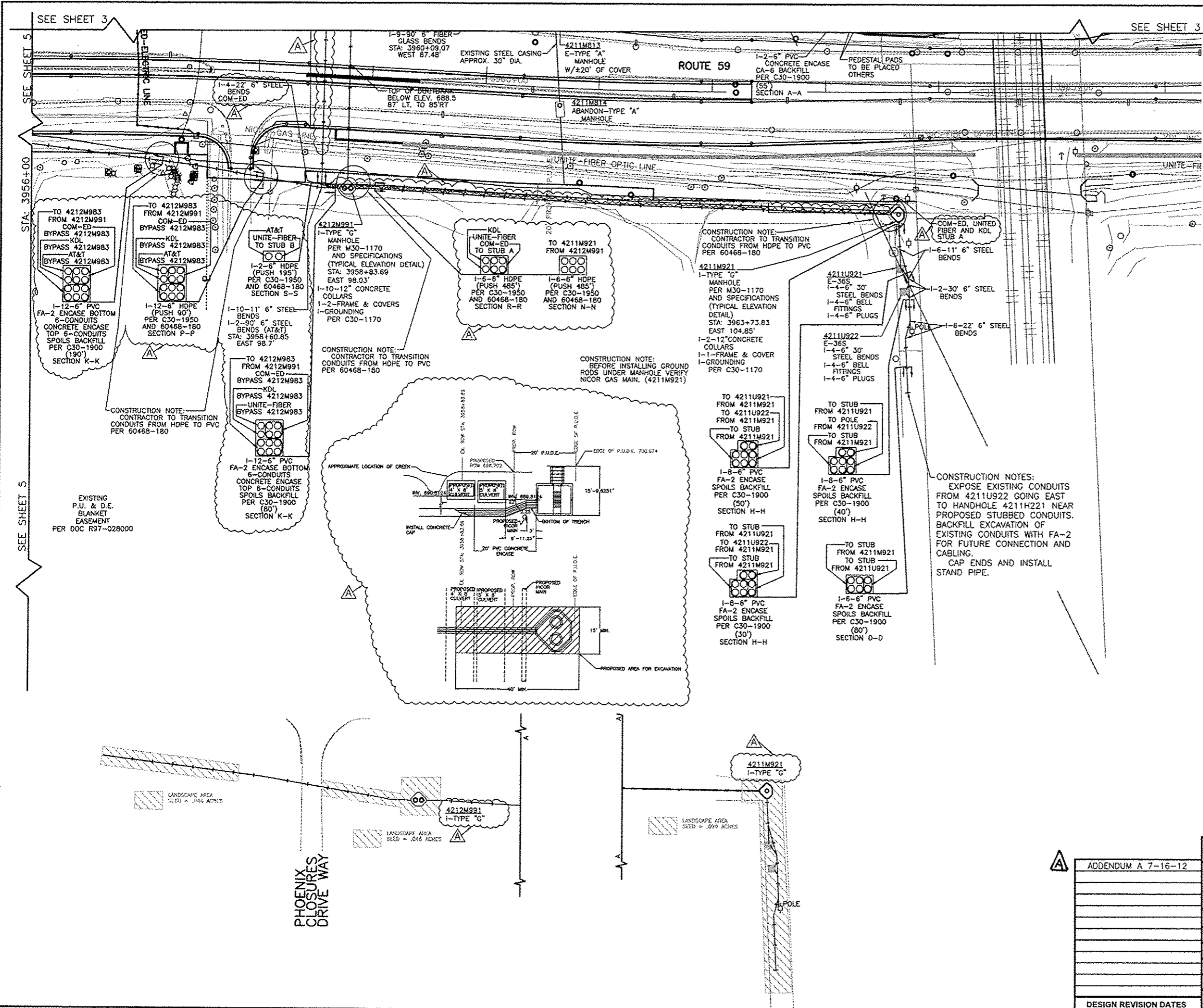
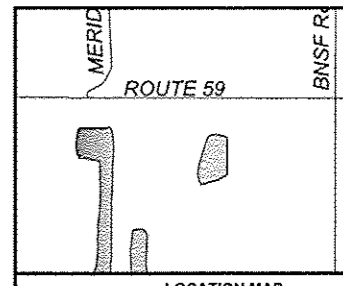


F.A. RTE. 338/IL 59	SECTION 2011-050-1	COUNTY DUPAGE	TOTAL SHEETS 0	SHEET NO. 3
STA. _____ TO STA. _____		FED. ROAD DIST. NO. ILLINOIS CONTRACT 60P42		



LEGEND

- EXISTING UNDERGROUND**
- E-SW. VAULT
 - E-SW. MOD.
 - E-TRANSFORMER
 - E-TYPE "A" MANHOLE
 - E-TYPE "C" MANHOLE
 - E-TYPE "C" DOUBLE OPENING MANHOLE
 - E-TYPE "D" MANHOLE
 - E-TYPE "E" MANHOLE
 - E-CONDUIT
- OVERHEAD**
- E-DISTRIBUTION/TRANSMISSION POLE
- INSTALL UNDERGROUND**
- I-SW. VAULT
 - I-TRANSFORMER VAULT
 - I-TYPE "A" MANHOLE
 - I-TYPE "E" DOUBLE OPENING MANHOLE
 - I-TYPE "G" DOUBLE OPENING MANHOLE
 - I-TYPE "G" SINGLE OPENING MANHOLE
 - I-CONDUIT
- ABANDON UNDERGROUND**
- A-CONDUIT



CALL JULIE 48 HRS. PRIOR TO CONSTRUCTION
1-800-892-0123 OR CALL 811

NOTES:
 1. THE PROJECT ENGINEER FOR THIS JOB IS BRIAN CHAMBERLAIN AT (830)420-8853.
 2. THE PROJECT COORDINATOR FOR THIS PROJECT IS PAUL MICHALOWSKI AT (830)305-5227.
 3. CONTRACTOR IS RESPONSIBLE FOR MANHOLE PHOTOS TAKEN OF ALL CLEARLY MARKED CABLE AND ALL WALLS OF MANHOLES. PHOTOS WILL BE GIVEN TO THE GIS GROUP WITH THE AS-BUILTS.

PROJECT TITLE ROUTE 59 ROAD IMPROVEMENTS			
PROJECT DESCRIPTION TO RELOCATE AND INSTALL NEW DUCTBANK AND 34KV FEEDERS			
OWNER BCC	DRAWING DATE 5-11-12	APP # 4211,4212,4223	SCALE 1 = 40
DESIGNED BY DL	CHECKED BY PSM	DATE FOR REVISION # N/A	PROJECT # EU-12
CHECKED BY	APPROVED BY	GIS FILE # 0060468001C4.DWG	SHEET # 4 OF 63
DESIGN REVISION DATES			WORK NUMBER # 60468

