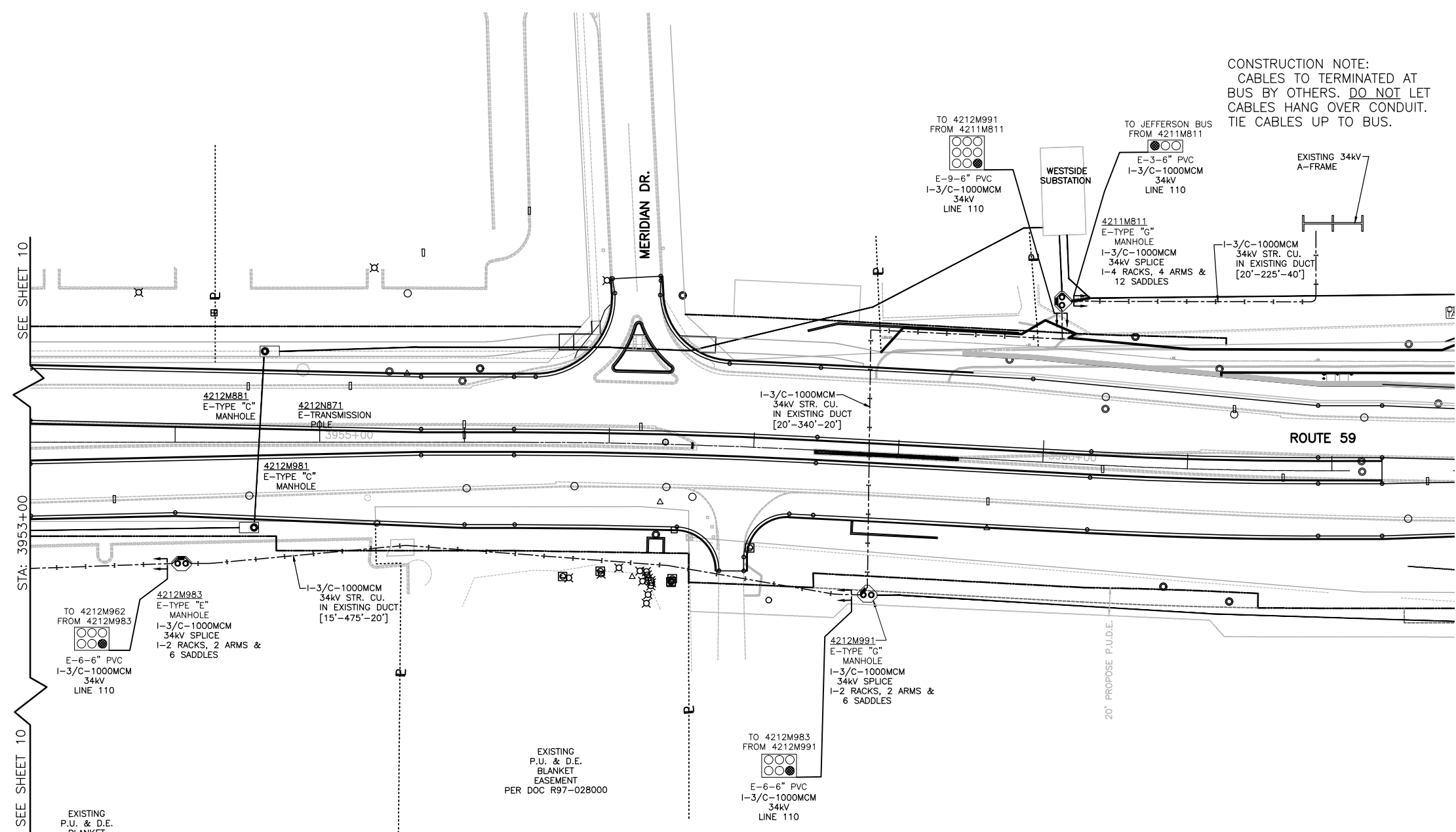


F.A. RTE. 338/IL 59	SECTION -2011-036-1-	COUNTY DUPAGE	TOTAL SHEETS 0	SHEET NO. 3
STA.		TO STA.		
FED. ROAD DIST. NO.	ILLINOIS	CONTRACT 60P42		

CONSTRUCTION NOTE:
CABLES TO TERMINATED AT
BUS BY OTHERS. DO NOT LET
CABLES HANG OVER CONDUIT.
TIE CABLES UP TO BUS.



LEGEND

- EXISTING UNDERGROUND**
- ◻ E-SW. VAULT
 - ◻ E-SW. MOD.
 - ▲ E-TRANSFORMER
 - E-TYPE "A" MANHOLE
 - E-TYPE "C" MANHOLE
 - E-TYPE "C" DOUBLE OPENING MANHOLE
 - E-TYPE "D" MANHOLE
 - E-TYPE "E" MANHOLE
 - E-CONDUIT
 - E-TYPE "E" DOUBLE OPENING MANHOLE
 - E-TYPE "G" DOUBLE OPENING MANHOLE
- OVERSEAS**
- E-DISTRIBUTION/TRANSMISSION POLE
- INSTALL UNDERGROUND**
- E-3/C-1000MCM 34KV STR. CU. W/JKT.
 - 1-3/C-1000MCM 34KV STR. CU. W/JKT.
 - 1-SPLICE PER MFR. OR SPECS. PER C30-0460

SEE SHEET 10

STA: 3953+00

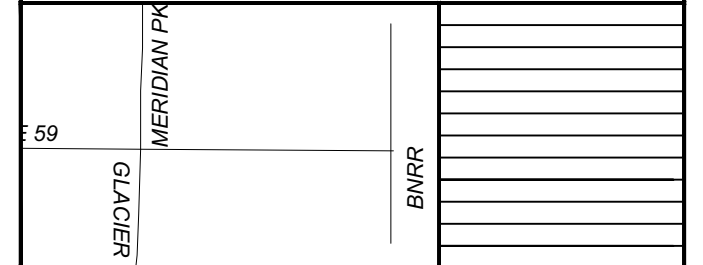
SEE SHEET 10

EXISTING P.U. & D.E. BLANKET EASEMENT PER DOC R97-028000

EXISTING P.U. & D.E. BLANKET EASEMENT PER DOC R97-028000

CALL JULIE 48 HRS. PRIOR TO CONSTRUCTION
1 - 800 - 892 - 0123 OR CALL 811

- NOTES:**
1. THE PROJECT ENGINEER FOR THIS JOB IS BRIAN CHAMBERLAIN AT (630)420-6653.
 2. THE PROJECT COORDINATOR FOR THIS PROJECT IS PAUL MICHALOWSKI AT (630)305-5227.
 3. CONTRACTOR IS RESPONSIBLE FOR MANHOLE PHOTOS TAKEN OF ALL CLEARLY MARKED CABLE AND ALL WALLS OF MANHOLES. PHOTOS WILL BE GIVEN TO THE GIS GROUP WITH THE AS-BUILTS.



PROJECT TITLE ROUTE 59 ROAD IMPROVEMENTS		DESIGN REVISION DATES	
PROJECT DESCRIPTION TO RELOCATE AND INSTALL NEW DUCTBANK AND 34KV FEEDERS			
ENGINEER BCC	DRAFTING DATE 5-11-12	MAP # 4211,4212,4223	SCALE 1 = 40
DESIGN BY DL	REVISIONS DATE PSM	FILE JOB AGREEMENT # N/A	PROJECT # EU-12
CHECKED BY	APPROVED BY	CAD FILE 0060648001C9.DWG	SHEET # 9 OF 63
Naperville Department of Public Utilities Electric Division			WORK REQUEST # 60468