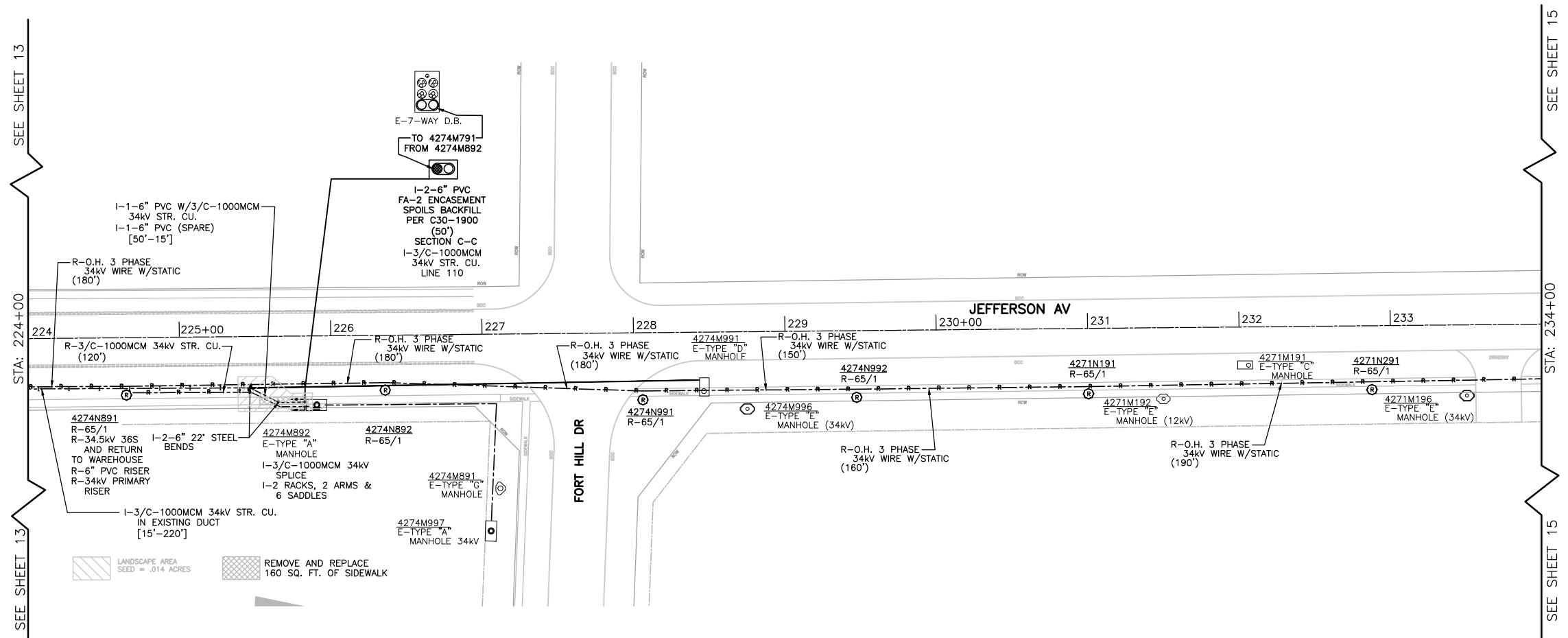


F.A. RTE. 338/IL 59	SECTION -2011-036-	COUNTY DUPAGE	TOTAL SHEETS 0	SHEET NO. 3
STA.		TO STA.		
FED. ROAD DIST. NO.	ILLINOIS	CONTRACT 60P42		

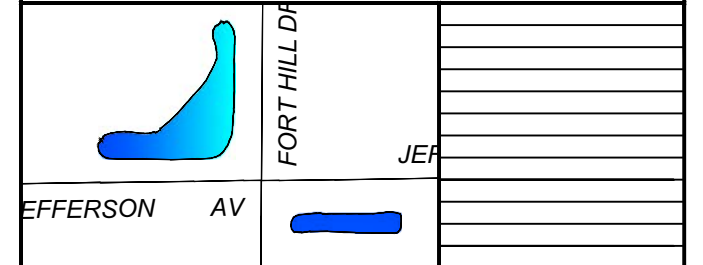


LEGEND

- EXISTING UNDERGROUND**
- MLT E-SW. VAULT
 - E-SW. MOD.
 - ▲ E-TRANSFORMER
 - E-TYPE "A" MANHOLE
 - E-TYPE "C" MANHOLE
 - E-TYPE "C" DOUBLE OPENING MANHOLE
 - E-TYPE "D" MANHOLE
 - E-TYPE "E" MANHOLE
 - E-CONDUIT
 - E-TYPE "E" DOUBLE OPENING MANHOLE
 - E-TYPE "G" DOUBLE OPENING MANHOLE
- OVERHEAD**
- E-DISTRIBUTION/TRANSMISSION POLE
 - E-3/C-1000MCM 34kV STR. CU. W/JKT.
- INSTALL UNDERGROUND**
- 1-3/C-1000MCM 34kV STR. CU. W/JKT.
 - 1-SPLICE PER MFR. OR SPECS. PER C30-0460
- REMOVE OVERHEAD**
- ⊙ R-DISTRIBUTION/TRANSMISSION POLE 65/1 THRU 65/3 POLES
 - R-3/C-1000MCM 34kV STR. CU. W/JKT.
 - R-O.H. 3 PHASE 34kV WIRE W/STATIC

CALL JULIE 48 HRS. PRIOR TO CONSTRUCTION
1 - 800 - 892 - 0123 OR CALL 811

- NOTES:**
1. THE PROJECT ENGINEER FOR THIS JOB IS BRIAN CHAMBERLAIN AT (630)420-6653.
 2. THE PROJECT COORDINATOR FOR THIS PROJECT IS PAUL MICHALOWSKI AT (630)305-5227.
 3. CONTRACTOR IS RESPONSIBLE FOR MANHOLE PHOTOS TAKEN OF ALL CLEARLY MARKED CABLE AND ALL WALLS OF MANHOLES. PHOTOS WILL BE GIVEN TO THE GIS GROUP WITH THE AS-BUILTS.



PROJECT TITLE		ROUTE 59 ROAD IMPROVEMENTS	
PROJECT DESCRIPTION		TO RELOCATE AND INSTALL NEW DUCTBANK AND 34KV FEEDERS	
ENGINEER	DRAFTING DATE	MAP #	SCALE
BCC	5-11-12	4211,4212,4223	1 = 40
DESIGN BY	REVISIONS DATE	PERMIT AGREEMENT #	PROJECT #
DL	PSM	N/A	EU-12
CHECKED BY	APPROVED BY	CAD FILE	SHEET #
		0060648001C14.DWG	14 OF 63
Naperville Department of Public Utilities Electric Division			WORK REQUEST #
			60468