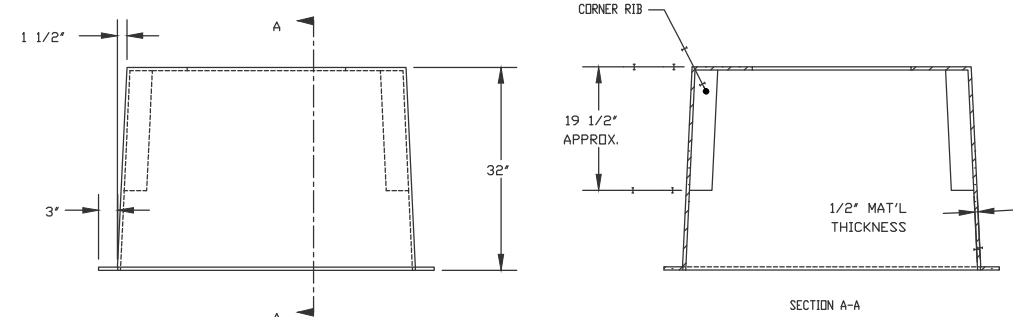
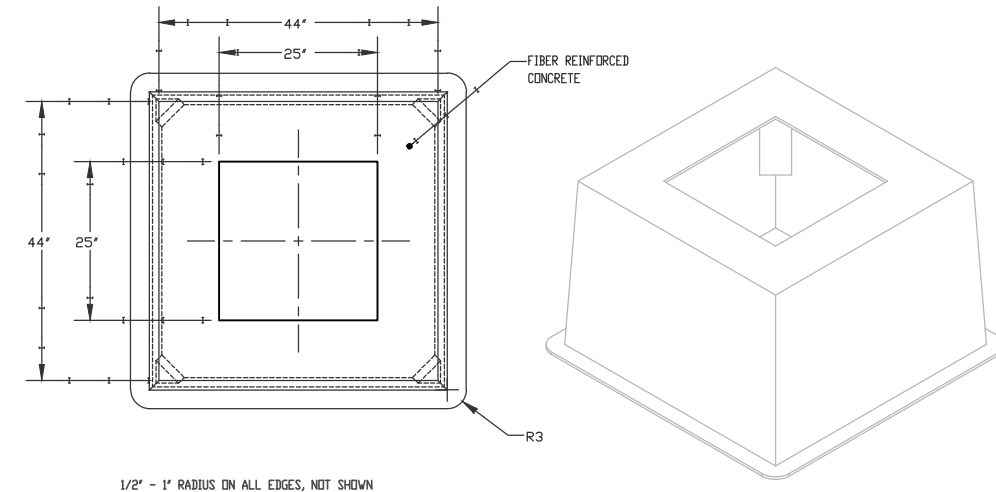


F.A.P. RTE.	SECTION	COUNTY	TOTAL SHEETS	SHEET NO.
338/IL 59	2011-035-1	DUPAGE		
FED. ROAD. DIST. NO.			CONTRACT 60P42	
ILLINOIS			FED. AID PROJECT	

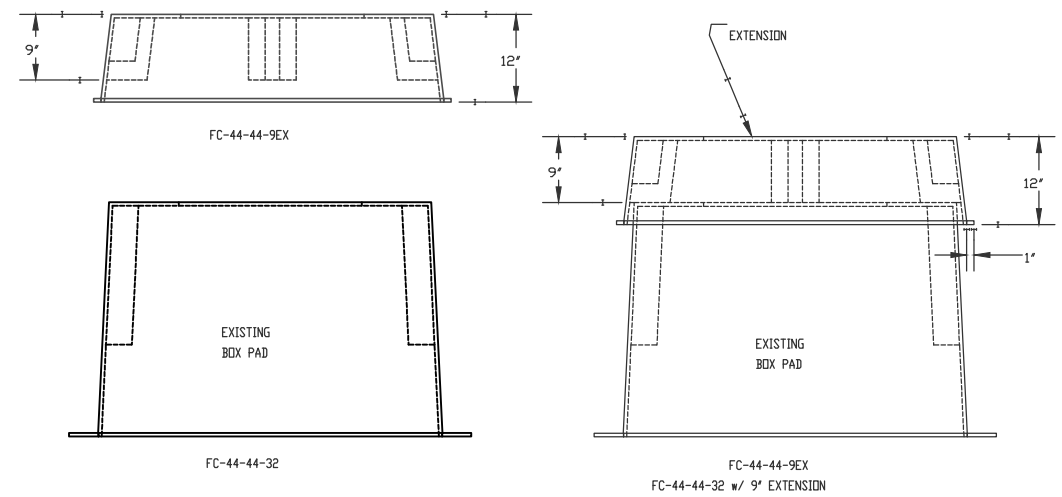
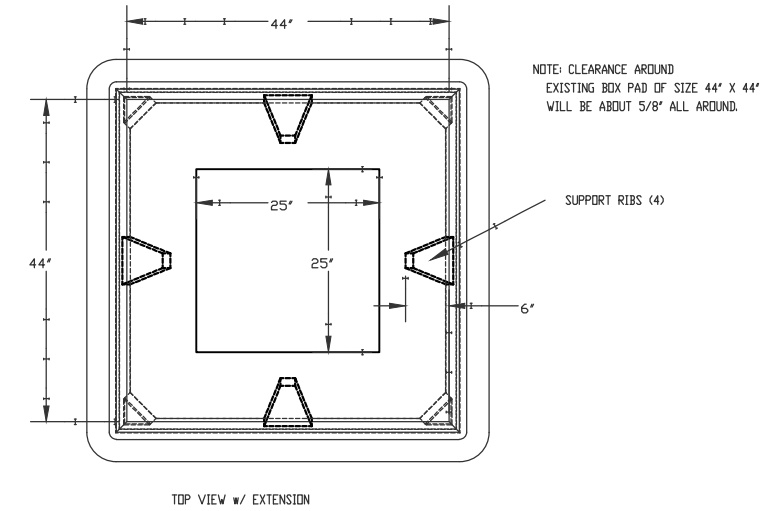
TRANSFORMER PAD



- NOTES:**
- 1) SEE M30-1400 FOR PRODUCT MATERIAL SPECIFICATIONS.
 - 2) BOX PAD EXTENSIONS WILL FIT OVER NEW (44 X 44 X 32) AND EXISTING (38 X 43 X 32) TRANSFORMER BOX PADS (SEE M30-1444).

NAPERVILLE PUBLIC UTILITIES DEPARTMENT ELECTRIC STANDARDS	FIBERCRETE BOX PAD FOR 1Ø TRANSFORMER	DATE: 12-25-04 M30-1440
--	--	----------------------------

1Ø TRANSFORMER PAD EXTENDER



- NOTES:**
- 1) SEE M30-1400 FOR PRODUCT MATERIAL SPECIFICATIONS.
 - 2) BOX PAD EXTENSIONS WILL FIT OVER NEW (44 X 44 X 32) AND EXISTING (43 X 38 X 32) TRANSFORMER BOX PADS (SEE M30-1440).

NAPERVILLE PUBLIC UTILITIES DEPARTMENT ELECTRIC STANDARDS	BOX PAD EXTENSION FOR 1Ø TRANSFORMER	DATE: 11-02-05 M30-1444
--	---	----------------------------

PROJECT TITLE					ROUTE 59 ROAD IMPROVEMENTS				
PROJECT DESCRIPTION					DETAILS AND STANDARDS				
ENGINEER	DRAFTING DATE	MAP #	SCALE						
BCC	5-11-12	4211,4212,4223	N.T.S.						
GIS DESIGN BY	DRAFTED BY	REVISIONS DATE	AT&T JOINT AGREEMENT #	PROJECT #					
DL	PSM		N/A	EU-12					
CHECKED BY	APPROVED BY	CAD FILE	SHEET #						
		0060648001D142.DWG	42 OF 63						
Naperville			Department of Public Utilities Electric Division			WORK REQUEST #		60468	