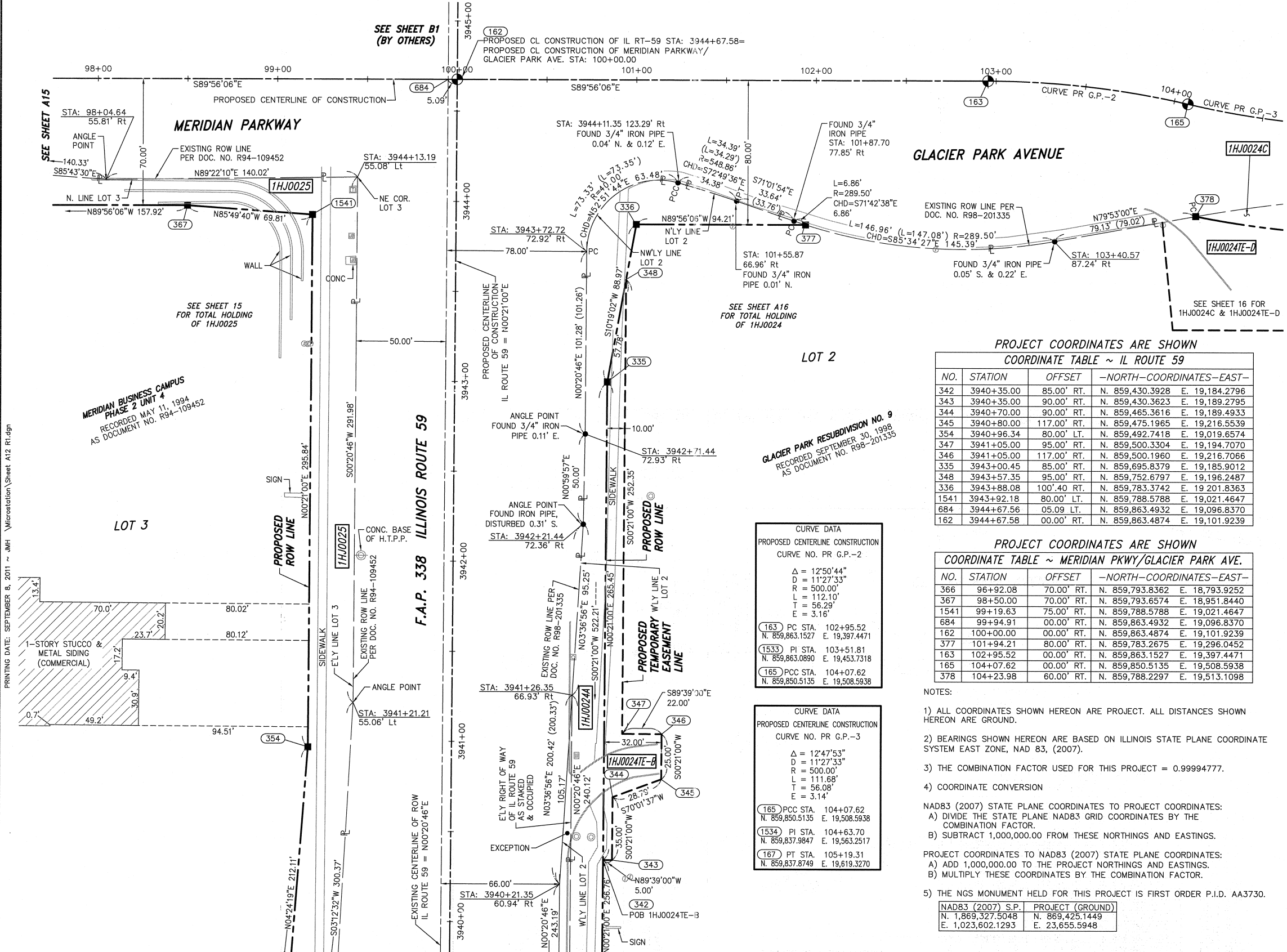


BEARINGS ARE BASED ON ILLINOIS STATE PLANE COORDINATE SYSTEM EAST ZONE, N.A.D. 83 (2007)



PROJECT COORDINATES ARE SHOWN
COORDINATE TABLE ~ IL ROUTE 59

NO.	STATION	OFFSET	-NORTH-	COORDINATES-	EAST-
342	3940+35.00	85.00' RT.	N. 859,430.3928	E. 19,184.2796	
343	3940+35.00	90.00' RT.	N. 859,430.3623	E. 19,189.2795	
344	3940+70.00	90.00' RT.	N. 859,465.3616	E. 19,189.4933	
345	3940+80.00	117.00' RT.	N. 859,475.1965	E. 19,216.5539	
354	3940+96.34	80.00' LT.	N. 859,492.7418	E. 19,019.6574	
347	3941+05.00	95.00' RT.	N. 859,500.3304	E. 19,194.7070	
346	3941+05.00	117.00' RT.	N. 859,500.1960	E. 19,216.7066	
335	3943+00.45	85.00' RT.	N. 859,695.8379	E. 19,185.9012	
348	3943+57.35	95.00' RT.	N. 859,752.6797	E. 19,196.2487	
336	3943+88.08	100.40 RT.	N. 859,783.3742	E. 19,201.8363	
1541	3943+92.18	80.00' LT.	N. 859,788.5788	E. 19,021.4647	
684	3944+67.56	05.09 LT.	N. 859,863.4932	E. 19,096.8370	
162	3944+67.58	00.00' RT.	N. 859,863.4874	E. 19,101.9239	

PROJECT COORDINATES ARE SHOWN
COORDINATE TABLE ~ MERIDIAN PKWY/GLACIER PARK AVE.

NO.	STATION	OFFSET	-NORTH-	COORDINATES-	EAST-
366	96+92.08	70.00' RT.	N. 859,793.8362	E. 18,793.9252	
367	98+50.00	70.00' RT.	N. 859,793.6574	E. 18,951.8440	
1541	99+19.63	75.00' RT.	N. 859,788.5788	E. 19,021.4647	
684	99+94.91	00.00' RT.	N. 859,863.4932	E. 19,096.8370	
162	100+00.00	00.00' RT.	N. 859,863.4874	E. 19,101.9239	
377	101+94.21	80.00' RT.	N. 859,783.2675	E. 19,296.0452	
163	102+95.52	00.00' RT.	N. 859,863.1527	E. 19,397.4471	
165	104+07.62	00.00' RT.	N. 859,850.5135	E. 19,508.5938	
378	104+23.98	60.00' RT.	N. 859,788.2297	E. 19,513.1098	

- NOTES:
- ALL COORDINATES SHOWN HEREON ARE PROJECT. ALL DISTANCES SHOWN HEREON ARE GROUND.
 - BEARINGS SHOWN HEREON ARE BASED ON ILLINOIS STATE PLANE COORDINATE SYSTEM EAST ZONE, NAD 83, (2007).
 - THE COMBINATION FACTOR USED FOR THIS PROJECT = 0.99994777.
 - COORDINATE CONVERSION
NAD83 (2007) STATE PLANE COORDINATES TO PROJECT COORDINATES:
A) DIVIDE THE STATE PLANE NAD83 GRID COORDINATES BY THE COMBINATION FACTOR.
B) SUBTRACT 1,000,000.00 FROM THESE NORTHINGS AND EASTINGS.
 - PROJECT COORDINATES TO NAD83 (2007) STATE PLANE COORDINATES:
A) ADD 1,000,000.00 TO THE PROJECT NORTHINGS AND EASTINGS.
B) MULTIPLY THESE COORDINATES BY THE COMBINATION FACTOR.

NAD83 (2007) S.P.	PROJECT (GROUND)
N. 1,869,327.5048	N. 869,425.1449
E. 1,023,602.1293	E. 23,655.5948

CURVE DATA
PROPOSED CENTERLINE CONSTRUCTION
CURVE NO. PR G.P.-2

Δ = 12°50'44"
D = 11°27'33"
R = 500.00'
L = 112.10'
T = 56.29'
E = 3.16'

163 PC STA. 102+95.52
N. 859,863.1527 E. 19,397.4471

1533 PI STA. 103+51.81
N. 859,863.0890 E. 19,453.7318

165 PCC STA. 104+07.62
N. 859,850.5135 E. 19,508.5938

CURVE DATA
PROPOSED CENTERLINE CONSTRUCTION
CURVE NO. PR G.P.-3

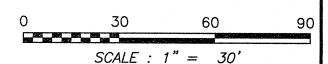
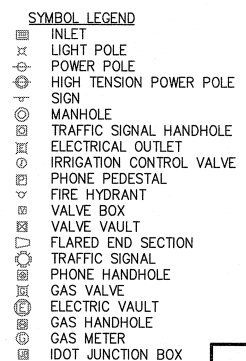
Δ = 12°47'53"
D = 11°27'33"
R = 500.00'
L = 111.68'
T = 56.08'
E = 3.14'

165 PCC STA. 104+07.62
N. 859,850.5135 E. 19,508.5938

1534 PI STA. 104+63.70
N. 859,837.9847 E. 19,563.2517

167 PT STA. 105+19.31
N. 859,837.8749 E. 19,619.3270

PARCEL NUMBER	OWNER	TOTAL HOLDING ACRES	PART TAKEN ACRES	REMAINDER ACRES	PREV. DED. ACRES	EASEMENT ACRES	EASEMENT PURPOSE	PERMANENT TAX INDEX NUMBER	PROPERTY ACQUIRED BY
1HJ0024A	TARGET CORPORATION	15.771	0.288	15.221		0.078	CONSTRUCTION	07-16-402-001	
1HJ0024B			0.125						
1HJ0024C			0.137						
1HJ0025	GATEWAY VIRGINIA PROPERTIES, INC., A CALIFORNIA CORPORATION	20.091	0.613	19.478				07-16-402-003	



RECEIVED
SEP 13 2011
PLATS & LEGALS

Classen, White & Associates, P.C.
121 AIRPORT DRIVE, UNIT 1
JOLIET, ILLINOIS 60431
(815) 744-3720

SHEET 1 IS A COVER SHEET AND NOT RECORDED.

**PLAT OF HIGHWAYS
STATE OF ILLINOIS
DEPARTMENT OF TRANSPORTATION
F.A.P. 338 ILLINOIS ROUTE 59**

SECTION FERRY RD. TO AURORA AVE. DUPAGE COUNTY
PROJECT JOB NO. R-91-035-09
STATION 3940+00 TO STATION 3945+00
SCALE: 1" = 30' SHEET 12 OF ???

**BUREAU OF LAND ACQUISITION
201 WEST CENTER COURT
SCHAUMBURG, ILLINOIS 60196-1096**