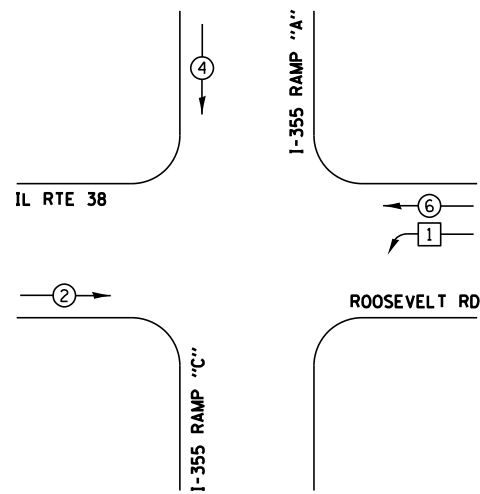


**TEMPORARY CONTROLLER SEQUENCE**

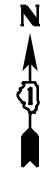
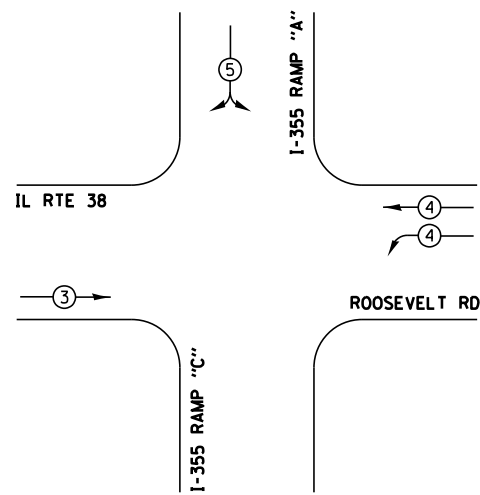


**LEGEND**

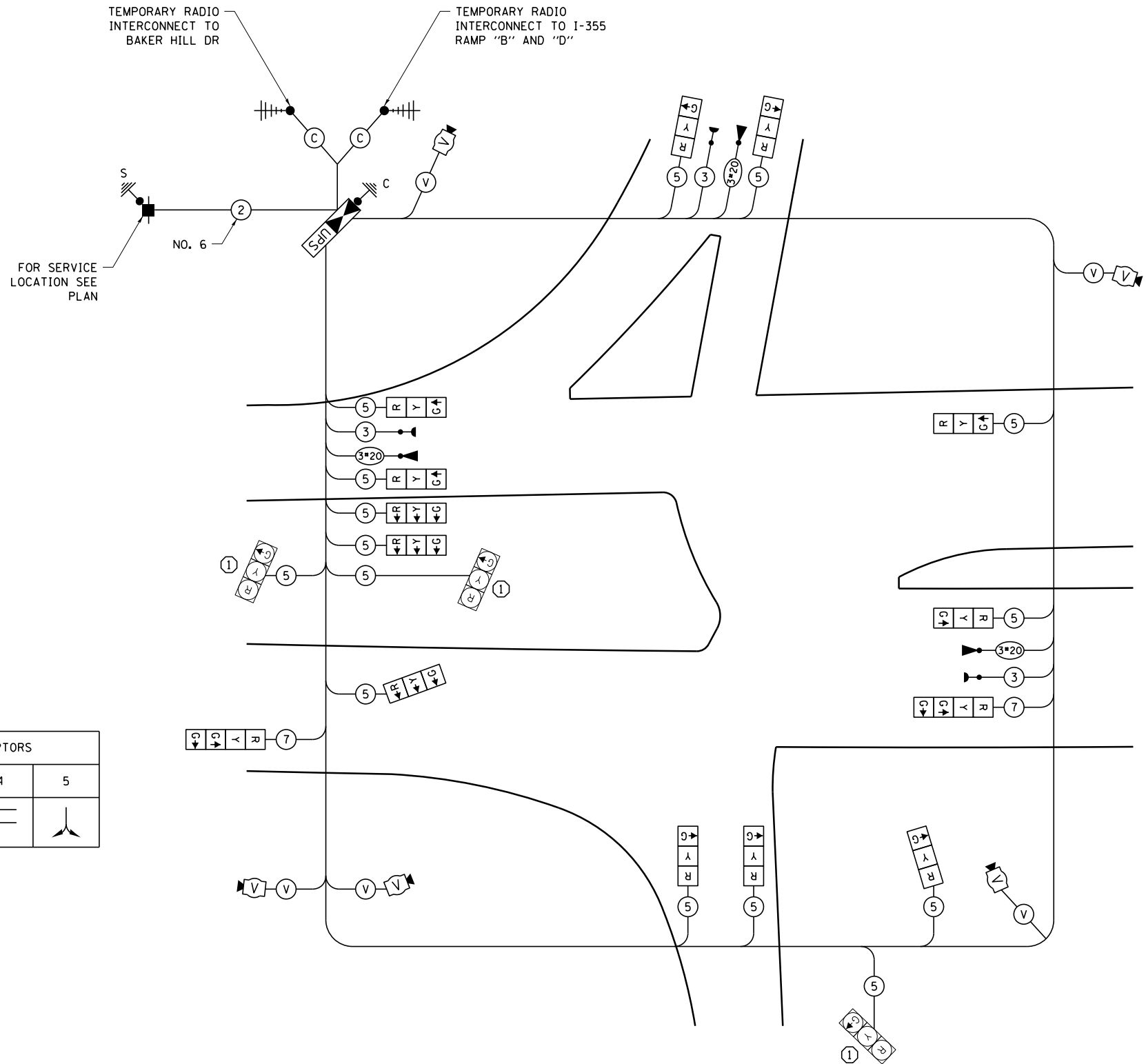
- DUAL ENTRY PHASE
- SINGLE ENTRY PHASE
- OVERLAP
- PEDESTRIAN PHASE
- \* NUMBER REFERS TO ASSOCIATED PHASE

**TEMPORARY PHASE DESIGNATION DIAGRAM**

**TEMPORARY EMERGENCY VEHICLE PREEMPTION SEQUENCE**



EMERGENCY VEHICLE PREEMPTORS			
EMERGENCY VEHICLE PREEMPTOR	3	4	5
MOVEMENT			



**TEMPORARY CABLE PLAN**

**CONSTRUCTION NOTES**

- ① MAINTAIN DURING TEMPORARY TRAFFIC SIGNAL OPERATIONS. REMOVE / ABANDON AS INDICATED IN THE PLANS AFTER PROPOSED TRAFFIC SIGNAL INSTALLATION IS COMPLETE AND FULLY OPERATIONAL.

NOTE:  
THE TRAFFIC SIGNAL CONTROLLER EQUIPMENT FOR THIS PROJECT SHALL BE "ECONOLITE" TO MATCH THE EXISTING ADJACENT SYSTEM.

I.D.O.T. TRAFFIC SIGNAL INSTALLATION ELECTRICAL SERVICE REQUIREMENTS				TOTAL WATTAGE
TYPE	NO. OF LAMPS	WATTAGE INCAND. LED	% OPERATION	
SIGNAL (RED)	17	17	0.50	144.50
(YELLOW)	17	25	0.25	106.25
(GREEN)	19	15	0.25	71.25
ARROW	-	12	0.10	-
PED. SIGNAL	-	25	1.00	-
CONTROLLER	1	100	1.00	100.00
ILLUM. SIGN	-	25	0.05	-
VIDEO SYSTEM	1	150	1.00	150.00
FLASHER			0.50	
ENERGY COSTS TO:			TOTAL =	572.00

**ILLINOIS DEPARTMENT OF TRANSPORTATION**  
DIVISION OF HIGHWAY/DISTRICT 1  
201 WEST CENTER COURT/SCHAUMBURG, ILLINOIS 60196-1096  
ENERGY SUPPLY: CONTACT: JOE STACHO  
PHONE: (630) 424-5704  
COMPANY: COMED

FILE NAME =	USER NAME = pociechal	DESIGNED - LP / PB	REVISED -
es:\pwork\work\pociechal\0306285\DI4112-sht-TS.dgn		DRAWN - LP / PB	REVISED -
Default	PLOT SCALE = 40.0000' / in.	CHECKED - SM	REVISED -
	PLOT DATE = 8/13/2012	DATE - 07/26/12	REVISED -

**STATE OF ILLINOIS  
DEPARTMENT OF TRANSPORTATION**

<b>TEMPORARY CABLE PLAN, PHASE DESIGNATION DIAGRAM AND EMERGENCY VEHICLE PREEMPTION SEQUENCE</b>			
IL RTE 38 (ROOSEVELT RD) AT I-355 SB RAMPS "A" AND "C"			
SCALE: NTS	SHEET OF SHEETS	STA. TO STA.	

F.A.P. RTE.	SECTION	COUNTY	TOTAL SHEETS	SHEET NO.
347	CY-TS-1 (12)	DUPAGE	32	16
CONTRACT NO. 60779				
ILLINOIS FED. AID PROJECT				