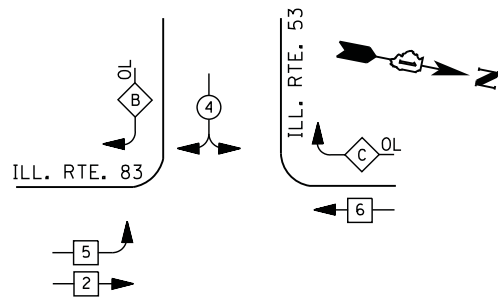


CONTROLLER SEQUENCE



LEGEND

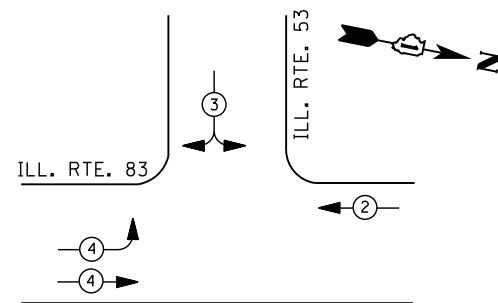
- ⊕ (with circle) DUAL ENTRY PHASE
- ⊕ (with square) PEDESTRIAN PHASE
- ⊕ (with triangle) SINGLE ENTRY PHASE
- ⊕ (with diamond) OVERLAP
- * NUMBER REFERS TO ASSOCIATED PHASE

EXISTING AND PROPOSED PHASE DESIGNATION DIAGRAM

RIGHT TURN OVERLAP PHASE DESIGNATION

OVERLAP LETTER	PERMISSIVE PHASE	PROTECTED PHASE
B	= 4	+ 5
C	= 6	+ 4

EXISTING FIBER OPTIC SPLICE BOX, POWER SUPPLIES, PTZ SURGE PROTECTORS, ALL NECESSARY WIRING/CABLES AND ANY ADDITIONAL LAKE COUNTY EQUIPMENT SHALL BE RELOCATED TO NEW CONTROLLER CABINET AS NECESSARY, OR AS DIRECTED BY THE ENGINEER IN ORDER TO MAINTAIN THE EXISTING INTERCONNECT SYSTEM. CARE SHOULD BE TAKEN TO NOT DAMAGE EXISTING FIBER OPTIC CABLE, SPLICES OR TERMINATIONS. REPAIR OF ANY DAMAGED EQUIPMENT WILL BE THE RESPONSIBILITY OF THE CONTRACTOR. THE COST OF THIS WORK SHALL BE INCLUDED IN THE FULL-ACTUATED CONTROLLER AND TYPE IV CABINET, SPECIAL PAY ITEM.



EMERGENCY VEHICLE PREEMPTION SEQUENCE

EMERGENCY VEHICLE PREEMPTORS			
EMERGENCY VEHICLE PREEMPTOR	2	3	4
MOVEMENT	←	↙ ↘	↗ ↘

I. D. O. T. TRAFFIC SIGNAL INSTALLATION ELECTRICAL SERVICE REQUIREMENTS

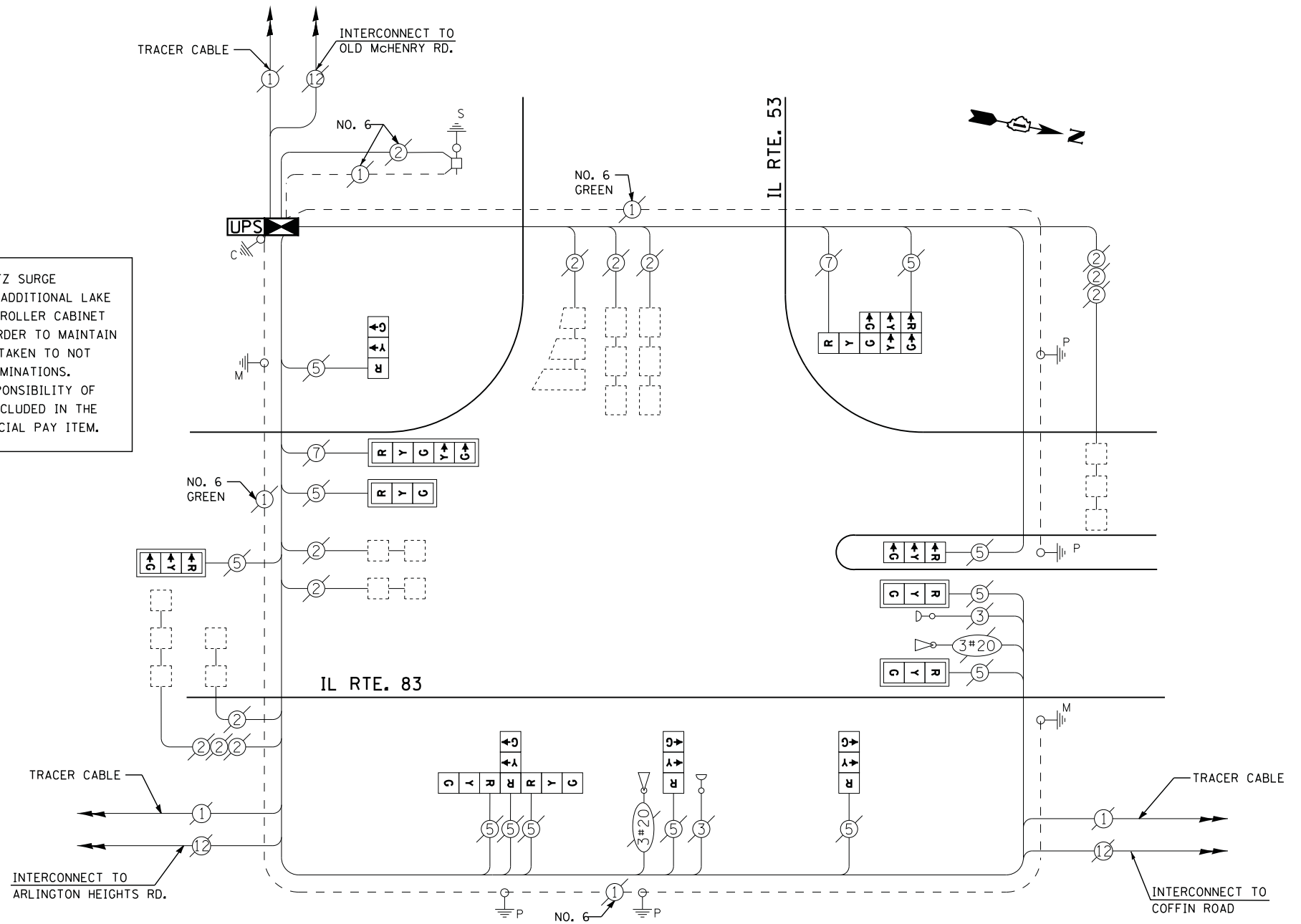
TYPE	NO. LAMPS	WATTAGE		% OPERATIONS	TOTAL WATTAGE
		INCAND.	LED		
SIGNAL (RED)	14	135	17	0.50	119
(YELLOW)	14	135	25	0.25	88
(GREEN)	14	135	15	0.25	53
ARROW	4	135	12	0.10	5
PED. SIGNAL	--	90	25	1.00	--
CONTROLLER	1	100	100	1.00	100
ILLUM. SIGN		252	25	0.05	--
VIDEO SYSTEM		150	-	1.00	--
FLASHER LED					
TOTAL =					365

ENERGY COSTS- BILLED TO: IDOT DISTRICT 1
 201 WEST CENTER COURT
 SCHAUMBURG, IL 60196-1096
 CONTACT TERRI BLECK
 PHONE 847-816-5239
 COMMONWEALTH EDISON

SCHEDULE OF QUANTITIES

QUANTITY	UNIT	ITEM
1	EACH	MAINTENANCE OF EXISTING TRAFFIC SIGNAL INSTALLATION
1	EACH	TRANSCEIVER - FIBER OPTIC
5	EACH	TRAFFIC SIGNAL BACKPLATE, LOUVERED, ALUMINUM
12	EACH	INDUCTIVE LOOP DETECTOR
* 1	EACH	RELOCATE EXISTING EMERGENCY VEHICLE PRIORITY SYSTEM, PHASING UNIT
1	EACH	REMOVE EXISTING TRAFFIC SIGNAL EQUIPMENT
1	EACH	FULL-ACTUATED CONTROLLER AND TYPE IV CABINET, SPECIAL
1	EACH	UNINTERRUPTIBLE POWER SUPPLY, SPECIAL
1	EACH	SIGNAL HEAD, LED, 2-FACE, 1-3 SECTION, 1-5 SECTION, BRACKET MOUNTED, RETROFIT
4	EACH	SIGNAL HEAD, LED, 1-FACE, 3-SECTION, BRACKET MOUNTED, RETROFIT
4	EACH	SIGNAL HEAD, LED, 1-FACE, 3-SECTION, MAST ARM MOUNTED, RETROFIT
1	EACH	SIGNAL HEAD, LED, 1-FACE, 5-SECTION, MAST ARM MOUNTED, RETROFIT
1	EACH	SIGNAL HEAD, LED, 3-FACE, 3-SECTION, BRACKET MOUNTED RETROFIT

* 100% COST TO LONG GROVE



CABLE PLAN

THE TRAFFIC SIGNAL CONTROL EQUIPMENT FOR THIS PROJECT SHALL BE "ECONOLITE" TO MATCH THE EXISTING ADJACENT SYSTEM

RETROFIT ALL EXISTING SIGNAL HEADS TO L.E.D

REMOVAL OF EXISTING TRAFFIC SIGNAL EQUIPMENT

THE FOLLOWING ITEMS SHALL BE REMOVED BY THE CONTRACTOR AND SHALL BE DISPOSED OF BY THEM OUTSIDE THE RIGHT-OF-WAY AT THEIR EXPENSE. THE SALVAGE VALUE OF THE REMOVED EQUIPMENT SHALL BE REFLECTED IN THE CONTRACT BID PRICE.

- 5 EACH TRAFFIC SIGNAL BACKPLATE
- 1 EACH CONTROLLER AND CABINET (COMPLETE)

TS# 6835
 LONG GROVE